

Estimating historical disease burden and the impact of vaccination for influenza types and subtypes in the United States, 2016–2020

Supplementary Information

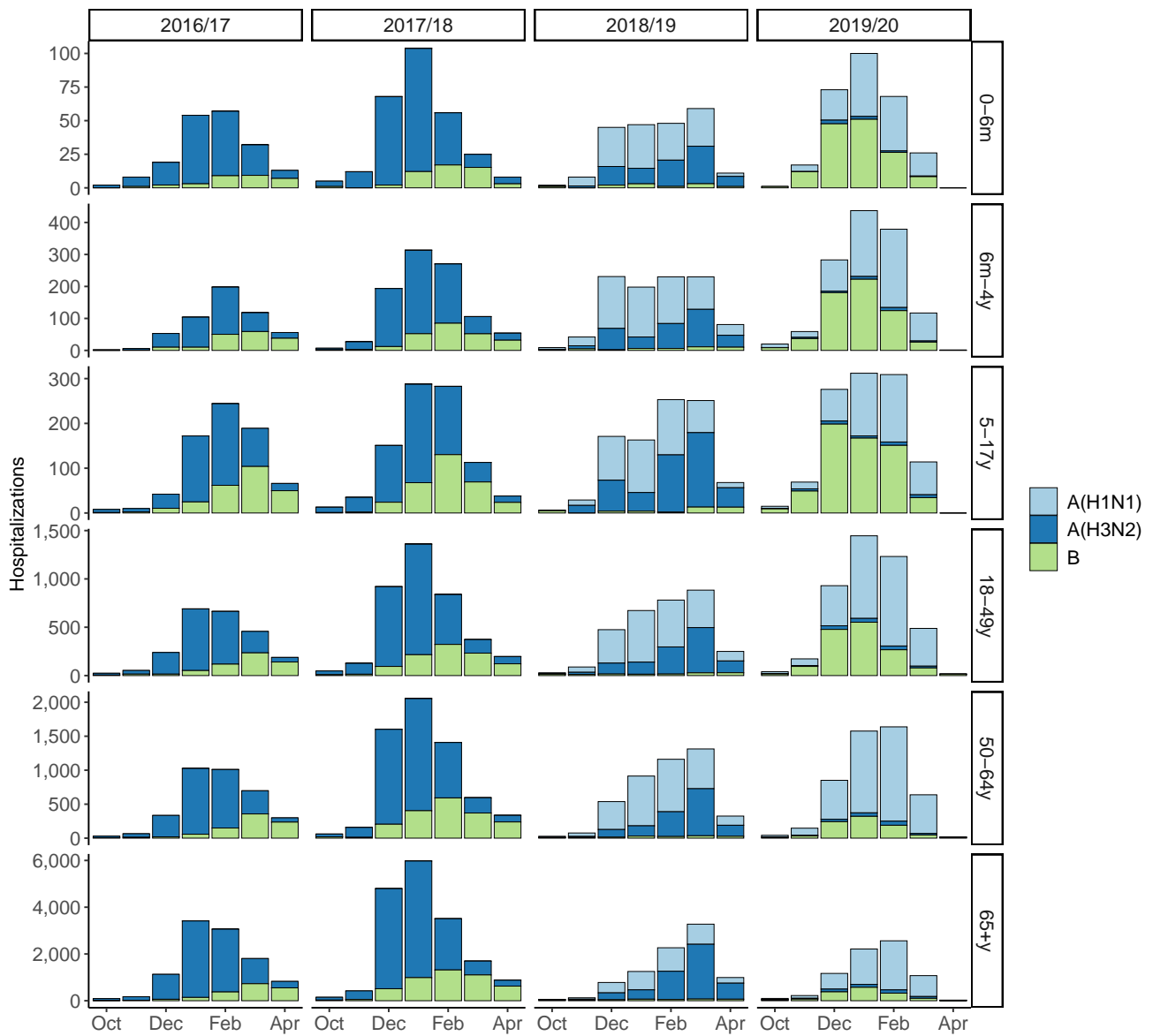


Figure S1 – Monthly reported FluSurv-NET hospitalizations by age and virus type or subtype.

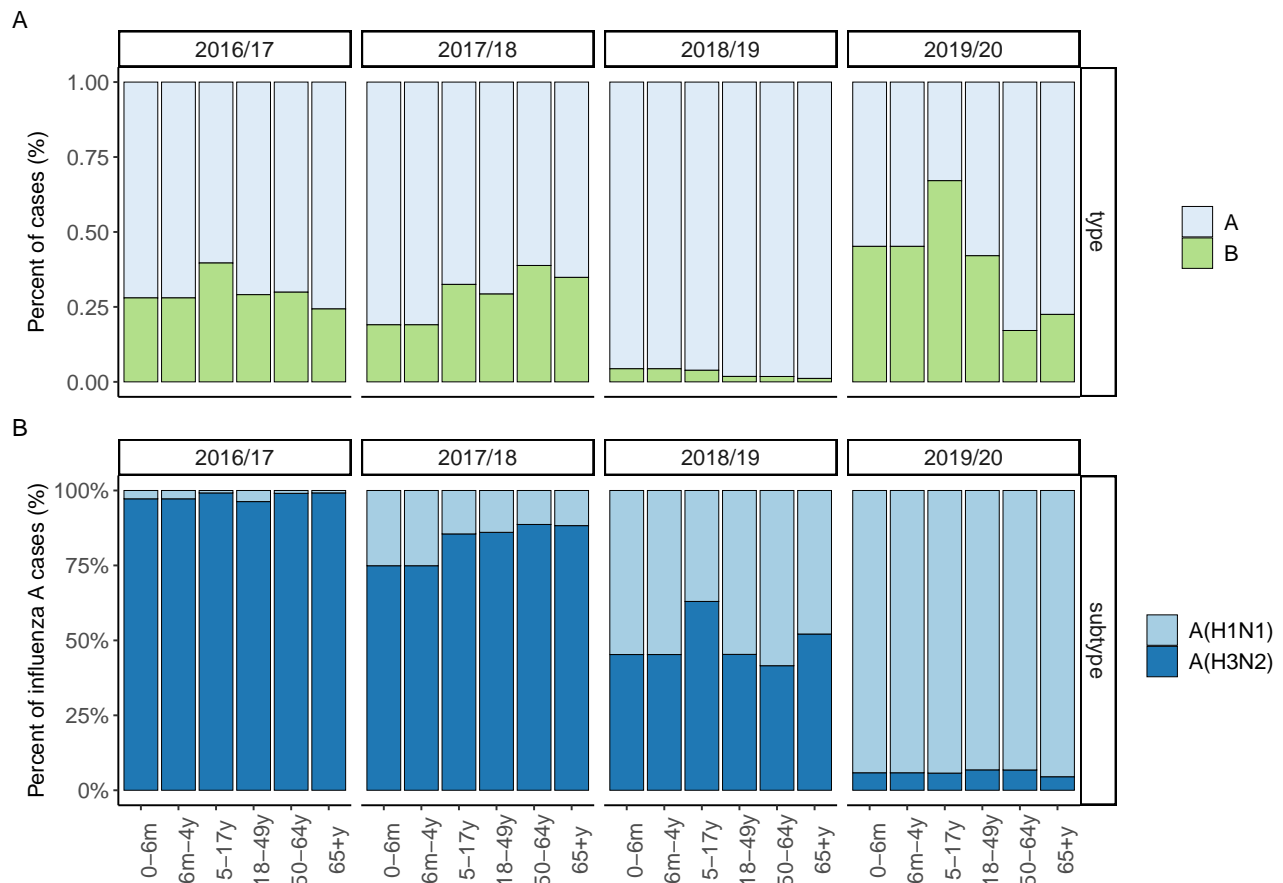


Figure S2 – Distribution of virus type and subtypes among Flu VE Network cases. (A) Distribution of influenza types A and B. (B) Distribution of influenza A subtypes, A(H1N1) and A(H3N2).

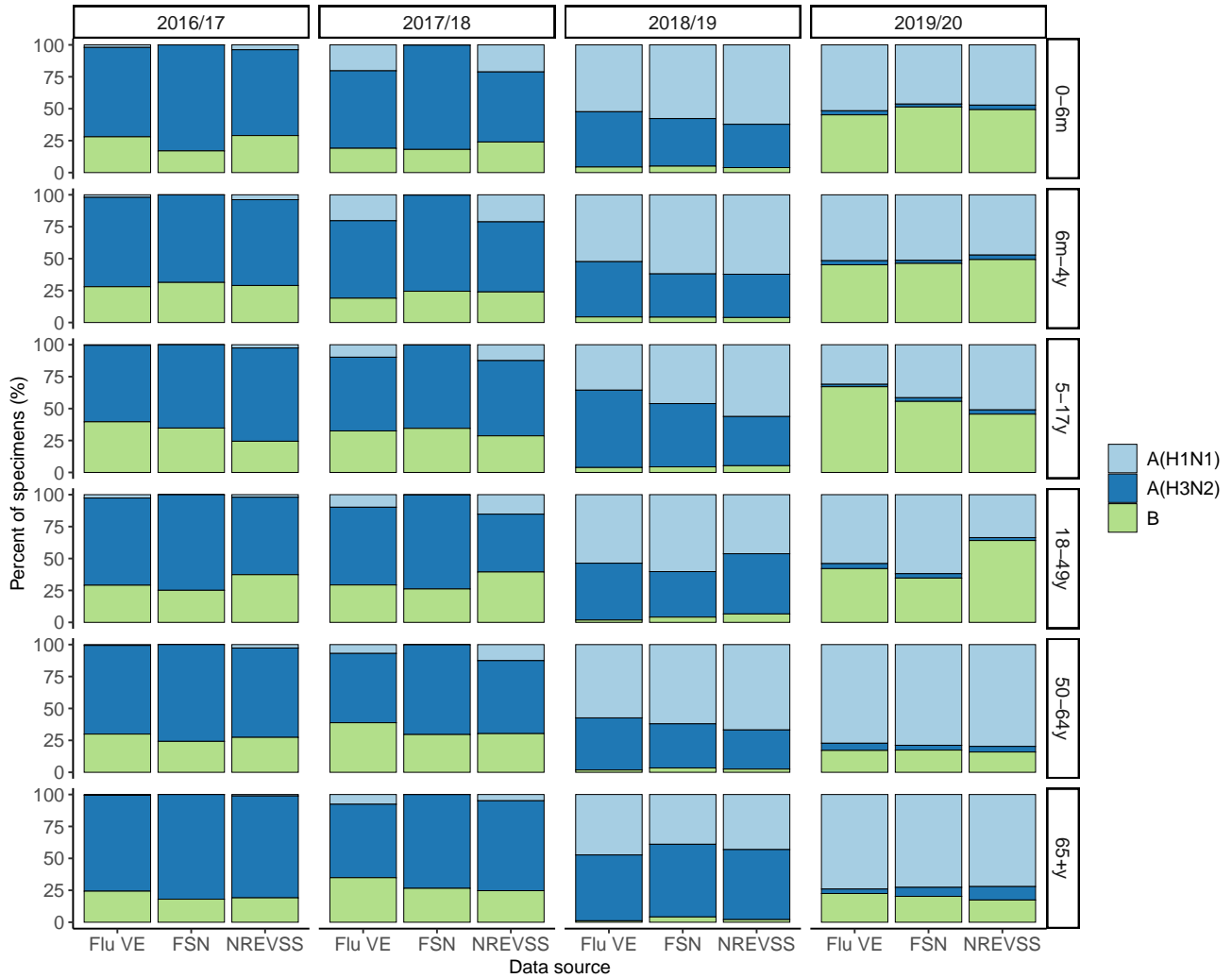


Figure S3 – Comparison of the distribution of virus type and subtypes among independent data sources. Flu VE refers to the Flu VE Network; FSN refers to FluSurv-NET; and NREVSS refers to the World Health Organization (WHO) and National Respiratory and Enteric Virus Surveillance System (NREVSS) Collaborating Labs. The NREVSS data were available for five age groups: 0–4 years, 5–17 years, 18–49 years, 50–64 years, and ≥ 65 years. NREVSS distributions among children 0–4 years were compared to FSN and Flu VE distributions among children 0–6 months and among 6 months–4 years.

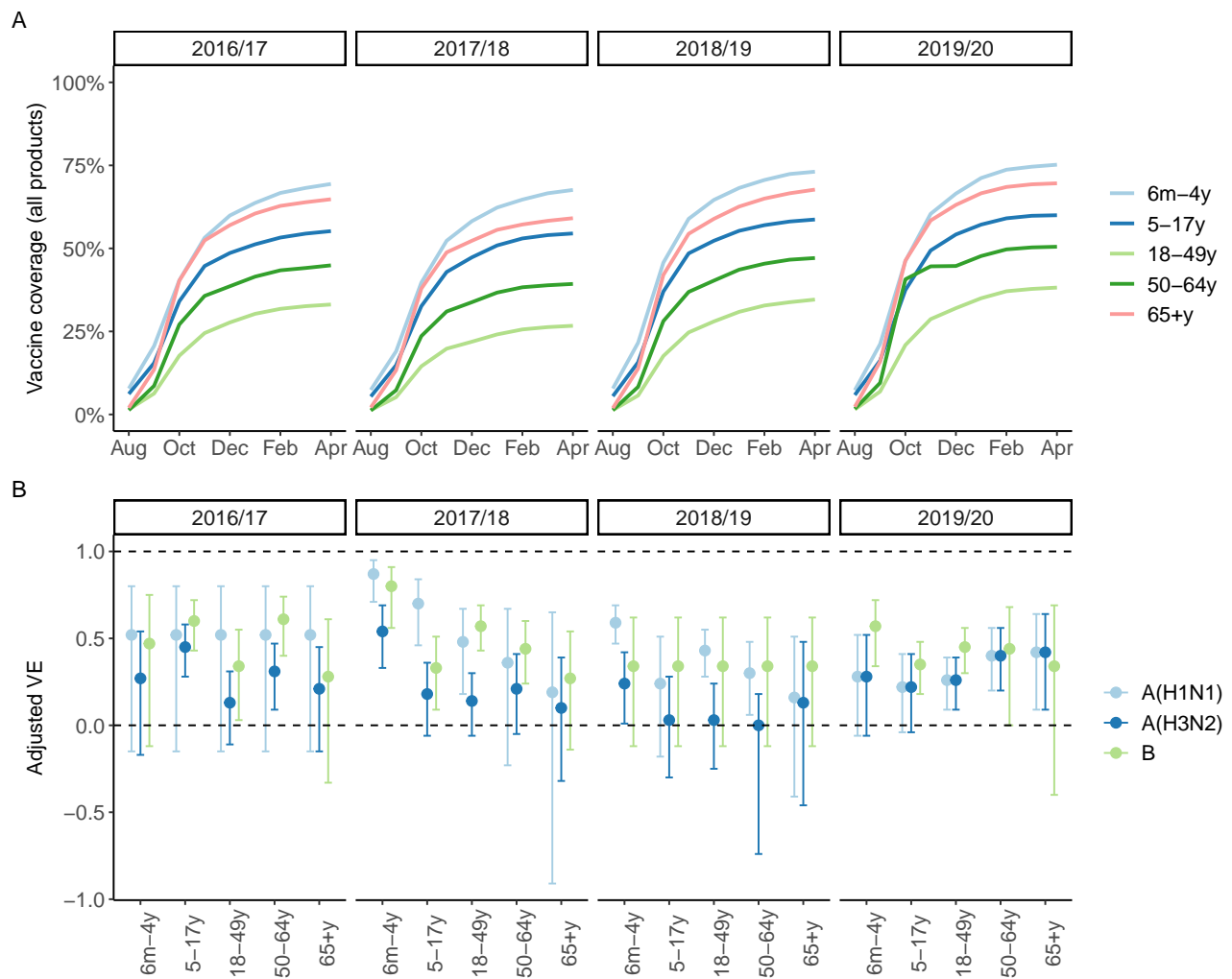


Figure S4 – Vaccine coverage and vaccine effectiveness (VE). (A) Monthly vaccine coverage estimates from FluVaxView. (B) VE estimates from the Flu VE Network.

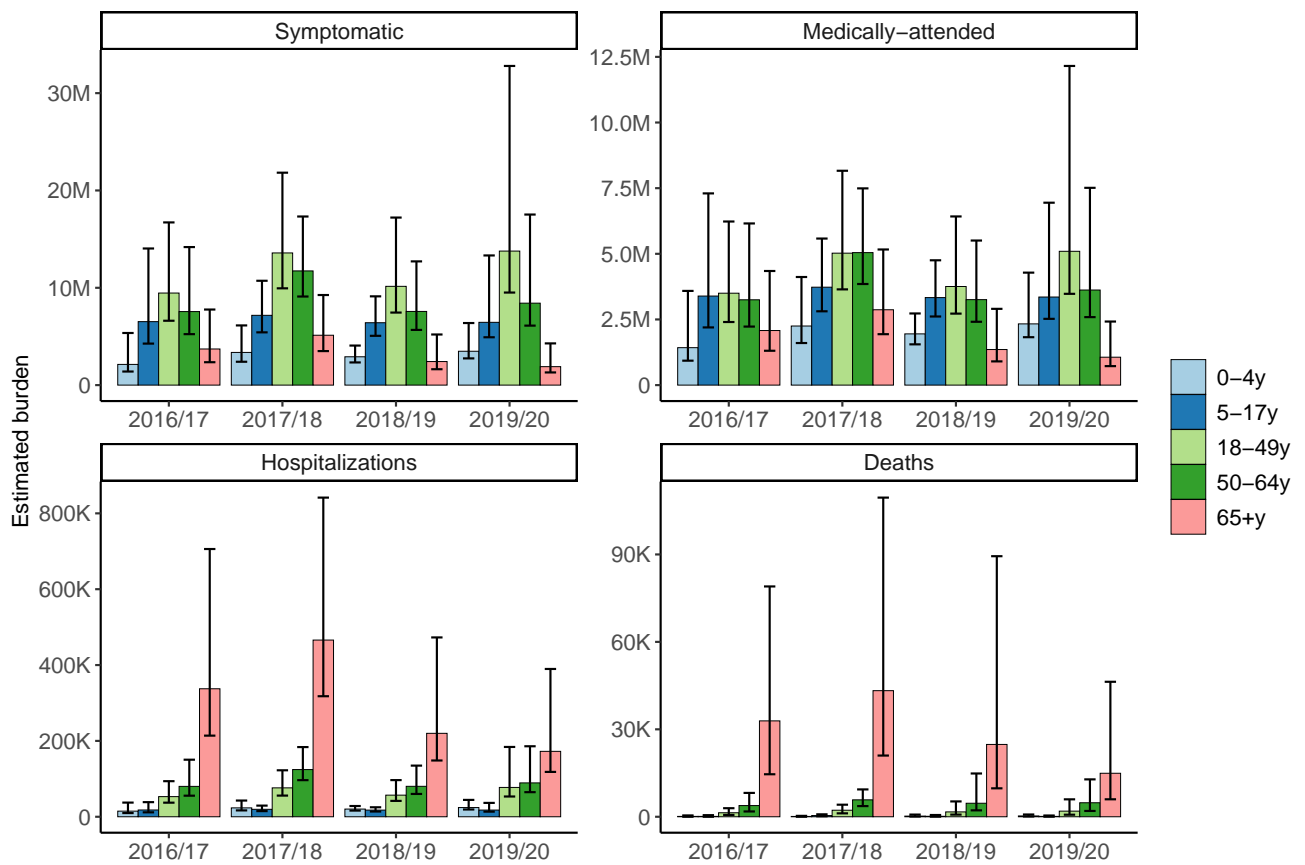


Figure S5 – Estimated disease burden by season and age group for all influenza viruses. Bars represent point estimates and error bars are the 95th percentile uncertainty intervals.

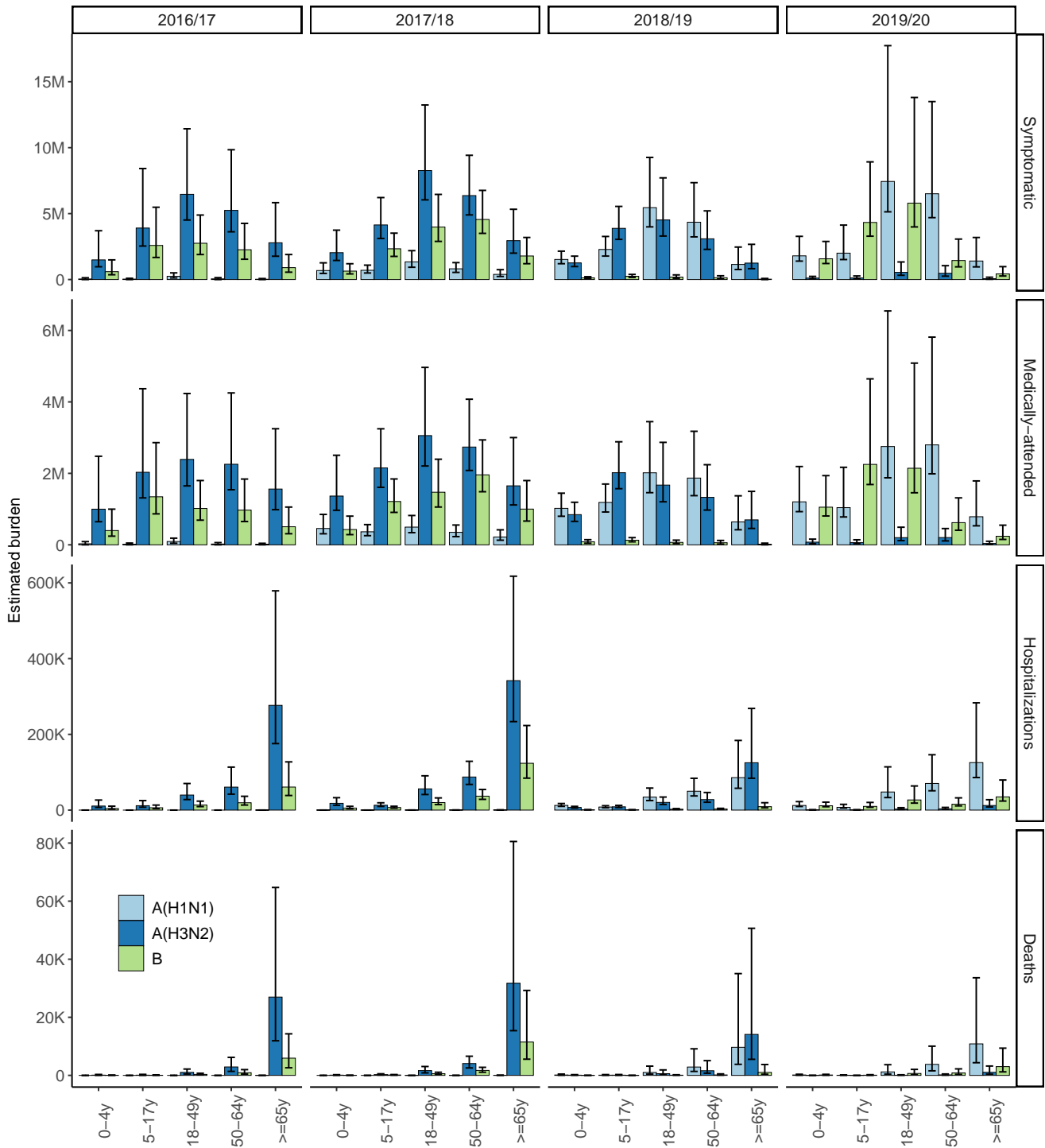


Figure S6 – Estimated disease burden by season, age group, and virus type or subtype. Bars represent point estimates and error bars are the 95th percentile uncertainty intervals.

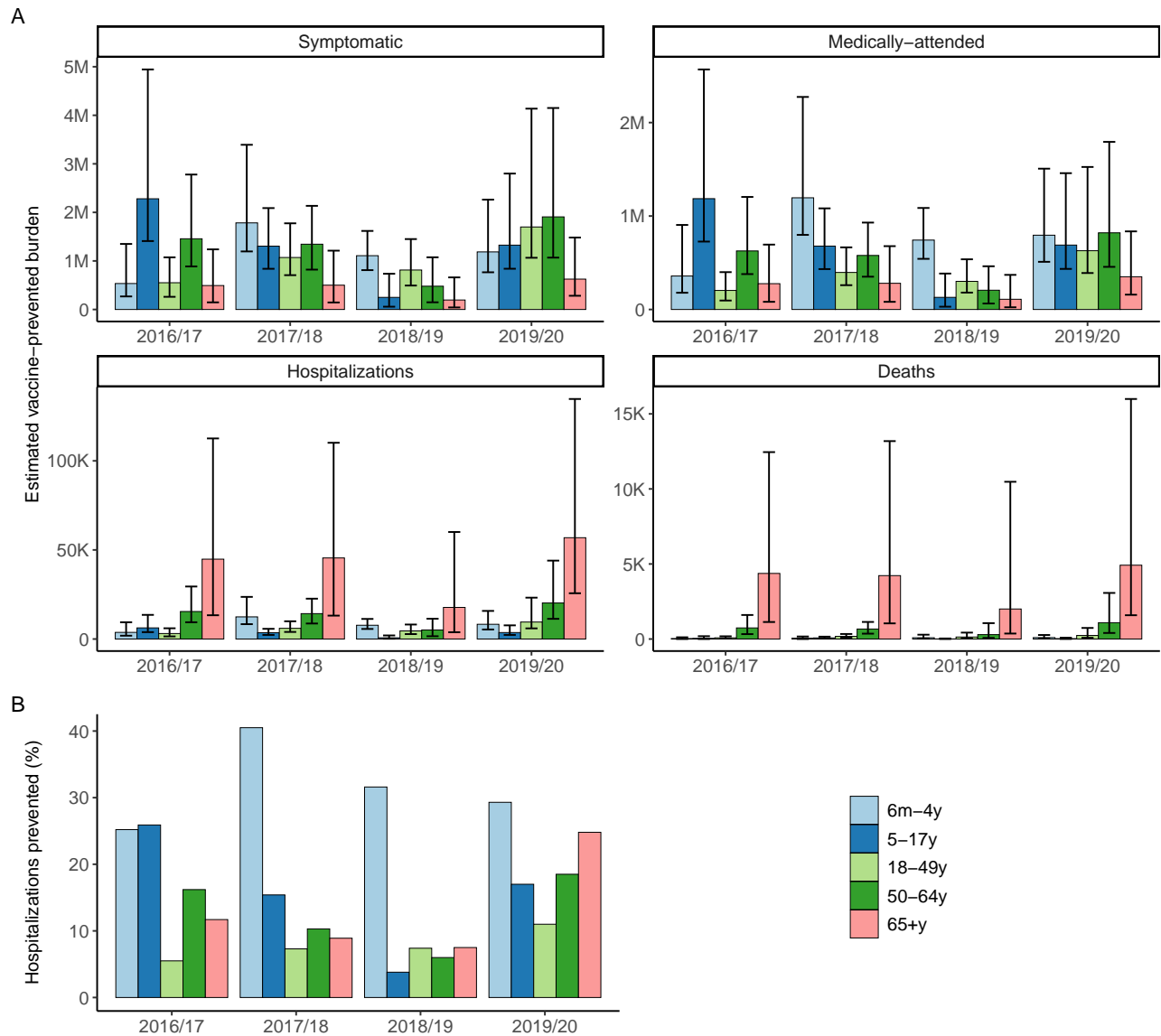


Figure S7 – Estimated vaccine-prevented burden by season and age group for all influenza viruses. (A) Absolute disease burden prevented by vaccination. Bars represent point estimates and error bars are the 95th percentile uncertainty intervals. (B) Hospitalizations prevented as a percentage of the total number of hospitalizations estimated to occur in the absence of vaccination.

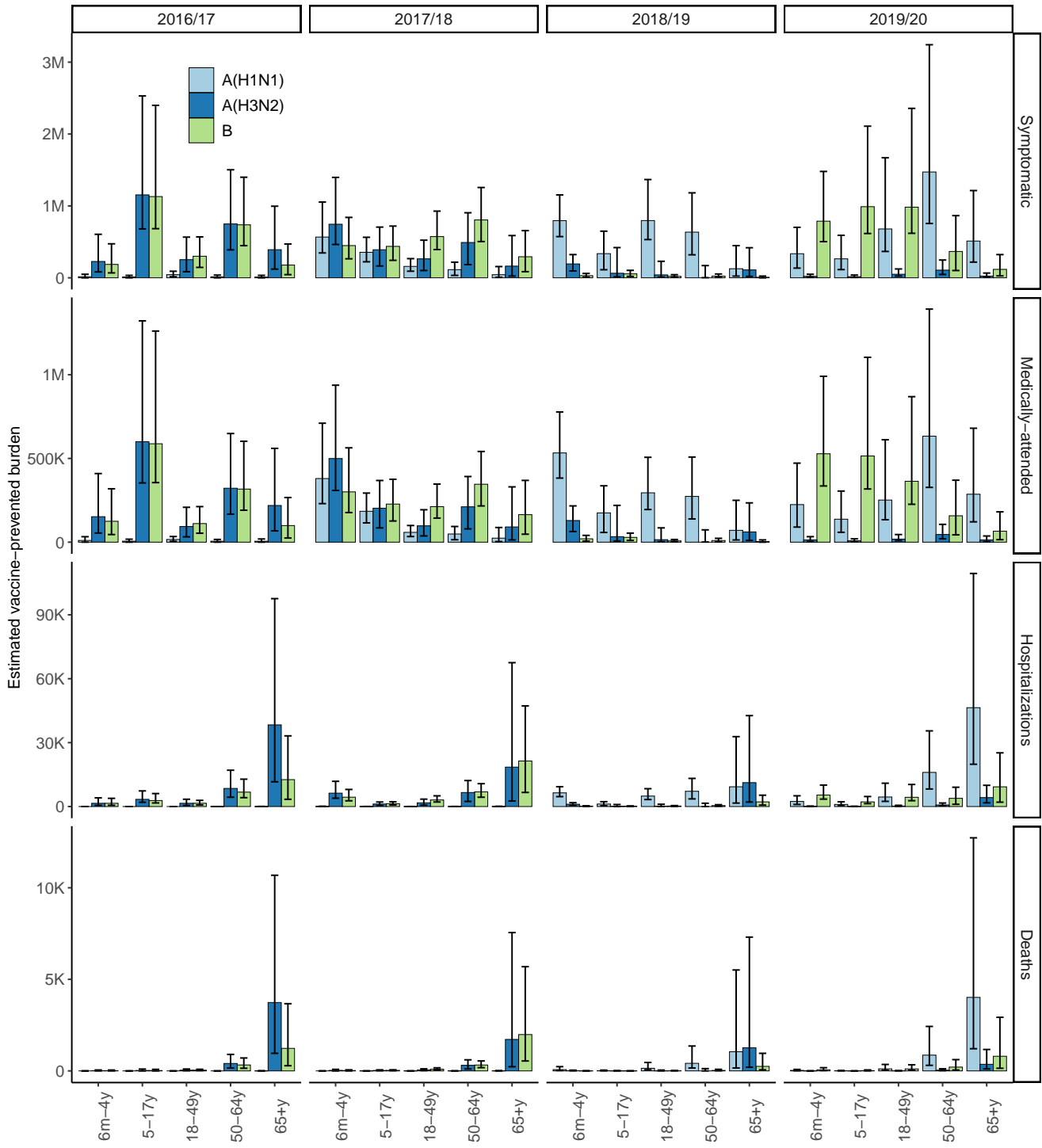


Figure S8 – Estimated vaccine-prevented burden by season, age group, and virus type or subtype. Bars represent point estimates and error bars are the 95th percentile uncertainty intervals.

Table S1 – Summary values from select data sources. Values represent ranges for all influenza viruses from 2016/17–2019/20. Sources are cited in the text. Abbreviations: FSN = FluSurvNET.

Age (years)	FSN total reported hospitalizations	Final vaccine coverage (%)	Vaccine effectiveness
0-6m	185 - 285		
6m-4y	537 - 1296	67.6 - 75.2	0.4 - 0.68
5-17y	731 - 1095	54.5 - 60	0.07 - 0.51
18-49y	2316 - 4326	26.7 - 38.2	0.19 - 0.34
50-64y	3463 - 6222	39.3 - 50.5	0.14 - 0.4
65+y	7366 - 17433	59.1 - 69.6	0.12 - 0.39

Table S2 – Seasonal distribution of virus types and subtypes among all outpatient cases (from the Flu VE Network) and all hospitalizations (from FluSurv-NET).

Season	Source	A(H1N1) (%)	A(H3N2) (%)	B (%)
2016/17	Hospitalizations	0.01 - 0.05	65.23 - 82.98	16.97 - 34.76
2016/17	Outpatient cases	0.49 - 2.63	59.87 - 75.08	24.32 - 39.64
2017/18	Hospitalizations	0.07 - 0.3	65.3 - 81.6	18.13 - 34.5
2017/18	Outpatient cases	6.93 - 20.32	54.25 - 60.84	19.03 - 38.82
2018/19	Hospitalizations	38.98 - 62.06	33.9 - 56.88	3.42 - 5.04
2018/19	Outpatient cases	35.58 - 57.4	40.81 - 60.56	1.15 - 4.36
2019/20	Hospitalizations	41.49 - 78.84	2.29 - 7.04	17.38 - 55.62
2019/20	Outpatient cases	31.01 - 77.25	1.89 - 5.62	17.13 - 67.1

Table S3 – Input parameters that remain constant by month and by virus type and subtype. For parameters that vary by season, the range of inputs for 2016/17–2019/20 is shown. Sources for these values are cited in the text. Abbreviations: CHR = case-hospitalization ratio; DHR = death-hospitalization ratio; MA = medically-attended fraction.

Age (years)	Under-detection multiplier	DHR	CHR	MA
0–4	1.357–1.804	0.005–0.012	143.4	0.670
5–17	1.418–2.121	0.007–0.021	364.7	0.520
18–49	1.680–2.104	0.025–0.029	178.2	0.370
50–64	1.586–1.988	0.047–0.058	94.3	0.430
≥65	1.852–2.470	0.087–0.113	11.0	0.560

Table S4 – Monte Carlo simulation settings. Parameter notation is as follows: λ reflects the mean of a Poisson distribution; N and p reflect the number of trials and probability of success of a Binomial distribution; μ and σ reflect the mean and standard deviation of a Normal distribution; and m , m_l and m_u reflect the mode, minimum and maximum of a Beta-PERT distribution. Normal distributions were truncated at 0. Abbreviations: VE = vaccine effectiveness.

Input	Stratifications	Distribution	Parameter(s)
Number of FluSurv-NET hospitalizations* A(H1N1) A(H3N2) B	Season, month, age	Poisson Poisson Poisson	λ = observed number λ = observed number λ = observed number
Number of Flu VE Network outpatient visits* A(H1N1) A(H3N2) B	Season, month, age	Binomial Binomial Binomial	N = observed number of influenza A visits p = observed proportion of A visits that were A(H1N1) N = observed number of influenza A visits p = observed proportion of A visits that were A(H3N2) N = observed total number of influenza visits p = observed proportion of total visits that were B
Multipliers Under-detection of hospitalizations Medically-attended fraction Death-hospitalization ratio	Season, age Season, age Season, age	Beta-PERT Normal See [1]	m = observed value m_l = observed lower 95th percentile m_u = observed upper 95th percentile μ = observed fraction σ = observed standard error
Vaccination Coverage logarithm of 1 - VE	Season, month, age Season, month, age, type/subtype	Normal Normal	μ = observed fraction σ = observed standard error μ = observed $\log(1 - VE)$ σ = observed standard error of $\log(1 - VE)$

*Total hospitalizations (or outpatient visits) were calculated as the sum of simulated hospitalizations (or outpatient visits) for A(H1N1) + A(H3N2) + B.

1 References

[1] Rolfes, M. A. et al. Effects of Influenza Vaccination in the United States During the 2017–2018 Influenza Season. *Clin. Infect. Dis.* 69, 1845–1853 (2019).