

1 **Estimating historical disease burden and the impact of vaccination by influenza type and** 2 **subtype in the United States, 2016-2020**

3 Sinead E. Morris^{a,b,*}, Sarabeth M. Mathis^a, Jessie R. Chung^a, Brendan Flannery^a, Alissa O'Halloran^a,
4 Charisse N. Cummings^a, Shikha Garg^a, Peng-Jun Lu^c, Tammy A. Santibanez^c, Carrie Reed^a, Matthew
5 Biggerstaff^a, A. Danielle Iuliano^a

6
7 ^a*Influenza Division, Centers for Disease Control and Prevention, Atlanta, GA, USA, 30329*

8 ^b*Goldbelt Professional Services, Chesapeake, VA, USA, 23320*

9 ^c*Immunization Services Division, Centers for Disease Control and Prevention, Atlanta, GA, USA, 30329*

10

11 ***Corresponding author:** run7@cdc.gov

12

13 **Disclaimer:** The findings and conclusions in this report are those of the authors and do not necessarily
14 represent the views of the Centers for Disease Control and Prevention.

15

16 **Highlights** (3-5 bullet points up to 85 characters each)

- 17 • Estimates of disease burden and vaccine-prevented burden inform influenza guidance.
- 18 • Contributions to burden from each virus type and subtype vary by season and age.
- 19 • A(H3N2) caused the greatest total disease burden from the 2016/17 to 2019/20 seasons.
- 20 • Children <18 years experienced greater influenza B burden compared with other ages.
- 21 • Vaccination against A(H1N1) and B prevented the greatest percentage of severe disease.

22

23 **Abstract**

24 Seasonal influenza causes substantial morbidity and mortality in the United States. The U.S. Centers for
25 Disease Control and Prevention (CDC) uses a compartmental framework to estimate the annual disease
26 burden and burden prevented by vaccination for all influenza types and subtypes combined. However,
27 these estimates do not capture underlying shifts in disease burden caused by different circulating
28 influenza virus types or subtypes. We demonstrate an extension of the current framework to estimate
29 disease burden and burden prevented by vaccination for influenza A virus subtypes A(H1N1) and
30 A(H3N2), and influenza type B viruses. We applied this method to data from the 2016/17 to 2019/20
31 seasons that include age- and virus-specific hospitalizations and vaccine effectiveness estimates, and
32 age-specific vaccination coverage estimates. We estimated the number of symptomatic illnesses,
33 medically-attended illnesses, hospitalizations, and deaths caused by each virus, and the corresponding
34 number prevented by vaccination. Disease burden and vaccine-prevented burden varied substantially by
35 season, age, and virus type or subtype. The greatest disease burden was estimated in 2017/18, whereas

36 2019/20 had the greatest burden prevented by vaccination. Influenza A viruses contributed most to
37 disease burden in all seasons. Vaccination against influenza B viruses prevented the largest percentage of
38 hospitalizations among children and adults <65 years, whereas vaccination against A(H1N1) prevented
39 the largest percentage of hospitalizations among adults ≥65 years. Overall, our results highlight complex
40 variability in influenza disease burden by season, age, and virus type and subtype. These findings can be
41 used to improve understanding of the factors impacting influenza disease burden each season and to
42 enhance communications of the value of influenza vaccination.

43

44 **Keywords:** vaccination; seasonal influenza; influenza subtype; influenza burden

45

46 **Introduction**

47 Seasonal influenza viruses cause substantial morbidity and mortality in the United States. The U.S.
48 Centers for Disease Control and Prevention (CDC) estimates that between 9–41 million symptomatic
49 illnesses, 100,000–710,000 hospitalizations, and 5,000–52,000 deaths occur each year due to influenza¹.
50 Seasonal influenza vaccination is recommended for all persons ≥6 months old without contraindications
51 and prevents an estimated 1–7.5 million symptomatic illnesses, 22,000–100,000 hospitalizations and
52 1,000–12,000 deaths annually². Estimating influenza disease burden and the burden prevented by
53 vaccination is important for assessing the severity of seasonal influenza epidemics and communicating
54 the benefits of vaccination.

55 Currently, CDC estimates burden and burden prevented by vaccination using a compartmental
56 framework that models all influenza virus types and subtypes combined^{3,4}. However, these estimates do
57 not capture underlying shifts in disease burden caused by different influenza virus types (A vs. B) and
58 different influenza A subtypes (A(H1N1) vs. A(H3N2)) that can change seasonally due to complex
59 interactions between virus evolution, population immunity, and vaccine effectiveness (VE). Estimating
60 the different contributions of each type or subtype to overall disease burden and burden prevented by
61 vaccination could improve our understanding of the impact of influenza each season and its changing
62 epidemiological landscape.

63 In this paper, we demonstrate an extension of the current CDC framework to estimate disease
64 burden and burden prevented by vaccination by influenza virus type and subtype. We applied this
65 method to data from the 2016/17 to 2019/20 seasons that include age- and virus-specific
66 hospitalizations and VE estimates, and age-specific vaccination coverage estimates. Our method can be

67 combined with annual disease burden calculations to enhance communications of the risks of influenza
68 and the benefits of seasonal influenza vaccination.

69

70 **Methods**

71 *Surveillance data*

72 We used surveillance data spanning the 2016/17 to 2019/20 influenza seasons. Unless otherwise
73 specified, data were aggregated into six age groups: 0–6 months, 6 months–4 years, 5–17 years, 18–49
74 years, 50–64 years, and ≥65 years. Monthly numbers of laboratory-confirmed influenza-associated
75 hospitalizations were obtained from the Influenza Hospitalization Surveillance Network (FluSurv-NET), a
76 population-based hospitalization surveillance network that represents approximately 29 million people
77 in the United States⁵. These data included the total number of hospitalizations, the number of
78 hospitalizations attributed to influenza A and influenza B, and the proportions of influenza A
79 hospitalizations that were attributed to A(H1N1) and A(H3N2) (Tables S1–S2, Figure S1). The latter
80 proportions incorporated imputed influenza A subtype information (which was originally missing for
81 approximately 55–60% of influenza A cases each season)^{6,7,8}. FluSurv-NET also provided information on
82 the total catchment population for each age group⁹. To account for under-ascertainment of laboratory
83 confirmed influenza hospitalizations, we calculated age-specific under-detection multipliers based on
84 testing practice information from FluSurv-NET sites and diagnostic test sensitivity⁹.

85 In addition to the distributions of virus type and subtype among influenza-associated
86 hospitalizations, we obtained corresponding distributions for laboratory-confirmed influenza-associated
87 outpatient visits from the US Influenza Vaccine Effectiveness (Flu VE) Network¹⁰ (Table S2, Figure S2).
88 Since this system recruits participants for vaccine effectiveness studies, there were no distributions for
89 infants aged 0–6 months (who are not eligible for influenza vaccination). We therefore assumed
90 distributions in that age group were equivalent to distributions among children aged 6 months–4 years.
91 We verified that the distributions from the Flu VE Network and FluSurv-NET were similar to independent
92 data obtained from the World Health Organization (WHO) and National Respiratory and Enteric Virus
93 Surveillance System (NREVSS) Collaborating Labs and reported to CDC's FluView (Figure S3)¹¹.

94 Finally, vaccine effectiveness estimates for A(H1N1), A(H3N2), influenza B, and all influenza
95 viruses combined were obtained from the Flu VE Network, and vaccine coverage estimates were
96 obtained from FluVaxView for all age groups ≥6 months¹² (Table S1, Figure S4). We approximated the
97 population size for each age group and season using US Census data¹³.

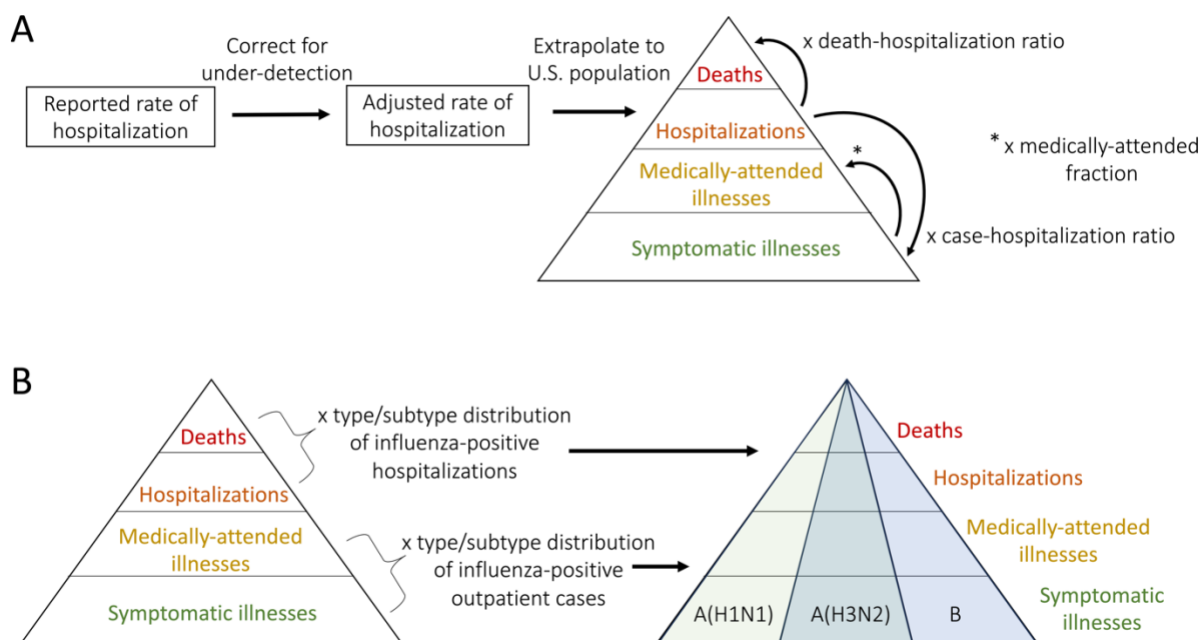
98

99 *Framework for estimating disease burden for influenza A(H1N1), A(H3N2), and B*

100 The methods employed by CDC to estimate disease burden and burden prevented by vaccination for all
101 influenza (i.e., for all viruses combined) have been described previously^{3,4,14–17} (Figure 1A). Briefly, the
102 monthly number of influenza-associated hospitalizations for each age group are first translated to rates
103 by dividing by the FluSurv-NET catchment population. These rates are then corrected for under-detection
104 of influenza-related hospitalizations and extrapolated to estimate total influenza hospitalizations in the
105 US population using the age-specific US census estimates. Numbers of symptomatic influenza illnesses
106 and deaths are obtained by multiplying the extrapolated number of hospitalizations by age-specific
107 ratios for the number of symptomatic influenza cases per hospitalization (case-hospitalization ratio) and
108 deaths per hospitalization (death-hospitalization ratio), respectively^{3,18,16}. The number of medically-
109 attended illnesses are obtained by multiplying the number of symptomatic illnesses by age-specific
110 estimates of the fraction of people with influenza-associated illness that seek medical care¹⁹. Values for
111 the under-detection, case-hospitalization, death-hospitalization, and medically-attended multipliers are
112 provided in Table S3.

113 We extended these methods to generate virus type- and subtype-specific estimates (Figure 1B).
114 For each month and age group, hospitalizations were attributed to either influenza A or B using the
115 relative proportions of each virus type in FluSurv-NET. Hospitalizations attributed to influenza A were
116 further partitioned by subtype using the relative proportions of A(H1N1) and A(H3N2). We used the
117 same type and subtype proportions to partition the total number of deaths into those attributable to
118 A(H1N1), A(H3N2) and B. For symptomatic and medically-attended illnesses, we instead used the relative
119 type and subtype proportions among Flu VE Network outpatient cases as these more accurately reflect
120 virus distributions among non-hospitalized cases of influenza. When presenting results, we combined
121 estimates for the two youngest age groups (0–6 months and 6 months–4 years) into all children aged 0–4
122 years.

123



124
 125 **Figure 1. Framework for estimating disease burden.** (A) Framework for estimating age-specific burden estimates
 126 for all influenza viruses. For each age group, reported hospitalizations rates are corrected for under-detection and
 127 extrapolated to the total population. These are then translated to estimates of deaths and symptomatic illnesses
 128 using age-specific death-hospitalization ratios and case-hospitalization ratios, respectively. Symptomatic illnesses
 129 are translated to medically-attended illnesses using age-specific estimates of the fraction that are medically-
 130 attended. (B) Burden estimates are translated to type or subtype specific estimates using virus distributions
 131 reported among influenza-positive hospitalizations (from FluSurv-NET) or outpatient cases (from the Flu VE
 132 Network).

133
 134 **Framework for estimating burden prevented by vaccination for influenza A(H1N1), A(H3N2) and B**
 135 For each virus type or subtype (A(H1N1), A(H3N2), B, or all influenza viruses combined), the monthly,
 136 age-specific estimates of disease burden were combined with estimates of vaccine coverage and
 137 effectiveness to estimate the burden prevented by vaccination following previously described methods⁴
 138 (Figure 2). We excluded the 0–6 months age group since they are ineligible for vaccination. The
 139 population was divided into three categories, susceptible, effectively vaccinated, and (symptomatically)
 140 infected as follows. For each age group, α , and type or subtype, i , the number effectively vaccinated (EV)
 141 in each successive month m is calculated as

142

$$EV_{\alpha,i,m} = (P_{\alpha} - \sum_{j=1}^m C_{\alpha,i,j-1}) \times VC_{\alpha,m} \times VE_{\alpha,i},$$

143 where P_{α} is the starting population size (assuming everyone is susceptible at the beginning of the
 144 season), $VC_{\alpha,m}$ is the proportion vaccinated in that month, $VE_{\alpha,i}$ is the vaccine effectiveness against type

145 or subtype i , and $\sum_{j=1}^m C_{a,i,j-1}$ is the cumulative number of symptomatic illnesses estimated during the
146 disease burden calculations and occurring up to the previous month (with $C_{a,i,0} = 0$). This formulation
147 assumes that vaccination provides all-or-nothing protection (i.e., individuals either gain complete
148 immunity following vaccination or remain entirely susceptible) and that susceptible and infected
149 individuals are equally likely to be vaccinated. The number susceptible (S) is then estimated as

$$150 \quad S_{a,i,m} = P_a - \sum_{j=1}^m C_{a,i,j} - \sum_{j=1}^m EV_{a,i,j},$$

151 with the implicit assumption that individuals can be infected by more than one virus type or subtype
152 within a season.

153 The risk of symptomatic illness (R) is the number of symptomatic illnesses that occurred in the
154 current month, m , divided by the susceptible (i.e., at-risk) population in the previous month, $m-1$,

$$155 \quad R_{a,i,m} = \frac{C_{a,i,m}}{S_{a,i,m-1}}.$$

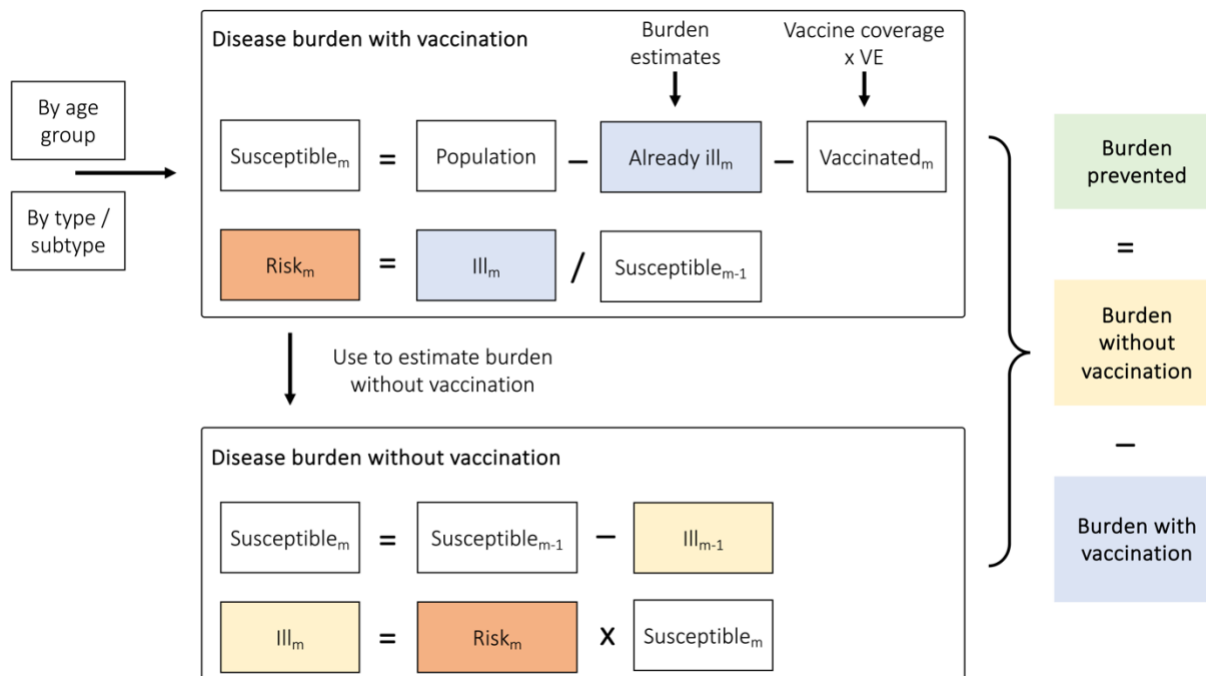
156 Similarly, the risks of medically-attended illness, hospitalization, and death are approximated by dividing
157 the value in month m (estimated during the disease burden calculations) by the susceptible population
158 in month $m-1$. We use these risks to estimate the number of symptomatic illnesses, medically-attended
159 illnesses, hospitalizations, and deaths in the absence of vaccination. The estimated number of
160 symptomatic illnesses without vaccination, \hat{C} , is

$$161 \quad \hat{C}_{a,i,m} = \hat{S}_{a,i,m} \times R_{a,i,m},$$

162 where the susceptible population without vaccination, \hat{S} , is now calculated iteratively as

$$163 \quad \hat{S}_{a,i,m} = \hat{S}_{a,i,m-1} - \hat{C}_{a,i,m-1},$$

164 with $\hat{S}_{a,i,0} = P_a$ and $\hat{C}_{a,i,0} = 0$. The number of symptomatic illnesses prevented by vaccination is then
165 $\hat{C}_{a,i,m} - C_{a,i,m}$. Analogous calculations were used to estimate the number of medically-attended
166 illnesses, hospitalizations, and deaths prevented by vaccination. For each variable, age group, and type
167 or subtype, we calculated the sum of burden prevented by vaccination across all months in the season.
168 We also calculated disease burden prevented by vaccination as a percentage of the total estimated
169 disease burden in the absence of vaccination, for example, $\frac{\hat{C}_{a,i} - C_{a,i}}{\hat{C}_{a,i}} \times 100\%$. Finally, we note that
170 estimates of burden prevented by vaccination for all influenza viruses combined may not always equal
171 the sum of burden prevented for A(H1N1), A(H3N2), and B viruses because we use independent
172 estimates of VE in each calculation.



173
 174 **Figure 2. General framework for estimating disease burden prevented by vaccination within each age group and**
 175 **virus type or subtype for a given season.** Independent calculations are performed for each age group and
 176 virus type or subtype. The procedure is performed iteratively for each month (denoted by the subscript 'm').
 177 Abbreviations: VE = vaccine effectiveness.

178
 179 **Uncertainty distributions**
 180 We generated uncertainty distributions for each disease burden and vaccine-prevented burden estimate
 181 using Monte Carlo simulation methods described previously^{20,21,22}. Key input variables were each
 182 assigned a probability distribution (Table S4), from which we generated 10,000 independent samples.
 183 We then re-performed the disease burden and vaccine-prevented burden calculations for each sample
 184 and reported uncertainty as the 95th percentiles of the resulting distribution. All analyses were
 185 performed in R version 4.2.0²³ and resulting estimates are reported to three significant figures.

186
 187 **Results**

188 *Estimated disease burden*

189 For the 2016/17 to 2019/20 seasons, total estimated influenza disease burden ranged from 29.4–41.0
 190 million symptomatic illnesses, 13.6–18.9 million medically-attended illnesses, 395,000–710,000
 191 hospitalizations, and 22,100–51,800 deaths. The greatest number of hospitalizations and deaths

192 occurred in 2017/18 (Figure 3A), and across all seasons the greatest proportion of hospitalizations and
193 deaths occurred among adults ≥ 65 years (Figure S5).

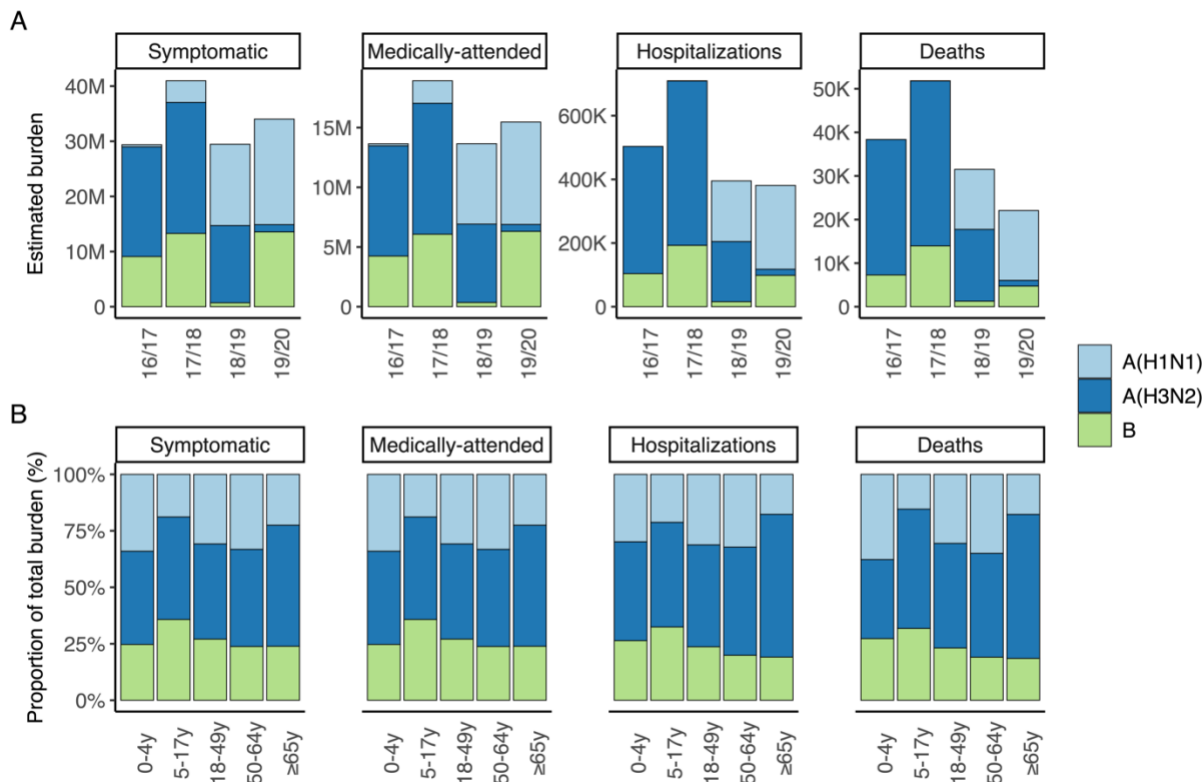
194 Among virus types and subtypes, A(H3N2) caused the greatest cumulative burden from
195 2016/17–2019/20, with 59.0 million total symptomatic illnesses, 27.3 million medically-attended
196 illnesses, 1.12 million hospitalizations and 86,700 deaths (Table 1). However, the contribution of each
197 type and subtype to overall disease burden varied by season and age group (Figure 3, Figure S6).
198 Influenza A(H3N2) and B contributed most burden in 2016/17 and 2017/18, whereas A(H1N1) and
199 A(H3N2) contributed most burden in 2018/19, and A(H1N1) and B contributed most burden in 2019/20
200 (Figure 3A). For all age groups, influenza A viruses comprised the greatest proportion of burden across all
201 seasons, although the proportion attributed to influenza B viruses increased slightly among children < 18
202 years (Figure 3B).

203

204 **Table 1.** *Estimated disease burden by virus type or subtype. Numbers represent total estimated burden (and 95th*
205 *percentile uncertainty intervals) from 2016/17–2019/20 across all age groups and are reported to three significant*
206 *figures.*

Influenza type or subtype	Symptomatic illnesses (95 th uncertainty interval)	Medically-attended illnesses (95 th uncertainty interval)	Hospitalizations (95 th uncertainty interval)	Deaths (95 th uncertainty interval)
A(H1N1)	38.2 million (34.2–52.8 million)	17.4 million (15.7–23.4 million)	456,000 (393,000–685,000)	29,800 (20,600–66,500)
A(H3N2)	59.0 million (54.7–72.0 million)	27.3 million (25.5–33.4 million)	1.12 million (968,000–1.58 million)	86,700 (63,300–160,000)
B	36.7 million (33.5–48.9 million)	17.0 million (15.6–22.3 million)	411,000 (365,000–559,000)	27,200 (20,400–48,800)
All influenza	134 million (125–167 million)	61.7 million (58.0–76.0 million)	1.99 million (1.76–2.69 million)	144,000 (111,000–256,000)

207



208
 209 **Figure 3. Estimated disease burden.** (A) Point estimates of disease burden by type/subtype and season. (B)
 210 Distribution of type/subtypes causing burden in each age group, for all four seasons. Estimates by age group,
 211 season, and type/subtype, with corresponding 95th percentile uncertainty intervals, are shown in Figure S6.

212
 213 *Estimated burden prevented by vaccination*

214 Vaccine coverage was highest among children 6 months–4 years and adults ≥65 years, and during the
 215 2018/19 and 2019/20 seasons (Table S1, Figure S4A). VE varied substantially by season, age group, and
 216 virus type or subtype. Broadly, VE was highest in 2017/18 and lowest in 2018/19, decreased with
 217 increasing age, and was lower against A(H3N2) than A(H1N1) and B (Table S1, Figure S4B). One notable
 218 exception occurred in 2019/20, when adults ≥65 years experienced relatively high VE against A(H1N1)
 219 and A(H3N2).

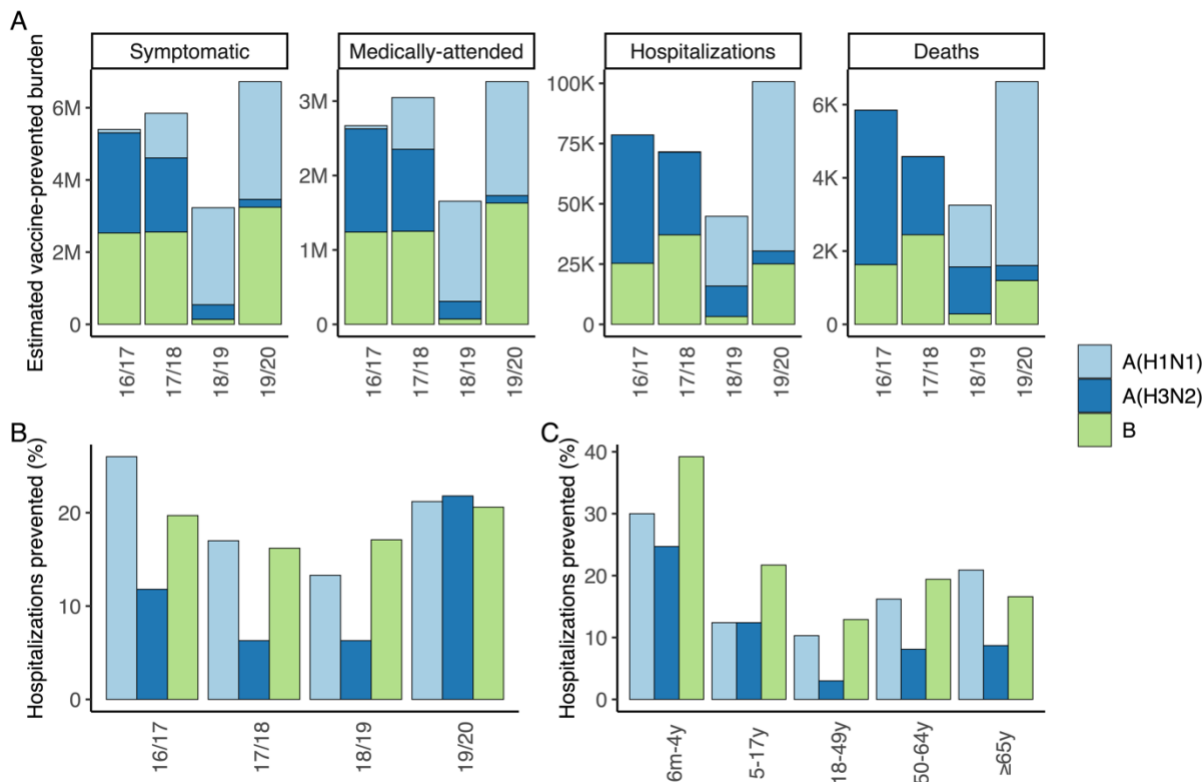
220 From 2016/17 to 2019/20, total estimated burden prevented by vaccination ranged from 2.85–
 221 6.74 million symptomatic illnesses, 1.49–3.28 million medically-attended illnesses, 35,800–98,500
 222 hospitalizations, and 2,520–6,370 deaths. The greatest burden prevented by vaccination occurred in
 223 2019/20 (Figure 4A). For all seasons, the greatest number of hospitalizations were prevented among
 224 adults ≥65 years, whereas the greatest percent of hospitalizations were generally prevented among
 225 children 6 months–4 years (Figure S7).

226 Among type and subtypes, the largest cumulative number of hospitalizations and deaths were
227 prevented by vaccination against influenza A(H3N2), whereas the largest number of symptomatic and
228 medically-attended illnesses were prevented by vaccination against influenza B (Table 2). In line with our
229 disease burden estimates, vaccination against influenza A(H3N2) and B prevented most burden in
230 2016/17 and 2017/18, whereas vaccination against A(H1N1) and A(H3N2) prevented most burden in
231 2018/19, and vaccination against A(H1N1) and B prevented most burden in 2019/20 (Figure 4A, Figure
232 S8). Among seasons, the percent of hospitalizations prevented was generally highest for A(H1N1) and B,
233 with substantially lower percentages for A(H3N2) (except in 2019/20 when the overall burden of
234 A(H3N2) was low) (Figure 4B). This was also true among age groups, with vaccination against influenza B
235 preventing the highest percentage of hospitalizations among children and adults <65 years, and
236 vaccination against A(H1N1) preventing the highest percentage among adults ≥65 years (Figure 4C).

237
238 **Table 2.** *Estimated vaccine-prevented disease burden by virus type or subtype. Numbers represent total prevented*
239 *disease burden (and 95th percentile uncertainty intervals) from 2016/17–2019/20 across all age groups and are*
240 *reported to three significant figures.*

Influenza type or subtype	Symptomatic illnesses (95 th uncertainty interval)	Medically-attended illnesses (95 th uncertainty interval)	Hospitalizations (95 th uncertainty interval)	Deaths (95 th uncertainty interval)
A(H1N1)	7.28 million (6.19–9.83 million)	3.62 million (3.10–4.81 million)	99,500 (71,100–172,000)	6,720 (3,780–17,100)
A(H3N2)	5.45 million (4.75–7.76 million)	2.83 million (2.45–4.05 million)	106,000 (75,000–195,000)	8,050 (4,750–19,500)
B	8.47 million (7.36–11.3 million)	4.19 million (3.64–5.55 million)	90,700 (70,100–131,000)	5,550 (3,540–10,500)
All influenza	20.9 million (18.9–27.0 million)	10.6 million (9.54–13.6 million)	289,000 (233,000–439,000)	19,400 (13,100–39,000)

241



242
 243 **Figure 4.** Estimated burden prevented by vaccination. (A) Point estimates for total averted burden by type/subtype
 244 and season. (B) Percent of hospitalizations averted by type/subtype and season (for all age groups). (C) Percent of
 245 hospitalizations averted by type/subtype and age group (across all four seasons). Estimates by age group, season,
 246 and type or subtype, with corresponding 95th percentile uncertainty intervals, are shown in Figure S8.
 247

248 Discussion

249 In this paper, we have demonstrated an extension to current CDC methods for estimating disease burden
 250 and burden prevented by vaccination for influenza that partitions burden among different influenza virus
 251 types and subtypes. During the 2016/17 to 2019/20 seasons, we estimated substantial influenza-
 252 associated disease burden and burden prevented by vaccination. In general, influenza A viruses were the
 253 greatest contributor to disease burden, particularly A(H3N2), and children <18 years were more
 254 impacted by influenza B viruses than other age groups. The greatest percentage of hospitalizations were
 255 prevented by vaccination against influenza A(H1N1) and B viruses. Overall, our framework can improve
 256 understanding of the impact of influenza each season and enhance communications of the benefits of
 257 influenza vaccination.

258 There are many factors that can affect disease burden and vaccine-prevented burden each
 259 season, including virus evolution and strain circulation dynamics, VE and vaccine coverage, population
 260 immunity from prior seasons, prevalence of underlying health conditions, and other factors influencing

261 transmission dynamics (for example, individual behavior). Lower VE for A(H3N2) viruses compared to
262 A(H1N1) and B viruses may explain why we estimated the greatest disease burden and lowest percent of
263 burden prevented by vaccination for A(H3N2). Similarly, a combination of relatively high vaccine
264 coverage and VE against A(H1N1) among older age groups in 2019/20 may partly explain the high levels
265 of vaccine-prevented burden estimated in that season. More generally, our framework provides a path to
266 explore how these interacting factors combine to impact the burden of influenza and impact of
267 vaccination at the population-level.

268 Limitations to the CDC method for estimating burden and vaccine-prevented burden for all
269 influenza viruses have been discussed previously^{3,4}. These include caveats that the framework assumes
270 protection from vaccination is ‘all-or-nothing’, uses one value for VE against all outcomes, and does not
271 account for indirect protection through herd immunity or waning immunity. With respect to data inputs,
272 the vaccination coverage information was based on self- (or parent-) assessment and may be subject to
273 recall bias, although previous work has found good agreement between self-reported vaccination status
274 among adults and vaccination status ascertained from medical records²⁴. In addition, the FluSurv-NET
275 surveillance system covers approximately 9% of the U.S. population and may not be representative of
276 the population as a whole. Influenza A subtype was also imputed for approximately 55-60% of influenza
277 A hospitalizations each season and could be subject to misclassification, although the rates of this are
278 expected to be low^{6,8}. Finally, the case-hospitalization ratio and fraction of cases that seek medical care
279 were estimated during the 2009 H1N1 pandemic and will not reflect any changes to care-seeking and
280 hospital admission rates that have occurred since then.

281 When extending the method to account for virus type and subtype there are several further
282 limitations to consider. First, we assumed the case-hospitalization ratios and care-seeking fractions were
283 equal for influenza A(H1N1), A(H3N2) and B. Further information on whether care-seeking and rates of
284 hospital admission change by virus type and subtype would be needed to incorporate this into our
285 extended framework. Secondly, by running independent models for each type and subtype, we implicitly
286 assumed that an individual could be infected by multiple viruses within the same season. Although this
287 assumption ignores any cross-immunity between A(H1N1), A(H3N2), or B viruses, we expect the
288 individual-level risk of being infected by more than one influenza virus to be relatively low within a
289 season and thus our results should not be substantially impacted. Finally, we did not partition estimates
290 of disease burden or vaccine-prevented burden by influenza B lineages (B/Yamagata and B/Victoria) as
291 the hospitalization and outpatient data did not contain this information. We are exploring additional
292 methods to partition estimates by influenza B lineage in related work.

293 Here we have demonstrated how existing methods to estimate the disease burden and vaccine-
294 prevented burden of influenza can be extended to estimate contributions from different virus types and
295 subtypes. We found substantial disease burden and vaccine-prevented burden for all influenza types and
296 subtypes across seasons and age groups, underscoring the importance of annual influenza vaccination.
297 This is particularly relevant given recent declines in influenza vaccine coverage since the COVID-19
298 pandemic¹². In addition, our results included complex variability by season, age, and vaccine coverage
299 and effectiveness, and can be used to track changes in influenza strain dynamics in future seasons while
300 enhancing our understanding of the burden of influenza viruses and impact of vaccination.

301

302 **Funding:** This research did not receive any specific grant from funding agencies in the public,
303 commercial, or not-for-profit sectors.

304

305 **Conflicts of Interest:** The authors have no competing interests to declare.

306

307 **Acknowledgments:** The authors thank Anup Srivastav, Anurag Jain, and Mei-Chuan Hung for their
308 contributions to obtaining the vaccination coverage estimates.

309

310 **Author Contributions:** All authors attest they meet the ICMJE criteria for authorship.

311

312 **Data availability statement:** All data were the result of secondary analyses. The majority are publicly
313 available and the relevant links are cited in the text. A small portion are not publicly available due to
314 privacy restrictions but are available upon reasonable request to the authors.

315

316 **References**

317 1. CDC. About Estimated Flu Burden. 2024. Accessed October 4, 2024. [https://www.cdc.gov/flu-](https://www.cdc.gov/flu-burden/php/about/index.html)
318 [burden/php/about/index.html](https://www.cdc.gov/flu-burden/php/about/index.html)

319 2. CDC. Flu Burden Prevented by Vaccination. 2024. Accessed October 4, 2024. [https://www.cdc.gov/flu/vaccines-](https://www.cdc.gov/flu/vaccines-work/burden-prevented.htm)
320 [work/burden-prevented.htm](https://www.cdc.gov/flu/vaccines-work/burden-prevented.htm)

321 3. Rolfes MA, Foppa IM, Garg S, et al. Annual estimates of the burden of seasonal influenza in the United States: A
322 tool for strengthening influenza surveillance and preparedness. *Influenza Other Respir Viruses*.
323 2018;12(1):132-137. doi:10.1111/irv.12486

324 4. Tokars JI, Rolfes MA, Foppa IM, Reed C. An evaluation and update of methods for estimating the number of
325 influenza cases averted by vaccination in the United States. *Vaccine*. 2018;36(48):7331-7337.
326 doi:10.1016/j.vaccine.2018.10.026

- 327 5. CDC. Influenza Hospitalization Surveillance Network (FluSurv-NET). 2024. Accessed April 29, 2024.
328 <https://www.cdc.gov/fluview/overview/influenza-hospitalization-surveillance.html>
- 329 6. Sumner KM, Masalovich S, O'Halloran A, et al. Severity of influenza-associated hospitalisations by influenza virus
330 type and subtype in the USA, 2010–19: a repeated cross-sectional study. *Lancet Microbe*. 2023;4(11):e903-
331 e912. doi:10.1016/S2666-5247(23)00187-8
- 332 7. Chow EJ, Rolfes MA, O'Halloran A, et al. Acute Cardiovascular Events Associated With Influenza in Hospitalized
333 Adults. *Ann Intern Med*. 2020;173(8):605-613. doi:10.7326/M20-1509
- 334 8. Holstein R, Dawood FS, O'Halloran A, et al. Characteristics and Outcomes of Hospitalized Pregnant Women With
335 Influenza, 2010 to 2019. *Ann Intern Med*. 2022;175(2):149-158. doi:10.7326/M21-3668
- 336 9. Millman AJ, Reed C, Kirley PD, et al. Improving Accuracy of Influenza-Associated Hospitalization Rate Estimates.
337 *Emerg Infect Dis*. 2015;21(9):1595-1601. doi:10.3201/eid2109.141665
- 338 10. CDC. US Flu VE Network. 2023. Accessed March 26, 2024. [https://www.cdc.gov/flu-vaccines-work/php/vaccine-
339 effectiveness/us-flu-ve-network.html](https://www.cdc.gov/flu-vaccines-work/php/vaccine-effectiveness/us-flu-ve-network.html)
- 340 11. CDC. FluView Interactive. 2023. Accessed February 14, 2024. [https://www.cdc.gov/fluview/overview/fluview-
interactive.html](https://www.cdc.gov/fluview/overview/fluview-
341 interactive.html)
- 342 12. CDC. FluVaxView. 2023. Accessed February 14, 2024. <https://www.cdc.gov/fluvoxview/>
- 343 13. US Census Bureau. National Population by Characteristics: 2010-2019. 2021. Accessed March 26, 2024.
344 <https://www.census.gov/data/datasets/time-series/demo/popest/2010s-national-detail.html>
- 345 14. CDC. How CDC Estimates the Burden of Flu Prevented by Vaccination. 2024. Accessed October 4, 2024.
346 <https://www.cdc.gov/flu-burden/php/about-burden-prevented/how-cdc-estimates-vaccinations.html>
- 347 15. CDC. How CDC Estimates the Burden of Seasonal Flu in the United States. 2023. Accessed October 4, 2024.
348 <https://www.cdc.gov/flu-burden/php/about/how-cdc-estimates.html>
- 349 16. Reed C, Chaves SS, Kirley PD, et al. Estimating Influenza Disease Burden from Population-Based Surveillance
350 Data in the United States. *PLOS ONE*. 2015;10(3):e0118369. doi:10.1371/journal.pone.0118369
- 351 17. Kostova D, Reed C, Finelli L, et al. Influenza Illness and Hospitalizations Averted by Influenza Vaccination in the
352 United States, 2005–2011. *PLOS ONE*. 2013;8(6):e66312. doi:10.1371/journal.pone.0066312
- 353 18. Reed C, Angulo FJ, Swerdlow DL, et al. Estimates of the Prevalence of Pandemic (H1N1) 2009, United States,
354 April–July 2009. *Emerg Infect Dis*. 2009;15(12):2004-2007. doi:10.3201/eid1512.091413
- 355 19. Biggerstaff M, Jung M, Kamimoto L, Balluz L, Finelli L. Self-Reported Influenza-Like Illness and Receipt of
356 Influenza Antiviral Drugs During the 2009 Pandemic, United States, 2009–2010. *Am J Public Health*.
357 2012;102(10):e21-e26. doi:10.2105/AJPH.2012.300651
- 358 20. Rolfes MA, Flannery B, Chung JR, et al. Effects of Influenza Vaccination in the United States During the 2017–
359 2018 Influenza Season. *Clin Infect Dis*. 2019;69(11):1845-1853. doi:10.1093/cid/ciz075
- 360 21. Steele MK, Couture A, Reed C, et al. Estimated Number of COVID-19 Infections, Hospitalizations, and Deaths
361 Prevented Among Vaccinated Persons in the US, December 2020 to September 2021. *JAMA Netw Open*.
362 2022;5(7):e2220385. doi:10.1001/jamanetworkopen.2022.20385

- 363 22. Chung JR, Rolfes MA, Flannery B, et al. Effects of Influenza Vaccination in the United States During the 2018-
364 2019 Influenza Season. *Clin Infect Dis Off Publ Infect Dis Soc Am*. 2020;71(8):e368-e376.
365 doi:10.1093/cid/ciz1244
- 366 23. R Core Team. R: A language and environment for statistical computing. Published online 2022. [https://www.R-](https://www.R-project.org/)
367 [project.org/](https://www.R-project.org/)
- 368 24. Rolnick SJ, Parker ED, Nordin JD, et al. Self-report compared to electronic medical record across eight adult
369 vaccines: Do results vary by demographic factors? *Vaccine*. 2013;31(37):3928-3935.
370 doi:10.1016/j.vaccine.2013.06.041
- 371