

Manuscript Title: Associations between Urinary Pesticide Metabolites and Serum Inflammatory Biomarkers in Adolescents Living in an Agricultural Region

Authors: Mohammed N. Hussari¹, Briana N.C. Chronister^{2,3}, Kun Yang², Xin Tu², Danilo Martinez⁴, Rajendra P Parajuli², Jose Suarez-Torres⁴, Dana Boyd Barr⁵, Suzi Hong^{2,6#}, Jose R. Suarez-Lopez^{2*,#}

Affiliation:

¹University of California San Diego (UCSD) School of Medicine, 9500 Gillman Dr, CA 92093, USA

²Herbert Wertheim School of Public Health and Human Longevity Science, University of California San Diego (UCSD), 9500 Gillman Dr. MC: 0725, 92093-0725 CA, USA

³School of Public Health, San Diego State University, San Diego, California, USA.

⁴Fundación Cimas del Ecuador (CIMAS), De los Olivos E14-226 y, Quito 170124, Ecuador

⁵Rollins School of Public Health, Emory University, 1518 Clifton Road, NE, Atlanta, GA 30322, USA

⁶Department of Psychiatry, School of Medicine, University of California San Diego

#Co-senior authors

***Corresponding Author:**

Jose Ricardo Suarez, MD, PhD

Herbert Wertheim School of Public Health and Human Longevity Science,

University of California San Diego (UCSD), 9500 Gillman Dr. MC 0725, La Jolla, CA 92093-0725, USA

Email: jrsuarez@health.ucsd.edu, Phone: 1-858-822-0165

Email Addresses

MNH: mhussari@health.ucsd.edu 0009-0006-1883-817X

BNC: bcortez@health.ucsd.edu 0000-0002-8941-3981

KY: kuyang@health.ucsd.edu NA

XMT: x2tu@health.ucsd.edu 0000-0001-6470-980X

DM: dmartinez@cimas.edu.ec 0000-0001-6342-5928

RPP: rparajuli@health.ucsd.edu 0000-0002-4899-7212

JST: jsuarez@cimas.edu.ec 0000-0003-0318-6798

DB: dbarr@emory.edu 0000-0002-5566-2138

SH: slhong@health.ucsd.edu 0000-0003-0300-5950

JRS: jrsuarez@health.ucsd.edu 0000-0001-9738-137X

ABSTRACT

Background

In-vitro and in-vivo studies have shown evidence for the immuno-modulatory properties of different pesticides. However, few epidemiological studies on inflammation and pesticide exposure exist, with none in children and adolescents. Associations between pesticide metabolites in urine and inflammatory biomarkers in serum were evaluated among children and adolescents (n=512) of rural Ecuador as part of the ESPINA study

Methods

Seventeen urinary biomarkers of insecticide, herbicide and N, N-diethyl-meta-toluamide (DEET) insect repellent exposure were measured. Among them, acetamiprid-N-desmethyl [AND], 3,5,6-Trichloro-2-pyridinol [TCPy], para-nitrophenol [PNP], malathion dicarboxylic acid [MDA], 3-phenoxybenzoic acid [3-PBA], 2,4-Dichlorophenoxyacetic acid [2,4-D], glyphosate and 3-(diethylcarbamoyl) benzoic acid [DCBA] were included in analyses as they were detected in >30% of participants. Serum analysis included c-reactive protein (CRP), interleukin-6 (IL-6), tumor necrosis factor- α (TNF- α), soluble intercellular adhesion molecule-1 (sICAM-1), soluble vascular cell adhesion molecule-1 (sVCAM-1), serum amyloid A (SAA), and soluble CD14 (sCD14). Associations were evaluated by generalized estimating equations (GEE) and partial least squares (PLS) regression, adjusting for demographic, anthropometric and socioeconomic variables.

Results

Positive quadratic associations were found between 2,4-D and CRP ($\beta^2=0.13$, [0.00, 0.27]), IL-6 ($\beta^2=0.10$, [0.04, 0.15]), SAA ($\beta^2=0.13$, [0.01, 0.30]), sICAM-1 ($\beta^2=53.25$, [27.26, 79.24]) and sVCAM-1 ($\beta^2=61.11$, [30.52, 91.70]). The pesticide metabolites PLS composite variable was positively associated with IL-6 ($\beta=0.09$, [0.01, 0.17]), SAA ($\beta=0.43$, [0.13, 0.17]), sICAM-1 ($\beta=63.52$, [9.92, 117.13]), sVCAM-1 ($\beta=69.03$, [8.29, 129.76]) and TNF- α ($\beta=0.08$, [0.00, 0.16]), and negatively associated with CRP ($\beta=-0.28$, [-0.49, -0.08], Figure 1).

Conclusions

Our findings demonstrate a novel pesticide/herbicide-inflammation link in adolescents, which may be an underlying mechanism of the health impacts of pesticides/herbicides.

Key Words: Inflammation, Pesticides, Agriculture, Ecuador, Cytokines, Adolescents

57 **Introduction**

58 Pesticide use in agriculture has soared in recent decades due to the Green Revolution,
59 which introduced agrochemical use in human farming practices (Hayes and Hansen 2017). The
60 Green Revolution's technological package increased agricultural yields and profits but came
61 with significant environmental and health consequences (Suárez-Torres et al. 2017). In addition
62 to acute toxicities, there is emerging evidence from human, animal and in-vitro models that
63 chronic, low-level exposure to pesticides can have significant health consequences, including
64 neurocognitive and neurodegenerative disorders such as ADHD, Parkinson's disease, other
65 pathologies including bladder and hematologic cancers, and changes in cytokine mRNA
66 expression (Henderson et al. 2002; de Souza et al. 2011; Baltazar et al. 2014; Koutros et al.
67 2016).

68 Although various studies have demonstrated associations between inflammation status
69 and the use of agrochemicals, many of the studies examining the relationship between
70 inflammation and pesticides are largely confined to in vitro and animal models (Agrawal et al.
71 2015a; Singh et al. 2016; Patel et al. 2018; Miao et al. 2022; Deng et al. 2022). Only a handful of
72 studies have illustrated the effects of pesticide exposure on inflammation in humans.
73 Inflammation, particularly chronic systemic inflammation, has been implicated in the
74 pathogenesis of the world's most disabling and deadly diseases, including cardiovascular
75 disease, chronic kidney disease, diabetes mellitus, non-alcoholic fatty liver disease,
76 neurodegenerative disease and autoimmune disease (Furman et al. 2019).

77 Growing evidence indicates that human agricultural workers are at increased risk for
78 inflammatory diseases. A meta-analysis of 14 different studies that examined pesticide exposure
79 across various classes found evidence for associations between various pesticides and
80 Parkinson's disease (Huang et al. 2022), which is believed to involve a neuroinflammatory
81 process in its pathogenesis (Priyadarshi et al. 2001; Tansey et al. 2022; Huang et al. 2022).
82 Similarly, a study of adult male pesticide applicators found that those diagnosed with rheumatoid
83 arthritis (RA) had greater intensity-weighted lifetime use of certain insecticides and herbicides
84 than did those without a confirmed RA diagnosis (Armando et al. 2024). Another study found
85 that participants with recently diagnosed systemic lupus erythematosus (SLE) had higher odds of
86 having ever worked in pesticide mixing (Cooper et al. 2004). Similarly, in a cohort of
87 greenhouse insecticide applicators, the use of neonicotinoids, organophosphates, and pyrethroids

88 was associated with elevated levels of interleukin-22 (IL-22), a cytokine with complex pro- and
89 anti-inflammatory functions. (Fenga et al. 2014). In contrast to these findings, a study found that
90 male pesticide sprayers exposed to the pyrethroid cypermethrin had reduced levels of the
91 proinflammatory cytokines IL-2, IL-8, IL-12 and interferon-gamma (IFN- γ) compared to those
92 of male office workers who served as controls with less pesticide exposure. (Costa et al. 2013).

93 A limited number of studies have characterized the associations between pesticide
94 exposure and inflammation biomarkers, and none have been found in pediatric populations.
95 Mwanga et al. performed a cross-sectional study involving 113 women residing on farms in
96 South Africa, and 98 women living in neighboring towns to examine the associations between
97 urinary pesticide metabolites and various outcomes, including cytokine profiles for IL-4, IL-5,
98 IL-6, IL-8, IL-10, IL-13 and IL-17, and found a consistent trend of increased cytokines with
99 higher concentrations of various organophosphate and pyrethroid metabolites (Mwanga et al.
100 2016). The association between use of pesticide mixtures, as reported through questionnaires,
101 and various cytokines was studied in a group of 108 floriculture workers in Mexico, and it was
102 found that the levels of IL-6 and IFN- γ were higher amongst those with greater exposure
103 (Godínez-Pérez et al. 2024). One small study involving 31 farm workers occupationally exposed
104 to pesticides and city-dwelling unexposed controls matched for age and sex found significant
105 increases in IL-6 concentrations among participants categorized as exposed (El-Gameel et al.
106 2023). Another small study in Brazil compared the cytokine levels of farmworkers with reported
107 occupational pesticide exposure to those of healthy controls and revealed that IL-6 was elevated
108 in the exposed group (Jacobsen-Pereira et al. 2020). Similarly, Da Silva et al. reported that
109 women with breast cancer who reported occupational exposure to pesticides had the worst
110 prognostic features, a shift in helper T-cell (Th) profiles from Th1 to Th2, and a decrease in IL-
111 17A, IL-1B and IL-4 in those with lymph node invasion (da Silva et al. 2022b).

112 Studies using in vitro and animal models have supported findings from human
113 observational studies, demonstrating that insecticide exposure can upregulate inflammation. This
114 includes upregulation of nuclear factor kappa beta (NF- $\kappa\beta$), tumor necrosis factor alpha (TNF- α),
115 IL-1 β , and IL-6 associated with neonicotinoid insecticide exposure (Miao et al. 2022; Deng et al.
116 2022), as well as elevated pro-inflammatory markers in the substantia nigra and microglia
117 (Agrawal et al. 2015a, b; Hossain et al. 2017). Additionally, pyrethroid exposure has been linked
118 to increased reactive oxygen species (ROS) production, while organophosphate insecticide

119 exposure has been associated with the upregulation of IL-8 and TNF- α and the downregulation
120 of the anti-inflammatory cytokine IL-10 (Schäfer et al. 2013; Proskocil et al. 2019).
121 Organophosphates, and to a lesser extent the insect repellent N,N-Diethyl-3-methylbenzamide
122 (DEET), are known to inhibit acetylcholinesterase (AChE) activity (Corbel et al. 2009), and
123 alterations in the cholinergic system due to pesticide exposure can trigger inflammatory
124 responses and related pathophysiological changes or lead to reduced regulation of inflammation
125 via the cholinergic anti-inflammatory pathway (Mokarizadeh et al. 2015).

126 Herbicides represent another major class of pesticides, and glyphosate and 2,4-D are the
127 two most used herbicides worldwide. Animal and in vitro studies have found 2,4-D exposure to
128 be associated with increased inflammasome activation and elevated caspase-1, IL-1 β , IL-18, and
129 p62 protein expression (Zhou et al. 2022), and reduced glutathione stores in human erythrocytes,
130 suggesting that it is an oxidative stressor (Bukowska 2003). Glyphosate was found to upregulate
131 the expression of IL-1 β , TNF- α , IL-6, and C-reactive protein (CRP) in liver tissue samples
132 compared to controls (Pandey et al. 2019), and was associated with increased IL-33, TSLP, IL-
133 13, and IL-5, and increased numbers of eosinophils and neutrophils in lung tissue (Kumar et al.
134 2014). Glyphosate may disturb mitochondrial architecture and function, inducing ROS-mediated
135 inflammation (Qi et al. 2023).

136 Given the limited research on inflammation in humans as a function of pesticide
137 exposure, our study seeks to better understand whether urinary pesticide metabolites,
138 representing exposure to varying classes of pesticides, are associated with human inflammation
139 markers in adolescents living in agricultural settings in Ecuador. It is important to understand
140 how inflammation status is affected by pesticide exposure given the emerging evidence for
141 inflammation-mediated pathogenesis of various diseases (Furman et al. 2019). We hypothesized
142 that insecticide and herbicide urinary metabolites would positively associate with serum
143 inflammatory biomarkers.

144

145 **Materials and Methods**

146 **Study Population**

147 The study of Secondary Exposures to Pesticides among Children and Adolescents
148 (ESPINA) is a prospective cohort study focused on understanding the effects of pesticide
149 exposure on the development of children and adolescents residing in the agricultural county of

150 Pedro Moncayo, Pichincha Province, Ecuador. The ESPINA study was established in 2008 and
151 examined 313 boys and girls aged 4-9 years. Participants were recruited mostly through
152 community announcements for their participation in the “2004 Survey of Access and Demand of
153 Health Services in Pedro Moncayo County,” a representative survey of Pedro Moncayo County
154 collected by Fundación Cimas del Ecuador in conjunction with the communities of Pedro
155 Moncayo County. Details about participant recruitment in 2008 have been described previously
156 (Suarez-Lopez et al. 2013). In 2016, the cohort was expanded, and two examinations were
157 conducted. We examined a total of 554 participants in 2016: 330 participants in April and 535 in
158 July-October, with 311 participants examined during both time periods. Participants in 2016
159 (Suarez-Lopez et al. 2020) were 12-17 years of age and included 238 participants examined in
160 2008 and 316 new volunteers (Suárez-López et al. 2020). The System of Local and Community
161 Information (SILC) developed by Fundación Cimas del Ecuador was used to recruit new
162 participants in 2016. The SILC included information from the 2016 Community Health Survey
163 of Pedro Moncayo County (formerly the Survey of Access and Demand of Health Services in
164 Pedro Moncayo). None of the participants reported working in agriculture in either 2008 or 2016.
165 Additional details of participant recruitment in 2016 have been published (da Silva et al. 2022a).

166 To maximize the number of participants included in our analyses, we imputed missing
167 data for parental education in 2016 (n=10), as well as residential distance to the nearest flower
168 plantation in 2008 (n=3). Among the children who were examined in 2008 but were missing
169 parental education data in 2016 (n=5), data for parental education were imputed using the 2008
170 data for maternal and paternal education. For participants with missing paternal and maternal
171 education data in 2008 and missing parental education in 2016 (n=5), a random imputation was
172 conducted for each variable based on a normal distribution of the variable during the respective
173 examination period. Since a small number of participants reported being White (n=4), we
174 grouped these 6 participants in the mestizo (mix of White and Indigenous) category to improve
175 model stability when adjusting for ethnicity.

176 The present analysis includes 512 participants examined in the July-October 2016 who
177 had all covariates of interest: 8 observations were excluded due to missing inflammatory marker
178 data and another 15 due to missing covariate data.

179 The 2016 examination of the ESPINA study was approved by the Institutional Review
180 Boards of the University of California San Diego (UCSD), Universidad San Francisco de Quito

181 and the Ministry of Public Health of Ecuador and endorsed by the Commonwealth of Rural
182 Parishes of Pedro Moncayo County. We obtained informed consent from adult participants (aged
183 18 years or older) and parents, as well as parental permission of participation and informed
184 assent of child participants.

185

186 **Data Collection**

187 **Examination and Survey**

188 In 2016, children were examined in 7 schools when they were out of session between
189 July and October. The examiners were unaware of the participants' potential exposures. Home
190 interviews with parents and adult residents were conducted to gather socioeconomic and
191 demographic information. Participant ethnicity was categorized into 2 groups: 114 Indigenous
192 and 407 Mestizo participants.

193

194 **Anthropometric measures**

195 Participant height was assessed using a height board following recommended guidelines,
196 and weight was measured using a digital scale (Tanita model 0108 MC; Tanita Corporation of
197 America, Arlington Heights, IL, USA). We calculated z-scores for height-for-age (Z-height-for-
198 age) and body mass index-for-age (Z-BMI-for-age) using the World Health Organization growth
199 standards (World Health Organization 2006).

200

201 **Biospecimen analysis**

202 All biospecimens were collected on the same day, including urine and venous blood.

203 **Inflammation markers**

204 Venipuncture of the median cubital or cephalic veins in the arm was conducted by a
205 phlebotomist following standard guidelines without fasting (Clinical and Laboratory Standards
206 Institute 2007). Blood samples were centrifuged and aliquoted on site and transported on dry ice
207 to Quito, approximately 45-55 km from the various blood collection sites across Pedro Moncayo,
208 for storage at -70°C. Samples were then shipped to the University of California San Diego
209 (UCSD) at -20°F using an overnight courier. Samples were stored at -80°C at UCSD until they
210 were analyzed for inflammation marker quantification at the UCSD Integrative Health Mind-
211 Body Biomarker Core. Multiplex assay kits were used to measure plasma levels of pro-

212 inflammatory markers including TNF- α , IL-6, CRP, soluble intercellular adhesion molecule-1
213 (sICAM-1), serum amyloid A (SAA) and soluble vascular adhesion molecule-1 (sVCAM-1),
214 using the 2400 SECTOR Imager reader (Meso Scale Discovery, Rockville, Maryland). Levels of
215 soluble cluster of differentiation 14 (sCD-14), a pro-inflammatory marker, indicating monocyte
216 activation, were measured using quantikine ELISA kits using R&D Systems (Minneapolis, MN).
217 The intra- and inter-assay coefficients of variation of those markers were <10%. The Pearson's
218 correlation coefficients between paired inflammation markers were calculated and tested as
219 additional information (Table S1).

220

221 **Urinary pesticide biomarkers**

222 *Overview*

223 Seventeen urinary biomarkers of pesticide exposure were measured, including six
224 neonicotinoid metabolites (acetamiprid [ACET], acetamiprid-N-desmethyl [AND], clothianidin
225 [CLOT], imidacloprid [IMID] and thiacloprid [THIA]), four organophosphates (2-isopropyl-4-
226 methyl-6-hydroxypyrimidine [IMPY], 3,5,6-Trichloro-2-pyridinol [TCPy], *para*-nitrophenol
227 [PNP], and malathion dicarboxylic acid [MDA]), three pyrethroid metabolites (3-
228 phenoxybenzoic acid [3-PBA], 4-fluoro-3-phenoxybenzoic acid [4F-3PBA] and trans-3-(2,2-
229 Dichlorovinyl)-2,2-dimethylcyclopropane carboxylic acid [*trans*-DCCA]), two herbicides (2,4-
230 Dichlorophenoxyacetic acid [2,4-D] and glyphosate) and two DEET metabolites (3-
231 (diethylcarbamoyl) benzoic acid [DCBA] and 3-(ethylcarbamoyl) benzoic acid [ECBA]). Urine
232 samples were shipped overnight at -20° C from UCSD to the National Center for Environmental
233 Health, Division of Laboratory Sciences of the CDC (Atlanta, GA) for quantification of all
234 organophosphates, neonicotinoids, pyrethroids, DEET and 2,4-D biomarkers, and to the
235 Laboratory for Exposure Assessment and Development in Environmental Research at Emory
236 University (Atlanta, GA) for quantification of creatinine and glyphosate. Quality control/quality
237 assurance protocols were followed to ensure data accuracy and reliability of the analytical
238 measurements. All the study samples were re-extracted if quality control failed the statistical
239 evaluation (Baker et al. 2019).

240 *Sample collection and preparation*

241 Urinary concentrations of creatinine and pesticide biomarkers were measured in samples
242 collected upon awakening. Participants brought the urine samples to the examination site in the

243 morning where they were aliquoted and frozen at -20° C. At the end of each day, samples were
244 transported to Quito for storage at -80° C. Samples were then shipped frozen overnight to UCSD
245 for long-term storage at -80° C.

246 *Urinary organophosphate, pyrethroid, and 2,4-D biomarker quantification*

247 Organophosphate and pyrethroid metabolites and 2,4-D were quantified using liquid
248 chromatography coupled with tandem mass spectrometry and isotope dilution (Davis et al. 2013;
249 Baker et al. 2019). The limit of detection (LOD) was 0.1 µg/L for TCPy, PNP, IMPy, 3-PBA,
250 and 4F-3PBA; 0.15 µg/L for 2,4-D; 0.5 µg/L for MDA; and 0.6 µg/L for *trans*-DCCA. Targeted
251 metabolites were quantified from enzymatic hydrolysis of 0.5 or 1.0 mL of urine (metabolite
252 dependent) and online solid phase extraction to release, extract and concentrate the target
253 biomarkers, followed reversed-phase high-performance liquid chromatography-tandem mass
254 spectrometry (HPLC-MS/MS) using electrospray ionization (ESI) (Davis et al. 2013; Baker et al.
255 2019). The LOD was 0.03 µg/L for THIA, 0.2 µg/L for AND and CLOT, 0.3 µg/L for ACET,
256 and 0.4 µg/L for IMID and OHIM.

257 *Urinary glyphosate quantification*

258 Urine aliquots (250 µL) were spiked with isotopically labeled glyphosate, diluted to 1 mL
259 with doubly deionized water, and extracted using a C18 solid phase extraction (SPE). Glyphosate
260 was derivatized to create its heptafluorobutyl analogue then concentrated for analysis. To
261 measure urinary glyphosate, all urine samples (aliquots) were randomized using a Fisher-Yates
262 shuffling algorithm prior to analysis to reduce potential batch effects (Fisher and Yates 1948;
263 Knuth 1960). Concentrated extracts were analyzed using gas chromatography-mass spectrometry
264 using electron impact ionization in the multiple ion monitoring mode. The LOD was 0.25 µg/L
265 with a relative standard deviation (RSD) of 3%.

266 *Urinary Neonicotinoid and DEET biomarker quantification*

267 The neonicotinoid and DEET metabolite quantification analytical method is based on
268 enzymatic hydrolysis of 0.2 mL of urine and online solid phase extraction to release, extract and
269 concentrate the target biomarkers, followed reversed-phase high-performance liquid
270 chromatography-tandem mass spectrometry (HPLC-MS/MS) using electrospray ionization (ESI).
271 Additional details have been described previously (Baker et al. 2019). The LOD for ECBA and
272 DCBA was 0.2 µg/L. The precision of the measurements, expressed as the percent RSD of

273 multiple measures of two urine-based quality control (QC) materials, was below 6%, depending
274 on the biomarker and concentration.

275 *Imputation for values below the LOD*

276 After excluding any biomarkers with a detection rate below 30%, nine were included in
277 our analysis: TCPy, PNP, MDA, 3-PBA, AND, 2,4-D, glyphosate and DCBA. We used multiple
278 imputation to estimate metabolite concentrations for individuals who had pesticide metabolite
279 concentrations below the LOD. The multiple imputation method was built as a log-logistic
280 regression model. The initial model was adjusted for: age, gender, race, BMI-for-age z-score (z-
281 BMI-for-age), monthly family income and parental education. Predicted concentrations were
282 then rescaled between 0 and the LOD and imputed for observations below the level of detection.
283 For the pesticide summary score calculation (see below) a variable that is only used to describe
284 participant characteristics across a pesticide exposure construct in Table 1, observations below
285 the LOD were imputed with a constant (LOD divided by the square root of two). This constant
286 imputation method was also applied when we create the composite variables of pesticide
287 exposure in PLS regression.

288

289 **Urinary Creatinine quantification.**

290 To account for urinary dilution, the urinary creatinine concentration was quantified using
291 HPLC-MS/MS with ESI. A 10 μ L aliquot of urine was diluted prior to analysis (Kwon et al.
292 2012). No further sample preparation was performed prior to analysis. The LOD was 5 mg/dL,
293 with an RSD of 7%.

294

295 **AChE activity and hemoglobin concentration.**

296 AChE activity and hemoglobin concentration were measured in fresh finger-stick blood
297 samples using the EQM-Test-mate ChE Cholinesterase Test System 400 during the examination
298 following recommended procedures (EQM Research Inc., Cincinnati, OH, USA). Lower
299 concentrations of AChE activity reflect greater exposure to cholinesterase inhibitor pesticides
300 (Skomal et al. 2022).

301

302 **Statistical analysis**

303

304 *Pesticide Summary Score Calculation*

305 The pesticide summary score represents the amount of pesticide exposure that a
306 participant was found to have. This score was only used in Table 1 to describe participant
307 characteristics across a single construct of urinary pesticide concentrations. The summarized
308 pesticide score was calculated using the following steps. One was added to the variable and was
309 natural-log transformed. The log-transformed concentrations were divided by the group's
310 standard deviation, and then averaged with all pesticide metabolites, a variation of a method used
311 in previous work (Suarez-Lopez et al. 2015). The metabolites that were included in the
312 summarized score were TCPy, PNP, MDA, 3-PBA, AND, DCBA, 2,4-D and glyphosate.

313 Descriptive statistics were calculated for the overall cohort, and across tertiles of the
314 summarized pesticide score. We calculated column percents for count data, and the means and
315 standard deviations (SDs) for all normally distributed continuous variables. To determine
316 whether there was a linear trend for participant characteristics across pesticide metabolite
317 concentrations, we calculated a p-value for trend (p-trend) by running a linear regression using
318 the summarized pesticide score as the independent variable, and the characteristic as the
319 dependent variable. If the $p < 0.05$, then there was a linear trend. All pesticide concentration
320 variables were naturally log-transformed because of non-normal distribution.

321
322 *Independent associations of pesticide and DEET biomarkers with inflammation markers*
323 Associations between log-transformed pesticide metabolites and inflammatory marker levels
324 were estimated using linear regression with GEE, adjusting for covariates identified a priori. The
325 covariates included were age, gender, race, BMI-for-age z-score, height-for-age z-score, parental
326 education level, urinary creatinine, smokers at home (yes/no) based on research in the literature
327 that indicates these variables may have associations with various inflammatory markers (Singer
328 et al. 2014; Artero et al. 2014; Conklin et al. 2019; Klevebro et al. 2021; Horton 2023). When the
329 independent variable was AChE, the models also adjusted for hemoglobin concentrations as the
330 AChE is the erythrocytic concentration of the enzyme. In linear models, pesticide metabolite and
331 AChE values were log-transformed and estimates of coefficients were scaled to show the
332 difference in inflammatory biomarkers given a 50% increase in the metabolites or AChE.

333 To investigate if the individual pesticide metabolites had a curvilinear association with
334 each inflammatory biomarker, we tested the significance of a quadratic term (e.g.,

335 $\ln_TCPy * \ln_TCPy$) into the regression model. Conversion per a 50% increase in metabolites, as
336 described above, was not necessary for quadratic models, as the interpretation of the coefficients
337 mostly focuses on the shape of the association. A curvilinear relationship was identified if the
338 squared term had a $p < 0.05$. To visualize the adjusted associations between individual pesticide
339 metabolites and individual inflammatory biomarkers, adjusted least squares means of
340 inflammatory biomarkers were calculated for up to 1000 ranks for each metabolite and were
341 plotted. Based on the covariate-adjusted data for the ranked variables, LOESS curves were used
342 to visualize the adjusted associations with 95% CI.

343 *Associations of pesticide and DEET biomarker mixtures with inflammation markers*

344 Given the multiple exposure variables, partial-least-squares (PLS) regression was used to
345 create a composite exposure variable. PLS was chosen instead of principal component analysis
346 (PCA) or factor analysis (FA), because it is more effective when composite variables are used as
347 independent variables in a regression analysis (Liu et al. 2022). PLS regression is similar to PCA
348 and FA in that it is a variable reduction methodology and creates a composite variable that is a
349 linear combination of the original variables. The new composite variables are orthogonal and
350 therefore uncorrelated. Unlike PCA, which orders its composite variables based on variance,
351 with the first composite variable explaining the most variance, PLS orders the composite
352 variables such that the first composite is the one that is most correlated with the outcome (Liu et
353 al. 2022). Moreover, PLS is also used in cases where the explanatory variables are collinear and
354 therefore problematic when used in a multiple linear regression, or when there are multiple
355 explanatory variables with possible additive or synergistic effects.

356 The composite variable is a linear combination of the explanatory variables, and the
357 loadings represent the direction and magnitude of the individual explanatory variables'
358 contributions to the composite variable. In our analysis, the composite variable included five
359 standardized pesticide biomarkers (glyphosate, TCPy, 2,4-D, 3-PBA and PNP), each of which
360 could contribute positively or negatively to the composite-dependent variable association. To
361 include as many participants as possible, imputation on 2,4-D and 3-PBA was considered. The
362 multiple imputation was not appropriate because it would introduce more variables which could
363 make the composite variables more complicated. Similar to the calculation of our pesticide
364 summary score, we applied the constant imputation method instead. A positive vector loading for
365 a given metabolite indicates that the metabolite is associated with the dependent variable in the

366 same direction as the composite variable, and vice versa for negative loadings. Winsorization
367 was used to reduce the effect of outliers in the outcome variables on the PLS analysis.
368 Particularly for this study, a residualization procedure was adopted as adjustment for covariates,
369 which means the outcome variable corresponding to each inflammatory biomarker was the
370 residual from a linear model fitted with the original outcome and the covariates. Negative R-
371 squared values were set to zero. Selection of which composite variables to include in the
372 regression model was based on p-value, effect size and the adjusted R-squared.

373

374 **Results**

375 *Participant Characteristics*

376 Participant characteristics for the overall cohort (n=507) stratified by tertiles of the
377 pesticide summary score can be found in Table 1. Overall, the mean age of participants was 14.5
378 years (standard deviation [SD]=1.77 years), 50% of the participants were male, and the racial
379 composition was 22% indigenous and 78% mestizo. None of the participant sociodemographic
380 characteristics differed significantly across the pesticide summary score. As expected, many of
381 the pesticide metabolites differed significantly across the pesticide summary score with the
382 exception of for MDA and AND.

383

384 *Associations between inflammatory biomarkers amongst themselves*

385 The majority of inflammatory biomarkers exhibited few correlations amongst themselves
386 (Table S 1). Levels of CRP showed significant positive associations with the levels of SAA,
387 sICAM, sVCAM and TNF- α .

388

389 *Associations between pesticide and DEET biomarkers and inflammatory biomarkers*

390 Independent linear associations were analyzed for each pesticide metabolite and the
391 inflammatory biomarkers using GEE models. No significant associations were found between
392 metabolites and the inflammation biomarkers in the linear models (Table S2).

393 Analyses assessing curvilinear (quadratic) associations between pesticide biomarkers and
394 inflammation are presented in Table 2. Notably, we found significant and consistently positive
395 curvilinear associations of 2,4-D with CRP ($\beta^2=0.13$, [0.00, 0.27]), IL-6 ($\beta^2=0.10$, [0.04, 0.15]),
396 SAA ($\beta^2=0.13$, [0.01, 0.30]), sICAM-1 ($\beta^2=53.25$, [27.26, 79.24]) and sVCAM-1 ($\beta^2=61.11$,

397 [30.52, 91.70]), where β represents percent difference in inflammatory marker concentration for
398 a 10% increase in urinary metabolite concentration (Table 2, Figure 1). Other pesticide and
399 DEET metabolites showed some evidence of curvilinear associations, although the associations
400 were not consistent. Statistically significant negative curvilinear associations were observed for
401 the associations of TCPy with CRP, DCBA with TNF- α , and glyphosate with sCD14;
402 statistically significant positive curvilinear associations were observed for the associations of
403 glyphosate with sVCAM-1 and MDA with TNF- α .

404

405 *Associations between Pesticide Metabolite Composites and Inflammatory Markers*

406 Based on the model fit analyses of the PLS components (Table 3), we only included the
407 first composite variable in our models as additional composites did not meaningfully improve the
408 adjusted R-squared value of the model compared with the first composite variable. The loadings
409 of the pesticide metabolite composite 1 are presented in the left panel of Figure 2 in bar graphs.
410 The right panel in Figure 2 depicts the linear model between the first composite variable and
411 each inflammatory biomarker.

412 Overall, there were consistent positive associations between pesticide composite 1 and
413 IL-6 ($\beta= 0.09$, [0.01, 0.17]), SAA ($\beta= 0.43$, [0.13, 0.17]), sICAM-1 ($\beta= 63.52$, [9.92, 117.13]),
414 sVCAM-1 ($\beta= 69.03$, [8.29, 129.76]) and TNF- α ($\beta= 0.08$, [0.00, 0.16]), whereas a negative
415 association was observed with CRP ($\beta= -0.28$, [-0.49, -0.08], Figure 2), where β represents an
416 increase in the inflammatory biomarker concentration for every unit increase in the composite
417 pesticide variable. Of note, the loadings of the composite variable showed consistent positive
418 associations between 2,4-D, 3-PBA and PNP and the inflammatory biomarkers under study with
419 significant associations. The only exception is for 2,4-D for the association between the
420 composite pesticide variable and CRP.

421

422 **Discussion**

423 Our investigation reveals that urinary pesticide metabolite concentrations in adolescents
424 residing in agricultural regions of Ecuador are indeed correlated with heightened levels of
425 inflammatory biomarkers in plasma, aligning with our initial hypothesis. The cumulative
426 exposure to pesticides demonstrates significant positive associations with the blood
427 concentrations of SAA, sVCAM-1, and TNF- α , while exhibiting a negative association with

428 CRP. Upon conducting individual analyses of pesticides, it became evident that quadratic
429 associations more effectively elucidate the intricate relationship between several metabolites and
430 biomarkers, indicating non-linear interdependencies.

431 In particular, concentrations of 2,4-D showed positive quadratic associations with
432 multiple inflammatory biomarkers, including CRP, IL-6, SAA, sICAM-1 and sVCAM-1. These
433 findings are consistent with in-vitro and animal studies indicating 2,4-D can act as an oxidative
434 stressor and immune-activator (Bukowska 2003; Mountassif et al. 2008; Zhou et al. 2022).
435 Proposed mechanisms of how 2,4-D might increase inflammation have been gleaned from in-
436 vitro studies in cell models. Zhou et al. have shown that 2,4-D increases radical oxygen species
437 (ROS) in cells and can directly activate the NOD-, LRR- and pyrin domain-containing protein 3
438 (NLRP3) inflammasome, which leads to caspase-1 dependent activation of the proinflammatory
439 cytokines IL-1B and IL-18 (Zhou et al. 2022). The evidence that 2,4-D is an oxidative stressor is
440 corroborated by a study by Bukowaska, which showed that 2,4-D depleted the reduced
441 glutathione stores of erythrocytes in vitro (Bukowska 2003). Oxidative stress can lead to
442 inflammatory responses, as cellular pattern recognition receptors (PRRs) detect oxidative
443 danger-associated molecular patterns (DAMPs) (Mittal et al. 2014). Redox-sensitive
444 transcription factors such as NF- κ B and AP-1 also directly upregulate inflammatory mediators
445 such as ICAM-1 in response to radical oxygen species (Mittal et al. 2014). Furthermore, IL-1B
446 and IL-18 released through inflammasome activation have both been implicated in the
447 upregulation of ICAM-1 and VCAM-1, suggesting that these cytokines mediate the recruitment
448 of leukocytes into tissues (Meager 1999; Morel et al. 2001). Chronic low-level exposure to 2,4-D
449 may therefore maintain increased oxidative stress and therefore a proinflammatory state in
450 exposed people.

451 Using PLS analysis, we also found that the composite pesticide metabolite variable was
452 positively associated with IL-6, SAA, sICAM-1, sVCAM-1 and TNF- α , and negatively
453 associated with CRP. The PLS allows us to study how independent variables that exhibit
454 collinearity explain changes in the dependent variable and how multiple exposures might
455 synergize in their effect on an outcome. Pesticides are commonly applied in mixtures versus
456 using singular chemicals, increasing the likelihood that agricultural communities will be exposed
457 to a variety of pesticide chemicals simultaneously (Hernández et al. 2013). Thus, it is expected
458 that different urinary pesticide metabolites would be correlated. The ESPINA study participants

459 reported non-engagement in agricultural activities, indicating presumptive low-dose exposure to
460 pesticides via multiple routes, including pesticide drift from nearby agricultural sites to
461 residential areas, parental "take-home" routes from occupational exposure, dietary intake, and
462 other ambient environmental sources (Curl et al. 2002; Coronado et al. 2006). A review of the
463 pesticides utilized in global floriculture identified a total of 201 distinct pesticides, with prevalent
464 classes including organophosphates, carbamates, triazoles, and pyrethroids (Pereira et al. 2021).
465 Hence, mixture modeling using PLS allows us to study interactions, synergies or potentiating
466 effects of pesticides in tandem.

467 Our findings revealed positive associations between the pesticide composite 1 with levels
468 of IL-6 and TNF- α , which are used as general markers of inflammation. IL-6 and TNF- α are
469 principal cytokines with pleiotropic functions that regulate inflammatory state and several key
470 physiologic processes (Kallioliias and Ivashkiv 2016). The immune roles of the IL-6 and soluble
471 IL-6 receptor (sIL-6R) complex include the progression from acute to chronic inflammatory
472 states and the engagement of the adaptive immune system following innate response. TNF- α 's
473 pro-inflammatory functions include upregulating selectins, CAMs, and pro-inflammatory NF-KB
474 (Zelová and Hošek 2013). Animal and in vitro studies have found that perinatal exposure to
475 glyphosate increased the levels of IL-6 and TNF- α in rat livers and upregulated IL-6 and TNF- α
476 mRNA and protein expression (Bai et al. 2022; Rieg et al. 2022). Furthermore, the mRNA and
477 protein expression of both IL-6 and TNF- α are broadly upregulated with various classes of
478 pesticides, including neonicotinoids, pyrethroids, organophosphates, and herbicides (Mense et al.
479 2006; Agrawal et al. 2015a; Hossain et al. 2017; Pandey et al. 2019; Miao et al. 2022; Deng et al.
480 2022).

481 Our results revealed associations between pesticide exposure with soluble levels of
482 multiple vascular inflammatory markers, namely cellular adhesion molecules (CAMs) and the
483 acute phase reactant SAA, both of which are also regulated by IL-6 and TNF- α . The
484 aforementioned IL-6 and sIL-6R complex facilitates the expression of cellular adhesion
485 molecules (CAMs) on endothelial cells and is involved in T-cell differentiation (Scheller et al.
486 2011). CAMs allow for the extravasation of monocytes and lymphocytes into tissues and are
487 therefore key inflammatory molecules. High levels of CAMs are involved in the pathogenesis of
488 debilitating diseases such as atherosclerosis (Yin et al. 2021). Like CAMs, SAA may play a role
489 in the development of atherosclerosis by promoting increased release of vascular proteoglycans,

490 which bind to and retain lipids in the endothelial wall through ionic interactions (Wilson et al.
491 2008; Thompson et al. 2015). Notably, the herbicides 2,4-D (primarily) and glyphosate had
492 consistent positive quadratic associations with sVCAM-1 and/or sICAM-1, evincing a potential
493 role of herbicides in promoting the underlying pathophysiological processes by which
494 atherosclerosis and neuroinflammation might occur. Epidemiological evidence from other
495 studies has demonstrated that pesticide exposure is a risk factor for atherosclerosis. One cross-
496 sectional study of 447 middle-aged and older participants in a rural area of Korea revealed a
497 significantly greater atherosclerotic risk associated with reported pesticide exposure (Park et al.
498 2020). Another epidemiological study reported a positive association between cardiovascular
499 disease incidence and self-reported pesticide exposure in 7,557 middle-aged Japanese American
500 men living in Hawaii (Berg et al. 2019). Together, our findings indicate that the associations
501 between pesticide exposure and general and vascular inflammation may underlie inflammatory
502 disease outcomes reported among individuals with chronic pesticide exposure.

503 The observed negative associations between pesticide exposure and CRP concentrations
504 are intriguing but unexplained, especially considering the positive correlations noted between
505 CRP concentrations and other measured inflammation markers. Given that CRP exists in two
506 isoforms with potentially opposing roles such that a soluble pentameric form found in circulating
507 blood may be involved in the resolution of inflammation compared to a monomeric form which
508 is localized in inflamed tissues (Del Giudice and Gangestad 2018), our observation may reflect a
509 complex phenomenon. Nonetheless, the participants in this study were children and adolescents
510 with no known inflammatory conditions, in whom the levels of CRP are generally low and its
511 implications for health outcomes are not well established other than small to modest associations
512 with some demographic factors and adiposity (Cook et al. 2000; Caballero et al. 2008; Nappo et
513 al. 2013). Investigations of CRP levels in children remain scarce besides a few studies of CRP as
514 a clinical test for acute infections (Staiano et al. 2023) or inflammatory conditions (Enocsson et
515 al. 2021), and its baseline levels in children in the absence of inflammatory diseases or infections
516 are often low which is also shown in our study participants (i.e., mean 1.4 $\mu\text{g/mL}$) (Schlenz et al.
517 2014). Thus, it is premature to speculate on the health or mechanistic implications of this finding.

518 Understanding the associations between urinary metabolites and inflammatory
519 biomarkers is important in this population given that they have a higher exposure to pesticides.
520 Creatinine-corrected pesticide metabolite concentrations ($\mu\text{g/L}$) in the ESPINA cohort were

521 compared to creatinine-corrected concentrations reported by the National Health and Nutrition
522 Examination Survey (NHANES). The geometric means of urinary metabolite concentrations
523 from the 2015–2016 NHANES 12–19-year-old study participants were referenced (National
524 Health and Nutrition Examination Survey 2016). Geometric means of the creatinine-corrected
525 urinary metabolite concentrations for the ESPINA cohort were calculated and compared to
526 geometric means of the 2015–2016 NHANES cohort. DEET metabolite concentrations were
527 higher in the NHANES population (Table S 2). However, all the neonicotinoid concentrations
528 and three of the four organophosphate metabolites were higher in the ESPINA participants.
529 Overall, the ESPINA population had higher concentrations of neonicotinoid and
530 organophosphate metabolites in their urine as compared to the participants in the United States
531 NHANES study (AND 0.31 vs 0.18; CLOT 0.17 vs 0.12; IMID 0.34 vs 0.23; 5-Hydroxy
532 imidacloprid 0.48 vs 0.28; 3,5,6-Trichloro-2-pyridinol 3.07 vs 0.92; MDA 3.07 vs 0.92; 2-
533 isopropyl-4-methyl-6-hydroxypy 0.11 vs 0.07). However, there were lower levels of DCBA,
534 ECBA and acetamiprid metabolites, and the same levels of PNP and 2,4-D when comparing
535 ESPINA participants to those in the NHANES study (DCBA 0.63 vs 4.42; ECBA 0.36 vs 1.77).

536 Our study stands out due to its comprehensive examination of a diverse panel of
537 pesticides, including insecticides, herbicides, and insect repellents, exploring both their
538 individual effects and their combined associations with markers of overall and vascular
539 inflammation. Additionally, our investigation focuses on adolescents, a demographic lacking
540 sufficient evidence in similar studies, particularly those residing in rural areas of Ecuador, which
541 are often underrepresented in research endeavors. Another strength of this study is the use of
542 PLS regression analysis, which allows for the integration of the synergistic effects of multiple
543 pesticides on inflammation. The PLS analyses also allow us to investigate the relationships
544 between collinear pesticide metabolites with the inflammatory biomarker outcomes. Finally, the
545 analysis in our study also does not rely on reported pesticide exposure but rather uses urinary
546 pesticide metabolites to measure the level of exposure quantitatively.

547 A limitation of this study lies in the exclusive examination of circulating inflammatory
548 biomarkers, which may not fully reflect tissue- and organ-specific inflammatory alterations.
549 Furthermore, the cross-sectional nature of our analyses precludes definitive determination of
550 causality and, in theory, the directionality of the association (do urinary pesticide concentrations
551 influence inflammation markers? Or do inflammation markers influence urinary pesticide

552 concentrations?). We are unaware of mechanisms for how circulating inflammatory markers
553 could influence urinary pesticide concentrations, although this is theoretically possible if
554 pesticide metabolism and excretion processes are modified by circulating inflammatory markers.
555 However, although it seems more likely that pesticides may influence the concentrations of
556 inflammatory markers as observed in the experimental studies described in this manuscript, it is
557 plausible that inflammatory markers may modulate the metabolism and excretion of pesticides.
558 This topic needs further evaluation. Future studies of inflammatory-disease incidence in subjects
559 chronically exposed to pesticides could help reveal any clinical manifestations of changes in
560 inflammation status secondary to pesticide exposure. More prospective studies examining how
561 inflammation status changes in response to low-grade chronic exposure to pesticides could help
562 reveal more about the nature of physiological responses to agrochemicals.

563

564 **Conclusion**

565 We found that overall pesticide exposure, estimated using a pesticide composite variable
566 of urinary pesticide metabolites, was positively associated with IL-6, SAA, sICAM-1, sVCAM-1
567 and TNF- α , and negatively with CRP. Our findings also indicate that some of these associations
568 are likely non-linear in nature, indicated by the consistent curvilinear associations of the
569 herbicide 2,4-D with CRP, IL-6, SAA, sICAM-1 and sVCAM-1. These results agree with
570 existing in vitro and animal studies that describe the proinflammatory nature of pesticides in
571 tissue culture and animal models. Our study is one of the first to assess the associations between
572 pesticide exposure, measured using urinary pesticide metabolites, and serum inflammation
573 markers in adolescents and children. Our results suggest that exposure to pesticides at levels
574 lower than those that can cause acute toxicity may alter the inflammatory state in the human
575 body, which may be a mechanism by which pesticide exposure leads to detrimental health
576 effects. Given the potential role of pesticides in inflammation, attention should be given to the
577 incidence and prevalence of inflammatory diseases in affected populations. Given the cross-
578 sectional design of this study, replication through longitudinal analysis would offer a more
579 comprehensive understanding of the causal pathway linking pesticide exposure to inflammation.
580 These findings underscore the imperative to reassess the widespread use of pesticides in
581 agriculture, emphasizing the importance of adopting sustainable and health-conscious
582 approaches to agricultural practices.

583 **Acknowledgments**

584 We especially thank all the participants who participated in the present study. We thank
585 the ESPINA study staff, Fundación Cimas del Ecuador, the Parish Governments of Pedro Moncayo
586 County, the community members of Pedro Moncayo and the Education District of Pichincha-
587 Cayambe-Pedro Moncayo counties for their contributions to and support of this project. The
588 coauthors extend thanks to Dolores Lopez Paredes for her contributions to this research.

589

590 **Funding Sources**

591 The research reported in this publication was supported by the National Institute of
592 Environmental Health Sciences of the National Institutes of Health under Award Numbers
593 R01ES025792, R01ES030378, R21ES026084, and U2CES026560.

594

595 **Competing Interests**

596 The authors have no relevant financial or non-financial interests to disclose.

597

598 **Author Contributions**

599 Conceptualization, Funding, & Methodology: **SH, JST & JRS** – Fieldwork, Data
600 Collection & Management: **DM, BNC, JST & JRS** – Data Analysis & Interpretation: **KY, XT,**
601 **JRS & SH** – Original Draft Preparation: **MNH** – Literature Review, Manuscript Writing –
602 Review & Editing: **MNH, BNC, XT, RPP, JST, DB, SH & JRS.**

603 All the coauthors read and approved the final manuscript.

604

605 **Consent to participate and Ethics.**

606 Informed consent, parental authorization of child participation and assent of child
607 participants older than 7 years of age were obtained. For the 2016 examination of the ESPINA
608 study, we obtained approval from the Institutional Review Boards of Boards of the University of
609 California San Diego (UCSD), Universidad San Francisco de Quito and Ecuador's Ministry of
610 Public Health in 2016.

611

612

613

614 **References**

- 615 Agrawal S, Dixit A, Singh A, et al (2015a) Cyclosporine A and MnTMPyP alleviate α -synuclein
616 expression and aggregation in cypermethrin-induced Parkinsonism. *Molecular neurobiology*
617 52:1619–1628
- 618 Agrawal S, Singh A, Tripathi P, et al (2015b) Cypermethrin-Induced Nigrostriatal Dopaminergic
619 Neurodegeneration Alters the Mitochondrial Function: A Proteomics Study. *Molecular*
620 *Neurobiology* 51:448–465. <https://doi.org/10.1007/s12035-014-8696-7>
- 621 Armando M, P. SD, E. BFL, et al (2024) Pesticide Exposure and Risk of Rheumatoid Arthritis
622 among Licensed Male Pesticide Applicators in the Agricultural Health Study. *Environmental*
623 *Health Perspectives* 125:77010. <https://doi.org/10.1289/EHP1013>
- 624 Bai G, Zhou R, Jiang X, et al (2022) Glyphosate-based herbicides induces autophagy in IPEC-J2
625 cells and the intervention of N-acetylcysteine. *Environmental toxicology* 37:1878–1890.
626 <https://doi.org/10.1002/tox.23534>
- 627 Baker SE, Serafim AB, Morales-Agudelo P, et al (2019) Quantification of DEET and
628 neonicotinoid pesticide biomarkers in human urine by online solid-phase extraction high-
629 performance liquid chromatography-tandem mass spectrometry. *Analytical and Bioanalytical*
630 *Chemistry* 411:3
- 631 Baltazar MT, Dinis-Oliveira RJ, de Lourdes Bastos M, et al (2014) Pesticides exposure as
632 etiological factors of Parkinson's disease and other neurodegenerative diseases--a
633 mechanistic approach. *Toxicology letters* 230:85–103.
634 <https://doi.org/10.1016/j.toxlet.2014.01.039>
- 635 Berg ZK, Rodriguez B, Davis J, et al (2019) Association between occupational exposure to
636 pesticides and cardiovascular disease incidence: The Kuakini Honolulu Heart Program.
637 *Journal of the American Heart Association* 8: e012569
- 638 Bukowska B (2003) Effects of 2,4-D and its metabolite 2,4-dichlorophenol on antioxidant
639 enzymes and level of glutathione in human erythrocytes. *Comparative biochemistry and*
640 *physiology Toxicology & pharmacology: CBP* 135:435–441. [https://doi.org/10.1016/s1532-0456\(03\)00151-0](https://doi.org/10.1016/s1532-0456(03)00151-0)
- 642 Clinical and Laboratory Standards Institute (2007) Procedures for the Collection of Diagnostic
643 Blood Specimens by Venipuncture: Approved Standard, Sixth. Clinical and Laboratory
644 Standards Institute
- 645 Cook DG, Mendall MA, Whincup PH, et al (2000) C-reactive protein concentration in children:
646 relationship to adiposity and other cardiovascular risk factors. *Atherosclerosis* 149:139–150.
647 [https://doi.org/10.1016/S0021-9150\(99\)00312-3](https://doi.org/10.1016/S0021-9150(99)00312-3)
- 648 Cooper GS, Parks CG, Treadwell EL, et al (2004) Occupational risk factors for the development
649 of systemic lupus erythematosus. *The Journal of rheumatology* 31:1928–1933
- 650 Corbel V, Stankiewicz M, Penner C, et al (2009) Evidence for inhibition of cholinesterases in
651 insect and mammalian nervous systems by the insect repellent deet. 7:
652 <https://doi.org/10.1186/1741-7007-7-47>
- 653 Coronado GD, Vigoren EM, Thompson B, et al (2006) Organophosphate pesticide exposure and
654 work in pome fruit: evidence for the take-home pesticide pathway. *Environmental health*
655 *perspectives* 114:999–1006. <https://doi.org/10.1289/ehp.8620>
- 656 Costa C, Rapisarda V, Catania S, et al (2013) Cytokine patterns in greenhouse workers
657 occupationally exposed to α -cypermethrin: An observational study. *Environmental*
658 *Toxicology and Pharmacology* 36:796–800. <https://doi.org/10.1016/j.etap.2013.07.004>

- 659 Curl CL, Fenske RA, Kissel JC, et al (2002) Evaluation of take-home organophosphorus
660 pesticide exposure among agricultural workers and their children. *Environmental Health*
661 *Perspectives* 110:12
- 662 da Silva CE, Gahagan S, Suarez-Torres J, et al (2022a) Time after a peak-pesticide use period
663 and neurobehavior among ecuadorian children and adolescents: The ESPINA study.
664 *Environmental research* 204:112325. <https://doi.org/10.1016/J.ENVRES.2021.112325>
- 665 da Silva JC, Scandolaro TB, Kern R, et al (2022b) Occupational exposure to pesticides affects
666 pivotal immunologic anti-tumor responses in breast cancer women from the intermediate risk
667 of recurrence and death. *Cancers* 14:5199
- 668 Davis MD, Wade EL, Restrepo PR, et al (2013) Semi-automated solid phase extraction method
669 for the mass spectrometric quantification of 12 specific metabolites of organophosphorus
670 pesticides, synthetic pyrethroids, and select herbicides in human urine. *Journal of*
671 *Chromatography B* 929:18
- 672 de Souza A, Medeiros ADR, de Souza AC, et al (2011) [Evaluation of the impact of exposure to
673 pesticides on the health of the rural population: Vale do Taquari, State of Rio Grande do Sul
674 (Brazil)]. *Ciencia & saude coletiva* 16:3519–3528. [https://doi.org/10.1590/s1413-](https://doi.org/10.1590/s1413-81232011000900020)
675 [81232011000900020](https://doi.org/10.1590/s1413-81232011000900020)
- 676 Del Giudice M, Gangestad SW (2018) Rethinking IL-6 and CRP: Why they are more than
677 inflammatory biomarkers, and why it matters. *Brain, behavior, and immunity* 70:61–75
- 678 Deng N, Lv Y, Bing Q, et al (2022) Inhibition of the Nrf2 signaling pathway involved in
679 imidacloprid-induced liver fibrosis in *Coturnix japonica*. *Environmental toxicology* 37:2354–
680 2365. <https://doi.org/10.1002/tox.23601>
- 681 El-Gameel D, Hamdy NA, El-Yazbi AF, et al (2023) Chronic Exposure to Organophosphate
682 Pesticides and Elevated Markers of Systemic Inflammation: Possible Neuroinflammatory and
683 Genotoxic Effects
- 684 Fenga C, Gangemi S, Catania S, et al (2014) IL-17 and IL-22 serum levels in greenhouse
685 workers exposed to pesticides. *Inflammation Research* 63:895–897.
686 <https://doi.org/10.1007/s00011-014-0769-6>
- 687 Furman D, Campisi J, Verdin E, et al (2019) Chronic inflammation in the etiology of disease
688 across the life span. *Nature medicine* 25:1822–1832. [https://doi.org/10.1038/s41591-019-](https://doi.org/10.1038/s41591-019-0675-0)
689 [0675-0](https://doi.org/10.1038/s41591-019-0675-0)
- 690 Godínez-Pérez BM, Schilman A, Lagunas-Martínez A, et al (2024) Pesticide use patterns and
691 their association with cytokine levels in Mexican flower workers. *International Archives of*
692 *Occupational and Environmental Health* 1–12
- 693 Hayes TB, Hansen M (2017) From silent spring to silent night: Agrochemicals and the
694 anthropocene. *Elementa: Science of the Anthropocene* 5:57.
695 <https://doi.org/10.1525/elementa.246>
- 696 Henderson RF, Barr EB, Blackwell WB, et al (2002) Response of rats to low levels of sarin.
697 *Toxicology and applied pharmacology* 184:67–76
- 698 Hernández AF, Parrón T, Tsatsakis AM, et al (2013) Toxic effects of pesticide mixtures at a
699 molecular level: their relevance to human health. *Toxicology* 307:136–145
- 700 Hossain MM, Liu J, Richardson JR (2017) Pyrethroid Insecticides Directly Activate Microglia
701 Through Interaction with Voltage-Gated Sodium Channels. *Toxicological Sciences* 155:112–
702 123. <https://doi.org/10.1093/toxsci/kfw187>
- 703 Huang M, Barges-Carot A, Riaz Z, et al (2022) Impact of Environmental Risk Factors on
704 Mitochondrial Dysfunction, Neuroinflammation, Protein Misfolding, and Oxidative Stress in

- 705 the Etiopathogenesis of Parkinson's Disease. *International journal of molecular sciences* 23:
706 <https://doi.org/10.3390/ijms231810808>
- 707 Jacobsen-Pereira CH, Cardoso CC, Gehlen TC, et al (2020) Immune response of Brazilian
708 farmers exposed to multiple pesticides. *Ecotoxicology and Environmental Safety*
709 202:110912. <https://doi.org/10.1016/j.ecoenv.2020.110912>
- 710 Kalliolias GD, Ivashkiv LB (2016) TNF biology, pathogenic mechanisms and emerging
711 therapeutic strategies. *Nature Reviews Rheumatology* 12:49–62.
712 <https://doi.org/10.1038/nrrheum.2015.169>
- 713 Koutros S, Silverman DT, Alavanja MC, et al (2016) Occupational exposure to pesticides and
714 bladder cancer risk. *International journal of epidemiology* 45:792–805.
715 <https://doi.org/10.1093/ije/dyv195>
- 716 Kumar S, Khodoun M, Kettleson EM, et al (2014) Glyphosate-rich air samples induce IL-33,
717 TSLP and generate IL-13 dependent airway inflammation. *Toxicology* 325:42–51.
718 <https://doi.org/10.1016/j.tox.2014.08.008>
- 719 Kwon W, Kim JY, Suh S, In MK (2012) Simultaneous determination of creatinine and uric acid
720 in urine by liquid chromatography-tandem mass spectrometry with polarity switching
721 electrospray ionization. *Forensic science international* 221:1–3
- 722 Meager A (1999) Cytokine regulation of cellular adhesion molecule expression in inflammation.
723 *Cytokine & growth factor reviews* 10:27–39. [https://doi.org/10.1016/s1359-6101\(98\)00024-0](https://doi.org/10.1016/s1359-6101(98)00024-0)
- 724 Mense SM, Sengupta A, Lan C, et al (2006) The common insecticides cyfluthrin and
725 chlorpyrifos alter the expression of a subset of genes with diverse functions in primary
726 human astrocytes. *Toxicological sciences: an official journal of the Society of Toxicology*
727 93:125–135. <https://doi.org/10.1093/toxsci/kfl046>
- 728 Miao Z, Miao Z, Wang S, et al (2022) Exposure to imidacloprid induce oxidative stress,
729 mitochondrial dysfunction, inflammation, apoptosis and mitophagy via NF-kappaB/JNK
730 pathway in grass carp hepatocytes. *Fish & Shellfish Immunology* 120:674–685.
731 <https://doi.org/10.1016/J.FSI.2021.12.017>
- 732 Mittal M, Siddiqui MR, Tran K, et al (2014) Reactive oxygen species in inflammation and tissue
733 injury. *Antioxidants & redox signaling* 20:1126–1167. <https://doi.org/10.1089/ars.2012.5149>
- 734 Mokarizadeh A, Faryabi MR, Rezvanfar MA, Abdollahi M (2015) A comprehensive review of
735 pesticides and the immune dysregulation: mechanisms, evidence and consequences.
736 *Toxicology Mechanisms and Methods* 25:258–278.
737 <https://doi.org/10.3109/15376516.2015.1020182>
- 738 Morel JC, Park CC, Woods JM, Koch AE (2001) A novel role for interleukin-18 in adhesion
739 molecule induction through NF kappa B and phosphatidylinositol (PI) 3-kinase-dependent
740 signal transduction pathways. *The Journal of biological chemistry* 276:37069–37075.
741 <https://doi.org/10.1074/jbc.M103574200>
- 742 Mountassif D, Kabine M, Karima Mounchid, et al (2008) Biochemical and histological
743 alterations of cellular metabolism from jerboa (*Jaculus orientalis*) by 2,4-
744 dichlorophenoxyacetic acid: Effects on d-3-hydroxybutyrate dehydrogenase. *Pesticide*
745 *Biochemistry and Physiology* 90:87–96. <https://doi.org/10.1016/j.pestbp.2007.08.001>
- 746 Mwangi H, Dalvie M, Singh T, et al (2016) Relationship between Pesticide Metabolites,
747 Cytokine Patterns, and Asthma-Related Outcomes in Rural Women Workers. *International*
748 *Journal of Environmental Research and Public Health* 13:957.
749 <https://doi.org/10.3390/ijerph13100957>

- 750 National Health and Nutrition Examination Survey (2016) 2015-2016 Laboratory Data -
751 Continuous NHANES
- 752 Pandey A, Dhabade P, Kumarasamy A (2019) Inflammatory Effects of Subacute Exposure of
753 Roundup in Rat Liver and Adipose Tissue. Dose-response: a publication of International
754 Hormesis Society 17:1559325819843380. <https://doi.org/10.1177/1559325819843380>
- 755 Park S, Choi JR, Kim S-K, et al (2020) Increased risk of atherosclerosis associated with pesticide
756 exposure in rural areas in Korea. *PloS one* 15: e0232531
- 757 Patel V, Saxena S, Lund C, et al (2018) The Lancet Commission on global mental health and
758 sustainable development. *The Lancet* 392:1553–1598. [https://doi.org/10.1016/S0140-](https://doi.org/10.1016/S0140-6736(18)31612-X)
759 [6736\(18\)31612-X](https://doi.org/10.1016/S0140-6736(18)31612-X)
- 760 Pereira PCG, Parente CET, Carvalho GO, et al (2021) A review on pesticides in flower
761 production: A push to reduce human exposure and environmental contamination.
762 *Environmental Pollution* 289:117817. <https://doi.org/10.1016/j.envpol.2021.117817>
- 763 Priyadarshi A, Khuder SA, Schaub EA, Priyadarshi SS (2001) Environmental risk factors and
764 Parkinson's disease: a metaanalysis. *Environmental research* 86:122–127
- 765 Proskocil BJ, Grodzki ACG, Jacoby DB, et al (2019) Organophosphorus Pesticides Induce
766 Cytokine Release from Differentiated Human THP1 Cells. *American journal of respiratory*
767 *cell and molecular biology* 61:620–630. <https://doi.org/10.1165/rcmb.2018-0257OC>
- 768 Qi L, Dong Y-M, Chao H, et al (2023) Glyphosate based-herbicide disrupts energy metabolism
769 and activates inflammatory response through oxidative stress in mice liver. *Chemosphere*
770 315:137751. <https://doi.org/10.1016/j.chemosphere.2023.137751>
- 771 Rieg CEH, Cattani D, Napolini NF, et al (2022) Perinatal exposure to a glyphosate pesticide
772 formulation induces offspring liver damage. *Toxicology and applied pharmacology*
773 454:116245. <https://doi.org/10.1016/j.taap.2022.116245>
- 774 Schäfer M, Koppe F, Stenger B, et al (2013) Influence of organophosphate poisoning on human
775 dendritic cells. *Chemico-biological interactions* 206:472–478
- 776 Scheller J, Chalaris A, Schmidt-Arras D, Rose-John S (2011) The pro- and anti-inflammatory
777 properties of the cytokine interleukin-6. *Biochimica et Biophysica Acta (BBA) - Molecular*
778 *Cell Research* 1813:878–888. <https://doi.org/10.1016/j.bbamcr.2011.01.034>
- 779 Singh A, Tripathi P, Prakash O, Singh MP (2016) Ibuprofen abates cypermethrin-induced
780 expression of pro-inflammatory mediators and mitogen-activated protein kinases and averts
781 the nigrostriatal dopaminergic neurodegeneration. *Molecular Neurobiology* 53:6849–6858.
782 <https://doi.org/10.1007/s12035-015-9577-4>
- 783 Skomal AE, Zhang J, Yang K, et al (2022) Concurrent urinary organophosphate metabolites and
784 acetylcholinesterase activity in Ecuadorian adolescents. *Environmental research* 207:3
- 785 Suarez-Lopez JR, Lee D-H, Porta M, et al (2015) Persistent organic pollutants in young adults
786 and changes in glucose related metabolism over a 23-year follow-up. *Environmental research*
787 137:485–494. <https://doi.org/10.1016/j.envres.2014.11.001>
- 788 Suarez-Lopez JR, Nazeeh N, Kayser G, et al (2020) Residential proximity to greenhouse crops
789 and pesticide exposure (via acetylcholinesterase activity) assessed from childhood through
790 adolescence. *Environmental Research* 188:109728.
791 <https://doi.org/10.1016/j.envres.2020.109728>
- 792 Suárez-López JR, Nazeeh N, Kayser G, et al (2020) Residential proximity to greenhouse crops
793 and pesticide exposure (via acetylcholinesterase activity) assessed from childhood through
794 adolescence. *Environmental Research* 109728. <https://doi.org/10.1016/j.envres.2020.109728>

- 795 Suárez-Torres J, Suárez-López JR, López-Paredes D, et al (2017) Agroecology and Health:
796 Lessons from Indigenous Populations. *Current Environmental Health Reports* 4:.
797 <https://doi.org/10.1007/s40572-017-0146-z>
- 798 Tansey MG, Wallings RL, Houser MC, et al (2022) Inflammation and immune dysfunction in
799 Parkinson disease. *Nature Reviews Immunology* 22:657–673.
800 <https://doi.org/10.1038/s41577-022-00684-6>
- 801 Thompson JC, Jayne C, Thompson J, et al (2015) A brief elevation of serum amyloid A is
802 sufficient to increase atherosclerosis. *Journal of lipid research* 56:286–293.
803 <https://doi.org/10.1194/jlr.M054015>
- 804 Wilson PG, Thompson JC, Webb NR, et al (2008) Serum amyloid A, but not C-reactive protein,
805 stimulates vascular proteoglycan synthesis in a pro-atherogenic manner. *The American*
806 *journal of pathology* 173:1902–1910. <https://doi.org/10.2353/ajpath.2008.080201>
- 807 World Health Organization (2006) WHO child growth standards: length/height-for-age, weight-
808 for-age, weight-for-length, weight-for-height and body mass index-for-age: methods and
809 development. In: WHO. <https://www.who.int/publications/i/item/924154693X>. Accessed 1
810 Feb 2024
- 811 Yin M, Li C, jiang J, et al (2021) Cell adhesion molecule-mediated therapeutic strategies in
812 atherosclerosis: From a biological basis and molecular mechanism to drug delivery
813 nanosystems. *Biochemical Pharmacology* 186:114471.
814 <https://doi.org/10.1016/j.bcp.2021.114471>
- 815 Zelová H, Hošek J (2013) TNF- α signalling and inflammation: interactions between old
816 acquaintances. *Inflammation Research* 62:641–651. <https://doi.org/10.1007/s00011-013-0633-0>
- 817
818 Zhou J, Wang F, Jia L, et al (2022) 2,4-dichlorophenoxyacetic acid induces ROS activation in
819 NLRP3 inflammatory body-induced autophagy disorder in microglia and the protective effect
820 of Lycium barbarum polysaccharide. *Environmental toxicology* 37:1136–1151.
821 <https://doi.org/10.1002/tox.23471>
822
823

Table 1. Characteristics of study participants

	Tertile of Pesticide Summary Score				p-trend
	All	T1	T2	T3	
N	507	168	167	168	
Range		0.28, 1.26	1.27, 1.77	1.78, 5.02	
Age (years)	14.5 ± 1.77	14.4 ± 1.75	14.4 ± 1.78	14.6 ± 1.77	<i>p</i> =0.548
Gender					
Male (%)	50%	52%	55%	44%	<i>p</i> =0.158
Female (%)	50%	48%	45%	56%	
Race					
Indigenous (%)	22%	27%	21%	19%	<i>p</i> =0.106 ^c
Mestizo (%)	78%	73%	79%	81%	
BMI-for-age Z-score (SD)	0.384 ± 0.835	0.448 ± 0.753	0.364 ± 0.860	0.341 ± 0.888	<i>p</i> =0.453
Family's Monthly Income (USD)	500 (350)	460 (335)	500 (325)	600 (374)	<i>p</i> =0.334
Average Parental Education (years)	7.00 (4.50)	7.00 (4.50)	7.00 (3.50)	7.50 (4.50)	<i>p</i> =0.316
Presence of Smokers at Home					
No	77%	81%	78%	72%	<i>p</i> =0.080
Yes	23%	19%	22%	28%	
TCPy (ug/L)	2.69 (2.89)	1.44 (1.13)	2.78 (2.55)	4.39 (3.97)	<i>p</i> <0.001
PNP (ug/L)	0.505 (0.371)	0.350 (0.194)	0.512 (0.268)	0.817 (0.626)	<i>p</i> <0.001
MDA (ug/L)	0.819 (0.188)	0.771 (0.139)	0.813 (0.134)	0.876 (0.213)	<i>p</i> =0.107
DCBA (ug/L)	0.769 (2.54)	0.540 (0.751)	0.798 (3.54)	0.833 (4.46)	<i>p</i> =0.694
3-PBA (ug/L)	0.428 (0.504)	0.258 (0.172)	0.407 (0.317)	0.822 (1.12)	<i>p</i> <0.001
AND (ug/L)	0.573 (0.766)	0.521 (0.429)	0.573 (0.867)	0.588 (1.00)	<i>p</i> =0.069
2,4-D (ug/L)	0.303 (0.266)	0.213 (0.106)	0.266 (0.192)	0.423 (0.352)	<i>p</i> <0.001
Glyphosate (ug/L)	0.870 (1.38)	0.390 (0.516)	0.898 (1.08)	1.85 (2.41)	<i>p</i> <0.001
AChE (U/mL)	3.70 ± 0.553	3.69 ± 0.573	3.72 ± 0.520	3.71 ± 0.568	<i>p</i> =0.635
sCD14 (ng/mL)	1590 ± 392	1620 ± 384	1570 ± 384	1580 ± 408	<i>p</i> =0.617
CRP (μg/mL)	1.39 ± 1.66	1.48 ± 1.66	1.37 ± 1.70	1.33 ± 1.61	<i>p</i> =0.427
IL-6 (pg/mL)	1.18 ± 0.684	1.15 ± 0.610	1.18 ± 0.714	1.20 ± 0.725	<i>p</i> =0.084
SAA (μg/mL)	2.01 ± 2.05	2.06 ± 1.99	1.88 ± 1.99	2.10 ± 2.17	<i>p</i> =0.500
sICAM-1 (ng/mL)	755 ± 467	752 ± 431	723 ± 483	788 ± 484	<i>p</i> =0.157
sVCAM-1 (ng/mL)	975 ± 548	966 ± 510	924 ± 554	1030 ± 577	<i>p</i> =0.031
TNF-α (pg/mL)	2.11 ± 0.609	2.13 ± 0.590	2.07 ± 0.498	2.13 ± 0.719	<i>p</i> =0.663

824

825 Values displayed mean ± standard deviation, percent or median and interquartile range (IQR).

826

827 Participant demographics did not differ significantly across summarized pesticide score tertile.

828 2,4-D= 2,4-Dichlorophenoxyacetic acid; AChE=acetylcholinesterase; AND=acetamiprid-N-desmethyl; TCPy= 3,5,6-

829 Trichloro-2-pyridinol; DCBA=3-(diethylcarbamoyl) benzoic acid; MDA= Malathion dicarboxylic acid; 3-PBA=3-

830 phenoxybenzoic acid; PNP= para-Nitrophenol.

831

832

Table 2. Independent quadratic associations between biomarkers of pesticide exposure and inflammation N= 507

Exposure Biomarkers	Inflammatory Biomarkers							
	CRP (ug/ml)		IL-6 (pg/ml)		SAA (ug/ml)		TNF- α (pg/ml)	
	β (95% CI)	β^2 (95% CI)	β (95% CI)	β^2 (95% CI)	β (95% CI)	β^2 (95% CI)	β (95% CI)	β^2 (95% CI)
2,4-D (ug/L)	0.14 [-0.09, 0.37]	0.13 [0.00, 0.27]	0.08 [-0.02, 0.18]	0.10 [0.04, 0.15]	0.21 [-0.08, 0.50]	0.16 [0.01, 0.30]	0.05 [-0.04, 0.14]	0.00 [-0.03, 0.04]
Glyphosate (ug/L)	-0.05 [-0.20, 0.10]	0.01 [-0.02, 0.05]	0.02 [-0.05, 0.10]	0.00 [-0.01, 0.02]	0.01 [-0.20, 0.21]	0.02 [-0.02, 0.05]	0.03 [-0.02, 0.09]	0.00 [-0.01, 0.01]
AND (ug/L)	0.04 [-0.21, 0.30]	-0.07 [-0.24, 0.11]	0.06 [-0.04, 0.16]	-0.03 [-0.09, 0.04]	-0.08 [-0.41, 0.26]	-0.03 [-0.24, 0.18]	-0.11 [-0.19, -0.04]	-0.01 [-0.08, 0.06]
TCPy (ug/L)	0.19 [-0.11, 0.49]	-0.15 [-0.25, -0.04]	0.01 [-0.14, 0.16]	-0.01 [-0.07, 0.04]	-0.17 [-0.60, 0.26]	0.04 [-0.15, 0.22]	0.04 [-0.07, 0.15]	-0.03 [-0.07, 0.02]
3-PBA (ug/L)	-0.09 [-0.28, 0.10]	0.02 [-0.10, 0.13]	0.06 [-0.04, 0.16]	0.02 [-0.03, 0.07]	0.18 [-0.12, 0.49]	0.11 [-0.08, 0.30]	0.02 [-0.04, 0.08]	0.01 [-0.03, 0.05]
MDA (ug/L)	0.27 [-0.51, 1.05]	-0.28 [-0.62, 0.05]	-0.22 [-0.46, 0.02]	0.06 [-0.05, 0.17]	-0.45 [-1.27, 0.36]	0.01 [-0.34, 0.37]	-0.37 [-0.66, -0.07]	0.15 [0.02, 0.28]
PNP (ug/L)	-0.08 [-0.56, 0.39]	-0.10 [-0.37, 0.18]	-0.06 [-0.23, 0.12]	-0.03 [-0.15, 0.09]	-0.18 [-0.75, 0.40]	-0.06 [-0.40, 0.27]	0.04 [-0.10, 0.19]	-0.03 [-0.11, 0.06]
DCBA (ug/L)	-0.05 [-0.20, 0.11]	-0.01 [-0.05, 0.02]	0.03 [-0.04, 0.09]	-0.01 [-0.02, 0.01]	-0.07 [-0.26, 0.12]	-0.01 [-0.06, 0.04]	0.05 [-0.00, 0.10]	-0.01 [-0.03, -0.00]
AChE (U/mL)	-8.16 [-17.27, 0.95]	2.93 [-0.66, 6.51]	1.01 [-2.33, 4.35]	-0.49 [-1.82, 0.84]	-2.59 [-14.22, 9.04]	0.93 [-3.70, 5.56]	0.51 [-2.04, 3.06]	-0.20 [-1.24, 0.84]

2,4-D= 2,4-Dichlorophenoxyacetic acid; AChE=acetylcholinesterase; AND=acetamiprid-N-desmethyl; TCPy= 3,5,6-Trichloro-2-pyridinol; DCBA=3-(diethylcarbamoyl) benzoic acid; MDA= Malathion dicarboxylic acid; 3-PBA=3-phenoxybenzoic acid; PNP= para-Nitrophenol.

Linear GEE model results for each pesticide metabolite and AChE and each inflammatory biomarker.

Presented are the linear and squared β coefficients for the quadratic models, where β represents the % difference in the inflammatory marker concentration for 1 unit increase in urinary metabolite concentration. Models were adjusted for the following covariates: age, gender, race, BMI-for-age z-score, height-for-age z-score, parental education level, creatinine, smokers at home (yes/no).

Bolded text indicates significant findings ($p < 0.05$)

Table 2 (continued). Independent quadratic associations between biomarkers of pesticide exposure and inflammation

Exposure Biomarkers	Inflammatory Biomarkers					
	CD14 (ng/ml)		sICAM-1 (ng/ml)		sVCAM-1 (ug/ml)	
	β (95% CI)	β^2 (95% CI)	β (95% CI)	β^2 (95% CI)	β (95% CI)	β^2 (95% CI)
2,4-D (ug/L)	4.6 [-48.3, 57.5]	5.3 [-16.8, 27.4]	92.4 [32.9, 151.9]	53.25 [27.3, 79.2]	125.5 [56.5, 194.5]	61.1 [30.5, 91.7]
Glyphosate (ug/L)	-1.0 [-48.5, 28.6]	-6.7 [-12.9, -0.4]	30.1 [-15.4, 75.6]	9.6 [0.4, 18.7]	25.1 [-25.7, 75.9]	7.1 [-2.0, 16.2]
AND (ug/L)	13.1 [-53.0, 79.2]	19.4 [-24.2, 62.9]	-19.6 [-88.9, 49.7]	-38.8 [-82.6, 5.1]	-24.5 [-110.1, 61.2]	-39.3 [-96.1, 17.5]
TCPy (ug/L)	36.9 [-40.9, 114.7]	-17.5 [-49.7, 14.7]	-20.6 [-120.6, 79.5]	10.8 [-30.8, 52.4]	-48.2 [-171.0, 74.5]	19.3 [-34.7, 73.3]
3-PBA (ug/L)	-12.9 [-56.9, 31.0]	-1.8 [-31.6, 28.7]	49.4 [-21.3, 120.1]	20.5 [-21.7, 62.8]	64.1 [-28.8, 156.9]	23.1 [-33.4, 79.6]
MDA (ug/L)	-34.3 [-237.4, 168.7]	26.8 [-61.4, 114.9]	-108.9 [-315.5, 97.8]	28.2 [-59.1, 115.6]	-193.7 [-445.5, 58.1]	73.9 [-29.6, 177.3]
PNP (ug/L)	29.4 [-86.9, 145.7]	8.1 [-60.9, 77.1]	-39.4 [-150.1, 71.3]	-35.1 [-111.3, 41.1]	-12.1 [-160.7, 136.4]	-22.5 [-116.0, 71]
DCBA (ug/L)	4.6 [-34.5, 43.7]	2.9 [-10.3, 16.1]	1.6 [-45.7, 48.9]	-3.2 [-16., 9.8]	-1.4 [-51.2, 48.4]	-6.8 [-20.8, 7.2]
AChE (U/mL)	339.8 [-1516.1, 2195.7]	-196.4 [-949.6, 556.9]	-611.5 [-2836.2, 1613.1]	244.4 [-666.9, 1155.7]	-667.6 [-2960.5, 1625.4]	247.5 [-695.5, 1190.5]

2,4-D= 2,4-Dichlorophenoxyacetic acid; AChE=acetylcholinesterase; AND=acetamiprid-N-desmethyl; TCPy= 3,5,6-Trichloro-2-pyridinol; DCBA=3-(diethylcarbamoyl) benzoic acid; MDA= Malathion dicarboxylic acid; 3-PBA=3-phenoxybenzoic acid; PNP= para-Nitrophenol.

Linear GEE model results for each pesticide metabolite and AChE and each inflammatory biomarker.

Presented are the linear and squared β coefficients for the quadratic models, where β represents the % difference in the inflammatory marker concentration for 1 unit increase in urinary metabolite concentration. Models were adjusted for the following covariates: age, gender, race, BMI-for-age z-score, height-for-age z-score, parental education level, creatinine, smokers at home (yes/no).

Bolded text indicates significant findings ($p < 0.05$)

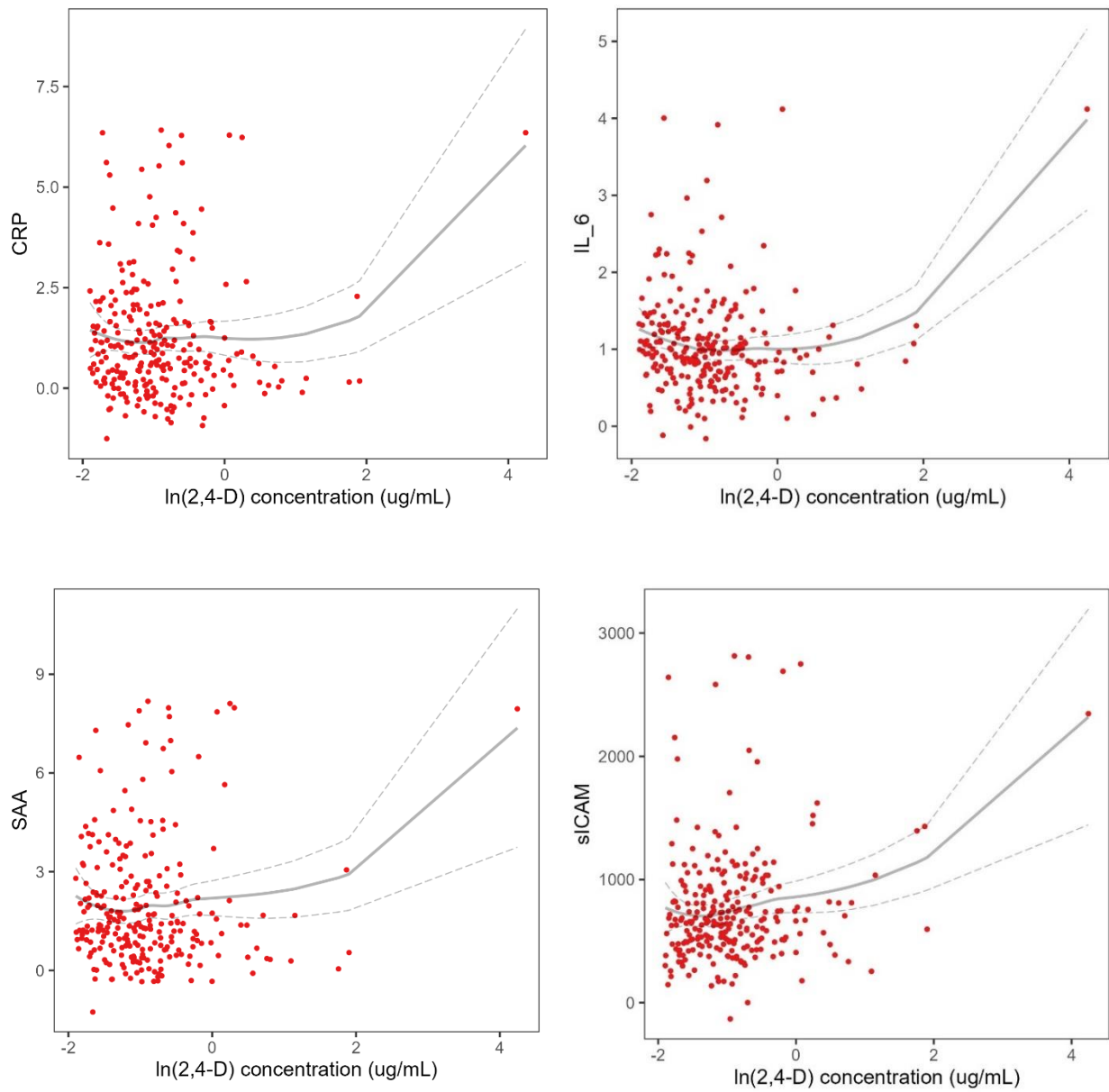
Table 3. Associations using PLS regression for the associations of pesticide and DEET metabolites with plasma inflammatory markers in adolescents, N= 507.

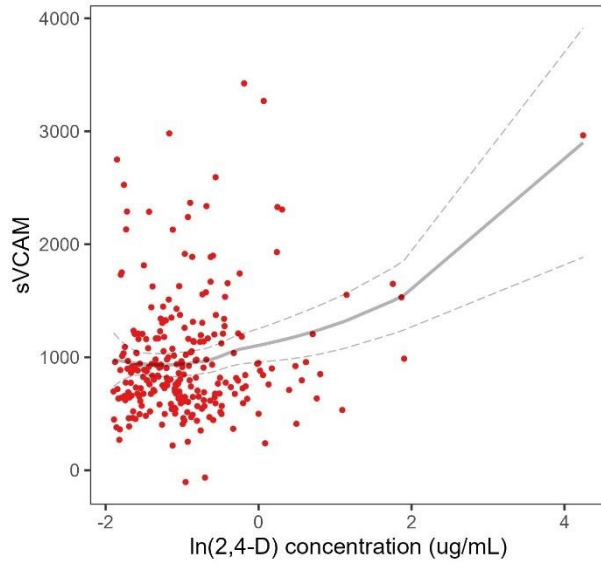
Inflammatory Marker	Full model	PLS	
		Component 1	Component 1 + Component 2
sCD-14	0 ¹	0.001	0 ¹
CRP	0.017	0.023	0.027
IL-6	0.003	0.013	0.013
SAA	0.014	0.024	0.024
sICAM-1	0.006	0.015	0.016
sVCAM-1	0.003	0.014	0.013
TNF- α	0 ¹	0.010	0.008

Displayed values are adjusted R^2 for 3 models: full model, which includes the linear combination of the pesticide variables, including the standardized pesticide variables in one model (2,4-D, Glyphosate, TCPy, 3-PBA, PNP), PLS model including the 1st component only and PLS model including the 1st and 2nd components. The outcomes (inflammatory markers CD-14, CRP, IL-6, SAA, sICAM-1, sVCAM-1, TNF- α and ETU) are residualized for the following covariates: age, gender, race, height-for-age z-score, and parental education. Bolded text indicates statistical significance for 95% confidence.

¹ Negative adjusted R^2 values were set to 0

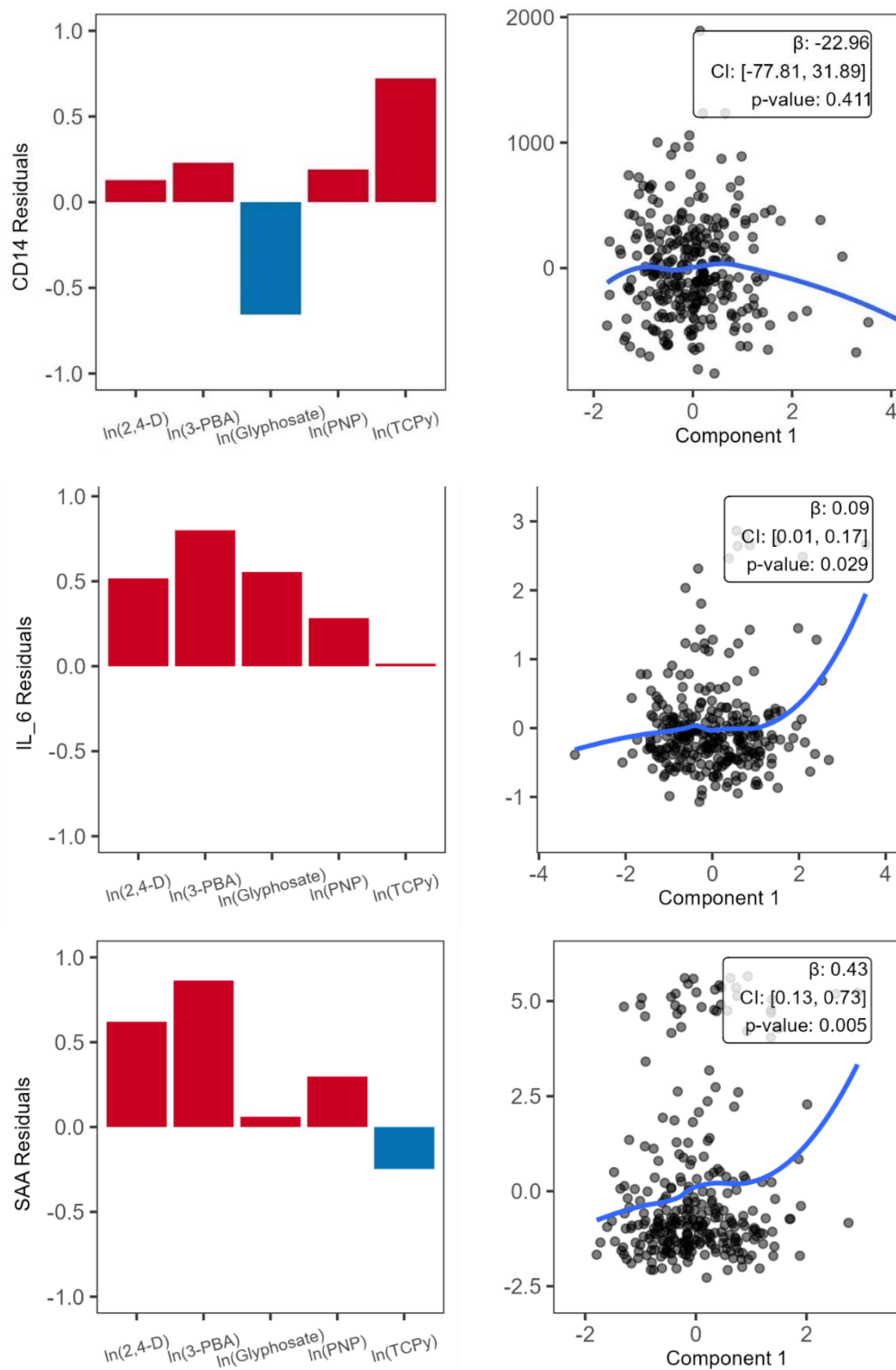
Figure 1: Adjusted associations between pesticide metabolites and inflammatory biomarkers among adolescents, N=507.

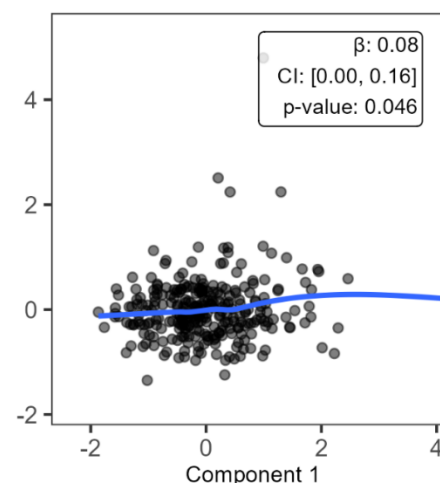
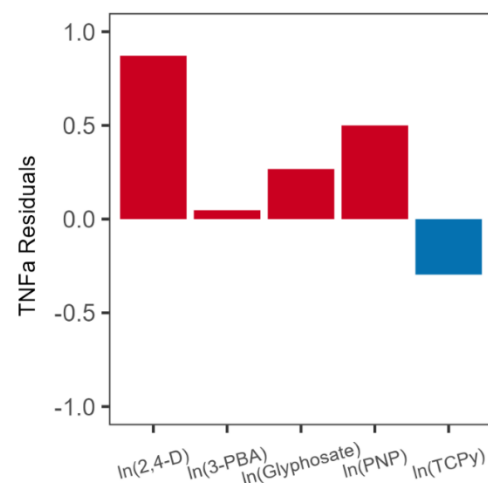
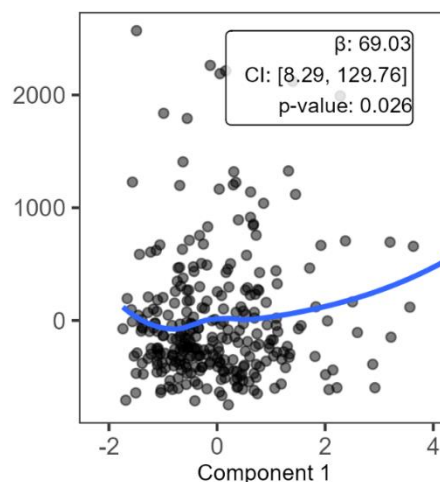
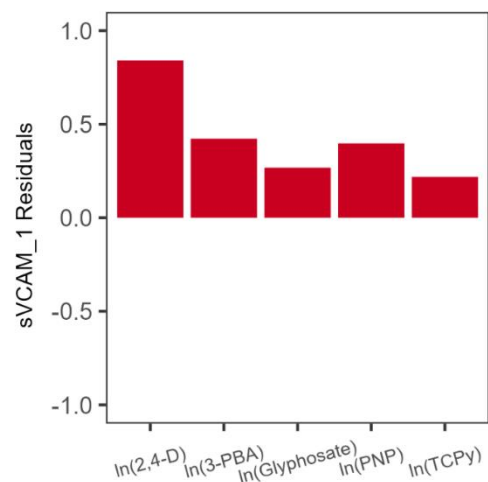
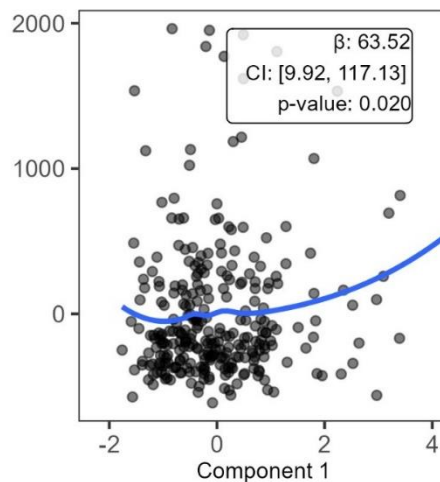
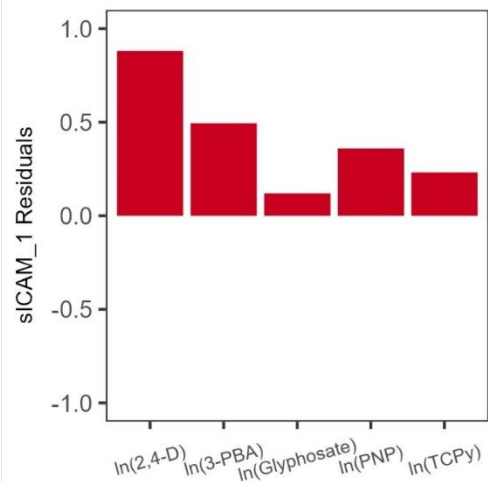


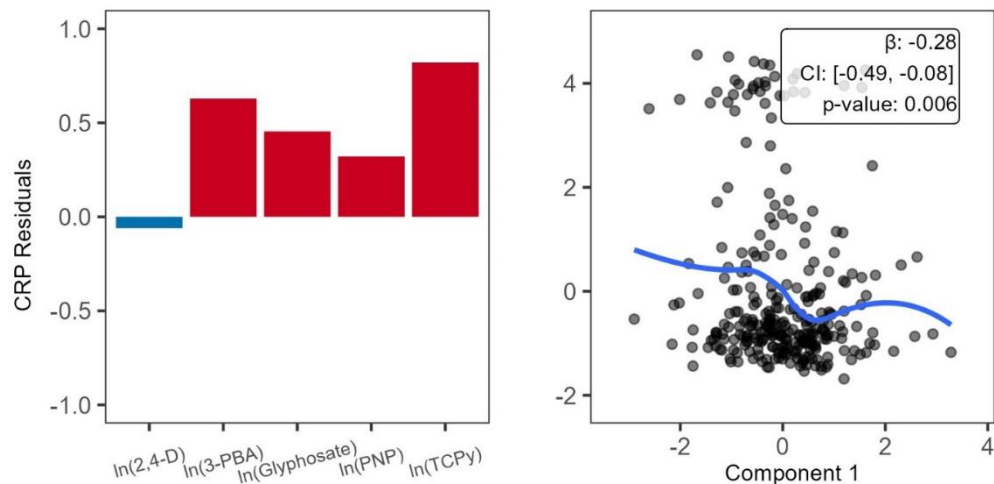


Red dots represent fully adjusted least squares means for 400 ranks. Gray lines are the LOESS model lines and 95% CI based on the adjusted least squares means data points.

Figure 2. PLS Component 1 loadings and associations between component 1 with inflammation markers in the ESPINA study. N=507







The figures on the left side depict the vector loadings of each independent variable within composite 1. Red color indicates that the component contributes to the same direction as the composite, and blue indicates that it contributes to the opposite direction. The figures on the right are estimated curves depicting the relationship between the composite variable and each inflammatory biomarker with β -coefficient estimates, confidence intervals (CI) and p-values shown in the top left-hand corner of each graph. β represents percent difference in inflammatory marker concentration for a 10% increase in urinary metabolite concentration

Table S1. Correlations between inflammatory biomarkers

	CD14	CRP	IL-6	SAA	sICAM-1	sVCAM-1	TNF-α
CD14	1	0.06	0.02	0.09	0	0.02	0.24
CRP		1	0.05	0.63	0.52	0.51	0.08
IL-6			1	0.03	0.01	0.01	0.04
SAA				1	0.4	0.46	0.03
sICAM-1					1	0.88	0.22
sVCAM-1						1	0.25
TNF-α							1

Values in bold were significant at a $p < 0.05$ level

Table S2. Independent linear associations between biomarkers of pesticide exposure and inflammation. N=507

Exposure biomarker	Inflammatory Biomarkers						
	CD14	CRP	IL-6	SAA	sICAM-1	sVCAM-1	TNF- α
2,4-D (ug/L)	1.03 [-22.30, 24.36]	0.04 [-0.09, 0.17]	0.02 [-0.05, 0.09]	0.06 [-0.10, 0.22]	29.06 [-8.21, 66.32]	41.23 [-2.16, 84.63]	0.02 [-0.02, 0.06]
Glyphosate (ug/L)	5.11 [-4.96, 15.19]	-0.04 [-0.09, 0.01]	0.01 [-0.01, 0.02]	-0.02 [-0.08, 0.04]	-0.90 [-15.59, 13.78]	0.40 [-13.90, 14.69]	0.01 [-0.01, 0.02]
AND (ug/L)	8.12 [-18.37, 34.62]	0.01 [-0.08, 0.10]	0.02 [-0.02, 0.06]	-0.04 [-0.16, 0.08]	-13.57 [-39.14, 12.01]	-15.60 [-47.15, 15.94]	-0.05 [-0.08, -0.02]
TCPy (ug/L)	-0.26 [-18.73, 18.21]	-0.05 [-0.13, 0.02]	-0.00 [-0.04, 0.03]	-0.04 [-0.14, 0.06]	1.02 [-21.49, 23.52]	-2.79 [-29.83, 24.25]	-0.01 [-0.03, 0.02]
MDA (ug/L)	-0.02 [-44.37, 44.33]	-0.04 [-0.22, 0.15]	-0.06 [-0.12, 0.00]	-0.18 [-0.35, -0.01]	-29.42 [-73.92, 15.08]	-39.89 [-107.06, 27.27]	-0.07 [-0.16, 0.02]
PNP (ug/L)	7.83 [-21.71, 37.37]	0.01 [-0.11, 0.14]	-0.01 [-0.05, 0.04]	-0.04 [-0.19, 0.11]	1.70 [-28.48, 31.88]	6.41 [-30.36, 43.18]	0.03 [-0.01, 0.07]
3-PBA (ug/L)	-4.80 [-21.78, 12.18]	-0.04 [-0.12, 0.04]	0.02 [-0.01, 0.06]	0.05 [-0.07, 0.16]	14.87 [-9.52, 39.27]	20.16 [-11.02, 51.34]	0.01 [-0.02, 0.03]
DCBA (ug/L)	4.94 [-6.99, 16.88]	-0.03 [-0.07, 0.01]	0.00 [-0.01, 0.02]	-0.04 [-0.09, 0.01]	-2.82 [-15.61, 9.97]	-7.82 [-21.81, 6.17]	0.00 [-0.01, 0.02]
AChE (U/mL)	-61.13 [-145.93, 23.68]	-0.34 [-0.76, 0.07]	-0.09 [-0.25, 0.07]	-0.11 ([-0.62, 0.40] 0.68)	-0.37 [-105.75, 105.02]	-19.97 [-136.63, 96.69]	0.00 [-0.12, 0.12]

2,4-D= 2,4-Dichlorophenoxyacetic acid; AChE=acetylcholinesterase; AND=acetamiprid-N-desmethyl; TCPy= 3,5,6-Trichloro-2-pyridinol; DCBA=3-(diethylcarbamoyl) benzoic acid; MDA= Malathion dicarboxylic acid; 3-PBA=3-phenoxybenzoic acid; PNP= para-Nitrophenol.

Presented are the β coefficients for the linear models, where β represents 1 unit of change in the inflammatory marker concentration for 1 unit of change in the urinary metabolite concentration. Models were adjusted for the following covariates: age, gender, race, BMI-for-age z-score, height-for-age z-score, parental education level, creatinine, smokers at home (yes/no). Bolded values are $p < 0.05$.