

Local activity alterations in autism spectrum disorder correlate with neurotransmitter properties and ketamine induced brain changes

Authors: Pascal Grumbach^{1,2}, Jan Kasper^{1,3}, Joerg F. Hipp⁴, Anna Forsyth⁵, Sofie L. Valk^{1,3,6,7}, Suresh Muthukumaraswamy⁵, Simon B. Eickhoff^{1,3}, Leonhard Schilbach^{8,9}, Juergen Dukart^{1,3*}

Affiliations:

¹Institute of Neurosciences and Medicine, Brain & Behaviour (INM-7), Research Centre Juelich; Wilhelm-Johnen-Straße 1, 52425 Juelich, Germany.

²Department of Psychiatry and Psychotherapy, Medical Faculty and University Hospital Duesseldorf, Heinrich Heine University Duesseldorf; Bergische Landstraße 2, 40629 Duesseldorf, Germany.

³Institute of Systems Neuroscience, Medical Faculty & University Hospital Duesseldorf, Heinrich Heine University Duesseldorf; Moorenstraße 5, 40225 Duesseldorf, Germany.

⁴Roche Pharma Research and Early Development, Neuroscience and Rare Diseases, Roche Innovation Center Basel, F. Hoffmann–La Roche Ltd.; Basel, Switzerland.

⁵School of Pharmacy, Faculty of Medical and Health Sciences, University of Auckland; 85 Park Road, Grafton, Auckland, 1023, New Zealand.

⁶Max Planck School of Cognition; Stephanstraße 1A, 04103 Leipzig, Germany.

⁷Max Planck Institute for Human Cognitive and Brain Sciences; Stephanstraße 1A, 04103 Leipzig, Germany.

⁸Department of General Psychiatry 2, LVR-Klinikum Duesseldorf; Bergische Landstraße 2, 40629 Duesseldorf, Germany.

⁹Department of Psychiatry and Psychotherapy, University Hospital, Ludwig Maximilians University Munich; Nußbaumstraße 7, 80336 München.

*Corresponding author. Email: j.dukart@fz-juelich.de

One Sentence Summary: Local activity alterations in ASD co-localize with glutamatergic and GABAergic neurotransmission and were similar to ketamine-induced brain changes.

Abstract: Autism spectrum disorder (ASD) is a neurodevelopmental condition associated with altered resting-state brain function. An increased excitation-inhibition (E/I) ratio is discussed as a potential pathomechanism but in-vivo evidence of disturbed neurotransmission underlying these functional alterations remains scarce. We compared rs-fMRI local activity (LCOR) between ASD (N=405, N=395) and neurotypical controls (N=473, N=474) in two independent cohorts (ABIDE1 and ABIDE2). We then tested how these LCOR alterations co-localize with specific neurotransmitter systems derived from nuclear imaging and compared them with E/I changes induced by GABAergic (midazolam) and glutamatergic medication (ketamine). Across both cohorts, ASD subjects consistently exhibited reduced LCOR, particularly in higher-order default mode network nodes, alongside increases in bilateral temporal regions, the cerebellum, and brainstem. These LCOR alterations negatively co-localized with dopaminergic (D1, D2, DAT), glutamatergic (NMDA, mGluR5), GABAergic (GABA_A) and cholinergic neurotransmission (VACHT). The NMDA-antagonist ketamine, but not GABA_A-potentiator midazolam, induced LCOR changes which co-localize with D1, NMDA and GABA_A receptors, thereby resembling alterations observed in ASD. We find consistent local activity alterations in ASD to be spatially associated with several major neurotransmitter systems. NMDA-antagonist ketamine induced neurochemical changes similar to ASD-related alterations, supporting the notion that pharmacological modulation of the E/I balance in healthy individuals can induce ASD-like functional brain changes. These findings provide novel insights into neurophysiological mechanisms underlying ASD.

INTRODUCTION

Autism spectrum disorder (ASD) is a neurodevelopmental condition primarily characterized by deficits in communication, impaired social interaction and presence of stereotyped and repetitive behavior. Diagnosis is based on behavior and frequently complicated by the heterogeneity of symptoms as well as the overlap with other psychiatric conditions^{1,2}. The underlying neurobiological mechanisms of ASD remain poorly understood, reliable biomarkers are lacking, and as a result, an effective pharmacological treatment model has yet to be established³.

Resting-state functional magnetic resonance imaging (rs-fMRI) has the potential to offer easily applicable, objective neural biomarkers to assist traditional clinical diagnosis of ASD. Therefore, numerous neuroimaging studies have investigated resting-state functional alterations in individuals with ASD compared to typically developed controls (TD). Despite variability in these findings, potentially due to the use of different measures, meta-analyses have identified consistent patterns of both functional hyperactivity and -connectivity in the cerebellum, temporal and sensorimotor areas, alongside with hypoactivity and -connectivity within default mode network (DMN) nodes - a network important for self-referential processing and social cognition⁴⁻¹¹. To date, little is known about specific neurotransmitter properties underlying this functional reorganization in ASD and how these alterations relate to specific symptom domains¹²⁻¹⁴. Emerging evidence has implicated the dopaminergic modulation of motor pathways in manifestation of stereotyped behavior^{15,16}. Furthermore, increased serotonin reuptake has been linked to impaired social behavior and sensory development in a subset of children with ASD¹⁷.

Most prominent, alterations in glutamatergic neurotransmission have been proposed as pivotal in the pathophysiology of ASD^{18,19}. For example, Galineau et al. (2022) reported an overall

increased density of the metabotropic glutamate receptor mGluR5 in male adults with ASD²⁰. Several studies support the hypothesis that N-Methyl-D-Aspartate (NMDA) receptor dysfunction contributes to ASD symptoms indicating that these symptoms can be improved by the NMDA receptor agonist D-Cycloserine^{18,21}. Moreover, Siegel-Ramsey et al. (2021) found a negative association between increased glutamate concentrations in the dorsal anterior cingulate cortex (ACC) and reduced functional connectivity between the dorsal ACC and insular, limbic and parietal regions in male participants with ASD²². Findings of altered glutamate neurotransmission, coupled with evidence of GABAergic (γ -aminobutyric acid) deficit and synaptic dysregulation in ASD^{23,24}, have converged to support the hypothesis of an elevated excitation/inhibition (E/I) ratio as a potential molecular model for ASD^{25,26}. Despite an increasing body of evidence identifying ASD-related molecular and functional alterations, the relationship between both types of changes remains poorly understood. It also remains uncertain whether pharmacologically induced E/I modulation as elicited by glutamatergic medication ketamine and GABAergic medication midazolam in healthy subjects results in macroscale functional reorganization akin to that observed in ASD²⁷⁻²⁹.

The aim of the present study was to better understand the neurochemical basis of functional alterations in ASD by probing for their co-localization with *in-vivo* derived neurotransmitter information. We further test for similarity of ASD-related alterations with ketamine and midazolam induced functional brain changes. We hypothesize that (1) individuals with ASD show consistent local hyper- and hypoactivity in sensorimotor and DMN areas that co-localize with the spatial distribution of specific neurotransmitter and that (2) ketamine and midazolam induced neurochemical patterns are similar to these ASD-related alterations. More specifically, based on evidence from previous studies, we anticipate the strongest co-localizations with glutamatergic,

GABAergic, serotonergic and dopaminergic neurotransmission^{13,30}. To improve the robustness of our findings, all hypotheses were initially tested using the ABIDE1 dataset and subsequently validated in the independent ABIDE2 dataset³¹.

RESULTS

ASD subjects across datasets differ regarding age and symptom severity

In both datasets, individuals with ASD and TD controls did not differ in terms of age (Table 1). However, TD controls included a significantly higher proportion of female subjects. In ABIDE2, TD controls showed higher FIQ values as compared to ASD, whereas there was no FIQ difference in ABIDE1. Moreover, individuals with ASD showed more head motion during image acquisition than TD controls. ASD participants in ABIDE1 were older and exhibited a higher severity of autistic symptoms as compared to those in ABIDE2.

	ABIDE1 ¹			ABIDE2 ¹			<i>p</i> (ASD vs. ASD from ABIDE 1 and 2)
	ASD	TD	<i>p</i> (ASD vs. TD)	ASD	TD	<i>p</i> (ASD vs. TD)	
n	405 (46.1)	473 (53.9)		395 (45.5)	474 (54.5)		
age, years	17.3 (±8.6)	17.3 (±7.9)	.965 ²	15.6 (±9.8)	15.1 (±9.3)	.457 ²	.008 ²
age range, years	7.0-64.0	6.5-56.2		5.1-62.0	5.9-64.0		
sex, female	50 (12.3)	84 (17.8)	.026 ³	53 (13.4)	140 (29.5)	< .001 ³	.651 ³
FIQ	108.5 (±15.2)	108.7 (±14.0)	.873 ²	107.1 (±15.7)	115.1 (±12.6)	< .001 ²	.184 ²
maximal motion							
- translation, mm	1.0 (±0.6)	0.9 (±0.6)	.041 ²	0.9 (±0.6)	0.9 (±0.6)	.364 ²	.083 ²
- rotation, degree	0.9 (±0.6)	0.9 (±0.6)	.193 ²	1.0 (±0.7)	0.9 (±0.6)	0.41 ²	.314 ²
ADOS	12.1 (±4.1)	1.3 (±1.4)	< .001 ²	10.4 (±3.6)	1.8 (±1.7)	< .001 ²	< .001 ²
- communication	4.1 (±2.5)	0.5 (±0.7)	< .001 ²	3.1 (±1.4)	1.2 (±1.1)	< .001 ²	< .001 ²
- RSI	8.2 (±3.1)	0.8 (±1.0)	< .001 ²	7.1 (±2.5)	0.6 (±1.0)	< .001 ²	< .001 ²
- SBRI	2.3 (±2.3)	0.1 (±0.3)	< .001 ²	1.6 (±1.4)	0.1 (±0.3)	< .001 ²	< .001 ²

Table 1. Demographic and clinical characteristics of the ABIDE1 and ABIDE2 cohorts. ¹Numbers present either absolute numbers plus percent or mean plus standard deviation, ²*t*-test (two-tailed), ³ χ^2 -test (two-tailed), ASD = autism spectrum disorder; TD = typically developed controls; ABIDE = Autism Brain Imaging Data Exchange; FIQ = full scale IQ; ADOS = Autism Diagnostic Observation Schedule; RSI = reciprocal social interaction; SBRI = stereotyped behaviors and restricted interests; maximal available clinical data for ABIDE-I ADOS (n = 300 ASD, 28 TD), for ABIDE-II ADOS (n = 238 ASD, 42 TD).

Consistent local activity alterations in ASD

First, we tested for ASD-related alterations in local synchronization (LCOR) compared to TD controls. In whole-brain voxel-wise analyses in the ABIDE1 dataset, we found a pattern of LCOR reductions in ASD in brain regions comprising DMN hubs (bilateral posterior cingulate cortex (PCC), precuneus, frontal pole, frontal medial cortex), ACC, paracingulate gyrus and precentral gyrus as well as right hemispheric temporal pole, insular and opercular cortex (Figure 1A, Supplementary Table S1-S2). Increases in LCOR were observed in ASD in bilateral temporal regions, the cerebellum and right lateral occipital cortex and angular gyrus. The decrease but not the increase findings were largely replicated in ABIDE2 (Figure 1A, Supplementary Table S3-S4). The unthresholded ABIDE1 and ABIDE2 LCOR t-contrast maps displayed a strong positive spatial association ($r = .597, p < .001$) indicating a similar topology of ASD alterations across both cohorts.

LCOR alterations in ASD co-localize with specific neurotransmitter systems

Next, we evaluated whether LCOR alterations observed in ASD were spatially linked to the distribution of specific neurotransmitter systems derived from nuclear imaging in healthy volunteers. Whole-brain LCOR alterations in ASD subjects in ABIDE1 were found to significantly co-localize with the spatial distribution of dopaminergic D1 ($r = -.263, p = .005$) and D2 receptors ($r = -.322, p < .001$) as well as DAT ($r = -.187, p = .033$) and FDOPA ($r = -.200, p = .034$). Further significant associations were observed with serotonergic 5HT4 receptors ($r = .195, p = .024$), the ionotropic NMDA receptor ($r = -.332, p = .009$), the metabotropic mGluR5 receptors ($r = -.379, p = .004$), GABA_A receptors ($r = -.248, p = .005$), NAT ($r = -.202, p = .024$) and the cholinergic transporter VAcHT ($r = -.241, p = .003$). The significant co-localizations with D1, D2, DAT,

NMDA, mGluR5, GABA_A and VAC_hT were replicated in the ABIDE2 dataset (Figure 1B-C, Supplementary Table S5).

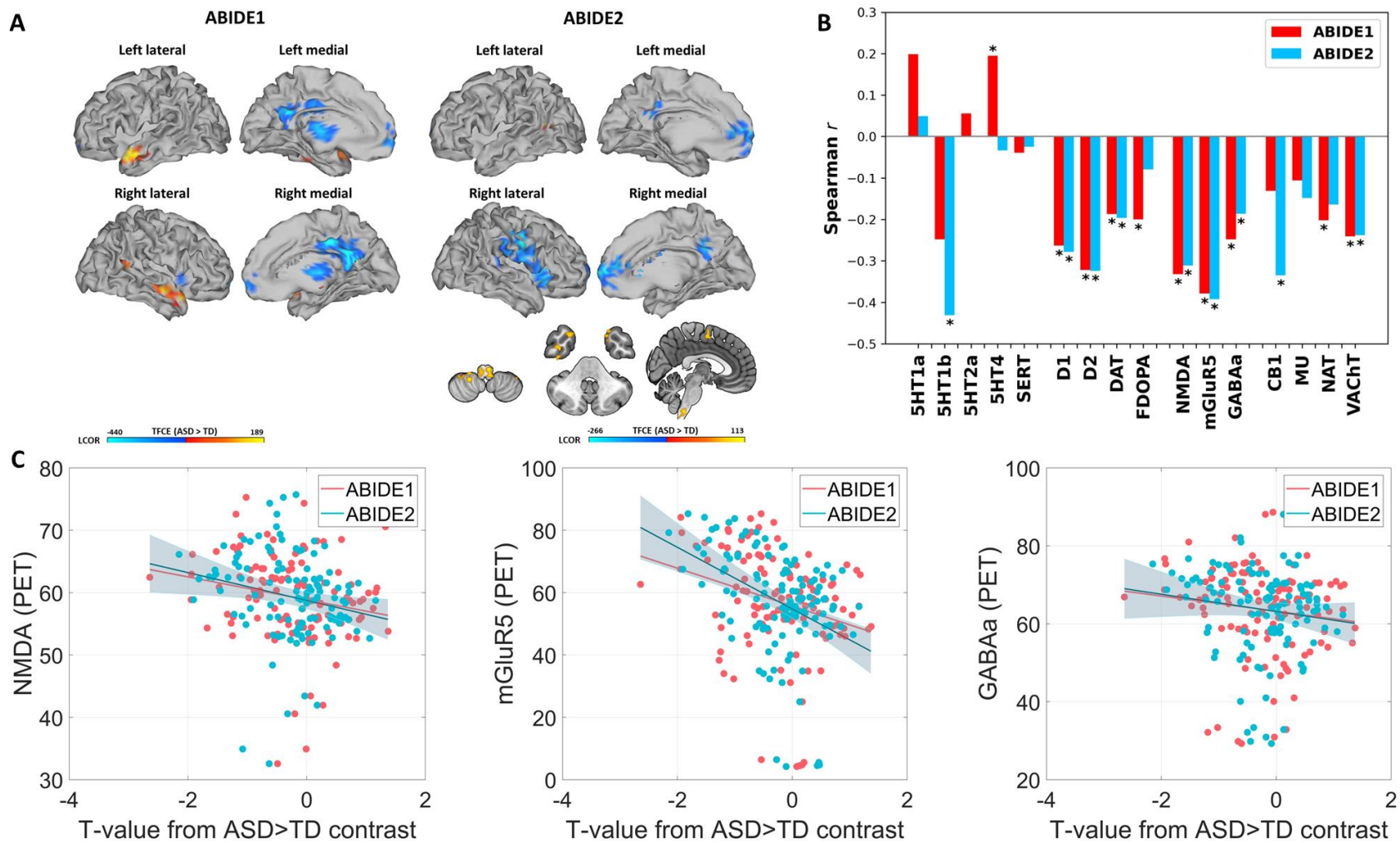


Fig. 1. Local functional activity alterations in subjects with autism spectrum disorder (ASD) and its neurotransmitter co-localizations. (A) Results from voxel-wise comparisons between subjects with ASD and typically developed controls (TD) regarding local synchronization (LCOR). Positive T-values (red-yellow) indicate increased LCOR in ASD subjects compared to TD, negative T-values (blue) represent decreased LCOR. Left: Results from voxel-wise comparisons within the Autism Brain Imaging Data Exchange (ABIDE) 1 (sagittal view). Right: Results from voxel-wise comparisons within the replication dataset ABIDE2 (sagittal and axial view). (B) Grouped bar plot depicting the spatial co-localizations of whole-brain LCOR alterations in subjects with ASD compared to TD with 16 different receptor and transporter distributions. The asterisk (*) represents significant co-localizations ($p < .05$). (C) Scatterplots showing the negative relationship between LCOR alterations in ASD (T-values) and the nuclear imaging derived spatial NMDA, mGluR5 and GABA_A receptor distributions.

Ketamine- and midazolam-induced LCOR changes co-localize with neurotransmitter systems

Similarly to the effects of ASD, we tested for co-localization of ketamine- and midazolam-induced changes (compared to placebo) with specific neurotransmitter systems. Ketamine administration induced LCOR changes significantly co-localized with D1 ($r = -.282$, $p\text{-FDR} = .032$), NMDA ($r = -.338$, $p\text{-FDR} = .032$) and GABA_A receptors ($r = -.251$, $p\text{-FDR} = .037$) (Supplementary Table S6 and Supplementary Figure S1). The effect of midazolam on LCOR co-localized with the distribution of 5HT_{2a} ($r = -.305$, $p\text{-FDR} = .047$), SERT ($r = .436$, $p\text{-FDR} < .001$), DAT ($r = .426$, $p\text{-FDR} = .002$), FDOPA ($r = .417$, $p\text{-FDR} < .001$), CB1 ($r = -.468$, $p\text{-FDR} = .002$), NAT ($r = .264$, $p\text{-FDR} = .019$) and VACHT ($r = .332$, $p\text{-FDR} < .001$).

ASD-related alterations co-localize with ketamine effects

We tested for similarity of ASD-related LCOR brain patterns with alterations induced by NMDA-receptor-antagonist ketamine and GABA_A-potentiator midazolam (s. Supplementary Material S7-10 and Supplementary Figure S2-3 for detailed description and visualization of LCOR changes induced by ketamine and midazolam compared to placebo). Whole-brain LCOR alterations observed across both ABIDE datasets showed a significant positive correlation with ketamine-induced changes (ABIDE1: $r = .381$, $p = .003$; ABIDE2: $r = .292$, $p = .036$). The effects of midazolam displayed no significant association with ASD-related LCOR alterations (ABIDE1: $r = .018$, $p = .903$; ABIDE2: $r = .205$, $p = .155$). The ketamine and midazolam whole-brain t -contrast maps did not show a significant association (Supplementary Table S11).

We then tested for ketamine- and midazolam-induced LCOR changes in regions significantly altered in ASD by computing t -tests for Δ KET and Δ MDZ changes (vs. placebo).

Ketamine significantly reduced LCOR in regions showing a reduction in ASD (Figure 2A) ($T = -1.978$, $p = .029$, Cohen's $d = 0.299$). Midazolam administration increased LCOR in regions displaying an increase in ASD ($T = 2.011$, $p = .027$, Cohen's $d = .270$).

Neurochemical co-localization profiles are similar between ASD and ketamine conditions

Next, we tested for the overall similarity of the pharmacological neurotransmitter co-localization profiles with those observed in individuals with ASD across all evaluated neurotransmitter systems. For this, we extracted mean Fisher's z values for the 16 tested receptors and transporters for ASD, ketamine and midazolam-related changes and computed Pearson correlations between these profiles. We found a significant association between the neurochemical profiles observed for ketamine and ASD in ABIDE2 ($r = .563$, $p = .023$) and a trend towards significance for ABIDE1 ($r = .448$, $p = .081$) (Figure 2B). The neurochemical profile induced by midazolam did not show a significant association with the ASD profile (ABIDE1: $r = -.241$, $p = .368$; ABIDE2: $r = .173$, $p = .521$). Notably, the neurochemical ASD profiles across ABIDE1 and ABIDE2 datasets were highly correlated ($r = .814$, $p < .001$). The neurochemical profiles for ketamine and midazolam were not significantly correlated ($r = .407$, $p = .118$) (Supplementary Table S6).

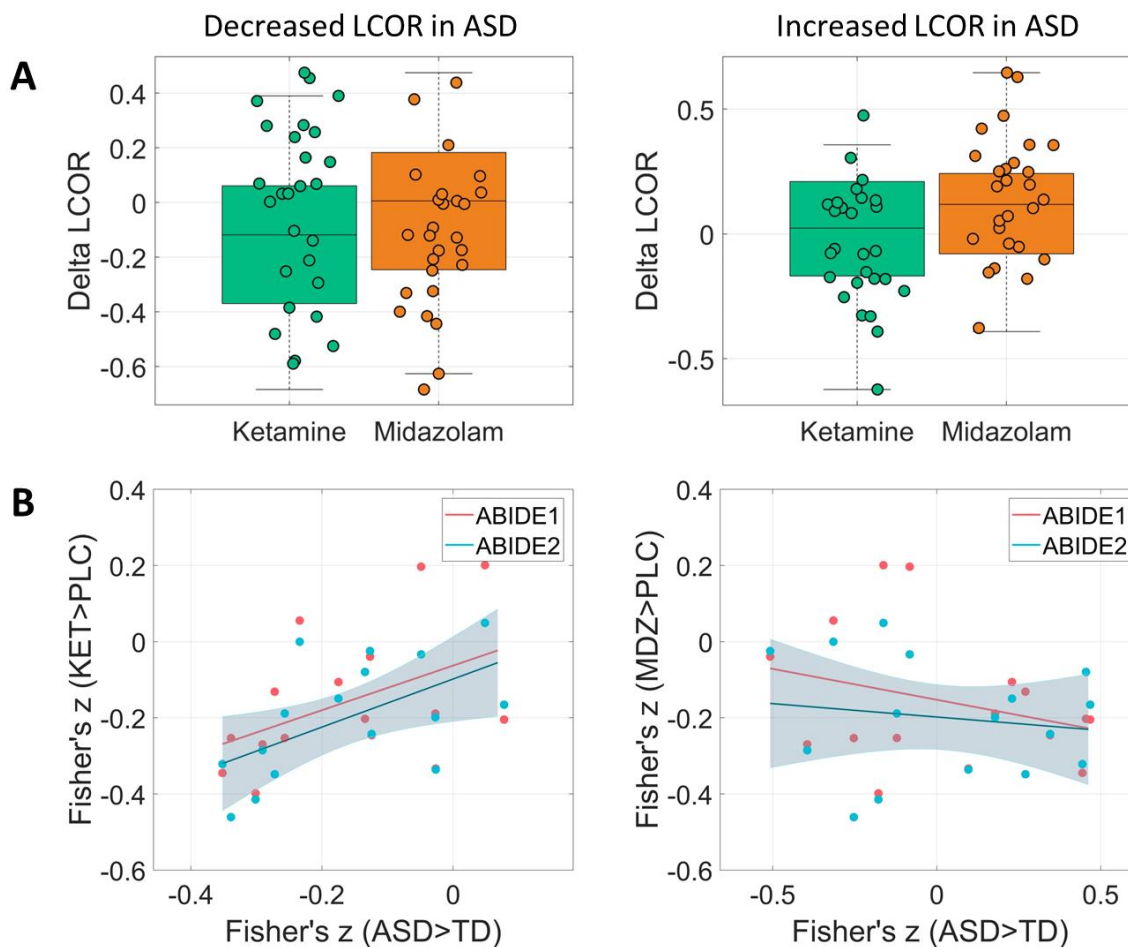


Fig. 2. Mean local activity (LCOR) after ketamine (KET) and midazolam (MDZ) administration in regions significantly altered in autism spectrum disorder (ASD) and correlation of the neurochemical co-localization profiles between ASD, KET and MDZ condition. (A) Boxplots comparing LCOR following KET and MDZ administration relative to placebo (PLC) condition. Delta LCOR is defined as the mean LCOR in the KET or MDZ condition minus the mean LCOR in the PLC condition. The plots display Delta LCOR values within all voxels that showed significant decreases (left) or increases (right) in individuals with ASD compared to typically developing controls (TD) in the Autism Brain Imaging Data Exchange 1 (ABIDE1) dataset. (B) Scatterplots illustrating the relationship between the 16 Fisher's z-values for KET (left) and MDZ (right) versus PLC, and ASD versus TD in the ABIDE1 and ABIDE2 datasets. The 16 Fisher's z-values represent the LCOR-neurotransmitter co-localization profiles for the respective contrast.

No consistent association of the LCOR-neurotransmitter co-localizations in ASD with clinical symptom domains

Lastly, we tested for associations between individual z-scores of ASD subjects for the replicated whole-brain LCOR-neurotransmitter co-localization findings and different ASD symptom domains as measured with the Autism Diagnostic Observation Schedule (ADOS)³² (Supplementary Table S12). In ABIDE1, no significant associations were found with the ADOS total score nor the three subscores (communication, social interaction, stereotyped behavior and restricted interests [SBRI]). A significant but weak negative association was observed in ABIDE2 between SBRI and the strength of LCOR-GABA_A co-localizations ($r = -.133$, $p = .040$) and a positive with the strength of LCOR-VAC_HT co-localizations ($r = .141$, $p = .030$) (Supplementary Fig. S4). Both findings did not survive a correction for multiple comparisons.

DISCUSSION

Here, we provide evidence for consistent local functional activity (LCOR) decreases in individuals with ASD. These alterations co-localized with *in-vivo* derived distributions of specific receptors and transporters covering dopaminergic, glutamatergic, GABAergic and cholinergic neurotransmission. The LCOR pattern observed in ASD across both cohorts was similar to the effect of NMDA-antagonist ketamine but not to the effect of the GABAergic medication midazolam. Ketamine reduced LCOR in regions exhibiting decreases in ASD. At the neurochemical level, the LCOR-neurotransmitter co-localization profile of ketamine was similar to changes observed in ASD.

Previous studies investigating functional alterations in ASD have often yielded inconsistent findings, potentially due to small sample sizes, the phenotypic heterogeneity of ASD, or varying methodological approaches⁴. Our results support the notion of consistent group-level local activity decreases as measured using LCOR in brain regions implicated in self-referential processing, social cognition, cognitive and emotional regulation³³⁻³⁶. These findings align with recent rs-fMRI meta-analyses indicating local hypoactivity within the PCC⁶, precuneus and right temporal gyri⁹ and reinforce the role of functional abnormalities of the DMN in the pathophysiology of ASD^{8,11}. Other studies utilizing ABIDE or other datasets have reported comparable alterations in regional homogeneity (ReHo), a metric closely related to LCOR^{37,38}. Additionally, task-based fMRI studies have demonstrated reduced activation in these regions in ASD during tasks that require self-related versus other-related judgements^{39,40}. This suggests that decreased LCOR in DMN nodes may relate to difficulties of individuals with ASD in self-referential processing and inferring mental states of others (“theory of mind”). Our findings further support recent efforts to identify neuro-subtypes in ASD, which have observed converging abnormalities in both the DMN and frontoparietal

networks across subgroups^{41,42}. Conversely, we did not observe consistent LCOR increases across both ABIDE datasets.

Most previous studies were restricted to the investigation of macroscale brain networks based on hemodynamic signals of rs-fMRI. To gain a deeper understanding of the neurobiological mechanisms underlying the emergent functional activity alterations in ASD, it is crucial to integrate data from molecular neuroimaging. This approach could extend the brain connectivity framework by incorporating a molecular perspective^{12,14,30}. Adopting this approach, we found LCOR alterations observed across both ABIDE datasets to be spatially related to dopaminergic, glutamatergic, GABAergic and cholinergic neurotransmission. Specifically, all co-localizations were negative with stronger LCOR reductions in ASD being associated with increased availability of respective receptors and transporters in health. In line with the observed clinical heterogeneity and recently suggested existence of ASD subtypes⁴¹, these findings support the notion of involvement of multiple neurotransmitter systems in the pathogenesis of ASD.

We observed the strongest similarity of ASD patterns with glutamatergic NMDA and mGluR5 receptor distributions, which represents the main excitatory neurotransmitter system. Glutamate acts in a homeostatic relationship with the inhibitory GABA system balancing neuronal excitability⁴³. The glutamatergic system plays an important role in brain development and neuroplasticity¹³. A balanced E/I ratio is considered to be crucial for maintaining mental health, with better overall cognitive performance in healthy children associated with a lower E/I ratio, particularly in higher-order association cortices such as the DMN nodes⁴⁴. Conversely, an increased E/I ratio has been frequently implicated in the ASD phenotype^{25,26}. For instance, elevated glutamate levels, which can be found in ASD in peripheral blood serum and within the central nervous system^{19,45}, have been shown to have neurotoxic effects potentially leading to neuronal

cell death and volumetric reductions as shown in structural MRI studies⁴⁶. A previous multimodal imaging study observed a negative association between increased glutamate concentrations in the dorsal ACC and reduced functional connectivity between the dorsal ACC and insular, limbic and parietal regions in male subjects with ASD²². The dorsal ACC plays an important role in top-down cognitive control and adaptive, flexible behavior with decreased functional connectivity in this region linked to deficient response inhibition and more repetitive behavior in ASD³³. Consistently, higher mGluR5 densities can be observed in male adults with ASD²⁰.

The crucial role of glutamate dysregulation in the pathogenesis of ASD has been highlighted by pharmacological studies manipulating the glutamatergic system²¹. Although the results are inconsistent, D-Cycloserine, a NMDA receptor agonist, showed positive effects in treatment of social impairment and stereotypies in subjects with ASD^{47,48}. Conversely, the uncompetitive NMDA receptor antagonist ketamine led to reduced mentalizing performance in a social cognition task associated with increased neural activity in the superior temporal sulcus and anterior precuneus as well as increased psychotic symptoms in healthy adults²⁹. In accordance, early postnatal ketamine administration in mice increased stereotyped behavior and social impairment in later adulthood combined with elevated glutamate and reduced GABA levels in the amygdala and hippocampus⁴⁹. In clinical studies, intranasal ketamine administration in adolescents and young adults with ASD showed no improvement of ASD core symptoms⁵⁰. Conceptually, one would expect a successful treatment to normalize brain functional patterns associated with a specific clinical condition. Our own findings are therefore in line with the negative outcome of the ketamine trial, showing that ketamine actually induces ASD-like brain patterns by reducing LCOR in regions where it is also reduced in ASD. Corroborating this finding, the neurochemical profile induced by ketamine significantly correlates with the neurochemical profile found in ASD across

all tested neurotransmitter systems. Specifically, the effect of ketamine on LCOR co-localized with the distribution of NMDA, mGluR5 and GABA_A receptors suggesting that ketamine may induce ASD-like activity patterns through disturbing the E/I balance. Future pharmacological studies should investigate the effectiveness of drugs manipulating this balance opposing the effects of ketamine in relieving ASD symptoms.

Optogenetic studies demonstrated that experimentally elevating the E/I ratio within the rodent medial prefrontal cortex, an important DMN hub, caused impaired information processing and social dysfunction⁵¹. Notably, compensatory elevation of inhibitory neurons alleviated social dysfunction by balancing the E/I ratio. Potentially, an atypical expression of GABA_A within the DMN contributes to ASD symptom severity^{23,52}. For instance, Oblak et al. (2010) found reduced GABA_A receptors and benzodiazepine binding sites in the PCC and fusiform gyrus post mortem in subjects with ASD⁵³. Additionally, meta-analyses accumulate evidence for a negative association between local GABA concentrations and functional activation of the medial prefrontal cortex and ACC during emotion processing tasks⁵⁴. Within our study, pharmacologically increased inhibition by GABA_A-potentiator midazolam in healthy volunteers did not affect LCOR in the DMN regions where LCOR was decreased in ASD. Conversely, midazolam significantly elevated LCOR in regions where LCOR was increased in ASD, indicating a partial induction of ASD-like brain patterns and complementing the findings observed with ketamine. At the neurochemical level, midazolam effects did not co-localize with the neurochemical signature of ASD (Figure 2B, Supplementary Figure 5). To date, there is modest evidence of the effectiveness of GABA modulators such as arbaclofen and acamprosate in treating ASD symptoms^{28,55}.

Several studies support the notion of altered dopamine and serotonin neurotransmission in ASD, a hypothesis further reinforced by clinical observations indicating a small positive effect of

the atypical antipsychotics aripiprazole and risperidone, as well as selective serotonin reuptake inhibitors, on alleviating stereotypies and aggressive behavior in some ASD subgroups^{13,17,56}. For instance, an overexpression of the dopaminergic system has been implicated in the modulation of stereotyped behavior in ASD animal models¹⁵. The dopamine hypothesis of ASD suggests that social deficits may result from dysfunction in the mesocorticolimbic system, while stereotypies are thought to arise from abnormalities within the nigrostriatal circuitry¹⁶. We observed that LCOR reductions in ASD were negatively co-localized with dopaminergic D1/D2 receptors and the dopamine transporter. These co-localizations did not yield significant correlations with specific symptom domains. Similarly, we did not find consistent *in-vivo* co-localization between LCOR and serotonergic neurotransmission across the ABIDE cohorts. Elevated blood serotonin levels have been reported in only a subset of autistic children (approximately 25%), and much of the supporting evidence comes from animal models¹⁷. For both of these analyses, our restriction to whole-brain analyses and disregard of potential subtypes may have limited the ability to detect some regionally and subtype specific co-localization patterns.

In that regard it is also important to note that the included multi-site datasets are extremely heterogeneous with respect to availability of demographic, medication status and clinical information as well as in terms of image quality. This variability may obscure more nuanced insights into the neurobiological mechanisms underlying ASD. Future research should aim to conduct large-scale standardized studies to allow for identification of distinct ASD subtypes and their associated neurobiological profiles.

Conclusions

We find LCOR alterations in subjects with ASD to negatively co-localize with the *in-vivo* derived distribution of dopaminergic, glutamatergic, GABAergic and cholinergic neurotransmitter

systems in two large independent cohorts. This pattern of LCOR alterations in ASD was similar to the effect induced by the NMDA-antagonist ketamine. These findings provide novel insights into the pathophysiology of ASD-related functional alterations and may guide new hypotheses for pharmacological interventions. Future neuro-subtyping studies aimed at disentangling the heterogeneity within ASD will be crucial for identifying biologically and clinically distinct subgroups that allow for precision psychiatry approaches in ASD.

MATERIALS AND METHODS

Study design

We included data from the open-access Autism Brain Imaging Data Exchange 1 (ABIDE1) into the study, which involves 1,112 participants (ASD: N = 539) from 17 international centers sharing rs-fMRI and corresponding anatomical T1-weighted images as well as phenotypic data⁵⁷. We additionally included the independently collected ABIDE2 dataset for subsequent replication of any results observed in the ABIDE1 cohort⁵⁸. ABIDE2 includes data from 1,114 participants (ASD: N = 521) from 19 centers. For further information of the varying recruitment and diagnostic criteria, please see https://fcon_1000.projects.nitrc.org/indi/abide. We excluded subjects with intellectual disability ($IQ \leq 70$) to reduce variability associated with low-functioning ASD, subjects with missing data and subjects with excessive head motion during image acquisition (translation > 3 mm or rotation > 3°). For ABIDE2, another 3 subjects were excluded due to preprocessing failure of imaging data (Supplementary Fig. S5). Thus, 878 subjects (405 with ASD) from ABIDE1 and 869 subjects (395 with ASD) from the ABIDE2 dataset were included in the analyses (Table 1).

For the comparison between pharmacological brain signatures and aberrant local functional activity in ASD, we used data from 30 healthy male participants without a history of recreational drug use, who were scanned in a single-blinded, placebo-controlled, three-way cross-over design receiving ketamine, midazolam or placebo. The substances were administered to a sub-anesthetic level through intravenous access by an infusion pump. This cohort and the assessment procedures have been extensively described in Forsyth et al. (2020)⁵⁹. Three participants were excluded following image quality control, so that the final dataset consisted of 27 participants ($M = 26.6 \pm 5.9$ years, 19-37 years).

All participants gave written informed consent, and all studies were approved by local ethics committees.

MRI data acquisition

As ABIDE1 and 2 data was retrospectively collected from multiple centers, acquisition of MRI images varied between sites. For individual site profiles regarding MRI protocol information, see Supplementary Table S13-14.

MRI images of the pharmacological dataset were acquired on a 3T MRI scanner (Siemens Skyra, Erlangen, Germany) with a 20-channel head coil. For structural imaging, a 3D magnetization-prepared rapid gradient-echo (3D-MPRAGE) scan [echo time (TE) = 3.42 ms; repetition time (TR) = 2100 ms; FOV = 256 mm²; flip angle 9°; 192 slices; slice thickness = 2 mm; voxel size = 1x1x1 mm] was acquired. Additionally, 246 volumes of BOLD rs-fMRI data were obtained using a T2*-weighted echo planar imaging (EPI) sequence (TE = 27 ms; TR = 2200 ms; flip angle 79°; 30 interleaved 3 mm slices; voxel size = 3x3x3 mm). During imaging, participants wore an EEG-cap, which was removed in one of the three sessions for high resolution 3D-MPRAGE structural image acquisition⁵⁹.

Preprocessing of imaging data

All rs-fMRI and structural imaging data were preprocessed using Statistical Parametric Mapping software SPM12⁶⁰ and the CONN toolbox⁶¹ implemented in Matlab (v2022b). Functional images were corrected for head motion and distortions (realign and unwarp), spatially normalized into MNI space and resampled to a resolution of 2 mm³ isotropic. Smoothing was applied using a 6 mm full-width at half maximum (FWHM) Gaussian kernel. Mean white matter, grey matter and cerebrospinal fluid signals, as well as 24 motion parameters were regressed out

before computing the voxel-based measures using the CONN toolbox⁶². Motion parameters were used to identify data to be excluded due to excessive head movement (translation > 3 mm and rotation > 3°). For the pharmacofMRI dataset, preprocessing was applied equivalently to the three pharmacological conditions (ketamine, midazolam and placebo).

Resting-state functional activity measure

To assess functional activity, we examined local synchronization (LCOR) by computing correlation at each voxel. LCOR was chosen as it provides a good approximation of local metabolism and has been recently shown to be sensitive to local pathological functional changes across different neurotransmitter systems^{63,64}. LCOR is defined as the average correlation between a given voxel with other voxels in its proximity, with distances weighted by a Gaussian kernel (25 mm FWHM)⁶⁵.

Voxel-wise group comparisons

To test for LCOR changes in ASD, we performed group comparisons between subjects with ASD and TD controls using the CONN toolbox. We utilized the ABIDE1 dataset for initial exploration and validated our findings using the ABIDE2 dataset. All group comparisons were corrected for age, sex, full scale IQ (FIQ), motion and site. Pairwise *t*-contrasts comparing ASD and TD were evaluated for significance using a voxel-wise family-wise error threshold of $p < 0.05$ combined with an exact permutation-based cluster threshold (threshold free cluster enhancement (TFCE), 1000 permutations, $p < 0.05$) to control for multiple testing. The same procedure was applied to the pharmacofMRI dataset comparing the respective pharmacological condition with placebo condition.

Co-localization between LCOR and neurotransmitter maps

The JuSpace toolbox was used for all further co-localization analyses⁶⁶. Distribution of neurotransmitter systems were derived from positron emission and single photon emission computer tomography (PET, SPECT) from independent healthy volunteer populations. Neurotransmitter maps were available for serotonergic (5-HT1a, 5-HT1b, 5-HT2a, 5HT4) and dopaminergic (D1, D2) receptors, the dopamine (DAT) and serotonin transporter (SERT), the dopamine synthesis capacity (fluorodopa PET - FDOPA), GABA_A, ionotropic NMDA and metabotropic glutamate receptor (mGluR5), μ -opioid (MU) and cannabinoid receptors (CB1), noradrenaline transporter (NAT) and vesicular acetylcholine transporter (VACHT).

We first examined whether ASD related alterations in LCOR were spatially similar to the above neurotransmitter systems correlating the respective PET maps with the unthresholded t-contrast maps of LCOR alterations observed in ASD (from ASD>TD contrast). For this, we adopted an exploration and replication approach. We first tested for significant co-localizations in ABIDE1 applying an uncorrected p-value of $p < 0.05$ (two-sided) and then tested for replication of the significant findings in ABIDE2. The default Neuromorphometrics atlas (119 regions) covering cortical, subcortical and cerebellar regions of interest was used for all analyses. Partial Spearman correlations were computed adjusting for spatial autocorrelation using the gray matter probability map. Exact permutation-based p-values were computed comparing the observed correlation coefficients to those obtained using permuted PET maps whilst preserving the spatial autocorrelation. A detailed description of the workflow within the JuSpace toolbox is provided by Dukart et al. (2021)⁶⁶.

This procedure was repeated with the pharmacological dataset testing for co-localization of the unthresholded t-contrasts for LCOR changes induced by ketamine and midazolam (both

testing for increases over placebo) with the respective neurotransmitter maps. The Benjamini-Hochberg procedure was used to account for multiple comparisons.

Correlation of ASD-related LCOR alterations with ketamine- and midazolam-induced brain changes

To test for similarity between functional alterations induced by NMDA-antagonist ketamine and GABA_A-potentiator midazolam and ASD-related alterations, we first spatially correlated the respective whole-brain LCOR t-contrast maps. To assess the impact of glutamatergic and GABAergic medication on brain regions exhibiting significant differences between ASD and TD groups, we separately extracted mean LCOR values per subject for ketamine, midazolam and placebo conditions from regions showing significant increases or decreases in ASD in the ABIDE1 dataset. We then calculated Δ -scores for each subject in regions showing either increases or decreases in ASD (separately) by subtracting LCOR values for placebo from ketamine and midazolam conditions. We then performed one-sample *t*-tests for Δ KET and Δ MDZ based on the hypothesis that both drugs induce ASD-like brain patterns ($p < 0.05$ one-sided).

Lastly, we tested for similarity of the mappings of ASD alterations onto all neurotransmitter systems with those observed for ketamine and midazolam. For this, we first extracted the 16 Fisher's z-transformed Spearman correlations observed for the co-localization between ASD-related alterations and all of the above neurotransmitter maps. Similarly, we extracted the correlation values observed for the co-localization of changes induced by ketamine and midazolam with the same 16 neurotransmitter maps. We computed Pearson correlations between these neurochemical co-localization profiles obtained for ASD, and ketamine and midazolam conditions.

Relationship of LCOR-neurotransmitter co-localizations with clinical phenotypes of ASD

Next, we tested whether the significant co-localizations of LCOR with specific neurotransmitters across both ABIDE cohorts relate to symptom severity in ASD. For this, we calculated individual z-scores in each region for each ASD subject relative to the mean of the respective TD control group and correlated the obtained z-maps with the respective neurotransmitter maps. The obtained individual Fisher's z-transformed coefficients were used to perform Pearson correlations with clinical measures of autistic symptom severity within IBM SPSS Statistics (Version 27)⁶⁷.

We used the Autism Diagnostic Observation Schedule (ADOS) as a measure of ASD symptom severity³². The ADOS is a semi structured, standardized measure of autistic phenotypes which consists of four age-adjusted 30-minute modules according to the level of expressive language covering the following three subdomains: communication deficits, reciprocal social interaction deficits (RSI), and stereotyped behaviors and restricted interest (SBRI) (Table 1).

List of Supplementary Materials

Results

Table S1-S4. Local functional activity alterations in ASD compared to TD.

Table S5. LCOR alterations in ASD relate to the *in-vivo* distribution of neurotransmitter systems.

Table S6. Neurotransmitter co-localizations with LCOR changes induced by ketamine and midazolam.

Fig. S1. Visualization of ketamine and midazolam co-localization profiles.

Table S7-10. LCOR alterations induced by ketamine and midazolam administration.

Fig. S2-3. Visualization of ketamine and midazolam induced LCOR changes.

Table S11. Similarity of ASD and medication effects.

Table S12. Correlation of the LCOR-neurotransmitter co-localizations with ASD symptom domains in ABIDE1 and ABIDE2.

Fig. S4. Correlation of the LCOR-neurotransmitter co-localizations in ASD with clinical symptom domains.

Materials and Methods

Fig. S5. Exclusion process.

Table S13-14. MRI data acquisition.

References and Notes

1. Fusar-Poli, L., Brondino, N., Politi, P. & Aguglia, E. Missed diagnoses and misdiagnoses of adults with autism spectrum disorder. *Eur. Arch. Psychiatry Clin. Neurosci.* **272**, 187–198 (2022).
2. Lord, C., Elsabbagh, M., Baird, G. & Veenstra-Vanderweele, J. Autism spectrum disorder. *Lancet* **392**, 508–520 (2018).
3. Parellada, M. *et al.* The neurobiology of autism spectrum disorders. *Eur. Psychiatry* **29**, 11–19 (2014).
4. Hull, J. V. *et al.* Resting-state functional connectivity in autism spectrum disorders: A review. *Front. Psychiatry* **7**, (2017).
5. Jia, H., Wu, X. & Wang, E. Aberrant dynamic functional connectivity features within default mode network in patients with autism spectrum disorder: evidence from dynamical conditional correlation. *Cogn. Neurodyn.* **16**, 391–399 (2022).
6. Lau, W. K. W., Leung, M. K. & Lau, B. W. M. Resting-state abnormalities in Autism Spectrum Disorders: A meta-analysis. *Sci. Rep.* **9**, 1–8 (2019).
7. Liu, X. & Huang, H. Alterations of functional connectivities associated with autism spectrum disorder symptom severity: a multi-site study using multivariate pattern analysis. *Sci. Rep.* **10**, 1–13 (2020).
8. Padmanabhan, A., Lynch, C. J., Schaer, M. & Menon, V. The Default Mode Network in Autism. *Biol. Psychiatry Cogn. Neurosci. Neuroimaging* **2**, 476–486 (2017).
9. Wang, W. *et al.* Altered resting-state functional activity in patients with autism spectrum disorder: A quantitative meta-analysis. *Front. Neurol.* **9**, 1–9 (2018).

10. Li, B. J. *et al.* A brain network model for depression: From symptom understanding to disease intervention. *CNS Neurosci. Ther.* **24**, 1004–1019 (2018).
11. Wang, Q. *et al.* Resting-state abnormalities in functional connectivity of the default mode network in migraine: A meta-analysis. *Brain Imaging Behav.* **11**, 2583–2592 (2021).
12. Hansen, J. Y. *et al.* Mapping neurotransmitter systems to the structural and functional organization of the human neocortex. *Nat. Neurosci.* **25**, 1569–1581 (2022).
13. Marotta, R. *et al.* The neurochemistry of autism. *Brain Sci.* **10**, 1–18 (2020).
14. Sala, A. *et al.* Brain connectomics: time for a molecular imaging perspective? *Trends Cogn. Sci.* **27**, 353–366 (2023).
15. Ramos, F. I. O., Martins, K. G. F., Bachur, T. P. R. & Aragão, G. F. Correlations between stereotypies in ASD and neurotransmitters: a systematic review. *Rev. Neurociencias* **31**, 1–40 (2023).
16. Pavál, D. A Dopamine Hypothesis of Autism Spectrum Disorder. *Dev. Neurosci.* **39**, 355–360 (2017).
17. Muller, C. L., Anacker, A. M. J. & Veenstra-VanderWeele, J. The serotonin system in autism spectrum disorder: From biomarker to animal models. *Neuroscience* **321**, 24–41 (2016).
18. Won, H. *et al.* Autistic-like social behaviour in Shank2-mutant mice improved by restoring NMDA receptor function. *Nature* **486**, 261–265 (2012).
19. Zheng, Z., Zhu, T., Qu, Y. & Mu, D. Blood glutamate levels in autism spectrum disorder: A systematic review and meta-analysis. *PLoS One* **11**, 2–13 (2016).

20. Galineau, L. *et al.* Glutamatergic synapse in autism: a complex story for a complex disorder. *Mol. Psychiatry* 1–9 (2022) doi:10.1038/s41380-022-01860-9.
21. Lee, E. J., Choi, S. Y. & Kim, E. NMDA receptor dysfunction in autism spectrum disorders. *Curr. Opin. Pharmacol.* **20**, 8–13 (2015).
22. Siegel-Ramsay, J. E. *et al.* Glutamate and functional connectivity - support for the excitatory-inhibitory imbalance hypothesis in autism spectrum disorders. *Psychiatry Res. - Neuroimaging* **313**, 111302 (2021).
23. Zhao, H. *et al.* GABAergic System Dysfunction in Autism Spectrum Disorders. *Front. Cell Dev. Biol.* **9**, 1–16 (2022).
24. Robertson, C. E., Ratai, E. M. & Kanwisher, N. Reduced GABAergic Action in the Autistic Brain. *Curr. Biol.* **26**, 80–85 (2016).
25. Rubenstein, J. L. R. & Merzenich, M. M. Model of autism: Increased ratio of excitation/inhibition in key neural systems. *Genes, Brain Behav.* **2**, 255–267 (2003).
26. Uzunova, G., Pallanti, S. & Hollander, E. Excitatory/inhibitory imbalance in autism spectrum disorders: Implications for interventions and therapeutics. *World J. Biol. Psychiatry* **17**, 174–186 (2016).
27. Luppi, A. I. *et al.* Mapping Pharmacologically-induced Functional Reorganisation onto the Brain's Neurotransmitter Landscape. *bioRxiv* 1–73 (2022).
28. Purkayastha, P., Malapati, A., Yogeeswari, P. & Sriram, D. A Review on GABA/Glutamate Pathway for Therapeutic Intervention of ASD and ADHD. *Curr. Med. Chem.* **22**, 1850–1859 (2015).
29. Wasserthal, S. *et al.* Effects of NMDA-receptor blockade by ketamine on mentalizing and

- its neural correlates in humans: a randomized control trial. *Sci. Rep.* **13**, 1–12 (2023).
30. Li, X. *et al.* Structural, Functional, and Molecular Imaging of Autism Spectrum Disorder. *Neurosci. Bull.* **37**, 1051–1071 (2021).
 31. Poldrack, R. A. *et al.* Scanning the horizon: Towards transparent and reproducible neuroimaging research. *Nat. Rev. Neurosci.* **18**, 115–126 (2017).
 32. Lord, C. *et al.* The Autism Diagnostic Observation Schedule-Generic: A standard measure of social and communication deficits associated with the spectrum of autism. *J. Autism Dev. Disord.* **30**, 205–223 (2000).
 33. Agam, Y., Joseph, R. M., Barton, J. J. S. & Manoach, D. S. Reduced cognitive control of response inhibition by the anterior cingulate cortex in autism spectrum disorders. *Neuroimage* **52**, 336–347 (2010).
 34. Di Martino, A. *et al.* Functional Brain Correlates of Social and Nonsocial Processes in Autism Spectrum Disorders: An Activation Likelihood Estimation Meta-Analysis. *Biol. Psychiatry* **65**, 63–74 (2009).
 35. Menon, V. 20 years of the default mode network: A review and synthesis. *Neuron* **111**, 2469–2487 (2023).
 36. Nomi, J. S., Molnar-Szakacs, I. & Uddin, L. Q. Insular function in autism: Update and future directions in neuroimaging and interventions. *Prog. Neuro-Psychopharmacology Biol. Psychiatry* **89**, 412–426 (2019).
 37. Nair, S. *et al.* Local resting state functional connectivity in autism: site and cohort variability and the effect of eye status. *Brain Imaging Behav.* **12**, 168–179 (2018).
 38. Maximo, J. O., Keown, C. L., Nair, A. & Müller, R. A. Approaches to local connectivity

- in autism using resting state functional connectivity MRI. *Front. Hum. Neurosci.* **7**, 1–13 (2013).
39. Lombardo, M. V. *et al.* Atypical neural self-representation in autism. *Brain* **133**, 611–624 (2010).
40. Morita, T. *et al.* Emotional responses associated with self-face processing in individuals with autism spectrum disorders: An fMRI study. *Soc. Neurosci.* **7**, 223–239 (2012).
41. Hong, S. J. *et al.* Toward Neurosubtypes in Autism. *Biol. Psychiatry* **88**, 111–128 (2020).
42. Qi, S. *et al.* Common and unique multimodal covarying patterns in autism spectrum disorder subtypes. *Mol. Autism* **11**, 1–15 (2020).
43. Rojas, D. C. The role of glutamate and its receptors in autism and the use of glutamate receptor antagonists in treatment. *J. Neural Transm.* **121**, 891–905 (2014).
44. Zhang, S. *et al.* In vivo whole-cortex marker of excitation-inhibition ratio indexes cortical maturation and cognitive ability in youth. *Proc. Natl. Acad. Sci.* **121**, e2318641121 (2024).
45. Montanari, M., Martella, G., Bonsi, P. & Meringolo, M. Autism Spectrum Disorder: Focus on Glutamatergic Neurotransmission. *Int. J. Mol. Sci.* **23**, (2022).
46. Del Casale, A. *et al.* Neuroanatomical correlates of autism spectrum disorders: A meta-analysis of structural magnetic resonance imaging (MRI) studies. *Psychiatry Res. - Neuroimaging* **325**, 111516 (2022).
47. Minshawi, N. F. *et al.* A randomized, placebo-controlled trial of d-cycloserine for the enhancement of social skills training in autism spectrum disorders. *Mol. Autism* **7**, 1–10 (2016).

48. Urbano, M. *et al.* A trial of D-cycloserine to treat stereotypies in older adolescents and young adults with autism spectrum disorder. *Clin. Neuropharmacol.* **37**, 69–72 (2014).
49. Bove, M. *et al.* Ketamine administration in early postnatal life as a tool for mimicking Autism Spectrum Disorders core symptoms. *Prog. Neuro-Psychopharmacology Biol. Psychiatry* **117**, 110560 (2022).
50. Wink, L. K. *et al.* Brief Report: Intranasal Ketamine in Adolescents and Young Adults with Autism Spectrum Disorder—Initial Results of a Randomized, Controlled, Crossover, Pilot Study. *J. Autism Dev. Disord.* **51**, 1392–1399 (2021).
51. Yizhar, O. *et al.* Neocortical excitation/inhibition balance in information processing and social dysfunction. *Nature* **477**, 171–178 (2011).
52. Mori, T. *et al.* Evaluation of the GABAergic nervous system in autistic brain: 123I-*iomazenil* SPECT study. *Brain Dev.* **34**, 648–654 (2012).
53. Oblak, A. L., Gibbs, T. T. & Blatt, G. J. Reduced GABA_A receptors and benzodiazepine binding sites in the posterior cingulate cortex and fusiform gyrus in autism. *Brain Res.* **1380**, 218–228 (2011).
54. Kiemes, A. *et al.* GABA, Glutamate and Neural Activity: A Systematic Review With Meta-Analysis of Multimodal 1H-MRS-fMRI Studies. *Front. Psychiatry* **12**, (2021).
55. Brondino, N. *et al.* Pharmacological Modulation of GABA Function in Autism Spectrum Disorders: A Systematic Review of Human Studies. *J. Autism Dev. Disord.* **46**, 825–839 (2016).
56. Eissa, N. *et al.* Current enlightenment about etiology and pharmacological treatment of autism spectrum disorder. *Front. Neurosci.* **12**, (2018).

57. Di Martino, A. *et al.* The autism brain imaging data exchange: Towards a large-scale evaluation of the intrinsic brain architecture in autism. *Mol. Psychiatry* **19**, 659–667 (2014).
58. Di Martino, A. *et al.* Enhancing studies of the connectome in autism using the autism brain imaging data exchange II. *Sci. Data* **4**, 1–15 (2017).
59. Forsyth, A. *et al.* Modulation of simultaneously collected hemodynamic and electrophysiological functional connectivity by ketamine and midazolam. *Hum. Brain Mapp.* **41**, 1472–1494 (2020).
60. Friston, K. J. *et al.* Statistical parametric maps in functional imaging: A general linear approach. *Hum. Brain Mapp.* **2**, 189–210 (1994).
61. Whitfield-Gabrieli, S. & Nieto-Castanon, A. Conn: A Functional Connectivity Toolbox for Correlated and Anticorrelated Brain Networks. *Brain Connect.* **2**, 125–141 (2012).
62. Friston, K. J., Williams, S., Howard, R., Frackowiak, R. S. J. & Turner, R. Movement-related effects in fMRI time-series. *Magn. Reson. Med.* **35**, 346–355 (1996).
63. Aiello, M. *et al.* Relationship between simultaneously acquired resting-state regional cerebral glucose metabolism and functional MRI: A PET/MR hybrid scanner study. *Neuroimage* **113**, 111–121 (2015).
64. Kasper, J. *et al.* Local synchronicity in dopamine-rich caudate nucleus influences Huntington’s disease motor phenotype. *Brain* **146**, 3319–3330 (2023).
65. Deshpande, G., LaConte, S., Peltier, S. & Hu, X. Integrated local correlation: A new measure of local coherence in fMRI data. *Hum. Brain Mapp.* **30**, 13–23 (2009).
66. Dukart, J. *et al.* JuSpace: A tool for spatial correlation analyses of magnetic resonance

imaging data with nuclear imaging derived neurotransmitter maps. *Hum. Brain Mapp.* **42**, 555–566 (2021).

67. IBM, C. IBM SPSS Statistics for Windows. (2020).

Acknowledgments:

We thank all participants for taking part in this research. JD has received funding from the European Union's Horizon 2020 research and innovation program under grant agreement No. 826421, “TheVirtualBrain-Cloud.” SBE has received funding from the European Union's Horizon 2020 research and innovation program under grant agreement No. 945539 (Human Brain Project SGA3). ABIDE I is supported by NIMH (K23MH087770), NIMH (R03MH096321), Leon Levy Foundation, Joseph P. Healy, and the Stavros Niarchos Foundation. ABIDE II is supported by NIMH (5R21MH107045), NIMH (5R21MH107045), Nathan S. Kline Institute of Psychiatric Research, Joseph P. Healey, Phyllis Green, and Randolph Cowen.

Funding:

No funding was received for this work.

Author contributions:

Conceptualization: PG, JD

Methodology: PG, JD

Formal analysis: PG, JD

Investigation: PG, JD

Data curation: JFH, AF, SM, JD

Visualization: PG, JK, JD

Project administration: JD

Supervision: JD

Writing – original draft: PG

Writing – review & editing: JK, JFH, AF, SLV, SM, SBE, LS, JD

Competing interests:

JFH is a current and JD is a former employee of F. Hoffmann–La Roche Ltd. and received support in the form of salaries.

Data and materials availability:

All data are available in the main text or the supplementary materials.