

Title:

Mediation analyses link cardiometabolic factors and liver fat with white matter hyperintensities and cognitive performance: A UK Biobank study

Short title:

Cardiometabolic-brain link via liver mediation

Authors:

Daniel E. Askeland-Gjerde^{1,2}, Lars T. Westlye^{1,3,4}, Patrik Andersson⁵, Max Korbmacher^{6,7,8}, Ann-Marie de Lange^{3,9,10}, Dennis van der Meer^{1,11}, Olav B. Smeland¹, Sigrun Halvorsen¹², Ole A. Andreassen^{1,2,4}, Tiril P. Gurholt¹

Affiliations:

¹ Section for Precision Psychiatry, Division of Mental Health and Addiction, Oslo University Hospital, Oslo, Norway

² Institute of Clinical Medicine, University of Oslo, Oslo, Norway

³ Department of Psychology, University of Oslo, Oslo, Norway

⁴ KG Jebsen Centre for Neurodevelopmental Disorders, University of Oslo, Oslo, Norway

⁵ AMRA Medical AB, 58222 Linköping, Sweden

⁶ Neuro-SysMed Center of Excellence for Clinical Research in Neurological Diseases, Department of Neurology, Haukeland University Hospital, Bergen, Norway

⁷ Mohn Medical Imaging and Visualization Centre (MMIV), Department of Radiology, Haukeland University Hospital, Bergen, Norway

⁸ Department of Health and Functioning, Western Norway University of Applied Sciences, Bergen, Norway

NOTE: This preprint reports new research that has not been certified by peer review and should not be used to guide clinical practice.

⁹ Department of Clinical Neurosciences, Lausanne University Hospital (CHUV) and University of Lausanne, Lausanne, Switzerland

¹⁰ Department of Psychiatry, University of Oxford, Oxford, UK

¹¹ School of Mental Health and Neuroscience, Faculty of Health, Medicine and Life Sciences, Maastricht University, Maastricht, The Netherlands

¹² Department of Cardiology, Oslo University Hospital and University of Oslo, Oslo, Norway

Corresponding author: Daniel E. Askeland-Gjerde, MD, Division of Mental Health and Addiction, Oslo University Hospital, Kirkeveien 166, 0450 Oslo (d.e.askeland-gjerde@studmed.uio.no)

Keywords: Vascular cognitive impairment and dementia, cerebral small vessel disease, nonalcoholic fatty liver disease, metabolic dysfunction-associated steatotic liver disease, neurodegenerative diseases

Word counts | Abstract: 248 | Main text: 3787 | Numbers of Figures: 7 | References: 111 | Supplemental documents: 1

Abstract

Background: Liver fat is associated with cardiometabolic disease, cerebrovascular disease, and dementia. Cerebrovascular disease, most frequently cerebral small vessel disease, identified by MRI as white matter hyperintensities (WMH), often contributes to dementia. However, liver fat's role in the relationship between cardiometabolic risk, WMH, and cognitive performance is unclear.

Methods: In the UK Biobank cohort (n=32,628; 52.6% female; mean age 64.2±7.7 years; n=23,467 cognitive performance subsample), we used linear regression to investigate associations between cardiometabolic factors measured at baseline and liver fat, WMH, and cognitive performance measured at follow-up, on average, 9.3±2.0 years later. We used structural equation modeling to investigate whether liver fat mediates associations between cardiometabolic factors and WMH and whether WMH mediates associations between liver fat and cognitive performance.

Results: Nearly all cardiometabolic factors were significantly associated with liver fat ($|r|$ in [0.03,0.41], p in [1.4×10^{-8} ,0)) and WMH ($|r|$ in [0.05,0.14], p in [1.5×10^{-13} , 2.7×10^{-148}]) in regression models. Liver fat was associated with WMH ($r=0.09, p=3 \times 10^{-64}$) and cognitive performance ($r=-0.03, p=1.5 \times 10^{-7}$). Liver fat mediated the associations between cardiometabolic factors and WMH ($|\beta_{\text{mediation}}|$ in [0.01,0.03], $p_{\text{mediation}}$ in [5.7×10^{-9} ,0)) and WMH mediated the associations between liver fat and cognitive performance ($\beta_{\text{mediation}}=-0.01, p_{\text{mediation}} \approx 0$).

Conclusions: Our findings indicate that liver fat mediates associations between cardiometabolic factors and WMH and that WMH mediates the association between liver fat and cognitive performance. This suggests that liver fat might be important for understanding the effects of cardiometabolic factors on cerebrovascular disease and cognitive function.

Experimental studies are warranted to determine relevant targets for preventing vascular-driven cognitive impairment.

Introduction

Metabolic dysfunction-associated steatotic liver disease (MASLD), formerly nonalcoholic fatty liver disease (NAFLD) (1), affects 30% of adults (2) and is associated with cerebrovascular disease (3,4) and dementia (5,6). Vascular pathology, most frequently cerebral small vessel disease (CSVD) (7,8), is implicated in 50-70% of dementia cases (9–11). As MASLD (2) and dementia (12) cases are expected to increase, it is vital to understand liver fat's role in the early stages of CSVD-driven cognitive impairment, both to identify at-risk individuals and establish efficient preventive measures and treatment strategies.

MASLD is characterized by excessive fat accumulation in liver cells and one or more cardiometabolic abnormalities (13). As the diagnoses of MASLD and NAFLD are highly concordant (14–19), we use the term MASLD for both diagnoses. MASLD are associated with CSVD (20–23), identified as white matter hyperintensities (WMH) of presumed vascular origin on magnetic resonance imaging (MRI), albeit inconsistently (24–27), and prior studies have rarely used continuous liver fat measures. However, advances in rapid MRI allow for accurate liver fat quantification in large samples (28–30), facilitating novel large-scale research.

Cardiometabolic risk factors are associated with WMH (31–34) and MASLD (35–39), and both WMH and MASLD are associated with cognitive performance (40–48), though MASLD inconsistently (27,49–51). Furthermore, the associations might be sexually dimorphic as males have higher risk of MASLD (52) and CSVD (53) and females have a higher risk of dementia (54). Despite the observed associations between cardiometabolic factors, liver fat, WMH, and cognitive performance, to our knowledge no study has explicitly tested for the role of liver fat in the relationship between cardiometabolic factors, WMH, and cognitive performance. We hypothesized that (i) cardiometabolic risk factors are associated with WMH and that liver fat

mediates these associations, (ii) liver fat is associated with cognitive performance and that WMH mediate this association, and (iii) there are sex-related differences in these associations.

Methods and materials

Participant sample

This observational study used UK Biobank data (access number 27412) and was approved by the Norwegian Regional Committees for Medical and Health Research Ethics. All participants gave informed consent and could withdraw their consent (opt-out list dated April 26th, 2023). We included participants with liver and brain MRI (n=41,760), excluded participants with a history of chronic liver disease (except MASLD), malignancies of the liver, biliary tract, or central nervous system, encephalitis, myelitis, stroke, traumatic brain injury, and neurodegenerative and demyelinating disorders (n=767; **Table S1**), and excluded participants who lacked data on sex, education, anthropometric measurements, blood pressure, serum measures, smoking status, or alcohol consumption (n=8,376). The included participants (n=32,628) attended the baseline assessment between April 2007 and October 2010 and the follow-up assessment between August 2014 and April 2022 (follow-up, mean, 9.3±2.0 [range, 4.3, 14.9] years). A subsample completed cognitive testing at follow-up (n=23,467; i.e., cognitive subsample).

Liver and brain MRI

Liver and brain MRI were performed at 4 sites (Cheadle, Newcastle, Reading, and Bristol) using Siemens 1.5T MAGNETOM Aera and 3T Skyra scanners, respectively (55,56). AMRA

Researcher (AMRA Medical AB) estimated liver fat percentage (57), and the University of Oxford's Wellcome Centre for Integrative Neuroimaging estimated WMH volume with FSL BIANCA (58,59) and intracranial volume (ICV) with FreeSurfer (60).

Demographic and clinical data

From the baseline assessment, we included sex, education, ethnicity, body mass index (BMI), waist circumference, systolic blood pressure (SBP), diastolic blood pressure (DBP), high-sensitivity c-reactive protein (CRP), glycated hemoglobin (HbA1c), high-density lipoprotein (HDL) cholesterol, low-density lipoprotein (LDL) cholesterol, total cholesterol, and triglycerides. From the follow-up assessment, we included age, site, alcohol consumption, smoking status, liver fat, WMH, ICV, numeric memory, fluid intelligence, trail making test B, matrix test, symbol digit substitution, tower rearranging, paired associate learning, and pairs matching (**Table S2**). Assigned sex was gathered from NHS registers. We categorized education into higher (college or university degree), intermediate (A levels, O levels, or equivalent), and lower education (otherwise) and smoking status as current, former, and never. We calculated pulse pressure by subtracting DBP from SBP and alcohol consumption by converting total weekly and monthly alcohol consumption into grams of alcohol per week.

We classified participants with probable hypertension (blood pressure $\geq 140/90$ mmHg or antihypertensive treatment), diabetes (HbA1c ≥ 48 mmol/mol or antidiabetic treatment), or dyslipidemia (HDL cholesterol < 1.03 mmol/L, LDL cholesterol > 4.13 mmol/L, total cholesterol ≥ 6.20 mmol/L, triglycerides > 2.25 mmol/L, or lipid-lowering treatment (61)) based on clinical measurements and reported medication use (**Table S3**) in nurse-led interviews at the baseline assessment.

We also classified participants with probable steatotic liver disease based on current or former diagnostic criteria (MASLD, NAFLD, metabolic dysfunction-associated fatty liver disease (MAFLD)) as follows. Probable NAFLD: liver fat $\geq 5\%$ and alcohol consumption $< 20/30\text{g/day}$ (female/male) (62). Probable MASLD: probable NAFLD and ≥ 1 : BMI $\geq 25\text{kg/m}^2$ or $\geq 23\text{kg/m}^2$ (Asian), waist circumference $\geq 80/94\text{cm}$ (female/male) or waist circumference $\geq 80/90\text{cm}$ (Asian, female/male), blood pressure $\geq 130/85\text{mmHg}$ or antihypertensive treatment, HbA1c $\geq 39\text{mmol/mol}$ or diabetes, triglycerides $\geq 1.7\text{mmol/L}$ or lipid-lowering treatment, and HDL cholesterol $\leq 1.3/1.0\text{mmol/L}$ (female/male) or lipid-lowering treatment (63). Probable MAFLD: liver fat $\geq 5\%$, and diabetes, BMI $\geq 25\text{kg/m}^2$ or $\geq 23\text{kg/m}^2$ (Asian), or ≥ 2 : waist circumference $\geq 88/102\text{cm}$ (female/male) or waist circumference $\geq 80/90\text{cm}$ (Asian, female/male), blood pressure $\geq 130/85\text{mmHg}$ or antihypertensive treatment, HbA1c $\geq 39\text{mmol/mol}$, triglycerides $\geq 1.7\text{mmol/L}$ or lipid-lowering treatment, HDL cholesterol $< 1.3/1.0\text{mmol/L}$ (female/male) or lipid-lowering treatment, and CRP $> 2\text{mg/L}$ (64).

Cardiometabolic principal component analysis

We conducted principal component analysis (PCA) across 11 correlated cardiometabolic variables (**Figure S1**) to create uncorrelated composite measures of cardiometabolic risk. To stabilize variances (65), we log-transformed CRP and triglycerides (due to non-normal distributions; **Figures S2-S3**) and standardized the remaining variables (i.e., BMI, waist circumference, SBP, DBP, pulse pressure, HbA1c, HDL cholesterol, LDL cholesterol, and total cholesterol) by mean centering and dividing by the standard deviation. As PCA is sensitive to outliers (65), we removed values deviating > 3 standard deviations from the mean (**Table S4A**). 2,368 participants had ≥ 1 missing data point after outlier removal, but all participants had $> 50\%$

of data points and were included in the subsequent analyses. Next, we imputed missing data points with the *missMDA* R-package (66), conducted the PCA with the *prcomp* R-function, and extracted the first 3 principal components (PCs) based on their explained variance, 31.9%, 23.6%, and 17.9%, respectively (**Figure S4**). PC1's largest loadings were from SBP, DBP, and anthropometric measures (loadings in [0.37, 0.48]; **Figure S5**); PC2's from cholesterol and anthropometric measures (|loadings| in [0.19, 0.64]); and PC3's from pulse pressure, SBP, and anthropometric measures (|loadings| in [0.35, 0.50]). All PC1's loadings indicated higher cardiometabolic risk.

Cognitive principal component analysis

Vascular cognitive impairment can affect multiple cognitive domains (11). Therefore, we computed a measure of general cognitive performance using PCA across 8 cognitive tests from the follow-up assessment (**Figure S6**). We log-transformed trail making test B and pairs matching (due to non-normal distributions; **Figures S7-S8**) and standardized the remaining variables (i.e., numeric memory, fluid intelligence, matrix test, symbol digit substitution, tower rearranging, and paired associate learning). We did not include reaction time (data field 20023) as it might be lower correlated with general cognitive performance (67) and have a different genetic basis (68) and prospective memory (data field 20018) as it was a binary variable. We conducted the PCA as described above. After outlier removal (**Table S4B**), 11,579 participants had ≥ 1 missing data point. 23,467 participants had $>50\%$ data points and were included in subsequent analyses. We imputed missing data points, computed the PCA, and extracted PC1 based on its explained variance (40.7%; **Figure S9**). All cognitive tests contributed to PC1, with largest contributions from fluid intelligence, matrix test, and tower rearranging (loadings

in [0.40, 0.46]; **Figure S10**). All PC1's loadings indicated better cognitive task performance, suggesting that cognitive PC1 is a measure of general cognitive performance.

Statistical analysis

We used R version 4.2.0 (69) and R-packages *tidyverse* (70), *forcats* (71), *ggplot2* (72), *patchwork* (73), and *lavaan* (74) for analyses and data visualization. Continuous variables were assessed using histograms and quantile-quantile plots (**Figures S2-S3, S7-S8**). As residuals from linear regression analyses with liver fat, WMH, trail making test B, and pairs matching as outcomes and CRP and triglycerides as predictors were non-normal, we log-transformed these variables. Remaining continuous variables were standardized by mean-centering and dividing by the standard deviation. We used the total sample (n=32,628) for the analyses with liver fat and WMH as outcomes and the cognitive subsample (n=23,467) for the analyses with the cognitive outcome measures. We tested for sex-related differences in the total sample (**Table S5**) and differences between the total sample and cognitive subsample (**Table S6**) using t-tests and chi-squared tests.

First, we conducted multiple linear regression analyses with liver fat, WMH, and cognitive PC1 as outcomes to verify the assumptions of our planned mediation analyses. We used the cardiometabolic risk factors and cardiometabolic PC1-PC3 as predictors for all outcomes, liver fat and probable steatotic liver disease as predictors for WMH and cognitive PC1, and WMH as a predictor for cognitive PC1. Each predictor was analyzed by itself in a separate model. Next, we performed analyses with an interaction term between the predictor and sex to test for sex-related differences. For analyses with cognitive PC1 as the outcome, we conducted follow-up analyses with individual cognitive tests. The regression analyses were adjusted for age, age²,

sex, age-by-sex, age²-by-sex, site, smoking status, alcohol consumption, ICV (WMH only), and education (cognitive analyses only).

Next, we performed SEM mediation analyses (**Figure 1**) using the *sem function* in the *lavaan R-package* version 0.6-11 (74). We computed standard errors with bootstrapping using 10,000 draws. Each model consists of two regression equations and includes outcome (Y), mediator (M), predictor (X), intercepts (i), and error terms (e). Additionally, we performed sex-stratified analyses for predictors that had significant sex interactions in relevant regression analyses. We did not include interaction terms as *lavaan* does not support them (74).

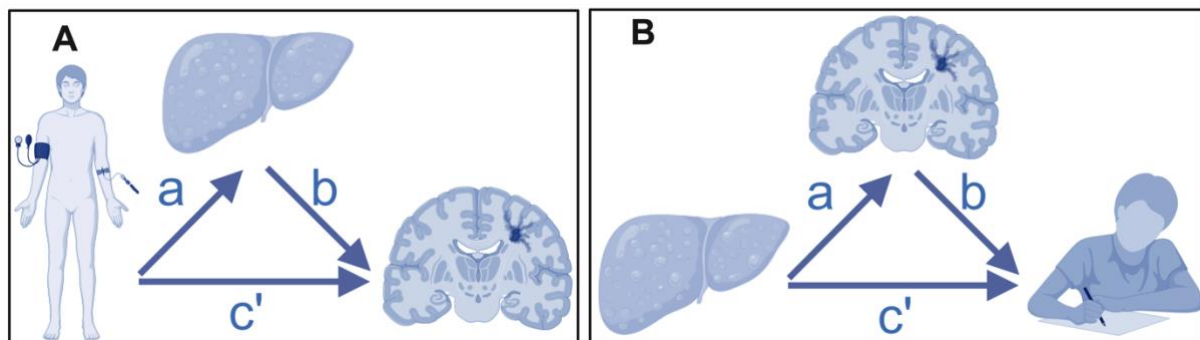


Figure 1: Path diagram of the mediation analyses. The figure shows the path diagrams of the mediation analyses with **A** white matter hyperintensities as outcome, liver fat as mediator, and cardiometabolic factors as predictors and with **B** cognitive principal component 1 as outcome, white matter hyperintensities as mediator, and liver fat and steatotic liver disease as predictors. (Created with BioRender.com.)

In the first set of mediation analyses, we used WMH as outcome, liver fat as mediator, cardiometabolic factors and cardiometabolic PC1-PC3 separately as predictors (**Figure 1A**) using the following model:

$$M_{Liver\ fat} = i_M + aX_{Cardiometabolic\ factor} + age + age^2 + sex + site + smoking\ status \\ + alcohol\ consumption + eM,$$

$$Y_{WMH} = i_Y + c'X_{Cardiometabolic\ factor} + bM_{Liver\ fat} + age + age^2 + sex + site \\ + smoking\ status + alcohol\ consumption + eY.$$

Initially, we included ICV as a covariate in the second equation. However, model fit measures were poor. After removing ICV from the equation, the models were saturated and had good model fit measures: confirmatory fit index (CFI) in [1.000, 1.000], Tucker-Lewis Index (TLI) in [1.000, 1.000], root mean square error of approximation (RMSEA) in [0.000, 0.000], and standardized root mean squared residual (SRMR) in [1.0×10^{-16} , 9.8×10^{-18}].

In the second set of mediation analyses, we used cognitive PC1 as outcome, WMH as mediator, and liver fat and probable steatotic liver disease separately as predictors (**Figure 1B**) using the following model:

$$M_{WMH} = i_M + aX_{Liver\ fat} + age + age^2 + sex + site + smoking\ status \\ + alcohol\ consumption + ICV + eM,$$

$$Y_{Cognitive\ PC1} = i_Y + c'X_{Liver\ fat} + bM_{WMH} + age + age^2 + sex + site + smoking\ status \\ + alcohol\ consumption + ICV + education + eY.$$

The fit measures were good: CFI in [0.993, 1.000], TLI in [0.918, 1.000], RMSEA in [0.034, 0.000], and SRMR in [0.001, 0.005]. We conducted equivalent follow-up mediation analyses on individual cognitive tests, with good fit measures: CFI in [0.998, 1.000], TLI in [0.975, 0.998], RMSEA in [0.007, 0.025], and SRMR in [0.002, 0.004].

We report partial correlation coefficients (r) (75) from the linear regression analyses and standardized regression coefficients (β) for direct, indirect, and total effects from the mediation analyses. We derived a study-wide Bonferroni threshold $p \leq 0.05/N = 0.05/156 = 0.0003$, where N is the number of analyses. We planned 28 (14 sex-specific), 36 (18 sex-specific), and 38 (19 sex-specific) regression analyses with liver fat, WMH, and cognitive PC1 as outcomes, respectively, and 42 (28 sex-specific) and 12 (8 sex-specific) mediation analyses with WMH and cognitive PC1 as outcomes, respectively. Follow-up analyses on individual cognitive tests were not included in the analysis count. Results are described as significant if they pass the Bonferroni threshold and we report unadjusted p-values. Since R uses double-precision values, some p-values are reported as 0, which indicate approximately equal to 0.

Results

Sample description

The sample consisted of 32,628 UK Biobank participants ($n=17,164$ (52.6%) females; **Table S5**), who were mostly middle- to late-aged (mean age 64.2 ± 7.7 years; range [48, 83]) and had completed higher (46.5%) or intermediate education (32.7%). On average, males had higher BMI (27.08 ± 3.64 vs. 26.03 ± 4.52) and liver fat (4.70 ± 4.18 vs. 3.86 ± 3.97), and higher risk of probable hypertension (53.5% vs. 36.1%), diabetes (3.1% vs. 1.5%), and dyslipidemia (61.0% vs. 46.2%). Probable steatotic liver disease prevalences varied based on the diagnostic criteria used, but males had consistently higher risk of steatotic liver diseases, probable NAFLD (20.3% vs. 15.5%), MASLD (19.8% vs. 15.0%), and MAFLD (26.8% vs. 17.0%). The cognitive subsample ($n=23,467$) had comparable demographic, clinical, and imaging data as the total sample (**Table S6**).

Cardiometabolic factors and liver fat

Multiple linear regression analyses revealed significant associations between all cardiometabolic factors and liver fat (**Figure 2AB, Table S7**). BMI, waist circumference, triglycerides, and cardiometabolic PC1 (largest loadings from anthropometric and blood pressure measurements) showed medium-to-large effects (r in [0.323, 0.407], p -values ≈ 0). The remaining variables showed small-to-medium effects ($|r|$ in [0.031, 0.269], p -values in [1.4×10^{-8} , 8.9×10^{-246}]). All variables except HDL cholesterol and PC3 (negative loadings from BMI and waist circumference) were associated with higher liver fat.

Multiple linear regression analyses revealed significant interactions between sex and BMI, DBP, CRP, LDL cholesterol, and triglycerides on liver fat (**Table S8**). An increase in BMI was associated with a steeper increase in liver fat in males than females ($r=0.028$, $p=4.5 \times 10^{-7}$), while increases in DBP, CRP, LDL cholesterol, and triglycerides were associated with a steeper increase in liver fat in females than males (r in [-0.024, -0.070], p -values in [2.2×10^{-5} , 7.7×10^{-37}]).

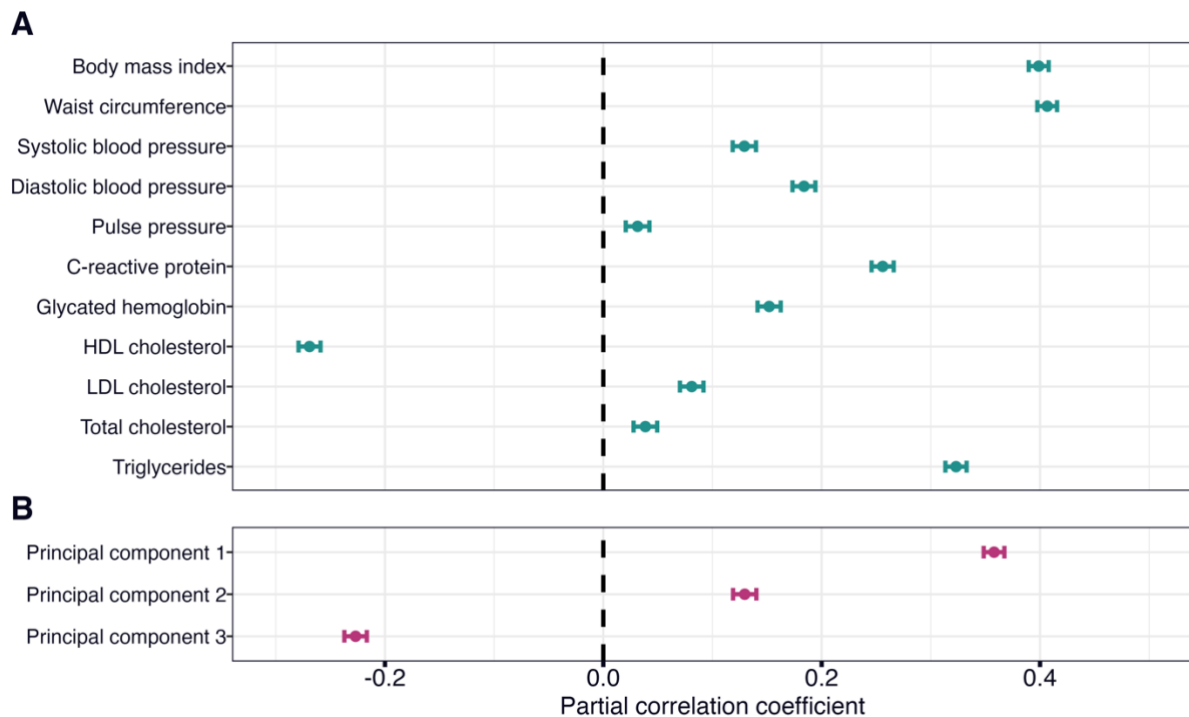


Figure 2: Linear associations between cardiometabolic factors and liver fat. The figure shows forest plots with the associations of **A** cardiometabolic risk factors and **B** cardiometabolic principal components with liver fat. The error bars correspond to 95% confidence intervals. The regression models were adjusted for age, age², sex, age-by-sex, age²-by-sex, site, smoking status, and alcohol consumption. HDL, high-density lipoprotein; LDL, low-density lipoprotein.

Cardiometabolic factors, liver fat, and white matter hyperintensities

Linear regression revealed significant associations between all cardiometabolic risk factors (except LDL cholesterol, total cholesterol, and cardiometabolic PC3) and WMH (**Figure 3AB**, **Table S9**) with small-to-medium effects (r in [0.041, 0.143], p -values in [1.5×10^{-13} , 2.7×10^{-148}]). BMI, waist circumference, SBP, DBP, and cardiometabolic PC1 had the largest effects. Liver fat and probable steatotic liver diseases were associated with higher WMH volume with small effects (r in [0.066, 0.094], p -values in [9.6×10^{-33} , 3.0×10^{-64}]; **Figure 3C**).

Linear regression analyses revealed significant interactions between sex and BMI, waist circumference, and cardiometabolic PC2 on WMH (**Table S10**). An increase in BMI, waist circumference, and cardiometabolic PC2 (largest loadings from BMI and waist circumference) was associated with a steeper increase in WMH in males than females (r in $[0.022, 0.047]$, p -values in $[7.2 \times 10^{-5}, 3.3 \times 10^{-17}]$).

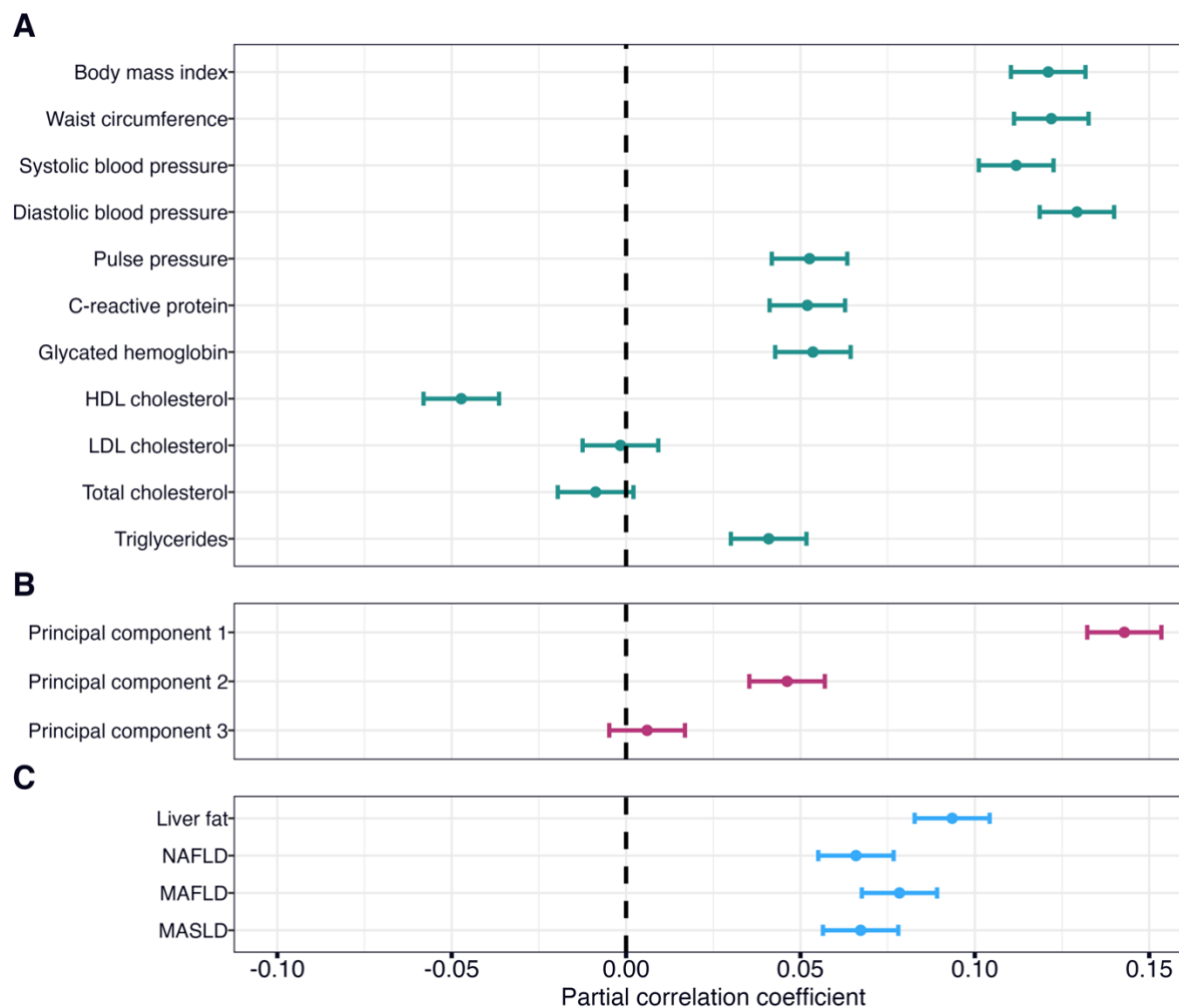


Figure 3: Linear associations between cardiometabolic factors, liver fat, and white matter hyperintensities. The figure shows forest plots with the associations of **A** cardiometabolic risk factors, **B** cardiometabolic principal components, and **C** liver fat and probable steatotic liver disease with white matter hyperintensities. The error bars correspond to 95% confidence intervals. The regression models were adjusted for age, age², sex, age-by-sex, age²-by-sex, site,

smoking status, alcohol consumption, and intracranial volume. HDL, high-density lipoprotein; LDL, low-density lipoprotein; NAFLD, nonalcoholic fatty liver disease; MAFLD, metabolic dysfunction-associated fatty liver disease; MASLD, metabolic dysfunction-associated steatotic liver disease.

Cardiometabolic factors, liver fat, white matter hyperintensities, and cognitive performance

Linear regression revealed significant associations between cognitive PC1 and BMI, SBP, DBP, HbA1c, and cardiometabolic PC1 (r in [-0.027, -0.037], p-values in [3.9×10^{-5} , 1.2×10^{-8}]; **Figure 4AB, Table S11**). Liver fat and probable steatotic liver diseases were significantly associated with cognitive PC1 (r in [-0.030, -0.034], p-values in [3.5×10^{-6} , 1.5×10^{-7}]; **Figure 4C**). Of all variables, WMH had the largest effect on cognitive PC1 (r=-0.071, p= 1.2×10^{-27} ; **Figure 4D**). None of the predictors had significant interactions with sex (**Table S12**).

In follow-up analyses on individual cognitive tests, cardiometabolic factors were significantly associated with a range of cognitive tests, most often numeric memory, matrix test, and paired associate learning (**Table S13**). Liver fat was significantly associated with all cognitive tests, except trail making test B and pairs matching. There were no significant interactions between any predictors and sex (**Table S14**).

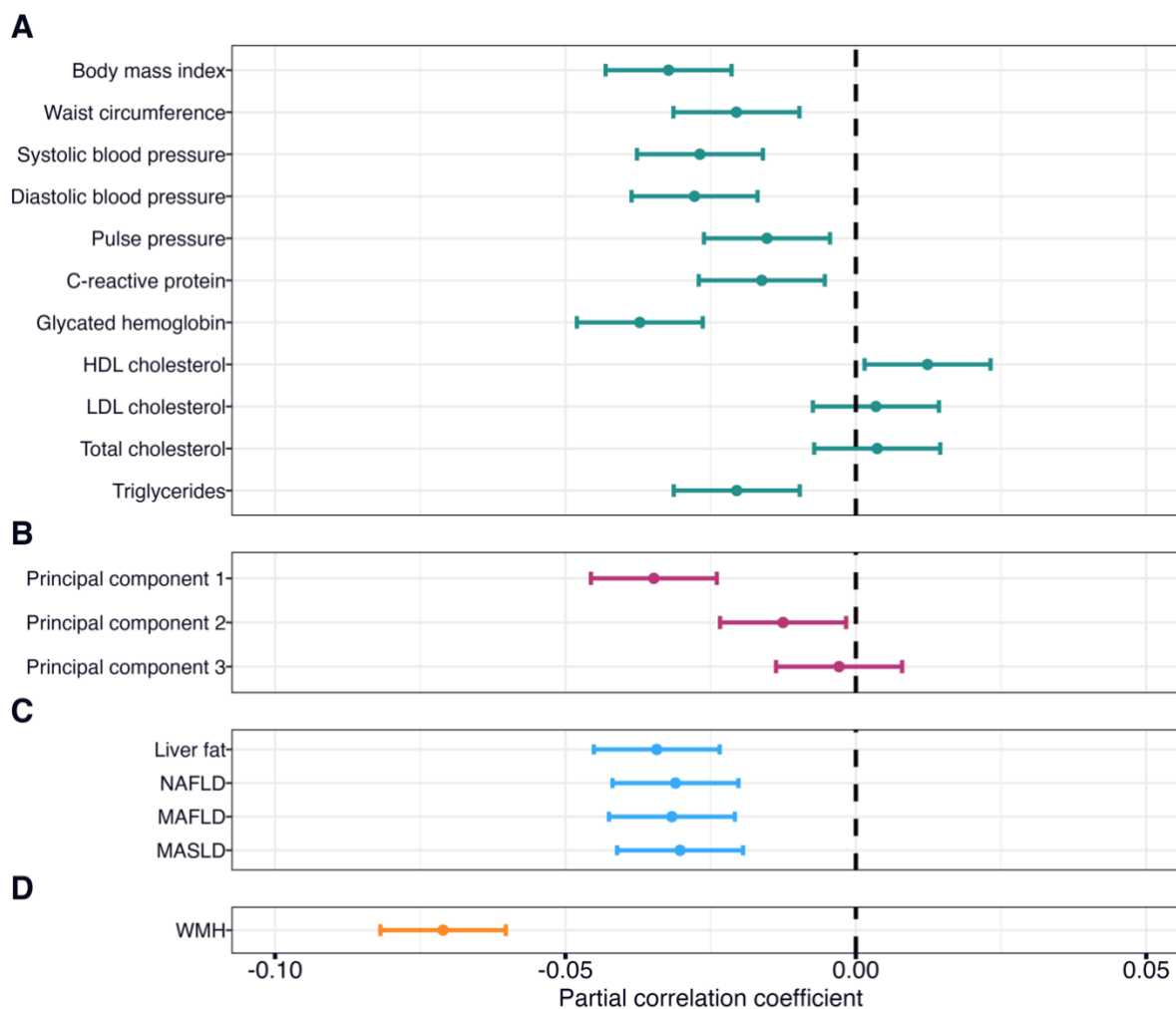


Figure 4: Linear associations between cardiometabolic factors, liver fat, WMH, and the cognitive principal component 1. The figure shows forest plots with the associations of **A** cardiometabolic risk factors, **B** cardiometabolic principal components, **C** liver fat and probable steatotic liver disease, and **D** white matter hyperintensities with cognitive principal component 1. The error bars correspond to 95% confidence intervals. The regression models were adjusted for age, age², sex, age-by-sex, age²-by-sex, site, smoking status, alcohol consumption, education, and intracranial volume (only white matter hyperintensities). HDL, high-density lipoprotein; LDL, low-density lipoprotein; NAFLD, nonalcoholic fatty liver disease; MAFLD,

metabolic dysfunction-associated fatty liver disease; MASLD, metabolic dysfunction-associated steatotic liver disease; WMH, white matter hyperintensities.

Liver fat mediates the associations between cardiometabolic factors and white matter hyperintensities

SEM mediation analyses revealed significant total and mediation (i.e., indirect) effects via liver fat on WMH for all cardiometabolic factors except LDL cholesterol, total cholesterol, and cardiometabolic PC3 (**Table S15**). BMI, waist circumference, SBP, and DBP had the largest direct effects (β in [0.086, 0.122], p-values ≈ 0 ; **Figure 5AC**), while waist circumference, HDL cholesterol, and triglycerides had the largest mediation effects ($|\beta|$ in [0.020, 0.026], p-values ≈ 0 ; **Figure 5BD**). The direct effects of HDL cholesterol and triglycerides were not significant, indicating that their associations with liver fat fully explain their associations with WMH.

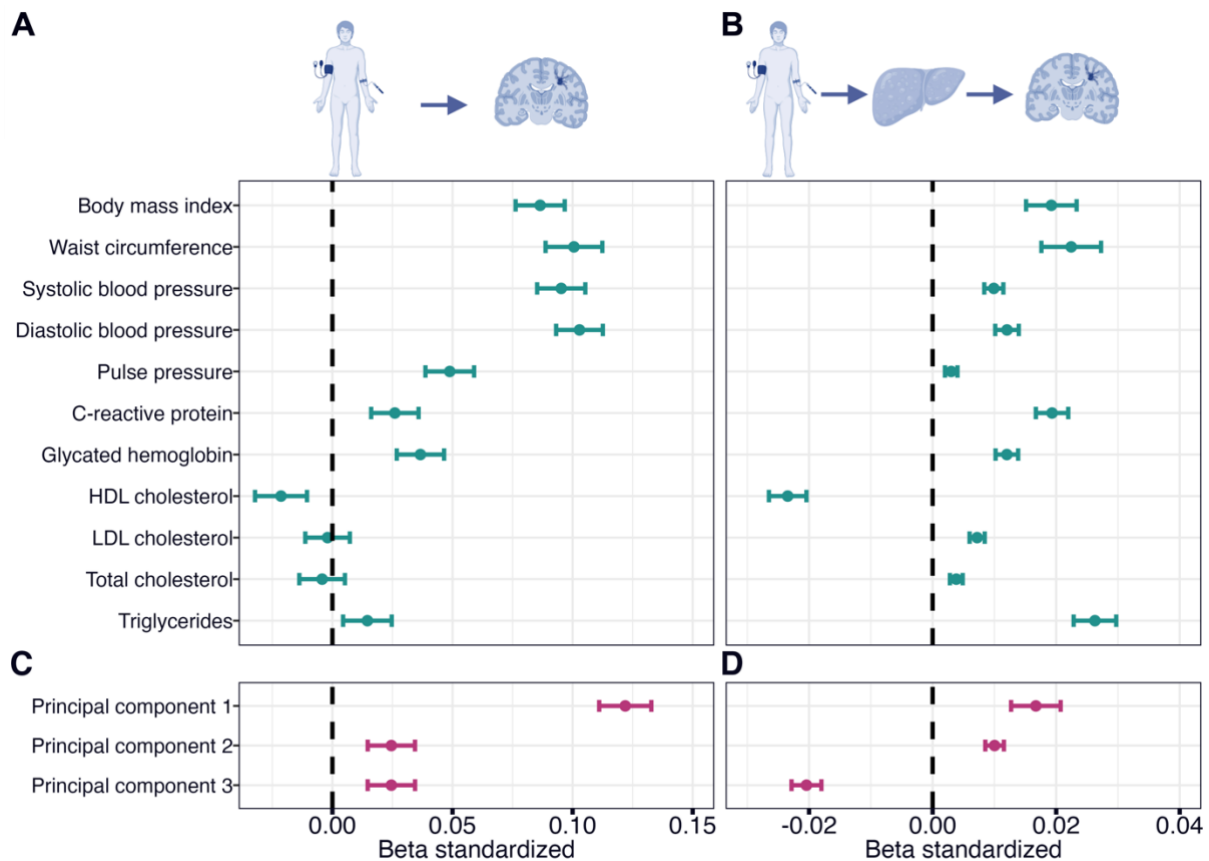


Figure 5: Mediation analyses with white matter hyperintensities as the outcome and liver fat as the mediator. The figure shows forest plots with the **A** direct and **B** mediation (i.e., indirect) effects via liver fat of cardiometabolic risk factors and the **C** direct and **D** mediation effects via liver fat of cardiometabolic principal components on white matter hyperintensities. Error bars correspond to standardized 95% confidence intervals. HDL, high-density lipoprotein; LDL, low-density lipoprotein. Illustrations created with BioRender.com.

Liver fat mediates the associations between cardiometabolic factors and white matter hyperintensities: Sex-related differences

Sex-stratified analyses (**Table S16**) revealed higher direct effects (**Figure 6A**) on WMH of BMI and waist circumference in males (β in [0.11, 0.12], p-values ≈ 0) than females ($\beta=0.07$,

p-values ≈ 0), while the mediation effects via liver fat (**Figure 6B**) were similar ($\beta=0.02$, p-values in $[3.9 \times 10^{-8}, 2.2 \times 10^{-16}]$). Furthermore, cardiometabolic PC2 (largest loadings from anthropometric and cholesterol measures) had a significant total effect on WMH in males ($\beta=0.06$, $p=2.3 \times 10^{-10}$) but not in females ($\beta=0.02$, $p=0.001$). The results indicate that the direct effects of anthropometric measures on WMH might be stronger in males than females, while the mediation effects via liver fat are similar.

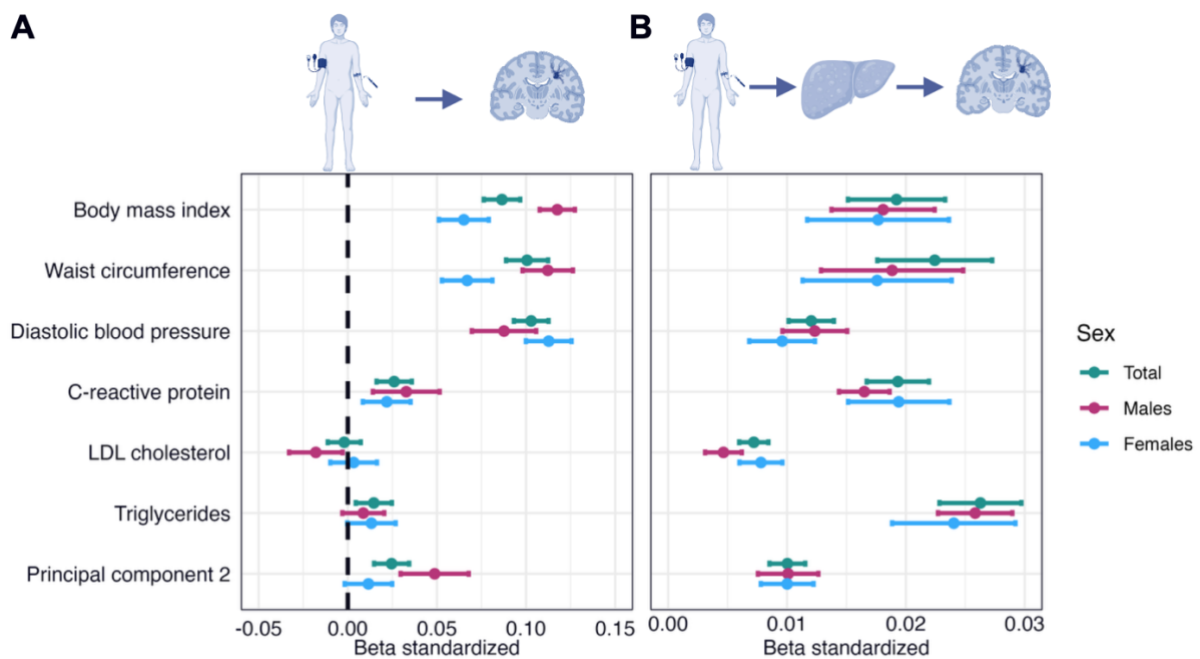


Figure 6: Mediation analyses with white matter hyperintensities as the outcome and liver fat as the mediator in the total sample and in males and females separately. The figure shows forest plots with the **A** direct and **B** mediation effects via liver fat of cardiometabolic risk factors and the **C** direct and **D** mediation effects via liver fat of cardiometabolic principal components on white matter hyperintensities. Error bars correspond to standardized 95% confidence intervals. HDL, high-density lipoprotein; LDL, low-density lipoprotein. Illustrations created with BioRender.com.

White matter hyperintensities mediate the associations of liver fat and probable steatotic liver diseases with cognitive performance

SEM mediation analyses revealed significant total and mediation effects via WMH on cognitive PC1 for both liver fat and probable steatotic liver diseases (**Table S17**). Effect sizes were comparable across predictors, for direct (β in $[-0.020, -0.021]$, p-values in $[0.0008, 0.0003]$; **Figure 7A**) and mediation (β in $[-0.004, -0.006]$, p-values in $[4 \times 10^{-14}, 0]$; **Figure 7B**) effects.

In follow-up analyses on individual cognitive tests, WMH mediated the associations between liver fat and numeric memory, symbol digit substitution, and paired associate learning (**Table S18**).

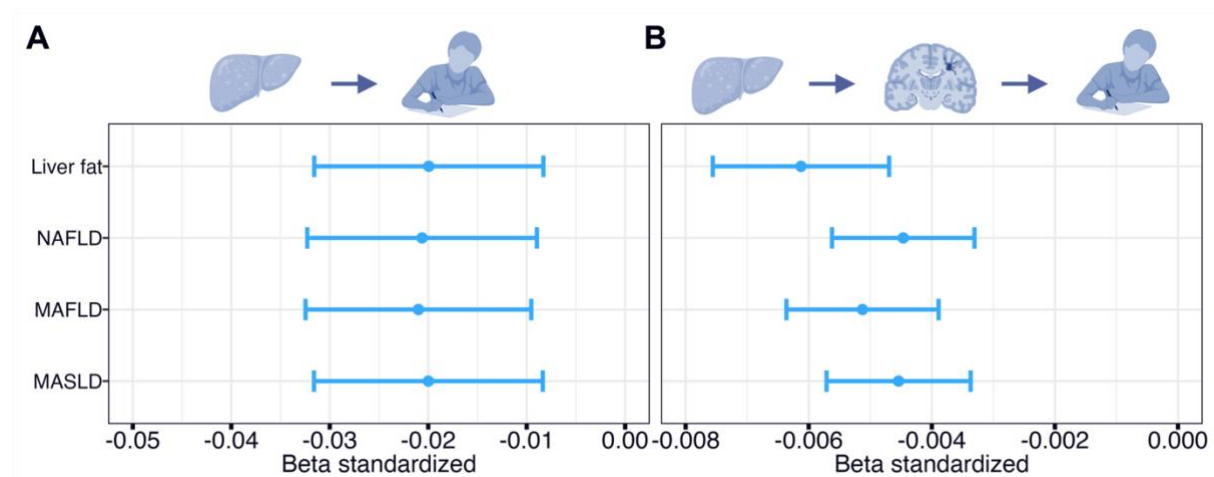


Figure 7: Mediation analyses with cognitive principal component 1 as the outcome and white matter hyperintensities as the mediator. The figure shows forest plots with the **A** direct and **B** mediation effects via WMH of liver fat and probable steatotic liver disease on cognitive principal component 1. Error bars correspond to standardized 95% confidence intervals. NAFLD, nonalcoholic fatty liver disease; MAFLD, metabolic dysfunction-associated fatty liver disease; MASLD, metabolic dysfunction-associated steatotic liver disease. Illustrations created with BioRender.com.

Discussion

In this study, we showed that liver fat mediates the associations between cardiometabolic risk factors and higher WMH and that WMH mediates the associations between higher liver fat and lower cognitive performance in middle- to late-aged participants. Furthermore, higher BMI and waist circumference might be more strongly associated with liver fat and WMH in males than in females. Our results implicate liver fat in CSVD and cognitive performance and indicate that a higher burden of WMH might partly explain the link between higher liver fat and lower cognitive performance. Liver fat might, therefore, be a relevant treatment target to prevent the development of vascular cognitive impairment.

SEM mediation analyses revealed that liver fat mediates the link between nearly all cardiometabolic factors and WMH, expanding our results from the corresponding regression analyses. Our findings align with observed associations between WMH and BMI (34), blood pressure (76–78), CRP (79), HbA1c (80,81), HDL cholesterol (82), and triglycerides (83). The link between liver fat and WMH might be explained by liver fat's association with exacerbated cardiometabolic risk (84–87) and inflammatory factors such as homocysteine (88–91). While causal interpretations remain speculative, our results implicate liver fat in the link between cardiometabolic risk and higher WMH volume.

The cardiometabolic factors BMI, waist circumference, CRP, HDL cholesterol, triglycerides, and cardiometabolic PC1 (largest loadings from anthropometric and blood pressure measures) had the overall largest mediation effects via liver fat on WMH. Additionally, the associations of HDL cholesterol and triglycerides with liver fat fully explained their associations with WMH. Our findings align with the strong links between liver fat and anthropometric measures

(36) and the hypothesis that ectopic fat (e.g., liver fat) might be more strongly associated with cerebrovascular disease than subcutaneous fat (3,4,92), and observations that liver fat might initiate inflammatory pathways (93–95), alter lipid and lipoprotein regulation (87), and contribute to higher blood pressure through higher vasoconstriction (96) and impaired peripheral vasodilation (97). Taken together, our findings might suggest that interventions aimed at general and abdominal obesity, dyslipidemia, and low-grade inflammation, could be particularly beneficial in preventing liver fat accumulation and WMH development.

In the current sample, males had higher cardiometabolic risk, liver fat, and WMH volume on average than females. Regression analyses revealed steeper increases in liver fat and WMH per increase in BMI in males, aligning with epidemiological findings in steatotic liver disease (98,99) and CSVD (53). In SEM mediation analyses, the cardiometabolic PC2, with loadings from BMI and waist circumference, was only significantly associated with WMH in males, and the direct effect sizes of BMI and waist circumference were larger in males than females, while indirect effects via liver fat were similar. We might speculate that males store less fat in the subcutis than females (100–102), leading to a harmful body fat distribution that could contribute to CSVD and possibly other brain outcomes, as similar patterns have been shown for brain age (103,104).

We show that WMH mediates the associations between lower general cognitive performance and liver fat and probable steatotic liver disease, expanding on previous observations on associations between MASLD and WMH (20–23) and cognitive performance (40–48). In follow-up analyses, we found that WMH mediates the associations between liver fat and lower performance on numeric memory, symbol digit substitution, and paired associate learning tests. These tests all contributed to the cognitive PC1 (i.e., general cognitive performance) and cover working memory, processing speed, and verbal declarative memory (67), cognitive domains

often affected by vascular cognitive impairment (11). Our findings might suggest a role of liver fat in the development of CSVD-driven cognitive decline. Improving cardiometabolic health is one of the strategies outlined to prevent dementia cases (105), and our findings suggest that lowering liver fat might also be relevant, as previously shown for thigh muscle-fat-infiltration (106). Importantly, our study demonstrates the close links between general cardiometabolic risk and liver fat. Weight loss interventions can be effective in lowering liver fat (107). However, weight loss does not always lead to MASLD improvement, especially in severe cases (108,109). Therefore, interventions for preventing liver fat accumulation in the general population are needed.

Our study has strengths and limitations. It is significantly larger than previous studies and assesses liver fat (57) and WMH (59) with accurate, quantitative methods. We used a well-characterized sample, individual and composite cardiometabolic factors, liver fat percentage and steatotic liver disease diagnoses, general cognitive performance and individual cognitive tests, and tested for sex differences. However, we only assessed WMH as it was beyond the scope of this paper to investigate other CSVD markers. UK Biobank participants are healthier, wealthier, and less ethnically diverse than the general UK population (110,111), which might limit the generalizability of our findings. Although brain MRI and cognitive testing were performed years after cardiometabolic assessment, we did not use imaging data from multiple time points. Therefore, we cannot fully exclude different directions of effects, and differently designed studies are needed to make causal claims.

Conclusion

Our findings suggest that liver fat might play a role in CSVD both directly and by mediating the associations between cardiometabolic risk factors and higher WMH volume. Higher BMI and waist circumference might be more strongly associated with liver fat and WMH in males than in females, while the link between liver fat and WMH appears to be similar in both sexes. Our results indicate links between liver fat and cognitive performance, both for general cognitive performance, working memory, processing speed, and verbal declarative memory. The associations with cognitive performance were mediated by higher WMH volume, suggesting that liver fat could contribute to the development of vascular cognitive impairment. Our findings warrant experimental studies on the underlying mechanisms and on liver fat as a potential target for preventing or delaying cognitive decline.

Data availability

The R-code used for this project is freely available on <https://github.com/deagjerde/cardiometabolic-brain-link-via-liver-mediation>.

Funding

This project has received funding from the South-Eastern Norway Regional Health Authority (#2022080), the European Union's Horizon 2020 Research and Innovation Programme (CoMorMent project #802998), the Research Council of Norway (#223273), the German Federal Ministry of Education and Research (BMBF, #01ZX1904A), the European Research Council (ERC) StG (Grant #802998), and the European Union for the Horizon Europe project 'environMENTAL' (#1010576429), with complementary funding from the UK Research and

Innovation (UKRI) under the UK government's Horizon Europe funding guarantee (10041392 and 10038599).

Acknowledgments

This research has been conducted using the UK Biobank Resource under Application Number 27412. This work uses data provided by patients and collected by the NHS as part of their care and support. We performed all data analyses on the Services for Sensitive Data (TSD), University of Oslo, Norway, with resources from UNINETT Sigma2 – the National Infrastructure for High-Performance Computing and Data Storage in Norway.

Authors contribution

DEAG: Conceptualization, Software, Formal analysis, Data curation, Writing – Original draft, Visualization. **LTW:** Resources, Writing – Review & editing, Project administration, Funding acquisition. **PA:** Resources, Writing – Review & editing. **MK:** Writing – Review & editing. **AMDL:** Writing – Review & editing, Funding acquisition. **DVDM:** Writing – Review & editing. **OBS:** Writing – Review & editing. **SH:** Conceptualization, Writing – Review & editing, Supervision. **OAA:** Conceptualization, Resources, Writing – Review & editing, Supervision, Project administration, Funding acquisition. **TPG:** Conceptualization, Software, Formal analysis, Writing – Review & editing, Visualization, Supervision, Project administration, Funding acquisition. All authors revised the manuscript and approved the final version.

Competing interests

OAA has received a speaker's honorarium from Lundbeck, Sunovion, Otsuka, and Janssen and is a consultant to Cortechs.ai. PA is employed by AMRA Medical AB. The remaining authors declare no conflict of interest.

References:

1. Rinella ME, Lazarus JV, Ratziu V, Francque SM, Sanyal AJ, Kanwal F, et al. A multisociety Delphi consensus statement on new fatty liver disease nomenclature. *J Hepatol*. 2023 Dec 1;79(6):1542–56.
2. Paik JM, Henry L, Younossi Y, Ong J, Alqahtani S, Younossi ZM. The burden of nonalcoholic fatty liver disease (NAFLD) is rapidly growing in every region of the world from 1990 to 2019. *Hepatol Commun*. 2023 Oct;7(10):e0251.
3. Xu J, Dai L, Zhang Y, Wang A, Li H, Wang Y, et al. Severity of Nonalcoholic Fatty Liver Disease and Risk of Future Ischemic Stroke Events. *Stroke*. 2021 Jan;52(1):103–10.
4. Moon JH, Jeong S, Jang H, Koo BK, Kim W. Metabolic dysfunction-associated steatotic liver disease increases the risk of incident cardiovascular disease: a nationwide cohort study. *eClinicalMedicine* [Internet]. 2023 Nov 1 [cited 2024 Oct 17];65. Available from: [https://www.thelancet.com/journals/eclinm/article/PIIS2589-5370\(23\)00469-8/fulltext](https://www.thelancet.com/journals/eclinm/article/PIIS2589-5370(23)00469-8/fulltext)
5. Kim GA, Oh CH, Kim JW, Jeong SJ, Oh IH, Lee JS, et al. Association between non-alcoholic fatty liver disease and the risk of dementia: A nationwide cohort study. *Liver Int*. 2022;42(5):1027–36.
6. Shang Y, Widman L, Hagström H. Nonalcoholic Fatty Liver Disease and Risk of Dementia: A Population-Based Cohort Study. *Neurology*. 2022 Aug 9;99(6):e574–82.
7. Wardlaw JM, Smith C, Dichgans M. Small vessel disease: mechanisms and clinical implications. *Lancet Neurol*. 2019 Jul 1;18(7):684–96.
8. Dichgans M, Leys D. Vascular Cognitive Impairment. *Circ Res*. 2017 Feb 3;120(3):573–91.
9. Schneider JA, Arvanitakis Z, Bang W, Bennett DA. Mixed brain pathologies account for most dementia cases in community-dwelling older persons. *Neurology*. 2007 Dec 11;69(24):2197–204.
10. Toledo JB, Arnold SE, Raible K, Brettschneider J, Xie SX, Grossman M, et al. Contribution of cerebrovascular disease in autopsy confirmed neurodegenerative disease cases in the National Alzheimer's Coordinating Centre. *Brain*. 2013 Sep 1;136(9):2697–706.
11. van der Flier WM, Skoog I, Schneider JA, Pantoni L, Mok V, Chen CLH, et al. Vascular cognitive impairment. *Nat Rev Dis Primer*. 2018 Feb 15;4(1):1–16.
12. Nichols E, Steinmetz JD, Vollset SE, Fukutaki K, Chalek J, Abd-Allah F, et al. Estimation of the global prevalence of dementia in 2019 and forecasted prevalence in 2050: an analysis for the Global Burden of Disease Study 2019. *Lancet Public Health*. 2022 Feb 1;7(2):e105–25.
13. Tacke F, Horn P, Wong VWS, Ratziu V, Bugianesi E, Francque S, et al. EASL–

- EASD–EASO Clinical Practice Guidelines on the management of metabolic dysfunction-associated steatotic liver disease (MASLD). *J Hepatol*. 2024 Sep 1;81(3):492–542.
14. Hagström H, Vessby J, Ekstedt M, Shang Y. 99% of patients with NAFLD meet MASLD criteria and natural history is therefore identical. *J Hepatol*. 2024 Feb 1;80(2):e76–7.
 15. Yang A, Zhu X, Zhang L, Ding Y. Transitioning from NAFLD to MAFLD and MASLD: Consistent prevalence and risk factors in a Chinese cohort. *J Hepatol*. 2024 Apr 1;80(4):e154–5.
 16. Hashida R, Nakano D, Kawaguchi M, Younossi ZM, Kawaguchi T. Changing from NAFLD to MASLD: The implications for health-related quality of life data. *J Hepatol*. 2024 Jun 1;80(6):e249–51.
 17. Perazzo H, Pacheco AG, Griep RH, Gracindo R, Goulart AC, Fonseca M de JM da. Changing from NAFLD through MAFLD to MASLD: Similar prevalence and risk factors in a large Brazilian cohort. *J Hepatol*. 2024 Feb 1;80(2):e72–4.
 18. Chen L, Tao X, Zeng M, Mi Y, Xu L. Clinical and histological features under different nomenclatures of fatty liver disease: NAFLD, MAFLD, MASLD and MetALD. *J Hepatol*. 2024 Feb 1;80(2):e64–6.
 19. Ratziu V, Boursier J, Ledinghen V de, Anty R, Costentin C, Bureau C. Confirmatory biomarker diagnostic studies are not needed when transitioning from NAFLD to MASLD. *J Hepatol*. 2024 Feb 1;80(2):e51–2.
 20. Lu Y, Pike JR, Hoogeveen R, Walker K, Raffield L, Selvin E, et al. Nonalcoholic Fatty Liver Disease and Longitudinal Change in Imaging and Plasma Biomarkers of Alzheimer Disease and Vascular Pathology. *Neurology*. 2024 Apr 9;102(7):e209203.
 21. Jang H, Kang D, Chang Y, Kim Y, Lee JS, Kim KW, et al. Non-alcoholic fatty liver disease and cerebral small vessel disease in Korean cognitively normal individuals. *Sci Rep*. 2019 Feb 12;9(1):1814.
 22. Petta S, Tuttolomondo A, Gagliardo C, Zafonte R, Brancatelli G, Cabibi D, et al. The Presence of White Matter Lesions Is Associated With the Fibrosis Severity of Nonalcoholic Fatty Liver Disease. *Medicine (Baltimore)*. 2016 Apr;95(16):e3446.
 23. McCracken C, Raisi-Estabragh Z, Veldsman M, Raman B, Dennis A, Husain M, et al. Multi-organ imaging demonstrates the heart-brain-liver axis in UK Biobank participants. *Nat Commun*. 2022 Dec 21;13(1):7839.
 24. Weinstein G, Zelber-Sagi S, Preis SR, Beiser AS, DeCarli C, Speliotes EK, et al. Association of Nonalcoholic Fatty Liver Disease With Lower Brain Volume in Healthy Middle-aged Adults in the Framingham Study. *JAMA Neurol*. 2018 Jan 1;75(1):97–104.
 25. Weinstein G, O'Donnell A, Frenzel S, Xiao T, Yaqub A, Yilmaz P, et al. Nonalcoholic fatty liver disease, liver fibrosis, and structural brain imaging: The Cross-Cohort Collaboration. *Eur J Neurol*. 2024;31(1):e16048.
 26. Jeong SM, Kwon H, Park S, Yu SJ, Jeong HY, Nam KW, et al. Favorable impact of non-alcoholic fatty liver disease on the cerebral white matter hyperintensity in a neurologically healthy population. *Eur J Neurol*. 2019;26(12):1471–8.
 27. Yilmaz P, Alferink LJM, Cremers LGM, Murad SD, Niessen WJ, Ikram MA, et al. Subclinical liver traits are associated with structural and hemodynamic brain imaging markers. *Liver Int*. 2023;43(6):1256–68.
 28. West J, Leinhard OD, Romu T, Collins R, Garratt S, Bell JD, et al. Feasibility of MR-Based Body Composition Analysis in Large Scale Population Studies. *PLOS ONE*. 2016 Sep 23;11(9):e0163332.
 29. Yokoo T, Serai SD, Pirasteh A, Bashir MR, Hamilton G, Hernando D, et al. Linearity, Bias, and Precision of Hepatic Proton Density Fat Fraction Measurements by Using MR Imaging: A Meta-Analysis. *Radiology*. 2018 Feb;286(2):486–98.
 30. Borga M, Ahlgren A, Romu T, Widholm P, Dahlqvist Leinhard O, West J.

Reproducibility and repeatability of MRI-based body composition analysis. *Magn Reson Med*. 2020;84(6):3146–56.

31. Gronewold J, Jokisch M, Schramm S, Jockwitz C, Miller T, Lehmann N, et al. Association of Blood Pressure, Its Treatment, and Treatment Efficacy With Volume of White Matter Hyperintensities in the Population-Based 1000BRAINS Study. *Hypertension*. 2021 Nov;78(5):1490–501.
32. Schneider ALC, Selvin E, Sharrett AR, Griswold M, Coresh J, Jack CR Jr, et al. Diabetes, Prediabetes, and Brain Volumes and Subclinical Cerebrovascular Disease on MRI: The Atherosclerosis Risk in Communities Neurocognitive Study (ARIC-NCS). *Diabetes Care*. 2017 Sep 15;40(11):1514–21.
33. Kim KW, Seo H, Kwak MS, Kim D. Visceral obesity is associated with white matter hyperintensity and lacunar infarct. *Int J Obes*. 2017 May;41(5):683–8.
34. Lampe L, Zhang R, Beyer F, Huhn S, Kharabian Masouleh S, Preusser S, et al. Visceral obesity relates to deep white matter hyperintensities via inflammation. *Ann Neurol*. 2019;85(2):194–203.
35. Bedogni G, Miglioli L, Masutti F, Tiribelli C, Marchesini G, Bellentani S. Prevalence of and risk factors for nonalcoholic fatty liver disease: The Dionysos nutrition and liver study. *Hepatology*. 2005;42(1):44–52.
36. Quek J, Chan KE, Wong ZY, Tan C, Tan B, Lim WH, et al. Global prevalence of non-alcoholic fatty liver disease and non-alcoholic steatohepatitis in the overweight and obese population: a systematic review and meta-analysis. *Lancet Gastroenterol Hepatol*. 2023 Jan 1;8(1):20–30.
37. Younossi ZM, Golabi P, Avila L de, Paik JM, Srishord M, Fukui N, et al. The global epidemiology of NAFLD and NASH in patients with type 2 diabetes: A systematic review and meta-analysis. *J Hepatol*. 2019 Oct 1;71(4):793–801.
38. Wei JL, Leung JCF, Loong TCW, Wong GLH, Yeung DKW, Chan RSM, et al. Prevalence and Severity of Nonalcoholic Fatty Liver Disease in Non-Obese Patients: A Population Study Using Proton-Magnetic Resonance Spectroscopy. *Off J Am Coll Gastroenterol ACG*. 2015 Sep;110(9):1306.
39. Powell EE, Wong VWS, Rinella M. Non-alcoholic fatty liver disease. *The Lancet*. 2021 Jun 5;397(10290):2212–24.
40. Seo SW, Gottesman RF, Clark JM, Hernaez R, Chang Y, Kim C, et al. Nonalcoholic fatty liver disease is associated with cognitive function in adults. *Neurology*. 2016 Mar 22;86(12):1136–42.
41. Weinstein AA, de Avila L, Paik J, Golabi P, Escheik C, Gerber L, et al. Cognitive Performance in Individuals With Non-Alcoholic Fatty Liver Disease and/or Type 2 Diabetes Mellitus. *Psychosomatics*. 2018 Nov 1;59(6):567–74.
42. Liu Q, Liu C, Hu F, Deng X, Zhang Y. Non-alcoholic Fatty Liver Disease and Longitudinal Cognitive Changes in Middle-Aged and Elderly Adults. *Front Med [Internet]*. 2022 Jan 17 [cited 2024 May 7];8. Available from: <https://www.frontiersin.org/articles/10.3389/fmed.2021.738835>
43. Filipović B, Marković O, Đurić V, Filipović B. Cognitive Changes and Brain Volume Reduction in Patients with Nonalcoholic Fatty Liver Disease. *Can J Gastroenterol Hepatol*. 2018;2018(1):9638797.
44. Celikbilek A, Celikbilek M, Bozkurt G. Cognitive assessment of patients with nonalcoholic fatty liver disease. *Eur J Gastroenterol Hepatol*. 2018 Aug;30(8):944.
45. Cushman M, Callas PW, Alexander KS, Wadley V, Zakai NA, Lidofsky SD, et al. Nonalcoholic fatty liver disease and cognitive impairment: A prospective cohort study. *PLOS ONE*. 2023 Apr 14;18(4):e0282633.
46. Kang S, Kim E, Cho H, Kim DJ, Kim HC, Jung SJ. Associations between non-

- alcoholic fatty liver disease and cognitive impairment and the effect modification of inflammation. *Sci Rep*. 2022 Jul 23;12(1):12614.
47. Tuttolomondo A, Petta S, Casuccio A, Maida C, Corte VD, Daidone M, et al. Reactive hyperemia index (RHI) and cognitive performance indexes are associated with histologic markers of liver disease in subjects with non-alcoholic fatty liver disease (NAFLD): a case control study. *Cardiovasc Diabetol*. 2018 Feb 16;17(1):28.
 48. Miao Y, Zhang B, Sun X, Ma X, Fang D, Zhang W, et al. The Presence and Severity of NAFLD are Associated With Cognitive Impairment and Hippocampal Damage. *J Clin Endocrinol Metab*. 2023 Dec 1;108(12):3239–49.
 49. Gerber Y, VanWagner LB, Yaffe K, Terry JG, Rana JS, Reis JP, et al. Non-alcoholic fatty liver disease and cognitive function in middle-aged adults: the CARDIA study. *BMC Gastroenterol*. 2021 Mar 2;21(1):96.
 50. Xiao T, Kleef LA van, Ikram MK, Knekt RJ de, Ikram MA. Association of Nonalcoholic Fatty Liver Disease and Fibrosis With Incident Dementia and Cognition: The Rotterdam Study. *Neurology*. 2022 Aug 9;99(6):e565–73.
 51. Weinstein G, Davis-Plourde K, Himali JJ, Zelber-Sagi S, Beiser AS, Seshadri S. Non-alcoholic fatty liver disease, liver fibrosis score and cognitive function in middle-aged adults: The Framingham Study. *Liver Int*. 2019;39(9):1713–21.
 52. Ji H, Cheng S, Yeo YH, Trivedi H, Reue K, Kwan A. Sex differences in prevalence and prognosis of steatotic liver disease phenotypes: Biological sex matters. *J Hepatol*. 2024 Feb 1;80(2):e68–9.
 53. Jiménez-Sánchez L, Hamilton OKL, Clancy U, Backhouse EV, Stewart CR, Stringer MS, et al. Sex Differences in Cerebral Small Vessel Disease: A Systematic Review and Meta-Analysis. *Front Neurol [Internet]*. 2021 Oct 28 [cited 2024 Sep 23];12. Available from: <https://www.frontiersin.org/journals/neurology/articles/10.3389/fneur.2021.756887/full>
 54. Gong J, Harris K, Lipnicki DM, Castro-Costa E, Lima-Costa MF, Diniz BS, et al. Sex differences in dementia risk and risk factors: Individual-participant data analysis using 21 cohorts across six continents from the COSMIC consortium. *Alzheimers Dement*. 2023;19(8):3365–78.
 55. Alfaro-Almagro F, Jenkinson M, Bangerter NK, Andersson JLR, Griffanti L, Douaud G, et al. Image processing and Quality Control for the first 10,000 brain imaging datasets from UK Biobank. *Neuroimage*. 2018 Feb 1;166:400–24.
 56. Miller KL, Alfaro-Almagro F, Bangerter NK, Thomas DL, Yacoub E, Xu J, et al. Multimodal population brain imaging in the UK Biobank prospective epidemiological study. *Nat Neurosci*. 2016 Nov;19(11):1523–36.
 57. Linge J, Borga M, West J, Tuthill T, Miller MR, Dumitriu A, et al. Body Composition Profiling in the UK Biobank Imaging Study. *Obes Silver Spring Md*. 2018 Nov;26(11):1785–95.
 58. Jenkinson M, Beckmann CF, Behrens TEJ, Woolrich MW, Smith SM. FSL. *NeuroImage*. 2012 Aug 15;62(2):782–90.
 59. Griffanti L, Zamboni G, Khan A, Li L, Bonifacio G, Sundaresan V, et al. BIANCA (Brain Intensity AbNormality Classification Algorithm): A new tool for automated segmentation of white matter hyperintensities. *NeuroImage*. 2016 Nov 1;141:191–205.
 60. Fischl B. FreeSurfer. *NeuroImage*. 2012 Aug 15;62(2):774–81.
 61. Kopin L, Lowenstein CJ. Dyslipidemia. *Ann Intern Med*. 2017 Dec 5;167(11):ITC81–96.
 62. European Association for the Study of the Liver (EASL) EA for the S of D (EASD) European Association for the Study of Obesity (EASO). EASL-EASD-EASO Clinical Practice Guidelines for the Management of Non-Alcoholic Fatty Liver Disease. *Obes Facts*. 2016 Apr 8;9(2):65–90.

63. Tacke F, Horn P, Wong VWS, Ratziu V, Bugianesi E, Francque S, et al. EASL–EASD–EASO Clinical Practice Guidelines on the management of metabolic dysfunction-associated steatotic liver disease (MASLD). *J Hepatol* [Internet]. 2024 Jun 7 [cited 2024 Aug 20];0(0). Available from: [https://www.journal-of-hepatology.eu/article/S0168-8278\(24\)00329-5/fulltext#secsectitle0030](https://www.journal-of-hepatology.eu/article/S0168-8278(24)00329-5/fulltext#secsectitle0030)
64. Eslam M, Newsome PN, Sarin SK, Anstee QM, Targher G, Romero-Gomez M, et al. A new definition for metabolic dysfunction-associated fatty liver disease: An international expert consensus statement. *J Hepatol*. 2020 Jul 1;73(1):202–9.
65. Greenacre M, Groenen PJF, Hastie T, D’Enza AI, Markos A, Tuzhilina E. Principal component analysis. *Nat Rev Methods Primer*. 2022 Dec 22;2(1):1–21.
66. Josse J, Husson F. missMDA: A Package for Handling Missing Values in Multivariate Data Analysis. *J Stat Softw*. 2016 Apr 4;70(1):1–31.
67. Fawns-Ritchie C, Deary IJ. Reliability and validity of the UK Biobank cognitive tests. *PLOS ONE*. 2020 Apr 20;15(4):e0231627.
68. Davies G, Lam M, Harris SE, Trampush JW, Luciano M, Hill WD, et al. Study of 300,486 individuals identifies 148 independent genetic loci influencing general cognitive function. *Nat Commun*. 2018 May 29;9(1):2098.
69. R Core Team (2024). *_R: A Language and Environment for Statistical Computing_*. R Foundation for Statistical Computing, Vienna, Austria. [Internet]. [cited 2024 Oct 10]. Available from: <https://www.r-project.org/>
70. Wickham H, Averick M, Bryan J, Chang W, McGowan LD, François R, et al. Welcome to the Tidyverse. *J Open Source Softw*. 2019 Nov 21;4(43):1686.
71. Wickham H (2023). *_forcats: Tools for Working with Categorical Variables (Factors)_*. R package version 1.0.0. [Internet]. [cited 2024 Oct 10]. Available from: <https://cran.r-project.org/package=forcats>
72. Wickham H. *ggplot2* [Internet]. Cham: Springer International Publishing; 2016 [cited 2024 Oct 10]. (Use R!). Available from: <http://link.springer.com/10.1007/978-3-319-24277-4>
73. Pedersen T (2024). *_patchwork: The Composer of Plots_*. R package version 1.2.0. [Internet]. [cited 2024 Oct 10]. Available from: <https://cran.r-project.org/package=patchwork>
74. Rosseel Y. lavaan: An R Package for Structural Equation Modeling. *J Stat Softw*. 2012 May 24;48(2):1–36.
75. Nakagawa S, Cuthill IC. Effect size, confidence interval and statistical significance: a practical guide for biologists. *Biol Rev*. 2007;82(4):591–605.
76. Havenon A de, Majersik JJ, Tirschwell DL, McNally JS, Stoddard G, Rost NS. Blood pressure, glycemic control, and white matter hyperintensity progression in type 2 diabetics. *Neurology*. 2019 Mar 12;92(11):e1168–75.
77. White WB, Wakefield DB, Moscufo N, Guttmann CRG, Kaplan RF, Bohannon RW, et al. Effects of Intensive Versus Standard Ambulatory Blood Pressure Control on Cerebrovascular Outcomes in Older People (INFINITY). *Circulation*. 2019 Nov 12;140(20):1626–35.
78. The SPRINT MIND Investigators for the SPRINT Research Group. Association of Intensive vs Standard Blood Pressure Control With Cerebral White Matter Lesions. *JAMA*. 2019 Aug 13;322(6):524–34.
79. Walker KA, Power MC, Hoogeveen RC, Folsom AR, Ballantyne CM, Knopman DS, et al. Midlife Systemic Inflammation, Late-Life White Matter Integrity, and Cerebral Small Vessel Disease. *Stroke*. 2017 Dec;48(12):3196–202.
80. Reitz C, Guzman VA, Narkhede A, DeCarli C, Brickman AM, Luchsinger JA. Relation of Dysglycemia to Structural Brain Changes in a Multiethnic Elderly Cohort. *J Am Geriatr Soc*. 2017;65(2):277–85.
81. Tamura Y, Kimbara Y, Yamaoka T, Sato K, Tsuboi Y, Kodera R, et al. White Matter

Hyperintensity in Elderly Patients with Diabetes Mellitus Is Associated with Cognitive Impairment, Functional Disability, and a High Glycoalbumin/Glycohemoglobin Ratio. *Front Aging Neurosci* [Internet]. 2017 Jul 6 [cited 2024 Jul 25];9. Available from:

<https://www.frontiersin.org/journals/aging-neuroscience/articles/10.3389/fnagi.2017.00220/full>

82. Dickie DA, Ritchie SJ, Cox SR, Sakka E, Royle NA, Aribisala BS, et al. Vascular risk factors and progression of white matter hyperintensities in the Lothian Birth Cohort 1936. *Neurobiol Aging*. 2016 Jun 1;42:116–23.
83. Schilling S, Tzourio C, Dufouil C, Zhu Y, Berr C, Alperovitch A, et al. Plasma lipids and cerebral small vessel disease. *Neurology*. 2014 Nov 11;83(20):1844–52.
84. Ciardullo S, Grassi G, Mancina G, Perseghin G. Nonalcoholic fatty liver disease and risk of incident hypertension: a systematic review and meta-analysis. *Eur J Gastroenterol Hepatol*. 2022 Apr;34(4):365.
85. Ballestri S, Zona S, Targher G, Romagnoli D, Baldelli E, Nascimbeni F, et al. Nonalcoholic fatty liver disease is associated with an almost twofold increased risk of incident type 2 diabetes and metabolic syndrome. Evidence from a systematic review and meta-analysis. *J Gastroenterol Hepatol*. 2016;31(5):936–44.
86. Mantovani A, Petracca G, Beatrice G, Tilg H, Byrne CD, Targher G. Non-alcoholic fatty liver disease and risk of incident diabetes mellitus: an updated meta-analysis of 501 022 adult individuals. *Gut*. 2021 May 1;70(5):962–9.
87. Bril F, Sninsky JJ, Baca AM, Superko HR, Portillo Sanchez P, Biernacki D, et al. Hepatic Steatosis and Insulin Resistance, But Not Steatohepatitis, Promote Atherogenic Dyslipidemia in NAFLD. *J Clin Endocrinol Metab*. 2016 Feb 1;101(2):644–52.
88. Kloppenborg RP, Geerlings MI, Visseren FL, Mali WPTM, Vermeulen M, van der Graaf Y, et al. Homocysteine and progression of generalized small-vessel disease. *Neurology*. 2014 Mar 4;82(9):777–83.
89. Kloppenborg RP, Nederkoorn PJ, van der Graaf Y, Geerlings MI. Homocysteine and cerebral small vessel disease in patients with symptomatic atherosclerotic disease. The SMART-MR study. *Atherosclerosis*. 2011 Jun 1;216(2):461–6.
90. Nam KW, Kwon HM, Jeong HY, Park JH, Kwon H, Jeong SM. Serum homocysteine level is related to cerebral small vessel disease in a healthy population. *Neurology*. 2019 Jan 22;92(4):e317–25.
91. Leach NV, Dronca E, Vesa SC, Sampelean DP, Craciun EC, Lupsor M, et al. Serum homocysteine levels, oxidative stress and cardiovascular risk in non-alcoholic steatohepatitis. *Eur J Intern Med*. 2014 Oct 1;25(8):762–7.
92. Horn JW, Feng T, Mørkedal B, Strand LB, Horn J, Mukamal K, et al. Obesity and Risk for First Ischemic Stroke Depends on Metabolic Syndrome: The HUNT Study. *Stroke*. 2021 Nov;52(11):3555–61.
93. Sookoian S, Castaño GO, Burgueño AL, Rosselli MS, Gianotti TF, Mallardi P, et al. Circulating levels and hepatic expression of molecular mediators of atherosclerosis in nonalcoholic fatty liver disease. *Atherosclerosis*. 2010 Apr 1;209(2):585–91.
94. Simons N, Bijnen M, Wouters KAM, Rensen SS, Beulens JWJ, van Greevenbroek MMJ, et al. The endothelial function biomarker soluble E-selectin is associated with nonalcoholic fatty liver disease. *Liver Int*. 2020;40(5):1079–88.
95. Fricker ZP, Pedley A, Massaro JM, Vasani RS, Hoffmann U, Benjamin EJ, et al. Liver Fat Is Associated With Markers of Inflammation and Oxidative Stress in Analysis of Data From the Framingham Heart Study. *Clin Gastroenterol Hepatol*. 2019 May 1;17(6):1157–1164.e4.
96. Zhao YC, Zhao GJ, Chen Z, She ZG, Cai J, Li H. Nonalcoholic Fatty Liver Disease. *Hypertension*. 2020 Feb;75(2):275–84.

97. Long MT, Wang N, Larson MG, Mitchell GF, Palmisano J, Vasani RS, et al. Nonalcoholic Fatty Liver Disease and Vascular Function: Cross-Sectional Analysis in the Framingham Heart Study. *Arterioscler Thromb Vasc Biol.* 2015 May;35(5):1284–91.
98. Lefebvre P, Staels B. Hepatic sexual dimorphism — implications for non-alcoholic fatty liver disease. *Nat Rev Endocrinol.* 2021 Nov;17(11):662–70.
99. Westerbacka J, Cornér A, Tiikkainen M, Tamminen M, Vehkavaara S, Häkkinen AM, et al. Women and men have similar amounts of liver and intra-abdominal fat, despite more subcutaneous fat in women: implications for sex differences in markers of cardiovascular risk. *Diabetologia.* 2004 Aug 1;47(8):1360–9.
100. Gerds E, Regitz-Zagrosek V. Sex differences in cardiometabolic disorders. *Nat Med.* 2019 Nov;25(11):1657–66.
101. Goossens GH, Jocken JWE, Blaak EE. Sexual dimorphism in cardiometabolic health: the role of adipose tissue, muscle and liver. *Nat Rev Endocrinol.* 2021 Jan;17(1):47–66.
102. Goossens GH. The role of adipose tissue dysfunction in the pathogenesis of obesity-related insulin resistance. *Physiol Behav.* 2008 May 23;94(2):206–18.
103. Subramaniapillai S, Suri S, Barth C, Maximov II, Voldsbeek I, van der Meer D, et al. Sex- and age-specific associations between cardiometabolic risk and white matter brain age in the UK Biobank cohort. *Hum Brain Mapp.* 2022;43(12):3759–74.
104. Subramaniapillai S, Schindler LS, Redmond P, Bastin ME, Wardlaw JM, Valdés Hernández M, et al. Sex-Dependent Effects of Cardiometabolic Health and APOE4 on Brain Age. *Neurology.* 2024 Sep 24;103(6):e209744.
105. Livingston G, Huntley J, Sommerlad A, Ames D, Ballard C, Banerjee S, et al. Dementia prevention, intervention, and care: 2020 report of the Lancet Commission. *The Lancet.* 2020 Aug 8;396(10248):413–46.
106. Gurholt TP, Borda MG, Parker N, Forminykh V, Kjelkenes R, Linge J, et al. Linking sarcopenia, brain structure, and cognitive performance: a large-scale UK Biobank study. *Brain Commun.* 2024 Mar 7;fcae083.
107. Sanyal AJ, Van Natta ML, Clark J, Neuschwander-Tetri BA, Diehl A, Dasarthy S, et al. Prospective Study of Outcomes in Adults with Nonalcoholic Fatty Liver Disease. *N Engl J Med.* 2021 Oct 21;385(17):1559–69.
108. Loomba R, Abdelmalek MF, Armstrong MJ, Jara M, Kjær MS, Krarup N, et al. Semaglutide 2.4 mg once weekly in patients with non-alcoholic steatohepatitis-related cirrhosis: a randomised, placebo-controlled phase 2 trial. *Lancet Gastroenterol Hepatol.* 2023 Jun 1;8(6):511–22.
109. Loomba R, Hartman ML, Lawitz EJ, Vuppalanchi R, Boursier J, Bugianesi E, et al. Tirzepatide for Metabolic Dysfunction–Associated Steatohepatitis with Liver Fibrosis. *N Engl J Med.* 2024 Jul 24;391(4):299–310.
110. Fry A, Littlejohns TJ, Sudlow C, Doherty N, Adamska L, Sprosen T, et al. Comparison of Sociodemographic and Health-Related Characteristics of UK Biobank Participants With Those of the General Population. *Am J Epidemiol.* 2017 Nov 1;186(9):1026–34.
111. Lyall DM, Quinn T, Lyall LM, Ward J, Anderson JJ, Smith DJ, et al. Quantifying bias in psychological and physical health in the UK Biobank imaging sub-sample. *Brain Commun.* 2022 Jun 1;4(3):fcac119.