

Depression and Prefrontal-Hippocampal Pathway

1 Depression and the Prefrontal-Hippocampal Pathway - A Pilot 2 Multimodal Neuroimaging Study in Transgender Women

3 Setthanan Jarukasemkit^{1,2,3}, MD, Karen M. Tam¹, Seksan Yoadsanit¹, Ty Easley², Hailey Modi²,
4 Lyn Stahl², Adun Kampaengtip¹, MSc, Thanissara Chansakul¹, MD, Rena Janamnuaysook^{4,5},
5 MBA, Akarin Hiransuthikul, MD^{4,6}, Chaipat Chunharas*³, MD, PhD and Janine D.
6 Bijsterbosch*², PhD.

7 (1) Faculty of Medicine Ramathibodi Hospital, Mahidol University, Bangkok Thailand.

8 (2) Personomics Lab, Department of Radiology, Washington University School of Medicine, Saint Louis, Missouri, USA.

9 (3) Cognitive Clinical and Computational Neuroscience (CCCN) Center of Excellence, Chulalongkorn University, Bangkok, Thailand.

10 (4) Institute of HIV Research and Innovation (IHRI), Bangkok, Thailand.

11 (5) Center of Excellence in Transgender Health, Chulalongkorn University, Bangkok, Thailand.

12 (6) Department of Preventive and Social Medicine, Faculty of Medicine, Chulalongkorn University, Bangkok, Thailand.

13 * joint last authors.

14 Co-correspondence:

15 **Chaipat Chunharas, MD, PhD**

16 Department of Neurology, Faculty of Medicine, Chulalongkorn University, Bangkok, Thailand.

17 Address: 1873 Ratchadamri Rd., Pathum Wan, Bangkok 10330, Thailand

18 Phone: +66 89 777 9493, Email: chaipat.c@chula.ac.th

19 **Janine D. Bijsterbosch, PhD**

20 Department of Radiology, Washington University in St. Louis, Missouri, United States

21 Address: 4525 Scott Avenue, St. Louis, MO 63110, USA

22 Phone: +1 314 629 3344, Email: janine.bijsterbosch@wustl.edu

23 **Keywords:** Depression; Transgender women; Neuroimaging; Spectroscopy; fMRI

24 Abstract word counts: 91; Main text word counts: 1827; Number of figures: 3; Number of tables:

25 0; Number of supplemental documents: 4.

Depression and Prefrontal-Hippocampal Pathway

26 **Abstract**

27 This pilot study explored associations between gamma-aminobutyric acid (GABA) spectroscopy
28 and functional magnetic resonance imaging in transgender women with depression. Twenty
29 participants completed mental health surveys and imaging between January and March 2024.
30 Depression severity was measured by Patient Health Questionnaire-9 (PHQ-9) scores. Higher
31 PHQ-9 scores were associated with lower GABA levels in the hippocampus and lower fractional
32 amplitude of low-frequency fluctuations (fALFF) in the dorsolateral prefrontal cortex. These
33 findings revealed interactions between neurotransmitter signaling and functional brain activity of
34 the hippocampal-prefrontal circuit in depression. Future large-scale neuroimaging studies are
35 needed.

Depression and Prefrontal-Hippocampal Pathway

36 **Introduction**

37 The transgender population experiences higher rates of depression compared to the cisgender
38 population, with estimates in Thailand reaching around 22.7% for the transgender community
39 compared to 3.2% in the overall population.¹ Despite this high prevalence, transgender
40 individuals are not typically represented in neuroimaging research projects aimed at elucidating
41 the brain basis of depression. More broadly, there is a problematic lack of diversity in
42 neuroimaging research, which largely focuses on cisgender participants from Western, Educated,
43 Industrialized, Rich, and Democratic (WEIRD) countries.²

44

45 In this pilot study, we focused on two key brain regions implicated in depression, namely the
46 hippocampus and the dorsolateral prefrontal cortex (DLPFC). Self-referential processes such as
47 rumination, a key symptom of depression, have been associated with hippocampal hyperactivity,
48 and hippocampal atrophy is commonly observed in recurrent depression.^{3,4} Furthermore,
49 repetitive transcranial magnetic stimulation (TMS) applied to the left DLPFC has shown
50 significant effectiveness in treating depression.⁵ As such, the hippocampal-prefrontal circuit is of
51 key interest in the context of depression.

52

53 A hierarchical model proposed by Hasler and Northoff has suggested that non-invasive
54 measurement of cerebral gamma-aminobutyric acid (GABA) concentrations may offer
55 endophenotypic insights into inhibitory pathways relevant to depression.⁶ A recent multimodal
56 neuroimaging study showed that hippocampal GABA was necessary to recruit DLPFC activation
57 in a task context that required suppression of unwanted thoughts.⁷ Despite the importance of the
58 prefrontal-hippocampal circuit in cognitive and emotional regulation, its specific relationship
59 with depression measurements remains poorly understood. To address these challenges with
60 limited transgender representation in neuroimaging depression research and to elucidate the role
61 of the prefrontal-hippocampal circuit in depression, the goal of this study was to investigate the
62 prefrontal-hippocampal pathway of depression in a non-WEIRD cohort of transgender women.

Depression and Prefrontal-Hippocampal Pathway

63 **Material and Method**

64 *Patients and Data Collection*

65 Twenty transgender women with mild-to-severe depression were recruited from the Tangerine
66 Community Health Clinic, a specialized healthcare center for transgender people in Bangkok,
67 Thailand.⁸ Recruitment and data collection took place between January and March 2024. Mild-
68 to-severe depression was defined based on Patient Health Questionnaire (PHQ-9) scores greater
69 than 5 and a neuroticism score on the Five-Factor Inventory (NEO-FFI) greater than 30.1 which
70 was previously defined as one standard deviation above the population mean.^{9,10} Exclusion
71 criteria comprised any history of neurological or cognitive disorders and contraindications for
72 magnetic resonance imaging (MRI) scanning. See Supplementary Table S1 for a detailed
73 overview of inclusion and exclusion criteria. Of the twenty subjects recruited, half were
74 currently participating in gender-affirming hormone therapy (GAHT).

75

76 This study was approved by the Institutional Review Board, Faculty of Medicine Ramathibodi
77 Hospital, Mahidol University (COA. MURA2023/522). After obtaining informed consent,
78 participants completed a series of mental health questionnaire assessments followed by a one-
79 hour MRI session at the Advanced Imaging Diagnostic Center, Faculty of Medicine Ramathibodi
80 Hospital, Bangkok, Thailand. For the mental health assessments used in this manuscript,
81 participants performed Thai language versions of the PHQ-9 and NEO-FFI self-report
82 questionnaires on paper prior to the MRI scanning session.^{9,10}

83

84 *Neuroimaging Acquisition and Preprocessing*

85 The MRI session included T1-weighted and T2-weighted structural MRI, resting-state functional
86 MRI (rs-fMRI), and GABA magnetic resonance spectroscopy (MRS) imaging, using a Philips
87 Ingenia Elition 3.0T scanner (software version R5.7.1). We leveraged a state-of the-art imaging
88 protocol informed by the Human Connectome Project Lifespan and Disease protocols, and the
89 MRS utilized the MEGA-PRESS sequence with parameters based on standard guidelines.¹¹ For
90 more details, the neuroimaging acquisition parameters are listed in Supplementary Table S2.

Depression and Prefrontal-Hippocampal Pathway

91

92 Functional imaging data were preprocessed by FMRIB's Software Library (FSL) software.
93 Briefly, the preprocessing steps included motion correction, distortion correction, structural co-
94 registration, spatial normalization to Montreal Neurological Institute space using nonlinear
95 registration, smoothing with a 5 millimeter kernel, and noise correction with independent
96 component analysis. The distortion correction of echo planar imaging (EPI) of rs-fMRI was
97 performed utilizing a technique that leverages two different phase encoding directions.¹²
98 Specifically, FSL's topup tool estimated distortion fields from opposite phase-encoded EPI
99 images, and the estimated fields were applied for geometric correction. Please see the
100 Supplementary Methods for further detail. Additional cleanup of rs-fMRI data was performed
101 using independent component analysis noise removal by FSL AROMA.

102

103 For MRS images, signals obtained from the left DLPFC, and left hippocampus were processed
104 with baseline initial peak subtraction with 90% Gaussian character for fitting the power
105 spectrum. MEGA Subtract All (ON-OFF) Spectra was performed. Please see the Supplementary
106 Methods for further detail.

107

108 *Data Analysis*

109 The study utilized neuroimaging parameters focused on two regions of interest: the hippocampus
110 and the DLPFC. For the functional analyses, the bilateral hippocampus was defined based on the
111 Harvard/Oxford Subcortical atlas and the bilateral DLPFC was defined based on prior work that
112 utilized a task fMRI localizer (Figure 1).¹³ We extracted the mean time series of the left and right
113 hippocampus and DLPFC following preprocessing and estimated the fractional amplitude of
114 low-frequency fluctuation (fALFF). This measure captures the normalized strength of
115 spontaneous signal fluctuations in each brain region by calculating the ratio of the power in the
116 low-frequency range (0.01-0.1 Hertz) to the power across the full frequency range.¹⁴
117 Subsequently, the fALFF estimates were averaged between left and right hippocampus and
118 between left and right DLPFC before further analysis.

Depression and Prefrontal-Hippocampal Pathway

119

120 For the spectroscopy data, GABA concentrations were normalized to creatinine concentrations
121 (GABA/Cr) using creatinine as a stable reference metabolite. Notably, hippocampal spectroscopy
122 can be challenging due to the small size of the hippocampus, which can lead to low spectral
123 resolution and a low signal-to-noise ratio.¹⁵ To address this concern, we followed prior advice on
124 the minimum voxel volume while also preserving spatial specificity for the regions of interest.¹¹
125 Furthermore, we controlled for motion-related noise by including the framewise displacement
126 parameter from rs-fMRI as a confound in subsequent analyses.

127

128 Following the extraction of neuroimaging parameters, multiple univariate linear regressions were
129 performed using the ordinary least squares method. In these analyses, multimodal neuroimaging
130 measures served as the independent variables, PHQ-9 scores were included as the dependent
131 variables, and framewise displacement was included as a control variable. Mediation analyses
132 were also conducted to investigate whether DLPFC fALFF mediated the relationship between
133 hippocampal GABA and depression severity as measured with PHQ-9 scores. Additionally, an
134 unpaired t-test was performed to investigate differences in neuroimaging measures and PHQ-9
135 scores between the GAHT and non-GAHT groups using permutation testing. Equations for all
136 regression and mediation models can be found in the Supplementary Material.

137

138 **Results**

139 The study consisted of 20 transgender women with mean age (standard deviation) of 30.1 (\pm 6.5)
140 years. The mean neuroticism score (NEO-FFI) was 45.55 (\pm 7.5), and the mean PHQ-9 score was
141 14.6 (\pm 5.73), indicating the mental health status of the sample. Nearly half of the participants
142 (45%) were undergoing gender-affirming hormone therapy at the time of the study. The linear
143 regression models revealed a significant negative association between hippocampal GABA and
144 PHQ-9 scores (β = -0.48, p = 0.039; Figure 2A), such that higher depression severity was
145 associated with decreased hippocampal GABA. Furthermore, our findings revealed a significant
146 negative association between DLPFC fALFF and PHQ-9 scores (β = -0.54, p = 0.015; Figure
147 2B), such that higher depression severity was associated with decreased fALFF in the DLPFC.

Depression and Prefrontal-Hippocampal Pathway

148 No significant associations were observed between PHQ-9 scores and either hippocampal fALFF
149 or DLPFC GABA.

150

151 Figure 3 illustrates the results from the mediation analysis model. We observed a trend-level
152 mediating effect of DLPFC fALFF on the relationship between hippocampal GABA and PHQ-9
153 scores. Specifically, the results showed a significant relationship between hippocampal GABA
154 and DLPFC fALFF ($\beta = 0.48$, $p = 0.037$) with a trend-level mediation effect ($\beta = -0.20$, $p =$
155 0.060).

156

157 We did not observe a significant difference between GAHT groups on PHQ-9 scores or on any of
158 the neuroimaging measurements. Although prior work has shown a decrease in mental health
159 symptomatology following GAHT, the lack of group differences in our study is explained by our
160 inclusion criteria which required the presence of depressive symptoms to enable the investigation
161 of the neural correlations of depression.¹⁶

Depression and Prefrontal-Hippocampal Pathway

162 **Discussion**

163 This pilot study aimed to investigate the multimodal prefrontal-hippocampal circuit in relation to
164 depression in a transgender cohort. Our findings revealed negative associations between
165 depression severity and hippocampal GABA, and negative associations between depression
166 severity and the amplitude of functional fluctuations in the DLPFC. These findings on the fronto-
167 hippocampal relationship in depression are consistent with previous research in cisgender
168 subjects, where higher hippocampal GABA was shown to recruit the DLPFC in an unwanted
169 thought suppression task, indicating that DLPFC top-down signaling may depend on
170 hippocampal GABA.⁷ Moreover, lower hippocampal GABA may be indicative of impaired
171 inhibitory signaling, which could contribute to hippocampal hyperactivity.^{3,17}

172
173 Hypoactivity of the DLPFC has previously been observed in major depressive disorder patients
174 and in peripartum and post-stroke depression.^{18,19,20} Given the DLPFC's pivotal role in cognitive
175 control and emotion regulation, prior work has suggested that left DLPFC fALFF could serve as
176 a biomarker to predict treatment responses to escitalopram and TMS intervention.^{21,22} Although
177 GABA depletion is commonly observed in depression, GABA also plays critical roles in
178 regulating neurochemical processes, including the hypothalamus-pituitary-adrenal axis and
179 neurosteroid homeostasis.²³ Disruption of GABA signaling in postpartum depression and
180 premenstrual dysphoria may suggest abnormal neurochemical responses to hormonal
181 fluctuations, particularly those driven by estradiol.^{24,25} As such, this link between estradiol and
182 GABA may be of interest for future research on interactions between GAHT and depression in
183 the transgender community.

184
185 Additionally, our study supports the Hasler & Northoff depression model, which links
186 neurotransmitter imbalances, particularly in GABAergic signaling, to functional
187 dysconnectivity.⁶ However, further research is required to explore all potential pathways within
188 this model, including other circuitry like limbic and salience networks and other relevant
189 neurotransmitters such as serotonin and dopamine. The findings of this pilot study provide

Depression and Prefrontal-Hippocampal Pathway

190 preliminary validation for the potential use of GABA MRS in tracking symptom severity in this
191 underrepresented population.

192

193 Although we were underpowered to detect differences linked to GAHT, GAHT has been shown
194 to reduce the risk of depression in the transgender population and has previously been associated
195 with lower odds of both depression and suicidality.¹⁶ These prior GAHT findings underscore the
196 potential mediating role of hormone therapy in mitigating depression risk in the transgender
197 population. Large-scale neuroimaging studies in transgender cohorts will be crucial to further
198 understand the relationship between GAHT (and sex hormones more broadly) and neural
199 circuitry dysfunction in depression.

200

201 *Limitation*

202 The pilot study was limited in statistical power due to the relatively small sample size. As a
203 result, we performed focused analyses on two brain regions (the hippocampus and DLPFC).
204 Future large-scale multimodal neuroimaging studies that are sufficiently powered to interrogate a
205 larger number of relationships in a broader neural circuitry are essential to address the
206 complexities inherent in hierarchical models of depression.

207

208 **Conclusion**

209 We investigated the prefrontal-hippocampal circuit in relation to depression in a transgender
210 cohort using multimodal neuroimaging data. Our results revealed that higher depression severity
211 was associated with reduced hippocampal GABA and with reduced DLPFC fALFF. Larger scale
212 neuroimaging studies are needed to further study the brain basis of depression in the transgender
213 community and the potential impact of GAHT on depression-related neural pathways.

Depression and Prefrontal-Hippocampal Pathway

214 **Author's Contributions**

215 The authors made the following contributions to this manuscript:

216 Conceptualization: SJ, TE, RJ, AH, CC, JDB;

217 Data curation: SJ, AK, TC;

218 Funding acquisition: SJ, TC;

219 Investigation: SJ, KMT, SY, TC;

220 Project administration: SJ;

221 Methodology: SJ, CC, JDB;

222 Validation: CC, JDB;

223 Software: CC, JDB;

224 Writing – original draft: SJ, CC, JDB;

225 Writing – review and editing: SJ, TE, HM, LS, RJ, AH, CC, JDB.

226

227 **Acknowledgements**

228 We would like to express our gratitude to the Center for High Performance Computing and the
229 Research Computing and Informatics Facility at Washington University in St. Louis for
230 providing computational resources and technical support. We are also grateful to the Prince
231 Mahidol Award Youth Program, Prince Mahidol Award Foundation under the Royal Patronage,
232 Thailand for the financial support that enabled Dr. Jarukasemkit to conduct research at
233 Washington University in St. Louis.

Depression and Prefrontal-Hippocampal Pathway

234 **Author Disclosure Statement**

235 The authors declare no conflict of interest

236

237 **Funding Information**

238 This work was supported by Advance Diagnostic Imaging Center Fund (No. 32080009), and

239 Faculty of Medicine Ramathibodi Hospital (No. RF_66138), Mahidol University, Thailand.

240 Setthanan Jarukasemkit is supported by the Prince Mahidol Award Youth Program, Prince

241 Mahidol Award Foundation under the Royal Patronage.

Depression and Prefrontal-Hippocampal Pathway

242 **References**

- 243 1. Nimitpanya P, Wainipitapong S, Wiwattarangkul T, et al. Evaluation of mental health and
244 satisfaction following transfeminine gender-affirming surgery in Thailand. *Transgend Health*
245 2022;7(1):61-7.
- 246 2. Ricard JA, Parker TC, Dhamala E, et al. Confronting racially exclusionary practices in the
247 acquisition and analyses of neuroimaging data. *Nat Neurosci* 2023;26(1):4-11.
- 248 3. Sheline YI, Barch DM, Price JL, et al. The default mode network and self-referential processes
249 in depression. *Proc Natl Acad Sci U S A* 2009;106(6):1942-7.
- 250 4. Xu X, Zhou Q, Wen F, et al. Meta-Analysis of Brain Volumetric Abnormalities in Patients
251 with Remitted Major Depressive Disorder. *Depress Anxiety* 2024;2024(1):6633510.
- 252 5. Kishi T, Ikuta T, Sakuma K, et al. Theta burst stimulation for depression: a systematic review
253 and network and pairwise meta-analysis. *Mol Psychiatry* 2024;1-7.
- 254 6. Hasler G, Northoff G. Discovering imaging endophenotypes for major depression. *Mol*
255 *Psychiatry* 2011;16(6):604-19.
- 256 7. Schmitz TW, Correia MM, Ferreira CS, et al. Hippocampal GABA enables inhibitory control
257 over unwanted thoughts. *Nat Commun* 2017;8(1):1311.
- 258 8. Barmania S. Tangerine Clinic: championing transgender health care. *Lancet HIV*
259 2023;10(11):e701.
- 260 9. Lotrakul M, Sumrithe S, Saipanish R. Reliability and validity of the Thai version of the PHQ-
261 9. *BMC Psychiatry* 2008;8:1-7.

Depression and Prefrontal-Hippocampal Pathway

- 262 10. Loavattanaving K. A comparative study of personality type (five factor model), emotional
263 quotient (Goleman), and work satisfaction of hotel sales person in Bangkok [master's thesis].
264 Bangkok: Thammasat University; 2004. Available form:
265 https://digital.library.tu.ac.th/tu_dc/frontend/Info/item/dc:115260 [Last Accessed: 9/16/2024].
- 266 11. Peek AL, Rebbeck TJ, Leaver AM, et al. A comprehensive guide to MEGA-PRESS for
267 GABA measurement. *Anal Biochem* 2023;669:115113.
- 268 12. Schallmo MP, Weldon KB, Burton PC, et al. Assessing methods for geometric distortion
269 compensation in 7 T gradient echo functional MRI data. *Hum Brain Mapp* 2021;42(13):4205-23.
- 270 13. Bijsterbosch J, Smith S, Forster S, et al. Resting state correlates of subdimensions of anxious
271 affect. *J Cogn Neurosci* 2014;26(4):914-26.
- 272 14. Zuo XN, Di Martino A, Kelly C, et al. The oscillating brain: complex and reliable.
273 *Neuroimage* 2010;49(2):1432-45.
- 274 15. Allaïli N, Valabrègue R, Auerbach EJ, et al. Single-voxel ¹H spectroscopy in the human
275 hippocampus at 3 T using the LASER sequence: characterization of neurochemical profile and
276 reproducibility. *NMR Biomed*. 2015 Oct;28(10):1209-17.
- 277 16. Aldridge Z, Patel S, Guo B, et al. Long-term effect of gender-affirming hormone treatment
278 on depression and anxiety symptoms in transgender people: A prospective cohort study.
279 *Andrology* 2021;9(6):1808-16.
- 280 17. Campbell S, MacQueen G. The role of the hippocampus in the pathophysiology of major
281 depression. *J Psychiatry Neurosci* 2004;29(6):417-26.

Depression and Prefrontal-Hippocampal Pathway

- 282 18. Dong D, Ming Q, Zhong X, et al. State-independent alterations of intrinsic brain network in
283 current and remitted depression. *Prog Neuropsychopharmacol Biol Psychiatry* 2019;89:475-80.
- 284 19. Che K, Mao N, Li Y, et al. Altered spontaneous neural activity in peripartum depression: a
285 resting-state functional magnetic resonance imaging study. *Front Psychol* 2020;11:656.
- 286 20. Egorova N, Veldsman M, Cumming T, et al. Fractional amplitude of low-frequency
287 fluctuations (fALFF) in post-stroke depression. *NeuroImage Clin* 2017;16:116-24.
- 288 21. Kamishikiryo T, Okada G, Itai E, et al. Left DLPFC activity is associated with plasma
289 kynurenine levels and can predict treatment response to escitalopram in major depressive
290 disorder. *Psychiatry Clin Neurosci* 2022;76(8):367-76.
- 291 22. Liu J, Shu Y, Wu G, et al. A neuroimaging study of brain activity alterations in treatment-
292 resistant depression after a dual target accelerated transcranial magnetic stimulation. *Front*
293 *Psychiatry* 2024;14:1321660
- 294 23. Schür RR, Draisma LW, Wijnen JP, et al. Brain GABA levels across psychiatric disorders: A
295 systematic literature review and meta-analysis of ¹H-MRS studies. *Hum Brain Mapp*
296 2016;37(9):3337-52.
- 297 24. Schiller CE, Meltzer-Brody S, Rubinow DR. The role of reproductive hormones in
298 postpartum depression. *CNS Spectr* 2015;20(1):48-59.
- 299 25. Hantsoo L, Payne JL. Towards understanding the biology of premenstrual dysphoric
300 disorder: From genes to GABA. *Neurosci Biobehav Rev* 2023;149:105168.

301

302

Depression and Prefrontal-Hippocampal Pathway

303 Figure 1: Regions of interest

304 Legend: Regions of interest included the hippocampus (green) and DLPFC (red). L indicates the
305 left hemisphere, and R indicates the right hemisphere.

306

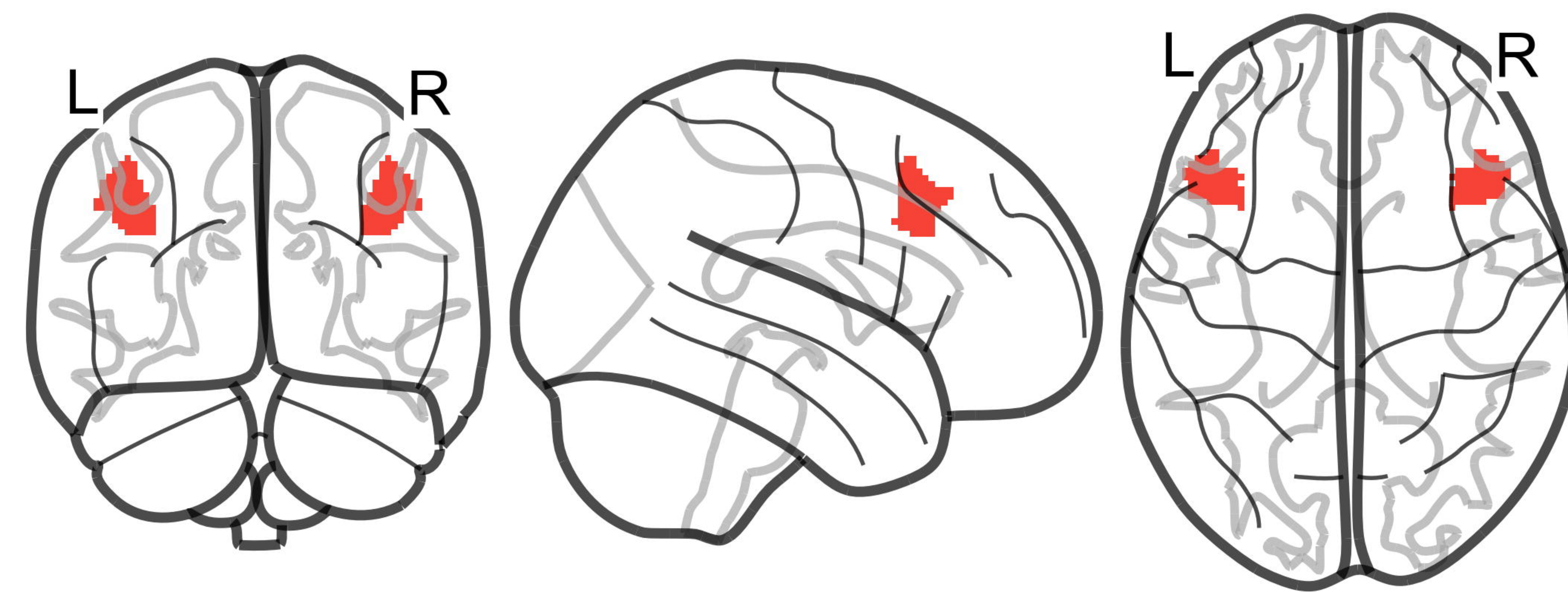
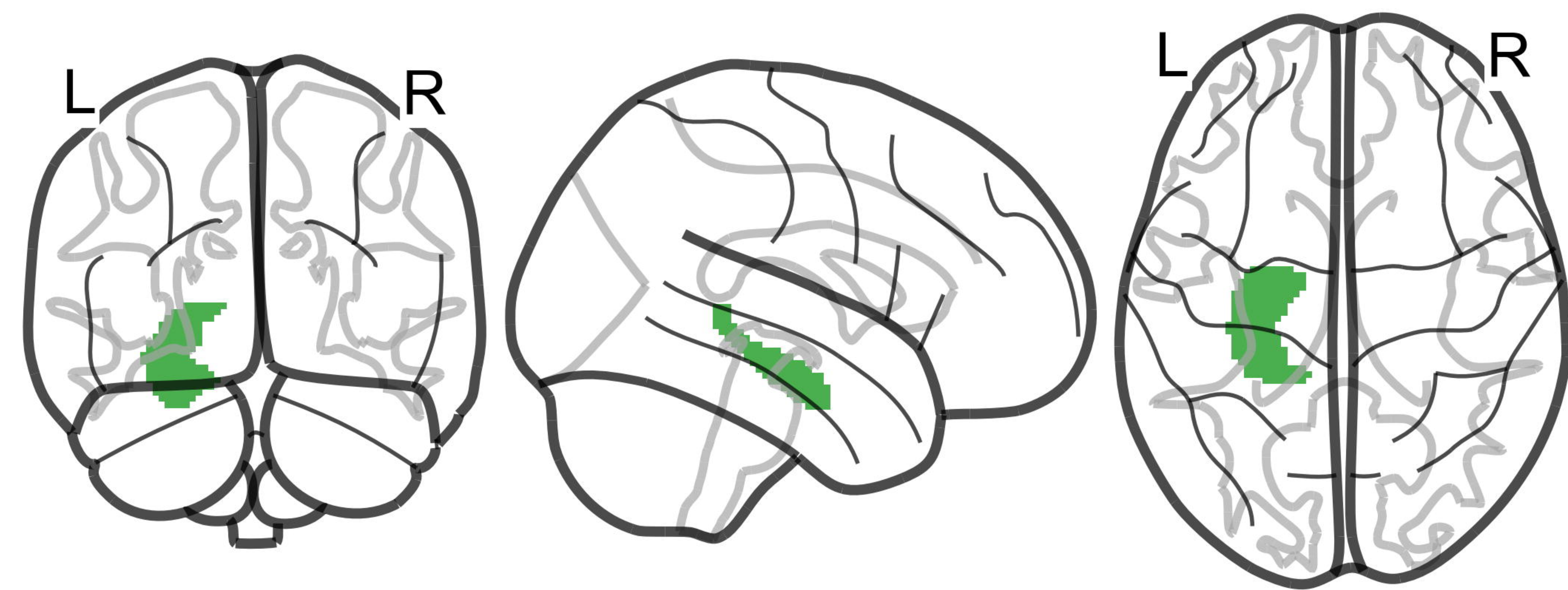
307 Figure 2: Associations between neuroimaging measures and depression severity

308 Legend: Scatter plots illustrate the relationship of patient health questionnaire (PHQ-9) scores
309 with gamma-aminobutyric acid (GABA) in the hippocampal (A) and fractional amplitude of low
310 frequency fluctuation (fALFF) in the dorsolateral prefrontal cortex (DLPFC) (B) after
311 controlling for the confounder. 95% Confidence intervals and marginal histograms are also
312 displayed. GABA/Cr indicates GABA concentrations normalized to the creatinine reference.

313

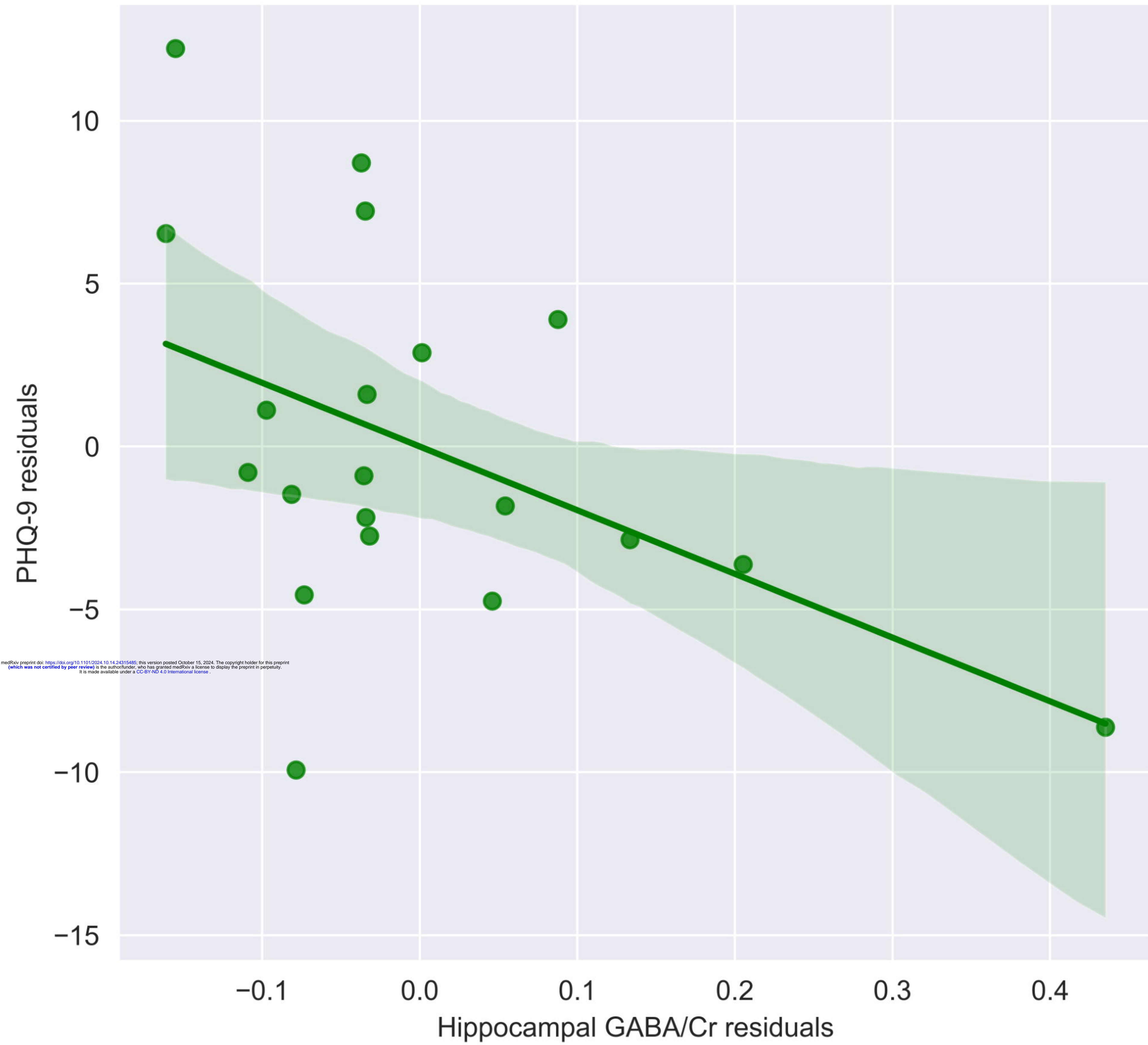
314 Figure 3: Path diagram of mediation analysis

315 Legend: The right diagram displays separate linear models, while the left diagram illustrates the
316 mediation analysis model. A) Direct associations between gamma-aminobutyric acid (GABA) in
317 the hippocampus and patient health questionnaire (PHQ-9) scores, and between fractional
318 amplitude of low frequency fluctuations (fALFF) in the dorsolateral prefrontal cortex (DLPFC)
319 and PHQ-9 were estimated. B) The mediation analysis revealed a trend-level mediation effect of
320 DLPFC fALFF on the relationship between hippocampal GABA and PHQ-9. The arrows
321 indicate regression coefficients, and asterisks denote significance association ($p < 0.05$). L
322 indicates the left hemisphere, and R indicates the right hemisphere.



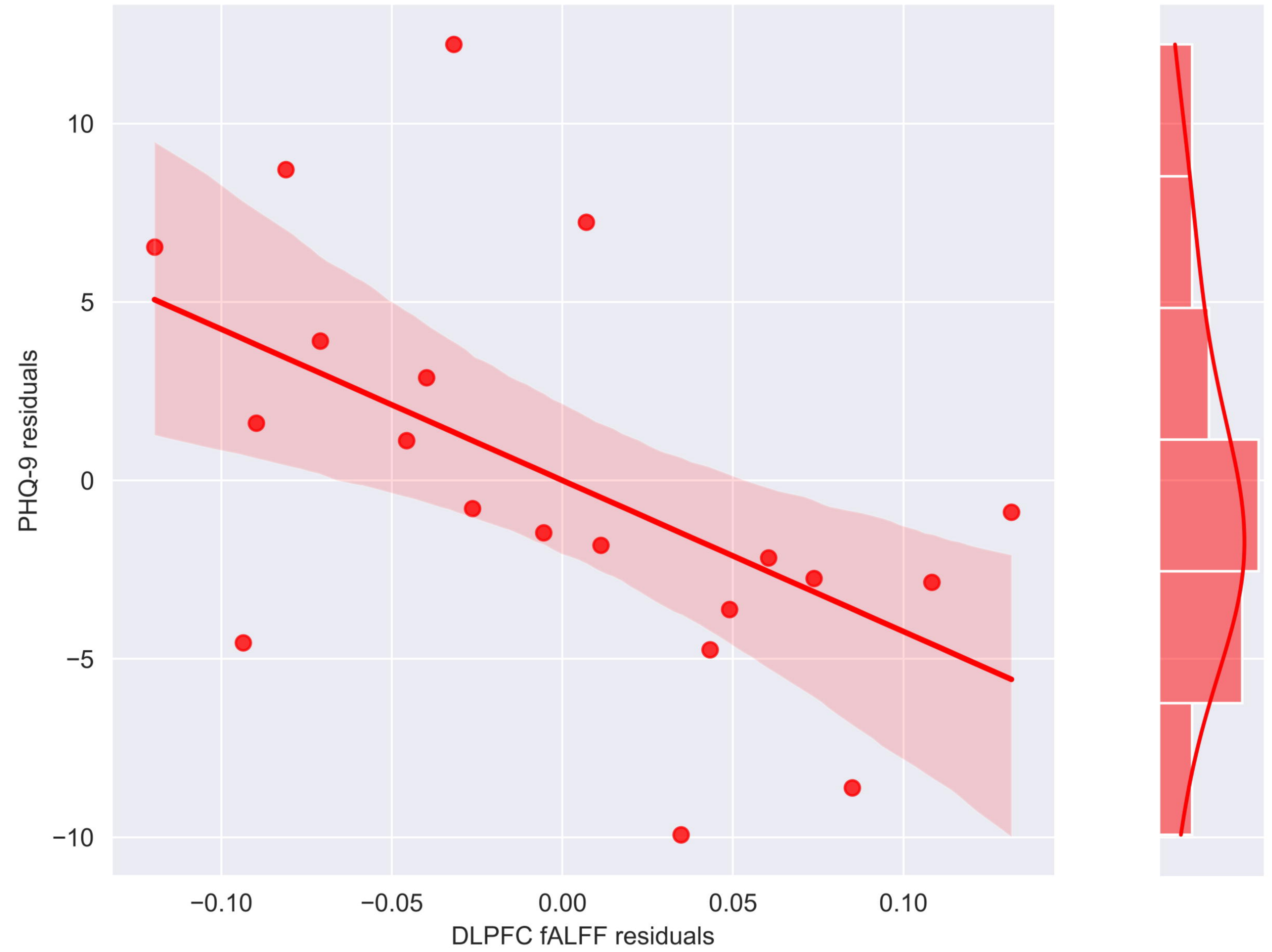
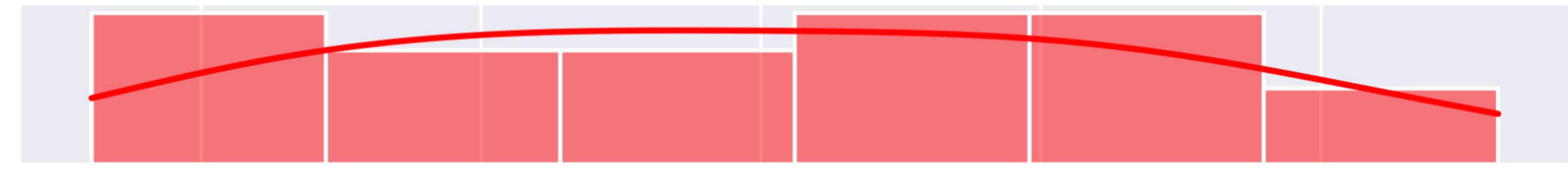
(A)

Hippocampal GABA and Depression

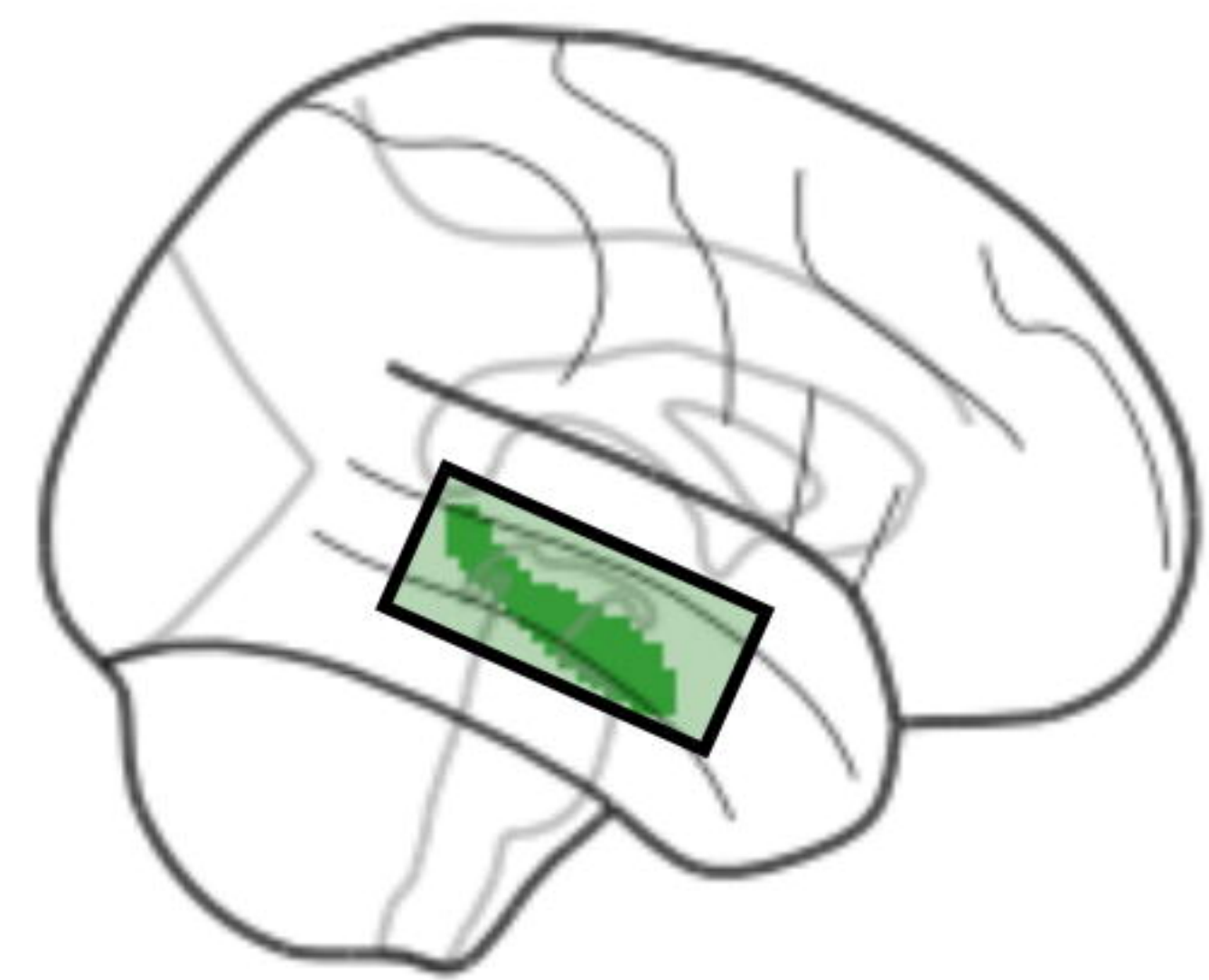


(B)

DLPFC fALFF and Depression



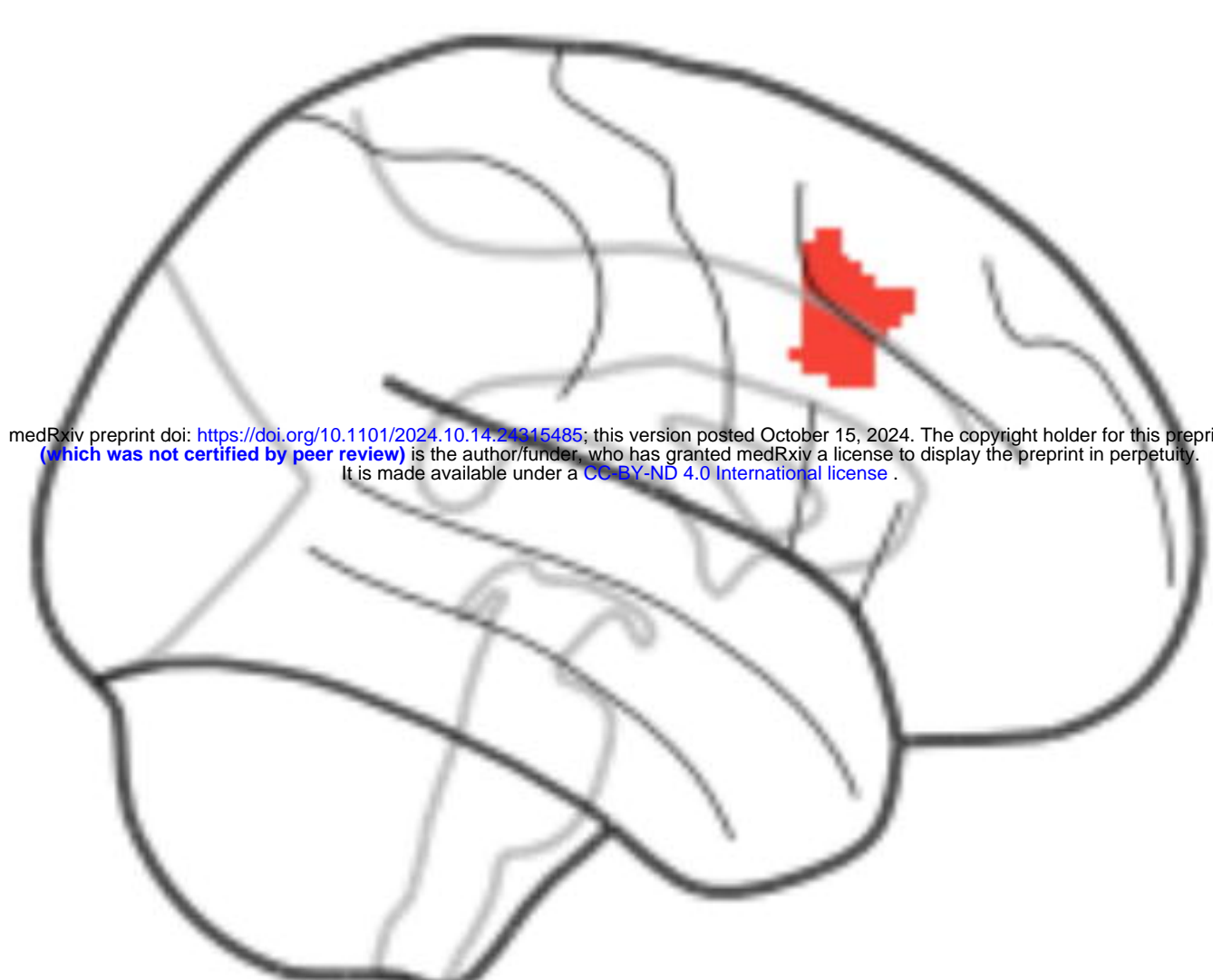
(A)



Hippocampus
GABA

$\beta = -0.48*$
 $p = 0.039$

PHQ-9

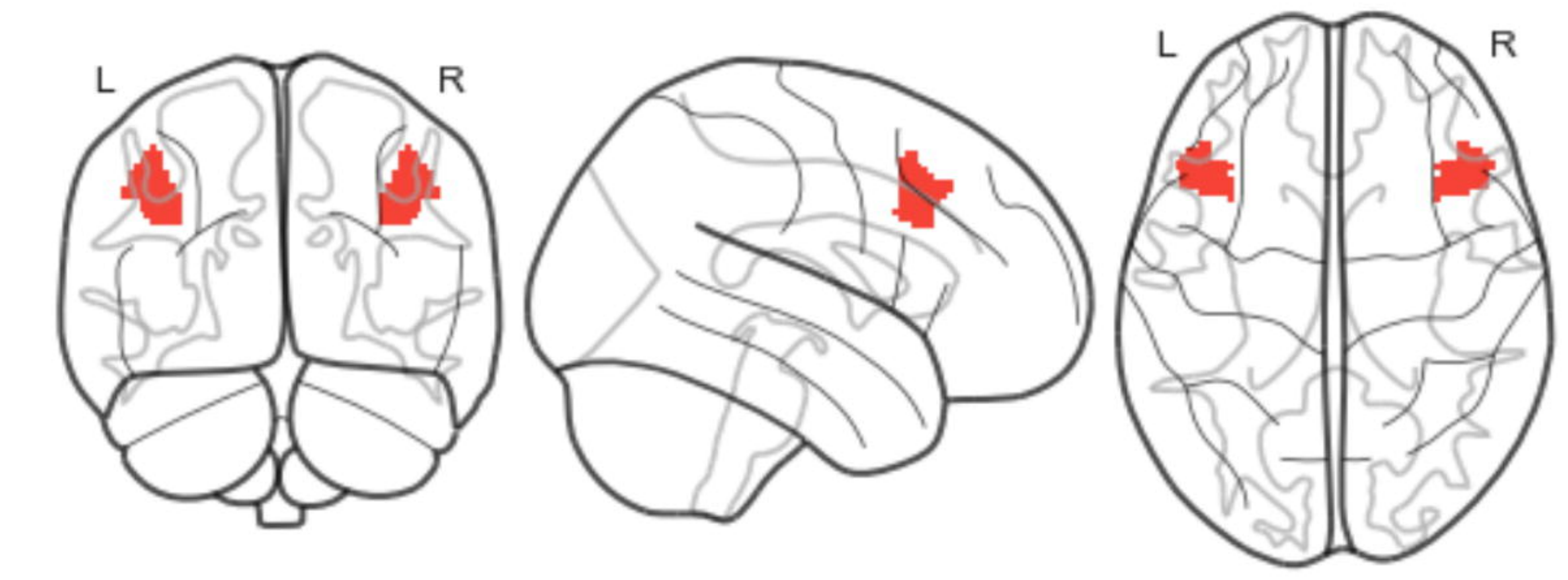


DLPFC fALFF

$\beta = -0.54*$
 $p = 0.015$

PHQ-9

(B)



DLPFC fALFF

$0.48*$

-0.41

Hippocampus
GABA

-0.28

PHQ-9

