

Supplemental Materials**Title:** Incidence of Right Ventricular Dysfunction in an Echocardiographic Referral Cohort*Table of Contents:*

Supplemental Methods: Page 2-3

eTable 1-7: Pages 4-10

eFigures 1-4: Pages 11-14

Supplemental References: Page 15

Supplemental Methods

Exposures, Covariates, and Outcomes

Normal RV function was defined by tricuspid annular plane systolic excursion (TAPSE) ≥ 17 mm based on the 2015 ASE/EACI guidelines.¹ We selected TAPSE as measure of RV systolic function in this study rather than other TTE parameters such as fractional area change or tricuspid annular velocity (S') since these were less consistently measured in our clinical dataset and require high image quality. Last medical contact was defined as last date for any measurement, procedure, condition, or visit.

From each TTE we abstracted TAPSE, TRV, RAP, PASP, left atrial diameter, average E/e', diastolic function, significant valvular disease, and left ventricular ejection fraction (LVEF). We selected body mass index (BMI), systolic blood pressure (SBP), and estimated glomerular filtration rate (eGFR) measurements within 180-days before or after baseline TTE. We extracted data on comorbidities implicated in the development of chronic RVD, including heart failure (HF), coronary artery disease (CAD), atrial fibrillation (AF), interstitial lung disease (ILD), chronic obstructive pulmonary disease (COPD), obstructive sleep apnea (OSA), human immunodeficiency virus (HIV), diabetes mellitus (DM), hyperlipidemia (HLD), and systemic sclerosis. Comorbidities were considered present at baseline if a patient had one inpatient or two outpatient ICD-9 or 10 codes dated before the baseline TTE or within 180 days afterwards. We categorized valvular disease dichotomously, as present or absent based on moderate or worse left-sided valvular disease and tricuspid regurgitation (TR), with mild mitral stenosis also included as significant left-sided valvular disease. PASP was calculated from TRV and right atrial pressure (RAP) when unavailable from the TTE report using the modified Bernoulli equation. We assumed a RAP of 5 mmHg when missing, based on prior evidence.^{2,3}

Characteristics Associated with RVD and TAPSE

For the Full Cohort, the outcome measure was dichotomous presence or absence of RVD. The duration of exposure was the time from baseline TTE to follow up TTE with RVD, or for those without development of RVD the time from baseline TTE to last medical contact. For the Repeat TTE cohort we selected the TAPSE value from the temporally closest TTE (to baseline TTE) with RVD for patients who developed RVD and the TAPSE from the latest TTE available for patients who did not develop RVD, excluding patients without an available follow up TAPSE. Data regarding renal function and echocardiographic surrogates of diastolic dysfunction had a high degree of missingness therefore were not included in the primary models, but were individually added to the primary model in sensitivity analyses.

HF Hospitalization

We defined HF hospitalization by inpatient ICD-9 codes 425 or 428 or ICD-10 codes I42 or I50. The time of the second TTE was considered baseline. If the TTE was conducted inpatient, the next hospitalization for HF was considered as the outcome event. Inpatient TTE status determined the presence of any inpatient ICD code within one day of the TTE. Patients without hospitalization were censored at the time of last medical touch.

eTable 1: Clinical Characteristics at Baseline Transthoracic Echocardiogram by Follow Up Status			
	No Follow Up Echo (n = 32018)	Follow Up Echo (n = 13735)	p-value
Age in years	62 (49–72)	64 (51–72)	<0.001
Male Sex	13994 (44%)	6725 (49%)	<0.001
BMI in kg/m²	28.7 (24.8–33.8)	29.0 (25.1–33.9)	<0.001
Race/Ethnicity			<0.001
White, Non-Hispanic	25538 (80%)	11137 (81%)	
Black	3883 (12%)	1881 (14%)	
Hispanic	459 (1%)	191 (1%)	
Other	1145 (4%)	407 (3%)	
Baseline TAPSE in cm	2.20 (1.99–2.51)	2.20 (1.93–2.50)	<0.001
Baseline RVSP in mmHg	28 (23–35)	30 (24–37)	<0.001
eGFR in mL/min/1.73m²	79 (61–95)	75 (55–92)	<0.001
SBP in mmHg	128 (116–142)	126 (114–140)	<0.001
Systemic Sclerosis	168 (1%)	158 (1%)	<0.001
Heart Failure	6730 (21%)	5459 (40%)	<0.001
LV Ejection Fraction	62 (57–67)	60 (55–66)	<0.001
Atrial fibrillation	6919 (22%)	4171 (30%)	<0.001
Coronary Artery Disease	8411 (26%)	5183 (38%)	<0.001
Left-Sided Valvular Disease	796 (2%)	1301 (9%)	<0.001
Tricuspid Regurgitation	431 (1%)	432 (3%)	<0.001
Interstitial Lung Disease	3809 (12%)	2526 (18%)	<0.001
COPD	3888 (12%)	1901 (14%)	<0.001
Obstructive Sleep Apnea	5900 (18%)	2989 (22%)	<0.001
HIV	342 (1%)	158 (1%)	<0.001
Diabetes Mellitus	7827 (24%)	4125 (30%)	<0.001
Hyperlipidemia	17519 (55%)	8448 (62%)	<0.001
Follow Up Time in days	623 (297–1267)	1137 (570–1990)	<0.001

eTable 2: Multivariate Cox Regression Model of Characteristics associated with Incident Right Ventricular Dysfunction

	Full Cohort	Full Cohort Time-Updated ^c	Repeat TTE Cohort	Repeat TTE Cohort Time-Updated ^c
	Hazard Ratio [95% CI]			
Age^a	0.89 (0.84–0.94) ^b	0.76 (0.69–0.85) ^b	1.00 (0.94–1.06) ^b	0.96 (0.90–1.01) ^b
Male Sex	1.09 (1.02–1.16)	0.94 (0.84–1.05)	1.07 (1.00–1.14)	1.03 (0.97–1.10)
BMI^a	0.93 (0.88–0.98) ^b	0.88 (0.83–0.93) ^b	0.90 (0.85–0.95) ^b	0.87 (0.82–0.91) ^b
Race/Ethnicity (vs. Non-Hispanic White)				
Black	0.93 (0.84–1.02)	0.92 (0.84–1.02)	0.88 (0.80–0.97)	0.88 (0.80–0.97)
Hispanic	1.03 (0.79–1.35)	1.05 (0.80–1.38)	1.00 (0.77–1.32)	1.23 (0.78–1.34)
Other	0.99 (0.82–1.19)	1.01 (0.84–1.22)	1.03 (0.85–1.23)	1.05 (0.87–1.27)
Baseline TAPSE^a	0.64 (0.61–0.67) ^b	0.64 (0.61–0.67) ^b	0.60 (0.57–0.64) ^b	0.62 (0.59–0.65) ^b
Baseline RVSP^a	1.22 (1.17–1.28) ^b	1.18 (1.06–1.32) ^b	1.13 (1.08–1.19) ^b	1.12 (1.06–1.17) ^b
Systolic Blood Pressure^a	0.98 (0.94–1.02)	0.94 (0.87–1.01)	0.99 (0.95–1.03)	1.00 (0.95–1.04)
Systemic Sclerosis	1.84 (1.41–2.39)	1.81 (1.41–2.32)	1.31 (1.00–1.71)	1.32 (1.03–1.70)
Heart Failure	1.88 (1.75–2.03)	2.26 (2.09–2.43)	1.43 (1.33–1.53)	1.59 (1.48–1.71)
LV Ejection Fraction^a	1.01 (0.96–1.06) ^b	1.02 (0.98–1.07) ^b	1.07 (1.02–1.12) ^b	1.08 (1.03–1.12) ^b
Atrial fibrillation	1.54 (1.44–1.65)	1.81 (1.69–2.94)	1.44 (1.34–1.53)	1.61 (1.50–1.72)
Coronary Artery Disease	1.26 (1.17–1.36)	1.39 (1.29–1.50)	1.18 (1.10–1.27)	1.28 (1.19–1.38)
Left-Sided Valvular Disease	1.68 (1.53–1.85)	1.58 (1.44–1.74)	1.26 (1.15–1.38)	1.23 (1.12–1.35)
Tricuspid Regurgitation	0.84 (0.72–0.98)	0.90 (0.75–1.07)	0.82 (0.71–0.96)	0.82 (0.70–0.96)
Interstitial Lung Disease	1.41 (1.30–1.52)	1.53 (1.42–1.64)	1.27 (1.17–1.37)	1.36 (1.26–1.46)
Chronic Obstructive Lung Disease	1.07 (0.98–1.17)	1.02 (0.94–1.11)	1.14 (1.04–1.24)	1.07 (0.99–1.16)
Obstructive Sleep Apnea	1.09 (1.00–1.18)	1.09 (0.81–1.39)	1.02 (0.94–1.10)	1.01 (0.94–1.09)
HIV	1.12 (0.85–1.46)	1.06 (0.81–1.39)	1.16 (0.89–1.53)	1.13 (0.87–1.49)
Diabetes Mellitus	1.30 (1.21–1.39)	1.29 (1.21–1.38)	1.17 (1.18–1.37)	1.27 (1.19–1.37)
Hyperlipidemia	1.05 (0.97–1.13)	1.07 (0.98–1.16)	1.00 (0.92–1.08)	0.98 (0.90–1.06)
Sensitivity Analyses with >10% Missingness^d				
eGFR^a	0.89 (0.85–0.94) ^b	0.91 (0.87–0.96) ^b	0.88 (0.84–0.92) ^b	0.90 (0.86–0.95) ^b
LA diameter^a	1.16 (1.09–1.24) ^b	1.11 (1.05–1.18)	1.11 (1.04–1.18) ^b	1.07 (0.94–1.10) ^b
Diastolic Dysfunction (vs. normal)				
Stage 1	1.14 (1.01–1.29)	1.07 (0.95–1.21)	1.01 (0.90–1.14)	1.02 (0.91–1.15)
Stage 2	1.30 (1.10–1.54)	1.16 (0.98–1.38)	1.22 (1.03–1.44)	1.17 (1.01–1.36)
Stage 3	1.37 (1.07–1.75)	1.26 (0.99–1.60)	1.40 (1.10–1.78)	1.36 (1.09–1.70)
LV average E/e'^a	1.02 (0.93–1.12)	1.00 (0.92–1.10)	0.97 (0.89–1.07)	0.97 (0.89–1.06)

^aHazard Ratios for continuous variables are displayed as 75th %ile compared to 25th %ile. Hazards may not reflect statistically significant association.
^bDenotes a statistically significant association between continuous variable and outcome (p <0.05)
^cICD-code derived comorbidities were time-updated in this model, including Heart Failure, Atrial Fibrillation, Coronary Artery Disease, Interstitial Lung Disease, Systemic Sclerosis, Chronic Obstructive Lung Disease, Obstructive Sleep Apnea, HIV, Diabetes Mellitus, and Hyperlipidemia
^dEach variable below this sub header was added independently into the primary model of variables above

eTable 3: Multivariate Cox Regression Model of Baseline Characteristics associated with Incident Right Ventricular Dysfunction, Stratified by PH Status

	Full Cohort		Repeat TTE Cohort	
	PH+	PH-	PH+	PH-
Baseline TAPSE^a	0.65 (0.59–0.71) ^b	0.63 (0.59–0.66) ^b	0.66 (0.59–0.73) ^b	0.59 (0.56–0.63) ^b
Baseline RVSP^a	1.20 (1.08–1.35) ^b	1.11 (1.05–1.17) ^b	1.21 (1.08–1.36) ^b	1.05 (0.99–1.10)
Age^a	0.81 (0.72–0.90) ^b	0.91 (0.85–0.98) ^b	0.98 (0.88–1.09)	0.98 (0.92–1.06) ^b
Male Sex	0.98 (0.88–1.10)	1.12 (1.03–1.21)	0.99 (0.89–1.12)	1.10 (1.02–1.19)
BMI^a	0.85 (0.78–0.93) ^b	0.95 (0.89–1.02) ^b	0.80 (0.74–0.88) ^b	0.94 (0.88–1.00) ^b
Race/Ethnicity (vs. Non-Hispanic White)				
Black	0.93 (0.80–1.08)	0.92 (0.81–1.04)	0.89 (0.77–1.04)	0.88 (0.78–0.99)
Hispanic	1.34 (0.86–2.10)	0.91 (0.65–1.28)	1.39 (0.83–2.02)	0.89 (0.63–1.25)
Other	1.04 (0.74–1.45)	0.99 (0.79–1.24)	0.94 (0.67–1.31)	1.09 (0.87–1.36)
Systolic Blood Pressure^a	0.92 (0.85–0.99)	1.00 (0.96–1.06)	0.94 (0.87–1.02)	1.01 (0.96–1.07) ^b
Diabetes Mellitus	1.15 (1.02–1.30)	1.36 (1.25–1.49)	1.18 (1.04–1.34)	1.30 (1.19–1.42)
Hyperlipidemia	0.97 (0.85–1.11)	1.09 (0.99–1.19)	0.93 (0.81–1.06)	1.03 (0.94–1.14)
Interstitial Lung Disease	1.25 (1.10–1.42)	1.45 (1.32–1.60)	1.18 (1.04–1.34)	1.30 (1.18–1.43)
Chronic Obstructive Lung Disease	1.00 (0.87–1.15)	1.15 (1.02–1.29)	1.06 (0.92–1.21)	1.19 (1.06–1.34)
Obstructive Sleep Apnea	1.14 (1.00–1.31)	1.05 (0.95–1.16)	1.05 (0.91–1.20)	1.00 (0.91–1.11)
Systemic Sclerosis	1.40 (0.94–2.10)	2.17 (1.53–3.09)	1.09 (0.73–1.63)	1.45 (1.02–2.07)
HIV	0.80 (0.45–1.42)	1.23 (0.90–1.67)	0.83 (0.47–1.48)	1.28 (0.95–1.76)
Heart Failure	1.74 (1.52–1.98)	1.91 (1.74–2.09)	1.52 (1.33–1.73)	1.39 (1.27–1.51)
Atrial fibrillation	1.62 (1.43–1.82)	1.52 (1.40–1.66)	1.55 (1.38–1.75)	1.39 (1.28–1.51)
Coronary Artery Disease	1.25 (1.10–1.42)	1.26 (1.16–1.38)	1.14 (1.01–1.30)	1.18 (1.08–1.29)
Left-Sided Valvular Disease	1.16 (1.00–1.35)	2.25 (2.00–2.54)	1.03 (0.88–1.20)	1.43 (1.27–1.60)
Tricuspid Regurgitation	0.85 (0.71–1.02)	1.11 (0.83–1.47)	0.81 (0.67–0.97)	0.97 (0.73–1.29)
LV Ejection Fraction^a	0.94 (0.86–1.02) ^b	1.03 (0.98–1.09) ^b	0.99 (0.91–1.08) ^b	1.10 (1.04–1.15) ^b

^aHazard Ratios for continuous variables are displayed as 75th %ile compared to 25th %ile. Hazards may not reflect statistically significant association.
^bDenotes a statistically significant association between a continuous variable (linear or non-linear) and the outcome (p <0.05)

eTable 4: Ordinary Least Square Regression Model of Baseline Characteristics associated with Change in TAPSE (in mm)		
	Coefficient (S.E.)	p-value
Baseline TAPSE	Non-linear	<0.001
Baseline RVSP	Non-linear	0.016
Age (per 10 years)	0.09 (0.03)	0.005
Male Sex	0.53 (0.18)	<0.001
BMI	Non-linear	<0.001
Race/Ethnicity (vs. Non-Hispanic White)		
Black	0.30 (0.13)	0.021
Hispanic	-0.77 (0.78)	0.325
Other	0.39 (0.50)	0.439
Systolic Blood Pressure (per 10 mmHg)	0.05 (0.02)	0.038
Diabetes Mellitus	- 0.41 (0.10)	<0.001
Hyperlipidemia	0.11 (0.11)	0.283
Interstitial Lung Disease	- 0.46 (0.12)	<0.001
Chronic Obstructive Lung Disease	-0.10 (0.13)	0.447
Obstructive Sleep Apnea	0.26 (0.11)	0.022
Systemic Sclerosis	-0.76 (0.04)	0.060
HIV	-0.42 (0.40)	0.302
Heart Failure	- 0.73 (0.10)	<0.001
Atrial fibrillation	- 1.22 (0.10)	<0.001
Coronary Artery Disease	- 0.93 (0.10)	<0.001
Left-Sided Valvular Disease	- 1.18 (0.15)	<0.001
Tricuspid Regurgitation	- 0.37 (0.26)	0.200
LV Ejection Fraction (per 10% increment)	0.27 (0.04)	<0.001
Follow up (per year)	-0.03 (0.02)	0.087

eTable 5: Multivariable Cox Regression of Characteristics Associated with HF Hospitalization (RV Dysfunction)		
	Hazard Ratio	95% CI
Incident RV Dysfunction	2.02	1.84 – 2.21
Heart Failure^b	2.00	1.81 – 2.22
Atrial Fibrillation^b	1.20	1.10 – 1.32
Coronary Artery Disease^b	1.29	1.17 – 1.42
Systemic Sclerosis^b	1.25	0.88 – 1.78
Interstitial Lung Disease^b	1.17	1.05 – 1.29
Chronic Obstructive Pulmonary Disease^b	1.41	1.27 – 1.57
Obstructive Sleep Apnea^b	1.11	1.00 – 1.22
Human Immunodeficiency Virus^b	1.35	0.98 – 1.85
Diabetes Mellitus^b	1.49	1.36 – 1.64
Hyperlipidemia^b	0.89	0.80 – 0.99
Baseline Tricuspid Regurgitation^b	0.74	0.61 – 0.91
Baseline Left Sided Valvular Disease^b	1.03	0.91 – 1.17
Age at 2nd TTE (per 10 years)	1.03	0.96 – 1.10
Male Sex	1.04	0.95 – 1.13
Baseline BMI^a	1.06	0.99 – 1.13
Race (vs White Race)		
Black	1.22	1.09 – 1.35
Hispanic	1.24	0.86 – 1.78
Other	0.96	0.73 – 1.26
Baseline TAPSE (per 10 mm)	1.31	1.01 – 1.70
Baseline Systolic Blood Pressure (per 10 mmHg)	0.99	0.94 – 1.04
Baseline RVSP (per 10 mmHg)	1.30	1.21 – 1.40
Baseline LVEF (per 10%)	0.88	0.83 – 0.92
^a Hazard Ratios for continuous variables found to be non-linearly associated with the outcome are displayed as 75 th %ile compared to 25 th %ile. Hazards may not reflect statistically significant association. ^c Comorbidities are included as time-varying covariates in the model		

eTable 6: Multivariate Cox Regression Model of Characteristics associated with RV-PA Uncoupling		
	Full Cohort	Full Cohort Time-Updated^c
	Hazard Ratio [95% CI]	
Age^a	1.08 (0.97 – 1.20) ^b	0.98 (0.89 – 1.08) ^b
Male Sex	1.11 (0.99 – 1.25)	1.04 (0.92 – 1.17)
BMI^a	0.99 (0.90 – 1.10) ^b	0.91 (0.83 – 1.01) ^b
Race/Ethnicity (vs. Non-Hispanic White)		
Black	1.18 (1.01 – 1.39)	1.18 (1.00 – 1.39)
Hispanic	0.90 (0.52 – 1.56)	0.91 (0.53 – 1.59)
Other	0.95 (0.64 – 1.41)	0.94 (0.63 – 1.39)
Baseline TAPSE^a	0.64 (0.59 – 0.70) ^b	0.66 (0.61 – 0.72) ^b
Baseline RVSP^a	2.43 (2.14 – 2.75) ^b	2.23 (1.97 – 2.52) ^b
Systolic Blood Pressure^a	0.96 (0.89 – 1.04)	0.98 (0.91 – 1.06)
Systemic Sclerosis	2.67 (1.71 – 4.18)	2.45 (1.61 – 3.72)
Heart Failure	1.94 (1.69 – 2.23)	3.05 (2.63 – 3.54)
LV Ejection Fraction^a	0.90 (0.92 – 0.99) ^b	0.93 (0.84 – 1.02) ^b
Atrial fibrillation	1.76 (1.55 – 1.99)	2.22 (1.95 – 2.52)
Coronary Artery Disease	1.29 (1.13 – 1.48)	1.40 (1.23 – 1.61)
Left-Sided Valvular Disease	1.55 (1.33 – 1.81)	1.42 (1.22 – 1.66)
Tricuspid Regurgitation	1.02 (0.81 – 1.27)	1.04 (0.83 – 1.31)
Interstitial Lung Disease	1.09 (0.95 – 1.26)	1.33 (1.17 – 1.51)
Chronic Obstructive Lung Disease	1.26 (1.08 – 1.46)	1.26 (1.10 – 1.44)
Obstructive Sleep Apnea	0.99 (0.85 – 1.15)	1.07 (0.93 – 1.22)
HIV	0.98 (0.58 – 1.68)	0.89 (0.52 – 1.51)
Diabetes Mellitus	1.37 (1.21 – 1.56)	1.39 (1.22 – 1.57)
Hyperlipidemia	0.90 (0.78 – 1.04)	0.85 (0.73 – 1.00)
Sensitivity Analyses with >10% Missingness^d		
eGFR^a	0.82 (0.75 – 0.89) ^b	0.84 (0.77 – 0.91) ^b
LA diameter^a	1.21 (1.07 – 1.36) ^b	1.13 (1.00 – 1.28) ^b
Diastolic Dysfunction (vs. normal)		
Stage 1	1.32 (1.06 – 1.65)	1.19 (0.95 – 1.48)
Stage 2	1.92 (1.47 – 2.51)	1.52 (1.17 – 1.98)
Stage 3	2.05 (1.42 – 3.00)	1.66 (1.16 – 2.38)
LV average E/e^{2a}	1.18 (0.97 – 1.44)	1.14 (0.95 – 1.38)

^aHazard Ratios for continuous variables are displayed as 75th %ile compared to 25th %ile. Hazards may not reflect statistically significant association.

^bDenotes a statistically significant association between continuous variable and outcome (p <0.05)

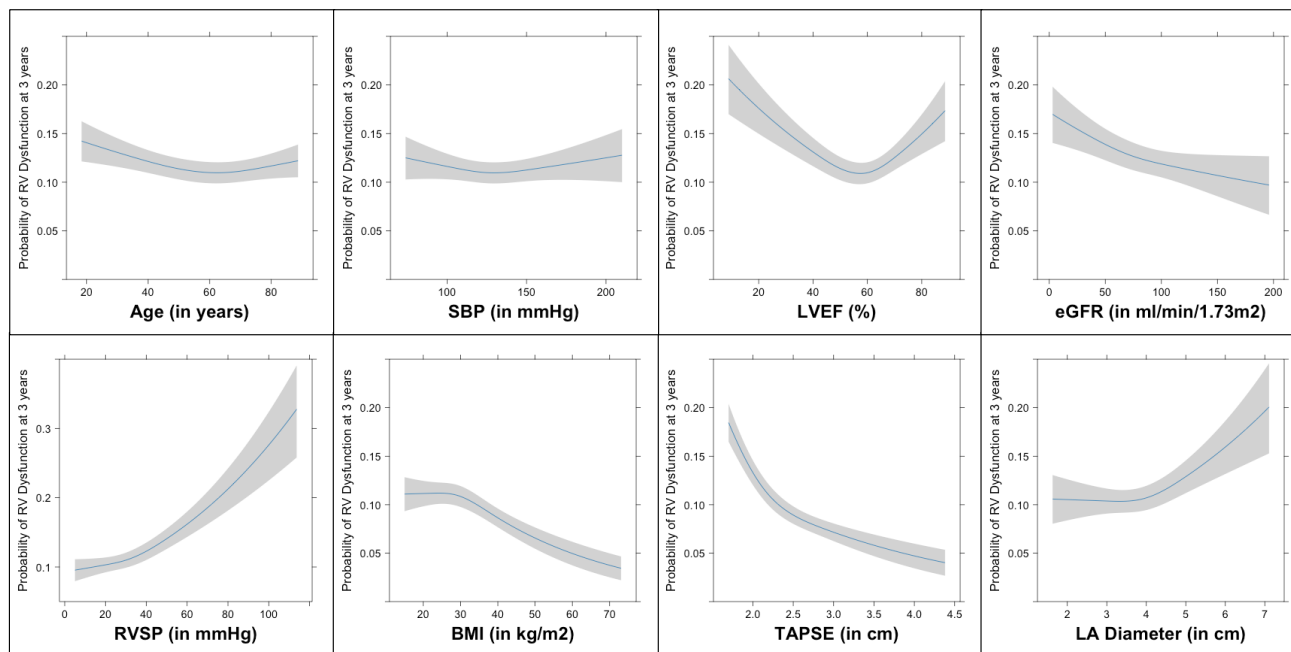
^cICD-code derived comorbidities were time-updated in this model, including Heart Failure, Atrial Fibrillation, Coronary Artery Disease, Interstitial Lung Disease, Systemic Sclerosis, Chronic Obstructive Lung Disease, Obstructive Sleep Apnea, HIV, Diabetes Mellitus, and Hyperlipidemia

^dEach variable below this sub header was added independently into the primary model of variables above

eTable 7: Multivariable Cox Regression of Characteristics Associated with HF Hospitalization (RV-PA Uncoupling)		
	Hazard Ratio	95% CI
RV-PA Uncoupling	3.21	2.84 – 3.63
Heart Failure^b	1.95	1.71 – 2.22
Atrial Fibrillation^b	1.11	0.98 – 1.25
Coronary Artery Disease^b	1.28	1.13 – 1.46
Systemic Sclerosis^b	1.42	0.89 – 2.28
Interstitial Lung Disease^b	1.37	1.20 – 1.56
Chronic Obstructive Pulmonary Disease^b	1.22	1.06 – 1.41
Obstructive Sleep Apnea^b	1.17	1.02 – 1.33
Human Immunodeficiency Virus^b	1.22	0.82 – 1.81
Diabetes Mellitus^b	1.51	1.34 – 1.70
Hyperlipidemia^b	0.98	0.86 – 1.14
Baseline Tricuspid Regurgitation^b	0.81	0.62 – 1.05
Baseline Left Sided Valvular Disease^b	1.09	0.94 – 1.26
Age at 2nd TTE (per 10 years)	1.06	0.97 – 1.16
Male Sex	1.07	0.95 – 1.20
Baseline BMI^a	0.98	0.96 – 1.00
Race (vs White Race)		
Black	1.19	1.03 – 1.38
Hispanic	1.05	0.65 – 1.71
Other	0.72	0.48 – 1.10
Baseline TAPSE (per 10 mm)	1.30	0.92 – 1.83
Baseline Systolic Blood Pressure (per 10 mmHg)	1.02	0.93 – 1.11
Baseline RVSP (per 10 mmHg)	1.25	1.09 – 1.44
Baseline LVEF (per 10%)	0.90	0.85 – 0.96
^a Hazard Ratios for continuous variables found to be non-linearly associated with the outcome are displayed as 75 th %ile compared to 25 th %ile. Hazards may not reflect statistically significant association. ^c Comorbidities are included as time-varying covariates in the model		

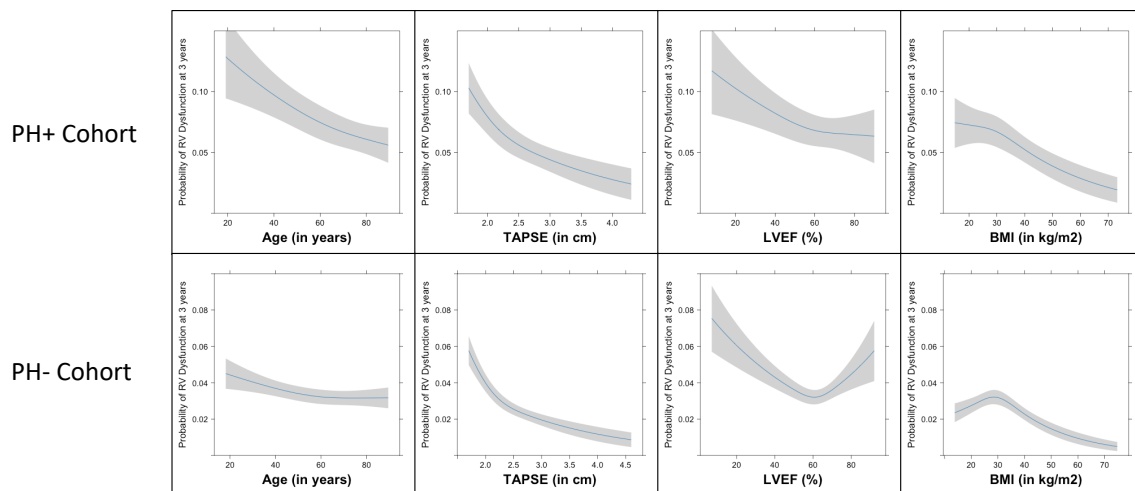
eFigure 1: Associations between continuous variables and the probability of right ventricular dysfunction at 3 years in the Repeat TTE Cohort

eFigure 1 displays the model-adjusted association between continuous baseline covariates and the outcome of incident right ventricular dysfunction as restricted cubic splines with 3 knots within the Repeat TTE Cohort. The Y-axis displays the probability of RV dysfunction at 3 years of follow up and the x-axis displays the range of covariate values with the gray area representing a 95% confidence interval for the effect estimate at a given x-axis value. Relationships between continuous covariates and probability of right ventricular dysfunction (the shape of the curves) in the Repeat TTE Cohort are essentially unchanged from the full cohort (Figure 3).



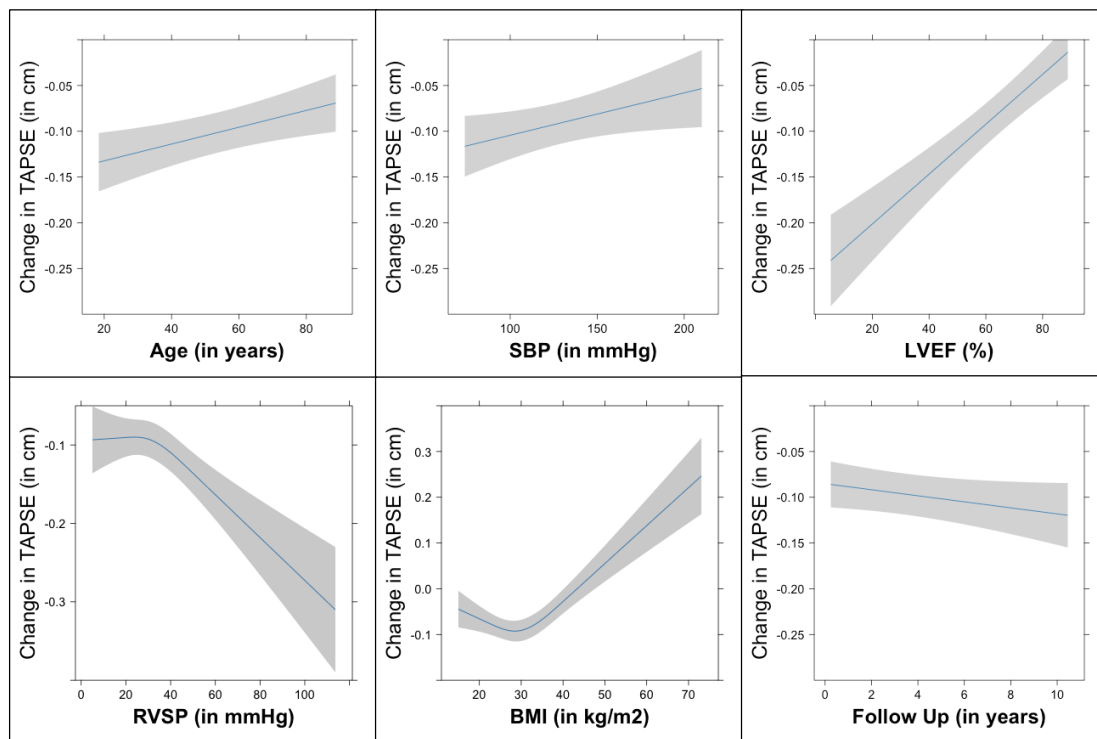
eFigure 2: Associations between continuous variables and the probability of right ventricular dysfunction at 3 years, comparing significantly associated variables between PH+ and PH- cohorts.

eFigure 2 displays the model-adjusted association between continuous baseline covariates and the outcome of incident right ventricular dysfunction as restricted cubic splines with 3 knots. Only those covariates with a statistically significant association with right ventricular dysfunction are displayed. The Y-axis displays the probability of right ventricular dysfunction at 3 years of follow up and the x-axis displays the range of covariate values with the gray area representing a 95% confidence interval for the effect estimate at a given x-axis value. Relationships between continuous covariates and probability of right ventricular dysfunction (the shape of the curves) are similar between the PH+ and PH- cohorts.



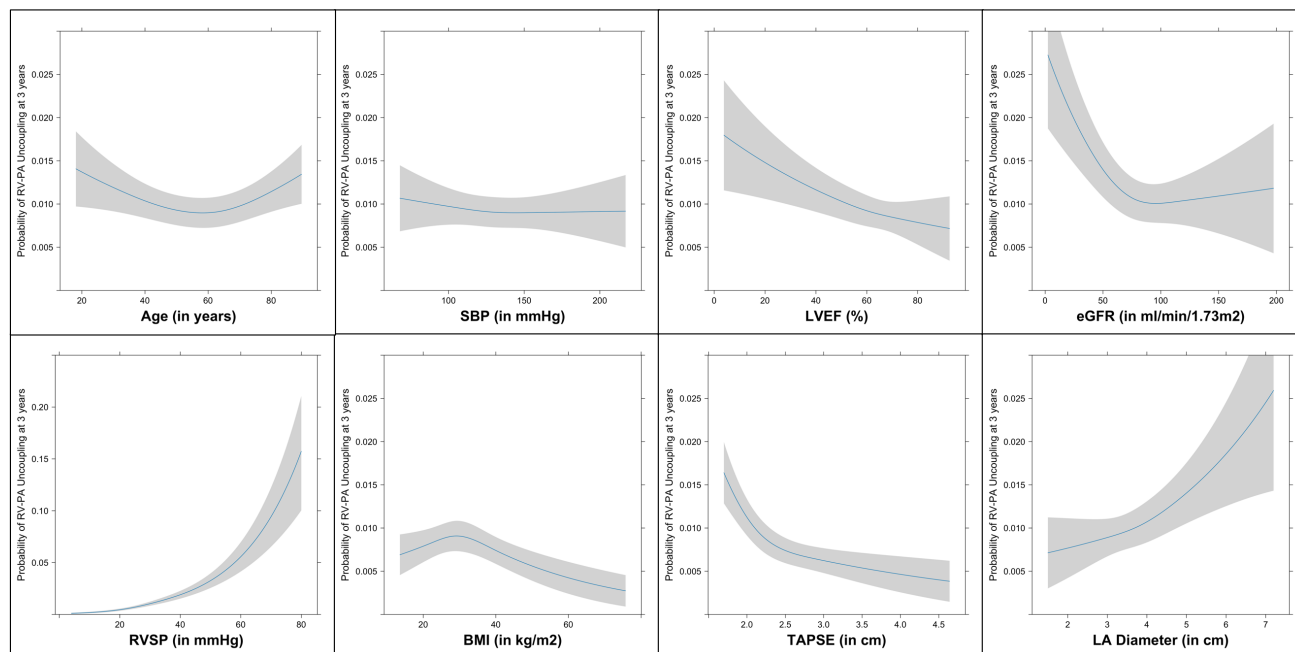
eFigure 3: Associations between continuous variables and change in TAPSE

eFigure 3 displays the model-adjusted association between continuous baseline covariates and the outcome of change in TAPSE as restricted cubic splines with 3 knots. The Y-axis displays the change in TAPSE and the x-axis displays the range of covariate values with the gray area representing a 95% confidence interval for the effect estimate at a given x-axis value.



eFigure 4: Associations between continuous variables and the probability of RV-PA Uncoupling at 3 years in the full cohort

eFigure 4 displays the model-adjusted association between continuous baseline covariates and the outcome of RV-PA uncoupling as restricted cubic splines with 3 knots within the Full Cohort. The Y-axis displays the probability of RV-PA uncoupling at 3 years of follow up and the x-axis displays the range of covariate values with the gray area representing a 95% confidence interval for the effect estimate at a given x-axis value. Relationships between continuous covariates and probability of RV-PA uncoupling (the shape of the curves) are similar to the relationships between continuous variables and probability of RV dysfunction (see Figure 3).



Supplemental References

1. Lang RM, Badano LP, Victor MA, Afilalo J, Armstrong A, Ernande L, Flachskampf FA, Foster E, Goldstein SA, Kuznetsova T, Lancellotti P, Muraru D, Picard MH, Retzschel ER, Rudski L, Spencer KT, Tsang W, Voigt JU. Recommendations for cardiac chamber quantification by echocardiography in adults: an update from the American Society of Echocardiography and the European Association of Cardiovascular Imaging. *J Am Soc Echocardiogr*. 2015;28:1-39.e14.
2. Lam CSP, Borlaug BA, Kane GC, Enders FT, Rodeheffer RJ, Redfield MM. Age-associated increases in pulmonary artery systolic pressure in the general population. *Circulation*. 2009;119:2663–2670.
3. Choudhary G, Jankowich M, Wu WC. Elevated pulmonary artery systolic pressure predicts heart failure admissions in African Americans jackson heart study. *Circ Heart Fail*. 2014;7:558–564.