

Supplementary figures S1-S8

Hospital environments harbor chlorhexidine tolerant bacteria potentially linked to chlorhexidine persistence in the environment

Jiaxian Shen¹, Yuhan Weng¹, Tyler Shimada¹, Meghana Karan¹, Andrew Watson¹, Rachel L. Medernach², Vincent B. Young³, Mary K. Hayden², Erica M. Hartmann^{1,4,5,*}

¹Department of Civil and Environmental Engineering, McCormick School of Engineering, Northwestern University, USA

²Division of Infectious Diseases, Department of Internal Medicine, Rush University Medical Center, USA

³Department of Internal Medicine/Division of Infectious Diseases, Department of Microbiology & Immunology, University of Michigan Medical School, USA

⁴Center for Synthetic Biology, Northwestern University, USA

⁵Department of Medicine/Division of Pulmonary Medicine, Feinberg School of Medicine, Northwestern University, USA

*Correspondence: Erica M. Hartmann; 2145 Sheridan Road, Tech A322, Evanston, IL 60208; Email: erica.hartmann@northwestern.edu; Tel: 847-467-4528

Supplementary information includes 8 figures and 9 tables.

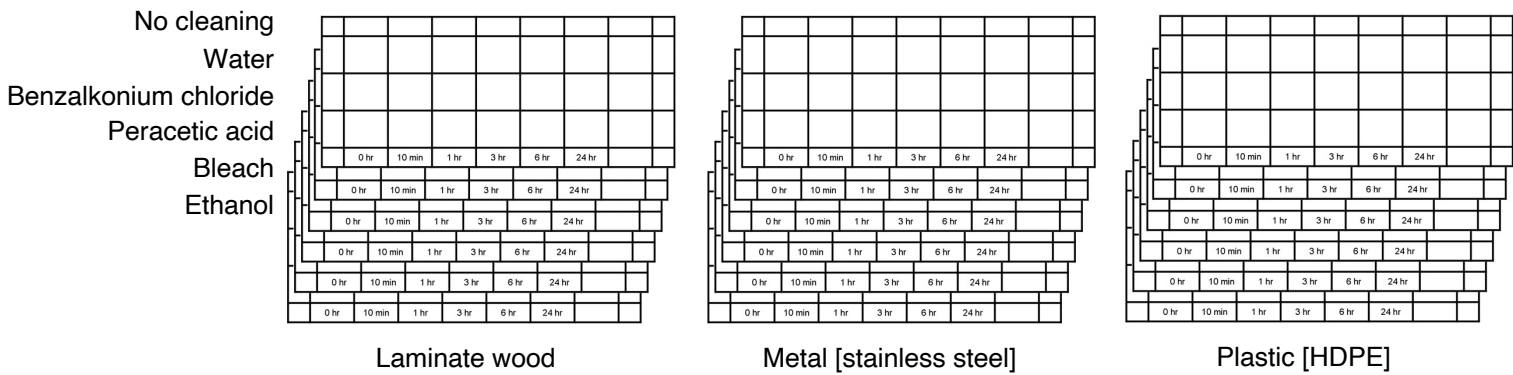
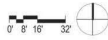
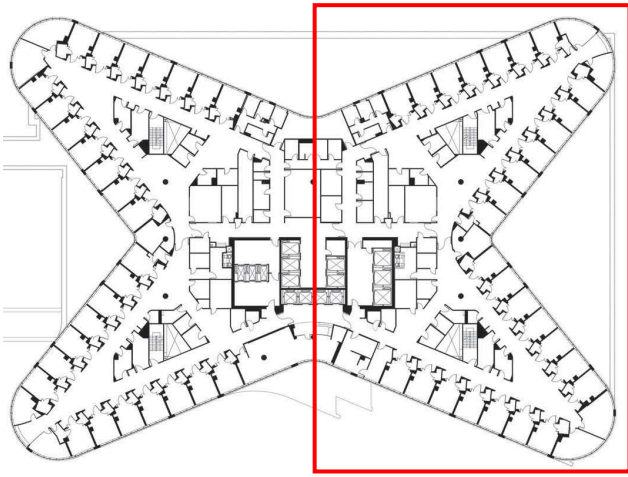


Fig. S1 Coupons used in the microcosm experiments examining chlorhexidine persistence. Grids on the coupons indicate specific swabbing sites.

a



b

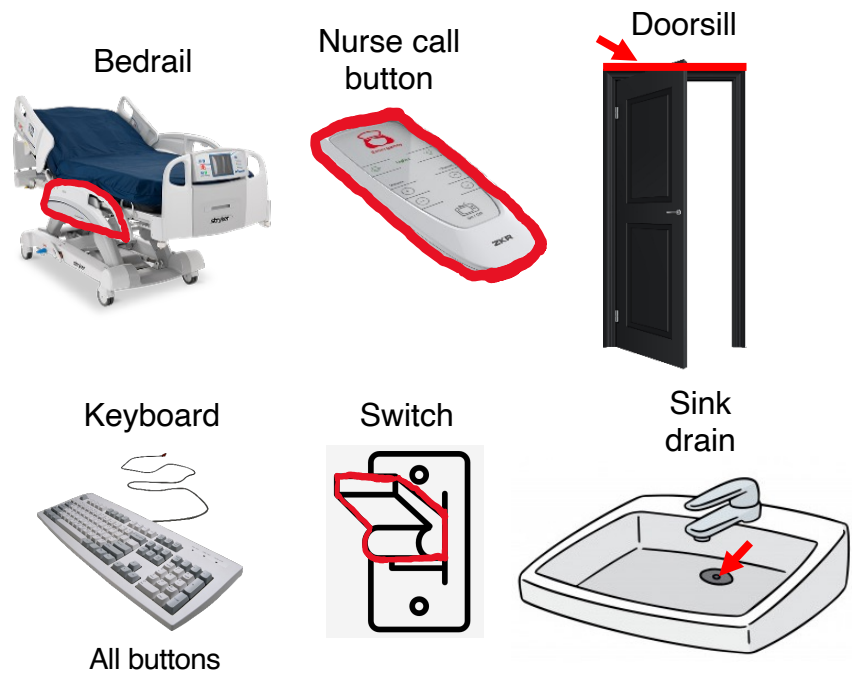


Fig. S2 a) Floor plan of the Medical Intensive Care Unit at the sampled hospital. b) Illustrations of the swabbed area for the sampled environmental locations.

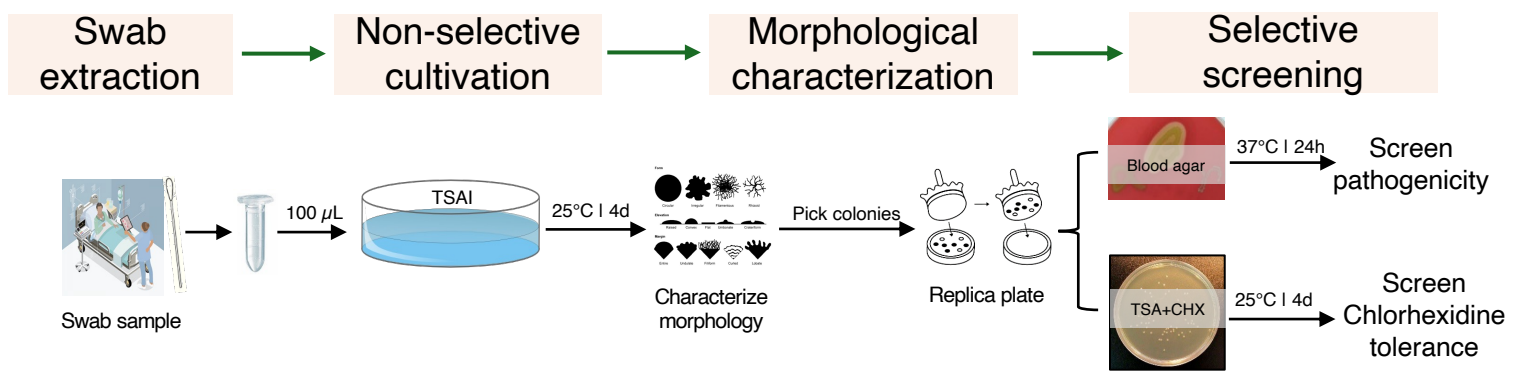


Fig. S3 Cultivation and screening pipeline. TSAI is tryptic soy agar (TSA) supplemented with 4 mg/L itraconazole. TSA+CHX is TSA containing 10.56 µg/mL chlorhexidine powder (equivalent to 18.75 µg/mL CHG).

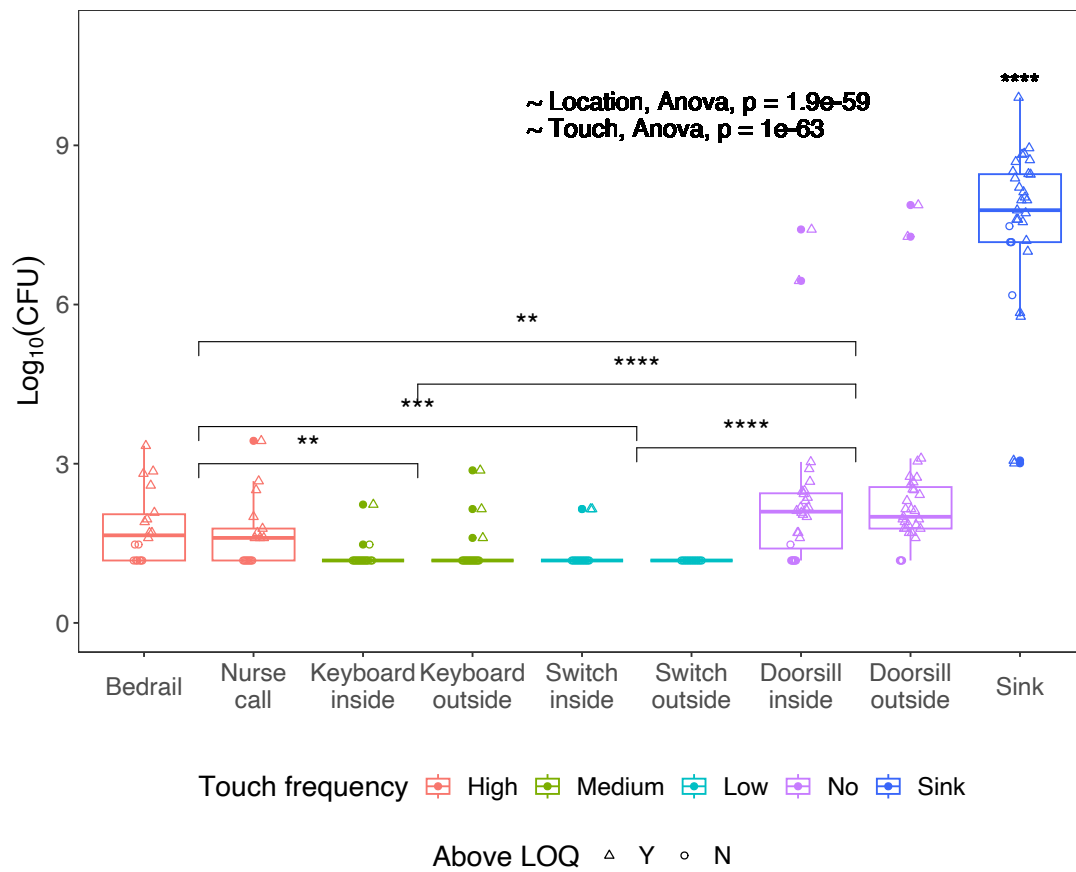


Fig. S4 Absolute bioburden of bacteria (\log_{10} CFU) in the entirety of the dry surfaces and by swabbing the proximal sink drain. The bacteria CFUs were not normalized by sampling area. Differences between groups were determined by unpaired t -tests with the Benjamini-Hochberg adjustment. To avoid mis-interpreting data with small colony counts, we empirically set the limit of quantification (LOQ) of our culture efforts as colony counts = 3. Values below this threshold were recorded as half of LOQ (i.e., 1.5). Nurse call button is abbreviated as nurse call in the figure.

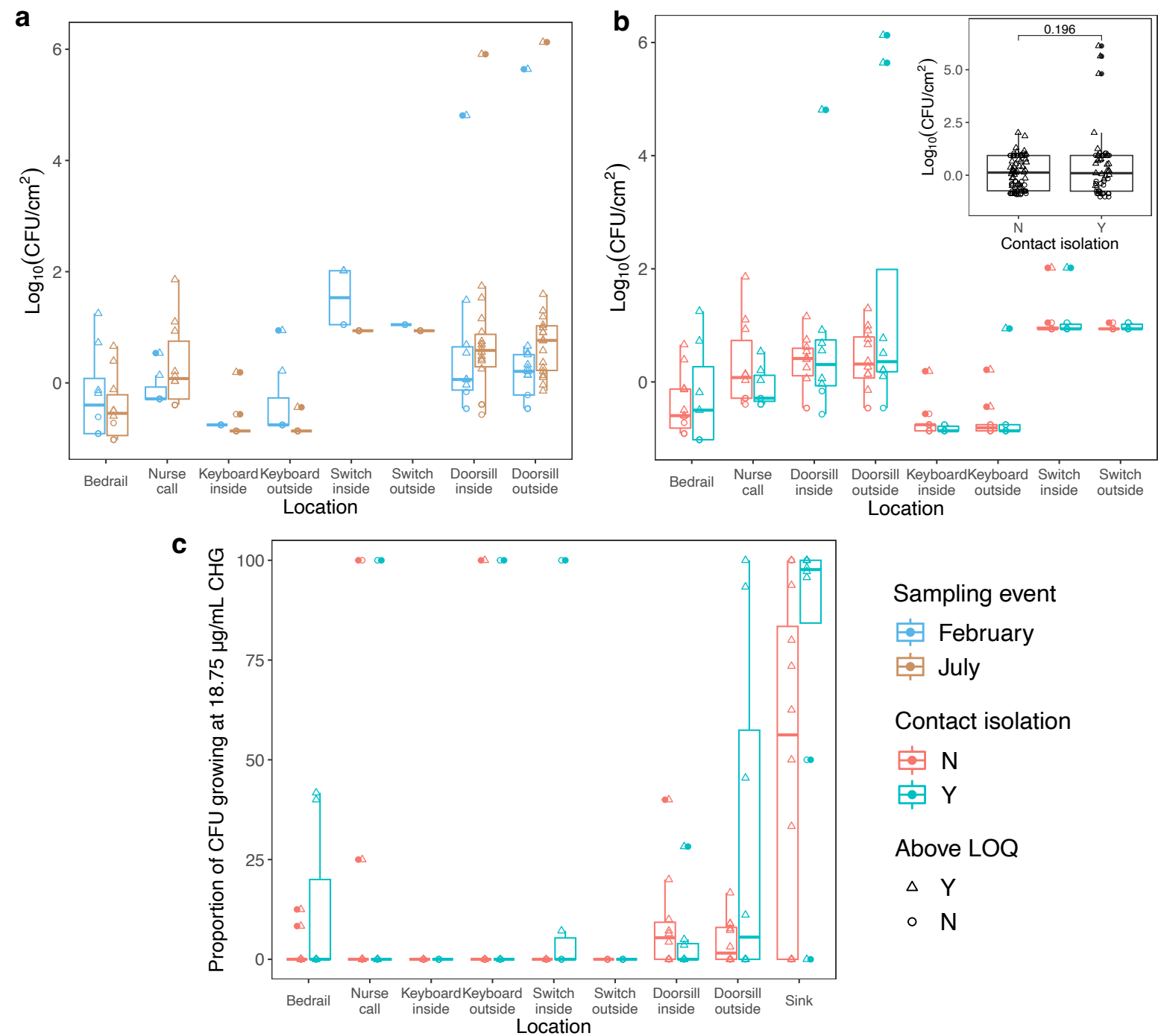
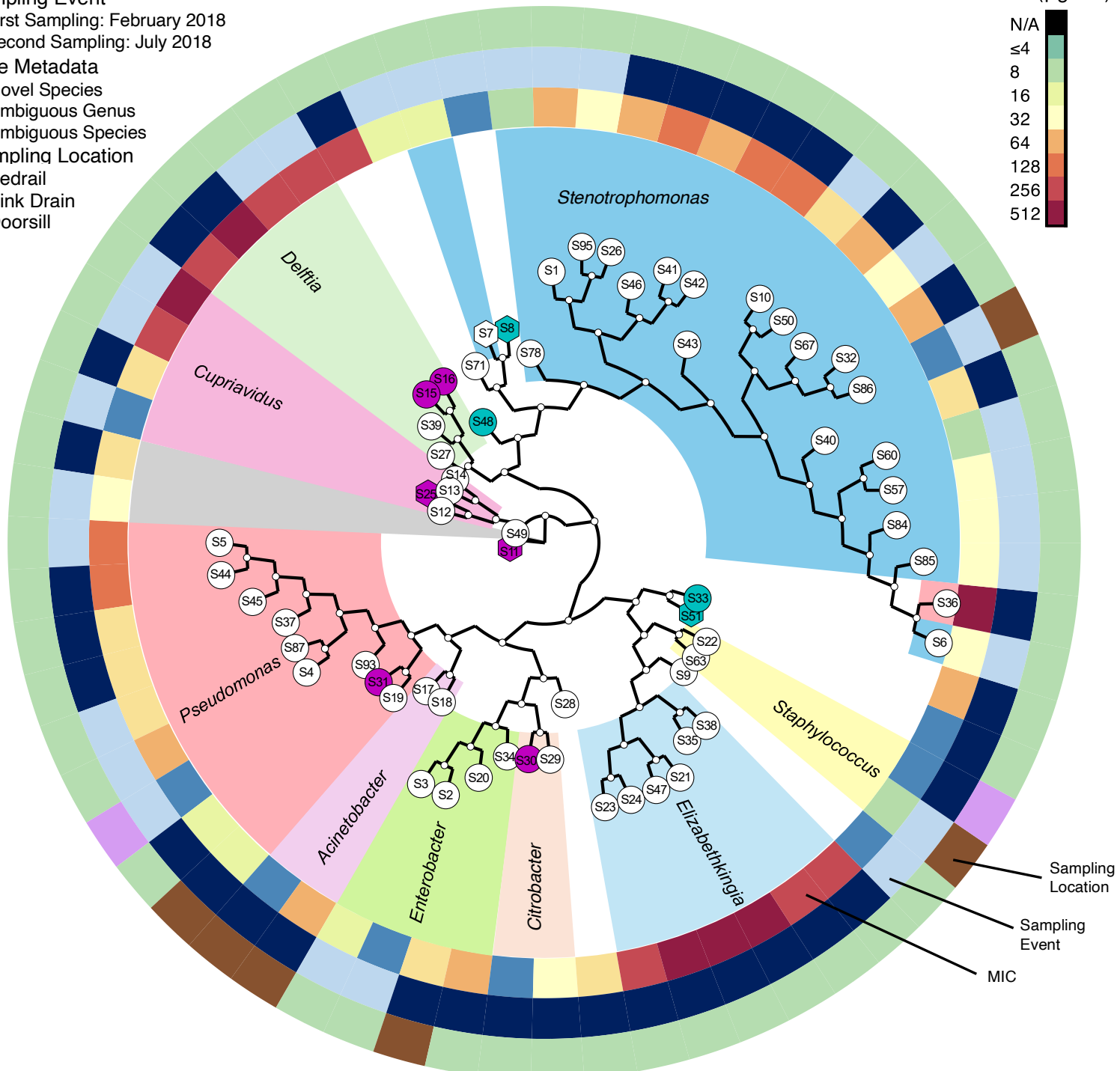
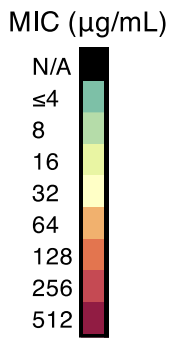


Fig. S5 No significant differences were observed in: **a)** Unit area bioburden of bacteria between the two sampling seasons, **b)** Unit area bioburden of bacteria between patient rooms with contact isolation and those without, and **c)** Proportions of CHG-tolerant bacteria (tolerating $18.75 \mu\text{g}/\text{mL}$ CHG at 25°C) between contact isolation levels of patient rooms. Cultivation temperature was 25°C for all cases. Nurse call button is abbreviated as nurse call in the figure.

- Sampling Event**
 ● First Sampling: February 2018
 ● Second Sampling: July 2018
Tree Metadata
 ● Novel Species
 ● Ambiguous Genus
 ● Ambiguous Species
Sampling Location
 ● Bedrail
 ● Sink Drain
 ● Doorsill



Sampling Location
 Sampling Event
 MIC

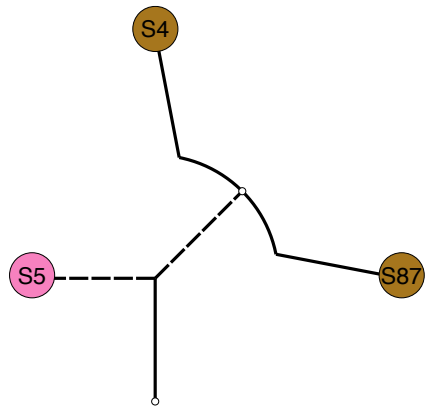
S49 *Achromobacter aegrifaciens*
 S17 *Acinetobacter radioresistens*
 S18 *Acinetobacter radioresistens*
 S30 *Citrobacter amalonicus* or *Citrobacter freundii*
 S29 *Citrobacter freundii*
 S13 *Cupriavidus metallidurans*
 S14 *Cupriavidus metallidurans*
 S12 *Cupriavidus pauculus*
 S27 *Delftia tsuruhatensis*
 S39 *Delftia tsuruhatensis*
 S15 *Delftia tsuruhatensis* or *Delftia acidovorans*
 S16 *Delftia tsuruhatensis* or *Delftia acidovorans*
 S48 *Delftia tsuruhatensis*, *Delftia acidovorans* or *Stenotrophomonas maltophilia*
 S21 *Elizabethkingia miricola*
 S23 *Elizabethkingia miricola*
 S24 *Elizabethkingia miricola*
 S35 *Elizabethkingia miricola*
 S36 *Elizabethkingia miricola*
 S38 *Elizabethkingia miricola*
 S47 *Elizabethkingia miricola*
 S34 *Enterobacter asburiae*

S20: *Enterobacter hormaechei*
 S2: *Enterobacter kobei*
 S3: *Enterobacter kobei*
 S28: *Klebsiella michiganensis*
 S33: *Ochrobactrum anthropi* or *Brucella anthrapi*
 S4: *Pseudomonas aeruginosa*
 S5: *Pseudomonas aeruginosa*
 S37: *Pseudomonas aeruginosa*
 S44: *Pseudomonas aeruginosa*
 S45: *Pseudomonas aeruginosa*
 S87: *Pseudomonas aeruginosa*
 S93: *Pseudomonas azotifigens*
 S19: *Pseudomonas putida*
 S71: *Pseudomonas stutzeri*
 S9: *Sphingobacterium siyangense*
 S22: *Staphylococcus debuckii*
 S63: *Staphylococcus epidermidis*
 S1: *Stenotrophomonas maltophilia*
 S6: *Stenotrophomonas maltophilia*
 S10: *Stenotrophomonas maltophilia*
 S26: *Stenotrophomonas maltophilia*

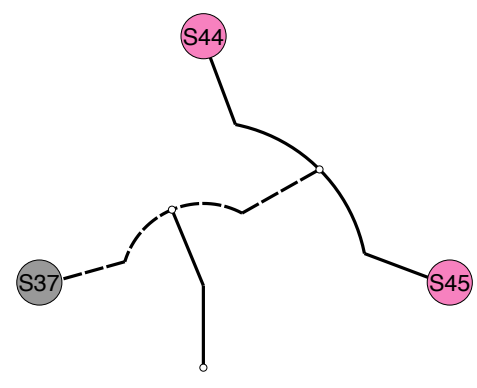
S32: *Stenotrophomonas maltophilia*
 S40: *Stenotrophomonas maltophilia*
 S41: *Stenotrophomonas maltophilia*
 S42: *Stenotrophomonas maltophilia*
 S43: *Stenotrophomonas maltophilia*
 S46: *Stenotrophomonas maltophilia*
 S50: *Stenotrophomonas maltophilia*
 S57: *Stenotrophomonas maltophilia*
 S60: *Stenotrophomonas maltophilia*
 S67: *Stenotrophomonas maltophilia*
 S78: *Stenotrophomonas maltophilia*
 S84: *Stenotrophomonas maltophilia*
 S85: *Stenotrophomonas maltophilia*
 S86: *Stenotrophomonas maltophilia*
 S95: *Stenotrophomonas maltophilia*
 S51: novel species, f_Rhizobiaceae, g_Pseudorhizobium or g_Rhizobium
 S8: novel species, f_Xanthomonadaceae, g_Stenotrophomonas
 S11: novel species, g_Achromobacter
 S25: novel species, g_Cupriavidus
 S7: novel species, g_Stenotrophomonas
 S31: undetermined species, g_Pseudomonas

Fig. S6 A phylogenetic tree of all sequenced isolates.

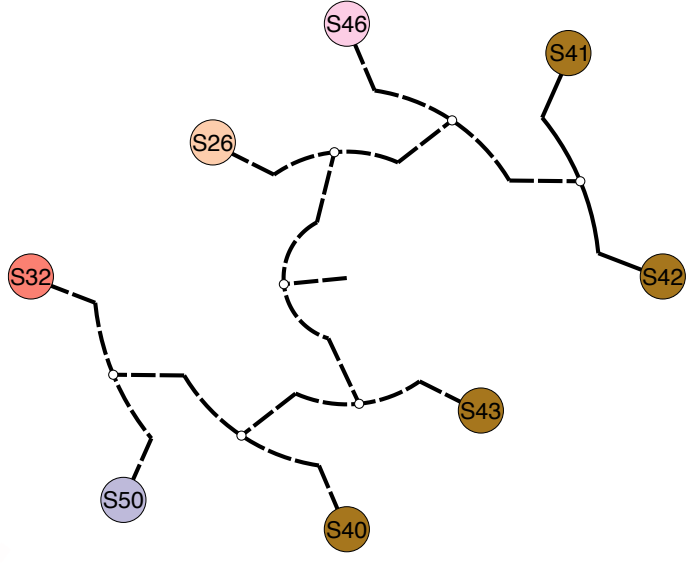
■ *P. aeruginosa* (sampled in February)



■ *P. aeruginosa* (sampled in July)



■ *S. maltophilia* (sampled in July)



■ *D. tsuruhatensis* (sampled in July)

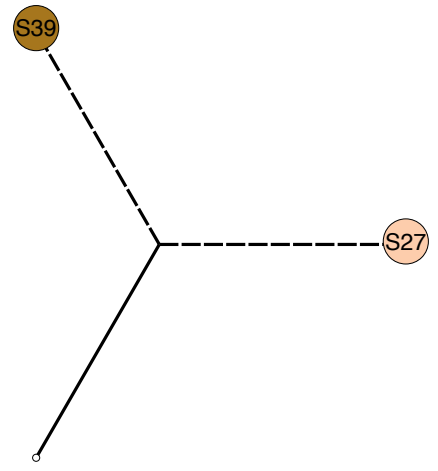


Fig. S7 Potential dissemination of opportunistic pathogens across multiple MICU rooms. Patient rooms were deidentified. Each panel shows one species with multiple isolates detected in sink drains of different MICU rooms during the same sampling event.

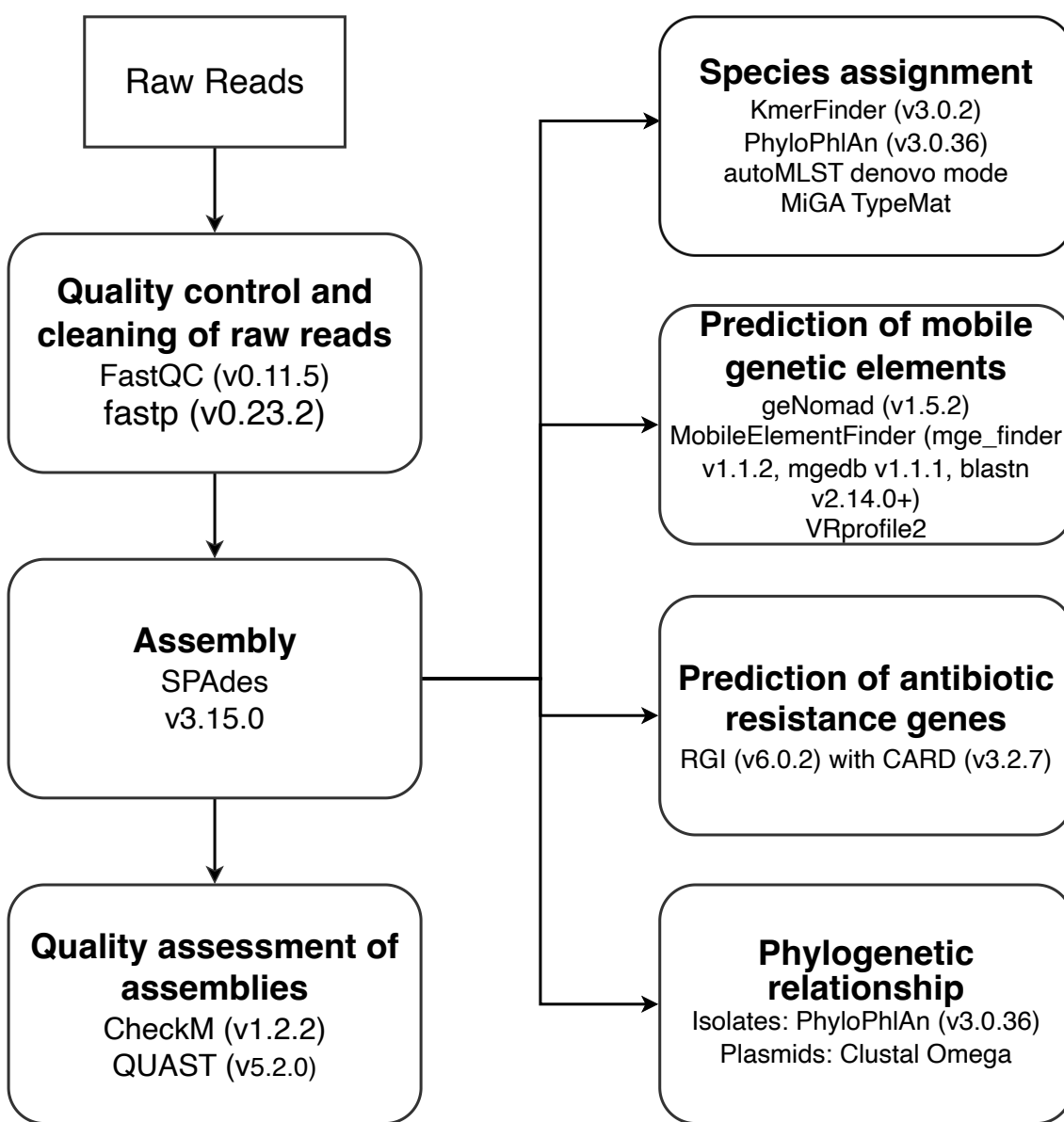


Fig. S8 Analysis pipeline of whole-genome sequences.