

1 **Adherence to a Mediterranean diet and leisure-time physical activity are protective**  
2 **factors against the initiation of antidepressant, anxiolytic, antipsychotic, and**  
3 **antiseizure drug use in older adults: a cohort study**

4  
5 Marta H. Hernandez<sup>1</sup>, Eleonora Fornara<sup>1</sup>, Camille Lassale<sup>2,3,4</sup>, Olga Castañer<sup>5,6</sup>, Ramón  
6 Estruch<sup>4,7,8</sup>, Emilio Ros<sup>4,7,9</sup>, Miguel Ángel Martínez-González<sup>4,10,11,12</sup>, Dolores Corella<sup>4,13</sup>, Nancy  
7 Babio<sup>4,14,15</sup>, José Lapetra<sup>4,16</sup>, Enrique Gómez-Gracia<sup>17</sup>, Fernando Arós<sup>4,18</sup>, Miquel Fiol<sup>4,19</sup>, Lluís  
8 Serra-Majem<sup>4,20,21</sup>, Antoni Riera-Mestre<sup>4,22,23</sup>, Alfredo Gea<sup>4,10,11</sup>, Carolina Ortega-Azorín<sup>4,13</sup>,  
9 Andrés Díaz-López<sup>4,14,15</sup>, Montserrat Fitó<sup>4,5</sup>, Álvaro Hernáez<sup>1,24,25,26</sup>

10

- 11 1. Blanquerna School of Health Sciences, Universitat Ramon Llull, Barcelona, Spain
- 12 2. Barcelona Institute for Global Health (ISGlobal), Barcelona, Spain
- 13 3. Universitat Pompeu Fabra (UPF), Barcelona, Spain
- 14 4. Consorcio CIBER, M.P. de Fisiopatología de la Obesidad y Nutrición (CIBEROBN),  
15 Instituto de Salud Carlos III, Madrid, Spain
- 16 5. Cardiovascular Risk and Nutrition Research Group, Hospital del Mar Research Institute  
17 (IMIM), Barcelona, Spain
- 18 6. Consorcio CIBER, M.P. de Fisiopatología de Epidemiología y Salud Pública  
19 (CIBERESP), Instituto de Salud Carlos III, Madrid, Spain
- 20 7. August Pi i Sunyer Biomedical Research Institute (IDIBAPS), Barcelona, Spain.
- 21 8. Internal Medicine Service, Hospital Clinic, Barcelona, Spain
- 22 9. Lipid Clinic, Endocrinology and Nutrition Service, Hospital Clínic, Barcelona, Spain
- 23 10. Department of Preventive Medicine and Public Health, Universidad de Navarra,  
24 Pamplona, Spain
- 25 11. Instituto de Investigación Sanitaria de Navarra (IdiSNA), Pamplona, Spain
- 26 12. Department of Nutrition, Harvard TH Chan School of Public Health, Boston, USA
- 27 13. Department of Preventive Medicine, Universidad de Valencia, Valencia, Spain

NOTE: This preprint reports new research that has not been certified by peer review and should not be used to guide clinical practice.

- 28 14. Unitat de Nutrició Humana, Departament de Bioquímica i Biotecnologia, Universitat  
29 Rovira i Virgili, Reus, Spain
- 30 15. Institut d'Investigació Sanitària Pere Virgili, Reus, Spain
- 31 16. Department of Family Medicine-Research Unit, Distrito Sanitario Atención Primaria  
32 Sevilla, Sevilla, Spain
- 33 17. Department of Public Health and Psychiatry, Universidad de Málaga, Málaga, Spain
- 34 18. Department of Cardiology, Hospital Universitario de Álava, Vitoria, Spain
- 35 19. Health Research Institute of the Balearic Islands (IdISBa), Hospital Son Espases,  
36 Palma de Mallorca, Spain
- 37 20. Instituto de Investigaciones Biomédicas y Sanitarias, Universidad de Las Palmas de  
38 Gran Canaria, Las Palmas, Spain
- 39 21. Centro Hospitalario Universitario Insular Materno Infantil, Servicio Canario de Salud,  
40 Las Palmas, Spain
- 41 22. Lipids and Vascular Risk Unit, Internal Medicine, Hospital Universitario de Bellvitge,  
42 L'Hospitalet de Llobregat, Spain
- 43 23. Bellvitge Biomedical Research Institute (IDIBELL), L'Hospitalet de Llobregat, Spain
- 44 24. REGICOR Study Group, Hospital del Mar Research Institute (IMIM), Barcelona, Spain
- 45 25. Consorcio CIBER, M.P. de Enfermedades Cardiovasculares (CIBERCV), Instituto de  
46 Salud Carlos III, Madrid, Spain
- 47 26. Centre for Fertility and Health, Norwegian Institute of Public Health, Oslo, Norway

48

49 **Corresponding author**

50 Marta H. Hernández, PharmD, PhD

51 Blanquerna School of Health Sciences, Universitat Ramon Llull, Barcelona, Spain

52 Telephone: +34 93 253 32 56

53 e-mail: [martahh1@blanquerna.url.edu](mailto:martahh1@blanquerna.url.edu)

54 Address: Blanquerna School of Health Sciences, Carrer Padilla 326-332, 08025, Barcelona,

55 Spain

56 **ABSTRACT**

57

58 **Background.** We aimed to investigate the association between long-term adherence to  
59 MedDiet and LTPA levels and the initiation of antidepressant, anxiolytic, antipsychotic and  
60 antiseizure medication in older adults.

61 **Methods.** We assessed the relationship between the cumulative average of MedDiet  
62 adherence and LTPA and the initiation of medications in the PREvención con Dieta  
63 MEDiterránea (PREDIMED) study. Sample sizes ranged from 5,940 for anxiolytics to 6,896 for  
64 antipsychotics. Associations between the cumulative average of MedDiet adherence (per each  
65 one-point increase in the adherence score) and LTPA (per each increase in 20 metabolic  
66 equivalents of task-minute/day [METs-min/day]) with drug initiation were studied by  
67 multivariable Cox regressions (covariates: age, sex, PREDIMED intervention group,  
68 recruitment site, education, smoking habit, BMI, alcohol, and energy intake; multiple  
69 comparisons: Bonferroni method). We explored non-linear exposure-outcome associations  
70 using smoothed cubic splines and the interaction among both exposures.

71 **Results:** One-point increases in MedDiet adherence score were associated with 23-28% less  
72 initiation of antidepressants (hazard ratio [HR] 0.72, 95% confidence interval [CI] 0.67-0.77),  
73 anxiolytics (HR 0.75, 95%CI 0.70-0.81), antipsychotics (HR 0.77, 95%CI 0.65-0.91), and  
74 antiseizure drugs (HR 0.77, 95%CI 0.69-0.85). Associations for anxiolytics and antiseizure  
75 drugs were particularly strong among participants with poor MedDiet adherence. Relationships  
76 between LTPA and initiation of antidepressant and anxiolytic drug use were non-linear. Among  
77 participants with the lowest LTPA values (0-150 METs-min/day), 20 METs-min/day increases  
78 were associated with 20% less risk of initiating antidepressant use (HR 0.80, 95%CI 0.75-0.86)  
79 and 15% less risk of initiating anxiolytic medication (HR 0.85, 95%CI 0.79-0.90). 20 METs-  
80 min/day increases were linearly associated with less initiation of antiseizure drugs (HR 0.96,  
81 95%CI 0.94-0.99), and no clear associations were found for antipsychotic drugs. Individuals  
82 with high MedDiet adherence ( $\geq 10$  adherence points) and high LTPA levels ( $\geq 150$  METs-  
83 min/day) showed 42-59% less risk of initiating psychoactive drugs (antidepressants: HR 0.41,

84 95%CI 0.30-0.56; anxiolytics: HR 0.54, 95%CI 0.41-0.71; antipsychotics: HR 0.45, 95%CI  
85 0.21-0.95; antiseizure drugs: HR 0.58, 95%CI 0.37-0.90). The combination was additive for  
86 antidepressants, antipsychotics and antiseizure drugs and synergistic for anxiolytics ( $p$ -  
87 interaction = 0.076).

88 **Conclusions:** Sustained adherence to MedDiet and LTPA were linked to lower initiation of  
89 psychoactive drugs in older adults.

90

#### 91 **KEYWORDS**

92 Mediterranean diet; leisure-time physical activity; antidepressants; anxiolytics; antipsychotics;  
93 antiseizure drugs

94

#### 95 **ABBREVIATIONS**

96 HR: hazard ratio

97 LTPA: leisure-time physical activity

98 MedDiet: Mediterranean Diet

99 METs-min/day: metabolic equivalents of task per minute per day

100 PREDIMED: PREvención con Dieta MEDiterránea

## 101 INTRODUCTION

102

103 Mental disorders represent a major burden for patients and society as they are leading causes  
104 of disability [1] and are associated with increased mortality rates [2,3]. This burden of morbidity  
105 and mortality is on the rise across all age, sex and socioeconomic levels [1,4]. The primary  
106 pharmacological treatments for these conditions typically involve antidepressants, anxiolytics,  
107 and, to a lesser extent, some antipsychotic and antiseizure medications. Older adults ( $\geq 65$   
108 years old) in European countries show a relevant prevalence of psychoactive drug use  
109 according to the latest National Health Surveys [5,6]. However, despite significant  
110 advancements, conventional treatments exhibit limited effectiveness and some adverse effects  
111 [7–9]. Older adults face greater risks when exposed to these drugs due to characteristics in  
112 this population such as changes in pharmacokinetics, polypharmacy, cognitive impairment,  
113 and frailty [10]. Consequently, patients and clinicians are increasingly interested in exploring  
114 complementary methods, such as adopting healthy dietary patterns or engaging in physical  
115 activity, to reduce the burden of mental disorders in the elderly population or, at least, delay  
116 and limit the initiation of psychoactive medication use [11,12].

117 Lifestyle psychiatry is a complex field due to the potential for reverse causation: an  
118 unhealthy lifestyle may increase the incidence of mental disorders and neurological conditions,  
119 which in turn are associated with a decline in dietary quality and reduced physical activity [13].  
120 However, recent meta-analyses of observational data have provided evidence of the  
121 association between healthy diets and lower risk of depression [14] and of physical activity in  
122 warding off mental disorders [13]. Healthy dietary patterns such as the Mediterranean diet  
123 (MedDiet) and leisure-time physical activity (LTPA) have shown a protective potential on  
124 several risk factors for psychiatric and mental disorders such as oxidative stress, low-grade  
125 inflammation, gut microbiome composition, blood pressure, and metabolic indicators [15–17]  
126 [18–21]. Nevertheless, there is a scarcity of research investigating the association between  
127 MedDiet and LTPA and the incidence of clinical outcomes related to mental disorders such as  
128 the initiation of psychoactive medication use, using prospective study designs. Therefore, the

129 main objective of this study is to investigate the association between long-term adherence to  
130 MedDiet and LTPA (individually and combined) and the initiation of psychoactive medication  
131 in older adults at high cardiovascular risk.

132

## 133 **MATERIALS AND METHODS**

134

### 135 *Study population*

136 This study is an observational, prospective analysis utilizing data from participants enrolled in  
137 the PREvención con Dieta MEDiterránea (PREDIMED) trial. The PREDIMED study was a  
138 multicenter, randomized controlled trial conducted in Spain from 2003 to 2010. Its principal  
139 objective was to assess the effects of a nutritional intervention based on a MedDiet  
140 supplemented with extra-virgin olive oil and mixed nuts, compared to a low-fat control diet, on  
141 the primary prevention of significant cardiovascular events in older adults at high  
142 cardiovascular risk. [22]. Eligible individuals were women (aged 60-80 years) and men (aged  
143 55-80 years) without cardiovascular disease at enrolment but with type 2 diabetes or at least  
144 three of the following risk factors: hypertension (systolic blood pressure  $\geq 140$  mmHg, diastolic  
145 blood pressure  $\geq 90$  mmHg, use of antihypertensive drugs), high concentrations of low-density  
146 lipoprotein cholesterol ( $\geq 160$  mg/dL), low levels of high-density lipoprotein cholesterol  $< 50$   
147 mg/dL in women, ( $< 40$  mg/dL in men), body mass index  $> 25$  kg/m<sup>2</sup>, smoking, and family history  
148 of premature coronary disease ( $< 55$  years old in first degree male relatives,  $< 65$  years old in  
149 first degree female relatives).

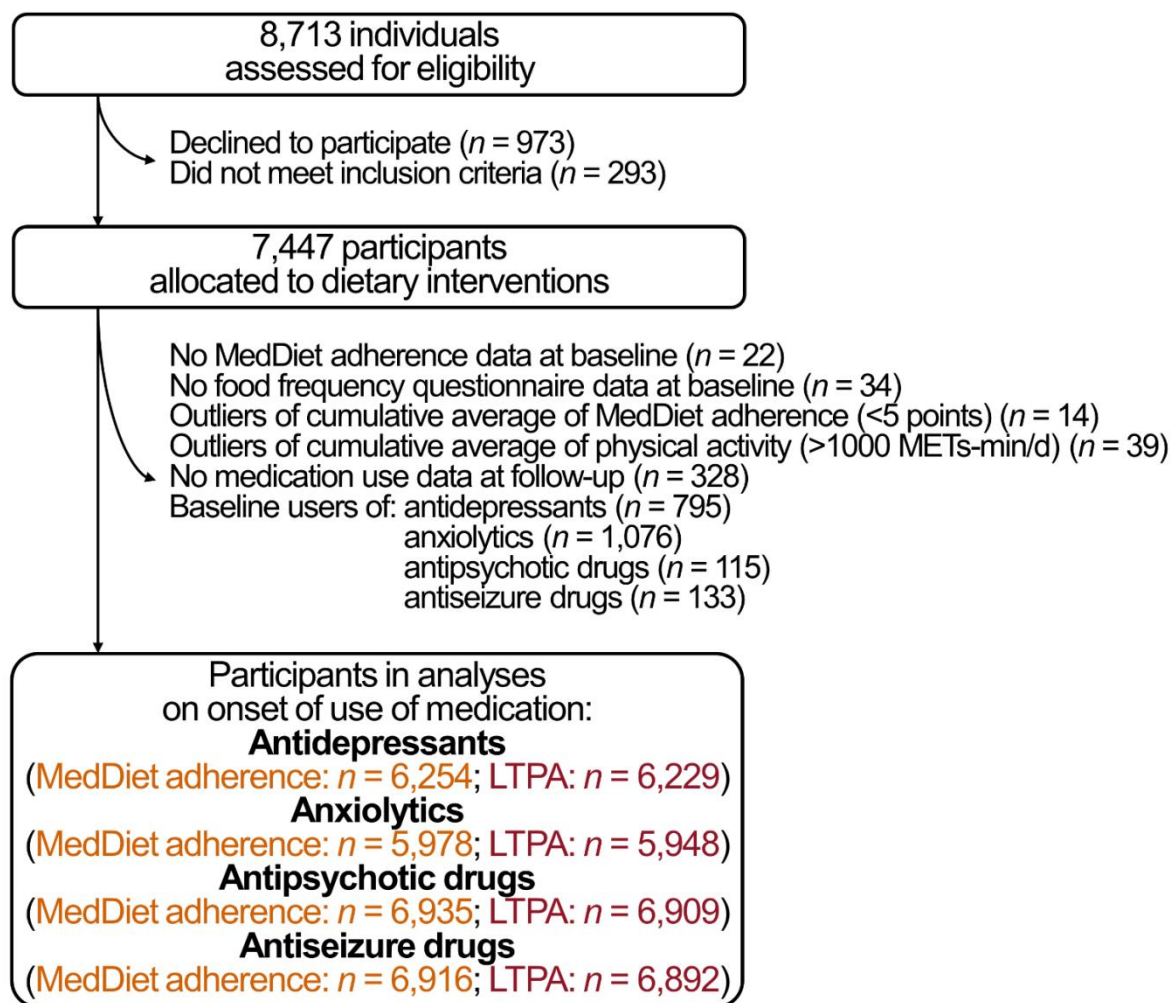
150 For the present investigation, we used the PREDIMED data as an observational  
151 prospective cohort. We therefore adjusted all analyses for intervention groups. Of the 7,447  
152 participants, we first excluded participants with no baseline data on MedDiet adherence ( $n =$   
153 22), no data from food frequency questionnaire (necessary for the estimated alcohol and  
154 energy intake,  $n = 39$ ), outliers of the MedDiet adherence longitudinal average ( $n = 14$ ), outliers  
155 of the LTPA longitudinal average ( $n = 39$ ), and no medication use data ( $n = 328$ ). Analyses of  
156 initiation of psychoactive drugs were performed in non-users at study baseline. Therefore, we

157 also excluded users of each specific drug at baseline in the respective analyses. The study  
158 flow chart with the definitive sample sizes for all analyses is available in **Figure 1**. Our study is  
159 presented following the STrengthening the Reporting of Observational Studies in Epidemiology  
160 guidelines for reporting cohort studies.

161

162 **Figure 1.** Flow chart.

163



164

165 *Exposures: adherence to a Mediterranean diet and leisure-time physical activity*

166 At each visit, adherence to a MedDiet was assessed using the MedDiet adherence score. This  
167 score was based on a screener designed to evaluate the adherence to 14 dietary traits of the  
168 MedDiet, validated for Spanish adults [23]. The consumption of the following items contributed



169 positively: (1) use of olive oil as main fat for cooking/seasoning; (2)  $\geq 4$  tablespoons/day of olive  
170 oil; (3)  $\geq 3$  servings/week of mixed nuts (30 g); (4)  $\geq 2$  servings/day of vegetables; (5)  $\geq 3$   
171 servings/day of fruit; (6)  $\geq 3$  servings/week of legumes (150 g, boiled); (7)  $\geq 3$  servings/week of  
172 fish or seafood; (8)  $\geq 2$  servings/week of “sofrito”-based dishes (recipes with a base of stir-fried  
173 onion, garlic, tomato/pepper, and herbs cooked in olive oil); (9) wine in moderation (100 mL/day  
174 on average, within meals); (10)  $< 1$  serving/day of red and processed meat; (11) preference of  
175 poultry and rabbit over red and processed meat; (12)  $< 1$  serving/day of butter, margarine, or  
176 cream; (13)  $< 1$  carbonated or sugar-sweetened beverage/day; and (14)  $< 2$  servings/week of  
177 non-homemade pastries or sweets [23].

178 The estimation of LTPA was conducted using the Minnesota Leisure-Time Physical  
179 Activity Questionnaire, validated in both Spanish men and women [24,25]. This questionnaire  
180 captured information on the frequency and duration of sixty-seven activities performed by  
181 participants over the course of the previous year. LTPA was quantified in metabolic equivalents  
182 of task-minute per day (METs-min/d) by multiplying the metabolic equivalents of task  
183 associated with each activity by its average duration in minutes per day.

184

#### 185 *Outcomes: initiation of use of psychoactive drugs*

186 During the baseline and yearly follow-up examinations, information was gathered on  
187 medication use. Using the list of all the drugs that were considered in each family of  
188 psychoactive drugs available in Spain in 2003-2010 with their respecting Anatomical  
189 Therapeutic Chemical codes available in the **Supplemental Material**, we created variables of  
190 use (yes/no) of antidepressants, anxiolytics, antipsychotics, and antiseizure drugs. We defined  
191 the incidence of the initiation of use of any antidepressant, anxiolytic, antipsychotic, and  
192 antiseizure drug among those who were non-users at baseline. Initiation of use referred to the  
193 commencement of medication use that persisted for a minimum of three subsequent follow-up  
194 visits and drug use was unreported in only one visit between these three [26].

195

196



197 *Other variables*

198 Trained professionals gathered initial data on various factors, including age (continuous), sex,  
199 educational attainment (primary/secondary/higher/unavailable), the prevalence of  
200 cardiovascular risk factors at baseline (diabetes, hypercholesterolemia, hypertriglyceridemia,  
201 and hypertension; yes/no), baseline body mass index (continuous), and baseline smoking  
202 status (never/former/current smoker) [22,27]. Using a validated 137-item semiquantitative food  
203 frequency questionnaire, we determined the alcohol consumption (in grams/day) and energy  
204 intake (in kilocalories/day) at baseline [27].

205

206 *Statistical analyses*

207 The characteristics of the participants are described using means and standard deviations for  
208 normally distributed continuous variables, medians and interquartile ranges for non-normally  
209 distributed continuous variables, and proportions for categorical variables, overall and across  
210 groups defined by MedDiet adherence (low [ $<10$  points] and high [ $\geq 10$  points]) and by LTPA  
211 levels (an arbitrary threshold for low [ $<100$  METs-min/day] and high levels [ $\geq 100$  METs-  
212 min/day]).

213 We examined the relationships between the cumulative mean of MedDiet adherence  
214 or LTPA levels and the risk of initiating psychoactive medication use (as hazard ratios, HR)  
215 using Cox proportional hazards regression models. The cumulative mean of MedDiet  
216 adherence or LTPA was calculated as the average of all MedDiet adherence scores or LTPA  
217 values up until the occurrence of the outcome (incident cases) or the last available study visit  
218 (non-cases). Participants with outlier values in the cumulative mean of MedDiet adherence  
219 score ( $<5$  points) or LTPA levels ( $>1000$  METs-min/day) were excluded from the analysis. The  
220 reference cut-point was set at the minimum value for each exposure variable (5 points for  
221 MedDiet adherence score and 0 METs-min/day for LTPA). The follow-up time for each event  
222 was the time elapsed between the date of entry into the study and the date of the event or end  
223 of follow-up (December 1, 2010), whichever came first. As these are non-acute events, we  
224 assume that the occurrence of the event is dated at the midpoint between the last visit at which

225 the volunteer was not treated with the medication and the first visit at which the treatment was  
226 registered[26,28,29]. The models were adjusted for sex, recruitment site, educational level (as  
227 strata variables), age, smoking habit, body mass index, alcohol consumption, energy intake,  
228 and intervention group. MedDiet adherence analyses were further adjusted for LTPA at  
229 baseline, while the LTPA analyses were further adjusted for MedDiet adherence score at  
230 baseline. To address intra-cluster correlations, robust variance estimators were used in all  
231 survival analyses considering as clusters the members of the same household [22]. Results  
232 were reported as HRs per each 1-point increase in MedDiet score and per each increase in 20  
233 METs-min/day for LTPA (equivalent to increasing 40 minutes/week of brisk walking or Pilates,  
234 or 30 minutes/week of dancing or aerobic classes). We corrected our findings in linear analyses  
235 for multiple comparisons (two exposures  $\times$  four outcomes = eight comparisons) by the  
236 Bonferroni method ( $p$ -value threshold  $< 0.00625$ ).

237 We also examined the potential non-linear relationships between the cumulative mean  
238 of MedDiet adherence or LTPA levels and the risk of initiating psychoactive medication use.  
239 Initially, we explored whether a model using smoothed cubic splines (with  $K+4$  degrees of  
240 freedom) to model the relationship between the exposure and the outcome. We used a  
241 likelihood ratio test to assess if this fitted the data better than a simple linear term. When the  
242 test was significant, we used smoothed cubic splines graphically present the associations [30].  
243 We also reported the association between MedDiet adherence or LTPA and the risk of drug  
244 initiation at the lowest part of the curves (after graphic inspection, for participants with MedDiet  
245 adherence scores ranging from 5 to 8 points and LTPA levels ranging from 0 to 150 METs-  
246 min/day).

247 Additionally, we investigated whether the combination of high MedDiet adherence ( $\geq 10$   
248 points [31]) and high LTPA levels ( $\geq 150$  MET-min/day, based on our findings, see below) was  
249 associated with a lower risk of drug use initiation, either additively or synergistically.  
250 Participants were classified into four groups: 1) low MedDiet adherence + low LTPA levels  
251 (reference group); 2) low MedDiet adherence + high LTPA levels; 3) high MedDiet adherence  
252 + low LTPA levels; and 4) high MedDiet adherence + high LTPA levels. We examined the

253 difference in the risk of drug use initiation for groups 2, 3, and 4 compared to the reference  
254 group using Cox proportional hazards regression models. To assess potential synergy, we  
255 applied a likelihood ratio test comparing models with and without the interaction term for  
256 “MedDiet adherence × LTPA levels.” A significant interaction would suggest that the  
257 combination of the two exposures is associated with a stronger relationship than expected from  
258 their independent associations.

259 We performed the analyses using the “survival” package in R Software (version 4.3.1).  
260 Code for data management and analysis is available in  
261 [https://github.com/alvarohernaez/MedDiet\\_LTPA\\_pschoactive\\_drugs](https://github.com/alvarohernaez/MedDiet_LTPA_pschoactive_drugs).

262 **RESULTS**

263

264 *Study population*

265 The participants had an average age of 67 years, 58% of them were women, 14% we current  
266 smokers and –as per the selection criteria– they had a high prevalence of cardiovascular risk  
267 factors at baseline: 83% hypertension, 72% hypercholesterolemia, 49% diabetes, 47% obesity,  
268 29% with hypertriglyceridemia (**Table 1**). Participants with a high adherence to a MedDiet and  
269 high LTPA levels were more likely to be men, to have higher education, lower prevalence of  
270 cardiovascular risk factors (such as diabetes, hypertriglyceridemia, hypertension, and obesity),  
271 and slightly higher intakes of energy and alcohol.

272 The analytical samples were as follows: for antidepressants,  $n = 6,215$ , with a median  
273 follow-up of 4.2 years and 7.9% became new users; for anxiolytics,  $n = 5,940$ , with a 4.2-year  
274 follow-up and 8.8% became new users; for antipsychotics,  $n = 6,896$ , with a 4.7-year follow-up  
275 and 1.1% became new users; for antiseizure medications,  $n = 6,878$ , with a 4.7-year follow-up  
276 and 2.8% became new users.

277 **Table 1.** Population description

	All participants	MedDiet adherence score (cumulative average)			LTPA levels (cumulative average)		
		Low	High	<i>p</i> -value	Low	High	<i>p</i> -value
Age, years (mean ± SD)	67.0 ± 6.17	67.2 ± 6.25	66.7 ± 6.07)	0.001	67.6 ± 6.50)	66.8 ± 6.05)	<0.001
Females ( <i>n</i> , %)	4,080 (57.8%)	2,277 (60.9%)	1,803 (54.2%)	<0.001	1,277 (75.3%)	2,803 (52.2%)	<0.001
Education:				0.001			<0.001
Primary ( <i>n</i> , %)	5,367 (76.0%)	2,895 (77.5%)	2,472 (74.3%)		1,344 (79.2%)	4,023 (75.0%)	
Secondary ( <i>n</i> , %)	1,066 (15.1%)	539 (14.4%)	527 (15.8%)		240 (14.1%)	826 (15.4%)	
Higher ( <i>n</i> , %)	503 (7.12%)	230 (6.16%)	273 (8.21%)		82 (4.83%)	421 (7.85%)	
Not available ( <i>n</i> , %)	127 (1.80%)	72 (1.93%)	55 (1.65%)		31 (1.83%)	96 (1.79%)	
Tobacco use:				0.001			<0.001
Never smokers ( <i>n</i> , %)	4,345 (61.5%)	2,356 (63.1%)	1,989 (59.8%)		1,194 (70.4%)	3,151 (58.7%)	
Ex-smokers ( <i>n</i> , %)	1,733 (24.5%)	848 (22.7%)	885 (26.6%)		293 (17.3%)	1,440 (26.8%)	
Current smokers ( <i>n</i> , %)	985 (13.9%)	532 (14.2%)	453 (13.6%)		210 (12.4%)	775 (14.4%)	
Type-II diabetes ( <i>n</i> , %)	3,442 (48.7%)	1,925 (51.5%)	1,517 (45.6%)	<0.001	862 (50.8%)	2,580 (48.1%)	0.055
Hypercholesterolemia	5,087	2,667	2,420	0.216	1,210	3,877	0.467

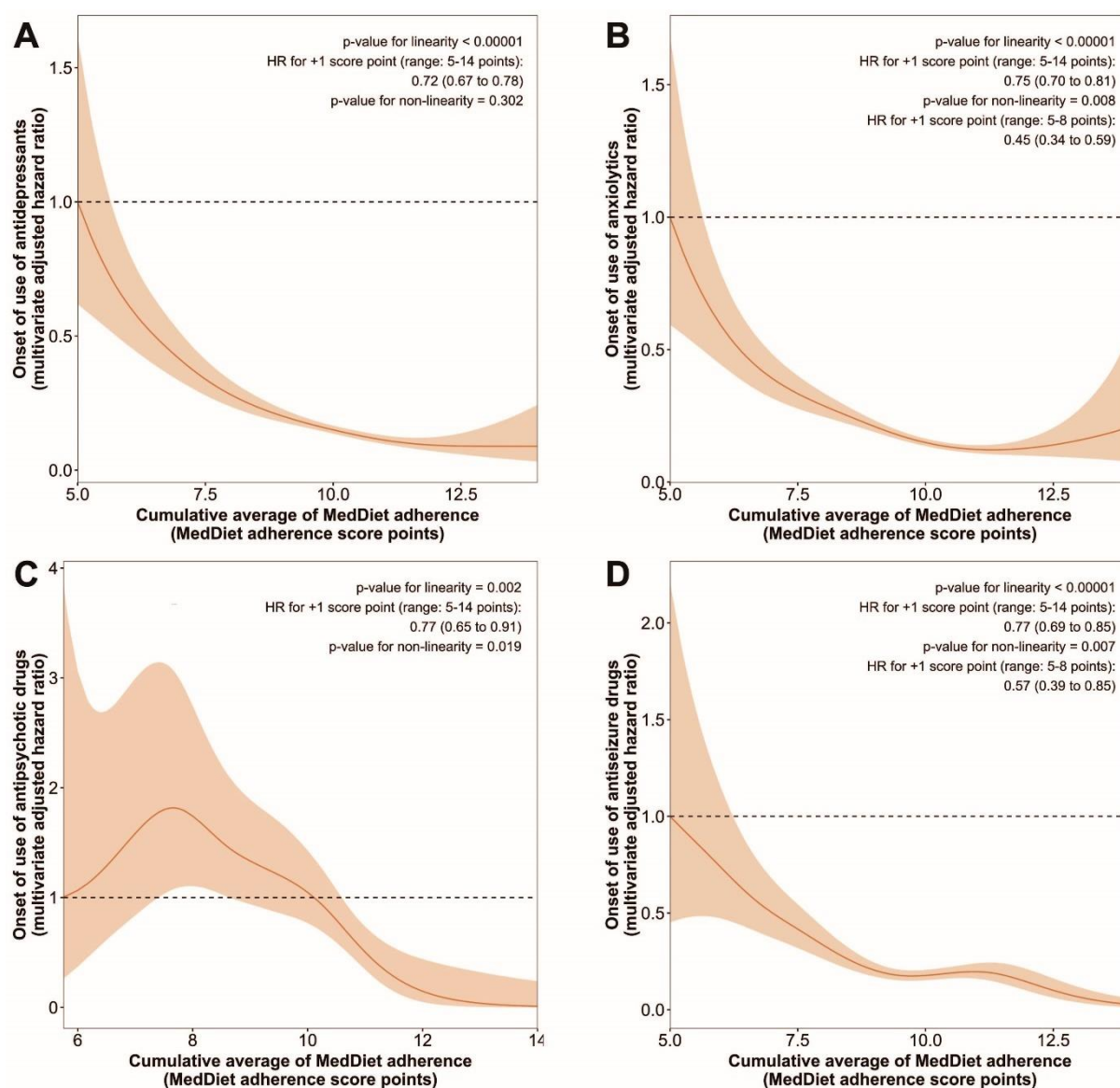
(n, %)	(72.0%)	(71.4%)	(72.7%)		(71.3%)	(72.3%)	
Hypertriglyceridemia	2,045	1,181	864		556	1,489	
(n, %)	(29.0%)	(31.6%)	(26.0%)	<0.001	(32.8%)	(27.7%)	<0.001
Hypertension	5,834	3,136	2,698		1,451	4,383	
(n, %)	(82.6%)	(83.9%)	(81.1%)	0.002	(85.5%)	(81.7%)	<0.001
BMI categories:				<0.001			<0.001
<25.0 kg/m <sup>2</sup>	523	237	286		90	433	
(n, %)	(7.40%)	(6.34%)	(8.60%)		(5.30%)	(8.07%)	
25.0-29.9 kg/m <sup>2</sup>	3,207	1,564	1,643		583	2,624	
(n, %)	(45.4%)	(41.9%)	(49.4%)		(34.4%)	(48.9%)	
≥30.0 kg/m <sup>2</sup>	3,333	1,935	1,398		1,024	2,309	
(n, %)	(47.2%)	(51.8%)	(42.0%)		(60.3%)	(43.0%)	
Alcohol, g/d	1.49	1.09	4.38	<0.001	0.68	2.17	<0.001
(median, 1 <sup>st</sup> -3 <sup>rd</sup> quartile)	[0.00;10.4]	[0.00;8.84]	[0.00;12.4]		[0.00;5.92]	[0.00;11.7]	
Energy, kcal/d	2,274	2,201	2,356	<0.001	2,239	2,285	0.009
(mean ± SD)	± 604	± 609	± 587		± 633	± 594	

278

279 *MedDiet adherence and risk of psychoactive drug initiation*

280 A one-point increase in cumulative MedDiet adherence was linearly associated with a 28%  
281 less risk of initiating antidepressant use (HR 0.72, 95% CI 0.67 to 0.78, **Figure 2A**), a 25%  
282 reduced risk of initiating anxiolytic medication (HR 0.75, 95% CI 0.70 to 0.81, **Figure 2B**), a  
283 23% less risk of initiating antipsychotic use (HR 0.77, 95% 0.65 to 0.91, **Figure 2C**), and a  
284 23% reduced risk of initiating antiseizure drugs (HR 0.77, 95% 0.69 to 0.85, **Figure 2D**). The  
285 risk of initiating anxiolytics, antipsychotics, and antiseizure drugs was better explained by a  
286 non-linear equation. There was a greater reduction in the risk of starting anxiolytics or  
287 antiseizure for each one-point MedDiet score increase in participants with low adherence

288 scores (5-8 points) —a 55% lower risk for anxiolytics (**Figure 2B**) and a 43% lower risk for  
289 antiseizure drugs (**Figure 2D**). In the case of antipsychotics (**Figure 2C**), the association  
290 between greater MedDiet adherence and a lower risk of initiating such treatment was only  
291 observed among participants with greater adherence (8 points or more).  
292



293  
294 **Figure 2.** Hazards ratios and confidence intervals of the association between long-term  
295 adherence to a MedDiet and the risk of initiating the use of antidepressants (A), anxiolytics (B),  
296 antipsychotics (C) and antiseizure medication (D). Cox proportional hazards regression  
297 models with smoothed cubic splines were stratified by sex, recruitment site, and educational  
298 level, and adjusted for: age, smoking habit, body mass index, alcohol consumption, energy



299 intake, leisure-time physical activity, and PREDIMED intervention group. Robust variance  
300 estimators were used to account for intra-cluster correlations.

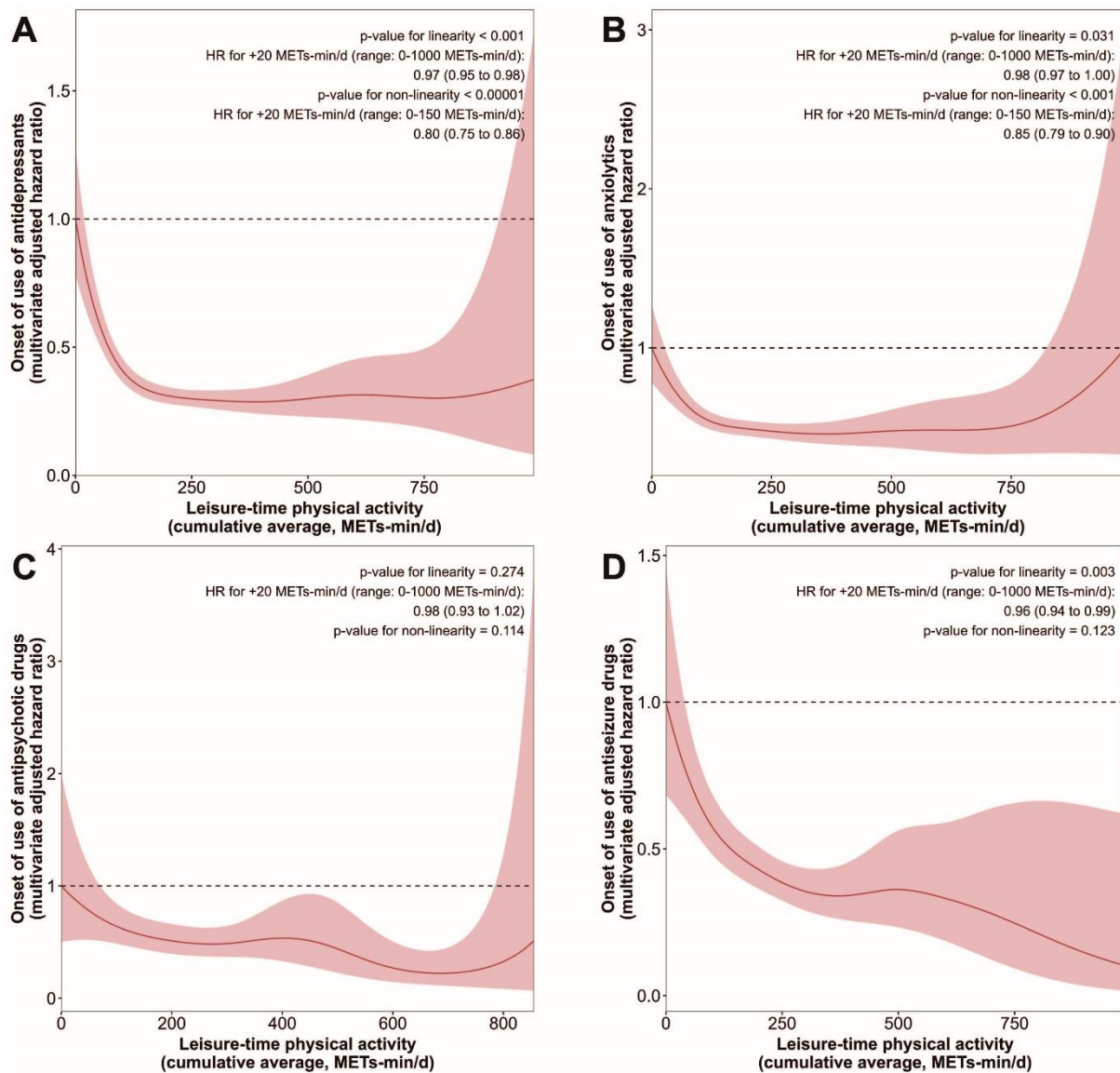
301

302 *LTPA levels and risk of psychoactive drug initiation*

303 A 20 METs-min/day increases in LTPA were linearly associated with a 3% reduced risk of  
304 initiating antidepressant use (HR 0.97, 95% CI 0.95 to 0.98, **Figure 3A**) and a 4% less risk of  
305 initiating antiseizure drugs (HR 0.96, 95% CI 0.94 to 0.99, **Figure 3D**), and nominally linked to  
306 a 2% reduced risk of initiating anxiolytic use (HR 0.98, 95% CI 0.97 to 1.00, **Figure 3B**).  
307 However, the risk of initiating antidepressant and anxiolytic drug use was better explained by  
308 non-linear equations. Among participants with the lowest LTPA values (0-150 METs-min/day),  
309 20 METs-min/day increments in LTPA were associated with a 20% reduced risk of initiating  
310 antidepressant use (**Figure 3A**) and a 15% less risk of initiating anxiolytic medication (**Figure**  
311 **3B**). No clear associations were found for antipsychotic drugs (**Figure 3C**).

312

313



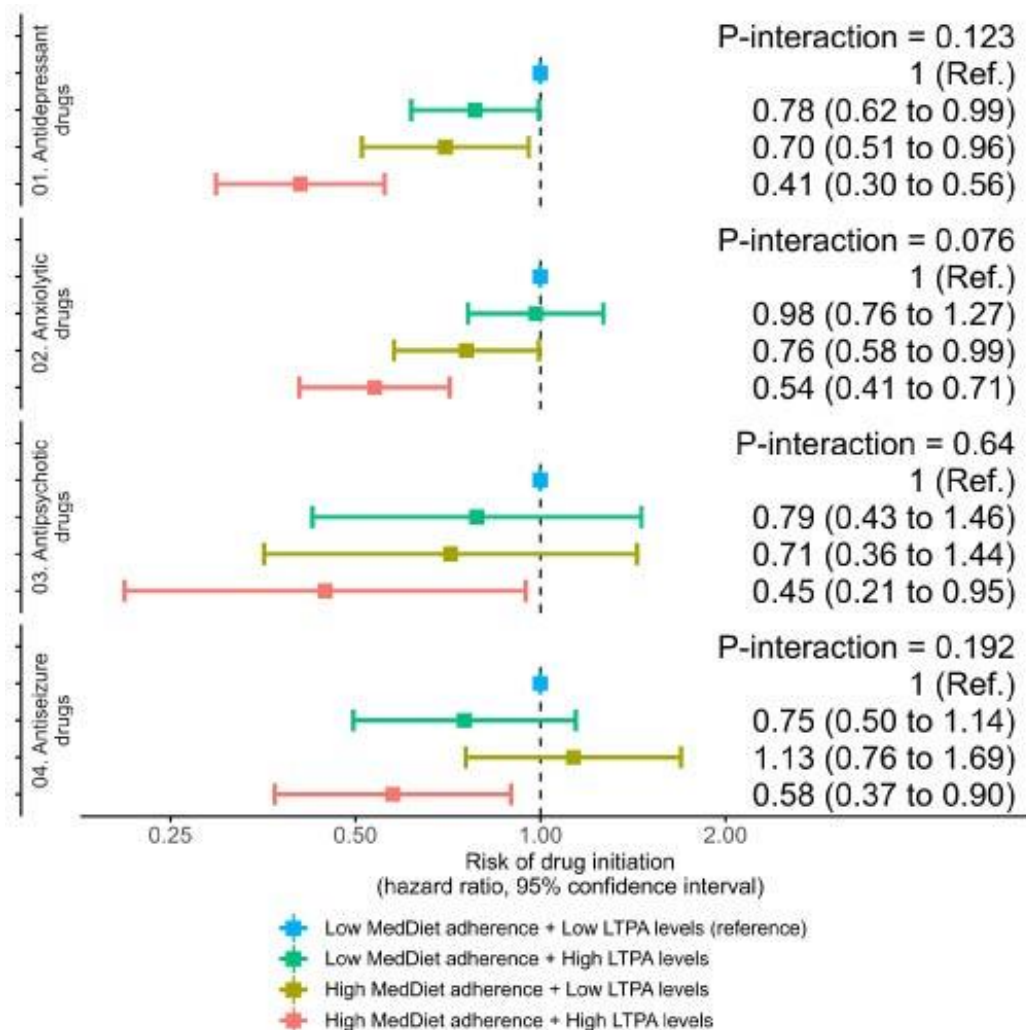
314 **Figure 3.** Association between long-term levels of leisure-time physical activity and the risk of  
315 initiating the use of antidepressants (A), anxiolytics (B), antipsychotics (C) and antiseizure  
316 drugs (D). Cox proportional hazards regression models with smoothed cubic splines were  
317 stratified by sex, recruitment site, and educational level, and adjusted for: age, smoking habit,  
318 body mass index, alcohol consumption, energy intake, adherence to a MedDiet, and  
319 PREDIMED intervention group. Robust variance estimators were used to account for intra-  
320 cluster correlations.

321

322 *Combination of MedDiet adherence and LTPA levels and risk of initiation of psychoactive drug*  
323 *use*

324 High levels of MedDiet adherence ( $\geq 10$  score points) and LTPA ( $\geq 150$  METs-min/day)  
325 combined were associated with lower initiation of psychoactive therapy: 59% less risk of  
326 initiating antidepressant use (HR 0.41, 95% CI 0.30 to 0.56), 46% less risk of initiating  
327 anxiolytics (HR 0.54, 95% CI 0.41 to 0.71), 55% less risk of initiating antipsychotics (HR 0.45,  
328 95% CI 0.21 to 0.95) and 41% less risk of initiating antiseizure therapy (HR 0.58, 95% CI 0.37  
329 to 0.90) (**Figure 4**). The magnitude of the association of high MedDiet and high LTPA  
330 combined was synergistic for anxiolytics ( $p$ -value for interaction = 0.076) and additive for  
331 antidepressants, antipsychotics, and antiseizure medications.

332



333 **Figure 4.** Levels of MedDiet adherence and leisure-time physical activity and risk of initiating  
334 psychoactive drugs.

335 **DISCUSION**

336

337 Among older adults at high cardiovascular risk, we found that adherence to a MedDiet was  
338 associated with a lower risk of initiating the use of antidepressants, anxiolytics, antipsychotics,  
339 and antiseizure drugs. In the case of anxiolytics and antiseizure drugs, the association was  
340 particularly strong among participants with poor sustained adherence to a MedDiet. Our  
341 findings also indicate a strong association between slight increases in LTPA (equivalent to 40  
342 minutes/week of brisk walking or Pilates, or 30 minutes/week of dancing or aerobic classes)  
343 and lower risk of initiating the use of antidepressants, anxiolytics and antiseizure medication.  
344 The magnitudes of the associations were stronger at lower levels of LTPA. Furthermore,  
345 individuals with high levels of both exposures show a particularly strong association with lower  
346 risk of initiation of psychoactive drugs, which was synergistic for anxiolytic medication.

347 Previous studies have highlighted the neuroprotective properties of a traditional  
348 MedDiet on mental health. These benefits could be due to its capacity to reduce oxidative  
349 stress and low-grade inflammation thanks to its array of bioactive compounds, including  
350 antioxidants, polyunsaturated and monounsaturated fatty acids, and prebiotic fiber [18,32,33].  
351 Our results show an association between higher adherence to a MedDiet and a lower incidence  
352 of initiating antidepressant, anxiolytic, antipsychotic, and antiseizure medications in older  
353 adults, with a particularly pronounced association for anxiolytics and antiseizure drugs among  
354 those with very low MedDiet adherence sustained in time. High adherence to a MedDiet has  
355 already been linked to lower incident depression [14]. However, to the best of our knowledge,  
356 our study is the first to reveal that the MedDiet is linked to a reduced incidence of clinical  
357 outcomes related to anxiety, psychosis, and epilepsy. Prior research in this area includes only  
358 two cross-sectional studies that inversely correlated the MedDiet with anxiety symptoms in  
359 elderly individuals [34,35] and one cross-sectional study that examined the relationship  
360 between diet quality and schizophrenia [36], and no studies that have investigated the  
361 relationship of MedDiet with any clinical manifestation of epilepsy in adults.

362 Our results have also shown a link between increases in LTPA and a reduced incidence  
363 of initiating antidepressant and anxiolytic medications among participants with very low LTPA  
364 levels, as well as a relationship with lower initiation of antiseizure medication. Our findings are  
365 consistent with previous evidence, as exercise interventions have been shown to effectively  
366 treat symptoms of depression [37], anxiety [38], and epilepsy [39]. Our results also suggested  
367 a trend towards a lower incidence of initiating antipsychotic medication. Although this trend  
368 was not entirely significant, likely due to the low incidence rate in our population (1.1%), it  
369 aligns with previous evidence indicating that physical activity is beneficial for improving  
370 symptoms of psychotic disorders [40]. However, it should be noted that our results extend  
371 beyond previous evidence by showing that modest increases in physical activity—equivalent  
372 to a weekly session of 30-50 minutes of mild to moderate intensity exercise—are linked to a  
373 lower risk of starting antidepressant or anxiolytic medication, especially in those significantly  
374 below the recommended LTPA levels.

375 Our findings also suggest a synergistic association between a high adherence to  
376 MedDiet diet combined with high levels of LTPA and the initiation of anxiolytic drugs, as well  
377 as an additive relationship with the initiation of antidepressants, antipsychotics, and  
378 antiepileptic drugs. A healthy diet combined with physical activity has been traditionally linked  
379 to decreased mortality and lower incidence of chronic cardiometabolic disease [41,42], and  
380 their combination has been associated with reduced initiation of use of cardiovascular drugs  
381 in older adults [26]. Additionally, this combination has been linked to enhanced mental  
382 wellbeing [43], particularly in terms of depression [44] and improved symptoms of psychosis  
383 [45]. However, to the best of our knowledge, this is the first study to report similar findings in  
384 relation to mental health medications and a potentially synergistic benefit regarding anxiety.

385 We acknowledge some limitations in our study. Firstly, our analyses were based on  
386 data from the PREDIMED trial, which primarily focused on dietary intervention and did not  
387 include specific advice on LTPA. As a result, we treated the data as a cohort study, adjusting  
388 all our analyses for the intervention group. Nevertheless, the use of cumulative averages of  
389 MedDiet adherence and LTPA levels as exposure variables, instead of a single baseline

390 measurement, is a strength of the study. Secondly, due to the available data, we could only  
391 collect categorical information regarding drug use, preventing us from studying dose changes  
392 or other aspects of medication use. Thirdly, the initiation of psychoactive-related therapy was  
393 not a predetermined endpoint in the PREDIMED study. Therefore, there was no  
394 standardization of treatment and patients were managed according to the clinical practice of  
395 the attending physicians and participating hospitals. Fourthly, main exposures and certain  
396 covariates, such as alcohol and energy intake, relied on self-reported data, which introduces  
397 the possibility of misclassification and potential bias. Lastly, our conclusions are applicable  
398 specifically to older adults at high cardiovascular risk and may not be generalizable to other  
399 populations.

400 **CONCLUSIONS**

401

402 In a cohort of older adults at high cardiovascular risk, our results showed that both higher  
403 adherence to a MedDiet and LTPA levels were associated with a lower incidence of initiating  
404 common psychoactive medication, individually and combined. These findings underscore the  
405 potential of a healthy diet and regular physical activity to improve mental health and  
406 neurological outcomes among older individuals. Our work sets the stage for future randomized  
407 controlled trials to assess the effectiveness of MedDiet and physical activity interventions in  
408 preventing the onset of depression, anxiety, psychotic disorders, and seizures, particularly  
409 given the prevalence and disabling nature of these conditions in older adults, along with their  
410 associated economic burden on health systems.



411 **ETHICS APPROVAL AND CONSENT TO PARTICIPATE**

412 The study protocol of the PREDIMED study complied with the Declaration of Helsinki for  
413 Medical Research involving Human Subjects. It received approval from institutional ethic  
414 committees at all recruitment sites. The protocol of this sub-study received approval from the  
415 Hospital del Mar Ethics Committee (Barcelona, Spain). The PREDIMED study protocol was  
416 registered with the International Standard Randomized Controlled Trial Number  
417 ISRCTN35739639 (<http://www.isrctn.com/ISRCTN35739639>) and is available in the  
418 PREDIMED study website (<http://www.predimed.es>). All participants provided written informed  
419 consent before joining the study.

420

421 **CONSENT FOR PUBLICATION**

422 Not applicable.

423

424 **AVAILABILITY OF DATA AND MATERIALS**

425 The dataset analyzed during the current study cannot be made publicly available due to  
426 national data regulations and ethical considerations, including the absence of explicit written  
427 consent from study participants to make their deidentified data available upon study  
428 completion. However, data described in the manuscript will be provided to bona fide  
429 investigators for collaboration upon request and approval. Requests can be made by sending  
430 a letter to the PREDIMED Steering Committee ([predimed-steering-](mailto:predimed-steering-committee@googlegroups.com)  
431 [committee@googlegroups.com](mailto:committee@googlegroups.com)).

432

433 **COMPETING INTERESTS**

434 R.E. reports being a board member of the Research Foundation on Wine and Nutrition, the  
435 Beer and Health Foundation, and the European Foundation for Alcohol Research; personal  
436 fees from KAO Corporation; lecture fees from Instituto Cervantes, Fundación Dieta  
437 Mediterranea, Cerveceros de España, Lilly Laboratories, AstraZeneca, and Sanofi; and grants  
438 from Novartis, Amgen, Bicerntury, and Grand Fontaine. E.R. reports personal fees, grants,

439 and nonfinancial support from the California Walnut Commission and Alexion; and nonfinancial  
440 support from the International Nut Council. J.S.-S. reports being a board member and personal  
441 fees from Instituto Danone Spain; being a board member and grants from the International Nut  
442 and Dried Fruit Foundation. The rest of the authors have nothing to disclose.

443

#### 444 **FUNDING**

445 This work was supported by the Blanquerna School of Health Sciences (University Ramon  
446 Llull, Barcelona, Spain) and the Instituto de Salud Carlos III [grant number CD17/00122]. The  
447 funders had no role in the study design; the collection, analysis, and interpretation of data; in  
448 the writing of the report; or in the decision to submit the article for publication. The views and  
449 opinions expressed in this paper are those of the authors only and do not necessarily reflect  
450 those of the funders.

451

#### 452 **AUTHORS' CONTRIBUTIONS**

453 M.H.H. was responsible for formal analyses, data interpretation, visualization, and drafting the  
454 article. E.F. contributed to data interpretation and revised the article critically. C.L. contributed  
455 to data interpretation and revised the article critically. O.C. contributed to data interpretation  
456 and revised the article critically. R.E. contributed to funding and resource acquisition,  
457 investigation, project administration, data interpretation, and revised the article critically. E.R.  
458 contributed to funding and resource acquisition, investigation, project administration, data  
459 interpretation, and revised the article critically. M.Á.M.-G. contributed to funding and resource  
460 acquisition, investigation, project administration, data interpretation, and revised the article  
461 critically. D.C. contributed to funding and resource acquisition, investigation, project  
462 administration, data interpretation, and revised the article critically. N.B. contributed to data  
463 interpretation and revised the article critically. J.L. contributed to data interpretation and revised  
464 the article critically. E.G.-G. contributed to data interpretation and revised the article critically.  
465 F.A. contributed to data interpretation and revised the article critically. M.Fiol contributed to  
466 data interpretation and revised the article critically. L.S.-M. contributed to data interpretation

467 and revised the article critically. A.R.M contributed to data interpretation and revised the article  
468 critically. A.G. contributed to data interpretation and revised the article critically. C.O.-A.  
469 contributed to data interpretation and revised the article critically. A.D.-L. contributed to data  
470 interpretation and revised the article critically. M.Fitó contributed to funding and resource  
471 acquisition, investigation, project administration, data interpretation, and revised the article  
472 critically. A.H. coordinated the project, conceived and designed the study, contributed to  
473 funding acquisition, was responsible for data curation, contributed to data interpretation, and  
474 critically revised the article. M.H.H. and A.H. are the guarantors of this study, accept full  
475 responsibility for the work and the conduct of the study, have access to the data, and controlled  
476 the decision to publish. All authors read and approved the final manuscript.

477

#### 478 **ACKNOWLEDGEMENTS**

479 We are extremely grateful to the PREDIMED Study participants for their collaboration. A full  
480 list of the names of all the PREDIMED Study collaborators is available in the **Appendix**. CIBER  
481 de Fisiopatología de la Obesidad y Nutrición (CIBEROBN), CIBER de Epidemiología y Salud  
482 Pública (CIBERESP) and CIBER de Enfermedades Cardiovasculares (CIBERCV) are  
483 initiatives of Instituto de Salud Carlos III (Madrid, Spain), and are financed by the European  
484 Regional Development Fund.

485 **REFERENCES**

486

487 1. GBD 2019 Mental Disorders Collaborators. Global, regional, and national burden of 12  
488 mental disorders in 204 countries and territories, 1990-2019: a systematic analysis for the  
489 Global Burden of Disease Study 2019. *Lancet Psychiatry*. 2022;9:137–50.

490 2. Rehm J, Shield KD. Global Burden of Disease and the Impact of Mental and Addictive  
491 Disorders. *Curr Psychiatry Rep*. 2019;21:10.

492 3. Charlson FJ, Baxter AJ, Dua T, Degenhardt L, Whiteford HA, Vos T. Excess mortality from  
493 mental, neurological and substance use disorders in the Global Burden of Disease Study 2010.  
494 *Epidemiol Psychiatr Sci*. 2015;24:121–40.

495 4. Patel V, Saxena S, Lund C, Thornicroft G, Baingana F, Bolton P, et al. The Lancet  
496 Commission on global mental health and sustainable development. *The Lancet*.  
497 2018;392:1553–98.

498 5. Maestre-Miquel C, López-de-Andrés A, Ji Z, de Miguel-Diez J, Brocate A, Sanz-Rojo S, et  
499 al. Gender Differences in the Prevalence of Mental Health, Psychological Distress and  
500 Psychotropic Medication Consumption in Spain: A Nationwide Population-Based Study. *Int J*  
501 *Environ Res Public Health*. 2021;18:6350.

502 6. Carrasco-Garrido P, López de Andrés A, Hernández Barrera V, Jiménez-Trujillo I, Jiménez-  
503 García R. National trends (2003-2009) and factors related to psychotropic medication use in  
504 community-dwelling elderly population. *Int Psychogeriatr*. 2013;25:328–38.

505 7. Van Zoonen K, Buntrock C, Ebert DD, Smit F, Reynolds CF, Beekman AT, et al. Preventing  
506 the onset of major depressive disorder: A meta-analytic review of psychological interventions.  
507 *Int J Epidemiol*. 2014;43:318–29.

- 508 8. Carbon M, Correll CU. Clinical predictors of therapeutic response to antipsychotics in  
509 schizophrenia. *Dialogues Clin Neurosci*. 2014;16:505–24.
- 510 9. Yu Z, Jiang H, Shao L, Zhou Y, Shi H, Ruan B. Use of antipsychotics and risk of myocardial  
511 infarction: a systematic review and meta-analysis. *Br J Clin Pharmacol*. 2016;82:624–32.
- 512 10. Loggia G, Attoh-Mensah E, Pothier K, Morello R, Lescure P, Bocca M-L, et al. Psychotropic  
513 Polypharmacy in Adults 55 Years or Older: A Risk for Impaired Global Cognition, Executive  
514 Function, and Mobility. *Front Pharmacol*. 2020;10:1659.
- 515 11. Bastos AA, Nogueira LR, Neto JV, Fisberg RM, Yannakoulia M, Ribeiro SML. Association  
516 between the adherence to the Mediterranean dietary pattern and common mental disorders  
517 among community-dwelling elders: 2015 Health Survey of São Paulo, SP, Brazil. *J Affect*  
518 *Disord*. 2020;265:389–94.
- 519 12. Mortazavi SS, Mohammad K, Ardebili HE, Beni RD, Mahmoodi M, Keshteli AH. Mental  
520 disorder prevention and physical activity in Iranian elderly. *Int J Prev Med*. 2012;3:S64-72.
- 521 13. Firth J, Solmi M, Wootton RE, Vancampfort D, Schuch FB, Hoare E, et al. A meta-review  
522 of “lifestyle psychiatry”: the role of exercise, smoking, diet and sleep in the prevention and  
523 treatment of mental disorders. *World Psychiatry Off J World Psychiatr Assoc WPA*.  
524 2020;19:360–80.
- 525 14. Lassale C, Batty GD, Baghdadli A, Jacka F, Sánchez-Villegas A, Kivimäki M, et al. Healthy  
526 dietary indices and risk of depressive outcomes: a systematic review and meta-analysis of  
527 observational studies. *Mol Psychiatry*. 2019;24:965–86.
- 528 15. Dinu M, Pagliai G, Casini A, Sofi F. Mediterranean diet and multiple health outcomes: an  
529 umbrella review of meta-analyses of observational studies and randomised trials. *Eur J Clin*  
530 *Nutr*. 2018;72:30–43.

- 531 16. Pattyn N, Cornelissen VA, Eshghi SRT, Vanhees L. The Effect of Exercise on the  
532 Cardiovascular Risk Factors Constituting the Metabolic Syndrome: A Meta-Analysis of  
533 Controlled Trials. *Sports Med.* 2013;43:121–33.
- 534 17. Clark JS, Simpson BS, Murphy KJ. The role of a Mediterranean diet and physical activity  
535 in decreasing age-related inflammation through modulation of the gut microbiota composition.  
536 *Br J Nutr.* 2022;128:1299–314.
- 537 18. Marx W, Moseley G, Berk M, Jacka F. Nutritional psychiatry: the present state of the  
538 evidence. *Proc Nutr Soc.* 2017;76:427–36.
- 539 19. Bauer ME, Teixeira AL. Inflammation in psychiatric disorders: what comes first? *Ann N Y*  
540 *Acad Sci.* 2019;1437:57–67.
- 541 20. Beurel E, Toups M, Nemeroff CB. The Bidirectional Relationship of Depression and  
542 Inflammation: Double Trouble. *Neuron.* 2020;107:234–56.
- 543 21. Dantzer R, O'Connor JC, Freund GG, Johnson RW, Kelley KW. From inflammation to  
544 sickness and depression: when the immune system subjugates the brain. *Nat Rev Neurosci.*  
545 2008;9:46–56.
- 546 22. Estruch R, Ros E, Salas-Salvadó J, Covas M-I, Corella D, Arós F, et al. Primary Prevention  
547 of Cardiovascular Disease with a Mediterranean Diet Supplemented with Extra-Virgin Olive Oil  
548 or Nuts. *N Engl J Med.* 2018;378:e34.
- 549 23. Schröder H, Fitó M, Estruch R, Martínez-González MA, Corella D, Salas-Salvadó J, et al.  
550 A Short Screener Is Valid for Assessing Mediterranean Diet Adherence among Older Spanish  
551 Men and Women. *J Nutr.* 2011;141:1140–5.
- 552 24. Elosua R, Marrugat J, Molina L, Pons S, Pujol E. Validation of the Minnesota Leisure Time  
553 Physical Activity Questionnaire in Spanish Men. *Am J Epidemiol.* 1994;139:1197–209.

- 554 25. Elosua R, Garcia M, Aguilar A, Molina L, Covas M-I, Marrugat J. Validation of the  
555 Minnesota Leisure Time Physical Activity Questionnaire in Spanish Women: *Med Sci Sports*  
556 *Exerc.* 2000;32:1431–7.
- 557 26. Ribó-Coll M, Castro-Barquero S, Lassale C, Sacanella E, Ros E, Toledo E, et al.  
558 Mediterranean Diet and Physical Activity Decrease the Initiation of Cardiovascular Drug Use  
559 in High Cardiovascular Risk Individuals: A Cohort Study. *Antioxidants.* 2021;10:397.
- 560 27. Martinez-Gonzalez MA, Corella D, Salas-Salvado J, Ros E, Covas MI, Fiol M, et al. Cohort  
561 Profile: Design and methods of the PREDIMED study. *Int J Epidemiol.* 2012;41:377–85.
- 562 28. Castro-Barquero S, Ribó-Coll M, Lassale C, Tresserra-Rimbau A, Castañer O, Pintó X, et  
563 al. Mediterranean Diet Decreases the Initiation of Use of Vitamin K Epoxide Reductase  
564 Inhibitors and Their Associated Cardiovascular Risk: A Randomized Controlled Trial. *Nutrients.*  
565 2020;12:3895.
- 566 29. Ribó-Coll M, Lassale C, Sacanella E, Ros E, Toledo E, Sorlí JV, et al. Mediterranean diet  
567 and antihypertensive drug use: a randomized controlled trial. *J Hypertens.* 2021;39:1230–7.
- 568 30. Schmidt CO, Ittermann T, Schulz A, Grabe HJ, Baumeister SE. Linear, nonlinear or  
569 categorical: how to treat complex associations? Splines and nonparametric approaches. *Int J*  
570 *Public Health.* 2013;58:161–5.
- 571 31. Martínez-González MA, Montero P, Ruiz-Canela M, Toledo E, Estruch R, Gómez-Gracia  
572 E, et al. Yearly attained adherence to Mediterranean diet and incidence of diabetes in a large  
573 randomized trial. *Cardiovasc Diabetol.* 2023;22:262.
- 574 32. Gómez-Pinilla F. Brain foods: the effects of nutrients on brain function. *Nat Rev Neurosci.*  
575 2008;9:568–78.
- 576 33. Bloch MH, Hannestad J. Omega-3 fatty acids for the treatment of depression: systematic  
577 review and meta-analysis. *Mol Psychiatry.* 2012;17:1272–82.



- 578 34. Tryfonos C, Pavlidou E, Vorvolakos T, Alexatou O, Vadikolias K, Mentzelou M, et al.  
579 Association of Higher Mediterranean Diet Adherence With Lower Prevalence of Disability and  
580 Symptom Severity, Depression, Anxiety, Stress, Sleep Quality, Cognitive Impairment, and  
581 Physical Inactivity in Older Adults With Multiple Sclerosis. *J Geriatr Psychiatry Neurol.*  
582 2024;37:318–31.
- 583 35. Allcock L, Mantzioris E, Villani A. Adherence to a Mediterranean Diet Is Inversely  
584 Associated with Anxiety and Stress but Not Depression: A Cross-Sectional Analysis of  
585 Community-Dwelling Older Australians. *Nutrients.* 2024;16:366.
- 586 36. Costa R, Teasdale S, Abreu S, Bastos T, Probst M, Rosenbaum S, et al. Dietary Intake,  
587 Adherence to Mediterranean Diet and Lifestyle-Related Factors in People with Schizophrenia.  
588 *Issues Ment Health Nurs.* 2019;40:851–60.
- 589 37. Noetel M, Sanders T, Gallardo-Gómez D, Taylor P, Del Pozo Cruz B, van den Hoek D, et  
590 al. Effect of exercise for depression: systematic review and network meta-analysis of  
591 randomised controlled trials. *BMJ.* 2024;384:e075847.
- 592 38. Gordon BR, McDowell CP, Lyons M, Herring MP. The Effects of Resistance Exercise  
593 Training on Anxiety: A Meta-Analysis and Meta-Regression Analysis of Randomized  
594 Controlled Trials. *Sports Med Auckl NZ.* 2017;47:2521–32.
- 595 39. Duñabeitia I, Bidaurrazaga-Letona I, Diz JC, Colon-Leira S, García-Fresneda A, Ayán C.  
596 Effects of physical exercise in people with epilepsy: A systematic review and meta-analysis.  
597 *Epilepsy Behav EB.* 2022;137:108959.
- 598 40. Reißmayer M, Kambeitz J, Javelle F, Lichtenstein TK. Systematic Review and Meta-analysis  
599 of Exercise Interventions for Psychotic Disorders: The Impact of Exercise Intensity,  
600 Mindfulness Components, and Other Moderators on Symptoms, Functioning, and  
601 Cardiometabolic Health. *Schizophr Bull.* 2024;50:615–30.

- 602 41. Hershey MS, Martínez-González MÁ, Álvarez-Álvarez I, Martínez Hernández JA, Ruiz-  
603 Canela M. The Mediterranean diet and physical activity: better together than apart for the  
604 prevention of premature mortality. *Br J Nutr.* 2022;128:1413–24.
- 605 42. Vuori I. Health benefits of physical activity with special reference to interaction with diet.  
606 *Public Health Nutr.* 2001;4:517–28.
- 607 43. Fox KR. The influence of physical activity on mental well-being. *Public Health Nutr.*  
608 1999;2:411–8.
- 609 44. Jacka FN, Berk M. Depression, diet and exercise. *Med J Aust [Internet].* 2013 [cited 2024  
610 Oct 4];199. Available from: <https://onlinelibrary.wiley.com/doi/abs/10.5694/mja12.10508>
- 611 45. Fernández-Abascal B, Suárez-Pinilla P, Cobo-Corrales C, Crespo-Facorro B, Suárez-  
612 Pinilla M. In- and outpatient lifestyle interventions on diet and exercise and their effect on  
613 physical and psychological health: a systematic review and meta-analysis of randomised  
614 controlled trials in patients with schizophrenia spectrum disorders and first episode of  
615 psychosis. *Neurosci Biobehav Rev.* 2021;125:535–68.

616

617 **SUPPLEMENTAL MATERIALS**

618

619 *Detailed list of antidepressants, anxiolytics, antipsychotics, and antiseizure drugs assessed in*  
620 *the study*

621 Antidepressants: agomelatine (Anatomical Therapeutic Chemical code: N06AX22),  
622 amitriptyline (N06AA09), bupropion (N06AX12), citalopram (N06AB04), clomipramine  
623 (N06AA04), desipramine (N06AA01), desvenlafaxine (N06AX23), doxepin (N06AA12),  
624 dosulepin (N06AA16), duloxetine (N06AX21), escitalopram (N06AB10), fluoxetine (N06AB03),  
625 imipramin (N06AA02), maprotiline (N06AA21), mianserin (N06AX03), mirtazapine (N06AX11),  
626 moclobemide (N06AG02), nortriptyline (N06AA10), oxitriptan (N06AX01), paroxetine  
627 (N06AB05), reboxetine (N06AX18), sertraline (N06AB06), trazodone (N06AX05), and  
628 venlafaxine (N06AX16).

629 Anxiolytics: alprazolam (N05BA12), bentazepam (N05BA24), bromazepam (N05BA08),  
630 brotizolam (N05CD09), buspirone (N05BE01), clobazam (N05BA09), clonazepam (N03AE01),  
631 clordiazepoxide (N05BA02), clorazepate (N05BA05), diazepam (N05BA01), flunitrazepam  
632 (N05CD03), flurazepam (N05CD01), halazepam (N05BA13), ketazolam (N05BA10),  
633 lorazepam (N05BA06), lormetazepam (N05CD06), loprazolam (N05CD11), medazepam  
634 (N05BA03), midazolam (N05CD08), pinazepam (N05BA14), tepazepam (N05BA01), triazolam  
635 (N05CD05), zaleplon (N05CF03), zolpidem (N05CF02), and zopiclone (N05CF01).

636 Antipsychotics: amisulpride (N05AL05), chlorpromazine (N05AA01), clotiapine (N05AH06),  
637 flupentixol (N05AF01), fluphenazine (N05AB02), haloperidol (N05AD01), levomepromazine  
638 (N05AA02), olanzapine (N05AH03), perphenazine (N05AB03), pimozide (N05AG02),  
639 quetiapine (N05AH04), risperidone (N05AX08), sulpiride (N05AL01), thioridazine (N05AC02),  
640 tiapride (N05AL03), and ziprasidone (N05AE04).

641 Antiseizure drugs: carbamazepine (N03AF01), clonazepam (N03AE01), gabapentin  
642 (N02BF01), lamotrigine (N03AX09), levetiracetam (N03AX14), oxcarbazepine (N03AF02),  
643 phenobarbital (N03AA02), phenytoin (N03AB02), pregabalin (N02BF02), primidone

644 (N03AA03), tiagabine (N03AG06), topiramate (N03AX11), valproic acid (N03AG01),  
645 valpromide (N03AG02), and zonisamide (N03AX15).

646 **APPENDIX**

647

648 **Full list of PREDIMED study collaborators**

649 Hospital Clinic, Institut d'Investigacions Biomèdiques August Pi i Sunyer, Barcelona, Spain: R.  
650 Estruch, M. Serra, A. Pérez-Heras, C. Viñas, R. Casas, L. de Santamaría, S. Romero, E.  
651 Sacanella, G. Chiva, P. Valderas, S. Arranz, J.M. Baena, M. García, M. Oller, J. Amat, I.  
652 Duaso, Y. García, C. Iglesias, C. Simón, L. Quinzavos, L. Parra, M. Liroz, J. Benavent, J. Clos,  
653 I. Pla, M. Amorós, M.T. Bonet, M.T. Martín, M.S. Sánchez, J. Altirriba, E. Manzano, A. Altés,  
654 M. Cofán, C. Valls-Pedret, A. Sala-Vila, M. Doménech, R. Gilabert, and N. Bargalló.  
655 University of Navarra, Primary Care Centres, Pamplona, Spain: M.Á. Martínez-González, A.  
656 Sánchez-Tainta, B. Sanjulián, E. Toledo, M. Bes-Rastrollo, A. Martí, C. Razquin, P. Buil-  
657 Cosiales, M. Serrano-Martínez, J. Díez-Espino, A. García-Arellano, I. Zazpe, F.J. Basterra-  
658 Gortari, E.H. Martínez-Lapiscina, A. Gea, M. Garcia-Lopez, J.M. Nuñez-Córdoba, N. Ortuño,  
659 N. Berrade, V. Extremera-Urabayen, C. Arroyo-Azpa, L. García-Pérez, J. Villanueva-Tellería,  
660 F. Cortés-Ugalde, T. Sagredo-Arce, M<sup>a</sup> D. García de la Noceda-Montoy, M<sup>a</sup> D. Vigata-López,  
661 M<sup>a</sup> T. Arceiz-Campo, A. Urtasun-Samper, M<sup>a</sup> V. Gueto-Rubio, and B. Churio-Beraza.  
662 University of Valencia, Valencia, Spain; Universitat Jaume I, Castellon, Spain; and Conselleria  
663 de Sanitat, Generalitat Valenciana: D. Corella, P. Carrasco, C. Ortega-Azorín, E.M. Asensio,  
664 R. Osma, R. Barragán, F. Francés, M. Guillén, J.I. González, C. Sáiz, O. Portolés, F.J.  
665 Giménez, O. Coltell (U. Jaume I), R. Fernández-Carrión, I. González-Monje, L. Quiles, V.  
666 Pascual, C. Riera, M.A. Pages, D. Godoy, A. Carratalá-Calvo, S. Sánchez-Navarro, and C.  
667 Valero-Barceló.  
668 University Rovira i Virgili, Reus, Spain: J. Salas-Salvadó, M. Bulló, R. González, C. Molina, F.  
669 Márquez, N. Babio, M. Sorlí, J. García-Roselló, F. Martín, R. Tort, A. Isach, B. Costa, J.J.  
670 Cabré, J. Fernández-Ballart, N. Ibarrola, C. Alegret, P. Martínez, S. Millán, J.L. Piñol, J.  
671 Basora, and J.M. Hernández.

672 Institut Hospital del Mar d'Investigacions Mèdiques, Barcelona, Spain: M. Fitó, M.I. Covas, O.  
673 Castañer, S. Tello, J. Vila, H. Schröder, R. De la Torre, D. Muñoz-Aguayo, N. Molina, E.  
674 Maestre, A. Rovira, R. Elosua, and M. Farré.  
675 University Hospital of Alava, Vitoria, Spain: F. Arós, I. Salaverría, T. del Hierro, J. Algorta, S.  
676 Francisco, A. Alonso-Gómez, J. San-Vicente, E. Sanz, I. Felipe, A. Alonso-Gómez, and A.  
677 Loma-Osorio.  
678 University of Málaga, Málaga, Spain: E. Gómez-Gracia, R. Benítez-Pont, M. Bianchi-Alba, J.  
679 Fernández-Crehuet Navajas, J. Wärnberg, R. Gómez-Huelgas, J. Martínez-González, V.  
680 Velasco-García, J. de Diego-Salas, A. Baca-Osorio, J. Gil-Zarzosa, J.J. Sánchez-Luque, and  
681 E. Vargas-López.  
682 Institute of Health Sciences, University of Balearic Islands, and Hospital Son Espases, Palma  
683 de Mallorca, Spain: M. Fiol, M. García-Valdúez, M. Moñino, A. Proenza, R. Prieto, G.  
684 Frontera, M. Ginard, F. Fiol, A. Jover, and J. García.  
685 Department of Family Medicine, Primary Care Division of Sevilla, Sevilla, Spain: J. Lapetra, M.  
686 Leal, E. Martínez, J.M. Santos, M. Ortega-Calvo, P. Román, F.J. García, P. Iglesias, Y.  
687 Corchado, E. Mayoral, and C. Lama.  
688 University of Las Palmas de Gran Canaria, Las Palmas, Spain: L. Serra-Majem, J. Álvarez-  
689 Pérez, E. Díez-Benítez, I. Bautista-Castaño, I. Maldonado-Díaz, A. Sánchez-Villegas, F.  
690 Sarmiendo-de la Fe, C. Simón-García, I. Falcón-Sanabria, B. Macías-Gutiérrez, and A.J.  
691 Santana-Santana.  
692 Hospital Universitario de Bellvitge, Hospitalet de Llobregat, Barcelona, Spain: X. Pintó, E. de  
693 la Cruz, A. Galera, Y. Soler, F. Trias, I. Sarasa, E. Padres, R. Figueras, X. Solanich, R. Pujol  
694 and E. Corbella.  
695 Clinical End Point Committee: F. Arós (chair), M. Aldamiz, A. Alonso-Gómez, J. Berjón, L.  
696 Forga, J. Gállego, M. A. García-Layana, A. Larrauri, J. Portu, J. Timiraus, and M. Serrano-  
697 Martínez.