

1 **Impacts of vaccination on the variant selection of SARS-CoV-2 and the subsequent case**
2 **hospitalization rate: insights from the first U.S. Omicron wave**

3 Jingbo Liang^a, Zhaojun Ding^a, Qingpeng Zhang^{c,d}, Hsiang-Yu Yuan^{a,b,*}

4 ^aDepartment of Biomedical Sciences, Jockey Club College of Veterinary Medicine and Life
5 Sciences, City University of Hong Kong, Hong Kong SAR, China

6 ^bCentre for Applied One Health Research and Policy Advice, Jockey Club College of
7 Veterinary Medicine and Life Sciences, City University of Hong Kong, Hong Kong SAR,
8 China

9 ^cMusketeers Foundation Institute of Data Science, The University of Hong Kong, Hong
10 Kong, China

11 ^dDepartment of Pharmacology and Pharmacy, LKS Faculty of Medicine, The University of
12 Hong Kong, Hong Kong, China

13

14 *Corresponding author. Email: sean.yuan@cityu.edu.hk

15 **Abstract**

16 **Background**

17 COVID-19 vaccines, while providing protection against hospitalization, could inadvertently
18 increase selection pressure on new immune-escape variants, impacting case hospitalization
19 rate (CHR).

20

21 **Methods**

22 Using epidemiological and genomic sequence data, we calculated daily state-level CHR and
23 the proportion of Omicron mutations in the United States during the first Omicron wave
24 (between December 11, 2021, and March 22, 2022). We derived mathematical formulas to
25 link evolution responses to an increasing population immunity with lagged regression models.
26 Using mediation analysis, together with generalized linear mixed models and distributed lag
27 nonlinear models, we assessed how natural selection, shaped by vaccine coverage, impacts
28 CHR.

29

30 **Results**

31 The model showed that increasing vaccination coverage from 45% to 70% contributed to a
32 reduction in CHR from 5.8% to 4.4%. Part of the reduction resulted from direct vaccine
33 protection (OR: 0.85, p-value=0.012). However, the higher vaccination coverage was
34 correlated with a 20% increase in the proportion of BA.1/BA.1.1-associated mutations. As
35 the Omicron variants were less severe than their predecessors (Delta), CHR further reduced
36 (OR: 0.87, p-value<0.001). Marginally, this could reduce CHR from 5.8% to 5.1% via the
37 adaptation of Omicron variants as marginal effect without accounting for direct vaccine
38 protection.

39

40 **Conclusions**

41 The study offers new insight into vaccine strategies for reducing hospitalization risk by
42 shortening [or maintaining] the circulation of more [or less] virulent variants among
43 infectious diseases. Continuous monitoring of variant evolution, including their virulence, is
44 critical.

45

46 Keywords: COVID-19 vaccine; case hospitalization rate; viral evolution

47 **Introduction**

48 Even though the global health emergency for the COVID-19 pandemic was declared over in
49 May 2023 ¹, concerns remain about the SARS-CoV-2's ability to mutate and evade
50 neutralizing antibodies ²⁻⁴. This emphasizes the critical need for continuous surveillance and
51 forecasting of COVID-19 hospital admission rates to assess the demand on healthcare system
52 against emerging variants of concern (VOC) ⁵, which have frequently emerged and swiftly
53 become predominant since vaccine rollout. Besides vaccine effectiveness against severe
54 illness or hospitalization ⁶⁻⁸, it is important to understand the impacts of vaccination on the
55 adaptation of new immune-escape variants ⁹, which also influence the disease
56 severity. Although in theory, selection pressures contribute to the fixation of beneficial
57 mutations ^{10,11}, evidence from observational studies using SARS-CoV-2 real-world data is
58 lacking.

59

60 After the rollout of vaccines and the emergence of the Omicron variant, a significant decrease
61 in case hospitalization rate (CHR) has been observed in many countries ^{12,13}. The CHR,
62 defined as the proportion of daily new hospital admissions relative to daily new reported
63 cases, can be used as a metric to assess disease severity. This metric has been used to infer
64 the number of hospitalizations in recent modelling studies to predict healthcare demand ¹⁴.
65 The observed reduction in CHR resulted from both vaccination and the replacement of the
66 Delta strain with the less virulent (in terms of disease severity) ¹⁵. However, disentangling
67 their effects is not straightforward, because of the complex interactions among vaccination,
68 viral transmission, and viral adaptation ¹¹.

69

70 In the United States (US), the first wave of Omicron (including BA1, BA1.1 and BA.2)
71 caused over 27 million COVID-19 cases and about one million hospitalizations ¹⁶. Since the

72 commencement of vaccination campaigns in December 2020, a distinct variation in
73 vaccination coverage among states has been observed¹⁶. However, the effects of these
74 differences on CHR via the selection of the Omicron's variants was largely unexplored.

75

76 Our study aimed to quantify the impact of vaccination on CHR through both the effectiveness
77 against hospitalization and the selection of certain key mutations of variants and subvariants
78 using causal mediation analysis. This helps to understand the relationship between
79 vaccination, viral adaptation, and hospitalization. The findings provide insights into the
80 complex role of vaccination in strengthening healthcare systems to effectively manage future
81 outbreaks.

82

83 **Methods**

84 *Data collection*

85 This study focused on the first wave of the Omicron variant in the US, spanning from
86 December 11, 2021, to March 22, 2022 with 27,256,687 COVID-19 cases and 980,036
87 COVID-19-associated hospitalizations. We defined the study period as beginning when the
88 proportion of newly emerged Omicron variants exceeded 5% and ending when the daily
89 reported cases of the first Omicron wave reached a minimum level preceding the subsequent
90 wave (Figure S1). We collected daily state-level data on COVID-19 cases, hospital
91 admissions, and vaccination rates from the Centers for Disease Control and Prevention¹⁶.

92 The vaccine data included the daily cumulative percentage of fully vaccinated individuals
93 (either with a second dose of a two-dose vaccine or one dose of a single-dose vaccine)
94 (Figure S2), and daily cumulative percentage of people who received a booster.

95

96 We downloaded a total of 3,149,650 SARS-Cov-2 virus sequences from GISAID database ¹⁷,
97 covering all 50 states of the US and the District of Columbia (Table S3). Our analysis
98 focused on 19 key mutations on the Receptor Binding Domain (RBD) of the Omicron
99 variant¹⁸, which were grouped into three categories: (i) BA.1/BA.1.1-associated mutations,
100 including S371L, G496S, and G446S, (ii) shared mutations between BA.1/BA.1.1 and BA.2,
101 including G339D, S373P, S375F, K417N, N440K, S477N, T478K, E484A, Q493R, Q498R,
102 N501Y, and Y505H, and (iii) BA.2-associated mutations, including S371F, T376A, R408S,
103 and D405N (Figure 2D and Figure S5). See “SARS-CoV-2 genomic surveillance data
104 management” in Supplementary Materials for the procedure of the calculation of mutations.
105
106 Daily average temperature (Figure S3) and relative humidity (Figure S4) were collected from
107 the National Center for Environmental Information ¹⁸. The number of staffed inpatient beds
108 available each day was collected from the Department of Health and Human Services ¹⁹.
109 Daily average temperature and relative humidity for each state were computed by aggregating
110 data from all monitoring stations within the respective state.

111

112 *Adjusted effective vaccination coverage considering boosting and waning immunities*

113 Our analysis assumed that the effectiveness of the full vaccine against hospitalization
114 decreased to its lowest level after six months due to waning immunity, remained stable
115 thereafter, and then was restored after receiving a booster dose ²⁰. Based on this assumption,
116 we calculated the effective vaccination coverage (hereafter vaccination coverage, $Vac_i(t)$) by
117 summing the coverage after adjusting for vaccine waning and booster effects ²¹. Please see
118 Supplementary Material for the detailed calculations.

119

120 *Mediation analysis*

121 Causal mediation analysis²² was performed to determine whether virus mutation mediated
122 the relationship between vaccination coverage and CHR (Figure 1). This analysis followed
123 the classical causal steps approach²² in three steps: Step 1 (*Basic model*) involved modeling
124 the total effect of vaccination coverage on CHR (i.e., path a in Figure 1); Step 2
125 (*Intermediate model*) involved modeling the effect of vaccination coverage on the proportion
126 of virus mutations (i.e., path b); and Step 3 (*Mediation model*) involved modeling the direct
127 effect (i.e., path a') and indirect effect (i.e., path c) of vaccination coverage on CHR using.
128 Here, the direct effect refers to vaccine effectiveness against hospitalization and the indirect
129 effect refers to the change in CHR resulting from natural selection on immune-escape
130 mutations. If all of these paths (a, b, c, and a') are significant, and the direct effect is smaller
131 than the total effect ($a' < a$), the proportion of virus mutations can be concluded to be a
132 mediator between vaccine and CHR.

133

134 The *Intermediate model*, which investigated the impact of vaccination on the selection
135 coefficient for the Omicron variant, was formulated based on the evolutionary process
136 developed by Haldane JBS²³ and the selection coefficient developed by Chevin LM²⁴.

137 The selection coefficient, denoted by s , was defined as the rate of change in the logit-

138 transformed frequency of a new variant over time: $s = \frac{d \log\left(\frac{p(t)}{1-p(t)}\right)}{dt}$, where $p(t)$ is the

139 proportion of the new variant at t , the time since the growth of the variant. If selection

140 coefficient s was set to be proportional to the percentage of the hosts who are vaccinated (i.e.

141 effective vaccine coverage Vac_t as we used), we showed that the logit of new variant can be

142 modelled as $\log\left(\frac{p(t)}{1-p(t)}\right) = \int_0^t (Vac_t) dt$ (see “Determine the effect of vaccination

143 coverage on transmission of virus mutations (*Intermediate Models*)” in the Supplementary

144 Material). Furthermore, in a discrete-time setting with nonlinear effects, $\log\left(\frac{p(t)}{1-p(t)}\right) =$

145 $\sum_{lag=0}^{Max} cb(Vac_t, lag)$, where cb is the crossbasis function and Max is the maximum considered
 146 lag time. To account for both state-specific effects and nonlinear vaccine lag effects, we
 147 utilized generalized linear mixed models (GLMM) integrated with distributed lag non-linear
 148 models (DLNM). Hence, the equations of the three models are described as follows:

149

150
$$\log\left(\frac{CHR_{i,t}}{1-CHR_{i,t}}\right) = \alpha_i + aVac_{i,t-7} + \sum_{lag=0}^{14} cb(\text{Log}(\text{cases})_{i,t}, lag) + \beta_1 \text{Hospital capacity}_{i,t} +$$

 151
$$\beta_2 \text{Temp}_{it,1-14} + \beta_3 \text{RH}_{it,1-14} + I(\text{Holiday}_{i,t}) + I(\text{Weekend}_{i,t}) \dots\dots\dots \textit{Basic model}$$

152

153
$$\log\left(\frac{P_{Mut,i,t}}{1-P_{Mut,i,t}}\right) = \alpha + \sum_{lag=7}^{47} cb(Vac_{i,t}, lag) + \delta \text{Log}(\text{cases})_{i,t} \dots\dots\dots \textit{Intermediate model}$$

154

155
$$\log\left(\frac{CHR_{i,t}}{1-CHR_{i,t}}\right) =$$

 156
$$\alpha_i + a'Vac_{i,t-7} + \sum_{lag=0}^{14} cb(\text{Log}(\text{cases})_{i,t}, lag) + \sum_{Mut} \gamma_{Mut} P_{Mut,i,t} + \beta_1 \text{Hospital capacity}_{i,t} +$$

 157
$$\beta_2 \text{Temp}_{it,1-14} + \beta_3 \text{RH}_{it,1-14} + I(\text{Holiday}_{i,t}) +$$

 158
$$I(\text{Weekend}_{i,t}) \dots\dots\dots \textit{Mediation model}$$

159

160 where $CHR_{i,t}$ represented the daily COVID-19 case hospitalization rate for state i on day t ,
 161 and α_i was the state-level random intercept in the basic and mediation model. $Vac_{i,t}$ was the
 162 effective vaccination coverage, and $cb(Vac_{i,t}, lag)$ was a cross-basis function that modeled
 163 the lag-response relationship between vaccination coverage and CHR. The vaccination lag
 164 time was set between 7 and 47 days, assuming vaccinations produce protection around one
 165 week after the shot. $P_{Mut,i,t}$ referred to $P_{BA1,i,t}$, $P_{BA12,i,t}$, and $P_{BA2,i,t}$, the daily mean
 166 proportion of BA.1/BA.1.1-associated mutations, shared mutations between BA.1/BA.1.1
 167 and BA.2 subvariants, and BA.2-associated mutations, respectively. The dependent variable

168 is $\log\left(\frac{P_{Mut}}{1-P_{Mut}}\right)$, which has been used to estimate the selection coefficient on the vaccine

169 escape mutations in a previous modelling study (see equation 1) ⁹.

170 ***Potential confounders***

171 Daily COVID-19 cases, hospital capacity, meteorological factors, and weekend/holiday
172 indices, were added into the model according to the forward-stepwise AIC approach. The
173 best-fitting model (i.e. with the smallest AIC) was chosen as the final *Basic model* (Table S4).
174 Daily COVID-19 cases (i.e., $cases_{i,t}$) were included with a logarithmically transformed
175 relationship to CHR based on our observations (see Figure S13A). This accounted for the
176 impact of public health interventions on the incidence of infections (healthcare system load)
177 and therefore the CHR ²⁵. Hospital capacity ($Hospital\ capacity_{i,t}$) was measured by the
178 daily number of staffed inpatient beds available. Meteorological conditions, known to be
179 associated with COVID-19 severity ²⁶, were accounted using 14-day moving averages of
180 ambient temperature ($Temp_{it,1-14}$) and relative humidity ($RH_{it,1-14}$). Weekend and public
181 holiday effects were indexed as $I(Weekend_{it})$ and $I(Holiday_{it})$. A detailed description of
182 the models was provided in the Supplementary Material.

183

184 ***Impact of prior infection and sensitivity analysis***

185 To account for the immunity induced by prior natural infection, infection proportions were
186 incorporated into the *Basic*, *Intermediate*, and *Mediation models* in our sensitivity analysis.
187 The cumulative incidence of infections during the Delta wave (the latest before the study
188 period) was added to the effective vaccination coverage to represent total population
189 immunity. Infections prior to the Delta wave were excluded based on the assumption of
190 significantly waned immunity.

191

192 Moreover, we conducted another sensitivity analysis to assess the impact of decreased

193 vaccine effectiveness against hospitalization, assuming a decline to 80% efficacy after six
194 months of full vaccination.

195

196 **Results**

197 *Overview of the first Omicron wave in the United States*

198 During the first Omicron wave, the number of daily reported cases and hospital admissions
199 peaked in mid-January 2022, while the CHR experienced a temporary decline (Figure S1 and
200 Figure S6). The vaccination coverage varied significantly among states, seemingly reducing
201 cumulative hospitalizations per million population (Figure 2AB). For example, some
202 Southern states such as Oklahoma (OK), Arkansas (AR), and Alabama (AL) had lower
203 vaccination coverage (below 52%) concomitant with higher hospitalization burdens
204 (exceeding 3,669 per million); Conversely, some Northeastern states like Vermont (VT) and
205 Maine (ME) displayed higher vaccination coverage (above 64%) and lower hospitalization
206 burdens. Concurrently, the Delta variant was replaced by the Omicron variant (BA.1) and
207 subsequently by its subvariants, mainly BA 1.1 and BA. 2 (Figure 2C).

208

209 *State-level analysis of transmission and CHR*

210 We conducted a comparison of transmission and CHR between two groups of states: states
211 with high vaccination coverage (Group H) and states with low vaccination coverage (Group
212 L). The classification was based on whether their average coverage during the first Omicron
213 wave was above or below the national average of 59% across all states (see Table S1 for the
214 list of states by group). No significant difference was found in infection incidences between
215 Groups H and L (p-value > 0.05, Figures 3AC and S7A).

216

217 In contrast, in the Delta wave, Group H had significantly lower infection incidences than
218 Group L (Figure S8), suggesting Omicron's greater ability to evade immunity. While
219 transportation and population mobility could also influence infection incidences, we observed
220 that they were not the primary factors during the Omicron wave. Specifically, Group H had
221 lower population mobility compared to Group L (Figure S7BD), and there was no significant
222 difference in the timing of Omicron's arrival between the two groups (Figure S9).

223

224 Moreover, we found that Group H had a significant lower average daily CHR compared to
225 Group L (T-test, P -value <0.05 , Figure 3BD), which highlighted the beneficial impact of
226 vaccination on reducing hospitalizations. Interestingly, we observed a higher proportion of
227 Omicron mutations in Group H compared to Group L during the growth of the outbreaks (as
228 indicated by the grey shaded area in Figure 4A-C). When we applied a logit transformation to
229 these proportions, similar patterns were observed (Figure S19). This can be explained by the
230 transmission advantage of the Omicron mutations in the high-vaccine-coverage states. Hence,
231 the lower CHR observed in Group H was likely to be attributed to both the protective effect
232 of vaccination and the increased proportion of the Omicron variants.

233

234 To further explore whether this transmission advantage could also be related to population
235 mobility, we conducted an alternative study focusing on the period before vaccination (from
236 January 23, 2020 to December 31, 2020). In this period, we detected a significant correlation
237 between population mobility and the number of infections (Figures S10 and S11), suggesting
238 that the initial transmission of COVID-19 was predominantly influenced by population
239 mobility. Additionally, we found that both groups had low proportions of virus mutations
240 (Figure S12), indicating that these mutations did not confer a clear transmission advantage in
241 the absence of vaccination.

242

243 ***Mediation effect of virus mutations on the vaccine-CHR relationship***

244 We evaluated the mediation effect of virus mutations on the relationship between vaccination
245 and the CHR using a mediation analysis with three specific models: *Basic (Total-effect)*,
246 *Intermediate*, and *Mediation (Direct and indirect effects) models* (see Figure 1 and Methods).

247

248 After variable selection (Table S4), the best-fitting *Basic model* demonstrated that a higher
249 vaccination coverage was significantly associated with a lower CHR. A 25% increase in the
250 coverage resulted in a reduction of CHR with odd ratio (OR) of 0.37 (95% CI 0.36-0.38),
251 representing the total effect of vaccination coverage (Table 1).

252

253 The *Intermediate model*, which measured the impact of vaccination on the logit of the
254 frequency of a newly adapted variant (see Methods), found a significant positive correlation
255 between vaccination coverage and the proportion of Omicron mutations with about one-
256 month lag. For example, a 10% increase in vaccination coverage (from 50% to 60%) was
257 associated with a higher proportion of Omicron mutations at a lag of 47 days. The
258 corresponding ORs for the proportions of BA.1/BA.1.1 mutations, shared mutations between
259 BA.1/BA.1.1 and BA.2, and BA.2 mutations were 1.45 (95% CI 1.44, 1.46), 1.33 (95% CI
260 1.32, 1.34), and 1.49 (95% CI 1.46, 1.52) (Figure 4D-F). A lag of approximately one month
261 might be explained by those compensatory mutations are often required to restore or increase
262 the virus's fitness^{27,28,29}. A previous study observed compensatory epistasis in the Omicron
263 BA.1 variant contributed to maintaining its affinity to the angiotensin-converting enzyme 2
264 (ACE2) receptor²⁹.

265

266 We projected the spreads of these mutations under two extreme scenarios: low coverage
267 (45%) and high coverage (70%). We used the observed average coverage of 59% as a
268 reference (Figure 4G-I). The high coverage scenario showed a 20-30% higher in the
269 proportion of BA.1/BA.1.1-associated mutations or shared mutations between BA.1/BA.1.1
270 and BA.2 subvariant during their growth, compared with the low coverage scenario.
271 Furthermore, the proportion of BA.2-associated mutations rose over twice as quickly in the
272 high coverage scenario than the low coverage.

273

274 The *Mediation model* found that a 25% increase (from 45% to 70%) in vaccination coverage
275 was directly correlated with a lower CHR, with an OR of 0.85 (95% CI: 0.75, 0.97) (Table 1).
276 Indirectly, the model found this increase in the coverage corresponded to a 20% increase in
277 the proportion of BA.1/BA.1.1-associated mutations (Figure 4G), which were associated with
278 a lower CHR with an OR of 0.87 (95% CI: 0.84, 0.90) (Table 1). Together, the rise in
279 vaccination reduced CHR from 5.8% to 4.4% (see details in Supplementary Material), and
280 even excluding direct vaccine protection, CHR still decreased from 5.8% to 5.1% due to the
281 adaptation of Omicron variant as marginal effect. Similar patterns were observed with the
282 shared mutations between BA.1/BA.1.1 and BA.2 subvariants (Figure 4H), and BA.2-
283 associated mutations (Figure 4I and Table 1). Overall, we found that all relationships in the
284 three models (represented by the paths in Figure 1) were statistically significant, and the
285 direct effect of increased vaccination on CHR was smaller than the total effect. Meeting the
286 criteria for classical causal mediation (see Methods)²², the results suggested that the
287 adaptation of Omicron mutations acted as a mediator in the relationship between vaccination
288 coverage and CHR. We also conducted an alternative approach using Structural Equation
289 Modeling to validate our model and findings, showing consistent results (see Supplementary
290 Material).

291

292 Therefore, a higher vaccination coverage was associated with a higher proportion of immune-
293 escape variants. When these variants are less virulent, resulting in less severe infections
294 compared to previous variants or wild types, they can contribute to a lower CHR (Figure 5).
295 Conversely, the emergence of more virulent strains may potentially counteract the effect of
296 vaccine protection (see Figure S20 for a hypothetical scenario).

297

298 *Effects of confounders*

299 In addition to vaccination coverage and viral mutations, our analysis revealed additional
300 factors that had an impact on CHR. We observed negative associations between CHR and
301 daily mean temperature, relative humidity, and the number of staffed beds in hospitals (Table
302 1 and Supplementary Material). Interestingly, during the course of the outbreak, we noticed a
303 temporal pattern: a surge in the number of daily reported cases was linked to an immediate
304 reduction in CHR, followed by a subsequent increase in CHR approximately ten days later
305 (Figure S13B). We attribute this finding to the limited hospital capacity, which may lead to a
306 delay in the admission of certain severe cases.

307

308 *Model validation and sensitivity analysis*

309 We conducted an alternative approach using structural equation model to validate our model
310 and findings. The results confirmed a statistically significant indirect effect of the vaccine on
311 reducing CHR through increasing the proportion of Omicron mutations (see Figure S14 and
312 Supplementary Material).

313

314 In the sensitivity analyses, we first examined the impact of decreased vaccine effectiveness
315 against hospitalization, assuming the protection dropped to 80% of the original level six

316 months after full vaccination (Table S5, Figure S15). Second, we incorporated the effect of
317 pre-existing immunity into our analysis (Table S6, Figure S16). The results of these
318 sensitivity analyses were consistent with our primary findings (Table 1 and Figure 4).

319

320 **Discussion**

321 Our study found that higher vaccination coverage was associated with faster adaptation of the
322 new VOC, subsequently affecting the overall CHR. After linking the evolution theory to a
323 lagged regression model, the findings were derived from mediation analyses with mixed-
324 effect models along with genomic sequences among 50 US states and the District of
325 Columbia during the first Omicron wave. These results provide additional insights into
326 healthcare preparation for future outbreaks.

327

328 Vaccination has been expected to influence variant replacement by natural selection, but to
329 what extent remains unknown. Our model results showed that the increased vaccine-induced
330 immunity (from 45 to 70% coverage) was likely to speed up the replacement of Omicron
331 variants from few weeks (for BA.1 or BA.1.1) to few months (for BA.2) (Figure 4G-I).

332 Because the new Omicron variants were generally associated with less severe disease
333 outcomes¹⁵, CHR in the high-vaccine-coverage states was further reduced to a level similar
334 to the direct protection from vaccines. Meanwhile, many Western and Central European
335 countries (including the United Kingdom) had about 10% higher vaccination coverage than
336 the US by late 2021³⁰. The earlier spread of Omicron, especially BA.2, has been observed in
337 many of these countries than the US. Vaccines, were likely to play an important role, at least
338 in part, in this early spread of BA.2.

339

340 Understanding the effect of vaccine on the VOC adaptation is important in decision-making
341 in healthcare preparation and vaccine strategy⁴. Our results raised an important question:
342 What is the role of vaccines in balancing the prevention between massive transmission and
343 severe outcomes? Designing vaccine strategies should consider not only the effectiveness and
344 waning protection of vaccines but also the impacts on the spread of newly emerging variants.
345 The study offers new insight into vaccine strategy for reducing hospitalization risk by
346 shortening [or maintaining] the circulation of more [or less] virulent variants.

347

348 Cautionary insights arise from the study, highlighting that while vaccines provide direct
349 protection against CHR, their indirect effect via the immune selection may sometimes be less
350 beneficial or even result in negative impacts in certain scenarios. For example, in cases where
351 a new VOC is more severe than its predecessor, a faster spread of this VOC selected by high
352 partial population immunity can potentially increase CHR (Figure S20). Therefore, vigilant
353 surveillance of the severity of new strains becomes critical to assess the healthcare system's
354 demand, even in regions with high vaccination coverage.

355

356 Our results suggested that vaccine effectiveness studies could consider the dynamic interplay
357 between vaccination coverage rate and viral evolution. In addition to the waning immunity,
358 the change in vaccine effectiveness might be affected by the emergence of new variants³¹.
359 Adjusting for the heterogeneity of vaccination coverage (such as county-level vaccination
360 rate) seems to be important to measure the waning of immunity as the model used by Lin et al
361³¹. Similarly, vaccine strategy modelling studies may incorporate the mechanism of the
362 replacement of circulating viruses to predict its impact on healthcare system.

363

364 This study has several limitations to consider. First, certain confounders, such as air pollution,
365 personal self-medical treatments and under reporting might also impact CHR. Second, while
366 our study did not directly incorporate infected travelers between countries and states, we
367 observed no significant differences in the arrival times of Omicron between states (Figure S9).
368 Our model incorporated the number of cases as a confounder, representing the combined
369 effect of traveling and social distancing. Third, it is important to note that our focus was
370 restricted to evaluating the impact of vaccination coverage on the adaptation (replacement) of
371 new mutations. We did not explore the rate of the emergence of viral immune escape variants
372 under vaccination pressure.

373

374 **Acknowledgement**

375 We thank City University of Hong Kong and Hong Kong Institute for Advanced for
376 supporting this work, and we thank all of the researchers for generating and sharing genome
377 data openly via GISAID. We thank Prof. Sarah Cobey at the University of Chicago for her
378 valuable comments and contributions, which greatly enhanced the quality of our research.

379

380 **Authors contributions**

381 Jingbo Liang collected epidemiological data, conducted the analyses, and wrote the first draft
382 of the manuscript. Zhaojun Ding collected the genomic sequential data, calculated the
383 mutation prevalence. Qingpeng Zhang provided important comments, and edited the
384 manuscript. Hsiang-Yu Yuan conceptualized and designed the study, provided important
385 comments, and edited the manuscript. All authors read and approved the manuscript.

386

387 **Ethics approval**

388 Not applicable. No formal ethical review and informed consent were required, as the data
389 used in this analysis were collected from online open datasets and all data were de-identified
390 and aggregated to the state-level as described in the manuscript.

391

392 **Funding**

393 City University of Hong Kong [#9610416].

394

395 **Declaration of interests**

396 All authors declare no competing interests.

397

398

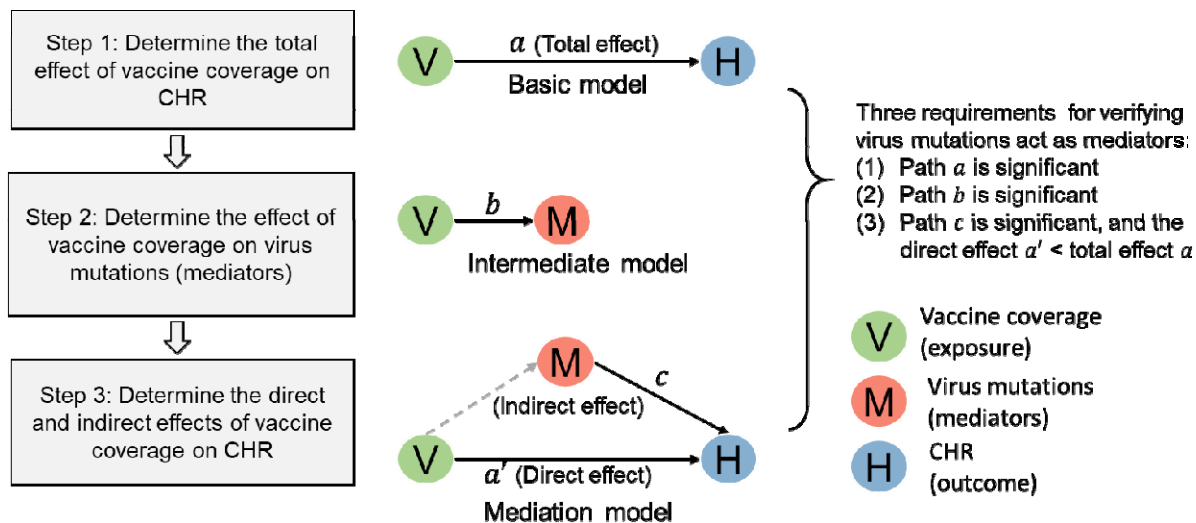
399 **References**

- 400 1 Ends Covid World Health Emergency Designation.
401 <https://www.nytimes.com/2023/05/05/health/covid-who-emergency-end.html> (accessed
402 May 8, 2023).
- 403 2 Cobey S, Larremore DB, Grad YH, Lipsitch M. Concerns about SARS-CoV-2 evolution should
404 not hold back efforts to expand vaccination. *Nat Rev Immunol* 2021; **21**: 330–5.
- 405 3 Bushman M, Kahn R, Taylor BP, Lipsitch M, Hanage WP. Population impact of SARS-CoV-2
406 variants with enhanced transmissibility and/or partial immune escape. *Cell* 2021; **184**: 6229-
407 6242.e18.
- 408 4 Saad-Roy CM, Morris SE, Metcalf CJE, *et al.* Epidemiological and evolutionary considerations
409 of SARS-CoV-2 vaccine dosing regimes. *Science (1979)* 2021; **372**: 363–70.
- 410 5 Fox SJ, Lachmann M, Tec M, *et al.* Real-time pandemic surveillance using hospital admissions
411 and mobility data. *Proc Natl Acad Sci U S A* 2022; **119**: e2111870119.
- 412 6 Iacobucci G. Covid-19: How is vaccination affecting hospital admissions and deaths? *BMJ*
413 2021; **374**: n2306.
- 414 7 Agrawal U, Bedston S, McCowan C, *et al.* Severe COVID-19 outcomes after full vaccination of
415 primary schedule and initial boosters: pooled analysis of national prospective cohort studies
416 of 30 million individuals in England, Northern Ireland, Scotland, and Wales. *The Lancet* 2022;
417 **400**: 1305–20.
- 418 8 Tenforde MW, Self WH, Adams K, *et al.* Association Between mRNA Vaccination and COVID-
419 19 Hospitalization and Disease Severity. *JAMA* 2021; **326**: 2043–54.

- 420 9 Gandon S, Lion S. Targeted vaccination and the speed of SARS-CoV-2 adaptation. *Proc Natl*
421 *Acad Sci U S A* 2022; **119**: e2110666119.
- 422 10 Gillespie JH. *The Causes of Molecular Evolution*. Oxford University Press, 1991.
- 423 11 Grenfell BT, Pybus OG, Gog JR, *et al*. Unifying the Epidemiological and Evolutionary Dynamics
424 of Pathogens. *Science (1979)* 2004; **303**: 327–32.
- 425 12 Nyberg T, Ferguson NM, Nash SG, *et al*. Comparative analysis of the risks of hospitalisation
426 and death associated with SARS-CoV-2 omicron (B.1.1.529) and delta (B.1.617.2) variants in
427 England: a cohort study. *Lancet* 2022; **399**: 1303–12.
- 428 13 Veneti L, Bøås H, Kristoffersen AB, *et al*. Reduced risk of hospitalisation among reported
429 COVID-19 cases infected with the SARS-CoV-2 Omicron BA.1 variant compared with the Delta
430 variant, Norway, December 2021 to January 2022. *Eurosurveillance* 2022; **27**: 2200077.
- 431 14 Imai N, Rawson T, Knock ES, *et al*. Quantifying the effect of delaying the second COVID-19
432 vaccine dose in England: a mathematical modelling study. *Lancet Public Health* 2023; **8**:
433 e174–83.
- 434 15 ECDC SARS-CoV-2 variants of concern. [https://www.ecdc.europa.eu/en/covid-19/variants-](https://www.ecdc.europa.eu/en/covid-19/variants-concern)
435 [concern](https://www.ecdc.europa.eu/en/covid-19/variants-concern) (accessed Dec 6, 2023).
- 436 16 COVID Data Tracker. <https://covid.cdc.gov/covid-data-tracker/#datatracker-home> (accessed
437 June 4, 2022).
- 438 17 GISAID dataset. <https://gisaid.org/> (accessed Sept 14, 2022).
- 439 18 McCallum M, Czudnochowski N, Rosen LE, *et al*. Structural basis of SARS-CoV-2 Omicron
440 immune evasion and receptor engagement. *Science (1979)* 2022; **375**: 894–8.
- 441 19 The United States Department of Health and Human Services (HHS). <https://www.hhs.gov/>
442 (accessed Oct 18, 2022).
- 443 20 Andrews N, Tessier E, Stowe J, *et al*. Duration of Protection against Mild and Severe Disease
444 by Covid-19 Vaccines. *New England Journal of Medicine* 2022; **386**: 340–50.
- 445 21 Yang L, Wang Z, Wang L, *et al*. Association of vaccination, international travel, public health
446 and social measures with lineage dynamics of SARS-CoV-2. *Proc Natl Acad Sci U S A* 2023; **120**:
447 e2305403120.
- 448 22 Baron RM, Kenny DA. The moderator-mediator variable distinction in social psychological
449 research: conceptual, strategic, and statistical considerations. *J Pers Soc Psychol* 1986; **51**:
450 1173–82.
- 451 23 Haldane JBS. *The causes of evolution*. Princeton University Press, 1990
452 <https://press.princeton.edu/books/paperback/9780691024424/the-causes-of-evolution>
453 (accessed June 23, 2024).
- 454 24 Chevin LM. On measuring selection in experimental evolution. *Biol Lett* 2011; **7**: 210–3.
- 455 25 Flaxman S, Mishra S, Gandy A, *et al*. Estimating the effects of non-pharmaceutical
456 interventions on COVID-19 in Europe. *Nature* 2020 **584**:7820 2020; **584**: 257–61.

- 457 26 Ma Y, Zhao Y, Liu J, *et al.* Effects of temperature variation and humidity on the death of
458 COVID-19 in Wuhan, China. *Science of The Total Environment* 2020; **724**: 138226.
- 459 27 Koelle K, Rasmussen DA. The effects of a deleterious mutation load on patterns of influenza
460 A/H3N2's antigenic evolution in humans. *Elife* 2015; **4**: e07361.
- 461 28 Gayvert K, McKay S, Lim WK, *et al.* Evolutionary trajectory of SARS-CoV-2 genome shifts
462 during widespread vaccination and emergence of Omicron variant. *npj Viruses* 2023 **1**:1 2023;
463 **1**: 1–10.
- 464 29 Moulana A, Dupic T, Phillips AM, *et al.* Compensatory epistasis maintains ACE2 affinity in
465 SARS-CoV-2 Omicron BA.1. *Nature Communications* 2022 **13**:1 2022; **13**: 1–11.
- 466 30 SARS-CoV-2 sequences by variant. [https://ourworldindata.org/grapher/covid-variants-](https://ourworldindata.org/grapher/covid-variants-bar?time=2022-04-25&facet=none)
467 [bar?time=2022-04-25&facet=none](https://ourworldindata.org/grapher/covid-variants-bar?time=2022-04-25&facet=none) (accessed Dec 6, 2023).
- 468 31 Lin DY, Xu Y, Gu Y, *et al.* Effects of COVID-19 vaccination and previous SARS-CoV-2 infection
469 on omicron infection and severe outcomes in children under 12 years of age in the USA: an
470 observational cohort study. *Lancet Infect Dis* 2023; **23**: 1257–65.
- 471
- 472

Examine the mediation effect of virus mutations on the relationship between vaccine coverage and CHR



473

474

Figure 1 The flow of determining the mediation effect of Omicron mutations on the

475

relationship between vaccination coverage and the COVID-19 CHR. Three steps were

476

required to validate the mediation effect. Each step modelled the effect of paths using one of

477

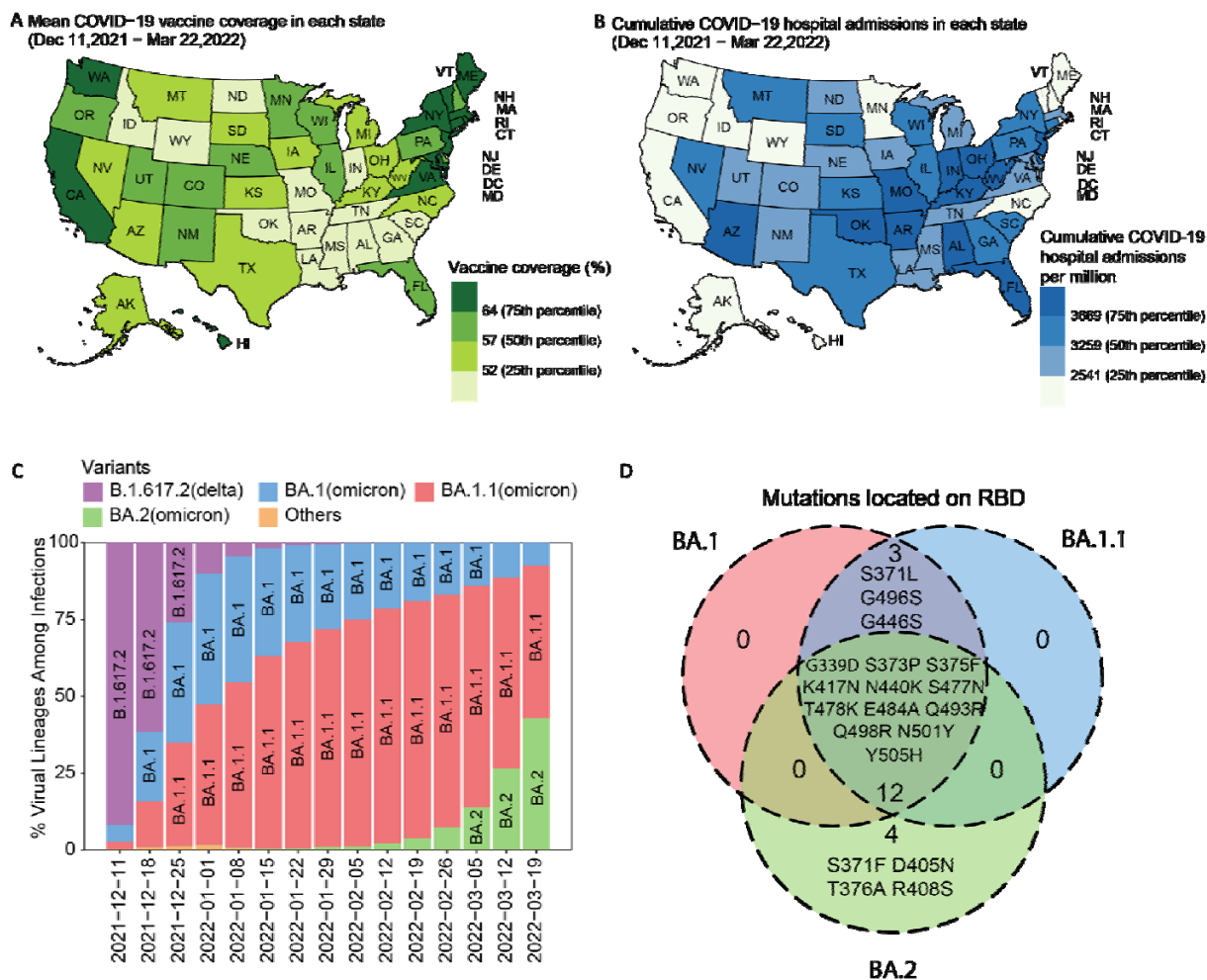
the three models (i.e., *basic (total effect)*, *intermediate*, and *mediation model*). Vaccination

478

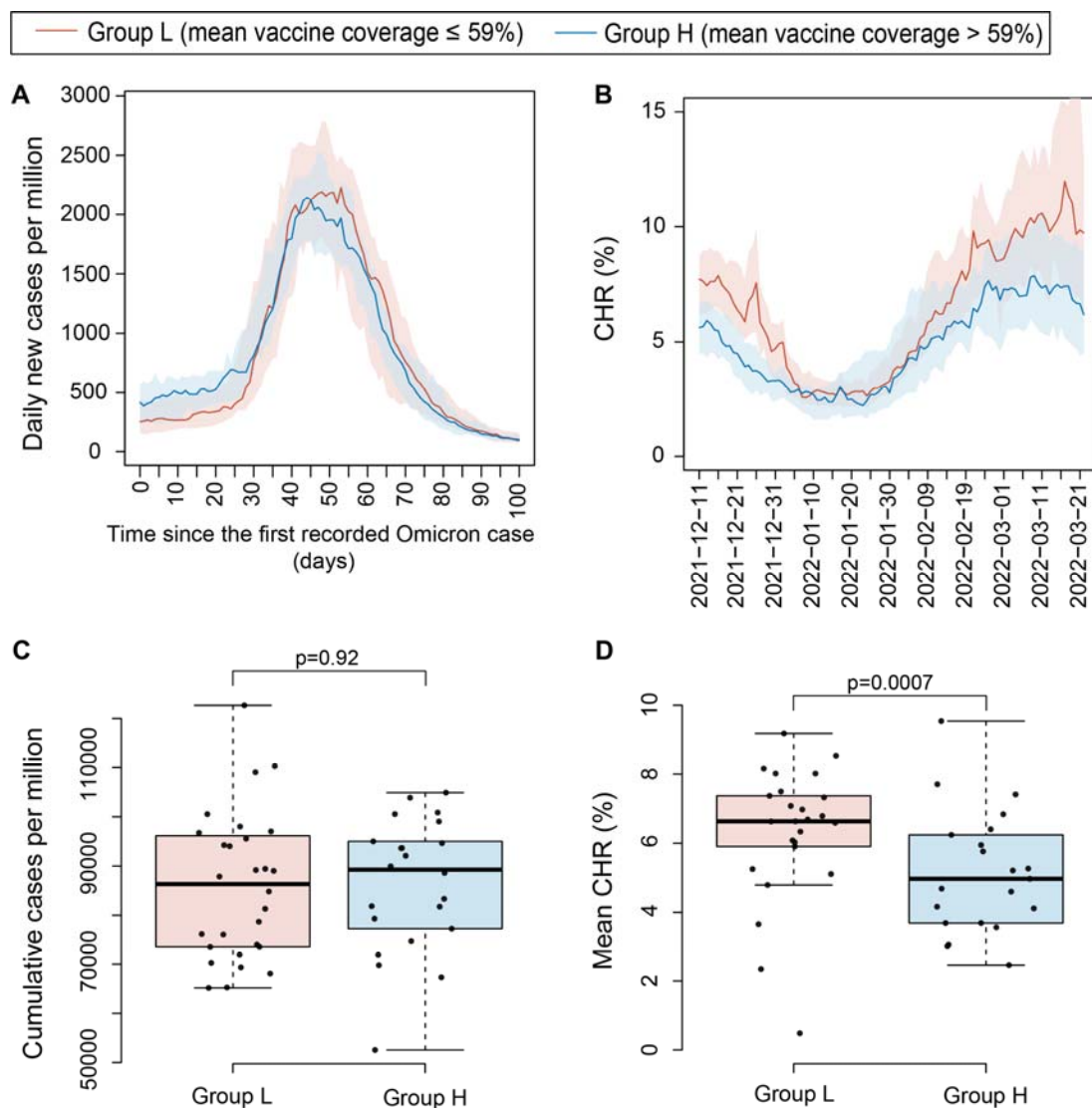
coverage (V) represented the exposure; virus mutations (M) represented the mediators; and

479

CHR (H) represented the outcome in the models.

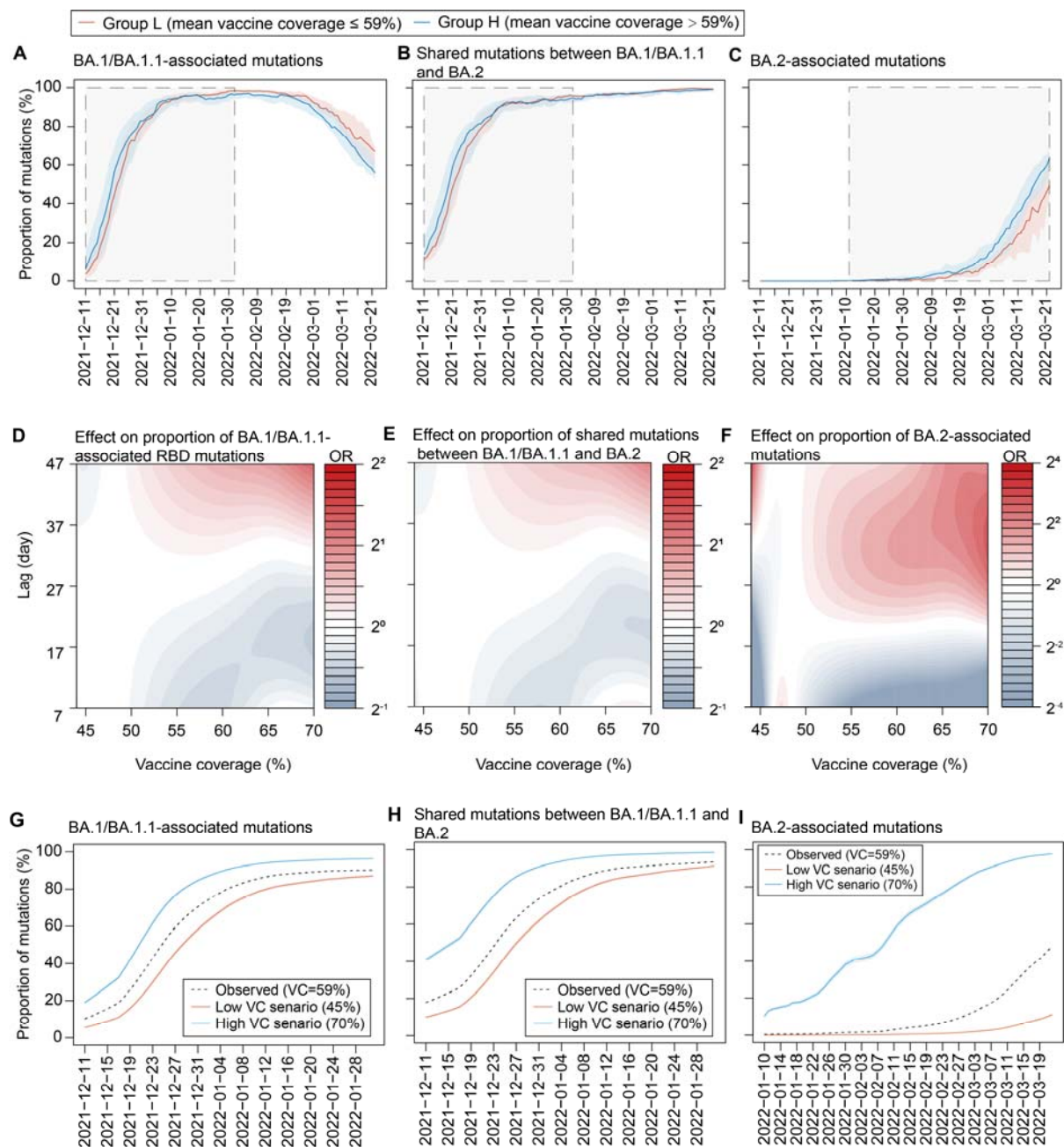


480
 481 **Figure 2 Vaccination coverages, cumulative hospital admissions, and the proportion of**
 482 **virus variants during the first Omicron wave in the United States. (A)** Average
 483 vaccination coverage during the first Omicron wave (i.e., December 11, 2021 to March 22,
 484 2022) at the state level. (B) The state-level cumulative COVID-19 hospital admissions (per
 485 million) during the first Omicron wave. (C) The proportion of variants that circulated in the
 486 US during the first Omicron wave (obtained from CDC¹⁴). (D) Venn plots of the important
 487 mutations (RBD) of the BA.1, BA.1.1, and BA.2 subvariants.



488

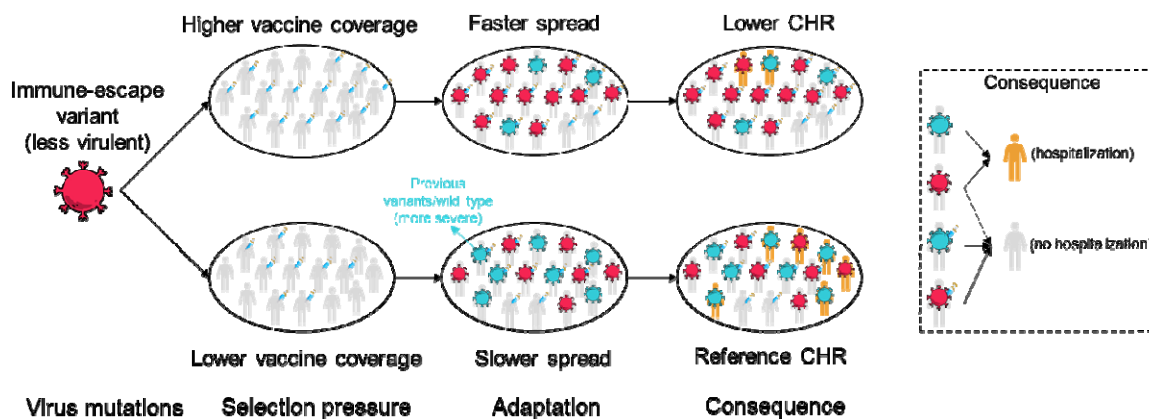
489 **Figure 3 Comparisons of the COVID-19 transmission and CHR between the states with**
490 **high and low vaccination coverages. (AB)** The daily number of cases per million and daily
491 CHR for the states with low vaccination coverage (Group L) and with high vaccination
492 coverage (Group H). The red and blue lines represent the median value of Group L and H,
493 respectively, and the shaded areas represent the interquartile range. (CD) Box plots of
494 cumulative cases per million and average daily CHR during the first Omicron wave for states
495 in Group L and Group H.



496

497 **Figure 4 Estimated effects of vaccination coverage on the transmission of Omicron**
 498 **mutations from the intermediate models. (A-C)** Mean proportion of BA.1/BA.1.1-
 499 associated mutations, shared mutations between BA.1/BA.1.1 and BA.2 subvariants, and
 500 BA.2-associated mutations in Group L (with low vaccination coverage) and Group H (with
 501 high vaccination coverage) states. The grey-shaded areas represented the period during which
 502 the proportion of the mutation grew. The mean proportion of BA.1 associated mutations is
 503 the average daily proportion of S371L, G496S, and G446S; mean proportion of BA.2-
 504 associated mutations is the average daily proportion of S371F, T376A, R408S, and D405N;

505 mean proportion of shared mutations between BA.1/BA.1.1 and BA.2 is the average daily
506 proportion of G339D, S373P, S375F, K417N, N440K, S477N, T478K, E484A, Q493R,
507 Q498R, N501Y, and Y505H. (D-F) Relationships between vaccination coverage and the
508 proportion of three types of mutations at different time lags. Redder colors indicated higher
509 OR of mutation proportion. (G-I) The estimated proportions of BA.1/BA.1.1-associated
510 mutations, shared mutations between BA.1/BA.1.1 and BA.2 subvariants, and BA.2-
511 associated mutations under scenarios of constant vaccination coverage (VC) at 45% and 70%.
512 The observed proportion of mutations (indicated by the dashed line) under the actual VC
513 conditions (with an average value of 59%) was assumed as the reference point.
514



515

516 **Figure 5 The impact of vaccination on enhancing transmission potential of new**
517 **immune-escape variant and the resulting impact on the overall CHR.** This figure
518 illustrated the impact of vaccination on the adaptation of emerging immune-escape variants
519 and its consequential effects on the CHR. High vaccination coverage might create a selection
520 pressure that accelerate the rapid spread and adaptation of new immune-escape variants. If
521 these variants are less virulent than the wild type or previously observed variants, a
522 corresponding reduction in the CHR is anticipated.

523

524 **Table 1.** Effects of factors on COVID-19 CHR in the *Basic model* and *Mediation model*. The
 525 *Basic model* estimated the total effect of vaccination on the CHR. The *Mediation model*
 526 estimated both the direct effect of vaccination and the mediation effect of the proportion of
 527 Omicron mutations on the CHR.

	<i>Basic model</i> (CHR~vaccine)		<i>Mediation model</i> (CHR~vaccine+virus mutation)	
	OR (95%CI)	P value	OR (95%CI)	P value
Vaccine				
Vaccination coverage (25%)	0.369 (0.355, 0.383)	<0.001	0.853 (0.754, 0.966)	0.012
Virus mutations				
Mean proportion of BA.1/BA.1.1-associated mutations (20%)	-	-	0.870 (0.839, 0.901)	<0.001
Mean proportion of BA.2-associated mutations (20%)	-	-	0.868 (0.852, 0.884)	<0.001
Mean proportion of shared mutations between BA.1/BA.1.1 and BA.2 (20%)	-	-	0.994 (0.975, 1.014)	0.573
Confounders				
Temperature (5°C)	1.088 (1.083, 1.092)	<0.001	1.084 (1.077, 1.091)	<0.001
Relative humidity (5%)	1.018 (1.015, 1.020)	<0.001	1.013 (1.010, 1.015)	<0.001
Hospital beds (1000)	1.003 (1.002, 1.004)	<0.001	1.003 (1.001, 1.004)	<0.001
Weekend (Yes vs No)	1.001 (0.997, 1.005)	0.592	1.002 (0.998, 1.007)	0.293
Holiday (Yes vs No)	1.030 (1.021, 1.039)	<0.001	1.021 (1.011, 1.030)	<0.001

528