

1 **Title page**

2 **From Past to Present: Pompe Disease, Pseudodeficiency Alleles, and Diagnostic Challenges**

3 Florencia Giliberto^{1,2}, Paula Inés Buonfiglio³, Gabriel Capellino⁴, Carmen Llamas Massini^{1,2},

4 Viviana Dalamón³, Leonela Luce^{1,2,5}, Micaela Carcione^{1,2}

5 ¹Laboratorio de Distrofinopatías, Cátedra de Genética, Facultad de Farmacia y Bioquímica,

6 Universidad de Buenos Aires, Buenos Aires, Argentina.

7 ²Instituto de Inmunología, Genética y Metabolismo (INIGEM), UBA-CONICET-Hospital de

8 Clínicas “José de San Martín”, Buenos Aires, Argentina.

9 ³Laboratorio de Fisiología y Genética de la Audición. Instituto de Investigaciones en

10 Ingeniería Genética y Biología Molecular “Dr. Héctor N. Torres” (INGEBI-CONICET).

11 ⁴Centro Médico – ROENTGEN.

12 ⁵John Walton Muscular Dystrophy Research Centre, Translational and Clinical Research

13 Institute, Newcastle University and Newcastle Hospitals NHS Foundation Trust, Newcastle

14 upon Tyne, United Kingdom

15 Corresponding Author:

16 Prof. PhD. Florencia Giliberto

17 Universidad de Buenos Aires

18 Departamento de Microbiología, Inmunología, Biotecnología y Genética

19 Buenos Aires, Argentina

20 giliberto@flor@gmail.com

21

22 **Keywords:** POMPE, PSEUDODEFICIENCY, DIAGNOSTIC, OCULOPHARYNGEAL MUSCULAR

23 DYSTROPHY, GENETIC VARIANTS and NEUROMUSCULAR DISORDERS.

24 **Funding**

25 This study was supported by grants from the University of Buenos Aires (UBACYT: UBACyT

26 2020-No20020190100332BA).

27

28 **Graphical abstract**

From Past to Present: Pompe Disease, Pseudodeficiency Alleles, and Diagnostic Challenges

Conflicting interpretation of pseudodeficiency allele c.271G>A(*GAA*)

Alterations in *GAA* gene are related to autosomal recessive Glycogen storage disease II (Pompe disease)



Controversial case of the Italian mummy Cangrade della Scala, suspected death by digitalis poisoning

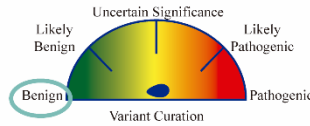
Whole Exome Sequencing

GAA: c.1465G>A ✓
GAA: c.271G>A ⚠️

Change death hypothesis: Late-onset Pompe disease (LOPD)? ☠️

Variant curation of c.271G>A allele

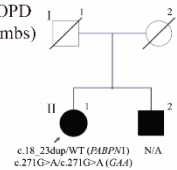
The variant was classified following the ACMG and specific *GAA* guidelines
 Revision was done together with the Lysosomal Diseases Variant Curation Expert Panel



Variant c.271G>A in *GAA* gene is interpreted as Benign

Case II with same pseudodeficiency allele

II1: Clinical suspicion of LOPD
 Onset: In their 30s (lower limbs)
 Brother with similar clinical picture



Whole Exome Sequencing

Causative variant c.18_23dup in *PABPN1* gene associated with Oculopharyngeal muscular dystrophy
 Also carried homozygous c.271G>A variant in *GAA*

Strict variant curation is crucial for therapeutic decisions and avoiding inappropriate treatments that may arise from incorrect diagnoses

29

30

31

32 **Abstract**

33 Pompe disease is an autosomal recessive disorder caused by *GAA* variants leading to acid
34 alpha-glucosidase deficiency. Diagnosis is challenging due to the variable phenotypic
35 presentation and overlap with other conditions. Traditionally, diagnosis relies on measuring
36 enzyme activity, but next-generation sequencing (NGS) advancements have improved
37 accuracy. However, interpreting variants is complex, especially because pseudodeficiency
38 alleles mimic disease-causing variants. We present two patients harboring the
39 pseudodeficiency allele NM_000152.5(*GAA*):c.271G>A, p.Asp91Asn, which is confusing due
40 to inaccurate reports and results related to enzymatic activity. The first case was a recently
41 published controversial case of a 700-year-old mummy in which the authors classified the
42 variant as pathogenic. The second patient had symptoms compatible with late-onset Pompe
43 disease and was homozygous for the variant. We aimed to determine the correct variant
44 classification using *GAA*:c.271G>A as a model and to achieve a genetic diagnosis of the second
45 patient. This variant was analyzed following international guidelines (ACMG-AMP) and
46 reviewed with the Lysosomal Diseases Variant Curation Expert Panel. The second patient
47 underwent NGS. We demonstrated that *GAA*:c.271G>A meets the criterion of being classified
48 as benign for Pompe. Additionally, the second patient carried a heterozygous pathogenic
49 *PABPN1* variant associated with oculopharyngeal muscular dystrophy, which better explained
50 the clinical features. This underscores the importance of expanding the genetic analysis in the
51 presence of pseudodeficiency alleles that can mask the true cause of the disease and
52 highlights the fact that an accurate diagnosis should adhere to guidelines on variant curation
53 to reduce the risk of misdiagnosis, which could result in inadequate care and risky medical
54 decisions.

55

56 Introduction

57 Pompe disease, also named glycogen storage disease type II or acid maltase deficiency, is a
58 rare genetic disorder with an autosomal recessive inheritance pattern. Globally, the
59 prevalence of this disease is estimated to be between 5,000 and 10,000 people, with an
60 incidence of 1 in 57,000 people for the late-onset form [1]. Pompe disease is caused by
61 alterations in the *GAA* gene, leading to a deficiency of acid alpha-glucosidase, a crucial
62 lysosomal enzyme for degrading glycogen [2–4]. Its deficiency causes glycogen accumulation
63 in lysosomes, leading to progressive cellular dysfunction and cell death. It primarily affects
64 neurons and skeletal, smooth and cardiac muscles, resulting in muscle function impairment
65 and progressive and irreversible deterioration [5].

66 Pompe disease exhibits significant clinical heterogeneity, variation is based on the age of
67 onset and symptoms progression. Residual acid alpha-glucosidase activity determines the
68 onset of the disease. Infantile-onset Pompe disease (IOPD) is the most severe form of the
69 disease and occurs when the enzyme activity is less than 1%, conversely, late-onset Pompe
70 disease (LOPD) occurs when the residual enzyme activity ranges between 2% and 30% [4].
71 Symptoms of IOPD include progressive muscle weakness, hypotonia since birth, severe
72 respiratory problems, hypertrophic cardiomyopathy, and hepatomegaly. Patients also often
73 experience delays in motor development, such as difficulties in sitting, crawling, or walking
74 [2,5]. However, symptoms in LOPD patients can have a juvenile or adult onset, and patients
75 tend to develop symptoms more slowly than IOPD patients. Patients may present progressive
76 muscle weakness, respiratory problems that worsen in advanced stages, muscle pain, fatigue,
77 and difficulty in walking. Muscle atrophy and proximal weakness are also common features
78 of this disease [1].

79 The type of molecular alteration and its location in the *GAA* gene often predict the clinical
80 phenotype of Pompe disease [6]. To date, more than 300 alterations in *GAA* have been
81 described [2–4]. Most (96%) of them are single nucleotide variants (SNVs), while only 4% are
82 copy number variants (CNVs). Therefore, sequencing is the ideal strategy for executing the
83 *GAA* genetic diagnostic algorithm [7,8].

84 The measurement of acid alpha-glucosidase activity in dried blood spots was traditionally the
85 primary method for diagnosing Pompe disease. In recent years, the advances and
86 popularization of NGS technologies have led to a paradigm shift toward genetic/molecular
87 diagnosis. To reduce arbitrariness in the classification of identified sequence variants, the
88 American College of Medical Genetics and Genomics (ACMG) and the Association for
89 Molecular Pathology (AMP) have developed international consensus guidelines to estimate a
90 score based on collected evidence that allows variant classification into one of five possible
91 categories: pathogenic (≥ 10), likely pathogenic (6 to 9), uncertain significance (0 to 5), likely
92 benign (-1 to -6), or benign (≤ -7) [9]. Current recommendations indicate that the diagnosis of
93 Pompe disease should be established when both a deficit of acid alpha-glucosidase enzyme
94 and two pathogenic *trans* variants in the *GAA* gene are detected [10]. Accurate and early
95 diagnosis of Pompe disease is even more relevant now that an enzyme replacement therapy
96 for treating these patients has been approved [11,12].

97 It should be noted that diagnosing Pompe disease can be challenging. Clinically speaking, the
98 variable presentation of the disease and the symptoms overlap with other conditions and
99 often delay diagnosis. Additionally, the interpretation of *GAA* variants can be complex,
100 especially in the presence of pseudodeficiency alleles, which can mimic disease-causing
101 variants. The main difficulty lies in the fact that pseudodeficiency alleles exhibit low acid

102 alpha-glucosidase enzyme activity in *in vitro* tests, which can be indistinguishable from the
103 pathological deficiency observed in these tests [13]. Therefore, additional biochemical
104 analyses are required to distinguish between true enzyme deficiency leading to Pompe
105 disease and pseudodeficiency alleles that have no clinical impact [10]. To facilitate variant
106 interpretation, the ClinGen Lysosomal Diseases Variant Curation Expert Panel recently
107 adapted the ACMG-AMP guidelines for the classification of molecular alterations involved in
108 metabolic storage diseases and the development of specific criteria for the analysis of *GAA*
109 variants [14].

110 Here, we present two cases in which the pseudodeficiency allele
111 NM_000152.5(*GAA*):c.271G>A, p.Asp91Asn, also known as *GAA2*, was identified. The first is
112 a controversial case of a 700-year-old mummy published in 2021, where the authors classified
113 the change as pathogenic and as an LOPD case, confusing the interpretation of the variant
114 within the scientific community [15]. The second patient referred to our laboratory was
115 clinically suspected of presenting LOPD. We demonstrated the importance of adhering to
116 international guidelines for accurate classification of variants that follow Mendelian
117 inheritance using this pseudodeficiency allele as a model. Finally, our goal was to achieve a
118 definitive and accurate diagnosis of the second patient, underscoring the critical role of
119 precise genetic diagnosis in guiding appropriate clinical management.

120 **Materials and Methods**

121 *Patient*

122 The patient, hereafter called "Case 2", was referred by a neurologist to the
123 Dystrophinopathies Laboratory (INIGEM, UBA-CONICET-Hospital de Clínicas "José de San
124 Martín") with a clinical suspicion of Pompe disease. Muscle strength was evaluated manually

125 using the Medical Research Council (MRC) scale [16]. Alpha-glucosidase activity was
126 measured from dried blood spots, with reference values between 2.10 and 29.00 $\mu\text{mol/L/h}$.
127 The protocol was approved by the Institutional Review Board. Informed consent was obtained
128 from the study subjects prior to the molecular studies.

129 *Samples and NGS Sequencing*

130 Genomic DNA (gDNA) was extracted from peripheral blood lymphocytes of patient 2 following
131 the cetyltrimethylammonium bromide (CTAB) protocol [17]. Then, whole exome sequencing
132 (WES) was performed using the Illumina NovaSeq Sequencing Platform and the Agilent
133 SureSelect V6-post as a capture kit (coverage>20X: 91.7%; MacroGen Service, Korea). Aligned
134 reads were compared to the human reference genome assembly GRCh38. WES results were
135 filtered by an *in silico* panel that included the approximately 700 genes described in the work
136 titled "The 2024 version of the gene table of neuromuscular disorders (nuclear genome)" [18].
137 Variant filtering and analysis consisted of evaluating several parameters, such as inheritance
138 patterns, variant location, variant type (e.g., missense variants, splice site alterations, and
139 coding in-frame and nonframeshift indels), and variant frequency in population databases
140 such as gnomAD [<https://gnomad.broadinstitute.org/>]. Published reports of pathogenicity
141 and data from resources such as ClinVar [<https://www.ncbi.nlm.nih.gov/clinvar/>] were also
142 integrated. Pathogenicity predictions were performed using REVEL
143 [<https://sites.google.com/site/revelgenomics>]. The gathered data were synthesized, and
144 variant classifications were determined using tools such as Varsome [<https://varsome.com/>]
145 and the Franklin Platform [<https://franklin2.genoox.com/>]. All the implemented databases,
146 tools and platforms were last accessed on 26.08.2024. [9]

147 *Classification of variants*

148 Variants were classified following the international ACMG-AMP guidelines [9]. The variant
149 NM_000152.5(GAA):c.271G>A, p.Asp91Asn, was assessed by applying *the* latest specific
150 guidelines from the Lysosomal Diseases Expert Panel (ClinGen LSD VCEP)
151 [<https://clinicalgenome.org/affiliation/50009/>] [14].

152 **Results**

153 *Case 1: Clinical characteristics*

154 The proband is the Cangrande della Scala (1291–1329 CE), a prominent figure from medieval
155 Italy known for his military and political accomplishments as the Lord of Verona. Due to the
156 destruction of the Scaliger family archives, the little we know about his health relies on
157 limited, ambiguous and, often, biased historical accounts. Contemporary sources indicate
158 that Cangrande suffered from several bouts of illness throughout his life. At the age of 23, he
159 presented a significant ailment that temporarily hindered his mobility. Later, at the age of 34,
160 he suffered from a severe and prolonged illness that was nearly fatal. Last, at the age of 38
161 years, he died from an illness vaguely described as *fluxum*, often interpreted as vomiting or
162 diarrhea. The accounts report that his last three days were marked by fever and
163 gastrointestinal symptoms. In 2004, an autopsy and a toxicology analysis performed on
164 Cangrande's mummified remains detected toxic doses of digitalis in his preserved organs,
165 which could be interpreted as poisoning or as a remedy for a cardiac condition. Overall, the
166 above mentioned accounts are nonspecific and could be due to various conditions, ranging
167 from battle injuries to infectious or chronic diseases.

168 *Case 2: Clinical characteristics*

169 The proband (II.1) had an onset in their 30s, with proximal weakness, predominantly in the
170 lower limbs. Physical examination revealed 4/5 strength in the flexors and extensors of the
171 neck, deltoids, biceps, triceps, psoas, quadriceps, gluteal muscles, hamstrings, and abdominal

172 muscles, with an inability to stand up. Reflexes were preserved. The patient reported
173 swallowing difficulties. Muscle MRI revealed moderate atrophy with fatty infiltration in the
174 gluteal and hamstring muscles. During their last evaluation, in their 70s, the patient exhibited
175 4/5 weakness in the deltoids, biceps, eyelids, quadriceps, psoas, and gluteal muscles. The
176 alpha-glucosidase activity was 1.68 $\mu\text{mol/L/h}$, which was slightly lower than the reference
177 value.

178 The patient's brother (II.2) exhibited a similar clinical picture, but he declined to participate in
179 the genetic testing (Figure 1A). The proband reported that her deceased parents showed no
180 visible signs of muscle weakness compatible with LOPD.

181 *Classification of the NM_000152.5(GAA):c.271G>A, p.Asp91Asn variant*

182 The *GAA2* variant was found in a heterozygous state together with the pathogenic
183 NM_000152.5(GAA):c.1465G>A in the mummy from case 1 and in a homozygous state in case
184 2. Therefore, to reclassify the variant and provide genetic diagnosis, evidence was gathered
185 from various literature reviews and databases and rigorously analyzed. A summary of the
186 applied criteria is provided in Table 1. Notably, there is evidence indicating that the *GAA2*
187 variant affects splicing and *in vitro* enzymatic activity; however, this effect was proven to be
188 compensated by an increase in substrate concentration [13,19,20]. Therefore, neither the PS3
189 nor the BS3 criteria were applied. Additionally, BA1 was implemented given the variant's high
190 allele frequency in general population databases, a criterion that could not be excluded owing
191 to the lack of strong and solid evidence supporting its pathogenicity. Overall, the *GAA2* variant
192 meets the criterion of being classified as benign for Pompe disease. Moreover, the correlation
193 between the presence of *GAA2* and decreased alpha-glucosidase activity indicated that the
194 variant was a pseudodeficiency allele.

195 *Classification of the NM_004643.4 (PABPN1):c.18_23dup variant*

196 To provide a genetic diagnosis for patient 2 and due to the reclassification of the *GAA2* variant
197 as benign, the WES analysis was expanded to other genes with clinical features overlapping
198 with LOPD. This screening revealed a heterozygous 6-nucleotide duplication in *PABPN1*
199 [NM_004643.4 (*PABPN1*):c.18_23dup]. This gene is associated with autosomal dominant
200 oculopharyngeal muscular dystrophy (OPMD; OMIM #602279), a disease caused by the
201 abnormal expansion of GCN trinucleotide repeats. The detected duplication resulted in an
202 expansion of the GCG triplet, leading to the addition of two alanine residues in the polyalanine
203 tract region (Figure 1). Evidence was gathered to classify the variant, and a score of 10 points
204 was achieved, reaching the pathogenic classification. A summary of the applied criteria is
205 provided in Table 2. Therefore, the proband was diagnosed with OPMD instead of the
206 suspected late-onset Pompe disease.

207 **Discussion**

208 For several years, the interpretation of the *NM_000152.5(GAA):c.271G>A pseudodeficiency*
209 *allele has led to controversy among the scientific community* due to its inaccurate *in vitro*
210 enzymatic activity [13,19–21]. Iadarola *et al.* (2021) further contributed to this confusion by
211 classifying the variant as pathogenic in a renowned journal in 2021 [15]. Furthermore, the
212 authors concluded that Cangrande della Scala suffered from LOPD; thus, he was the first
213 known case of this disease. These authors based their conclusions on the interpretation of
214 insufficient, imprecise and biased clinical data obtained from limited reliable sources over 7
215 centuries of age, together with the finding of two variants in the *GAA* gene (the
216 pseudodeficiency allele c.271G>A and a pathogenic variant c.1465G>A) in the mummified
217 sample. According to the current diagnostic guidelines for Pompe disease, which requires

218 both a decreased GAA enzymatic activity and two pathogenic GAA *in trans* variants, there are
219 several reasons why it is incorrect to assert that Cangrande had LOPD [10,22,23]. First, due to
220 the nature of the sample, it was not possible to measure the alpha-glucosidase activity.
221 Second, the authors did not prove with 100% certainty that the GAA changes were in trans.
222 Third and most importantly, based on the evidence available to date Cangrande, the mummy,
223 carried a single heterozygous pathogenic GAA variant, and the NM_000152.5(GAA):c.271G>A,
224 p.Asp91Asn, which is interpreted as benign for Pompe disease. Therefore, based on the
225 available historical data and autopsy findings, there is no clear or compelling evidence
226 sufficient to determine that Cangrande della Scala suffered from Pompe disease or any other
227 specific lysosomal storage disorder. The existing medical records and interpretations remain
228 vague and insufficient to draw definitive conclusions about underlying health issues.
229 The most important outcome from the reanalysis of this case is that, in collaboration with the
230 ClinGen Lysosomal Storage Disorders Expert Panel, the variant was successfully reclassified as
231 benign in ClinVar [<https://www.ncbi.nlm.nih.gov/clinvar/variation/4020/>].

232 In the second case, the patient, with clinical suspicion of LOPD, was genetically diagnosed with
233 OPMD owing to a pathogenic heterozygous variant in polyadenylate-binding protein nuclear
234 1 (PABPN1). The protein encoded by *PABPN1* plays a crucial role in adding poly(A) tails to the
235 3' ends of pre-messenger RNAs during messenger RNA maturation in the nucleus. Moreover,
236 *PABPN1* is involved in regulating poly(A) tail length and mRNA stability, as well as in mediating
237 mRNA transport from the nucleus to the cytoplasm and degradation [24]. OPMD is a rare,
238 late-onset autosomal dominant neuromuscular disorder characterized by proximal muscle
239 weakness, ptosis, and difficulty in swallowing [25]. The molecular mechanism of this
240 pathology is associated with an abnormal expansion of the GCN trinucleotide repeat

241 (between 11 and 18 repeats) in the *PABPN1* gene [26]. The pathophysiology of OPMD involves
242 repeat expansions in the *PABPN1* gene, resulting in the production of a mutated protein that
243 forms toxic aggregates in muscles, disrupting RNA processing and causing progressive muscle
244 degeneration [26].

245 Despite being distinct disorders, OPMD and Pompe disease present significant clinical overlap
246 [1]. These patients share clinical features such as progressive muscle weakness, dysphagia,
247 and, to a lesser extent, ptosis and proximal muscle involvement. However, Pompe disease is
248 distinguished by a more significant respiratory engagement and a more generalized muscle
249 weakness [1,27]. Overall, Case 2 illustrates the importance of considering a differential
250 diagnosis when faced with ambiguous enzymatic and genetic results.

251 On the one hand, this case allowed us to confirm that the patient's decreased *in vitro* acid
252 alpha-glucosidase enzymatic activity was due to the pseudodeficiency variant in
253 homozygosity and that it was not associated with the patient's final diagnosis which was
254 OPMD [10]. Hence, caution should be taken when considering these cases, as
255 pseudodeficiency alleles can mask the underlying cause of the disease if they are not carefully
256 evaluated using 4-MUG as a substrate [10]. Moreover, if the patient in case 2 had been
257 diagnosed with LOPD, she would have undergone unnecessary enzyme replacement therapy,
258 while the OPMD would have remained undetected. On the other hand, patient 2 serves as an
259 example exome analysis scope, as it permits *in silico* panel customization to find alterations
260 in genes that are not the primary clinical suspicion.

261 In summary, we have established a global consensus on the classification of the
262 NM_000152.5(*GAA*):c.271G>A, p.Asp91Asn variant as benign considering all the available
263 evidence to date, analyzed in accordance with the latest international guidelines. The

264 experience gained reaffirms that the accurate diagnosis of rare genetic diseases requires
265 adherence to international consensus guidelines and a thorough evaluation of genetic
266 variants. This helps prevent diagnostic errors and improves the quality of medical care.
267 Furthermore, precise genetic diagnosis and strict variant curation are crucial for guiding
268 therapeutic decisions and avoiding inappropriate treatments that may arise from incorrect
269 diagnoses. Ensuring that variants are accurately classified allows for better-informed clinical
270 choices, ultimately benefiting patient outcomes by tailoring therapy to the correct underlying
271 condition. Finally, sharing data with reliable results is vital for future reinterpretations of
272 variants, so we encourage the scientific and medical community to contribute to this mission.

273 **Data availability statement**

274 The genetic variant data that support the findings of this study are openly available in LOVD3
275 database: *GAA* and *PABPN1* variants submission link:
276 <https://databases.lovd.nl/shared/individuals/00453583>.

277 **References**

- 278 1. Cupler EJ, Berger KI, Leshner RT, Wolfe GI, Han JJ, Barohn RJ, et al. Consensus treatment
279 recommendations for late-onset Pompe disease. *Muscle Nerve*. 2012;45: 319–333.
- 280 2. Taglia A, Picillo E, D’Ambrosio P, Cecio MR, Viggiano E, Politano L. Genetic counseling in
281 Pompe disease. *Acta Myol*. 2011;30: 179–181.
- 282 3. de Faria DOS, ’t Groen SLMI, Hoogeveen-Westerveld M, Nino MY, van der Ploeg AT,
283 Bergsma AJ, et al. Update of the Pompe variant database for the prediction of clinical
284 phenotypes: Novel disease-associated variants, common sequence variants, and results
285 from newborn screening. *Hum Mutat*. 2021;42: 119–134.
- 286 4. Peruzzo P, Pavan E, Dardis A. Molecular genetics of Pompe disease: a comprehensive
287 overview. *Ann Transl Med*. 2019;7: 278.
- 288 5. Kishnani PS, Steiner RD, Bali D, Berger K, Byrne BJ, Case LE, et al. Pompe disease diagnosis
289 and management guideline. *Genet Med*. 2006;8: 267–288.
- 290 6. Kroos M, Hoogeveen-Westerveld M, van der Ploeg A, Reuser AJJ. The genotype-

- 291 phenotype correlation in Pompe disease. *Am J Med Genet C Semin Med Genet.*
292 2012;160C: 59–68.
- 293 7. Thuriot F, Gravel E, Hodson K, Ganopolsky J, Rakic B, Waters PJ, et al. Molecular Diagnosis
294 of Pompe Disease in the Genomic Era: Correlation with Acid Alpha-Glucosidase Activity
295 in Dried Blood Spots. *J Clin Med Res.* 2021;10. doi:10.3390/jcm10173868
- 296 8. Taverna S, Cammarata G, Colomba P, Sciarrino S, Zizzo C, Francofonte D, et al. Pompe
297 disease: pathogenesis, molecular genetics and diagnosis. *Aging .* 2020;12: 15856–15874.
- 298 9. Richards S, Aziz N, Bale S, Bick D, Das S, Gastier-Foster J, et al. Standards and guidelines
299 for the interpretation of sequence variants: a joint consensus recommendation of the
300 American College of Medical Genetics and Genomics and the Association for Molecular
301 Pathology. *Genet Med.* 2015;17: 405–424.
- 302 10. Niño MY, Wijgerde M, de Faria DOS, Hoogeveen-Westerveld M, Bergsma AJ, Broeders
303 M, et al. Enzymatic diagnosis of Pompe disease: lessons from 28 years of experience. *Eur*
304 *J Hum Genet.* 2021;29: 434–446.
- 305 11. Dalmia S, Sharma R, Ramaswami U, Hughes D, Jahnke N, Cole D, et al. Enzyme
306 replacement therapy for late-onset Pompe disease. *Cochrane Database Syst Rev.*
307 2023;12: CD012993.
- 308 12. van der Beek NAME, Hagemans MLC, van der Ploeg AT, Reuser AJJ, van Doorn PA. Pompe
309 disease (glycogen storage disease type II): clinical features and enzyme replacement
310 therapy. *Acta Neurol Belg.* 2006;106: 82–86.
- 311 13. Swallow DM, Kroos M, Van der Ploeg AT, Griffiths B, Islam I, Marenah CB, et al. An
312 investigation of the properties and possible clinical significance of the lysosomal alpha-
313 glucosidase GAA*2 allele. *Ann Hum Genet.* 1989;53: 177–184.
- 314 14. Goldstein JL, McGlaughon J, Kanavy D, Goomber S, Pan Y, Deml B, et al. Variant
315 Classification for Pompe disease; ACMG/AMP specifications from the ClinGen Lysosomal
316 Diseases Variant Curation Expert Panel. *Mol Genet Metab.* 2023;140: 107715.
- 317 15. Iadarola B, Lavezzari D, Modi A, Degli Esposti C, Beltrami C, Rossato M, et al. Whole-
318 exome sequencing of the mummified remains of Cangrande della Scala (1291-1329 CE)
319 indicates the first known case of late-onset Pompe disease. *Sci Rep.* 2021;11: 21070.
- 320 16. Medical Research Council. *Aids to the Examination of the Peripheral Nervous System.*
321 1976.
- 322 17. Murray MG, Thompson WF. Rapid isolation of high molecular weight plant DNA. *Nucleic*
323 *Acids Res.* 1980;8: 4321–4325.
- 324 18. Benarroch L, Bonne G, Rivier F, Hamroun D. The 2024 version of the gene table of
325 neuromuscular disorders (nuclear genome). *Neuromuscul Disord.* 2024;34: 126–170.
- 326 19. Martiniuk F, Bodkin M, Tzall S, Hirschhorn R. Identification of the base-pair substitution

- 327 responsible for a human acid alpha glucosidase allele with lower “affinity” for glycogen
328 (GAA 2) and transient gene expression in deficient cells. *Am J Hum Genet.* 1990;47: 440–
329 445.
- 330 20. Goina E, Musco L, Dardis A, Buratti E. Assessment of the functional impact on the pre-
331 mRNA splicing process of 28 nucleotide variants associated with Pompe disease in GAA
332 exon 2 and their recovery using antisense technology. *Hum Mutat.* 2019;40: 2121–2130.
- 333 21. Löscher WN, Huemer M, Stulnig TM, Simschitz P, Iglseder S, Eggers C, et al. Pompe
334 disease in Austria: clinical, genetic and epidemiological aspects. *J Neurol.* 2018;265: 159–
335 164.
- 336 22. Musumeci O, Toscano A. Diagnostic tools in late onset Pompe disease (LOPD). *Ann Transl
337 Med.* 2019;7: 286.
- 338 23. van der Ploeg AT, Kruijshaar ME, Toscano A, Laforêt P, Angelini C, Lachmann RH, et al.
339 European consensus for starting and stopping enzyme replacement therapy in adult
340 patients with Pompe disease: a 10-year experience. *Eur J Neurol.* 2017;24: 768–e31.
- 341 24. Kühn U, Wahle E. Structure and function of poly(A) binding proteins. *Biochim Biophys
342 Acta.* 2004;1678: 67–84.
- 343 25. Robinson DO, Wills AJ, Hammans SR, Read SP, Sillibourne J. Oculopharyngeal muscular
344 dystrophy: a point mutation which mimics the effect of the PABPN1 gene triplet repeat
345 expansion mutation. *J Med Genet.* 2006;43: e23.
- 346 26. Brais B, Bouchard JP, Xie YG, Rochefort DL, Chrétien N, Tomé FM, et al. Short GCG
347 expansions in the PABP2 gene cause oculopharyngeal muscular dystrophy. *Nat Genet.*
348 1998;18: 164–167.
- 349 27. Toscano A, Montagnese F, Musumeci O. Early is better? A new algorithm for early
350 diagnosis in late onset Pompe disease (LOPD). *Acta Myol.* 2013;32: 78–81.

351 **Acknowledgments**

352 We would like to thank the Lysosomal Diseases Expert Panel (ClinGen LSD VCEP)
353 [<https://clinicalgenome.org/affiliation/50009/>] for the recommendations on classifying the
354 NM_000152.5(GAA):c.271G>A, p.Asp91Asn variant. We thank Dr. Eleonora Katz for reviewing
355 and editing the English writing of this work.

356 **Author Contribution Statement**

357 Conceived and designed the methodology: F.G. and P.I.B. Analysis of clinical history and
358 medical aspects: F.G., G.C. and C.L.M. Analyzed patient samples: F.G. and M.C. Analyzed and

359 discussed the data: F.G., P.I.B., G.C., C.L.M., V.D., L.L. and M.C. Wrote the paper: F.G., P.I.B.,
360 V.D. and M.C. All the authors reviewed the manuscript.

361 **Ethical Approval**

362 The study was conducted in accordance with the Declaration of Helsinki and approved by the
363 Institutional Review Board (or Ethics Committee) of Facultad de Farmacia y Bioquímica
364 (06122023-167) and by the Institutional Review Board (or Ethics Committee) of Hospital de
365 Clínicas “José de San Martín” (1218-23).

366 **Competing Interests**

367 The authors declare no competing interests.

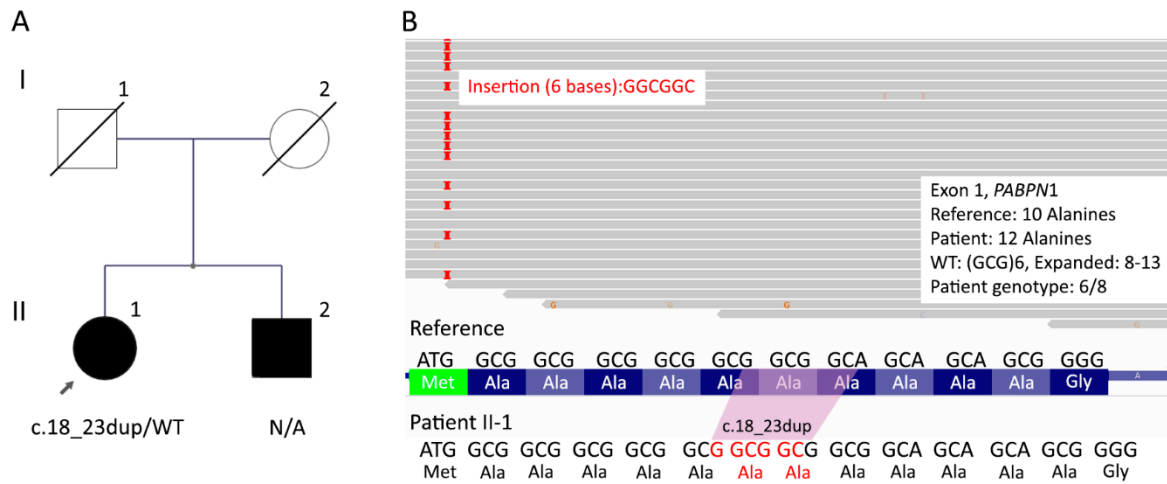
368

369

370

371

372 **Figure 1**



373

374 Figure 1: Case 2 presentation. A: Pedigree of the affected family. The proband is

375 indicated by an arrow. N/A: Not available. WT: wild-type allele. B: Visualization of the

376 proband's sequencing reads via IGV, demonstrating the expansion of the GCG triplet in

377 exon 1 of the *PABPN1* gene, resulting in two additional alanines in the protein.

378

379 **Table 1:** Summary of the rules applied for the interpretation of the variant
380 NM_000152.5(GAA):c.271G>A (p.Asp91Asn)

Applied Rules	Explanation	Reference/Evidence
BA1 (Stand alone)	Allele frequency is 3.29% (4183/127102, 70 homozygous in non-Finnish European population) in GnomAD v2.1.1	[gnomad.broadinstitute.org]
BP2 (Supporting)	Observed in Cis with a pathogenic variant in patients with POMPE.	PMID: 16838077, 33073003, 27189384(28–30)
BP4 (Supporting)	REVEL score of 0.396, which is below the threshold of 0.5 for the pathogenicity effect. The SpliceAI splicing predictor predicts that the variant has no impact on splicing.	Revel and SpliceAI predictor scores were determined with the Variant Effect Predictor tool [https://www.ensembl.org/Tools/VEP]
BS2 (Strong)	Observed in a healthy adult individual for a recessive (homozygous), dominant (heterozygous), or X-linked (hemizygous) disorder, with full penetrance expected at a young age.	[gnomad.broadinstitute.org]

381

382

383 **Table 2:** Summary of the rules applied for the interpretation of the variant
384 *PABPN1*(NM_004643.4):c.18_23dup (p.Ala10_Ala11dup)

Applied Rules	Explanation	Reference/Evidence
PM1 (Moderate)	Located in a critical and well-established mutational hot spot and/or functional domain (e.g., active site of an enzyme) without benign variation.	11 reported pathogenic or probably pathogenic variants were found in a 25 bp region surrounding this variant in exon 1 without any benign variants.
PS1 (Strong)	Same amino acid change as a variant previously reported as pathogenic	High-certainty ClinVar pathogenic variants. Variant ID: 2437738; Chr14:23321487:G>GGCGGA
PS4 (Moderate)	The prevalence of the variant in affected individuals is significantly higher compared to that in controls.	Reported in ClinVar in cases of affected SCV000330133: "The c.18_23dup pathogenic variant in the <i>PABPN1</i> gene has been reported previously in individuals with oculopharyngeal muscular dystrophy in four families (Brais et al. 1998)"(26) SCV001248587: "Reported in affected case by submitting lab"
PM2 (Supporting)	Extremely low frequency in gnomAd population databases	[gnomad.broadinstitute.org]
PP4 (Supporting)	Patient's phenotype or family history is highly specific for a disease with a single genetic etiology.	The c.18_23dup pathogenic variant in the <i>PABPN1</i> gene has been reported previously in individuals with oculopharyngeal muscular dystrophy in four families (26)

385

386