

1           **Title:** Persistently high TB prevalence in Nairobi County neighbourhoods, 2015-2022

2 Jane R. Ong'ang'o<sup>1\*</sup>, Jennifer Ross<sup>2</sup>, Richard Kiplimo<sup>3</sup>, Cheryl Kerama<sup>1</sup>, Khai Hoan Tram<sup>2</sup>, Jerry S. Zifodya<sup>4</sup>, Nellie  
3 Mukiri<sup>5</sup>, Erick Nyadimo<sup>1</sup>, Martha Njoroge<sup>1</sup>, Aiban Ronoh<sup>6</sup>, Immaculate Kathure<sup>6</sup>, Dickson Kirathe<sup>6</sup>, Thomas R.  
4 Hawn<sup>2,7</sup>, Videlis Nduba<sup>1</sup>, David J. Horne<sup>2,7</sup>

5  
6 <sup>1</sup>Centre for Respiratory Diseases Research, Kenya Medical Research Institute, Nairobi, Kenya

7 <sup>2</sup>Department of Medicine, University of Washington, Seattle, WA, USA

8 <sup>3</sup>Amref Health Africa, Nairobi Kenya

9 <sup>4</sup>Section of Pulmonary, Critical Care & Environmental Medicine, Tulane University, New Orleans, LA, USA

10 <sup>5</sup> National TB Reference Laboratory, Ministry of Health, Kenya

11 <sup>6</sup> National TB, Leprosy and Lung Disease Programme, Ministry of Health, Kenya

12 <sup>7</sup> Department of Global Health, University of Washington, Seattle, WA, USA

13  
14 \*Corresponding author: [jrnabongo@gmail.com](mailto:jrnabongo@gmail.com) (JRO)

15  
16  
**NOTE: This preprint reports new research that has not been certified by peer review and should not be used to guide clinical practice.**

## Abstract

National and sub-national population-based surveys, when performed at intervals, may assess important changes in TB prevalence. In 2022 we re-surveyed nine Nairobi County neighbourhoods that were previously surveyed in 2015. We aimed to determine pulmonary TB prevalence, compare prevalence to 2015 estimates, and evaluate changes in risk groups. Participants who reported cough of any duration and/or whose chest x-ray suggested TB submitted sputum for smear microscopy, Xpert Ultra, and liquid culture. We defined prevalent TB as *Mycobacterium tuberculosis* detection by sputum Xpert or culture, excepting individuals who were only trace positive. Our methods differed from 2015, which used solid media, Xpert MTB/RIF, and cough duration >2 weeks. We calculated TB prevalence using random-effects logistic regression models with missing value imputations and inverse probability weighting. In 2022 among 6369 participants, 1582 submitted  $\geq 1$  sputum sample, among whom 42 (2.7%) had TB, a weighted TB prevalence of 806/100,000 (95% confidence interval (CI), 518-1096). An additional 31 (2.0%) participants tested Ultra trace-positive/culture-negative. For comparison to 2015, we excluded 2022 participants (n=2) whose only criterion for sputum was cough <2 weeks. There was no evidence for a decline in overall TB prevalence from 2015 to 2022. TB prevalence among men was high (1368/100,000) but unchanged compared to 2015 (p-value = 0.50). The age group with the highest estimated prevalence remained people ages 45–54 years. Among people with prevalent TB who reported cough, 76% had not sought health care. Dissimilar from other serial surveys that showed declines in TB prevalence, we found persistently high TB prevalence over a 7-year period in Nairobi County. Limitations of this study include changes in methodology between the two surveys and complex effects of the COVID-19 pandemic.

**Key words: TB prevalence, Nairobi county neighbourhoods, Xpert Ultra**

## 40 Introduction

41 An estimated 10·6 million people fell ill with tuberculosis (TB) globally in 2022, an increase compared to 10·3  
42 million in 2021 [1]. The number of people officially reported with TB in 2022 was 7.5 million, the highest number  
43 since global TB monitoring started in 1995. The global gap between estimated and reported number of people  
44 with TB, 3·1 million in 2022, contributes disproportionately to TB deaths, TB transmission, and perpetuates  
45 challenges in developing TB control policies [2]. There is an urgent need for strategies to increase the proportion  
46 of people with TB who are diagnosed and to decrease the time to diagnosis.

47  
48 Kenya is categorized as one of 30 high TB burden countries globally, with an estimated 128,000 people who  
49 developed TB in 2022 [1], among whom more than 40% were not reported to the national TB program. In 2015-  
50 16, Kenya conducted a nationwide TB prevalence survey, the first since 1958 [3, 4]. Through this effort, there was  
51 an upward revision of the national TB prevalence rate to 348 per 100,000 population, compared to a pre-survey  
52 estimate of 233/100,000 [3]. Additional findings were that only 46% of Kenyans with TB were diagnosed and  
53 started on treatment, with the largest gaps among people 25-34 years and those over 65, and that 65% of people  
54 with symptomatic TB had not sought health care prior to the survey.

55  
56 Population-based TB prevalence surveys offer the most accurate estimates of TB burden [5]. National and sub-  
57 national surveys, when performed at short intervals, may assess trends in TB prevalence, evaluate the impact of  
58 public health interventions, identify characteristics associated with differences in TB prevalence and inform public  
59 health responses. Although several Asian countries [6-9] have recently performed serial national or sub-national  
60 TB prevalence surveys using WHO protocols, to our knowledge, this has not occurred in any country on the  
61 African continent [10].

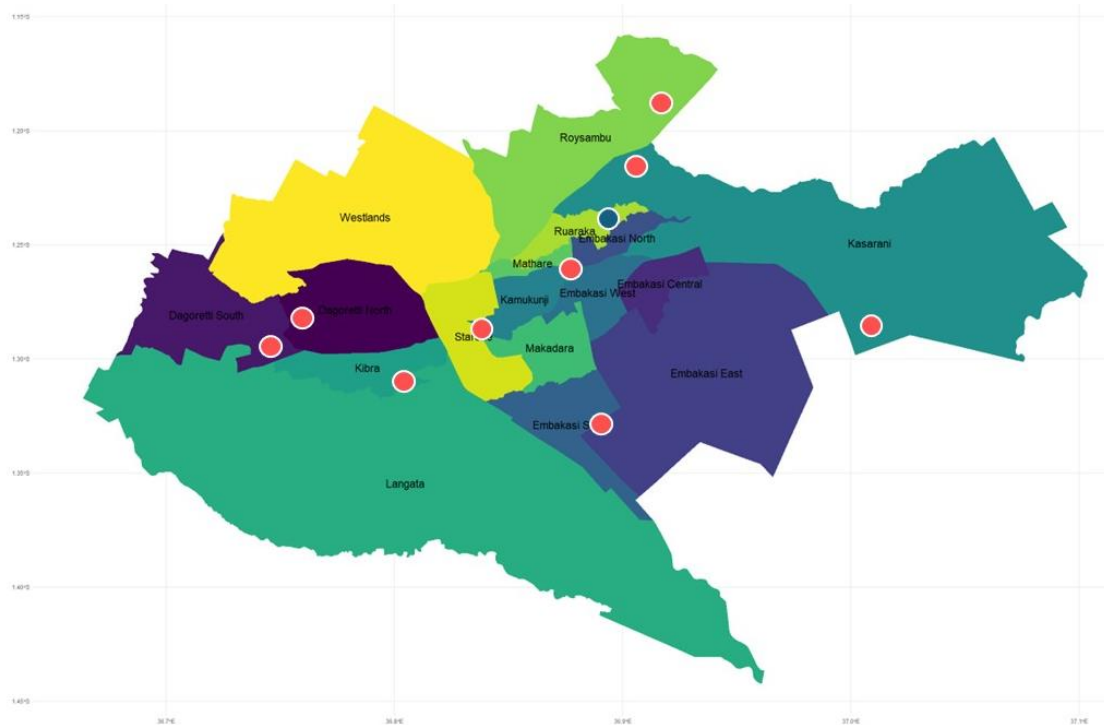
62  
63 Nairobi County, home to Kenya's capital city, reported 10,598 patients diagnosed with drug-susceptible TB in  
64 2021 (13·6% of all Kenyan TB notifications), the highest number of any Kenyan county [11]. We performed a  
65 limited prevalence survey by re-visiting nine of the ten geographic clusters in Nairobi County that were previously

66 surveyed in the 2015-16 Kenya national prevalence survey. We aimed to determine the prevalence of  
67 bacteriologically-confirmed pulmonary tuberculosis in those 15 years and older, evaluate temporal trends in TB  
68 prevalence over a 7-year period (2015 to 2022), and characterize the health care seeking behavior of persons  
69 with TB. We hypothesized that TB prevalence decreased between 2015 and 2022 in the setting of the prior survey,  
70 the COVID-19 pandemic, and declines in estimated TB incidence nationally in Kenya [1].

## 72 Methods and materials

### 73 Survey design and target population

74 We performed a cluster-based cross-sectional survey, enrolling participants between May and December 2022  
75 using the WHO recommended protocol [5]. Each cluster was defined using the same geographical borders as the  
76 2015-16 prevalence survey (Fig. 1) [4]. Due to funding, we surveyed nine of 10 clusters included in the 2015-16  
77 survey. Individuals were eligible for enrollment if they were aged 15 years and above, had resided in the surveyed  
78 household for at least 30 days prior to the survey date, and provided informed consent.



79  
80 **Fig 1. Map of Nairobi, Kenya with surveyed geographic clusters (red) and excluded cluster (blue).**

## 81 Target Enrollment

82 Based on the methods used in the 2015-16 survey [4], a sample size of 6,480 adults was targeted in the nine  
83 clusters with an estimated average of 720 adults enrolled from each cluster (allowable cluster range 650-790).  
84 All the clusters were urban.

## 86 Survey Field Procedures

### 87 Pre-survey procedures

88 Prior to deploying the survey field teams, engagement visits were made to appropriate officials at the county and  
89 cluster levels to sensitize local authorities on the survey and to obtain their support for survey interventions.  
90 Mapping of cluster borders (based on those used in the 2015-16 survey) occurred in this pre-survey phase.

### 92 Survey field procedure at households

93 Study clusters were surveyed one at a time using two field-based teams, a mobilization team and an active survey  
94 team. The former engaged in community sensitization and mobilization while the latter conducted the survey. In  
95 each cluster, the mobilization team performed a door-to-door census using a listing questionnaire to identify  
96 eligible residents aged 15 years and above until reaching 650–790 persons. The listing questionnaire collected  
97 demographic data on household members regardless of age. A household socioeconomic questionnaire was then  
98 administered to each household head. The household-level survey procedures were similar for both surveys. A  
99 central team based at the Center for Respiratory Diseases Research at the Kenyan Medical Research Institute  
100 (CRDR-KEMRI) provided coordination, monitoring, data management and analysis, and case management.

### 102 Mobile field site procedures

103 Eligible participants were invited to the mobile field site where questionnaires, including a symptom screen, and  
104 digital chest X-ray (posteroanterior) were performed. Chest X-ray images were independently evaluated on-site  
105 by two trained clinical officers using standardized WHO criteria as either “normal”, “abnormal suggestive of TB”,  
106 or “abnormal other”. Study participants who reported a cough of any duration (positive symptom screen) and/or  
107 had an abnormal chest X-ray suggestive of TB were eligible for sputum collection. In the 2015-16 survey only

108 participants who reported a cough duration of 2 or more weeks were considered positive on their symptom  
109 screen; in the present study we chose a cough of any duration to maximize sensitivity based on the accuracy of  
110 cough as a symptom screen for TB [12] while also collecting data on cough duration to allow comparisons  
111 between the two surveys. Like the 2015-16 survey, we collected sputum from participants who declined to  
112 undergo chest radiographs. Individuals with no radiological abnormalities suggestive of TB and who denied cough  
113 did not submit sputum samples.

### 115 Laboratory Procedures

116 Similar to the 2015-16 survey, we collected two sputum samples from sputum-eligible participants: a “spot”  
117 sputum collected at the time of the initial mobile field site visit and a morning sputum, collected by the participant  
118 at home on the following morning. These specimens were transported daily under cold chain for processing to  
119 CRDR-KEMRI and/or the National Tuberculosis Reference Laboratory (NTRL), both located in Nairobi. Laboratory  
120 processes were performed at the CRDR, NTRL, or the CDC/KEMRI lab in Kisian, Kenya. We performed direct  
121 sputum smears on all samples using Auramine O followed by fluorescence smear microscopy. GeneXpert  
122 MTB/RIF Ultra (Xpert Ultra, Cepheid, Sunnyvale, CA, USA) was performed on morning sputum samples or on spot  
123 samples when a morning sample was not available. Xpert Ultra results were recorded as cycle threshold (Ct)  
124 values for all probes and as a semi-quantitative grade (Negative, Trace, Very Low, Low, Medium, High). The lowest  
125 Ct value from any of the four rpoB probes was assigned as the minimum Ct value. For participants with Ultra trace  
126 positive results, which are generally positive only for the insertion sequence (IS) probe, we assigned a minimum  
127 Ct value of 35 which is near the upper limit of detection. Both spot and morning sputum specimens underwent  
128 AFB-culture with Mycobacteria Growth Indicator Tube (MGIT 960, Becton Dickinson, Franklin Lakes, NJ, USA using  
129 7ml tubes supplemented with BD BBL™ MGIT™ OADC and BD BBL™ MGIT™ PANTA, and were incubated in an  
130 automated BACTEC MGIT 960 machine for growth determination. Samples that had zero growth units at 42 days  
131 were confirmed negative. Broth cultures that were flagged as positive by the MGIT 960 were subjected to brain  
132 heart infusion (BHI) agar for sterility and Ziehl-Nielsen staining for the presence of Acid-Fast Bacilli (AFB). Once  
133 AFB presence was confirmed, the broth was then subjected to immunochromatographic assay (BD MGIT™ TBc

134 ID, Capillia test) for confirmation of *Mycobacterium tuberculosis* complex (MTBC). For isolates confirmed as  
135 MTBC, drug susceptibility testing was done using BD BBL™ MGIT™ SIRE kit and positive isolates were aliquoted  
136 for future reference.

137

138 Our use of Xpert Ultra differed from the 2015-16 prevalence survey, which used Xpert MTB/RIF, an earlier  
139 generation of the assay. To inform comparisons with the earlier survey, we conducted side-by-side testing of  
140 Xpert Ultra versus Xpert MTB/RIF in 40 samples selected randomly within semi-quantitative grade strata of Xpert  
141 Ultra results. Additionally, culture media differed between surveys as the 2015-16 survey used Lowenstein-  
142 Jensen (LJ) solid medium culture while we used MGIT liquid culture in 2022; the latter is a more sensitive culture  
143 medium [13].

144

#### 145 Survey TB case definition

146 We defined a participant as having prevalent pulmonary TB if the Xpert Ultra result was positive at a semi-  
147 quantitative grader higher than trace positive and/or at least one sputum culture was positive for *M. tuberculosis*.  
148 Different from Kenya Ministry of Health policies, we considered specimens that were Xpert Ultra trace positive  
149 and culture negative as negative for TB (i.e., false positive result). We based this definition on uncertainty around  
150 the interpretation of Xpert Ultra trace positive results which may be due to prior TB disease, transient infection,  
151 or true positive results among other causes [14-17]. The 2015-16 survey performed PCR-testing using the Xpert  
152 MTB/RIF assay, which does not have a trace positive grade, and defined pulmonary TB as any GeneXpert MTB/RIF  
153 positive result and/or one or more sputa cultures positive for *M. tuberculosis*. A sub-group of trace-positive  
154 participants were enrolled into a study of TB infectiousness [18] and had two additional sputa collected for MGIT  
155 culture, one of which underwent Xpert Ultra testing; we report these results. All participants diagnosed with  
156 culture-positive TB or with a positive Xpert Ultra test (including trace positive results) were linked to local health  
157 facilities for treatment initiation by the survey field coordinator and community health volunteers. The County  
158 TB coordinator was informed of all confirmed TB diagnoses and a documented laboratory result form with this  
159 information was delivered to the treatment health facility.

160

## 161 Data Collection and management

162 We collected data in the field using REDCap [19], a web-based application installed on tablet devices. HIV status  
163 and diabetes were based on self-report.

164

## 165 Data Analysis

166 The primary outcome was the prevalence of bacteriologically confirmed pulmonary TB expressed per 100,000  
167 population. Secondary outcome measures were pulmonary TB prevalence by age groups and sex, description of  
168 symptoms and radiological findings for pulmonary TB, and the health seeking behaviors of individuals with  
169 symptomatic pulmonary TB. Descriptive analyses were done using R software version 4.3.1. All tests were two  
170 sided and p-values  $\leq 0.05$  were considered significant. The random-effect logistic regression model recommended  
171 by the WHO [20] and adopted in the Kenya National TB Prevalence Survey [4] was applied. This model uses robust  
172 standard errors with missing value imputations and inverse probability weighting to correct for differentials in  
173 participation in the survey by age, sex, and cluster. This model accounts for clustering and variation in the number  
174 of individuals per cluster when estimating the point prevalence of pulmonary TB and 95% confidence intervals  
175 (CIs)[3]. We used Stata version 15 (StataCorp, College Station, TX) using the `mim` and `svy` commands with  
176 `pweights` specified to adjust for design effect. We analyzed data from the 2015 and 2022 prevalence surveys  
177 using the same code to generate prevalence estimates. A sensitivity analysis of individuals from the 2022 survey  
178 using a cough definition of at least two weeks was performed. To compare case notification rates with prevalence  
179 estimates, we calculated case notification rates (CNRs) for each age group from the routine TB data notified to  
180 National TB program. These were plotted alongside the prevalence estimates, including the confidence intervals.

181

## 182 Ethical Considerations

183 This study was approved by the Institutional Review Boards of KEMRI (KEMRI/SERU/3988) and the University of  
184 Washington (UW STUDY00009209). The risks and benefits of the study were explained to participants, and each



185 signed a written informed consent. For eligible participants below 18 years of age, we obtained guardian consent  
186 and participant assent.

187

## 188 Results

### 189 Enrollment

190 From May to December 2022, we conducted a household census in nine Nairobi geographic clusters. We identified  
191 9,459 residents among whom 1,799 were less than 15 years of age (Fig 2). Out of 7,644 persons eligible for enrollment,  
192 83% (n=6,369) enrolled. This enrollment proportion was lower than the 2015-16 survey, which had 89% (6,834/7,631)  
193 enrollment. Supplementary Table 1 shows the demographic characteristics for people who enrolled and did not enroll  
194 in the 2022 survey. The participation rate among men and women was 77% and 89%, respectively. The participation  
195 pattern across the age groups was similar for both men and women (S1 Fig).

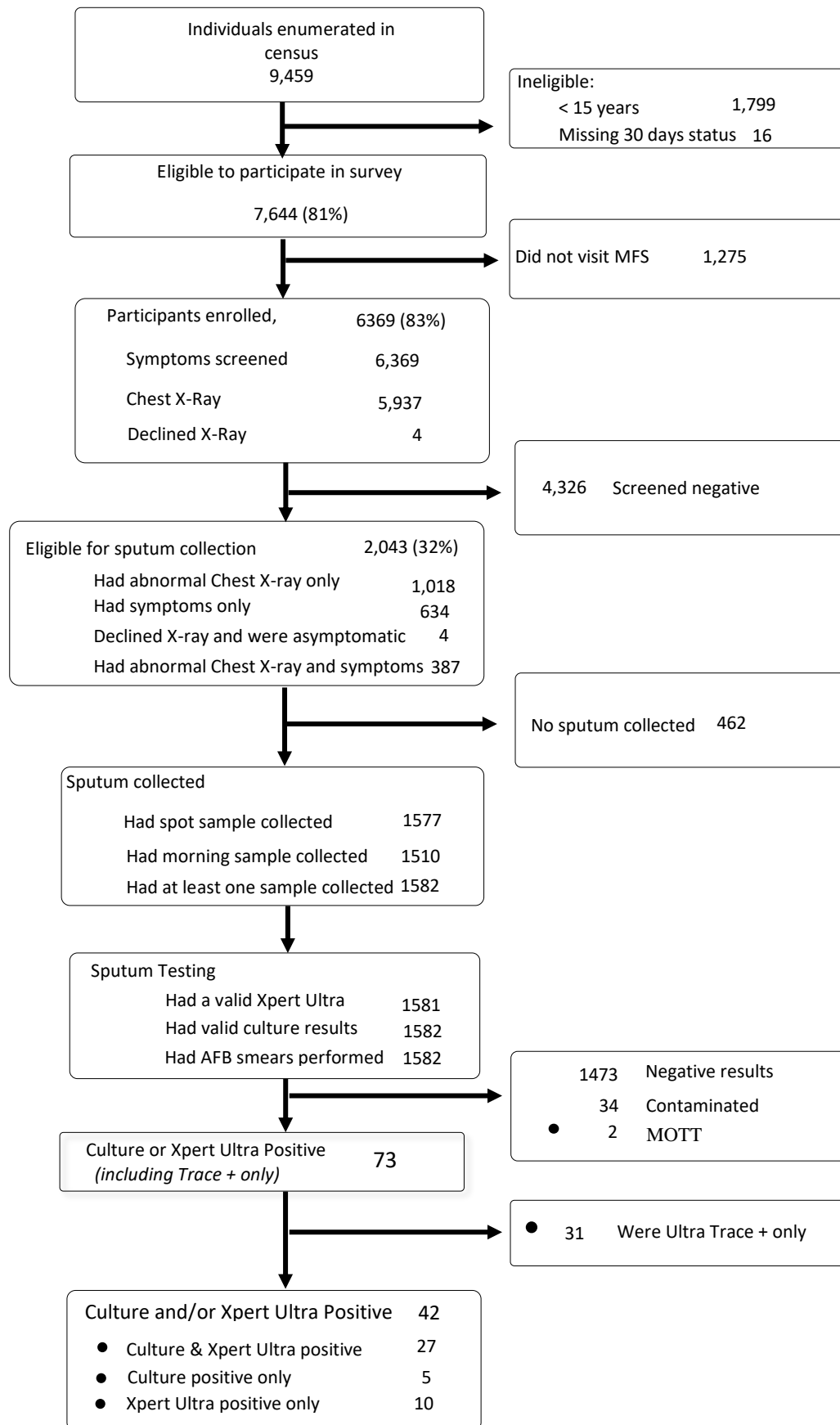
196

197 The median age of study participants in 2022 was 33 years (IQR 24-42) compared to 30 years (IQR 24-39) in 2015.  
198 Age groups skewed to older ages in 2022 compared to 2015 (p-value <0.001). (Table 1) Among enrollees in 2022, the  
199 proportion of women (66%) was greater than men (34%). While the proportion of women (59%) was also greater than  
200 men (41%) in the 2015-16 survey, women represented a significantly greater proportion in 2022 (p<0.001). Median  
201 household size and the number of participants living alone were 2 (IQR 2-4) and 23.9% in 2022, respectively. There  
202 were differences in occupations, marital status and education levels between the two surveys including an increase in  
203 reported unemployment from 14% of participants in 2015 to 21% in 2022.

204

205

206



207

208

**Fig 2. Schematic diagram of participant enrollment and screening in the 2022 prevalence survey**

209  
210  
211

**Table 1. Social and demographic characteristics of Nairobi prevalence survey participants in 2015 and 2022.**

| Characteristic                | 2015, N = 6,132 <sup>1</sup> | 2022, N = 6,369 <sup>2</sup> | p-value <sup>2</sup> |
|-------------------------------|------------------------------|------------------------------|----------------------|
| Age group                     |                              |                              | <0.001               |
| 15 - 24                       | 1,694 (28%)                  | 1,662 (26%)                  |                      |
| 25 - 34                       | 2,134 (35%)                  | 1,902 (30%)                  |                      |
| 35 - 44                       | 1,199 (20%)                  | 1,450 (23%)                  |                      |
| 45 - 54                       | 642 (10%)                    | 751 (12%)                    |                      |
| 55 - 64                       | 287 (4.7%)                   | 392 (6%)                     |                      |
| 65+                           | 176 (2.9%)                   | 212 (3%)                     |                      |
| Age                           | 30 (24 – 39)                 | 33 (24 – 42)                 |                      |
| Sex                           |                              |                              | <0.001               |
| Female                        | 3,622 (59%)                  | 4,182 (66%)                  |                      |
| Male                          | 2,510 (41%)                  | 2,187 (34%)                  |                      |
| Diabetes                      |                              | 328 (5%)                     |                      |
| PLHIV                         |                              |                              | 0.10                 |
| Positive                      | 186 (3%)                     | 137 (2.2%)                   |                      |
| Negative                      | 4,295 (63%)                  | 4,014 (63%)                  |                      |
| Did not disclose              | 2,353 (34%)                  | 2,218 (35%)                  |                      |
| Number of household members   |                              | 2 (2 – 4)                    |                      |
| Participant lives alone (%)   |                              | 1521 (24%)                   |                      |
| Occupation                    |                              |                              | <0.001               |
| Self-employed                 | 2,903 (47%)                  | 2774 (44%)                   |                      |
| Employed by government        | 170 (2.8%)                   | 84 (1%)                      |                      |
| Employed in private sector    | 886 (14%)                    | 613 (10%)                    |                      |
| Pupil/student                 | 543 (8.9%)                   | 586 (9%)                     |                      |
| Housewife                     | 646 (11%)                    | 880 (14%)                    |                      |
| Unemployed                    | 873 (14%)                    | 1,309 (21%)                  |                      |
| Other                         | 111 (1.8%)                   | 120 (2%)                     |                      |
| Unknown                       | 0                            | 3                            |                      |
| Marital Status                |                              |                              | <0.001               |
| Single (Never been married)   | 1,868 (30%)                  | 2,134 (34%)                  |                      |
| Married                       | 3,796 (62%)                  | 3,817 (60%)                  |                      |
| Divorced/Separated            | 307 (5.0%)                   | 262 (4%)                     |                      |
| Widowed                       | 161 (2.6%)                   | 155 (2%)                     |                      |
| Missing                       | 0                            | 1                            |                      |
| Level of Education            |                              |                              | <0.001               |
| No Schooling                  | 145 (2.4%)                   | 166 (3%)                     |                      |
| Primary School, Not Completed | 1,041 (17%)                  | 723 (11%)                    |                      |

| Characteristic                           | 2015, N = 6,132 <sup>1</sup> | 2022, N = 6,369 <sup>1</sup> | p-value <sup>2</sup> |
|--|------------------------------|------------------------------|----------------------|
| Completed Primary School                 | 1,480 (24%)                  | 1,223 (19%)                  |                      |
| Secondary School, Not Completed          | 937 (15%)                    | 1,266 (20%)                  |                      |
| Completed Secondary School               | 1,635 (27%)                  | 2,280 (36%)                  |                      |
| Further education after Secondary School | 894 (15%)                    | 710 (11%)                    |                      |
| Missing                                  | 0                            | 1                            |                      |

<sup>1</sup> Median (IQR) or Frequency (%)

<sup>2</sup> Pearson's Chi-squared test

We found that 63% of 2022 survey participants lived in the same location in 2015 (S2 Table). An additional 8% reported living in the same cluster as in 2015-2016 but had moved households. Thirteen percent of participants reported participating in the prior survey. Across clusters, migration was noted to be highest in cluster 2 with 79% of the participants indicating that they did not live in the same household in 2015. The nine surveyed clusters differed in several characteristics including sex distribution and the frequency of participants using tobacco and consuming alcohol. (S3 Table)

### Survey screening results

Based on a cough of any duration and/or abnormal chest X-ray consistent with TB, 2,043 participants were screen positive (32.1% of 6369 persons screened) and eligible to submit sputum samples in the 2022 survey. Among these participants, 1,018 (49.8%) were eligible by chest X-ray alone, 634 (31.0%) eligible based on the presence of a cough, and 387 (18.9%) eligible by both screening methods. An additional 4 study participants who did not receive a chest X-ray and did not have cough symptoms were eligible for sputum collection (Fig 1). Cough of any duration was reported by 1,021/6,369 (16%) participants and was the most frequently reported symptom, followed by chest pain (9.8%), and cough > 2 weeks (5.7%) (Table 2). Cough of any duration, fever, and chest pain were less frequent in the 2022 prevalence survey compared to 2015. The presence of cough of any duration was similar (p-value 0.07) for men (15%) and women (17%). Cough frequency was higher (p<0.001) among older age groups (22% for 45-54 years, 23% for 55-64 years, 25% for ≥ 65 years) than younger age groups (14% for 15-24 years, 13% 25-34 years, 16% for 35-44 years).

**Table 2. Comparison of symptoms characteristics of the study participants between 2015 and 2022 surveys**

| Characteristic        | 2015, N = 6132 <sup>1</sup> | 2022, N = 6,369 <sup>1</sup> | p-value <sup>2</sup> |
|-----------------------|-----------------------------|------------------------------|----------------------|
| Cough of any duration | 1,018 (17%)                 | 1,021 (16%)                  | 0.005                |
| Cough (>2weeks)       | 292 (4.8%)                  | 366 (6%)                     | 0.20                 |
| Missing               | 0                           | 1                            |                      |
| Chest pain            | 782 (13%)                   | 625 (10%)                    | <0.001               |
| Fever                 | 112 (1.8%)                  | 99 (2%)                      | 0.03                 |

|                            |             |             |        |
|----------------------------|-------------|-------------|--------|
| Night sweats               | 160 (2.6%)  | 140 (2%)    | 0.09   |
| Weight loss                | 31 (0.5%)   | 93 (2%)     | <0.001 |
| Shortness of breath        | 406 (6.6%)  | 239 (4%)    | <0.001 |
| Number of symptoms present |             |             | <0.001 |
| No symptoms                | 4,501 (73%) | 4,958 (78%) |        |
| Only 1 symptom             | 979 (16%)   | 839 (13%)   |        |
| Only 2 symptoms            | 403 (6.6%)  | 330 (5%)    |        |
| 3 or more symptoms         | 249 (4.1%)  | 242 (4%)    |        |

<sup>1</sup> Median (IQR) or Frequency (%)

<sup>2</sup> Pearson's Chi-squared test

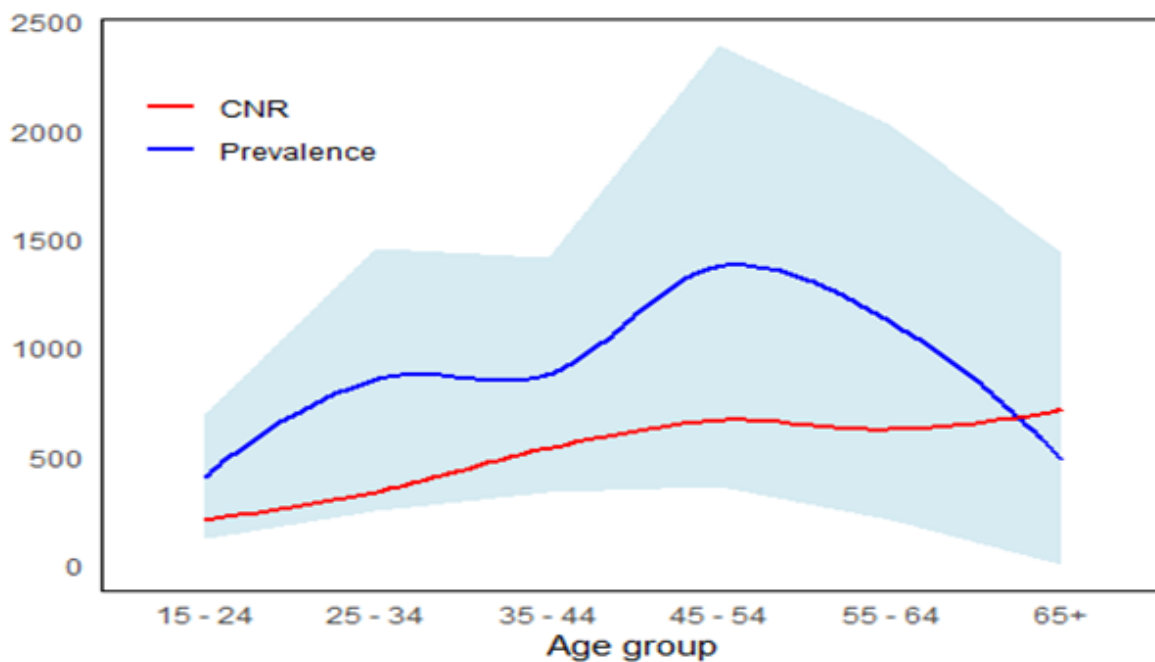
## TB Prevalence in 2022

Of the 2,043 participants eligible to submit sputum, 1,582 (77.4%) submitted at least one sputum sample. There were 42 (2.7%) persons who met the study definition of TB, among whom 27 were culture and Xpert Ultra positive, 5 were culture-positive only, and 10 were Xpert Ultra positive only (Fig 2). Twenty-seven of the participants with pulmonary TB had smear-positive sputum. There were 31 participants who were Xpert Ultra trace positive and culture-negative, representing 2.0% of all participants who submitted sputum; these persons did not meet the study definition of pulmonary TB. There was one participant who was taking TB treatment at the time of the survey. For comparison to 2015, we conducted an analysis of the 2022 data based on "restricted eligibility" that excluded participants whose only eligibility criterion to submit sputum was cough <2 weeks, resulting in a decrease of 3 persons with TB (n=39).

In the nine clusters in 2022, the crude TB prevalence was 659/100,000 (95% CI, 487/100,000 – 892/100,000) and the crude prevalence of smear-positive pulmonary TB was 294/100,000 (95% CI, 185/100,000 – 466/100,000). Crude prevalence point estimates were higher in seven of the nine clusters in 2022 relative to 2015 (S4 Table), although these differences were not significant. When the symptom screen was limited to cough  $\geq$ 2 weeks, 2022 crude TB prevalence was 612/100,000 (95% CI, 447/100,000 – 838/100,000) which, compared to the 2015 crude prevalence of 538/100,000 (95% CI, 383/100,000 – 756/100,000), was a non-significant increase in the point estimate of 14%.

In 2022, the weighted prevalence of TB was 806/100,000 (95% CI, 518/100,000 – 1096/100,000) (Table 3). There were 27 and 37 participants with smear-positive and Xpert Ultra positive TB in the 2022 survey, respectively. The estimated

257 weighted prevalence of smear-positive TB was 583/100,000 (95% CI, 301-866/100,000) and of Xpert Ultra positive TB  
258 was 602/100,000 (95% CI, 350-854/100,000). The weighted prevalence of all TB was higher (p-value = 0.03) among  
259 men (1394/100,000, 95% CI 802/100,000 – 1985/100,000) than among women (455/100,000, 95% CI 179/100,000 –  
260 730/100,000). Similar to findings from 2015 in the nine clusters, the age group weighted TB prevalence was highest  
261 for persons 45-54 years of age (Table 3) who had had the largest difference between estimated prevalence and case  
262 notification rates (Fig 3).



263

264 **Fig 3. Comparison of Nairobi TB case notification rate 2022 and estimated TB prevalence in 2022 by age group**

265

266 The weighted TB prevalence in 2022 based on restricted eligibility was 761/100,000 (95% CI 450/100,000 -  
267 1,073/100,000), compared to 567/100,000 (95% CI, 267/100,000-866/100,000) in 2015 (p=0.41). In stratified analyses,  
268 the point estimates of TB prevalence among men and among women were each 43% higher in 2022 than in 2015,  
269 though these differences did not achieve statistical significance (Table 3, Fig 4). Similarly, the point estimates of TB  
270 prevalence in each age group were higher in 2022 than in 2015.

271

272

273

274

275

276

277

**Table 3. Estimated weighted pulmonary TB prevalence in 2022 survey by cough duration and in 2015 survey**

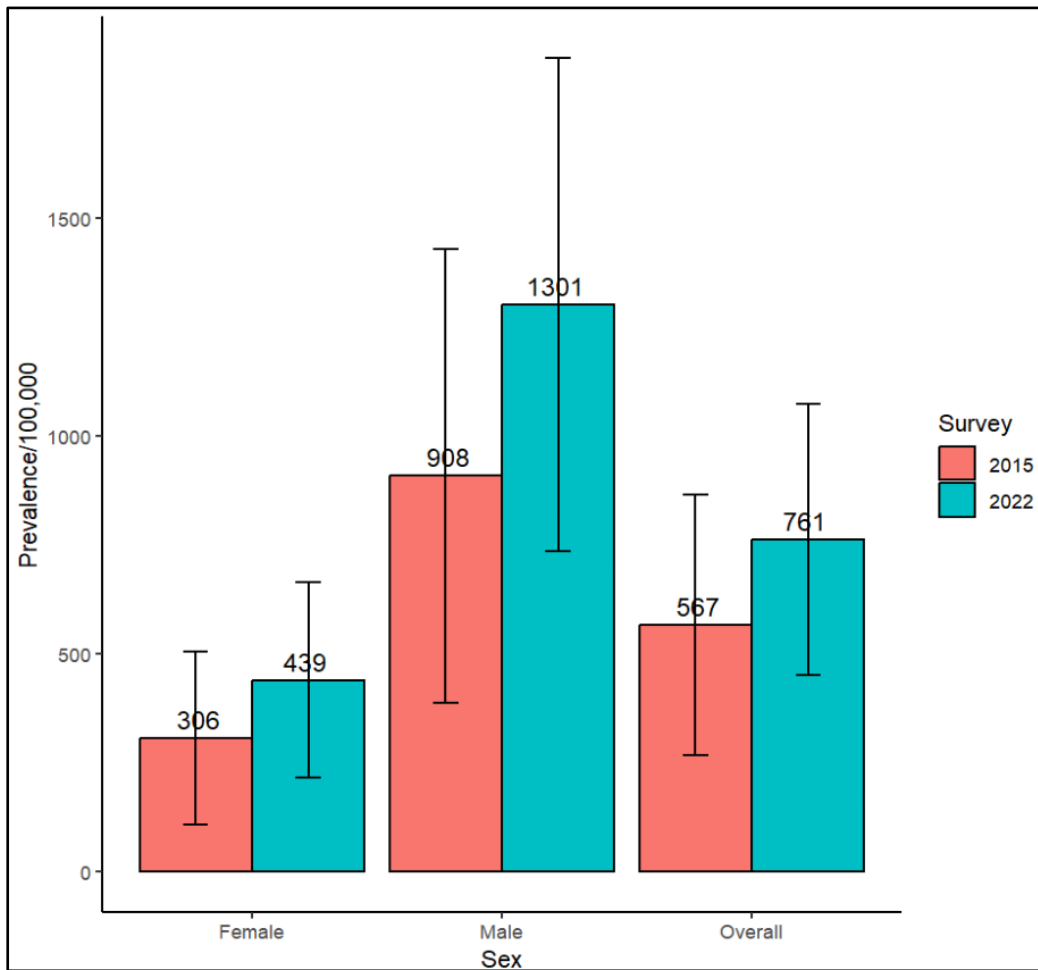
|  | <b>2022: cough any duration</b>                                  | <b>2015: cough &gt;2 weeks</b>                                   | <b>2022: cough &gt;2 weeks</b>                                 |   |
|--|--|--|--|---|
| <b>Robust standard errors with multiple imputation and inverse probability weighting</b> | <b>Bacteriologically Confirmed (N=42) Point estimate (95%CI)</b> | <b>Bacteriologically confirmed (N=33) Point estimate (95%CI)</b> | <b>Bacteriological Confirmed (N=39) Point estimate (95%CI)</b> | <b>P-value comparing 2022 restricted analysis to 2015</b> |
| <b>Overall 1</b>   | 806 (518, 1,096)   | 567 (267, 866)   | 761 (450, 1,073)   | <b>0·41</b>   |
| <b>Smear-positive TB 3</b>   | 583 (301, 866)   | 316 (116, 517)   | 557 (303, 811)   | 0·17  |
| <b>GeneXpert positive TB 3</b>   | 602 (350, 854)   | 491 (234, 747)   | 556 (309, 804)   | 0·70  |
| <b>Sex 2</b>   |  |  |  |   |
| Women  | 455 (179, 730)   | 306 (107, 505)   | 439 (215, 664)   | 0·34  |
| Men  | 1394 (802, 1,985)  | 908 (388, 1,429)   | 1301 (734, 1,868)  | <b>&lt;0·001</b>  |
| <b>Age 3</b>   |  |  |  |   |
| 15-24 years  | 407 (117, 697)   | 339 (142, 436)   | 449 (126, 773)   | 0·43  |
| 25-34 years  | 853 (251, 1,456)   | 597 (174, 1,021)   | 791 (311, 1,272)   | 0·18  |
| 35-44 years  | 875 (335, 1,414)   | 615 (229, 1,003)   | 814 (204, 1,425)   | <b>&lt;0·001</b>  |
| 45-54 years  | 1,375 (361, 2,390)   | 880 (75, 1,685)  | 1,164 (452, 1,875)   | <b>&lt;0·001</b>  |
| 55-64 years  | 1,115 (209, 2,021)   | 832 (127, 1,537)   | 1,102 (129, 2,074)   | 0·44  |
| 65 years and older   | 479 (0, 1,433)   | 437 (0, 1,443)   | 579 (0, 1,609)   | 0·27  |

Variables included in this model: Cough of any duration, night sweats, age group, sex, chest X-ray field reading, weight loss

278

279

280



281  
282 **Fig 4. Weighted TB prevalence by sex in 2015 and 2022 surveys.**

283  
284 **Participants with TB: characteristics, symptoms, CXR**

285 Forty-two participants met the survey definition of TB, including 27 (63%) men, 4 (11%) persons living with HIV, and 1  
286 (2.3%) with diabetes. In addition, 5 (12%) participants reported current smoking while 13 (29.4%) reported alcohol use  
287 (Table 4). Among participants with prevalent TB, 64% (n=27) denied cough of two or more weeks and 40% (n=17)  
288 denied cough of any duration (Table 4). Among participants with TB and cough, the median cough duration was 2  
289 weeks (IQR: 1-3). The WHO recommends a four symptom screen for pulmonary tuberculosis that is based on the  
290 presence of one or more of cough, fever, night sweats, or weight loss. Using the WHO screen, 62% (n = 26) of  
291 participants with TB would have screened positive.

292  
293 **Participants with Xpert Ultra trace positive results**

294 Notably, 31 participants had sputum that was Xpert Ultra trace positive and culture-negative; this represents 2.0% of  
295 participants who submitted sputum. There were no samples that were trace positive and culture-positive based on  
296 the prevalence survey protocol (Table 4). Among Xpert Ultra positive/culture-negative participants, cough of any  
297 duration was the most common symptom and present in 21/31 (62%), which was similar in frequency to participants  
298 who were diagnosed with prevalent TB, among whom 25/42 (58%) reported cough (Table 4). Aside from coughing, the



299 second most common symptom reported by the 2 groups was chest pain. A prior history of TB was reported by 7%  
300 (2/31) of participants with trace positive/culture-negative sputum. Seventeen of the 31 trace-positive/culture-  
301 negative participants were referred to a study in which they had two additional sputa collected for liquid-media based  
302 culture. Of these 17 participants, all re-tested as Xpert Ultra trace positive and four were culture positive on one of  
303 the additional sputum samples (24%).

304

305

**Table 4. Characteristics of participants with prevalent TB or Xpert Ultra Trace results**

| Characteristic         | Culture-positive,<br>Ultra negative<br>N = 5 | Culture-<br>positive, Ultra<br>Positive<br>N = 37 | Culture-negative,<br>Ultra Trace<br>positive, N = 31 | Overall, N =<br>73 | p-<br>value |
|------------------------|--|---|--|--------------------|-------------|
| Sex                    |  |   |  |                    | 0.3         |
| Male                   | 2 (40%)                                      | 25 (68%)  | 17 (55%)   | 44 (60%)           |             |
| Female                 | 3 (60%)                                      | 12 (32%)  | 14 (45%)   | 29 (40%)           |             |
| Age group              |  |   |  |                    | >0.9        |
| 15 -24                 | 1 (20%)                                      | 4 (11%)   | 5 (16%)  | 10 (14%)           |             |
| 25 - 34                | 2 (40%)                                      | 11 (30%)  | 9 (29%)  | 22 (30%)           |             |
| 35 - 44                | 2 (40%)                                      | 9 (24%)   | 8 (26%)  | 19 (26%)           |             |
| 45 - 54                | 0 (0%)                                       | 8 (22%)   | 5 (16%)  | 13 (18%)           |             |
| 55 - 64                | 0 (0%)                                       | 4 (11%)   | 3 (9.7%)   | 7 (9.6%)           |             |
| 65+                    | 0 (0%)                                       | 1 (2.7%)  | 1 (3.2%)   | 2 (2.7%)           |             |
| HIV status             |  |   |  |                    | 0.9         |
| Negative               | 4 (100%)                                     | 17 (85%)  | 15 (79%)   | 36 (84%)           |             |
| Positive               | 0 (0%)                                       | 3 (15%)   | 4 (21%)  | 7 (16%)            |             |
| Unknown                | 1  | 17  | 12   | 30                 |             |
| Diabetes               | 4 (80%)                                      | 36 (97%)  | 29 (94%)   | 69 (95%)           | 0.2         |
| Prior Hx of TB         | 0  | 1 (3%)  | 2 (7%)   | 3 (4%)             | >0.9        |
| Smoking                |  |   |  |                    | 0.3         |
| Never                  | 5 (100%)                                     | 32 (86%)  | 28 (90%)   | 65 (89%)           |             |
| Current smoker         | 0 (0%)                                       | 5 (14%)   | 1 (3.2%)   | 6 (8.2%)           |             |
| Former smoker          | 0 (0%)                                       | 0 (0%)  | 2 (6.5%)   | 2 (2.7%)           |             |
| Alcohol                |  |   |  |                    | 0.02        |
| Never                  | 3 (60%)                                      | 26 (70%)  | 31 (100%)  | 60 (82%)           |             |
| Once a month or less   | 0 (0%)                                       | 2 (5.4%)  | 0 (0%)   | 2 (2.7%)           |             |
| 2 to 4 times a month   | 1 (20%)                                      | 2 (5.4%)  | 0 (0%)   | 3 (4.1%)           |             |
| 2 to 3 times a week    | 1 (20%)                                      | 5 (14%)   | 0 (0%)   | 6 (8.2%)           |             |
| 4 or more times a week | 0 (0%)                                       | 2 (5.4%)  | 0 (0%)   | 2 (2.7%)           |             |

## Reported symptoms

|  |         |          |          |          |       |
|--|---------|----------|----------|----------|-------|
| Cough of any duration  | 4 (80%) | 21 (57%) | 21 (68%) | 46 (63%) | 0.6   |
| Cough > 2wks   | 1 (20%) | 14 (39%) | 8 (29%)  | 23 (33%) | 0.6   |
| Unknown  | 0       | 1        | 3        | 4        |       |
| Fever  | 0 (0%)  | 4 (11%)  | 2 (6.5%) | 6 (8.2%) | 0.8   |
| Weight loss  | 1 (20%) | 4 (11%)  | 1 (3.2%) | 6 (8.2%) | 0.2   |
| Night sweats   | 1 (20%) | 6 (16%)  | 2 (6.5%) | 9 (12%)  | 0.3   |
| Fatigue  | 2 (40%) | 8 (22%)  | 5 (16%)  | 15 (21%) | 0.4   |
| Shortness of breath  | 0 (0%)  | 6 (16%)  | 7 (23%)  | 13 (18%) | 0.6   |
| Chest pain   | 3 (60%) | 12 (32%) | 13 (42%) | 28 (38%) | 0.4   |
| One or more of WHO screening symptoms (cough/fever/weight loss/night sweats) | 4 (80%) | 22 (59%) | 21 (68%) | 47 (64%) | 0.6   |
| X-ray findings   |         |          |          |          | 0-007 |
| Normal   | 2 (40%) | 2 (5.6%) | 10 (33%) | 14 (20%) |       |
| Abnormal, suggestive of TB   | 3 (60%) | 34 (94%) | 20 (67%) | 57 (80%) |       |
| Unknown  | 0       | 1        | 1        | 2        |       |

<sup>1</sup> Median (IQR) or Frequency (%)

## Laboratory/Microbiologic Results

Rifampicin resistance was not detected by Xpert Ultra or phenotypic drug susceptibility testing (DST). DST identified 2 participants with isolates resistant to streptomycin and isoniazid and one isolate resistant to ethambutol. Among the 68 participants with Xpert Ultra results that were trace positive or higher, 31 (46%) were trace positive, 8 (12%) very low, 14 (21%) low, 6 (9%) medium, and 9 (13%) high semi-quantitative grade. An increasing percentage of samples were culture positive with increasing Xpert Ultra grade; those with “very low” positivity had 25% culture positivity as compared to 100% culture positivity in those with “high” positivity on Xpert Ultra (S5 Table).

## Xpert Ultra compared to GeneXpert MTB/RIF

In comparative analyses of Xpert Ultra and GeneXpert MTB/RIF, 40 samples were selected. Of the 13 samples that were trace positive by Xpert Ultra testing, only 1 was positive on GeneXpert MTB/RIF (S6 Table). Fourteen (82%) of the 17 Xpert Ultra participants with positive results > trace were also test positive by GeneXpert MTB/RIF; thus, Xpert Ultra detected 3 additional persons with tuberculosis. Two of these participants had semi-quantitative grades of very low on Xpert Ultra, and one was low. All the negative Xpert Ultra participants were also negative on GeneXpert MTB/RIF with valid results. On further comparison of Xpert Ultra and GeneXpert MTB/RIF classification of positivity by cycle threshold, GeneXpert classes correlated well.

## 324 Discussion

325 In a population-based study of pulmonary TB prevalence in nine geographic clusters in Nairobi County, Kenya, we  
326 found that the estimated prevalence of TB remained high from 2015 to 2022. Despite programmatic interventions  
327 after the 2015 survey, there was no evidence of a decline in TB overall, by sex, or in age subgroups, a finding that  
328 differs from other serial surveys in high TB burden settings during similar time periods. We also found that men  
329 and 45-54 year old participants belonged to groups with higher risk for TB in these geographic clusters in both  
330 2015 and 2022. This suggests that in Nairobi County, local drivers of the TB epidemic are stable and may be used  
331 to develop targeted TB control interventions. Without specific interventions, it is likely that TB burden will remain  
332 high.

333  
334 After 2015 TB prevalence survey results revealed that 40% of people with prevalent TB had not been previously  
335 diagnosed [3], Kenya initiated public health interventions that are on-going to close the gap in TB case detection.  
336 This included greater access at government clinics to GeneXpert and other WHO recommended rapid diagnostic  
337 tests as first-line TB diagnostics, increased use of digital X-ray for screening with CAD interpretation, strengthened  
338 processes for community referrals of persons presumed to have TB to government clinics, more efficient contact  
339 investigations, and programmatic support for quality improvement at the health facility level. While there were  
340 challenges in implementing these initiatives, such as erratic availability of Xpert cartridges, the estimated frequency  
341 of undetected TB reduced to 32% in 2022 [21]. Concerningly, we found that the prevalence of TB in re-sampled  
342 Nairobi clusters remained unchanged from 2015 to 2022, with higher point estimates overall and in seven of  
343 nine sampled clusters; in addition, only one participant with TB was on treatment at the time of our survey.

344  
345 In comparing our results from 2022 and 2015, it is important to note that the TB detection methods used in  
346 2022 were more sensitive than those used in 2015. Liquid broth-based culture is estimated to be approximately  
347 16% more sensitive than culture on solid media [13], and a meta-analysis of studies that directly compared  
348 GeneXpert assays found that, compared to culture, the sensitivity of Xpert Ultra and Xpert MTB/RIF were 90.9%  
349 and 84.7%, respectively, a difference of 6.3% [16]. In a limited head-to-head comparison, we also found that  
350 Xpert Ultra detected more people with TB than Xpert MTB/RIF. Beyond differences in testing, additional factors  
351 likely contributed to the persistently high TB burden in 2022. There were health services disruptions in the two  
352 years immediately preceding the 2022 survey, including a COVID-19 related decrease in TB case notifications  
353 and a Kenyan healthcare worker strike in December 2020 – January 2021 [22]. While TB case notifications  
354 subsequently increased [1], disruptions in TB diagnosis and treatment associated with these events likely  
355 contributed to the persistently high TB prevalence observed in 2022. Similar COVID-19 related disruptions on  
356 public health services and their impact on TB control were observed globally in diverse settings including TB  
357 endemic and non-endemic nations. We also observed a significant increase in participants who were

358 unemployed in 2022 compared to 2015, which may predispose to economic deprivation and higher TB risk. In  
359 other settings, economic growth has been associated with declines in TB prevalence between sequential  
360 surveys [23]. This change in employment may have been due to COVID-19-related effects.

361

362 The lack of decline in TB prevalence over a seven-year span differs from other studies conducted in high burden  
363 settings where prevalence rates decreased over time [7, 24, 25]. In Kampala, Uganda, two community active case-  
364 finding campaigns that were conducted 2 years apart, the first of which occurred in 2019 prior to the pandemic,  
365 found that TB prevalence decreased 45%. While the Ugandan surveys straddled the pandemic, similar to our  
366 study, there were several key differences from our study including shorter survey intervals, sputum collection  
367 from all participants regardless of symptoms, and a community mobilization component. In addition, individual  
368 participation in both the Ugandan surveys was higher (33%–37%) than in our Nairobi survey (13%). These  
369 differences raise questions around the most effective time intervals for active case-finding, the durability of  
370 reductions in TB prevalence, and the importance of identifying persons with sub-clinical TB and unremarkable  
371 chest x-rays.

372

373 There remains a high burden of undiagnosed TB in Nairobi and cost-effective active case-finding strategies are  
374 needed. Among survey participants diagnosed with bacteriologically confirmed TB, 40% did not report a cough  
375 and 38% denied all of the WHO screening symptoms. In our study, chest x-ray demonstrated higher sensitivity as  
376 88% of participants with confirmed TB had an abnormal chest X-ray suggestive of TB. This finding, in agreement  
377 with results from other prevalence surveys [3, 26], emphasizes the importance of chest imaging for detecting  
378 persons with prevalent TB in the community [27, 28].

379

380 Development of cost-effective TB case-finding strategies will need to account for behavioral patterns and local  
381 variations in epidemiology. Through door-to-door enrollment, our 2022 TB prevalence survey enrolled twice as  
382 many women as men, similar frequencies to other surveys [10], yet weighted TB prevalence was three times  
383 higher among men than women, again similar to other surveys [24, 29]. This suggests that active case-finding  
384 approaches will need to identify strategies to increase inclusion of men such as enrollment through non-  
385 household locales or performing screening outside of business hours. Further studies of activity spaces and TB  
386 risk may help to inform this work. By age group, we verified 2015 findings that older age groups, especially 45-54  
387 years, in Nairobi clusters have the highest TB prevalence which differs from aggregated country-wide data in  
388 Kenya (highest prevalence among 25-34 year-olds), and national data from 11 other African nations [10]. Stability  
389 of this risk factor among Nairobi clusters supports the development of interventions specific to Nairobi clusters.  
390 Intentionally performing active case-finding among 45-64 year-old men in Nairobi County is one strategy to  
391 maximize the detection of TB.

392

393 Based on our study definition of TB, sensitivity of Xpert Ultra performed on a single sputum sample (88%) was no  
394 different than that of MGIT culture performed on two specimens (76%). Relying solely on Xpert Ultra in our study  
395 would have missed 5 of the 42 persons (12%) with confirmed with TB. The sensitivity of a single Xpert Ultra test  
396 to that of a single MGIT culture is similar [30], and it has been suggested that primary use of Xpert Ultra with  
397 culture for confirmatory testing in prevalence surveys may be a cost-effective approach [17]. We observed that  
398 Ultra trace-positive/culture-negative results were identified in 2% of participants who submitted sputum. Other  
399 community-based surveys found that of participants who submitted sputum, 0.4% to 2% had Xpert Ultra trace  
400 positive results and that 14% to 43% of the trace positive samples were positive using one to two specimens for  
401 culture [14, 30, 31]. Different from these findings, under our study protocol we did not detect any culture positive  
402 samples from participants with Xpert Ultra trace-positive results (n=31). Seventeen of these 31 participants  
403 enrolled in a study of TB infectiousness [18] and provided spot and morning sputum samples: all were trace  
404 positive on Xpert Ultra retesting and four (24%) were culture positive on one of two specimens. Based on these  
405 findings we suggest that trace positive results be investigated with high quality sputum collection that is  
406 submitted for culture, and that multiple sputa submitted for culture is important in confirming culture status.  
407 Most persons with trace positive Xpert Ultra sputum who are tested through active case-finding will be culture  
408 negative with an unknown role for TB treatment.

409

410 There are a number of limitations in our study. While the 2015 survey was powered to sample clusters across  
411 Kenya in order to provide an estimate of country-wide prevalence, our 2022 survey targeted only clusters located  
412 within Nairobi County. Our findings pertain to geographic clusters that are relatively stable in terms of residency  
413 as 63% of participants reported living in the same cluster in 2015. Our study enrolled participants in the wake of  
414 the COVID pandemic and it is unclear how this impacted TB prevalence in the surveyed clusters.

415

416 The Nairobi 2022 prevalence survey presents a major strength by returning to previously sampled areas to  
417 examine the evolution of TB prevalence over time. As a repeat survey of TB prevalence it allows for assessing  
418 trends in TB prevalence within a time interval of at least five years for Nairobi County. Comparing TB prevalence  
419 across time allows public health authorities to examine the trend in burden, evaluate the impact of TB control  
420 activities between surveys, and create policies to direct future actions. Another unique aspect of this survey was  
421 that it was conducted in the backdrop of the COVID-19 pandemic and aimed to provide useful insights on TB care  
422 in the setting of a pandemic. This information would be crucial for programmatic management.

423

## Acknowledgements

We acknowledge the study field team that collected the study data, the Kenya National TB Program and the Nairobi county health management team for facilitating the conduction of this study

## References

1. World Health Organization. Global tuberculosis report 2023. Geneva: World Health Organization; 2023. Licence: CC BY-NC-SA 3.0 IGO.
2. Pai M, Dewan PK, Swaminathan S. Transforming tuberculosis diagnosis. *Nat Microbiol*. 2023;8(5):756-9.
3. Enos M, Sitienei J, Ong'ang'o J, Mungai B, Kamene M, Wambugu J, et al. Kenya tuberculosis prevalence survey 2016: Challenges and opportunities of ending TB in Kenya. *PLoS ONE*. 2018;13(12):e0209098.
4. NTLD. Kenya tuberculosis prevalence survey 2016. Nairobi, Kenya: National Tuberculosis, Leprosy and Lung Disease Program, 2018. Accessed at: <https://nltp.co.ke/wp-content/uploads/2020/10/Kenya-TB-Prevalence-Survey-Report-March-2018.pdf>.
5. World Health Organization. Tuberculosis prevalence surveys: a handbook. Geneva: World Health Organization; 2011.
6. Frascella B, Richards AS, Sossen B, Emery JC, Odone A, Law I, et al. Subclinical Tuberculosis Disease-A Review and Analysis of Prevalence Surveys to Inform Definitions, Burden, Associations, and Screening Methodology. *Clin Infect Dis*. 2021;73(3):e830-e41.
7. Nguyen HV, Nguyen HB, Nguyen NV, Cobelens F, Finlay A, Dao CH, et al. Decline of Tuberculosis Burden in Vietnam Measured by Consecutive National Surveys, 2007-2017. *Emerg Infect Dis*. 2021;27(3):872-9.
8. Aung ST, Nyunt WW, Moe MM, Aung HL, Lwin T. The fourth national tuberculosis prevalence survey in Myanmar. *PLOS Glob Public Health*. 2022;2(6):e0000588.
9. Lansang MAD, Alejandria MM, Law I, Juban NR, Amarillo MLE, Sison OT, et al. High TB burden and low notification rates in the Philippines: The 2016 national TB prevalence survey. *PLoS ONE*. 2021;16(6):e0252240.
10. Law I, Floyd K, African TBPSG. National tuberculosis prevalence surveys in Africa, 2008-2016: an overview of results and lessons learned. *Trop Med Int Health*. 2020;25(11):1308-27.
11. National Tuberculosis, Leprosy and Lung Disease Program Annual Report, 2021; Ministry of Health, Kenya.
12. Van't Hoog A, Viney K, Biermann O, Yang B, Leeflang MM, Langendam MW. Symptom- and chest-radiography screening for active pulmonary tuberculosis in HIV-negative adults and adults with unknown HIV status. *Cochrane Database Syst Rev*. 2022;3(3):CD010890.
13. Cruciani M, Scarparo C, Malena M, Bosco O, Serpelloni G, Mengoli C. Meta-analysis of BACTEC MGIT 960 and BACTEC 460 TB, with or without solid media, for detection of mycobacteria. *J Clin Microbiol*. 2004;42(5):2321-5.
14. Moyo S, Ismail F, Van der Walt M, Ismail N, Mkhondo N, Dlamini S, et al. Prevalence of bacteriologically confirmed pulmonary tuberculosis in South Africa, 2017-19: a multistage, cluster-based, cross-sectional survey. *Lancet Infect Dis*. 2022;22(8):1172-80.
15. Sung J, Nantale M, Nalutaaya A, Biche P, Mukiibi J, Kamoga CE, et al. Evidence for tuberculosis in individuals with Xpert Ultra "trace" sputum during screening of high-burden communities. *Clin Infect Dis*. 2023.
16. Zifodya JS, Kreniske JS, Schiller I, Kohli M, Dendukuri N, Schumacher SG, et al. Xpert Ultra versus Xpert MTB/RIF for pulmonary tuberculosis and rifampicin resistance in adults with presumptive pulmonary tuberculosis. *Cochrane Database Syst Rev*. 2021;2:CD009593.
17. Floyd S, Klinkenberg E, de Haas P, Kosloff B, Gachie T, Dodd PJ, et al. Optimising Xpert-Ultra and culture testing to reliably measure tuberculosis prevalence in the community: findings from surveys in Zambia and South Africa. *BMJ Open*. 2022;12(6):e058195.
18. Nduba V, Njagi L, Murithi W, Mwongera Z, Byers J, Logioia G, et al. Mycobacterium tuberculosis Cough Aerosol Culture Status Associates with Host Characteristics and Inflammatory Profiles. *Nat Comms*. 2024.
19. Harris PA, Taylor R, Thielke R, Payne J, Gonzalez N, Conde JG. Research electronic data capture (REDCap)--a metadata-driven methodology and workflow process for providing translational research informatics support. *J Biomed Inform*. 2009;42(2):377-81.

- 472 20. World Health Organization. Assessing tuberculosis under-reporting through inventory studies. WHO Press.  
473 2012. [https://www.who.int/tb/publications/inventory\\_studies/en/](https://www.who.int/tb/publications/inventory_studies/en/).
- 474 21. National Tuberculosis, Leprosy and Lung Disease Program Annual Report, 2022; Ministry of Health, Kenya.
- 475 22. Kiarie H, Temmerman M, Nyamai M, Liku N, Thuo W, Oramisi V, et al. The COVID-19 pandemic and  
476 disruptions to essential health services in Kenya: a retrospective time-series analysis. *Lancet Glob Health*.  
477 2022;10(9):e1257-e67.
- 478 23. Foster N, Nguyen HV, Nguyen NV, Nguyen HB, Tiemersma EW, Cobelens FGJ, et al. Social determinants of  
479 the changing tuberculosis prevalence in Viet Nam: Analysis of population-level cross-sectional studies. *PLoS Med*.  
480 2022;19(3):e1003935.
- 481 24. Feasey HRA, Khundi M, Nzawa Soko R, Nightingale E, Burke RM, Henrion MYR, et al. Prevalence of  
482 bacteriologically-confirmed pulmonary tuberculosis in urban Blantyre, Malawi 2019-20: Substantial decline  
483 compared to 2013-14 national survey. *PLOS Glob Public Health*. 2023;3(10):e0001911.
- 484 25. Kendall EA, Kitonsa PJ, Nalutaaya A, Robsky KO, Erisa KC, Mukiibi J, et al. Decline in prevalence of  
485 tuberculosis following an intensive case finding campaign and the COVID-19 pandemic in an urban Ugandan  
486 community. *Thorax*. 2024;79(4):325-31.
- 487 26. Nguyen HV, Tiemersma EW, Nguyen HB, Cobelens FGJ, Finlay A, Glaziou P, et al. The second national  
488 tuberculosis prevalence survey in Vietnam. *PLoS ONE*. 2020;15(4):e0232142.
- 489 27. Ho J, Fox GJ, Marais BJ. Passive case finding for tuberculosis is not enough. *Int J Mycobacteriol*.  
490 2016;5(4):374-8.
- 491 28. Kuznetsov VN, Grjibovski AM, Mariandyshev AO, Johansson E, Bjune GA. A comparison between passive and  
492 active case finding in TB control in the Arkhangelsk region. *Int J Circumpolar Health*. 2014;73:23515.
- 493 29. Horton KC, MacPherson P, Houben RM, White RG, Corbett EL. Sex Differences in Tuberculosis Burden and  
494 Notifications in Low- and Middle-Income Countries: A Systematic Review and Meta-analysis. *PLoS Med*.  
495 2016;13(9):e1002119.
- 496 30. Xie YL, Eichberg C, Hapeela N, Nakabugo E, Anyango I, Arora K, et al. Xpert MTB/RIF Ultra versus  
497 mycobacterial growth indicator tube liquid culture for detection of *Mycobacterium tuberculosis* in symptomatic  
498 adults: a diagnostic accuracy study. *Lancet Microbe*. 2024;5(6):e520-e8.
- 499 31. Sung J, Nantale M, Nalutaaya A, Biche P, Mukiibi J, Kamoga CE, et al. Evidence for Tuberculosis in Individuals  
500 With Xpert Ultra "Trace" Sputum During Screening of High-Burden Communities. *Clin Infect Dis*. 2024;78(3):723-9.
- 501
- 502
- 503
- 504
- 505
- 506
- 507
- 508
- 509