

1 **Title:** Donor-Specific Antibody Testing is an Effective Surveillance Strategy for High-
2 Risk Antibody Mediated Rejection in Heart Transplant Patients in the Contemporary Era
3

4 **Authors:** Vincenzo Cusi,¹ Ashley Cardenas,² Yuko Tada,¹ Florin Vaida,³ Nicholas
5 Wettersten,⁴ Jennifer Chak,¹ Victor Pretorius,⁵ Marcus Anthony Urey,¹ Gerald P.
6 Morris,² Grace Lin,² Paul J. Kim¹
7

8 **ORCID IDs:** Vincenzo Cusi, BS: 0000-0001-9681-6896; Ashley Cardenas, MD: 0009-
9 0007-9012-1445; Yuko Tada, MD, PhD: 0000-0003-1410-9894; Florin Vaida, PhD:
10 0000-0002-2256-4611; Nicholas Wettersten, MD: 0000-0002-6122-1152; Jennifer Chak:
11 0009-0005-5828-1049; Victor Pretorius, MBChB: 0000-0001-6360-4002; Marcus
12 Anthony Urey, MD: 0000-0001-8311-5003; Gerald P. Morris, MD, PhD: 0000-0002-
13 1097-4453; Grace Lin, MD, PhD: 0000-0001-8018-5604; Paul J. Kim, MD, MAS: 0000-
14 0002-1755-6182
15

16 **Affiliations:** 1. UC San Diego Health, San Diego, CA. 2. Department of Pathology,
17 University of California, San Diego, California, USA 3. Department of Family Medicine
18 and Public Health, UC San Diego, La Jolla, CA. 4. Cardiology Section, Veterans Affairs
19 San Diego Healthcare System, San Diego, CA. 5. Division of Cardiovascular and
20 Thoracic Surgery, Department of Surgery, University of California, San Diego,
21 California, USA
22

23 **Total word count:** 2,919
24

25 **Author contributions:**

26 VC: writing, review and editing, data curation, project administration; AC:
27 conceptualization, writing, data curation; YT: writing, review and editing, data curation,
28 adjudication of clinical outcomes; FV: writing, reviewing, editing, and statistical
29 analyses; NW: writing, review and editing, data curation, adjudication of clinical
30 outcomes; JC: writing, review and editing, data curation; PB: writing, review and editing,
31 data curation; VP: writing, review and editing; MAU: writing, review and editing; GPM:
32 writing, review, and editing, project administration; GL: conceptualization, writing, review
33 and editing, project administration; PJK: conceptualization, writing, review and editing,
34 data curation, adjudication of clinical outcomes, project administration.
35

1 **Address for Correspondence:**
2
3 Paul J. Kim, MD
4 Division of Cardiovascular Medicine
5 Department of Medicine
6 UC San Diego Health
7
8 E-mail: [pjk017 at health dot ucsd dot edu](mailto:pjk017@health.ucsd.edu)

1 **Non-standard Abbreviations and Acronyms**

2

3 ACR, Acute cellular rejection

4 CAV, Cardiac allograft vasculopathy

5 DCD, Donation after circulatory death

6 dnDSA, *de novo* donor-specific antibody

7 DSA, Donor-specific antibody

8 EMB, Endomyocardial biopsy

9 HLA, Human leukocyte antigen

10 HTx, Heart transplantation

11 ISHLT, International Society for Heart and Lung Transplantation

12 MFI, Mean fluorescence intensity

13 pAMR, Pathologic antibody mediated rejection

14 PGD, Primary graft dysfunction

15 UCSD, University of California, San Diego Health

- 1 **Key words:** antibody mediated rejection; de novo donor specific antibodies; heart
- 2 transplantation; cardiac allograft dysfunction; HLA antibody; primary graft dysfunction

1 **Abstract:**

2

3 Word count: 236 words

4

5 **Background:**

6

7 Pathologic antibody mediated rejection (pAMR) evaluation and donor specific antibody
8 (DSA) testing are recommended in the first year after heart transplantation (HTx) in
9 adult patients. Whether DSA testing adds prognostic information to contemporary pAMR
10 surveillance has not been fully studied.

11

12 **Methods:**

13

14 This was a single center study of consecutive endomyocardial biopsies (EMB)
15 performed between November 2010 and February 2023 in adult HTx patients. The
16 primary objective was to evaluate whether DSA testing contributes additional
17 information to pAMR surveillance to better predict overall survival. Secondary endpoints
18 included cardiac allograft dysfunction and loss.

19

20 **Results:**

21

22 A total of 6,033 EMBs from 544 HTx patients were reviewed for the study. The
23 pAMR+/DSA+ group had significantly lower overall survival versus the pAMR-/DSA-
24 group (hazard ratio [HR] = 2.63; 95% confidence interval [CI], 1.35-5.11; $p_c = 0.013$). In

1 the pAMR+/DSA+ group, patients with cardiac allograft dysfunction, compared to those
2 without allograft dysfunction, had significantly lower overall and cardiac survival ($p_c <$
3 0.001 for both). In contrast, pAMR+/DSA+ and pAMR-/DSA- patients without cardiac
4 allograft dysfunction showed no difference in overall and cardiac survival. Primary graft
5 dysfunction (PGD) was a novel risk factor for development of *de novo* DSAs (dnDSA)
6 three weeks post-HTx ($p = 0.007$).

7

8 **Conclusions:**

9

10 DSA testing as the primary surveillance method can identify high-risk pAMR+/DSA+
11 patients. Surveillance pAMR testing in the contemporary era may need to be
12 reevaluated. Earlier DSA testing at 10-14 days post-HTx should be considered in PGD
13 patients.

1 **Introduction**

2
3 Recognition and standardization for the diagnosis of pAMR occurred in 2013 by the
4 International Society for Heart and Lung Transplantation (ISHLT) working group, where
5 surveillance for pAMR in adult HTx patients was first recommended.¹ With the goal of
6 making pAMR a pathologic diagnosis, akin to acute cellular rejection (ACR),² the ISHLT
7 working group also removed the presence of DSA and cardiac allograft dysfunction for
8 pAMR diagnosis. These pivotal changes were also made to address the concern for
9 underdetection of asymptomatic pAMR.

10
11 While DSA testing continues to be recommended with pAMR surveillance in the first
12 year after HTx,³ how both results should influence management of HTx patients
13 remains unclear.⁴ In this single-center study, we aimed to evaluate whether DSA testing
14 provides additional information to pAMR surveillance to predict overall survival in HTx
15 patients. In addition, because HTx population demographics and HTx management
16 have significantly changed over time,⁵ we performed a comprehensive analysis to
17 identify potential predictors for dnDSAs, pAMR, cardiac allograft dysfunction, CAV,
18 cardiac and overall survival in patients with pAMR and DSA testing for the
19 contemporary era (2010-current).

1 **Methods**

2

3 **Data Sharing**

4

5 The data that support the findings of this study are openly available in Mendeley Data at
6 [10.17632/d4f7g8hs5z.1](https://doi.org/10.17632/d4f7g8hs5z.1).

7

8 **Study Design**

9

10 Consecutive patients who were 18 years of age or older and underwent HTx between
11 November 2010 to February 2023 were retrospectively reviewed. Patients without prior
12 pAMR and DSA results available were excluded. Database lock occurred March 2024,
13 one year after the inclusion of the final patient. The typical EMB surveillance protocol⁶ at
14 the University of California, San Diego Health (UCSD) includes C4d
15 immunofluorescence at 10-14 days post-HTx and subsequently as recommended
16 frequency by the ISHLT.¹ DSA testing is also performed at the same time intervals.³ VC,
17 AC, PB, and JC collected patient data and clinical outcomes from the electronic medical
18 record. Approval for this study was provided by the UCSD Office of IRB Administration
19 (IRB #805675). This study adheres to the principles of the Declaration of Helsinki
20 formulated by the World Medical Association, the Declaration of Istanbul, and the
21 International Society for Heart and Lung Transplantation statement on Transplant
22 Ethics.

23

1 **Pathologic Tissue Exams and Anti-Human Leukocyte Antigen (HLA) Antibody**

2 **Testing**

3
4 C4d immunofluorescence was performed starting November 2010 with positivity defined
5 according to the ISHLT Working Formulation; however, contemporary ISHLT pAMR
6 grading was implemented at UCSD in July 2015.¹ Thus, EMB samples prior to July
7 2015 were regraded using the current pAMR grading scheme for this study (GL). Anti-
8 HLA testing is performed using single-antigen bead LABScreen HLA Class I and II
9 assays (One Lambda, Canoga Park, CA) on LabScan 100 and FlexMap 3D (Luminex,
10 Austin, TX) instruments. Data is analyzed using HLA Fusion software (One Lambda).
11 Antibodies with normalized mean fluorescence intensity (MFI) values > 3,000 are
12 identified as positive, based upon likelihood of causing a positive flow cytometric
13 crossmatch.⁷ DSA are identified by comparison of antibody testing results to donor HLA
14 typing. Concurrent DSA positivity was defined as occurring within a month of a pAMR
15 diagnosis.

16

17 **Clinical Outcomes and Variables**

18

19 The primary outcome was all-cause death or cardiac retransplant. Cause of death was
20 also adjudicated by three experienced cardiologists (NW, YT, PJK).⁶ Secondary
21 outcomes evaluated were: cardiac allograft failure, future episodes of pAMR or dnDSA
22 detection, concurrent or future cardiac allograft dysfunction (echocardiogram
23 demonstrating left ventricular ejection fraction < 50%)⁸ occurring after one week post-

1 HTx, and ISHLT cardiac allograft vasculopathy (CAV) grade 2 or greater⁹. PGD
2 diagnosis was based on documentation by the HTx clinical team or need of
3 extracorporeal membrane oxygenation and/or percutaneous mechanical circulatory
4 support after HTx.¹⁰ Documentation by a clinical team member of immunosuppressive
5 medication nonadherence after HTx was recorded retrospectively by medical chart
6 review and independent of the study (VC, AC, PB, JC).¹¹⁻¹³

7

8 **Statistical Analysis**

9

10 Demographic and clinical variables were analyzed with standard statistics as previously
11 described for continuous and count variables.⁶ The association of pAMR/DSA groups
12 with time to event outcomes was evaluated using single predictor and multipredictor
13 Cox proportional hazards models. The multipredictor models for overall and cardiac
14 survival were adjusted for recipient age, sex, and race/ethnicity. Additional exploratory
15 analyses investigated factors associated with time to event outcomes using Cox models
16 applying a forward model selection procedure with p-value ≤ 0.15 threshold for
17 inclusion. Cox models with time-dependent covariates were used when the proportional
18 hazards assumption of constant hazard ratios was violated. To adjust for different
19 causes of death as competing outcomes, a competing-risk regression model was
20 constructed using the Fine and Gray method. We implemented bootstrapping, repeated
21 10,000 times, to generate approximate sampling distributions for the statistics of
22 interest. The mean and 95% CI for each statistic were taken from the bootstrap
23 sampling distribution.

1
2 Analysis was conducted in R (R Core Team, 2022). We used the Bonferroni-Holm
3 procedure whenever multiple comparisons were performed while implementing a
4 particular statistical hypothesis test. The corrected p-values are designated as p_c . For
5 single hypothesis testing, we report the uncorrected p-value. P or $p_c < 0.05$ are
6 considered significant.

1 **Results**

2

3 **Patient Demographics**

4

5 A total of 6,033 EMBs from 544 HTx patients, including four cardiac retransplants, were
6 evaluated (**Figure 1**). We divided all patients into one of four groups based on history of
7 pAMR and DSA results: pAMR+/DSA+ (n=45, 8.3%), pAMR+/DSA- (n=30, 5.5%),
8 pAMR-/DSA+ (n=95, 17.5%), and pAMR-/DSA- (n=374, 68.8%) patients.

9

10 Characteristics of the study population are summarized in **Tables 1** and **S1**. HTx
11 recipients were followed for a total of 1,999.2 person-years from the time of HTx.

12

13 **Association of pAMR/DSA classification with overall and cardiac survival**

14

15 A total of 61 (11.2%) patients died or underwent cardiac retransplant during the follow-
16 up period. Adjudicated causes of death are provided in **Table S2**. Initial adjudication of
17 cause of death agreed 87.7% of the time with a Cohen's kappa of 0.82 (0.69, 0.94; $p <$
18 0.001).

19

20 Overall survival was significantly lower in pAMR+/DSA+ compared to pAMR-/DSA-
21 patients (HR = 2.63; 95% CI, 1.35-5.11; $p_c = 0.013$; **Figure 2A**). Cardiac survival was
22 also significantly lower in the pAMR+/DSA+ compared to pAMR-/DSA- group (HR =
23 7.00; 95% CI, 2.31-21.20; $p_c = 0.002$; **Figure 2B**). There was no significant difference in
24 overall or cardiac survival in the pAMR+/DSA- ($p_c = 1.000$) and pAMR-/DSA+ groups (p_c
25 = 1.000) compared to pAMR-/DSA- patients. Sensitivity analyses performed with

1 dnDSAs and initial pAMR/DSA classification from the first pAMR+ or DSA+ result, with
2 the concurrent corresponding DSA or pAMR test result, also demonstrated similar
3 findings (not shown).

5 **Analysis of pAMR+/DSA+ patients**

6
7 The pAMR+/DSA+ patients demonstrated significantly later diagnosis of pAMR after
8 HTx compared to the pAMR+/DSA- patients (33.6 vs 3.7 weeks; $p = 0.004$). The
9 majority (62.2%) of pAMR+/DSA+ patients were diagnosed by pAMR+ and DSA+
10 results concurrently, i.e., within one month of either test. A small number of patients
11 (6.7%) were found to have a DSA+ results three months after a pAMR+ result. No
12 patient with an initial pAMR+/DSA- classification had a primary outcome of death or
13 retransplant within a year of a pAMR diagnosis.

14
15 There was no significant difference in time to dnDSA positivity in pAMR+/DSA+
16 compared to pAMR-/DSA+ patients (20.3 vs 17.0 weeks; $p = 0.941$). Detection of both
17 class I and II dnDSAs on initial DSA+ testing demonstrated the highest positive
18 predictive value than other DSAs, as summarized in **Table S3**. Detection of both class I
19 and II dnDSAs on initial DSA+ testing was also associated with greater odds for pAMR2
20 or pAMR3 grades than class II dnDSAs alone (OR = 5.92; 95% CI, 1.02-33.74; $p_c =$
21 0.025) and showed a trend for greater odds compared to class I dnDSAs alone (OR =
22 4.67; 95% CI, 0.70-36.86; $p_c = 0.147$). Detection of both class I and II dnDSAs at any
23 time post-HTx had a significantly higher risk of pAMR, cardiac allograft dysfunction,

1 CAV, cardiac allograft failure, and all-cause death or retransplant ($p < 0.001$ for all).
2 Class II dnDSAs alone ($p < 0.001$) predicted pAMR but not other clinical outcomes. We
3 did not find specific class II dnDSAs alone that significantly increased the risk for pAMR
4 compared to other class II dnDSAs. Class I dnDSAs alone did not predict pAMR nor
5 other clinical outcomes.

6

7 **Cardiac allograft dysfunction in pAMR+/DSA+ patients**

8

9 We found that a pAMR+/DSA+ status independently predicted cardiac allograft
10 dysfunction (**Table 2**). In contrast, the rates of cardiac allograft dysfunction for
11 pAMR+/DSA- ($p = 0.601$) and pAMR-/DSA+ groups ($p = 0.235$) were not significantly
12 different from the pAMR-/DSA- patients, with these three groups demonstrating an
13 occurrence of cardiac allograft dysfunction within the range of 10 to 16%. In
14 pAMR+/DSA+ patients, diagnosis of pAMR in the first year or after 1-year post-HTx also
15 did not show differences in cardiac allograft dysfunction, cardiac survival, or overall
16 survival (not shown).

17

18 Presence of cardiac allograft dysfunction was associated with lower overall and cardiac
19 survival (**Table 3** and **Table S4**). In the pAMR+/DSA+ group, patients with cardiac
20 allograft dysfunction had significantly lower overall and cardiac survival compared to
21 those without allograft dysfunction (**Figure 3**). Thus, lower overall and cardiac survival
22 in pAMR+/DSA+ patients were mediated by cardiac allograft dysfunction.

23

1 **Predictors for dnDSAs**

2
3 Younger recipient age, medication nonadherence, and PGD were independent
4 predictors for development of dnDSAs (**Table 4**). Patients with PGD demonstrated a
5 significant increase in dnDSAs within three weeks post-HTx (**Figure 4**). PGD also
6 showed a trend towards increased pAMR (HR = 1.66; 95% CI, 0.98-2.79; p = 0.058).
7 Additional subgroup analyses did not show utilization of extracorporeal membrane
8 oxygenation post-HTx or donation after circulatory death (DCD) to be significantly
9 associated with dnDSAs.

10

11 **Discussion**

12
13 In this retrospective cohort of 544 adult HTx patients with 2,000 patient-years of follow-
14 up, we observed the following key findings. First, DSA testing with contemporary ISHLT
15 pAMR grading identified pAMR+/DSA+ patients to have significantly lower overall and
16 cardiac survival compared to pAMR-/DSA- patients. Second, in the pAMR+/DSA+
17 group, we found that lower overall and cardiac survival was mediated by cardiac
18 allograft dysfunction. Third, detection of both class I and II dnDSAs had the highest
19 predictive value for pAMR. Fourth, PGD is a novel risk factor for the development of
20 dnDSAs.

21
22 With the reevaluation of the utility of surveillance EMBs in the contemporary era,⁶ the
23 current study findings support the use of DSA testing as the primary method of
24 surveillance for clinically relevant pAMR. While Clerkin et al. previously showed no

1 difference in cardiac allograft failure in patients with pAMR or DSAs,¹⁴ substudy analysis
2 showed that dnDSAs were associated with significantly lower cardiac survival, which
3 are consistent with our findings as well as others.^{15,16} However, we go further to
4 demonstrate that the risk of lower overall and cardiac survival is found specifically in the
5 pAMR+/DSA+ group. Thus, our proposed strategy would redefine the current role of
6 pAMR surveillance³ to for-cause testing upon a DSA+ result.⁶ Coutance et al. also
7 recently proposed a clinical prediction model which includes history of a prior ISHLT
8 pAMR2 diagnosis, cardiac allograft dysfunction, and DSA as 3 of the 5 predictor
9 variables.⁸ In contrast, our suggested strategy only requires DSA screening and, more
10 importantly, provides an opportunity to prevent cardiac allograft dysfunction in
11 pAMR+/DSA+ patients. Additionally, we note that new noninvasive biomarker testing,
12 including donor-derived cell-free DNA,¹⁷ may play a future role in pAMR risk
13 stratification. However, DSA testing will continue to be an essential assay in the
14 foreseeable future and ongoing randomized controlled trials (e.g., NCT06414603:
15 ACES-EMB) are evaluating novel noninvasive biomarkers as an adjunct to DSA testing.

16

17 We hypothesize that ischemia-reperfusion tissue injury post-HTx predominantly
18 contributes to early positive C4d immunostaining in pAMR+/DSA- patients, while
19 complement activation due to dnDSAs is likely responsible for later positive C4d
20 immunostaining that occurs in pAMR+/DSA+ patients. Previous studies have shown
21 positive C4d immunostaining in the early post-HTx period could result from the lectin
22 complement pathway related to ischemia-reperfusion tissue injury.^{18,19} Mantell et al.
23 also have shown transcriptomic differences between the pAMR+/DSA+ and

1 pAMR+/DSA- groups, with significant upregulation of genes related to immunity in the
2 pAMR+/DSA+ patients.²⁰ In addition, while non-HLA antibodies continue to be
3 investigated in pAMR,²¹ there was no appreciable difference in outcomes in the
4 pAMR+/DSA- compared to the pAMR-/DSA- group to suggest a meaningful clinical
5 effect by non-HLA antibodies.

6
7 Furthermore, we found that the pAMR+/DSA+ patients with cardiac allograft dysfunction
8 carried most of the increased risk for lower overall and cardiac survival and accounted
9 for 18% of deaths or cardiac retransplants while representing only 4% of our HTx
10 cohort. Cardiac allograft dysfunction was previously part of the clinical criteria for
11 diagnosis of antibody mediated rejection,²² and prior studies have also demonstrated
12 the prognostic importance of cardiac allograft dysfunction, although not specifically in
13 pAMR+/DSA+ patients.^{23,24} Thus, our study highlights the importance of surveillance for
14 cardiac allograft dysfunction in pAMR+/DSA+ patients, given the significant increase in
15 mortality once cardiac allograft dysfunction occurs.²⁵ Of note, cardiac allograft
16 dysfunction also occurred in pAMR-/DSA+ and pAMR-/DSA- patients, albeit at much
17 lower rates. The cause was not identified in many cases (36%) and thus were
18 considered to be nonspecific graft dysfunction.²⁶

19
20 Detection of both class I and II dnDSAs increased the risk for pAMR+ diagnosis three
21 times compared to detection of other dnDSAs. In contrast to some other studies,^{14,27} we
22 were not able to identify specific class II dnDSAs alone that significantly increased the
23 risk for future pAMR more than other class II dnDSAs. We hypothesize some of the

1 differences in literature are related to how HLA-DQ DSAs, the most frequently detected
2 of the DSAs, are categorized when occurring in the presence of other DSAs.²⁸ In the
3 current study, we evaluated class I alone, class II alone, and both class I and II dnDSAs
4 as separate categories and also evaluated for progression from one dnDSA category to
5 another in subsequent testing.

6
7 Additionally, our study findings indirectly suggest increased immunogenicity associated
8 with detection of both class I and II dnDSAs compared to either class I or II dnDSAs
9 alone. HTx patients with both class I and II dnDSAs demonstrated a higher rate of more
10 severe initial pAMR+ grades compared to patients with either class I or II dnDSAs
11 alone. Patients with both class I and II dnDSAs were also at a significantly increased
12 risk for pAMR-mediated clinical outcomes, including CAV, while patients with either
13 class I or II dnDSAs alone were not. Prior studies have also shown that detection of
14 class I and II DSAs, using the contemporary solid phase assays, were more predictive
15 of persistent and cytotoxic DSAs than either class I or II DSAs alone.^{29,30} While class II
16 DSAs can activate endothelial cells toward a proinflammatory response,³¹ the potential
17 synergistic interaction of both class I and II DSAs warrants further study.

18
19 Finally, our data demonstrates PGD as a possible risk factor for development of
20 dnDSAs, providing a novel insight into the potential relationship of PGD, dnDSAs, and
21 pAMR in the peri-transplant period. Han et al. previously showed a similar incidence of
22 dnDSAs in patients with PGD compared to those without PGD.³² However, this study
23 included a patient cohort with a much higher preformed DSA prevalence and lower rate

1 of moderate or severe PGD than typically described from other centers,³³ which likely
2 explains the differences from our study findings. Additionally, at our institution, patients
3 are initially tested for a DSA response at 10-14 days post-HTx. Thus, we found a
4 significant increase in dnDSAs three weeks post-HTx, suggesting a memory B-cell
5 response related to PGD. Early inflammatory injury to the donor heart and increased
6 transfusions of blood products^{34,35}, both factors associated with PGD, may contribute to
7 allosensitization that leads to dnDSAs. Interestingly, DCD HTx were not associated with
8 dnDSAs in a subgroup analysis, perhaps related to a prior observation that DCD HTx
9 patients experience a different mechanism for PGD with quicker recovery than donation
10 after brain death HTx patients.³⁶ As the incidence for PGD continues at a high rate in
11 the contemporary era,^{33,37} earlier DSA testing at 10-14 days post-HTx should be
12 considered in PGD patients and future studies should evaluate specific factors
13 associated with PGD that may cause allosensitization.

14

15 **Limitations**

16

17 This study should be interpreted within the context of several important limitations. First,
18 this was a retrospective study from a single center and carries with it the usual
19 limitations for these studies, including generalizability and the potential confounding of
20 treatment effect. Thus, our findings do not provide guidance for treatment decisions,
21 due to the wide variability in treatment for pAMR in our study. However, only a minority
22 of pAMR+/DSA- patients were treated (23%) and, despite this, the pAMR+/DSA- group
23 had more favorable outcomes when compared to the pAMR+/DSA+ group (73%

1 treated). Second, our center utilizes C4d immunofluorescence with the use of CD68 and
2 C4d immunoperoxidase staining in equivocal cases or when immunofluorescence is not
3 feasible.¹ However, previous studies have shown that immunofluorescence and
4 immunoperoxidase staining are similarly sensitive and specific for C4d positivity and our
5 prevalence of pAMR was similar to prior studies.^{14,38} Third, we did not evaluate different
6 MFI values for DSAs as the goal of our study was to determine the utility of DSA with
7 pAMR testing using prespecified MFI cutoffs. Additionally, MFI measurements have
8 been known to vary among HLA laboratories, limiting translatability of MFI findings.³⁹
9 Lastly, PGD diagnosis was based on documentation by HTx clinical team members or
10 use of mechanical circulatory support within 24 hours after HTx. Thus, while the PGD
11 rate was similar to most prior studies,³³ mild and moderate PGD are potentially
12 underestimated, a recognized limitation due to the current PGD criteria.³⁷

13

14 **Conclusions**

15

16 Our study findings support the potential use of DSA testing as the primary surveillance
17 method to identify the high-risk pAMR+/DSA+ patients. Additionally, PGD is a novel risk
18 factor for dnDSAs and earlier DSA testing at 10-14 days post-HTx should be considered
19 in patients with PGD.

1 **Acknowledgements:** The authors acknowledge Priyeshia Bijlani, MD, from UCSD for
2 her contribution to data collection and review and editing of prior versions of the article,
3 Hyoungmin Kim, from UCSD for his contribution to data collection, Taylor Tran, BS,
4 from UCSD for his contribution to data collection, Layla Myers, BS, from UCSD for her
5 contribution to data collection, and Michael C. Fishbein, MD, from UCLA for his review
6 and editing of the final manuscript.

1 **Sources of Funding:**

2

3 The project described was partially supported by the National Institutes of Health (PJK),
4 Grants UL1TR001442 and 1KL2TR001444. The content is solely the responsibility of
5 the authors and does not necessarily represent the official views of the NIH. Dr.
6 Nicholas Wettersten and this work was supported (or supported in part) by Career
7 Development Award Number IK2 CX002105 from the United States (U.S.) Department
8 of Veterans Affairs Clinical Sciences R&D (CSR) Service. The contents do not
9 represent the view of the U.S. Department of Veterans Affairs or the United States
10 Government.

11

12 **Disclosure Statement:**

13

14 PJK reports having received payments from CareDx and Natera for consulting and
15 working at an institution that received research payments from CareDx and Natera.
16 Neither CareDx nor Natera were involved in the conceptualization of the study, data
17 collection and analysis, manuscript preparation, and editing of the final manuscript.

1 REFERENCES

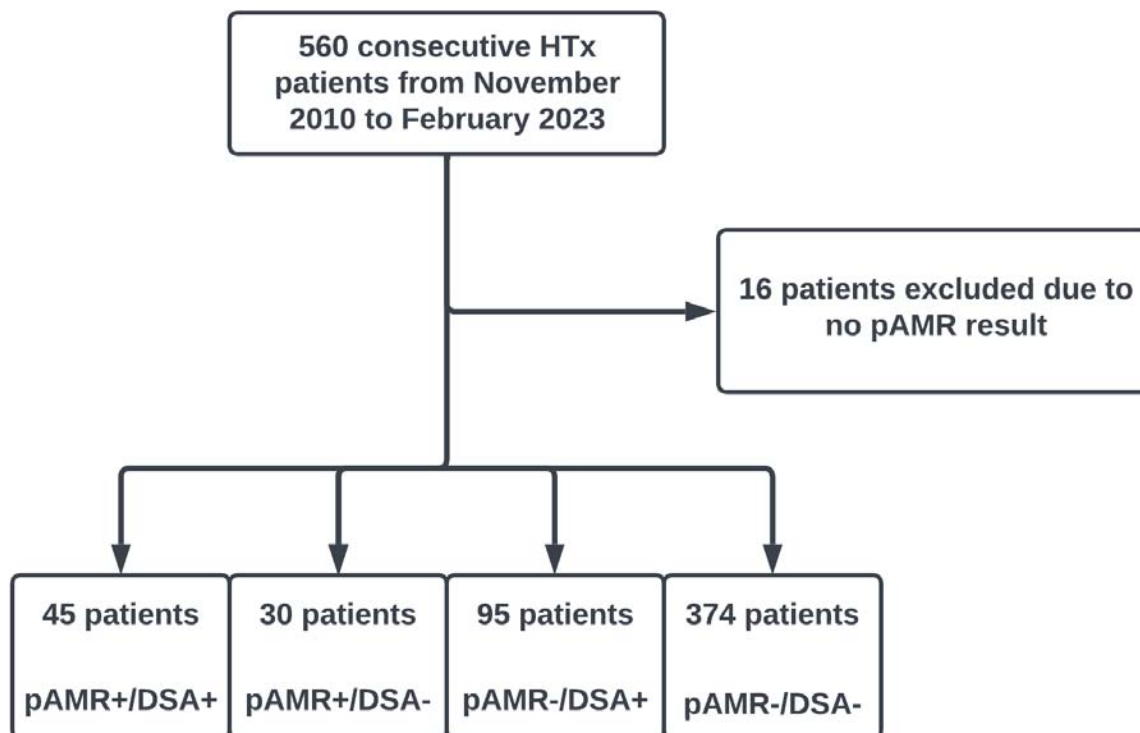
- 2 1. Berry GJ, Burke MM, Andersen C, et al. The 2013 International Society for Heart
3 and Lung Transplantation Working Formulation for the standardization of
4 nomenclature in the pathologic diagnosis of antibody-mediated rejection in heart
5 transplantation. *J Heart Lung Transplant*. 2013;32(12):1147-1162.
6 doi:10.1016/j.healun.2013.08.011
- 7 2. Stewart S, Winters GL, Fishbein MC, et al. Revision of the 1990 working
8 formulation for the standardization of nomenclature in the diagnosis of heart
9 rejection. *J Heart Lung Transplant*. 2005;24(11):1710-1720.
10 doi:10.1016/j.healun.2005.03.019
- 11 3. Velleca A, Shullo MA, Dhital K, et al. The International Society for Heart and Lung
12 Transplantation (ISHLT) guidelines for the care of heart transplant recipients. *J*
13 *Heart Lung Transplant*. 2023;42(5):e1-e141. doi:10.1016/j.healun.2022.10.015
- 14 4. Colvin MM, Cook JL, Chang P, et al. Antibody-mediated rejection in cardiac
15 transplantation: emerging knowledge in diagnosis and management: a scientific
16 statement from the American Heart Association. *Circulation*. 2015;131(18):1608-
17 1639. doi:10.1161/CIR.0000000000000093
- 18 5. Khush KK, Hsich E, Potena L, et al. The International Thoracic Organ Transplant
19 Registry of the International Society for Heart and Lung Transplantation: Thirty-
20 eighth adult heart transplantation report - 2021; Focus on recipient characteristics.
21 *J Heart Lung Transplant*. 2021;40(10):1035-1049.
22 doi:10.1016/j.healun.2021.07.015
- 23 6. Cusi V, Vaida F, Wettersten N, et al. Incidence of Acute Rejection Compared With
24 Endomyocardial Biopsy Complications for Heart Transplant Patients in the
25 Contemporary Era. *Transplantation*. 2024;108(5):1220-1227.
26 doi:10.1097/TP.0000000000004882
- 27 7. Zavyalova D, Abraha J, Rao P, Morris GP. Incidence and impact of allele-specific
28 anti-HLA antibodies and high-resolution HLA genotyping on assessing immunologic
29 compatibility. *Hum Immunol*. 2021;82(3):147-154.
30 doi:10.1016/j.humimm.2021.01.002
- 31 8. Coutance G, Kransdorf E, Aubert O, et al. Clinical Prediction Model for Antibody-
32 Mediated Rejection: A Strategy to Minimize Surveillance Endomyocardial Biopsies
33 After Heart Transplantation. *Circ Heart Fail*. 2022;15(10):e009923.
34 doi:10.1161/CIRCHEARTFAILURE.122.009923
- 35 9. Mehra MR, Crespo-Leiro MG, Dipchand A, et al. International Society for Heart and
36 Lung Transplantation working formulation of a standardized nomenclature for
37 cardiac allograft vasculopathy-2010. *J Heart Lung Transplant*. 2010;29(7):717-727.
38 doi:10.1016/j.healun.2010.05.017

- 1 10. Kobashigawa J, Zuckermann A, Macdonald P, et al. Report from a consensus
2 conference on primary graft dysfunction after cardiac transplantation. *J Heart Lung*
3 *Transplant.* 2014;33(4):327-340. doi:10.1016/j.healun.2014.02.027
- 4 11. Sellarés J, de Freitas DG, Mengel M, et al. Understanding the causes of kidney
5 transplant failure: the dominant role of antibody-mediated rejection and
6 nonadherence. *Am J Transplant.* 2012;12(2):388-399. doi:10.1111/j.1600-
7 6143.2011.03840.x
- 8 12. Kindem IA, Bjerre A, Hammarstrøm C, Naper C, Midtvedt K, Åsberg A. Kidney-
9 transplanted Adolescents—Nonadherence and Graft Outcomes During the
10 Transition Phase: A Nationwide Analysis, 2000–2020. *Transplantation.*
11 2023;107(5):1206. doi:10.1097/tp.0000000000004431
- 12 13. Wiebe C, Gibson IW, Blydt-Hansen TD, et al. Evolution and clinical pathologic
13 correlations of de novo donor-specific HLA antibody post kidney transplant: Clinical
14 pathologic correlations of DE Novo DSA. *Am J Transplant.* 2012;12(5):1157-1167.
15 doi:10.1111/j.1600-6143.2012.04013.x
- 16 14. Clerkin KJ, Farr MA, Restaino SW, et al. Donor-specific anti-HLA antibodies with
17 antibody-mediated rejection and long-term outcomes following heart
18 transplantation. *J Heart Lung Transplant.* 2017;36(5):540-545.
19 doi:10.1016/j.healun.2016.10.016
- 20 15. Smith JD, Banner NR, Hamour IM, et al. De novo donor HLA-specific antibodies
21 after heart transplantation are an independent predictor of poor patient survival. *Am*
22 *J Transplant.* 2011;11(2):312-319. doi:10.1111/j.1600-6143.2010.03383.x
- 23 16. Setia G, Nishihara K, Singer Englar T, Zhang X, Patel J, Kobashigawa J. Crossing
24 low/moderate-level donor-specific antibodies during heart transplantation. *Clinical*
25 *Transplantation.* 2021;35(3). doi:10.1111/ctr.14196
- 26 17. Agbor-Enoh S, Shah P, Tunc I, et al. Cell-Free DNA to Detect Heart Allograft Acute
27 Rejection. *Circulation.* 2021;143(12):1184-1197.
28 doi:10.1161/CIRCULATIONAHA.120.049098
- 29 18. Baldwin WM 3rd, Samaniego-Picota M, Kasper EK, et al. Complement deposition
30 in early cardiac transplant biopsies is associated with ischemic injury and
31 subsequent rejection episodes. *Transplantation.* 1999;68(6):894-900.
32 doi:10.1097/00007890-199909270-00024
- 33 19. Collard CD, Väkevä A, Morrissey MA, et al. Complement activation after oxidative
34 stress: role of the lectin complement pathway. *Am J Pathol.* 2000;156(5):1549-
35 1556. doi:10.1016/S0002-9440(10)65026-2
- 36 20. Mantell BS, Cordero H, See SB, et al. Transcriptomic heterogeneity of antibody
37 mediated rejection after heart transplant with or without donor specific antibodies. *J*

- 1 *Heart Lung Transplant*. 2021;40(11):1472-1480. doi:10.1016/j.healun.2021.06.012
- 2 21. Butler CL, Hickey MJ, Jiang N, et al. Discovery of non-HLA antibodies associated
3 with cardiac allograft rejection and development and validation of a non-HLA
4 antigen multiplex panel: From bench to bedside. *Am J Transplant*.
5 2020;20(10):2768-2780. doi:10.1111/ajt.15863
- 6 22. Reed EF, Demetris AJ, Hammond E, et al. Acute antibody-mediated rejection of
7 cardiac transplants. *J Heart Lung Transplant*. 2006;25(2):153-159.
8 doi:10.1016/j.healun.2005.09.003
- 9 23. Clerkin KJ, Restaino SW, Zorn E, Vasilescu ER, Marboe CC, Mancini DM. The
10 effect of timing and graft dysfunction on survival and cardiac allograft vasculopathy
11 in antibody-mediated rejection. *J Heart Lung Transplant*. 2016;35(9):1059-1066.
12 doi:10.1016/j.healun.2016.04.007
- 13 24. Tan CD, Sokos GG, Pidwell DJ, et al. Correlation of Donor-Specific Antibodies,
14 Complement and Its Regulators with Graft Dysfunction in Cardiac Antibody-
15 Mediated Rejection. *American Journal of Transplantation*. 2009;9(9):2075-2084.
16 doi:10.1111/j.1600-6143.2009.02748.x
- 17 25. Hodges AM, Lyster H, McDermott A, et al. Late antibody-mediated rejection after
18 heart transplantation following the development of de novo donor-specific human
19 leukocyte antigen antibody. *Transplantation*. 2012;93(6):650-656.
20 doi:10.1097/TP.0b013e318244f7b8
- 21 26. Pham MX, Teuteberg JJ, Kfoury AG, et al. Gene-expression profiling for rejection
22 surveillance after cardiac transplantation. *N Engl J Med*. 2010;362(20):1890-1900.
23 doi:10.1056/NEJMoa0912965
- 24 27. Zhang X, Kransdorf E, Levine R, Patel JK, Kobashigawa JA. HLA-DQ mismatches
25 stimulate de novo donor specific antibodies in heart transplant recipients. *Hum*
26 *Immunol*. 2020;81(7):330-336. doi:10.1016/j.humimm.2020.04.003
- 27 28. DeVos JM, Gaber AO, Knight RJ, et al. Donor-specific HLA-DQ antibodies may
28 contribute to poor graft outcome after renal transplantation. *Kidney Int*.
29 2012;82(5):598-604. doi:10.1038/ki.2012.190
- 30 29. Ho EK, Vasilescu ER, Vlad G, Clynes RA, Ratner LE, Suci-Foca N. Detection of
31 donor-specific-antibodies by solid phase assay and its relevance to complement-
32 dependent-lymphocytotoxicity cross-matching in kidney transplantation. *Hum*
33 *Immunol*. 2014;75(6):520-523. doi:10.1016/j.humimm.2014.03.002
- 34 30. Irving CA, Carter V, Gennery AR, et al. Effect of persistent versus transient donor-
35 specific HLA antibodies on graft outcomes in pediatric cardiac transplantation. *J*
36 *Heart Lung Transplant*. 2015;34(10):1310-1317. doi:10.1016/j.healun.2015.05.001

- 1 31. Cross AR, Lion J, Poussin K, et al. HLA-DQ alloantibodies directly activate the
2 endothelium and compromise differentiation of FoxP3high regulatory T
3 lymphocytes. *Kidney Int.* 2019;96(3):689-698. doi:10.1016/j.kint.2019.04.023
- 4 32. Han J, Moayed Y, Henricksen EJ, et al. Primary Graft Dysfunction Is Associated
5 With Development of Early Cardiac Allograft Vasculopathy, but Not Other Immune-
6 mediated Complications, After Heart Transplantation. *Transplantation.*
7 2023;107(7):1624-1629. doi:10.1097/TP.0000000000004551
- 8 33. Benck L, Kransdorf EP, Emerson DA, et al. Recipient and surgical factors trigger
9 severe primary graft dysfunction after heart transplant. *J Heart Lung Transplant.*
10 2021;40(9):970-980. doi:10.1016/j.healun.2021.06.002
- 11 34. McDonald MM, Mihalj M, Zhao B, et al. Clinicopathological correlations in heart
12 transplantation recipients complicated by death or re-transplantation. *Front*
13 *Cardiovasc Med.* 2022;9. doi:10.3389/fcvm.2022.1014796
- 14 35. Holmström EJ, Syrjälä SO, Dhaygude K, et al. Severe primary graft dysfunction of
15 the heart transplant is associated with increased plasma and intragraft
16 proinflammatory cytokine expression. *J Heart Lung Transplant.* 2023;42(6):807-
17 818. doi:10.1016/j.healun.2023.01.005
- 18 36. Ayer A, Truby LK, Schroder JN, et al. Improved outcomes in severe primary graft
19 dysfunction after heart transplantation following donation after circulatory death
20 compared with donation after brain death. *J Card Fail.* 2023;29(1):67-75.
21 doi:10.1016/j.cardfail.2022.10.429
- 22 37. Truby LK, Takeda K, Topkara VK, et al. Risk of severe primary graft dysfunction in
23 patients bridged to heart transplantation with continuous-flow left ventricular assist
24 devices. *J Heart Lung Transplant.* 2018;37(12):1433-1442.
25 doi:10.1016/j.healun.2018.07.013
- 26 38. Chantranuwat C, Qiao JH, Kobashigawa J, Hong L, Shintaku P, Fishbein MC.
27 Immunoperoxidase staining for C4d on paraffin-embedded tissue in cardiac
28 allograft endomyocardial biopsies: comparison to frozen tissue
29 immunofluorescence. *Appl Immunohistochem Mol Morphol.* 2004;12(2):166-171.
30 doi:10.1097/00129039-200406000-00012
- 31 39. Reed EF, Rao P, Zhang Z, et al. Comprehensive assessment and standardization
32 of solid phase multiplex-bead arrays for the detection of antibodies to HLA. *Am J*
33 *Transplant.* 2013;13(7):1859-1870. doi:10.1111/ajt.12287

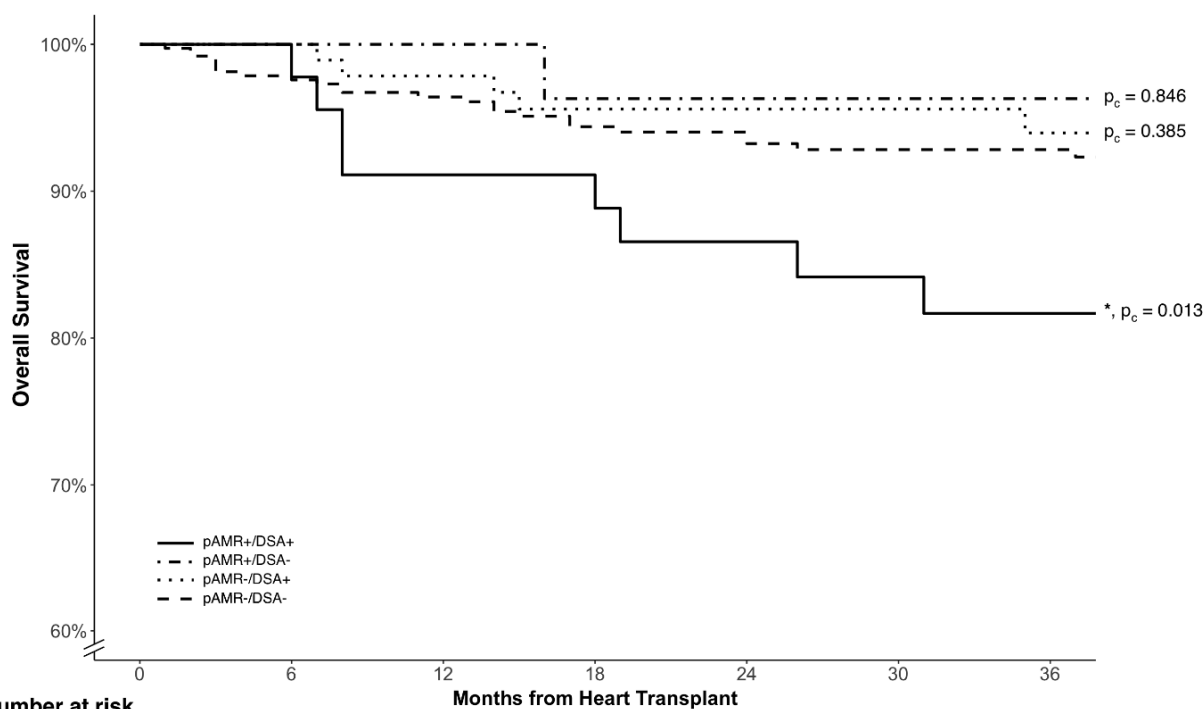
- 1 **Figure 1.** Flow diagram for heart transplants included then grouped based on history of
- 2 pAMR and DSA results. HTx, heart transplantation; DSA, donor-specific antibodies;
- 3 pAMR, pathologic antibody mediated rejection.



4
5
6

1 **Figure 2.** Kaplan-Meier Curves by pAMR/DSA Status for **(A)** Overall and **(B)** Cardiac
2 Survival. The pAMR+/DSA+ patients show significantly reduced overall and cardiac
3 survival compared to the pAMR-/DSA- group. The pAMR+/DSA- and pAMR-/DSA+
4 groups were not significantly different from the pAMR-/DSA- group. Fine-Gray
5 subdistribution hazard model was used to account for competing causes of death.
6 Adjusted p-values for pairwise comparisons compared to the pAMR-/DSA- reference
7 group are provided next to the survival curves. DSA, donor-specific antibodies; pAMR,
8 pathologic antibody mediated rejection.

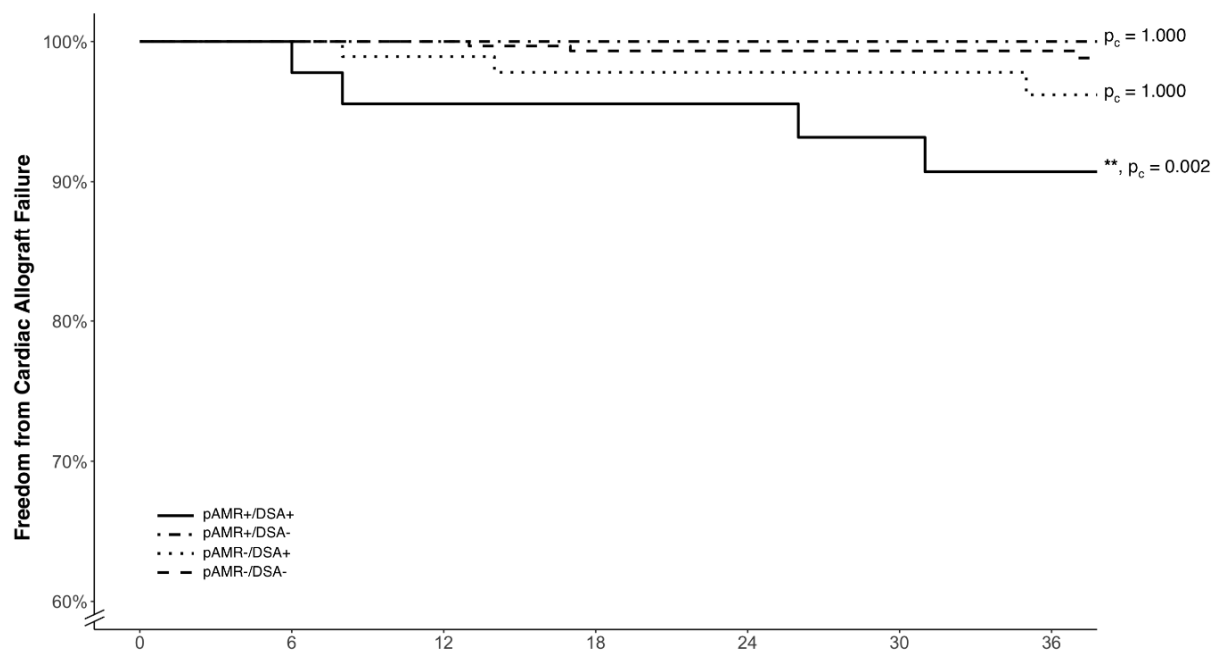
A.



Number at risk

	0	6	12	18	24	30	36
pAMR+/DSA+	45	44	41	39	37	34	32
pAMR+/DSA-	30	28	27	25	24	24	22
pAMR-/DSA+	95	93	87	78	73	62	57
pAMR-/DSA-	374	347	301	260	235	203	187

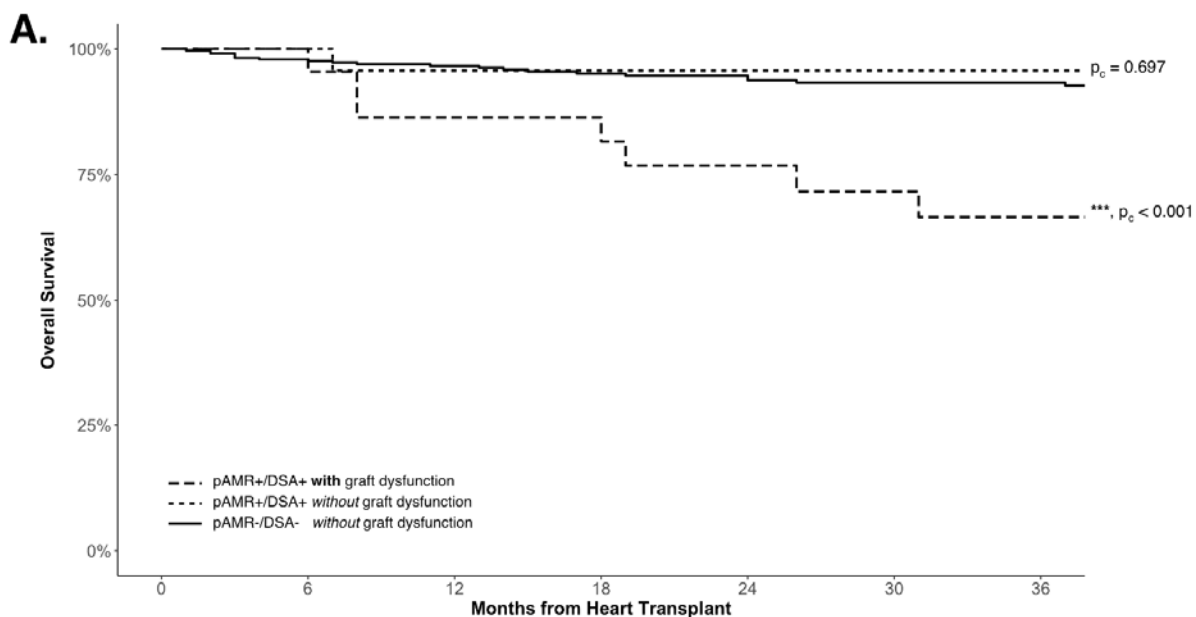
B.



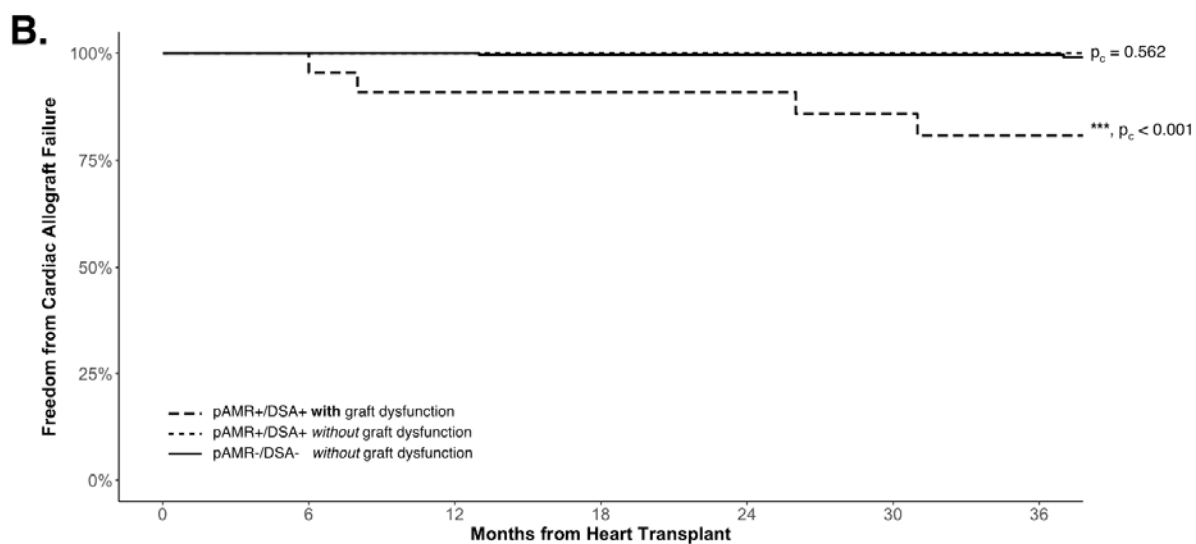
Number at risk

	0	6	12	18	24	30	36
pAMR+/DSA+	45	44	43	42	41	38	36
pAMR+/DSA-	30	28	27	26	25	25	23
pAMR-/DSA+	95	93	88	80	75	64	59
pAMR-/DSA-	374	356	314	277	252	218	198

1 **Figure 3.** Kaplan-Meier Curves by Cardiac Allograft Dysfunction for **(A)** Overall and **(B)**
2 Cardiac Survival. The pAMR+/DSA+ patients with graft dysfunction showed significantly
3 worse overall and cardiac survival compared to both pAMR+/DSA+ and pAMR-/DSA-
4 patients without graft dysfunction. Adjusted p-values for pairwise comparisons
5 compared to the pAMR-/DSA- patients without allograft dysfunction, as a reference
6 group, are provided next to the survival curves. DSA, donor-specific antibodies; pAMR,
7 pathologic antibody mediated rejection.

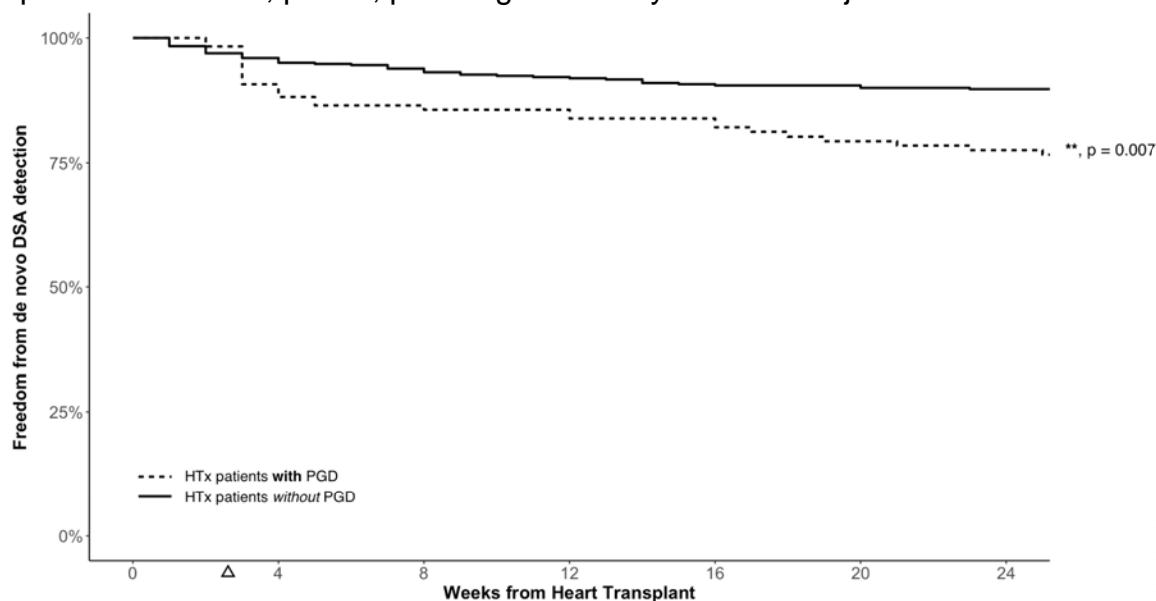


pAMR+/DSA+ with graft dysfunction	22	21	19	17	16	14	12
pAMR+/DSA+ without graft dysfunction	23	23	22	22	21	20	20
pAMR-/DSA- without graft dysfunction	334	308	266	230	207	175	160



pAMR+/DSA+ with graft dysfunction	22	21	20	19	19	17	15
pAMR+/DSA+ without graft dysfunction	23	23	23	23	22	21	21
pAMR-/DSA- without graft dysfunction	334	316	277	244	222	188	171

1 **Figure 4.** Kaplan-Meier Curves for Freedom from De Novo DSA Detection in HTx
 2 patients with and without PGD. HTx patients with PGD demonstrated a significant
 3 increase in de novo DSAs three weeks post-HTx (triangle), after which the hazard ratios
 4 were not significantly different between HTx patients with and without PGD. DSA,
 5 donor-specific antibodies; pAMR, pathologic antibody mediated rejection.



HTx patients with PGD	424	400	389	381	370	363	355
HTx patients without PGD	118	103	100	95	93	89	85

6

1 **Table 1.** Baseline characteristics of heart transplant patients by pAMR and DSA results.
 2 ACR, acute cellular rejection; AMR, antibody mediated rejection; BMI, body mass index;
 3 CMV, cytomegalovirus; DCD, donation after cardiac death; DSA, donor-specific
 4 antibodies; HTx, heart transplantation; ICM, ischemic cardiomyopathy; MCS,
 5 mechanical circulatory support; NICM, nonischemic cardiomyopathy; PHM, predicted
 6 heart mass; PRA, panel reactive antibodies.

Characteristics	pAMR+/DSA+ Group 1 (n = 45)	pAMR+/DSA- Group 2 (n = 30)	pAMR-/DSA+ Group 3 (n = 95)	pAMR-/DSA- Group 4 (n = 374)	p-value
Donor characteristics					
Age, y, mean (SD)	32.1 (10.7)	36.6 (11.9)	31.6 (10.3)	33.0 (10.6)	0.996
Female, N (%)	12 (28.6)	5 (17.2)	20 (21.3)	54 (15.3)	0.123
Recipient characteristics					
Age, y, mean (SD)	45.7 (18.5)	58.0 (11.5)	51.0 (15.3)	55.3 (13.2)	<0.001
Female, N (%)	15 (33.3)	6 (20.0)	16 (16.8)	71 (19.0)	0.136
Race					0.428
Asian, N (%)	1 (2.2)	3 (10.0)	6 (6.3)	27 (7.2)	-
Black, N (%)	8 (17.8)	5 (16.7)	14 (14.7)	42 (11.2)	-
Native American, N (%)	0	0	2 (2.1)	2 (0.5)	-
Other Race, N (%)	4 (8.9)	0	2 (7.4)	24 (6.4)	-
Pacific Islander, N (%)	0	1 (3.3)	3 (3.2)	8 (2.1)	-
White, N (%)	32 (71.1)	21 (70.0)	63 (66.3)	271 (72.5)	-
Ethnicity					
Hispanic or Latino, N (%)	17 (37.8)	7 (23.3)	34 (35.8)	107 (28.6)	0.293
Recipient BMI, mean (SD)	25.4 (4.6)	25.8 (5.1)	26.2 (4.5)	26.8 (4.3)	0.020
Indication for Transplant					0.192
NICM, N (%)	27 (60.0)	21 (70.0)	57 (60.0)	220 (58.8)	-
ICM, N (%)	13 (28.9)	7 (23.3)	29 (30.5)	136 (36.4)	-
Congenital, N (%)	4 (8.9)	0	6 (6.3)	12 (3.2)	-
Cardiac allograft failure, N (%)	1 (2.2)	2 (6.7)	3 (3.2)	6 (1.6)	-
Allosensitization pre-HTx (PRA \geq 10%), N (%)	10 (28.6)	3 (11.5)	21 (23.9)	51 (16.6)	0.135
Durable MCS, N (%)	12 (26.7)	10 (33.3)	33 (34.7)	133 (35.7)	0.710

Medical nonadherence, N (%)	21 (46.7)	5 (16.7)	17 (17.9)	46 (12.3)	<0.001
-----------------------------	-----------	----------	-----------	-----------	------------------

Transplant characteristics

Multiorgan transplant, N (%)	8 (17.8)	2 (6.7)	18 (18.9)	48 (12.8)	0.245
Cold ischemic time, min, mean (SD)	195.5 (49.4)	208.4 (55.2)	200.5 (58.4)	200.1 (67.7)	0.941
Sex mismatch (female D-male R), N (%)	3 (7.1)	1 (3.4)	10 (10.6)	28 (7.9)	0.675
PHM difference, % recipient PHM, mean (SD)	7.9 (22.1)	2.8 (26.3)	4.6 (18.9)	5.2 (20.9)	0.741
Induction therapy, N (%)	24 (60.0)	17 (58.6)	46 (48.9)	169 (47.5)	0.348
DCD, N (%)	3 (6.7)	4 (13.3)	12 (12.6)	63 (16.8)	0.290
CMV mismatch (D+/R-), N (%)	7 (16.3)	6 (20.0)	20 (21.3)	72 (19.8)	0.856

Transplant outcomes

De novo DSA	43 (97.7)	-	86 (95.6)	-	1.000
Mixed ACR and AMR	5 (11.1)	3 (10.0)	-	-	1.000
Cardiac allograft dysfunction	22 (48.9)	3 (10.0)	15 (15.8)	40 (10.7)	<0.001
Cardiac allograft vasculopathy	8 (20.0)	3 (11.1)	6 (7.0)	16 (5.0)	0.008
Future ACR	12 (28.6)	5 (16.7)	12 (12.8)	40 (11.1)	0.024

1 **Table 2.** Unipredictor and multipredictor Cox proportional hazards analyses for cardiac
 2 allograft dysfunction. Unipredictor parameters with a p-value ≤ 0.15 are included in
 3 addition to certain clinical parameters of interest. HRs and CIs are not provided for
 4 categorical variables in this table. ACR, acute cellular rejection; CI, confidence interval;
 5 cPRA, calculated panel reactive antibodies; DSA, donor-specific antibodies; ECMO,
 6 extracorporeal membrane oxygenation; HR, hazard ratio; HTx, heart transplantation;
 7 MCS, mechanical circulatory support; pAMR, pathologic antibody mediated rejection;
 8 PHM, predicted heart mass; pMCS, percutaneous mechanical circulatory support;
 9 UNOS, United Network for Organ Sharing. *, allosensitized patients defined as having a
 10 UNOS cPRA $\geq 10\%$.

Predictor	No. of patients (n = 544)	No. of events (n = 80)	HR	95% CI	p-value
Unipredictor analysis					
HTx indication (vs. non-ischemic cardiomyopathy)	544	80	-	-	0.020
Allosensitization pre-HTx*	457	67	0.89	0.48-1.67	0.715
Durable MCS at time of HTx (yes vs. no)	543	80	1.44	0.92-2.24	0.107
Medical nonadherence (yes vs. no)	544	80	2.64	1.67-4.18	<0.001
Donor age (by 10-yr)	520	78	0.88	0.71-1.08	0.207
Induction therapy (yes vs. no)	519	77	0.84	0.53-1.33	0.458
Cold ischemic time (per hour)	519	78	0.90	0.73-1.11	0.330
PHM difference (per % recipient PHM increment)	513	77	1.01	1.00-1.02	0.130
Donation after cardiac death (vs. brain death)	544	80	1.37	0.69-2.71	0.373
ECMO pre-HTx (yes vs. no)	540	79	2.62	0.82-8.32	0.103
pMCS pre-HTx (yes vs. no)	540	79	0.55	0.28-1.11	0.096

Primary graft dysfunction (yes vs. no)	542	80	2.95	1.87-4.67	<0.001
De novo DSAs (vs. no DSA)	528	73	2.17	1.35-3.46	0.001
Class I de novo DSAs alone (vs. no DSA)	528	73	0.40	0.06-2.91	0.366
Class II de novo DSAs alone (vs. no DSA)	528	73	1.41	0.74-2.69	0.292
Both class I and II de novo DSAs (vs. no DSA)	528	73	5.91	3.36-10.40	<0.001
Concurrent ACR grade with pAMR+ diagnosis (vs. pAMR+ with ACR grade 0R)	75	25	-	-	0.301
CMV mismatch (vs. CMV D-/R-)	531	80	-	-	0.190
Sex mismatch (female D-male R vs. male D-male R)	519	78	0.58	0.21-1.58	0.285
pAMR/DSA group (vs. pAMR-/DSA- group)	544	80	-	-	<0.001
Cardiac allograft Vasculopathy (vs. CAV grades 0 or 1)	445	63	8.82	3.18-24.44	<0.001
History of ACR > 1R (vs. ACR grades 0R/1R)	514	76	1.54	0.88-2.72	0.133

Multipredictor analysis

Medical nonadherence	544	80	2.36	1.36-4.08	0.002
Primary graft dysfunction	542	80	2.25	1.29-3.92	0.004
Ischemic cardiomyopathy as HTx indication*	544	80	2.07	1.22-3.51	0.007
pAMR+/DSA+ group [#]	544	80	2.36	1.19-4.66	0.014
Cardiac allograft vasculopathy	445	63	3.67	1.21-11.10	0.021

pMCS pre-HTx	540	79	0.46	0.19-1.11	0.083
PHM difference	513	77	1.01	1.00-1.02	0.084

1
2

1 **Table 3.** Unipredictor and multipredictor Cox proportional hazards analyses for overall
 2 survival. Unipredictor parameters with a p-value ≤ 0.15 are included in addition to
 3 certain clinical parameters of interest. HRs and CIs are not provided for categorical
 4 variables in this table. ACR, acute cellular rejection; CI, confidence interval; CMV,
 5 cytomegalovirus; cPRA, calculated panel reactive antibodies; DSA, donor-specific
 6 antibodies; ECMO, extracorporeal membrane oxygenation; HTx, heart transplantation;
 7 HR, hazard ratio; MCS, mechanical circulatory support; pAMR, pathologic antibody
 8 mediated rejection; PHM, predicted heart mass; pMCS, percutaneous mechanical
 9 circulatory support; UNOS, United Network for Organ Sharing. *, allosensitized patients
 10 defined as having a UNOS cPRA $\geq 10\%$.

Predictor	No. of patients (n = 544)	No. of events (n = 61)	HR	95% CI	p-value
Unipredictor analysis					
Recipient age (by 10-yr)	544	61	1.02	0.86-1.21	0.793
Recipient race and ethnicity (vs. non-Hispanic White)	544	61	-	-	0.027
Multiorgan Transplant (yes vs. no)	544	61	0.62	0.25-1.55	0.304
HTx indication (vs. non-ischemic cardiomyopathy)	544	61	-	-	0.403
Allosensitization pre-HTx*	457	44	0.98	0.47-2.05	0.962
Durable MCS at time of HTx (yes vs. no)	543	61	1.13	0.68-1.89	0.639
Medical nonadherence (yes vs. no)	544	61	2.33	1.37-3.96	0.002
Donor age (by 10-yr)	520	58	0.97	0.77-1.23	0.814
Induction therapy (yes vs. no)	519	58	1.23	0.71-2.11	0.463
Cold ischemic time (per hour)	519	58	0.86	0.66-1.11	0.238
PHM difference (per % recipient PHM increment)	513	58	1.00	0.99-1.01	0.775

Donation after cardiac death (vs. brain death)	544	61	1.16	0.45-3.01	0.759
ECMO pre-HTx (yes vs. no)	540	60	2.34	0.57-9.63	0.237
pMCS pre-HTx (yes vs. no)	540	60	1.37	0.72-2.61	0.337
Primary graft dysfunction (yes vs. no)	542	61	2.51	1.46-4.32	0.001
De novo DSAs (vs. no DSAs)	533	59	1.19	0.67-2.10	0.550
Class I de novo DSAs alone (vs. no DSAs)	533	59	-	-	0.996
Class II de novo DSAs alone (vs. no DSAs)	533	59	0.95	0.45-2.03	0.897
Both class I and II de novo DSAs (vs. no DSAs)	533	59	2.64	1.28-5.44	0.009
CMV mismatch (vs. D-/R-)	531	60	-	-	0.593
Sex mismatch (female D-male R vs. male D-male R)	519	58	2.27	1.16-4.42	0.016
pAMR/DSA group (vs. pAMR-/DSA- group)	544	61	-	-	0.018
Cardiac allograft vasculopathy (vs. CAV grades 0 or 1)	474	41	2.48	1.17-5.24	0.018
Cardiac allograft dysfunction (yes vs. no)	544	61	2.74	1.61-4.66	<0.001
History of ACR > 1R (vs. ACR grades 0R/1R)	530	61	1.56	0.88-2.76	0.130
Multipredictor analysis					
Cardiac allograft dysfunction	544	61	2.27	1.27-4.06	0.006
Medical nonadherence	544	61	1.93	1.09-3.39	0.023

Primary graft dysfunction	542	61	2.09	1.18-3.71	0.012
Recipient race and ethnicity	544	61	-	-	0.035

1

2

1 **Table 4.** Unipredictor and multipredictor Cox proportional hazards analyses for de novo
 2 donor-specific antibody positivity. Unipredictor parameters with a p-value ≤ 0.15 are
 3 included in addition to certain clinical parameters of interest. HRs and CIs are not
 4 provided for categorical variables in this table. ACR, acute cellular rejection; CI,
 5 confidence interval; CMV, cytomegalovirus; cPRA, calculated panel reactive antibodies;
 6 DSA, donor-specific antibodies; ECMO, extracorporeal membrane oxygenation; HTx,
 7 heart transplantation; HR, hazard ratio; MCS, mechanical circulatory support; pAMR,
 8 pathologic antibody mediated rejection; pMCS, percutaneous mechanical circulatory
 9 support; UNOS, United Network for Organ Sharing. *, allosensitized patients defined as
 10 having a UNOS cPRA $\geq 10\%$.

Predictor	No. of patients (n = 533)	Total # of events (n = 129)	HR	95% CI	p-value
Unipredictor analysis					
Recipient age (by 10-yr)	533	129	0.83	0.75-0.93	0.001
Recipient race and ethnicity (vs. non-Hispanic White)	533	129	-	-	0.127
Multiorgan transplant (yes vs. no)	533	129	1.61	1.04-2.52	0.035
HTx indication (vs. non-ischemic cardiomyopathy)	533	129	-	-	0.318
Allosensitization pre-HTx*	452	118	1.45	0.95-2.22	0.084
Blood type (vs. blood type O)	518	129	-	-	0.013
Durable MCS at time of HTx (yes vs. no)	532	129	0.83	0.57-1.19	0.310
Medical nonadherence (yes vs. no)	533	129	1.87	1.27-2.75	0.001
Donor age (by 10-yr)	511	127	0.89	0.76-1.05	0.159
Induction therapy (yes vs. no)	511	126	1.01	0.71-1.44	0.947
Cold ischemic time (per hour)	510	126	1.03	0.87-1.21	0.752
Donation after cardiac death (vs. brain death)	533	129	0.98	0.57-1.69	0.936

ECMO pre-HTx (yes vs. no)	530	127	2.34	0.86-6.35	0.095
pMCS pre-HTx (yes vs. no)	530	127	0.99	0.64-1.54	0.974
ECMO post-HTx (yes vs. no)	530	127	1.71	0.80-3.67	0.168
Primary graft dysfunction (yes vs. no)	531	129	1.75	1.14-2.68	0.010
CMV mismatch (vs. D-/R-)	523	129	-	-	0.535
Sex mismatch (vs. male D-male R)	510	127	-	-	0.701
History of ACR > 1R (vs. ACR grades 0R/1R)	520	129	0.56	0.31-1.02	0.058
Multipredictor analysis					
Recipient age	533	129	0.82	0.73-0.91	<0.001
Medical nonadherence	533	129	1.71	1.15-2.52	0.007
Primary graft dysfunction	531	129	1.67	1.13-2.48	0.010
Multiorgan transplant	533	129	1.49	0.95-2.33	0.084
History of ACR > 1R	520	129	0.60	0.33-1.10	0.098

1 **Table S1.** Baseline characteristics of heart transplant patients and outcomes for the
 2 total study cohort. ACR, acute cellular rejection; AMR, antibody mediated rejection; BMI,
 3 body mass index; CMV, cytomegalovirus; DCD, donation after cardiac death; DSA,
 4 donor-specific antibodies; HTx, heart transplantation; ICM, ischemic cardiomyopathy;
 5 ISHLT, International Society for Heart and Lung Transplantation; MCS, mechanical
 6 circulatory support; NICM, nonischemic cardiomyopathy; pAMR, pathologic antibody
 7 mediated rejection; PHM, predicted heart mass; PRA, panel reactive antibodies.

Characteristics	No. of patients (n = 544)	Study cohort
Donor characteristics		
Age, y, mean (SD)	520	32.8 (10.6)
Male, N (%)	519	428 (82.5)
Recipient characteristics		
Age, y, mean (SD)	544	53.9 (14.3)
Male, N (%)	544	436 (80.1)
Race		
Asian, N (%)	544	37 (6.8)
Black, N (%)	544	69 (12.7)
Native American, N (%)	544	4 (0.7)
Other Race, N (%)	544	35 (6.4)
Pacific Islander, N (%)	544	12 (2.2)
White, N (%)	544	387 (71.1)
Ethnicity		
Hispanic or Latino, N (%)	544	165 (30.3)
Recipient BMI, mean (SD)	521	26.5 (4.4)
Indication for HTx		
NICM, N (%)	544	325 (59.7)
ICM, N (%)	544	185 (34.0)
Congenital, N (%)	544	22 (4.0)
Cardiac allograft failure, N (%)	544	12 (2.2)

Allosensitization pre-HTx (PRA \geq 10%), N (%)	457	85 (18.6)
---	-----	-----------

Durable MCS, N (%)	543	188 (34.6)
--------------------	-----	------------

HTx characteristics

Multiorgan transplant, N (%)	544	76 (14.0)
------------------------------	-----	-----------

Cold ischemic time, min, mean (SD)	520	200.3 (64.0)
------------------------------------	-----	--------------

Sex mismatch (female D-male R), N (%)	519	42 (8.1)
---------------------------------------	-----	----------

PHM difference, % recipient PHM, mean (SD)	513	5.2 (20.9)
--	-----	------------

Induction therapy, N (%)	519	256 (49.3)
--------------------------	-----	------------

DCD, N (%)	544	82 (15.1)
------------	-----	-----------

CMV mismatch (D+/R-), N (%)	531	105 (19.8)
-----------------------------	-----	------------

HTx outcomes

Primary graft dysfunction	542	118 (21.8)
---------------------------	-----	------------

History of pAMR positivity	544	75 (13.8)
----------------------------	-----	-----------

pAMR1i	75	44 (58.7)
--------	----	-----------

pAMR1h	75	5 (6.7)
--------	----	---------

pAMR2	75	26 (34.7)
-------	----	-----------

Mixed ACR (ISHLT grade \geq 2R) and pAMR	75	8 (10.7)
--	----	----------

History of DSA positivity	544	140 (25.7)
---------------------------	-----	------------

De novo DSA	134	129 (96.3)
-------------	-----	------------

Class I de novo DSAs alone	129	23 (17.8)
----------------------------	-----	-----------

Class II de novo DSAs alone	129	75 (58.1)
-----------------------------	-----	-----------

Both class I and II de novo DSAs	129	31 (24.0)
----------------------------------	-----	-----------

Concurrent cardiac allograft vasculopathy with initial pAMR positivity	20	5 (25.0)
Concurrent cardiac allograft dysfunction with initial pAMR positivity	72	17 (23.6)

1

2

1 **Table S2.** Causes of death compared across pAMR/DSA groups. DSA, donor-specific
2 antibody; pAMR, pathologic antibody mediated rejection.

Outcomes	pAMR+/DSA+ (n = 45)	pAMR+/DSA- (n = 30)	pAMR-/DSA+ (n = 95)	pAMR-/DSA- (n = 374)	Total
All-cause mortality or cardiac retransplant (%)	13 (28.9)	4 (13.3)	6 (6.3)	38 (10.2)	61 (11.2)
Cardiovascular related death (%)	7 (15.6)	1 (3.3)	3 (3.2)	6 (1.6)	17 (3.1)
Infectious related mortality (%)	1 (2.2)	1 (3.3)	2 (2.1)	19 (5.1)	23 (4.2)
Cancer (%)	0	0	0	5 (1.3)	5 (0.9)
Other cause of death (%)	2 (4.4)	1 (3.3)	1 (1.1)	4 (1.1)	8 (1.5)
Unknown cause of death (%)	1 (2.2)	1 (3.3)	0	2 (0.5)	4 (0.7)

3

1 **Table S3.** Comparison of different de novo DSA patterns for diagnosis of pathologic
2 antibody mediated rejection. DSA, donor-specific antibody. 95% confidence intervals
3 are in parenthesis. #, reference is all other DSAs group.

De novo DSAs	Positive predictive value	p_c-value[#]	Odds ratio	p_c-value[#]
Both class I and II DSAs on initial DSA+ testing	64.2% (36.4%-88.9%)	0.031	6.44 (1.14-45.82)	0.016
Progression from one DSA to both class I and II DSAs	58.2% (28.6%-87.5%)	0.124	5.02 (0.81-35.88)	0.087
Two or more class II DSAs on initial DSA+ testing	52.9% (28.6%-77.3%)	0.103	4.05 (0.85-20.26)	0.087
All other DSAs	21.5% (12.9%-30.5%)	-	-	-

4

1 **Table S4.** Unipredictor and multipredictor Cox proportional hazards analyses for cardiac
 2 survival. Unipredictor parameters with a p-value ≤ 0.15 are included in addition to
 3 certain clinical parameters of interest. HRs and CIs are not provided for categorical
 4 variables in this table. ACR, acute cellular rejection; CI, confidence interval; cPRA,
 5 calculated panel reactive antibodies; DSA, donor-specific antibodies; ECMO,
 6 extracorporeal membrane oxygenation; HTx, heart transplantation; HR, hazard ratio;
 7 MCS, mechanical circulatory support; pAMR, pathologic antibody mediated rejection;
 8 PHM, predicted heart mass; pMCS, percutaneous mechanical circulatory support;
 9 UNOS, United Network for Organ Sharing. *, allosensitized patients defined as having a
 10 UNOS cPRA $\geq 10\%$.

Predictors	Total # of patients (n = 544)	Total # of events (n = 21)	HR	95% CI	p-value
Unipredictor analysis					
Recipient age (by 10-yr)	544	21	0.73	0.57-0.93	0.010
Recipient female sex (vs. recipient male sex)	544	21	1.48	0.57-3.82	0.423
Recipient race and ethnicity (vs. non-Hispanic White)	544	21	-	-	0.222
Multiorgan transplant (yes vs. no)	544	21	0.79	0.18-3.43	0.757
HTx indication (vs. non-ischemic cardiomyopathy)	544	21	-	-	0.661
Allosensitization pre-HTx*	457	16	1.19	0.38-3.68	0.769
Durable MCS at time of HTx (yes vs. no)	543	21	1.58	0.67-3.73	0.295
Medical nonadherence (yes vs. no)	544	21	4.15	1.75-9.82	0.001
Donor age (by 10-yr)	520	19	1.30	0.88-1.93	0.188
Induction therapy (yes vs. no)	519	19	1.22	0.48-3.13	0.675
Cold ischemic time (per hour)	519	19	0.84	0.53-1.33	0.454

PHM difference (per % recipient PHM increment)	513	19	1.00	0.98-1.02	0.839
Donation after cardiac death (vs. brain death)	544	21	2.84	0.55-14.65	0.212
Primary graft dysfunction (yes vs. no)	542	21	3.31	1.36-8.08	0.009
ECMO pre-HTx (yes vs. no)	540	20	3.96	0.53-29.88	0.182
pMCS pre-HTx (yes vs. no)	540	20	0.28	0.04-2.10	0.215
De novo DSAs (vs. no DSA)	533	20	3.40	1.41-8.22	0.007
Class I de novo DSAs alone (vs. no DSA)	533	20	-	-	0.997
Class II de novo DSAs alone (vs. no DSA)	533	20	2.66	0.89-7.97	0.080
Both class I and II de novo DSAs (vs. no DSA)	533	20	7.16	2.54-20.14	<0.001
Sex mismatch (female D-male R vs. male D-male R)	519	19	1.71	0.49-5.93	0.397
pAMR/DSA group (vs. pAMR-/DSA- group)	544	21	-	-	0.003
Cardiac allograft vasculopathy (vs. CAV grades 0 or 1)	474	19	5.31	2.08-13.58	<0.001
Cardiac allograft dysfunction (yes vs. no)	544	21	6.30	2.65-14.98	<0.001
History of ACR > 1R (vs. ACR grades 0R/1R)	530	21	3.21	1.35-7.62	0.008
Multipredictor analysis					
Cardiac allograft	544	21	5.68	1.87-17.19	0.002

dysfunction					
Recipient Age	544	21	1.85	1.06-3.23	0.029
Donor Age	520	19	1.64	1.02-2.63	0.040
Medical nonadherence	544	21	2.62	0.92-7.48	0.071
Primary graft dysfunction	542	21	2.42	0.86-6.82	0.094
Cardiac allograft vasculopathy	474	19	2.57	0.83-7.94	0.100