

According to the best knowledge of the authors, there are no thresholds available in the research literature for the MAD value of maximum 10-meter walking for this age group (75-85 years), based on which capacity can be classified as high or low. Therefore, in this study, the thresholds for 10-meter walking speed were determined separately for men and women. The determination was based on the Short Physical Performance Battery with cutoffs of 11-12 high and below 10 points low (Guralnik et al. 2000).

Receiver Operating Characteristics (ROC) analysis was performed to determine thresholds for 10-meter walking speed (Akobeng, 2007). The cut-points that best balanced the high sensitivity and high specificity of the test were calculated by finding the minimal value by using equation $(1 - \text{sensitivity})^2 + (1 - \text{specificity})^2$. The suitability of the test was evaluated by estimating the area under the curve (AUC). This value serves as a single measure that indicates the accuracy of the test: AUC 0.5 - 0.7 = low accuracy, AUC 0.7 - 0.9 = moderate accuracy, AUC > 0.9 = high accuracy (Akobeng, 2007).

For men, a cut-point of 0.73 G was determined with moderate accuracy (specificity 70%, sensitivity 66%, AUC 0.76), and similarly for women, the cut-point is 0.59 G (specificity 68%, sensitivity 76%, AUC 0.73) (Figure 1).

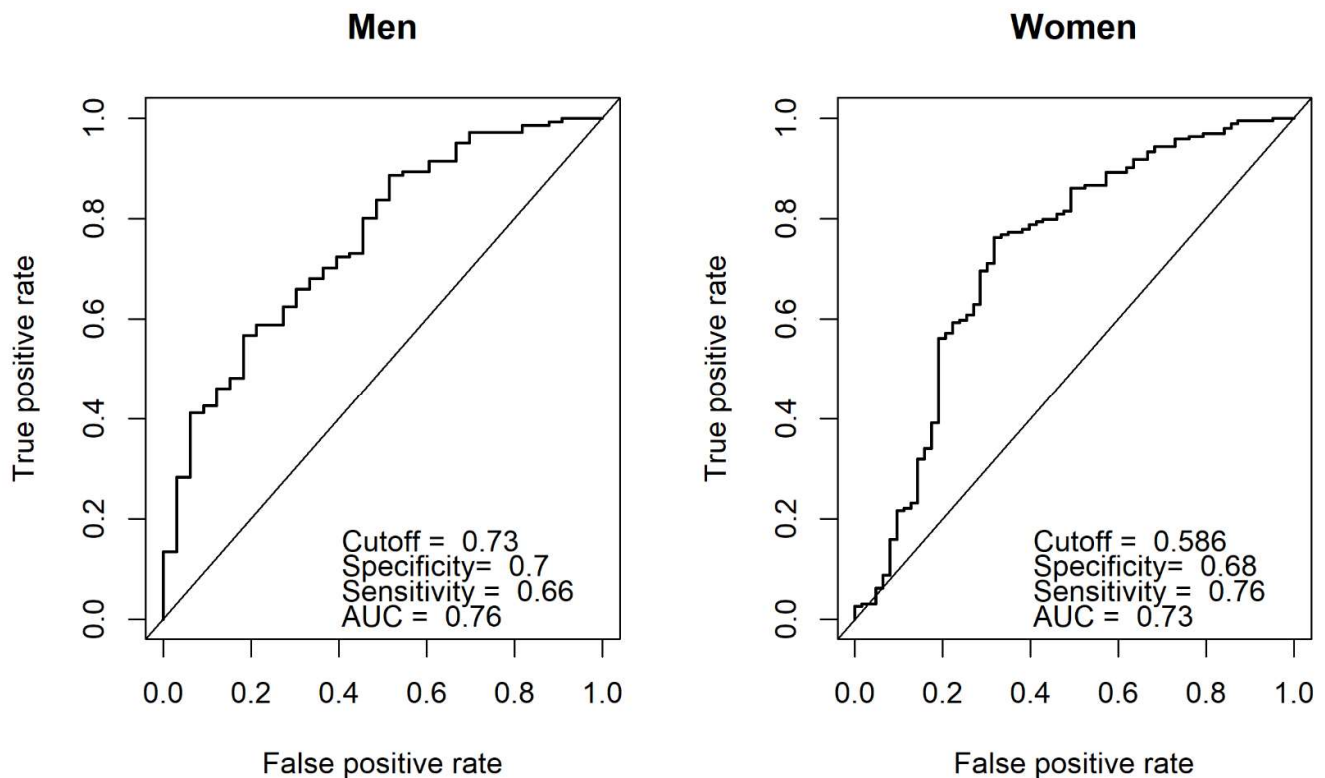


Figure 1.

References

Guralnik JM, Ferrucci L, Pieper CF, Leveille SG, Markides KS, Ostir GV, Studenski S, Berkman LF, Wallace RB. Lower extremity function and subsequent disability: consistency across studies, predictive models, and value of gait speed alone compared with the short physical performance battery. *J Gerontol A Biol Sci Med Sci.* 2000 Apr;55(4):M221-31. doi: 10.1093/gerona/55.4.m221. PMID: 10811152.

Akobeng, A. K. (2007). Understanding diagnostic tests 3: Receiver operating characteristic 3 curves. *Acta Paediatrica*, 96(5), 644-647