

1
2
3
4
5
6
7
8
9
10
11
12
13
14
15
16
17
18
19
20
21
22
23
24
25
26
27
28
29
30
31
32
33
34
35
36
37
38



**Consensus guidelines for eligibility assessment of pathogenic variants to antisense oligonucleotide treatments:
The N1C VARIANT Guidelines**

Disclaimer: This document is the work product of the N=1 Collaborative (the "N1C"). The N1C is not providing legal or regulatory advice for N=1 trials. This document should not be construed as legal or regulatory advice for any particular purpose. These guidelines focus on the evaluation of eligibility of a genetic variant for ASO treatment only. To assess a patient case for ASO amenability, the disease, phenotype, and patient have to also be considered, which is beyond the scope of these guidelines. The information is based on the best available knowledge and practice at the time of publication. The N1C reserves the right to update, modify, or withdraw these practices at any time without prior notice. Users of these documents should exercise their own judgment and discretion in applying these practices to their specific situations. These guidelines reflect a general way of evaluating variants, but there are many exceptions to the rules.

**The most up-to-date N1C VARIANT Guidelines and all accompanying training material and tools can be found on the N1C website:
<https://www.n1collaborative.org/post/n1c-variant-guidelines>**

Table of Contents

39		
40	Purpose.....	3
41	Background.....	5
42	Figure 1: Splice modulating mechanisms of ASOs for the restoration of a functional	
43	gene product.	5
44	Figure 2: RNA knockdown using ASOs.	6
45	Figure 3: Upregulation of wildtype allele transcript using ASOs.	8
46	Table 1: List of Key Terms.....	9
47	Further Resources.....	11
48	Variant Assessment.....	12
49	Table 2: Explanation of Variant Classification Terms.....	12
50	Figure 4: Overview of consensus guidelines document.....	14
51	Step 0 - Variant check	15
52	Step 1 - Assessment of pattern of inheritance and disease type	17
53	Step 2 - Assessment of pathomechanism of the genetic variant and haploinsufficiency.....	18
54	Step 3 - Evaluation of splicing effects	20
55	Figure 5: Eligible targets for splice correcting ASOs.....	22
56	Table 3: Classification of variants for their eligibility towards splice correction.	25
57	Step 4 - Identification of Relevant Guideline	27
58	Figure 6: Flowchart for the identification of relevant guidelines.	28
59	Section A - Considerations for Canonical Exon Skipping.....	29
60	Figure 7: Overview exon skipping assessment using a hypothetical transcript.....	29
61	Figure 8: Determining exon frames.	31
62	Figure 9: Formation of a new codon as a result of exon skipping.....	32
63	Table 4: Classification of variants for their eligibility towards exon skipping.	37
64	Section B - Considerations for Transcript Knockdown.....	39
65	Table 5: Classification of variant for their eligibility towards knockdown	41
66	Section C - Considerations for upregulation from the wildtype allele	43
67	Addendum.....	45
68	Examples	45
69	Table 6: Example variants and their assessments.....	45
70	Useful Tools	49
71	Abbreviations	51
72	References.....	52
73		

74 **Consensus guidelines for eligibility assessment of** 75 **pathogenic variants to antisense oligonucleotide treatments:** 76 **The N1C VARIANT guidelines**

77 **[v1.0 September 2024]**

78 (written by David Cheerie and Marlen Lauffer on behalf of the N1C Patient Identification Working
79 Group (PIWG))

80 **Purpose**

81 The N1C VARIANT (**V**ariant **A**ssessments towards **E**ligibility for **A**ntisense Oligonucleotide
82 **T**reatment) guidelines provide clinicians, geneticists, and researchers with a framework for
83 analyzing and classifying disease-causing variants for their amenability towards antisense
84 oligonucleotide (ASO) therapies. Specifically, these guidelines are meant to identify genetic
85 variants most likely to benefit from an ASO-based therapy and distinguish these variants from
86 currently less suitable candidates. With these guidelines, assessors should be able to:

- 87
- 88 1. Identify variants eligible for analysis by these guidelines and utilize publicly available
- 89 databases and resources to assist in the variant analysis process
- 90 2. Identify variants causing aberrant splicing and assess what type of splice-altering variants
- 91 can be targeted using ASOs
- 92 3. Assess whether a variant is eligible for treatment by exon skipping ASOs
- 93 4. Assess whether candidate genes and/or variants are eligible for siRNA or ASO-mediated
- 94 transcript knockdown
- 95 5. Classify variants as either “eligible”, “likely eligible”, “unlikely eligible”, “not eligible”, or
- 96 “unable to assess” towards each of splice correction, exon skipping, or transcript
- 97 knockdown approaches. The definition of each classified variant is dependent on the type
- 98 of RNA therapy and is further described in each respective section
- 99 6. Consider strategies for upregulation of wildtype alleles in cases of haploinsufficiency

100 To follow these guidelines, readers should have an understanding of foundational genetic
101 concepts including, but not limited to, splicing, introns and exons, coding versus non-coding, and
102 DNA variant types (nonsense/stop gain, missense, indels, frameshifts, etc.). While these
103 guidelines will remind assessors of key definitions (canonical splice site, cryptic splice site, etc.),
104 these concepts will not be explained in detail. Assessors should also be familiar with standard
105 variant annotations and pathogenicity classification approaches, including preferably the ACMG-
106 AMP guidelines (Richards et al., 2015).

107 These guidelines focus on the evaluation of eligibility of a pathogenic genetic variant for ASO
108 treatment. To assess a person’s eligibility for ASO treatment, disease- and individual-specific
109 clinical factors have to also be taken into account, which is beyond the scope of these guidelines
110 (Lauffer, van Roon-Mom, Aartsma-Rus, & N = 1 Collaborative, 2024). In some instances, the
111 guidelines do refer to the gene and disease as a necessity for assessment, and this will be pointed
112 out specifically in the respective sections.

113

114 The guidelines were prepared to the best of our current knowledge and are subject to change,
115 with new knowledge on the topic being generated continuously. These guidelines reflect a general
116 way of evaluating variants, but there are many exceptions to this. Where necessary, we have
117 mentioned relevant exceptions within the text or as footnotes. This also means a variant's
118 classification can change over time and it might thus be useful to re-assess variants at a later
119 stage. Classifications are made for a variant's eligibility towards a specific ASO strategy. For
120 example, a variant might be classified as "not eligible" for splice correction, while also being
121 classified as "likely eligible" for a transcript knockdown.

122
123 We recommend only assessing disease-causing variants classified as likely pathogenic and
124 pathogenic according to the ACMG-AMP guidelines (Richards et al., 2015).

125
126 For the assessments, all recommendations on suitable tools, websites, and databases to aid in
127 the process are limited to publicly available resources, but, of course, other licensed resources
128 can also be used at an individual's discretion. Instructions on how to use the recommended tools
129 and websites are beyond the scope of these guidelines. Assessors are encouraged to familiarize
130 themselves with the tools by utilizing the respective tools' "help" pages or corresponding research
131 articles.

132 **Structure of guidelines**

133 These guidelines serve as an aid for assessing a given disease-causing variant and are not meant
134 to be read as a whole. Instead, only specific sections need to be read for each assessment. The
135 guideline will first provide the assessor with a background on ASO/siRNA therapies. The
136 guidelines are then divided into 4 steps. Steps 0-2 are necessary to collect information, such as
137 the inheritance pattern or pathomechanism of disease, relevant to each assessment and to decide
138 on the required therapeutic approach. Step 3 is further relevant for each variant assessment and
139 focuses on splicing evaluation, whereas Step 4 provides an overview ([Fig. 6](#)) to guide you to
140 relevant sections of the guideline for specific assessments depending on the information gained
141 in Steps 0-3. A quick overview of the structure can be seen in [Fig. 4](#).

142
143
144 Sections A-C can then be read independently and the section matching the variant under
145 assessment can be selected. Within the guidelines, assessors will be provided with the possibility
146 to jump between sections via hyperlinks.

147
148 At the end of each section, we have formulated important considerations for each assessment.
149 To support the understanding of the guidelines and their use, we have generated several [example](#)
150 assessments and matching training videos as well as a "[Variant Eligibility Calculator](#)" that guides
151 through the different steps and sections. The calculator will also aid in identifying the next possible
152 assessment step if a variant is "not eligible" towards one of the strategies.

153
154
155

156 Background

157 ASOs are short, synthetic, single-stranded oligonucleotides that can bind RNA via Watson-Crick
158 base pairing. ASOs can modify protein expression through various mechanisms (Dhuri et al.,
159 2020, Rinaldi & Wood, 2017).

160

161 Splice Modulation

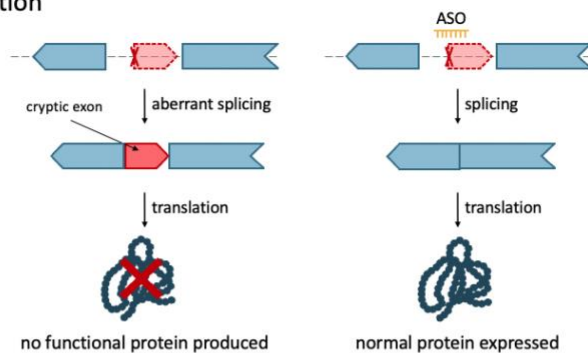
162 The binding of ASOs to splice sites or splice-regulatory elements on the pre-mRNA transcript
163 allows for manipulation of the splicing process, which can lead to (canonical) exon skipping or the
164 restoration of wildtype splicing.

165

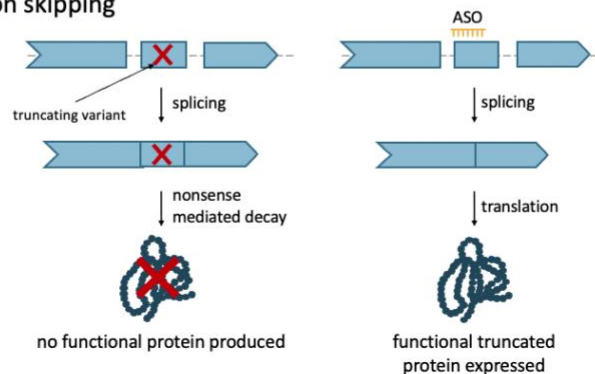
166 ASOs can be used to restore wildtype splicing in individuals whose mechanism of pathogenicity
167 is caused by the activation or creation of cryptic (non-canonical) splice sites, resulting in aberrant
168 splicing of the transcript (Fig. 1A) and, for example, the inclusion of parts of the intron then termed
169 cryptic or pseudoexon. Additionally, canonical exon skipping ASOs can be used to “skip” exons
170 containing the pathogenic variant, to produce a truncated, yet functional, protein product (Fig. 1B)
171 in the case of loss-of-function (LoF) variants. For gain-of-function (GoF) variants, exon skipping
172 can also be applicable, but there is no requirement to generate a functional protein product.

173

A) Splice correction



B) Canonical exon skipping



193 **Figure 1: Splice modulating mechanisms of ASOs for the restoration of a functional gene**
194 **product.**

195 **A)** ASOs can be used to skip a cryptic exon caused by deep-intronic pathogenic variants to restore
196 canonical splicing. **B)** ASOs can be used to skip an in-frame canonical exon containing a
197 truncating variant to produce a truncated yet functional gene product.

198

199 In rare circumstances, certain variants, like single nucleotide polymorphisms (SNPs) or
200 pathogenic variants, lead to skipping of an exon and subsequently decreased production of
201 protein-coding transcripts. It is possible to develop ASOs that will lead to exon inclusion, however,
202 the development of such efforts is challenging (Singh, Lee, DiDonato, & Singh, 2015).

203

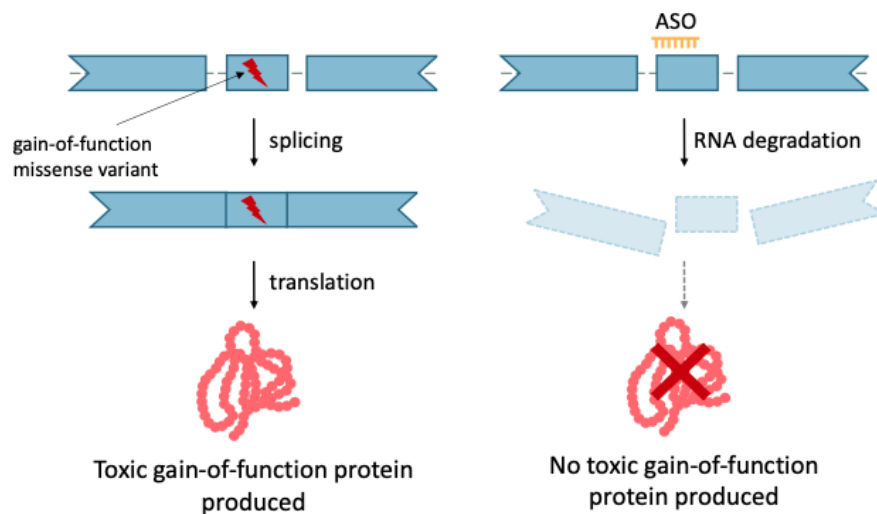
204 **Transcript Knockdown**

205 In addition to splice modulation, oligonucleotides can bind to the target transcript and
206 downregulate (pre-)mRNA expression (i.e., knockdown ASOs). Knockdown can be achieved with
207 gapmer ASOs and small interfering RNAs (siRNAs). Gapmer ASOs trigger RNase H-mediated
208 cleavage (Fig. 2), while siRNAs trigger the endogenous RNA interference pathway. Both
209 mechanisms can be utilized in cases where the pathomechanism is a result of overexpression,
210 toxic GoF, or dominant-negative (DN) effects (Lauffer, van Roon-Mom, Aartsma-Rus, & N = 1
211 Collaborative, 2024).

212

213

214



225

226

227

228 **Figure 2: RNA knockdown using ASOs.**

229 ASOs can be used to knockdown RNA transcripts which carry variants leading to a toxic GoF
230 protein (shown here), proteins with a DN effect, or overexpressed proteins.

231

232 **Increased protein from wildtype transcript**

233 Furthermore, one can consider upregulation from the WT allele, such as targeted augmentation
234 of nuclear gene output (TANGO), as described in Lim et al., 2020, Mittal et al., 2022, Felker et al.,
235 2023, and Liu et al., 2022 (Fig. 3). For disorders caused by haploinsufficiency, one wildtype allele
236 remains intact and functional. ASOs can be utilized to upregulate the gene product from the
237 wildtype allele with the goal of restoring proper gene and cell function.

238

239 One such approach includes the targeting of poison exons. Poison exons are naturally occurring,
240 highly conserved alternatively spliced exons that result in premature termination when included
241 in the transcript. An ASO can be designed to skip poison exons and increase the number of
242 productive/protein-coding transcripts, with the goal of increasing protein levels (Fig. 3A).

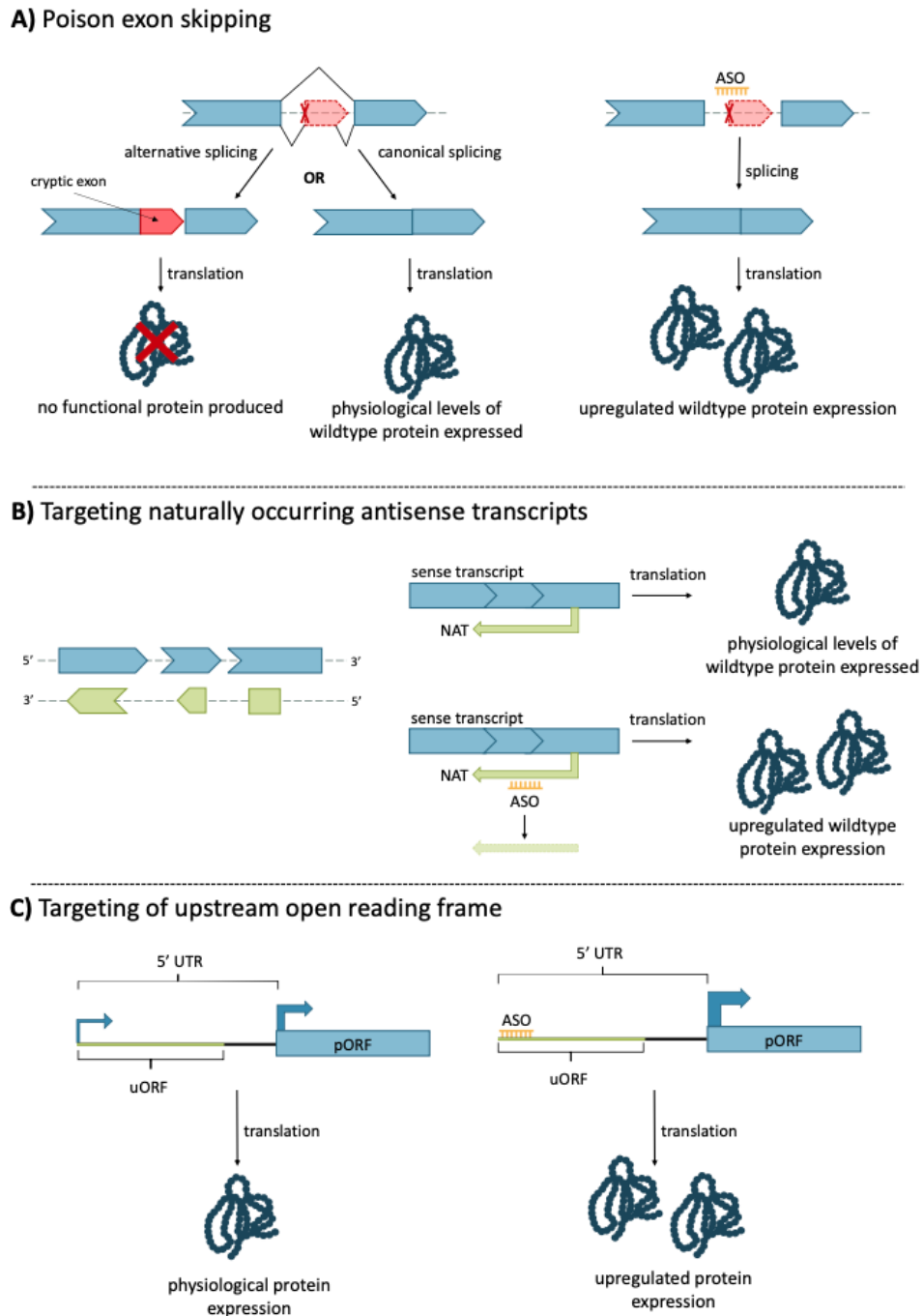
243
244
245
246
247
248
249
250
251
252
253
254
255
256
257
258
259
260
261
262
263
264
265
266
267
268
269
270
271
272
273
274
275
276
277
278
279
280
281
282
283
284
285
286
287
288

Additionally, ASOs can be designed to target naturally occurring antisense transcripts which are non-coding RNAs that can act on one or more corresponding transcripts with diverse roles, including RNA interference and RNA masking (Khorkova et al., 2022). In such cases, targeting antisense transcripts using ASOs can upregulate transcript levels ([Fig. 3B](#)).

Lastly, one can target untranslated regions (UTRs) to upregulate or stabilize productive transcripts (Liang et al., 2017; Sasaki et al., 2019). One possible method is the targeting of the upstream open reading frames (uORF). These are alternative reading frames that occur upstream (5') from the canonical reading frame (primary ORF, pORF). These reading frames may code for proteins, but can also downregulate the reading of the canonical reading frame. ASOs targeting the uORF can be used to upregulate transcripts from the canonical reading frame. This can either be done by blocking the uORF or by skipping the exon containing the uORF. A related method is the targeting of the 3' UTR. By using ASOs to interfere with degrading complexes, one can attempt to increase RNA half-life and increase gene product ([Fig. 3C](#)).

Overall, the upregulation of wildtype gene products is a possible approach for disorders caused by haploinsufficiency.

289
 290
 291
 292
 293
 294
 295
 296
 297
 298
 299
 300
 301
 302
 303
 304
 305
 306
 307
 308
 309
 310
 311
 312
 313
 314
 315
 316
 317
 318
 319
 320
 321
 322
 323
 324
 325



326 **Figure 3: Upregulation of wildtype allele transcript using ASOs.**

327 **A)** An ASO can be used to skip a poison exon in a transcript that would usually lead to nonsense-
 328 mediated decay, increasing wildtype transcript levels and subsequent gene product. **B)** ASOs can
 329 target NATs which negatively impact transcription of the sense transcript. By disrupting NAT
 330 transcription, the wildtype transcript can be increased. **C)** Targeting uORFs with an ASO can be
 331 used to promote translation of the pORF (primary open reading frame), increasing wildtype gene
 332 product.

333 ASOs offer a potential avenue for the treatment of rare genetic diseases, although this is currently
 334 mainly focused on disorders impacting the central nervous system (brain, spinal cord, retina), or
 335 liver, due to restricted delivery options. FDA- and EMA-approved ASO therapies include, for
 336 example, nusinersen for spinal muscular atrophy (Egli & Manoharan, 2023). The use of ASOs to
 337 develop variant-specific therapies has, for example, been demonstrated through milasen, an ASO
 338 developed at Boston Children’s Hospital, to target a deep intronic *MFSD8* variant resulting in
 339 cryptic splicing (Kim et al., 2019).

340
 341 To better understand the concepts and guidelines shared in this document, it is important to
 342 familiarize yourself with the key terms outlined in [Table 1](#).
 343

344 **Table 1: List of Key Terms**

Term	Definition
Branchpoint	<i>cis</i> -acting intronic motif (specific intronic sequence on the same chromosome) required for pre-mRNA splicing, usually an A (adenosine) located 18-40 nucleotides upstream of the acceptor splice site.
Canonical Acceptor Site	RNA sequence recognized by the spliceosome flanking the 3’ end of an intron, usually an AU sequence.
Canonical Donor Site	RNA sequence recognized by the spliceosome flanking the 5’ end of an intron, usually a GU sequence.
Canonical Splicing	Splicing involving the use of the canonical acceptor and donor sites (see definitions for canonical acceptor site and canonical donor site).
Cryptic Splicing	Cryptic splice sites are naturally occurring splice sites within the genome that are used infrequently. Splicing involving cryptic splice sites, i.e., cryptic splicing, often leads to the incorporation of parts of an intron into the mRNA transcript (cryptic exon or pseudoexon) or the removal of parts of an exon ultimately leading to an early translation stop. Pathogenic variants causing aberrant splicing can for example activate, strengthen, or create a cryptic splice site and thus cause disease.
DNA Tandem Repeats	Short lengths of DNA repeated multiple times within a gene, e.g. CAG repeats in PolyQ disorders.

Hypomorphic Allele	Alleles that show partial loss of function. Sometimes referred to as “leaky” alleles because there is some retention of protein function.
In-Frame Exon	Exon in which the number of base pairs is divisible by 3. Since each amino acid is encoded in one codon made up of three base pairs, removing an exon that is a multiple of 3 will not disrupt the reading frame. While an exon can be divisible by 3, it does not mean that it starts with the first nucleotide of a codon and ends with the last nucleotide of a codon. The exon boundaries and codon boundaries do not necessarily align. See the “Assessing Exon Position and Frame” section in this document.
MANE Select	Matched Annotation from NCBI and EMBL-EBI (MANE): “The MANE Select set consists of one transcript at each protein-coding locus across the genome that is representative of biology at that locus. This set is useful as a universal standard for clinical reporting, as a default for display on browsers and key genomic resources, and as a starting point for comparative or evolutionary genomics. MANE Select transcripts are identified using computational methods complemented by manual review and discussion.” (Morales et al., 2022).
Naturally Occurring Antisense Transcript	Noncoding antisense transcripts that can act on one or more corresponding transcripts with diverse roles, including RNA interference and RNA masking.
Out-of-frame Exon	Exon in which the number of base pairs is not divisible by 3. Please see “in-frame exon” for further explanation on exon frames.
Poison Exon	Naturally occurring, highly conserved alternatively spliced exons which result in premature termination when included in the transcript, either as a result of frameshift or the inclusion of a premature stop codon
Protein Tandem Repeat Domain	Two or more domains from the same family found in tandem, e.g. spectrin-like repeats in the dystrophin protein

Splicing	A step in the processing of mature mRNA in which introns (non-coding sequences) are removed or “spliced out” of the pre-mRNA transcript, and the remaining exons (coding sequences) are connected to one another forming the mRNA.
Splicing Enhancer Site (SE)	RNA sequence motif found in the exon/intron of genes, binds proteins that help recruit splicing machinery to the correct site, directing or enhancing accurate splicing.
Splicing Silencer Site (SS)	RNA sequence motif found in the exon/intron of genes, binds proteins that negatively affect the core splicing machinery, inhibiting or silencing the inclusion of an exon into the mRNA.
Upstream Open Reading Frame	Alternative reading frames that occur upstream (5') from the canonical reading frame.

345 Further Resources

346 For further resources on the mechanisms and use of ASOs for genetic disorders, please see the
347 below recommendations. Note: these additional resources are not required but are encouraged
348 for those who are not familiar with ASO technology.

349 Educational videos

351 Treating Disease at the RNA Level with Oligonucleotides:

352 <https://www.youtube.com/watch?v=nRHypCupg0A>

353
354 Modifying RNA splicing with Morpholino Oligos by Gene Tools:

355 https://www.youtube.com/watch?v=gu-Kz0HaLxw&ab_channel=GeneTools

356 Overview articles

358
359 Lauffer et al., *Possibilities and limitations of antisense oligonucleotide therapies for the treatment*
360 *of monogenic disorders* (10.1038/s43856-023-00419-1) Communications Medicine

361
362 Hammond et al., *Delivery of oligonucleotide-based therapeutics: challenges and opportunities*
363 (10.15252/emmm.202013243) EMBO Molecular Medicine

364
365
366

367 Variant Assessment

368 The variant assessment is divided into different steps (please also see flow diagram [Fig. 4](#)).

369 [Step 0](#) - Variant check

370 [Step 1](#) - Assessment of pattern of inheritance and disease type

371 [Step 2](#) - Assessment of pathomechanism of genetic variant and haploinsufficiency

372 [Step 3](#) - Evaluation of splicing effects

373 [Step 4](#) - Identification of relevant guideline

374 [Section A](#) - Considerations for Canonical Exon Skipping

375 [Section B](#) - Considerations for Transcript Knockdown

376 [Section C](#) - Considerations for upregulation from the wildtype allele

377

378 For the assessment of a variant for ASO eligibility, different types of information need to be
379 gathered to decide on suitable ASO strategies and assess a variant using the specific sections
380 (sub-guidelines). To decide on the most suitable guideline for each variant, it is first necessary to
381 check whether the variant can generally be assessed with these guidelines and whether the
382 variant description is correct ([Step 0](#)), what the inheritance pattern of the variant and the disorders
383 the gene is associated with are ([Step 1](#)), what the pathomechanism of the variant is ([Step 2](#)), and
384 whether a variant is influencing splicing ([Step 3](#)). With this information at hand, the assessor can
385 decide on possible ASO strategies and read up on the specific sections of the guidelines ([Step 4](#))
386 that will focus on strategies like exon skipping and knockdown approaches.

387

388 These guidelines are not meant to be read as a whole, but using the information gathered in Steps
389 1-3, the flow diagram in [Fig. 4](#), and the detailed diagram in [Step 4 \(Fig. 6\)](#) will guide the assessor
390 to the relevant sections. An exception is [Step 3](#) which not only checks for influence on splicing
391 but in case of effects on splicing already allows the assessor to classify the variant with respect
392 to splice correction ASOs.

393

394 We further provide some notable exceptions and special cases as footnotes. These are cases
395 that apply rarely but were added for the assessors to gain a comprehensive understanding of the
396 assessment process.

397

398 Variants will be classified as “eligible”, “likely eligible”, “unlikely eligible”, “not eligible”, or “unable
399 to assess” towards a specific approach ([Table 2](#)) using these guidelines with the exception of
400 upregulation from the wildtype allele ([Section C](#)), where no such classification is possible.

401

402 **Table 2: Explanation of Variant Classification Terms**

Classification	Explanation
Eligible	Variants are considered eligible when functional evidence supports the effectiveness of an ASO approach. What type of functional evidence is deemed sufficient depends on the approach and is defined within the different sections below.

Likely eligible	Variants are considered likely eligible variants when the variant could potentially be targeted by an ASO, although no functional evidence is currently available to confirm this. That means a variant meets all criteria relevant for ASO development on paper.
Unlikely eligible	Variants are considered unlikely eligible variants when the molecular criteria suggest an ASO is, with our current understanding, unlikely to be effective, but no functional evidence directly contradicts the potential use of an ASO.
Not eligible	Variants are considered not eligible when an ASO approach will not work. This can be the case if the genetics do not allow for an ASO correction or an ASO cannot be designed. It could also be that there is evidence that demonstrates an ASO approach will not work. For example, exon skipping leads to a non-functional protein.
Unable to assess	All variants that currently cannot be assessed with these guidelines. This can be due to the variant not being applicable to these guidelines or that not enough information is available on a variant that allows for it to be assessed.

403
404
405
406
407
408
409
410
411
412
413
414
415
416
417
418
419
420
421
422

Please note that variants can be applicable and assessed for different approaches and while a variant might be “unlikely eligible” for splice correction, it could for example still be “(likely) eligible” for exon skipping.

The guidelines are also provided with a set of [example](#) variant assessments found at the end of this document. Videos accompanying the example assessments walk the assessors through the assessments to aid with training. Assessors can further use the test variants that were assessed during the consenting process for further practice. All test variants can be found in Suppl. File 2 and answer keys are provided in Suppl. File 3.

We have developed the N1C Variant Eligibility Calculator (<https://eligibilitycalculator.n1collaborative.org/>) - a type of interactive decision tree - that guides the assessor through the assessments and helps with identifying the most suitable section and provides the classifications after answering a set of questions. The calculator additionally provides a printout of the assessment process with displaying information collected during the assessment and the overall classification of the variant.

423
424
425
426
427
428
429
430
431
432
433
434
435
436
437

438
439
440
441
442
443
444
445
446
447
448
449

450

451

452

453
454
455
456
457
458
459
460
461

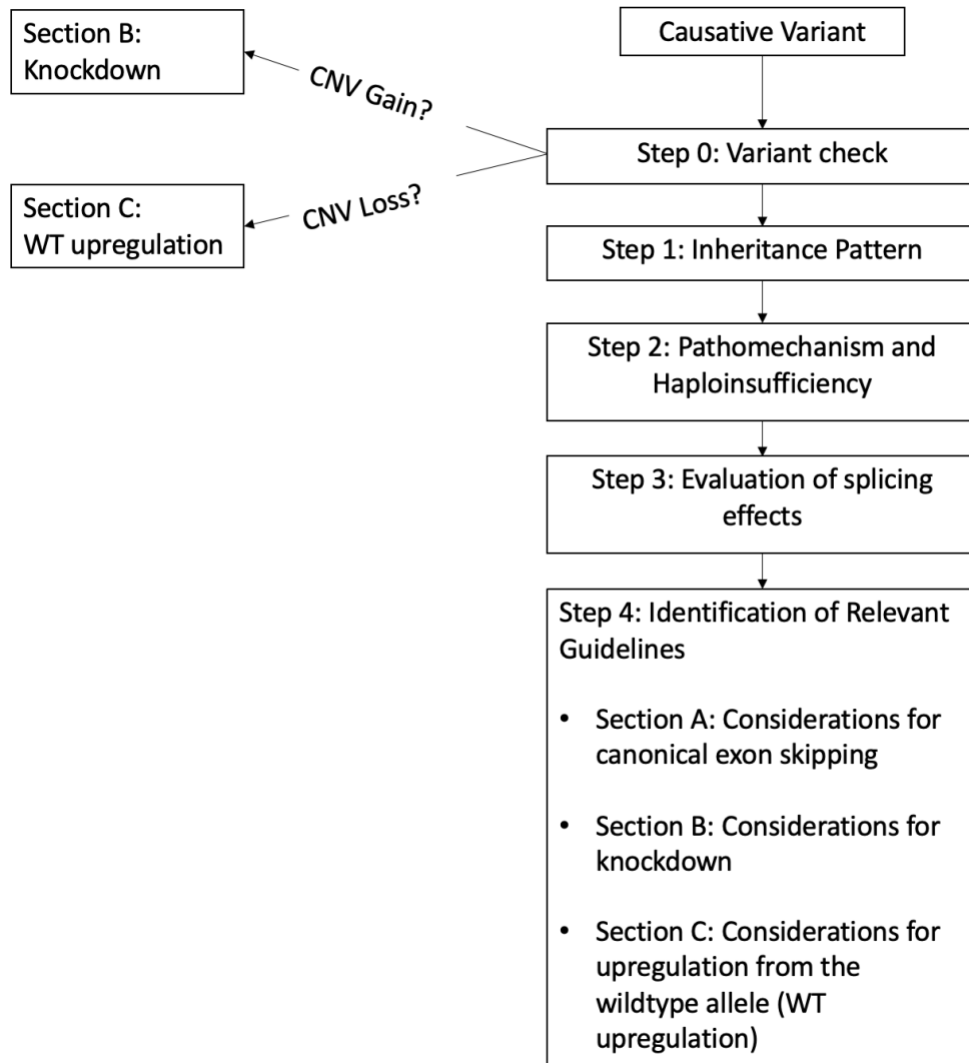


Figure 4: Overview of consensus guidelines document.

The guidelines begin with Step 0, 1, and 2, which highlight the assessment of the variant description, inheritance pattern, and pathomechanisms of the variant. When applicable, the evaluation of splicing effects is considered in Step 3. Dependent on the information gathered in Steps 0-3, readers are directed to Sections A, B, or C. The document is designed in a way in which assessors are directed to relevant sections, and are not required to read the entire document for assessment of a variant.

462 Step 0 - Variant check

463 In this step, the assessor will learn which type of genetic variant can be assessed using these
464 guidelines, and how to ensure that the variant description provided is correct. Without the correct
465 variant description, an assessment is not possible.

466
467 Variants applicable to these guidelines are restricted to (likely) pathogenic, disease-causing single
468 nucleotide variants, small indels, one or multi-exon deletions or duplications, and single gene
469 deletions or duplications. Currently excluded are variants in non-coding genes,
470 deletions/duplications spanning multiple genes (i.e., contiguous gene syndromes), imprinting
471 defects/uniparental disomy, structural rearrangements (e.g., translocations), and aneuploidies.
472 Additionally, mitochondrial DNA disorders (i.e., variants in the mitochondrial genome) cannot be
473 evaluated with these guidelines. All variants that cannot be evaluated will be classified as “unable
474 to assess”. Insertions within coding regions are mostly not applicable unless confined within an
475 exon that can be skipped; insertions in introns can be applicable, one example being milasen
476 (Kim et al., 2019). Repeat expansion disorders can also be assessed using these guidelines but
477 the pathomechanism should be well understood to evaluate for knockdown approaches or exon
478 skipping approaches.

479
480 Before starting to assess a variant, it is important to check the accuracy of the variant description.
481 That means, is the gene symbol correct, does the transcript match the variant and is the
482 consequence on protein level denoted accurately? If the variant description is incorrect, the
483 variant should be classified as “unable to assess” and the description be corrected and verified.
484 These guidelines work with the MANE select transcript but apply to any other transcript also.
485 Choosing a different transcript when it has more biological relevance in a given disease context
486 is preferred.¹

487
488 To check a variant and its description, please follow the [HGVS nomenclature](#). Correct variant
489 description and matching of gene and transcript can be checked with [Mutalyzer](#) and
490 [VariantValidator](#). Note, Mutalyzer cannot normalize intronic variants given for a non-genomic
491 reference sequence, i.e., an NM accession number. [Examples](#) of variants and their descriptions
492 are provided at the end of these guidelines.

493 494 **Considerations for Single Gene Copy Number Variants (CNVs)**

495 For the gain or loss of whole genes, special considerations apply. For the gain of a whole gene,
496 knockdown strategies should be considered (see [Section B](#)). For the loss of a gene with one
497 functional wildtype copy left, upregulation from the allele should be considered (see [Section C](#)).
498 ASO strategies cannot be applied when no copies of the gene are present, i.e., loss of both gene
499 copies or loss of one gene copy for hemizygous genes.

500
501
502

¹ In some instances, variants that are deep intronic in the MANE select transcript are exonic in another transcript and are disease-causing due to the effect they have in that exon. Please pay attention to this exception when evaluating the functional consequences of a variant.

503 **Optional ASO Check After a Variant Check**

504 To save time for assessors familiar with these guidelines, we recommend checking whether there
505 has already been an ASO/siRNA developed for the variant in question (clinically or pre-clinically)
506 immediately after checking the correct variant description. This can mean that an ASO has been
507 developed for the specific variant, e.g., a splice correction ASO or a gapmer ASO, or an ASO has
508 been developed for an exon skipping approach for an exon this variant is located in. It can also
509 be that a gapmer ASO/siRNA is available for the gene in question or allele-specific for a SNP that
510 is in phase with the pathogenic variant. When doing this ASO-availability check, it should be
511 ensured that the ASO strategy identified also applies to the variant under assessment. If in doubt,
512 we strongly suggest following the full guidelines and at the end checking for available ASOs.
513 Generally, if an ASO has been developed, it should be carefully evaluated whether there is
514 enough functional evidence that the ASO development was successful. That means, for example,
515 demonstrating restoration of protein levels or rescue of a cellular phenotype. In cases where there
516 is enough functional evidence, the variant can be classified as “eligible”, and no further evaluation
517 is necessary^{2,3}. To investigate whether an ASO has already been developed, we recommend a
518 thorough search using [ClinVar](#), [Pubmed](#), [Google Scholar](#), and web search, also paying attention
519 to conference abstracts if available. Further, ASO registries are available (e.g. [n-Lorem](#)) that can
520 be accessed to identify available ASOs. We also consider it sufficient if there is an ASO/siRNA
521 already in clinical implementation, even if there is not yet published data available. That means if
522 an ASO is available in the registries and has already been administered to one or more
523 individuals, this is sufficient to classify the variant under assessment as “eligible”.

524
525
526
527
528
529
530
531
532
533

² Please note that if publications are available that test ASOs for a specific variant/exon/gene, one has to carefully read whether the ASO design and development was indeed successful. It could be that ASOs were designed but the transcript or protein level could not be restored. Now it depends whether it might not be possible at all to, for example, skip a canonical exon, or whether another ASO design approach might still be justifiable. Depending on the assessment, that might lead to a “not” for eligibility or a “likely/unlikely” following the guidelines. We generally recommend that at least two independent groups with sufficient functional evidence should have shown that ASO development is not possible to declare a variant “not eligible”.

³ In the case of an allele-specific ASO development, please check whether the ASO was developed for the specific variant or for a SNP. For the latter, only if the patient has that exact SNP in phase with the pathogenic variant would that ASO be applicable for that patient. If this is not the case, proceed with the next steps of the assessment.

534 Step 1 - Assessment of pattern of inheritance and 535 disease type

536 In this step, assessors will identify the pattern of inheritance of the variant under assessment and
537 the disorders implicated in the disease gene. Understanding the inheritance pattern of the variant
538 and the diseases associated with a gene is crucial to later decide on the most suitable ASO
539 strategy and thus the section to use for the assessment. Different considerations will apply
540 depending on the inheritance pattern.

541
542 The assessor has to identify if the variant is inherited in an autosomal dominant (AD), autosomal
543 recessive (AR), or X-linked manner. Usually, in the case of an (autosomal) recessive inheritance,
544 the variant is either being reported as homozygous or a second variant in trans has been identified
545 (i.e., compound heterozygous), making this step of the assessment straightforward. In the case
546 of X-linked disorders in XY males, the variant will be hemizygous. For (autosomal) dominant
547 inheritance, one variant should be reported either *de novo* or inherited from one of the parents.
548 Should the respective information not be available (e.g., the phase of two variants in an autosomal
549 recessive disease gene), some other steps can be taken to gather the necessary knowledge.

550 The following websites can be used to identify the inheritance pattern of a disease:

551 OMIM <https://www.omim.org/>

552 Orphanet <https://www.orpha.net/consor/cgi-bin/index.php>

553 GeneReviews <https://www.ncbi.nlm.nih.gov/books/NBK1116/>

554 Pubmed <https://pubmed.ncbi.nlm.nih.gov/>

555 ClinGen <https://www.clinicalgenome.org/>

556
557 Some genes are implicated in different diseases which can, for example, have an autosomal
558 dominant and recessive pattern of inheritance respectively. In such instances, it is important to
559 identify which pattern of inheritance applies to the specific case. A web search on the variant can
560 be useful. The variant may have been reported in a publication where a pattern of inheritance is
561 noted. Also, [gnomAD](#) can be of help. The population frequency of a variant can indicate if the
562 variant is associated with a dominant or recessive inheritance. For example, if a LoF variant has
563 a high allele frequency for heterozygotes but no homozygotes are reported, the variant is more
564 likely to be associated with an AR pattern of inheritance. Similarly, for X-linked disorders in XY
565 males, a lack of hemizygotes would be the equivalent assessment. Further, checking with the
566 diagnostic laboratory or the treating clinician and reviewing the family history can be useful to
567 gather more information on the inheritance pattern in that specific case.

568
569 Should the gene be implicated in different diseases with distinct inheritance patterns, we
570 recommend noting this down as this can help with later steps of the assessment. For example, a
571 gene associated with an AD disorder caused by heterozygous GoF variants and also associated
572 with an AR disorder caused by LoF variants implies that targeting the GoF variants with a
573 knockdown approach is possible but loss of too much of the gene product will also be detrimental.

574 Step 2 - Assessment of pathomechanism of the 575 genetic variant and haploinsufficiency

576 In this step, assessors will identify the pathomechanism of the variant and assess whether the
577 gene in question is associated with haploinsufficiency. The pathomechanism is relevant to decide
578 on the most applicable ASO strategy and with this, the sub-guidelines to use for the assessment.
579 Identifying whether a gene is associated with haploinsufficiency is crucial to deciding whether
580 ASO approaches need to be allele-specific and whether the assessors should consider the
581 guidelines on upregulation from the wildtype allele (see [Section C](#)).

582
583 A pathogenic variant can lead to different effects. The variant can lead to a loss of function of a
584 protein (LoF), toxic gain of function (GoF), or dominant-negative (DN) effect. For an explanation
585 of the different pathomechanisms, please see, e.g., Backwell & Marsh, 2022.

586
587 Assessing the variant effect can mostly be done by conducting a web search and reading up on
588 publications and reports of the variant. Resources that can help in identifying the pathomechanism
589 associated with a variant are:

590 OMIM <https://www.omim.org/>

591 Orphanet <https://www.orpha.net/consor/cgi-bin/index.php>

592 GeneReviews <https://www.ncbi.nlm.nih.gov/books/NBK1116/>

593 Pubmed <https://pubmed.ncbi.nlm.nih.gov/>

594

595 Note that for many variants, no functional studies have yet been performed, especially if the
596 variants are very rare. Thus, we list here some considerations on how to define the
597 pathomechanism:

- 598 - Variants with a predicted LoF effect like nonsense and frameshift variants can be assumed
599 in many clinical contexts to result in a null allele in the absence of functional studies (Abou
600 Tayoun et al., 2018). Note that exceptions apply. For example, nonsense or frameshift
601 variants leading to a premature stop codon in the last exon or within 50 bp of 3' end of the
602 penultimate exons may not necessarily lead to loss-of-function. In this case, assessors
603 should take into consideration protein domains and presence of downstream (likely)
604 pathogenic variants (Abou Tayour et al., 2018). In a disease that has only been associated
605 with LoF variants, a newly reported likely pathogenic or pathogenic missense variant may
606 be LoF, especially if this variant is in trans with a known pathogenic LoF variant (for
607 recessive diseases).⁴
- 608 - For genes where both LoF and GoF are a known cause of disease, assessing the
609 pathomechanism of a missense variant is challenging. Here, it will become important to
610 take the phenotype and inheritance pattern of the variant into account to make a decision
611 on the pathomechanism of the variant. It can, for example, be possible to predict a
612 pathomechanism in cases where LoF and GoF variants lead to distinguishable

⁴ We recommend restricting these assumptions to AR diseases because in some cases nonsense and frameshift variants can cause splice aberrations and ultimately lead to a GoF effect on protein level (Flanagan et al., 2017).

613 phenotypes. There are only rare cases where phenotypes are distinct enough to make
614 such a decision. One such example includes distinctly different phenotypes associated
615 with GoF and LoF variants in *GABRB2* patients (Mohammadi et al., 2024). On the other
616 hand, in cases where LoF and GoF variants lead to similar phenotypes as seen in
617 intellectual disabilities, more evidence is necessary and functional studies are crucial.
618 Generally, when in doubt, functional evidence should be obtained.

- 619 - DN variants are, by definition, dominant and can thus only be found in dominant disorders.
620 However, distinguishing whether a variant is GoF or DN might be difficult. Fortunately, for
621 GoF and DN variants, the ASO approaches are mostly the same.
- 622 - There are rare reports of homozygous GoF (Schwarz et al., 2020) variants, thus carefully
623 checking the inheritance pattern and pathomechanism is important.
- 624 - A missense variant might cause the loss/disturbance of an inhibitory domain causing a
625 toxic gain of function effect of the protein (Mohassel et al., 2021).

626
627 If sufficient functional evidence does not exist for a given variant, the next step would be to request
628 more information on the variant or experimentally determine the pathomechanism. In the
629 meantime, classify the variant as “unable to assess”.

630

631 **Haploinsufficiency**

632 Besides the identification of the inheritance pattern and the pathomechanism of a variant, the
633 associated gene also needs to be evaluated for haploinsufficiency. Haploinsufficiency refers to a
634 situation in which one healthy, wildtype allele does not generate sufficient protein product to
635 preserve the physiological state (Deutschbauer et al., 2005). In most cases, haploinsufficiency is
636 connected to AD disorders associated with LoF variants; however, several genes have been
637 identified that are associated with LoF variants causing haploinsufficiency, and also GoF variants.
638 That is the case for example for the genes *SCN2A* and *SCN8A* (Li et al., 2021; Wagnon et al.,
639 2017). Here, GoF and LoF variants cause different clinical presentations depending on the
640 pathomechanism of the variant.

641

642 The knowledge of whether a gene is associated with haploinsufficiency is important to decide on
643 the best therapeutic approach to assess a variant (see [Fig. 6](#)). In brief, for AD disorders caused
644 by LoF variants, in case of haploinsufficiency, the healthy wildtype allele could be upregulated
645 using an ASO strategy (see [Section C](#)). For GoF variants, it will be important to assess whether
646 an allele-selective approach is necessary for transcript knockdown (see [Section B](#)).

647

648 To determine whether a gene is associated with haploinsufficiency, different resources can be
649 used. Often, a web search can help as well as GeneReviews.

650 GeneReviews <https://www.ncbi.nlm.nih.gov/books/NBK1116/>

651 Pubmed <https://pubmed.ncbi.nlm.nih.gov/>

652

653 Further indications of whether a gene is associated with haploinsufficiency can be gained from
654 checking the gene constraint metrics like the pLI and LOEUF scores in [gnomAD](#), or the
655 [haploinsufficiency score](#) determined by the ClinGen consortium. Additional information on dosage
656 sensitivity in general and how one can assess dosage sensitivity is provided in [Section B](#). We
657 consider a curation from a reputable independent source, such as the ClinGen consortium, the
658 highest level of evidence for dosage sensitivity/haploinsufficiency.

659 Step 3 - Evaluation of splicing effects

660 In this step, assessors will evaluate the effect on splicing of each variant. As explained in the
661 [Background](#), correction of aberrant splicing is an elegant way to restore the reading frame and
662 the physiological splicing pattern ([Fig. 1](#)). Thus, the first aim should be to assess whether a splice-
663 switching ASO strategy is applicable. Whenever this is not a possibility, the flowchart in [Step 4](#)
664 will aid in choosing the most suitable section for variant assessment. For the splicing evaluation
665 and correction of aberrant splicing, different considerations have to be made given inheritance
666 patterns and pathomechanism of the genetic variant (described separately at the end of [Step 3](#)).
667 [Table 3](#) provides an overview of the classification of variants for eligibility to ASO splice correction.
668

669 In this section, the following is covered:

- 670 1. Determining whether a variant affects splicing and what is considered sufficient evidence
671 for mis-splicing
- 672 2. Considerations for eligibility of splice correction ASOs for both intronic and exonic variants
- 673 3. Types of exonic variants which can cause aberrant splicing and alternate ASO strategies
674 to consider in place of splice correction
- 675 4. Important considerations for pathomechanism and inheritance pattern
- 676 5. How to search the literature for splice correction ASOs
677

678 Different types of variants can influence the splicing process and thus the decision on which ASO
679 strategy to apply. While all variants should be assessed for their splice-altering potential (Anna &
680 Monika, 2018), some exceptions usually do not have to be evaluated in Step 3:

- 681 • For nonsense and frameshift variants that are associated with a LoF mechanism at the
682 protein level, see [Section A](#)⁵ (or [Section C](#) in cases of haploinsufficiency). Rare cases
683 where nonsense and frameshift variants that affect splicing lead to GoF or DN effects can
684 be assessed with the considerations outlined in Step 3.
- 685 • For whole exon duplications and deletions, please consider the variant effect and jump to
686 [Section B](#) (knockdown) or [Section C](#) (upregulation from the wildtype), check [Fig. 6](#) for
687 directions.
688

689 The effects on splicing of each variant need to be confirmed with a functional assay, whereby only
690 RNAseq, qPCR, or cDNA sequencing/analysis obtained from patient-derived cells can be
691 considered sufficiently reliable. Please note that it is considered sufficient if functional data of the
692 above-mentioned kind is available on the same variant from a different patient, i.e., a case report
693 in the literature or information provided in ClinVar. Data gathered through mini- and midi-genes
694 cannot be considered sufficient as these assays do not take the full genetic environmental context
695 into account and results can be misleading (Lin et al., 2021). Explicitly, the prediction of splicing
696 effects using *in silico* tools is not sufficient evidence and cannot be used for these assessments
697 (Oh et al., 2024).
698

⁵ One notable exception applies here. Nonsense and frameshift variants have a small theoretical probability of resulting in aberrant splicing (Haque et al., 2024). Depending on the splicing effect, this could be canonical exon skipping, in which case the variant is not eligible for exon skipping treatment. It could also be partial exon skipping/cryptic splicing in which the exon in which the variant is located can still be considered for canonical exon skipping, see [Section A](#).

699 In case there is functional evidence against a splice-altering effect, i.e., confirmation that the
700 variant does not affect splicing, please refer to [Fig. 6](#) to guide you towards the next section
701 applicable to your case. Additionally, if there is no functional evidence of splicing effects, please
702 refer to [Fig. 6](#). In the case where there is no evidence of splicing effects (whether for or against),
703 this does not mean the variant is ineligible for splice correcting ASO. A lack of functional evidence
704 towards splicing means this variant cannot be assessed for splice correction eligibility at this time.
705 Theoretically, all variants are suspicious of splicing until demonstrated otherwise, and if evidence
706 on splicing effects becomes available, the variant should be reassessed for eligibility towards
707 splice correction ASOs.

708
709 If splicing effects are confirmed, the exact effects on splicing need to be evaluated. This can be a
710 gain of an acceptor or donor splice site or the loss/weakening of an acceptor or donor splice site.
711 Especially, if canonical splicing is destroyed - due to canonical splice site variants, branchpoint
712 variants, or variants destroying other splice-regulatory elements⁶ - the variant is most likely not
713 eligible for a splice correction ASO treatment. Canonical splicing is considered destroyed if no
714 wildtype transcript/splicing at the canonical splice sites can be identified in the functional analysis.
715 If some wildtype transcript is still produced or protein function detected, canonical splice sites are
716 considered as weakened. Variants that fully abolish canonical splicing are not amenable to a
717 splice correction ASO and are classified as “not eligible” for this approach.^{7,8}

718
719 We recommend studying available data carefully and to also assess data provided in
720 supplementary material, as one can often find relevant gels and blots in the supplement that may
721 only be hinted at in the main manuscript. Further, look out for evidence illustrated by gels or qPCR
722 results etc. instead of solely relying on how the authors describe or discuss the data. From our
723 experience, some manuscripts claim there is no wildtype splicing left whereas faint wildtype bands
724 can be identified in a gel, which might be sufficient to consider this a suitable case. Please
725 consider that a variant's effect on splicing may not have been assessed. The absence of evidence
726 might indicate that splicing effects were overlooked.

727
728 We generally distinguish intronic and exonic variants for the splicing assessments. Please also
729 see [Fig. 5](#) for a general overview of classification of variants towards splice correction.

730 **Intronic variants**

731 As a rule of thumb, we consider intronic variants that are >-100 bp (upstream of acceptor splice
732 site) or >+50 bp (downstream of donor splice site) away from the nearest canonical splice site as
733 likely eligible, i.e., there should be no negative impact on the canonical splice sites and
734 branchpoint ([Fig. 5](#)). For variants closer to the canonical splice sites, enough functional evidence

⁶ Under certain circumstances, aberrant splicing caused by a destroyed splice enhancer can be counteracted by the steric blocking of a splice silencer. The regulatory element to be blocked should be strong enough and react in *cis* to the affected splice-regulatory element.

⁷ Two notable exceptions apply here. If the destruction of canonical splicing leads to exon skipping of an out-of-frame exon, skipping of adjacent exons to restore the reading frame can be considered but criteria outlined in [Section A](#) apply. If the destruction of canonical splicing leads to a partial skipping of the exon (a few bases are missing - usage of cryptic splice sites) resulting in a frame-shift, ASO-induced canonical exon skipping can be considered for exons that fulfill criteria outlined in [Section A](#).

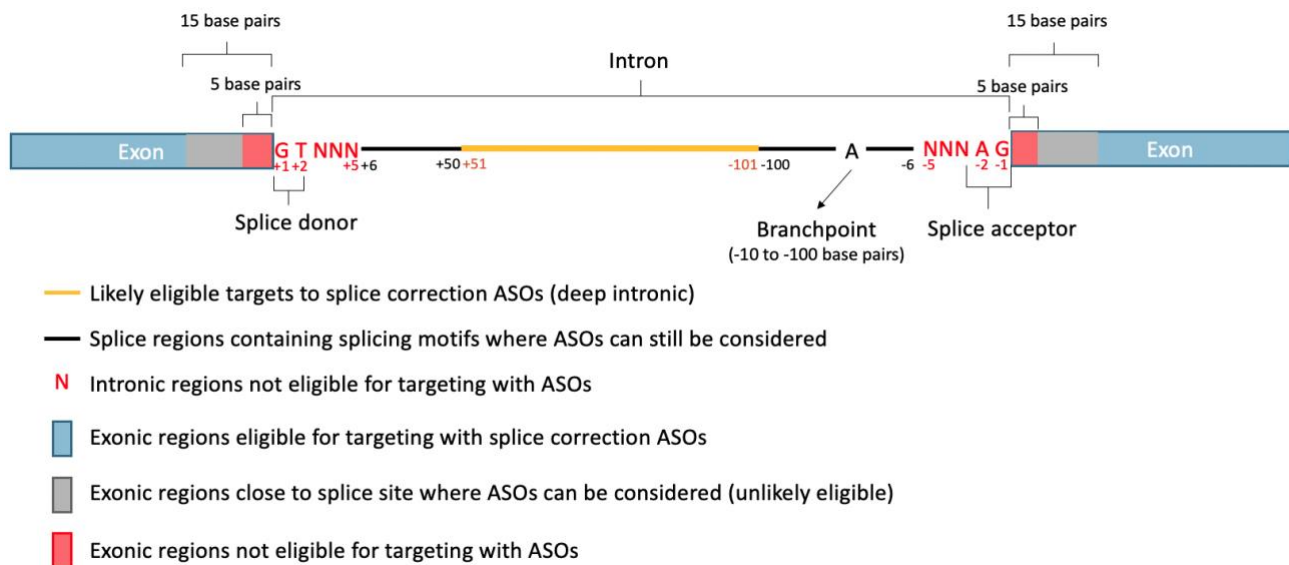
⁸ The assessment of whether the wildtype allele is still left can be difficult. For homozygous and hemizygous variants, this is straightforward, but in the case of heterozygous or compound heterozygous variants, this analysis is more difficult and information on the other allele is necessary to assess the effect of a variant.

735 should be available on the effect on canonical splicing. Variants within 5 bp of the exon-
 736 intron/intron-exon boundary are considered “not eligible” for splice correction.⁹ Note that the ASO
 737 should also not disturb the branchpoint, which can vary and is usually found 18-40 bp upstream
 738 from the acceptor splice site, but can be in 10-100 bp upstream (i.e., -10 to -100 bp region) (Xie,
 739 Wang, & Lin, 2023).

740
 741 Intronic variants with functional evidence of causing aberrant splicing can now be analyzed using
 742 the above-mentioned criteria and classified using [Table 3](#).

743
 744 **Exonic variants**

745 For exonic variants, further considerations apply. As for the intronic variants, the exonic variant
 746 should be at least 5 bp outside of the canonical splice sites (upstream and downstream - hard
 747 cut-off). We further define a second cut off at 15 bp (region 6 to 15 bp upstream or downstream
 748 of the canonical splice sites) as a soft cut off where a splice correction can be considered but is
 749 challenging. This cut off is based on the idea that ASOs can bind to this region without destroying
 750 the canonical splice set, yet there is still a possibility of weakening canonical splicing.



751 **Figure 5: Eligible targets for splice correcting ASOs**

752 Design of splice correcting ASOs takes into consideration key splicing motifs. The most amenable
 753 variants for splice correction are deep intronic variant, highlighted yellow in this figure. As the
 754 canonical splice sites are approached, one must consider the effects of the ASO blocking
 755 important splice site motifs (i.e., the branchpoint). These regions are highlighted black (intronic)
 756 or gray (exonic) in this figure. Anything within 5 bp is considered not eligible for targeting with an
 757 ASO (highlighted red in this figure, both intronic and exonic).

⁹ Avoiding +/-5 bp around the exon-intron/intron-exon boundaries is recommended because these variants are most likely destroying canonical splicing (or the splice site itself) which cannot be corrected. Additionally, it will be challenging to place an ASO within this region without negatively impacting canonical splicing. However, there are currently ongoing research efforts that aim at identifying ways to counteract aberrant splicing caused by variants within this region. Should this approach become feasible in the future, the guidelines will be adjusted.

758
759
760
761
762
763
764
765
766
767
768
769
770
771
772
773
774
775
776
777
778
779
780
781
782
783
784
785
786
787
788
789
790
791
792
793
794
795
796
797
798

For exonic variants, the specific type of variant is important for further analysis.

1. Nonsense and frameshift variants that cause aberrant splicing can be further distinguished:
 - a) If the splice aberration itself leads to a LoF effect on the protein, the variant cannot be analyzed using this part of the guidelines. Correction of splicing would still lead to a LoF on protein level. Thus, these variants fall under [Section A](#) for exon skipping analysis (or [Section C](#) in the case of haploinsufficiency).
 - b) If the splice aberration leads to a toxic GoF effect on protein level, the variant can be considered for splice correction. Correction of the splicing effect will then lead to an early truncation and most likely a LoF effect on protein level. For certain cases, this is a useful ASO approach. It is also possible to consider these variants for downregulation ([Section B](#)).

In both situations our considerations for haploinsufficiency should be taken into account.
2. Synonymous variants that cause aberrant splicing do not influence the amino acid sequence and can be assessed using [Table 3](#).
3. For missense variants and small in-frame indels (<50 bp) (Mahmoud et al., 2019), the considerations are more complicated as both the effect on splicing and also the effect of altering the protein coding sequence need to be taken into account. It needs to be established that the variant effect at the protein level solely arises from the aberrant splicing and not that a missense variant or small indel itself causes a pathogenic effect. It is possible that a missense variant causing aberrant splicing leading to a LoF at the protein level, could independently cause a GoF or DN effect as a missense variant.
 - a) If the effect of a missense variant or in-frame indel on the protein sequence is not known (independent of the splice-altering effect), the variant cannot be assessed until further evidence is available¹⁰
 - b) If the change in amino acid sequence is known to be pathogenic, for example, if a different pathogenic nucleotide change causes the same amino acid change without the splicing effect, different sub-criteria apply:
 - i) Aberrant splicing and missense variant cause GoF/DN effect → can be considered for downregulation ([Section B](#)) or for exon skipping ([Section A](#))
 - ii) Aberrant splicing and missense variant cause LoF effect, with the amino acid change causing a complete loss of function on protein level → can be considered for exon skipping (see [Section A](#))
 - iii) Aberrant splicing causes GoF effect and missense variant would lead to a LoF → can be considered for exon skipping ([Section A](#)) or knockdown ([Section B](#)) and also for splice correction if the LoF phenotype is milder or loss of one allele is tolerated
 - iv) Aberrant splicing causes LoF effect and missense variant causes GoF/DN effect → can be considered for exon skipping ([Section A](#)) or for splice

¹⁰ One can consider exon skipping for the variant independent if the variant is LoF, GoF, or DN based on the amino acid change if it is possible to show that the resulting protein has some remaining typical function. Please see [Section A](#).

- 799 correction in case of a GoF effect that leads to a less severe phenotype
800 compared to the LoF phenotype
- 801 v) Aberrant splicing leads to GoF or LoF effect and the variant causes partial
802 loss of function/reduced protein function → can be considered for splice
803 correction and would be classified as “unlikely eligible” for splice correction.
804 Here, the underlying thought is that having a partially functional protein is
805 better than having no protein function or toxic protein function due to
806 aberrant splicing. Variant can also be considered for exon skipping ([Section](#)
807 [A](#)) or for downregulation ([Section B](#)) in case of GoF effects from aberrant
808 splicing.
- 809 c) If the amino acid change is known to be benign on protein level, due to population
810 data or functional studies, the variant follows the same considerations as a
811 synonymous variant and can be analyzed using [Table 3](#).
812

813 **Important considerations for different inheritance patterns and pathomechanisms**

814 For AR disorders, [Step 3](#) applies without restrictions. If the variants are homozygous or compound
815 heterozygous, the Step 3 evaluation has to be done once or twice for both variants. If the disorder
816 is AD associated with a LoF, the Step 3 guidelines also apply. Since the purpose of these ASOs
817 is to restore wildtype splicing, rather than alter splicing, whether the ASO binds the wildtype or
818 pathogenic allele does not matter (unlike with canonical exon skipping ASOs and gapmer ASOs).
819 Similarly, variants that lead to a GoF or DN effect through altering splicing can be assessed with
820 these guidelines (please consider the effect of variant on protein level once splicing is corrected).
821 For GoF or DN variants, however, one might consider a knockdown approach for a more
822 efficacious effect (see [Section B](#)).
823

824 **ASO check**

825 In addition to the recommended assessment strategies, assessors should review the literature for
826 splice correcting ASO strategies. This review can be performed either as the final step to validate
827 the assessment strategy or earlier in the assessment process (see [Step 0](#)). Specifically, for splice
828 correcting ASOs, it is crucial to evaluate whether a splice correcting approach has been
829 implemented and validated for the specific variant at the RNA level. Please also consider that the
830 rescue at RNA level needs to be sufficient to produce enough protein to rescue the phenotype.
831 Ideally, a publication should provide this evidence.
832

833 Splicing mechanisms differ by variant, making it crucial to ensure that any existing ASOs found in
834 the literature are applicable to the specific variant of interest. Additionally, if the literature indicates
835 that an ASO is ineffective in correcting splicing for the variant of interest, this does not necessarily
836 render the variant ineligible for ASO development. We recommend that a variant should only be
837 considered “not eligible” for splice-correcting ASOs if there is evidence from two independent
838 investigations at the protein or functional level, or from one investigation providing a convincing
839 explanation as to why an ASO cannot be developed.
840

841 In cases of conflicting evidence, consider the quality of the research, the types of experiments
842 conducted, the nature of the results shared, and the publication date. The evaluation of literature

843 on existing ASOs should be carried out at the assessor's discretion, with a critical and discerning
844 approach.

845
846 To help with identifying available ASOs for splice correction, we recommend a search term in
847 Pubmed like this (searching for an ASO targeting a specific variant), text in bold would need to be
848 adjusted for the gene and variant being examined:

849 **ABCA4** AND ((ASO) OR (AON) OR (antisense oligonucleotide)) AND ((**Gln876Ter**) OR
850 (**c.2626C>T**) OR (**E876X**) OR (**Q876X**) OR (**Gln876***) OR (**E876***) OR (**Q876***))

851

852 **Table 3: Classification of variants for their eligibility towards splice correction.**

Classification	Criteria
Eligible	ASO has already been developed and shown to work with available functional evidence at the protein level (pre-clinical data is sufficient)
Likely eligible	Functional studies (RNAseq, qPCR) validate alternate splicing AND (if intronic) { Intronic variant -101 bp or +51 bp outside of the canonical splice sites OR No weakened branch point/canonical splice site as determined by functional studies } AND (if exonic) Donor/acceptor gained is not within 15 bp of a canonical splice site AND (if exonic) Functional evidence shows there is no pathogenic effect of the amino acid change(s) on the protein.

Unlikely eligible	<p>Functional studies (RNAseq, qPCR) validate alternate splicing</p> <p>BUT</p> <p>{ Canonical splice site and branchpoint is weakened (but still functional, i.e., either canonical transcript or protein function still detectable)</p> <p>OR/AND (if intronic)</p> <p>Intronic variant within -6 and -100 bp or +6 and +50 bp of the canonical splice sites.</p> <p>OR/AND (if exonic)</p> <p>Donor/acceptor gained within 6-15bp of the canonical splice site.</p> <p>OR/AND (if exonic)</p> <p>There is evidence of residual protein function (i.e., if splicing is corrected, the protein coding change still produces a partially functional protein).</p> <p>}</p>
Not eligible	<p>Canonical splice site and branchpoints are destroyed</p> <p>OR</p> <p>Different nucleotide change leading to the same predicted amino acid residue change – but no alternate splicing – is pathogenic</p> <p>OR</p> <p>Variant within 5 bp of the canonical splice site</p> <p>OR</p> <p>Evidence that ASO cannot be developed, shown by two independent investigations on the protein/functional level or one investigation with a convincing explanation of why ASO cannot be developed.</p>

853

854

855

856

857 Step 4 - Identification of Relevant Guideline

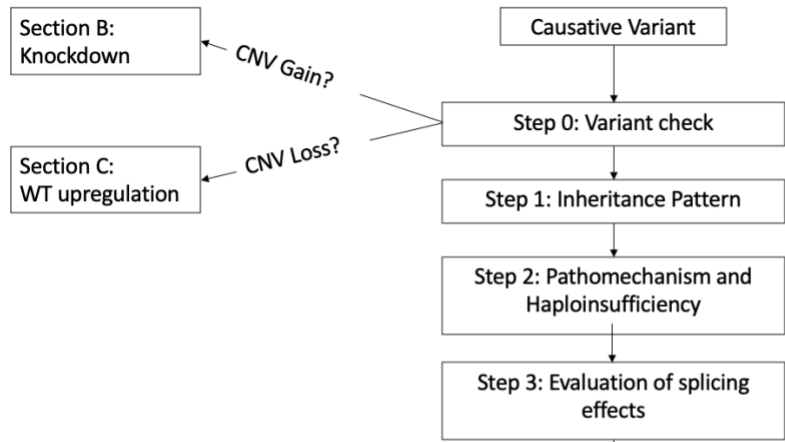
858 In this step, assessors will be guided towards the sections (sub-guideline) applicable to the variant
859 under assessment. Once the inheritance pattern, pathomechanism, and splicing effects are
860 evaluated, a decision on the most useful guideline(s) can be made. If a variant does not have an
861 effect on splicing, or an effect on splicing that cannot be assessed using [Step 3](#), the assessor can
862 turn to the following flow diagram and chart for assistance.

863
864 The table within the flow chart lists all applicable sections and with the knowledge of the
865 inheritance pattern and pathomechanism, the assessor can now identify the applicable section(s)
866 to be read to make the assessment.

867
868 Please note again that each section is a stand-alone sub-guideline and thus one can jump to the
869 necessary section without having to read the full text.

870
871
872
873
874
875
876
877
878
879
880
881
882
883
884
885
886
887
888
889
890
891
892
893
894
895
896
897
898
899
900
901

902
903
904
905
906
907
908
909
910



911
912
913

914

Step 4: Identification of Relevant Guidelines			
	Gain-of-Function	Loss-of-Function	Dominant-Negative
Autosomal Recessive	Section A: Exon skipping	Section A: Exon skipping	N/A
	Section B: Knockdown		
Autosomal Dominant	Section A: Exon skipping*	Section A: Exon skipping*	Section A: Exon Skipping*
	Section B: Knockdown*	Section C: WT Upregulation	Section B: Knockdown*
X-Linked Recessive	Section A: Exon skipping	Section A: Exon skipping	N/A
	Section B: Knockdown		
X-Linked Dominant	Section A: Exon skipping*	Section A: Exon skipping*	Section A: Exon Skipping*
	Section B: Knockdown*	Section C: WT upregulation**	Section B: Knockdown*

915
916
917
918
919
920
921
922
923
924
925
926

* Considerations for allele specific ASO
** Only applicable for individuals with two X chromosomes

927
928
929
930
931

Figure 6: Flowchart for the identification of relevant guidelines.
Steps 0, 1, and 2 require the assessment of the variant description, inheritance pattern, and pathomechanisms. The evaluation of splicing effects is considered in Step 3. Depending on the information gathered in Steps 0-3, one can consider the guidelines discussed in Sections A, B or C.

932 Section A - Considerations for Canonical Exon 933 Skipping

934
935 In this section, assessors will be guided on how to assess a variant for eligibility towards canonical
936 exon skipping ASOs. As described in the [Background](#), exon skipping ASOs can be used to skip
937 exons containing the pathogenic variant ([Fig. 1](#)). Variants generally to be considered for exon
938 skipping are nonsense and frameshift variants causing a LoF in AR, AD, and X-linked disorders
939 (additional considerations apply in dominantly inherited diseases, see “Important considerations
940 for different inheritance patterns and pathomechanisms” at the end of this section). GoF and DN
941 negative variants can also be amenable for an exon skipping approach under certain
942 circumstances as well as whole exon deletions (see “Important considerations for different
943 inheritance patterns and pathomechanisms” in this section). While splicing assessments are
944 based on the variant, evaluating the potential for exon skipping are based on the exon, thus an
945 exon skipping approach is applicable to all variants within that exon. For an exon to be skippable,
946 different criteria need to be met ([Fig. 7](#)).

947
948 This section covers the following topics:

- 949 1. Assessing exon position and frame
- 950 2. Assessing exon size
- 951 3. Strategies for searching and considering naturally occurring exon skipping and in-frame
952 deletions
- 953 4. Assessing the role of functional domains
- 954 5. Important considerations for different inheritance patterns and pathomechanisms
- 955 6. Strategies for searching the literature for exon skipping ASOs

956



957

958 **Figure 7: Overview exon skipping assessment using a hypothetical transcript.**

959 The first and last coding exons (exon 2 and 10) cannot be skipped, in addition to out-of-frame
960 exons (exons 3,4,7,9, shown by the shape of the exons). In-frame exons encoding for more than
961 10% of the coding region (exon 5) and exons coding for functional domains (exon 8) are unlikely
962 eligible for exon skipping. Likely eligible for exon skipping are small, in-frame exons that do not
963 code for a domain (e.g., exon 6). White: exon not considered for canonical exon skipping, e.g.,
964 exons in the UTRs, grey: Exons not eligible for skipping, blue: exons unlikely eligible for exon
965 skipping, green: exon likely eligible for exon skipping, orange: functional domain.

966

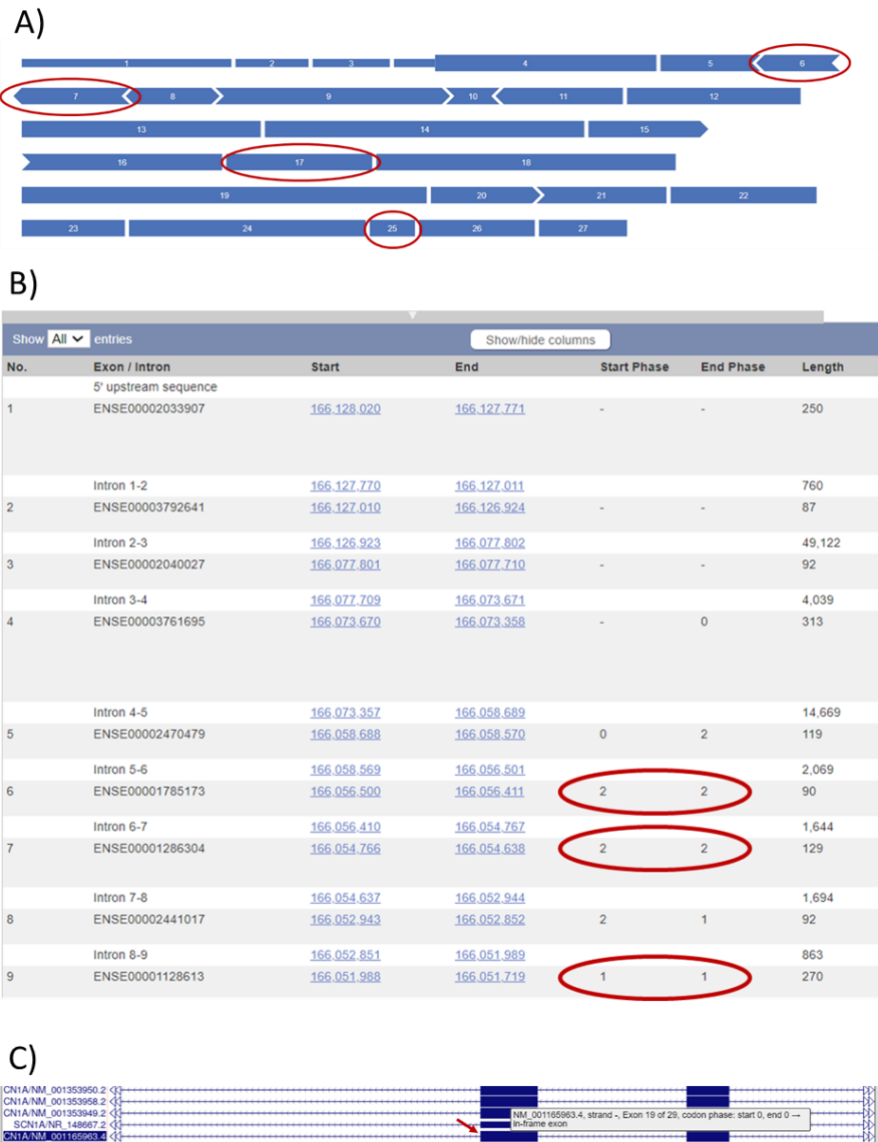
967 **Assessing Exon Position and Frame**

968 The first and last coding exon are usually not eligible for exon skipping as this would lead to the
969 loss of the start or stop codon. Note, due to untranslated regions (UTRs) the first and last exons
970 of a transcript are not necessarily coding exons and, thus, assessors should be aware of which
971 exons contain the canonical start and stop codons (Aspden, Wallace, & Whiffin, 2023) ([Fig. 7](#)).
972 Additionally, genes containing exactly one coding exon are not eligible and are disqualified from

973 further analysis. Next, assessors should evaluate the length and position/frame of the exon. Out-
974 of-frame exons (containing a number of base pairs not divisible by 3) should be classified as “not
975 eligible” in the case of LoF variants where a restoration of the reading frame is the aim. Assessors
976 can use tools such as the [UCSC Genome Browser](#), [ExonViz](#) (van den Berg, Lauffer, & Laros,
977 2024),
978 or [Ensembl](#) to determine whether the exon is in-frame or out-of-frame and whether the exon is
979 coding or non-coding ([Fig. 8](#)).

980
981
982
983
984
985
986
987
988
989
990
991
992
993
994
995
996
997
998
999
1000
1001
1002
1003
1004
1005
1006
1007
1008
1009
1010
1011
1012
1013
1014
1015
1016
1017
1018

1019
1020
1021
1022
1023
1024
1025
1026
1027
1028
1029
1030
1031
1032
1033
1034
1035
1036
1037
1038
1039
1040
1041
1042
1043
1044
1045
1046
1047
1048

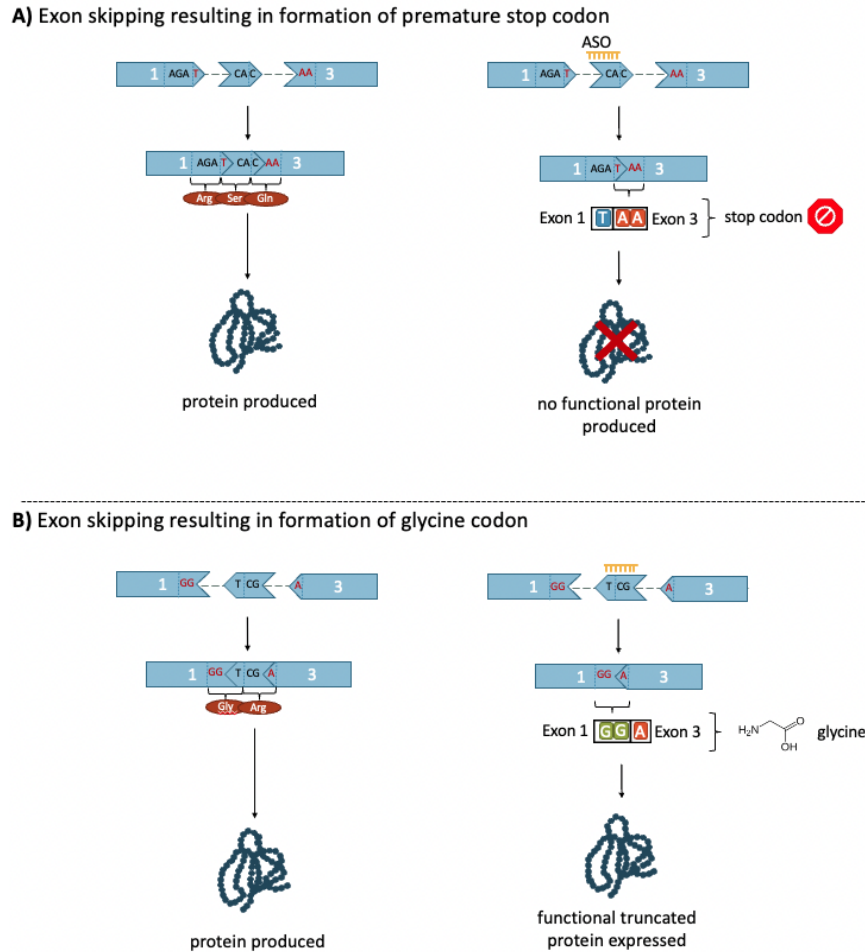


1049
1050
1051
1052
1053
1054
1055
1056
1057
1058
1059
1060
1061
1062
1063

Figure 8: Determining exon frames.

A) Exon frames in [ExonViz](#) can be identified by their shape. Rectangular shapes are in-frame with a phase at 0-0 (exon starts and ends with the codon). Exons with an arrow on one end and a notch on the other end are also considered in-frame, whereby it does not matter if the arrow is upstream or downstream. If there are two arrows or two notches, the exons are out-of-frame. An arrow indicates a 1 nucleotide overhang while a notch illustrates a 2 nucleotide overhang. Small, in-frame exons are circled in red (exon 6, 7, 17 and 25). For example, exon 6 starts with an arrow, meaning the exon starts with 1 nucleotide from a codon starting in the previous exon (i.e., this is the third nucleotide in the codon, with the first 2 nucleotides being found in exon 5). Exon 6 ends with a notch, indicating that these are the first two nucleotides of a codon (2-2 phase). In total, both ends together cover 3 nucleotides. **B)** Identification with [Ensembl](#) can be done by checking the phases of an exon. Exons with phases 0-0, 1-1, 2-2 are in-frame. Additionally, dividing the exon length by 3 can help determine the frame. **C)** [UCSC Genome Browser](#) shows phases to determine the frames using mouse over. The browser directly indicates the phase for you. Please ensure you are hovering over the correct transcript.

1064 For in-frame exons, it is possible that the first and last codon is partially encoded by the adjacent
 1065 exons (exons with phases 1-1 and 2-2). In this case, the formation of a stop codon is possible at
 1066 the new exon-exon boundary created by splicing the upstream and downstream exon together.
 1067 Assessors should evaluate whether joining the adjacent exons would form an in-frame stop
 1068 codon, coded by either a TAA, TAG, or TGA (Fig. 9). If this is the case, the exon is not eligible for
 1069 exon skipping (exceptions apply, please see below). Assessors can utilize the [UCSC Genome](#)
 1070 [Browser](#) or [Ensembl](#) to check (instructions on how to perform this check are provided in video 11,
 1071 the NM_000170.3(GLDC):c.538C>T example).



1072 **Figure 9: Formation of a new codon as a result of exon skipping.**

1073 When an in-frame exon with phase 1-1 or 2-2 is skipped, the adjacent exons will form a new
 1074 codon on the new exon-exon boundary. Panel A shows the formation of a stop codon when an
 1075 ASO is used to skip in-frame exon 2. The “T” nucleotide from exon 1, and “AA” nucleotides from
 1076 exon 3 join together to form a stop codon. This leads to a premature termination resulting in an
 1077 absent gene product or a truncated, non-functional product. Panel B shows the formation of a
 1078 new codon with a functional product. The “GG” nucleotides at the end of exon 1 join the “A”
 1079 nucleotide at the start of exon 3, upon skipping of exon 2. This codes for glycine.
 1080
 1081

1082 The skipping of an exon that disrupts the reading frame (skipping out-of-frame exons, forming
1083 premature termination codons, or skipping the first and last coding exon) tends to be not eligible
1084 for analysis. However, there are exceptions to these rules:

- 1085 ● It is theoretically possible to skip out-of-frame exons to generate a premature termination
1086 codon within the last or penultimate exon given that there is some left-over function of the
1087 protein (please note that this is theoretically possible - one would still have to assess the
1088 last exon for the importance of domains and whether this shortened transcript is predicted
1089 to undergo nonsense mediated decay)
- 1090 ● It is also possible to skip out-of-frame exons for GoF or DN variants to downregulate
1091 transcript levels, please see “considerations for different inheritance patterns and
1092 pathomechanisms” in this section, as well as [Section B](#)
- 1093 ● It is theoretically possible to skip an in-frame exon which results in the formation of a stop
1094 codon if it is the penultimate exon given that there is some left-over function of the protein
1095 (unlikely eligible)
- 1096 ● It is possible to skip adjacent out-of-frame exons if there is a whole exon deletion of an
1097 out-of-frame exon to restore the reading frame. Yet, the other criteria on the size of the
1098 skipped area (now deletion + skipped exon) and functional domains apply (see below)
- 1099 ● It is theoretically possible to skip consecutive out-of-frame exons so as not to disrupt the
1100 reading frame, though designing an ASO that skips two consecutive exons or multiple
1101 ASOs may prove to be a challenge
- 1102 ● It is theoretically possible to skip the first coding exon if a nearby in-frame start codon
1103 exists, and the first exon meets exon skipping criteria outlined in [Table 4](#)

1104

1105 **Assessing Exon Size**

1106 Assessors should consider the size of the exon. As per ClinGen recommendations, an in-frame
1107 deletion in the size of 10% or more of the coding transcript is considered a strong criterion for loss
1108 of protein function (Walker et al., 2023). However, this is protein and exon-dependent (i.e., losing
1109 up to 30% of the dystrophin transcript can still result in a functional, truncated protein (Duan, 2016;
1110 Gao & McNally, 2015)). For this reason, skipping an exon that encodes for more than 10% of the
1111 protein is considered “unlikely eligible”, and obtaining functional evidence is the expected next
1112 step.

1113

1114 The percentage of coding region can be calculated as follows:

1115

1116 *Exon size as coding region in % = (exon length in bp/3) / length of the protein in aa *100*

1117

1118 OR

1119

1120 *Exon size as coding region in % = (exon length in bp) / cDNA length of the gene *100*

1121

1122 Please see this example for the NM_003793.4(CTSF):c.264del (p.Cys89fs) variant in video 10.
1123 The protein is 484 aa in length. Exon 2 is in-frame 0-0 and spans 99 nucleotides. This information
1124 can be obtained from Ensembl, UCSC genome browser, and/or UniProt (see video).

1125

1126 Exon size in coding region % = (99/3) aa / 484 aa * 100 = 6.8 %

1127

1128 There are instances where an exon coding for more than 10% of the protein will be classified as
1129 “not eligible”. If the exon encodes for more than 10% of the protein and codes for more than one
1130 non-repeat domain, this exon should be considered non-skippable and therefore not eligible for
1131 exon skipping ASOs. For more detail on assessing the role of functional domains, please see the
1132 section titled “Assessing the Role of Functional Domains”.
1133

1134 ***Searching for Cases of (Natural) Occurrences of Exon Skipping or In-frame Deletions***

1135 Assessors should determine whether exon skipping has already been observed naturally. This
1136 information is necessary to further determine whether exon skipping is a suitable option for a
1137 given case. There are different ways in which exon skipping can occur naturally and resources
1138 such as [ClinVar](#), [gnomAD](#), [DECIPHER](#), [ExonSkipDB](#), and [PubMed](#) aid with their identification:
1139

1140 A) Canonical splice site or splice region variants

1141 Assessors should search ClinVar, PubMed, gnomAD, or Decipher to collect data on
1142 variants that cause splice aberration leading to full exon skipping. This information should
1143 have been validated by sufficient functional data (e.g., RNAseq or qPCR). Note that also
1144 variants affecting splicing motifs outside of the splice sites can cause exon skipping and
1145 would also fall under this category.

1146 If full exon skipping has been observed and validated and is disease-causing (pathogenic
1147 variant), this exon (and therefore variants within that exon) is not eligible for exon skipping
1148 therapy. Please note that *in silico* predictions are not to be used as substitutes for RNAseq
1149 and qPCR data, and assessors must pay careful attention to what tools were used in the
1150 assessment of splicing outcomes of canonical splice site variants.

1151 If full-length exon skipping has been observed in individuals who do not show signs of the
1152 disease in question (individuals can of course have other diseases) the exon is eligible for
1153 exon skipping. If no evidence of pathogenic or benign exon skipping validated by qPCR
1154 or RNAseq exists, assessors should proceed with the analysis.
1155

1156 B) Full exon deletions or in-frame deletions within the exon

1157 Assessors should search ClinVar, PubMed, gnomAD, or Decipher to collect data on in-
1158 frame deletions of full-exon deletions within the exon of interest. If in-frame deletions have
1159 been observed and validated to be disease-causing (pathogenic), this exon (and therefore
1160 variants within that exon) are not eligible. If this is the case, no further analysis is required.
1161 However, assessors should pay attention to whether the in-frame deletion creates a stop
1162 codon or new amino acid, as these exons are still eligible for exon skipping via ASO (i.e.,
1163 the pathogenicity is possibly a result of premature termination or the change of an amino
1164 acid leading to folding changes and not necessarily the deletion of amino acids itself). If
1165 this is the case, assessors should proceed with analysis.

1166 If full exon deletions and in some instances larger in-frame deletions are identified in the
1167 general population and classified as benign, this exon can be considered “eligible” for an
1168 exon skipping approach.
1169

1170 The assessment for occurrence of natural exon skipping can easily be summarized as follows:

1171 Eligible - Loss of the exon, either due to splice aberration or genomic deletions, have been
1172 classified as benign

1173 Not eligible - Loss of the exon or larger parts of the exon have been classified as pathogenic

1174 **Assessing the Role of Functional Domains**

1175 Assessors should also consider the functionality for which the exon codes. To begin, assessors
1176 should identify which domains are coded by the exon using tools such as the [UCSC Genome](#)
1177 [Browser](#). Assessors can then search for the role of these amino acids or domains in the literature
1178 using [PubMed](#), or utilize databases such as the [Protein Database](#) (PDB) or [UniProt](#). Assessors
1179 should pay attention to the role of these specific domains (i.e., DNA binding domain, catalytic
1180 domains) or amino acids (i.e., specific amino acid known to play an important role in enzyme
1181 activity or protein structure). Sometimes, a web-search with “protein name protein structure” will
1182 also yield the desired results.

1183
1184 Though it is difficult to define the importance of the domain or to predict the effects of exon
1185 skipping on protein function, assessors can consider the following exons as “not eligible” for exon
1186 skipping:

- 1187 ● The exon codes for important amino acid(s) with a known key functional role in the protein,
1188 or a functionally validated domain (i.e., involved in a catalytic domain, dimerization
1189 domain, inhibitory domain, etc.)
- 1190 ● The exon is a known mutational hotspot for pathogenic LoF missense variants (tools such
1191 as [MetaDome](#), [Essential3D](#), and [Franklin](#) can be used to help determine this)
- 1192 ● The exon codes for the only functional domain in the protein (i.e., no possibility of residual
1193 function remaining)
- 1194 ● The exon codes for multiple functional domains and covers more than 10% of the coding
1195 region

1196 An exon that codes for a functional domain that does **not** meet the above criteria means it can be
1197 considered as “unlikely eligible”, indicating the need for functional studies.

1198
1199 Additionally, **tandem repeat domains** can also be considered as “unlikely eligible”, assuming the
1200 loss of a repeat (or part of a repeat domain) from the protein will still have residual function (Duan,
1201 Goemans, Takeda, Mercuri, & Aartsma-Rus, 2021). Assessors can utilize the aforementioned
1202 strategies to assess tandem repeat domains. However, in cases where in-frame deletion of a
1203 repeat domain have been reported as pathogenic, or have been functionally proven to disrupt
1204 protein function, these exons would be considered “not eligible”. Most suitable are in-frame exons
1205 that contain a single, full repeat of the tandem repeats and no additional domains. For exon
1206 skipping of tandem repeat domains, we recommend that the protein consists of at least 5 tandem
1207 repeats.

1208
1209 Generally, we encourage contacting experts on a given gene and protein to discuss the role of
1210 the different domains and whether they consider exon skipping a possibility. Further, when looking
1211 into functional domains please check the exact role of a domain and the effect of losing the
1212 domain. For example, skipping an inhibitory domain could lead to a gain of function effect on
1213 protein level.

1214
1215 If the exon codes for less than 10% of the protein, and no functional domain or important amino
1216 acids are coded for by the exon and the exon fulfills other criteria listed in [Section A](#), then the
1217 exon can be considered as “likely eligible”. Exons are classified using the criteria outlined in [Table](#)
1218 [4](#).

1219

1220 **Special considerations for missense variants and small in-frame indels**

1221 If a missense variant or small, in-frame indel lead to a LoF on protein level, additional caution is
1222 necessary. These types of variants often indicate that the exon has a specific function even
1223 though no domain might be annotated. This could be that the respective amino acids are crucial
1224 for folding or the function of a certain domain has not yet been established. In these cases, we
1225 recommend paying special attention to other reported pathogenic variants within the exon. Should
1226 there be more pathogenic missense variants and in-frame indels than truncating variants, we
1227 consider this exon “unlikely eligible” for exon skipping.

1228

1229 However, for missense variants within tandem repeat domains, we refer to the criteria outlined in
1230 the tandem repeat domain section as this is an exception to this recommendation.

1231

1232 **Important considerations for different inheritance patterns and pathomechanisms**

1233 The recommendations described above apply without restrictions to LoF variants in recessive
1234 disorders. For LoF variants in AD disorders, one might consider the development of allele-specific
1235 ASOs. This will ensure that exon skipping does not occur on the wildtype transcript and may result
1236 in greater amounts of functional gene product compared to non-allele specific ASOs. Though
1237 specific ASO design is beyond the scope of these guidelines, this may prove challenging and limit
1238 the types of ASOs to be designed.

1239

1240 In the specific case of an AD disorder with an out-of-frame exon deletion, allele-specificity is
1241 necessary otherwise exon skipping is not possible. Here, exon skipping of adjacent out-of-frame
1242 exons has the potential to restore the reading frame on the mutant allele, at the same time exon
1243 skipping of that out-of-frame exon would destroy the reading frame of the wildtype allele.

1244

1245 Further, for AD disorders associated with LoF variants, an upregulation of protein production from
1246 the wildtype allele should also be considered as an alternative option to exon skipping (see
1247 [Section C](#)).

1248

1249 For GoF and DN variants, additional considerations are possible. The guidelines for exon skipping
1250 can be applied as they are, with the exception that toxic GoF caused by the disruption of an
1251 inhibitory domain will not be rescued by skipping the exon containing the inhibitory domain
1252 (Mohassel et al., 2021). For GoF and DN variants, an out-of-frame exon can be skipped, either
1253 the one containing the variant or any other one to downregulate transcript levels. In such a case,
1254 haploinsufficiency of the gene should be taken into account which might require allele-selective
1255 approaches. Generally, for downregulation of a transcript in case of GoF and DN variants, [Section](#)
1256 [B](#) can be consulted.

1257 **ASO check**

1258 In addition to the recommended assessment strategies, assessors should review the literature or
1259 registries for exon skipping ASO strategies. This review can be performed either as the final step
1260 to validate your assessment strategy or earlier in the assessment process (see [Step 0](#)).
1261 Specifically, for exon skipping ASOs, it is crucial to evaluate whether an exon skipping approach
1262 has been implemented and validated at both the RNA and protein levels and shown to have the
1263 desired effect on the phenotype.

1264

1265 In cases of conflicting evidence of ASO developments and the feasibility of an ASO therapy,
 1266 consider the quality of the research, the types of experiments conducted, the nature of the results
 1267 shared, and the publication date. The evaluation of literature on existing ASOs should be carried
 1268 out at the assessor's discretion, with a critical and discerning approach.

1269
 1270 For exon skipping ASOs specifically, the approach will be applicable to all variants within a given
 1271 exon. However, please pay attention to whether an existing ASO would bind to the variant site
 1272 and could thus not be used in the case under assessment if it is a different variant. Also check if
 1273 the existing target site contains a SNP and the same SNP is present on the correct allele in the
 1274 case under assessment. The exon (and therefore variant) is still considered “eligible” for canonical
 1275 exon skipping according to the criteria outlined in [Table 4](#) even if the ASO binds to a different
 1276 variant site. This, however, means that a new ASO needs to be designed and developed for the
 1277 variant under assessment.

1278
 1279 To help with identifying available ASOs for exon skipping, we recommend a search term in
 1280 Pubmed like this, text in bold would need to be adjusted for the gene and exon being examined:

1281 **ABCA4 AND ((ASO) OR (AON) OR (antisense oligonucleotide)) AND (Exon 17)**

1282 **Table 4: Classification of variants for their eligibility towards exon skipping.**

Classification	Criteria
Eligible	Evidence that exon skipping does not impair protein function (benign canonical splice site variant leading to exon skipping, benign single exon deletion, naturally occurring transcript does not contain exon, or previously tested ASO with evidence of functional protein product).
Likely eligible	<p>Exon is in-frame</p> <p>AND</p> <p>Exon does NOT result in $\geq 10\%$ loss of protein coding sequence if exon is skipped.</p> <p>AND</p> <p>Exon does not create a stop codon when skipped</p> <p>AND</p> <p>Exon does not code for any functional domains</p> <p>AND</p> <p>None of the exclusion criteria outlined in the “Not eligible” section are met.</p>

Unlikely eligible	<p>Exon is in-frame</p> <p>AND</p> <p>Exon does not create a stop codon when skipped</p> <p>AND</p> <p>{ Exon results in a loss of $\geq 10\%$ of coding transcript if exon is skipped AND/OR exon codes for a <u>single</u> functional domain }</p> <p>AND</p> <p>None of the exclusion criteria outlined in the “Not eligible” section are met</p>
Not eligible ¹¹	<p>Variant is in an out-of-frame exon OR Variant is in first or last coding exon OR Variant is in the ONLY coding exon OR Exon skipping results in a stop codon OR Exon skipping results in the loss of the ONLY functional domain in the protein OR Exon encodes for more than 10% of the proteins AND multiple non-repeat domains OR Exon codes for functionally proven important domains or amino acids (catalytic site, dimerization domain, inhibitory domains, etc.) OR Exon is a known mutational hotspot for (missense) loss-of-function variants OR Functional evidence of exon skipping shown to be pathogenic OR Functional evidence of in-frame deletions shown to be pathogenic OR Evidence that an ASO cannot be developed, shown by two independent investigations at the protein/functional level. Or one investigation with a convincing explanation why an ASO cannot be developed.</p>

1283

¹¹ Exceptions apply here for GoF and DN variants. Please see full text.

1284 Section B - Considerations for Transcript Knockdown

1285 In this section, assessors will be guided on how to assess a variant for eligibility towards
1286 knockdown approaches. As described in the [Background](#), knockdown ASOs/siRNAs can bind to
1287 the target transcript and downregulate (pre-)mRNA expression. Knockdown strategies can be
1288 utilized in cases where the pathomechanism is a result of overexpression, toxic GoF, or DN effects
1289 (Lauffer, van Roon-Mom, Aartsma-Rus, & N = 1 Collaborative, 2024). This section covers the
1290 following topics:

- 1291 1. Considerations for pathomechanism
- 1292 2. Considerations for dosage sensitivity
- 1293 3. Important considerations for different inheritance patterns and pathomechanisms
- 1294 4. Strategies for searching the literature for gapmer ASOs and siRNAs

1295

1296 ***Considerations for Pathomechanisms***

1297 Variants to be considered for knockdown approaches using gapmer ASOs or siRNA are (toxic)
1298 GoF and DN variants and copy number gains. Strategies on how to assess a variant mechanism
1299 are discussed in [Step 2](#). Please ensure you have sufficient evidence of GoF or DN
1300 pathomechanism before proceeding further.

1301

1302 ***Considerations for Dosage Sensitivity***

1303 Before proceeding with the development of a knockdown ASO, it is crucial to consider dosage
1304 sensitivity and/or haploinsufficiency. Ideally, a knockdown strategy would be employed when loss-
1305 of-function is not expected to cause disease. However, such cases are rare. More commonly,
1306 alterations in gene dosage are an underlying cause of disease and must be considered when
1307 developing knockdown ASOs. Here it becomes important to be aware of the different inheritance
1308 patterns that are implicated in a gene.

1309

1310 If complete loss-of-function is not tolerated, but the loss of one gene copy is, knockdowns can still
1311 be considered. Resources such as [PubMed](#), pLI scores, LOEUF scores (both available via
1312 [gnomAD](#)), [DECIPHER dosage sensitivity](#) track (Collins et al., 2022), and [ClinGen dosage](#)
1313 [sensitivity](#) score can be used to determine this. We consider a curation from a reputable,
1314 independent source, such as the ClinGen consortium, the highest level of evidence for dosage
1315 sensitivity.

1316

1317 An indication whether the loss of one allele is tolerated can also be gained from population
1318 databases such as [gnomAD](#); if there are carriers of LoF variants in the general population, it can
1319 be assumed that the loss of one allele is safe.. The same considerations apply for carriers of
1320 homozygous LoF variants within a gene that implies that the complete loss of this gene is
1321 tolerated. Typically, if the loss of one gene copy is not a known cause of disease and has been
1322 observed in healthy cohorts, knockdown ASOs can be considered.

1323

1324 Another factor to consider is haploinsufficiency. As described in [Step 2](#), haploinsufficiency refers
1325 to a situation in which one healthy, wildtype allele does not generate sufficient protein product to
1326 preserve the physiological state (Deutschbauer et al., 2005). One can utilize resources such as
1327 gnomAD's pLI and LOEUF scores and ClinGen's dosage sensitivity score (preferred) to determine
1328 whether haploinsufficiency is a cause of disease. Typically, a pLI score of equal to or greater than

1329 0.9, the top three deciles of LOEUF scores, or a [ClinGen haploinsufficiency score](#) of 3 (sufficient
1330 evidence) indicates haploinsufficiency being a cause of disease (please note that this should be
1331 verified by functional evidence available in the literature). In cases where haploinsufficiency is a
1332 known cause of disease, a knockdown approach should only be considered if the disease caused
1333 by haploinsufficiency is less severe than the disorder associated with the GoF or DN variants.
1334 Though phenotype considerations are beyond the scope of this guideline, one can consider using
1335 [OMIM](#), [PubMed](#), and [GeneReviews](#) to assess the genotype-phenotype relation.

1336
1337 One should also consider whether hypomorphic alleles are a cause of disease. Hypomorphic
1338 alleles are alleles which show partial loss-of-function (sometimes referred to as “leaky” alleles
1339 because there is some retention of protein function). In such cases, it is important to consider
1340 ASO dosage and associated phenotypes, especially if partial loss-of-function is disease causing.

1341
1342 **Important considerations for different inheritance patterns and pathomechanisms**

1343 For diseases that are tolerant to complete loss of function (knockout), targeting both alleles may
1344 be tolerated. The use of an allele-specific ASO targeting a SNP or the variant site should be
1345 considered if changes in gene dosage are a known cause of disease. Though this would greatly
1346 limit the ASO design, allele-specific ASOs in these scenarios would help ensure that at least 50%
1347 of the wildtype function remains (by targeting only the mutant allele).

1348
1349 Another scenario in which allele-specific ASOs should be considered is if the mechanism is
1350 dominant-negative. DN variants impact the wildtype product and therefore may result in a
1351 functional product loss of greater than 50%. Hence, it is critical that an ASO is designed to
1352 specifically target the DN allele while keeping the wildtype product intact to recapitulate as much
1353 function as possible.

1354
1355 In the case of X-linked and Y-linked disorders, further considerations are necessary. For males,
1356 downregulation of a gene on the X or Y chromosome can lead to a complete loss of the gene
1357 function and before embarking on such an approach it should be known that this complete loss is
1358 tolerated. For X-linked disorders in females, it should be considered how X inactivation will affect
1359 gene dosage and whether a knockdown approach is safe.

1360
1361 **ASO Check**

1362 In addition to the recommended assessment strategies, assessors should review the literature for
1363 knockdown ASO/siRNA strategies. This review can be performed either as the final step to
1364 validate the assessment strategy or earlier in the assessment process (see [Step 0](#)). Specifically,
1365 for knockdown ASOs, it is crucial to evaluate whether a knockdown approach has been developed
1366 for other DN or GoF variants in the same gene, and that this approach has been validated at the
1367 RNA and protein level and shown to rescue the phenotype (pre-clinical work is sufficient). Take
1368 note if an allele-specific approach was used, as this may limit ASO design and affect outcomes.
1369 Further, an ASO might have been developed that is specific for a variant other than the one under
1370 assessment or a SNP and information on phasing of an individual’s variant with that SNP will then
1371 have to be obtained. The gene is still “eligible” for knockdown according to the criteria outlined in
1372 [Table 5](#) even if the already available ASO is not suitable for the case under assessment. This
1373 means a new ASO would have to be designed and developed for that case.

1374

1375 In cases of conflicting evidence regarding ASO developments and the feasibility of an ASO
 1376 therapy, consider the quality of the research, the types of experiments conducted, the nature of
 1377 the results shared, and the publication date. The evaluation of literature on existing ASOs should
 1378 be carried out at the assessor's discretion, with a critical and discerning approach.

1379
 1380 To help with identifying available ASOs/siRNA for knockdown approaches, we recommend a
 1381 search term in Pubmed like this, text in bold would need to be adjusted for the gene and variant
 1382 being examined:

1383 **SCN2A** AND ((ASO) OR (AON) OR (antisense oligonucleotide) OR (AOs) OR (siRNA) OR (RNAi)
 1384 OR (gapmer) or (knockdown))

1385 **SCN2A** AND ((ASO) OR (AON) OR (antisense oligonucleotide) OR (AOs) OR (siRNA) OR
 1386 (RNAi)) AND ((**p.R853Q**) OR (**p.Arg853Gln**) OR (**c.2558G>A**))

1387
 1388 Once all this information is collected, one can use [Table 5](#) to classify the variant's eligibility
 1389 towards ASO knockdowns as “eligible”, “likely”, “unlikely”, or “not eligible”.

1390 Variants, where not enough evidence exists on the pathomechanism or the dosage sensitivity
 1391 cannot be assessed until more evidence is collected.

1392 **Table 5: Classification of variant for their eligibility towards knockdown**

Classification	Criteria
Eligible	ASO/RNAi/siRNA has already been developed and shown to work with available functional evidence (i.e., evidence of knockdown rescuing function, pre-clinical data is sufficient)
Likely eligible	Variant is Gain-of-Function or Dominant-Negative (functionally proven) AND { Gene is tolerant to the reduction of gene dosage (i.e., gene is NOT haploinsufficient) AND/OR Individuals with heterozygous LoF variants are present in population databases/described in medical literature, such that high penetrance for probably severe disease phenotypes are unlikely }
Unlikely eligible	Variant is Gain-of-Function or Dominant-Negative (functionally proven) BUT Heterozygous LoF/Haploinsufficiency/Hypomorphic variants has/have been associated with a disease

Not eligible	Intolerant to reduction (i.e., gene dosage is tightly regulated in humans, and knockdown is expected to lead to serious phenotypic consequences) OR Evidence that an ASO cannot be developed, shown by two independent investigations at the protein/functional level. Or one investigation with a convincing explanation why an ASO cannot be developed.
--------------	--

1393
1394
1395
1396
1397
1398

1399

1400

1401

1402

1403

1404

1405

1406

1407

1408

1409

1410

1411

1412

1413

1414

1415

1416

1417

1418 Section C - Considerations for upregulation from the 1419 wildtype allele

1420 For disorders caused by haploinsufficiency, one functional wildtype gene copy remains. In these
1421 situations, one can use ASOs to upregulate the wildtype allele. This approach, also known as
1422 targeted augmentation of nuclear gene output (TANGO), can include skipping of poison exons,
1423 downregulating naturally occurring antisense transcripts, and targeting UTR regulator elements
1424 such as upstream open reading frames, all of which can increase the gene product. For a more
1425 detailed explanation of these approaches, see the [Background](#) and the following publications:

- 1426 1. Lim et al. (2020) <https://doi.org/10.1038/s41467-020-17093-9>
- 1427 2. Mittal et al. (2022) <https://doi.org/10.1016/j.medj.2022.08.006>
- 1428 3. Felker et al. (2023) <https://doi.org/10.1016/j.gim.2023.100884>
- 1429 4. Liu et al. (2022) <https://doi.org/10.1093/nar/gkac1094>

1430
1431 For convenience, the data found in the supplementary tables and databases from the four
1432 aforementioned publications have also been compiled into one excel sheet (Suppl File 4).
1433 Assessors can use this sheet to look up poison exons, naturally occurring antisense transcripts,
1434 and upstream open reading frames found from each of these publications. It is highly encouraged
1435 that assessors do not rely on this one resource alone, but also utilize it in conjunction with the
1436 other strategies discussed below.

1437
1438 Please note that unlike the other ASO strategies, these guidelines will not provide details on how
1439 to classify variants as “likely”, “unlikely”, or “not eligible”. The upregulation of wildtype transcripts
1440 through the aforementioned strategies heavily depends on the availability of functional evidence
1441 for key regulatory elements. These strategies are not comparable to one another, and different
1442 approaches must be employed depending on the availability of regulatory elements. Instead,
1443 readers can reference this section to learn about the different strategies and resources they can
1444 utilize for their own analyses. However, in case the case of a wildtype upregulation approach has
1445 already been established for a given gene with sufficient functional evidence, we consider a
1446 variant as “eligible” toward wildtype upregulation. This section covers:

- 1447 1. Targeting naturally occurring antisense transcripts
- 1448 2. Targeting upstream open reading frames
- 1449 3. Targeting poison exons and non-productive alternative splicing events

1450 1451 **Naturally Occurring Antisense Transcripts**

1452 Through downregulating naturally occurring antisense transcripts via gapmer ASOs, it is possible
1453 to upregulate gene expression ([Fig. 3](#)). Assessors can utilize resources such as [PubMed](#), [UCSC](#)
1454 [Genome Browser](#), [HUGO Gene Nomenclature Committee](#), and [Ensembl](#) to search for known
1455 antisense transcripts for a given gene. Additionally, the supplemental table 2 in the paper by Mittal
1456 et al. (2022) has listed all antisense transcripts the authors have identified. Assessors should also
1457 consider the level at which these antisense transcripts are expressed in the tissue of interest.
1458 Databases such as [GTEx](#) and the [Human Protein Atlas](#) can assist with this. Note that the
1459 existence of an antisense transcripts alone is not enough to consider an ASO development.
1460 Factors such as tissue expression, regulatory function, and orientations of the antisense
1461 transcripts must be well understood before considering this approach.

1462 **Upstream Open Reading Frames**

1463 An ASO can be designed to targets the regulatory elements in untranslated regions, including
1464 uORFs ([Fig. 3](#)). Resources such as [PubMed](#) and [Ribo-uORF](#) can be used to check whether there
1465 is a uORF that can be targeted. Additionally, the supplemental table 2 in the paper by Mittal et al.
1466 (2022) indicates for which genes uORFs have been identified. Note that not all uORFs act through
1467 an inhibitory mechanism, and proper characterization of their mechanism is essential in
1468 determining their eligibility as ASO targets. Another possible approach is skipping an exon in the
1469 UTR that contains a uORF.

1470

1471 **Poison Exons and Non-Productive Alternate Splicing Events**

1472 One can design ASOs which target non-productive alternate splicing events including poison
1473 exons ([Fig. 3](#)). These ASOs would utilize the splice-switching approaches described in the splice-
1474 correction and exon skipping sections to promote canonical splicing of the wildtype transcript.
1475 Resources such as [PubMed](#), [Ensembl](#), [VastDB](#), and the [UCSC Genome Browser](#) can aid in
1476 determining alternate splicing events in the transcript of interest. Additionally, supplemental table
1477 2 from Mittal et al. (2022), supplemental data 2 from Lim et al. (2020), and supplemental data 1
1478 from Felker et al. (2023) lists all identified poison exons in these papers. Databases such as [GTEx](#)
1479 can further assist by determining the expression level of alternate transcripts in the target tissue.
1480 Note that some alternate splicing events are crucial for the production of important transcripts and
1481 isoforms.

1482

1483 For more resources and strategies on upregulating wildtype gene product, please reference the
1484 [Useful Tools](#) section.

1485

1486 **Important considerations for different inheritance patterns and pathomechanisms**

1487 The considerations outlined here are mainly applicable to diseases associated with
1488 haploinsufficiency, which is most likely caused by LoF variants in AD disorders. In rare cases,
1489 one could also consider applying upregulation of wildtype allele strategies in X-linked disorders in
1490 females where there is sufficient evidence that upregulation from the second X chromosome is
1491 possible. Please always consider challenges caused due to X inactivation.

1492

1493 **ASO Check**

1494 Also for the upregulation of wildtype allele approaches, one can search whether specific
1495 strategies already exist, are under development or pursued in clinical trials. Multiple strategies
1496 can be utilized to upregulate gene product from wildtype transcripts, and it is therefore important
1497 to employ a variety of strategies/approaches in the search terms to ensure a comprehensive
1498 review of the field.

1499 While we do not classify the different upregulation approaches, we consider a case/variant as
1500 “eligible” for upregulation if an upregulation strategy has been developed and demonstrated to
1501 work with sufficient evidence.

1502

1503

1504 Addendum

1505 Summary “Unable to assess”

1506 A variant is classified “unable to assess” when:

- 1507 - The variant does not fall into the category of variants for these guidelines, e.g.
- 1508 translocations, variants in non-coding genes
- 1509 - The variant description is incorrect
- 1510 - The inheritance pattern is not known
- 1511 - The pathomechanism of the variant is not known
- 1512 - Not enough information on dosage sensitivity available (for knockdown)
- 1513 - Loss of both copies of a gene due to large/whole gene deletions
- 1514 - Intronic variant without sufficient functional information on splicing

1515 Examples

1516 The below examples provide variant assessments for different types of variants. Detailed
 1517 explanations for all the examples can be found in the accompanying training videos (via [YouTube](#)
 1518 or the [N1C website](#)).

1519 To further practice variant assessments, we encourage new assessors to use the test variants in
 1520 Suppl File 2 and later check the answer keys in Suppl File 3.

1521 Table 6: Example variants and their assessments

#	Variant and Video Content	Assessment
1	NM_000350.3(ABCA4):c.2626C>T p.(Gln876Ter) Corresponding video content: <ul style="list-style-type: none"> • Nomenclature check using Mutalyzer • Searching UCSC to determine exon number • Searching PubMed for exon skipping ASO • Recommendations for continued analysis 	Eligibility: Eligible for exon skipping ASO Explanation: Correct variant description, variant is loss of function in a recessive disorder. Variant is >15 bp downstream of the nearest splice site and is a nonsense variant considered for exon skipping. Variant is located in exon 17/50 in the <i>ABCA4</i> gene, exon is a small, in-frame exon. Skipping of in-frame exon 17 has been shown in pre-clinical studies (Kaltak et al., 2023).
2	NM_016589.4(TIMMD1):c.597-1340A>G Corresponding video content: <ul style="list-style-type: none"> • Nomenclature check using VariantValidator (and example output of incorrect variant) 	Eligibility: Eligible for splice correction ASO Explanation: Correct variant description, variant is loss of function in a recessive gene. Variant is deep intronic and >100 bp from the nearest splice site. Variant has been reported multiple times and the effect on splicing has

	<ul style="list-style-type: none"> Searching PubMed for splice-switching ASO 	<p>been confirmed via RNAseq (Kremer et al., 2017).</p> <p>Variant causes the insertion of a cryptic exon and a premature stop.</p> <p>Pre-clinical data is available that shows evidence of rescue of enzymatic effects upon ASO treatment (Kumar et al., 2022).</p>
3	<p>NM_000533.5(PLP1):c.680dup p.(Cys228LeufsTer5)</p> <p>Corresponding video content:</p> <ul style="list-style-type: none"> Checking inheritance patterns using OMIM Checking variant mechanism using GeneReviews Using UCSC genome browser to determine exon position Using ExonViz to determine exon frame 	<p>Eligibility: Not eligible for exon skipping ASO</p> <p>Explanation: Correct variant description, X-linked recessive gene, frameshift variant leading to an early stop can only be considered for exon skipping (Section A). Variant >15 bp upstream of nearest splice site. Exon 5/7 is out-of-frame and thus not eligible.</p>
4	<p>NM_003793.4(CTSF):c.213+1G>C</p> <p>Corresponding video content:</p> <ul style="list-style-type: none"> Checking inheritance patterns using OMIM Checking variant mechanism using ClinVar Assessing splicing effects of variants through a literature search 	<p>Eligibility: Not eligible for splice correction ASO</p> <p>Explanation: Correct variant description, autosomal recessive gene. Variant is a canonical splice site variant and was shown to lead to skipping of exon 1, leading to disease (Di Fabio et al., 2014). Variant is within 5 bp of canonical splice site.</p>
5	<p>NM_000277.3(PAH):c.611A>G p.(Tyr204Cys)</p> <p>Corresponding video content:</p> <ul style="list-style-type: none"> Checking inheritance patterns using OMIM Checking variant mechanisms using OMIM and a literature search Assessing splicing effects of variants through a literature search Assessing effects of missense variant through a literature search Checking the position of the variant respective to canonical splice sites using UCSC 	<p>Eligibility: Unlikely for splice correction ASO</p> <p>Explanation: Correct variant description, variant is in a recessive gene, variant is a missense variant with evidence of effect on splicing.</p> <p>Variant affects mRNA splicing and results in a 32-amino acid deletion of the PAH enzyme (Ellingsen, Knappskog, & Eiken, 1997). Variant is classified as unlikely since Ellingsen et al. could only identify a small change in enzymatic activity when generating the enzyme with the missense variant.</p>

6	<p>NM_025152.3(NUBPL):c.815-27T>C</p> <p>Corresponding video content:</p> <ul style="list-style-type: none"> • Checking inheritance patterns using OMIM • Assessing variant mechanisms and splicing effects through a literature search 	<p>Eligibility: Unlikely eligible for splice correction ASO</p> <p>Explanation: Correct variant description. Variant associated with autosomal recessive disorder. Variant is intronic with evidence of effect on splicing.</p> <p>Variant is not within 5bp of the canonical splice site, but in the 5 to 100 bp region. Variant affects a branchpoint. The branchpoint is weakened but not destroyed (30% of wildtype transcript remains) (Maclean, Kimonis, & Balk, 2018). Therefore, this variant is unlikely eligible for splice correction ASO.</p>
7	<p>NM_024312.5(GNPTAB):c.3503_3504del p.(Leu1168fs)</p> <p>Corresponding video content:</p> <ul style="list-style-type: none"> • Searching the literature for an already existing ASO • Checking inheritance patterns using OMIM • Assessing variant mechanisms and eligibility for exon-skipping using the literature 	<p>Eligibility: Unlikely eligible for exon skipping ASO</p> <p>Explanation: Correct variant description. ASO exists but has only been validated at the RNA level (not the protein level). Variant is associated with autosomal recessive disorder and is loss-of-function.</p> <p>Variant is in exon 19/21. Exon is in-frame and codes for 4.5% of the coding transcript. A stop codon does not form when exon is skipped. Exon codes for a stealth domain, but does not meet any of the exclusion criteria in Table 3 (Matos et al., 2020). Therefore, this variant is unlikely eligible for an exon skipping ASO.</p>
8	<p>NM_001040142.2(SCN2A):c.5645G>A p.(R1882Q)</p> <p>Corresponding video content:</p> <ul style="list-style-type: none"> • Nomenclature check using variant validator • Inheritance pattern check using OMIM • Pathomechanism check using ClinVar and by conducting a literature search • Dosage sensitivity assessment using ClinGen, pLI, and the literature • Conducting an ASO check 	<p>Eligibility: Eligible for knockdown</p> <p>Explanation: Correct variant description. ASO exists and has been validated clinically. Variant is associated with an autosomal dominant gain-of-function disorder.</p> <p>Haploinsufficiency and loss-of-function is also a known cause of disease, but is arguably associated with less severe phenotypes. Variant classified as “eligible” because preclinical evidence of knockdown approach exists.</p>

9	<p>NM_001165963.4(SCN1A):c.3733C>T p.(R1245Ter)</p> <p>Corresponding video content:</p> <ul style="list-style-type: none"> ● Nomenclature check using variant validator ● Inheritance pattern check using OMIM ● Pathomechanism check using ClinVar ● Dosage sensitivity assessment using ClinGen and pLI ● Checking for upregulation (i.e. TANGO) methods using the literature ● Conducting an ASO check ● Brief discussion on other upregulation of wildtype allele approaches using NM_130839.5 (UBE3A):c.67C>T, p.(Arg23*) as an example 	<p>Eligibility: Eligible for upregulation of wildtype allele</p> <p>Explanation: Correct variant description. ASO exists and has been clinically validated. Variant is associated with autosomal dominant loss-of-function disorder. Haploinsufficiency and loss-of-function is a known cause of disease.</p> <p>Variant is found in an exon not eligible for canonical exon skipping.</p> <p>Poison exons identified in the literature, and have been clinically validated.</p>
10	<p>NM_003793.4(CTSF):c.264del p.(Cys89fs)</p> <p>Corresponding video content:</p> <ul style="list-style-type: none"> ● Checking inheritance patterns using OMIM ● Checking variant mechanism using ClinVar ● Using UCSC genome browser to determine exon position ● Using ExonViz and Ensembl to determine exon frame ● Using RefSeq and UniProt to determine exon size ● Using UniProt to assess corresponding protein function ● Recommendations for continued analysis 	<p>Eligibility: Likely eligible for exon skipping ASO</p> <p>Explanation: Correct variant description, autosomal recessive gene, variant is a frameshift variant, thus can only be assessed for exon skipping (Section A). Exon 2/13 is in-frame, approx. 7% of the protein coding region. Skipping of exon does not create a stop codon. No functional domain is known and no mutational hotspot identified.</p>
11	<p>NM_000170.3(GLDC):c.538C>T p.(Gln285Ter)</p> <p>Corresponding video content:</p> <ul style="list-style-type: none"> ● Inheritance pattern check using OMIM 	<p>Eligibility: Not eligible for exon skipping</p> <p>Explanation: Variant description is correct. Variant is associated with autosomal recessive loss-of-function disorder. Variant is not in the first or last codon exon. Variant is not in an out-</p>

	<ul style="list-style-type: none"> • Pathomechanism check using ClinVar • Using UCSC genome browser to determine exon position and frame • Using UCSC to check whether exon skipping forms a stop codon 	of-frame exon. However, variant is found in an exon which will form a stop codon if skipped, and the two neighboring exons join together. Therefore, this variant is not eligible towards canonical exon skipping ASOs.
12	<p>Unable to Assess Examples</p> <p>Corresponding video content:</p> <ul style="list-style-type: none"> • Example of a mitochondrial variant • Example of incorrect variant notation • Example of a missense variant with an unknown pathomechanism 	<p>Eligibility: Unable to assess</p> <p>All variants discussed in the video are ineligible for assessment either because they are unable to be assessed by these specific guidelines, or not enough information is available to proceed with assessment.</p>

1522 Useful Tools

1523 This is a collection of tools that can be useful during variant assessment. Most of them are already
1524 listed throughout the text. Tools are listed matching the different steps of these guidelines.

1525 **Step 0 - Variant check**

1526 HGVS nomenclature: <https://varnomen.hgvs.org/>

1527 Mutalyzer: <https://mutalyzer.nl/> (cannot do deep intronic variants in c. notation but works with g.
1528 notation)

1529 VariantValidator: <https://variantvalidator.org/>

1530

1531 **Step 1 - Assessment of pattern of inheritance and disease type**

1532 Gene Cards: <http://www.genecards.org/>

1533 OMIM: <https://omim.org/>

1534 Gene Reviews: <https://www.ncbi.nlm.nih.gov/books/NBK11116/>

1535 Orphanet: <https://www.orpha.net/en/disease>

1536 Monarch Initiative: <https://monarchinitiative.org>

1537 Gene Curation Coalition: <https://thegencc.org/>

1538 ClinGen: <https://www.clinicalgenome.org/>

1539 gnomAD: <https://gnomad.broadinstitute.org/> (population frequency of a variant)

1540 DisGeNet: <https://www.disgenet.org/>

1541 Gene2Phenotype: <https://www.ebi.ac.uk/gene2phenotype>

1542

1543 **Step 2 - Assessment of pathomechanism of genetic variant**

1544 HGMD: <https://www.hgmd.cf.ac.uk/>

1545 DECIPHER: www.deciphergenomics.org/

1546 ClinVar: <https://www.ncbi.nlm.nih.gov/clinvar/>

1547 Mastermind Genomenon: <https://mastermind.genomenon.com/>
1548 Pubmed: <https://pubmed.ncbi.nlm.nih.gov/>
1549 Franklin: <https://franklin.genoox.com/clinical-db/home>
1550 LOVD: <https://www.lovd.nl/>
1551 Varsome: <https://varsome.com/>

1552

1553 **Step 3 - Evaluation of splicing effects**

1554 HGMD: <https://www.hgmd.cf.ac.uk/>
1555 DECIPHER: <https://www.deciphergenomics.org/>
1556 ClinVar: <https://www.ncbi.nlm.nih.gov/clinvar/>
1557 Mastermind Genomenon: <https://mastermind.genomenon.com/>
1558 Pubmed: <https://pubmed.ncbi.nlm.nih.gov/>
1559 Search engine → web-search the variant

1560

1561 **Section A - Considerations for canonical exon skipping**

1562 UCSC Genome Browser: <https://genome.ucsc.edu/>
1563 ExonViz: <https://exonviz.matherapy.nl/>
1564 Ensembl: <https://www.ensembl.org/index.html>
1565 Metadome: <https://stuart.radboudumc.nl/metadome/>
1566 UniProt: <https://www.uniprot.org/>
1567 Protein Database: <https://www.rcsb.org/>
1568 Alphafold: <https://alphafold.ebi.ac.uk/>
1569 ES-NDD: <https://es-ndd.broadinstitute.org/>
1570 Franklin: <https://franklin.genoox.com/clinical-db/home>
1571 ExonSkip DB: <https://ccsm.uth.edu/ExonSkipDB/>

1572

1573 **Section B - Considerations for Downregulation**

1574 gnomAD for pLI and Loef: <https://gnomad.broadinstitute.org/>
1575 Dosage sensitivity map: [UCSC Genome Browser: News Archives](#)
1576 ClinGen dosage sensitivity curation: <https://search.clinicalgenome.org/kb/gene-dosage?page=1&size=25&search=>
1577 <https://search.clinicalgenome.org/kb/gene-dosage?page=1&size=25&search=>
1578 DECIPHER dosage sensitivity track:
1579 <https://genome.ucsc.edu/goldenPath/newsarch.html#022124>

1580

1581 **Section C - Considerations for upregulation from the wildtype allele**

1582 Antisense transcripts via HUGO: [Search results | HUGO Gene Nomenclature Committee \(genenames.org\)](#)
1583 [Search results | HUGO Gene Nomenclature Committee \(genenames.org\)](#)
1584 Ribo uORF: <https://rnainformatics.org.cn/RiboUORF/>
1585 GTEX: <https://gtexportal.org/home/transcriptPage>
1586 VastDB: https://vastdb.crg.eu/wiki/Main_Page

1587

1588 **Further tools**

1589 MobiDetails: <https://mobidetails.iurc.montp.inserm.fr/MD/>
1590 ProteinPaint: <https://proteinpaint.stjude.org/>
1591 Proteinatlas: <http://www.proteinatlas.org/>
1592 FLIbase - Full length isoforms in cancers and normal tissues: <http://flibase.org/#/home>

1593 Abbreviations

1594	AD	autosomal dominant
1595	AR	autosomal recessive
1596	ASO	Antisense Oligonucleotide
1597	CNV	copy number variant
1598	DN	dominant negative
1599	GoF	gain of function
1600	HGVS	Human Genome Variation Society
1601	LoF	loss of function
1602	NMD	nonsense mediated decay
1603	ORF	open reading frame
1604	pORF	primary open reading frame
1605	SE	splice enhancer
1606	siRNA	small interfering RNA
1607	SNP	Single nucleotide polymorphism
1608	SS	splice silencer
1609	TANGO	targeted augmentation of nuclear gene output
1610	uORF	upstream open reading frame
1611	UTR	untranslated region
1612	WT	wildtype
1613		
1614		
1615		
1616		

1617 References

- 1618 Aartsma-Rus, A., Garanto, A., van Roon-Mom, W., McConnell, E. M., Suslovitch, V., Yan, W. X.,
1619 . . . Yu, T. W. (2023). Consensus guidelines for the design and in vitro preclinical efficacy
1620 testing N-of-1 exon skipping antisense oligonucleotides. *Nucleic Acid Therapeutics*, 33(1),
1621 17-25. doi:10.1089/nat.2022.0060
- 1622 Abou Tayoun, A. N., Pesaran, T., DiStefano, M. T., Oza, A., Rehm, H. L., Biesecker, L. G., . . .
1623 ClinGen Sequence Variant Interpretation Working Group (ClinGen, SVI). (2018).
1624 Recommendations for interpreting the loss of function PVS1 ACMG/AMP variant criterion.
1625 *Human Mutation*, 39(11), 1517-1524. doi:10.1002/humu.23626
- 1626 Anna, A., & Monika, G. (2018). Splicing mutations in human genetic disorders: Examples,
1627 detection, and confirmation. *Journal of Applied Genetics*, 59(3), 253-268.
1628 doi:10.1007/s13353-018-0444-7
- 1629 Aspden, J. L., Wallace, E. W. J., & Whiffin, N. (2023). Not all exons are protein coding: Addressing
1630 a common misconception. *Cell Genomics*, 3(4), 100296. doi:10.1016/j.xgen.2023.100296
- 1631 Backwell, L., & Marsh, J. A. (2022). Diverse molecular mechanisms underlying pathogenic protein
1632 mutations: Beyond the loss-of-function paradigm. *Annual Review of Genomics and Human*
1633 *Genetics*, 23(1), 475-498. doi:10.1146/annurev-genom-111221-103208
- 1634 Cavaco, B. M., Canaff, L., Nolin-Lapalme, A., Vieira, M., Silva, T. N., Saramago, A., . . . Hendy,
1635 G. N. (2018). Homozygous calcium-sensing receptor polymorphism R544Q presents as
1636 hypocalcemic hypoparathyroidism. *The Journal of Clinical Endocrinology and Metabolism*,
1637 103(8), 2879-2888. doi:10.1210/jc.2017-02407

1638 Collins, R. L., Glessner, J. T., Porcu, E., Lepamets, M., Brandon, R., Lauricella, C., . . . Talkowski,
1639 M. E. (2022). A cross-disorder dosage sensitivity map of the human genome. *Cell*, *185*(16),
1640 3041-3055.e25. doi:10.1016/j.cell.2022.06.036

1641 Deutschbauer, A. M., Jaramillo, D. F., Proctor, M., Kumm, J., Hillenmeyer, M. E., Davis, R. W., .
1642 . . Giaever, G. (2005). Mechanisms of haploinsufficiency revealed by genome-wide profiling
1643 in yeast. *Genetics*, *169*(4), 1915-1925. doi:10.1534/genetics.104.036871

1644 Dhuri, K., Bechtold, C., Quijano, E., Pham, H., Gupta, A., Vikram, A., & Bahal, R. (2020).
1645 *Antisense oligonucleotides: An emerging area in drug discovery and development* MDPI AG.
1646 doi:10.3390/jcm9062004

1647 Di Fabio, R., Moro, F., Pestillo, L., Meschini, M. C., Pezzini, F., Doccini, S., . . . Santorelli, F. M.
1648 (2014). Pseudo-dominant inheritance of a novel CTSF mutation associated with type B kufs
1649 disease. *Neurology*, *83*(19), 1769-1770. doi:10.1212/WNL.0000000000000953

1650 Drutman, S. B., Haerynck, F., Zhong, F. L., Hum, D., Hernandez, N. J., Belkaya, S., . . . Casanova,
1651 J. (2019). Homozygous NLRP1 gain-of-function mutation in siblings with a syndromic form
1652 of recurrent respiratory papillomatosis. *Proceedings of the National Academy of Sciences of*
1653 *the United States of America*, *116*(38), 19055-19063. doi:10.1073/pnas.1906184116

1654 Duan, D. (2016). Dystrophin gene replacement and gene repair therapy for duchenne muscular
1655 dystrophy in 2016: An interview. *Human Gene Therapy.Clinical Development*, *27*(1), 9-18.
1656 doi:10.1089/humc.2016.001

1657 Duan, D., Goemans, N., Takeda, S., Mercuri, E., & Aartsma-Rus, A. (2021). Duchenne muscular
1658 dystrophy. *Nature Reviews Disease Primers*, *7*(1), 13. doi:10.1038/s41572-021-00248-3

1659 Egli, M., & Manoharan, M. (2023). Chemistry, structure and function of approved oligonucleotide
1660 therapeutics. *Nucleic Acids Research*, *51*(6), 2529-2573. doi:10.1093/nar/gkad067

1661 Ellingsen, S., Knappskog, P. M., & Eiken, H. G. (1997). Phenylketonuria splice mutation
1662 (EXON6nt-96Ag) masquerading as missense mutation (Y204C). *Human Mutation*, 9(1), 88-
1663 90. doi:10.1002/(SICI)1098-1004(1997)9:1

1664 Felker, S. A., Lawlor, J. M. J., Hiatt, S. M., Thompson, M. L., Latner, D. R., Finnila, C. R., . . .
1665 Cooper, G. M. (2023). Poison exon annotations improve the yield of clinically relevant
1666 variants in genomic diagnostic testing. *Genetics in Medicine*, 25(8), 100884.
1667 doi:10.1016/j.gim.2023.100884

1668 Flanagan, S. E., Dűng, V. C., Houghton, J. A. L., De Franco, E., Ngoc, C. T. B., Damhuis, A., . . .
1669 Ellard, S. (2017). An ABCC8 nonsense mutation causing neonatal diabetes through altered
1670 transcript expression. *Journal of Clinical Research in Pediatric Endocrinology*, 9(3), 260–264.
1671 doi:10.4274/jcrpe.4624

1672 Gao, Q. Q., & McNally, E. M. (2015). The dystrophin complex: Structure, function, and implications
1673 for therapy. *Comprehensive Physiology*, 5(3), 1223-1239. doi:10.1002/cphy.c140048

1674 Haque, B., Cheerie, D., Birkadze, S., Xu, A. L., Nalpathamkalam, T., Thiruvahindrapuram, B., . . .
1675 . Costain, G. (2024). Estimating the proportion of nonsense variants undergoing the newly
1676 described phenomenon of manufactured splice rescue. *European Journal of Human
1677 Genetics*, 32(2), 238-242. doi:10.1038/s41431-023-01495-6

1678 Kaltak, M., Blanco-Garavito, R., Molday, L. L., Dhaenens, C., Souied, E. E., Platenburg, G., . . .
1679 Cremers, F. P. M. (2023). Stargardt disease-associated in-frame ABCA4 exon 17 skipping
1680 results in significant ABCA4 function. *Journal of Translational Medicine*, 21(1), 546.
1681 doi:10.1186/s12967-023-04406-x

1682 Khorkova, O., Stahl, J., Joji, A., Volmar, C., Zeier, Z., & Wahlestedt, C. (2022). Natural antisense
1683 transcripts as drug targets. *Frontiers in Molecular Biosciences*, 9, 978375.
1684 doi:10.3389/fmolb.2022.978375

1685 Kim, J., Hu, C., Moufawad El Achkar, C., Black, L. E., Douville, J., Larson, A., . . . Yu, T. W.
1686 (2019). Patient-customized oligonucleotide therapy for a rare genetic disease. *The New*
1687 *England Journal of Medicine*, 381(17), 1644-1652. doi:10.1056/NEJMoa1813279

1688 Kremer, L. S., Bader, D. M., Mertes, C., Kopajtich, R., Pichler, G., Iuso, A., . . . Prokisch, H. (2017).
1689 Genetic diagnosis of mendelian disorders via RNA sequencing. *Nature Communications*,
1690 8(1), 15824. doi:10.1038/ncomms15824

1691 Kumar, R., Corbett, M. A., Smith, N. J. C., Hock, D. H., Kikhtyak, Z., Semcesen, L. N., . . . Gecz,
1692 J. (2022). Oligonucleotide correction of an intronic TIMMDC1 variant in cells of patients with
1693 severe neurodegenerative disorder. *Npj Genomic Medicine*, 7(1), 9. doi:10.1038/s41525-
1694 021-00277-7

1695 Lauffer, M. C., van Roon-Mom, W., Aartsma-Rus, A., & N = 1 Collaborative. (2024). Possibilities
1696 and limitations of antisense oligonucleotide therapies for the treatment of monogenic
1697 disorders. *Communications Medicine*, 4(1), 6-1. doi:10.1038/s43856-023-00419-1

1698 Li, M., Jancovski, N., Jafar-Nejad, P., Burbano, L. E., Rollo, B., Richards, K., . . . Petrou, S. (2021).
1699 Antisense oligonucleotide therapy reduces seizures and extends life span in an SCN2A gain-
1700 of-function epilepsy model. *The Journal of Clinical Investigation*, 131(23), e152079. doi:
1701 10.1172/JCI152079. doi:10.1172/JCI152079

1702 Liang, X., Sun, H., Shen, W., Wang, S., Yao, J., Migawa, M. T., . . . Crooke, S. T. (2017). Antisense
1703 oligonucleotides targeting translation inhibitory elements in 5' UTRs can selectively increase
1704 protein levels. *Nucleic Acids Research*, 45(16), 9528–9546. doi:10.1093/nar/gkx632

1705 Lim, K. H., Han, Z., Jeon, H. Y., Kach, J., Jing, E., Weyn-Vanhentenryck, S., . . . Aznarez, I.
1706 (2020). Antisense oligonucleotide modulation of non-productive alternative splicing
1707 upregulates gene expression. *Nature Communications*, *11*(1), 3501. doi:10.1038/s41467-
1708 020-17093-9

1709 Lin, J., Wu, H., Zou, W., Masson, E., Fichou, Y., Le Gac, G., . . . Chen, J. (2021). Splicing
1710 outcomes of 5' splice site GT>GC variants that generate wild-type transcripts differ
1711 significantly between full-length and minigene splicing assays. *Frontiers in Genetics*, *12*,
1712 701652. doi:10.3389/fgene.2021.701652

1713 Liu, Q., Peng, X., Shen, M., Qian, Q., Xing, J., Li, C., & Gregory, R. I. (2022). Ribo-uORF: A
1714 comprehensive data resource of upstream open reading frames (uORFs) based on ribosome
1715 profiling. *Nucleic Acids Research*, *51*(D1), D248-D261. doi:10.1093/nar/gkac1094

1716 Maclean, A. E., Kimonis, V. E., & Balk, J. (2018). Pathogenic mutations in NUBPL affect complex
1717 I activity and cold tolerance in the yeast model *yarrowia lipolytica*. *Human Molecular*
1718 *Genetics*, *27*(21), 3697-3709. doi:10.1093/hmg/ddy247

1719 Mahmoud, M., Gobet, N., Cruz-Dávalos, D. I., Mounier, N., Dessimoz, C., & Sedlazeck, F. J.
1720 (2019). Structural variant calling: The long and the short of it. *Genome Biology*, *20*(1), 246-
1721 7. doi:10.1186/s13059-019-1828-7

1722 Matos, L., Vilela, R., Rocha, M., Santos, J. I., Coutinho, M. F., Gaspar, P., . . . Alves, S. (2020).
1723 Development of an antisense oligonucleotide-mediated exon skipping therapeutic strategy
1724 for mucopolidosis II: Validation at RNA level. *Human Gene Therapy*, *31*(13-14), 775-783.
1725 doi:10.1089/hum.2020.034

1726 Mittal, S., Tang, I., & Gleeson, J. G. (2022). Evaluating human mutation databases for “treatability”
1727 using patient-customized therapy. *Med*, *3*(11), 740-759. doi:10.1016/j.medj.2022.08.006

1728 Mohammadi, N. A., Ahring, P. K., Yu Liao, V. W., Chua, H. C., Ortiz de la Rosa, S., Johannesen,
1729 K. M., . . . Møller, R. S. (2024). Distinct neurodevelopmental and epileptic phenotypes
1730 associated with gain- and loss-of-function *GABRB2* variants. *eBioMedicine*, 106
1731 doi:10.1016/j.ebiom.2024.105236

1732 Mohassel, P., Donkervoort, S., Lone, M. A., Nalls, M., Gable, K., Gupta, S. D., . . . Bönnemann,
1733 C. G. (2021). Childhood amyotrophic lateral sclerosis caused by excess sphingolipid
1734 synthesis. *Nature Medicine*, 27(7), 1197-1204. doi:10.1038/s41591-021-01346-1

1735 Morales, J., Pujar, S., Loveland, J. E., Astashyn, A., Bennett, R., Berry, A., . . . Murphy, T. D.
1736 (2022). A joint NCBI and EMBL-EBI transcript set for clinical genomics and research. *Nature*,
1737 604(7905), 310-315. doi:10.1038/s41586-022-04558-8

1738 Oh, R. Y., AlMail, A., Cheerie, D., Guirguis, G., Hou, H., Yuki, K. E., . . . Costain, G. (2024). A
1739 systematic assessment of the impact of rare canonical splice site variants on splicing using
1740 functional and in silico methods. *Human Genetics and Genomics Advances*, 5(3), 100299.
1741 doi:10.1016/j.xhgg.2024.100299

1742 Richards, S., Aziz, N., Bale, S., Bick, D., Das, S., Gastier-Foster, J., . . . ACMG Laboratory Quality
1743 Assurance Committee. (2015). Standards and guidelines for the interpretation of sequence
1744 variants: A joint consensus recommendation of the american college of medical genetics and
1745 genomics and the association for molecular pathology. *Genetics in Medicine : Official Journal
1746 of the American College of Medical Genetics*, 17(5), 405-424. doi:10.1038/gim.2015.30

1747 Rinaldi, C., & Wood, M. J. A. (2017). *Antisense oligonucleotides: The next frontier for treatment
1748 of neurological disorders* Springer Science and Business Media LLC.
1749 doi:10.1038/nrneurol.2017.148

1750 Sasaki, S., Sun, R., Bui, H., Crosby, J. R., Monia, B. P., & Guo, S. (2019). Steric inhibition of 5'
1751 UTR regulatory elements results in upregulation of human CFTR. *Molecular Therapy*, 27(10),
1752 1749–1757. doi:10.1016/j.ymthe.2019.06.016

1753 Schwarz, J., Pedrazza, L., Stenzel, W., Luis Rosa, J., Schuelke, M., Strasbourg, R. (2020). A new
1754 homozygous HERC1 gain-of-function variant in MDFPMR syndrome leads to mTORC1
1755 hyperactivation and reduced autophagy during cell catabolism. *Molecular Genetics and*
1756 *Metabolism*, 131(1), 126-134. doi: 10.1016/j.ymgme.2020.08.008

1757 Singh, N. N., Lee, B. M., DiDonato, C. J., & Singh, R. N. (2015). Mechanistic principles of
1758 antisense targets for the treatment of spinal muscular atrophy. *Future Medicinal Chemistry*,
1759 7(13), 1793-1808. doi:10.4155/fmc.15.101

1760 van den Berg, R. R., Lauffer, M. C., & Laros, J. F. J. (2024). ExonViz: A website and python
1761 package to visualize transcripts and genetic variants. *medRxiv*, 2024.09.18.24313945.
1762 doi:10.1101/2024.09.18.24313945

1763 Wagnon, J. L., Barker, B. S., Ottolini, M., Park, Y., Volkheimer, A., Valdez, P., . . . Meisler, M. H.
1764 (2017). Loss-of-function variants of SCN8A in intellectual disability without seizures.
1765 *Neurology.Genetics*, 3(4), e170. doi:10.1212/NXG.0000000000000170

1766 Walker, L. C., Hoya, M. d. I., Wiggins, G. A. R., Lindy, A., Vincent, L. M., Parsons, M. T., . . .
1767 ClinGen Sequence Variant Interpretation Working Group. (2023). Using the ACMG/AMP
1768 framework to capture evidence related to predicted and observed impact on splicing:
1769 Recommendations from the ClinGen SVI splicing subgroup. *American Journal of Human*
1770 *Genetics*, 110(7), 1046-1067. doi:10.1016/j.ajhg.2023.06.002

1771 Wishner, B. C., Ward, K. B., Lattman, E. E., & Love, W. E. (1975). Crystal structure of sickle-cell
1772 deoxyhemoglobin at 5 Å resolution. *Journal of Molecular Biology*, 98(1), 179-194.
1773 doi:10.1016/s0022-2836(75)80108-2

1774 Xie, J., Wang, L., & Lin, R. (2023). Variations of intronic branchpoint motif: Identification and
1775 functional implications in splicing and disease. *Communications Biology*, 6(1), 1142.
1776 doi:10.1038/s42003-023-05513-7

1777

1778

1779

1780