

Investigating the oxidative stress–vascular brain injury axis in mild cognitive impairment of the Alzheimer type

Flavie E. Detcheverry^{1,2,3,4*}, Sneha Senthil^{5,6*}, Winnie L.K. Motue^{5,6}, Chris Hosein^{6,7},
Rozie Arnaoutelis^{5,6}, David Araujo^{5,6}, Dumitru Fetco^{5,6}, Haz-Edine Assemblal^{5,6},
Samson Antel^{5,6}, Douglas L. Arnold^{5,6}, Jamie Near⁸, Hyman M. Schipper^{6,7},
AmanPreet Badhwar^{1,2,3,4**}, Sridar Narayanan^{5,6**}

¹Multiomics Investigation of Neurodegenerative Diseases (MIND) lab, Montreal, QC, Canada;

²Department of Pharmacology and Physiology, Faculty of Medicine, University of Montreal, Montreal, QC, Canada; ³Institute of Biomedical Engineering, University of Montreal, Montreal, QC, Canada; ⁴Centre de Recherche de l'Institut Universitaire de Gériatrie de Montréal (CRIUGM), Montreal, QC, Canada; ⁵McConnell Brain Imaging Centre, Montreal Neurological Institute, Montreal, QC, Canada; ⁶Department of Neurology and Neurosurgery, McGill University, Montreal, QC, Canada; ⁷Lady Davis Institute, Jewish General Hospital, Montreal, QC, Canada; ⁸Sunnybrook Research Institute, Department of Medical Biophysics, University of Toronto, Toronto, ON, Canada.

* Co-first authorship, ** Senior authors

Correspondence

Sridar Narayanan, PhD

McConnell Brain Imaging Centre, Montreal Neurological Institute-Hospital

Department of Neurology and Neurosurgery, McGill University

3801 University Street, WB 321

Montreal, Quebec

Canada H3A 2B4

Email: sridar.narayanan@mcgill.ca

Telephone: 514-398-8258

AmanPreet Badhwar, MSc, PhD

Multiomics Investigation of Neurodegenerative Diseases (MIND) lab, Centre de Recherche de l'Institut Universitaire de Gériatrie de Montréal (CRIUGM)

4565 Chemin Queen Mary

Montréal, Quebec

Canada H3W 1W5

Email: amanpreet.badhwar@umontreal.ca

Telephone: 001 (514) 340-3540, extension 3345

ABSTRACT

Oxidative stress, an imbalance between production and neutralization of reactive oxygen species, can damage brain cells and contribute to cognitive decline in Alzheimer disease (AD) continuum. Levels of glutathione (GSH), the most prevalent endogenous brain antioxidant, can be assessed with magnetic resonance spectroscopy (MRS) and serves as a brain-oxidative stress index. Since the relationship between GSH and vascular-brain injury is unknown in the AD continuum, we address this gap in mild cognitive impairment (MCI) of the AD type. 3T MRI/MRS data were obtained from 31 MCI participants. GSH and total N-acetylaspartate (tNAA; neuroaxonal integrity marker) were measured in posterior cingulate cortex (PCC) and frontal white matter (FWM). Cerebrovascular injury was assessed using white matter hyperintensity (WMH) volume. Global and regional brain tissue integrity were assessed using normalized brain (NBV) and hippocampal volumes, respectively. Levels of tNAA, GSH/total creatine (tCr), and tNAA/tCr were higher in PCC than FWM. Significant associations were reported in FWM between GSH/tCr and tNAA/tCr, and between GSH and both WMH and NBV. Our results suggest that oxidative stress contributes to vascular-brain injury in MCI of the AD type.

I. INTRODUCTION

Age-related dementias impact over 44 million people worldwide, a number projected to triple by 2050 as the global population ages [1]. Alzheimer's disease (AD), the most prevalent of these dementias [2], is often preceded by a prodromal stage known as mild cognitive impairment (MCI) [3,4]. The underlying pathology of AD is a complex, multifactorial process that begins decades before dementia onset, typically during midlife [5–7]. Traditionally, AD progression has been characterized by the sequential accumulation of amyloid-beta plaques, tau tangles, and brain atrophy [5–7]. However, recent updates to the AD biomarker system acknowledge the multifaceted nature of the disease by incorporating additional factors such as inflammation and vascular brain injury, both of which play crucial roles early in AD progression [8–12]. Oxidative stress has emerged as a major driver and consequence of both inflammation and vascular injury in AD [13–17], prompting clinical trials of antioxidant therapies as potential disease-modifying treatments [18].

Oxidative stress arises when the delicate balance between reactive oxygen species (ROS) and antioxidants is disrupted, either due to increased ROS production or weakened antioxidant defences [19–21]. In AD, substantial evidence points to persistent oxidative stress within brain tissue throughout the disease course [13]. Amyloid-beta oligomers are believed to contribute significantly to this process, initiating oxidative stress in the early stages of the disease [22]. This imbalance between ROS and antioxidants damages nucleic acids, lipids, proteins, and other molecules, triggering inflammation, cell death, and tissue damage [21,23,24]. Glutathione (GSH), the brain's most abundant antioxidant, is crucial in defending against ROS-induced damage [25]. It acts by either directly neutralizing ROS or participating in enzymatic reactions [21]. GSH levels in humans can be monitored using magnetic resonance spectroscopy (MRS), a powerful non-invasive method for assessing cerebral metabolites, or through biochemical assays of brain tissue and biofluids (e.g., blood) [21].

Although research is still ongoing, most studies report perturbed GSH levels in brain and peripheral biofluids in the MCI and dementia stages of the AD continuum compared to healthy controls [26–33]. In particular, *in vivo* 3T MRS studies using edited sequences have revealed lower GSH levels in key brain regions in AD dementia individuals [26–29]. While reductions in GSH, specifically in the hippocampus and frontal cortex, have been linked to poorer cognition [27], this association has not yet been explored across all brain regions. Lower GSH levels have also been detected in the blood of AD dementia individuals [31]. This widespread decline in GSH further reinforces the link between oxidative stress and AD

pathology [27]. Supporting this, longitudinal data indicate that higher baseline plasma GSH levels in cognitively unimpaired older adults are associated with a lower risk of developing AD and better long-term preservation of executive function [34].

Despite some understanding of GSH levels and their connection to cognition in AD, the relationship between GSH and both neuronal and vascular brain injury in AD remains poorly defined. While lower GSH levels are associated with increased white matter hyperintensity (WMH) volume, a marker of vascular brain injury, in non-AD conditions [35], this association in AD has yet to be explored. This knowledge gap is critical given the role of oxidative stress in both vascular dysfunction and neurodegeneration. Our study aims to address this gap by focusing on individuals with MCI of the AD type, investigating how brain GSH levels relate to markers of (a) vascular brain injury, (b) neuroaxonal damage, and (c) overall brain integrity. Additionally, we examine the association between a cognitive screening test, the Montreal Cognitive Assessment (MoCA)[36], and vascular injury markers in MCI, aiming to clarify the interplay between oxidative stress, vascular pathology, and cognitive decline.

II. METHODS

2.1. Participants

Thirty-one MCI participants (20 females) were recruited from the Jewish General Hospital Memory Clinic for an open-label, single-arm pilot study testing the ability of a whey protein dietary supplement, a natural source of the glutathione precursor cysteine, to increase brain GSH in people with MCI (NCT03448055). The work reported here employs the baseline data from that study. The MCI diagnosis was based on clinical assessment, which comprised detailed neuropsychological testing (including MoCA), blood work, imaging (computed tomography and/or MRI) and family, personal, and medical history, according to formal criteria of McKhann et al. [37] and the ICD-10. The study was approved by the research ethics boards at the CIUSSS-Centre-Ouest de Montreal for the Jewish General Hospital and the McGill University Health Centre for the Montreal Neurological Institute-Hospital, and informed consent was obtained for all participants.

2.2. Brain MRI/MRS data acquisition

All subjects were scanned using a 3 tesla (T) Siemens Prismafit MR scanner (Siemens, Erlangen, Germany) at the McConnell Brain Imaging Centre of the Montreal Neurological Institute-Hospital using a body coil transmitter and a 64-channel head receive array coil. The MRI protocol included a whole brain, 3D T1-weighted (w) magnetization-prepared-2 rapid acquisition of gradient echos (MP2RAGE) sequence [38] (1 mm³ isotropic resolution) for structure segmentation and a 3D T2w fluid attenuated inversion recovery (FLAIR) sequence

(1 mm³ isotropic resolution) [39] for WMH segmentation. The MRS protocol included a single voxel SPin Echo full Intensity Acquired Localized (SPECIAL) sequence [40,41] in two brain regions relevant to MCI pathology of the AD-type, the posterior cingulate cortex (PCC [42–44]) and left frontal white matter (FWM [27]), with the following scan parameters: repetition time (TR)/echo time (TE) = 3000/8.5 ms, 128 averages (PCC; Figure 1A) and 256 averages (FWM; Figure 1B), 2048 acquired sample points, VAPOR (variable power and optimized relaxation delays) water suppression [45], 2000 Hz spectral width and delta frequency = -2.3 ppm. For each MRS voxel, 16 averages of water unsuppressed data were also acquired for eddy-current correction and water referencing. Six outer volume suppression (OVS) slabs were manually placed around the volume of interest (VOI) to suppress unwanted lipid signals. Shimming was performed automatically using the Siemens “brain” B0 shim mode [46]. The total MR acquisition time was about 60 min.

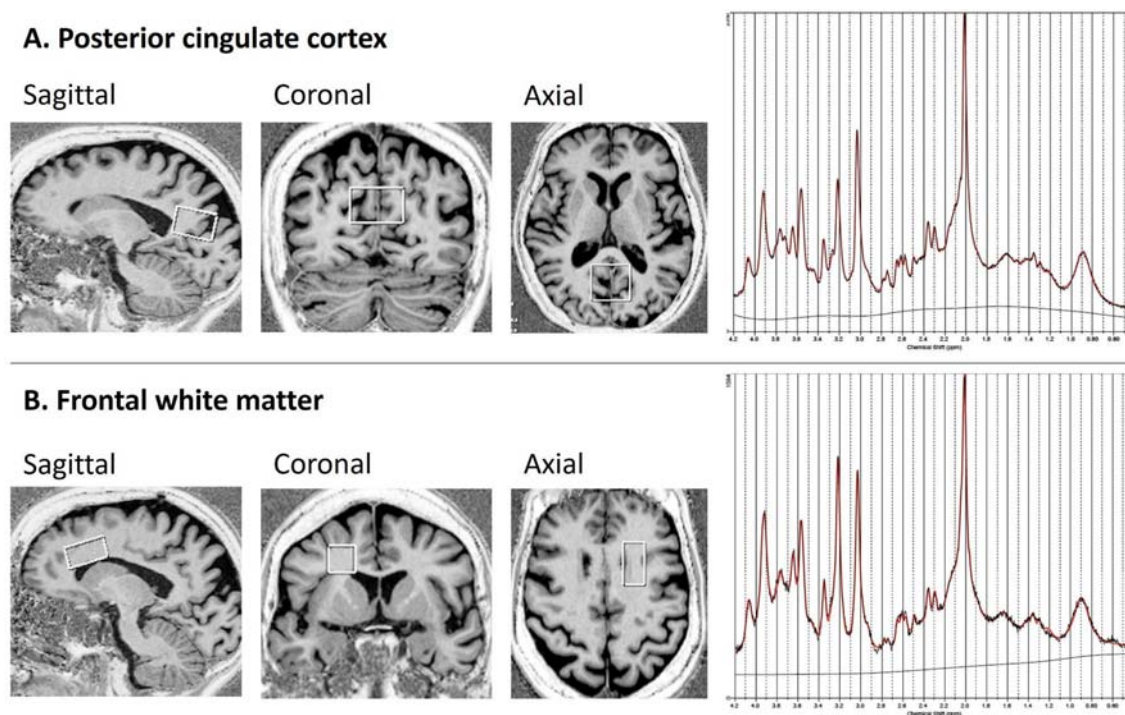


Figure 1. MRS voxels in A) posterior cingulate cortex (3 x 3 x 2 (RL x AP x FH) cm³); and **B)** frontal white matter (1.5 x 3 x 1.5 (RL x AP x FH) cm³). MRS spectra from the respective regions are displayed in the right panel.

2.3. Data preprocessing

The acquired MRS data were exported from the scanner console in TWIX (.dat) format. The data was preprocessed using the FID-A toolkit (github.com/CIC-methods/FID-A) [47]. The pipeline performed the following series of preprocessing steps: (1) weighted coil combination

[48]; (2) alignment of the resulting spectral averages, retrospective frequency and phase drift correction using spectral registration [49]; (3) Removal of motion-induced bad averages; and (4) signal averaging.

2.4. MRS quantification

Metabolite quantification was performed using the LCModel software (Stephen Provencher, Inc., Oakville, Canada) (S.W. Provencher et al. 2001). The water unsuppressed scan was used for internal referencing and eddy current correction. The basis set was generated in FID-A, consisting of the following 19 brain metabolites: Alanine (Ala), Aspartate (Asp), Phosphocholine (PCh), Creatine (Cr), Phosphocreatine (PCr), gamma-aminobutyric acid (GABA), glutamine (Gln), glutathione (GSH), glycine (Gly), myo-inositol (Ins), N-acetyl aspartate (NAA), scyllo-inositol (Scyllo), taurine (Tau), glucose (Glc), N-acetyl-aspartate-glutamate (NAAG), glycerophosphocholine (GPC), phosphatidylethanolamine (PE), serotonin (Ser) and ascorbic acid (Asc). Basis spectra for 9 macromolecules (MM) were simulated and incorporated in the basis set [49]. Specifically, the frequencies were: 0.89, 1.2, 1.39, 1.63, 1.98, 2.28, 2.98, 3.19, and 3.75 ppm. The LCModel default values for WCONC, ATTH₂O, and ATTMET were used, and additional correction for T1-relaxation or T2-relaxation of water and metabolites was not performed, given the relatively long TR and very short TE. Spectra were fit between the range [0.2 - 4.2 ppm]. The metabolites of interest for this study were the oxidative stress marker GSH and the neuroaxonal integrity marker tNAA (NAA+NAAG). Further details of the MRS acquisition and analysis are also included in the MRS reporting checklist (Supplementary Table S1) [50].

2.5. Vascular brain injury measurements

WMHs were segmented in both supratentorial and infratentorial brain regions by a locally developed automated, multispectral Bayesian technique using coregistered FLAIR and MP2RAGE T1w images. The automated WMH masks were reviewed and manually corrected by an experienced medical image analyst, using the DISPLAY software package (<https://www.bic.mni.mcgill.ca/software/Display/Display.html>) [51]. WMH volume was then calculated from the corrected masks. In addition, a qualitative assessment of WMH severity was performed by an experienced neuroradiologist using the Fazekas scale, with a score of 0 reflecting the absence of WMH, a score of 2 reflecting a significant WMH burden characterized by confluent white matter lesions, and 1 denoting an intermediate burden [52].

2.6. Brain volume measurement

Brain volume was segmented on the T1w MP2RAGE images and estimated using the locally-developed Brain Tissue Composition-Net (BTCNet) pipeline, based on a published

framework [53]. This pipeline involves generating tissue segmentation masks using a custom 3D CNN, inspired by the U-Net architecture. The model was trained on an internal dataset of co-registered T1w MRI scans with 1 x 1 x 1 mm³ isotropic sampling, comprising 130 participant sessions. The ground truth for healthy tissue segmentation was established using an automated multi-label atlas fusion method [54]. The native output was multiplied by a scaling factor to yield the head-size normalized brain volume [55]. Quality control was performed by visual inspection.

2.7. Hippocampal volume measurement

The total hippocampal volumes were segmented on T1w MP2RAGE images using an in-house hippocampal segmentation pipeline that consisted of three main parts described in previous studies: (1) generation of a patient template image [56], (2) patch-based segmentation [57], and (3) referencing of the hippocampal template based on a harmonized protocol [58]. The native hippocampal volumes were scaled to obtain the head-size normalized hippocampal volumes, using a scale factor derived from a skull-based registration of each individual's T1w MRI to the MNI-ICBM152-2009c (<https://nist.mni.mcgill.ca/atlas/>) standard space template [55,56]. To ensure accuracy of measurements and to identify any potential issues in the segmentation or scaling process, a visual quality inspection was performed by a neuroradiologist.

2.8. Statistical analysis

All statistical analyses were performed using Python (version 3.9.13). Relationships between GSH levels and markers of vascular brain injury, namely, WMH volume, Fazekas score; the neuroaxonal integrity marker tNAA; markers of normalized brain and hippocampal volume; and cognition assessed using the MoCA, were assessed using Pearson's correlation. A paired two-tailed *t*-test was performed between ROIs for a given metabolite, corrected for multiple comparisons (FDR = 5%). The significance threshold for all statistical tests was set at $p < 0.05$.

III. RESULTS

3.1. Demographics

A total of thirty-one MCI participants (age range: 55-86 years of age) were enrolled in the study, including 20 women (Table 1). Sixteen participants had vascular risk factors and/or comorbidities, including hypertension (N = 12), dyslipidemia (N = 8), and coronary artery disease (N = 3). The mean MoCA score was 24.68 (range: 20-29). The mean Fazekas score

was 0.74 (range: 0-2). Age was correlated (a) positively with Fazekas scores and WMH volume, and (b) negatively with GSH levels in the PCC and hippocampal volume.

		Mean (N=31)	Standard deviation
Age (years)		74.419	7.219
MoCA scores		24.677	2.676
GSH (IU)	PCC	1.611	0.163
	FWM	1.595	0.222
	ρ	0.689	
tNAA (IU)	PCC	14.542	1.202
	FWM	10.570	1.008
	ρ	< 0.001	
GSH/tCr	PCC	0.156	0.019
	FWM	0.197	0.030
	ρ	< 0.001	
tNAA/tCr	PCC	1.405	0.079
	FWM	1.302	0.094
	ρ	< 0.001	
Fazekas scores		0.742	0.773
WMH volume (mm ³)		4,803	6,720
Normalized brain volume (mm ³)		1,432,036	95,796
Hippocampal volume (mm ³)		7,345	1,280

Table 1.

Abbreviations: GSH, glutathione; MoCA, Montreal cognitive assessment; tCr, total creatine; tNAA, total N-acetyl aspartate, IU, institutional units.

3.2. Association between oxidative stress marker and brain vascular injury marker

We found GSH levels to be negatively correlated with WMH volume. While the correlation was significant in the FWM ($r = -0.360$; $p = 0.047$, Figure 2A, Table 2), a trend toward significance was observed in the PCC ($r = -0.353$; $p = 0.052$; Figure 2B, Table 2).

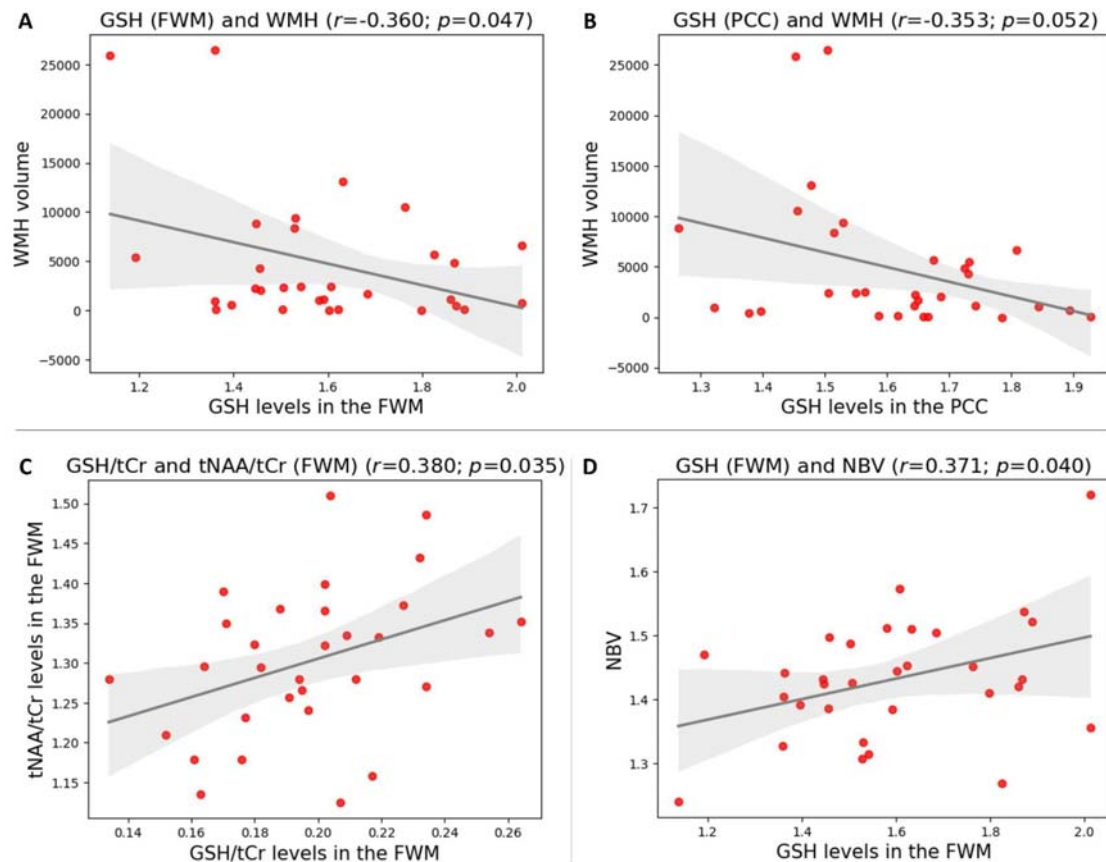


Figure 2. Scatter plots showing associations between **A)** GSH levels in the FWM and WMH volume (significant association), **B)** GSH levels in the PCC and WMH volume (trend toward significant association), **C)** GSH/tCr and tNAA/tCr levels in the FWM (significant association), and **D)** GSH levels in the FWM and NBV (significant association). The black line represents a linear smooth of the data, and the grey area reflects 95% confidence interval. Pearson's r and p -values provided. *Abbreviations:* FWM, frontal white matter; GSH, glutathione; NBV, normalized brain volume; tCr, total creatine; PCC, posterior cingulate cortex; tNAA, total N-acetyl aspartate; WMH, white matter hyperintensity.

	Region	WMH	tNAA	NBV	nHCPv	Age
GSH	PCC	$r = -0.353$ $p = 0.052$	$r = 0.157$ $p = 0.399$	$r = 0.212$ $p = 0.253$	$r = 0.330$ $p = 0.070$	$r = -0.469$ $p = 0.008$
	FWM	$r = -0.360$ $p = 0.047$	$r = 0.259$ $p = 0.160$	$r = 0.371$ $p = 0.040$	$r = 0.086$ $p = 0.646$	$r = -0.180$ $p = 0.332$

Table 2. Pearson correlations between GSH levels and other variables of interest.

Abbreviations: FWM, frontal white matter; GSH, glutathione; NBV, normalized brain volume; nHCPv, normalized hippocampal volume; tCr, total creatine; PCC, posterior cingulate cortex; tNAA, total N-acetyl aspartate; WMH, white matter hyperintensity.

3.3. Association between metabolite markers of oxidative stress and neuroaxonal integrity

We found a positive significant association between GSH/tCr and tNAA/tCr levels in the FWM ($r = 0.380$; $p = 0.035$; Figure 2C, Table 3).

	Region	WMH	tNAA/tCr	NBV	nHCPv	Age
GSH/tCr	PCC	$r = -0.199$ $p = 0.283$	$r = 0.035$ $p = 0.850$	$r = -0.017$ $p = 0.927$	$r = 0.105$ $p = 0.573$	$r = -0.305$ $p = 0.095$
	FWM	$r = -0.140$ $p = 0.453$	$r = 0.380$ $p = 0.035$	$r = 0.330$ $p = 0.070$	$r = 0.002$ $p = 0.993$	$r = -0.091$ $p = 0.625$

Table 3. Pearson correlations between GSH/tCr levels and other variables of interest.

Abbreviations: FWM, frontal white matter; GSH, glutathione; NBV, normalized brain volume; nHCPv, normalized hippocampal volume; tCr, total creatine; PCC, posterior cingulate cortex; tNAA, total N-acetyl aspartate; WMH, white matter hyperintensity.

3.4. Association between oxidative stress markers and brain tissue integrity

We found GSH levels in the FWM to be significantly associated with normalized brain volume ($r = 0.371$; $p = 0.040$; Figure 2D, Table 2), but not hippocampal volume. No association was found with GSH levels in the PCC, with normalized brain volume or hippocampal volume (Table 2).

3.5. Metabolite Levels in the FWM and PCC

In the FWM compared to the PCC, we found (a) GSH/tCr level to be significantly higher, while (b) tNAA/tCr and tNAA levels to be significantly lower ($p < 0.001$) (Figure 3, Table 1). No significant differences were found for GSH levels between the FWM and the PCC (Table 1).

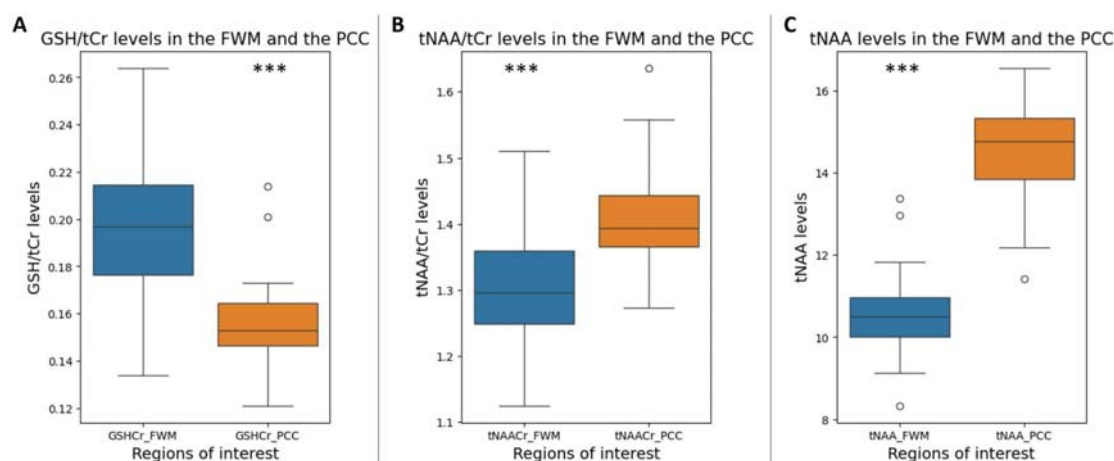


Figure 3. Boxplot of **A**) GSH/tCr levels in the FWM (left) and the PCC (right), **B**) tNAA/tCr levels in the FWM (left) and the PCC (right), and **C**) tNAA levels in the FWM (left) and the PCC (right). *** denotes $p < 0.001$. *Abbreviations:* FWM, frontal white matter; GSH, glutathione; tCr, total creatine; PCC, posterior cingulate cortex; tNAA, total N-acetyl aspartate; WMH, white matter hyperintensity.

3.6. Association between cognition and other markers

MoCA scores were not significantly associated with any markers.

IV. DISCUSSION

Studies have shown that MRS is sensitive to metabolic alterations in the AD continuum. In this study, we explored the relationship between MRS-detected brain GSH levels, a marker of oxidative stress, and both vascular and neuronal injury markers, as well as overall brain integrity and cognition in MCI individuals. By probing these associations, we offer new insights into how oxidative stress may contribute to neurovascular injury, highlighting GSH's potential role in linking vascular and neuronal pathologies in early-stage AD.

4.1. Oxidative Stress as a Driver of Vascular Injury in AD

Our study revealed a significant inverse relationship between MRS-detected brain GSH levels and WMH volume in MCI patients. This suggests that increased oxidative stress during the early stages of AD may drive vascular injury, shedding light on an important but under-researched link between GSH, oxidative stress, and vascular pathology in AD. This finding aligns with observations in non-AD conditions, such as COVID-19 survivors [35], where decreased GSH levels were associated with higher WMH volume, suggesting that reduced GSH levels contribute to white matter damage and increased WMH burden [35].

Further supporting our results, studies have linked lower plasma levels of nitric oxide and α -tocopherol (vitamin E) to more severe WMH burdens in middle-aged to older adults [59,60]. Both these antioxidants are known to interact with GSH [20,61,62].

Our observed relationship between brain GSH and WMH volume is particularly relevant when considering the pathogenic mechanisms that contribute to WMHs, such as brain endothelial dysfunction and blood-brain barrier leakage [63–65]. Both pathological processes have been documented in MCI individuals [66–71] and mouse models of AD [72–75], with oxidative stress identified as a key contributor [66,70]. GSH not only protects brain endothelial cells from oxidative stress but also supports their repair and proliferation following injury [76,77]. In the context of blood-brain barrier damage, GSH delays the transition of endothelial cells from DNA replication to cell division, allowing additional time for DNA repair [78]. Additionally, GSH helps maintain blood-brain barrier integrity by preserving tight junction proteins like claudin 5 [77].

4.2. GSH and neuronal-brain injury markers

Our findings revealed significant positive correlations in the FWM between (a) GSH/tCr and tNAA/tCr ratios – with NAA considered a key neuroaxonal marker [79,80], and (b) GSH levels and normalized brain volume, a marker of brain tissue integrity. These results highlight increased oxidative stress as an important contributor to increased neuronal injury and subsequent brain atrophy – a key feature of MCI and AD dementia [5]. Although human studies on the relationship between GSH and neuronal health in the AD continuum are scarce, our findings align with (a) increased death in neurons cultured from AD transgenic mice following GSH depletion [81], and (b) neuronal injury/loss in mice lacking a GSH synthesis enzyme [82,83].

In contrast to GSH, NAA levels have been better investigated in AD. Lower NAA levels (or its ratio) have been observed in MCI [84] and AD individuals across several brain regions, including the posterior cingulate gyrus, hippocampus and frontoparietal cortex [31,85–87]. Additionally, (a) reduced NAA levels have been associated with an increased risk of conversion from MCI to AD dementia [84,86,88], and (b) lower NAA/tCr early in the AD continuum associated with amyloid-beta and tau – two hallmark AD pathologies [89].

4.3. GSH and Cognition

We found no significant association between GSH levels in PCC or FWM and cognition, as assessed using MoCA. Notably, no studies have specifically examined the relationship between GSH levels and cognition using MoCA within the AD continuum, though other

cognitive tests have explored this connection. Studies comparing GSH levels in the AD continuum to cognitively unimpaired individuals have reported the following associations: Lower hippocampal GSH levels in MCI, detected via 3T MRS, were significantly associated with worse global cognition on the Mini Mental State Examination (MMSE) [27]. Similarly, lower GSH levels in the postmortem frontal cortex in MCI correlated with poorer pre-mortem MMSE scores [30]. Additionally, lower 3T MRS-detected GSH levels in both the hippocampus and frontal cortex in AD were linked to declines in both global cognition (MMSE, Clinical Dementia Rating) and executive functions (Trail Making Test A and B) [27]. Studies along the AD continuum have also assessed GSH in blood, revealing lower levels than in cognitively unimpaired individuals. In whole blood and plasma, lower GSH levels in MCI and AD were associated with worse cognition as assessed by the MMSE [90,91].

Commensurate with the identification of aging as the most significant risk factor for AD, a longitudinal study in older healthy adults (65+ years) found that higher baseline plasma GSH levels were associated with lower AD risk and better cognitive performance, in particular executive function [34]. In contrast, two cross-sectional studies in the same age group reported no association between MRS-detected brain GSH levels (in the medial frontal, sensorimotor, and occipital regions) and cognition as measured by MoCA [21].

4.4. Antioxidant therapies as potential disease-modifying treatments in AD

Given the role of oxidative stress and GSH in AD pathogenesis and progression, including cognitive decline, several clinical trials are testing GSH and associated compounds as disease-modifying treatments [18,21]. Clinical trials have shown that it is possible to increase GSH levels in the brain following dietary supplement intake [21]. Specifically, supplementation with N-acetyl cysteine (NAC) has been shown to (a) increase GSH levels by providing cysteine, the rate limiting compound in GSH synthesis [92,93], (b) protect cells from amyloid-beta-induced apoptosis [93], and (c) improve cognition in the senescence-accelerated mouse-prone 8 (SAMP8) model overexpressing the amyloid precursor protein [93] and in human psychosis [94]. Antioxidant therapy with catalase in mice overexpressing the amyloid precursor protein has been shown to completely reverse cerebrovascular dysfunction [72,95], with catalase being one of the two systems, together with the GSH system, for detoxifying hydrogen peroxide, a major reactive oxygen species [96,97]. In healthy middle-aged and older humans, antioxidant-promoting dietary intake, such as dairy food or green tea, has been shown to (a) increase brain GSH levels, and (b) increase superoxide dismutase and glutathione peroxidase and decrease malondialdehyde levels in serum, respectively [21,98], resulting in improved cognition as assessed by MoCA, Hopkins Verbal Learning Test (HVLT), TMT-B, and Victoria Stroop test interference scores [98].

Together with improved cognition and altered oxidative stress markers, green tea consumption was also shown to alter AD markers such as serum pTau₁₈₁, amyloid-beta₄₂, and total amyloid-beta levels [98], showcasing the potential relevance of improving antioxidant capacity in the management of AD.

V. CONCLUSION

Our study sheds light on the relationship between oxidative stress, vascular and brain injury markers, and cognitive function in individuals with MCI. Moving forward, longitudinal studies with comprehensive cognitive assessments and larger cohorts are warranted to validate our findings and further elucidate the causal relationships between oxidative stress, brain injury markers, and cognitive decline in MCI.

ACKNOWLEDGMENTS

We would like to thank Dr. Ali Filali-Mouhim from the Centre de Recherche de l'Institut Universitaire de Gériatrie de Montréal (CRIUGM) for his input for the statistical analysis.

CONFLICT OF INTEREST STATEMENT

F.E.D., S.S., W.L.K.M., C.H., R.A., D.A., D.F., H.E.A., S.A., J.N., A.B. declare having no financial or personal conflicts of interest. H.M.S. served as an officer of HemOx Biotechnologies and as a consultant to Osta Biotechnologies, Immunotec Inc., Molecular Biometrics Inc., TEVA Neurosciences, and Caprion Pharmaceuticals, and has received research funding from Immunotec Inc. S.N. has received research funding from Roche-Genentech and Immunotec, consulting fees from Sana Biotechnology, and is a part-time employee of NeuroRx Research. D.L.A. has received personal fees for consulting from Biogen, Eli Lilly, EMD Serono, Frequency Therapeutics, Gossamer Bio, Merck, Novartis, Race to Erase MS, Roche, and Sanofi-Aventis, and has an ownership interest in NeuroRx Research.

CONSENT STATEMENT

The study was approved by the research ethics boards at the CIUSSS-Centre-Ouest de Montreal (Jewish General Hospital) and the McGill University Health Centre (Montreal Neurological Institute-Hospital), and informed consent was obtained for all participants.

FUNDING SOURCES

The overall study, including data acquisition, was supported by Immunotec Inc. (to H.M.S. PI, et al.). Baseline analyses reported here additionally were supported by the Canadian Institutes of Health Research grant #153005 (S.N. (grantee), S.S.); Fonds de Recherche

Québec – Santé (FRQS) Chercheurs boursiers Junior 1 (2020–2024) and the Fonds de soutien à la recherche pour les neurosciences du vieillissement from the Fondation Courtois (A.B.); Fonds de Recherche Québec – Santé (FRQS) bourse de formation à la maîtrise (2021) and FRQS bourse de formation au doctorat (2024) (F.E.D.).

KEYWORDS

Oxidative stress; Glutathione; Mild cognitive impairment; Magnetic resonance spectroscopy; Vascular-brain injury; White matter hyperintensities, Alzheimer’s disease.

VI. REFERENCES

- [1] Lane CA, Hardy J, Schott JM (2018) Alzheimer's disease. *Eur J Neurol* **25**, 59–70.
- [2] (2020) 2020 Alzheimer's disease facts and figures. *Alzheimers Dement*.
- [3] Petersen RC (2004) Mild cognitive impairment as a diagnostic entity. *J Intern Med* **256**, 183–194.
- [4] Petersen RC, Smith GE, Waring SC, Ivnik RJ, Tangalos EG, Kokmen E (1999) Mild cognitive impairment: clinical characterization and outcome. *Arch Neurol* **56**, 303–308.
- [5] Jack CR Jr, Knopman DS, Jagust WJ, Petersen RC, Weiner MW, Aisen PS, Shaw LM, Vemuri P, Wiste HJ, Weigand SD, Lesnick TG, Pankratz VS, Donohue MC, Trojanowski JQ (2013) Tracking pathophysiological processes in Alzheimer's disease: an updated hypothetical model of dynamic biomarkers. *Lancet Neurol* **12**, 207–216.
- [6] Ritchie K, Ritchie CW, Yaffe K, Skoog I, Scarmeas N (2015) Is late-onset Alzheimer's disease really a disease of midlife? *Alzheimers Dement* **1**, 122–130.
- [7] Sperling RA, Aisen PS, Beckett LA, Bennett DA, Craft S, Fagan AM, Iwatsubo T, Jack CR Jr, Kaye J, Montine TJ, Park DC, Reiman EM, Rowe CC, Siemers E, Stern Y, Yaffe K, Carrillo MC, Thies B, Morrison-Bogorad M, Wagster MV, Phelps CH (2011) Toward defining the preclinical stages of Alzheimer's disease: recommendations from the National Institute on Aging-Alzheimer's Association workgroups on diagnostic guidelines for Alzheimer's disease. *Alzheimers Dement* **7**, 280–292.
- [8] Jack CR Jr, Andrews JS, Beach TG, Buracchio T, Dunn B, Graf A, Hansson O, Ho C, Jagust W, McDade E, Molinuevo JL, Okonkwo OC, Pani L, Rafii MS, Scheltens P, Siemers E, Snyder HM, Sperling R, Teunissen CE, Carrillo MC (2024) Revised criteria for diagnosis and staging of Alzheimer's disease: Alzheimer's Association Workgroup. *Alzheimers Dement* **20**, 5143–5169.
- [9] Sweeney MD, Montagne A, Sagare AP, Nation DA, Schneider LS, Chui HC, Harrington MG, Pa J, Law M, Wang DJJ, Jacobs RE, Doubal FN, Ramirez J, Black SE, Nedergaard M, Benveniste H, Dichgans M, Iadecola C, Love S, Bath PM, Markus HS, Al-Shahi Salman R, Allan SM, Quinn TJ, Kalaria RN, Werring DJ, Carare RO, Touyz RM, Williams SCR, Moskowitz MA, Katusic ZS, Lutz SE, Lazarov O, Minshall RD, Rehman J, Davis TP, Wellington CL, González HM, Yuan C, Lockhart SN, Hughes TM, Chen CLH, Sachdev P, O'Brien JT, Skoog I, Pantoni L, Gustafson DR, Biessels GJ, Wallin A, Smith EE, Mok V, Wong A, Passmore P, Barkof F, Muller M, Breteler MMB, Román GC, Hamel E, Seshadri S, Gottesman RF, van Buchem MA, Arvanitakis Z, Schneider JA, Drewes LR, Hachinski V, Finch CE, Toga AW, Wardlaw JM, Zlokovic BV (2019) Vascular dysfunction-The disregarded partner of Alzheimer's disease. *Alzheimers Dement* **15**, 158–167.
- [10] Iturria-Medina Y, Sotero RC, Toussaint PJ, Mateos-Pérez JM, Evans AC, Alzheimer's Disease Neuroimaging Initiative (2016) Early role of vascular dysregulation on late-onset Alzheimer's disease based on multifactorial data-driven analysis. *Nat Commun* **7**, 11934.
- [11] De Strooper B, Karran E (2016) The Cellular Phase of Alzheimer's Disease. *Cell* **164**, 603–615.
- [12] Akiyama H, Barger S, Barnum S, Bradt B, Bauer J, Cole GM, Cooper NR, Eikelenboom P, Emmerling M, Fiebich BL, Finch CE, Frautschy S, Griffin WS, Hampel H, Hull M, Landreth G, Lue L, Mrak R, Mackenzie IR, McGeer PL, O'Banion MK, Pachter J, Pasinetti G, Plata-Salaman C, Rogers J, Rydel R, Shen Y, Streit W, Strommeyer R, Tooyoma I, Van Muiswinkel FL, Veerhuis R, Walker D, Webster S, Wegrzyniak B, Wenk G, Wyss-Coray T (2000) Inflammation and Alzheimer's disease. *Neurobiol Aging* **21**, 383–421.
- [13] Gella A, Durany N (2009) Oxidative stress in Alzheimer disease. *Cell Adh Migr* **3**, 88–93.
- [14] Butterfield DA (2023) Oxidative Stress in Brain in Amnesic Mild Cognitive Impairment. *Antioxidants (Basel)* **12**,.

- [15] Smith MA, Zhu X, Tabaton M, Liu G, McKeel DW Jr, Cohen ML, Wang X, Siedlak SL, Dwyer BE, Hayashi T, Nakamura M, Nunomura A, Perry G (2010) Increased iron and free radical generation in preclinical Alzheimer disease and mild cognitive impairment. *J Alzheimers Dis* **19**, 363–372.
- [16] Triplett JC, Swomley AM, Cai J, Klein JB, Butterfield DA (2016) Quantitative phosphoproteomic analyses of the inferior parietal lobule from three different pathological stages of Alzheimer's disease. *J Alzheimers Dis* **49**, 45–62.
- [17] Aliev G, Smith MA, Seyidov D, Neal ML, Lamb BT, Nunomura A, Gasimov EK, Vinters HV, Perry G, LaManna JC, Friedland RP (2002) The role of oxidative stress in the pathophysiology of cerebrovascular lesions in Alzheimer's disease. *Brain Pathol* **12**, 21–35.
- [18] Cummings J, Zhou Y, Lee G, Zhong K, Fonseca J, Cheng F (2023) Alzheimer's disease drug development pipeline: 2023. *Alzheimers Dement* **9**, e12385.
- [19] Schieber M, Chandel NS (2014) ROS function in redox signaling and oxidative stress. *Curr Biol* **24**, R453–62.
- [20] Ballatori N, Krance SM, Notenboom S, Shi S, Tieu K, Hammond CL (2009) Glutathione dysregulation and the etiology and progression of human diseases. *Biol Chem* **390**, 191–214.
- [21] Detcheverry F, Senthil S, Narayanan S, Badhwar A (2023) Changes in levels of the antioxidant glutathione in brain and blood across the age span of healthy adults: A systematic review. *NeuroImage: Clinical* 103503.
- [22] Butterfield DA, Boyd-Kimball D (2019) Redox proteomics and amyloid β -peptide: insights into Alzheimer disease. *J Neurochem* **151**, 459–487.
- [23] Pareek V, Nath B, Roy PK (2019) Role of Neuroimaging Modality in the Assessment of Oxidative Stress in Brain: A Comprehensive Review. *CNS Neurol Disord Drug Targets* **18**, 372–381.
- [24] Sinha K, Das J, Pal PB, Sil PC (2013) Oxidative stress: the mitochondria-dependent and mitochondria-independent pathways of apoptosis. *Arch Toxicol* **87**, 1157–1180.
- [25] Rae CD, Williams SR (2017) Glutathione in the human brain: Review of its roles and measurement by magnetic resonance spectroscopy. *Anal Biochem* **529**, 127–143.
- [26] Shukla D, Mandal PK, Tripathi M, Vishwakarma G, Mishra R, Sandal K (2020) Quantitation of in vivo brain glutathione conformers in cingulate cortex among age-matched control, MCI, and AD patients using MEGA-PRESS. *Hum Brain Mapp* **41**, 194–217.
- [27] Mandal PK, Saharan S, Tripathi M, Murari G (2015) Brain glutathione levels--a novel biomarker for mild cognitive impairment and Alzheimer's disease. *Biol Psychiatry* **78**, 702–710.
- [28] Mandal PK, Tripathi M, Sugunan S (2012) Brain oxidative stress: detection and mapping of anti-oxidant marker "Glutathione" in different brain regions of healthy male/female, MCI and Alzheimer patients using non-invasive magnetic resonance spectroscopy. *Biochem Biophys Res Commun* **417**, 43–48.
- [29] Shukla D, Mandal PK, Mishra R, Punjabi K, Dwivedi D, Tripathi M, Badhautia V (2021) Hippocampal Glutathione Depletion and pH Increment in Alzheimer's Disease: An in vivo MRS Study. *J Alzheimers Dis* **84**, 1139–1152.
- [30] Ansari MA, Scheff SW (2010) Oxidative stress in the progression of Alzheimer disease in the frontal cortex. *J Neuropathol Exp Neurol* **69**, 155–167.
- [31] Chen JJ, Thiyagarajah M, Song J, Chen C, Herrmann N, Gallagher D, Rapoport MJ, Black SE, Ramirez J, Andreatza AC, Oh P, Marzolini S, Graham SJ, Lanctôt KL (2022) Altered central and blood glutathione in Alzheimer's disease and mild cognitive impairment: a meta-analysis. *Alzheimers Res Ther* **14**, 23.
- [32] Zalewska A, Klimiuk A, Zięba S, Wnorowska O, Rusak M, Waszkiewicz N, Szarmach I, Dzierżanowski K, Maciejczyk M (2021) Salivary gland dysfunction and salivary redox imbalance in patients with Alzheimer's disease. *Sci Rep* **11**, 23904.
- [33] Han H, Wang F, Chen J, Li X, Fu G, Zhou J, Zhou D, Wu W, Chen H (2021) Changes in Biothiol Levels Are Closely Associated with Alzheimer's Disease. *J Alzheimers Dis* **82**,

- 527–540.
- [34] Charisis S, Ntanasi E, Yannakoulia M, Anastasiou CA, Kosmidis MH, Dardiotis E, Hadjigeorgiou G, Sakka P, Veskoukis AS, Kouretas D, Scarmeas N (2021) Plasma GSH levels and Alzheimer's disease. A prospective approach.: Results from the HELIAD study. *Free Radic Biol Med* **162**, 274–282.
- [35] Poletti S, Paolini M, Mazza MG, Palladini M, Furlan R, Querini PR, Covid BioB Outpatients Clinic Study Group, Benedetti F (2022) Lower levels of glutathione in the anterior cingulate cortex associate with depressive symptoms and white matter hyperintensities in COVID-19 survivors. *Eur Neuropsychopharmacol* **61**, 71–77.
- [36] Nasreddine ZS, Phillips NA, Bédirian V, Charbonneau S, Whitehead V, Collin I, Cummings JL, Chertkow H (2005) The Montreal Cognitive Assessment, MoCA: a brief screening tool for mild cognitive impairment. *J Am Geriatr Soc* **53**, 695–699.
- [37] McKhann G, Drachman D, Folstein M, Katzman R, Price D, Stadlan EM (1984) Clinical diagnosis of Alzheimer's disease: report of the NINCDS-ADRDA Work Group under the auspices of Department of Health and Human Services Task Force on Alzheimer's Disease. *Neurology* **34**, 939–944.
- [38] Marques JP, Kober T, Krueger G, van der Zwaag W, Van de Moortele P-F, Gruetter R (2010) MP2RAGE, a self bias-field corrected sequence for improved segmentation and T1-mapping at high field. *Neuroimage* **49**, 1271–1281.
- [39] Zhong Y, Utriainen D, Wang Y, Kang Y, Haacke EM (2014) Automated White Matter Hyperintensity Detection in Multiple Sclerosis Using 3D T2 FLAIR. *Int J Biomed Imaging* **2014**, 239123.
- [40] Mekte R, Mlynárik V, Gambarota G, Hergt M, Krueger G, Gruetter R (2009) MR spectroscopy of the human brain with enhanced signal intensity at ultrashort echo times on a clinical platform at 3T and 7T. *Magn Reson Med* **61**, 1279–1285.
- [41] Mlynárik V, Gambarota G, Frenkel H, Gruetter R (2006) Localized short-echo-time proton MR spectroscopy with full signal-intensity acquisition. *Magn Reson Med* **56**, 965–970.
- [42] Rahim F, Khalafi M, Davoodi M, Shirbandi K (2023) Metabolite changes in the posterior cingulate cortex could be a signature for early detection of Alzheimer's disease: a systematic review and meta-analysis study based on 1H-NMR. *Egypt J Neurol Psychiatr Neurosurg* **59**,.
- [43] Badhwar A, Tam A, Dansereau C, Orban P, Hoffstaedter F, Bellec P (2017) Resting-state network dysfunction in Alzheimer's disease: A systematic review and meta-analysis. *Alzheimers Dement* **8**, 73–85.
- [44] Lee P-L, Chou K-H, Chung C-P, Lai T-H, Zhou JH, Wang P-N, Lin C-P (2020) Posterior cingulate cortex network predicts Alzheimer's disease progression. *Front Aging Neurosci* **12**, 608667.
- [45] Tkáč I, Deelchand D, Dreher W, Hetherington H, Kreis R, Kumaragamage C, Považan M, Spielman DM, Strasser B, de Graaf RA (2021) Water and lipid suppression techniques for advanced 1 H MRS and MRSI of the human brain: Experts' consensus recommendations. *NMR Biomed* **34**, e4459.
- [46] Gruetter R (1993) Automatic, localized in vivo adjustment of all first- and second-order shim coils. *Magn Reson Med* **29**, 804–811.
- [47] *FID-A: Toolbox for simulation and processing of in-vivo magnetic resonance spectroscopy (MRS) data*, Github.
- [48] Hall EL, Stephenson MC, Price D, Morris PG (2014) Methodology for improved detection of low concentration metabolites in MRS: optimised combination of signals from multi-element coil arrays. *Neuroimage* **86**, 35–42.
- [49] Near J, Edden R, Evans CJ, Paquin R, Harris A, Jezzard P (2015) Frequency and phase drift correction of magnetic resonance spectroscopy data by spectral registration in the time domain. *Magn Reson Med* **73**, 44–50.
- [50] Lin A, Andronesi O, Bogner W, Choi I-Y, Coello E, Cudalbu C, Juchem C, Kemp GJ, Kreis R, Krššák M, Lee P, Maudsley AA, Meyerspeer M, Mlynarik V, Near J, Öz G, Peek AL, Puts NA, Ratai E-M, Tkáč I, Mullins PG, Experts' Working Group on Reporting

- Standards for MR Spectroscopy (2021) Minimum Reporting Standards for in vivo Magnetic Resonance Spectroscopy (MRSinMRS): Experts' consensus recommendations. *NMR Biomed* **34**, e4484.
- [51] MNI display - software for visualization and segmentation of surfaces and volumes, Last updated June 29, 2016, Accessed on June 29, 2016.
- [52] Cedres N, Ferreira D, Machado A, Shams S, Sacuiu S, Waern M, Wahlund L-O, Zettergren A, Kern S, Skoog I, Westman E (2020) Predicting Fazekas scores from automatic segmentations of white matter signal abnormalities. *Aging* **12**, 894–901.
- [53] Sabuncu MR, Yeo BTT, Van Leemput K, Fischl B, Golland P (2010) A generative model for image segmentation based on label fusion. *IEEE Trans Med Imaging* **29**, 1714–1729.
- [54] Coupé P, Manjón JV, Fonov V, Pruessner J, Robles M, Collins DL (2011) Patch-based segmentation using expert priors: application to hippocampus and ventricle segmentation. *Neuroimage* **54**, 940–954.
- [55] De Nigris D, Collins DL, Arbel T (2012) Multi-modal image registration based on gradient orientations of minimal uncertainty. *IEEE Trans Med Imaging* **31**, 2343–2354.
- [56] Fonov V, Evans AC, Botteron K, Almli CR, McKinstry RC, Collins DL, Brain Development Cooperative Group (2011) Unbiased average age-appropriate atlases for pediatric studies. *Neuroimage* **54**, 313–327.
- [57] Coupé P, Eskildsen SF, Manjón JV, Fonov VS, Collins DL, Alzheimer's disease Neuroimaging Initiative (2012) Simultaneous segmentation and grading of anatomical structures for patient's classification: application to Alzheimer's disease. *Neuroimage* **59**, 3736–3747.
- [58] Boccardi M, Bocchetta M, Morency FC, Collins DL, Nishikawa M, Ganzola R, Grothe MJ, Wolf D, Redolfi A, Pievani M, Antelmi L, Fellgiebel A, Matsuda H, Teipel S, Duchesne S, Jack CR Jr, Frisoni GB, EADC-ADNI Working Group on The Harmonized Protocol for Manual Hippocampal Segmentation and for the Alzheimer's Disease Neuroimaging Initiative (2015) Training labels for hippocampal segmentation based on the EADC-ADNI harmonized hippocampal protocol. *Alzheimers Dement* **11**, 175–183.
- [59] Shibata H, Nabika T, Moriyama H, Masuda J, Kobayashi S (2004) Correlation of NO metabolites and 8-iso-prostaglandin F2a with periventricular hyperintensity severity. *Arterioscler Thromb Vasc Biol* **24**, 1659–1663.
- [60] Schmidt R, Hayn M, Fazekas F, Kapeller P, Esterbauer H (1996) Magnetic resonance imaging white matter hyperintensities in clinically normal elderly individuals: correlations with plasma concentrations of naturally occurring antioxidants. *Stroke* **27**, 2043–2047.
- [61] Hummel SG, Fischer AJ, Martin SM, Schafer FQ, Buettner GR (2006) Nitric oxide as a cellular antioxidant: a little goes a long way. *Free Radic Biol Med* **40**, 501–506.
- [62] Barbagallo M, Dominguez LJ, Tagliamonte MR, Resnick LM, Paolisso G (1999) Effects of vitamin E and glutathione on glucose metabolism: role of magnesium. *Hypertension* **34**, 1002–1006.
- [63] Forsberg KME, Zhang Y, Reiners J, Ander M, Niedermayer A, Fang L, Neugebauer H, Kassubek J, Katona I, Weis J, Ludolph AC, Del Tredici K, Braak H, Yilmazer-Hanke D (2018) Endothelial damage, vascular bagging and remodeling of the microvascular bed in human microangiopathy with deep white matter lesions. *Acta Neuropathol Commun* **6**, 128.
- [64] Gouw AA, Seewann A, van der Flier WM, Barkhof F, Rozemuller AM, Scheltens P, Geurts JJG (2011) Heterogeneity of small vessel disease: a systematic review of MRI and histopathology correlations. *J Neurol Neurosurg Psychiatry* **82**, 126–135.
- [65] Hassan A, Hunt BJ, O'Sullivan M, Parmar K, Bamford JM, Briley D, Brown MM, Thomas DJ, Markus HS (2003) Markers of endothelial dysfunction in lacunar infarction and ischaemic leukoaraiosis. *Brain* **126**, 424–432.
- [66] Carvalho C, Moreira PI (2018) Oxidative Stress: A Major Player in Cerebrovascular Alterations Associated to Neurodegenerative Events. *Front Physiol* **9**, 806.
- [67] Sweeney MD, Sagare AP, Zlokovic BV (2018) Blood-brain barrier breakdown in Alzheimer disease and other neurodegenerative disorders. *Nat Rev Neurol* **14**, 133–

- 150.
- [68] Tachibana K, Hirayama R, Sato N, Hattori K, Kato T, Takeda H, Kondoh M (2024) Association of plasma claudin-5 with age and Alzheimer disease. *Int J Mol Sci* **25**,.
- [69] Vendemiale G, Romano AD, Dagostino M, de Matthaeis A, Serviddio G (2013) Endothelial dysfunction associated with mild cognitive impairment in elderly population. *Aging Clin Exp Res* **25**, 247–255.
- [70] Shin YK, Seol GH (2023) Effects of linalyl acetate on oxidative stress, inflammation and endothelial dysfunction: can linalyl acetate prevent mild cognitive impairment? *Front Pharmacol* **14**, 1233977.
- [71] Song K, Li Y, Zhang H, An N, Wei Y, Wang L, Tian C, Yuan M, Sun Y, Xing Y, Gao Y (2020) Oxidative Stress-Mediated Blood-Brain Barrier (BBB) Disruption in Neurological Diseases. *Oxid Med Cell Longev* **2020**,.
- [72] Hamel E, Nicolakakis N, Aboukassim T, Ongali B, Tong X-K (2008) Oxidative stress and cerebrovascular dysfunction in mouse models of Alzheimer's disease. *Exp Physiol* **93**, 116–120.
- [73] Merlini M, Shi Y, Keller S, Savarese G, Akhmedov A, Derungs R, Spescha RD, Kulic L, Nitsch RM, Lüscher TF, Camici GG (2017) Reduced nitric oxide bioavailability mediates cerebroarterial dysfunction independent of cerebral amyloid angiopathy in a mouse model of Alzheimer's disease. *Am J Physiol Heart Circ Physiol* **312**, H232–H238.
- [74] Badhwar A, Lerch JP, Hamel E, Sled JG (2013) Impaired structural correlates of memory in Alzheimer's disease mice. *Neuroimage Clin* **3**, 290–300.
- [75] Badhwar A, Brown R, Stanimirovic DB, Haqqani AS, Hamel E (2017) Proteomic differences in brain vessels of Alzheimer's disease mice: Normalization by PPAR γ agonist pioglitazone. *J Cereb Blood Flow Metab* **37**, 1120–1136.
- [76] Li W, Busu C, Circu ML, Aw TY (2012) Glutathione in cerebral microvascular endothelial biology and pathobiology: implications for brain homeostasis. *Int J Cell Biol* **2012**, 434971.
- [77] Song J, Kang SM, Lee WT, Park KA, Lee KM, Lee JE (2014) Glutathione protects brain endothelial cells from hydrogen peroxide-induced oxidative stress by increasing nrf2 expression. *Exp Neurobiol* **23**, 93–103.
- [78] Buşu C, Li W, Caldito G, Aw TY (2013) Inhibition of glutathione synthesis in brain endothelial cells lengthens S-phase transit time in the cell cycle: Implications for proliferation in recovery from oxidative stress and endothelial cell damage. *Redox Biol* **1**, 131–139.
- [79] Schuff N, Meyerhoff DJ, Mueller S, Chao L, Sacrey DT, Laxer K, Weiner MW (2006) N-acetylaspartate as a marker of neuronal injury in neurodegenerative disease. *Adv Exp Med Biol* **576**, 241–62; discussion 361–3.
- [80] Moffett JR, Ross B, Arun P, Madhavarao CN, Namboodiri AMA (2007) N-Acetylaspartate in the CNS: from neurodiagnostics to neurobiology. *Prog Neurobiol* **81**, 89–131.
- [81] Ghosh D, LeVault KR, Brewer GJ (2014) Dual-energy precursor and nuclear erythroid-related factor 2 activator treatment additively improve redox glutathione levels and neuron survival in aging and Alzheimer mouse neurons upstream of reactive oxygen species. *Neurobiol Aging* **35**, 179–190.
- [82] Hashimoto S, Matsuba Y, Takahashi M, Kamano N, Watamura N, Sasaguri H, Takado Y, Yoshihara Y, Saito T, Saido TC (2023) Neuronal glutathione loss leads to neurodegeneration involving gasdermin activation. *Sci Rep* **13**, 1109.
- [83] Fernandez-Fernandez S, Bobo-Jimenez V, Requejo-Aguilar R, Gonzalez-Fernandez S, Resch M, Carabias-Carrasco M, Ros J, Almeida A, Bolaños JP (2018) Hippocampal neurons require a large pool of glutathione to sustain dendrite integrity and cognitive function. *Redox Biol* **19**, 52–61.
- [84] Metastasio A, Rinaldi P, Tarducci R, Mariani E (2006) Conversion of MCI to dementia: role of proton magnetic resonance spectroscopy. *Neurobiology of*.
- [85] Marjańska M, McCarten JR, Hodges JS, Hemmy LS, Terpstra M (2019) Distinctive Neurochemistry in Alzheimer's Disease via 7 T In Vivo Magnetic Resonance

- Spectroscopy. *J Alzheimers Dis* **68**, 559–569.
- [86] Hnilicova P, Kantorova E, Sutovsky S, Grofik M, Zelenak K, Kurca E, Zilka N, Parvanovova P, Kolisek M (2023) Imaging Methods Applicable in the Diagnostics of Alzheimer's Disease, Considering the Involvement of Insulin Resistance. *Int J Mol Sci* **24**,.
- [87] Matsuoka K, Hirata K, Kokubo N, Maeda T, Tagai K, Endo H, Takahata K, Shinotoh H, Ono M, Seki C, Tatebe H, Kawamura K, Zhang M-R, Shimada H, Tokuda T, Higuchi M, Takado Y (2024) Investigating neural dysfunction with abnormal protein deposition in Alzheimer's disease through magnetic resonance spectroscopic imaging, plasma biomarkers, and positron emission tomography. *NeuroImage Clin* **41**, 103560.
- [88] Kantarci K, Weigand SD, Przybelski SA, Shiung MM, Whitwell JL, Negash S, Knopman DS, Boeve BF, O'Brien PC, Petersen RC, Jack CR Jr (2009) Risk of dementia in MCI: combined effect of cerebrovascular disease, volumetric MRI, and 1H MRS. *Neurology* **72**, 1519–1525.
- [89] Chen Q, Abrigo J, Liu W, Han EY, Yeung DKW, Shi L, Au LWC, Deng M, Chen S, Leung EYL, Ho CL, Mok VCT, Chu WCW (2022) Lower posterior cingulate N-acetylaspartate to creatine level in early detection of biologically defined Alzheimer's disease. *Brain Sci* **12**, 722.
- [90] Lin C-H, Lane H-Y (2021) Plasma Glutathione Levels Decreased with Cognitive Decline among People with Mild Cognitive Impairment (MCI): A Two-Year Prospective Study. *Antioxidants (Basel)* **10**,.
- [91] Hernanz A, De la Fuente M, Navarro M, Frank A (2007) Plasma aminothiols, but not serum tumor necrosis factor receptor II and soluble receptor for advanced glycation end products, are related to the cognitive impairment in Alzheimer's disease and mild cognitive impairment patients. *Neuroimmunomodulation* **14**, 163–167.
- [92] Schmitt B, Vicenzi M, Garrel C, Denis FM (2015) Effects of N-acetylcysteine, oral glutathione (GSH) and a novel sublingual form of GSH on oxidative stress markers: A comparative crossover study. *Redox Biol* **6**, 198–205.
- [93] Pocernich CB, Butterfield DA (2012) Elevation of glutathione as a therapeutic strategy in Alzheimer disease. *Biochim Biophys Acta* **1822**, 625–630.
- [94] Rapado-Castro M, Dodd S, Bush AI, Malhi GS, Skvarc DR, On ZX, Berk M, Dean OM (2017) Cognitive effects of adjunctive N-acetyl cysteine in psychosis. *Psychol Med* **47**, 866–876.
- [95] Lacalle-Aurioles M, Trigiani LJ, Bourourou M, Lecrux C, Hamel E (2022) Alzheimer's disease and cerebrovascular pathology alter inward rectifier potassium (KIR 2.1) channels in endothelium of mouse cerebral arteries. *Br J Pharmacol* **179**, 2259–2274.
- [96] Gaetani GF, Galiano S, Canepa L, Ferraris AM, Kirkman HN (1989) Catalase and glutathione peroxidase are equally active in detoxification of hydrogen peroxide in human erythrocytes. *Blood* **73**, 334–339.
- [97] Cenini G, Lloret A, Cascella R (2019) Oxidative stress in neurodegenerative diseases: From a mitochondrial Point of View. *Oxid Med Cell Longev* **2019**, 2105607.
- [98] Zhang R, Zhang L, Li Z, Zhang P, Song H, Yao D-A, Cao J, Zhang J-J (2022) Green tea improves cognitive function through reducing AD-pathology and improving anti-oxidative stress capacity in Chinese middle-aged and elderly people. *Front Aging Neurosci* **14**, 919766.