

1 Supporting Information

This is the Supporting Information accompanying *The GeoTox Package: Open-source software for connecting spatiotemporal exposure to individual and population-level risk*. This document contains figures S1, S2, and S3.

KCC2: Genotoxic Effects

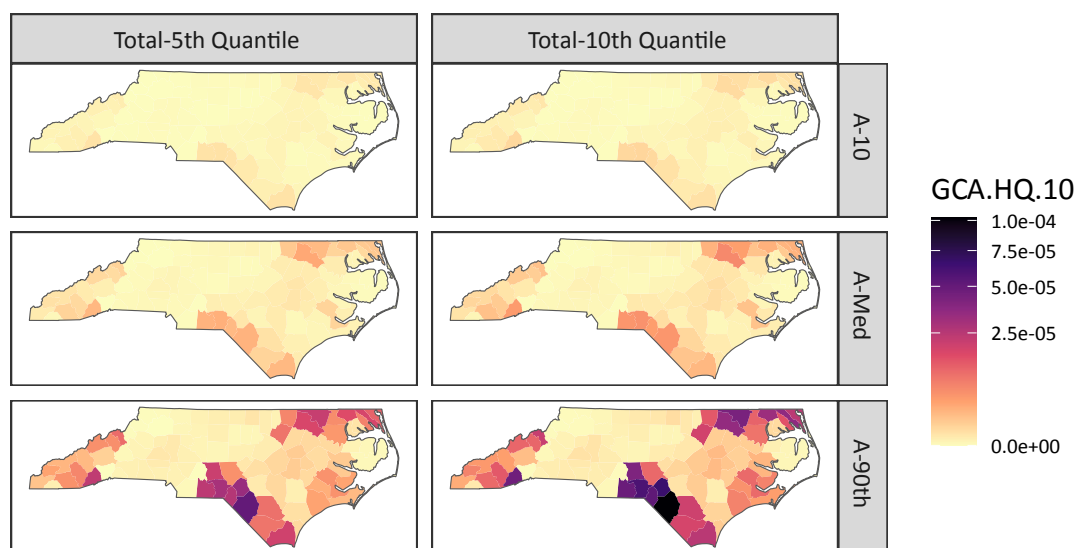


Figure S1: Multi-assay risk summaries for Key Characteristic of Carcinogens group 5 (genotoxic effects) mapped across North Carolina counties

KCC5: Oxidative Stress

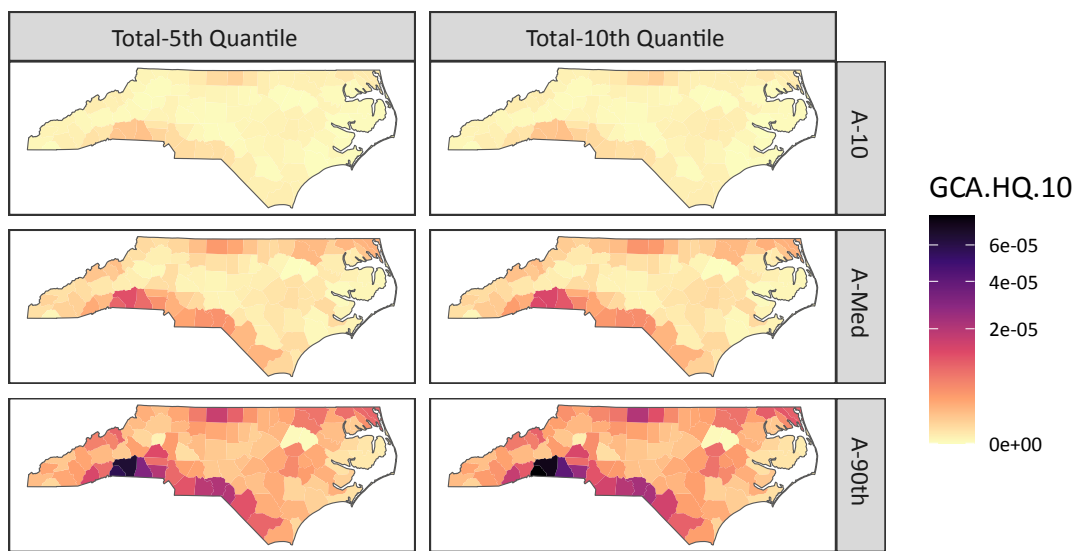


Figure S2: Multi-assay risk summaries for Key Characteristic of Carcinogens group 5 (oxidative stress) mapped across North Carolina counties

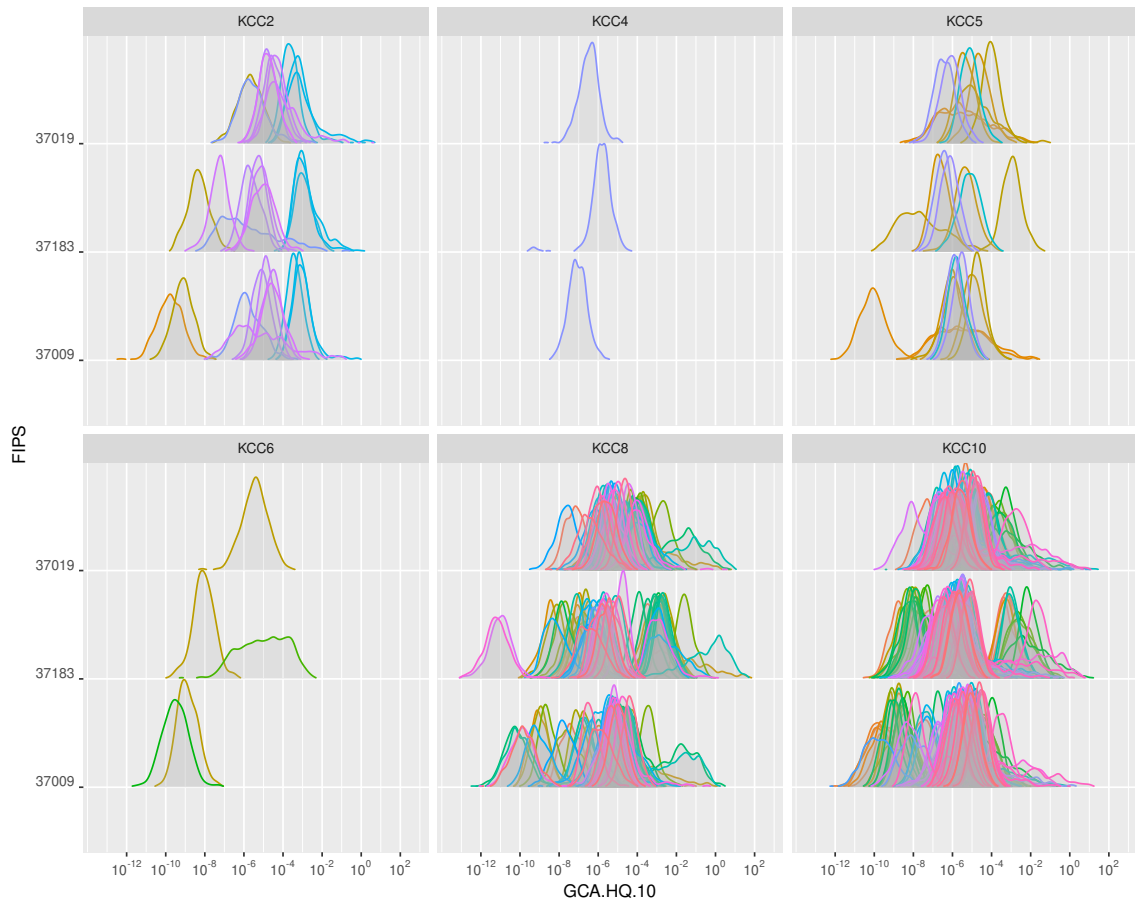


Figure S3: Hazard Quotient density by KCC mode of action