

Secular trends of incidence and prevalence of parkinsonism and subtypes: A cohort study in the United Kingdom

Authors:

Xihang Chen, MMath, ORCID: 0009-0001-8112-8959¹,
Nicola L. Barclay, PhD, ORCID: 0000-0002-6500-9909¹,
Marta Pineda-Moncusí, PhD, ORCID: 0000-0003-0567-0137¹,
Martí Català Sabaté, PhD, ORCID: 0000-0003-3308-9905¹,
Laura Molina-Porcel, MD, PhD, ORCID: 0000-0003-4068-8578^{2,3},
Wai Yi Man, MSc, ORCID: 0009-0001-7862-4628¹,
Antonella Delmestri, PhD, ORCID: 0000-0003-0388-3403¹,
Daniel Prieto-Alhambra, MD, MSc, PhD, ORCID: 0000-0002-3950-6346^{1,4},
Annika M. Jödicke, PhD, ORCID: 0000-0002-0000-0110¹,
Danielle Newby, PhD, ORCID: 0000-0002-3001-1478¹

Affiliations:

1 Nuffield Department of Orthopaedics, Rheumatology and Musculoskeletal Sciences, University of Oxford

2 Neurological Tissue Bank of the Biobanc-Hospital Clinic-Fundació de Recerca Clínic Barcelona-Institut d'Investigacions Biomèdiques August Pi i Sunyer (FRCB-IDIBAPS), 08036 Barcelona, Spain

3 Alzheimer's disease and other cognitive disorders unit. Neurology Service. Hospital Clínic. FRCB-IDIBAPS, Barcelona, Spain.

4 Department of Medical Informatics, Erasmus University Medical Centre, Rotterdam, The Netherlands

Correspondence to:

Professor Daniel Prieto Alhambra

Centre for Statistics in Medicine, Nuffield Department of Orthopaedics, Rheumatology and Musculoskeletal Sciences, University of Oxford, Oxford, UK. +44 1865 741155

daniel.prietoalhambra@ndorms.ox.ac.uk

Abstract word count:

241 words

Manuscript word count:

3976 words

Tables and Figures:

Table: 1, Figures: 4.

NOTE: This preprint reports new research that has not been certified by peer review and should not be used to guide clinical practice.

Relevant conflict of interest/financial disclosures:

Professor Daniel Prieto-Alhambra research group has received research grants from the European Medicines Agency, from the Innovative Medicines Initiative, from Amgen, Chiesi, and from UCB Biopharma; and consultancy or speaker fees (paid to his department) from Astellas, Amgen, Astra Zeneca, and UCB Biopharma. All other authors declare no conflicts of interest.

Funding agency:

The author(s) declare that financial support was received for the research, authorship, and/or publication of this work. This research was partially funded by the European Health Data and Evidence Network (EHDEN). This activity under the EHDEN has received funding from the Innovative Medicines Initiative 2 (IMI2) Joint Undertaking under grant agreement No 806968. IMI2 receives support from the European Union's Horizon 2020 research and innovation program and European Federation of Pharmaceutical Industries and Associations (EFPIA). The sponsors of the study did not have any involvement in the writing of the manuscript or the decision to submit it for publication. Additionally, there was partial support from the Oxford NIHR Biomedical Research Centre.

Abstract:

Background:

While summarized under the umbrella term “Parkinsonism”, several subtypes with different etiologies exist, including Parkinson’s Disease, Vascular Parkinsonism and Drug-induced Parkinsonism. However, evidence on their incidence and prevalence remains limited.

Objectives:

To evaluate secular trends of incidence and prevalence of parkinsonism, Parkinson’s Disease, Vascular Parkinsonism, and Drug-induced Parkinsonism from 2007 to 2021 in the United Kingdom.

Methods:

We used primary care data, Clinical Practice Research Datalink GOLD, from the United Kingdom. Individuals were included if they were registered from January 2007 to December 2021 with at least one year of prior observation. Incidence and prevalence were calculated on a yearly basis with 95% confidence intervals and then stratified by age and sex.

Results:

From 2007 to 2019, the incidence of parkinsonism and Parkinson's Disease decreased, with Parkinson's Disease incidence dropping from 35.86 (95% confidence interval: 34.22 – 37.56) to 31.40 (29.40 – 33.50) per 100,000 person-years. The prevalence of parkinsonism and Parkinson’s Disease increased from 0.22% (0.22% - 0.23%) and 0.21% (0.21% - 0.22%) in 2007 to peak in 2016 with 0.25% (0.25% - 0.26%) and 0.23% (0.23% - 0.24%) respectively. The number of Vascular Parkinsonism diagnoses have increased from 2010, whereas incidence and prevalence of Drug-induced Parkinsonism remained stable. Incidence and prevalence increased with age and were generally higher in males, except for Drug-induced Parkinsonism, which was slightly higher in females.

Conclusions:

Given its association with aging, parkinsonism and these subtypes continue to present an increasing challenge to our aging society.

Keywords:

Incidence, Prevalence, Parkinson’s Disease, Drug-induced Parkinsonism, Vascular Parkinsonism

Abstract Word Count: 241

Introduction:

Parkinsonism is an umbrella term used to describe a syndrome characterized by symptoms including muscle rigidity, tremors and slowness of movement [1]. These symptoms are commonly associated with Parkinson's disease (PD), which is caused by the progressive degeneration and loss of dopamine-producing neurons in the brain, particularly in the substantia nigra [2]. PD is the second most common age-related neurodegenerative disease after Alzheimer's Disease [2]. It not only poses a major burden on affected patients but is also becoming an increasingly significant financial burden on society [3].

Parkinsonism can also be caused by other conditions and factors, with other subtypes including Vascular Parkinsonism (VP) and Drug-induced Parkinsonism (DIP) as well as other progressive brain conditions [1]. VP is caused by ischemic cerebrovascular diseases which affect the brain areas involved in movement control, such as the basal ganglia, rather than a gradual loss of nerve cells observed in PD [4]. On the other hand, DIP is caused by medications that block dopamine receptors in the brain [5,6]. Drugs known to induce DIP include certain antipsychotics, antidepressants, and antiepileptics; however, symptoms can be reversible after withdrawal of the causative drug [5,6].

Critically, there is a lack of up-to-date evidence on the secular trends of the incidence and prevalence of parkinsonism and these subtypes, particularly in different sex and age groups. Studies have been carried out to investigate the incidence and prevalence of PD, however they did not consider parkinsonism and other subtypes of parkinsonism and have shown different temporal trends around the globe [7–10]. For example, a study in Norway has shown stable incidence and increasing prevalence [8] while a study in South Korea has shown increasing incidence and increasing prevalence [9]. Moreover, although other studies considered parkinsonism and subtypes, they were conducted regionally which may affect its generalizability [11,12]. Furthermore, although these two studies stratified results by sex and age groups, they did not consider temporal trends within each group.

In the light of this, a comprehensive assessment of disease burden over time is vital to better inform decisions regarding screening and prevention. Therefore, the aim of this study is to examine the secular trends of incidence and prevalence of parkinsonism, PD, VP and DIP from 2007 to 2021 in the UK for the whole population and stratified by age and sex.

Methods:

Study design, setting, and data sources:

This was a descriptive, population-based cohort study using routinely collected primary care data from the United Kingdom (UK). The database for this study was the Clinical Practice Research Datalink (CPRD) GOLD database. CPRD GOLD is an established database documenting the pseudo-anonymized patient-level data contributed by General Practitioners (GPs) across the UK, covering approximately 7% of the UK population [13]. CPRD GOLD was mapped to OMOP (Observational Medical Outcomes Partnership) CDM (Common Data Model) [14] to standardize analytics. The use of CPRD GOLD for this study was approved through CPRD's Research Data Governance (RDG) Process (Protocol number: 22_002351).

Study participants and time at risk:

People were eligible for this study if they were aged above 18 with at least one year of prior observation registered in CPRD GOLD from 1st Jan 2007 to 31st Dec 2021. This formed the background population and was used to calculate time at risk in person-years. Individuals with a diagnosis of parkinsonism were included as the study population. They could also contribute to one or more subtype cohorts (PD, VP and/or DIP) when stratifying the analysis by these subtypes. However, not every individual with a

diagnosis of parkinsonism needed to be part of the PD, VP, or DIP cohorts, as other subtypes, such as toxin-induced parkinsonism, were included to form the definition of parkinsonism.

Individuals were followed up to whichever came first: outcome of interest, practice stopped contributing to the database, patient left the practice, date of death, or the 31st of December 2021 (the end of the study period). For those diagnosed with either parkinsonism, PD or VP, each individual only contributed person-years once whereas for DIP, an individual could contribute person-years multiple times after one year washout from each DIP diagnosis.

Outcome definitions:

There were four study outcomes of interest: parkinsonism and three subtypes - PD, VP and DIP. Systematized Nomenclature of Medicine Clinical Terms (SNOMED CT) diagnostic codes were used for this study to identify diagnoses of parkinsonism, PD, VID and DIP using the R package CodelistGenerator [15]. The resulting computable phenotypes were then refined with the aid of R package CohortDiagnostics [16]. This package was used to identify additional codes of interest and to remove those highlighted as irrelevant based on feedback from clinicians with primary care and neurology expertise through an iterative process during the initial stages of analyses. The code lists used to define all the outcomes for this study can be found in Supplementary Table S1.

Statistical methods:

Baseline Characteristics

Baseline characteristics were summarized for patients with a diagnosis of parkinsonism, PD, VP, and DIP, respectively, using the R package PatientProfiles [17]. Median and IQR (interquartile range) were used for continuous variables whereas counts and percentages were used for categorical variables. The baseline characteristics included age, sex, conditions any time prior and medications within one year prior to the first onset of each study outcome.

Annual Crude Incidence Rates

For each year of the study period, a crude incidence rate was calculated for each outcome. For each incidence calculation, an individual can contribute at most once. Moreover, if an outcome of interest took place prior to 1st Jan 2007 then this individual can no longer contribute time at risk. The incidence was calculated as a fraction between the number of incident cases and time at risk in person-years contributed by the background population that year. The rates calculated were then expressed as per 100,000 person-years with 95% confidence intervals (CIs).

Annual Crude Period Prevalence

Annual period prevalence was calculated for each outcome and expressed as percentages. The denominator was the number of people in the background population in the year of interest whereas the numerator was the number of cases of each outcome that year with 95% CIs calculated.

Incidence and Prevalence Stratification

All results were stratified by sex and by age. The age bands for the stratification were in 10 years except the first (18-30) and the last age band (80+). To protect patient privacy, we do not report results with fewer than five cases.

Annual Incidence and Prevalence Age Standardization

Age-standardized incidence rates and prevalence overall and by sex were calculated using 2013 European Standardized Population (ESP2013) [18]. ESP2013 serves as a standard age distribution to account for the change in age structure throughout the study period, and thus offers an age-standardized

perspective on secular trends. The age groups in ESP2013 were merged and scaled so that the age groups were in ten-years except the first one which was 18-29.

All incidence and prevalence analyses were performed using R (version 4.2.3) and the R package IncidencePrevalence [19]. The analytical code for this study can be accessed via <https://github.com/oxford-pharmacoepi/ParkinsonsIncidencePrevalence>.

Results:

Baseline Characteristics:

Out of a total of 17,054,819 people available in CPRD GOLD from 1st Jan 2007 to 31st Dec 2021, 9,604,592 were eligible for this study. The attrition tables for each analysis can be found in Supplementary Table S2. There was a total of 21,680, 20,006, 1126 and 809 patients with a diagnosis of Parkinsonism, PD, VP and DIP, respectively, across the study period (Table 1).

Table 1: Baseline characteristics of patients with a diagnosis of parkinsonism and the subtypes PD, VP, and DIP between 2007 and 2021.

Characteristic	Parkinsonism	PD	VP	DIP
Number of patients	21680	20006	1129	809
Sex: Female, n (%)	8516 (39.3)	7793 (39)	394 (39)	450 (55.6)
Age: Median (IQR)	76 (68-81)	75 (68-81)	80 (75-84)	71 (63-80)
Age Bands: n (%)				
18 to 30	21 (0.1)	12 (0.1)	0 (0)	9 (1.1)
31 to 40	69 (0.3)	56 (0.3)	0 (0)	9 (1.1)
41 to 50	391 (1.8)	356 (1.8)	<5	33 (4.1)
51 to 60	1581 (7.3)	1473 (7.4)	15 (1.3)	102 (12.6)
61 to 70	4694 (21.7)	4412 (22.1)	107 (9.5)	225 (27.8)
71 to 80	8685 (40.1)	8083 (40.4)	478 (42.3)	245 (30.3)
81 to 90	5707 (26.3)	5146 (25.7)	477 (42.2)	170 (21)
91 to 100	530 (2.4)	467 (2.3)	50 (4.4)	15 (1.9)
>100	<5	<5	0 (0)	<5
General Conditions (any time prior): n (%)				
Pneumonia	631 (2.9)	558 (2.8)	62 (5.5)	42 (5.2)
Gastroesophageal reflux disease	729 (3.4)	666 (3.3)	58 (5.1)	25 (3.1)
Chronic kidney disease	3921 (18.1)	3507 (17.5)	329 (29.1)	181 (22.4)
Stroke	1044 (4.8)	841 (4.2)	189 (16.7)	59 (7.3)
Anxiety	3741 (17.3)	3392 (17)	194 (17.2)	237 (29.3)
Dementia	1817 (8.4)	1582 (7.9)	188 (16.7)	91 (11.2)
Cardiovascular disease*	7753 (35.8)	6911 (34.5)	724 (64.1)	274 (33.9)
Hyperlipidemia	2372 (10.9)	2187 (10.9)	137 (12.1)	99 (12.2)
Diabetes	2631 (12.1)	2346 (11.7)	226 (20)	130 (16.1)
Myocardial infarction	783 (3.6)	683 (3.4)	87 (7.7)	24 (3)
Venous thromboembolism	1070 (4.9)	972 (4.9)	75 (6.6)	43 (5.3)
Malignant neoplastic disease	3035 (14)	2754 (13.8)	224 (19.8)	100 (12.4)
Chronic obstructive pulmonary disease	1130 (5.2)	1018 (5.1)	101 (8.9)	47 (5.8)

Heart failure	796 (3.7)	706 (3.5)	80 (7.1)	24 (3)
Osteoporosis	1367 (6.3)	1218 (6.1)	120 (10.6)	46 (5.7)
Asthma	1757 (8.1)	1628 (8.1)	96 (8.5)	69 (8.5)
Depressive disorder	3507 (16.2)	3094 (15.5)	228 (20.2)	273 (33.7)
Hypertension	6407 (29.6)	5902 (29.5)	434 (38.4)	198 (24.5)
Medications (one year prior): n (%)				
Psycholeptics	5638 (26)	4790 (23.9)	288 (25.5)	688 (85)
Diuretics	6066 (28)	5520 (27.6)	436 (38.6)	222 (27.4)
Opioids	6598 (30.4)	6049 (30.2)	391 (34.6)	274 (33.9)
Antibacterials systemic	8958 (41.3)	8085 (40.4)	608 (53.9)	415 (51.3)
Systemic corticosteroids	1944 (9)	1783 (8.9)	117 (10.4)	88 (10.9)
Beta blocking agents	6038 (27.9)	5560 (27.8)	342 (30.3)	200 (24.7)
Drugs for obstructive airway disease	4393 (20.3)	4049 (20.2)	257 (22.8)	167 (20.6)
Calcium channel blockers	5096 (23.5)	4685 (23.4)	322 (28.5)	169 (20.9)
Anti-inflammatory antirheumatic	5010 (23.1)	4682 (23.4)	212 (18.8)	191 (23.6)
Renin-angiotensin-system (RAS)-acting agents	7544 (34.8)	6918 (34.6)	524 (46.4)	221 (27.3)
Antiepileptics	2482 (11.4)	2103 (10.5)	173 (15.3)	271 (33.5)
Drugs for acid related disorder	8817 (40.7)	8006 (40)	566 (50.1)	387 (47.8)
Antidepressants	7153 (33)	6365 (31.8)	446 (39.5)	468 (57.8)
Antithrombotics	3818 (17.6)	3344 (16.7)	440 (39)	136 (16.8)
Drugs used in diabetes	2539 (11.7)	2262 (11.3)	208 (18.4)	125 (15.5)
Lipid modifying agents	9750 (45)	8810 (44)	711 (63)	390 (48.2)

IQR: Interquartile range; PD: Parkinson's Disease; VP: Vascular Parkinsonism; DIP: Drug-induced Parkinsonism

*Cardiovascular diseases included venous thrombosis, pulmonary embolism, peripheral vascular disease, ischemic heart disease, heart failure, heart disease, coronary arteriosclerosis, cerebrovascular disease, and atrial fibrillation

Table 1 shows that parkinsonism, PD and VP patients were more common in males (M: ~60%) whereas for DIP it was more common in females (F: 55.6%). Those diagnosed with VP had the highest median age (80 years, IQR: 75-84) whereas the median age for DIP was the lowest (71 years, IQR: 63-80). This was also reflected in their respective age group composition; for example, the percentage of VP patients aged above 80 was 46.6% whereas the same percentage for each parkinsonism, PD, and DIP was no greater than 30%.

Patients diagnosed with VP were more likely to have chronic kidney disease (CKD), dementia, myocardial infarction, stroke, hypertension, and cardiovascular disease with more prescriptions for diuretics, antithrombotics, RAS-acting agents and lipid modifying agents within one year prior to the first onset compared to parkinsonism, PD and DIP. Similarly, patients diagnosed with DIP were more likely to be diagnosed with anxiety and depressive disorder, and to be prescribed with antidepressants, antiepileptics and psycholeptics compared to parkinsonism, PD and VP.

Crude Incidence:

The annual incidence of parkinsonism and PD decreased slightly from 2007 to 2019, with the incidence of PD being 35.86 per 100,000 person-years (pys) (95% CI: 34.22 – 37.56) and 31.40 per 100,000 pys (29.40 – 33.50) in 2007 and 2019 respectively (Figure 1). In 2020 and 2021, during the COVID-19 pandemic, this incidence dipped to 22.90 (21.13 – 24.76) and 28.72 (26.64 – 30.93). The incidence of VP increased from 0.17 (0.08 – 0.33) in 2009 to 2.03 in 2021 (1.51 – 2.68), peaking in 2019 with 3.18 per 100,000 pys (2.57 – 3.90). The incidence of DIP fluctuated between 0.9 to 1.6 per 100,000 pys across the whole study period.

All stratified incidence results can be viewed and downloaded from an interactive Shiny web application (<https://dpa-pde-oxford.shinyapps.io/ParkinsonismIncidencePrevalenceShiny/>).

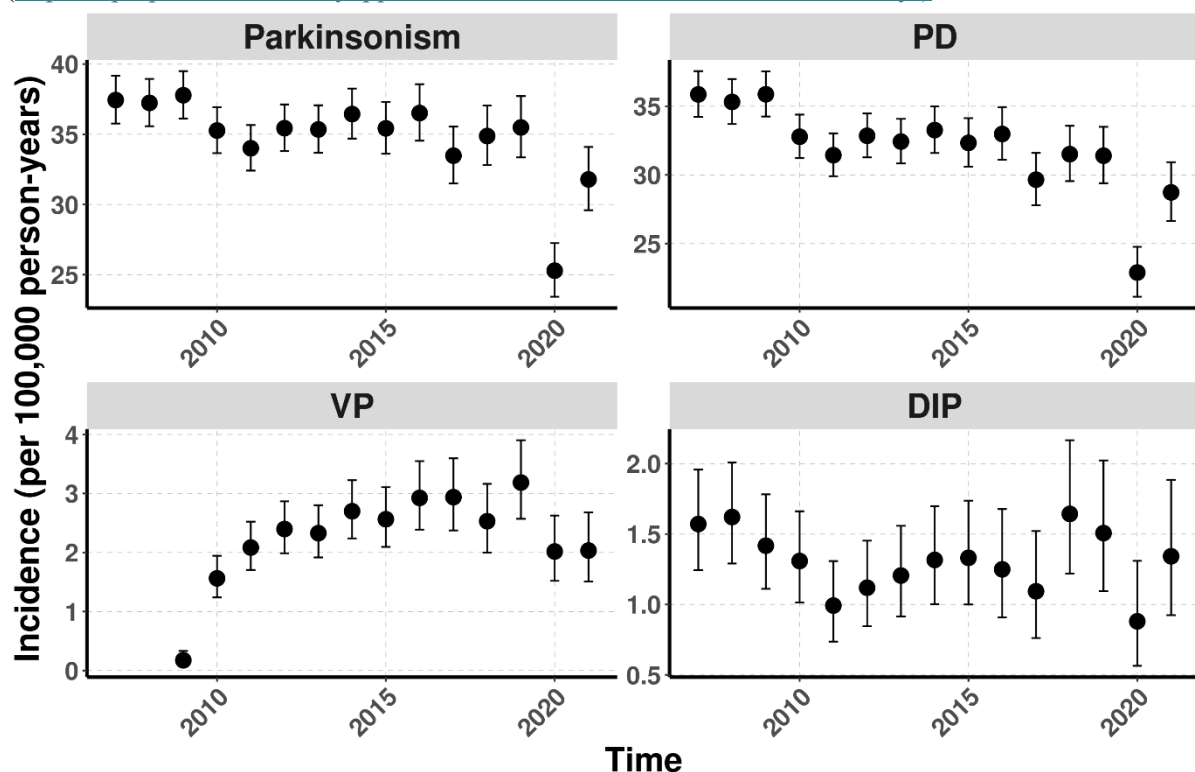


Figure 1: Overall annual incidence of parkinsonism, PD, VP and DIP in CPRD GOLD from 2007 to 2021

When stratifying by sex, incidence of parkinsonism and PD were higher in males than females (Figure 2). From 2007 to 2019, the incidence of parkinsonism and PD decreased for females whereas the

incidence for males remained relatively stable. For example, the incidence of parkinsonism for females was 30.65 (28.54 – 32.88) and 27.03 (24.44 – 29.82) per 100,000 pys, respectively, in 2007 and 2019; whereas the same incidence for males was 44.43 (41.84 – 47.14) and 44.16 (40.80 – 47.74) in 2007 and 2019. The annual incidence of VP for females was comparably lower than males; the incidence of VP for females fluctuated whereas the same incidence for males an overall increase was observed. The incidence of DIP for both sexes fluctuated but the incidence for females mostly remained slightly higher than males throughout the study period.

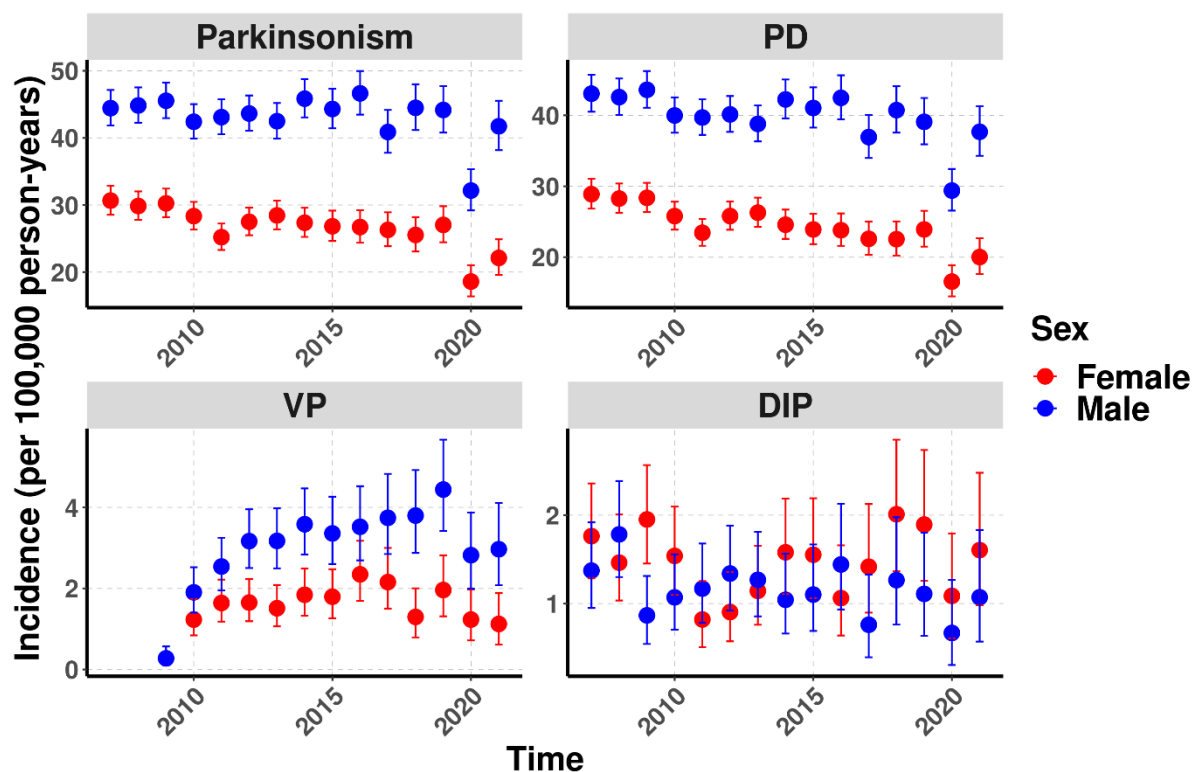


Figure 2: Annual incidence of parkinsonism, PD, VP and DIP stratified by sex from 2007 to 2021

When stratifying by age, the incidence of parkinsonism and subtypes increased with age (Supplementary Figures 1-4). The rates were stable for those under 70 years of age. For those aged over 70, the incidence of parkinsonism and PD decreased whereas the incidence of VP increased. For example, for those aged over 80, the incidence of PD was 207.80 per 100,000 pys (190.76 – 225.95) in 2007 and 152.21 per 100,000 pys (133.96 - 172.25) in 2019 and the incidence of VP was 13.06 (9.15 – 18.08) and 29.40 (21.75 – 38.86) in 2010 and 2019 respectively. The rates for DIP were relatively stable for all age bands considered.

When stratifying by age and sex, the incidence of parkinsonism, PD and VP remained higher for males than females across all age bands (Supplementary Figures 5-8). For both sexes aged between 71 and 80 and above 80, the incidence of parkinsonism and PD of each strata decreased whereas the incidence of VP increased from 2007 to 2019. Since the number of DIP cases were low, no trends were observed; however, the rates were often higher for females than males within the same age band.

Crude Prevalence:

From 2007, the annual prevalence of parkinsonism and PD gradually increased to reach 0.25% (0.25% - 0.26%) and 0.23% (0.23% - 0.24%) in 2016 respectively (Figure 3). Both then dipped in 2017 and 2018 before peaking in 2019 with a decline in 2020 and 2021. There was an increasing recording of VP

from 2010 onwards, with prevalence being largely stable from 2017 onwards. The prevalence of DIP remained stable (0.002% to 0.003%) throughout the study period.

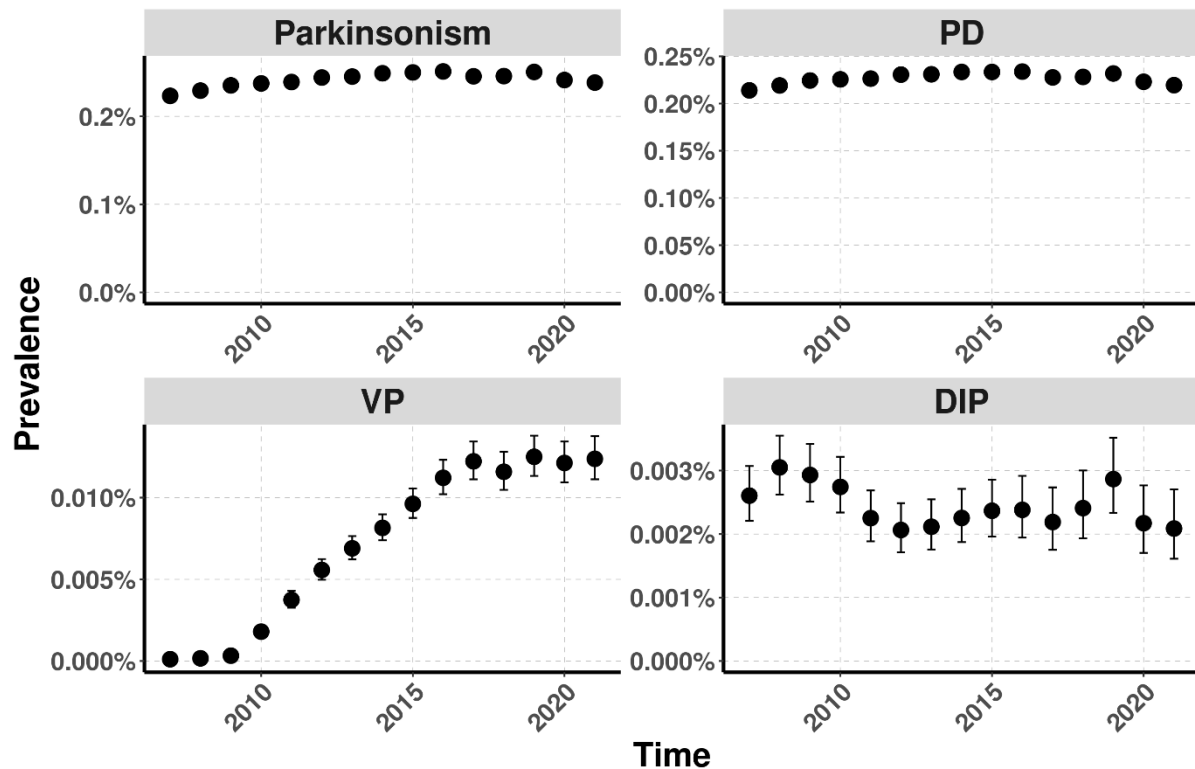


Figure 3: Overall annual prevalence of parkinsonism, PD, VP and DIP in CPRD GOLD from 2007 to 2021

Prevalence of parkinsonism and PD were consistently higher in males than females (Figure 4). Males showed increasing trends whereas females showed stable trends from 2007 to 2019. For example, the prevalence of PD for males was 0.25% in 2007 and increased to 0.29% in 2019 whereas the same prevalence for females was both 0.18% in 2007 and 2019. The prevalence for both sexes then declined from 2019 to 2021. For VP, the number of recordings for both sexes increased from 2010 until 2019, where both remained stable thereafter. The prevalence of DIP for both sexes remained relatively stable with females having slightly higher values than males throughout the study period; the prevalence mostly fluctuated between 0.002% to 0.004% for females and 0.001% to 0.003% for males.

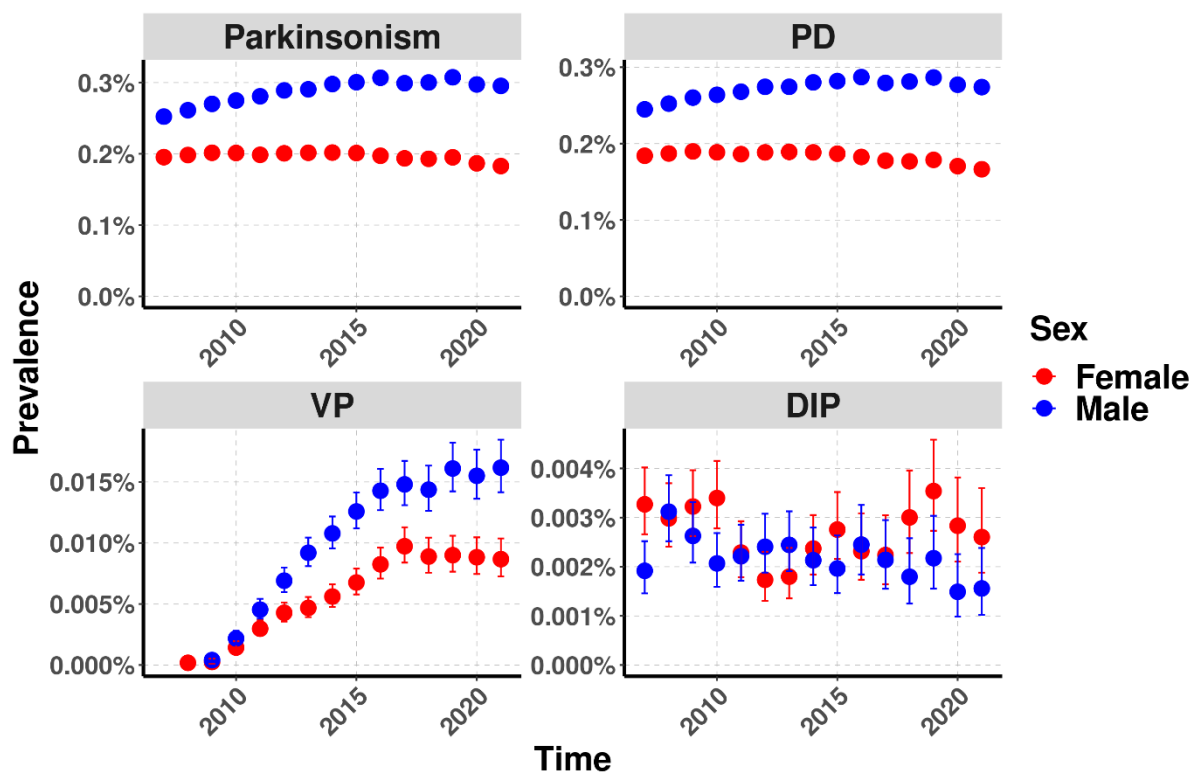


Figure 4: Annual prevalence of parkinsonism, PD, VP and DIP stratified by sex from 2007 to 2021

The prevalence of parkinsonism and subtypes increased with age, though such effect was not as strong for DIP (Supplementary Figures 9-12). The prevalence of parkinsonism and PD was either stable or it increased slightly and then decreased slightly. For example, for the 71-80 age band, the prevalence of parkinsonism and PD increased from 2007 (parkinsonism: 0.99%, PD: 0.96%) to 2012 (parkinsonism: 1.08%, PD: 1.03%) and decreased from 2012 to 2021 (parkinsonism: 0.93%, PD: 0.87%). The prevalence of VP remained stable for people under 70-years of age whereas the same prevalence for people aged over 70 increased steadily throughout the study period. For example, the prevalence for the 80+ age band started with 0.01% in 2010 (data was insufficient in 2007 to 2009), it increased to 0.11% in 2021 and peaked at 0.12% in 2019. The prevalence of DIP for each age band remained stable.

When stratifying by both age and sex, the prevalence of parkinsonism and PD showed an overall decreasing trend for females aged between 61 and 70 and an overall increasing trend for males in the same age band. The annual prevalence of PD for females aged between 71 and 80 and both males and females aged above 80 all showed an overall decrease. For people over 80-years of age, the prevalence of VP in males showed a larger increase over time compared to females. The prevalence of DIP remained stable across all strata (Supplementary Figures 13-16).

Age-standardized Incidence and Prevalence:

Age-standardized incidence and prevalence of parkinsonism and subtypes followed the same secular trends as the crude results, for the whole population and when stratified by sex (Supplementary Tables S3-S4, Supplementary Figures 17-20).

Discussion:

Key results

This study provides a comprehensive assessment on the secular changes of the incidence and prevalence and characterization of those with a diagnosis of parkinsonism, PD, VP and DIP in the UK. The incidence of parkinsonism and PD have slightly decreased over time with the prevalence slightly increasing. The number of VP diagnoses increased progressively from 2010 to 2018 and remained stable thereafter. The incidence and prevalence of DIP remained stable over time. The incidence and prevalence of PD and VP were higher in males than females and such disparity increased with age.

Demographic differences among individuals with parkinsonism subtypes

In line with previous studies, the most frequently observed parkinsonism subtype was PD [11,12,20]. The second most common subtype was VP, contributing ~5% of total parkinsonism cases, echoing The Rotterdam Study [20]. DIP contributed the least to total parkinsonism cases in this work, which contrasts with some previous studies that state DIP is the second most prevalent subtype of parkinsonism [5,21]. This could be explained by the underdiagnosis of DIP as a medical condition [6] and misclassification of DIP as PD [5]. Also, in line with literature, this study shows that males were twice as likely to develop PD and VP than females [22–25], whereas DIP was slightly more common in females [6,21,26], and that the median age of onset of VP was later than PD [27,28]. However, there are conflicting results about the average age of DIP onset compared to PD; this work and other studies have shown lower average age of DIP onset compared to PD [29–31] whilst another study has showed the opposite [5]. Such contrast could be attributed partially to the large variation in age among people who use these causative medications. For example, although antipsychotics are used more frequently in older populations [32], studies have shown that there has been an increasing trend in antipsychotics prescriptions in children and adolescents [33,34].

Since VP is characterized by having a previous episode of ischemic cerebrovascular disease before showing Parkinson-like symptoms, it is unsurprising that these patients have a higher proportion of cardiovascular diseases compared to patients diagnosed with PD or DIP due to the overlapping risk factors and etiologies between cardiovascular diseases and cerebrovascular diseases [35,36]. Although it is also unsurprising that the number of stroke cases is higher in VP patients compared to other subtypes, the percentage of VP patients diagnosed with stroke any time prior to VP diagnosis was low (<20%). This could be potentially explained by under-recording of stroke in primary healthcare settings [37]. Works have also demonstrated an association between cardiovascular disease and an increased risk of dementia [38], and that patients with CKD are more at risk of stroke [39], this may explain why the number of dementia and CKD cases are higher among VP patients.

Regarding DIP, these patients showed higher proportions of medications such as psycholeptics, antiepileptics and antidepressants one year before DIP diagnosis. These medications are known dopamine receptor antagonists with strong evidence of inducing Parkinson-like symptoms [5,6].

Incidence and prevalence of parkinsonism and PD

Since PD cases contributed the most to total parkinsonism cases, the temporal trends of PD largely mirror the trends of parkinsonism.

Prior studies in the UK reported much higher incidence values than our study [10,40]. For example, Okunoye *et al.* reported an incidence rate of 64.8 per 100,000 pys for PD in 2015 [10], whilst the same incidence rate was 32.3 per 100,000 pys in our study. The reason for this difference is due to the different age distribution of the study population. Our study includes those aged 18 and older with Okunoye *et al.* including those aged 50 and older. For our study, the age-specific crude incidence rate for those aged above 50 ranged from ~15 per 100,000 pys in those aged between 51 to 60 to ~160 per 100,000 pys in those aged above 80. On the other hand, in line with previous literature, our findings on secular trends show that the annual incidence of PD has decreased in the UK over time [10,40], and one potential reason for this slight decrease is the change of PD recordings in primary healthcare settings [40]. Regarding prevalence, our results are in line with a Reference Report from Parkinson's UK [41], also

using CPRD GOLD, which estimated the prevalence of PD in 2015 at 0.27% in people aged over 18 compared to a prevalence of 0.23% from our work. Aligning with other studies [42,43], our work shows that the prevalence of PD has increased over time and a potential driver for this increase might be better treatment and survival [43].

Concordant with existing literature, incidence and prevalence of PD are found to be higher in males [10,30,40,44]. Factors that may have contributed to such difference include genetics [45], a greater chance of developing traumatic head injury [46], and a greater exposure to adverse environmental factors due to working in industry sectors [47]. As expected, stratifying by age shows that incidence and prevalence of PD are higher in older age groups, and this can be explained by the nature of PD, which is characterized by the gradual and progressive presence of Lewy Bodies and loss of dopamine-producing neurons in the brain over time [2].

The incidence and prevalence of PD both decreased in 2020 and 2021 and a key factor behind this decline is the reduction of diagnosis during the pandemic. Delayed diagnoses will result in poorer outcomes, potentially increasing the number of Parkinson's disease-related deaths during the pandemic [48], and this also plays a role in reducing the prevalence of PD.

Incidence and prevalence of VP

The increase of incidence and prevalence of VP could be attributed to a better recognition of this atypical disorder in the UK [40]. As a medical condition, VP has been heavily debated over the years [27,49]. It has been established as a new entity only in 2001 [50], and the first set of strict clinical criteria of VP been only established in 2004 [51]. Our study shows that the incidence and prevalence of VP are higher in males and one reason that could explain this finding is higher incidence of stroke in males [52], as stroke often precedes VP [27]. Moreover, it has also been shown that the severity of strokes tends to be higher in females, who are typically older and have higher mortality rates [53]. This may further reduce incidence and prevalence of VP for females, older age of stroke onset and higher mortality from stroke in females may mean a lesser chance of developing VP. This disparity between sexes increased with age, and it could be explained by males being more likely to experience multiple strokes [54] and that the incidence of recurrent stroke increases with age [29].

Incidence and prevalence of DIP

In contrast to PD and VP, this study finds that DIP has a higher incidence and prevalence among females, which agrees with previous literature [5,31,55]. Reasons for this are multifaceted and likely to involve a combination of biological, pharmacokinetic, and social/behavioral factors. Females typically have higher body fat and lower body water percentages, which affects drug distribution and metabolism as well as hormonal differences such as estrogen that has been shown to influence drug metabolism [56,57]. Furthermore, females are also more likely to be prescribed medications that can cause DIP such as antidepressants [58] and antipsychotics [32,59] and are more likely to have polypharmacy leading to risk of side effects such as parkinsonism [57]. In contrast to Han *et al.* [55] where the incidence of DIP was decreasing, incidence and prevalence of DIP were both stable in this study. There are several reasons that can explain this difference including definition of DIP (the definition in Han *et al.* included the use of causative drugs) and population characteristics (the study in Han *et al.* was based in Asia).

Strengths and limitations

This study has many strengths. Firstly, this study used CPRD GOLD, a large primary health care database covering GPs from England, Wales, Scotland and Northern Ireland, and thus may improve generalizability across the UK. However, one may need to consider the change of the size of the database over time when interpreting the results. For example, the number of people in the database gradually decreased after 2011, likely due to GP practices in England moving to another clinical information system not captured in CPRD GOLD. Another strength of this study is that we have

analyzed the trends of the incidence and prevalence in each age and sex strata. In contrast to other studies [11,12,25], the inclusion of these stratified results can be useful in better informing which groups of people require more attention in terms of prevention.

One limitation of this study could be the misclassification of the subtypes, as previous literature suggests that VP and DIP cases could be misclassified as PD by healthcare professionals [5,6,27]. This means that the actual incidence and prevalence of PD might be overestimated whilst the incidence and prevalence of DIP and VP might be underestimated. Future works exploring stricter definitions of these subtypes are strongly advised. For example, the inclusion of causative drugs could be considered when defining DIP [55]. Similarly, although the UK Parkinson's Disease Society Brain Bank criteria has been validated to have high specificity and sensitivity [60], the addition of prescriptions of antiparkinsonian drugs such as levodopa can provide a stricter definition of PD.

Conclusion:

Though the incidence of parkinsonism and PD have been slowly decreasing, the prevalence of both have been slowly increasing, potentially suggesting improved survival and care. Both incidence and prevalence of VP have been steadily increasing which may suggest a change of diagnosis of VP and potentially a call for screening program for people who experience an episode of ischemic cerebrovascular disease. The incidence and prevalence of DIP have been stable throughout the study period. As the UK is known to have an ageing population, parkinsonism and subtypes pose an ever-increasing burden to the UK.

Abbreviations:

CDM: Common Data Model

CI: Confidence interval

CKD: Chronic Kidney Disease

CPRD: Clinical Practice Research Datalink

DIP: Drug-induced Parkinsonism

IQR: Inter-quartile range

OMOP: Observational Medical Outcomes Partnership

PD: Parkinson's Disease

pys: person-years

RAS: Renin-angiotensin-system

RDG: Research Data Governance

VP: Vascular Parkinsonism

Data Availability Statement:

This study is based in part on data from the Clinical Practice Research Datalink (CPRD) obtained under license from the UK Medicines and Healthcare Products Regulatory Agency. The data is provided by patients and collected by the NHS as part of their care and support. The interpretation and conclusions obtained in this study are those of the authors alone. Patient level data used in this study was obtained through an approved application to the CPRD (Protocol number: 22_002351) and is only available

following an approval process to safeguard the confidentiality of patient data. Details on how to apply for data access can be found at <https://cprd.com/data-access>.

Acknowledgements:

None.

Authors' Roles:

All authors were involved in the study conception and design, interpretation of the results, and the preparation of the manuscript. AD and WYM implemented data curation, data quality tests and assessment. All authors had access to the CPRD data. XC carried out data analysis for the manuscript. DPA and LMP reviewed the clinical code lists for this study. XC and DN wrote the initial draft of the manuscript, and all authors critically reviewed the final manuscript and gave consent for publication.

References:

1. Keener A, Bordelon Y. Parkinsonism. *Semin Neurol*. 2016;36:330–4.
2. Loscalzo J, Fauci A, Kasper D, Hauser S, Longo D, Jameson JL. *Harrison's principles of internal medicine*. 21st ed. McGraw Hill; 2022.
3. Weir S, Samnaliev M, Kuo T-C, Tierney TS, Walleser Autiero S, Taylor RS, et al. Short- and long-term cost and utilization of health care resources in Parkinson's disease in the UK. *Mov Disord*. 2018;33:974–81.
4. Gupta D, Kuruvilla A. Vascular parkinsonism: what makes it different? *Postgrad Med J*. 2011;87:829–36.
5. Shin H-W, Chung SJ. Drug-Induced Parkinsonism. *Journal of Clinical Neurology*. 2012;8:15.
6. Shiraiwa N, Tamaoka A, Ohkoshi N. Clinical features of drug-induced Parkinsonism. *Neurol Int*. 2018;10.
7. Ou Z, Pan J, Tang S, Duan D, Yu D, Nong H, et al. Global Trends in the Incidence, Prevalence, and Years Lived With Disability of Parkinson's Disease in 204 Countries/Territories From 1990 to 2019. *Front Public Health*. 2021;9.
8. Brakedal B, Toker L, Haugarvoll K, Tzoulis C. A nationwide study of the incidence, prevalence and mortality of Parkinson's disease in the Norwegian population. *NPJ Parkinsons Dis*. 2022;8:19.
9. Park J-H, Kim D-H, Kwon D-Y, Choi M, Kim S, Jung J-H, et al. Trends in the incidence and prevalence of Parkinson's disease in Korea: a nationwide, population-based study. *BMC Geriatr*. 2019;19:320.
10. Okunoye O, Marston L, Walters K, Schrag A. Change in the incidence of Parkinson's disease in a large UK primary care database. *NPJ Parkinsons Dis*. 2022;8:23.
11. Benito-León J, Bermejo-Pareja F, Rodríguez J, Molina J, Gabriel R, Morales J. Prevalence of PD and other types of parkinsonism in three elderly populations of central Spain. *Movement Disorders*. 2003;18:267–74.
12. Barbosa MT, Caramelli P, Maia DP, Cunningham MCQ, Guerra HL, Lima-Costa MF, et al. Parkinsonism and Parkinson's disease in the elderly: A community-based survey in Brazil (the Bambuí study). *Movement Disorders*. 2006;21:800–8.

13. Herrett E, Gallagher AM, Bhaskaran K, Forbes H, Mathur R, van Staa T, et al. Data Resource Profile: Clinical Practice Research Datalink (CPRD). *Int J Epidemiol*. 2015;44:827–36.
14. Voss EA, Makadia R, Matcho A, Ma Q, Knoll C, Schuemie M, et al. Feasibility and utility of applications of the common data model to multiple, disparate observational health databases. *Journal of the American Medical Informatics Association*. 2015;22:553–64.
15. Burn E. CodelistGenerator: Identify Relevant Clinical Codes and Evaluate Their Use [Internet]. Available from: <https://darwin-eu.github.io/CodelistGenerator/>
16. Gilbert J, Rao G, Schuemie M, Ryan P, Weaver J. CohortDiagnostics: Diagnostics for OHDSI Cohorts [Internet]. 2023. Available from: <https://ohdsi.github.io/CohortDiagnostics>
17. Catala M, Guo Y, Du M, Lopez-Guell K, Burn E, Mercade-Besora N. PatientProfiles: Identify Characteristics of Patients in the OMOP Common Data Model [Internet]. 2024. Available from: <https://CRAN.R-project.org/package=PatientProfiles>
18. Revision of the European Standard Population - Report of Eurostat's task force - 2013 edition - Products Manuals and Guidelines - Eurostat [Internet]. [cited 2024 Sep 4]. Available from: <https://ec.europa.eu/eurostat/web/products-manuals-and-guidelines/-/ks-ra-13-028>
19. Raventós B, Català M, Du M, Guo Y, Black A, Inberg G, et al. IncidencePrevalence: An R package to calculate population-level incidence rates and prevalence using the OMOP common data model. *Pharmacoepidemiol Drug Saf*. 2024;33.
20. de Lau LML, Giesbergen PCLM, de Rijk MC, Hofman A, Koudstaal PJ, Breteler MMB. Incidence of parkinsonism and Parkinson disease in a general population. *Neurology*. 2004;63:1240–4.
21. de Gernay S, Montastruc F, Carvajal A, Lapeyre-Mestre M, Montastruc J-L. Drug-induced parkinsonism: Revisiting the epidemiology using the WHO pharmacovigilance database. *Parkinsonism Relat Disord*. 2020;70:55–9.
22. Moisan F, Kab S, Mohamed F, Canonico M, Le Guern M, Quintin C, et al. Parkinson disease male-to-female ratios increase with age: French nationwide study and meta-analysis. *J Neurol Neurosurg Psychiatry*. 2016;87:952–7.
23. Wooten GF. Are men at greater risk for Parkinson's disease than women? *J Neurol Neurosurg Psychiatry*. 2004;75:637–9.
24. Cerri S, Mus L, Blandini F. Parkinson's Disease in Women and Men: What's the Difference? *J Parkinsons Dis*. 2019;9:501–15.
25. Caslake R, Taylor K, Scott N, Harris C, Gordon J, Wilde K, et al. Age-, and gender-specific incidence of vascular parkinsonism, progressive supranuclear palsy, and parkinsonian-type multiple system atrophy in North East Scotland: The PINE study. *Parkinsonism Relat Disord*. 2014;20:834–9.
26. Bondon-Guitton E, Perez-Lloret S, Bagheri H, Brefel C, Rascol O, Montastruc J. Drug-induced parkinsonism: A review of 17 years' experience in a regional pharmacovigilance center in France. *Movement Disorders*. 2011;26:2226–31.
27. Thanvi B. Vascular parkinsonism--an important cause of parkinsonism in older people. *Age Ageing*. 2005;34:114–9.
28. Korczyn AD. Vascular parkinsonism—characteristics, pathogenesis and treatment. *Nat Rev Neurol*. 2015;11:319–26.

29. Akyea RK, Vinogradova Y, Qureshi N, Patel RS, Kontopantelis E, Ntaios G, et al. Sex, Age, and Socioeconomic Differences in Nonfatal Stroke Incidence and Subsequent Major Adverse Outcomes. *Stroke*. 2021;52:396–405.
30. Savica R, Grossardt BR, Bower JH, Ahlskog JE, Rocca WA. Time Trends in the Incidence of Parkinson Disease. *JAMA Neurol*. 2016;73:981.
31. Savica R, Grossardt BR, Bower JH, Ahlskog JE, Mielke MM, Rocca WA. Incidence and time trends of drug-induced parkinsonism: A 30-year population-based study. *Movement Disorders*. 2017;32:227–34.
32. Marston L, Nazareth I, Petersen I, Walters K, Osborn DPJ. Prescribing of antipsychotics in UK primary care: a cohort study. *BMJ Open*. 2014;4:e006135.
33. Varimo E, Saastamoinen LK, Rättö H, Mogk H, Aronen ET. New Users of Antipsychotics Among Children and Adolescents in 2008–2017: A Nationwide Register Study. *Front Psychiatry*. 2020;11.
34. Radojčić MR, Pierce M, Hope H, Senior M, Taxiarchi VP, Trefan L, et al. Trends in antipsychotic prescribing to children and adolescents in England: cohort study using 2000–19 primary care data. *Lancet Psychiatry*. 2023;10:119–28.
35. Nakai M, Iwanaga Y, Sumita Y, Wada S, Hiramatsu H, Iihara K, et al. Associations among cardiovascular and cerebrovascular diseases: Analysis of the nationwide claims-based JROAD-DPC dataset. *PLoS One*. 2022;17:e0264390.
36. Iadecola C, Davisson RL. Hypertension and Cerebrovascular Dysfunction. *Cell Metab*. 2008;7:476–84.
37. Morgan A, Sinnott S-J, Smeeth L, Minassian C, Quint J. Concordance in the recording of stroke across UK primary and secondary care datasets: a population-based cohort study. *BJGP Open*. 2021;5.
38. Brain J, Greene L, Tang EYH, Louise J, Salter A, Beach S, et al. Cardiovascular disease, associated risk factors, and risk of dementia: An umbrella review of meta-analyses. *Frontiers in Epidemiology*. 2023;3.
39. Miglinas M, Cesniene U, Janusaite MM, Vinikovas A. Cerebrovascular Disease and Cognition in Chronic Kidney Disease Patients. *Front Cardiovasc Med*. 2020;7.
40. Horsfall L, Petersen I, Walters K, Schrag A. Time trends in incidence of Parkinson’s disease diagnosis in UK primary care. *J Neurol*. 2013;260:1351–7.
41. The Incidence and Prevalence of Parkinson’s in the UK. 2017 Dec.
42. Zhu J, Cui Y, Zhang J, Yan R, Su D, Zhao D, et al. Temporal trends in the prevalence of Parkinson’s disease from 1980 to 2023: a systematic review and meta-analysis. *Lancet Healthy Longev*. 2024;5:e464–79.
43. Ben-Shlomo Y, Darweesh S, Llibre-Guerra J, Marras C, San Luciano M, Tanner C. The epidemiology of Parkinson’s disease. *The Lancet*. 2024;403:283–92.
44. Pringsheim T, Jette N, Frolkis A, Steeves TDL. The prevalence of Parkinson’s disease: A systematic review and meta-analysis. *Movement Disorders*. 2014;29:1583–90.
45. Pankratz N, Nichols WC, Uniacke SK, Halter C, Rudolph A, Shults C, et al. Genome Screen to Identify Susceptibility Genes for Parkinson Disease in a Sample without parkin Mutations. *The American Journal of Human Genetics*. 2002;71:124–35.
46. Biegon A. Considering Biological Sex in Traumatic Brain Injury. *Front Neurol*. 2021;12.

47. Vlaar T, Kab S, Schwaab Y, Fréry N, Elbaz A, Moisan F. Association of Parkinson's disease with industry sectors: a French nationwide incidence study. *Eur J Epidemiol*. 2018;33:1101–11.
48. Li S, Han L, Shi H, Chong MKC, Zhao S, Ran J. Excess deaths from Alzheimer's disease and Parkinson's disease during the COVID-19 pandemic in the USA. *Age Ageing*. 2022;51.
49. Vale TC, Barbosa MT, Caramelli P, Cardoso F. Vascular Parkinsonism and cognitive impairment: literature review, Brazilian studies and case vignettes. *Dement Neuropsychol*. 2012;6:137–44.
50. Demirkiran M, Bozdemir H, Sarica Y. Vascular parkinsonism: a distinct, heterogeneous clinical entity. *Acta Neurol Scand*. 2001;104:63–7.
51. Zijlmans JCM, Daniel SE, Hughes AJ, Révész T, Lees AJ. Clinicopathological investigation of vascular parkinsonism, including clinical criteria for diagnosis. *Movement Disorders*. 2004;19:630–40.
52. Peters SAE, Carcel C, Millett ERC, Woodward M. Sex differences in the association between major risk factors and the risk of stroke in the UK Biobank cohort study. *Neurology*. 2020;95:e2715–26.
53. Phan HT, Blizzard CL, Reeves MJ, Thrift AG, Cadilhac D, Sturm J, et al. Sex Differences in Long-Term Mortality After Stroke in the INSTRUCT (INternational STROKE oUtcomes sTudy): A Meta-Analysis of Individual Participant Data. *Circ Cardiovasc Qual Outcomes*. 2017;10.
54. Zhang Y, Chapman A-M, Plested M, Jackson D, Purroy F. The Incidence, Prevalence, and Mortality of Stroke in France, Germany, Italy, Spain, the UK, and the US: A Literature Review. *Stroke Res Treat*. 2012;2012:1–11.
55. Han S, Kim S, Kim H, Shin H-W, Na K-S, Suh HS. Prevalence and incidence of Parkinson's disease and drug-induced parkinsonism in Korea. *BMC Public Health*. 2019;19:1328.
56. Soldin OP, Mattison DR. Sex Differences in Pharmacokinetics and Pharmacodynamics. *Clin Pharmacokinet*. 2009;48:143–57.
57. Soldin OP, Chung SH, Mattison DR. Sex Differences in Drug Disposition. *Biomed Res Int*. 2011;2011.
58. Wise J. One in 10 women in England takes antidepressants, survey shows. *BMJ*. 2014;349:g7641–g7641.
59. Vivacqua MN, Abudarham T, Pagotto V, Faccioli JL. [Antipsychotic prescription prevalence and metabolic monitoring of patients under chronic treatment]. *Rev Fac Cien Med Univ Nac Cordoba*. 2021;78:276–82.
60. Hughes AJ, Daniel SE, Ben-Shlomo Y, Lees AJ. The accuracy of diagnosis of parkinsonian syndromes in a specialist movement disorder service. *Brain*. 2002;125:861–70.