

1 **Manuscript Title – Population-level Impact of HPV Vaccination On the Incidence of**  
2 **Genital Warts in Sweden**

3 **Authors:** Ana Martina Astorga Alsina\*<sup>1</sup>, Eva Herweijer<sup>2</sup>, Jiayao Lei\*<sup>1,3</sup>

4 **Affiliations:**

5 <sup>1</sup> Department of Medical Epidemiology and Biostatistics, Karolinska Institutet, Nobels väg  
6 12A, SE-17177 Stockholm, Sweden

7 <sup>2</sup> Institute of Environmental Medicine, Karolinska Institutet, Stockholm, Sweden

8 <sup>3</sup> Department of Clinical Science, Intervention and Technology, Karolinska Institutet, Alfred  
9 Nobels Allé 8, SE-141 52 Stockholm, Sweden

10 **Abstract**

11 **Background:** Sweden introduced HPV vaccination in 2006, administered through  
12 opportunistic, subsidized, catch-up and school-based programs. Notably, genital warts (GW)  
13 are the first observable clinical outcome following infection by HPV-6/11, targeted by  
14 vaccination. We aim to gain knowledge of the population incidence of GW in Sweden and  
15 evaluate its change throughout vaccination programs.

16 **Methods:** This ecological study used Swedish registers to obtain national population data and  
17 cases of genital warts from 2006-2018 in men and women aged 15-44. We used Poisson  
18 models to evaluate GW incidence change after vaccination in reference to a pre-vaccination  
19 period, stratified by age and sex. As well as, to estimate incidence change of GW in birth  
20 cohorts eligible for different vaccination programs compared to a pre-vaccination cohort.  
21 Finally, we estimated GW cases averted in each vaccinated cohort.

22 **Results:** The incidence of GW decreased during periods following HPV vaccination. In  
23 2016-2018, over a decade after vaccination availability, incidence decreased by 89% (95% CI  
24 83-93), 73% (95% CI 71-75), 50% (95% CI 43-56) and 20% (95% CI 10-28) in women aged  
25 15-19, 20-24, 25-29 and 30-34, respectively. A similar reduction was observable in men,  
26 although of lesser magnitude. We estimated 18,890 and 12,343 GW cases averted among  
27 vaccinated cohorts of women and men, respectively.

28 **Conclusions:** We report on population-level decreases of GW incidence in women and men  
29 following increased vaccination coverage. Cohorts eligible for school-based vaccination  
30 recorded the largest decrease in GW incidence in Sweden to date. For the period under study,  
31 decreases among men could be attributed to herd effects.

**NOTE:** This preprint reports new research that has not been certified by peer review and should not be used to guide clinical practice.

## 32 Introduction

33 In 2020, the World Health Organisation (WHO) proposed a global strategy to eliminate  
34 cervical cancer as a public health issue, aiming to achieve 90% vaccination coverage against  
35 human papillomavirus (HPV) in girls by age 15 [1]. In Sweden, immunisation against HPV  
36 was first offered in October 2006, with almost exclusive administration of the quadrivalent  
37 vaccine (i.e. covering HPV-6/11/16/18) until 2019 [2-4]. Initially, vaccination was  
38 opportunistic and required an out-of-pocket fee but was subsidised from May 2007  
39 (supplementary Figure S1 & Table S1) [2]. National coverage remained low until vaccination  
40 delivery changed to a structured school-based program in 2012, accompanied with a catch-up  
41 program, and no out-of-pocket fee [3-4]. Since then, coverage of at least one dose increased to  
42 80% and 60% for the school-based program cohorts and catch-up program cohorts, respectively  
43 [6]. Later, in 2016, another catch-up opportunity came within the school-based program for  
44 those under 18 [4]. Males were mostly excluded from national vaccination programs until the  
45 extension of school-based vaccination in autumn 2020 [5].

46 Monitoring the impact of changing HPV vaccination coverage on cervical cancer  
47 incidence can be challenging due to the prolonged latency period. Clinical outcomes of HPV  
48 that precede cancer, such as cervical lesions or genital warts (GW), are thus useful to monitor  
49 potential impact at an earlier stage. 90% of GW cases are associated with HPV-6/11, covered  
50 by quadrivalent and nonavalent vaccines [7]. They may develop as early as 2-3 months from  
51 the point of infection and are widely reported by healthcare registers in Sweden [7]. As a result,  
52 they serve as the first observable disease measure to assess early effectiveness of HPV vaccines  
53 [8,9].

54 Several countries have reported reductions of GW incidence following HPV  
55 vaccination program implementation [10–13]. However, in Sweden, GW are not included in  
56 the mandatory surveillance of infectious diseases, and incidence has only been reported up until  
57 2012 [3,6,14,15]. Thus, to date, the school-based vaccination program change has not been  
58 evaluated for its population impact on GW.

59 We aim to examine the incidence trend of GW from 2006 to 2018 among 15-44 year  
60 old men and women in Sweden, in relation to subsequent national HPV vaccination programs.  
61 The inclusion of men allows for exploration of possible protection via herd-effect since their  
62 coverage during the study period is virtually zero. We also estimate cases of GW averted among  
63 birth cohorts eligible for Sweden's sequential HPV vaccination programs.

64

## 65 **Methods**

### 66 **Study Population & Data Collection**

67 Our study followed an ecological time-trend design, where GW time-varying disease  
68 rates were retrospectively compared in a population geographically limited to Sweden. The  
69 study's target population consists of men and women aged 15 to 44, registered in Sweden  
70 between 2006 to 2018.

71 We collected aggregated Swedish population data from the Total Population Register  
72 (TPR), maintained and reported by Statistics Sweden. The TPR holds registration of all  
73 individuals permanently residing in Sweden since 1968 [16]. We also obtained counts of GW  
74 cases through healthcare register data from the National Patient Register (NPR) using the ICD-  
75 10 code denoting an anogenital wart diagnosis (A63.0) [17], and from the Prescribed Drug  
76 Register (PDR) using ATC codes for podophyllotoxin (D06BB04) and imiquimod (D06BB10)  
77 [18]. Non-pharmacological treatments used in persistent cases after first-line pharmacological  
78 treatment were excluded.

### 79 **Vaccination Coverage**

80 We defined exposure categorically based on HPV vaccination coverage at the  
81 population-level, in relation to Sweden's sequential vaccination programs. Periods of pre- and  
82 post-vaccination were defined via coverage reported by the Public Health Agency of Sweden,  
83 which refers to all those who have received at least one dose of a HPV vaccine [5]. We defined  
84 the pre-vaccination period as 2006-2007 because vaccination was introduced late in 2006 and  
85 coverage remained close to zero during this period (supplementary Figure S1). The post-  
86 vaccination periods include 2008-2011, 2012-2015 and 2016-2018, which registered  
87 sequentially increased coverage (i.e. specific to each birth cohort), of up to 34%, 55% and 84%,  
88 respectively [5].

89 Subsequently, these categorical classifications were made based on birth cohort  
90 eligibility for each national program (supplementary Table S1 and Figure S2). Pre-vaccination  
91 birth cohorts include 1961-1985, who were not targeted by any national vaccination programs,  
92 and 1986-1988, who may have been vaccinated opportunistically but without subsidy (i.e.  
93 coverage does not exceed 10%) [5]. Meanwhile, post-vaccination birth cohorts include 1989-  
94 1992, who were part of the subsidised vaccination program, 1993-1998, who were eligible for

95 the subsidised vaccination program and the 2012 catch-up program, as well as 1999-2003, who  
96 participated in the school-based vaccination program.

### 97 **Genital Wart Cases**

98 Cases of GW are considered a sufficiently specific outcome that allows measurement  
99 of vaccination effects as 90% of cases are ascribed to HPV-6/11, which are targeted by the  
100 quadrivalent vaccine in use during the study period [7, 19]. We included both first-occurring  
101 and subsequent cases of GW from any single individual, since no differentiation was made  
102 between these. A new case was included in the absence of any GW-related clinical or  
103 pharmaceutical registers in the 6 months prior. We pooled counts of GW cases, aggregated by  
104 sex, age-at-diagnosis, period of diagnosis and birth cohort.

### 105 **Statistical Analyses**

106 We report descriptive plots, a period analysis and a cohort analysis performed using  
107 Stata (version 18). We first merged population and case data (see supplementary Section  
108 S1:Methods) [20]. Then, our descriptive analyses involved crude estimates for incidence rate  
109 (IR) of GW, derived from the number of GW cases divided by the corresponding person-years  
110 at risk. We plotted age-specific incidence by various calendar periods, and period-specific  
111 incidence by age groups [21]. These were illustrated for women and men respectively. In the  
112 period analysis that followed, we estimated incidence rate ratios (IRR) and 95% confidence  
113 intervals (CI) for post-vaccination periods using the pre-vaccination period (i.e. 2006-2007) as  
114 reference. To do so, we employed Poisson regression models with a categorical period variable  
115 as the predictor and robust standard errors, stratifying by each age and sex category.

116 After this, we conducted a cohort analysis to estimate IRR with 95% CIs for each birth  
117 cohort group eligible for subsequent vaccination programs using the youngest pre-vaccination  
118 cohort, 1986-1988, as reference. We used a Poisson regression model with robust standard  
119 errors, and a categorical cohort variable as predictor. As covariates, we included age and period  
120 as restricted cubic splines with 6 knots and 3 knots, respectively. We then estimated the amount  
121 of GW cases averted with 95% CIs for each post-vaccination birth cohort group. This was done  
122 by first estimating the number of GW cases in each vaccinated cohort using each cohort's  
123 different estimated effects and size. Then, we compared this with the corresponding expected  
124 number of GW cases when the cohort effect was forced to be the same as in the referent pre-  
125 vaccination cohort using the margin command in Stata [22]. The difference between estimated

126 and expected GW cases was considered as the number of GW cases averted through HPV  
127 vaccination.

128 Finally, we performed sensitivity analyses to evaluate robustness in our estimates. In  
129 the period analysis, we explored the sensitivity of our estimates to an adjustment for seasonal  
130 effects. This involved running the same model for each age and sex category with the inclusion  
131 of a categorical season variable as a covariate. In the cohort analysis, a negative binomial model  
132 was included to compare model sensitivity using the same predictors and covariates as the main  
133 model. Using this model, we again estimated IRR and subsequently, the number of cases  
134 averted.

135

## 136 **Results**

137 Our study included a total of 184,006 incident cases of GWs among 15-44 year old  
138 Swedish residents from 2006 to 2018, including 80,296 cases detected in women and 103,710  
139 in men (Table 1). The study population accumulated a total of 23.64 million person-years from  
140 women and 24.83 million from men throughout the study period.

141 In the descriptive figures, we noticed a difference in age trends of GW incidence  
142 between women and men where the maximum IR among women in 2006-2007 is seen at age  
143 21 (1178 cases per 100,000 person-years), while among men at 23 (1167 cases per 100,000)  
144 (Figure 1). Besides this, however, crude curves for GW cases by age-at-diagnosis appeared  
145 mostly similar among women and men, with 71% of cases occurring before 30 among women  
146 and 66% among men (Table 1).

147 Then, when inspecting crude IR over calendar time visually, we observed a declining  
148 pattern of varying magnitude among those aged 15-19, 20-24 and 25-29 (Figure 2). This was  
149 also reflected in the flattening of the age curve across period strata (Figure 1). Among women,  
150 the decline appeared to begin from 2007/2008 while in men it appeared later around 2010  
151 (Figure 2).

152 Similarly, through the Poisson model of the period analysis, we estimated the largest  
153 and earliest decreases in IR of GW among women aged below 30. This was for each  
154 consecutive period in reference to the pre-vaccination period (i.e. 2006-2007) (Figure 3,  
155 supplementary Table S2). Among this group, we could clearly observe a pattern of increased  
156 IR reductions in later time periods. Among 15-19 year olds, for example, IRR estimates showed

157 decreases of 10% (95% CI (-22)-33), 64% (95% CI 50-75) and 89% (95% CI 83-93) for 2008-  
158 2011, 2012-2015 and 2016-2018, respectively. Besides this, we could also observe a pattern of  
159 decreased reductions with increased age. This difference is observed in the comparably smaller  
160 estimates among 20-24 year olds of 12% (95% CI 5-19), 49% (95% CI 44-54) and 73% (95%  
161 CI 71-75) for 2008-2011, 2012-2015 and 2016-2018, respectively. Meanwhile among 25-29  
162 year olds we estimated this decrease at 12% (95% CI 0-23), 31% (95% CI 21-40) and 50%  
163 (95% CI 43-56) for the same time periods, respectively.

164 Among women aged above 30, on the other hand, we observed stable IR over time  
165 compared to the reference pre-vaccination period (Figure 3, supplementary Table S2). Unlike  
166 women aged below 30, we generally didn't observe a consistent pattern of increasing IR  
167 reductions for later time periods in this age group. This could only be observed in women aged  
168 30-34, whose estimates in 2012-2015 begin to show a decrease in IR of 10% (95% CI 0-19),  
169 and later 20% (95% CI 10-28) in 2016-2018. Estimates of women aged 40-44 in 2016-2018  
170 showed the largest increases in GW IR at any period of 25% (95% CI 13-38).

171 When it comes to men, we observed comparable patterns to those among women,  
172 including increased reductions of IR over time and at younger ages. Although, estimates of IR  
173 decreases were lower than their female counterparts in those under 30, with the largest  
174 estimated decreases among those aged 15-19 in 2012-2015 and 2016-2018 being 40% (95%  
175 CI 1-64) and 79% (95% CI 64-88), respectively (Figure 3, supplementary Table S2).  
176 Meanwhile estimates of IR increase among men over 30 were higher compared to women,  
177 reaching 55% (95% CI 36-78) among 40-44 year olds in 2016-2018. We also generally  
178 observed wider CIs among men compared to women.

## 179 **Comparison Of Birth Cohorts**

180 Cohort analyses showed significant changes in incidence of GW in post-vaccination  
181 birth cohorts compared to the reference birth cohort, 1986-1988 (Table 2). With the Poisson  
182 model, we estimated a decrease in incidence of 23% (95% CI 18-27), 62% (95% CI 58-65) and  
183 93% (95% CI 90-95) in birth cohorts of women eligible for subsidised, catch-up and school-  
184 based vaccination, respectively. Meanwhile, in male birth cohorts that corresponded to cohorts  
185 of women eligible for vaccination, we saw similar decreases in risk, of 19% (95% CI 15-22),  
186 56% (95% CI 52-59) and 85% (95% CI 81-88), respectively.

187 Using IR of the reference cohort as a counterfactual scenario allowed us to estimate  
188 cases of GW averted in each birth cohort. This way, we estimated 31,233 cases of GW averted  
189 in cohorts that were eligible for any structured national HPV vaccination program, compared  
190 to what would have been expected if the cohort effect had been the same as the reference pre-  
191 vaccination cohort's. This included 18,890 cases among women and 12,343 cases among men  
192 (Table 2). The largest number of cases averted were in cohorts 1993-1998 followed by 1989-  
193 1992 and then 1999-2003. This is true in both sexes while the estimated number of cases  
194 averted is lower in men, and this difference is larger in younger cohorts.

### 195 **Sensitivity Analysis**

196 Sensitivity analyses showed robustness of our estimates to modified assumptions. In  
197 the period analysis, our estimates were comparable after adjustment for seasonality  
198 (supplementary Table S3): changes in the magnitude of associations were negligible, with those  
199 among men aged 15-19 being the largest, while CIs were comparable. In the cohort analysis,  
200 model-sensitivity analysis showed robustness to specification error, with the results produced  
201 by the negative binomial model being very similar to the main analysis: IRRs estimated from  
202 the negative binomial model were generally slightly larger, and consequently led to larger  
203 estimates of cases averted (supplementary Table S4), while CIs were comparable.

204

### 205 **Discussion**

206 We demonstrate a decreased incidence of GW after the introduction of HPV  
207 vaccination, with a larger decrease over time as vaccination coverage increased. This trend is  
208 clearly observed in women below the age of 30, who were eligible for a structured vaccination  
209 program. This age group also displays a clear trend of reduced decreases in IR with older age,  
210 correlating with a decrease in coverage with increased age. In contrast, the estimated IR for  
211 women aged over 30 (i.e. born before 1989) generally remained approximately stable. This  
212 population would generally not have had access to subsidised vaccination, and coverage would  
213 be vulnerable to disparities influencing opportunistic access. An exception is observed among  
214 those aged 30-34 who have a decreased IR after 2012, likely due to some coverage from the  
215 opportunistic vaccination period prior to subsidisation

216 While IR trends over the study period observed in men resembled those observed in  
217 women, some differences allude to their differential protection. IRR estimates among men were  
218 generally more positive, indicating lesser magnitude decreases and higher magnitude increases  
219 in incidence. This alludes to a lower protective effect among men, in-line with their general  
220 lack of direct protection against HPV. Among those under 30, estimates showed no significant  
221 trends until 2012-2015. This indicates a lag in effect in this population compared to women.  
222 Men were only included in a national HPV vaccination program in Sweden from autumn 2020.  
223 Thus, if these trends were attributed to protection via a vaccination program, it could only be  
224 indirect protection via herd effect.

225 Additionally, we report the lowest estimated IRR in birth cohort group 1999-2003.  
226 Despite this, most cases averted corresponded to birth cohort, 1993-1998, who were likely  
227 protected via a mix of the opportunistic and catch-up program (supplementary Table S1). In  
228 this group, vaccination coverage is relatively high, and they are included in the study  
229 throughout peak infection ages, thereby accounting for many cases averted. While coverage is  
230 also high for cohorts 1999-2003, the study period only included them before the age of  
231 maximum incidence of GW (supplementary Figure S3). Similarly, even though coverage is  
232 lower in cohorts born 1989-1992, their inclusion in the study during a wide age range of high  
233 incidence of GW resulted in many averted cases estimated.

234 Overall, our results indicated that GW incidence sees a higher decrease over time and  
235 lower decrease with increased age during the study period. This could be attributed to higher  
236 coverage and inclusion of younger cohorts, who may have also been vaccinated at an earlier  
237 age. We also indicate a possible increased herd effect in men over time. These observations are  
238 reliant on GW diagnostics remaining constant during the study period, and do not consider  
239 differences in protection from differential vaccine doses. While it is difficult to definitively  
240 differentiate between the effect of distinct vaccination programs, the introduction of  
241 subsidisation and structured delivery in school-settings likely facilitated convenience for  
242 vaccination uptake and resulted in the observable increase in vaccination coverage;  
243 consequently, a comparable potential impact on incidence of GW seems plausible.

244 Our results corroborate with existing reports of GW trends in earlier time periods  
245 following HPV vaccination in the Swedish population. This includes a decrease in IR of GW  
246 among women aged 15-24 from 2008, and among men from 2010-2012 [6]. However, while  
247 previous studies state no change in GW IR for women above 30 years of age, we report



248 decreases in women aged 30-34 from 2012 onwards and in men from 2016 [6]. This finding is  
249 ascribed to our study's prolonged follow-up since vaccine introduction.

250 Furthermore, our results align with literature from other countries concerning impact of  
251 vaccination programs on incidence of GW. Comparable estimates from a Danish population  
252 registry study of GW incidence 5 years after vaccine implementation found decreases of 55%  
253 among women aged 12-35, and 37% among men aged 12-29 [10]. Similarly, an Australian  
254 serial cross-sectional study estimated a 68% reduction in GW diagnoses among women aged  
255 above 15 and a 49% reduction among men of the same age during the initial girls-only  
256 vaccination period [12]. Much like our estimates, they report smaller decreases of GW  
257 incidence with increasing age. A Canadian study evaluating the first cohorts eligible for school-  
258 based vaccination estimated a GW incidence decline of 72% in women 16-18 years of age and  
259 51% in men of the same age [11]. Meanwhile, summary estimates from a meta-analysis  
260 indicated faster and more significant decreases of GW in women aged 15-24 in high coverage  
261 contexts (>50%), reinforcing the relationship between GW IR change and the coverage  
262 achieved by vaccination programs [13]. Among women aged 25-29 and men aged 15-24, their  
263 estimates were only significant in high coverage settings where indirect protection may have  
264 had an increased effect. This aligns with our estimates. Meanwhile, among men aged 25-29,  
265 the meta-analysis estimated significant effects in high coverage contexts over 5 years post-  
266 vaccination like our estimates for the same group, 6 years post-vaccination [13].

267 There are some limitations in our study. Firstly, GW cases were obtained only for men  
268 who are first-degree relatives of the female population, resulting in an underestimation of the  
269 true IR when using the person-time of the total population. However, given that our study  
270 covers an estimated 96% of the male population in Sweden, we expect this bias to be small.  
271 We also cannot account for any HPV vaccinations received before immigrating to Sweden,  
272 which may result in an underestimation of coverage. Depending on the overall background risk  
273 of GW among immigrants, this could contribute to an over- or underestimation of the impact  
274 on GW. Furthermore, some GW cases may be erroneously classified as such through the  
275 prescription of podophyllotoxin and imiquimod for other conditions. The most common of  
276 these conditions, namely superficial basal cell carcinoma and actinic keratoses, are mostly  
277 associated with ages 40 or above [23], minimising bias within the age range of interest.  
278 Molluscum contagiosum, however, is often found in young, sexually active adults and could  
279 lead to an overestimate of GW incidence in our population [24, 25]. This could introduce bias  
280 if cases of molluscum contagiosum were differential over the study period. Similarly, lack of

281 health-seeking for GW could lead to an underestimation of cases, although this is not expected  
282 to be differential over time. Finally, regression of GW cases before identification by either NPR  
283 or PDR could contribute to an underestimation of cases. However, GW may often recur and  
284 presumably be identified in the national healthcare registers eventually [7].

285 Furthermore, the ecological time-trend design is prone to ecological fallacy and  
286 confounding from time-varying factors. Crucially, our interpretations on impact of vaccination  
287 programs are limited to the group-level rather than on any individual. Meanwhile, confounding  
288 factors including changing sexual or healthcare-seeking behavior, may also relate to  
289 components of the vaccination program that are not vaccination itself, such as increased public  
290 campaigns or education of school-personnel. This confounding effect can be partially explored  
291 by comparing other STI trends as negative controls.

292 Nonetheless, we benefit from a series of important strengths. GW cases from the  
293 nationwide registers were obtained with near complete coverage of men and women registered  
294 in Sweden between 2006-2018. These registers constitute valid and reliable sources for the  
295 outcome selected that allow for high statistical power and minimised risk of selection bias.  
296 Meanwhile the ecological design allowed for estimates on the total impact of the HPV  
297 vaccination program, including both direct and indirect protective effects of the HPV vaccine.  
298 This allowed us to report on highly relevant measures at the population level, with significant  
299 relevance to the surveillance of vaccination program performance.

300 Our study provides national-level estimates of the incidence of GW in Sweden 12  
301 years after introduction of HPV vaccination, highlighting trends related to different  
302 vaccination delivery approaches. These findings should be generalisable to most settings with  
303 similarly structured vaccination programs, achieving comparable coverage rates. Our results  
304 fall in-line with recommendations from the WHO and the European Centre for Disease  
305 Prevention and Control, which advocate for the increased effectiveness of school-based HPV  
306 vaccination at younger ages. By demonstrating the differential population-level impact of  
307 various vaccination programs, our findings are crucial for informing policy- and decision-  
308 makers on optimizing national immunization programs. Continuous monitoring of the  
309 programs and evaluation of GW incidence trends are essential, possibly exploring the  
310 potential for eliminating GW through HPV vaccination.

311 In conclusion, we demonstrate significant decreases of GWs among women under 30  
312 and, more recently, a comparably smaller but sizeable decrease among men through possible

313 herd effect. Cohorts eligible for subsidised national HPV vaccination programs are associated  
314 with significantly lower incidence of GW, especially those vaccinated through the school-  
315 based program. Ultimately, underscoring the importance of structured and targeted  
316 vaccination strategies that minimise cost barriers and maximise convenience, to reduce HPV-  
317 related disease outcomes.

### 318 **Ethical considerations**

319 This study was approved by the regional ethical review board in Stockholm (Dnr. 02-556,  
320 2011/921-32, and 2023-06456-02), and concluded that informed consent from the study  
321 subjects was not required.

### 322 **Funding**

323 This work was supported by the Swedish Research Council (Vetenskapsrådet) (No. 2023-  
324 01809), the Swedish Research Council for Health, Working Life and Welfare (FORTE) (No.  
325 2023-01221), and Karolinska Institutet Strategic Research Area in Epidemiology and  
326 Biostatistics (JL). The funders have no role in considering the study or in the collection,  
327 analysis, interpretation of data, writing of the report, or decision to submit the article for  
328 publication.

### 329 **Acknowledgements**

330 We would like to acknowledge Prof. Pär Sparen for database establishment and valuable  
331 discussion, Pouran Almstedt for data management, as well as Alexander Ploner for consistent  
332 statistical support.

### 333 **Conflicts of Interest**

334 None to declare.

### 335 **Statement of Data Availability**

336 Data not publicly available.

337

338

339

340

341

## 342 References

343

- 344 1. World Health Organisation. Global strategy to accelerate the elimination of cervical  
345 cancer as a public health problem. Available at:  
346 <https://www.who.int/publications/i/item/9789240014107>. Accessed 1 July 2024.
- 347 2. Tegnell A, Dillner J, Andrae B. Introduction of human papillomavirus (HPV)  
348 vaccination in Sweden. Eurosurveillance. European Centre for Disease Prevention  
349 and Control; **2009**; 14(6):19119.
- 350 3. Leval A, Herweijer E, Ploner A, et al. Quadrivalent Human Papillomavirus Vaccine  
351 Effectiveness: A Swedish National Cohort Study. JNCI: Journal of the National  
352 Cancer Institute. Oxford Academic; **2013**; 105(7):469–474.
- 353 4. Lei J, Ploner A, Elfström KM, et al. HPV Vaccination and the Risk of Invasive  
354 Cervical Cancer. New England Journal of Medicine. Massachusetts Medical Society;  
355 2020; 383(14):1340–1348.
- 356 5. Folkhälsomyndigheten. Statistik om HPV-vaccinationer 2007–2017. Available at:  
357 [https://www.folkhalsomyndigheten.se/folkhalsorapportering-](https://www.folkhalsomyndigheten.se/folkhalsorapportering-statistik/statistikdatabaser-och-visualisering/vaccinationsstatistik/statistik-for-hpv-vaccinationer/)  
358 [statistik/statistikdatabaser-och-visualisering/vaccinationsstatistik/statistik-for-hpv-](https://www.folkhalsomyndigheten.se/folkhalsorapportering-statistik/statistikdatabaser-och-visualisering/vaccinationsstatistik/statistik-for-hpv-vaccinationer/)  
359 [vaccinationer/](https://www.folkhalsomyndigheten.se/folkhalsorapportering-statistik/statistikdatabaser-och-visualisering/vaccinationsstatistik/statistik-for-hpv-vaccinationer/). Accessed 6 January 2024.
- 360 6. Herweijer E, Ploner A, Sparén P. Substantially reduced incidence of genital warts in  
361 women and men six years after HPV vaccine availability in Sweden. Vaccine; 2018;  
362 36(15):1917–1920.
- 363 7. Garland SM, Steben M, Sings HL, et al. Natural History of Genital Warts: Analysis of  
364 the Placebo Arm of 2 Randomized Phase III Trials of a Quadrivalent Human  
365 Papillomavirus (Types 6, 11, 16, and 18) Vaccine. J Infect Dis. Oxford Academic;  
366 2009; 199(6):805–814.
- 367 8. World Health Organisation. Report of the meeting on HPV Vaccine Coverage and  
368 Impact Monitoring. Available at:  
369 [https://www.who.int/publications/i/item/WHO\\_IVB\\_10.05](https://www.who.int/publications/i/item/WHO_IVB_10.05). Accessed 7 March 2024.
- 370 9. Mariani L, Vici P, Suligoì B, Checcucci-Lisi G, Drury R. Early Direct and Indirect  
371 Impact of Quadrivalent HPV (4HPV) Vaccine on Genital Warts: a Systematic Review.  
372 Adv Ther. Springer Healthcare; **2015**; 32(1):10–30.
- 373 10. Bollerup S, Baldur-Felskov B, Blomberg M, Baandrup L, Dehlendorff C, Kjaer SK.  
374 Significant Reduction in the Incidence of Genital Warts in Young Men 5 Years into

- 375 the Danish Human Papillomavirus Vaccination Program for Girls and Women. *Sex*  
376 *Transm Dis*; 2016; 43(4):238–242.
- 377 11. Righolt CH, Willows K, Kliwer E V., Mahmud SM. Incidence of anogenital warts  
378 after the introduction of the quadrivalent HPV vaccine program in Manitoba, Canada.  
379 *PLoS One*. *PLOS*; **2022**; 17(4).
- 380 12. Chow EPF, Carter A, Vickers T, et al. Effect on genital warts in Australian female and  
381 heterosexual male individuals after introduction of the national human papillomavirus  
382 gender-neutral vaccination programme: an analysis of national sentinel surveillance  
383 data from 2004–18. *Lancet Infect Dis*. Elsevier; **2021**; 21(12):1747–1756.
- 384 13. Drolet M, Bénard É, Pérez N, et al. Population-level impact and herd effects  
385 following the introduction of human papillomavirus vaccination programmes: updated  
386 systematic review and meta-analysis. *The Lancet*. Elsevier; **2019**; 394(10197):497–  
387 509.
- 388 14. Leval A, Herweijer E, Arnheim-Dahlström L, et al. Incidence of Genital Warts in  
389 Sweden Before and After Quadrivalent Human Papillomavirus Vaccine Availability. *J*  
390 *Infect Dis*. Oxford Academic; **2012**; 206(6):860–866.
- 391 15. Folkhälsomyndigheten. Notifiable Diseases [Internet]. **2023**. Available from:  
392 [https://www.folkhalsomyndigheten.se/the-public-health-agency-of-](https://www.folkhalsomyndigheten.se/the-public-health-agency-of-sweden/communicable-disease-control/surveillance-of-communicable-diseases/notifiable-diseases/)  
393 [sweden/communicable-disease-control/surveillance-of-communicable-](https://www.folkhalsomyndigheten.se/the-public-health-agency-of-sweden/communicable-disease-control/surveillance-of-communicable-diseases/notifiable-diseases/)  
394 [diseases/notifiable-diseases/](https://www.folkhalsomyndigheten.se/the-public-health-agency-of-sweden/communicable-disease-control/surveillance-of-communicable-diseases/notifiable-diseases/). Accessed 11 July 2024.
- 395 16. Ludvigsson JF, Almqvist C, Bonamy AKE, et al. Registers of the Swedish total  
396 population and their use in medical research. *Eur J Epidemiol*; **2016**; 31(2):125–136.
- 397 17. Ludvigsson JF, Andersson E, Ekbom A, et al. External review and validation of the  
398 Swedish national inpatient register. *BMC Public Health*. BioMed Central; **2011**;  
399 11(450):1–16.
- 400 18. Wettermark B, Hammar N, Fored CM, et al. The new Swedish Prescribed Drug  
401 Register--opportunities for pharmacoepidemiological research and experience from  
402 the first six months. *Pharmacoepidemiol Drug Saf*; **2007**; 16(7):726–735.
- 403 19. Lipsitch M, Jha A, Simonsen L. Observational studies and the difficult quest for  
404 causality: lessons from vaccine effectiveness and impact studies. *Int J Epidemiol*.  
405 Oxford Academic; **2016**; 45(6):2060–2074.
- 406 20. Rutherford MJ, Lambert PC, Thmpson JR. Ge-period-ohort modeling. *The Stata*  
407 *Journal*. **2010**; 10(4):606-627.

- 408 21. Carstensen B. Age-period-cohort models for the Lexis diagram. *Stat Med.* **2007**;  
409 26(15):3018–3045.
- 410 22. Falcaro M, Newson RB, Sasieni P. Stata tip 146: Using margins after a Poisson  
411 regression model to estimate the number of events prevented by an intervention. *Stata*  
412 *Journal*. SAGE Publications Inc.; **2022**; 22(2):460–464.
- 413 23. Kappelin J, Green AC, Ingvar Å, Ahnlide I, Nielsen K. Incidence and trends of basal  
414 cell carcinoma in Sweden: a population-based registry study. *British Journal of*  
415 *Dermatology*. Oxford Academic; **2022**; 186(6):963–969.
- 416 24. Hebert AA, Bhatia N, Rosso JQ Del. Molluscum Contagiosum: Epidemiology,  
417 Considerations, Treatment Options, and Therapeutic Gaps. *J Clin Aesthet Dermatol.*  
418 *Matrix Medical Communications*; 2023; 16(8 Suppl 1):S4.
- 419 25. Edwards S, Boffa MJ, Janier M, et al. 2020 European guideline on the management of  
420 genital molluscum contagiosum. *J Eur Acad Dermatol Venereol*; **2021**; 35(1):17–26.

## Tables & Figures

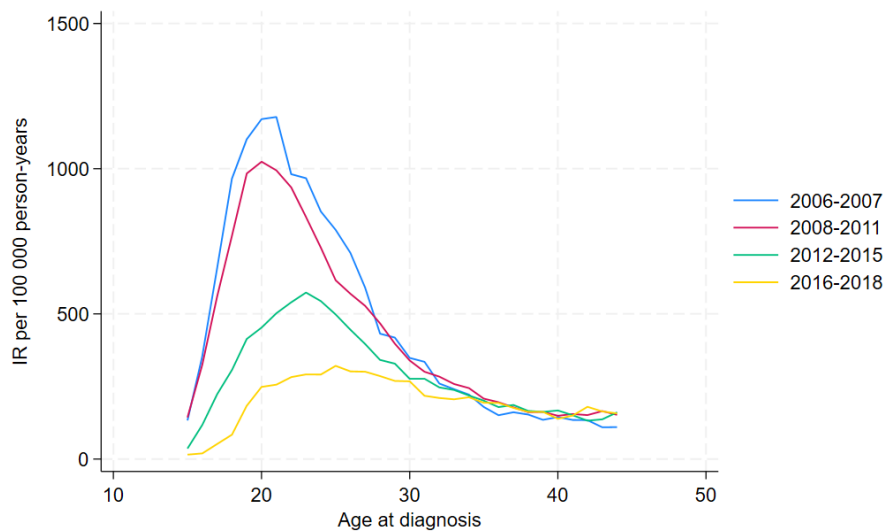
### Population-level Impact of HPV Vaccination On the Incidence of Genital Warts in Sweden

September 19, 2024

Table 1: Sex-specific genital warts cases and person-time per categories of age, period, and cohort

|                      | Men                        |       |                                 |       | Women                     |       |                                 |       |
|----------------------|----------------------------|-------|---------------------------------|-------|---------------------------|-------|---------------------------------|-------|
|                      | Genital Warts<br>n=103,710 |       | Person-Years<br>n=24.83 million |       | Genital Warts<br>n=80,296 |       | Person-Years<br>n=23.64 million |       |
|                      | Cases                      | %     | Millions                        | %     | Cases                     | %     | Millions                        | %     |
| <b>Age</b>           |                            |       |                                 |       |                           |       |                                 |       |
| 15-19                | 6,198                      | 5.98  | 3.9                             | 15.66 | 13,655                    | 17.01 | 3.6                             | 15.34 |
| 20-24                | 31,570                     | 30.44 | 4.2                             | 16.80 | 25,955                    | 32.32 | 3.9                             | 16.68 |
| 25-29                | 30,469                     | 29.38 | 4.2                             | 17.08 | 17,394                    | 21.66 | 4.0                             | 17.06 |
| 30-34                | 17,717                     | 17.08 | 4.1                             | 16.49 | 10,084                    | 12.56 | 3.9                             | 16.51 |
| 35-39                | 10,588                     | 10.21 | 4.1                             | 16.65 | 6,990                     | 8.71  | 4.0                             | 16.83 |
| 40-44                | 7,168                      | 6.91  | 4.3                             | 17.33 | 6,218                     | 7.74  | 4.2                             | 17.58 |
| <b>Calendar Year</b> |                            |       |                                 |       |                           |       |                                 |       |
| 2006-2007            | 16,993                     | 16.39 | 3.7                             | 14.97 | 16,165                    | 20.13 | 3.6                             | 15.05 |
| 2008-2011            | 37,862                     | 36.51 | 7.5                             | 30.39 | 31,319                    | 39.00 | 7.2                             | 30.55 |
| 2012-2015            | 31,121                     | 30.01 | 7.6                             | 30.71 | 21,334                    | 26.57 | 7.3                             | 30.75 |
| 2016-2018            | 17,734                     | 17.10 | 5.9                             | 23.93 | 11,478                    | 14.29 | 5.6                             | 23.65 |
| <b>Birth Cohort</b>  |                            |       |                                 |       |                           |       |                                 |       |
| 1961-1985            | 60,467                     | 58.30 | 15.2                            | 61.11 | 39,396                    | 49.06 | 14.5                            | 61.54 |
| 1986-1988            | 18,911                     | 18.23 | 2.6                             | 10.53 | 16,072                    | 20.02 | 2.5                             | 10.59 |
| 1989-1992            | 18,395                     | 17.74 | 3.5                             | 14.14 | 17,932                    | 22.33 | 3.3                             | 14.05 |
| 1993-1998            | 5,786                      | 5.58  | 2.8                             | 11.35 | 6,688                     | 8.33  | 2.6                             | 11.04 |
| 1999-2003            | 151                        | 0.15  | 0.7                             | 2.87  | 208                       | 0.26  | 0.7                             | 2.78  |

**Women**



**Men**

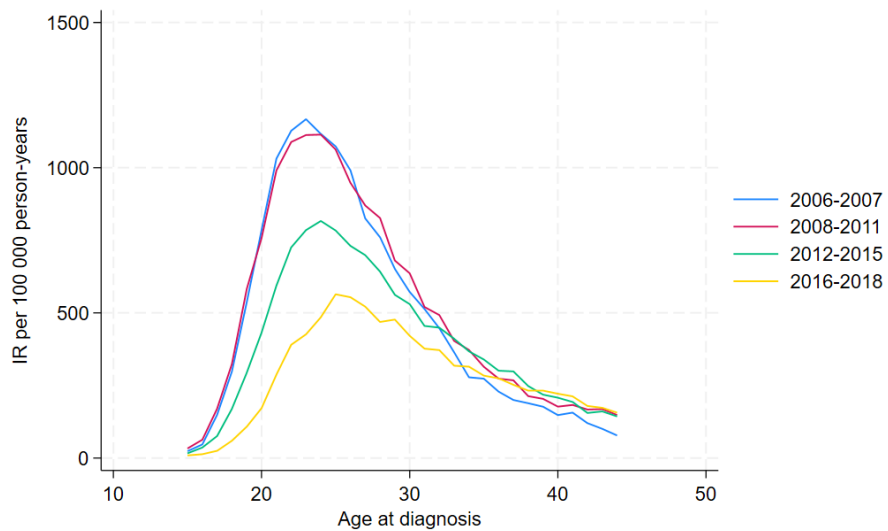
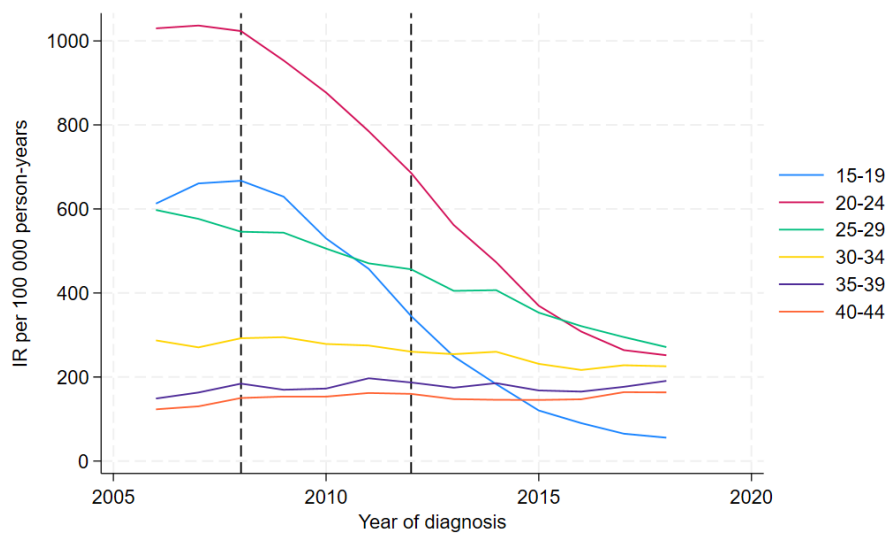


Figure 1: Age-trend of genital warts incidence rates among women and men, stratified by period



### Women



### Men

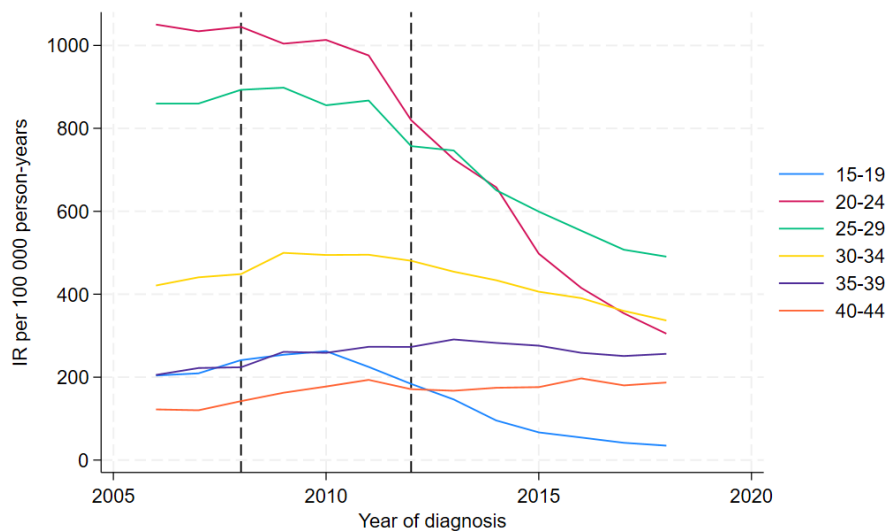


Figure 2: Incidence rates of genital warts among women and men between 2006 and 2018, stratified by age group. Dashed vertical line at 2008, denoting start of post-vaccination period, and at 2012, denoting start of school-based vaccination period

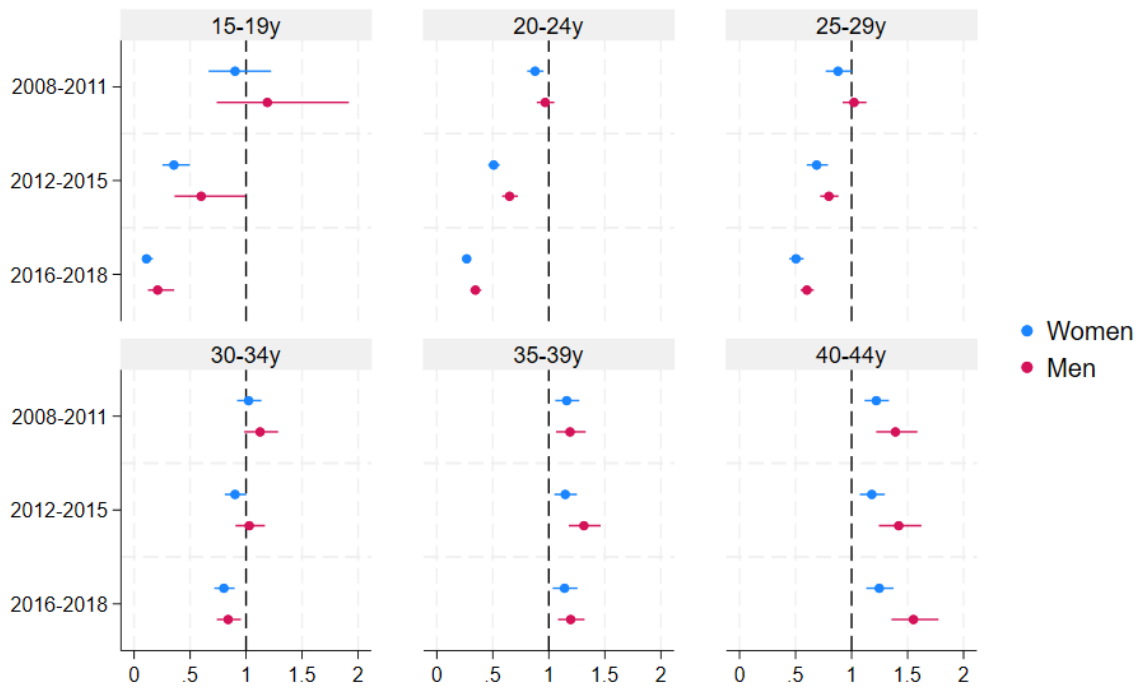


Figure 3: Age-specific incidence rate ratio of genital warts cases for post-vaccination time periods in reference to pre-vaccination (i.e. 2006-2007), stratified by sex

Table 2: Incidence Rate Ratio (IRR) of genital warts and estimated number of cases averted per birth cohort

| Birth Cohort | Vaccination Program(s) | IRR (95% CI)       | Cases (95% CI)          |
|--------------|------------------------|--------------------|-------------------------|
| <b>Women</b> |                        |                    |                         |
| 1961-1985    | Pre-vaccination        | 1.02 (0.98 - 1.07) | -                       |
| 1989-1992    | Subsidised             | 0.77 (0.73 - 0.82) | 5,232 (3,970 - 6,494)   |
| 1993-1998    | Catch-up               | 0.38 (0.35 - 0.42) | 10,925 (9,675 - 12,175) |
| 1999-2003    | School-based           | 0.07 (0.05 - 0.10) | 2,733 (2,347 - 3,119)   |
| <b>Men</b>   |                        |                    |                         |
| 1961-1985    | n/a                    | 1.13 (1.09 - 1.18) | -                       |
| 1989-1992    | n/a                    | 0.81 (0.78 - 0.85) | 4,236 (3,288 - 5,184)   |
| 1993-1998    | n/a                    | 0.44 (0.41 - 0.48) | 7,248 (6,525 - 7,970)   |
| 1999-2003    | n/a                    | 0.15 (0.12 - 0.19) | 859 (755 - 964)         |

\* Reference corresponds to birth cohort 1986-1988.