

1 **The central response of electroacupuncture for anxiety in**
2 **people with obesity based on resting-state functional**
3 **magnetic resonance imaging: a protocol for a randomized,**
4 **blinded, sham-controlled trial**

5 Qi Shu^{1,2+}, Qiumei Peng^{2,3+}, Wenxiu Duan^{1,2}, Fan Zhang^{1,2}, Qing Yu^{2,3*} and Ronglin
6 Cai^{2,3,4*}

7 ⁺ Qi Shu and Qiumei Peng contributed equally to this work.

8 ^{*} Correspondence: yuqingcm@126.com; ronglincai@ahtcm.edu.cn

9 ¹ College of Chinese Medicine, Anhui University of Chinese Medicine, 350 Longzihu Road, Hefei,
10 China.

11 ² Anhui Province Key Laboratory of Meridian Viscera Correlationship, 103 Meishan Road, Hefei,
12 China.

13 ³ Institute of Acupuncture and Meridian Research, Anhui University of Chinese Medicine, 350
14 Longzihu Road, Hefei, China.

15 ⁴ Center for Xin'an Medicine and Modernization of Traditional Chinese Medicine, Insitute of
16 Health and Medicine, Hefei Comprehensive National Science Center, 103 Meishan Road, Hefei,
17 China.

18 **Introduction** Obesity is a problem that is increasing worldwide and anxiety is a major
19 psychological disorder associated with obesity. Electroacupuncture (EA) has been
20 proved to be a feasible treatment for obesity and anxiety respectively in clinical
21 practice. However, to date, there are no data on EA's effectiveness on anxiety for
22 people with obesity. Therefore, this study aims to evaluate the efficacy and safety of
23 EA for anxiety in people with obesity, and to observe the brain functional status of
24 patients and the intervention effects of EA on brain function by functional magnetic
25 resonance imaging (fMRI).

26 **Methods and analysis** This study is a randomized, blinded, sham-controlled and
27 clinical trial. 72 obesity patients from two hospitals with anxiety will be randomly
28 divided into EA group and control group in 1:1 ratio by using a random number table.
29 Patients in EA group will receive EA treatment at specific acupoints with penetrating
30 needling for 8 weeks. The control group will receive Park's acupuncture with non-
31 penetrating needling. Weight, waist, BMI (Body Mass Index), SAS (Self-rating
32 Anxiety Scale), STAI (State-Trait Anxiety Inventory) and PSQI (Pittsburgh Sleep
33 Quality Index) will be performed before, after 8-week treatments and at one-month
34 follow-up in patients. Objective metabolic parameters such as triglyceride, total
35 cholesterol, fasting blood glucose, ghrelin, leptin, cortisol and adrenocorticotrophic
36 hormone will also be detected before and after 8-week intervention. 20 patients will
37 be randomly selected from EA group and control group, respectively, before
38 treatment, and 20 paired healthy participants will be recruited at the same time. The
39 20 patients will be scanned by fMRI before and after treatment while the other 20
40 healthy participants will be scanned only at baseline. Regional homogeneity,
41 amplitude of low-frequency fluctuation and resting-state-functional-connectivity will

42 be carried out to compare the dysfunctional brain regions between patients and
43 healthy participants, as well as the differences between two groups of patients after
44 treatment.

45 **Ethics and dissemination** The study protocol has been approved by the Hospital
46 Ethics Committee of Second Affiliated Hospital of Anhui University of Chinese
47 Medicine (2023-zj-42). Informed consent will be obtained prior to starting study-
48 related procedures. The results will be disseminated in peer-reviewed journals and at
49 scientific conferences.

50 **Trail Registration number** Chinese Clinical Trail Registry. ChiCTR2400083594,
51 registered 29 April 2024.

52 Keywords: Electro-acupuncture, Obesity, Anxiety, Randomized controlled trial

53 Word count: 3816.

54 **Introduction**

55 Overweight/obesity is a global issue with detrimental health impacts, which increases
56 the incidence of type 2 diabetes, fatty liver, coronary heart disease, and anxiety or
57 depression related mental disorders [1,2]. It is reported that more than 2.0 billion
58 adults worldwide are overweight [3]. In China, approximately 11.1% children and
59 adolescents aged 6-17 years are overweight and 7.9% are obese [4]. In addition,
60 psychological factors often co-occur with obesity and may consequently maintain
61 obesity [5,6]. For instance, high level of stress from work may change eating patterns
62 and lead to excessive food intake toward a higher fat and sugar diet [7]. People with
63 obesity and a disposition to anxiety, exhibit more emotional eating than normal
64 weight people in an experimental setting. Similarly, the stigmatization of body weight
65 and social discrimination may aggravate the anxiety and depression of obese
66 individuals [8]. Anti-obesity medications or bariatric surgery may assist people in
67 reaching and sustaining sufficient weight loss to meet treatment goal, but the
68 accompanying adverse gastrointestinal effects and adverse neuropsychiatric effects
69 such as irritability and insomnia add suffering to their lives. Although the relationship
70 between obesity and psychological disorders is complex, studies have shown that
71 anxiety is a common comorbidity associated with eating and weight-related disorders
72 [9,10]. Therefore, psychological intervention has also been introduced in the
73 multimodal management of patients with obesity.

74 **Rationale**

75 Overweight/obesity constitutes a global health priority because of its prevalence and
76 its association with numerous complications, among which anxiety is an undeniable
77 one. People with obesity report more emotional eating than normal-weight individuals,
78 and especially more emotional eating that is triggered by negative emotions, including
79 anxiety and depression [11,12]. In addition, individuals who are exposed to stress for
80 a long time may activate the hypothalamic-pituitary-adrenal (HPA) axis, leading to
81 binge eating and a preference for high sugar and high-fat foods, resulting in
82 overweight/obesity [13-15]. Therefore, management of overweight/obesity requires
83 multidisciplinary treatment and a long-term care, making it a tough work.

84 Social demand for an effective and safe treatment of obesity, including
85 complementary and alternative medicine has increased, and acupuncture therapy may
86 be a promising and acceptable treatment for overweight/obesity [16]. Currently,
87 accumulating evidences have been shown in the clinical studies and meta-analyses in
88 terms of the effectiveness and safety of electroacupuncture treatment for weight loss
89 [17-20]. Researchers have identified that acupuncture can adjust various metabolic
90 functions [21], improve the fat decomposition and suppress food addiction to achieve
91 weight loss [22]. Specially, lifestyle modification plus acupuncture treatment is more
92 effective than lifestyle modification alone [23]. According to previous research,
93 acupuncture combined with diet or exercise may be the most effective intervention for
94 weight loss [24]. Diet diary, a mild diet intervention (non low-carbon diet), is used to
95 improve the compliance of participants, and also facilitates our observation so as to
96 eliminate the interference of diet on EA treatment. Furthermore, other evidence
97 suggests that acupuncture exerts effect on the neuroendocrine system, modulates the
98 immune system reducing chronic low-grade inflammation and regulates the
99 microbiota disbalance associated with obesity [25-27].

100 Actually, clinical studies have confirmed that acupuncture treatment for anxiety is
101 effective and has unique advantages [28-30]. Animal experiments have also
102 demonstrated that acupuncture can adjust emotions by regulating the microbiota-gut-
103 brain axis, receptors in related regions and signal pathways [31,32]. Intestinal
104 microbiota may be a common mediator connecting obesity and emotions [33,34].
105 Neuroimaging results show that EA treatment increases ALFF and RSFC in regions
106 like prefrontal cortex (PFC) involved in inhibition control, motivation, sensory and
107 emotional processing in overweight/obesity individuals [35]. Weight gain can
108 negatively impact long-term mental health, which providing a suitable opportunity for
109 acupuncture treatment. Nevertheless, we could not find data to confirm acupuncture's
110 utility for anxiety in overweight/obese people. Moreover, the brain remains a hotbed
111 for research identifying the nuts and bolts of the molecular machinery leading to these
112 profound changes in emotion and body weight. Thus, further explorations need to be
113 conducted to clarify the central mechanism of anxiety with obese patients as well as
114 the mechanism of acupuncture treatment.

115 **Methods and analysis**

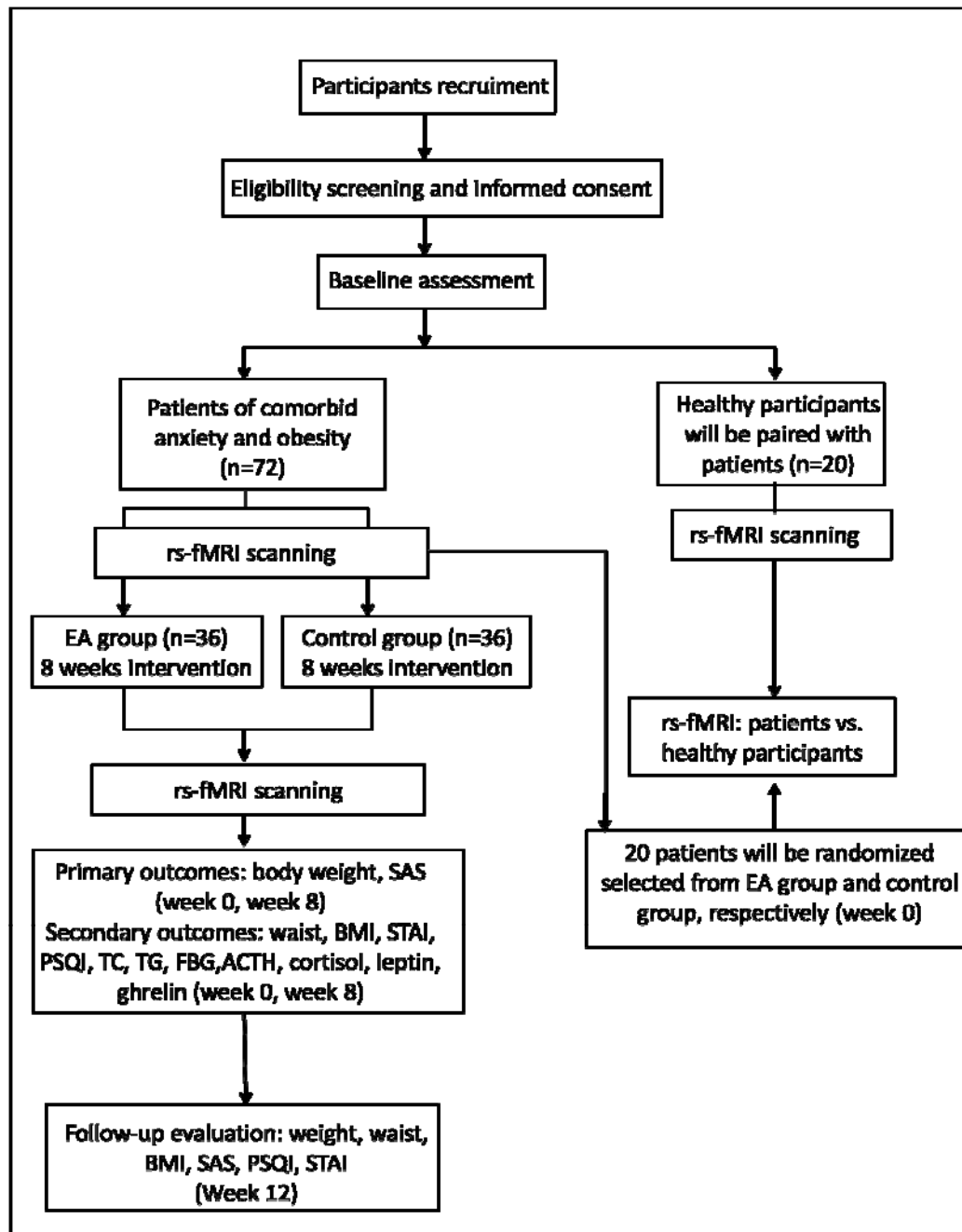
116 The randomized, blinded, sham- controlled trial aims to evaluate the efficacy and
117 safety of electroacupuncture for obese patients with anxiety, including the central
118 mechanism of electroacupuncture treatment based on fMRI.

119 **Study design**

120 This study is a prospective, randomized, participant and assessor blinded, sham-
121 controlled, two-armed, parallel-group study with a sample of 72 patients, 36 patients
122 in each arm. 72 potential participants from 2 hospitals in Anhui province will be
123 recruited through advertising posters from outpatient department of endocrinology,
124 department of acupuncture. Patients may also be referred to the trial by their doctors
125 (general practitioners, physiotherapists or acupuncturists) and randomly divided into
126 EA group and control group in 1:1 ratio by using a computer-generated random
127 number table, respectively, 20 patients will be selected from each group before
128 treatment. 20 paired healthy participants will be recruited at the same time. The
129 results of brain fMRI scanning will be compared to trace the location of specific

130 dysfunctional brain regions. Data for the assessment will be collected at baseline, 8-
131 week treatment, and one-month follow-up in two groups of patients, and data in
132 healthy group will be collected only at baseline.

133 This study protocol is reported in line with the Standard Protocol Items
134 Recommendations for Interventional Trials (SPIRIT) guidelines [36], which is
135 supplied in Supplementary File 1. This trial follows the principles of the Declaration
136 of Helsinki (Version Edinburgh 2000). This protocol was registered in the Chinese
137 Clinical Trial Registry (ChiCTR2400083594) and approved by the Hospital Ethics
138 Committee of Second Affiliated Hospital of Anhui University of Chinese Medicine
139 (2023-zj-42). Any modification in protocol is not expected unless necessary. Any
140 changes in the selection criteria or methodology will be discussed with the entire
141 research team and approved by the ethics committees. The trial flowchart is
142 summarized in Figure 1 and Table 1.



143

144 **Figure 1** Flow diagram of study design.

145 **Table 1** Trial Schedule

Item	Screening (-1 week)	Baseline (0 week)	Ttreatment period (8 week)	Follow-up period (12 week)
Informed consent	x			
Demography	x			
Allocation		x		
Intervention				
EA treatment			x	
Sham EA treatment			x	
Diet diary			x	
Assessment				
Body weight		x	x	x
Waist		x	x	x
BMI		x	x	x
SAS		x	x	x
STAI		x	x	x
PSQI		x	x	x
TC		x	x	
TG		x	x	
FBG		x	x	
Leptin		x	x	
Ghrelin		x	x	

Cortisol		×	×	
ACTH		×	×	
fMRI		×	×	
Participants safety				
Adverse event			×	

146

147 BMI: body mass index; WHR: waist-hip ratio; SAS: Self-rating Anxiety Scale; STAI:
 148 State-Trait Anxiety Inventory; PSQI: Pittsburgh Sleep Quality Index; TC: total
 149 cholesterol; TG: triglyceride; FBG: fasting blood glucose; fMRI: functional magnetic
 150 resonance imaging.

151 **Participants**

152 This study will recruit subjects from the Second Affiliated Hospital of Anhui
 153 University of Chinese Medicine and the Anhui Province Hospital of TCM. Eligibility
 154 of patients and healthy participants will be assessed by physicians using the criteria
 155 described below and appropriately compensated after they complete the entire
 156 procedure. Informed consent will be obtained once eligible patients agree to
 157 participate in the study.

158 **Diagnosis criteria**

159 This trial will adopt the diagnostic criteria of the World Health Organization for
 160 obesity in the Asia Pacific region and the diagnostic criteria for overweight/obesity in
 161 the guidelines for Prevention and Control of overweight and Obesity in Chinese
 162 Adults formulated by the Ministry of Health of China in 2003:

- 163 1. The body mass index (BMI) $\geq 25 \text{kg/m}^2$;
- 164 2. Waist circumference of men $\geq 85 \text{cm}$, waist circumference of women $\geq 80 \text{cm}$;
- 165 3. The actual measured body mass exceeds 20% of the standard body mass;

166 Note: After excluding secondary causes, it can be diagnosed as simple obesity if the
 167 above three criteria meet two or more.

168 **Inclusion criteria for patients**

- 169 1. Patients who meet the diagnostic criteria for simple obesity.
- 170 2. Self-Rating Anxiety Scale (SAS) baseline score ≥ 50 points; State Trait Anxiety
 171 Inventory (STAI) baseline score ≥ 40 points.
- 172 3. Patients aged 18-45 years.

173 4. Patients are right-handed and regardless of gender.

174 5. Patients able to accept the study and sign informed consent.

175 **Inclusion criteria for healthy participants**

176 20 age-matched healthy participants with similar age, sex, and educational
177 background will be immediately recruited to pair the patients. In addition, healthy
178 participants must meet the following criteria: physical fitness (no major illness history,
179 no genetic history, no mental, emotional disorders, no acute or chronic disease, no
180 cognitive impairment, no brain dysfunction or diseases, etc.), no history of fainting,
181 no contraindication for receiving fMRI scanning, and agree to participate in the study
182 and complete the treatment and examination as required.

183 **Exclusion criteria**

184 1. Patients with endocrine system disorders and major illnesses that require treatment.

185 2. Pregnant or lactating women.

186 3. Patients who have participated in acupuncture treatment in the past month.

187 4. Patients who have taken weight loss, anti anxiety and depression related drugs or
188 received weight loss treatment from a nutritionist within the past 3 months.

189 5. Patients with contraindications for fMRI.

190 6. Patients who are afraid of acupuncture and cannot cooperate with the treatment.

191 **Drop out criteria**

192 1. Patients experience severe adverse reactions during the study.

193 2. Patients whose acupuncture treatment is interrupted for one week or more.

194 3. The dietary records are largely missing or incomplete.

195 **Randomization and blinding**

196 Randomization will be done by SPSS (version 22.0) software in the study. The list of
197 generated random numbers will be printed, divided into small pieces, separated and
198 sealed in sequentially numbered envelopes. The special screeners will preserve the
199 envelopes, and they will open the envelope when each participant is included so the
200 group information can be gathered.

201 This is a patient-assessor blinded sham-controlled clinical trial. The participants will
202 be blinded by using Prak's non-invasive acupuncture needle (Acuprime, the United
203 Kingdom) at the same acupoint in the same stimulation manner. Only the traditional
204 Chinese medicine (TCM) practitioners know the allocation of each patient. The
205 assessors and the data analyst will be blinded to the procedure and results of
206 randomization, group allocation, and intervention. After the treatment, the participants
207 will be asked about perceived treatment allocation to evaluate the successful rate of
208 blinding.

209 **Interventions**

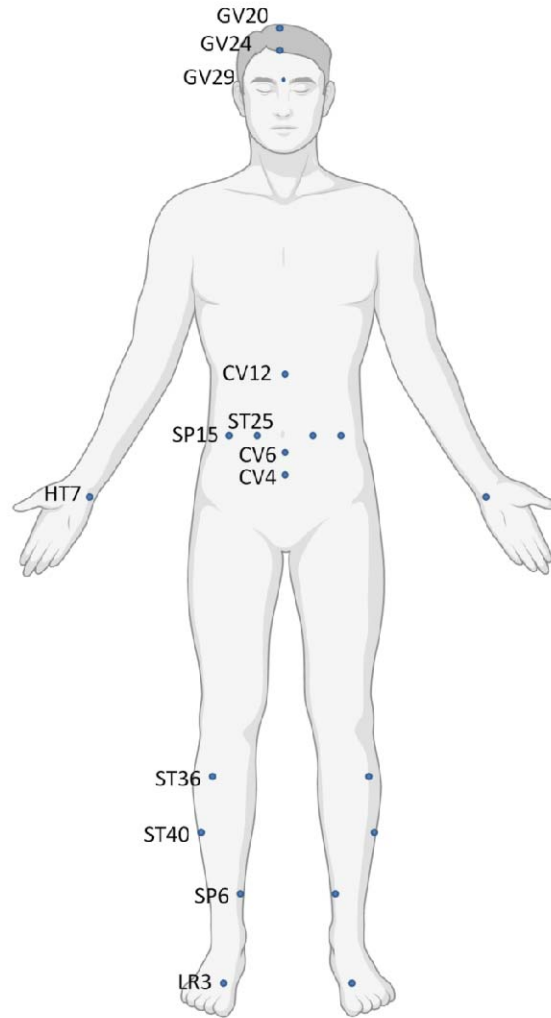
210 The baseline period is one week, the treatment period is eight weeks and the follow-
211 up is a month. Weight, waist circumference, BMI, SAS score, STAI score, PSQI
212 score will be recorded before, after 8-week treatments and at one-month follow-up in
213 patients. In addition, metabolic parameters such as triglyceride (TG), total cholesterol
214 (TC), glucose will also be detected before and after 8-week intervention. The dietary
215 records are also maintained during EA intervention. The participants in different
216 groups will be treated separately to avoid contamination during the process. fMRI will
217 be performed in two groups of patients at baseline (week 0), eight weeks after the
218 treatment. Healthy participants only receive fMRI scanning at baseline. After the
219 follow-up period, the control group will receive an eight-weeks EA treatment as
220 compensation.

221 **EA group**

222 Acupuncture will be performed by acupuncturists with over 5 years of clinical
223 acupuncture experience and obtained a license from the Ministry of Health of the
224 People's Republic of China. Before performing the treatment, acupuncturists will
225 receive centralized training courses which include an introduction to the basic clinical
226 research methods and a practical demonstration of the treatment. Patients will receive
227 electroacupuncture treatment three times a week, a total of 24 times for 8 weeks. The
228 needle retention time is 30 min at each time.

229 **Acupuncture acupoints**

230 The acupuncture point regimen is based on evidence-based clinical practice guidelines
231 of traditional Chinese medicine. All acupoints selected and their locations are
232 displayed in Figure 2 and Table 2.



233

234 **Figure 2** Diagram of acupoints.

235 **Table 2** Location of acupoints

Acupoints	Location
GV20(Baihui)	On the head, 5 cun above the center of the front hairline
GV24(Shenting)	On the head, 0.5 cun above the center of the front hairline
GV29 (Yintang)	In the depression between the inner ends of the eyebrows on the head
CV12(Zhongwan)	In the abdomen, 4 cun above the navel, on the anterior midline
CV6 (Qihai)	In the lower abdomen, 1.5 cun below the navel, on the anterior midline
	In the lower abdomen, 3 cun below the navel, on the anterior midline

CV4 (Guanyuan)	
ST25 (Tianshu)	In the abdomen, align the navel horizontally , 2 cun next to the anterior midline
SP15 (Daheng)	In the abdomen, align the navel horizontally, 4 cun next to the anterior midline
HT7 (Shenmen)	In the anterior wrist area, at the distal end of the transverse stripe on the palmar side of the wrist, at the radial edge of the tendon in the ulnar wrist area
ST36 (Zusanli)	On the outer side of the calf, 3 cun below the acupoint Dubi, 1 transverse finger outside the anterior tibial crest, on the line connecting the acupoint Dubi and acupoint Jiexi
ST40 (Fenglong)	On the outer side of the calf, 8 cun above the tip of the outer ankle, on the outer edge of the anterior tibial muscle, one finger away from the acupoint Tiaokou
SP6 (Sanyinjiao)	On the inner side of the calf, 3 cun above the tip of the inner ankle, at the posterior edge of the medial edge of the tibia On the anterior depression at the junction of the first and second metatarsals on the dorsum of the foot
LR3 (Taichong)	

236

237 **Manipulation**

238 Patients are in a supine position and the acupoints and needle are disinfected before
239 acupuncture operation. For GV20 (Baihui), the needle will be inserted backward
240 under the cap membrane at angle of 45° with the scalp; for GV24 (Shenting), the
241 needle will be inserted backward under the cap membrane at an angle of 15° with the
242 scalp; for GV29 (Yin tang), the needle will be inserted downward at an angle of 15°
243 under the periosteum; making the patients feel heavy pressure and acid distension. For
244 CV12 (Zhong wan), CV6 (Qihai), CV4 (Guan yuan), ST25 (Tianshu), SP15
245 (Daheng), HT7 (Shenmen), ST36 (Zusan i), ST40 (Feng long), SP6 (Sanyinjiao) and
246 LR3 (Taichong), needles will be inserted at a depth of 25-35 mm vertically. The
247 needles will be gently rotated and lifted once to achieve a sense of sourness,
248 distention and heaviness. Electroacupuncture will then be applied to the abdominal

249 and crural acupoints with 2/10Hz dilatational waves through electronic needle therapy
250 device (SDZ-III, Huatuo, China).

251 **Control group**

252 Park's non-invasive acupuncture needle will be performed at the same acupoints in
253 the same stimulation manner but the needles will only adhere to the skin and nit be
254 inserted. The validity and credibility of the model have been fully proven. The
255 acupoints in the control group will also be connected to the same electronic needle
256 therapy device without electric current.

257 **Healthy group**

258 There will be no treatment specifically designed for the healthy group.

259 **Lifestyle intervention**

260 Dining according to the guidance of the Chinese Dietary Pagoda. All patients will be
261 advised to take regular number of meals daily and not to intake any snacks. In
262 addition, all participants will be required not to take exercise except for essential
263 activities in their daily work in order to evaluate the sole effect of acupuncture
264 treatment. The patient diet diary is supplied in Supplementary File 2.

265 **Outcome Measures**

266 A printed or electronic case report form (CRF) with the random number for each
267 participant will be used to record all information. Two assessors who are blind to the
268 group allocations will collect the basic information and assess the outcomes from the
269 baseline to the end of follow-up. Telephone interviews combined with offline visits
270 are the main methods to use during the follow-up period.

271 **Primary outcome measures**

272 The primary outcomes will be the changes in the weight and SAS scores before and
273 after the treatment.

274 **Self-rating Anxiety Scale (SAS)** Self-rating Anxiety Scale (SAS) has been proposed as a
275 useful tool for measuring the frequency of anxiety symptoms. The questionnaire
276 adopts a four-level rating system with 20 items. Add up the scores of 20 items to
277 obtain a rough score and multiply the rough score by 1.25 to obtain the standard score.
278 A standard score greater than 50 indicates the presence of anxiety.

279 **Secondary outcome measures**

280 The secondary outcomes will include the changes in waist circumference, BMI, STAI
281 scores, PSQI score during treatment and follow-up period. Total cholesterol (TC),
282 triglyceride (TG), fasting blood glucose (FBG), cortisol, adrenocorticotrophic hormone
283 (ACTH), leptin and ghrelin will be measured before and after the 8-week treatment.
284 Body weight, BMI and WHR are measured by body composition analyzer (JAWON
285 GAIA KIKO, Korea).

286 **State-trait anxiety inventory (STAI)** The State-trait anxiety inventory (STAI) consists of
287 40 questions and is divided into two sub scales, evaluating anxiety as a transient state

288 (state anxiety) and a latent trait (trait anxiety). The subscale score ranges from 20 to
289 80, with higher scores indicating higher levels of anxiety. [37,38]

290 **Pittsburgh Sleep Quality Index (PSQI)** The 18-item PSQI questionnaire is a reliable and
291 valid measure of sleep quality. The total score ranges from 0 to 21. PSQI > 7 as a
292 reference threshold for adult sleep quality issues.

293 **rs-fMRI examination and data analysis**

294 A blood oxygenation level dependent gradient echo-planner imaging (BOLD GRE-
295 EPI) sequence will be used to scan the whole brain, TR/TE=2000ms/30ms, turning
296 angle = 90°, FOV= 220mm ×220mm, matrix = 64×64, slice thickness/spacing=
297 3.0/1.0 mm, layer number = 36, scanning time 8 min. All participants will lie flat on
298 the scanning bed with their eyes closed, and without performing any tasks.

299 Image preprocessing will be conducted by Statistical Parametric Mapping (SPM12,
300 <http://www.fil.ion.ucl.ac.uk/spm>) and the Resting-State fMRI Data Analysis Toolkit
301 (REST, <http://www.restfmri.net>) on Matlab (MathWorks, Inc., Natick, MA, USA).
302 Data preprocessing will be accomplished by SPM12: 1) remove the previous 5
303 unstable time points of the data; 2) time correction of the remaining time points; 3)
304 spatial head motion correction; 4) all the subjects' images will be spatially
305 standardized, and re-sampled to a voxel size of 3 × 3 × 3 mm²; 5) remove linear drift;
306 6) removal of the covariates of head motion parameters and cerebrospinal fluid signal
307 covariates; 7) remove the effects of high-frequency noise by band-pass filtering (0.01-
308 0.08 Hz) [39-43].

309 **The regional homogeneity (ReHo) calculation** ReHo measuring the short-distance
310 functional connectivity at voxel-level with Kendall's coefficient of concordance
311 (KCC), which was calculated from the consistency of the time series between each
312 individual hormone and its 26 closest neighbors in the brain region. By calculating the
313 KCC value of each given Voxel, the KCC diagram or ReHo diagram of each subject
314 can be obtained. ReHo will be obtained by dividing the average KCC value of the
315 whole brain into the KCC value of each voxel. Finally, we will smooth with a
316 Gaussian kernel of 6 mm full-width at half-maximum (FWHM) to reduce noise [44-
317 46].

318 **The amplitude of low-frequency fluctuation (ALFF) calculation** The ALFF algorithm
319 assumed that the low frequency BOLD signals in resting-state brain has its
320 physiological signification. It uses the average of the amplitudes of all the frequencies
321 in a certain frequency band (0.01 ~ 0.08 Hz) to characterize the spontaneous activity
322 of a voxel which reflects the level of the spontaneous activity of each voxel at rest on
323 the view of energy point. The preprocessed time series will be first converted to a
324 frequency domain with a fast Fourier transform and the power spectrum is obtained.
325 The square root of the power spectrum is computed at each voxel and the averaged
326 square root is obtained in the 0.01–0.08 Hz bandwidth at each voxel. For
327 standardization, ALFF of each voxel is further divided by whole-brain mean ALFF
328 values [47,48].

329 **The functional connectivity (FC) calculation** The regions showing significant results in
330 the ALFF are defined as regions-of-interest (ROIs). After obtaining ALFF-ROIs with
331 significant main/interaction effects, a seed-region-based (center at coordinates of the

332 peak value with a 6mm radius) RSFC-analysis is carried out. We will use band-pass
333 filtering with a frequency range of 0.01–0.08 Hz for the RSFC calculation. Meantime-
334 series of each ROI from the resting-state-scan is extracted, and then the strength of the
335 RSFC for each voxel is estimated using a Pearson-correlation-coefficient between the
336 average time-varying signal in the seed and voxel in the brain. Fisher transform is
337 used to convert correlation maps into normally distributed coefficient maps. A two-
338 way-ANOVA was implemented in SPM 12 to model the effects of group and time on
339 seed-based-RSFC with an identical threshold as for ROI identification (pFWE < 0.05,
340 cluster size of 50, cluster-forming threshold of $p < 0.001$). One-sample-t-test is used
341 to test the significance of functional connections of each group of ROIs [49].

342 **Incidence of Adverse Events**

343 EA is widely accepted as relatively safe if applied appropriately by competent
344 practitioners. The type, time of occurrence, severity, and duration of the adverse
345 events will be recorded in detail from week 0 to 8 and follow-up. Adverse events
346 associated with EA might include fainting, stuck needle, bent needle, broken needle
347 and hematoma, which will be reported to the Ethics Committee. The determination to
348 discontinue the trial for a participant will be made by physicians.

349 Participants who suffer harm will be compensated.

350 **Sample Size**

351 This study estimated the sample size using the sample size estimation formula based
352 on the comparison of two sample means described in the following formula:

$$n_1 = n_2 = 2 \left[\frac{(u_{\alpha/2} + u_{\beta})}{\delta/\sigma} \right]^2 + \frac{1}{4} u_{\alpha/2}^2$$

353 . Among the formula, n_1 and n_2 are the required
354 sample sizes for two groups, respectively. Based on our pre-experiment, $\delta/\sigma = 0.86$. In
355 this study $\mu_{\alpha/2} = 1.960$, $\mu_{\beta} = 1.282$, after substituting into the above formula, each group
356 requires 30 participants. Considering issues such as compliance and loss of follow-up
357 during clinical trials, an additional 20% sample size was added, resulting in a total of
358 72 participants recruited.

359 **Quality Control**

360 All staff will undergo special training on the purpose and content of the trial,
361 treatment strategies, and quality requirements before the trial. Monitors will check the
362 participant adverse event table, the participants' dietary diaries and case report form
363 once a week as well as the EA operation during the treatment period. Dropouts and
364 withdrawals and the underlying reasons will be documented in detail throughout the
365 trial.

366 **Data Collection and Management**

367 The researchers will be required to fill the CRF with the data collected in accordance
368 with the requirements of the study program. The researchers will submit to data
369 management center the complete and signed CRF of all the selected patients in the
370 study after the study is finished. The consistency of case report data collected from
371 the study will be checked, and queries for inconsistent data will be sent to doctors for

372 clarification. The personal CRF of each participant will be stored in a locked cabinet.
373 All electronic documents will be stored in Anhui University of Chinese Medicine
374 computer with password protection. Access to all research data will only be permitted
375 to an authorized research team member.

376 All participants will receive a summary of study findings and group information upon
377 trial completion. Five years after the end of the project, the electronic documents need
378 to be deleted.

379 **Statistical Analysis**

380 Based on the intention-to-treat (ITT) principle, an independent statistician will verify
381 the effectiveness and safety of the intervention. Values missing from the dataset will
382 be imputed using last-observation-carried-forward method.

383 The statistician will perform statistical analysis by using SPSS 23.0 statistics software
384 (SPSS Inc, Chicago, IL, USA) and GraphPad 7.04 statistics software (GraphPad
385 Software Co., San Diego, California, USA). For continuous data, the data will be
386 presented as mean \pm SD if normally distributed or as median (IQR) if not normally
387 distributed. Longitudinal continuous data will be compared between the groups by
388 repeated-measures analysis of variance (ANOVA). Other continuous data will be
389 analyzed by Student's t-test and Wilcoxon rank-sum test, and categorical data by χ^2
390 test or Fisher's exact test, as appropriate. Linear correlation analysis will be conducted
391 to measure the closeness of linear correlation between variables. $P \leq 0.05$ will be
392 considered statistically significant.

393 For ReHo analysis and ALFF analysis, 2-sample-t-tests will be conducted within the
394 anxiety combined with obesity patients and healthy participation before treatment, as
395 well as EA group and control group before and after treatment. Paired t-tests will be
396 performed between two groups of patients before and after treatment to evaluate the
397 ReHo and ALFF difference, $P \leq 0.05$ is used to indicate a significant difference. The
398 ALFF brain region (different brain region) to which the peak point belonged will be
399 determined according to REST 1.8 software. The different brain regions of the two
400 groups will be set as seed points, and the FC between each seed point and other brain
401 regions are analyzed separately.

402 **Dissemination**

403 The results will be published in peer-reviewed journal, a PhD thesis and presented at
404 conferences. Data will be published in aggregate to avoid individual participant
405 identification and presented in such a way that identifiable data are removed.

406 **Article Summary**

407 **Strengths and limitations of this study** This study may provide high-quality
408 evidence regarding the efficacy and safety of EA for patients with obesity and anxiety
409 comorbidities. In addition, fMRI will be introduced into clinical trials of EA
410 intervention and provide further objective basis for the efficacy, immediate effect,
411 cumulative effect and long-term effect of EA treatment. However, the current trail has
412 a small sample size.

413 **Trial Status**

414 Participant enrollment is started from May 2024. 40 participants have been recruited
415 till now.

416 **Abbreviations**

417 EA: Electroacupuncture; rs-fMRI: resting-state functional magnetic resonance
418 imaging; BMI: Body mass index; SAS: Self-rating anxiety scale; STAI: State-trait
419 anxiety inventory; PSQI: Pittsburgh sleep quality index; TG: Triglyceride; TC: Total
420 cholesterol; FBG: Fasting blood glucose; ReHo: Regional homogeneity; ALFF:
421 Amplitude of low-frequency fluctuation; RSFC: Resting-state-functional-connectivity;
422 SPIRT: Standard Protocol Items Recommendations for Interventional Trials; TCM:
423 Traditional Chinese medicine; CRF: case report form; ITT: Intention-to-treat; HPA:
424 Hypothalamic-pituitary-adrenal; RCT: Randomized controlled trial; PFC: prefrontal
425 cortex.

426 **Acknowledgements**

427 We appreciate the effort and help from all of those involved in this trial.

428 **Author Contributions**

429 QS is the main researcher who designed the study, drafted the manuscript and
430 registered the trail in Chinese Clinical Trail Registry. QMP is the co-researcher who
431 contributed to the design of the protocol and writing of the manuscript. WXD and
432 FZ contributed to the design of the interventions. QY contributed to the statistical
433 design and the revision of the manuscript. RLC provided the funding and revised the
434 manuscript. All authors contributed to the revision and approved the final manuscript.

435 **Funding**

436 This work is supported by the "Unveiled and Leading" Project (2023CXMMTCM019)
437 from the Center for Xin'an Medicine and Modernization of Traditional Chinese
438 Medicine, Insitute of Health and Medicine, Hefei Comprehensive National Science
439 Center. The funding organization has no role in designing and analyzing the study.

440 **Availability of data and materials**

441 No data were used to support this protocol. The outcomes data of the trial will be
442 published within the final study manuscript and will also be uploaded to the Chinese
443 Clinical Trial Registry.

444 **Declarations**

445 **Ethics approval and consent to participate**

446 This study has been approved by the Ethics Committee of the Second Affiliated
447 Hospital of Anhui University of Chinese Medicine (Approved number: 2023-zj-42).
448 All participants will be informed and sign a written consent form.

449 **Patient and public involvement**

450 Patients and/or the public were involved in the design, or conduct, or reporting, or
451 dissemination plans of this research. Refer to the Methods section for further details.

452 **Patient consent for publication**

453 Not applicable.

454 **Provenance and peer review**

455 Not commissioned; externally peer reviewed.

456 **Competing interests**

457 The authors declare that they have no competing interests.

458 **References**

459 [1] Poston L, Caleyachetty R, Cnattingius S, et al. Preconceptional and maternal obesity:
460 epidemiology and health consequences. *Lancet Diabetes Endocrinol.* 2016;4:1025–1036.

461 [2] Raman J, Smith E, Hay P. The clinical obesity maintenance model: An integration of
462 psychological constructs including mood, emotional regulation, disordered overeating, habitual
463 cluster behaviours, health literacy and cognitive function. *J Obes.* 2013;2013:1–9.

464 [3] Endalifer ML, Diress G. Epidemiology, predisposing factors, biomarkers, and prevention
465 mechanism of obesity: a systematic review. *J Obes.* 2020;2020: 6134362

466 [4] Pan XF, Wang L, Pan A. Epidemiology and determinants of obesity in China. *Lancet Diabetes
467 Endocrinol.* 2021;9(6):373–92.

468 [5] Susan L. McElroy, Renu Kotwal, Shishuka Malhotra, et al. Are mood disorders and obesity
469 related? A review for the mental health professional. *J Clin Psychiatry.* 2004;65:634–651.

470 [6] Rajan, T. M., & Menon, V. Psychiatric disorders and obesity: A review of association studies.
471 *Journal of Postgraduate Medicine.* 2017;63(3), 182–190.

472 [7] Gibson EL. The psychobiology of comfort eating: implications for neuropharmacological
473 interventions. *Behav Pharmacol.* 2012;23:442–60.

474 [8] Irene Svenningsson, Cecilia Bjorkelund, Bertil Marklund, et al. Anxiety and depression in
475 obese and normal-weight individuals with diabetes type 2: a gender perspective. *Scandinavian
476 Journal of Caring Sciences.* 2012;26:349–354.

477 [9] Kauffman, B. Y., Garey, L., Jardin, C., et al. Body mass index and functional impairment: The
478 explanatory role of anxiety sensitivity among treatment-seeking smokers. *Psychology, Health &
479 Medicine.* 2018, 23(2), 232–243.

480 [10] Garipey G, Nitka D, Schmitz N. The association between obesity and anxiety disorders in the
481 population: a systematic review and meta-analysis. *Int J Obes.* 2010;34(3):407–419.

482 [11] Clemence Willem, Marie-Charlotte Gandolphe, Karyn Doba, et al. Eating in case of emotion
483 dys-regulation, depression and anxiety: Different pathways to emotional eating in moderate and
484 severe obesity. *Clinical Obesity.* 2020:e12388.

485 [12] van Strien T, Donker MH, Ouwens MA. Is desire to eat in response to positive emotions an
486 “obese” eating style: is Kumperspeck for some people a misnomer? *Appetite.* 2016;100:225–235.

487 [13] Ouakinin SR, Barreira DP, Gois CJ. Depression and obesity: Integrating the role of stress,
488 neuroendocrine dysfunction and inflammatory pathways. *Front Endocrinol.* 2018, 9:431.

- 489 [14] N.R.W.Geiker, A. Astrup, M. F. Hjorth, et al. Does stress influence sleep patterns, food
490 intake, weight gain, abdominal obesity and weight loss interventions and vice versa? *Obes Rev.*
491 2018,19(1):81-97.
- 492 [15] Sinha R, Jastreboff AM. Stress as a common risk factor for obesity and addiction. *Biol*
493 *Psychiatry.* 2013; 73: 827–835.
- 494 [16] S-Y Kim, I-S Shin and Y-J Park. Effect of acupuncture and intervention types on weight loss:
495 a systematic review and meta-analysis. *Obesity Reviews.* 2018,19(11):1585-1596.
- 496 [17] Linda L. D. Zhong, Xingyao Wu, Tsz Fung Lam, et al. Electro-acupuncture for central
497 obesity: randomized, patient-assessor blinded, sham-controlled clinical trial protocol. *BMC*
498 *Complementary Medicine Therapies.* 2021,21:190.
- 499 [18] Cho SH, Lee JS, Thabane L, et al. Acupuncture for obesity: a systematic review and meta-
500 analysis. *Int J Obes.*2009,33(2):183-96.
- 501 [19] Yin Y, Zhao Q, Li S, et al. Efficacy of acupuncture and moxibustion therapy for simple
502 obesity in adults: a meta-analysis of randomized control trials. *Medicine*,2022,101(43):e31148.
- 503 [20] Huang D, Liu Z, Xu B, et al. Effect of acupuncture and moxibustion on severe obesity
504 complicated with hyperlipidemia in different genders. *Zhongguo Zhen Jiu*,2018,38(7):685-689.
- 505 [21] Wang L, Yu CC, Li J, et al. Mechanism of action of acupuncture in obesity: a perspective
506 from the hypothalamus. *Front Endocrinol.* 2021,12:632324.
- 507 [22] Jason Aaron Chen, Justin Albert Chen, Sanghoon Lee, et al. Potential role for acupuncture in
508 the treatment of food addiction and obesity. *Acupunct Med.* 2017,0:1-4.
- 509 [23] Fang S, Wang M, Zheng Y, et al. Acupuncture and lifestyle modification treatment for
510 obesity: a meta-analysis. *Am J Chin Med.* 2017,45(2):239-254.
- 511 [24] Kim SY, Shin IS, Park YJ. Comparative effectiveness of a low-calorie diet combined with
512 acupuncture, cognitive behavioral therapy, meal replacements, or exercise for obesity over
513 different intervention periods: a systematic review and network meta-analysis. *Front Endocrinol.*
514 2022,13:772478.
- 515 [25] Park KS, Park KI, Suh HS, Hwang DS, Jang JB, Lee JM. The efficacy and safety of
516 acupuncture on serum leptin levels in obese patients: A systematic review and metaanalysis. *Eur J*
517 *Integr Med.* 2017, 11:45–52.
- 518 [26] Sheng J, Yang G, Jin X, Si C, Huang Y, Luo Z, et al Electroacupuncture combined with diet
519 treatment has a therapeutic effect on perimenopausal patients with abdominal obesity by
520 improving the community structure of intestinal flora. *Front Physiol.* 2021, 12:708588.
- 521 [27] Raymond Guy Landgraaf, Michelle Nigte Bloem, Massimo Fumagalli, et al. Acupuncture as
522 multitargeted therapy for the multifactorial disease obesity: a complex neuro-endocrine-immune
523 interplay. *Front. Endocrinol.* 2023,14:1236370.
- 524 [28] Fan JQ, Lu WJ, Tan WQ, et al. Effectiveness of acupuncture for anxiety among patients with
525 parkinson disease: a randomized clinical trial. *JAMA Netw Open.* 2022,5(9):e2232133.
- 526 [29] Amorim D, Brito I, Caseiro A, et al. Electroacupuncture and acupuncture in the treatment of
527 anxiety-a double blinded randomized parallel clinical trail. *Complement Ther Clin Pract.*
528 2022,46:101541.
- 529 [30] Zanella S, Buccelletti F, Vassiliadis A, et al. Preoperative anxiety management: acypuncture
530 vs. pharmacological treatment-a prospective study. *Eur Rev Med Pharmacol Sci.* 2022,26(3):900-
531 905.

- 532 [31] Bai L, Zhang D, Cui TT, et al. Mechanisms underlying the antidepressant effect of
533 acupuncture via the CaMK signaling pathway. *Front Behav Neurosci.* 2020,14:563698.
- 534 [32] Wu M, Chen Y, Shen Z, et al. Electroacupuncture alleviates anxiety-like behaviors induced
535 by chronic neuropathic pain regulating different dopamine receptors of the basolateral amygdala.
536 *Mol Neurobiol.* 2022,59(9):5299-5311.
- 537 [33] Cryan JF, O’Riordan KJ, Cowan CSM, et al. The microbiota-gut-brain axis. *Physiol Rev.*
538 2019,99(4):1877-2013.
- 539 [34] Petra AI, Panagiotidou S, Hatzigelaki E, et al. Gut-microbiota-brain axis and its effect on
540 neuropsychiatric disorders with suspected immune dysregulation. *Clin Ther.* 2015,37(5):984-995.
- 541 [35] Yuanyun Ren, Mingzhu Xu, Karen M. von Deneen, et al. Acute and long-term effects of
542 electroacupuncture alter frontal and insular cortex activity and functional connectivity during
543 resting state. *Psychiatry Research: Neuroimaging.* 2020; 298:111047.
- 544 [36] Chan A-W, Tetzlaff JM, Gøtzsche PC, Altman DG, Mann H, Berlin J, Dickersin K,
545 Hróbjartsson A, Schulz KF, Parulekar WR, Krleža-Jerić K, Laupacis A, Moher D. SPIRIT 2013
546 Explanation and Elaboration: Guidance for protocols of clinical trials. *BMJ.* 2013;346:e7586
- 547 [37] Spielberger CD, Gorsuch RC, Lushene RE. *Manual for the State-Trait Anxiety Inventory.* Palo
548 Alto, CA: Consulting Psychologists Press; 1970.
- 549 [38] İknur Yeşilçınar, Gamze Acavut, Gülten Güvenç. Anxiety during the pregnancy and affecting
550 factors: a cross-sectional study. *Archives of Gynecology and Obstetrics,* 2023,307(1):301-309.
- 551 [39] Tsai YH, Yuan R, Patel D, et al Altered structure and functional connection in patients with
552 classical trigeminal neuralgia. *Hum Brain Mapp.* 2018;39(2):609–621.
- 553 [40] Long X, Liu F, Huang N, et al Brain regional homogeneity and function connectivity in
554 attenuated psychosis syndrome -based on a resting state fMRI study. *BMC Psychiatry.*
555 2018;18(1):383.
- 556 [41] Sun J, Li R, Li X, et al Electroacupuncture therapy for change of pain in classical trigeminal
557 neuralgia. *Medicine.* 2020;99(16):e19710.
- 558 [42] Chunlin Li, Yuangeng Wang, Baopeng Li, et al. Effects of acupuncture at neiguan in neural
559 activity of related brain regions: a resting-state fMRI study in anxiety. *Neuropsychiatric Disease*
560 *and Treatment.* 2022,18:1375-1384.
- 561 [43] Yang He, Karen M. von Deneen, Guanya Li, et al. Electroacupuncture enhances resting-state
562 functional connectivity between dorsal caudate and precuneus and decreases associated leptin
563 levels in overweight/obese subjects. *Brain Imaging and Behavior.* 2022,16:445-454.
- 564 [44] Xiang CQ, Liu WF, Xu QH, et al Altered spontaneous brain activity in patients with classical
565 trigeminal neuralgia using regional homogeneity: a resting-state functional MRI study. *Pain Pract.*
566 2019;19 (4):397–406.
- 567 [45] Ding Tang, Xufen Zhang, Yani Xu, et al. The central response of electroacupuncture on
568 trigeminal neuralgia based on resting-state functional magnetic resonance imaging: a protocol for
569 a pre-experimental, single-centre, randomized, controlled trial. *Journal of Pain Research.*
570 2021,14:3321-3331.
- 571 [46] Yue Ma, Zhi Wang, Jiakai He, et al. Transcutaneous auricular vagus nerve immediate
572 stimulation treatment for treatment-resistant depression: a functional magnetic resonance imaging
573 study. *Frontiers in Neurology.* 2022,13:931838.
- 574 [47] Yuangeng Wang, Chunlin Li, Xianghua Qi. The effect of acupuncture at the Yuji point on
575 resting-state brain function in anxiety. *Medicine.* 2023,102(8):e33094.

576 [48] Yukai Wang, Tie Li, Lijuan Ha, et al. Effectiveness and cerebral responses of multi-points
577 acupuncture for primary insomnia: a preliminary randomized clinical trial and fMRI study. BMC
578 Complementary Medicine and Therapies. 2020,20:254.

579 [49] Xingxian Huang, Yuanyuan Zhou, Xinru Wang, et al. Structural and functional improvement
580 of amygdala sub-regions in postpartum depression after acupuncture. Fronteries in Human
581 Neuroscience. 2023,17:1163746.

582 Reporting checklist for protocol of a 583 clinical trial.

584 Based on the SPIRIT guidelines.

585 Instructions to authors

586 Complete this checklist by entering the page numbers from your manuscript where
587 readers will find each of the items listed below.

588 Your article may not currently address all the items on the checklist. Please modify
589 your text to include the missing information. If you are certain that an item does not
590 apply, please write "n/a" and provide a short explanation.

591 Upload your completed checklist as an extra file when you submit to a journal.

592 In your methods section, say that you used the SPIRITreporting guidelines, and cite
593 them as:

594 Chan A-W, Tetzlaff JM, Gøtzsche PC, Altman DG, Mann H, Berlin J, Dickersin K,
595 Hróbjartsson A, Schulz KF, Parulekar WR, Krleža-Jerić K, Laupacis A, Moher D.
596 SPIRIT 2013 Explanation and Elaboration: Guidance for protocols of clinical trials.
597 BMJ. 2013;346:e7586

		Reporting Item	Page Number
Administrative information			
Title	#1	Descriptive title identifying the study design, population, interventions, and, if applicable, trial acronym	1
Trial registration	#2a	Trial identifier and registry name. If not yet registered, name of intended registry	2, line 48
Trial registration: data set	#2b	All items from the World Health Organization Trial Registration Data Set	2

Protocol version	#3	Date and version identifier	n/a
Funding	#4	Sources and types of financial, material, and other support	15
Roles and responsibilities: contributorship	#5a	Names, affiliations, and roles of protocol contributors	15
Roles and responsibilities: sponsor contact information	#5b	Name and contact information for the trial sponsor	n/a
Roles and responsibilities: sponsor and funder	#5c	Role of study sponsor and funders, if any, in study design; collection, management, analysis, and interpretation of data; writing of the report; and the decision to submit the report for publication, including whether they will have ultimate authority over any of these activities	n/a
Roles and responsibilities: committees	#5d	Composition, roles, and responsibilities of the coordinating centre, steering committee, endpoint adjudication committee, data management team, and other individuals or groups overseeing the trial, if applicable (see Item 21a for data monitoring committee)	13-14
Introduction			
Background and rationale	#6a	Description of research question and justification for undertaking the trial, including summary of relevant studies (published and unpublished) examining benefits and harms for each intervention	2-3
Background and rationale: choice	#6b	Explanation for choice of comparators	2

of comparators

Objectives	#7	Specific objectives or hypotheses	3,line 114-116
Trial design	#8	Description of trial design including type of trial (eg, parallel group, crossover, factorial, single group), allocation ratio, and framework (eg, superiority, equivalence, non-inferiority, exploratory)	3-6

**Methods:
Participants,
interventions,
and outcomes**

Study setting	#9	Description of study settings (eg, community clinic, academic hospital) and list of countries where data will be collected. Reference to where list of study sites can be obtained	4-6
Eligibility criteria	#10	Inclusion and exclusion criteria for participants. If applicable, eligibility criteria for study centres and individuals who will perform the interventions (eg, surgeons, psychotherapists)	6-7
Interventions: description	#11a	Interventions for each group with sufficient detail to allow replication, including how and when they will be administered	8-11
Interventions: modifications	#11b	Criteria for discontinuing or modifying allocated interventions for a given trial participant (eg, drug dose change in response to harms, participant request, or improving / worsening disease)	7
Interventions: adherence	#11c	Strategies to improve adherence to intervention protocols, and any	n/a

		procedures for monitoring adherence (eg, drug tablet return; laboratory tests)	
Interventions: concomitant care	#11d	Relevant concomitant care and interventions that are permitted or prohibited during the trial	11
Outcomes	#12	Primary, secondary, and other outcomes, including the specific measurement variable (eg, systolic blood pressure), analysis metric (eg, change from baseline, final value, time to event), method of aggregation (eg, median, proportion), and time point for each outcome. Explanation of the clinical relevance of chosen efficacy and harm outcomes is strongly recommended	11-13
Participant timeline	#13	Time schedule of enrolment, interventions (including any run-ins and washouts), assessments, and visits for participants. A schematic diagram is highly recommended (see Figure)	5, figure 1
Sample size	#14	Estimated number of participants needed to achieve study objectives and how it was determined, including clinical and statistical assumptions supporting any sample size calculations	13
Recruitment	#15	Strategies for achieving adequate participant enrolment to reach target sample size	3

**Methods:
Assignment of
interventions
(for controlled**

trials)

Allocation: sequence generation	#16a	Method of generating the allocation sequence (eg, computer-generated random numbers), and list of any factors for stratification. To reduce predictability of a random sequence, details of any planned restriction (eg, blocking) should be provided in a separate document that is unavailable to those who enrol participants or assign interventions	8
Allocation concealment mechanism	#16b	Mechanism of implementing the allocation sequence (eg, central telephone; sequentially numbered, opaque, sealed envelopes), describing any steps to conceal the sequence until interventions are assigned	8
Allocation: implementation	#16c	Who will generate the allocation sequence, who will enrol participants, and who will assign participants to interventions	6 and 8
Blinding (masking)	#17a	Who will be blinded after assignment to interventions (eg, trial participants, care providers, outcome assessors, data analysts), and how	8
Blinding (masking): emergency unblinding	#17b	If blinded, circumstances under which unblinding is permissible, and procedure for revealing a participant's allocated intervention during the trial	n/a

Methods: Data collection, management, and analysis

Data collection plan	#18a	Plans for assessment and collection of outcome, baseline, and other trial data, including any related processes to promote data quality (eg, duplicate measurements, training of assessors) and a description of study instruments (eg, questionnaires, laboratory tests) along with their reliability and validity, if known. Reference to where data collection forms can be found, if not in the protocol	13-14
Data collection plan: retention	#18b	Plans to promote participant retention and complete follow-up, including list of any outcome data to be collected for participants who discontinue or deviate from intervention protocols	13
Data management	#19	Plans for data entry, coding, security, and storage, including any related processes to promote data quality (eg, double data entry; range checks for data values). Reference to where details of data management procedures can be found, if not in the protocol	13-14
Statistics: outcomes	#20a	Statistical methods for analysing primary and secondary outcomes. Reference to where other details of the statistical analysis plan can be found, if not in the protocol	14
Statistics: additional analyses	#20b	Methods for any additional analyses (eg, subgroup and adjusted analyses)	14
Statistics: analysis population and	#20c	Definition of analysis population relating to	14

missing data

protocol non-adherence (eg, as randomised analysis), and any statistical methods to handle missing data (eg, multiple imputation)

**Methods:
Monitoring**

Data monitoring:
formal committee

[#21a](#)

Composition of data monitoring committee (DMC); summary of its role and reporting structure; statement of whether it is independent from the sponsor and competing interests; and reference to where further details about its charter can be found, if not in the protocol. Alternatively, an explanation of why a DMC is not needed

n/a

There are three reasons that we don't need DCM. Firstly, data collectors, intervention operators and evaluators in our program do not interfere with each other, ensuring that data is not leaked or contaminated. Secondly, all staff will undergo special training on the purpose and content of the trial, treatment strategies, and quality requirements before the trial. Monitors will check the participant adverse event table, the participants' dietary diaries and case report form once a week as well as the EA operation during the treatment period. Lastly, our sample size is too small to support DCM.

Data monitoring:
interim analysis

[#21b](#)

Description of any interim analyses and stopping guidelines, including who will have access to these interim results and make the final decision to terminate the trial

13

Harms

[#22](#)

Plans for collecting, assessing, reporting, and managing solicited and

13

		spontaneously reported adverse events and other unintended effects of trial interventions or trial conduct	
Auditing	#23	Frequency and procedures for auditing trial conduct, if any, and whether the process will be independent from investigators and the sponsor	n/a
Ethics and dissemination			
Research ethics approval	#24	Plans for seeking research ethics committee / institutional review board (REC / IRB) approval	4
Protocol amendments	#25	Plans for communicating important protocol modifications (eg, changes to eligibility criteria, outcomes, analyses) to relevant parties (eg, investigators, REC / IRBs, trial participants, trial registries, journals, regulators)	4
Consent or assent	#26a	Who will obtain informed consent or assent from potential trial participants or authorised surrogates, and how (see Item 32)	6
Consent or assent: ancillary studies	#26b	Additional consent provisions for collection and use of participant data and biological specimens in ancillary studies, if applicable	n/a
Confidentiality	#27	How personal information about potential and enrolled participants will be collected, shared, and maintained in order to protect confidentiality before, during, and after the trial	13-14

Declaration of interests	#28	Financial and other competing interests for principal investigators for the overall trial and each study site	16
Data access	#29	Statement of who will have access to the final trial dataset, and disclosure of contractual agreements that limit such access for investigators	15
Ancillary and post trial care	#30	Provisions, if any, for ancillary and post-trial care, and for compensation to those who suffer harm from trial participation	8 and 13
Dissemination policy: trial results	#31a	Plans for investigators and sponsor to communicate trial results to participants, healthcare professionals, the public, and other relevant groups (eg, via publication, reporting in results databases, or other data sharing arrangements), including any publication restrictions	14
Dissemination policy: authorship	#31b	Authorship eligibility guidelines and any intended use of professional writers	n/a
Dissemination policy: reproducible research	#31c	Plans, if any, for granting public access to the full protocol, participant-level dataset, and statistical code	n/a
Appendices			
Informed consent materials	#32	Model consent form and other related documentation given to participants and authorised surrogates	n/a
Biological specimens	#33	Plans for collection, laboratory evaluation, and storage of biological specimens for genetic or	n/a

molecular analysis in the
current trial and for future
use in ancillary studies, if
applicable

598 None The SPIRIT Explanation and Elaboration paper is distributed under the terms of
599 the Creative Commons Attribution License CC-BY-NC. This checklist can be
600 completed online using <https://www.goodreports.org/>, a tool made by the [EQUATOR](#)
601 [Network](#) in collaboration with [Penelope.ai](#)
602

