

# 1 Cohort profile: design, sociodemographic characteristics, chronic 2 disease risk factors, and baseline hypertension and diabetes care 3 cascades of the open, prospective Community-Based chronic disease 4 Care Lesotho (ComBaCaL) cohort

## 5 Authors and affiliations:

6 Felix Gerber<sup>1,2\*</sup>, Giuliana Sanchez-Samaniego<sup>1,2</sup>, Thesar Tahirsylaj<sup>1,2</sup>, Thabo Ishmael Lejone<sup>1,2</sup>, Tristan  
7 Lee<sup>1,2</sup>, Fabian Raeber<sup>1,2</sup>, Mamakhala Chitja<sup>3</sup>, Malebona Mathulise<sup>3</sup>, Thuso Kabi<sup>3</sup>, Mosoetsi Mokaean<sup>3</sup>,  
8 Malehloa Maphenchane<sup>3</sup>, Manthabiseng Molulela<sup>3</sup>, Makhebe Khomolishoele<sup>3</sup>, Mota Mota<sup>3</sup>, Sesale  
9 Masike<sup>3</sup>, Matumaole Bane<sup>3</sup>, Mamoronts'ane Pauline Sematle<sup>3</sup>, Retselisitsoe Makabateng<sup>3</sup>, Ravi Gupta<sup>3</sup>,  
10 Irene Ayakaka<sup>3</sup>, Madavida Mphunyane<sup>4</sup>, Lebohng Sao<sup>4</sup>, Mosa Tlahali<sup>4</sup>, Sejojo Phaaroo<sup>4</sup>, Malitaba  
11 Litaba<sup>4</sup>, Dave Brian Basler<sup>1,5</sup>, Kevin Kindler<sup>1,5</sup>, Pauline Grimm<sup>6</sup>, Eleonora Seelig<sup>2,7</sup>, Thilo Burkard<sup>2,8,9</sup>,  
12 Matthias Briel<sup>1,2,10</sup>, Frédérique Chammartin<sup>1,2</sup>, Alain Amstutz<sup>1,2,11,12¶</sup>, Niklaus Daniel Labhardt<sup>1,2¶\*</sup>

13 <sup>1</sup>Division of Clinical Epidemiology, Department of Clinical Research, University Hospital Basel, Basel, Switzerland

14 <sup>2</sup> University of Basel, Basel, Switzerland

15 <sup>3</sup> SolidarMed Lesotho, Maseru, Lesotho

16 <sup>4</sup> Ministry of Health Lesotho, Maseru, Lesotho

17 <sup>5</sup> Faculty of Business, Economics and Informatics, University of Zurich, Zurich, Switzerland

18 <sup>6</sup> SolidarMed Switzerland, Lucerne, Switzerland

19 <sup>7</sup> Clinic of Endocrinology, Diabetology and Metabolism, University Hospital Basel, Basel, Switzerland

20 <sup>8</sup> Medical Outpatient Department and Hypertension Clinic, University Hospital Basel, Basel, Switzerland

21 <sup>9</sup> Department of Cardiology, University Hospital Basel, Basel, Switzerland

22 <sup>10</sup> Department of Health Research Methods, Evidence, and Impact, McMaster University, Hamilton, Canada

23 <sup>11</sup> Oslo Center for Biostatistics and Epidemiology, Oslo University Hospital, University of Oslo, Oslo, Norway

24 <sup>12</sup> Bristol Medical School, University of Bristol, Bristol, United Kingdom

25 \* Corresponding authors

26 ¶ These authors contributed equally to this work and share last-authorship

27 **Correspondence:** Niklaus D. Labhardt, Division of Clinical Epidemiology, University Hospital Basel,  
28 Totengässlein 3, 4051 Basel, Switzerland, [niklaus.labhardt@usb.ch](mailto:niklaus.labhardt@usb.ch)

29 Felix Gerber, Division of Clinical Epidemiology, University Hospital Basel, Totengässlein 3, 4051 Basel,  
30 Switzerland, [felix.gerber@usb.ch](mailto:felix.gerber@usb.ch)

31 **Key words:** chronic diseases – non-communicable disease – arterial hypertension – diabetes mellitus –  
32 HIV – epidemiology, public health – community-based care – Community Health Workers – clinical  
33 decision support

34 **Word count:**

35 **Abstract:** 347 words **Main text:** 10'505 words

NOTE: This preprint reports new research that has not been certified by peer review and should not be used to guide clinical practice.

## 36 Abstract

37 **Purpose:** The open, prospective Community-Based chronic Care Lesotho (ComBaCaL) cohort is the first  
38 study to comprehensively investigate socioeconomic indicators, common chronic diseases and their risk  
39 factors in a remote rural setting in Lesotho. It serves as a platform for implementing nested trials using  
40 the Trials within Cohorts (TwICs) design to assess community-based chronic care interventions. Here,  
41 we present the cohort's sociodemographic and chronic disease risk factor profile, including self-  
42 reported HIV prevalence and hypertension and diabetes care cascades.

43 **Participants:** Since February 2023, Community Health Worker (CHWs) supported by a clinical decision  
44 support and data collection application, have enrolled inhabitants from 103 randomly selected rural  
45 villages in Butha-Buthe and Mokhotlong districts in North-East Lesotho. As of May 31, 2024, the cohort  
46 includes 5'008 households with 14'735 participants (55% female, median age 19 years). The cohort's  
47 socioeconomic status is low with an International Wealth Index of 26, a monthly household income of  
48 42.4 USD and low levels of formal education. Among the 7'917 adult participants, 42.5% are overweight  
49 or obese, with higher rates among women, and 33.1% smoke tobacco, with higher rates among men.  
50 Self-reported HIV prevalence is 15.1% with a 98.4% treatment rate. Hypertension prevalence is 17%  
51 with a 56% control rate and diabetes prevalence is 4% with a 39% control rate.

52 **Findings to date:** The cohort's low socioeconomic status is linked to multiple health risks including  
53 insufficient access to clean energy, essential healthcare services, adequate sanitary facilities and secure  
54 food supply. Besides the expected high HIV prevalence, we found significant hypertension, diabetes and  
55 cardiovascular risk factor prevalences. While treatment and control rates for diabetes and hypertension  
56 are higher than in similar settings, they remain below global targets.

57 **Future plans:** Ongoing cluster-randomized TwICs, which will be completed in 2025, are assessing the  
58 effectiveness of community-based, CHW-led care interventions for diabetes and hypertension. CHWs  
59 will continue to closely monitor the cohort and integrate additional measurements such as HIV testing.  
60 This will provide further insights into the dynamics and interactions of chronic diseases and inform the  
61 development of future nested trials on innovative community-based prevention and care interventions.

62 **Registration:** NCT05596773

## 63 Strengths and limitations

- 64 - **Comprehensive Data Collection:** The ComBaCaL cohort offers comprehensive data on  
65 sociodemographics, chronic disease risk factors, and hypertension and diabetes care cascades  
66 within a large, representative sample of the rural population in Lesotho.
- 67 - **Community-Based Approach:** Data is captured by local Community Health Workers residing in  
68 the study villages using a tailored clinical decision support and data collection application. This  
69 approach allows for continuous data collection, remote monitoring by study staff, and data  
70 verification, ensuring nearly complete village enrolment and high data quality.
- 71 - **Efficient study design:** The cohort utilizes the Trials within Cohorts (TwICs) design, which allows  
72 for the efficient implementation of multiple randomized nested trials to assess the effectiveness  
73 of innovative health interventions.
- 74 - **Reliance on self-reported data:** Assessments other than hypertension and diabetes screening  
75 outcomes rely on self-reported data, which may have limited correlation with objective  
76 assessments.
- 77 - **Limitations in data scope:** Clinical data on chronic conditions other than hypertension and  
78 diabetes remain limited and anthropometric and behavioural risk factor data for children has  
79 not yet been collected.

## 80 Introduction

81 Globally, chronic non-communicable diseases (NCDs) are the leading cause of death and disability with  
82 a particularly high burden in low- and middle-income countries [1]. In Africa, the NCD burden has risen  
83 significantly over the past two decades, driven by the increasing prevalence of lifestyle risk factors such  
84 as unhealthy diet, smoking, insufficient physical activity, obesity, and exposure to air pollution [2,3].  
85 Concurrently, the burden associated with human immunodeficiency virus (HIV), a main cause of  
86 morbidity and mortality in the region, is decreasing due to the widespread roll-out of effective  
87 antiretroviral therapy. As a result, projections indicate that by 2030, NCDs will surpass communicable,  
88 maternal, neonatal, and nutritional diseases combined as the leading cause of mortality in Southern  
89 Africa [4]. This epidemiological transition signifies a critical need for enhanced chronic care services in  
90 the region, driven by both the rising NCD prevalence and the transformation of HIV into a manageable  
91 chronic illness [5,6]. To meet this challenge, Southern African health systems must undergo substantial  
92 transformation, necessitating concerted research efforts to facilitate this process [7]. Moreover, there  
93 are intricate social and biomedical interactions between HIV and NCDs and both are mediated by shared  
94 risk factors which are closely linked to socioeconomic development highlighting the complexities of  
95 effective responses [7–9]. However, epidemiological data on chronic diseases, particularly in rural low-  
96 resources settings, remains scarce, with only very few cohort studies or trials examining HIV, NCDs, and  
97 socioeconomic indicators together [10]. Additionally, further health systems research is essential to  
98 explore how integrated chronic care can be developed within resilient health systems capable of  
99 concurrently addressing NCDs and HIV [7,9,11].

100 A promising approach to increase the chronic care capacities of health systems with limited professional  
101 workforce and financial resources is the decentralization of healthcare services with task-shifting to lay  
102 Community Health Workers (CHWs) [12–16]. The strategic integration of community-based healthcare  
103 services in existing health systems is supported by the World Health Organization (WHO), and the United  
104 Nations Programme on HIV/AIDS (UNAIDS) is promoting scale-up of CHW-delivered services in Africa  
105 [17,18]. CHWs bring services closer to the community, reduce access barriers such as transport costs,  
106 travel time and low awareness, and may offer more equitable and less stigmatized access to health  
107 services than facility-based care. In addition, CHW systems have the potential to strengthen civil society  
108 and create job opportunities in rural areas [17].

109 Although various modelling studies suggest that integrated community-based chronic care may be cost-  
110 effective in Southern Africa, robust evidence around community HIV/NCD delivery platforms and their  
111 key enablers is missing [19–23]. Evidence from implementation research in resource-limited settings on  
112 primary healthcare in rural areas including pharmacological interventions is scarce [24]. For southern  
113 Africa, no evidence on the clinical effectiveness of community-based NCD or integrated chronic care  
114 models is available [21,22].

115 Lesotho is an example of an African lower-middle-income country where the burden of NCDs is rapidly  
116 increasing while HIV prevalence remains high and the population of people living with HIV is ageing  
117 [25,26]. The Community-Based chronic Care Lesotho (ComBaCaL) cohort study provides detailed  
118 socioeconomic information and epidemiological data on the two most common chronic NCDs, arterial  
119 hypertension and diabetes, and on behavioral risk factors in rural Lesotho, a remote setting with high  
120 HIV prevalence. Furthermore, it will serve as a platform for the assessment of novel community-based  
121 chronic care models in nested trials using the Trials within cohorts (TwICs) design, that will generate  
122 evidence about how CHWs could support the development of a resilient health system able to provide  
123 widespread equitable access to chronic care.

124 Here we present the baseline characteristics of the ComBaCaL cohort population including  
125 socioeconomic characteristics, lifestyle risk factors, and diabetes, hypertension and self-reported HIV

126 prevalence, and treatment status. These findings contribute significantly to our understanding of the  
127 health needs in rural Lesotho and inform the development of effective, community-based chronic care  
128 interventions.

## 129 Cohort description

### 130 Setting

131 The ComBaCaL cohort study is situated in Butha-Buthe and Mokhotlong districts in north-east Lesotho,  
132 a landlocked, mountainous country in southern Africa with an estimated population of about 2.3 million  
133 inhabitants [27]. The majority of the population lives in rural areas with difficult access to healthcare  
134 facilities [28]. Both districts feature one central town with surrounding rural areas with remote villages  
135 and poor transport infrastructure. In the two districts combined, three physician-led secondary hospitals  
136 and 19 nurse-led primary-level health centres serve a population of approximately 220'000 people [29].

137 At 19%, Lesotho has the second-highest adult HIV prevalence globally [30]. A recent population-based  
138 survey in Butha-Buthe and Mokhotlong found adult prevalences of 21.6% and 5.3% for arterial  
139 hypertension and diabetes [25] with suboptimal treatment and control rates and high rates of end-  
140 organ disease [31,32].

141 As in many other African countries, the Lesotho health system faces significant funding challenges [33].  
142 The country faces a shortage of medical professionals, with just 20.7 doctors and nurses per 10'000  
143 people. This is less than 50% of the WHO defined threshold deemed necessary to make progress towards  
144 universal health coverage [34]. Nevertheless, Lesotho has managed to reduce HIV transmission and  
145 mortality considerably over the last years. This success is largely attributed to a decentralized HIV testing  
146 and care system that effectively leverages lower cadre healthcare workers and CHWs, called Village  
147 Health Workers in Lesotho, to deliver accessible and equitable services for the urban and rural  
148 population alike. The integration of lay CHWs into the health system structures has been adopted in  
149 Lesotho since 1978 [35,36]. CHWs are considered lay volunteers in Lesotho but they receive a monthly  
150 government stipend of roughly 45 USD [37]. Currently, CHWs the community-based health care delivery  
151 is focused on HIV and maternal and neonatal diseases. NCD care is only provided at the health facilities  
152 while the high prevalence of NCDs and relevant awareness, diagnosis and treatment gaps underscore  
153 the need to develop more accessible NCD service models [25,31,32]. The Lesotho CHW program  
154 represents a meaningful starting point for implementation research on community-based chronic care  
155 models as it is representative for the health systems in many other African countries, where lay worker-  
156 led care has a similar standing.

### 157 Objectives and Design

158 The ComBaCaL cohort is a prospective research and service delivery platform, with the aim to assess the  
159 prevalence, burden, and risk factors of chronic diseases, especially arterial hypertension, type 2  
160 diabetes, and HIV in rural Lesotho. In addition, the ComBaCaL cohort serves as a platform for the  
161 assessment of community-based, CHW-led chronic care interventions in nested randomized trials using  
162 a TwiCs approach [38–40]. TwiCs is a pragmatic randomized design [41] with the potential to overcome  
163 some challenges of traditional randomized trials like slow recruitment, limited external validity,  
164 burdensome consent procedures, or undesirable study-related behaviour of participants  
165 ('disappointment effects') [39,40,42]. At enrolment, participants not only consent for regular cohort  
166 data collection, but also for potential randomization into future nested trials assessing low-risk  
167 interventions. If randomized to the intervention arm of a trial, participants are offered the intervention  
168 and have then the option to accept or decline it. If randomized to the control arm of the trial,

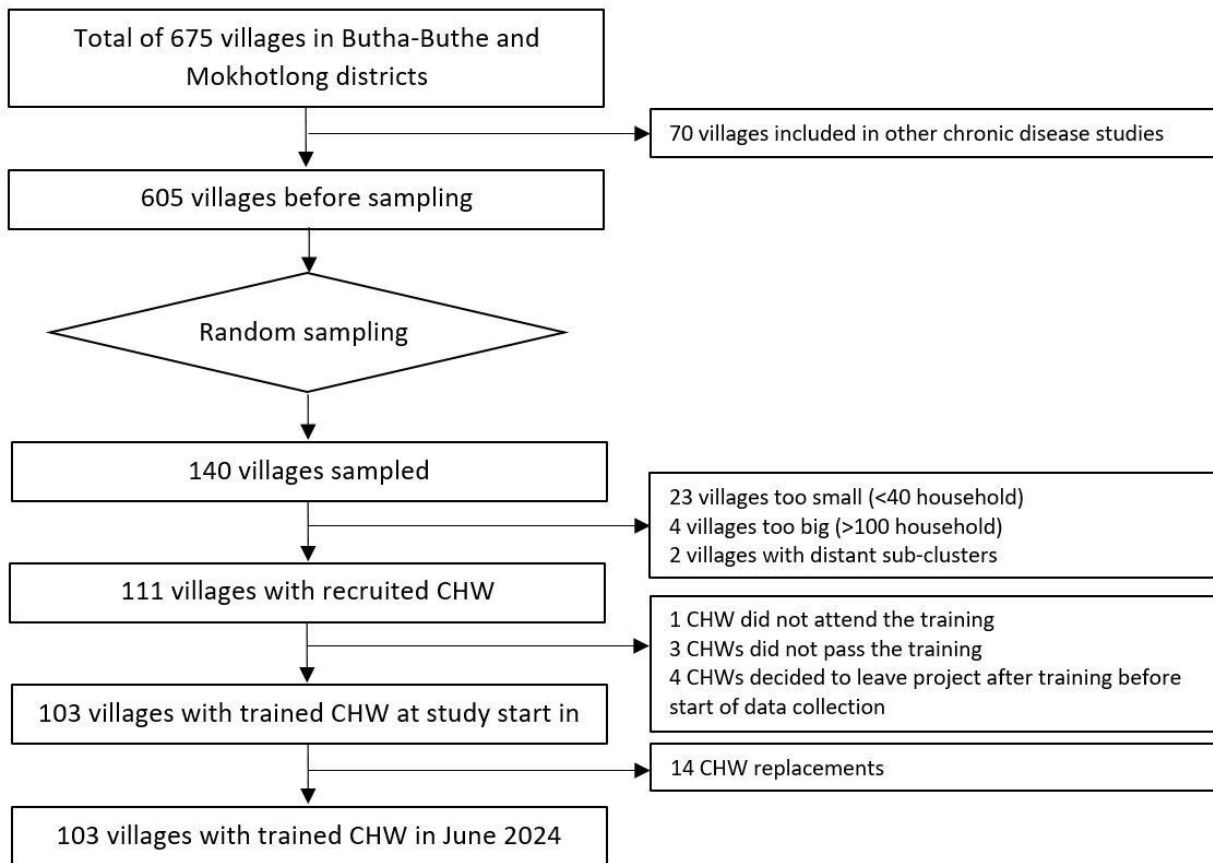
169 participants are not contacted but continue usual care in the cohort [43]. In the ComBaCaL cohort, three  
170 cluster-randomized TwiCs assessing CHW-led care for hypertension and diabetes are ongoing at the  
171 time of submission and expected to be completed in 2025 [44,45].

## 172 **Sampling of villages and recruitment of CHWs**

173 Based on the 2016 Lesotho Population and Housing Census [29], a total of 675 village-clusters were  
174 identified in the rural areas of Mokhotlong (321) and Butha-Buthe (354) districts. A few villages located  
175 in neighbouring districts close to district borders and within the catchment areas of Mokhotlong or  
176 Butha-Buthe health facilities were also included and assigned to Mokhotlong or Butha-Buthe district  
177 depending on the location of the associated health facility. Out of the 675 villages, 70 (35 per district)  
178 were excluded because they were involved in other chronic disease related studies. Out of the 605  
179 remaining villages, 140 (70 per district) were randomly sampled, stratified by district and access to  
180 health facility (easy versus difficult access, defined as needing to cross a mountain or river or travel >10  
181 km to the nearest health facility), by a statistician not involved in the study. The 140 villages were  
182 assessed for eligibility applying the following criteria: estimated village size of 40 to 100 households,  
183 geographic distribution of households that allows coverage by one CHW, village consent obtained from  
184 village chief, and possibility to identify or recruit a CHW from the village population. The upper limit of  
185 household numbers was chosen to ensure each study village could be served by one CHW. The lower  
186 limit of household numbers was chosen to ensure a reasonable minimal workload per CHW and to  
187 minimize the number of empty clusters for nested trials enrolling disease-specific subpopulations. The  
188 village eligibility assessment was conducted after the random sampling because of its operational  
189 complexities requiring physical visits of the study team and consent by the village chiefs, which was not  
190 feasible to conduct for the entire sampling pool of 605 villages. During the assessment, 29 villages were  
191 excluded (23 had less than 40 households, 4 had more than 100 households, 2 consisted of smaller sub-  
192 clusters that were too far apart to be served by one CHW). See figure 1 for the village selection flow.

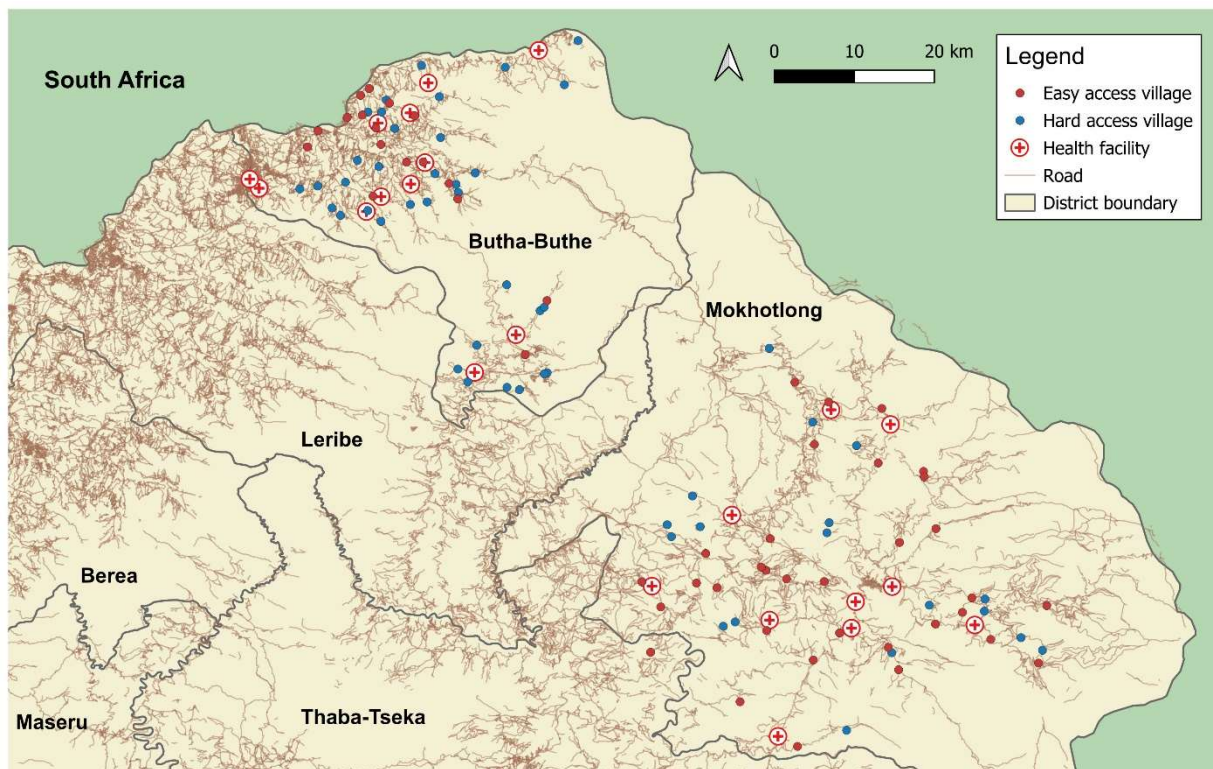
193 Criteria for CHW selection were in line with the Lesotho Village Health Program Policy [37] and included  
194 the following: primary residence in the village, record of trustworthiness and ability to maintain  
195 confidentiality (according to village chief), aged between 20 and 50 years, being able to provide written  
196 reports and to do basic mathematical calculations, having at least an educational level equivalent to a  
197 high school leaving certificate (Junior Certificate), having good social and communication skills, and  
198 being able to speak, understand and write in English. In villages where an existing CHW fulfilled the  
199 criteria, he/she was invited to participate in the project. In villages where there was no CHW or where  
200 the existing CHW did not fulfil the criteria, a new CHW was elected by the village population during a  
201 community gathering after a pre-selection of candidates by the village chief, the study team and the  
202 district health management team of the Ministry of Health.

203 CHWs from 111 villages meeting the eligibility criteria were invited to an initial 10-day training on  
204 consent procedures, recognition and reporting of clinical events, and data collection. 103 CHWs passed  
205 the training and started the participant enrolment in their villages in February 2023 (1 did not attend  
206 the training, 3 did not pass the training, and 4 decided not to participate after the training). Villages are  
207 distributed in the rural catchment areas of all 22 health facilities in the two districts (see figure 2). One  
208 Mokhotlong village is located in Thaba-Tseka district close to the district border but falls under the  
209 catchment area of a Mokhotlong health centre. Between February 2023 and June 2024, CHWs in 14  
210 villages had to be replaced (5 got a permanent job outside the village, 1 went to university, 3 got elected  
211 as local councillors, 5 were unable to perform the tasks due to lack of time, motivation or skills). If CHWs  
212 needed to be replaced, a new CHW was elected by the community in collaboration with district health  
213 authorities and trained to ensure that service delivery and data collection in the villages remained  
214 uninterrupted.



215

216 *Figure 1 Selection of villages and CHWs. CHW: Community Health Worker*



217

218 *Figure 2 Location of the study villages and health facilities in Butha-Buthe and Mokhotlong districts in Lesotho. Hard access*  
 219 *village: Needing to cross a mountain or river or travel >10 km to the nearest health facility. Map was produced by TL using QGIS*  
 220 *v3.34 [46].*

## 221 Eligibility, consent and enrolment

222 Oral consent from the village chiefs was obtained during village eligibility assessment prior to the CHW  
223 training with all approached village chiefs giving consent for their village to participate. All inhabitants  
224 of the selected villages independent of age or any other factors are eligible for participation in the  
225 ComBaCaL cohort.

226 Each cohort village is managed by one CHW, who lives in the village and is supported by a tablet-based  
227 application for consent documentation, data collection, and clinical decision support (ComBaCaL app)  
228 [47,48]. For participant enrolment, CHWs visit all households in their villages. Prior to individual  
229 enrolment, households are registered, and oral household consent asked from the household head or  
230 a representative.

231 After obtaining household consent, present household members are asked for individual written  
232 consent using a tablet-based consent application. The number of absent household members is  
233 registered and the CHW returns to households with absent members in the next days to complete  
234 recruitment. Based on participants' characteristics (age, literacy, need for a guardian), the consent  
235 application displays appropriate simplified study information and allows for electronic signature on the  
236 informed consent form. Illiterate participants confirm informed consent by drawing a cross in the  
237 electronic signature field, countersigned by an impartial witness. For adolescents aged 10 to 17 years,  
238 written consent is sought from a guardian together with written assent from the adolescent. For  
239 children below 10 years, written consent is sought from a guardian without assent from the child. Signed  
240 consent forms are uploaded in the study database of the ComBaCaL app and checked for correctness  
241 and completeness by the study team remotely and re-consent tasks are triggered via the ComBaCaL app  
242 in case of errors.

243 Following the French consent pattern of the TwiCs approach [40], participants consent to being  
244 randomized as part of future TwiCs together with consent for ComBaCaL cohort data collection. The  
245 consent form is available on [clinicaltrials.gov](https://clinicaltrials.gov) (NCT05596773). Consent can be withdrawn any time on  
246 individual or household level. Pseudo-anonymized data collected until the time of withdrawal is retained  
247 in the database.

248 The ComBaCaL cohort is an open cohort and new inhabitants of the selected villages are approached  
249 for consent as soon as the CHW becomes aware of the new person moving into the village or being born.  
250 After death or emigration, the participant is removed from the active cohort population while the  
251 collected data remains in the database. Participants who emigrated, and then move back into the village  
252 are reactivated and continue regular follow-up. The presence of the CHWs in the villages and the  
253 continuous enrolment of new participants, deactivation of leaving participants, and reactivation of  
254 returning participants ensures that the cohort population is constantly aligned with the actual number  
255 of consenting people staying in the study villages.

256

## 257 **Measurements**

258 All data are collected by CHWs during household visits using the tailored ComBaCaL application that  
259 provides algorithmic clinical decision support and serves as data collection tool. In addition to the initial  
260 10-day training on consent procedures, recognition of clinical alarm signs and symptoms and relevant  
261 skills for data collection, CHWs were trained on diabetes and hypertension screening and diagnosis  
262 separately during two additional 3-day trainings.

263 For consenting households, household level data including socioeconomic indicators and GPS  
264 coordinates are collected. Household wealth is assessed using the Demographic and Health Survey  
265 (DHS) Program wealth index questions for Lesotho [49]. The DHS wealth index is a 15-item questionnaire  
266 that assesses household assets and utility services, including country-specific assets that are viewed as  
267 indicators of economic status [50]. The DHS questionnaire is used to calculate the International Wealth  
268 Index (IWI). The IWI, an asset-based index, facilitates comparisons of household economic status across  
269 low- and middle-income countries. It operates on a scale from 0 to 100, where 0 represents the lowest  
270 housing quality and absence of essential consumer durables, while 100 signifies the highest housing  
271 quality and ownership of all relevant consumer durables [51]. Previous research has demonstrated  
272 robust correlation between the IWI and other health and socioeconomic indicators [51,52].

273 Food security is assessed using questions from the Household Food Insecurity Access Scale (HFIAS) [53].  
274 Only six out of the nine questions included in the full HFIAS are asked. Therefore, the HFIAS score is not  
275 calculated, but food insecurity categories based on the highest-ranked answer to the available six  
276 questions are presented [53]. Furthermore, access to healthcare is assessed using validated questions  
277 about whether household members could not access required healthcare services and medications in  
278 the last 12 months [54]. For all participants, age, sex, current or previous tuberculosis diagnosis, and  
279 self-reported HIV status and intake of antiretroviral therapy for those reporting to live with HIV are  
280 collected. For adolescents (10-17 years) and adults ( $\geq 18$  years), tobacco and alcohol consumption, salt,  
281 fruit and vegetable consumption using the WHO STEPS instrument [55], consumption of unhealthy food  
282 items, beverages and meat using a food frequency questionnaire adapted from an assessment tool for  
283 obesity used in South Africa [56], physical activity using the validated International Physical Activity  
284 Questionnaire Short Form (IPAQ-SF) [57], weight, height, and abdominal circumference are collected.  
285 For the assessment of unhealthy food items and beverages consumption, the numbers of days per week  
286 on which the included items were consumed are asked. The food items included are the most frequently  
287 consumed unhealthy food items based on the judgement of the local study team members and are not  
288 validated. For analysis, the items are categorized in sweet items (candy, chocolate and biscuits), fried  
289 high-carbohydrate items (crisps, fries, fat cakes (traditional fried bread buns)) and sweet beverages  
290 (fruit juices, carbonated soft drinks). For each category the highest frequency of consumption of any of  
291 the included items is reported. For analysis of physical activity, we calculate the metabolic equivalent of  
292 task (MET) minutes per week and categorize in low, moderate and high physical activity according to  
293 the IPAQ scoring protocol [57]. Only age, sex and overall number of children and adolescents are  
294 included in this manuscript as part of the ComBaCaL cohort overview, while further data on children  
295 and adolescents will be published separately.

296 For adults aged 18 years and above, awareness and history of hypertension and diabetes, diagnosis of  
297 relevant chronic diseases and complications (myocardial infarction, stroke, heart failure, chronic kidney  
298 disease, vision impairment, peripheral arterial disease, peripheral neuropathy, asthma, chronic  
299 obstructive pulmonary disease (COPD), diabetic foot syndrome), and current medication intake are  
300 documented. For the documentation of clinical information, self-reports and the participants' personal  
301 health booklets are used. CHWs are guided during the data collection by questions and additional  
302 explanatory notes displayed in the ComBaCaL app in English and Sesotho, the local language.



303 Adult participants aged 18 years or older are screened for hypertension according to the diagnostic  
304 algorithm of the Lesotho Standard Treatment Guidelines [58]. Blood pressure measurements are  
305 conducted using automated machines (Omron M3 Comfort [HEM7131-E] [59]). Measurements are  
306 taken after determination of the correct cuff size in a sitting position after five minutes of rest with feet  
307 on the floor, the arm supported without talking or moving during the measurement. At the first visit,  
308 the reference arm is determined by measuring blood pressure on both arms. The arm with higher  
309 systolic blood pressure is identified as reference arm and used for all subsequent measurements. The  
310 blood pressure value is calculated as the mean of the last two out of three consecutive measurements  
311 at intervals of one minute. For the diagnosis of hypertension, two elevated measurements in the range  
312 of 140-179/90-109 mmHg on two different days are required or two measurements of 180/110 mmHg  
313 or higher on the same day, at least 30 minutes apart. Participants reporting intake of antihypertensive  
314 medication or newly diagnosed according to the diagnostic criteria are considered as having  
315 hypertension. Hypertension diagnosis awareness is defined as reporting having been previously  
316 diagnosed with hypertension. Hypertension treatment control is defined as having a blood pressure  
317 below 140/90 mmHg.

318 Adult participants aged 40 years or older or having a BMI of 25 kg/m<sup>2</sup> or higher or reporting intake of  
319 antidiabetic medication are screened for diabetes according to the diagnostic algorithm of the Lesotho  
320 Standard Treatment Guidelines [58] using handheld glucometers for capillary blood sugar  
321 measurements. Diagnostic criteria include a random blood sugar of  $\geq 11.1$  mmol/l or a fasting blood  
322 sugar  $\geq 7.0$  mmol/l either in presence of cardinal diabetes symptoms (polyuria, polydipsia, and weight  
323 loss) or after previously elevated blood sugar (fasting or random blood sugar  $\geq 5.6$  mmol/l) on a different  
324 day. Participants reporting intake of antidiabetic medication or newly diagnosed according to the  
325 diagnostic criteria are considered as having diabetes. For people diagnosed with diabetes based on  
326 blood glucose values, glycated haemoglobin (HbA1c) is measured. Diabetes diagnosis awareness is  
327 defined as having been previously diagnosed with diabetes. Diabetes treatment control is defined as  
328 having a fasting blood glucose below 7.0 mmol/l or a HbA1c below 6.5% if fasting blood glucose is  
329 missing.

### 330 **Data management and analysis**

331 All CHWs received a password-protected tablet with the ComBaCaL app installed. The ComBaCaL app is  
332 based on the Community Health Toolkit Core Framework, a widely used, offline-first, open-source  
333 software toolkit designed for community health systems [60].

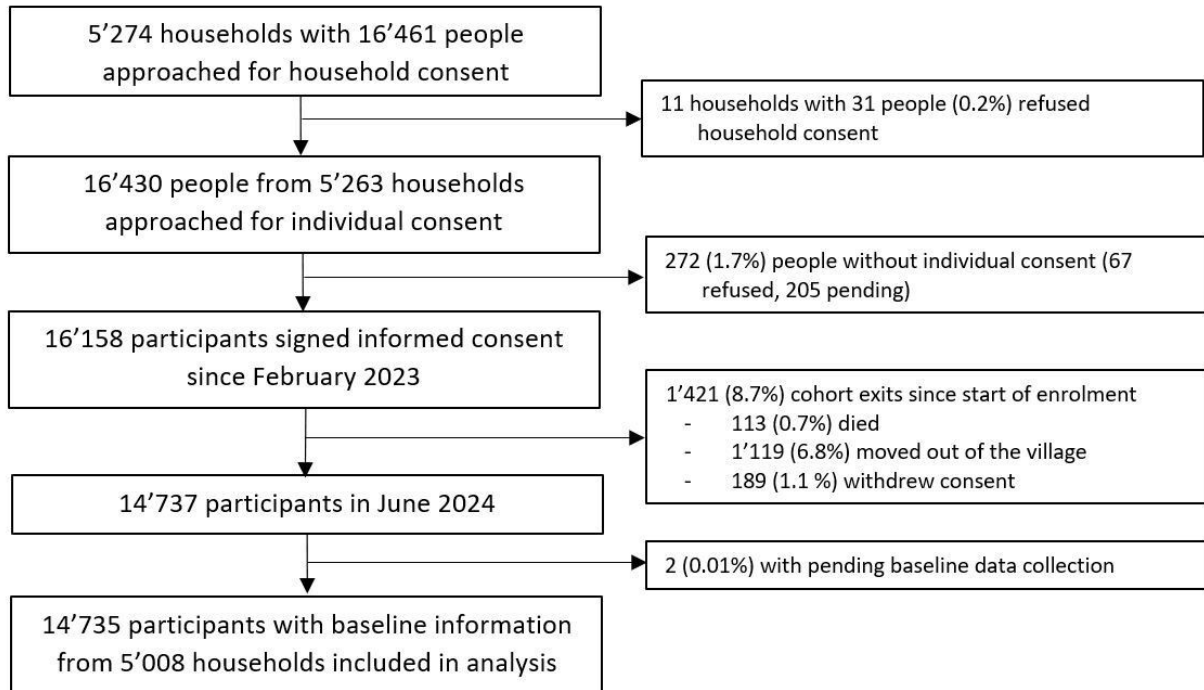
334 Data are collected in real time on the tablets and synchronized regularly to a secure server hosted at  
335 the University Hospital Basel, Switzerland. All shared data exports are pseudonymized. Data are  
336 continuously monitored locally by the CHW supervisors and centrally by the data management team of  
337 the University Hospital Basel with CHW supervisors contacting the CHWs through phone calls or field  
338 visits in case of potential data errors for verification.

339 Descriptive statistics are used to present participant characteristics. Missing data are reported as  
340 missing in all tables. All analyses are done using R core team, version 4.3.1. 2023 [61].

### 341 **Participants' characteristics**

342 Since February 2023, in the 103 study villages, 5'274 households with 16'461 people were approached  
343 for household consent to participate in the ComBaCaL cohort. Through repeated home visits by the  
344 CHWs, nearly all households of the 103 villages were reached. For 11 households (0.2%) with 31 people,  
345 household consent was refused. 16'430 individuals from 5'263 households were approached for

346 individual consent. 16'158 participants (98.3% individual consent rate) consented to participation. Of  
347 those, up to June 2024, 189 withdrew consent (1.1%), 113 died (0.7%), 1'119 moved out of the village  
348 (8.7%), and 2 did not yet have baseline data collected (0.03%). Overall, in June 2024, the ComBaCaL  
349 cohort comprised 14'735 active participants with available baseline information from 5'008 households  
350 (see figure 3).



351

352 *Figure 3 Overview of consent, enrolment, and retention of households and participants in the ComBaCaL cohort.*

353 Number of participants per village range from 58 to 302 with a median of 140.

Characteristic	N = 5,008 <sup>1</sup>
<b>Number of household members, median (IQR)</b>	3 (2, 4)
<b>International Wealth Index, median (IQR)</b>	26 (17, 36)
<b>Monthly household income (USD)<sup>1</sup>, median (IQR)</b>	42.4 (18.6, 63.6)
Unknown / refused to say	7
<b>Main source of household income</b>	
Salary / wages <sup>2</sup>	1,289 (25.7%)
Informal business (e.g. street vendor)	1,109 (22.1%)
Formal business (e.g. retail trade)	37 (0.7%)
Farming	1,213 (24.2%)
Rentals/interest	61 (1.2%)
Grants/pension	1,109 (22.1%)
Unknown / refused to say	190 (3.8%)
<b>Household Food Insecurity Access category</b>	
Food secure	2,385 (47.6%)
Mildly food insecure	167 (3.3%)
Moderately food insecure	965 (19.3%)
Severely food insecure	1,489 (29.7%)
Unknown / refused to say	2
<b>Geographically hard access to health facility<sup>3</sup></b>	2,548 (50.9%)
<b>Difficulties accessing health care<sup>4</sup></b>	1,120 (22.4%)
<b>Difficulties accessing medications<sup>5</sup></b>	821 (16.4%)
<b>Drinking water</b>	
Running (piped) water inside dwelling or yard	79 (1.6%)
Neighbour's tap	43 (0.9%)
Public / community tap	4,075 (81.4%)
Borehole	548 (10.9%)
Dam / river / rainwater	257 (5.1%)
Unknown / refused to say	6 (0.1%)
<b>Toilet</b>	
Flush toilet	33 (0.6%)
Ventilated improved pit latrine	628 (12.5%)
Non-improved pit latrine	2,381 (47.6%)
None / bush / field	1,959 (39.1%)
Unknown / refused to say	7 (0.1%)
<b>Electricity available</b>	663 (13.2%)
<b>Cooking fuel</b>	
Wood	4,210 (84.1%)
Animal dung / straw / grass	302 (6.0%)
Gas	237 (4.8%)
Paraffin	147 (2.9%)
Electricity	106 (2.1%)
Other / unknown / refused to say	6 (0.1%)
<b>Heating fuel</b>	
Wood	3,198 (63.9%)
Animal dung / crop waste	1,321 (26.4%)
Gas	41 (0.8%)
Paraffin	322 (6.4%)
Electricity	68 (1.4%)
Other / unknown / refused to say	57 (1.2%)
<b>People per bedroom</b>	
1-2	2,527 (50.5%)
3-4	1,880 (37.5%)
5 or more	599 (12%)
Unknown / refused to say	2 (<0.1%)

Characteristic	N = 5,008 <sup>1</sup>
<b>Wall material</b>	
Mud	3,099 (61.9%)
Mud and cement	1,042 (20.8%)
Corrugated iron	230 (4.6%)
Bare brick	245 (4.9%)
Finished/plaster	348 (6.9%)
Other / unknown / refused to say	44 (0.8%)
<b>Roof material</b>	
Natural	3,099 (61.9%)
Rudimentary (wood planks, cardboard)	242 (4.8%)
Finished (metal, wood, tiles)	1,548 (30.9%)
Other / unknown / refused to say	119 (2.4%)
<b>Agricultural land ownership</b>	3,127 (62.4%)
<sup>1</sup> Collected in Lesotho Loti, converted using the bilateral conversion rate on May 31, 2024 [62]	
<sup>2</sup> Salaries and wages of household members or other people (i.e. of family members living outside the household)	
<sup>3</sup> Defined as needing to cross a mountain or river or travel >10 km to the nearest health facility.	
<sup>4</sup> Defined as at least one household member not being able to consult a healthcare provider despite needing it during the last 12 months.	
<sup>5</sup> Defined as at least one household member experiencing difficulties obtaining required medication.	

Table 1 Household level socioeconomic indicators. IQR: Interquartile range.

355 Table 1 provides an overview of socioeconomic indicators at household level, the complete household-  
356 level data is available in the supplement. The median asset-based IWI score and monetary monthly  
357 household income are 26 (IQR 17, 36) and 42.4 USD (IQR 18.6, 63.6 USD), respectively. In a typical  
358 ComBaCaL cohort household, there are three people living (IQR 2, 4) in one or two bedrooms. Most  
359 houses are made of mud walls (61.9%) with a natural straw roof (61.9%). The main source of drinking  
360 water is a community tap (81.4%), and toilet facilities mostly consist of pit latrines (47.6%) while 39.1%  
361 of households do not have a toilet and defecate in fields or bushes. Only 13.2% of households have  
362 access to electricity. The most widely used cooking and heating fuels are wood (84.1% for cooking and  
363 63.9% for heating) and animal dung (6.0% for cooking and 26.4% for heating). Roughly half of  
364 households (50.9%) have geographically difficult access to a health facility as per the definition of living  
365 more than ten kilometres away from the closest health facility or having to cross a river or a mountain  
366 to reach the facility. 22.4% of households reported that at least one member was unable to access  
367 healthcare services in the past 12 months despite needing them, while 16.4% faced difficulties obtaining  
368 required medications. The main reasons stated for the difficulties in accessing healthcare services were  
369 lack of money or difficulties to get transportation. 62.4% of households own agricultural land and for  
370 24.2% of households, farming is the main source of income.

Characteristic	Female, n (%), 8064 (55%)	Male, n (%), 6671 (45%)	Total, n (%), 14735 (100%)
<b>Age (years), median (IQR)</b>	21 (10, 45)	17 (8, 39)	19 (9, 42)
<10 years	1,936 (24.0%)	2,006 (30.1%)	3,942 (26.8%)
10-17 years	1,568 (19.4%)	1,351 (20.3%)	2,919 (19.8%)
18-39 years	2,148 (26.6%)	1,662 (24.9%)	3,810 (25.9%)
40-64 years	1,529 (19.0%)	1,185 (17.8%)	2,714 (18.4%)
≥65 years	883 (10.9%)	467 (7.0%)	1,350 (9.2%)
<b>District</b>			
Butha-Buthe	4,002 (49.6%)	3,393 (50.9%)	7,395 (50.2%)
Mokhotlong	4,062 (50.4%)	3,278 (49.1%)	7,340 (49.8%)
<b>Adult participants ≥ 18 years</b>	4,560 (56.5%)	3,314 (49.7%)	7,874 (53.4%)
<b>Relationship status</b>			
Single/divorced/widowed	1,861 (40.8%)	1,270 (38.3%)	3,131 (39.8%)
Married/committed relationship	2,690 (59.0%)	2,024 (61.1%)	4,714 (59.9%)
Unknown/refused to say	9 (0.2%)	20 (0.6%)	29 (0.4%)
<b>Education</b>			
No schooling	276 (6.1%)	684 (20.7%)	960 (12.2%)
Primary school	2,623 (57.5%)	1,879 (56.7%)	4,502 (57.2%)
Secondary/high school	1,448 (31.8%)	624 (18.8%)	2,072 (26.3%)
Tertiary/higher/post high school	209 (4.6%)	121 (3.7%)	330 (4.2%)
Unknown/refused to say	3 (0.1%)	4 (0.1%)	7 (0.1%)
<b>Work status</b>			
Working for pay	444 (9.7%)	572 (17.3%)	1,016 (12.9%)
Self-employed	703 (15.4%)	709 (21.4%)	1,412 (17.9%)
Working on own plot or looking after livestock	469 (10.3%)	1,075 (32.4%)	1,544 (19.6%)
Helping another family member with their business, without pay	33 (0.7%)	30 (0.9%)	63 (0.8%)
Full-time student	90 (2.0%)	38 (1.1%)	128 (1.6%)
Homemaker (looking after children/others/home)	1,734 (38.0%)	184 (5.6%)	1,918 (24.4%)
Long term sick or disabled	53 (1.2%)	41 (1.2%)	94 (1.2%)
Retired	205 (4.5%)	136 (4.1%)	341 (4.3%)
Unemployed	702 (15.4%)	461 (13.9%)	1,163 (14.8%)
Unknown/refused to say	127 (2.8%)	68 (2.1%)	195 (2.5%)

371 *Table 2 Socioeconomic characteristics of ComBaCaL cohort participants. IQR: Interquartile range*

372 Table 2 provides an overview of the individual-level socioeconomic characteristics of the adult  
373 participants enrolled in the ComBaCaL cohort by May 31, 2024, the complete data is available in the  
374 supplement. Median age of participants is 19 years (interquartile range (IQR) 9 and 42 years) with a  
375 higher median age of female participants (21 versus 17 years). 47% of participants are below 18 years.  
376 69.4% do not have any formal or only primary level education with more males having no education  
377 (20.7% versus 6.1%). 12.9% of adult participants work for pay (17.3% of male and 9.7% of female) while  
378 37.5% are self-employed or working in agriculture (53.8% of male and 25.1% of female). 38% of female  
379 and 5.6% of male participants are homemakers.

## 380 HIV status, chronic disease complications, and risk factors

Characteristic	Female, n(%) 4560 (58%)	Male, n(%) 3314 (42%)	Total, n(%) 7874 (100%)
<b>Self-reported HIV status</b>			
HIV positive	782 (17.1%)	406 (12.3%)	1,188 (15.1%)
Tested negative ≤ 12 months ago	2,435 (53.4%)	1,503 (45.4%)	3,938 (50.0%)
Tested negative > 12 months ago	846 (18.6%)	684 (20.6%)	1,530 (19.4%)
Unknown	453 (9.9%)	695 (21.0%)	1,148 (14.6%)
Refused to say	44 (1.0%)	26 (0.8%)	70 (0.9%)
<b>ART intake among those HIV positive (n=1188)</b>	771 (98.6%)	398 (98.0%)	1,169 (98.4%)
<b>Body mass index (kg/m<sup>2</sup>)</b>			
Underweight (<18.5)	250 (5.5%)	383 (11.7%)	633 (8.1%)
Normal weight (18.5–24.9)	1,678 (37.2%)	2,165 (66.1%)	3,843 (49.4%)
Overweight (25.0-29.9)	1,323 (29.3%)	548 (16.7%)	1,871 (24.0%)
Obese (≥30)	1,259 (27.9%)	181 (5.5%)	1,440 (18.5%)
Missing	50	37	87
<b>Abdominal circumference (cm), median (IQR)</b>			
Missing	86 (78, 97)	80 (75, 87)	83 (76, 93)
Missing	400	368	768
<b>Physical activity</b>			
Low physical activity	625 (13.8%)	360 (11.0%)	985 (12.6%)
Moderate physical activity	701 (15.5%)	345 (10.5%)	1,046 (13.4%)
High physical activity	3,201 (70.7%)	2,575 (78.5%)	5,776 (74.0%)
Missing	33	34	67
<b>Fruit intake (servings/day), median (IQR)<sup>1</sup></b>	0.14 (0.00, 0.86)	0.14 (0.00, 0.86)	0.14 (0.00, 0.86)
<b>Vegetable intake (servings/day), median (IQR)<sup>1</sup></b>	1.14 (0.57, 2.14)	0.86 (0.29, 2.00)	1.00 (0.43, 2.00)
<b>Consuming ≥5 portions of vegetables and fruits/day<sup>1</sup></b>	516 (11.3%)	350 (10.6%)	866 (11.0%)
<b>Always or often eating processed foods high in salt<sup>1</sup></b>	380 (8.3%)	298 (9.0%)	678 (8.6%)
<b>Always or often adding salt to food before or during eating<sup>1</sup></b>	631 (13.8%)	523 (15.8%)	1,154 (14.7%)
<b>Frequency of sweet food consumption<sup>1</sup></b>			
None per week	2,143 (47.0%)	1,821 (55.0%)	3,964 (50.4%)
One to two times a week	1,886 (41.4%)	1,156 (34.9%)	3,042 (38.6%)
Three to four times a week	369 (8.1%)	239 (7.2%)	608 (7.7%)
Five or more times a week	161 (3.5%)	96 (2.9%)	257 (3.3%)
<b>Frequency of sweet beverage consumption<sup>1</sup></b>			
None per week	2,371 (52.0%)	1,736 (52.4%)	4,107 (52.2%)
One to two times a week	1,762 (38.6%)	1,271 (38.4%)	3,033 (38.5%)
Three to four times a week	291 (6.4%)	203 (6.1%)	494 (6.3%)
Five or more times a week	135 (3.0%)	102 (3.1%)	237 (3.0%)
<b>Frequency of high-carbohydrate fried food consumption<sup>1</sup></b>			
None per week	1,361 (29.9%)	1,118 (33.8%)	2,479 (31.5%)
One to two times a week	2,215 (48.6%)	1,585 (47.9%)	3,800 (48.3%)
Three to four times a week	706 (15.5%)	410 (12.4%)	1,116 (14.2%)
Five or more times a week	277 (6.1%)	199 (6.0%)	476 (6.0%)
<sup>1</sup> Missing	1	2	3
<b>Smoking status</b>			
Current Smoker	1,015 (22.3%)	1,579 (47.9%)	2,594 (33.1%)
Never Smoker	3,500 (77.0%)	1,657 (50.2%)	5,157 (65.8%)
Ex-smoker	29 (0.7%)	63 (1.9%)	92 (1.2%)
Missing	16	15	31
<b>Frequency of alcohol consumption</b>			
Every day/ 7 days per week	71 (1.6%)	158 (4.8%)	229 (2.9%)
5 to 6 days per week	43 (0.9%)	102 (3.1%)	145 (1.8%)
3 to 4 days per week	93 (2.0%)	183 (5.5%)	276 (3.5%)
1 to 2 days per week	287 (6.3%)	505 (15.3%)	792 (10.1%)

Characteristic	Female, n(%)	Male, n(%)	Total, n(%)
	4560 (58%)	3314 (42%)	7874 (100%)
Less than 1 day per week	319 (7.1%)	440 (13.3%)	759 (9.7%)
Never	3,729 (82.1%)	1,914 (58.0%)	5,643 (71.9%)
Missing	18	12	30
<b>First-degree relative with hypertension</b>	976 (21.4%)	374 (11.3%)	1,350 (17.1%)
<b>First-degree relative with diabetes</b>	257 (5.6%)	90 (2.7%)	347 (4.4%)
<b>History of myocardial infarction</b>	62 (1.4%)	11 (0.3%)	73 (0.9%)
<b>History of stroke</b>	20 (0.4%)	13 (0.4%)	33 (0.4%)
<b>History of chronic kidney disease</b>	16 (0.4%)	5 (0.2%)	21 (0.3%)
<b>Current or previous TB diagnosis</b>	169 (3.7%)	238 (7.2%)	407 (5.2%)
<b>Severe vision impairment/blindness</b>	35 (0.8%)	7 (0.2%)	42 (0.5%)
<b>Peripheral arterial disease</b>	27 (0.6%)	5 (0.2%)	32 (0.4%)
<b>Heart failure</b>	32 (0.7%)	5 (0.2%)	37 (0.5%)
<b>History of neuropathy</b>	39 (0.9%)	8 (0.2%)	47 (0.6%)
<b>Chronic lung disease (COPD/asthma)</b>	16 (0.4%)	11 (0.3%)	27 (0.3%)
<b>Diabetic foot syndrome</b>	6 (0.1%)	1 (<0.1%)	7 (0.1%)

381 *Table 3 Body mass index, behavioural cardiovascular risk factors, self-reported HIV and ART status of participants. BMI: Body-*  
 382 *mass-index, COPD: Chronic Obstructive Pulmonary disease*

383 Table 3 shows the overview of self-reported HIV and ART status alongside chronic disease risk factors  
 384 and complications. Further details are in supplement.

385 The self-reported HIV prevalence is 15.1%, with 98.4% of people reporting to live with HIV taking ART.

386 42.5% of adult participants are overweight (BMI 25 – 29.9 kg/m<sup>2</sup>) or obese (BMI ≥30 kg/m<sup>2</sup>). Obesity is  
 387 more prevalent among women (27.9% versus 5.5%) while underweight (BMI <18.5 kg/m<sup>2</sup>) is more  
 388 prevalent among men (11.7% versus 5.5%). Most participants (74.0%) report a high level of physical  
 389 activity. Mean daily fruit and vegetable intake is 0.14 and 1.00 portions per day, respectively. 11% of  
 390 participants meet the recommended minimal fruit and vegetable intake of five or more portions per  
 391 day. 8.6% of participants always or often consume processed food high in salt and 14.7% always or often  
 392 add salt to their food before or during eating. 33.1% of participants are smokers with higher rates among  
 393 men (47.9% versus 22.3%). Overall, 71.9% of participants report to never consume alcohol (82.1%  
 394 among women, 58% among men), while 2.9% drink daily (1.6% among women, 4.8% among men).  
 395 17.1% and 4.4% of participants have a first-degree relative living with hypertension or diabetes,  
 396 respectively. 5.2% (7.2% male versus 3.7% female) report a current or previous tuberculosis infection  
 397 while the self-reported prevalences or history of cardiovascular or diabetes complications (history of  
 398 myocardial infarction, history of stroke, heart failure, peripheral arterial disease, chronic kidney disease,  
 399 peripheral neuropathy, severe vision impairment/blindness, COPD or asthma, diabetic foot syndrome)  
 400 range between 0.1% and 1%.

## 401 Hypertension screening and care cascade

402 Of the 7'917 adult participants, for 7'763 (98%) arterial hypertension screening outcomes are available.  
403 Five participants report the intake of antihypertensive medication and are thus considered having  
404 hypertension but have missing blood pressure measurements. Table 4 shows the overview of the blood  
405 pressure screening outcomes and care cascade. The median systolic and diastolic blood pressures were  
406 115 mmHg (IQR 106, 124) and 76 mmHg (IQR 70, 82) with similar values for women and men. 9.6% of  
407 women and 4.6% of men have a blood pressure of 140/90 mmHg or higher. The hypertension prevalence  
408 is 23.3% among women and 8.6% among men. Of the 1330 participants with hypertension, 1052 (79.1%)  
409 are women and 280 (21.05%) are men. 79.8% of participants with hypertension were aware of their  
410 diagnosis with higher awareness rates among women (82.8%) than men (68.3%). 75.1% of participants  
411 with hypertension are taking antihypertensive medication with higher treatment rates among women  
412 (78.3%) than men (62.9%). The control rate for hypertension is 56.1% with higher rates among women  
413 (58.5%) than men (46.8%).

Characteristic	Female, n (%), 4513 (58%)	Male, n (%), 3250 (42%)	Total, n (%), 7763 (100%)
<b>Systolic blood pressure<sup>1</sup> (mmHg), median (IQR)</b>	114 (105, 125)	116 (107, 124)	115 (106, 124)
Missing	5	0	5
<b>Diastolic blood pressure<sup>1</sup> (mmHg), median (IQR)</b>	76 (70, 83)	75 (69, 81)	76 (70, 82)
Missing	5	0	5
<b>Blood pressure categories</b>			
Below 130/85 mmHg	3,394 (75.2%)	2,595 (79.9%)	5,989 (77.2%)
130-139/85-89 mmHg	683 (15.1%)	506 (15.6%)	1,189 (15.3%)
Equal or above 140/90 mmHg	434 (9.6%)	148 (4.6%)	582 (7.5%)
Missing	5	0	5
<b>Hypertension diagnosis status<sup>2</sup></b>			
Hypertensive	1,052 (23.3%)	278 (8.6%)	1,330 (17.1%)
Not hypertensive	3,464 (76.7%)	2,971 (91.4%)	6,435 (82.9%)
<b>Hypertension diagnosis awareness<sup>3</sup> (n=1330)</b>			
Yes	871 (82.8%)	190 (68.3%)	1,061 (79.8%)
No	181 (17.2%)	88 (31.7%)	269 (20.2%)
<b>Receiving antihypertensive treatment (n=1330)</b>			
Yes	824 (78.3%)	175 (62.9%)	999 (75.1%)
No	228 (21.7%)	103 (37.1%)	331 (24.9%)
<b>Controlled blood pressure<sup>4</sup> (n=1330)</b>			
Yes	613 (58.5%)	130 (46.8%)	743 (56.1%)
No	434 (41.5%)	148 (53.2%)	582 (43.9%)
Missing	5	0	5

<sup>1</sup> Calculated as the mean of the last two out of three consecutive measurements at intervals of one minute.  
<sup>2</sup> Hypertension defined as two elevated blood pressure measurements in the range of 140-179/90-109 mmHg on two different days or two measurements of 180/110 mmHg or higher on the same day, at least 30 minutes apart or reporting intake of antihypertensive medication.  
<sup>3</sup> Diagnosis awareness among people with hypertension defined as reporting to have been previously diagnosed with hypertension.  
<sup>4</sup> Controlled blood pressure among people with hypertension defined as having a blood pressure below 140/90 mmHg.

414 *Table 4 Overview of the hypertension screening outcomes and care cascade.*

415



## 416 Diabetes screening and care cascade

417 5520 adult participants are 40 years or older or have a BMI of 25 kg/m<sup>2</sup> or higher or reported intake of  
418 antidiabetic medication and are therefore eligible for diabetes screening. Diabetes screening and care  
419 cascade outcomes were available for 5428 participants (98% of those eligible for diabetes screening)  
420 and are shown in table 5. Median fasting and random blood glucose levels were 4.6 and 4.9 mmol/l.  
421 5.2% of women and 2.0% of men have prediabetes. Type 2 diabetes prevalence is 4.0% with higher  
422 prevalence among women (4.8%) than men (2.6%). Two women have type 1 diabetes. Of the 220  
423 participants with type 2 diabetes, 149 (67.1%) reported current use of antidiabetic medication. 38.8%  
424 of participants with type 2 diabetes had controlled blood glucose levels. Treatment coverage was the  
425 same among men and women, while women had a better control rate (42.4% versus 26.5%). Median  
426 fasting blood glucose among people with type 2 diabetes was 7.8 mmol/l (4 (1.86%) missing) and median  
427 HbA1c was 6.7% (25 (12.9%) missing).

Characteristic	Female, n (%), 3507 (65%)	Male, n (%), 1921 (35%)	Total, n (%), 5428 (100%)
<b>Fasting blood glucose (mmol/l), median (IQR)</b>	4.90 (4.40, 5.30)	4.60 (4.10, 5.10)	4.80 (4.30, 5.20)
Missing	588	336	924
<b>Random blood glucose (mmol/l), median (IQR)</b>	5.00 (4.40, 5.30)	4.80 (4.30, 5.30)	4.90 (4.40, 5.30)
Missing	2,868	1,574	4,442
<b>Diabetes diagnosis status<sup>1</sup></b>			
Screened normal	3,151 (89.9%)	1,832 (95.5%)	4,983 (91.9%)
Prediabetes prevalence	183 (5.2%)	38 (2.0%)	221 (4.1%)
Type 1 diabetes prevalence	2 (<0.1%)	0 (0%)	2 (<0.1%)
Type 2 diabetes prevalence	170 (4.8%)	49 (2.6%)	219 (4.0%)
<b>Diabetes diagnosis awareness (n=219)<sup>2</sup></b>			
Yes	110 (64.7%)	33 (67.3%)	147 (67.1%)
No	60 (35.3%)	16 (32.7%)	76 (34.7%)
<b>Current use of diabetes treatment (n=220)</b>			
Yes	114 (67.1%)	33 (67.3%)	147 (67.1%)
No	56 (32.9%)	16 (32.7%)	72 (32.9%)
<b>Controlled diabetes (n=220)<sup>3</sup></b>			
Yes	72 (42.4%)	13 (26.5%)	85 (38.8%)
No	98 (57.6%)	36 (73.5%)	134 (61.2%)
<b>Fasting blood glucose (mmol/l) (n=215), median (IQR)</b>	7.5 (5.7, 9.9)	8.7 (6.6, 9.9)	7.8 (6.0, 9.9)
Missing	4	0	4
<b>Random blood glucose (mmol/l) (n=63), median (IQR)</b>	11.9 (7.8, 16.5)	9.9 (8.3, 11.5)	11.3 (8.0, 16.4)
Missing	117	39	156
<b>HbA1c (%) (n=194), median (IQR)</b>	6.60 (5.80, 8.50)	7.00 (6.10, 7.60)	6.70 (5.80, 8.40)
Missing	21	4	25

<sup>1</sup> Diabetes defined as random blood sugar  $\geq 11.1$  mmol/l or fasting blood sugar  $\geq 7.0$  mmol/l either in presence of cardinal diabetes symptoms (polyuria, polydipsia and weight loss) or after previously elevated blood sugar on a different day or reporting intake of antidiabetic medication. Classification as type 1 or type 2 based on previous health records and clinical expert opinion considering age at diagnosis, BMI, and family history.

<sup>2</sup> Diagnosis awareness defined as reporting to have been previously diagnosed with diabetes.

<sup>3</sup> Controlled diabetes defined as having a fasting blood sugar  $< 7.0$  mmol/l or a HbA1c  $< 6.5\%$  if fasting blood glucose is missing.

428 *Table 5 Overview of the diabetes screening outcomes and care cascade of participants with type 2 diabetes. HbA1c: Glycated*  
429 *haemoglobin, IQR: interquartile range*

430

## 431 Findings to date

### 432 Socioeconomic and demographic characteristics

433 The ComBaCaL cohort reflects the socioeconomic realities of rural Lesotho, characterized by limited  
434 economic resources and poor access to essential infrastructure. The IWI score of 26 indicates poor  
435 quality of housing material and scarcity of durable assets [51] and the median monetary monthly  
436 household income of 42.4 USD is far below the international poverty line of 2.15 USD per person per  
437 day, which defines extreme poverty [63]. Both the IWI score as well as the monetary income in our  
438 population are below the Lesotho national average, underscoring the economic disadvantages in our  
439 rural study area compared to the general Lesotho population [64,65].

440 These socioeconomic conditions have significant public health implications through various pathways.  
441 Access to affordable, reliable and clean energy is essential for health and development [66,67].  
442 However, only 13.2% of ComBaCaL cohort households have access to electricity, with the majority  
443 relying on polluting fuels like biomass and paraffin that have well-known negative effects on lung health,  
444 cardiovascular risk and other health outcomes [68,69]. Additionally, poor sanitation is a major concern  
445 with most households using unimproved pit latrines and nearly 40% of households lacking any toilet  
446 facilities. Poor sanitation contributes to the transmission of gastrointestinal infections, a leading cause  
447 of death among young children globally and a significantly contributor to Lesotho's high under-5  
448 mortality rate of 72 deaths 1'000 live births [70,71].

449 In line with a recent assessment of food insecurity among small-holder farming households in Lesotho  
450 [72], 49% of ComBaCaL cohort households experience moderate or severe food insecurity. Food  
451 insecurity reduces life expectancy not only through malnourishment, but also by contributing to the  
452 development of non-communicable diseases [73,74]. Although most households in the cohort own  
453 agricultural land, this does not seem to offer effective protection from food insecurity, due to the low  
454 levels of mechanisation and commercialization of small-holder farming in our region, which limits  
455 economic development and creates vulnerabilities to weather shocks and other environmental or  
456 economic challenges [75,76]. In July 2024, the Lesotho Prime Minister declared a state of emergency  
457 due to a severe food crisis caused by a prolonged drought, calling for international support to improving  
458 nutrition through enhanced agricultural production and resilience [77].

459 The limited economic resources, coupled with geographically challenging terrain and poor transport  
460 infrastructure, impede access to essential healthcare services and medications. This underscores the  
461 need for more accessible and equitable healthcare delivery systems for the rural areas, such as  
462 community-based health service models.

463 With a median age of 19 years, our cohort is younger than the general Lesotho population (median age  
464 22 years), while the proportion of elderly individuals (9.2% versus 6.1%) and women (55% versus 51%)  
465 is higher than at the national level [29,78]. These demographic patterns may be linked to labour  
466 migration, which has been a dominating feature of the Lesotho economy, with people of working age,  
467 predominantly men, leaving the rural areas for mine work or other jobs in South Africa or urban areas  
468 of Lesotho [79–81]. Furthermore, the higher fertility rates in rural compared to urban areas may  
469 contribute to the younger median age in our cohort [82,83].

470 The cohort's educational attainment is significantly lower than the national average where the most  
471 recent Demographic Health Survey reported 75% of women and 59% of men to have at least secondary  
472 school education [83]. This disparity underscores the educational disadvantages faced by rural  
473 populations in Lesotho with implications on economic development, health literacy, and thus health  
474 outcomes [84].

475 The formal employment rate is low (13%) while self-employment (18%) and agriculture (20%) are the  
476 most prevalent work statuses. 15% of participants reported to be unemployed, which is slightly below  
477 the national average of 16.5% [85].

#### 478 **Chronic disease risk factors and complications**

479 In line with a recent population-based survey conducted in the same region [25] and the national  
480 estimates [86], we observe a considerable rate of overweight (29.3%) and obesity (27.9%) among  
481 women, while men mostly have normal weight (66.1%) with lower but still relevant rates of overweight  
482 (16.7%) and obesity (5.5%). Like in many other low-and-middle-income countries, the rates of obesity  
483 in Lesotho have increased considerably over the last decades with an estimated three-fold increase  
484 since 1990 [86]. The high rates of overweight and obesity in our cohort confirm that the increasing  
485 obesity prevalence does not only affect the urban population but has a similar impact in rural areas.  
486 Importantly, underweight, especially among men, still poses a significant health burden in our cohort, a  
487 pattern observed in similar African settings [86].

488 A high level of physical activity was reported for men (78.5%) and women (70.7%), while the reported  
489 consumption of unhealthy food items and salt was low. Despite the limited correlation of self-reported  
490 dietary and physical activity patterns with objective measures [87–89], it appears that physical inactivity  
491 and consumption of typical unhealthy food items are not the main drivers for overweight in our rural  
492 study population. Other dietary factors, such as the overconsumption of widely available plain starch,  
493 that were not captured by our assessments might be contributing to the high rates of overweight and  
494 further investigations of dietary patterns are needed to fully understand the dietary factors contributing  
495 to the high rates of abnormal weight.

496 Fruit and vegetable consumption in our study population is low, with only 11% reaching the WHO-  
497 recommended minimum intake of five portions per day [90]. This rate is lower than in any country  
498 included in a recent systematic review on fruit and vegetable consumption in low-and-middle-income  
499 countries and part of the above-mentioned food insecurity crisis [91]. The particularly low fruit  
500 consumption with an average of only 0.14 portions per day is likely to be attributed to the low availability  
501 and relatively high prices of fruits in the region. Lesotho is a high-altitude country, and small-scale crop  
502 and cattle production are the main agricultural outputs while local fruit production is minimal [92]. Low  
503 fruit consumption is the leading dietary risk factor in terms of disability-adjusted life years and deaths  
504 in Southern Africa [93] and the low fruit and vegetable consumption has been identified as main gap  
505 towards a healthy and diverse diet for Basotho households [92]. To reduce diet-related health burden,  
506 efforts are urgently needed to transform agricultural practices and develop more resilient food supply  
507 systems, thereby improving food security including access to a diverse diet with sufficient fresh fruits  
508 and vegetables [72,94].

509 The smoking rates of 47.9% among men and 22.3% among women are higher than reported in a recent  
510 population-based survey [25] and also higher than the global average [95]. In Lesotho, smoking rates  
511 among men have remained stable on a high level while female smoking rates have increased sharply  
512 over the last decade [96] – a concerning pattern observed in many low- and middle-income countries  
513 [97].

514 Alcohol use at least once a week was reported by 18.2% of participants with higher frequencies for men,  
515 slightly exceeding the national estimates [98]. As in many other low-and-middle-income countries,  
516 alcohol consumption in Lesotho has increased considerably over the last two decades, a trend  
517 particularly concerning given the increased vulnerability of poor people to the deleterious effect of  
518 alcohol [98,99]. While alcohol consumption at the current level may contribute less to the overall NCD  
519 burden in the ComBaCaL cohort compared to other risk factors, such as smoking or obesity, it remains

520 a concern as it is a risk factor for the development of NCDs [100], and is known to increase the  
521 transmission of HIV and the susceptibility to other infectious diseases, especially tuberculosis [98].

522 Lesotho is among the countries with the highest HIV and tuberculosis burden globally [30,101] and the  
523 communicable disease burden currently remains higher than the NCD-related burden [100]. This is  
524 reflected in our cohort, where the self-reported HIV prevalence is 15.1%, the reported lifetime  
525 tuberculosis prevalence is 5.2%, while prevalences of cardiovascular disease complications are 1% or  
526 less. In the most recent population-based HIV impact assessment, the HIV prevalence assessed through  
527 population-based HIV testing in Mokhotlong and Butha-Buthe districts was 19% [26]. The comparably  
528 lower self-reported HIV prevalence in our cohort could be attributed to lower infection rates in the rural  
529 compared to urban areas, underreporting by participants or unawareness of diagnosis.

530 The low rates of cardiovascular disease complications reported in our cohort warrant further  
531 investigation. First, the diagnostic options for cardiovascular disease complications available in Lesotho  
532 are limited, leading to potential underdiagnosis. Second, due to limited therapeutic options and a  
533 generally low life expectancy [102], age-related cardiovascular disease complications may be less  
534 prevalent compared to other settings. A recent study conducted in Butha-Buthe and Mokhotlong has  
535 revealed high rates of undiagnosed end-organ damage associated with cardiovascular diseases, such as  
536 renal impairment, left-ventricular remodelling and peripheral neuropathy [32]. Longitudinal  
537 observations including cause of death assessments and more extensive diagnostics are required to  
538 provide further context to the available self-reported information. A recent echocardiography study in  
539 Butha-Buthe has revealed high levels of chronic pulmonary heart disease [103] and considering the high  
540 smoking rates, the high tuberculosis prevalence and occupational risk exposure of mine work, it seems  
541 likely that the true prevalence of chronic lung disease is higher than the 0.3% reported by participants  
542 in this study.

#### 543 **Hypertension and diabetes care cascades**

544 The hypertension prevalence of 17% (23% among women, 8.6% among men) is slightly lower than  
545 reported in a recent population-based survey in the two districts (22%) [25] and considerably lower than  
546 reported by a WHO survey at national level in 2012 (31.0%) [96]. These differences could be attributed  
547 to lower prevalences in rural compared to urban areas and potential overreporting in surveys that rely  
548 on single-day blood pressure measurements. Globally, the hypertension prevalence is slightly higher  
549 among men than women [104]. The higher prevalence among women in our cohort is likely to be driven  
550 by the higher overweight and obesity rates among women [105]. However, gender-specific age  
551 structures with more older females and differing care-seeking behaviours, with higher rates of previous  
552 diagnosis among women could also contribute to the observed gender disparity [106]. The diagnosis  
553 awareness rate (80%), treatment rate (75%) and control rate (56%) are considerably higher than in other  
554 low-and-middle-income countries, including Southern African countries [107,108]. This finding is  
555 remarkable, especially considering the high proportion of participants living in remote areas with  
556 difficult access to healthcare services and potentially lower level of health literacy due to limited formal  
557 education. The higher awareness, treatment and control rates in women compared to men are likely to  
558 be attributed to differences in healthcare seeking behaviour. It remains to be investigated whether the  
559 comparably high awareness, treatment and control rates could be influenced by potential overdiagnosis  
560 and overtreatment. Despite these findings, a substantial care gap remains with almost half of people  
561 living with hypertension not reaching treatment targets.

562 The type 2 diabetes prevalence in our cohort of 4.0% (4.8% among women, 2.5% among men) is lower  
563 than in a recent population-based survey in the two districts (5.3%) [25] and in the WHO survey  
564 conducted in 2012 (6.3%) [96]. This could be attributed to a potentially lower prevalence in rural settings

565 and to the use of different diagnostic criteria. In our cohort we took blood sugar measurements on  
566 different days while other studies often rely on single-day measurements. The observed treatment and  
567 control rates (67% and 39%) are higher than in most low-and-middle income countries and much higher  
568 than in the neighbouring country South Africa, where only 8.7% of people living with diabetes were  
569 reported to reach adequate control despite the use of a less stringent target level (8 mmol/l versus 7  
570 mmol/l) [109,110]. The remaining care gap remains substantial with 61% of people living with diabetes  
571 not reaching treatment targets. The possibility of overdiagnosis and overtreatment also warrants  
572 further investigation.

### 573 **Strengths and limitations**

574 Our study provides a comprehensive overview of sociodemographic characteristics, chronic disease risk  
575 factors, cardiovascular complications, HIV prevalence and on the care cascades for hypertension and  
576 diabetes in rural Lesotho. We demonstrate that trained CHWs, supported by a suitable clinical decision  
577 data collection tool, can facilitate large-scale population-based research data collection. Data collection  
578 by CHWs who live in the study villages offers the possibility of repeated visits allowing for very high  
579 enrolment, screening and follow-up rates. Continuous remote monitoring and interactions with CHWs  
580 through phone calls or field visits ensures high data accuracy and completeness. All CHWs in the  
581 ComBaCaL cohort operate within the Lesotho Ministry of Health framework.

582 The use of the TwiCs design enables the efficient implementation of trials nested in the cohort to  
583 generate evidence on healthcare interventions at a large-scale.

584 Limitations include the self-reported nature of many outcomes with biomedical assessments only  
585 conducted for hypertension and diabetes. Besides the inherent shortcomings of self-reported  
586 behavioural outcomes, the reliability of self-reported chronic disease complications is limited by the  
587 insufficient availability of appropriate diagnostics in Lesotho and by the limited clinical expertise of lay  
588 CHWs. This is partially mitigated by the careful training of CHWs on reading medical notes in the  
589 participant's health booklets and verification of reported diagnoses by the study team remotely or  
590 through field visits. For the assessment of food insecurity, only six out of the nine questions of the HFIAS  
591 were included in our questionnaire leading to limited sensitivity and making the calculation of the HFIAS  
592 score impossible [53]. People reporting intake of antihypertensive, or antidiabetic medication were  
593 reported as living with the respective condition without further verification of the diagnosis made by a  
594 previous healthcare provider. Thus, potential overdiagnosis and overtreatment cannot be excluded. To  
595 date, no HIV tests have been conducted and the associations between HIV and NCDs, as well as the  
596 interplay of shared risk factors have not yet been explored in detail. Furthermore, no anthropometric  
597 and behavioural risk factor data was collected among children impeding investigations of early chronic  
598 disease risk factors.

### 599 **Future plans**

600 Currently, three trials nested within the cohort assessing the effectiveness of CHW-delivered care for  
601 hypertension and diabetes are ongoing and will be completed early 2025. The prospective follow-up of  
602 participants living with hypertension and diabetes as part of the nested trials will also allow for a closer  
603 investigation of potential overdiagnosis and overtreatment of these conditions.

604 Further follow-up of the cohort including assessments of causes of death will allow for a more  
605 comprehensive understanding of the burden of different disease entities. The prevalence of behavioural  
606 risk factors including smoking, alcohol consumption, dietary and physical activity patterns will be

607 assessed prospectively as part of future cohort follow-up visits which to generate information on the  
608 dynamics of these risk factors over time.

609 The next trial to be nested within the cohort is in preparation and will assess the effectiveness of CHW-  
610 delivered HIV prevention and care. As part of this, HIV testing will be added to the cohort assessments,  
611 which will provide further insights into the true HIV prevalence and allow for more detailed  
612 investigations of associations between behavioural risk factors, NCDs and HIV. Furthermore, this trial  
613 will generate evidence on the feasibility and effectiveness of integrated CHW-delivered care targeting  
614 HIV, diabetes and hypertension in a comprehensive community-based care package.

## 615 **Conclusion**

616 The ComBaCaL cohort is a representative sample of the population living in rural Lesotho. It highlights  
617 significant socioeconomic challenges, such as low levels of wealth, education, housing quality,  
618 sanitation, access to clean energy, secure and diverse food supply, and health services compared to  
619 global and national standards, thereby posing multiple health risks. In addition to the anticipated high  
620 prevalence of HIV, we observed significant rates of hypertension and diabetes. While treatment and  
621 control rates for these chronic conditions are higher than expected, substantial care gaps remain. The  
622 most important behavioural risk factors identified are the high rates of overweight and obesity among  
623 women and the high smoking rates among men.

624 Beyond providing detailed socioeconomic, behavioural, and clinical insights, the ComBaCaL cohort,  
625 through its nested trials using the Trials within Cohorts (TwiCs) design, will generate evidence on the  
626 effectiveness of Community Health Worker (CHW)-delivered interventions to improve access to quality  
627 care for diabetes, hypertension, and HIV. The findings from the ComBaCaL cohort and its nested trials  
628 will enhance the understanding of chronic disease dynamics and inform the development of targeted  
629 health interventions in Lesotho and other regions with similar resource-limited, rural characteristics,  
630 particularly those employing a similar CHW system.

## 631 **Further details**

### 632 **Ethics approval**

633 The ComBaCaL cohort study and ongoing nested TwiCs were approved by the National Health Research  
634 Ethics Committee in Lesotho (ID 210-2022 and ID 210-2022 Nested) and the Ethikkommission Nordwest-  
635 und Zentralschweiz in Switzerland (AO\_2022-058, AO\_2022-00074 and AO\_2022-00077) and are  
636 registered on [clinicaltrials.gov](https://clinicaltrials.gov) (NCT05596773, NCT05743387, and NCT05684055). Amendments to the  
637 cohort protocol will be submitted to the National Health Research Ethics Committee in Lesotho prior to  
638 implementation.

### 639 **Patient and public involvement**

640 The Ministry of Health of Lesotho and the District Management Teams of Butha-Buthe district were  
641 among the initial members of the research consortium. Community-Engaged Research is key in the  
642 ComBaCaL program. The CHWs are members of the community and have been elected by the  
643 community. Research questions for nested trials are based on feedback from community-members  
644 during implementation of the ComBaCaL activities. Prior to implementation of the ComBaCaL cohort,  
645 we conducted a pilot study to incorporate views and perceptions of the local community and CHWs in  
646 the final design of the study and nested trials. Community representatives will be involved in the  
647 development of protocols for further nested trials.

## 648 **Collaboration and Data Sharing**

649 De-identified data will be made available on a suitable repository, such as zenodo or dryad. Investigators  
650 who would like to use the data for scientific publications must submit a concept sheet detailing the  
651 required data and planned analyses to the corresponding author for internal review and approval.  
652 ComBaCaL investigators or contributors shall be co-authors on publications using ComBaCaL data,  
653 provided they fulfil authorship criteria as defined by the International Committee of Medical Journal  
654 Editors [111].

## 655 **Funding**

656 The ComBaCaL project is funded by the TRANSFORM grant of the Swiss Agency for Development and  
657 Cooperation (project number 7F-10345.01.01) and a grant by the World Diabetes Foundation (WDF-  
658 1778). FG's salary is funded through a personal MD/PhD grant by the Swiss National Science Foundation  
659 (grant number 323530\_207035). AA's salary is funded through a career grant of the Swiss National  
660 Science Foundation (Postdoc mobility #P500PM\_221961). The funders had no role in the design of the  
661 cohort and nested trials and will not have any role during the analyses, interpretation of the data, or  
662 decision to submit results.

## 663 **Competing interests**

664 NDL reports having received travel grants to attend IAS, AIDS, and CROI conferences from Gilead  
665 Sciences Sarl and ViiV Healthcare. All other authors declare that they have no competing interests.

## 666 **Author contributions**

667 AA and NDL are the principal investigators, they acquired the main funding, lead the project and  
668 substantially contributed to the manuscript. FG drafted the manuscript, led the clinical development of  
669 the ComBaCaL app, the study implementation, and conceptualized the study together with the principal  
670 investigators. PG was responsible for the central management of the study implementation and  
671 contributed to the conceptualization of the study. RG (lead), TIL, MC, TK, MalebM, MalehM, MosM,  
672 MotM, ManM, MK, PMS, MB and RM were responsible for the local implementation of the study  
673 through training and supervision of CHWs and local data monitoring. TT, and FR supported the  
674 development of the ComBaCaL app and the training of VHWs. TL and GSS were responsible for central  
675 data management and GSS contributed substantially to the manuscript writing. SM was responsible for  
676 the local data management. MadM, SP, LS, MosT and MalL are responsible for the collaboration with  
677 the Lesotho Ministry of Health and gave input on the study design to ensure alignment with local  
678 guidelines and practices. DB and KK led the technical development of the ComBaCaL app. TB and ES are  
679 clinical hypertension and diabetes experts. They reviewed and approved the clinical algorithms and gave  
680 input on the presentation of the outcomes. MB is a clinical trial methods expert and gave input on the  
681 study design. FC is responsible for statistical analysis. All authors read and approved the final  
682 manuscript.

## 683 **Acknowledgements**

684 We would like to acknowledge the SolidarMed team in Lesotho and the involved Community Health  
685 Workers (CHWs) for their essential contributions to the ComBaCaL project. Our thanks also go to Ilse  
686 van Roy from SolidarMed Switzerland for her contributions as part of the project steering committee.  
687 We are grateful to the team at Medic ([www.medic.org](http://www.medic.org)) for making the Community Health Toolkit openly

688 available and for the technical support provided. Additionally, we extend our acknowledgements to the  
689 students from the Department of Informatics at the University of Zurich, under the supervision of Dario  
690 Staehelin and Gerhard Schwabe, for their contributions to developing the pilot version of the ComBaCaL  
691 app.

## 692 **References**

- 693 1. World Health Organization. Noncommunicable diseases country profiles 2018 [Internet]. World  
694 Health Organization; 2018 [cited 2021 Sep 13]. 223 p. Available from:  
695 <https://apps.who.int/iris/handle/10665/274512>
- 696 2. Bigna JJ, Noubiap JJ. The rising burden of non-communicable diseases in sub-Saharan Africa. *The*  
697 *Lancet Global Health*. 2019 Oct 1;7(10):e1295–6.
- 698 3. Gouda HN, Charlson F, Sorsdahl K, Ahmadzada S, Ferrari AJ, Erskine H, et al. Burden of non-  
699 communicable diseases in sub-Saharan Africa, 1990–2017: results from the Global Burden of  
700 Disease Study 2017. *The Lancet Global Health*. 2019 Oct 1;7(10):e1375–87.
- 701 4. Noncommunicable Diseases [Internet]. WHO | Regional Office for Africa. [cited 2021 Sep 13].  
702 Available from: <https://www.afro.who.int/health-topics/noncommunicable-diseases>
- 703 5. Hontelez JA, de Vlas SJ, Baltussen R, Newell ML, Bakker R, Tanser F, et al. The impact of  
704 antiretroviral treatment on the age composition of the HIV epidemic in sub-Saharan Africa. *AIDS*.  
705 2012 Jul 31;26(0 1):10.1097/QAD.0b013e3283558526.
- 706 6. Geldsetzer P, Ortblad K, Bärnighausen T. The efficiency of chronic disease care in sub-Saharan  
707 Africa. *BMC Med*. 2016 Aug 26;14(1):127.
- 708 7. Geldsetzer P, Manne-Goehler J, Bärnighausen T, Davies JI. What research is needed to address the  
709 co-epidemics of HIV and cardiometabolic disease in sub-Saharan Africa? *The Lancet Diabetes &*  
710 *Endocrinology*. 2018 Jan;6(1):7–9.
- 711 8. Oni T, Unwin N. Why the communicable/non-communicable disease dichotomy is problematic for  
712 public health control strategies: implications of multimorbidity for health systems in an era of  
713 health transition. *Int Health*. 2015 Nov;7(6):390–9.
- 714 9. Coetsee L, Bogler L, De Neve J, Bärnighausen T, Geldsetzer P, Vollmer S. HIV, antiretroviral therapy  
715 and non-communicable diseases in sub-Saharan Africa: empirical evidence from 44 countries over  
716 the period 2000 to 2016. *J Int AIDS Soc*. 2019 Jul 28;22(7):e25364.
- 717 10. Manne-Goehler J, Geldsetzer P, Bärnighausen T. The causal impact of ART on NCDs: leveraging  
718 quasi-experiments. *The Lancet Diabetes & Endocrinology*. 2017 Jan;5(1):14.
- 719 11. The Lancet Diabetes & Endocrinology. HIV and NCDs: the need to build stronger health systems.  
720 *The Lancet Diabetes & Endocrinology*. 2016 Jul;4(7):549–50.
- 721 12. Lewin S, Munabi-Babigumira S, Glenton C, Daniels K, Bosch-Capblanch X, van Wyk BE, et al. Lay  
722 health workers in primary and community health care for maternal and child health and the  
723 management of infectious diseases. *Cochrane Effective Practice and Organisation of Care Group*,  
724 editor. *Cochrane Database of Systematic Reviews* [Internet]. 2010 Mar 17 [cited 2022 Jan 6];  
725 Available from: <https://doi.wiley.com/10.1002/14651858.CD004015.pub3>



- 726 13. Mwai GW, Mburu G, Torpey K, Frost P, Ford N, Seeley J. Role and outcomes of community health  
727 workers in HIV care in sub-Saharan Africa: a systematic review. *Journal of the International AIDS*  
728 *Society*. 2013 Jan;16(1):18586.
- 729 14. Lassi ZS, Bhutta ZA. Community-based intervention packages for reducing maternal and neonatal  
730 morbidity and mortality and improving neonatal outcomes. *Cochrane Pregnancy and Childbirth*  
731 *Group*, editor. *Cochrane Database of Systematic Reviews* [Internet]. 2015 Mar 23 [cited 2022 May  
732 21];2015(3). Available from: <http://doi.wiley.com/10.1002/14651858.CD007754.pub3>
- 733 15. Bhutta ZA, Lassi ZS, Pariyo G, Huicho L. Global Experience of Community Health Workers for  
734 Delivery of Health Related Millennium Development Goals: A Systematic Review, Country Case  
735 Studies, and Recommendations for Integration into National Health Systems [Internet]. *World*  
736 *Health Organization, Global Health Workforce Alliance*; 2010. Available from:  
737 [https://chwcentral.org/wp-content/uploads/2013/07/Global-Experience-of-Community-Health-](https://chwcentral.org/wp-content/uploads/2013/07/Global-Experience-of-Community-Health-Workers-for-Delivery-of-Health-Related-Millennium-Development-Goals.pdf)  
738 [Workers-for-Delivery-of-Health-Related-Millennium-Development-Goals.pdf](https://chwcentral.org/wp-content/uploads/2013/07/Global-Experience-of-Community-Health-Workers-for-Delivery-of-Health-Related-Millennium-Development-Goals.pdf)
- 739 16. Augustovski F, Chaparro M, Palacios A, Shi L, Beratarrechea A, Irazola V, et al. Cost-Effectiveness  
740 of a Comprehensive Approach for Hypertension Control in Low-Income Settings in Argentina: Trial-  
741 Based Analysis of the Hypertension Control Program in Argentina. *Value in Health*. 2018  
742 Dec;21(12):1357–64.
- 743 17. World Health Organization. WHO guideline on health policy and system support to optimize  
744 community health worker programmes [Internet]. Geneva: World Health Organization; 2018  
745 [cited 2022 May 20]. (Human resources for health observer series;27). Available from:  
746 <https://apps.who.int/iris/handle/10665/352552>
- 747 18. UNAIDS and CSD endorse creation of 2 million CHWs in support of 90-90-90 - Center for  
748 Sustainable Development [Internet]. 2017 [cited 2017 Sep 6]. Available from:  
749 <http://csd.columbia.edu/2017/02/17/unaid-and-csd-endorse-creation-of-2-million-chws/>
- 750 19. Sando D, Kintu A, Okello S, Kawungezi PC, Guwatudde D, Mutungi G, et al. Cost-effectiveness  
751 analysis of integrating screening and treatment of selected non-communicable diseases into  
752 HIV/AIDS treatment in Uganda. *J Int AIDS Soc*. 2020 Jun;23 Suppl 1(Suppl 1):e25507–e25507.
- 753 20. Dave S, Peter T, Fogarty C, Karatzas N, Belinsky N, Pant Pai N. Which community-based HIV  
754 initiatives are effective in achieving UNAIDS 90-90-90 targets? A systematic review and meta-  
755 analysis of evidence (2007-2018). *PLOS ONE*. 2019 Jul 17;14(7):e0219826.
- 756 21. Fernández LG, Firima E, Robinson E, Ursprung F, Huber J, Amstutz A, et al. Community-based care  
757 models for arterial hypertension management in non-pregnant adults in sub-Saharan Africa: a  
758 literature scoping review and framework for designing chronic services. *BMC Public Health*. 2022  
759 Dec;22(1):1126.
- 760 22. Firima E, Gonzalez L, Ursprung F, Robinson E, Huber J, Belus JM, et al. Community-based models  
761 of care for management of type 2 diabetes mellitus among non-pregnant adults in sub-Saharan  
762 Africa: a scoping review [Internet]. *Public and Global Health*; 2022 Nov [cited 2023 Jun 2]. Available  
763 from: <http://medrxiv.org/lookup/doi/10.1101/2022.11.17.22282376>
- 764 23. Mendenhall E, Kohrt BA, Norris SA, Ndeti D, Prabhakaran D. Non-communicable disease  
765 syndemics: poverty, depression, and diabetes among low-income populations. *Lancet*. 2017 Mar  
766 4;389(10072):951–63.

- 767 24. Sandholzer-Yilmaz AS, Kroeber ES, Ayele W, Frese T, Kantelhardt EJ, Unverzagt S. Randomised  
768 controlled trials on prevention, diagnosis and treatment of diabetes in African countries: a  
769 systematic review. *BMJ Open*. 2022 May;12(5):e050021.
- 770 25. González Fernández L, Firima E, Gupta R, Sematle MP, Khomolishoele M, Molulela M, et al.  
771 Prevalence and determinants of cardiovascular risk factors in Lesotho: a population-based survey.  
772 *International Health*. 2024 May 1;16(3):313–24.
- 773 26. Lesotho Ministry of Health (MoH). Lesotho Population-based HIV Impact Assessment 2020 (LePHIA  
774 2020): Final Report [Internet]. 2022 [cited 2023 Aug 24]. Available from:  
775 [https://phia.icap.columbia.edu/wp-](https://phia.icap.columbia.edu/wp-content/uploads/2021/11/260622_LePHIA_RR3_Final_Digital_v2.pdf)  
776 [content/uploads/2021/11/260622\\_LePHIA\\_RR3\\_Final\\_Digital\\_v2.pdf](https://phia.icap.columbia.edu/wp-content/uploads/2021/11/260622_LePHIA_RR3_Final_Digital_v2.pdf)
- 777 27. World Population Prospects - Population Division - United Nations [Internet]. [cited 2024 Jul 12].  
778 Available from: <https://population.un.org/wpp/Graphs/DemographicProfiles/Line/426>
- 779 28. Ndayizigiye M, Allan-Blitz LT, Dally E, Abebe S, Andom A, Tlali R, et al. Improving access to health  
780 services through health reform in Lesotho: Progress made towards achieving Universal Health  
781 Coverage. *PLOS Glob Public Health*. 2022 Nov 16;2(11):e0000985.
- 782 29. Lesotho Bureau of Statistics. 2016 Lesotho population and housing census. 2018.
- 783 30. UNAIDS data 2023 [Internet]. Geneva, Switzerland: UNAIDS; 2023. Available from:  
784 [https://www.unaids.org/en/resources/documents/2023/2023\\_unaids\\_data](https://www.unaids.org/en/resources/documents/2023/2023_unaids_data)
- 785 31. Fernández LG, Firima E, Gupta R, Sematle M, Khomolishoele M, Molulela M, et al. Awareness,  
786 treatment, and control among adults living with arterial hypertension or diabetes mellitus in two  
787 rural districts in Lesotho [Internet]. 2023 [cited 2024 May 7]. Available from:  
788 <https://www.researchsquare.com/article/rs-3189573/v1>
- 789 32. Firima E, Gonzalez L, Khan MA, Manthabiseng M, Sematle MP, Bane M, et al. High Rates of  
790 Undiagnosed Target Organ Damage Among Adults with Elevated Blood Pressure or Diabetes  
791 Mellitus in a Community-Based Survey in Lesotho. *J Epidemiol Glob Health* [Internet]. 2023 Oct 26  
792 [cited 2023 Oct 27]; Available from: <https://link.springer.com/10.1007/s44197-023-00158-5>
- 793 33. Zbelo MG, Lesaoana MA, Lechesa RA, Victorious N. Assessing Lesotho's Financial Burden of  
794 Household Payments and Access to Healthcare, 2022. *Int J Health Policy Plann*. 2023;
- 795 34. Asamani JA, Zurn P, Pitso P, Mothebe M, Moalosi N, Malieane T, et al. Health workforce supply,  
796 needs and financial feasibility in Lesotho: a labour market analysis. *BMJ Glob Health*. 2022 May  
797 24;7(Suppl 1):e008420.
- 798 35. Joseph JK, Rigodon J, Cancedda C, Haidar M, Lesia N, Ramanagoela L, et al. Lay health workers and  
799 HIV care in rural Lesotho: a report from the field. *AIDS patient care and STDs*. 2012 Mar;26(3):141–  
800 7.
- 801 36. Andriessen PP, van der Endt RP, Gotink MH. The village health worker project in Lesotho: an  
802 evaluation. *Tropical doctor*. 1990 Jul;20(3):111–3.
- 803 37. Ministry of Health Lesotho. THE VILLAGE HEALTH PROGRAM POLICY. 2020;58.
- 804 38. van der Velden JM, Verkooijen HM, Young-Afat DA, Burbach JPM, van Vulpen M, Relton C, et al.  
805 The cohort multiple randomized controlled trial design: a valid and efficient alternative to  
806 pragmatic trials? *Int J Epidemiol*. 2016 Apr 26;dyw050.

- 807 39. Relton C, Torgerson D, O’Cathain A, Nicholl J. Rethinking pragmatic randomised controlled trials:  
808 introducing the “cohort multiple randomised controlled trial” design. *BMJ*. 2010 Mar  
809 19;340:c1066.
- 810 40. Amstutz A, Schönenberger CM, Speich B, Griessbach A, Schwenke JM, Glasstetter J, et al.  
811 Characteristics, consent patterns, and challenges of randomized trials using the Trials within  
812 Cohorts (TwICs) design A scoping review. *Journal of Clinical Epidemiology*. 2024 Jul 19;111469.
- 813 41. Ford I, Norrie J. Pragmatic Trials. *N Engl J Med*. 2016 Aug 4;375(5):454–63.
- 814 42. van der Velden JM, Verkooijen HM, Young-Afat DA, Burbach JP, van Vulpen M, Relton C, et al. The  
815 cohort multiple randomized controlled trial design: a valid and efficient alternative to pragmatic  
816 trials? *International Journal of Epidemiology*. 2017 Feb 1;46(1):96–102.
- 817 43. Young-Afat DA, Verkooijen HAM, van Gils CH, van der Velden JM, Burbach JP, Elias SG, et al. Brief  
818 Report: Staged-informed Consent in the Cohort Multiple Randomized Controlled Trial Design.  
819 *Epidemiology*. 2016 May;27(3):389–92.
- 820 44. Gerber F, Gupta R, Lejone TI, Tahirsylaj T, Lee T, Kohler M, et al. Community-based type 2 diabetes  
821 care by lay village health workers in rural Lesotho: protocol for a cluster-randomized trial within  
822 the ComBaCaL cohort study (ComBaCaL T2D TwiC). *Trials*. 2023 Oct 24;24(1):688.
- 823 45. Gerber F, Gupta R, Lejone TI, Tahirsylaj T, Lee T, Sanchez-Samaniego G, et al. Community-based  
824 management of arterial hypertension and cardiovascular risk factors by lay village health workers  
825 for people with controlled and uncontrolled blood pressure in rural Lesotho: joint protocol for two  
826 cluster-randomized trials within the ComBaCaL cohort study (ComBaCaL aHT TwiC 1 and  
827 ComBaCaL aHT TwiC 2). *Trials*. 2024 Jun 6;25(1):365.
- 828 46. Spatial without Compromise · QGIS Web Site [Internet]. [cited 2024 Sep 15]. Available from:  
829 <https://qgis.org/>
- 830 47. Staehelin D, Dolata M, Peyer N, Gerber F, Schwabe G. Algorithmic Management for Community  
831 Health Worker in Sub-Saharan Africa: Curse or Blessing? In: Abdelnour Nocera J, Kristín Lárusdóttir  
832 M, Petrie H, Piccinno A, Winckler M, editors. *Human-Computer Interaction – INTERACT 2023*.  
833 Cham: Springer Nature Switzerland; 2023. p. 94–114. (Lecture Notes in Computer Science).
- 834 48. Staehelin D, Schmid D, Gerber F, Dolata M, Schwabe G. Empowering Community Health Workers  
835 with Scripted Medicine: A Design Science Research Study (Preprint) [Internet]. 2024 [cited 2024  
836 Apr 9]. Available from: <http://preprints.jmir.org/preprint/57545>
- 837 49. Rutstein, Shea O., Johnson K. The DHS wealth index. In Calverton, Maryland, USA: ORC Macro;  
838 2004 [cited 2024 Aug 23]. Available from: <https://dhsprogram.com/pubs/pdf/CR6/CR6.pdf>
- 839 50. Bingenheimer JB. Wealth, Wealth Indices and HIV Risk in East Africa. *International Family Planning*  
840 *Perspectives*. 2007;33(2):83–4.
- 841 51. Smits J, Steendijk R. The International Wealth Index (IWI). *Soc Indic Res*. 2015 May 1;122(1):65–  
842 85.
- 843 52. Woolard K, Munira S, Jesmin K, Hruschka D. Evaluating the Performance of Five Asset-based  
844 Wealth Indices in Predicting Socioeconomic Position in Rural Bangladesh. *Field Methods*. 2022  
845 May 1;34(2):108–24.

- 846 53. Coates J, Swindale A, Bilinsky P. Household Food Insecurity Access Scale (HFIAS) for measurement  
847 of food access: indicator guide: version 3. 2007;
- 848 54. Gulliford M, Figueroa-Munoz J, Morgan M, Hughes D, Gibson B, Beech R, et al. What does ‘access  
849 to health care’ mean? *J Health Serv Res Policy*. 2002 Jul;7(3):186–8.
- 850 55. STEPwise approach to NCD risk factor surveillance (STEPS) [Internet]. [cited 2024 Feb 27]. Available  
851 from: <https://www.who.int/teams/noncommunicable-diseases/surveillance/systems-tools/steps>
- 852 56. Okeyo AP, Seekoe E, de Villiers A, Faber M, Nel JH, Steyn NP. Dietary Practices and Adolescent  
853 Obesity in Secondary School Learners at Disadvantaged Schools in South Africa: Urban–Rural and  
854 Gender Differences. *IJERPH*. 2020 Aug 13;17(16):5864.
- 855 57. Craig CL, Marshall AL, Sjöström M, Bauman AE, Booth ML, Ainsworth BE, et al. International  
856 Physical Activity Questionnaire: 12-Country Reliability and Validity. *Medicine & Science in Sports  
857 & Exercise*. 2003 Aug;35(8):1381–95.
- 858 58. Ministry of Health Lesotho. Standard Treatment Guidelines for Lesotho. 2022.
- 859 59. Takahashi H, Yoshika M, Yokoi T. Validation of two automatic devices for the self-measurement of  
860 blood pressure according to the ANSI/AAMI/ISO81060-2:2009 guidelines: the Omron BP765 (HEM-  
861 7311-ZSA) and the Omron BP760N (HEM-7320-Z). *VHRM*. 2015 Jan;49.
- 862 60. Community Health Toolkit [Internet]. Community Health Toolkit. [cited 2023 May 29]. Available  
863 from: <https://communityhealthtoolkit.org>
- 864 61. R Core Team. R: A language and environment for statistical computing [Internet]. Austria, Vienna:  
865 R Foundation for Statistical Computing; 2023. Available from: <https://www.R-project.org/>
- 866 62. Bilateral exchange rates - data | BIS Data Portal [Internet]. [cited 2024 Sep 8]. Available from:  
867 <https://data.bis.org/topics/XRU/data>
- 868 63. Hasell J, Roser M. From \$1.90 to \$2.15 a day: the updated International Poverty Line. *Our World  
869 in Data* [Internet]. 2024 Feb 27 [cited 2024 Sep 3]; Available from:  
870 <https://ourworldindata.org/from-1-90-to-2-15-a-day-the-updated-international-poverty-line>
- 871 64. World Bank. Gross national income per capita 2022, Atlas method and PPP [Internet]. World  
872 Development Indicators database; 2023 [cited 2024 Sep 8]. Available from:  
873 [https://databankfiles.worldbank.org/public/ddpext\\_download/GNIPC.pdf](https://databankfiles.worldbank.org/public/ddpext_download/GNIPC.pdf)
- 874 65. Mean International Wealth Index (IWI) score of region - Table - Area Database - Global Data Lab  
875 [Internet]. [cited 2024 Sep 8]. Available from:  
876 <https://globaldatalab.org/areadata/table/iwi/LSO/?levels=1+4>
- 877 66. Ritchie H, Rosado P, Roser M. Access to Energy. *Our World in Data* [Internet]. 2024 Jan 4 [cited  
878 2024 Sep 3]; Available from: <https://ourworldindata.org/energy-access>
- 879 67. United Nations Department of Economic and Social Affairs. The Sustainable Development Goals  
880 Report 2023: Special Edition [Internet]. United Nations; 2023 [cited 2024 Sep 3]. (The Sustainable  
881 Development Goals Report). Available from: [https://www.un-  
882 ilibrary.org/content/books/9789210024914](https://www.un-ilibrary.org/content/books/9789210024914)

- 883 68. Lee KK, Bing R, Kiang J, Bashir S, Spath N, Stelzle D, et al. Adverse health effects associated with  
884 household air pollution: a systematic review, meta-analysis, and burden estimation study. *Lancet*  
885 *Glob Health*. 2020 Nov;8(11):e1427–34.
- 886 69. Panos E, Densing M, Volkart K. Access to electricity in the World Energy Council’s global energy  
887 scenarios: An outlook for developing regions until 2030. *Energy Strategy Reviews*. 2016 Mar  
888 1;9:28–49.
- 889 70. Gu Y, Zhou W, Zheng T, Huang F. Health effects and externalities of the popularization of sanitary  
890 toilets: evidence from Rural China. *BMC Public Health*. 2023 Nov 11;23:2225.
- 891 71. UNICEF. Lesotho (LSO) - Demographics, Health & Infant Mortality [Internet]. UNICEF DATA. [cited  
892 2024 Sep 3]. Available from: <https://data.unicef.org/country/lso/>
- 893 72. Nkoko N, Cronje N, Swanepoel JW. Factors associated with food security among small-holder  
894 farming households in Lesotho. *Agric & Food Secur*. 2024 Jan 15;13(1):3.
- 895 73. Nkambule SJ, Moodley I, Kuupiel D, Mashamba-Thompson TP. Association between food  
896 insecurity and key metabolic risk factors for diet-sensitive non-communicable diseases in sub-  
897 Saharan Africa: a systematic review and meta-analysis. *Sci Rep*. 2021 Mar 4;11(1):5178.
- 898 74. Beyene SD. The impact of food insecurity on health outcomes: empirical evidence from sub-  
899 Saharan African countries. *BMC Public Health*. 2023 Feb 15;23(1):338.
- 900 75. Ibrahim HK, Hendriks SL, Schönfeldt HC. The effect of land tenure across food security outcomes  
901 among smallholder farmers using a flexible conditional difference-in-difference approach.  
902 *International Journal of Agricultural Sustainability*. 2023 Dec 31;21(1):2220900.
- 903 76. Carletto C, Corral P, Guelfi A. Agricultural commercialization and nutrition revisited: Empirical  
904 evidence from three African countries. *Food Policy*. 2017 Feb 1;67:106–18.
- 905 77. Russell R. A Commitment to Lesotho: UN’s High-Level Visit Aims to Boost Food Security | United  
906 Nations in Lesotho [Internet]. United Nations; 2024 Aug [cited 2024 Sep 17]. Available from:  
907 [https://lesotho.un.org/en/276401-commitment-lesotho-un%E2%80%99s-high-level-visit-aims-](https://lesotho.un.org/en/276401-commitment-lesotho-un%E2%80%99s-high-level-visit-aims-boost-food-security)  
908 [boost-food-security,](https://lesotho.un.org/en/276401-commitment-lesotho-un%E2%80%99s-high-level-visit-aims-boost-food-security) [https://lesotho.un.org/en/276401-commitment-lesotho-un%E2%80%99s-](https://lesotho.un.org/en/276401-commitment-lesotho-un%E2%80%99s-high-level-visit-aims-boost-food-security)  
909 [high-level-visit-aims-boost-food-security](https://lesotho.un.org/en/276401-commitment-lesotho-un%E2%80%99s-high-level-visit-aims-boost-food-security)
- 910 78. Lesotho Demographics 2023 (Population, Age, Sex, Trends) - Worldometer [Internet]. [cited 2024  
911 Jul 12]. Available from: <https://www.worldometers.info/demographics/lesotho-demographics/>
- 912 79. Botea I, Chakravarty S, Compernelle N. Female Migration in Lesotho: Determinants and  
913 Opportunities [Internet]. World Bank, Washington, DC; 2018 [cited 2024 Jul 12]. Available from:  
914 <https://hdl.handle.net/10986/29217>
- 915 80. Crush JS, editor. Migration, remittances and ‘development’ in Lesotho. Pretoria: Institute for  
916 Democracy in South Africa (IDASA); 2010. 89 p. (Migration policy series).
- 917 81. Palk L, Blower S. Mobility and circular migration in Lesotho: implications for transmission,  
918 treatment and control of a severe HIV epidemic. *J Acquir Immune Defic Syndr*. 2015 Apr  
919 15;68(5):604–8.
- 920 82. Adhikari S, Lutz W, Kc S. Rural/urban fertility differentials in the Global South: Is female education  
921 the key driver of declining birth rates?

- 922 83. Ministry of Health Lesotho, ICF. Lesotho Demographic Health Survey 2023-2024: Key Indicator  
923 Report. Maseru, Lesotho, and Rockville, Maryland, USE; 2024.
- 924 84. Pierce H, Foster K. Health and well-being outcomes of women and children in Sub-Saharan Africa:  
925 Examining the role of formal schooling, literacy, and health knowledge. *International Journal of*  
926 *Educational Development*. 2020 Nov;79:102273.
- 927 85. World Bank Open Data Lesotho Country Profile [Internet]. World Bank Open Data Lesotho  
928 Overview. [cited 2024 Jul 12]. Available from: <https://data.worldbank.org/country/lesotho>
- 929 86. Phelps NH, Singleton RK, Zhou B, Heap RA, Mishra A, Bennett JE, et al. Worldwide trends in  
930 underweight and obesity from 1990 to 2022: a pooled analysis of 3663 population-representative  
931 studies with 222 million children, adolescents, and adults. *The Lancet*. 2024  
932 Feb;S0140673623027502.
- 933 87. Lee PH, Macfarlane DJ, Lam T, Stewart SM. Validity of the international physical activity  
934 questionnaire short form (IPAQ-SF): A systematic review. *International Journal of Behavioral*  
935 *Nutrition and Physical Activity*. 2011 Oct 21;8(1):115.
- 936 88. Cui Q, Xia Y, Wu Q, Chang Q, Niu K, Zhao Y. Validity of the food frequency questionnaire for adults  
937 in nutritional epidemiological studies: A systematic review and meta-analysis. *Crit Rev Food Sci*  
938 *Nutr*. 2023;63(12):1670–88.
- 939 89. Willett W. Reproducibility and Validity of Food-Frequency Questionnaires. In: Willett WC, editor.  
940 *Nutritional Epidemiology* [Internet]. Oxford University Press; 1998 [cited 2024 Jul 19]. p. 0.  
941 Available from: <https://doi.org/10.1093/acprof:oso/9780195122978.003.06>
- 942 90. World Health Organization, FAO, editors. Diet, nutrition, and the prevention of chronic diseases:  
943 report of a WHO-FAO Expert Consultation ; [Joint WHO-FAO Expert Consultation on Diet,  
944 Nutrition, and the Prevention of Chronic Diseases, 2002, Geneva, Switzerland]. Geneva: World  
945 Health Organization; 2003. 149 p. (WHO technical report series).
- 946 91. Frank SM, Webster J, McKenzie B, Geldsetzer P, Manne-Goehler J, Andall-Brereton G, et al.  
947 Consumption of Fruits and Vegetables Among Individuals 15 Years and Older in 28 Low- and  
948 Middle-Income Countries. *The Journal of Nutrition*. 2019 Jul;149(7):1252–9.
- 949 92. Bose I, Baldi G, Kiess L, De Pee S. The “Fill the Nutrient Gap” analysis: An approach to strengthen  
950 nutrition situation analysis and decision making towards multisectoral policies and systems  
951 change. *Maternal & Child Nutrition*. 2019 Jul;15(3):e12793.
- 952 93. GBD 2017 Diet Collaborators. Health effects of dietary risks in 195 countries, 1990-2017: a  
953 systematic analysis for the Global Burden of Disease Study 2017. *Lancet*. 2019/04/04 ed. 2019 May  
954 11;393(10184):1958–72.
- 955 94. Daidone S, Davis B, Dewbre J, Miguez B, Niang O, Pellerano L. Linking agriculture and social  
956 protection for food security: The case of Lesotho. *Global Food Security*. 2017 Mar 1;12:146–54.
- 957 95. Vos T, Lim SS, Abbafati C, Abbas KM, Abbasi M, Abbasifard M, et al. Global burden of 369 diseases  
958 and injuries in 204 countries and territories, 1990–2019: a systematic analysis for the  
959 Global Burden of Disease Study 2019. *The Lancet*. 2020;396(10258):1204–22.
- 960 96. Lesotho - STEPS 2012 [Internet]. [cited 2024 Jul 17]. Available from:  
961 <https://extranet.who.int/ncdsmicrodata/index.php/catalog/491/related-materials>

- 962 97. Hodson R, Ashour M. An avoidable health disaster: Tobacco smoking continues to place an  
963 extraordinarily heavy burden on global health. *Sci Am*. 2023 Sep 1;329(2):0.
- 964 98. World Health Organization. Global status report on alcohol and health 2018 [Internet]. Geneva:  
965 World Health Organization; 2018 [cited 2024 Jul 17]. 450 p. Available from:  
966 <https://iris.who.int/handle/10665/274603>
- 967 99. Katikireddi SV, Whitley E, Lewsey J, Gray L, Leyland AH. Socioeconomic status as an effect modifier  
968 of alcohol consumption and harm: analysis of linked cohort data. *Lancet Public Health*. 2017 May  
969 10;2(6):e267–76.
- 970 100. Murray CJL, Aravkin AY, Zheng P, Abbafati C, Abbas KM, Abbasi-Kangevari M, et al. Global burden  
971 of 87 risk factors in 204 countries and territories, 1990–2019: a systematic analysis for the Global  
972 Burden of Disease Study 2019. *The Lancet*. 2020 Oct;396(10258):1223–49.
- 973 101. World Health Organization. Global Tuberculosis Report 2023 [Internet]. Geneva; 2023 [cited 2024  
974 Jul 19]. Available from: [https://iris.who.int/bitstream/handle/10665/373828/9789240083851-](https://iris.who.int/bitstream/handle/10665/373828/9789240083851-eng.pdf?sequence=1)  
975 [eng.pdf?sequence=1](https://iris.who.int/bitstream/handle/10665/373828/9789240083851-eng.pdf?sequence=1)
- 976 102. Wang H, Abbas KM, Abbasifard M, Abbasi-Kangevari M, Abbastabar H, Abd-Allah F, et al. Global  
977 age-sex-specific fertility, mortality, healthy life expectancy (HALE), and population estimates in  
978 204 countries and territories, 1950–2019: a comprehensive demographic analysis for the Global  
979 Burden of Disease Study 2019. *The Lancet*. 2020 Oct;396(10258):1160–203.
- 980 103. Ndongala NJ, Maepa C, Nyondo E, Amstutz A, du Reau de la Gaignonnière B. Etiology,  
981 characteristics and occurrence of heart diseases in rural Lesotho (ECHO-Lesotho): A retrospective  
982 echocardiography cohort study. *PLoS One*. 2022 Dec 15;17(12):e0278406.
- 983 104. Zhou B, Carrillo-Larco RM, Danaei G, Riley LM, Paciorek CJ, Stevens GA, et al. Worldwide trends in  
984 hypertension prevalence and progress in treatment and control from 1990 to 2019: a pooled  
985 analysis of 1201 population-representative studies with 104 million participants. *The Lancet*. 2021  
986 Sep;398(10304):957–80.
- 987 105. Jiang SZ, Lu W, Zong XF, Ruan HY, Liu Y. Obesity and hypertension. *Exp Ther Med*. 2016  
988 Oct;12(4):2395–9.
- 989 106. Bager JE, Manhem K, Andersson T, Hjerpe P, Bengtsson-Boström K, Ljungman C, et al.  
990 Hypertension: sex-related differences in drug treatment, prevalence and blood pressure control  
991 in primary care. *J Hum Hypertens*. 2023 Aug;37(8):662–70.
- 992 107. Lamloom D, Fassio F, Osetinsky B, Tediosi F. Care Cascades for Hypertension in Low-Income  
993 Settings: A Systematic Review and Meta-Analysis. *Int J Public Health*. 2023 Oct 12;68:1606428.
- 994 108. Price AJ, Crampin AC, Amberbir A, Kayuni-Chihana N, Musicha C, Tafatatha T, et al. Prevalence of  
995 obesity, hypertension, and diabetes, and cascade of care in sub-Saharan Africa: a cross-sectional,  
996 population-based study in rural and urban Malawi. *The Lancet Diabetes & Endocrinology*. 2018  
997 Mar;6(3):208–22.
- 998 109. Wade AN, Maposa I, Agongo G, Asiki G, Boua P, Choma SSR, et al. Diabetes care cascade and  
999 associated factors in 10 700 middle-aged adults in four sub-Saharan African countries: a cross-  
1000 sectional study. *BMJ Open*. 2023 Apr 1;13(4):e069193.

- 1001 110. Brennan AT, Lauren E, Bor J, George JA, Chetty K, Mlisana K, et al. Gaps in the type 2 diabetes care  
1002 cascade: a national perspective using South Africa’s National Health Laboratory Service (NHLS)  
1003 database. BMC Health Serv Res. 2023 Dec 21;23:1452.
- 1004 111. ICMJE | Recommendations | Defining the Role of Authors and Contributors [Internet]. [cited 2024  
1005 Jun 3]. Available from: [https://www.icmje.org/recommendations/browse/roles-and-  
1006 responsibilities/defining-the-role-of-authors-and-contributors.html](https://www.icmje.org/recommendations/browse/roles-and-responsibilities/defining-the-role-of-authors-and-contributors.html)
- 1007