

## Evaluating the Effectiveness of Nirsevimab in Reducing Pediatric RSV Hospitalizations in Spain

Jimeno S.<sup>1</sup>, Peláez A.<sup>2,3</sup>, Labourt A.<sup>1</sup>, Acuña F.<sup>1</sup>, Linares L.<sup>1</sup>, Llana Martín I.<sup>4</sup>, Calle A.<sup>1</sup>, Natalini Martínez S.<sup>1</sup>

<sup>1</sup>Departamento de Pediatría, Hospital HM Puerta del Sur, HM Hospitales. Unidad de Vacunas, HM Hospitales. Facultad de Ciencias de la Salud-HM Hospitales, Universidad Camilo José Cela. Instituto de Investigación Sanitaria HM Hospitales, Madrid, España.

<sup>2</sup>Departamento de Unidad de Análisis de Datos. Fundación de Investigación HM Hospitales. Facultad de Ciencias de la Salud-HM Hospitales, Universidad Camilo José Cela. Instituto de Investigación Sanitaria HM Hospitales, Madrid, España.

<sup>3</sup>Centro de Investigación en Red de Enfermedades Respiratorias (CIBERES), Instituto de Salud Carlos III (ISCIII), Madrid, España.

<sup>4</sup>Jefa del departamento de Pediatría, Hospital HM Puerta del Sur, HM Hospitales. Unidad de Vacunas, HM Hospitales. Facultad de Ciencias de la Salud-HM Hospitales, Universidad Camilo José Cela. Instituto de Investigación Sanitaria HM Hospitales, Madrid, España.

### Corresponding author details:

Name: Adrián Peláez.

Email: [apelaez@fundacionhm.com](mailto:apelaez@fundacionhm.com)

HM Hospitales

C/ Plaza del Conde del Valle de Súchil nº 2

Madrid

28015

## Evaluating the Effectiveness of Nirsevimab in Reducing Pediatric RSV Hospitalizations

### Abstract

#### Background and objective

Respiratory syncytial virus (RSV) is a major cause of hospitalization in infants. Nirsevimab has demonstrated to be a promise tool for preventing severe RSV disease. Although clinical trials have demonstrated the efficacy of Nirsevimab in preventing severe RSV disease, evidence regarding its performance in real-world clinical settings is still limited due to its recent introduction. This study aims to fill this knowledge gap by evaluating the impact of Nirsevimab in a cohort of infants and determining its effectiveness in reducing the burden of RSV disease.

#### Methods

Retrospective study of RSV hospitalizations in children under six months of age, between October 1<sup>st</sup> and March 31<sup>st</sup>, across four seasons: pre-COVID (2018-2019), COVID (2019-2020), post-COVID pre-Nirsevimab (2022-2023), and Nirsevimab season (2023-2024).

#### Results

Nirsevimab has demonstrated significant efficacy in reducing RSV-related hospitalizations in infants under six months of age. During the 2023/24 season, following the introduction of Nirsevimab, there was a substantial reduction in RSV-related lower respiratory tract infection (LRTI) hospitalizations. Among infants under 3 months of age, hospitalizations decreased by 79.3% (IRR: 0.21, 95% CI: 0.12–0.34). In infants aged 3 to 6 months, there was a 66.9% reduction (IRR: 0.33, 95% CI: 0.15–0.64). Additionally, Nirsevimab decreased the severity of RSV cases with LRTI who required support of equipment for sanitary use further reducing overall healthcare burden.

#### Conclusion

These results underscore Nirsevimab's vital role in preventing severe RSV infections and hospitalizations, especially among the most vulnerable infants, positioning it as a critical advancement in pediatric respiratory care.

**Keywords:** Respiratory syncytial virus (RSV); Nirsevimab; Pediatric respiratory care; RSV-related lower respiratory tract infection (LRTI); Healthcare burden reduction

## Introduction

Respiratory syncytial virus (RSV) is a common respiratory virus with a global distribution and a marked seasonal pattern (1). For decades, it has been the leading cause of respiratory infections worldwide during epidemic periods, with peak incidence in the Northern Hemisphere occurring between November and February (1).

The RSV poses a substantial burden on healthcare systems. Estimates suggest that globally, approximately 34 million new cases of lower respiratory tract infections (LRTI) in children under five years are attributed to RSV, leading to 3.4 million hospitalizations and around 199,000 deaths annually, predominantly in developing countries (2, 3). In Spain, RSV-related hospitalizations represent an estimated annual cost of approximately 50 million euros to the National Health System (4). The morbidity associated with RSV outside the hospital setting is less quantifiable, with estimates suggesting that more than a quarter of the total direct healthcare expenditure could be independent of hospitalization (5-7).

RSV infection affects 60-70% of children within their first year of life and more than 80% of those under two years old, also serving as a significant cause of respiratory exacerbations in older children and adults (8). In recent years, RSV infections have become a major reason for seeking care in primary healthcare and pediatric emergency settings. During epidemic periods, RSV has emerged as the primary cause of hospitalization, accounting for 70-85% of admissions for bronchiolitis (2, 8).

After many years of research, we now have preventive measures against RSV infections that have significantly impacted disease incidence in both children and adults. Nirsevimab (Beyfortus, AstraZeneca and Sanofi), a long-acting monoclonal antibody against RSV, was approved in Europe (October 31, 2022), the United Kingdom (November 9, 2022), Canada (April 19, 2023), and the United States (July 17, 2023) (9, 10). The MELODY trial reported an efficacy of Nirsevimab of 76.8% against hospitalization for RSV-related lower respiratory tract infections (LRTI) and 76.4% against non-hospitalized LRTI cases (9, 11, 12). The HARMONIE trial demonstrated an efficacy of 83.0% against RSV-related LRTI hospitalizations and 76.0% against severe LRTI in preterm infants (<29 weeks) during their first RSV season (9, 13). Currently, Nirsevimab has become the first immunization product for universal prophylaxis against RSV in infants (9, 10).

While clinical trials have demonstrated the efficacy of Nirsevimab, real-world evidence is still limited. For this reason, some very recent studies are providing preliminary results on the effectiveness and impact of the use of Nirsevimab in the 2023-2024 season in several regions of Spain (9, 14-16) and worldwide (17, 18).

This study aims to evaluate the real-world effectiveness of Nirsevimab in preventing hospitalizations due to RSV infections among infants in different epidemic seasons.

## **Material and methods**

A retrospective multicentre observational study of pediatric patients diagnosed with RSV infection during four distinct time periods, epidemic periods, was conducted. These periods span between 01 October 2018 and 31 March 2019 (designated as pre-COVID season), between 01 October 2019 and 31 March 2020 (COVID season), between 01 October to 31 March 22-23 (Post-COVID season prior to Nirsevimab) and between 01 October to 31 March 23-24 (Nirsevimab season).

Patients less than 6 months old at the beginning of the epidemic period were selected as inclusion criteria (01 October of each season respectively) and those born during the epidemic period (01 October to 31 March of each season) who were hospitalised for RSV infection confirmed by antigenic testing and/or polymerase chain reaction (PCR). Patients who did not meet these inclusion criteria were excluded.

Several socio-demographic and clinical variables were collected as well as the results of antigenic and polymerase chain reaction (PCR) tests for respiratory viruses. In addition, the different pharmacological treatments used, oxygen therapy requirements and the need for invasive or non-invasive ventilation were collected. The variables were extracted from the Doctoris computerized medical record, previously anonymizing all patient identifiers to protect confidentiality and privacy. The study protocol was approved by the local ethics committee approval number 24.06.2359. The document followed STROBE (<http://www.strobe-statement.org/>) recommendations for observational studies.

To determine the minimum sample size required to assess the vaccine's effect (with a 75% risk reduction), a calculation was performed with a significance level of 1% and a statistical power of 99%. The calculation indicated that 68 patients were needed. However, to account for potential participant dropouts and ensure the robustness of the

model, the sample was increased to include the maximum number of patients available in our database, resulting in a total of 646 patients.

A person-time approach was used for each individual in the statistical analyses. A preliminary descriptive analysis of patient characteristics was performed, calculating measures of central tendency and dispersion for quantitative variables, and counts and percentages for qualitative variables. Differences between groups were assessed using normality tests (Shapiro-Wilk, Kolmogorov-Smirnov) and homogeneity tests (Levene), with parametric (ANOVA, Student's t-test) or non-parametric (Kruskal-Wallis, Wilcoxon rank-sum) tests applied as appropriate. For qualitative variables,  $\chi^2$  or Fisher's exact tests were used.

Poisson regression models with robust variance and Cox proportional hazards models, adjusted, were employed. The association of various sociodemographic and comorbidities covariates with the outcome variable were evaluated in univariate analyses, and those with significant results were included in the multivariable model. The efficacy of Nirsevimab against RSV hospitalization was calculated as  $(1 - \text{point estimate}) \times 100$ , with 95% confidence intervals (CI). Only participants with complete data and follow-up time greater than zero were included. Hospitalization rates, both overall and by age groups (<3 months and 3-6 months) per 10,000 hospitalized individuals in the same age group, were calculated for each of the four study seasons. The incidence ratio was obtained by comparing these rates to the Post-COVID prior to Nirsevimab season, and the percentage change was calculated as  $(\text{rate difference} / \text{Post-COVID prior to Nirsevimab rate}) \times 100$ . Data analysis and visualization were conducted using RStudio.

## Results

### **Socio-Demographic, Clinical, and Treatment Data Across Different RSV Seasons**

A total of 646 unique patients were included in the study, distributed as follows: 292 (45.2%) in the Pre-COVID season, 78 (12.1%) in the COVID season, 199 (30.8%) in the Post-COVID season prior to Nirsevimab, and 77 (11.9%) in the Nirsevimab season. These 646 unique patients were drawn from HM Modelo-HM Belén hospitals (73 patients), HM Montepíncipe (215 patients), HM Nens (81 patients), and HM Puerta del Sur (277 patients). A descriptive analysis was performed on the socio-demographic, clinical, and treatment data of the patients, comparing the four RSV seasons (**Table 1**). The overall mean age was 4.2 months ( $\pm 3.6$ ). Patients in the Nirsevimab season had a significantly higher mean age (6.4 months  $\pm 4.3$ ) ( $p < 0.001$ ). A notable reduction in the

number of patients under 3 months and those aged 3-6 months was observed during the Nirsevimab season. Regarding the length of hospital and ICU stay, significant differences were found, with shorter stays observed in the Nirsevimab and Pre-COVID seasons, respectively ( $p \leq 0.002$ ). Concerning the distribution of comorbidities, only respiratory and bronchial pathologies, as well as low birth weight, showed significant differences during the Nirsevimab season ( $p \leq 0.048$ ).

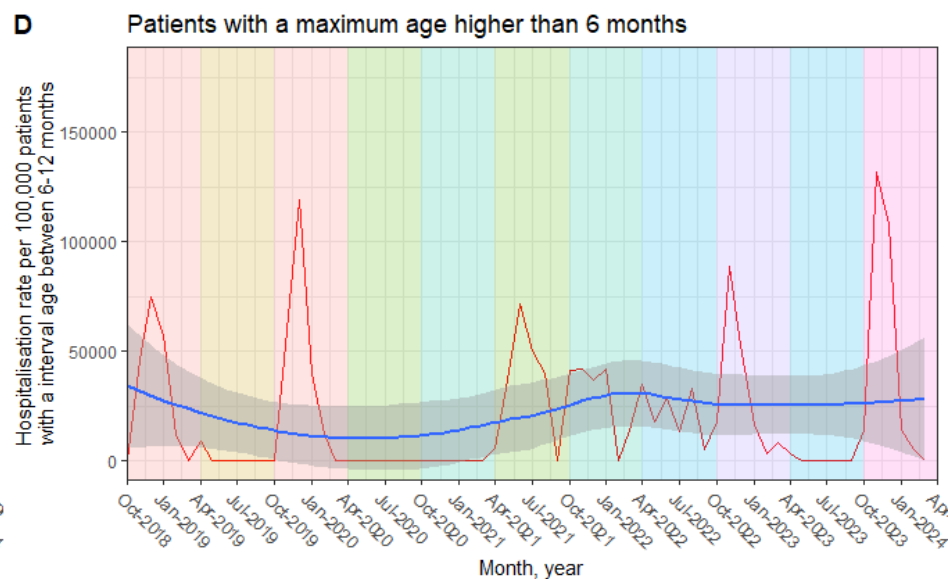
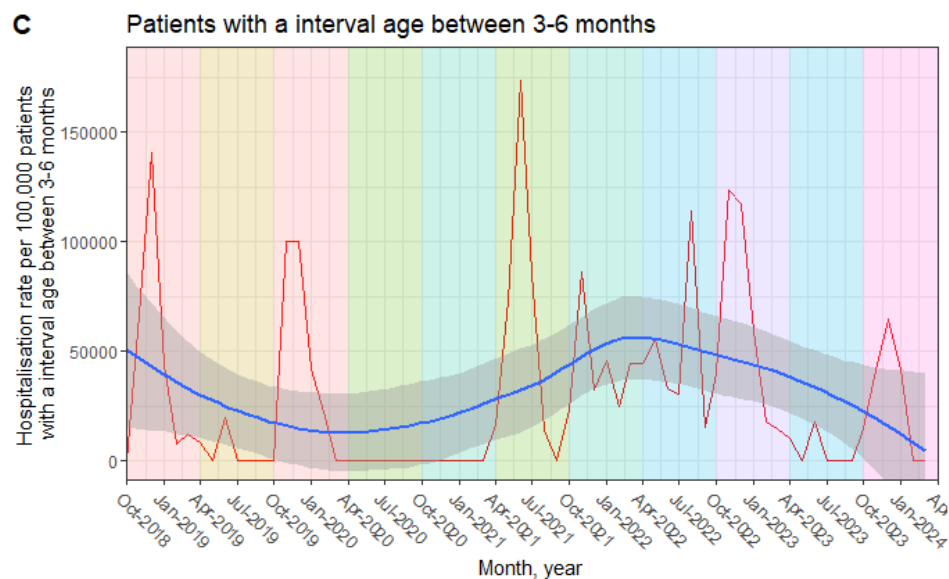
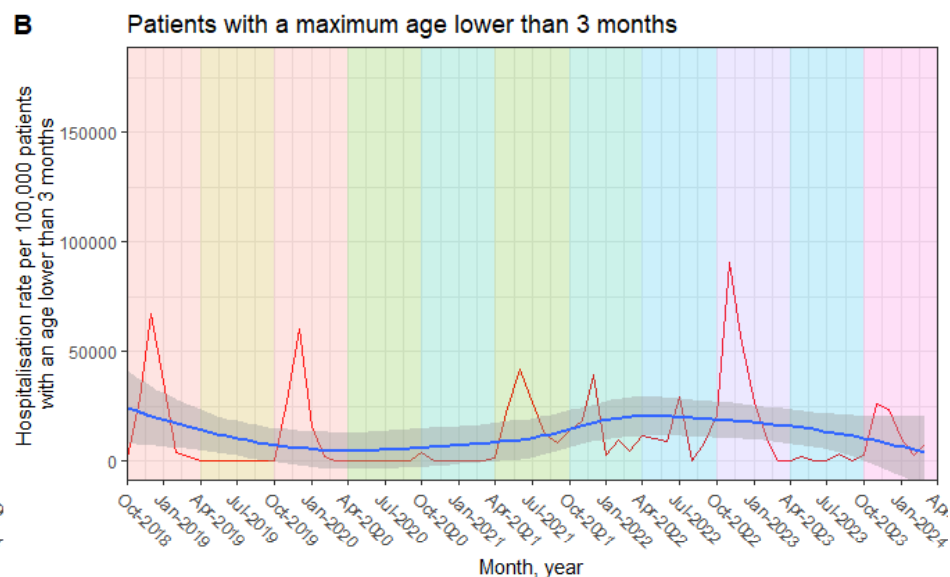
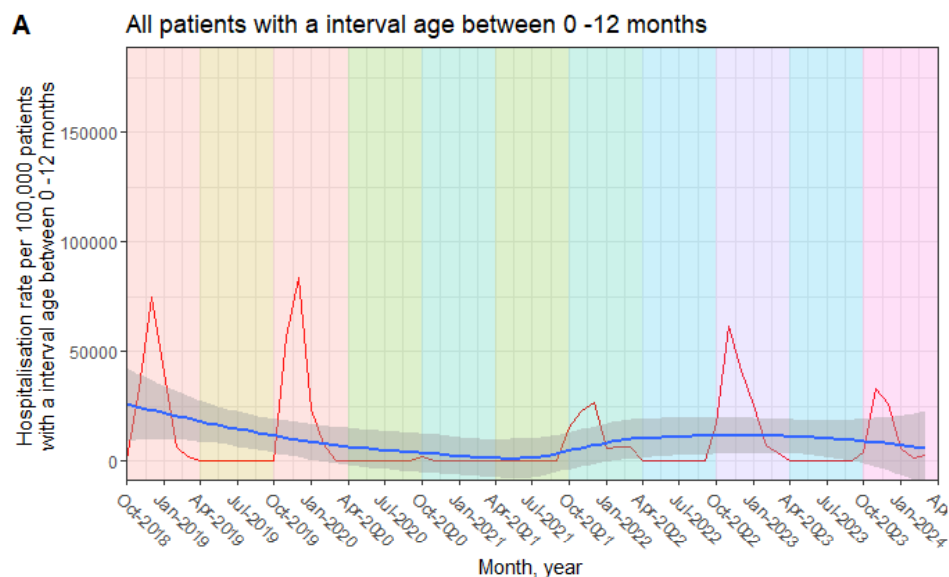
**Table 1.** Overall descriptive and comparative socio-demographic, clinical and treatment data in total and for each of the RSV seasons.

Item	Total (n=646)	Pre-COVID (n1=292)	COVID (n2=78)	Post-COVID prior to Nirsevimab (n3=199)	Nirsevimab (n4=77)	p-value
<b>Age (months)</b>	4.2 ( $\pm 3.6$ )	3.8 ( $\pm 3.3$ )	4.1 ( $\pm 3.3$ )	4.0 ( $\pm 3.5$ )	<b>6.4 (<math>\pm 4.3</math>)</b> ↑	<b>&lt;0.001</b>
≤3 months	281 (43.5%)	136 (46.6%)	34 (43.6%)	89 (44.7%)	<b>22 (28.6%)</b> ↓	<b>&lt;0.001</b>
3-6 months	188 (29.1%)	92 (31.5%)	26 (33.3%)	59 (29.6%)	<b>11 (14.3%)</b> ↓	<b>0.021</b>
>6 months	177 (27.4%)	64 (21.9%)	18 (23.1%)	51 (25.6%)	<b>44 (57.1%)</b> ↑	<b>0.024</b>
<b>Sex [Male]</b>	356 (55.1%)	155 (53.1%)	48 (61.5%)	117 (58.8%)	36 (46.8%)	0.168
<b>Stay</b>	5.6 ( $\pm 4.6$ )	5.6 ( $\pm 3.6$ )	5.2 ( $\pm 3.9$ )	6.1 ( $\pm 5.0$ )	<b>5.1 (<math>\pm 6.8</math>)</b> ↓	<b>0.011</b>
<10 days	550 (85.1%)	249 (85.3%)	66 (84.6%)	166 (83.4%)	<b>69 (89.6%)</b> ↑	<b>&lt;0.001</b>
10-30 days	94 (14.6%)	43 (14.7%)	12 (15.4%)	32 (16.1%)	<b>7 (9.1%)</b> ↓	<b>0.009</b>
>30 days	2 (0.3%)	0 (0.0%)	0 (0.0%)	1 (0.5%)	1 (1.3%)	0.538
<b>ICU</b>	197 (30.5%)	95 (32.5%)	20 (25.6%)	62 (31.2%)	20 (26.0%)	0.527
<b>ICU Stay</b>	5.3 (4.3)	<b>4.1 (<math>\pm 3.0</math>)</b> ↓	6.0 ( $\pm 3.8$ )	6.5 ( $\pm 5.0$ )	6.6 ( $\pm 6.4$ )	<b>0.004</b>
<10 days	169 (86.2%)	<b>91 (95.8%)</b> ↑	16 (80.0%)	47 (77.0%)	15 (75.0%)	<b>0.002</b>
10-30 days	27 (13.8%)	<b>4 (4.2%)</b> ↓	4 (20.0%)	14 (23.0%)	5 (25.0%)	<b>0.003</b>
>30 days	0 (0%)	0 (0%)	0 (0%)	0 (0%)	0 (0%)	1.000
<b>Comorbidities</b>						
<b>Neonatal respiratory problems</b>	96 (14.9%)	45 (15.4%)	7 (9.0%)	31 (15.6%)	13 (16.9%)	0.469
<b>APLV</b>	4 (0.6%)	2 (0.7%)	0 (0%)	1 (0.5%)	1 (1.3%)	0.770
<b>Atopy</b>	3 (0.5%)	2 (0.7%)	0 (0%)	0 (0%)	1 (1.3%)	0.430
<b>Cardiopathies</b>	9 (1.4%)	2 (0.7%)	0 (0%)	4 (2.0%)	3 (3.9%)	0.101
<b>Syndromes</b>	2 (0.3%)	0 (0.0%)	0 (0.0%)	1 (0.5%)	1 (1.3%)	0.280
<b>Immunodeficiencies</b>	3 (0.5%)	1 (0.3%)	0 (0%)	1 (0.5%)	1 (1.3%)	0.654
<b>Twins</b>	7 (1.1%)	6 (2.1%)	0 (0%)	0 (0%)	1 (1.3%)	0.131
<b>Premature</b>	30 (4.6%)	16 (5.5%)	1 (1.3%)	7 (3.5%)	6 (7.8%)	0.191
<b>Low birth weight</b>	19 (2.9%)	6 (2.1%)	1 (1.3%)	6 (3.0%)	<b>6 (7.8%)</b> ↑	<b>0.048</b>

Data are shown as n (%), mean  $\pm$ sd. Significant comparisons ( $p < 0.05$ ) are marked in bold and asterisk. NIMV: Non-invasive mechanical ventilation, IMV: invasive mechanical ventilation.

### Hospitalization Patterns in Children Under 1 Year Due to RSV Infections Across Different Seasons

In Figure 1, four distinct patterns in the hospitalization rate due to RSV infections in children under 1 year of age (per 10,000 children) can be observed. Firstly, from the 2018/19 season (October-March) to the 2020/21 season, a clear seasonal trend in hospitalization rates is evident. This behavior corresponds to the pre-COVID period and is consistent across all age groups analyzed (**Figures 1B-1C**). Between the 2020/21 and 2021/22 seasons, the pattern becomes chaotic, with no defined seasonality. This change aligns with the COVID period, and the group of hospitalized children over 6 months shows fewer peak values compared to other age groups. In the 2022/23 season, marking the post-COVID and prior to Nirsevimab period, seasonality is restored both in the overall patient group and across the three age groups, resembling the pattern observed in the initial season. A notable peak in hospitalization is seen in patients under 3 months of age. Finally, in the 2023/24 season, corresponding to the Nirsevimab period, another seasonal RSV peak is observed across all groups. However, this peak is lower for children under 3 months and those aged 3 to 6 months compared to previous seasonal peaks. Nevertheless, in patients over 6 months, the peak value remains similar to that observed in earlier seasons.





**Figure 1.** RSV hospitalization rate in children under 1 year of age (per 10,000 children). The shaded area in different colors corresponds to the seasons (01-October to 31-March) and between seasons (01-April to 30-September) of RSV before, during and post-pandemic COVID-19 (2020-22). In addition, the post-Nirsevimab season (2023-24) was included. Infection rates were plotted for all children younger than 12 months (a), younger than 3 months (B), between 3 and 6 months (C) and older than 6 months (D). A smoothing line was added to a graph to help visualize trends in the data.

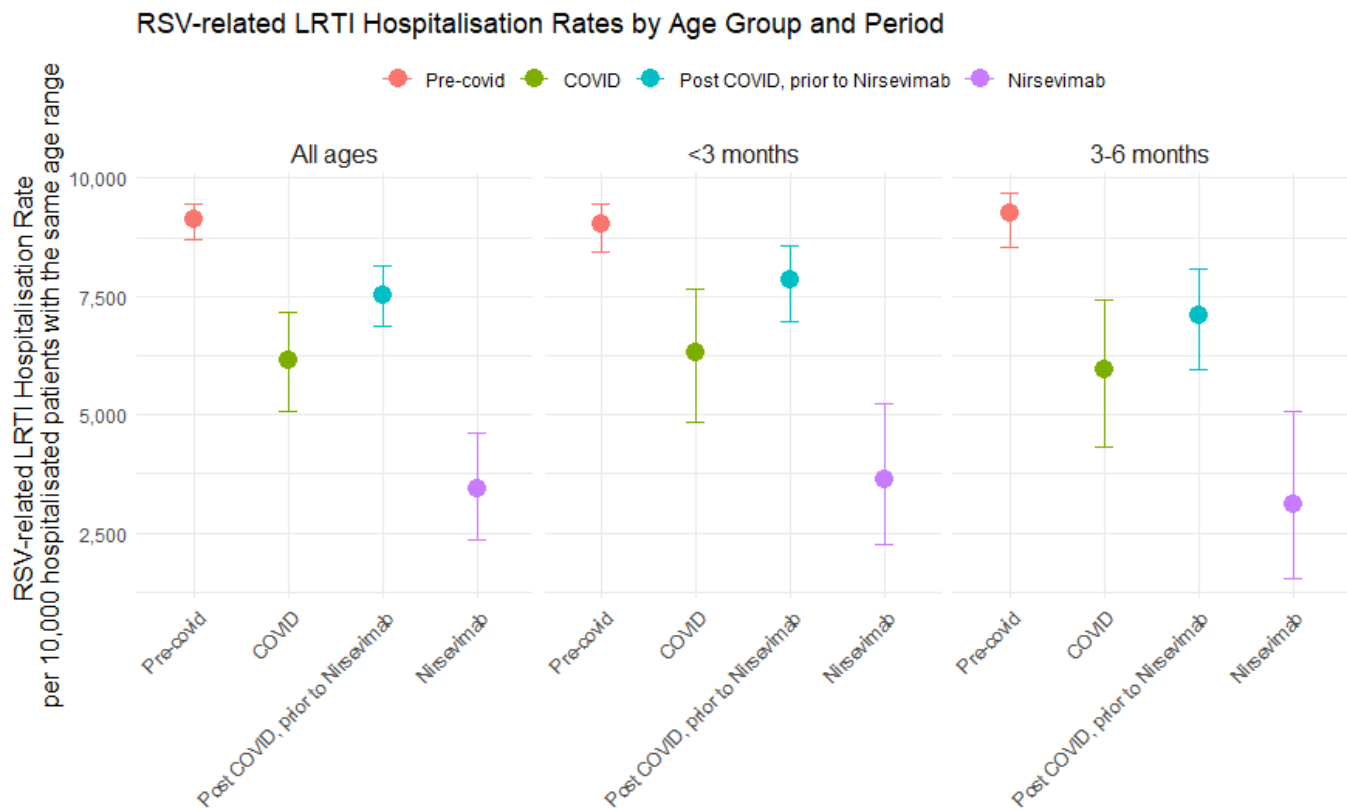
### **Impact of Nirsevimab in Hospitalization Rates for RSV Across Different Seasons**

Hospitalization rates for LRTI related to RSV were analyzed across different pandemic periods, along with the impact of Nirsevimab on these events (**Table 2; Figure 2**). Hospitalization rates were expressed per 10,000 population and broken down by age group, covering all ages and two specific categories: under 3 months and 3 to 6 months. In the Pre-COVID season, the overall hospitalization rate for RSV was 9,129 [95% CI: 8,699 – 9,453] per 10,000 population. Infants with an age between 3 to 6 months group had the highest rate at 9,263 [95% CI: 8,541 – 9,699], while the rate for infants under 3 months had the highest rate at 9,041 [95% CI: 8,443 – 9,466]. During the COVID season, the overall hospitalization rate decreased to 6,154 [95% CI: 5,075 – 7,155] per 10,000 population. Infants under 3 months showed a reduction with a rate of 6,327 [95% CI: 4,829 – 7,658], and the 3 to 6 months group had a rate of 5,952 [95% CI: 4,328 – 7,437]. In the Post-COVID season prior to Nirsevimab, the overall hospitalization rate increased to 7,540 [95% CI: 6,859 – 8,139] per 10,000 population. Infants under 3 months had a rate of 7,838 [95% CI: 6,956 – 8,563], and the 3 to 6 months group had a rate of 7,105 [95% CI: 5,951 – 8,089]. With the introduction of Nirsevimab, the overall hospitalization rate decreased significantly to 3,425 [95% CI: 2,353 – 4,628] per 10,000 population. Infants under 3 months had a rate of 3,636 [95% CI: 2,241 – 5,223], while the 3 to 6 months group had a rate of 3,103 [95% CI: 1,528 – 5,083]. The relative reduction in hospitalization rates compared to the Pre-COVID season shows a significant decrease with the administration of Nirsevimab. For all ages, the reduction was 54.6%. When evaluated by age groups, the 3 to 6 months group showed the largest reduction (56.3%), followed by the group of infants under 3 months (53.6%).

**Table 2.** Impact of Nirsevimab on RSV-related LRTI hospitalizations at each stage overall and separated by age group

RSV-related LRTI hospitalization rate per 10,000	Pre-COVID	COVID	Post-COVID prior to Nirsevimab	Nirsevimab
All ages	9,129 [8,699-9,453]	6,154 [5,075-7,155]	7,540 [6,859-8,139]	3,425 [2,353-4,628]
<3 months	9,041 [8,443-9,466]	6,327 [4,829-7,658]	7,838 [6,956-8,563]	3,636 [2,241-5,223]
3-6 months	9,263 [8,541-9,699]	5,952 [4,328-7,437]	7,105 [5,951-8,089]	3,103 [1,528-5,083]
<b>Ratio against reference season</b>				
All ages	1.2 [1.1-1.4]	0.8 [0.6-1.0]	Ref	0.5 [0.3-0.7]
<3 months	1.2 [1.0-1.4]	0.8 [0.6-1.1]	Ref	0.5 [0.3-0.8]
3-6 months	1.3 [1.1-1.6]	0.8 [0.5-1.2]	Ref	0.4 [0.2-0.9]
<b>Relative reduction (%)</b>				
All ages	+21.1%	-18.4%	Ref	-54.6%
<3 months	+15.4%	-19.3%	Ref	-53.6%
3-6 months	+30.4%	-16.2%	Ref	-56.3%

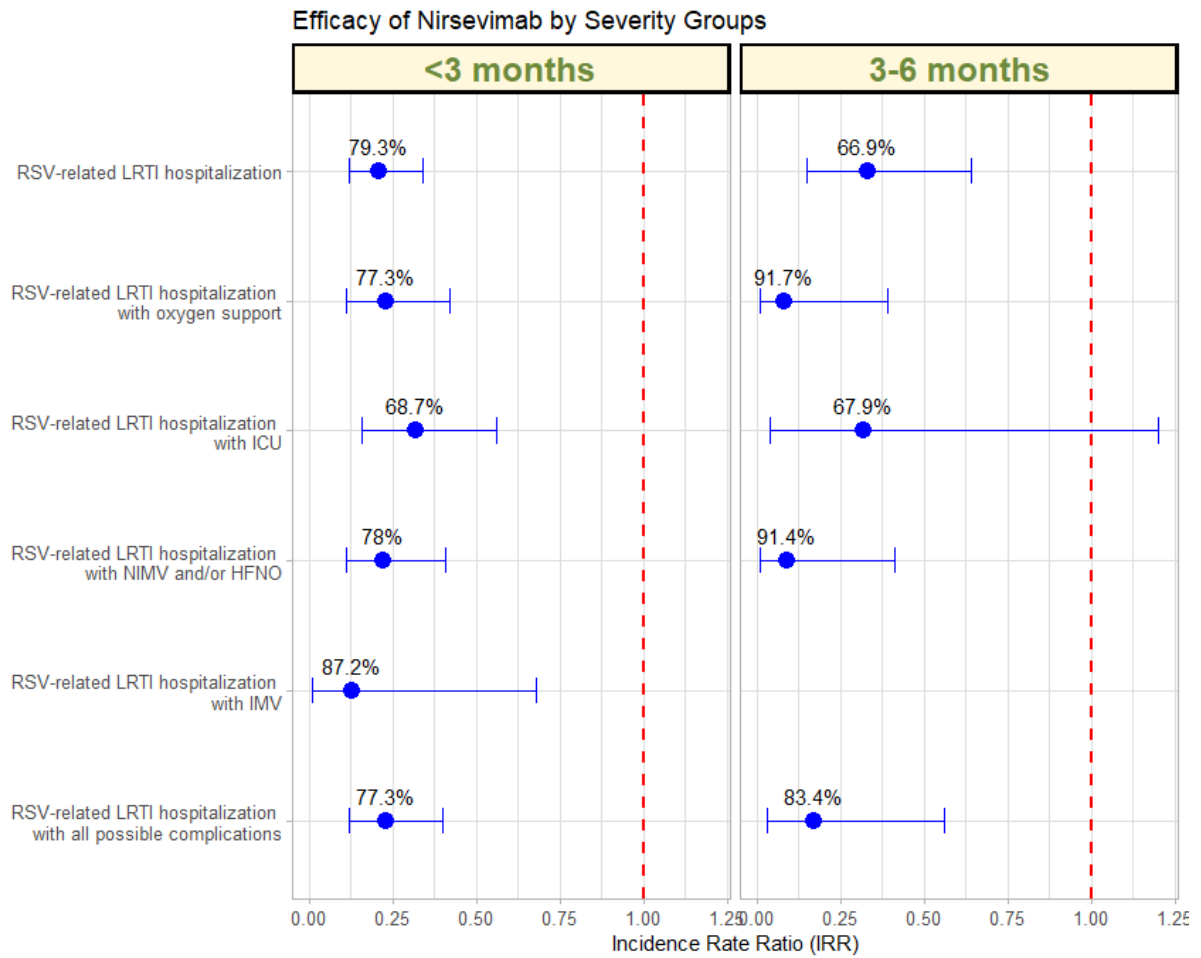
Data are shown as rate and 95% CI. Ref: reference group when comparing



**Figure 2:** RSV-related hospitalization rate by age group and period. Each panel represents a specific age group. Dots indicate the hospitalization rate per 10,000 hospitalized patients with the same age range, with error bars showing the 95% CI.

### **Efficacy of Nirsevimab Against RSV-severity**

The efficacy of Nirsevimab against various severity criteria for LRTI related to RSV was evaluated over two seasons, 2022-2023 (without receiving Nirsevimab) and 2023-2024 (receiving Nirsevimab) (**Table 3; Figure 3**). Efficacy was assessed using Poisson regression models, which allow for the calculation of adjusted IRR and estimate efficacy in percentage terms. The adjustment was performed for the set of variables socio-demographic and comorbidities that were associated in each case with the response variable in a univariate approach. In infants under 3 months, there was a significant 79.3% reduction in RSV-related LRTI hospitalizations (IRR: 0.21, 95% CI: 0.12–0.34), while in those aged 3-6 months, the reduction was 66.9% (IRR: 0.33, 95% CI: 0.15–0.64). For RSV-related LRTI hospitalizations requiring oxygen support, the reduction was 77.3% in infants under 3 months (IRR: 0.23, 95% CI: 0.11–0.42) and 91.7% for those aged 3-6 months (IRR: 0.08, 95% CI: 0.01–0.39). Hospitalizations involving ICU admission showed a 68.7% reduction in those under 3 months (IRR: 0.32, 95% CI: 0.16–0.56), and 67.9% in the 3–6-month group (IRR: 0.32, 95% CI: 0.04–1.20). For LRTI hospitalizations requiring NIMV and/or HFNO, a 78.0% reduction was observed in the under 3 months group (IRR: 0.22, 95% CI: 0.11–0.41) and 91.4% in the 3–6-month group (IRR: 0.09, 95% CI: 0.01–0.41). For cases requiring IMV, the reduction was 87.2% in infants under 3 months (IRR: 0.13, 95% CI: 0.01–0.68), while no events were recorded in the 3–6-month group. Finally, RSV-related LRTI hospitalization with all possible complications showed a 77.3% reduction in infants under 3 months (IRR: 0.23, 95% CI: 0.12–0.40) and an 83.4% reduction in those aged 3-6 months (IRR: 0.17, 95% CI: 0.03–0.56). Finally, for RSV hospitalization with all possible complications, a reduction of 75.8% was observed in infants under 3 months (IRR: 0.24, 95% CI: 0.14–0.39), while the reduction was 64.5% in the 3–6-month group (IRR: 0.36, 95% CI: 0.17–0.67).



**Figure 3:** Efficacy of Nirsevimab by severity group, represented by the IRR. Each point shows the IRR for a specific severity item, with error bars indicating 95% CI. The effectiveness percentages are labelled next to each point.

**Table 3.** Efficacy of Nirsevimab against different severity criteria using Poisson regression models.

Severity groups	Incidence Rate Ratio Adjusted (95% CI)	Efectiveness Adjusted % (95% CI)
<b>RSV-related LRTI hospitalization</b>		
<3 months	0.21 (0.12 – 0.34)	79.3% (65.7% – 88.3%)
3-6 months	0.33 (0.15– 0.64)	66.9% (36.2%– 84.7%)
<b>RSV-related LRTI hospitalization with oxygen support</b>		
<3 months	0.23 (0.11–0.42)	77.3% (58.3%–88.8%)
3-6 months	0.08 (0.01–0.39)	91.7% (60.8%–99.5%)
<b>RSV-related LRTI hospitalization with ICU</b>		
<3 months	0.32 (0.16–0.56)	68.7% (43.7%–83.8%)
3-6 months	0.32 (0.04–1.20)	67.9%(-20.2%–95.0%)
<b>RSV-related LRTI hospitalization with NIMV and/or HFNO</b>		
<3 months	0.22 (0.11–0.41)	78.0%(59.5%–89.1%)
3-6 months	0.09 (0.01–0.41)	91.4 (59.0%–99.5%)
<b>RSV-related LRTI hospitalization with IMV</b>		
<3 months	0.13 (0.01–0.68)	87.2% (31.8%–99.3%)
3-6 months	NA	NA
<b>RSV-related LRTI hospitalization with all possible complications</b>		
<3 months	0.23 (0.12–0.40)	77.3% (60.1%–88.1%)
3-6 months	0.17 (0.03–0.56)	83.4% (44.2%–97.3)

The efficacy of Nirsevimab was estimated from incidence rate ratios calculated using Poisson regression models, which were adjusted for season group, sex, age, hospital, previous infections, immunodeficiencies, heart disease, prematurity, neonatal respiratory problems, syndromes, twin. Only patients with non-zero follow-up time were included. All possible complication: Oxygen support, ICU, NIMV, IMV. NA: not available

## Discussion

RSV remains a leading cause of acute respiratory infections in infants, with high rates of hospitalization, especially during the first six months of life (8, 19, 20). This virus places a considerable burden on healthcare systems, with significant challenges in terms of costs and resources (2, 6). Although there have been continuous efforts to mitigate its impact, effective prevention options have been limited. The recent introduction of Nirsevimab, a long-acting monoclonal antibody, offers new hope to reduce this burden of hospitalizations (11-13, 20). The results of the MELODY, HARMONIE and NIRSE-GAL studies support its efficacy (9-13). Spain has been one of the first countries to recommend Nirsevimab prophylaxis for the 2023-2024 season (21). More than 200,000 doses of Nirsevimab have been administered during the 2023-2024 season, achieving an average coverage rate of 91.9% in newborns (range 85.7-

96.7%) (22). However, due to its recent novelty, its efficacy in actual clinical practice has yet to be confirmed, as clinical trials are conducted under controlled conditions that may not fully reflect the complexity of everyday clinical settings. This study aims to provide a more accurate picture of the efficacy of Nirsevimab in preventing RSV-related hospitalizations in infants during epidemic seasons, both before and after its recommendation for use.

Our results show that the introduction of Nirsevimab in the 2023/24 season has achieved a significant reduction in RSV LRTI-related hospitalizations in infants younger than one year, with a particularly notable impact in the pediatric population younger than three months. This is of great importance due to the increased bronchial hyperreactivity in this age group and the serious long-term complications it can generate (23, 24). This decrease is remarkable given the history of high hospitalization rates in previous seasons (**Figure 1**). However, this decrease is only showed in the age group 3 months and 3-6 months. This effect may be related to the fact that infants older than 6 months received the vaccine when the season had already begun, increasing the risk of having been infected by RSV before receiving the antibodies and, consequently, a greater number of hospitalizations. These results underscore the efficacy of Nirsevimab in the first months of life, a critical period when infants are most vulnerable to serious RSV complications.

Comparing hospitalization rates during the post-Covid Nirsevimab season with post-Covid prior to Nirsevimab season, a consistent reduction is observed, with greater protection in infants younger than 6 months: a decrease of 56.3% in the 3–6-month group and 53.6% in those younger than 3 months (**Table 2; Figure 2**). The implementation of Nirsevimab has proven highly effective not only in reducing the rate of hospitalizations due to severe respiratory infections caused by RSV but also in decreasing the severity of these hospitalizations (**Table 3; Figure 3**). This suggests that the benefit of Nirsevimab extends beyond respiratory infections, contributing to an overall reduction in the hospitalization burden.

This study presents several key strengths that reinforce the robustness of its findings. The multicenter design, which includes multiple hospitals and regions, ensures greater representativeness and generalizability of the results at a population level. Furthermore, the comparison between different periods, encompassing both pre- and post-COVID seasons, allows for the contextualization of Nirsevimab's effects in various epidemiological scenarios. The pandemic has altered the epidemiology of respiratory infections, and understanding these changes is essential for effective public health

planning (25, 26). The detailed assessment of different levels of severity of hospitalization, from different modalities of oxygen therapy and respiratory support to intensive care, provides a complete picture of the clinical impact of Nirsevimab. However, this study also faces some limitations that should be considered when interpreting its results. As a retrospective study, it is subject to potential selection biases and errors in data collection, which could compromise the accuracy of the conclusions. Although several variables were controlled in the analyses, unmeasured confounding factors that could have influenced the results cannot be ruled out. Additionally, although clinical trials have demonstrated the efficacy of Nirsevimab in preventing severe RSV disease, evidence of its performance in real clinical settings remains limited due to its recent introduction. Our study shows a similar efficacy to that described in the literature (9, 17), which supports our continued focus on achieving adequate protection of the population most vulnerable to RSV. However, it is essential to conduct additional long-term studies in different clinical settings and different population groups to validate the efficacy of Nirsevimab and better understand its impact on RSV prevention in real-world settings. This fact will help to implement appropriate interventions, such as the use of Nirsevimab in vulnerable population groups or RSV vaccination in pregnant women, to mitigate the burden on health care systems.

In conclusion, the recent introduction of Nirsevimab has demonstrated a promising reduction in RSV-related hospitalizations, particularly in infants younger than six months, as well as a decrease in the severity of hospitalizations. Continued monitoring and research are essential to fully understand its long-term impact and to refine preventive strategies in the pediatric population.

## References

1. VIRUS RESPIRATORIO SINICIAL (VRS). Protocolos Asociación Española de Pediatría. Available from: <https://www.aeped.es/sites/default/files/documentos/vrs.pdf>.
2. Florin TA, Plint AC, Zorc JJ. Viral bronchiolitis. *The Lancet*. 2017;389(10065):211-24.
3. Li Y, Wang X, Blau DM, Caballero MT, Feikin DR, Gill CJ, et al. Global, regional, and national disease burden estimates of acute lower respiratory infections due to respiratory syncytial virus in children younger than 5 years in 2019: a systematic analysis. *The Lancet*. 2022;399(10340):2047-64.
4. Gea-Izquierdo E, Gil-Prieto R, Hernández-Barrera V, Gil-de-Miguel Á. Respiratory syncytial virus-associated hospitalization in children aged < 2 years in Spain from 2018 to 2021. *Human Vaccines & Immunotherapeutics*. 2023;19(2):2231818.



5. Falsey AR, McElhaney JE, Beran J, Van Essen GA, Duval X, Esen M, et al. Respiratory syncytial virus and other respiratory viral infections in older adults with moderate to severe influenza-like illness. *J Infect Dis*. 2014;209(12):1873-81.
6. Martín-Torres F, Carmo M, Platero L, Drago G, López-Belmonte JL, Bangert M, et al. Clinical and economic burden of respiratory syncytial virus in Spanish children: the BARI study. *BMC Infectious Diseases*. 2022;22(1):759.
7. Li X, Hodgson D, Flaig J, Kieffer A, Herring WL, Beyhaghi H, et al. Cost-effectiveness of respiratory syncytial virus preventive interventions in children: a model comparison study. *Value in health*. 2023;26(4):508-18.
8. Martín-Torres F, Carmo M, Platero L, Drago G, López-Belmonte JL, Bangert M, et al. Clinical and economic hospital burden of acute respiratory infection (BARI) due to respiratory syncytial virus in Spanish children, 2015–2018. *BMC Infectious Diseases*. 2023;23(1):385.
9. Ares-Gómez S, Mallah N, Santiago-Pérez M, Pardo-Seco J, Pérez-Martínez O, Otero-Barrós M, et al. Effectiveness and impact of universal prophylaxis with nirsevimab in infants against hospitalisation for respiratory syncytial virus in Galicia, Spain: initial results of a population-based longitudinal study. *The Lancet Infectious Diseases*. 2024.
10. European Medicines Agency (EMA). Product information Beyfortus® (nirsevimab). (2022). Available from: [https://www.ema.europa.eu/en/documents/product-information/beyfortus-epar-product-information\\_en.pdf](https://www.ema.europa.eu/en/documents/product-information/beyfortus-epar-product-information_en.pdf).
11. Muller WJ, Madhi SA, Seoane Nuñez B, Baca Cots M, Bosheva M, Dagan R, et al. Nirsevimab for prevention of RSV in term and late-preterm infants. *N Engl J Med*. 2023;388(16):1533-4.
12. Hammitt LL, Dagan R, Yuan Y, Baca Cots M, Bosheva M, Madhi SA, et al. Nirsevimab for prevention of RSV in healthy late-preterm and term infants. *N Engl J Med*. 2022;386(9):837-46.
13. Drysdale SB, Cathie K, Flamein F, Knuf M, Collins AM, Hill HC, et al. Nirsevimab for prevention of hospitalizations due to RSV in infants. *N Engl J Med*. 2023;389(26):2425-35.
14. Ezpeleta G, Navascués A, Viguria N, Herranz-Aguirre M, Juan Belloc SE, Gimeno Ballester J, et al. Effectiveness of nirsevimab immunoprophylaxis administered at birth to prevent infant hospitalisation for respiratory syncytial virus infection: A population-based cohort study. *Vaccines*. 2024;12(4):383.
15. López-Lacort M, Muñoz-Quiles C, Mira-Iglesias A, López-Labrador FX, Mengual-Chuliá B, Fernández-García C, et al. Early estimates of nirsevimab immunoprophylaxis effectiveness against hospital admission for respiratory syncytial virus lower respiratory tract infections in infants, Spain, October 2023 to January 2024. *Eurosurveillance*. 2024;29(6):2400046.
16. Barbas Del Buey, José Francisco, Íñigo Martínez J, Gutiérrez Rodríguez MÁ, Alonso García M, Sánchez-Gómez A, Lasheras Carbajo MD, et al. The effectiveness of



nirsevimab in reducing the burden of disease due to respiratory syncytial virus (RSV) infection over time in the Madrid region (Spain): a prospective population-based cohort study. *Frontiers in Public Health*. 2024;12:1441786.

17. Ernst C, Bejko D, Gaasch L, Hannelas E, Kahn I, Pierron C, et al. Impact of nirsevimab prophylaxis on paediatric respiratory syncytial virus (RSV)-related hospitalisations during the initial 2023/24 season in Luxembourg. *Eurosurveillance*. 2024;29(4):2400033.

18. Moline HL. Early Estimate of Nirsevimab Effectiveness for Prevention of Respiratory Syncytial Virus–Associated Hospitalization Among Infants Entering Their First Respiratory Syncytial Virus Season—New Vaccine Surveillance Network, October 2023–February 2024. *MMWR.Morbidity and mortality weekly report*. 2024;73.

19. Troeger C, Blacker B, Khalil IA, Rao PC, Cao J, Zimsen SR, et al. Estimates of the global, regional, and national morbidity, mortality, and aetiologies of lower respiratory infections in 195 countries, 1990–2016: a systematic analysis for the Global Burden of Disease Study 2016. *The Lancet infectious diseases*. 2018;18(11):1191-210.

20. Francisco L, Cruz-Cañete M, Pérez C, Couceiro JA, Otheo E, Launes C, et al. Nirsevimab para la prevención de la enfermedad por virus respiratorio sincitial en niños. *Posicionamiento de la Sociedad Española de Infectología Pediátrica. Anales de Pediatría*; Elsevier; 2023.

21. Recomendaciones de utilización de nirsevimab frente a virus respiratorio sincitial para la temporada 2023-2024. Ministerio de Sanidad. Available from: [https://www.sanidad.gob.es/en/areas/promocionPrevencion/vacunaciones/comoTrabajamos/docs/Nirsevimab\\_2023.pdf](https://www.sanidad.gob.es/en/areas/promocionPrevencion/vacunaciones/comoTrabajamos/docs/Nirsevimab_2023.pdf).

22. Recomendaciones de utilización de nirsevimab para la temporada 2024-2025 en España. Consejo Interterritorial. Sistema Nacional de Salud. Available from: <https://www.sanidad.gob.es/areas/promocionPrevencion/vacunaciones/comoTrabajamos/docs/Nirsevimab.pdf>.

23. Moral L, Monzó MA, Benito JCJ, Casanueva CO, Calzón NMP, García MIP, et al. Asma en pediatría: consenso REGAP. *Anales de pediatría*; Elsevier; 2021.

24. García García ML, Korta Murua J, Callejón Callejón A. Bronquiolitis aguda viral. *Protoc diagn ter pediatr*. 2017;1(8):85-102.

25. Soriano JB, Peláez A, Fernández E, Moreno L, Ancochea J. The Emergence of COVID-19 as a Cause of Death in 2020 and its Effect on Mortality by Diseases of the Respiratory System in Spain: Trends and Their Determinants Compared to 2019. *Arch Bronconeumol*. 2022;58:13-21.

26. Concepción Delgado-Sanz, Clara Mazagatos, Raquel Díaz, Silvia Galindo, Susana Monge, Amparo Larrauri. Informe de situación sobre la circulación del Virus Respiratorio Sincitial al inicio de la temporada 2022-2023. Centro Nacional de Epidemiología y Centro Nacional de Microbiología, Instituto de Salud Carlos III. Oct 2022.