

1 **SUPPLEMENTAL MATERIAL**

2 **Comparative Effectiveness of the mRNA-1273 and BNT162b2 COVID-19 Vaccines**  
3 **Among Adults With Underlying Medical Conditions: A Systematic Literature Review**  
4 **and Pairwise Meta-Analysis Using GRADE**

5 Xuan Wang,<sup>1</sup> Ankit Pahwa,<sup>2</sup> Mary T. Bausch-Jurken,<sup>3</sup> Anushri Chitkara,<sup>2</sup> Pawana Sharma,<sup>4</sup>  
6 Mia Malmenäs,<sup>1</sup> Sonam Vats,<sup>2</sup> Michael Gordon Whitfield,<sup>4</sup> Kira Zhi Hua Lai,<sup>5</sup> Priyadarsini  
7 Dasari,<sup>6</sup> Ritu Gupta,<sup>2</sup> Maria Nassim,<sup>7</sup> Nicolas Van de Velde,<sup>3</sup> Nathan Green,<sup>8</sup> Ekkehard  
8 Beck<sup>3</sup>

9 <sup>1</sup>ICON plc, Stockholm, Sweden; <sup>2</sup>ICON plc, Bengaluru, India; <sup>3</sup>Moderna, Inc., Cambridge,  
10 MA, USA; <sup>4</sup>ICON plc, London, United Kingdom; <sup>5</sup>ICON plc, Toronto, ON, Canada; <sup>6</sup>ICON  
11 plc, Blue Bell, PA, USA; <sup>7</sup>ICON plc, Langen, Germany; <sup>8</sup>University College London,  
12 London, United Kingdom

13 Corresponding Author: Ekkehard Beck, PhD  
14 Moderna, Inc.  
15 325 Binney St, Cambridge, MA 02142, USA  
16 Email: Ekkehard.beck@modernatx.com  
17 Phone: +49 151 68557928

18

## 19 **Appendix – Supplemental Methods**

### 20 *Decision Rules for Data Input into the Meta-Analysis*

- 21 • For the analysis in adults with at least one underlying medical condition, if a study  
22 reported data for more than one medical condition, the condition with the largest  
23 sample size was considered for analysis because it was possible that medical  
24 conditions were not mutually exclusive
- 25 • If there were data for more than one  $\geq 3$ -dose series in a study, event numbers and  
26 sample sizes for all  $\geq 3$  dose series (homologous or heterologous) were summed for  
27 each medical condition and outcome (i.e.,  $(n_1+n_2+\dots)/(N_1+N_2+\dots)$ ). These aggregate  
28 data were used for the  $\geq 3$  doses subgroups (homologous or heterologous)
- 29 • Events reported for different categories in a study were combined as applicable (eg,  
30 various age categories for <65 years old, patients on and off tyrosine kinase inhibitors,  
31 on and off immunosuppressants, holding medication and not holding medication)
- 32 • If outcomes were reported for both 2 and  $\geq 3$  doses,  $\geq 3$  doses were considered for the  
33 primary analysis
- 34 • If a study reported outcome data for different variants but additionally reported  
35 overall data for all variants combined, the overall data were used for analysis
- 36 • If a study reported outcome data for different variants without reporting overall data  
37 for all variants combined, data for the variant with the largest sample size by vaccine  
38 arm were used for analysis
- 39 • Data for SARS-CoV-2 infections occurring  $\geq 7$  days after the last vaccination were  
40 preferentially used over <7 days in the meta-analysis if available; the earliest  
41 timepoint 7 days post-vaccination was preferred (eg, if both >7 days and >14 days  
42 were reported, >7 days was used)

- 43       • For the analysis of the severe SARS-CoV-2 infection outcome, study-defined severe  
44       infection data were used preferentially. If only hospitalization and death data were  
45       available, hospitalization data were used to derive severe infections
- 46       • If the number of events was suppressed and reported as ‘<n’ (eg, <10 or ≤5), the  
47       largest possible number of events was used for the analysis (eg, 9 or 5, respectively)
- 48       • If only vaccine effectiveness (VE) data were reported for various mutually exclusive  
49       subgroups for a particular study, and sample size was not available, the VE data for  
50       all subgroups were synthesized in a meta-analysis to obtain a risk ratio for the study,  
51       which was then used as a single input from the study in the overall meta-analysis
- 52       • If a study compared a homologous series of mRNA-1273 with a heterologous series  
53       of BNT162b2, or vice-versa, the estimated treatment effect was used in the analysis of  
54       the heterologous vaccine subgroup

55

## 56 *Definitions of Medical Conditions*

### 57 *Clinically Extremely Vulnerable (CEV) Groups 1 and 2*

58 One set of base-case analyses was performed on the immunocompromised target population,  
59 which was defined as adults with a medical condition classified as CEV groups 1 or 2 [48].

60 Briefly, these medical conditions rendered patients severely (group 1) or moderately (group  
61 2) immunosuppressed.

62 In alignment with the definitions of CEV 1 and 2, the following assumptions were made for  
63 our meta-analysis:

- 64       • Only patient populations wherein the study specified active treatment or a treatment  
65       history for cancer were categorized as CEV 1 and/or 2

- 66 • Autoimmune diseases were categorized as CEV 1 and/or 2 only if there was evidence  
67 that  $\geq 90\%$  of the patients were on immunosuppressive drugs
- 68 • Patients with diabetes were considered as CEV 3 irrespective of insulin treatment  
69 because most studies did not report this information

#### 70 *Patients receiving immunosuppressive therapy*

71 Studies where  $\geq 90\%$  of the patient population was on immunosuppressive drugs were  
72 considered for analysis. Unless the percentage of patients on immunosuppressive therapies  
73 was specified, all patients with solid organ transplant, hematologic malignancies, and chronic  
74 kidney disease with hemodialysis were assumed to be receiving immunosuppressive drugs.

75 The following drugs were considered to be immunosuppressants:

- 76 • Glucocorticoids
- 77 • Cytostatics (eg, methotrexate, azathioprine, mercaptopurine)
- 78 • Antibodies (eg, monoclonal antibodies, alemtuzumab, muromonab, rituximab,  
79 belatacept)
- 80 • Drugs acting on immunophilins (eg, cyclosporine, tacrolimus, sirolimus, everolimus,  
81 zotarolimus)
- 82 • Other drugs (eg, interferons, opioids, tumor necrosis factor-binding proteins,  
83 mycophenolate, small biological agents)

#### 84 *Cancers*

85 Study populations with hematologic malignancies, solid tumors, mixed cancers, or  
86 unspecified cancer types were included in this subgroup.

87 *Cardiovascular-metabolic-renal disorders*

88 Study populations with cardiovascular disease (including hypertension), type 1 or type 2  
89 diabetes, obesity, and chronic kidney disease with or without hemodialysis were included in  
90 this subgroup.

91 *Mixed conditions*

92 Mixed conditions includes a combination of various medical conditions including  
93 hypertension, diabetes, chronic lung disease, immunodeficiencies, heart disease, renal  
94 disease, liver disease, immunosuppression. It additionally includes a mixed population of  
95 organ and stem cell transplant.

96 *Immunocompromised*

97 Populations defined as “immunocompromised” in the study and/or receiving  
98 immunosuppressive therapies.

99 **Table S1** Databases and search strings used for the systematic literature review

<b>Embase</b>	
<b>No.</b>	<b>Search terms</b>
1	exp coronavirus disease 2019/
2	exp Coronavirus infection/ or exp Coronavirus/ or exp Coronavirinae/
3	exp Coronaviridae infection/ or exp Coronaviridae/
4	exp SARS coronavirus/ or exp SARS-related coronavirus/
5	exp Severe acute respiratory syndrome coronavirus 2/
6	(sars cov2 or sars cov 2 or sarscov2 or sarscov 2 or sars-cov-2 or sarscov-2).ti,ab,tw.
7	Severe acute respiratory syndrome coronavirus.ti,ab,tw.
8	or/1-7
9	exp elasomeran/
10	exp imelasomeran/ or exp elasomeran plus imelasomeran/
11	exp davesomeran/ or exp davesomeran plus elasomeran/
12	(Moderna or Spikevax or elasomeran or imelasomeran or davesomeran or andusomeran or mRNA-1273 or mRNA1273 or mRNA 1273 or messenger* or messenger RNA-1273 or messenger RNA 1273 or messenger RNA1273).ti,ab,tw,kf,mp.
13	or/9-12
14	exp bnt 162 vaccine/
15	exp tozinameran/
16	exp riltozinameran/ or exp riltozinameran plus tozinameran/
17	exp famtozinameran/ or exp famtozinameran plus tozinameran/
18	(Pfizer or PfizerBioNTech or Pfizer-BioNTech or pfizer* or 'BioNTech' or BioNTech-Pfizer or COMIRNATY or Tozinameran or riltozinameran or famtozinameran or raxtozinameran or BNT162b2 or BNT*).ti,ab,tw,kf,mp.

19	or/14-18
20	13 and 19
21	8 and 20
22	exp comparative effectiveness/ or exp clinical effectiveness/
23	(efficacy or effectiveness or infection or infected or infections).ti,ab,tw.
24	exp hospital mortality/ or exp mortality/
25	(hospitali\$ed or hospitali\$ation\$1 or admission\$1).ti,ab,tw.
26	exp death/
27	exp breakthrough infection/ or exp infection fatality rate/ or exp infection rate/ or exp infection/ or exp asymptomatic infection/
28	exp reinfection/
29	exp hospital admission/ or exp hospitalization/
30	(mortality or death\$1).ti,ab,tw.
31	(symptomatic or asymptomatic or severe infection or laboratory confirmed or laboratory-confirmed or pneumonia or respiratory failure or test positive or test-positive or re-infection or re infection or reinfection or breakthrough infection or positiv* or infect*).ti,ab,tw.
32	or/22-31
33	21 and 32
34	exp autoimmune disease/ or exp steroid/ or exp rheumatic disease/ or exp autoimmunity/ or exp inflammatory disease/
35	exp psoriasis/ or exp inflammatory bowel disease/ or exp multiple sclerosis/ or exp systemic lupus erythematosus/ or exp ankylosing spondylitis/
36	(steroid* or rheumatic or rheumatoid or psoriasis or psoriatic or lupus or SLE or ulcerative colitis or crohn\$2 or Inflammatory bowel disease or IBD or Addison\$2 or Grave\$2 or Hashimoto\$2 or Myasthenia gravis or celiac or multiple sclerosis or pernicious or autoimmune or ankylosing spondylitis or immune mediated inflammatory disease or immune-mediated or immune mediated or inflammatory disease* or IMID).ti,ab,tw.

37	or/34-36
38	exp solid tumor/
39	exp malignant neoplasm/ or exp cancer/ or exp malignancy/
40	exp antineoplastic agent/ or exp neoadjuvant chemotherapy/ or *chemotherapy/ or exp cancer combination chemotherapy/ or *cancer chemotherapy/
41	(solid tumor or cancer or carcinoma or malignan* or neoplasm or chemotherap* or antineoplastic or anti-neoplastic or cytotoxic therapy or anti-cancer or anticancer).ti,ab,tw.
42	or/38-41
43	exp graft recipient/ or exp transplantation/ or exp organ transplantation/ or exp transplant/
44	(transplant* or solid organ or solid organ transplant*).ti,ab,tw.
45	or/43-44
46	exp hematologic malignancy/
47	exp stem cell/ or exp hematopoietic stem cell transplantation/
48	(transplant* or stem cell or SCT or HSCT or BMT or bone marrow).ti,ab,tw.
49	(inherited red blood cell disorders or haemoglobinopath* or hemoglobinopath* or hemolytic or haemolytic or hemato* or haemato*).ti,ab.
50	or/46-49
51	exp chronic kidney failure/ or exp chronic kidney disease/ or exp nephrotic syndrome/
52	(chronic kidney or CKD or chronic nephrotic or hemodialysis or haemodialysis).ti,ab,tw.
53	or/51-52
54	exp diabetes mellitus/ or exp non insulin dependent diabetes mellitus/ or exp insulin dependent diabetes mellitus/



55	(diabet* or T1DM or T2DM or TIDM or TIIDM or IDDM or NIDDM or type 1 diabetes or type I diabetes or type 2 diabetes or type II diabetes or insulin or non-insulin).ti,ab,tw.
56	54 or 55
57	exp cardiovascular disease/
58	exp ischemic heart disease/ or exp coronary artery disease/ or exp angina pectoris/ or exp heart rehabilitation/
59	exp hypertension/ or exp myocarditis/
60	(heart or cardiac or coronary or cardio* or CHD or high blood pressure or hypertension or myocard* or cardiovasc* or cardiomyopath* or CAD or heart failure or arterial or arter* or aortic).ti,ab,tw.
61	or/57-60
62	exp chronic liver disease/ or exp liver cirrhosis/ or exp chronic hepatitis/
63	exp non alcoholic fatty liver/ or exp alcoholic liver disease/ or exp autoimmune hepatitis/
64	exp liver transplantation/
65	(chronic liver or CLD or cirrho* or chronic hepatitis or non-alcoholic fatty liver or NAFLD or non alcoholic fatty liver or alcoholic liver or autoimmune hepatitis or chronic hepatic).ti,ab,tw.
66	or/62-65
67	exp chronic lung disease/ or exp lung embolism/ or exp chronic pulmonary aspergillosis/ or exp pulmonary hypertension/
68	exp chronic obstructive lung disease/ or exp asthma/ or exp lung dysplasia/
69	exp lung emphysema/ or exp emphysema/ or exp interstitial lung disease/ or exp fibrosing alveolitis/ or exp cystic fibrosis/
70	(asthma* or bronchiectasis or bronchopulmonary dysplasia or chronic lung or chronic pulmonary or chronic obstructive or COPD or emphysema or interstitial lung disease or idiopathic pulmonary fibrosis or pulmonary embolism or pulmonary hypertension or cystic fibrosis).ti,ab,tw.
71	or/67-70

72	exp obesity/
73	(overweight or obes*).ti,ab,tw.
74	or/72-73
75	exp dementia/ or exp Alzheimer disease/ or exp brain disease/ or exp degenerative disease/ or exp brain degeneration/ or exp neurologic disease/ or exp amyotrophic lateral sclerosis/
76	(dementia or Alzheimer\$2 or degenerative brain or degenerative mental or neurolog* or neurodegen* or amyotrophic lateral sclerosis or ALS or Parkinson\$2 or epilepsy or Guillain\$2).ti,ab,tw.
77	or/75-76
78	exp cerebrovascular accident/ or exp cerebrovascular disease/ or exp cerebrovascular malformation/
79	(stroke or cerebrovascular or cerebral or ischemic or ischaemic or ischem* or ischaem* or carotid or aneurysm* or arteriovenous or arterio-venous).ti,ab,kw.
80	or/78-79
81	exp immunocompromised patient/ or exp immune deficiency/ or exp immunosuppressive treatment/
82	(immunocompr* or immunodef* or immunosupp* or immuno-compromised or immuno-deficiency or immuno-suppression or immunomod*).ti,ab.
83	or/81-82
84	exp *comorbidity/ or exp *long term care/ or exp *chronic disease/
85	(comorbid* or risk condition or risk disorder or at-risk or at risk or high risk or high-risk or risk disease or risk comorbidity or risk disability or long term condition or long-term condition or underlying* or pre-existing* or preexisting* or medical condition).ti,ab,kw.
86	or/84-85
87	37 or 42 or 45 or 50 or 53 or 56 or 61 or 66 or 71 or 74 or 77 or 80 or 83 or 86
88	33 and 87
89	Clinical study/

90	exp case control study/
91	Family study/
92	Longitudinal study/
93	Retrospective study/
94	Prospective study/
95	Randomized controlled trials/
96	94 not 95
97	Cohort analysis/
98	(Cohort adj (study or studies)).mp.
99	(Case control adj (study or studies)).tw.
100	(follow up adj (study or studies)).tw.
101	(observational adj (study or studies)).tw.
102	(epidemiologic\$ adj (study or studies)).tw.
103	(cross sectional adj (study or studies)).tw.
104	or/89-93,96-103
105	88 and 104
106	Clinical Trial/
107	Randomized Controlled Trial/
108	controlled clinical trial/
109	multicenter study/
110	Phase 3 clinical trial/
111	Phase 4 clinical trial/
112	RANDOMIZATION/
113	Single Blind Procedure/

114	Double Blind Procedure/
115	Crossover Procedure/
116	PLACEBO/
117	randomi?ed controlled trial\$.tw.
118	rct.tw.
119	(random\$ adj2 allocat\$).tw.
120	single blind\$.tw.
121	double blind\$.tw.
122	((treble or triple) adj blind\$).tw.
123	placebo\$.tw.
124	Prospective Study/
125	or/106-124
126	Case Study/
127	case report.tw.
128	or/126-127
129	125 not 128
130	88 and 129
131	105 or 130
132	limit 131 to (human and english language)
133	limit 132 to yr="2019 -Current"

<b>Ovid MELINE®</b>	
<b>No.</b>	<b>Search terms</b>
1	exp coronavirus disease 2019/
2	exp Coronavirus infection/ or exp Coronavirus/ or exp Coronavirinae/

3	exp Coronaviridae infection/ or exp Coronaviridae/
4	exp SARS coronavirus/ or exp SARS-related coronavirus/
5	exp Severe acute respiratory syndrome coronavirus 2/
6	(sars cov2 or sars cov 2 or sarscov2 or sarscov 2 or sars-cov-2 or sarscov-2).ti,ab,tw.
7	Severe acute respiratory syndrome coronavirus.ti,ab,tw.
8	or/1-7
9	RNA vaccine/ or mRNA vaccine\$1.ti,ab,tw.
10	exp elasomeran/
11	(Moderna or Spikevax\$1 or elasomeran or imelasomeran or davesomeran or andusomeran or mRNA-1273 or mRNA1273 or mRNA 1273).ti,ab,tw,kf,mp.
12	10 or 11
13	exp tozinameran/
14	(Pfizer or PfizerBioNTech or Pfizer-BioNTech or pfizer* or 'BioNTech' or BioNTech-Pfizer or COMIRNATY or Tozinameran or BNT162b2 or BNT* or riltozinameran or famtozinameran or raxtozinameran).ti,ab,tw,kf,mp.
15	13 or 14
16	9 or (12 and 15)
17	8 and 16
18	exp comparative effectiveness/ or exp clinical effectiveness/
19	(efficacy or effectiveness or infection or infected or infections).ti,ab,tw.
20	exp hospital mortality/ or exp mortality/
21	(hospitali\$ed or hospitali\$ation\$1 or admission\$1).ti,ab,tw.
22	exp death/
23	exp breakthrough infection/ or exp infection fatality rate/ or exp infection rate/ or exp infection/ or exp asymptomatic infection/

24	exp reinfection/
25	exp hospital admission/ or exp hospitalization/
26	(mortality or death\$1).ti,ab,tw.
27	(symptomatic or asymptomatic or severe infection or laboratory confirmed or laboratory-confirmed or pneumonia or respiratory failure or test positive or test-positive or re-infection or re infection or reinfection or breakthrough infection or positiv* or infect*).ti,ab,tw.
28	or/18-27
29	17 and 28
30	exp autoimmune disease/ or exp steroid/ or exp rheumatic disease/ or exp autoimmunity/
31	exp psoriasis/ or exp inflammatory bowel disease/ or exp multiple sclerosis/ or exp systemic lupus erythematosus/
32	(steroid* or rheumatic or rheumatoid or psoriasis or psoriatic or lupus or SLE or ulcerative colitis or crohn\$2 or Inflammatory bowel disease or IBD or Addison\$2 or Grave\$2 or Hashimoto\$2 or Myasthenia gravis or celiac or multiple sclerosis or pernicious or autoimmune or ankylosing spondylitis or immune mediated inflammatory disease or immune-mediated or immune mediated or inflammatory disease* or IMID).ti,ab,tw.
33	or/30-32
34	exp Neoplasms/
35	exp malignant neoplasm/ or exp cancer/ or exp malignancy/
36	exp antineoplastic agent/ or exp neoadjuvant chemotherapy/ or *chemotherapy/ or exp cancer combination chemotherapy/ or *cancer chemotherapy/
37	(solid tumor or cancer or carcinoma or malignan* or neoplasm or chemotherap* or antineoplastic or anti-neoplastic or cytotoxic therapy or anti-cancer or anticancer).ti,ab,tw.
38	or/34-37
39	exp graft recipient/ or exp transplantation/ or exp organ transplantation/ or exp transplant/

40	(transplant* or solid organ or solid organ transplant*).ti,ab,tw.
41	or/39-40
42	exp hematologic malignancy/
43	exp stem cell/ or exp hematopoietic stem cell transplantation/
44	(transplant* or stem cell or SCT or HSCT or BMT or bone marrow).ti,ab,tw.
45	(inherited red blood cell disorders or haemoglobinopath* or hemoglobinopath* or hemolytic or haemolytic or hemato* or haemato*).ti,ab.
46	or/42-45
47	exp chronic kidney failure/ or exp chronic kidney disease/ or exp nephrotic syndrome/
48	(chronic kidney or CKD or chronic nephrotic or hemodialysis or haemodialysis).ti,ab,tw.
49	or/47-48
50	exp diabetes mellitus/ or exp non insulin dependent diabetes mellitus/ or exp insulin dependent diabetes mellitus/
51	(diabet* or T1DM or T2DM or T1DM or T1DM or IDDM or NIDDM or type 1 diabetes or type I diabetes or type 2 diabetes or type II diabetes or insulin or non-insulin).ti,ab,tw.
52	50 or 51
53	exp cardiovascular disease/
54	exp ischemic heart disease/ or exp coronary artery disease/ or exp angina pectoris/ or exp heart rehabilitation/
55	exp hypertension/ or exp myocarditis/
56	(heart or cardiac or coronary or cardio* or CHD or high blood pressure or hypertension or myocard* or cardiovasc*).ti,ab,tw.
57	or/53-56
58	exp chronic liver disease/ or exp liver cirrhosis/ or exp chronic hepatitis/

59	exp non alcoholic fatty liver/ or exp alcoholic liver disease/ or exp autoimmune hepatitis/
60	exp liver transplantation/
61	(chronic liver or CLD or cirrho* or chronic hepatitis or non-alcoholic fatty liver disease or NAFLD or alcoholic liver disease or autoimmune hepatitis or chronic hepatic).ti,ab,tw.
62	or/58-61
63	exp chronic lung disease/ or exp lung embolism/ or exp chronic pulmonary aspergillois/ or exp pulmonary hypertension/
64	exp chronic obstructive lung disease/ or exp asthma/ or exp lung dysplasia/
65	exp lung emphysema/ or exp emphysema/ or exp interstitial lung disease/ or exp fibrosing alveolitis/ or exp cystic fibrosis/
66	(asthma* or bronchiectasis or bronchopulmonary dysplasia or chronic lung or chronic pulmonary or chronic obstructive or COPD or emphysema or interstitial lung disease or idiopathic pulmonary fibrosis or pulmonary embolism or pulmonary hypertension or cystic fibrosis).ti,ab,tw.
67	or/63-66
68	exp obesity/
69	(overweight or obes*).ti,ab,tw.
70	or/68-69
71	exp dementia/ or exp Alzheimer disease/ or exp brain disease/ or exp degenerative disease/ or exp brain degeneration/ or exp neurologic disease/ or exp amyotrophic lateral sclerosis/
72	(dementia or Alzheimer\$2 or degenerative brain or degenerative mental or neurolog* or neurodegen* or amyotrophic lateral sclerosis or ALS or Parkinson\$2 or epilepsy or Guillain\$2).ti,ab,tw.
73	or/71-72
74	exp cerebrovascular disorder/ or stroke/
75	(cerebrovascular or stroke or cerebral or carotid or ischemia or ischaemia or aneurysm* or arteriovenous or arterio-venous).ti,ab,tw.



76	or/74-75
77	exp immunocompromised patient/ or exp immune deficiency/ or exp immunosuppressive treatment/
78	(immunocompr* or immunodef* or immunosupp* or immuno-compromised or immuno-deficiency or immuno-suppression or immunomod*).ti,ab,kw.
79	or/77-78
80	exp *comorbidity/ or exp *long term care/ or exp *chronic disease/
81	(comorbid* or risk condition or risk disorder or at-risk or at risk or high risk or high-risk or risk disease or risk comorbidity or risk disability or long term condition or long-term condition or underlying* or pre-existing* or preexisting* or medical condition).ti,ab,kw.
82	or/80-81
83	33 or 38 or 41 or 46 or 49 or 52 or 57 or 62 or 67 or 70 or 73 or 76 or 79 or 82
84	29 and 83
85	Epidemiologic studies/
86	exp case control studies/
87	exp cohort studies/
88	Case control.tw.
89	(cohort adj (study or studies)).tw.
90	Cohort analy\$.tw.
91	(Follow up adj (study or studies)).tw.
92	(observational adj (study or studies)).tw.
93	Longitudinal.tw.
94	Retrospective.tw.
95	Cross sectional.tw.
96	Cross-sectional studies/

97	or/85-96
98	84 and 97
99	Randomized Controlled Trials as Topic/
100	randomized controlled trial/
101	Random Allocation/
102	Double Blind Method/
103	Single Blind Method/
104	clinical trial/
105	clinical trial, phase i.pt.
106	clinical trial, phase ii.pt.
107	clinical trial, phase iii.pt.
108	clinical trial, phase iv.pt.
109	controlled clinical trial.pt.
110	randomized controlled trial.pt.
111	multicenter study.pt.
112	clinical trial.pt.
113	exp Clinical Trials as topic/
114	or/99-113
115	(clinical adj trial\$.tw.
116	((singl\$ or doubl\$ or treb\$ or tripl\$) adj (blind\$3 or mask\$3)).tw.
117	PLACEBOS/
118	placebo\$.tw.
119	randomly allocated.tw.
120	(allocated adj2 random\$.tw.

121	or/115-120
122	114 or 121
123	case report.tw.
124	letter/
125	historical article/
126	or/123-125
127	122 not 126
128	84 and 127
129	98 or 128
130	limit 129 to (english language and humans)
131	limit 130 to yr="2019 -Current"
<b>EBM Reviews – Cochrane Central Register of Controlled Trials</b>	
<b>No.</b>	<b>Search terms</b>
1	exp coronavirus disease 2019/
2	exp Coronavirus infection/ or exp Coronavirus/ or exp Coronavirinae/
3	exp Coronaviridae infection/ or exp Coronaviridae/
4	exp Severe acute respiratory syndrome coronavirus 2/
5	(sars cov2 or sars cov 2 or sarscov2 or sarscov 2 or sars-cov-2 or sarscov-2).ti,ab,tw.
6	Severe acute respiratory syndrome coronavirus.ti,ab,tw.
7	or/1-6
8	RNA vaccine/
9	mRNA vaccine\$.ti,ab,tw.
10	(Moderna or Spikevax or elasomeran or imelasomeran or davesomeran or andusomeran or mRNA-1273 or mRNA1273 or mRNA 1273).ti,ab,tw,mp.

11	(Pfizer or PfizerBioNTech or Pfizer-BioNTech or pfizer* or 'BioNTech' or BioNTech-Pfizer or COMIRNATY or Tozinameran or BNT162b2 or BNT* or riltozinameran or famtozinameran or raxtozinameran).ti,ab,tw,mp.
12	8 or 9 or (10 and 11)
13	7 and 12
<b>EBM Reviews – Cochrane Database of Systematic Reviews</b>	
<b>No.</b>	<b>Search terms</b>
1	exp coronavirus disease 2019/
2	exp Coronavirus infection/ or exp Coronavirus/ or exp Coronavirinae/
3	exp Coronaviridae infection/ or exp Coronaviridae/
4	exp Severe acute respiratory syndrome coronavirus 2/
5	(sars cov2 or sars cov 2 or sarscov2 or sarscov 2 or sars-cov-2 or sarscov-2).ti,ab,tw.
6	Severe acute respiratory syndrome coronavirus.ti,ab,tw.
7	or/1-6
8	RNA vaccine/
9	mRNA vaccine\$.ti,ab,tw.
10	(Moderna or Spikevax or elasomeran or imelasomeran or davesomeran or andusomeran or mRNA-1273 or mRNA1273 or mRNA 1273).ti,ab,tw,mp.
11	(Pfizer or PfizerBioNTech or Pfizer-BioNTech or pfizer* or 'BioNTech' or BioNTech-Pfizer or COMIRNATY or Tozinameran or BNT162b2 or BNT* or riltozinameran or famtozinameran or raxtozinameran).ti,ab,tw,mp.
12	8 or 9 or (10 and 11)
13	7 and 12

101 **Table S2** Summary of population, intervention, comparison, and outcomes used in systematic  
 102 literature review

<b>Research question</b>	Following primary series vaccination and additional vaccine doses, is mRNA-1273 more effective than BNT162b2 at preventing SARS-CoV-2 infections and COVID-19-related hospitalizations and deaths in people with underlying medical conditions?	
	<b>Include</b>	<b>Exclude</b>
<b>Population</b>	<p>Adults <math>\geq 18</math> years old with the following medical conditions:</p> <ul style="list-style-type: none"> <li>• Autoimmune disease</li> <li>• Solid tumor</li> <li>• Solid organ transplant</li> <li>• Hematologic malignancy</li> <li>• Chronic kidney disease with and without hemodialysis</li> <li>• Type 1 and type 2 diabetes</li> <li>• Cardiovascular disease (hypertension, heart failure, coronary artery disease, cardiomyopathies)</li> <li>• Cerebrovascular disease</li> <li>• Chronic liver disease (cirrhosis, non-alcoholic fatty liver disease, alcoholic liver disease, autoimmune hepatitis)</li> <li>• Neurologic condition (dementia, Alzheimer’s disease, ALS, Parkinson’s disease)</li> <li>• Chronic respiratory conditions (asthma, bronchiectasis, COPD, interstitial lung disease, pulmonary embolism, pulmonary hypertension)</li> <li>• Obesity</li> </ul> <p>Adults described as “immunocompromised” or with</p>	<ul style="list-style-type: none"> <li>• Pregnant women</li> <li>• Children</li> </ul>

	<p>primary immunodeficiency syndrome</p> <p>Adults with mixed cancers or “cancer”</p> <p>Studies that included a combination of any of the above-mentioned populations with data reported as overall effectiveness, not by specific medical condition</p> <p>Studies on the general population with <math>\geq 90\%</math> of the population with <math>\geq 1</math> medical condition</p>	
<b>Interventions/Comparators</b>	<p>mRNA COVID-19 vaccines, including strain-updated versions</p> <ul style="list-style-type: none"> <li>• Moderna COVID-19 vaccine (mRNA-1273, SPIKEVAX, elasomeran, imelasomeran, davesomeran, andusomeran)</li> <li>• Pfizer/BioNTech COVID-19 vaccine (BNT162b2, COMIRNATY, tozinameran, riltozinameran, famtozinameran, raxtozinameran)</li> </ul> <p><b>Dosing regimens</b></p> <ul style="list-style-type: none"> <li>• Homologous 2-dose series</li> <li>• Homologous and heterologous series of <math>\geq 3</math> doses with Moderna or Pfizer/BioNTech vaccines as the last dose</li> </ul>	<ul style="list-style-type: none"> <li>• Heterologous 2-dose series</li> <li>• Moderna COVID-19 vaccine as the last dose vs other COVID-19 vaccines as the last dose (eg, Janssen, AstraZeneca)</li> <li>• Pfizer/BioNTech COVID-19 vaccine as the last dose vs other COVID-19 vaccines as the last dose</li> <li>• Moderna and Pfizer/BioNTech COVID-19 vaccines as the primary series vs other COVID-19 vaccines as the primary series</li> </ul>
<b>Outcomes</b>	<ul style="list-style-type: none"> <li>• SARS-CoV-2 infection (positive test or symptomatic)</li> <li>• Symptomatic laboratory-confirmed SARS-CoV-2 infection</li> <li>• Severe SARS-CoV-2 infection</li> <li>• Breakthrough SARS-CoV-2 infection</li> </ul>	<p>Studies with only safety and immunogenicity outcomes</p>

- 
- SARS-CoV-2 re-infection
  - Hospitalization due to COVID-19 (eg, ICU, ER, or ventilation)
  - Death due to COVID-19

---

**Study design**

- Randomized and nonrandomized clinical trials
- Observational studies
- Study protocols
- Economic models
- Case reports
- Review articles

---

**Other limits**

- Any publication type (including letter, commentary, abstract, full text, poster, case series)
- English language

---

103 ALS, amyotrophic lateral sclerosis; COPD, chronic obstructive pulmonary disease; ER,  
104 emergency room; ICU, intensive care unit.

105 **Table S3** Results from risk of bias assessment based on the Newcastle-Ottawa Scale<sup>a</sup>

Cohort Studies									
Author, year	Patient selection				Comparability of cohorts <sup>f</sup>	Outcome			Total score
	Representativeness of exposed cohort <sup>b</sup>	Selection of nonexposed cohort <sup>c</sup>	Ascertainment of exposure <sup>d</sup>	Outcome not present at baseline <sup>e</sup>		Assessment of outcome <sup>g</sup>	Sufficient follow-up duration <sup>h</sup>	Adequate follow-up <sup>i</sup>	
Aslam, 2021 [72]	1 star	1 star	1 star	1 star	0 star	1 star	1 star	1 star	7 star
Bello-Chavolla, 2023 [103]	0 star	1 star	1 star	1 star	1 star	1 star	1 star	1 star	7 star
Boekel, 2022 [120]	1 star	1 star	1 star	0 star	0 star	1 star	1 star	1 star	6 star
Bonazzetti, 2023 [111]	1 star	1 star	1 star	1 star	1 star	1 star	1 star	1 star	8 star
Capuano, 2023 [112]	1 star	1 star	1 star	0 star	0 star	1 star	1 star	1 star	6 star
Chen, 2023 [124]	1 star	1 star	1 star	0 star	0 star	1 star	0 star	0 star	4 star
Cona, 2023 [113]	1 star	1 star	1 star	1 star	0 star	1 star	1 star	1 star	7 star
Cook, 2023 [74]	1 star	1 star	1 star	0 star	1 star	1 star	1 star	1 star	7 star
Dimitrov, 2023 [116]	1 star	1 star	1 star	0 star	0 star	1 star	1 star	1 star	6 star
Egri, 2023 [104]	0 star	1 star	1 star	1 star	0 star	1 star	1 star	1 star	6 star
Embi, 2021 [76]	1 star	1 star	1 star	1 star	1 star	1 star	0 star	0 star	6 star
Embi, 2023 [77]	1 star	1 star	1 star	1 star	0 star	1 star	1 star	1 star	7 star
Figueiredo, 2021 [78]	1 star	0 star	1 star	0 star	1 star	1 star	1 star	0 star	5 star
Fu, 2023 [79]	1 star	1 star	1 star	0 star	1 star	1 star	1 star	1 star	7 star



Heinzl, 2022 [118]	1 star	1 star	1 star	1 star	1 star	1 star	0 star	1 star	7 star
Hernandez, 2022 [61]	1 star	0 star	1 star	1 star	0 star	1 star	1 star	1 star	6 star
Holroyd, 2022 [80]	0 star	1 star	1 star	1 star	1 star	1 star	1 star	1 star	7 star
John, 2022 [82]	1 star	1 star	1 star	1 star	1 star	1 star	1 star	0 star	7 star
Kelly, 2022 [84]	1 star	1 star	1 star	1 star	1 star	1 star	1 star	1 star	8 star
Kelly, 2023 [83]	1 star	1 star	1 star	1 star	0 star	1 star	1 star	1 star	7 star
Khan, 2021 [85]	1 star	1 star	1 star	1 star	1 star	1 star	1 star	1 star	8 star
Kopel, 2024 [67]	1 star	1 star	1 star	1 star	1 star	1 star	1 star	1 star	8 star
Kshirsagar, 2022 [86]	1 star	1 star	1 star	0 star	0 star	1 star	1 star	1 star	6 star
Liew, 2022 [87]	1 star	0 star	1 star	0 star	0 star	1 star	1 star	1 star	5 star
Magnusson, 2021 [121]	1 star	1 star	1 star	0 star	0 star	1 star	1 star	1 star	6 star
Malinis, 2021 [88]	1 star	0 star	1 star	1 star	0 star	1 star	1 star	1 star	6 star
Manley, 2023 [62]	1 star	1 star	1 star	0 star	1 star	1 star	1 star	0 star	6 star
Marinaki, 2022 [119]	1 star	1 star	0 star	0 star	0 star	1 star	1 star	0 star	4 star
Mazuecos, 2022 [105]	1 star	1 star	1 star	1 star	1 star	1 star	1 star	1 star	8 star
Miao, 2023 [89]	1 star	1 star	1 star	1 star	1 star	1 star	0 star	0 star	6 star
Motwani, 2023 [63]	1 star	0 star	1 star	1 star	0 star	1 star	1 star	1 star	6 star
Mues, 2022 [64]	1 star	1 star	1 star	1 star	2 star	1 star	1 star	1 star	9 star

Odriozola, 2022 [106]	1 star	0 star	1 star	0 star	0 star	1 star	1 star	0 star	4 star
Parsons, 2023 [91]	1 star	0 star	1 star	1 star	1 star	1 star	1 star	1 star	7 star
Patel, 2023 [92]	1 star	1 star	1 star	0 star	1 star	1 star	1 star	1 star	7 star
Pinana, 2022 [107]	1 star	1 star	1 star	1 star	0 star	1 star	1 star	1 star	7 star
Pinana, 2023a [109]	1 star	1 star	1 star	1 star	1 star	1 star	1 star	1 star	8 star
Pinana, 2023b [108]	1 star	1 star	1 star	1 star	1 star	1 star	1 star	1 star	8 star
Pino, 2022 [114]	1 star	1 star	1 star	1 star	1 star	1 star	1 star	1 star	8 star
Quiroga, 2022 [68]	1 star	1 star	1 star	0 star	1 star	1 star	1 star	1 star	7 star
Radcliffe, 2022 [100]	1 star	0 star	1 star	1 star	0 star	1 star	0 star	0 star	4 star
Risk, 2022 [93]	1 star	1 star	1 star	1 star	1 star	1 star	1 star	1 star	8 star
Rodriguez-Mora, 2023 [110]	1 star	1 star	1 star	1 star	0 star	1 star	1 star	1 star	7 star
Rooney, 2022 [94]	1 star	1 star	0 star	1 star	0 star	1 star	1 star	1 star	6 star
Shen, 2022 [95]	1 star	1 star	1 star	1 star	0 star	1 star	1 star	1 star	7 star
Sibbel, 2022 [96]	1 star	1 star	1 star	1 star	1 star	1 star	1 star	1 star	8 star
Song, 2022 [70]	1 star	1 star	1 star	0 star	1 star	1 star	1 star	0 star	6 star
Sormani, 2022 [115]	1 star	0 star	1 star	1 star	1 star	1 star	1 star	1 star	7 star
Sun, 2024 [66]	1 star	1 star	1 star	1 star	1 star	1 star	1 star	1 star	8 star
Valkov, 2023 [117]	1 star	1 star	1 star	0 star	1 star	1 star	0 star	0 star	5 star
Wang, 2022 [98]	1 star	1 star	1 star	1 star	1 star	1 star	0 star	0 star	6 star

Wing, 2023 [102]	1 star	0 star	1 star	1 star	1 star	1 star	1 star	1 star	7 star
Yeo, 2022 [123]	0 star	1 star	1 star	1 star	1 star	1 star	1 star	1 star	7 star
Yetmar, 2022 [99]	0 star	0 star	1 star	0 star	0 star	1 star	1 star	0 star	3 star
Case Control Studies									
Author, year	Selection				Comparability <sup>n</sup>	Exposure			Total score
	Is the case definition adequate? <sup>j</sup>	Representativeness of the cases <sup>k</sup>	Selection of controls <sup>l</sup>	Definition of controls <sup>m</sup>		Ascertainment of exposure <sup>o</sup>	Same method of ascertainment for cases and controls <sup>p</sup>	Non-response rate <sup>q</sup>	
Alkadi, 2022 [69]	1 star	1 star	1 star	1 star	0 star	1 star	1 star	0 star	6 star
Butt, 2022 [73]	1 star	1 star	1 star	1 star	1 star	1 star	1 star	0 star	7 star
Grewal, 2022 [101]	1 star	1 star	1 star	1 star	1 star	1 star	1 star	1 star	8 star
Kissling, 2022 [122]	1 star	1 star	1 star	0 star	1 star	1 star	1 star	1 star	7 star

106 <sup>a</sup> Risk of bias assessment could not be performed for articles not published as full texts [65,71,75,81,90,97,125].

107 <sup>b</sup> 1 star was given if the study population was truly or somewhat representative of a community or population.

108 <sup>c</sup> 1 star was given if the nonexposed cohort was drawn from the same community as the exposed cohort. If the nonexposed cohort was drawn  
109 from a different source, no star was awarded.

110 <sup>d</sup> 1 star was given if a secure record (e.g., medical record) or a structured interview was used to ascertain exposure.

111 <sup>e</sup> 1 star was given if the outcomes were assessed at the beginning of the study.

112 <sup>f</sup> 1 star was given if the study was adjusted for age, sex, and marital status or other important factors. If the cohorts were not comparable on the  
113 basis of the design or the analysis did not control for confounders, no star was awarded.

114 <sup>g</sup> 1 star was given if the outcome was assessed by independent blind assessment or record linkage.

115 <sup>h</sup> 1 star was given if the duration of follow-up was sufficient.

116 <sup>i</sup> 1 star was given if there was complete follow-up or the lost to follow-up rate was  $\leq 20\%$ . No star was awarded if the follow-up rate was not  
117 reported.

118 <sup>j</sup> 1 star was given if the case definition was adequate and independently validated. No star was given if the case definition was based on record  
119 linkage, or self-reported, or not described.

120 <sup>k</sup> 1 star was given if the cases were consecutive or a representative series of cases. No star was given if there was a potential for selection biases  
121 or the representativeness of cases was not stated.

122 <sup>l</sup> 1 star was given if community controls were used. No star was awarded if hospital controls were used or controls were not described.

123 <sup>m</sup> 1 star was given if the control had no history of disease. No star was given if no description was provided.

124 <sup>n</sup> 1 star was given if the study controlled for the most important factor; 1 star was also given if the study controlled for any additional factors (up  
125 to 2 stars).

126 <sup>o</sup> 1 star was given if exposure was ascertained from a secure record or structured interview with blinding to the case/control status. No stars were  
127 given if this was ascertained by non-blinded interviews or written self-report or if no description was provided.

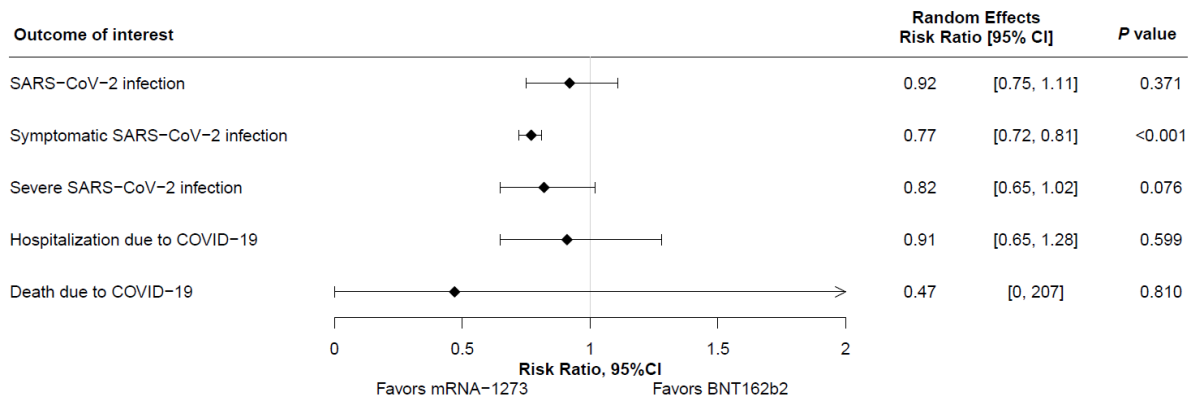
128 <sup>p</sup> 1 star was awarded if the method was the same. If a different method was used to ascertain cases and controls, no star was given.

129 <sup>q</sup> 1 star was given if the nonresponse rate was the same for both cases and controls. No star was given if the nonresponse rate was different or not  
130 described.

131

132 **Fig. S1** Summary of meta-analysis results on clinical effectiveness outcomes of the mRNA-  
 133 1273 versus BNT162b2 COVID-19 vaccines in patients with the following cancers:  
 134 hematologic malignancy, solid tumor, or mixed cancers.

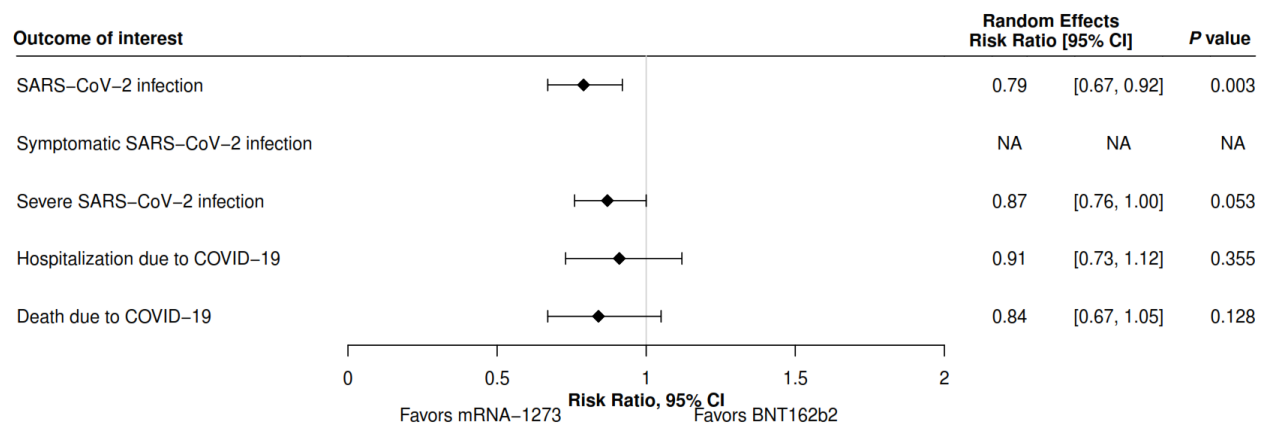
135



136

137

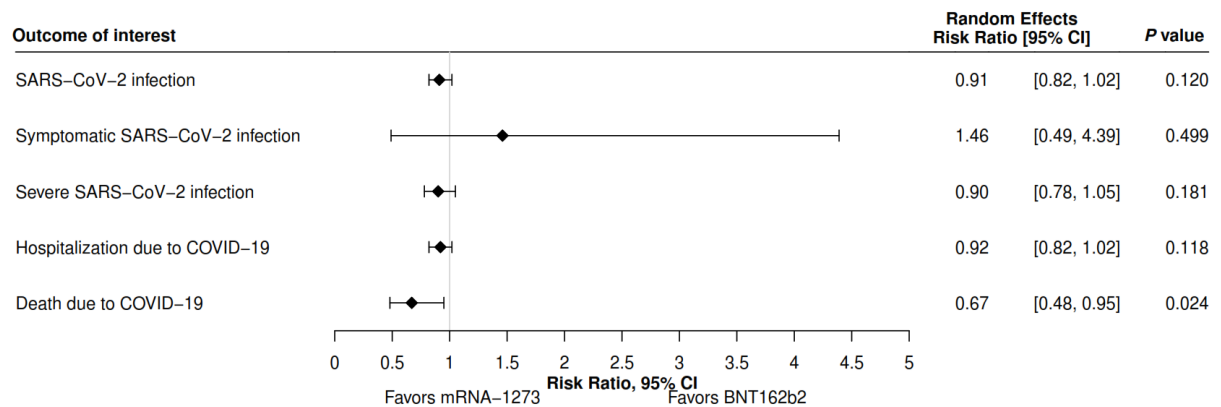
138 **Fig. S2** Summary of meta-analysis results on clinical effectiveness outcomes of the mRNA-  
 139 1273 versus BNT162b2 COVID-19 vaccines in patients with the following cardiovascular-  
 140 metabolic-renal diseases: cardiovascular disease, hypertension, type 1 or 2 diabetes, obesity,  
 141 or chronic kidney disease with or without hemodialysis. NA, not applicable.



142

143

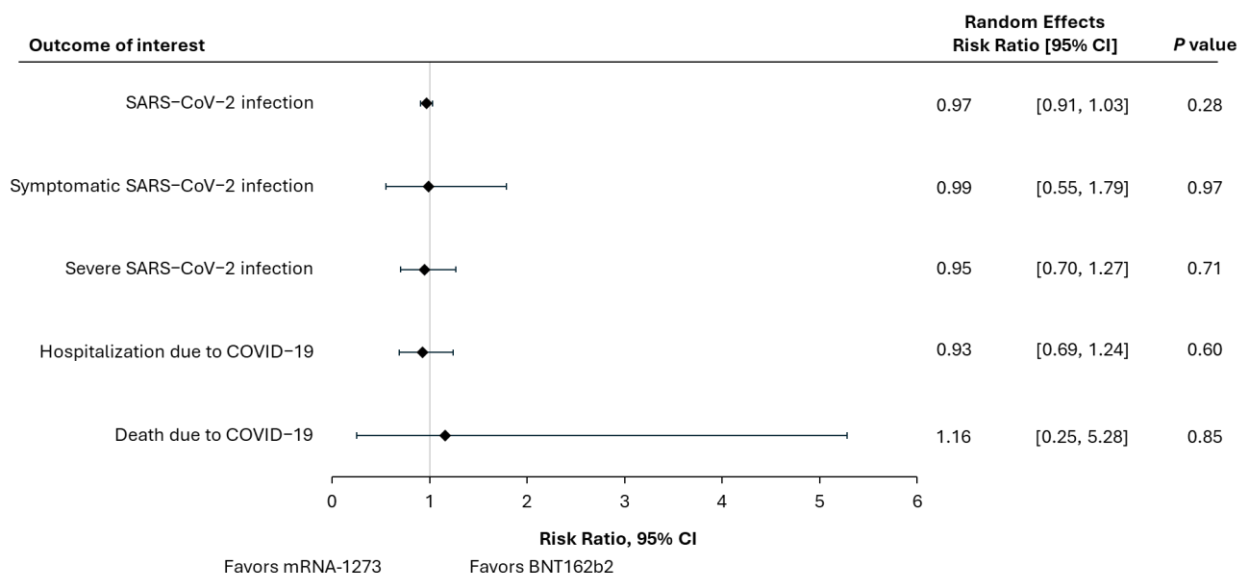
144 **Fig. S3** Summary of meta-analysis results on clinical effectiveness outcomes of the mRNA-  
 145 1273 versus BNT162b2 COVID-19 vaccines in patients receiving the following  
 146 immunosuppressive therapies: glucocorticoids, cytostatics, monoclonal antibodies, drugs  
 147 acting on immunophilins, interferons, opioids, tumor necrosis factor-binding proteins,  
 148 mycophenolate, or small biologic agents.



149

150

151 **Fig. S4** Summary of meta-analysis results on clinical effectiveness outcomes of the mRNA-  
 152 1273 versus BNT162b2 COVID-19 vaccines in patients with the following autoimmune  
 153 disorders: overall autoimmune diseases (rheumatic disease, dermatologic disease, neurologic  
 154 condition); inflammatory bowel disease; inflammatory bowel disease (exposed to  
 155 conventional and advanced immunosuppressive therapies); multiple sclerosis and on disease-  
 156 modifying therapies; rheumatologic or inflammatory disorder; systemic lupus erythematosus;  
 157 taking conventional synthetic DMARDs, biologic DMARDs, or glucocorticoids within 3  
 158 months of baseline; or systemic autoimmune rheumatic disease on immunomodulatory  
 159 medications. DMARD, disease-modifying anti-rheumatic drug.

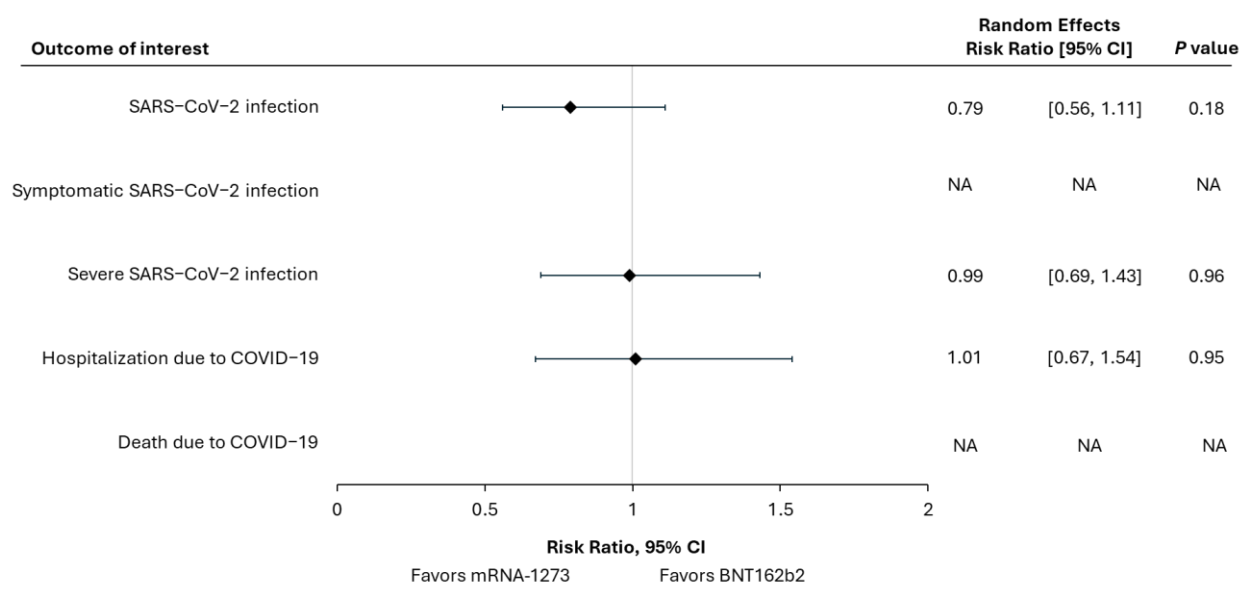


160

161



162 **Fig. S5** Summary of meta-analysis results on clinical effectiveness outcomes of the mRNA-  
 163 1273 versus BNT162b2 COVID-19 vaccines in patients with cardiovascular disease (only  
 164 hypertension). NA, not applicable.

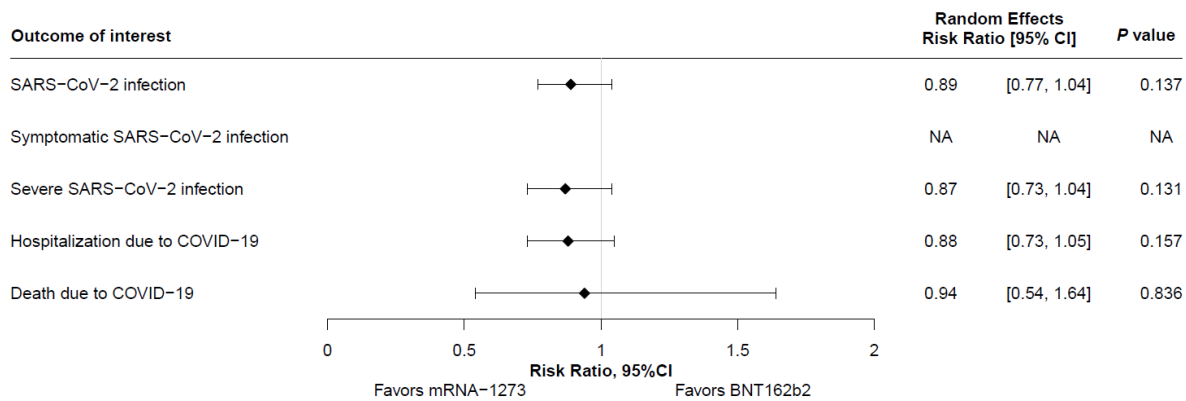


165

166

167 **Fig. S6** Summary of meta-analysis results on clinical effectiveness outcomes of the mRNA-  
 168 1273 versus BNT162b2 COVID-19 vaccines in patients with chronic kidney disease. NA, not  
 169 applicable.

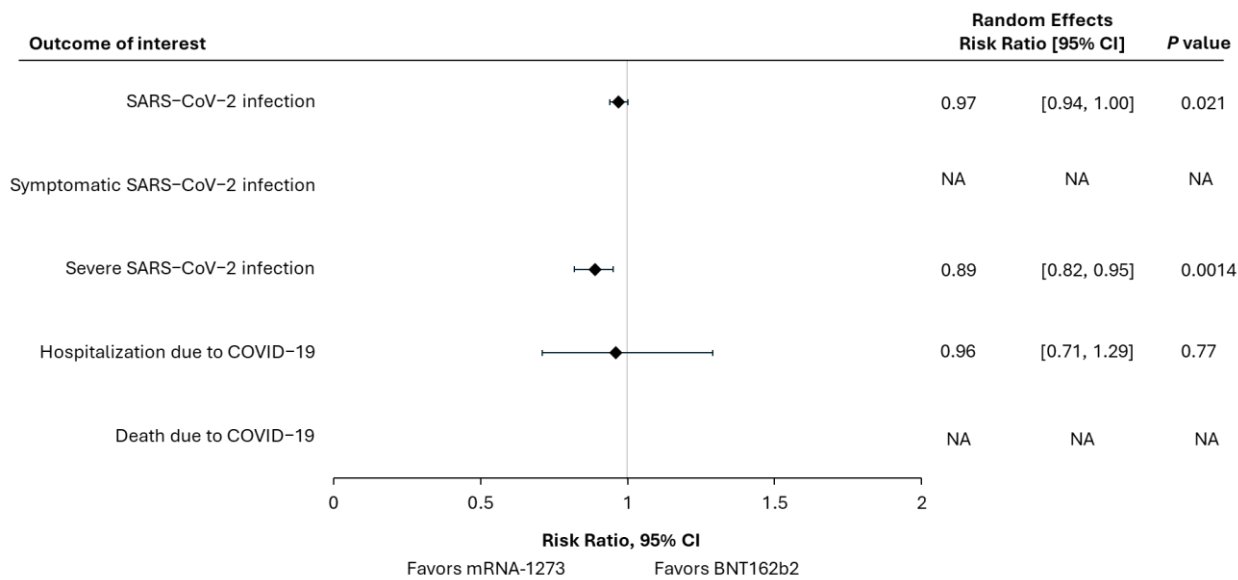
170



171

172

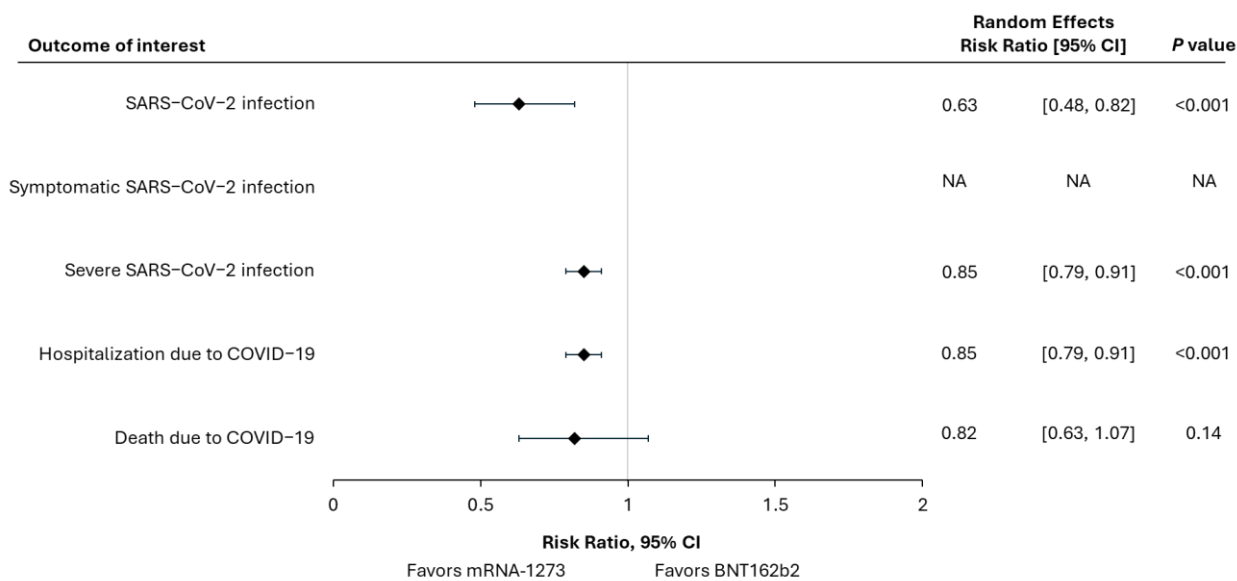
173 **Fig. S7** Summary of meta-analysis results on clinical effectiveness outcomes of the mRNA-  
 174 1273 versus BNT162b2 COVID-19 vaccines in patients with chronic respiratory conditions.  
 175 NA, not applicable.



176

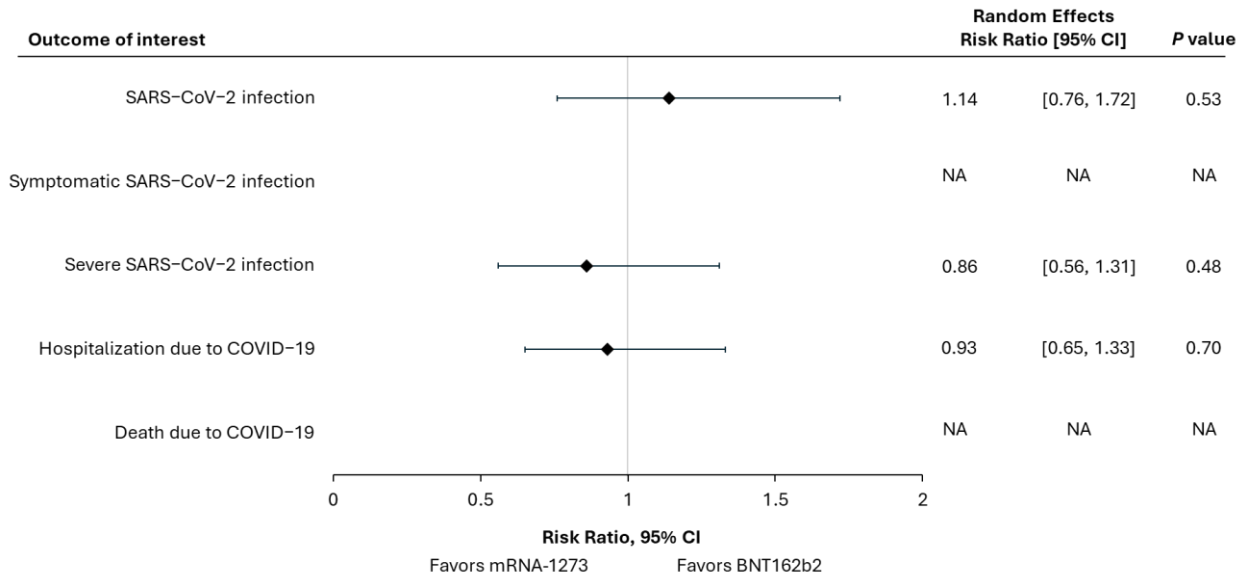
177

178 **Fig. S8** Summary of meta-analysis results on clinical effectiveness outcomes of the mRNA-  
 179 1273 versus BNT162b2 COVID-19 vaccines in patients with diabetes. NA, not applicable.



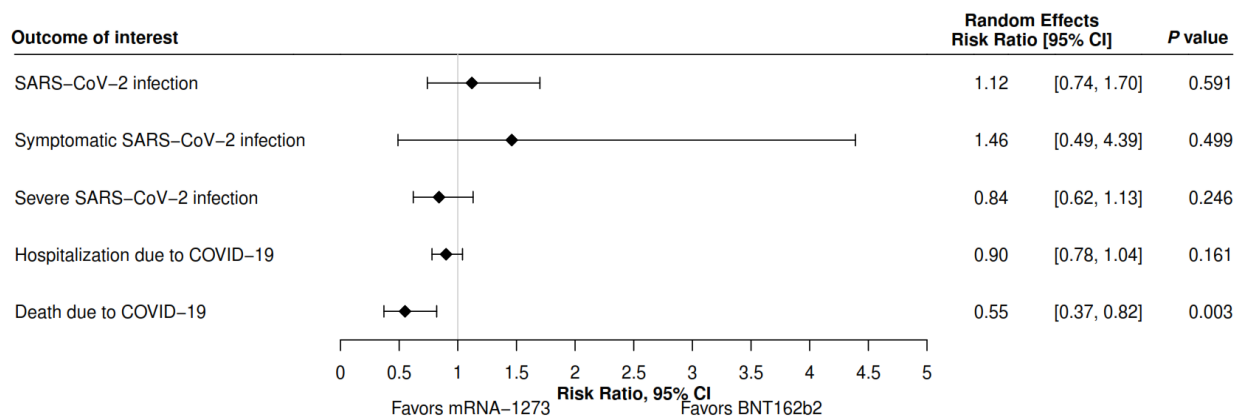
180

181 **Fig. S9** Summary of meta-analysis results on clinical effectiveness outcomes of the mRNA-  
 182 1273 versus BNT162b2 COVID-19 vaccines in patients with hematologic malignancies. NA,  
 183 not applicable.



184

185 **Fig. S10** Summary of meta-analysis results on clinical effectiveness outcomes of the mRNA-  
 186 1273 versus BNT162b2 COVID-19 vaccines in patients who received a solid organ  
 187 transplant.



188

189