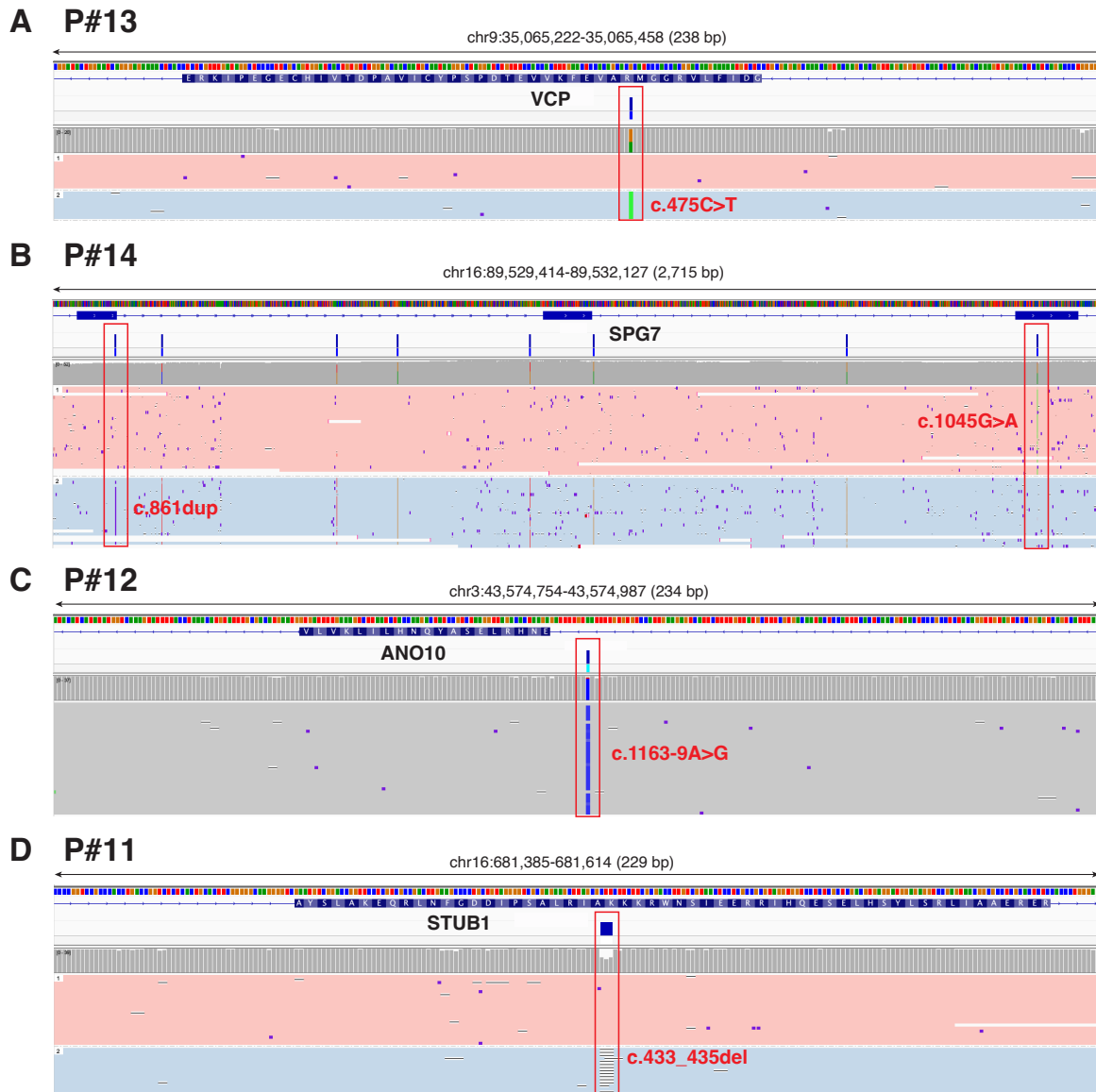


Detection and phasing of pathogenic sequence variants in four undiagnosed participants



Supplementary Figure 3. Detection and phasing of pathogenic sequence variants in four undiagnosed participants.

Genome browser view shows detection of pathogenic sequence variants within (A) VCP (Patient #13); (B) SPG7 (Patient #14); (C) ANO10 (Patient #12) and (D) STUB1 (Patient #11). Alignments are phased into separate haplotypes (pink = haplotype 1; blue = haplotype 2).