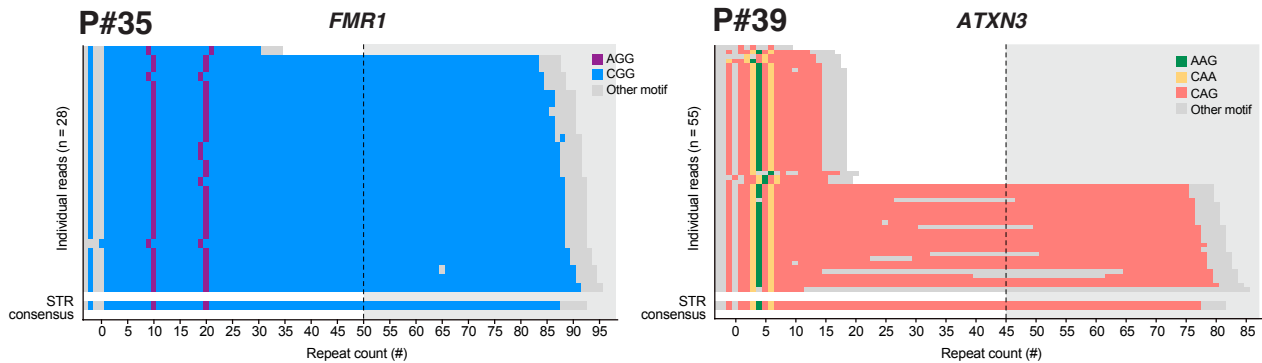


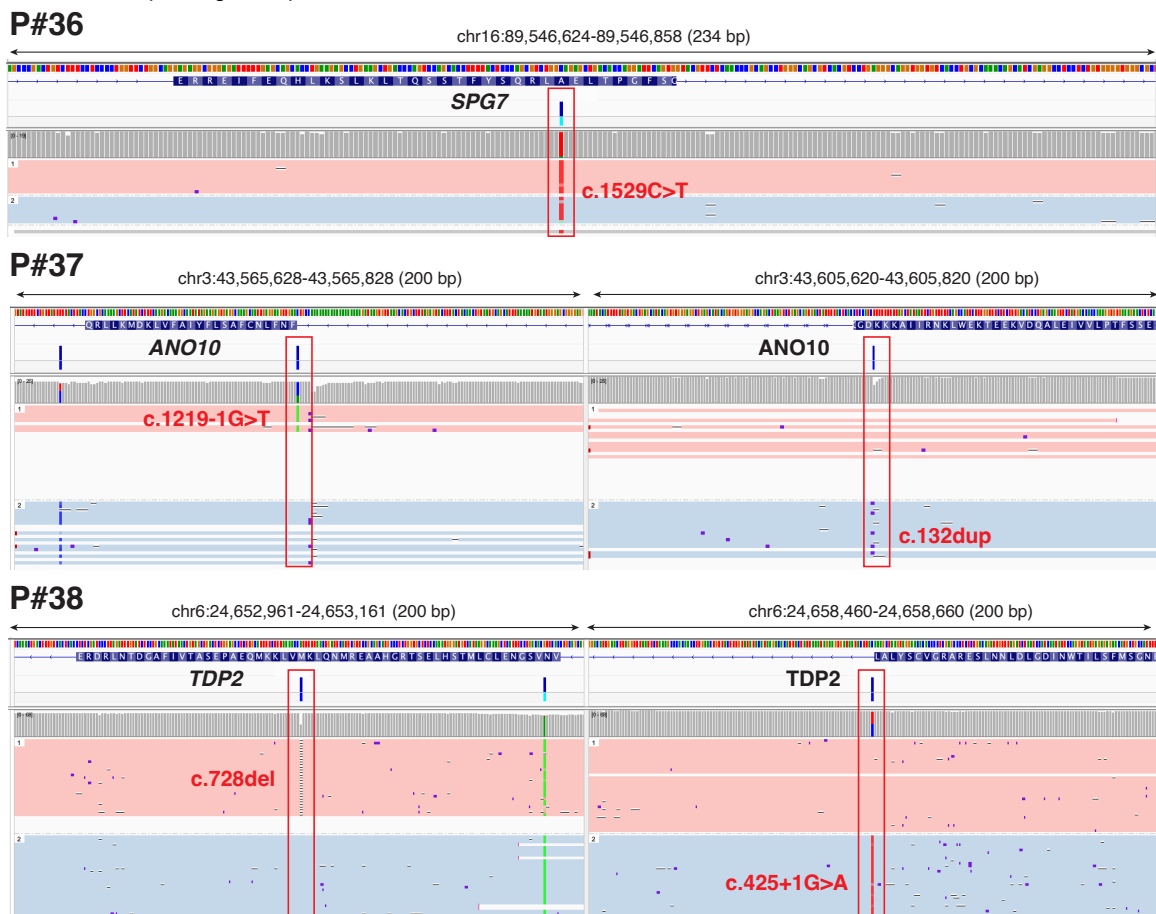
A Summary of known pathogenic variants in control cases

Participant	Diagnosis	Gene	Variant(s)	Original testing method	ONT LRS Result
35	FXTAS	<i>FMR1</i>	(CCG) ₈₅	PCR and triplet-primed PCR	(CGG) _n (AGG) ₁ (CGG) _n (AGG) ₁ (CGG) ₆₇
39	SCA3	<i>ATXN3</i>	(CAG) ₇₃	PCR and fragment analysis	(CAG) ₂ (CAA) ₁ (AAG) ₁ (CAG) ₁ (CAA) ₁ (CAG) ₇₁
36	SPG7	<i>SPG7</i>	c.1529C>T (p.Ala510Val) presumed homozygous	Targeted NGS panel	c.1529C>T in homozygosity
37	SCAR10	<i>ANO10</i>	c.132dup (p.Asp45Argfs*9);	Targeted NGS panel	c.132dup (p.Asp45Argfs*9) ; c.1219-1G>T <i>in trans</i>
38	SCAR23	<i>TDP2</i>	c.425+1G>A; c.728del (p.Met243Argfs*3)	WGS	c.425+1G>A ; c.728del (p.Met243Argfs*3) <i>in trans</i>

B Identification of STR expansions in control cases



C Detection and phasing of sequence variants in control cases



Supplementary Figure 2. Accuracy of targeted long-read sequencing confirmed by analysis of positive control cases.

(A) Table provides an overview of analysis results for five spastic-ataxia patients with known genetic diagnoses who were included as positive controls. Glossary: FXTAS, fragile X tremor/ataxia syndrome; NGS, next generation sequencing; ONT LRS, Oxford Nanopore Technologies long-read sequencing; PCR, polymerase chain reaction; SCA, spinocerebellar ataxia; SCAR, spinocerebellar ataxia, recessive; SPG, spastic paraplegia; WGS, whole genome sequencing. (B) Sequence-bar plots show STR genotyping results for *FMR1* (Patient #35; FXTAS) and *ATXN3* (Patient #39; SCA3). Each individual long-read alignment is shown separately and a consensus sequence for the expanded allele in each case is shown below (note: only one allele is present for Patient #35, as *FMR1* is on chrX and the individual is male). (C) Genome browser view shows detection of known pathogenic sequence variants within *SPG7* (Patient #36), *ANO10* (Patient #37) and *TDP2* (Patient #38). Alignments are phased into separate haplotypes (pink = haplotype 1; blue = haplotype 2), confirming the pathogenic variants for #37 and #38 are on alternative haplotypes (i.e. in trans).