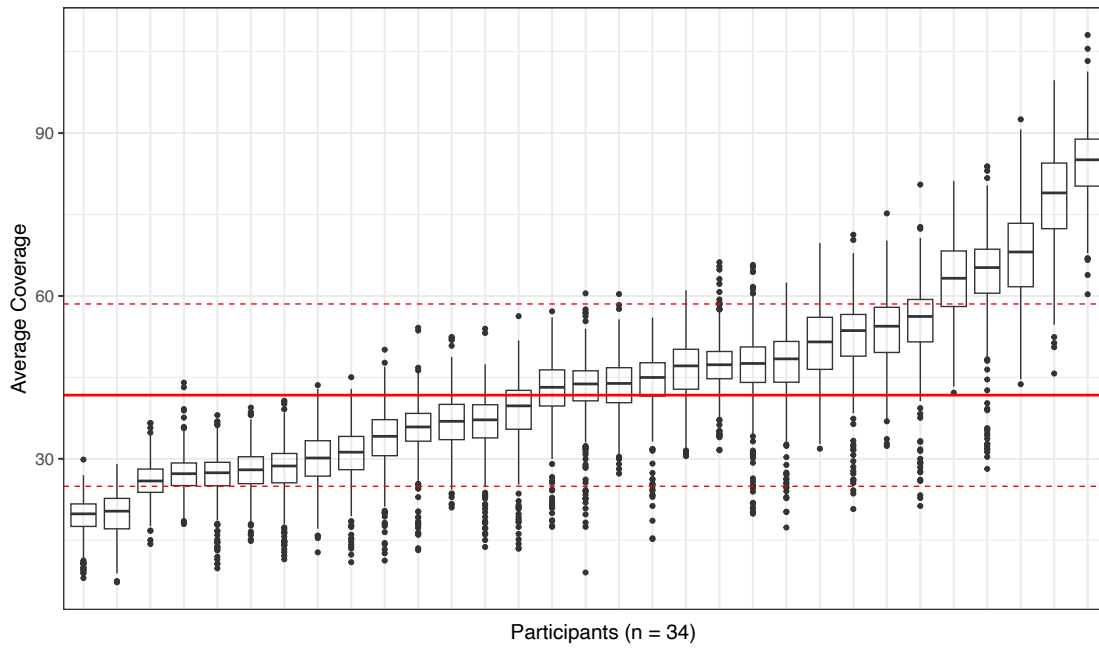
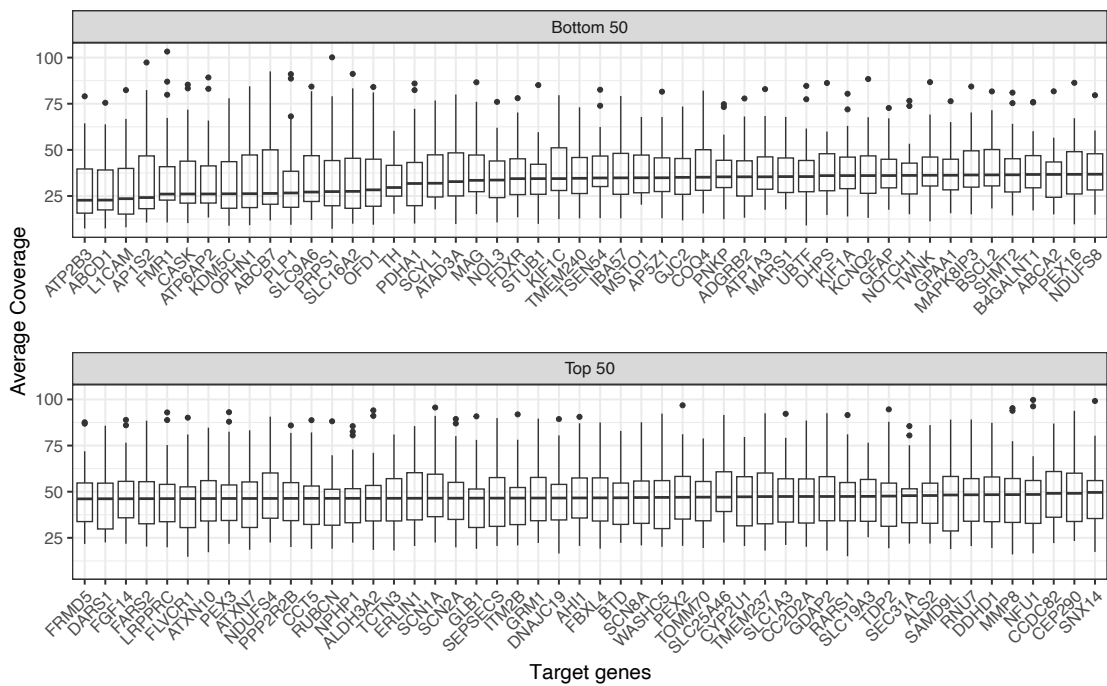


A Targeted LRS coverage depth - by participant



B Targeted LRS coverage depth - by target



Supplementary Figure 1. Sequencing coverage metrics for targeted long-read sequencing assay.

(A) Average coverage depth for gene targets (n = 469) obtained for each participant in our undiagnosed spastic-ataxia cohort (n = 34 individuals). (B) Average coverage depth for participants (n = 34) obtained for each gene target on our targeted long-read sequencing panel; given space constraints, only the fifty genes with lowest and highest coverage are shown.