

1 The differential effects of common and rare genetic variants on 2 cognitive performance across development

3
4 Daniel S. Malawsky^{1,*}, Mahmoud Koko¹, Petr Danacek¹, Wei Huang¹, Olivia Wootton¹, Qinqin
5 Huang¹, Emma E. Wade¹, Sarah J. Lindsay¹, Rosalind Arden², Matthew E. Hurles¹, Hilary C.
6 Martin^{1,*}

7
8 1. Human Genetics Programme, Wellcome Sanger Institute, Hinxton, UK
9 2. Centre for Philosophy of Natural and Social Science, London School of Economics and
10 Political Science, London, UK

11
12 * Correspondence to dm22@sanger.ac.uk and hcm@sanger.ac.uk

13 Abstract

14 Common and rare genetic variants that impact adult cognitive performance also contribute to risk
15 of rare neurodevelopmental conditions involving cognitive deficits in children. However, their
16 influence on cognitive performance across early life remains poorly understood. Here, we
17 investigate the contribution of common genome-wide and rare exonic variation to cognitive
18 performance across childhood and adolescence primarily using the Avon Longitudinal Study of
19 Parents and Children (n=6,495 unrelated children). We show that the effect of common variants
20 associated with educational attainment and cognitive performance increases as children age.
21 Conversely, the negative effect of deleterious rare variants attenuates with age. Using trio
22 analyses, we show that these age-related trends are driven by direct genetic effects on the
23 individual who carries these variants. We further find that the increasing effects of common
24 variants are stronger in individuals at the upper end of the phenotype distribution, whereas the
25 attenuating effects of rare variants are stronger in those at the lower end. Concordant results were
26 observed in the Millenium Cohort Study (5,920 children) and UK Biobank (101,232 adults). The
27 effects of common and rare genetic variation on childhood cognitive performance are broadly
28 comparable in magnitude to those of other factors such as parental educational attainment,
29 maternal illness and preterm birth. The effects of maternal illness and preterm birth on childhood
30 cognitive performance also attenuate with age, whereas the effect of parental educational
31 attainment does not. Furthermore, we show that the relative contribution of these various factors
32 differ depending on whether one considers their contribution to phenotypic variance across the
33 entire population or to the risk of poor outcomes. Our findings may help explain the apparent
34 incomplete penetrance of rare damaging variants associated with neurodevelopmental
35 conditions. More generally, they also show the importance of studying dynamic genetic influences
36 across the life course and their differential effects across the phenotype distribution.

37
38

39 Main text

40 Cognitive ability is an important predictor of life outcomes such as health, education, occupation,
41 and mortality¹⁻⁶. It is influenced both by genetic and environmental factors⁷, including extrinsic
42 factors that have both genetic and environmental components such as parental educational
43 attainment (EA), gestational age at birth, and maternal illness during pregnancy⁸⁻¹⁰. Results from
44 twin studies show that the heritability of cognitive ability increases throughout development, from
45 ~0.2 in infancy to ~0.6 in adulthood¹¹. In adults, the heritability of cognitive performance
46 attributable to common single-nucleotide polymorphisms (the ‘SNP heritability’) was recently
47 estimated to be 0.24, with about 60% of this being due to direct genetic effects^{12,13}, i.e. effects of
48 genetic variants in an individual on that individual’s own phenotype. The remaining SNP
49 heritability is likely to be explained by a variety of other sources, including the indirect effects of
50 “genetic nurture” (a phenomenon whereby an individual’s rearing environment is influenced by
51 their relatives’ genetic make-up), assortative mating, and uncontrolled population stratification in
52 genome-wide association studies (GWASs)¹⁴⁻¹⁷. The relative contribution of genetic nurture,
53 assortative mating and population stratification to genetic associations is still a matter of debate,
54 and may differ between cognitive performance and related traits such as EA and academic
55 achievement^{14,18-20}. However, the role of direct versus indirect genetic effects on cognitive and
56 academic performance across different timepoints in development is under-studied, and we
57 explore this in this work.

58
59 It has become increasingly clear that the genetics of rare neurodevelopmental conditions (NDCs)
60 involving cognitive impairment overlap with genetic factors impacting cognitive ability in the
61 general population. While Mendelian-acting rare variants play a large role in NDCs, explaining
62 ~50% of probands in the Deciphering Developmental Disorders (DDD) study²¹⁻²³, common
63 variants explain ~10% of variation in risk of these conditions on the liability scale^{24,25}, and this
64 common variant risk is negatively genetically correlated with EA and adult cognitive performance
65 in the general population^{24,25}. Additionally, rare damaging coding variants in NDC-associated
66 genes are associated with lower fluid intelligence as well as lower EA and reproductive success
67 in UK Biobank²⁶⁻²⁸, and estimates suggest rare coding variants explain 1% of the variance in adult
68 cognitive performance²⁹.

69
70 Multiple lines of evidence from both clinical³⁰⁻³² and population cohorts^{28,33} suggest that some rare
71 variants conferring risk of NDCs can be shared between affected children and their seemingly
72 unaffected parents. This so-called ‘incomplete penetrance’ is seen both for large copy-number
73 variants³¹ and for protein-truncating variants (PTVs) and damaging missense variants in genes in
74 which such variants have been under negative selection throughout human history (‘constrained
75 genes’³⁴)³². There are several possible explanations for this apparent incomplete penetrance,
76 including the following. Firstly, polygenic background may modify the penetrance of these rare
77 variants; there is evidence of this from the general population²⁸, but recent within-family analyses
78 in NDC cohorts failed to find support for it²⁵. Secondly, it may be that the burden of deleterious
79 rare variants does not only impact *average* cognitive ability, but also its *variance*; in other words,
80 in a linear regression of phenotype on genotype, the variance of the residuals varies by genotype
81 - a statistical phenomenon known as ‘heteroscedasticity’. Specifically, it may be that there is a

82 higher variance in cognitive ability amongst individuals with higher burden of damaging rare
83 variants, and only a subset of these pass the threshold for being diagnosed with intellectual
84 disability. Thirdly, it may be that these rare variants (or at least a subset of them) influence
85 cognitive ability in childhood more than they do in adulthood. Here, we investigate these two latter
86 hypotheses.

87
88 In this work, we sought to dissect the contribution of genome-wide common variants and rare
89 exonic variants to cognitive performance across childhood and adolescence, using genotype data
90 and new exome-sequence data from two British birth cohorts, the Avon Longitudinal Study of
91 Parents and Children (ALSPAC)³⁵ and the Millenium Cohort Study (MCS)³⁶. Our first aim was to
92 examine the effects of genetic measures on average cognitive performance and academic
93 achievement as children age, then test whether these change across time and the extent to which
94 they are due to direct genetic effects. Our second aim was to explore whether these genetic
95 measures have differential effects at the tails of the phenotype distribution (in other words,
96 whether they impact the variance in cognitive ability). Finally, our third aim was to compare these
97 genetic effects to those of parental educational attainment and perinatal exposures, and to
98 explore whether they are robust to controlling for these other measures. Our results illuminate the
99 dynamic genetic architecture of cognitive performance across development and shed light on the
100 factors that best predict cognitive impairment in childhood as opposed to average cognitive
101 performance in adulthood.

102 Results

103 In this work, we used measurements of cognitive performance and/or school achievement from
104 three cohorts: ALSPAC, MCS and UK Biobank. Our primary analyses were based on measures
105 of IQ from ALSPAC that were collected at ages 4 (n=1,012), 8 (n=7,347), and 16 (n=5,270). These
106 IQ tests have good psychometric properties³⁷ and are longitudinally invariant, meaning that they
107 measure the same latent construct across ages³⁸, making them suitable for longitudinal analyses.
108 Since missingness can induce ascertainment biases and reduce power, we imputed missing IQ
109 values across ages by leveraging the lower missingness of other cognitive and behavioral tests
110 and demographic variables (Supplementary Note 1; Extended Data Figure 1). We report results
111 analyzing only the observed IQ values (“pre-imputation”) and both the observed and imputed IQ
112 values (“post-imputation”).

113 Influence of common variants on cognitive performance across development

114 To assess the common variant contribution to cognitive development, we first considered the
115 heritabilities and genetic correlations of the IQ measures across development in ALSPAC, using
116 6,495 unrelated children with SNP genotype data, genetically-inferred European ancestry and
117 observed or imputed IQ values. Using GREML-LDMS³⁹, we estimated that the heritability of IQ
118 increased between ages 4 to 16 from 0.46 to 0.56 (post-imputation), though the increase was not
119 significant (p=0.053) (Table S2). The pairwise genetic correlations between IQ across ages were
120 all significantly greater than zero (p<10⁻¹⁰) and indistinguishable from 1 (Table S2), suggesting

121 the common variant genetic architecture is largely stable across development. These results are
122 consistent with previous studies^{40,41}.

123
124 We then considered the associations between IQ and polygenic indices (PGIs), which capture
125 the effect of common SNPs ascertained for their association with a given trait. We first considered
126 a PGI for EA (PGI_{EA}). EA is known to have a cognitive component as well as a non-cognitive
127 component which may capture factors such as personality traits and socioeconomic status that
128 affect people's ability to progress through education⁴². Genetic effects on these two components
129 have been previously derived from GWASs in adults using Genomic Structural Equation
130 Modeling⁴², so we also included PGIs representing each of them (PGI_{Cog} and PGI_{NonCog}). For each
131 PGI, we modeled IQ across all ages as the outcome of individual-specific random effects and
132 several fixed effects, namely age (relative to age 4), the PGI, and their interaction, with sex and
133 genetic principal components as covariates. With this mixed-effects linear model, we were able
134 to account for intra-individual repeated IQ measures and estimate two parameters of interest: the
135 effect of the PGI at baseline i.e. at age 4 (the "main effect", estimated leveraging the data at all
136 ages) and whether the effect changed with age (the "interaction effect"; see Box 1). We detected
137 significant ($p < .05/3$) positive main effects for all PGIs pre- and post-imputation, and significant
138 positive PGI-by-age interaction effects for all PGIs post-imputation as well as for PGI_{EA} pre-
139 imputation ("population model, full cohort" in Figure 1A, Table S4). These results imply that the
140 common variants ascertained for their association with cognitive performance and final
141 educational attainment in adults explain more variance in IQ as children age.

142
143 As noted above, these results give estimates of the association between children's PGIs and IQ
144 which do not only include direct genetic effects; they also include the influence of other correlates
145 of the child's genotype including the influence of parental genotypes on the child's IQ (often
146 termed "indirect genetic effects" or "genetic nurture") and potential confounding due to population
147 stratification and assortative mating. We thus sought to estimate the direct genetic effects of PGIs
148 on IQ across development, as opposed to the 'population effects' just described. We repeated
149 the above analyses adding parental PGIs as covariates in a subset of 4,968 unrelated parent-
150 offspring trios for which we measured parental genotypes or could infer them via Mendelian
151 imputation²⁰ ("trio model"; see Methods). After conditioning on parental PGIs, the coefficient on
152 the child's PGI provides an estimate of the direct genetic effects¹⁴, while the coefficient on the
153 parents' PGIs represents the association between the child's phenotype and alleles in the parents
154 that are not transmitted to the child. We found no evidence for a direct main effect of the PGI_{NonCog}
155 (Figure 1A), implying that the population effect reflects genetic nurture or potential confounding.
156 In contrast, we detected significant direct main effects of PGI_{EA} and PGI_{Cog} on IQ, though of
157 weaker magnitude than the population effects both pre- and post-imputation ($p < 0.005$, z test for
158 difference between direct and population main effects for PGI_{EA} and PGI_{Cog}) (Figure 1A). The
159 positive PGI_{EA} -by-age and PGI_{Cog} -by-age population effects were recapitulated when examining
160 the direct effects ($p < .05/3$), and their magnitudes were statistically indistinguishable from the
161 population effects both pre- and post-imputation ($p > 0.05$, z test). We found no significant
162 differences between the direct effects for PGI_{EA} and PGI_{Cog} ($p > 0.05$ for difference in the main and
163 interaction effects, z test), suggesting the cognitive component of EA fully captured the direct
164 genetic effect of PGI_{EA} on IQ.

165
166
167

Box 1: Genetic effects estimated in this study

We estimate a variety of genetic effects from mixed-effects models (see Methods section on “Associations between genetic measures and traits”), including either main or interaction effects combined with either population effects, direct effects or effects of non-transmitted parental alleles.

Population main effect: The effect of a child’s genetic score on the phenotype at the first measurement time point (e.g., age 4 in the ALSPAC IQ analysis). This effect is estimated without adjusting for parental genetic scores in the regression, and reflects a combination of the effects of the child’s genetic score on their own phenotype, genetic nurture, assortative mating, and uncontrolled population stratification. It does **not** have a causal interpretation.

Population interaction effect: The *change* in the population effect of a genetic score on the phenotype with age.

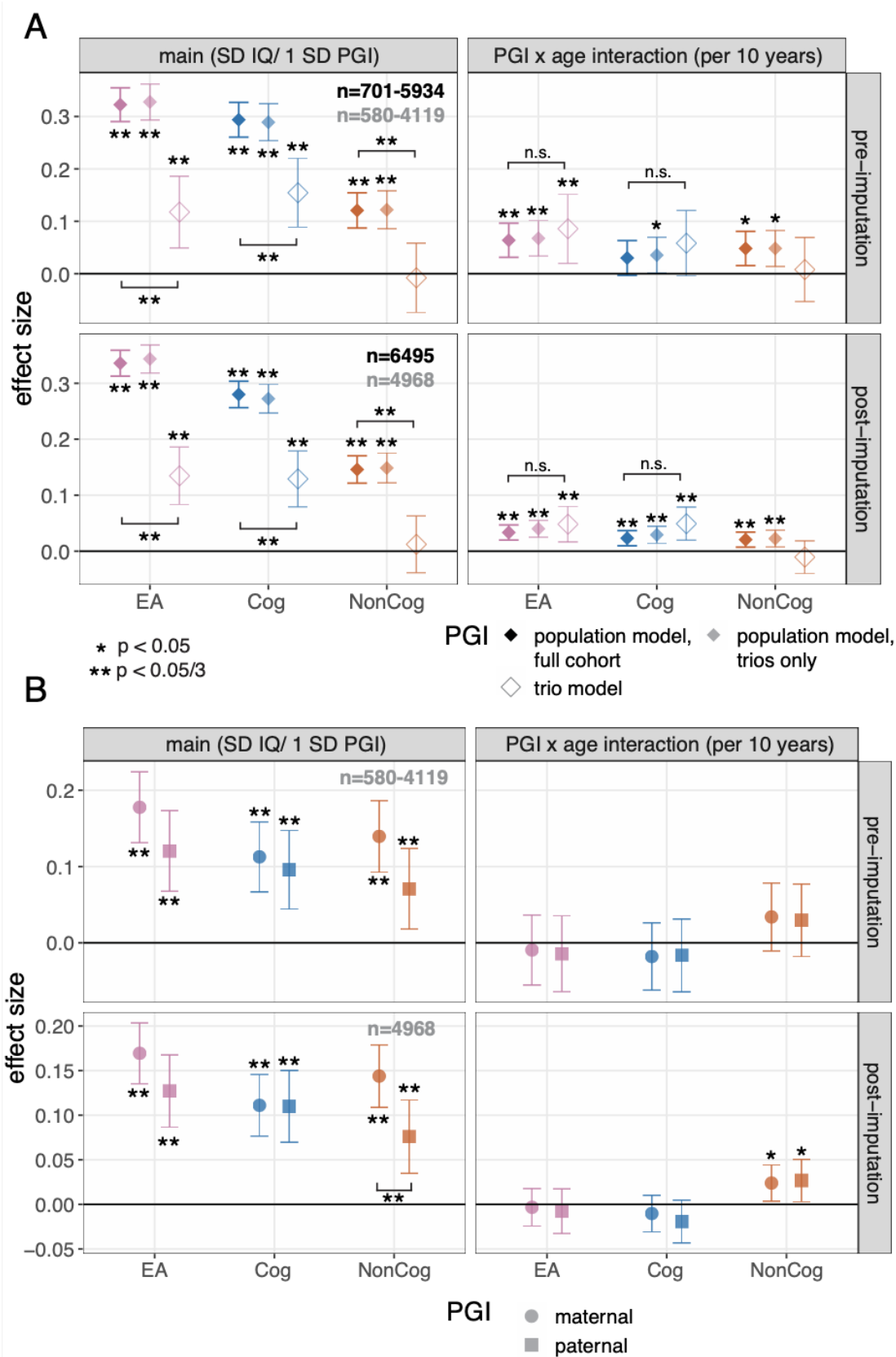
Direct main effect: The effect of a child’s genetic score on the phenotype at the first measurement time point, adjusting for the parental genetic scores (i.e., a trio model). This effect isolates the influence of the child’s own genetic score on their own phenotype and has a causal interpretation (see section IV in ⁴³ for further discussion).

Direct interaction effect: The *change* in the direct effect of a genetic score on the phenotype with age.

Effects of non-transmitted alleles: These are the effects of the parental genetic scores on the phenotype, estimated in the trio model; in this model, the effect of transmitted alleles is captured by the coefficient on the child’s score, whereas the coefficients on the parents’ scores are mathematically equivalent to the effect of the non-transmitted alleles in the parents. These effects reflect a combination of genetic nurture, assortative mating, and uncontrolled population stratification. They do **not** have a causal interpretation.

Note that all of these effects are estimated both on the mean of the phenotype with linear regression (Figures 1, 2, 4A), and also on quantiles of the phenotype (e.g., the median) with quantile regression (Figure 3, 4B).

168



170 Figure 1

171 Association between PGIs and IQ across ages. Standardized effects and 95% confidence intervals
172 estimated for the main effects and PGI-by-age-interaction effects for each PGI, either pre- (top) and post-
173 imputation (bottom) A) Results for the children's PGIs not controlling (i.e. 'population model') and controlling
174 (right) for parental PGIs (i.e. trio model). Population effect sizes are shown estimated in the full sample
175 (opaque) and in the subset of children with parental PGIs (translucent), with the corresponding sample
176 sizes shown in black and gray text respectively. B) Results for the parental PGIs from the trio model. SD:
177 standard deviation; PGI: polygenic index; EA: educational attainment; Cog: cognitive component of EA from
178 ¹⁹; NonCog: non-cognitive component of EA from ¹⁹. The square brackets indicate significant comparisons
179 highlighted in the text (z tests).

180
181 In the trio model, we found all parental PGIs had significant main effects pre- and post-imputation
182 and there was a nominally significant positive PGI_{NonCog} -by-age interaction post-imputation (Figure
183 1B, Table S4). Additionally, we found the main effect of the maternal PGI_{NonCog} was significantly
184 greater than the paternal effect post-imputation (difference in coefficients = 0.067, $p=0.014$, z
185 test), though we did not find significant differences between maternal and paternal effects for
186 PGI_{EA} and PGI_{Cog} . These results suggest that indirect genetic effects and/or confounding effects
187 captured by the parental PGIs are significantly associated with IQ, and that the effects captured
188 by parental PGI_{NonCog} are stronger for the maternal than the paternal PGI. The association
189 between non-transmitted alleles in PGI_{NonCog} and children's IQ could be because parenting
190 behaviors correlated with PGI_{NonCog} increase children's cognitive ability, or due to cross-trait
191 parental assortment based on the cognitive and non-cognitive components of educational
192 attainment. The fact that we observe a significant difference between the associations with
193 mothers' and fathers' non-transmitted alleles suggest that these potentially reflect at least some
194 'genetic nurture' component which differs between parents.

195
196 As a complementary approach, we assessed the influence of the PGIs on academic performance
197 in ALSPAC. In Year 6 and Year 9 (roughly ages 11 and 14, respectively; known as Key Stages 2
198 and 3 in the UK) children were administered three standardized exams covering English,
199 Mathematics, and Science from which we derived a composite academic performance metric
200 which we showed was measuring the same latent construct across time (Table S1; Methods). We
201 assessed the contribution of the three PGIs to academic performance as before, for children who
202 had complete data for the three exams at both ages ($n=3,895$). We found significant ($p<1.1\times 10^{-17}$)
203 population effects for all PGIs and significant increases in effects with age for PGI_{EA} and
204 PGI_{NonCog} ($p<2.1\times 10^{-8}$) (Extended Data Figure 2, Table S5). In a trio analysis ($n=3,024$), we found
205 evidence for direct genetic effects of PGI_{EA} and PGI_{Cog} on academic performance (Extended Data
206 Figure 2), consistent with previous work in other cohorts¹⁹. Though all of the PGI-by-age
207 interactions were positive, only the PGI_{EA} showed a significant increase in direct effects ($p=0.014$),
208 likely due to the reduction in power of the decreased sample size and the narrower age range
209 considered. However, broadly these results for the impact of common genetic variation on
210 academic performance mirror what we observed for IQ.

211 Influence of rare variant burden on cognitive performance across development

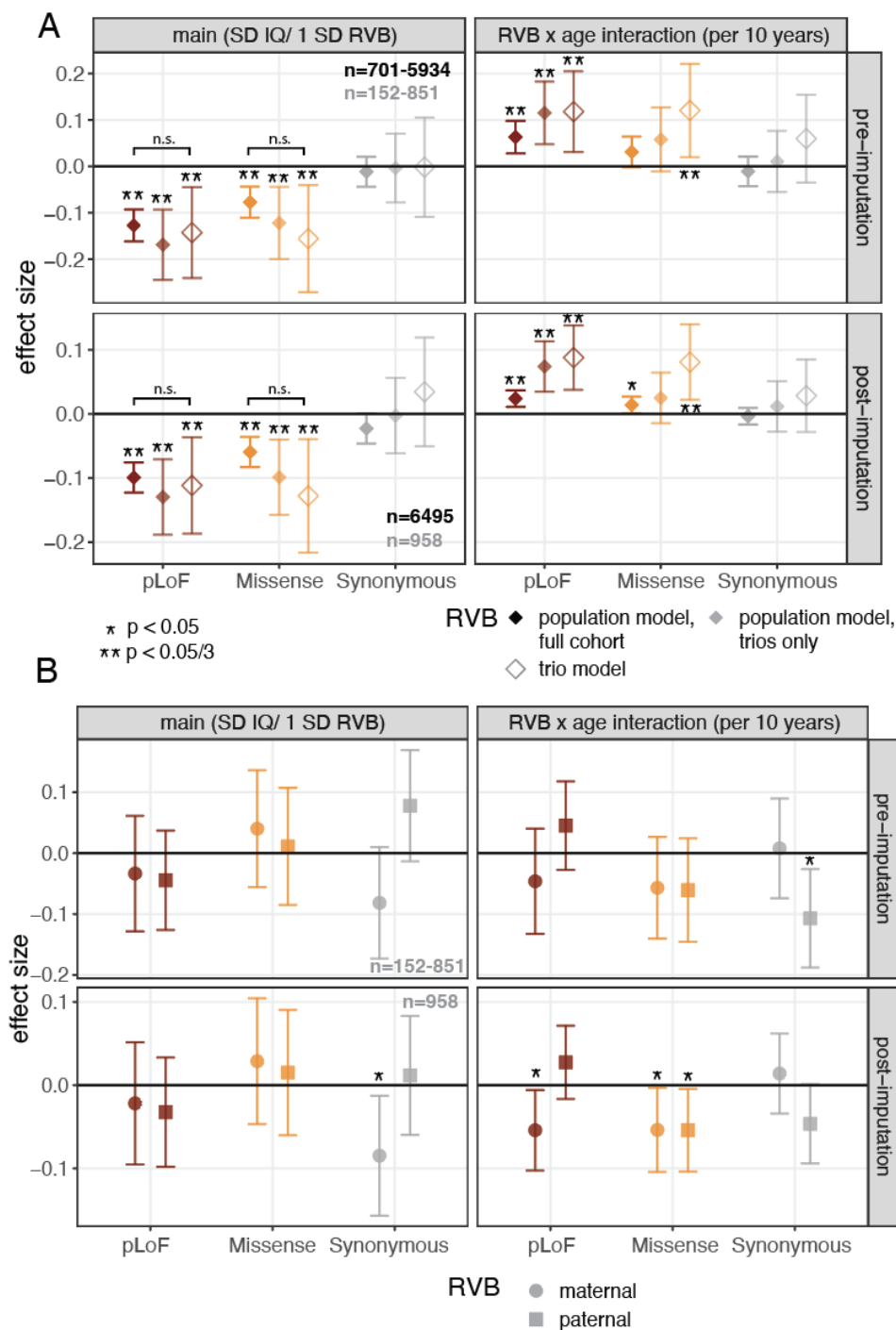
212 We generated new exome sequencing data on ALSPAC (8,436 children and 3,215 parents) and
213 MCS (7,667 children and 6,925 parents) to supplement the SNP genotype and longitudinal
214 phenotype data already available. We first used these to assess the associations between IQ and
215 deleterious rare variant burden (RVB) in ALSPAC. We quantified RVB as the sum of gene-specific
216 selection coefficients⁴⁴ (reflecting evolutionary constraint, or negative selection) for genes in which
217 an individual carries a rare (within-sample minor allele frequency, MAF <0.1%) predicted loss-of-
218 function, deleterious missense, or synonymous variant (RVB_{pLoF}, RVB_{Missense} and RVB_{Synonymous}
219 respectively; see Methods).

220
221 RVB_{pLoF} and RVB_{Missense} were significantly negatively associated with IQ pre- and post-imputation
222 (main effects $p < .05/3$) (Figure 2A left, Table S6). As the variance of RVB_{pLoF} was significantly
223 lower than that of RVB_{Missense} (0.008 versus 0.03, $p < 10^{-10}$ F test), we compared their
224 unstandardized effects and found that, as expected, RVB_{pLoF} had a stronger effect, with its main
225 effect being 3.2-times larger than that of RVB_{Missense} ($p = 4 \times 10^{-7}$, z test) (Extended Data Figure 3).
226 RVB_{Synonymous} (a negative control) was not significantly associated with IQ at any age pre- and
227 post-imputation (Figure 2A). The effect of RVB_{pLoF} significantly attenuated at later ages both pre-
228 and post-imputation ($p < .05/3$) and we saw the same trend at nominal significance for RVB_{Missense}
229 post-imputation (Figure 2A right). Similarly, we found that RVB_{pLoF} and RVB_{Missense} were
230 significantly negatively associated with academic performance at age 11 but their effects
231 attenuated with age (Extended Data Figure 4, Table S7).

232
233 Next we considered the effects of RVB_{pLoF} calculated for specific gene sets. We found that genes
234 prioritized via common variant-based GWAS of educational attainment⁴⁵ showed a stronger
235 association with IQ in childhood than expected for similarly evolutionarily constrained genes,
236 highlighting the convergence of common and rare variant associations for these related
237 phenotypes on the same genes (Supplementary Note 2, Extended Data Figure 5). We also
238 observed suggestive evidence that the attenuation of the effect of RVB_{pLoF} on IQ with age was
239 strongest in genes that showed preferential expression in the prenatal rather than postnatal
240 brain⁴⁶ (Supplementary Note 2, Extended Data Figure 5A), although this was less clear when
241 examining academic performance (Figure S5).

242
243 We next sought to estimate the direct genetic effects of RVB on IQ across development in a
244 subset of 958 unrelated exome-sequenced trios by adding parental RVBs as covariates as before.
245 We found that the estimated population and direct main effects were not significantly different
246 from each other for either RVB_{pLoF} nor RVB_{Missense} ($p > 0.05$, z test) (Figure 2A, Table S6) and that
247 no maternal or paternal RVBs were significantly associated with IQ after accounting for multiple
248 testing (Figure 2B, Table S6), though this may be in part due to the larger standard errors of the
249 estimates at this smaller sample size. This result implies that the population effects are likely
250 minimally biased in estimating the direct effects, in contrast to what we observed for PGIs.
251 Notably, we found significant RVB_{pLoF}-by-age and RVB_{Missense}-by-age interactions for direct effects
252 both pre- and post-imputation ($p < .05/3$). Thus, our results show that higher exome-wide burden
253 of rare damaging variants is associated with lower IQ in childhood, though with attenuated effects
254 at later age, and that this pattern is recapitulated when examining the direct genetic effects. When

255 partitioning the effect of the burden of rare pLoFs in constrained genes into inherited variants
 256 versus *de novo* mutations in ALSPAC, we estimated that the former explained 3.5-4 times more
 257 variance in IQ across development than the latter (Supplementary Note 3; Extended Data Figure
 258 6). We obtained similar results when considering the association of *de novo* or rare inherited
 259 alleles on a composite measure of childhood cognitive performance in MCS (see Methods; Figure
 260 S1).



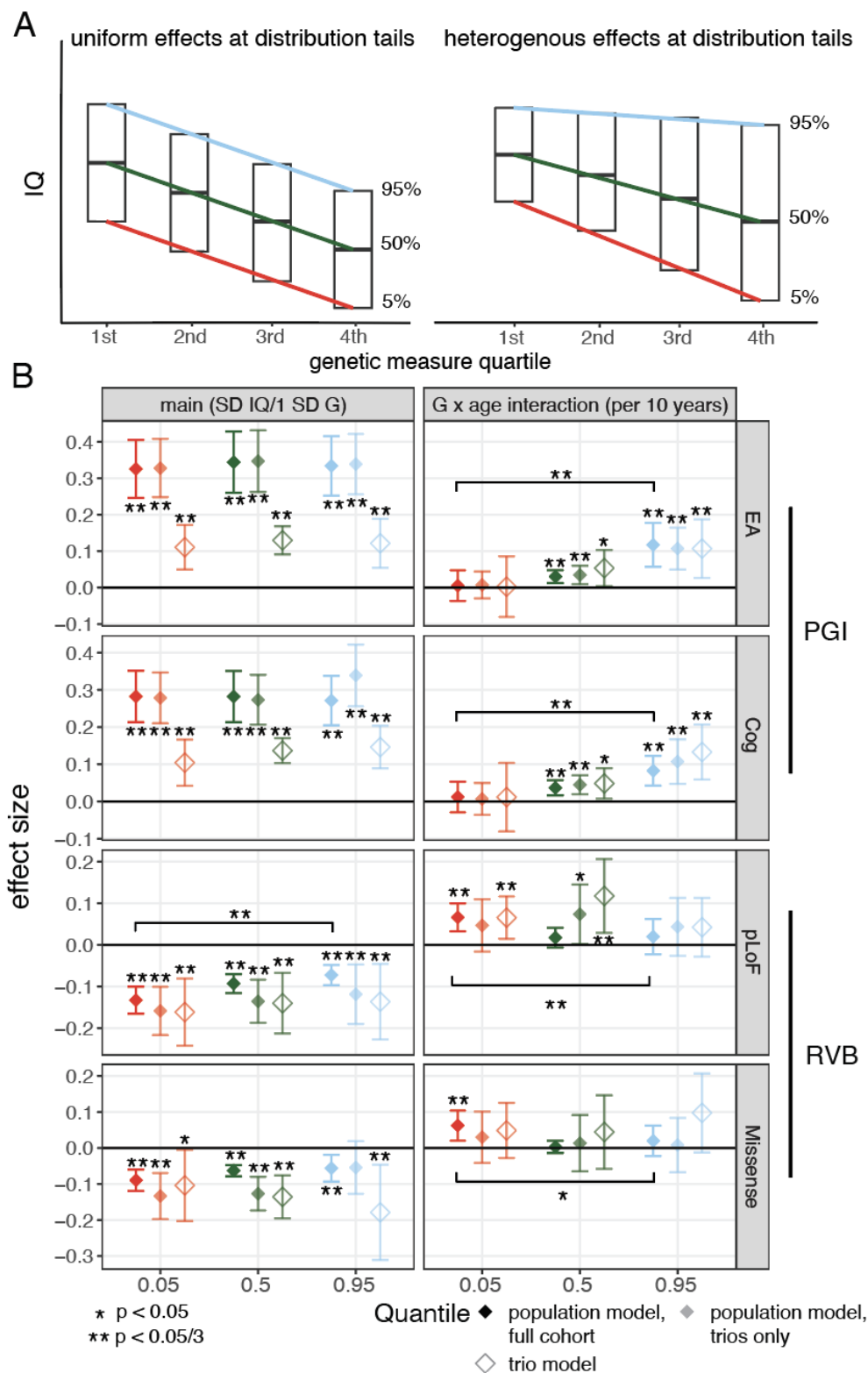
262 Figure 2

263 Association between rare variant burden (RVB) and IQ across ages. Standardized effects and 95%
264 confidence intervals estimated for the main effects and RVB-by-age-interaction effects for RVB calculated
265 with three different consequence classes (pLoF, missense or synonymous), either pre- (top) and post-
266 imputation (bottom) . A) Results for the children's RVBs not controlling (i.e. 'population model') and
267 controlling (right) for parental RVBs (i.e. trio model). Population effect sizes are shown estimated in the full
268 sample (opaque) and in the subset of children with parental RVBs (translucent), with the corresponding
269 sample sizes shown in black and gray text respectively. B) Results for the parental RVBs from the trio
270 model. The square brackets indicate comparisons highlighted in the text (z tests).

271 Influence of genetic factors on the tails of the IQ distribution

272 Our results thus far show that deleterious rare exonic and common variants influence mean IQ.
273 However, we have yet to consider whether they differentially impact IQ at different quantiles in
274 the IQ distribution. Importantly, deleterious rare variants in constrained genes are known to affect
275 risk of neurodevelopmental conditions²¹, hinting that they may possibly have larger effects at the
276 lower tail end of the IQ distribution. To test whether there are heterogeneous genetic effects at the
277 tails of the IQ distribution, we used quantile regression to estimate the influence of PGIs and RVB
278 on both the median IQ as well as the bottom and top 5th percentiles in ALSPAC (Figure 3A),
279 which roughly correspond to $IQ < 75$ and $IQ > 125$, respectively³⁷.

280
281 First, we considered the influence of PGL_{EA} and PGL_{Cog} , which had significant direct genetic effects
282 on IQ in Figure 1. The effects on these different quantiles in the IQ distribution were largely
283 concordant at any given time point (Figure S2, Table S8). For both PGL_{EA} and PGL_{Cog} , we found
284 significant positive age interaction effects at the median and 95th quantile for population effects
285 ($p < .05/3$), which were at least nominally significant when considering the direct effects (Figure
286 3B). Notably, there was no evidence for significant age interactions at the 5th percentile for either
287 PGI. Repeating this analysis using academic performance in ALSPAC replicated the results,
288 showing that the standardized effect size of the PGI only significantly increased at the median
289 and nominally at the 95th percentile (Extended Data Figure 7A). Parental PGI associations with
290 IQ were largely uniform across the phenotype distribution and consistent across development
291 (Extended Data Figure 8). Collectively, these results suggest the observed increase with age in
292 the effect of the two PGIs on IQ was driven by increasing genetic effect in the upper half of the IQ
293 distribution.
294



295

296 Figure 3

297 Influence of common and rare variants on the tails of the IQ distribution, using IQ measures post-imputation

298 in ALSPAC. A) Schematic showing two scenarios where a genetic measure is associated with IQ and has

299 uniform effects across the IQ distribution (left) versus a scenario in which the genetic measure has
300 heterogeneous effects on IQ across the IQ distribution (right). B) Standardized effects and 95% confidence
301 intervals for quantile regression of the 5th, 50th, and 95th percentile estimated from mixed-effects modeling
302 with post-imputation IQ at ages 4, 8, and 16 for EA and EA-cog PGIs before (left) and after (right) controlling
303 for parental genetic measures. C) Same as (B) using RVB_{pLoF} and $RVB_{Missense}$ as genetic measures. See
304 Figure S3 for results from this mixed-effects model pre-imputation, and Figure S2 and Figure S4 for cross-
305 sectional estimates at each age. The square brackets indicate significant comparisons highlighted in the
306 text (z tests).

307
308 As additional replication, we then considered the association between PGI_{EA} and a single
309 measure of cognitive performance from each of MCS and UK Biobank. In MCS, cognitive tests
310 were administered at multiple ages, but previous work showed that these are not longitudinally
311 invariant⁴⁷, so we instead extracted a single composite cognitive measure from the tests
312 administered at ages 3 and 7 (see Methods) to represent overall cognitive performance in early
313 childhood. In UK Biobank, we used the results for the verbal-numerical reasoning test (sometimes
314 called “fluid intelligence”) conducted at baseline, to represent adult cognitive performance. We
315 hypothesized that we would see relatively uniform effects across quantiles of early childhood
316 cognitive performance measured in MCS, as we did for IQ in ALSPAC at age 4 (Figure S2). Given
317 the differential age interactions across quantiles observed in ALSPAC (namely the increasing
318 effect with age that is seen only in the top half of the distribution), we predicted that, in UK Biobank
319 adults, the PGI_{EA} effects would be markedly stronger at the top 5% and median than the bottom
320 5%. Our results were concordant with these two predictions (Extended Data Figure 7B): neither
321 the population ($n=5,920$) nor direct ($n=5,309$) effects were statistically different across quantiles
322 in MCS, while we found significant heterogeneity in UK Biobank when examining both the
323 population effect ($n=101,232$) and direct effect ($n=11,859$), with the direct effect at the top 5%
324 being 1.62 times greater than that at the bottom 5% ($p=0.0084$).

325
326 Secondly, we considered the influence of rare variant burden on these different quantiles of the
327 IQ distribution at different ages in ALSPAC. We found substantial heterogeneity in effects of
328 RVB_{pLoF} across the IQ distribution earlier in development that attenuated with age (Figure S4;
329 Table S9). Notably, at age 4, the population effect of RVB_{pLoF} at the 5th percentile was 3.9-times
330 greater than that at the 95th percentile ($p=9 \times 10^{-5}$, z test) and 2.2-times greater than at the median
331 ($p=7 \times 10^{-4}$), whereas by age 16, the estimates at the different quantiles were not significantly
332 different from one another. Put another way, this implies that, at age 4, the variance in IQ in people
333 with high RVB_{pLoF} is greater than in those with lower RVB_{pLoF} , but this is driven by there being
334 more people with lower rather than higher IQ, as illustrated in the right-hand plot in Figure 3A;
335 however, by age 16, RVB_{pLoF} shows uniform effects at the distribution tails. As a consequence of
336 this, the significant attenuation of population effects with age was observed only at the 5th
337 percentile and median, but not at the 95th percentile, for both RVB_{pLoF} and $RVB_{Missense}$ (Figure 3B).
338 This finding was recapitulated when examining direct genetic effects of RVB_{pLoF} although not
339 $RVB_{Missense}$ (Figure 3B). Although we detected no significant effects of parental RVB on mean IQ
340 in the trio model (Figure 2B), we detected a nominally significant negative effect of maternal
341 RVB_{pLoF} on the bottom 5th percentile, suggesting that the effect of genetically-influenced parental
342 behaviors on IQ may vary across the IQ distribution (Extended Data Figure 8). This is in line with
343 our recent finding of a significant effect of non-transmitted rare damaging maternal alleles on risk

344 of neurodevelopmental conditions (Extended Data Figure 10B in ²⁵). Repeating the RVB_{pLoF}
345 analysis on school grades in ALSPAC, we similarly find stronger associations between RVB_{pLoF}
346 and academic performance at the 5th percentile that attenuate as children age (Extended Data
347 Figure 7A). These results stand in contrast to those for the PGIs for which the significant age
348 interactions were seen only in the top half of the IQ distribution.

349
350 To try to replicate these results in independent cohorts, we then considered the association
351 between the RVB_{pLoF} and $RVB_{Missense}$ and measures of cognitive performance in MCS (n=5,666)
352 and UK Biobank (n=101,232). Given the heterogeneity of effects on IQ observed at age 4 in
353 ALSPAC (Figure S4), we hypothesized that in MCS, we would find stronger effects for RVB_{pLoF} at
354 the bottom 5% of our composite cognitive performance measure from early childhood. In UK
355 Biobank, we predicted that the differences across quantiles would be minimal since we observed
356 increasingly uniform effects across the quantiles by age 16 in ALSPAC (Figure S4). Our findings
357 were concordant with these two predictions: the bottom 5% had an effect 1.82-times stronger than
358 the median and 2.4-times stronger than the 95th percentile in MCS (p=0.019 and 0.011,
359 respectively), while we found no significant differences in effects across quantiles in UK Biobank
360 (Extended Data Figure 7B). Thus, in summary, we show that the negative effects of RVB are
361 strongest on the lower tail of the distribution of cognitive ability, and that these effects attenuate
362 with age, driving the overall attenuation of the RVB effect on mean IQ previously observed in
363 Figure 2.

364 Relative contribution of genetic and other exposures to IQ

365 Finally, we compared the longitudinal effects of common and rare genetic variants on IQ (Figures
366 1 and 2) to the effects of other factors that have previously been associated with children's
367 academic and cognitive outcomes (see Methods). We tested the effects of two perinatal factors,
368 namely maternal illness during pregnancy and premature birth (as measured by the number of
369 weeks born preterm), and the effect of realized parental educational attainment on IQ in ALSPAC
370 using a mixed-effects linear model. When fitting the variables separately (i.e. marginal
371 associations shown in blue points in Figure 4A), we found that paternal and maternal EA were
372 strongly associated with IQ (Figure 4A top) and showed no evidence for an age interaction effect
373 (Figure 4A bottom). We additionally found that maternal illness and weeks born preterm are
374 negatively associated with IQ (Figure 4A top) and that these associations attenuated with age
375 (Figure 4A bottom), consistent with previous findings using school grades in ALSPAC and
376 MCS^{48,49}. The standardized effects for these perinatal exposures were weaker than those for rare
377 variants, with maternal illness and weeks born preterm explaining 0.18% and 0.35% of the
378 variance in IQ at age 4 respectively, versus 1.40% for RVB_{pLoF} and $RVB_{Missense}$ collectively
379 (p=5.2x10⁻⁴ and 0.027, respectively) (Figure 4A top).

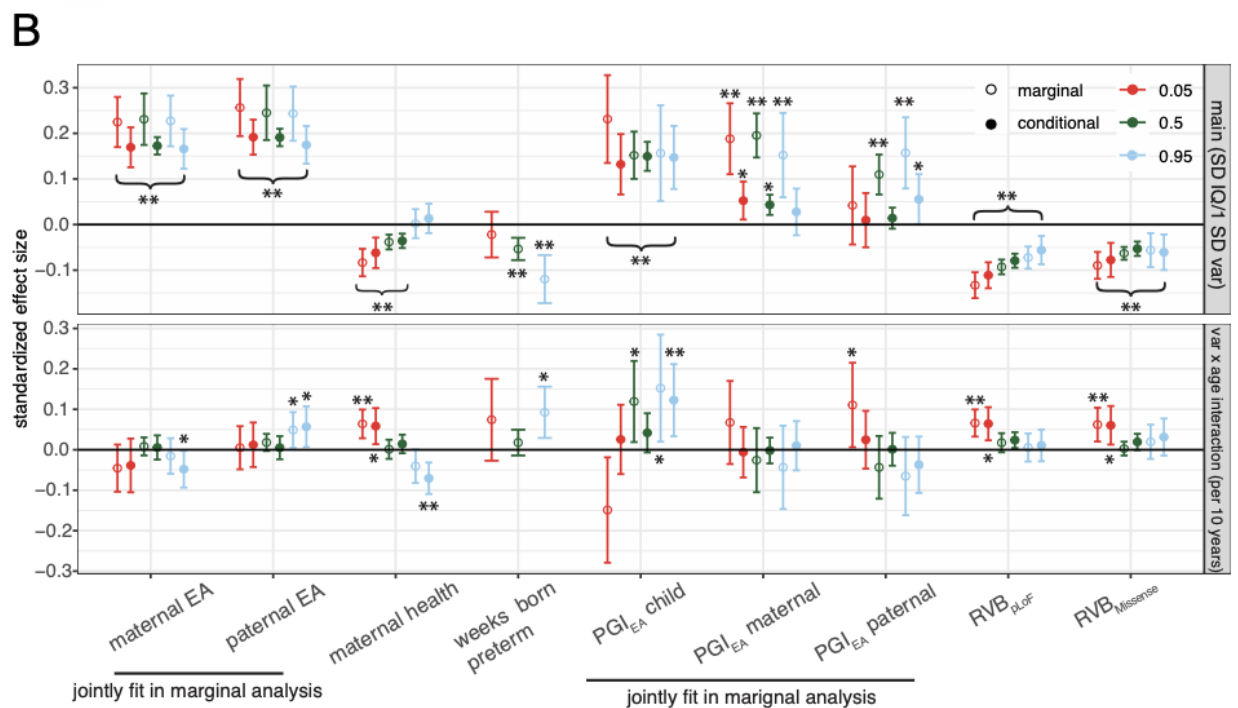
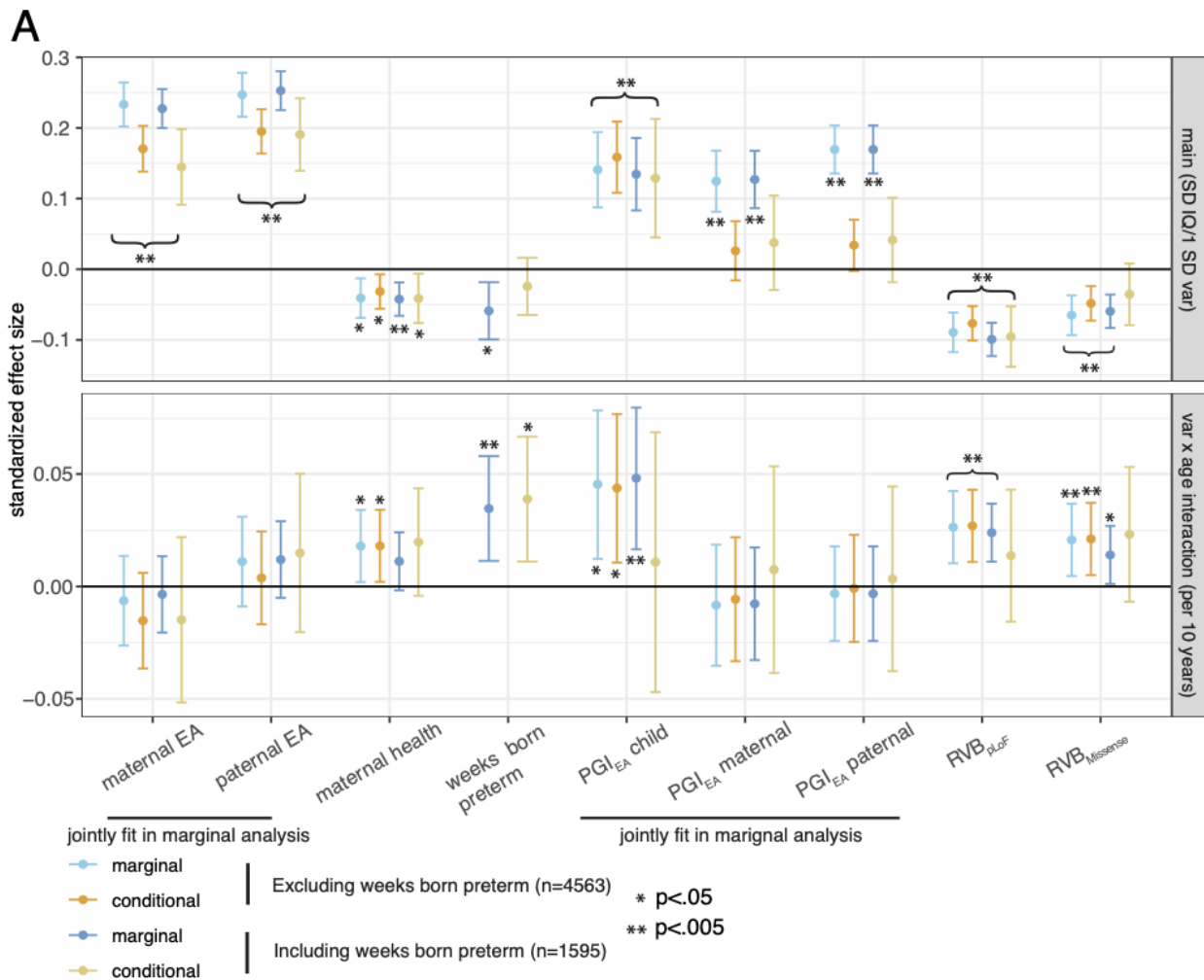
380
381 Since these perinatal factors considered are both associated with lower parental EA⁵⁰⁻⁵², and
382 parental EA is correlated with both the parents' and the child's genetics, the effects of these
383 various factors on the child's cognitive ability are likely not independent. Thus, we considered a
384 model in which we jointly fit parental EA and the perinatal exposures together with the genetic
385 scores that showed significant direct effects in Figure 1 and 2, namely offspring and parental
386 PGI_{EA} and the child's RVB_{pLoF} and $RVB_{Missense}$ (conditional estimates shown in orange in Figure

387 4A). The incremental R^2 of the joint model (excluding weeks born preterm due to the lower sample
388 size) relative to a baseline model with sex and genetic 10 PCs was 22.8% at age 4, 21.2% at age
389 8 ($p=0.29$ for a z-test for difference in variance explained compared to age 4) and 25.6% at age
390 16 ($p=0.073$ and 0.0045 relative to age 4 and 8 respectively, z test). We found that when jointly
391 fit with the other variables, the parental PGI_{EA} associations became nonsignificant, though the
392 child's direct effect estimate did not significantly change (Figure 4A top). Similarly, the effects of
393 the child's RVB_{pLoF} and $RVB_{Missense}$ on IQ did not significantly attenuate after controlling for these
394 different exposure variables and PGI_{EA} . The association between weeks born preterm and IQ was
395 no longer significant in the conditional analysis, though this may be due to reduced power in the
396 joint model. Maternal and paternal EA showed similar effect sizes to each other, which were also
397 similar to those captured by the direct genetic effect of the child's PGI_{EA} . Collectively, these results
398 highlight that the magnitude of effects of these genetic measures on childhood IQ is comparable
399 to those of other well-established influences. Importantly also, the changing effects of RVB and
400 PGS_{EA} on IQ with age that we have described above still persist after conditioning on parental EA
401 and these perinatal exposures (Figure 4A bottom).

402
403 Given our prior observation of differential effects of genetic measures on the tails of the IQ
404 distribution, we further considered the influence of parental EA and these perinatal exposures on
405 the median and top and bottom 5th percentiles of the IQ distribution. When considering each of
406 the variables in separate mixed-effects quantile regressions (Figure 4B, marginal estimates), we
407 found that paternal and maternal education had similar magnitudes of main effects as well as
408 uniform effects across quantiles, and we detected a nominally significant positive age interaction
409 ($p=0.029$) for paternal education at the 95th percentile (Figure 4B). We also found substantial
410 heterogeneity in the effect of weeks born preterm, displaying highly significant main effects at the
411 95th percentile (effect size = -0.120 , $p=8.44 \times 10^{-6}$) that significantly attenuated with age
412 ($p=0.00421$), as previously observed when examining the effect on mean IQ (Figure 4A bottom),
413 while we detected no significant effects at the 5th percentile (effect size = -0.022 , $p=0.389$). In
414 contrast, for maternal illness, we detected significant main effects at the 5th ($p=5.97 \times 10^{-8}$) that
415 attenuated with age ($p=5.06 \times 10^{-4}$), while the main effect at the 95th percentile was nonsignificant.
416 These results suggest that different perinatal factors may have varying impacts across the IQ
417 distribution, with some factors predominantly affecting the upper or lower tails of cognitive ability.

418
419 We then further explored the differential effects on the different quantiles of the IQ distribution in
420 a joint model of the genetic and other exposures (Figure 4B, conditional estimates), excluding
421 weeks born preterm due to high missingness. We detected significant maternal PGI_{EA} main effects
422 on the 5th and 50th percentiles of the IQ distribution (Figure 4B) which were not observed in the
423 conditional analysis of mean IQ (Figure 4A), suggesting the heterogeneous effects across the IQ
424 distribution may have masked these associations. This result suggests that the mother's PGI_{EA} ,
425 independently of its influence on the mother's actualized EA, is associated with the child's IQ at
426 the lower tail of the IQ distribution either due to genetic nurture or confounding tagged by the
427 paternal PGI_{EA} . In comparison, neither paternal nor maternal EA showed heterogeneity of main
428 effects across the IQ distribution (Figure 4B top). However, paternal EA did show a significant
429 positive age interaction at the 95th percentile (Figure 4B bottom) which was not observed when
430 considering the effect on mean IQ (Figure 4A bottom), suggesting the influence of paternal EA on

431 IQ increases at later stages of development among those at the top of the IQ distribution. Thus,
432 in summary, our results indicate that the factors that best predict which children will have cognitive
433 difficulties or will excel cognitively across childhood are different from those that best predict
434 average IQ.



436 Figure 4

437 Associations between genetic and other factors and IQ across ages in ALSPAC. A) Standardized effects
438 and 95% confidence intervals for the main effects (top) and measure-by-age-interaction effects (bottom)
439 obtained from mixed-effects models fitted for IQ post-imputation. These were obtained from four models,
440 as indicated in the key: marginal associations from models in which only the indicated variable(s) were
441 included in the model (in addition to standard covariates), and conditional associations from models in
442 which all the variables were included in the same model. Note that we estimated the marginal and
443 conditional effects either using only individuals who had gestational age information (n=1,595) or all
444 individuals (n=4,563), dropping the “weeks born preterm” variable in the latter case. See Methods for
445 details. B) Standardized effects and 95% confidence intervals for the main effects (top) and measure-by-
446 age-interaction effects (bottom) for quantile regression of the 5th, 50th, and 95th percentile estimated from
447 mixed-effects quantile regression modeling for IQ post-imputation using both marginal and conditional
448 associations as in (A). In (B), marginal effect sizes for the child’s PGI_{EA}, RVB_{pLoF}, and RVB_{Missense}, which
449 were previously shown in Figures 1 and 2 are replotted to facilitate comparisons of effect size with the
450 conditional analysis results. Asterisks indicate whether the estimate is significantly different from 0; note
451 that curly brackets with asterisks indicate that the estimates spanned by the bracket are all significant.

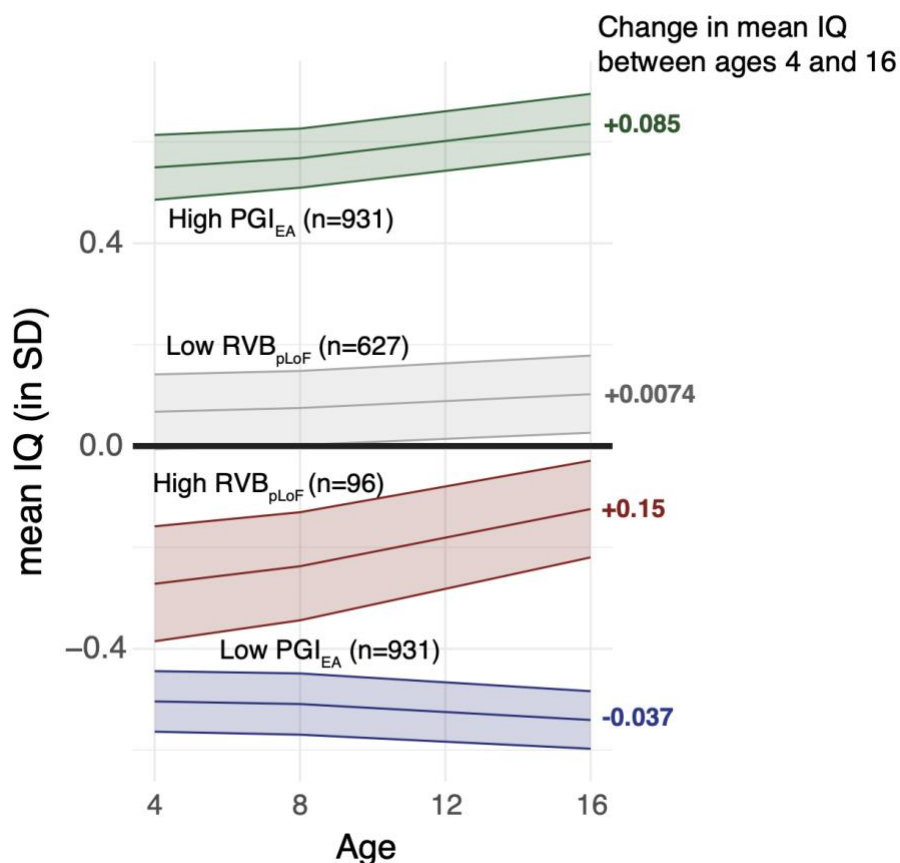
452 Discussion

453 Here we explored the contribution of common and rare variants to cognitive performance
454 longitudinally across childhood and adolescence. We showed that common and rare variants
455 differ in their effects on IQ and school achievement across time. While the effect of rare damaging
456 variants attenuates between childhood and adolescence (Figure 2), the effect of common variants
457 associated with educational attainment and cognitive performance in adulthood increases (Figure
458 1). In both cases, these changes are due to direct genetic effects, with no evidence for an age
459 interaction effect of non-transmitted common or rare alleles in parents (Figure 1B), nor indeed for
460 any effects of non-transmitted rare alleles on average IQ at all (Figure 2B). Our common variant
461 findings are similar to those of Malanchini *et al.* who showed that the effect of a polygenic score
462 for non-cognitive skills on academic achievement increased over development in a different
463 cohort, including in within-family analyses⁵³.

464
465 In theory, the increasing effect of polygenic indices for educational attainment and adult cognitive
466 performance with age could simply be because the underlying SNP effects have been estimated
467 on adult phenotypes which are better correlated with IQ in later childhood than early childhood^{54,55}.
468 Having said that, we observed suggestive evidence for an increase in the total SNP heritability of
469 IQ with age in ALSPAC (p=0.053) (Table S2), consistent with the trend reported in another
470 cohort⁴⁰. Additionally, the common variant genetic correlations between IQ measured at the
471 different ages and educational attainment measured in adulthood were not significantly different
472 from 1 (Table S3), suggesting the increase in PGI effects are most likely due to genome-wide
473 amplification of genetic effects as opposed to different common variants impacting cognitive ability
474 differentially at different ages¹¹. By contrast, our finding that the effects of rare variants attenuate
475 as children age cannot be explained by the way the variant weights were obtained; this is because
476 the weights are based on estimates of historical negative selection against deleterious variants in
477 each gene in large population-based cohorts of adults⁴⁴, rather than through association studies
478 with a phenotype.

479
480 Genetic studies typically test for genetic effects on the mean of the phenotype, although some
481 have also considered effects on variance^{56–59} or differential effects on different quantiles of
482 anthropometric traits and biochemical measures⁶⁰. Here, we examined the longitudinal effects of
483 common and rare variants on different quantiles of the IQ distribution, which essentially tests for
484 an effect on the phenotypic variance and skew. In so doing, we found that increasing effects of
485 PGI_{EA} and PGI_{Cog} on mean IQ with age were driven by effects on the top half of the phenotype
486 distribution, whereas the attenuating effects of RVB_{pLoF} were driven by those in the lower tail
487 (Figure 3). The latter observation appears to be driven by RVB_{pLoF} having a larger effect on the
488 5th than the 95th percentile of IQ at age 4 and 8, but similar effects at the distribution tails by age
489 16 (Figure S4). Results based on measures of cognitive performance in MCS and UK Biobank
490 were concordant with these observations from ALSPAC (Extended Data Figure 7B). These results
491 imply that the genetic profile of children in the highest and lowest ranges of cognitive ability differ
492 across development (Extended Data Figure 9). Figure 5 summarizes our key findings for the IQ
493 trajectories of individuals with different common and rare variant genetic backgrounds; children in
494 the high versus low PGI_{EA} groups become more differentiated across development, though with
495 more of the stratification occurring due to increasing IQ particularly in the high PGI_{EA} group, while
496 the stratification in IQ due to RVB_{pLoF} is strongest at the earlier ages and attenuates particularly
497 in the high RVB_{pLoF} group.

498
499 Our results imply that there is higher variance in IQ amongst individuals with higher RVB_{pLoF} in
500 early childhood, which could be potentially due to gene-by-environment or gene-by-gene effects,
501 or simply to stochasticity. This effect on the variance, particularly due to increased effects on the
502 lower tail of the IQ distribution, provides a mechanism to explain the pervasiveness of incomplete
503 penetrance and variable clinical presentation in rare neurodevelopmental conditions. This is
504 because an increased proportion of children with high rather than low RVB_{pLoF} will cross the liability
505 threshold and be diagnosed with these conditions, but some will be well below diagnostic
506 thresholds. Multiple neurodevelopmental conditions exhibit a high degree of phenotypic
507 variability, even amongst carriers of the same causal mutation, such as in neurofibromatosis type
508 1⁶¹. Although quantitative measures of intellectual impairment are relatively rare in studies of
509 these conditions, there is evidence, for example, that patients with tuberous sclerosis complex
510 (TSC) have not only lower *mean* IQ but also higher *variance* in IQ than unaffected sibling controls
511 (F-test for a difference in variance between cases and controls; $p=0.004$ for TSC1, $p=0.033$ for
512 TSC2)⁶². Taken together, our results support two hypotheses for the incomplete/variable
513 penetrance of rare NDC-associated variants. Firstly, these variants impact variance in cognitive
514 ability early in life, consistent with heterogeneous phenotypes of children with NDCs. Secondly,
515 they have larger effects on average cognitive ability in early childhood than later in life, consistent
516 with apparently clinically unaffected parents passing on these pathogenic variants to affected
517 children.



518

519 Figure 5

520 Summary of phenotypic trajectories across development, as inferred in this work. The plot shows average
521 trajectories of IQ (inferred post-imputation) for individuals grouped by genetic measures. The high/low
522 PGI_{EA} groups are individuals with a value that is one or more standard deviations above/below 0. The low
523 RVB_{pLoF} group are individuals with RVB_{pLoF} below 0.01 (approximately 9.6% of individuals) and the high
524 RVB_{pLoF} group are individuals with RVB_{pLoF} greater than 0.4 (approximately 1.5% of individuals); these
525 cutoffs were chosen arbitrarily for illustrative purposes. The change in mean genetic measure/IQ between
526 ages 4 and 16 are shown on the right hand side of the plots. Bands indicate 95% CI. The decrease in mean
527 IQ in the low PGI_{EA} group is explained by the fact that, due to PGI_{EA} effects becoming stronger towards the
528 top of the IQ distribution, those that had a high IQ earlier in development will tend towards their genetically
529 predicted lower IQ at later ages, thereby lowering the average IQ in this group.

530

531 The increasing heritability of IQ with age is well established but its causes remain unclear¹¹. In
532 contrast to our results for rare variants, we found evidence across cohorts for *increasing* direct
533 genetic effects of PGIs with age, particularly at the top of the IQ distribution; to our knowledge,
534 this has not been previously demonstrated. This may be relevant to the so-called 'Matthew effect',
535 the phenomenon whereby individual differences in ability compound over time and increase gaps
536 in cognitive and academic outcomes as children age⁶³⁻⁶⁶. If this effect is particularly driven by
537 those with high cognitive performance, this could explain the increase in common variant effects
538 over time that we observe for the upper tail of the phenotype distribution. Several potential

539 mechanisms could drive this, including evocative gene-environment correlations, such as high-
540 performing children being selected into more from cognitively-stimulating environments, or active
541 gene-environment correlations, such as high-performing children being more effective learners
542 and hence increasing their cognitive performance more relative to their peers⁶⁷. Potentially
543 relevant to this is our observation for a significant age interaction effect for paternal EA at the 95th
544 quantile (Figure 4B).

545
546 When comparing the relative magnitude of the main effects of genetic versus other factors on IQ
547 in ALSPAC, we found that the RVB contribution was slightly larger than but broadly comparable
548 to those of the perinatal exposures, and the direct effect of common variants associated with EA
549 was comparable to that of parental EA (Figure 4A top), highlighting the substantial contribution of
550 genetic variation across the allele frequency spectrum to variance in cognitive performance.
551 Importantly, we showed that inherited rare damaging coding variants explain more variance in
552 childhood IQ in the general population than do *de novo* mutations (Supplementary Note 3), in
553 contrast to what is observed in cohorts of children with neurodevelopmental disorders^{21,32}. We
554 further showed that the effects of both rare damaging variants and perinatal factors on cognitive
555 ability attenuate as children age (Figure 4A bottom). This may be due to acute, time-limited effects
556 during early neurodevelopment that can be attenuated by later plasticity, potentially in response
557 to environmental influences. If this is true, one might predict that the attenuation of these effects
558 with age are strongest in less deprived households. Testing this hypothesis will need larger
559 datasets than studied here. In contrast to these other factors, the effect of parental EA on average
560 IQ does not change across development, whereas the direct effect of EA-associated common
561 variants increases (Figure 4A bottom), suggesting a cumulative influence. These observations
562 have important implications for how we identify people at risk of poor outcomes in early versus in
563 later life.

564
565 There are several limitations of this study. Firstly, our primary findings about changing genetic
566 effects with time are based on measurements of IQ at only three time points in a single cohort
567 (ALSPAC). There is a dearth of cohorts with longitudinal measures of IQ in childhood and
568 adolescence with sufficient sample size and appropriate genetic data for us to attempt direct
569 replication. Thus, we have relied on replication with school grades measured at two timepoints in
570 ALSPAC (not totally independent of our IQ results, given the overlapping sample) (Extended Data
571 Figures 2 and 4; Figure S5), or, for some analyses, a single measure of cognitive performance
572 from MCS and UK Biobank (Extended Data Figure 7, Figure S1, Figure S6), which we found to
573 show strong genetic correlations with IQ in ALSPAC (r_g 1.09, 95% CI [0.97-1.21]) and with adult
574 cognitive performance⁴² (r_g 0.89, [0.69-1.09]) and EA⁴⁵ (r_g 0.89, [0.72-1.08]). Broadly, the results
575 from these replication analyses supported our primary findings in ALSPAC. Secondly, IQ tests
576 are less reliable in early life⁶⁸, and those used in ALSPAC may be less accurate at measuring the
577 tails of the distribution⁶⁹. If the accuracy at the tails differed between the tests used at different
578 ages, this could potentially have induced spurious interaction effects between the genetic scores
579 and age. However, the fact that we see age interaction effects in opposite directions for common
580 versus rare variants for the same trait, and replicate trends in other cohorts and with other
581 cognitive performance measures, suggests that this is not a likely scenario. Thirdly, our
582 assessment of perinatal factors affecting IQ is limited by sample size (so that we had to aggregate

583 various maternal illnesses into a single variable) and by the limited range of gestational ages in
584 ALSPAC; all children in this subsample were born after 32 weeks' gestation, thus excluding very
585 and extremely premature babies who might be expected to have the greatest cognitive deficits⁸,
586 potentially explaining why we saw no effects of gestational age on the 5th centile (Figure 4B). A
587 final limitation is that our results may be affected by non-random missingness within the cohorts
588 and biased ascertainment and attrition across time, known to be present in both birth cohorts^{35,70}.
589 We have attempted to mitigate non-random missingness by imputation of missing IQ measures
590 in ALSPAC (Figure S1) and by Mendelian imputation of unmeasured parental genotypes for our
591 trio-based PGI analyses. To mitigate ascertainment bias and attrition, we incorporated weights in
592 MCS to render the sample representative of the whole UK population. In general, our conclusions
593 in ALSPAC were unchanged when analyzing IQ before versus after imputation, although the latter
594 was obviously better powered, and there were some differences particularly in the findings from
595 the quantile regressions (Supplementary Note 4; Figure 3BC *versus* Figure S3; Figure S4A
596 *versus* S4B). However, one example of an analysis that is likely to have been impacted by
597 ascertainment bias is the estimation of the fraction of the rare variant effect on IQ that is due to
598 *de novo* mutations, as noted in Supplementary Note 3 (Extended Data Figure 6).

599
600 Our study prompts several strands of future work. Perhaps most importantly, future research
601 should extend upon our findings to investigate how genetic and other factors might be best
602 employed to identify children at risk of poor cognitive outcomes, so that interventions may be
603 targeted at those who most need help. It should also seek to confirm the relevance of our
604 observations to the incomplete penetrance of rare damaging variants in NDCs. If we had NDC
605 cohorts with genetic and longitudinal phenotype data from both affected children and parents who
606 appear to be clinically unaffected, we could directly test whether in fact, these variants were
607 associated with reduced cognitive ability or educational achievement earlier in the parents' lives,
608 and whether their effects on these traits attenuate as they aged. Finally, future work should seek
609 to better understand why there are differential time-varying genetic effects on children depending
610 on their level of cognitive ability, and why the effect of our rare variant burden scores attenuates
611 with time. For example, is the latter observation purely driven by the expression patterns of the
612 evolutionarily constrained genes that are more heavily weighted in this score (Extended Data
613 Figure 5A), with these prenatally expressed genes becoming progressively less important in brain
614 function as children age? Or is it that children with particularly marked cognitive deficits in early
615 childhood, who appear to be particularly influenced by these rare variants (Figure 3C), are
616 targeted for interventions which help to mitigate the effects of these rare variants over time? More
617 broadly, our results suggest that heteroscedastic and time-varying effects of genetic variants on
618 human phenotypes deserve more exploration.

619 Abbreviations

620 GWAS: Genome-wide association study; NDCs: neurodevelopmental conditions; PTV: protein
621 truncating variant; SNP: single nucleotide polymorphism; ALSPAC: Avon Longitudinal Study of
622 Parents and Children; MCS: Millennium Cohort Study; IQ: Intelligence quotient; PGI: polygenic
623 index; EA: educational attainment; Cog: the cognitive component of educational attainment;
624 NonCog: the non-cognitive component of educational attainment; RBV: rare variant burden; pLoF:

625 predicted loss of function; TSC: tuberous sclerosis complex; QC: quality control; PCA: principal
626 component analysis; MAF: minor allele frequency; HWE: Hardy-Weinberg Equilibrium; LD:
627 linkage disequilibrium.

628 Acknowledgements

629 We thank the Human Genetic Informatics group at the Wellcome Sanger Institute for assisting in
630 the generation and preparation of the whole exome sequencing data for the ALSPAC and MCS
631 cohorts and general technical support. We thank Alexandra Havdhal for helpful discussions.

632
633 ALSPAC: We are extremely grateful to all the families who took part in ALSPAC, the midwives for
634 their help in recruiting them, and the whole ALSPAC team, which includes interviewers, computer
635 and laboratory technicians, clerical workers, research scientists, volunteers, managers,
636 receptionists and nurses. The UK Medical Research Council and Wellcome (Grant ref:
637 217065/Z/19/Z) and the University of Bristol provide core support for ALSPAC. This publication is
638 the work of the authors and Hilary Martin will serve as a guarantor for the contents of this paper.
639 Genome-wide genotyping data was generated by Sample Logistics and Genotyping Facilities at
640 the Wellcome Sanger Institute and LabCorp (Laboratory Corporation of America) using support
641 from 23andMe. This research was specifically funded by the UK Medical Research Council and
642 Wellcome (Grant ref: 076467/Z/05/Z) and the Department for Education and Skills (Grant ref:
643 EOR/SBU/2002/121). A comprehensive list of grants funding is available on the ALSPAC website:
644 <http://www.bristol.ac.uk/alspac/external/documents/grant-acknowledgements.pdf>

645
646 MCS: We are grateful to the Centre for Longitudinal Studies (CLS), UCL Social Research Institute,
647 for the use of these data and to the UK Data Service for making them available. However, neither
648 CLS nor the UK Data Service bear any responsibility for the analysis or interpretation of these
649 data.

650
651 UKB: This research has been conducted using the UK Biobank Resource under application
652 number 44165.

653
654 This research was funded in part by Wellcome (grant no. 220540/Z/20/A, “Wellcome Sanger
655 Institute Quinquennial Review 2021–2026”). For the purpose of open access, the authors have
656 applied a CC-BY public copyright license to any author accepted manuscript version arising from
657 this submission. D.S.M. is supported by a Gates Cambridge Scholarship (OPP1144).

659 Author contributions

660 DSM conducted all the analyses. DSM, MK, PD, QH, WH, and EW carried out data preparation
661 and quality control with supervision by SL, MEH, and HCM. MK led the whole exome sequencing
662 data preparation for ALSPAC and MCS with assistance from DSM and EW. PD conducted the *de*
663 *novo* variant calling in ALSPAC and MCS and conducted variant quality control for the UK Biobank
664 whole exome sequencing data. WH conducted sample quality control for the UK Biobank whole

665 exome sequencing data and assisted with preparation of UK Biobank exome data. OW assisted
666 with selection of other non-genetic factors and generated PGI SNP weights. DSM, OW, QH, RA,
667 MEH and HCM provided key intellectual input. HCM supervised the analyses and directed the
668 study. DSM and HCM wrote the first draft of the manuscript with input from MEH. All authors read
669 and commented on the final manuscript.
670

671 Data availability

672
673 Researchers can apply to access data from ALSPAC
674 (<https://www.bristol.ac.uk/alspac/researchers/access/>), MCS ([https://cls.ucl.ac.uk/dataaccess-](https://cls.ucl.ac.uk/dataaccess-training/data-access/)
675 [training/data-access/](https://cls.ucl.ac.uk/dataaccess-training/data-access/)), and UK Biobank ([https://www.ukbiobank.ac.uk/enable-your-](https://www.ukbiobank.ac.uk/enable-your-research/apply-for-access)
676 [research/apply-for-access](https://www.ukbiobank.ac.uk/enable-your-research/apply-for-access)).
677

678 Online Methods

679 Cohorts

680 We report results from the Avon Longitudinal Study of Parents and Children (ALSPAC)^{35,71},
681 Millennium Cohort Study³⁶ (MCS), and UK Biobank cohorts.
682

683 ALSPAC

684 In ALSPAC, pregnant women with expected deliveries between April 1st 1991 and December 31
685 December were recruited in the greater Bristol area (formerly Avon county), resulting in an initial
686 sample of 14,541 pregnancies enrolled into the study, of which 13,988 resulted in live births of
687 children surviving to age 1. Data collected after the age of 7 was available for an additional 906
688 pregnancies from other phases of enrollment, which resulted in an additional 913 children that
689 survived to age 1. At initial enrollment, 14,203 unique mothers were in the study, which increased
690 to 14,833 unique mothers enrolled after the additional phases of enrollment (G0 mothers). The
691 partners of G0 mothers (G0 partners) were also invited to participate in the study, of which 12,113
692 provided data at one point in the study and 3,807 are currently enrolled. From birth to early
693 adulthood, mother and children were followed up with questionnaires and clinical and
694 psychometric data collection across several time points. Biosamples used for genotyping and
695 exome sequencing were obtained from most children and some of the mothers and fathers.
696

697 In the current study, data from 6,495 unrelated children with European inferred genetic ancestry
698 (G1 children; described below) were used, along with genetic and/or survey data collected on
699 4,968 G0 mothers and 4,563 G0 partners. Please note that the study website contains details of
700 all the data that is available through a fully searchable data dictionary and variable search tool:
701 <http://www.bristol.ac.uk/alspac/researchers/our-data/>. Ethical approval for the study was obtained

702 from the ALSPAC Ethics and Law Committee and the Local Research Ethics Committees.
703 Consent for biological samples has been collected in accordance with the Human Tissue Act
704 (2004). Informed consent for the use of data collected via questionnaires and clinics was obtained
705 from participants following the recommendations of the ALSPAC Ethics and Law Committee at
706 the time. At age 18, study children were sent 'fair processing' materials describing ALSPAC's
707 intended use of their health and administrative records and were given clear means to consent or
708 object via a written form. Data were not extracted for participants who objected, or who were not
709 sent fair processing materials.
710

711 MCS

712 MCS recruited 18,552 pregnant mothers (2000-2002) using a sampling scheme to ensure a
713 nationally representative sample across the UK, as previously described³⁶. Mothers and children
714 were followed longitudinally and had genetic data collected at age 14 from children, mother, and
715 fathers where available. Ethical approval for the collection of saliva samples from these individuals
716 as part of the sixth sweep was obtained from London-Central Research Ethics Committee.
717 Genotype and newly generated exome data are available for ~8,000 and ~7,000 children,
718 respectively (~13,000 and ~7,000 parents).
719

720 UK Biobank

721 The UK Biobank is a prospective cohort of over 500,000 individuals sampled throughout the UK
722 between 2006 and 2010. Individuals have extensive phenotype data and genetic data including
723 genotype array⁷² and whole exome sequence data⁷³.

724 Cognitive performance measures across cohorts

725 In this study we used various cognitive performance and school performance measures across
726 the three cohorts.
727

728 In ALSPAC, children had IQ measured at ages 4 (Wechsler Preschool and Primary Scale of
729 Intelligence), 8 (Wechsler Intelligence Scale for Children), and 16 (Wechsler Abbreviated Scale
730 of Intelligence). Linked educational records are available, including national standardized exam
731 scores in English, Math, and Science administered at the end of Key Stage 2 (Year 6 at around
732 11 years old) and Key Stage 3 (Year 9 at around 14 years old). To create a composite measure
733 of academic performance, we standardized each score and, at a given Key Stage examination
734 point, computed a one-factor model score using *factanal* function in R using the Bartlett method
735 for scoring, explaining 74% and 77% of the variance at Key Stage 2 and 3 exams, respectively.
736 The factor loadings and factor variance explained for the three exams were nearly identical at
737 Key Stage 2 and 3 (Table S1), implying longitudinal invariance.
738

739 In MCS, children completed various cognitive performance tests at several ages. Those at later
740 ages had a greatly reduced sample size, so we focused on those at ages 3 to 7. These included
741 Bracken School Readiness at age 3, reading vocabulary at ages 3 and 5, pattern construction at

742 ages 5 and 7, and word reading and progress in math at age 7. These were summarized into a
743 single cognitive performance measure using a one-factor model score using the *factanal* function
744 in R and Bartlett method for scoring, explaining 39% of the variance.

745
746 In UK Biobank, individuals were asked thirteen questions testing verbal-numerical reasoning in a
747 limited time frame during the initial assessment visit. We used the sum of questions answered
748 correctly as a measure of fluid intelligence (data field 20016.0), as has been used previously in
749 genetic studies of cognitive ability ⁷⁴.

750 Imputation of IQ values in ALSPAC

751 Imputation of missing IQ values was carried out using *SoftImpute*⁷⁵ using `rank.max = 4.5` and
752 `lambda = 4.5`. Before imputation, all variables were standardized to have mean 0 and variance
753 1. To assess the imputation accuracy obtained using three potential sets of variables (described
754 below), we set 100 random individuals with measured IQ values at a given age to missing,
755 conducted phenotype imputation, and calculated correlations between the true measured values
756 and the imputed values, repeating this procedure 100 times.

757
758 We considered the following sets of variables:

- 759 1) Base set: sex (kz021), birth weight (kz030), maternal and paternal socio-economic groups
760 (b_seg_m and b_seg_p), and IQ values at ages 4 (cf813), 8 (f8ws112), and 16 (fh6280).
- 761 2) Expanded set: base set plus development score at age 2 (cf783), sociability score at age
762 3 (kg623a/c), additional verbal and performance IQ at age 4 (cf811, cf812), nonword
763 repetition and multisyllabic word repetition at age 5 (cf470, cf480), communication score
764 at age 6 (kq517), Skuse social cognition score at age 7 (kr554a/b), cognitive scores at
765 age 8 including Sky Search, Diagnostic Analysis of Nonverbal Accuracy, nonword
766 repetition, verbal and performance IQ, children communication checklist score (f8at062,
767 f8dv443, f8dv444, 8dv445, f8dv446, f8sl100, f8sl101, f8sl102, f8ws110, and f8ws111,
768 ku506a).
- 769 3) Auxiliary set: expanded set excluding base set variables.

770
771 When calculating the imputation accuracy using the expanded or auxiliary sets, we removed
772 verbal and performance IQ at each age, although in practice very few children had only one
773 measured at a given age.

774
775 For the imputation of the final IQ values, we used the expanded set and required that each
776 individual had nonmissing values for at least one IQ test and at least 20% of the variables used
777 for imputation. Final IQ values were standardized to mean 0 and standard deviation of 1.

778 Genotype data preparation and imputation

779 ALSPAC

780 ALSPAC genotype data were generated and processed as described in ⁷¹. We further removed
781 individuals with high genotype missingness >3%. We restricted analyses to autosomal SNPs with
782 MAF >0.5%, missingness rate <3%, and that had HWE test $p > 1 \times 10^{-5}$.

783
784 We used KING⁷⁶ for relatedness inference and removed 152 samples who had first degree
785 relationships but were reported as coming from different families and another 16 samples who
786 did match available exome sequencing data supposedly for the same individuals resulting in
787 8,831 children, 9,302 mothers, and 1,706 fathers. To identify a set of unrelated children, we
788 iteratively identified the child with the greatest number of genetically inferred relatives (3rd degree
789 or closer) and removed them, recalculated the number of inferred relatives per child, and repeated
790 the first step until no children were inferred to have any relatives. This resulted in a total of 6,495
791 unrelated children with genotype array and whole exome sequence data.

792
793 To identify individuals of genetically inferred European ancestry, we projected samples onto 1,000
794 Genomes phase 3 individuals⁷⁷ using the smartpca function from EIGENSOFT version 7.2.1⁷⁸.
795 We used linkage disequilibrium (LD)-pruned SNPs (pairwise $r^2 < 0.2$ in batches of 50 SNPs with
796 sliding windows of 5) with MAF > 5% and removed 24 regions with high or long-range LD,
797 including the HLA⁷⁹. All ALSPAC samples projected onto European ancestry samples. We then
798 performed PCA identically on the unrelated ALSPAC samples and projected all individuals into
799 the PCA space.

800
801 Prior to imputation, we removed palindromic SNPs, SNPs that were not in the imputation
802 reference panel, and SNPs with mismatched alleles. We imputed the samples to the TOPMed r2
803 reference panel using the TOPMed imputation server⁸⁰⁻⁸². We kept well imputed common variants
804 with Minimac4 $R^2 > 0.8$ and MAF >1%.

805 MCS

806 MCS genotyped data were generated and processed as described in ⁸³. A set of unrelated
807 individuals with genetically-inferred European ancestry were described in a similar manner to
808 ALSPAC, as described previously ²⁵. We kept well imputed common variants with Minimac4 R^2
809 >0.8 and MAF >1%.

810

811 UK Biobank

812 UK Biobank genotype data were generated, processed, and imputed by UKB as described in ⁷².
813 Sample quality control consisted of excluding individuals with >3% missingness, inconsistent sex,
814 sex aneuploidy, or withdrawn consent and relatedness was similarly calculated using KING as
815 previously described. As in the other cohorts, we kept autosomal SNPs with MAF >1%,
816 missingness rate <3%, and passed the HWE test ($p\text{-value} > 1 \times 10^{-5}$). To identify UKB individuals
817 with genetically inferred European ancestry, we similarly projected samples onto the 1,000

818 Genomes Phase 3 individuals and assigned individuals to a genetic ancestry based on their
819 Mahalanobis distance to the nearest continental ancestry group centroid using the top 6 PCs.
820 Those more than 6 standard deviations from the centroid along any axis were removed. Unrelated
821 individuals were identified using the iterative exclusion procedure as previously described,
822 resulting in 387,531 unrelated individuals. PCs were recalculated in this subset of unrelated
823 individuals using smartpca as previously described, and related individuals were projected into
824 this PCA space.

825 Calculating polygenic scores

826 SNP weights for polygenic scores were estimated using LDpred2-auto⁸⁴, which does not require
827 a tuning dataset and automatically estimates the required hyper-parameters from the discovery
828 sample⁸⁵. The LD reference panel was computed from unrelated individuals from the target
829 dataset for a set of 1,444,196 HapMap3+⁸⁶ variants⁷². GWAS summary statistics for EA¹⁶
830 excluding 23andMe or 23andMe only (used for PGI_{EA} UK Biobank samples), EA-Cog and EA-
831 NonCog⁴² were matched with the list of overlapping SNPs.

832
833 Once the weights were generated, we scored individuals using the --score function in PLINK v1.9,
834 which calculates the weighted sum of genotypes across a set of SNPs for each individual.

835 Mendelian imputation of parental genotypes

836 When an individual had at least one parent with genotype data in the cohort, we imputed the
837 expected parental genotype of the other parent. To do so, we used *snipar*²⁰ across the three
838 cohorts. We supplied relatedness inference using KING output and used the default options
839 throughout. We used the previous weights derived from each GWAS using LDpred2-auto to
840 calculate the PGIs in the full trios using the pgs.py script provided in the *snipar* package.

841 GWAS of IQ and cognitive performance

842 We used the linear regression function *lm* in R to conduct GWASs on the IQ measures pre- and
843 post-imputation in ALSPAC and the cognitive performance measure in MCS on unrelated
844 genetically inferred European ancestry individuals, controlling for 10 genetic PCs and sex. We
845 removed variants with MAF<1% or missingness >2%.

846 Heritability and genetic correlations

847 We used both GREML-LDMS³⁹ and LD score regression^{87,88} to estimate SNP heritabilities and
848 genetic correlations from the summary statistics of the GWASs conducted on the IQ measures
849 and external GWASs using the previously described LD reference panel on HapMap3 SNPs.

850 Other exposures impacting IQ in ALSPAC

851 We considered the following exposures: maternal and paternal educational attainment (EA),
852 weeks born preterm, and a composite variable representing maternal illness. For educational
853 attainment, we used the highest qualification reported by the parent and coded it as done

854 previously reported¹⁶, with a university degree equalling 20 years of education, A levels as 13, O
855 levels/vocational as 10, and Certificate of Secondary Education/no degree as 5 (c645a and c666a
856 for the mother and father, respectively). Maternal illness was defined as a binary variable
857 indicating whether or not a mother had at least one of the following conditions reported during the
858 pregnancy in her obstetric clinical records: preeclampsia, anemia (DELP_1060), any diabetes
859 (pregnancy_diabetes), or genital herpes, gonorrhoea, syphilis, urinary tract infection, vaginal
860 infection, or hepatitis B noted during delivery (DEL_P1050-1055). Weeks born preterm was coded
861 as 40 minus the gestational age at birth in weeks assessed in a formal pediatric assessment
862 (DEL_B4401). All variables were standardized to have mean zero and standard deviation 1.

863 Exome sequencing data preparation

864 Whole exome sequencing data quality control for ALSPAC and MCS cohorts was carried out by
865 the Human Genetics Informatics team at the Sanger Institute as described in ⁸⁹. Briefly, GATK
866 v4.2 was used to call short variants (SNVs and indels) in 11,994 samples from ALSPAC and
867 11,916 samples from MCS. Sample quality-control (QC) measures were employed to remove
868 outliers on several metrics (e.g., heterozygosity, variant counts) and likely sample mismatches.
869 To identify low quality variants (variant QC), a random forest was trained on pre-defined truth sets
870 in each cohort individually. The random forest filtering was then applied in combination with
871 genotype-level and missingness filters to balance precision, recall, true and false positive rates,
872 and synonymous transmission ratios. Specifically, SNVs were filtered (genotypes set to missing)
873 if they an allele depth (DP) < 5, a heterozygous allele balance ratio (AB) < 0.2, or a genotype
874 quality (GQ) < 20 (ALSPAC) or < 15 (MCS); Indels were filtered using these thresholds: DP < 10,
875 AB < 0.3, GQ < 10 (ALSPAC) or GQ < 20 (MCS). The variants were excluded if they failed the
876 random forest filtering or if the fraction of missing genotypes (missingness) exceeded 0.5. The
877 final dataset included 8,436 children and 3,215 parents in ALSPAC and 7,667 children and 6,925
878 parents in MCS. Calling and QC of *de novo* mutations is described in the Supplementary Methods.

879
880 In UK Biobank, we performed quality control for whole exome sequencing data on 469,836
881 participants within the UKB research analysis platform. First, we split and left-aligned multi-allelic
882 variants in the population-level Variant Call Format files into separate alleles using *bcftools*
883 *norm*⁹⁰. Next, we performed genotype-level filtering using *bcftools* filter separately for Single
884 Nucleotide Variants (SNVs) and Insertions/Deletions (InDels) using a missingness-based
885 approach. Specifically, SNV genotypes with a depth lower than 7 and genotype quality lower than
886 20, or InDel genotypes with a depth lower than 10 and genotype quality lower than 20, were set
887 to missing. We further tested for an expected alternate allele contribution of 50% for heterozygous
888 SNVs using a binomial test, and SNV genotypes with a binomial test p-value ≤ 0.0001 were set
889 to missing. Finally, we recalculated the proportion of individuals with a missing genotype for each
890 variant and excluded all variants with a missingness value greater than 50%.

891 Classification of deleterious rare variants

892 All variants were annotated using the MANE transcript from Ensembl⁹¹. In MCS and ALSPAC,
893 rare pLoFs were defined as pLoFs annotated as high confidence by LOFTEE³⁴ that had CADD⁹²
894 (if SNVs) > 25, were not located in the last exon or intron, and had a gnom-AD³⁴ V3 allele
895 frequency of 3×10^{-5} (up to ~ 5 occurrences in gnomAD r3 genomes & ~ 10x in exomes) and an
896 in sample allele frequency of <math>< 0.1\%</math> among the unrelated set of children from that cohort⁹¹. Rare
897 damaging missense variants were defined using identical allele frequency and CADD filters to
898 pLoFs but were additionally required to have an MPC score⁹³ ≥ 2 . Rare synonymous variants
899 were defined with identical allele frequency thresholds.

900
901 In UKB individuals with inferred European genetic ancestry, we defined rare variants as those
902 with a within-sample allele frequency <math>< 0.001\%</math>. For pLoFs, we retained only those variants
903 defined as high-confidence PTVs by LOFTEE and CADD > 25 as in MCS and ALSPAC. For
904 missense variants, we defined the damaging missense variants by including variants with REVEL
905 > 0.5, AlphaMissense⁹⁴ > 0.56, and MPC > 2.

906

907 Calculating rare variant burden scores

908 We calculated RVB using the following formula:

$$909 \quad RVB_{i,c} = \sum_{g \in G} I_{g,c}(i) S_g$$

910 where $I_{g,c}(i)$ is an indicator function for whether an individual i has a variant of consequence c in
911 gene g , S_g is the fitness cost for heterozygous carriers of a pLoF allele in gene i estimated in Sun
912 *et al.*⁴⁴, and G is the set of all autosomal genes.

913

914 For analyses to ascertain the relative contribution of *de novo* versus inherited variants
915 (Supplementary Note 2), we also calculated a separate rare variant burden metric which we call
916 constrained variant count:

$$917 \quad \text{constrained pLoF count}_i = \sum_{g \in \text{constrained genes}} I_{g,pLoF}(i)$$

918 where $I_{g,pLoF}(i)$ is an indicator function for whether an individual i has a pLoF in gene g , and
919 *constrained genes* is the set of genes identified as constrained in ⁴⁴.

920

921 Sampling and non-response weights in MCS

922 Sampling weights were developed by MCS to adjust for the nonrandom sampling scheme devised
923 for the study⁹⁵. We used the full UK sampling weights. Nonresponse inverse probability weights
924 were developed for each sample as described previously²⁵. Briefly, we used logistic regression to
925 predict whether an individual had complete data for a given regression. We then extracted the
926 predicted values for all individuals with complete data from the logistic regression which

927 correspond to their relative probabilities of having complete data, calculated the inverse of that
928 value, and used that as the nonresponse weight. To combine sampling and nonresponse weights,
929 we multiplied the two weights and incorporated them into the regressions.

930 Associations between genetic measures and traits

931 Cross-sectional associations for a genetic score and IQ were conducted using the *lm* function in
932 R, restricting to unrelated samples with genetically-inferred European ancestry as follows:

$$933$$
$$934 IQ_i \sim G_i + PC1_i + \dots + PC10_i + sex_i$$

935
936 where G_i is the genetic score (PGI or RVB) for child i and $PC1-10_i$ are their genetic PCs.

937
938 Genetic scores, unless otherwise stated, were standardized to mean 0 and standard deviation 1.
939 In trio-based analyses, the parental genetic values were similarly standardized and regression
940 was conducted as follows:

$$941$$
$$942 IQ_i \sim G_i + G_{i,m} + G_{i,p} + PC1_i + \dots + PC10_i + sex_i$$

943
944 where $G_{i,m}$ and $G_{i,p}$ are the genetic scores for child i 's mother and father, respectively.

945
946 Mixed effect linear models were conducted using the *lme4* package in R⁹⁶. The same covariates
947 were used for the cross-sectional analysis with the addition of age, an age-by-genetic score
948 interaction effect and a child-specific random intercept term as follows:

$$949$$
$$950 IQ_{i,t} \sim age_{i,t} + G_i + age_{i,t} * G_i + PC1_i + \dots + PC10_i + sex_i + C_i$$

951
952 where $age_{i,t}$ and $IQ_{i,t}$ are child i 's age and IQ at age t and C_i is a child-specific random effect
953 intercept. Age was coded as age-4 such that the genetic predictor intercept estimate was
954 equivalent to the effect at the first age at which IQ data were collected. In the trio-based analyses,
955 an age interaction effect was additionally modeled for the parental genetic values as follows:

$$956$$
$$957 IQ_{i,t} \sim age_{i,t} + G_i + age_{i,t} * G_i + G_{i,m} + age_{i,t} * G_{i,m} + G_{i,p} + age_{i,t} * G_{i,p} + PC1_i + \dots + PC10_i + sex_i + C_i$$

958
959 For cross-sectional and longitudinal quantile regression modeling, we used the R package
960 *quantreg*⁹⁷ and *rqpd*⁹⁸, respectively, using the same models as above. Mixed-effects model
961 standard errors were determined using bootstrapping with 500 bootstrap replications.

962
963 For the academic performance score, the cross-sectional models were performed in the same
964 way described above, with the addition of age at testing in weeks as a covariate ($ks2age_w$ and
965 $ks3age_w$). As there were only two timepoints, a slightly different longitudinal model was used for
966 the linear modeling (Extended Data Figures 2 and 4) as follows:

$$967$$
$$968 (APS_{9,i} - APS_{6,i}) \sim G_i + age_{6,i} + age_{9,i} + PC1_i + \dots + PC10_i + sex_i$$

969
970 where $APS_{6/9,i}$ and $age_{6/9,i}$ are the academic performance scores and ages of individual i at Year
971 6 and 9, respectively. The coefficient estimated for G_i in this regression is equivalent to G 's effect
972 at Year 9 minus that at Year 6 within an individual, i.e. the age interaction effect. To compare the
973 effects for the quantile regression effect size estimates at Years 6 and 9, we conducted z tests
974 between the effect sizes (Extended Data Figure 7A).

975 Marginal and conditional associations between genetic and other factors and 976 IQ

977 To assess the associations between genetic and other factors with IQ (Figure 4), we considered
978 both marginal and conditional models. For marginal models, we conducted the following
979 regressions:

$$980 \\ 981 IQ_{i,t} \sim age_{i,t} + E_i + age_{i,t} * E_i + PC1_i + \dots + PC10_i + sex_i + C_i$$

982
983 where E_i is the given measure of interest. In Figure 4, the coefficient on the E_i term (i.e. the main
984 effect) is shown in the top panel, and the coefficient on the $age_{i,t} * E_i$ term (i.e. the interaction effect)
985 in the bottom panel.

986
987 As maternal and paternal EA are highly correlated, we modified the model for the effects of
988 parental EA as follows:

$$989 \\ 990 IQ_{i,t} \sim age_{i,t} + EA_{i,m} + EA_{i,p} + age_{i,t} * EA_{i,m} + age_{i,t} * EA_{i,p} + PC1_i + \dots + PC10_i + sex_i + C_i$$

991
992 where $EA_{i,m}$ and $EA_{i,p}$ are the maternal and paternal EA respectively. Similarly, we fit the PGL_{EA}
993 values for the child, mother, and father jointly in a trio model.

994
995 To calculate the variance explained by a given variable, we took the square of the standardized
996 effect size of that variable's main effect. To calculate the total variance explained by two
997 uncorrelated variables (e.g. RVB_{pLoF} and $RVB_{Missense}$ that have a correlation of -0.01 , $p=0.16$), we
998 summed the squares of their standardized effect sizes. To test for difference in effect size between
999 the combination of $RVB_{Missense}$ and RVB_{pLoF} versus other factors, we used the square root of the
1000 previous variance explained estimate as the effect size estimate and determined the standard
1001 error for that effect size by summing the square of the standard error for each effect estimate and
1002 then taking the square root of the new estimate. We were then able to use z tests to compare the
1003 effect size estimates as done previously.

1004
1005 For the full joint models, we included all genetic and other measures in a single model, with a
1006 main and age interaction effect for each measure. Since only a subset of probands had
1007 information on gestational age, we fitted the full joint model both with and without the 'weeks born
1008 preterm' variable.

1009 References

- 1010 1. Roberts, B. W., Kuncel, N. R., Shiner, R., Caspi, A. & Goldberg, L. R. The Power of
1011 Personality: The Comparative Validity of Personality Traits, Socioeconomic Status, and
1012 Cognitive Ability for Predicting Important Life Outcomes. *Perspect. Psychol. Sci.* **2**, 313–345
1013 (2007).
- 1014 2. Johnson, W., Corley, J., Starr, J. M. & Deary, I. J. Psychological and physical health at age
1015 70 in the Lothian Birth Cohort 1936: links with early life IQ, SES, and current cognitive function
1016 and neighborhood environment. *Health Psychol.* **30**, 1–11 (2011).
- 1017 3. Strenze, T. Intelligence and socioeconomic success: A meta-analytic review of longitudinal
1018 research. *Intelligence* **35**, 401–426 (2007).
- 1019 4. Schmidt, F. L. & Hunter, J. General mental ability in the world of work: occupational
1020 attainment and job performance. *J. Pers. Soc. Psychol.* **86**, 162–173 (2004).
- 1021 5. Deary, I. J., Whalley, L. J. & Starr, J. M. *A Lifetime of Intelligence: Follow-up Studies of the*
1022 *Scottish Mental Surveys of 1932 and 1947*. (American Psychological Association, 2009).
- 1023 6. Christensen, G. T., Mortensen, E. L., Christensen, K. & Osler, M. Intelligence in young
1024 adulthood and cause-specific mortality in the Danish Conscription Database – A cohort study
1025 of 728,160 men. *Intelligence* **59**, 64–71 (2016).
- 1026 7. Deary, I. J., Cox, S. R. & Hill, W. D. Genetic variation, brain, and intelligence differences. *Mol.*
1027 *Psychiatry* **27**, 335–353 (2022).
- 1028 8. Husby, A., Wohlfahrt, J. & Melbye, M. Gestational age at birth and cognitive outcomes in
1029 adolescence: population based full sibling cohort study. *BMJ* **380**, e072779 (2023).
- 1030 9. Makharia, A. *et al.* Effect of environmental factors on intelligence quotient of children. *Ind.*
1031 *Psychiatry J.* **25**, 189–194 (2016).
- 1032 10. Brynne, M. *et al.* Maternal infection during pregnancy and likelihood of autism and intellectual
1033 disability in children in Sweden: a negative control and sibling comparison cohort study.

- 1034 *Lancet Psychiatry* **9**, 782–791 (2022).
- 1035 11. Plomin, R. & Deary, I. J. Genetics and intelligence differences: five special findings. *Mol.*
1036 *Psychiatry* **20**, 98–108 (2015).
- 1037 12. Savage, J. E. *et al.* Genome-wide association meta-analysis in 269,867 individuals identifies
1038 new genetic and functional links to intelligence. *Nat. Genet.* **50**, 912–919 (2018).
- 1039 13. Howe, L. J. *et al.* Within-sibship genome-wide association analyses decrease bias in
1040 estimates of direct genetic effects. *Nat. Genet.* **54**, 581–592 (2022).
- 1041 14. Kong, A. *et al.* The nature of nurture: Effects of parental genotypes. *Science* **359**, 424–428
1042 (2018).
- 1043 15. Young, A. I. *et al.* Relatedness disequilibrium regression estimates heritability without
1044 environmental bias. *Nat. Genet.* **50**, 1304–1310 (2018).
- 1045 16. Okbay, A. *et al.* Polygenic prediction of educational attainment within and between families
1046 from genome-wide association analyses in 3 million individuals. *Nat. Genet.* **54**, 437–449
1047 (2022).
- 1048 17. Nivard, M. G. *et al.* More than nature and nurture, indirect genetic effects on children’s
1049 academic achievement are consequences of dynastic social processes. *Nat Hum Behav* **8**,
1050 771–778 (2024).
- 1051 18. Wang, B. *et al.* Robust genetic nurture effects on education: A systematic review and meta-
1052 analysis based on 38,654 families across 8 cohorts. *Am. J. Hum. Genet.* **108**, 1780–1791
1053 (2021).
- 1054 19. Demange, P. A. *et al.* Estimating effects of parents’ cognitive and non-cognitive skills on
1055 offspring education using polygenic scores. *Nat. Commun.* **13**, 4801 (2022).
- 1056 20. Young, A. I. *et al.* Mendelian imputation of parental genotypes improves estimates of direct
1057 genetic effects. *Nat. Genet.* **54**, 897–905 (2022).
- 1058 21. Deciphering Developmental Disorders Study. Prevalence and architecture of de novo

- 1059 mutations in developmental disorders. *Nature* **542**, 433–438 (2017).
- 1060 22. Martin, H. C. *et al.* Quantifying the contribution of recessive coding variation to developmental
1061 disorders. *Science* **362**, 1161–1164 (2018).
- 1062 23. Martin, H. C. *et al.* The contribution of X-linked coding variation to severe developmental
1063 disorders. *Nat. Commun.* **12**, 627 (2021).
- 1064 24. Niemi, M. E. K. *et al.* Common genetic variants contribute to risk of rare severe
1065 neurodevelopmental disorders. *Nature* **562**, 268–271 (2018).
- 1066 25. Huang, Q. Q. *et al.* Dissecting the contribution of common variants to risk of rare
1067 neurodevelopmental conditions. *bioRxiv* (2024) doi:10.1101/2024.03.05.24303772.
- 1068 26. Chen, C.-Y. *et al.* The impact of rare protein coding genetic variation on adult cognitive
1069 function. *Nat. Genet.* **55**, 927–938 (2023).
- 1070 27. Gardner, E. J. *et al.* Reduced reproductive success is associated with selective constraint on
1071 human genes. *Nature* **603**, 858–863 (2022).
- 1072 28. Kingdom, R., Beaumont, R. N., Wood, A. R., Weedon, M. N. & Wright, C. F. Genetic modifiers
1073 of rare variants in monogenic developmental disorder loci. *Nat. Genet.* **56**, 861–868 (2024).
- 1074 29. Weiner, D. J. *et al.* Polygenic architecture of rare coding variation across 394,783 exomes.
1075 *Nature* **614**, 492–499 (2023).
- 1076 30. Wright, C. F. *et al.* Evaluating variants classified as pathogenic in ClinVar in the DDD Study.
1077 *Genet. Med.* **23**, 571–575 (2021).
- 1078 31. Wolstencroft, J. *et al.* Neuropsychiatric risk in children with intellectual disability of genetic
1079 origin: IMAGINE, a UK national cohort study. *Lancet Psychiatry* **9**, 715–724 (2022).
- 1080 32. Samocha, K. E. *et al.* Substantial role of rare inherited variation in individuals with
1081 developmental disorders. *bioRxiv* (2024) doi:10.1101/2024.08.28.24312746.
- 1082 33. Wright, C. F. *et al.* Assessing the Pathogenicity, Penetrance, and Expressivity of Putative
1083 Disease-Causing Variants in a Population Setting. *Am. J. Hum. Genet.* **104**, 275–286 (2019).

- 1084 34. Karczewski, K. J. *et al.* The mutational constraint spectrum quantified from variation in
1085 141,456 humans. *Nature* **581**, 434–443 (2020).
- 1086 35. Fraser, A. *et al.* Cohort Profile: the Avon Longitudinal Study of Parents and Children:
1087 ALSPAC mothers cohort. *Int. J. Epidemiol.* **42**, 97–110 (2013).
- 1088 36. Connelly, R. & Platt, L. Cohort profile: UK Millennium Cohort Study (MCS). *Int. J. Epidemiol.*
1089 **43**, 1719–1725 (2014).
- 1090 37. Wechsler, D. Wechsler Adult Intelligence Scale--Third Edition. *Front. Psychol.*
1091 doi:10.1037/t49755-000.
- 1092 38. Niileksela, C. R. & Reynolds, M. R. Enduring the tests of age and time: Wechsler constructs
1093 across versions and revisions. *Intelligence* **77**, 101403 (2019).
- 1094 39. Yang, J. *et al.* Genetic variance estimation with imputed variants finds negligible missing
1095 heritability for human height and body mass index. *Nat. Genet.* **47**, 1114–1120 (2015).
- 1096 40. Trzaskowski, M., Yang, J., Visscher, P. M. & Plomin, R. DNA evidence for strong genetic
1097 stability and increasing heritability of intelligence from age 7 to 12. *Mol. Psychiatry* **19**, 380–
1098 384 (2014).
- 1099 41. Mollon, J. *et al.* Genetic influence on cognitive development between childhood and
1100 adulthood. *Mol. Psychiatry* **26**, 656–665 (2021).
- 1101 42. Demange, P. A. *et al.* Investigating the genetic architecture of noncognitive skills using
1102 GWAS-by-subtraction. *Nat. Genet.* **53**, 35–44 (2021).
- 1103 43. Benjamin, D. J., Cesarini, D., Turley, P. & Young, A. S. Social-Science Genomics: Progress,
1104 Challenges, and Future Directions. (2024) doi:10.3386/w32404.
- 1105 44. Sun, K. Y. *et al.* A deep catalogue of protein-coding variation in 983,578 individuals. *Nature*
1106 (2024) doi:10.1038/s41586-024-07556-0.
- 1107 45. Lee, J. J. *et al.* Gene discovery and polygenic prediction from a genome-wide association
1108 study of educational attainment in 1.1 million individuals. *Nat. Genet.* **50**, 1112–1121 (2018).

- 1109 46. Li, M. *et al.* Integrative functional genomic analysis of human brain development and
1110 neuropsychiatric risks. *Science* **362**, (2018).
- 1111 47. McElroy, E. *et al.* Feasibility of retrospectively harmonising cognitive measures in five British
1112 birth cohort studies. *UK: CLOSER* (2021).
- 1113 48. Odd, D., Evans, D. & Emond, A. M. Prediction of school outcome after preterm birth: a cohort
1114 study. *Arch. Dis. Child.* **104**, 348–353 (2019).
- 1115 49. Alterman, N. *et al.* Gestational age at birth and academic attainment in primary and
1116 secondary school in England: Evidence from a national cohort study. *PLoS One* **17**,
1117 e0271952 (2022).
- 1118 50. Noghanibehambari, H., Salari, M. & Tavassoli, N. Maternal human capital and infants' health
1119 outcomes: Evidence from minimum dropout age policies in the US. *SSM Popul Health* **19**,
1120 101163 (2022).
- 1121 51. Granés, L., Torà-Rocamora, I., Palacio, M., De la Torre, L. & Llupià, A. Maternal educational
1122 level and preterm birth: Exploring inequalities in a hospital-based cohort study. *PLoS One*
1123 **18**, e0283901 (2023).
- 1124 52. Baranowska-Rataj, A., Barclay, K., Costa-Font, J., Myrskylä, M. & Özcan, B. *Preterm Births
1125 and Educational Disadvantage: Heterogeneous Effects Across Families and Schools.*
1126 (CESifo, Center for Economic Studies & Ifo Institute, 2019).
- 1127 53. Malanchini, M. *et al.* Genetic associations between non-cognitive skills and academic
1128 achievement over development. *Nat Hum Behav* (2024) doi:10.1038/s41562-024-01967-9.
- 1129 54. McCall, R. B. Childhood IQ's as Predictors of Adult Educational and Occupational Status.
1130 *Science* **197**, 482–483 (1977).
- 1131 55. Keage, H. A. d. *et al.* Age 7 intelligence and paternal education appear best predictors of
1132 educational attainment: The Port Pirie Cohort Study. *Aust. J. Psychol.* **68**, 61–69 (2016).
- 1133 56. Wang, H. *et al.* Genotype-by-environment interactions inferred from genetic effects on

- 1134 phenotypic variability in the UK Biobank. *Sci Adv* **5**, eaaw3538 (2019).
- 1135 57. Paré, G., Cook, N. R., Ridker, P. M. & Chasman, D. I. On the use of variance per genotype
1136 as a tool to identify quantitative trait interaction effects: a report from the Women's Genome
1137 Health Study. *PLoS Genet.* **6**, e1000981 (2010).
- 1138 58. Cao, Y., Wei, P., Bailey, M., Kauwe, J. S. K. & Maxwell, T. J. A versatile omnibus test for
1139 detecting mean and variance heterogeneity. *Genet. Epidemiol.* **38**, 51–59 (2014).
- 1140 59. Ek, W. E. *et al.* Genetic variants influencing phenotypic variance heterogeneity. *Hum. Mol.*
1141 *Genet.* **27**, 799–810 (2018).
- 1142 60. Wang, C. *et al.* Genome-wide discovery for biomarkers using quantile regression at biobank
1143 scale. *Nat. Commun.* **15**, 6460 (2024).
- 1144 61. Pasmant, E., Vidaud, M., Vidaud, D. & Wolkenstein, P. Neurofibromatosis type 1: from
1145 genotype to phenotype. *J. Med. Genet.* **49**, 483–489 (2012).
- 1146 62. Tye, C. *et al.* Long-term cognitive outcomes in tuberous sclerosis complex. *Dev. Med. Child*
1147 *Neurol.* **62**, 322–329 (2020).
- 1148 63. Bast, J. & Reitsma, P. Analyzing the development of individual differences in terms of
1149 Matthew effects in reading: results from a Dutch Longitudinal study. *Dev. Psychol.* **34**, 1373–
1150 1399 (1998).
- 1151 64. Shaywitz, B. A. *et al.* A Matthew Effect for IQ but Not for Reading: Results from a Longitudinal
1152 Study. *Read. Res. Q.* **30**, 894–906 (1995).
- 1153 65. Stanovich, K. E. Matthew Effects in Reading: Some Consequences of Individual Differences
1154 in the Acquisition of Literacy. *Journal of Education* **189**, 23–55 (2009).
- 1155 66. Duff, D., Tomblin, J. B. & Catts, H. The Influence of Reading on Vocabulary Growth: A Case
1156 for a Matthew Effect. *J. Speech Lang. Hear. Res.* **58**, 853–864 (2015).
- 1157 67. Tucker-Drob, E. M. & Harden, K. P. Early childhood cognitive development and parental
1158 cognitive stimulation: evidence for reciprocal gene-environment transactions. *Dev. Sci.* **15**,

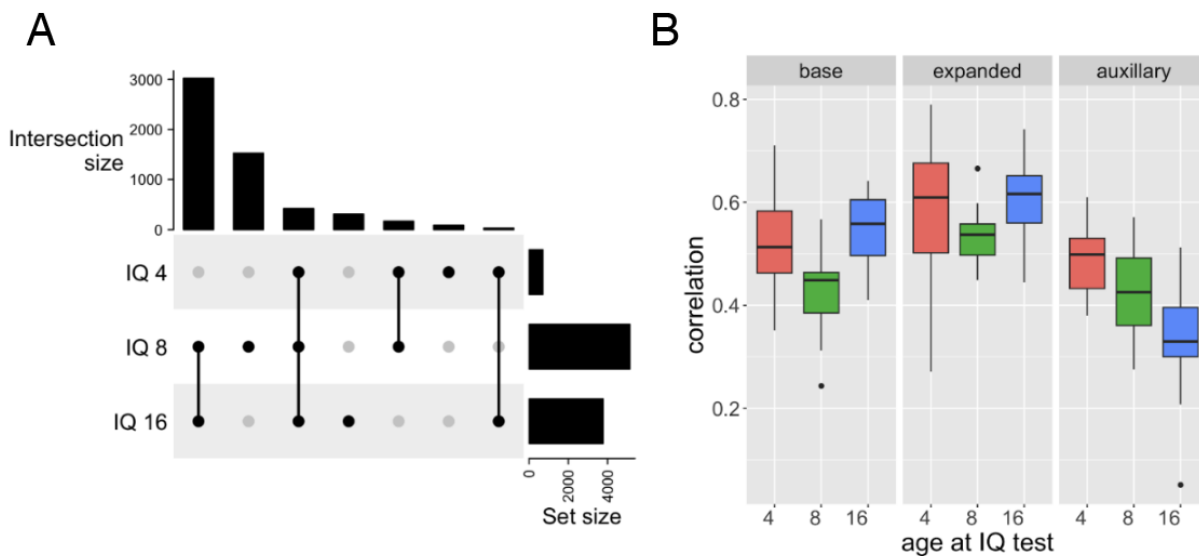
- 1159 250–259 (2012).
- 1160 68. Schuerger, J. M. & Witt, A. C. The temporal stability of individually tested intelligence. *J. Clin.*
1161 *Psychol.* **45**, 294–302 (1989).
- 1162 69. Whitaker, S. Error in the estimation of intellectual ability in the low range using the WISC-IV
1163 and WAIS-III. *Pers. Individ. Dif.* **48**, 517–521 (2010).
- 1164 70. Mostafa, T. & Ploubidis, G. Millennium Cohort Study.
1165 https://discovery.ucl.ac.uk/id/eprint/10060140/1/mcs6_report_on_response.pdf.
- 1166 71. Boyd, A. *et al.* Cohort Profile: the ‘children of the 90s’--the index offspring of the Avon
1167 Longitudinal Study of Parents and Children. *Int. J. Epidemiol.* **42**, 111–127 (2013).
- 1168 72. Bycroft, C. *et al.* The UK Biobank resource with deep phenotyping and genomic data. *Nature*
1169 **562**, 203–209 (2018).
- 1170 73. Backman, J. D. *et al.* Exome sequencing and analysis of 454,787 UK Biobank participants.
1171 *Nature* **599**, 628–634 (2021).
- 1172 74. Davies, G. *et al.* Study of 300,486 individuals identifies 148 independent genetic loci
1173 influencing general cognitive function. *Nat. Commun.* **9**, 2098 (2018).
- 1174 75. Hastie, T., Mazumder, R., Lee, J. D. & Zadeh, R. Matrix Completion and Low-Rank SVD via
1175 Fast Alternating Least Squares. *J. Mach. Learn. Res.* **16**, 3367–3402 (2015).
- 1176 76. Manichaikul, A. *et al.* Robust relationship inference in genome-wide association studies.
1177 *Bioinformatics* **26**, 2867–2873 (2010).
- 1178 77. 1000 Genomes Project Consortium *et al.* A global reference for human genetic variation.
1179 *Nature* **526**, 68–74 (2015).
- 1180 78. Patterson, N., Price, A. L. & Reich, D. Population structure and eigenanalysis. *PLoS Genet.*
1181 **2**, e190 (2006).
- 1182 79. Price, A. L. *et al.* Long-range LD can confound genome scans in admixed populations. *Am.*
1183 *J. Hum. Genet.* **83**, 132–5; author reply 135–9 (2008).

- 1184 80. Taliun, D. *et al.* Sequencing of 53,831 diverse genomes from the NHLBI TOPMed Program.
1185 *Nature* **590**, 290–299 (2021).
- 1186 81. Das, S. *et al.* Next-generation genotype imputation service and methods. *Nat. Genet.* **48**,
1187 1284–1287 (2016).
- 1188 82. McCarthy, S. *et al.* A reference panel of 64,976 haplotypes for genotype imputation. *Nat.*
1189 *Genet.* **48**, 1279–1283 (2016).
- 1190 83. Fitzsimons, E. *et al.* Collection of genetic data at scale for a nationally representative
1191 population: the UK Millennium Cohort Study. *Longit. Life Course Stud.* **13**, 169–187 (2021).
- 1192 84. Privé, F., Arbel, J. & Vilhjálmsson, B. J. LDpred2: better, faster, stronger. *Bioinformatics* **36**,
1193 5424–5431 (2021).
- 1194 85. Vilhjálmsson, B. J. *et al.* Modeling Linkage Disequilibrium Increases Accuracy of Polygenic
1195 Risk Scores. *Am. J. Hum. Genet.* **97**, 576–592 (2015).
- 1196 86. Privé, F., Albiñana, C., Arbel, J., Pasaniuc, B. & Vilhjálmsson, B. J. Inferring disease
1197 architecture and predictive ability with LDpred2-auto. *Am. J. Hum. Genet.* **110**, 2042–2055
1198 (2023).
- 1199 87. Bulik-Sullivan, B. *et al.* An atlas of genetic correlations across human diseases and traits.
1200 *Nat. Genet.* **47**, 1236–1241 (2015).
- 1201 88. Bulik-Sullivan, B. K. *et al.* LD Score regression distinguishes confounding from polygenicity
1202 in genome-wide association studies. *Nat. Genet.* **47**, 291–295 (2015).
- 1203 89. Koko, M. *et al.* Exome sequencing of UK birth cohorts. *Wellcome Open Research* (2024).
- 1204 90. Danecek, P. *et al.* Twelve years of SAMtools and BCFtools. *Gigascience* **10**, (2021).
- 1205 91. Kersey, P. J. *et al.* Ensembl Genomes 2016: more genomes, more complexity. *Nucleic Acids*
1206 *Res.* **44**, D574–80 (2016).
- 1207 92. Rentzsch, P., Schubach, M., Shendure, J. & Kircher, M. CADD-Splice-improving genome-
1208 wide variant effect prediction using deep learning-derived splice scores. *Genome Med.* **13**,

- 1209 31 (2021).
- 1210 93. Samocha, K. E. *et al.* Regional missense constraint improves variant deleteriousness
1211 prediction. *bioRxiv* 148353 (2017) doi:10.1101/148353.
- 1212 94. Cheng, J. *et al.* Accurate proteome-wide missense variant effect prediction with
1213 AlphaMissense. *Science* **381**, eadg7492 (2023).
- 1214 95. Plewis, I. Millennium cohort study first survey: Technical report on sampling (3rd. Edition).
1215 (2004).
- 1216 96. Bates, D., Mächler, M., Bolker, B. & Walker, S. Fitting Linear Mixed-Effects Models using
1217 lme4. *arXiv [stat.CO]* (2014).
- 1218 97. Wan, C. & Zhong, W. Estimation and Inference for Multi-Kink Quantile Regression [R
1219 package MultiKink version 0.1.0]. (2020).
- 1220 98. Koenker, R. & Bache, S. H. rqpdp: Regression quantiles for panel data. *R package version 0.*
1221 *6/r10* (2014).
- 1222 99. DDG2P (Version 3.79). <https://panelapp.genomicsengland.co.uk/panels/484/>.
- 1223 100. Pardiñas, A. F. *et al.* Common schizophrenia alleles are enriched in mutation-intolerant
1224 genes and in regions under strong background selection. *Nat. Genet.* **50**, 381–389 (2018).
- 1225

1226 Extended Data Figures

1227 Extended Data Figure 1



1228
1229 Assessing quality of IQ imputation across ages and sets of variables in ALSPAC. A) Upset plot indicating
1230 number of individuals with a given set of measured IQ values. B) Correlations between masked measured
1231 and imputed values for 100 random individuals for 100 trials for three different combinations of variables
1232 (base, expanded and auxiliary variables, as described in Methods) used in the SoftImpute imputation for
1233 IQ measured at age 4, 8, and 16.

1234

1235

1236

1237

1238

1239

1240

1241

1242

1243

1244

1245

1246

1247

1248

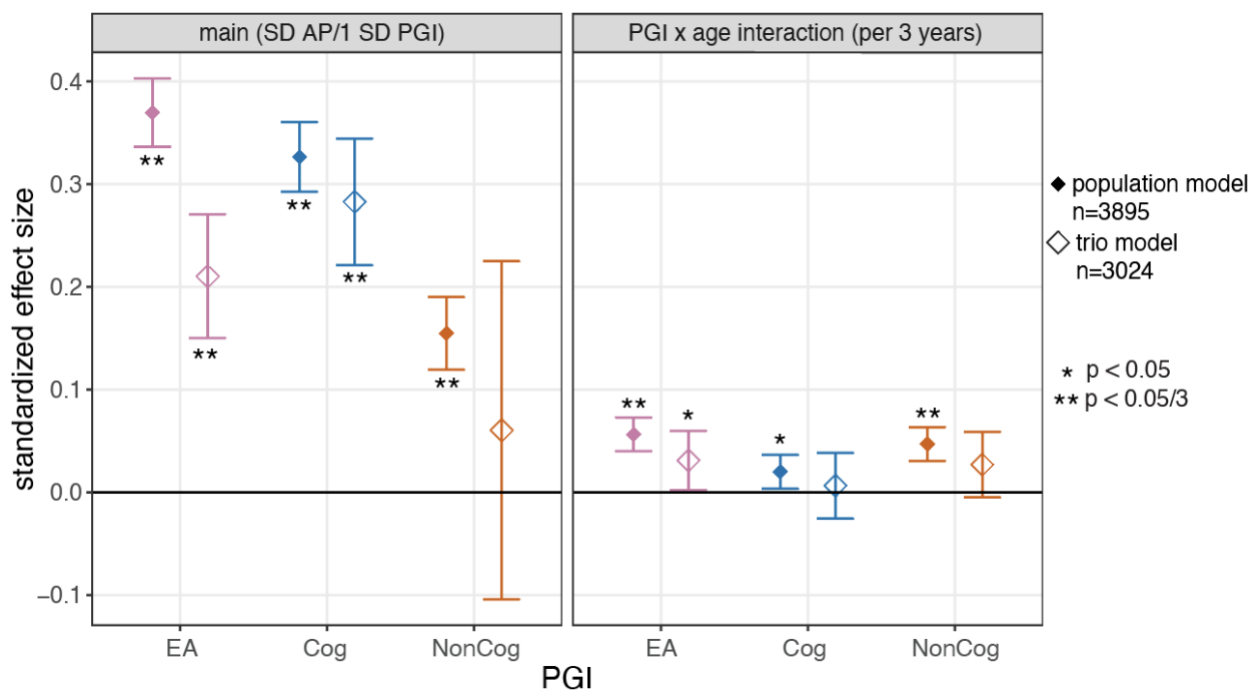
1249

1250

1251

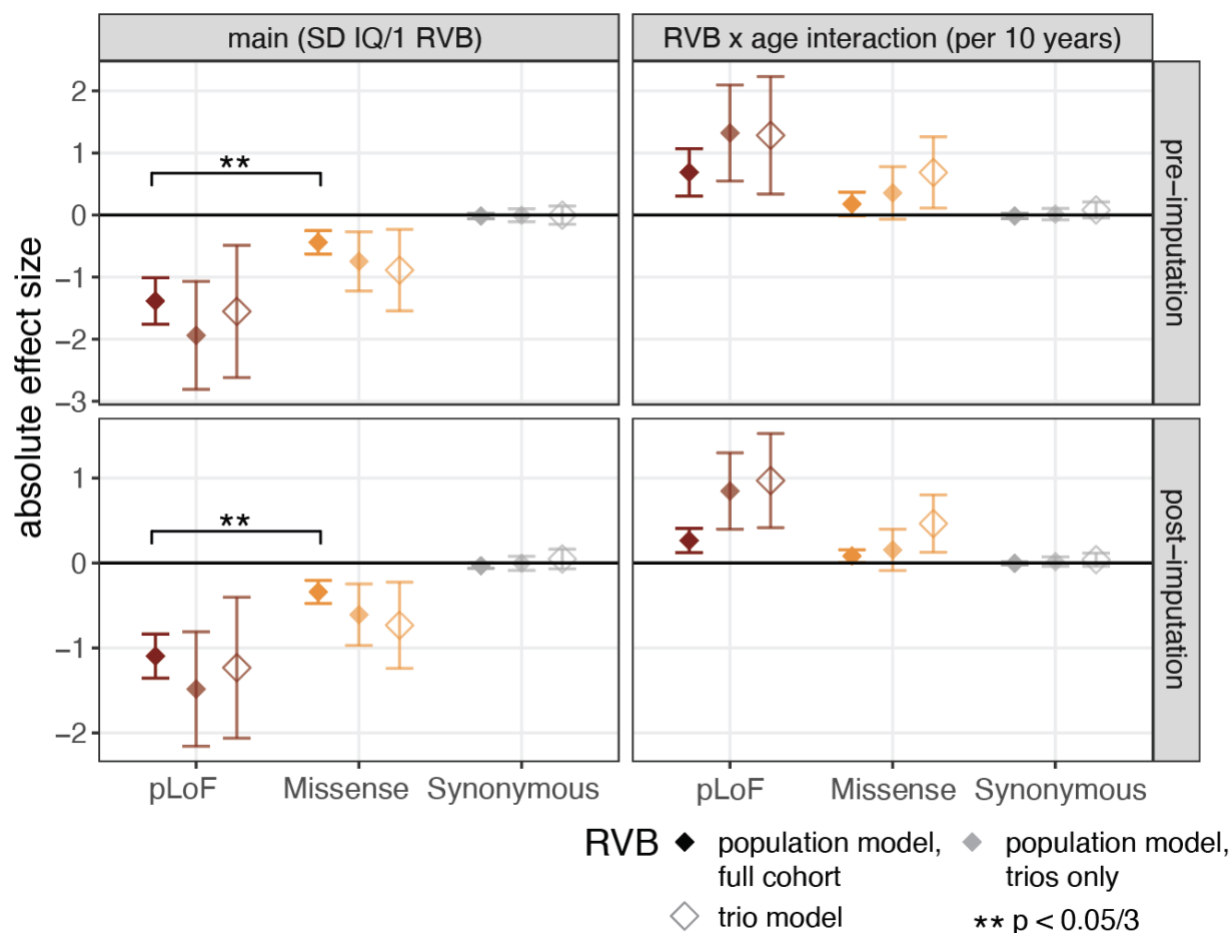
1252

1253 Extended Data Figure 2



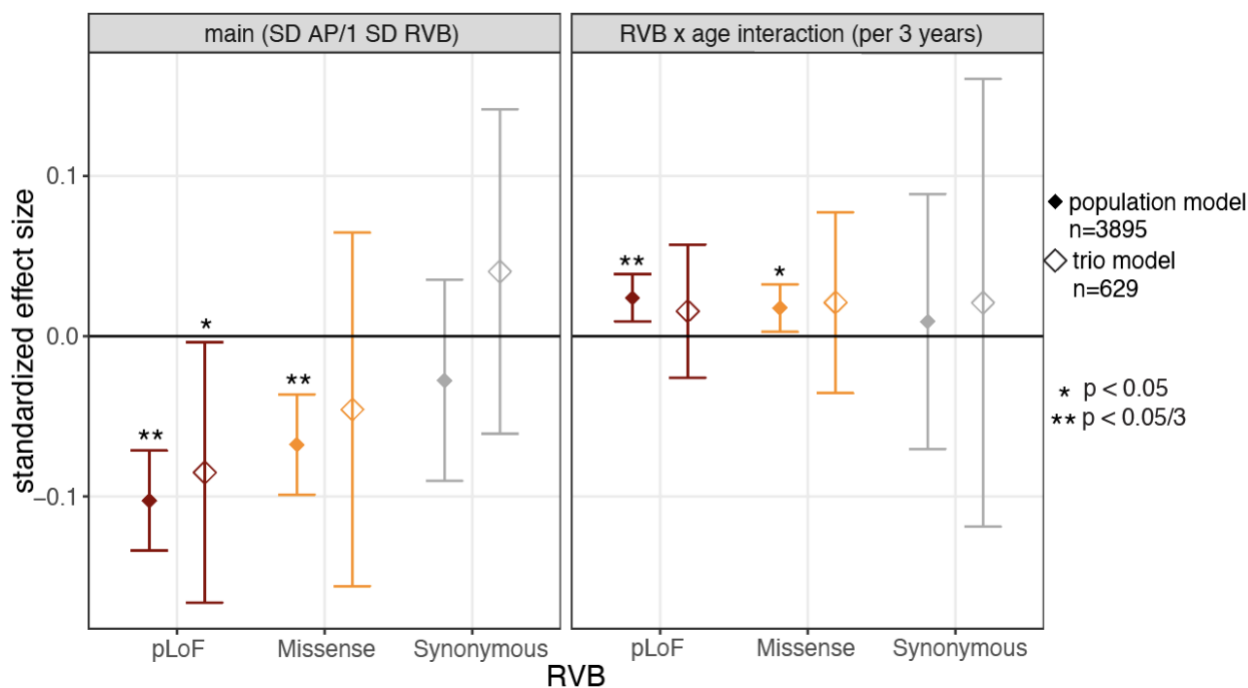
1254 Association between PGIs and academic performance in ALSPAC. The points show the effect at age 11
1255 (main effect, left panel) and the difference in effects between age 14 and 11 (PGI x age interaction, right
1256 panel) and error bars show 95% confidence intervals. Results are shown for the children's PGIs not
1257 controlling (i.e. 'population model') and controlling (right) for parental PGIs. Population effect sizes are
1258 shown estimated in the full sample.
1259
1260
1261

1262 Extended Data Figure 3



1263
 1264 Association between unstandardized rare variant burden (RVB) and IQ across ages in ALSPAC, estimated
 1265 with a mixed-effects linear model. (i.e. as for Figure 2 but with unstandardized rather than standardized
 1266 RVB scores.) Absolute effects and 95% confidence intervals estimated for the main effects and RVB-by-
 1267 age-interaction effects for RVB calculated with three different consequence classes (pLoF, missense or
 1268 synonymous), either pre- (top) and post-imputation (bottom). Results for the children's RVBs not controlling
 1269 (i.e. 'population model') and controlling (right) for parental RVBs (i.e. trio model). Population effect sizes
 1270 are shown estimated in the full sample (opaque) and in the subset of children with parental RVBs
 1271 (translucent). The square brackets indicate significant comparisons highlighted in the text (z tests).
 1272
 1273

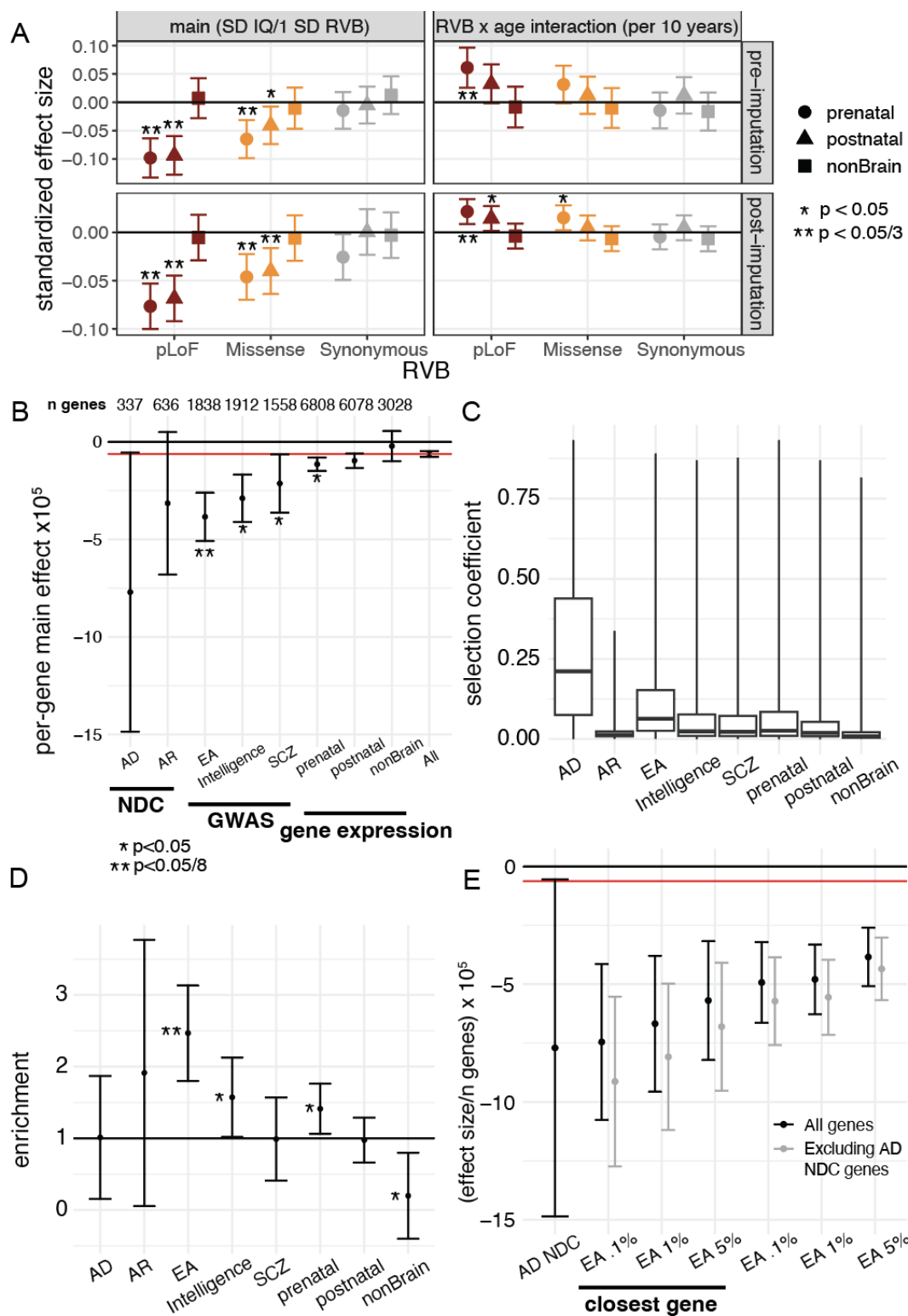
1274 Extended Data Figure 4



1275 Association between RVBs and academic performance in ALSPAC. The points show the effect at age 11
 1276 (main effect, left panel) and the difference in effects between age 14 and 11 (RVB x age interaction, right
 1277 panel) and error bars show 95% confidence intervals. Results are shown for the children's RVB not
 1278 controlling (i.e. 'population model') and controlling (right) for parental RVB. Population effect sizes are
 1279 shown estimated in the full sample.
 1280

1281
 1282
 1283
 1284
 1285
 1286
 1287
 1288
 1289
 1290
 1291
 1292
 1293
 1294
 1295
 1296
 1297
 1298
 1299
 1300

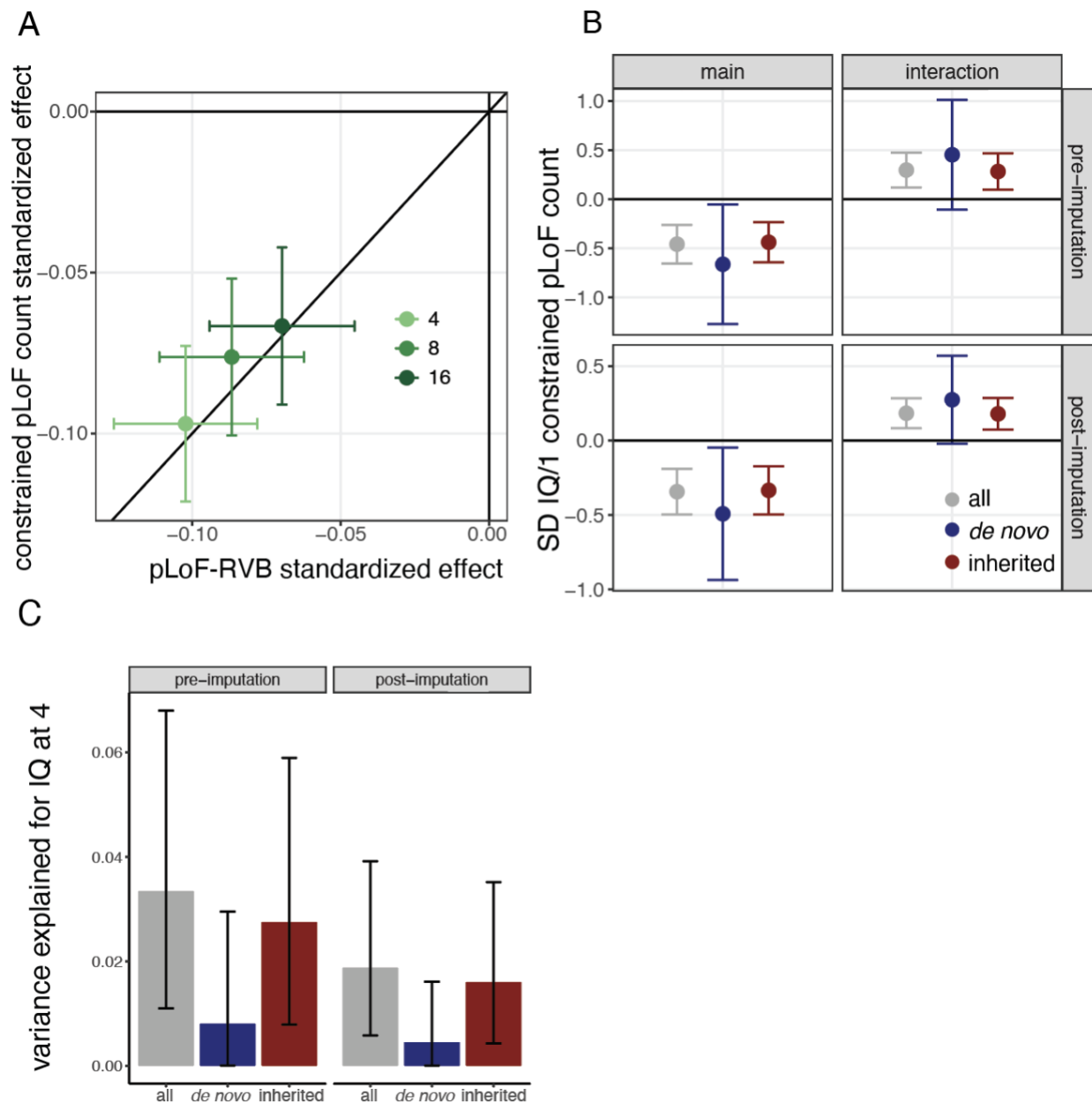
1301 Extended Data Figure 5



1302 Associations and enrichment of gene set-specific RVB across development. A) Standardized effects and
 1303 95% confidence intervals estimated for main effects and RVB-by-age-interaction effects for each RVB in
 1304 three mutually exclusive gene sets from Li et al⁴⁶. These comprise genes in co-expressed clusters that are
 1305

1306 more highly expressed in prenatal or postnatal brain or that are not detected in the study (non-brain). B)
1307 Main effects of RVB_{pLoF} on IQ (post-imputation) stratified by gene set, divided by the number of genes in
1308 the given gene set, with 95% confidence intervals. Red horizontal line indicates the average effect for
1309 RVB_{pLoF} across all genes. Asterisks indicate the p value for difference in per-gene effects between a given
1310 gene set and all genes using a z test, with * indication nominal significance and ** indicating bonferroni
1311 significance for 8 tests. C) Boxplots of the distribution of s_{het} (selection coefficient against heterozygous
1312 pLoFs in that gene⁴⁴) per gene set, where a coefficient of 0 indicates no selection against heterozygous
1313 pLoFs in a given gene and 1 indicates a 100% reduction in fitness for heterozygous pLoF carriers relative
1314 to non-carriers. D) Ratio of the main effect for RVB_{pLoF} for the indicated gene set relative to randomly
1315 sampled gene sets with matching underlying s_{het} distributions (enrichment). E) As in (B) for gene sets
1316 defined using different FDR threshold cutoffs based on gene prioritization in ⁴⁵ (5%, 1%, 0.1%) and by
1317 restricting to prioritized genes at a given cutoff that are also the closest genes to the prioritizing SNP in the
1318 Lee et al. GWAS. Results are shown before (black) or after (grey) excluding overlapping genes from the
1319 set of autosomal dominant neurodevelopmental condition genes with a loss-of-function mechanism from
1320 DDG2P (AD NDC). AD/AR NDC: Autosomal dominant/recessive neurodevelopmental disorder genes with
1321 loss-of-function mechanism from DDG2P⁹⁹, EA: educational attainment GWAS prioritized genes by Lee et
1322 al.⁴⁵ at 5% FDR threshold, Intelligence: intelligence GWAS prioritized genes from Savage et al.¹², SCZ:
1323 schizophrenia GWAS prioritized genes from Pardiñas et al.¹⁰⁰

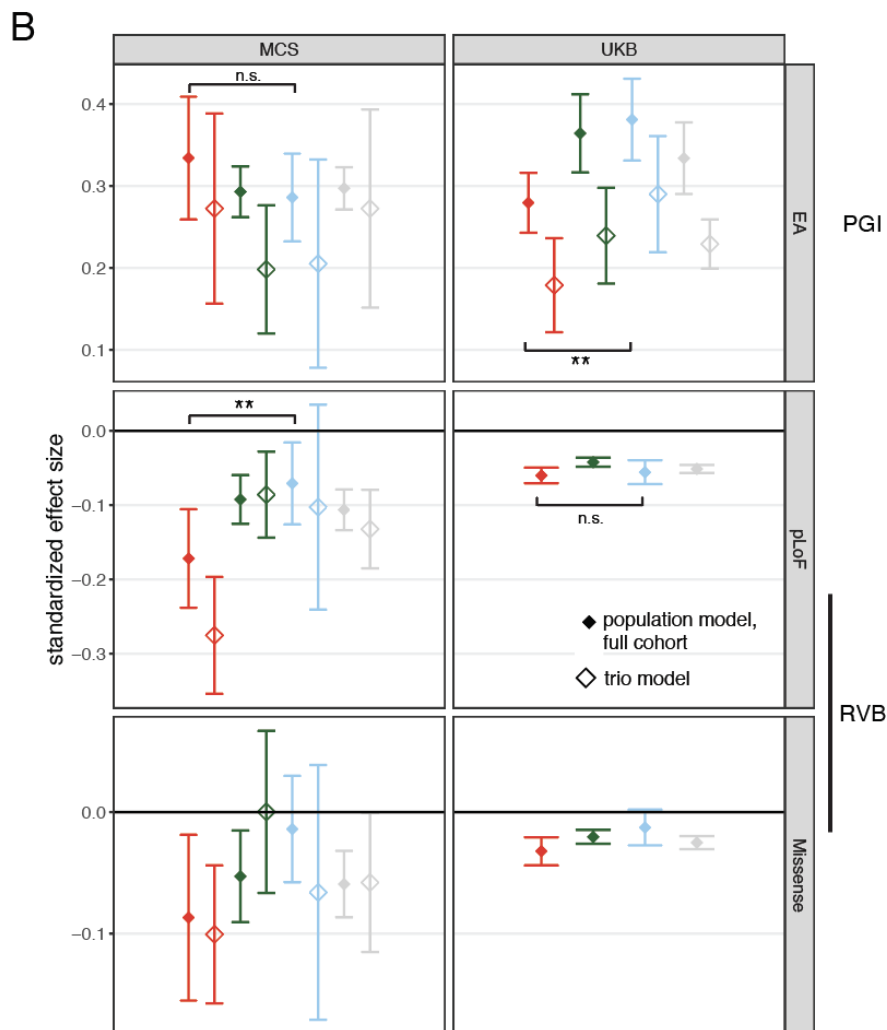
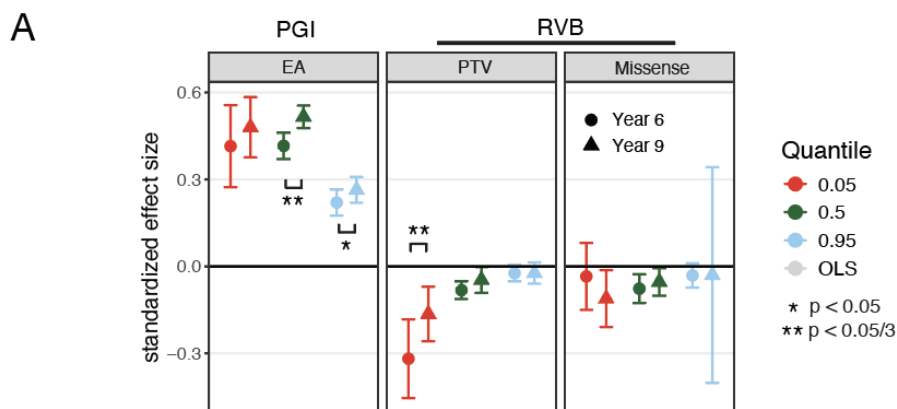
1324 Extended Data Figure 6



1325 Association between inherited and *de novo* pLoF variant counts in constrained genes and IQ in ALSPAC.
 1326 A) Standardized effects and 95% confidence intervals of RVB_{pLoF} and constrained pLoF count (see
 1327 **Supplementary Methods**) on IQ across ages post-imputation. Black line indicates the y=x line. B)
 1328 Standardized effects for the main and RVB-by-age interaction effect from a longitudinal mixed-effects model
 1329 of constrained pLoF counts on standardized IQ when considering all variants or *de novo* mutations and
 1330 inherited variants separately, both pre- and post-imputation. C) Variance explained by constrained pLoF
 1331 counts on standardized IQ when considering all variants or *de novo* and inherited separately, both pre- and
 1332 post-imputation. See Figure S1 for results from a similar analysis of cognitive performance in MCS.
 1333
 1334
 1335

1336 Extended Data Figure 7

1337



1338

1339

1340

1341

Influence of genetic measures on the tails of the phenotypic distribution using academic performance in ALSPAC and cognitive performance measures in MCS and UK Biobank. A) Standardized effects and 95% confidence intervals for quantile regression of the 5th (red), 50th (green), and 95th (blue) percentiles of

1342 genetic measures on academic performance in Year 6 and Year 9 in the full ALSPAC cohort showing
1343 population effects. The square brackets with asterisks indicate significant age interactions. B) Standardized
1344 effects and 95% confidence intervals for quantile regression of the 5th (red), 50th (green), and 95th (blue)
1345 percentiles and linear regression (OLS; gray) estimated from cross-sectional associations with cognitive
1346 performance measures in MCS and UK Biobank. The PGI_{EA} used in UK Biobank was constructed from an
1347 EA GWAS in 23andMe only¹⁶, as the GWAS excluding 23andMe includes UK Biobank. We only considered
1348 PGI_{EA} as we could not construct PGI_{Cog} to apply in UK Biobank since we did not have an independent
1349 GWAS for cognitive ability in adults that excluded this cohort. The square brackets indicate significant
1350 comparisons highlighted in the text (z tests).

1351

1352

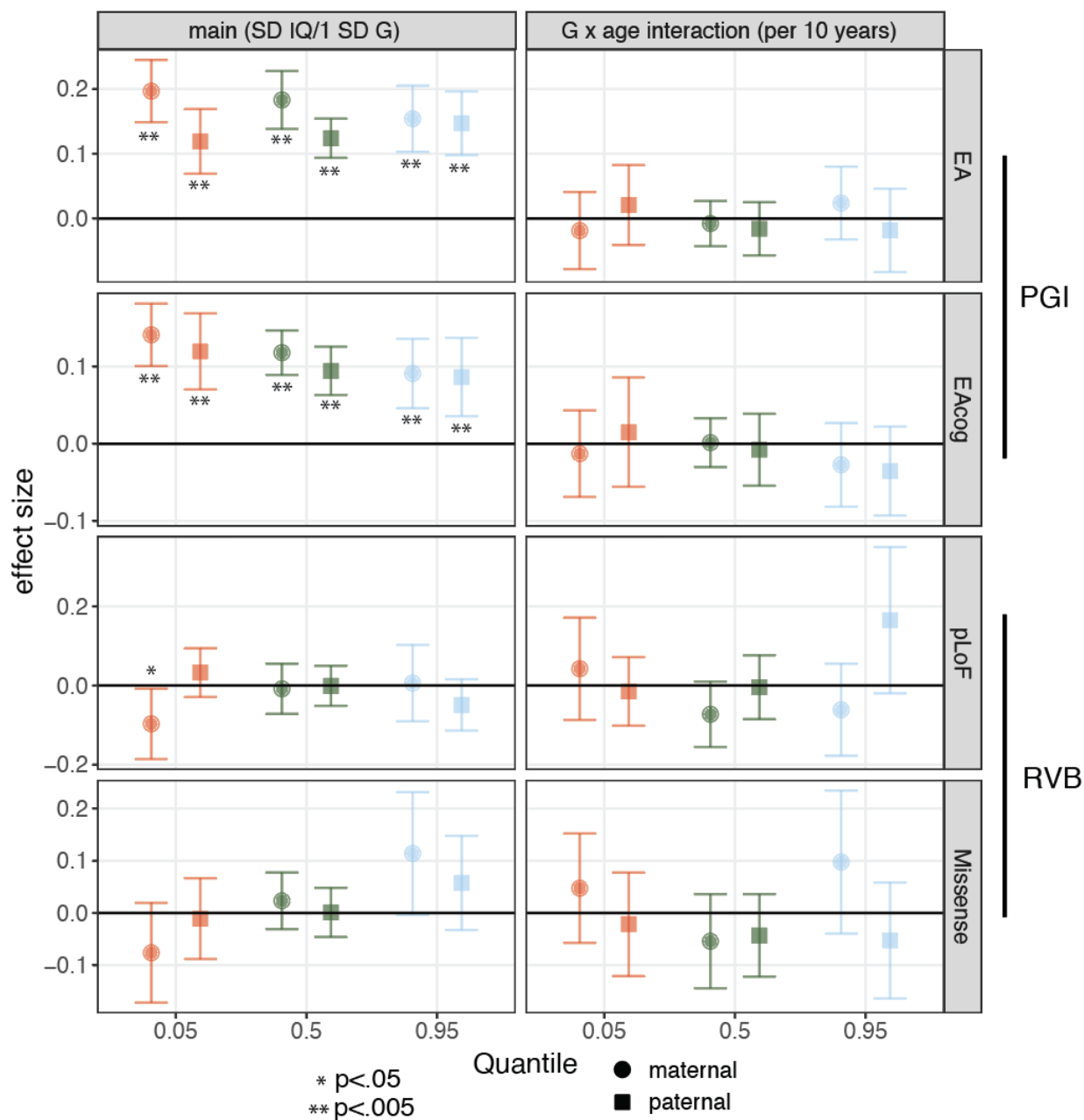
1353

1354

1355

1356

1357 Extended Data Figure 8



1358

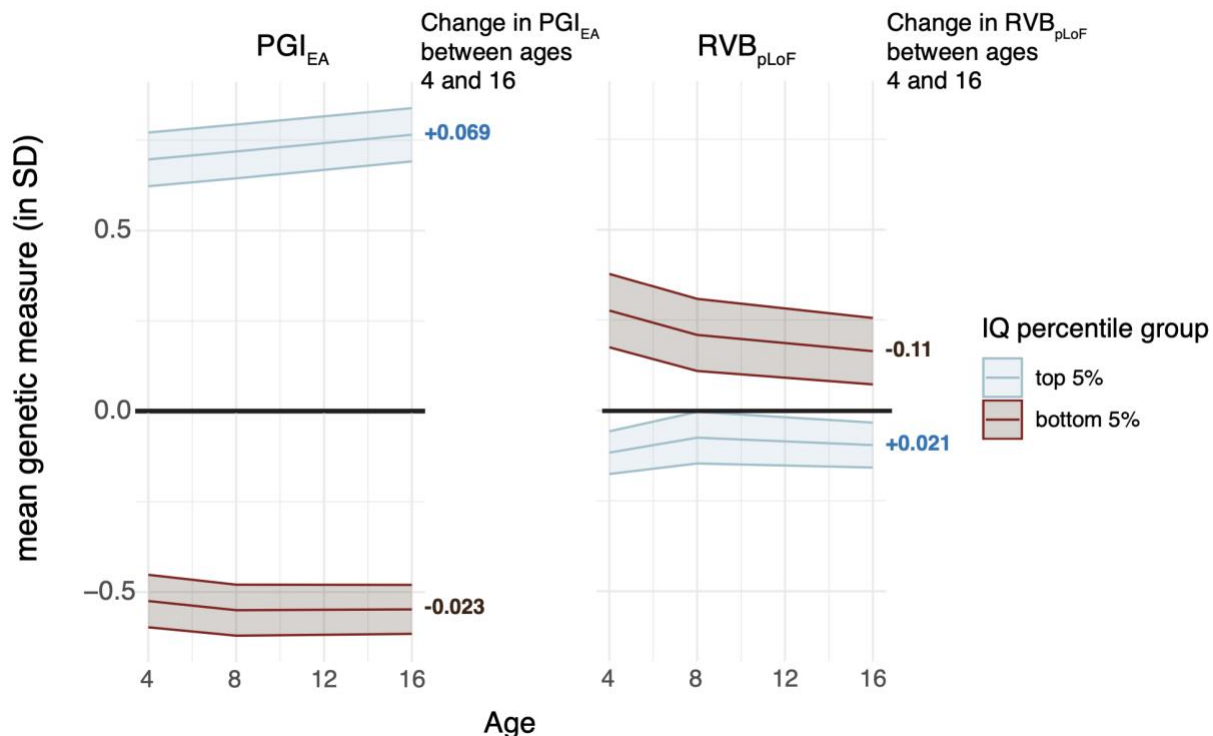
1359 Influence of parental common and rare variants on different quantiles of the IQ distribution post-imputation.
 1360 Standardized effects and 95% confidence intervals for quantile regression of the 5th, 50th and 95th
 1361 percentiles estimated from mixed-effects modeling with post-imputation IQ at ages 4, 8, and 16 for parental
 1362 PGI_{EA}, PGI_{EAcog}, RVB_{pLoF} and RVB_{Missense} estimated in a trio model.

1363

1364

1365

1366 Extended Data Figure 9



1367
1368 Summary of genetic trajectories across development, as inferred in this work. Mean PGI_{EA} (left) and RVB_{pLoF}
1369 (right) for individuals in the top (light blue) or bottom (brown) 5% percentile of IQ at a given age (inferred
1370 post-imputation of IQ). Note that the individuals in the top and bottom 5th percentile groups vary across
1371 development. Children at the top 5th percentile of IQ at age 16 have a higher mean PGI_{EA} than those at the
1372 top of the distribution at age 4, while those at the bottom 5th percentile have a relatively steady mean PGI_{EA}.
1373 In contrast, the quantile-specific age interactions for RVB_{pLoF} suggest that children in the bottom 5th
1374 percentile of IQ at age 4 have a much higher burden of damaging rare variants than those at age 16, while
1375 those at the top 5th percentile have a stable and low rare variant burden.
1376

1377 Supplementary Figures

1378 Supplementary Tables 1-9

1379 Supplementary Notes

1380 Supplementary note 1: IQ imputation in ALSPAC

1381 Supplementary note 2: Differential effects of rare variants in different gene sets on IQ

1382 Supplementary note 3: Relative contributions of deleterious pLoF *de novo* and inherited variants
1383 to IQ

1384 Supplementary note 4: Results of quantile regressions pre- versus post-imputation of IQ