

1 **A high-fiber, low-fat diet improves the symptoms and metabolic profile of patients with**  
2 **Crohn's disease**

3

4 **Short title:** The *Mi*-IBD diet for Crohn's disease patients

5

6 **Authors**

7 Maria T. Abreu, MD<sup>1\*</sup>; Maria A. Quintero, MPH<sup>1</sup>; Luis Garces, RDN<sup>1</sup>; Hajar Hazime, MS<sup>1</sup>; Rose  
8 Killian, MPH<sup>2</sup>; Katerina M. Faust, PhD<sup>1</sup>; Payton Mendygral, BS<sup>1</sup>; Judith Pignac-Kobinger, MS<sup>1</sup>;  
9 Cristiana Mangarelli, MS<sup>1</sup>; Ana M. Santander, BS<sup>1</sup>; Irina Fernández, MS<sup>1</sup>; Norma Solis, APRN<sup>1</sup>;  
10 Mailenys Ortega, APRN<sup>1</sup>; Oriana M. Damas, MD<sup>1</sup>; Siobhan Proksell, MD<sup>1</sup>; David H. Kerman, MD<sup>1</sup>;  
11 Amar R. Deshpande, MD<sup>1</sup>; Jennifer Seminerio, MD<sup>4</sup>; Jana A.L. Hashash, MD<sup>5</sup>; Philip Harvey,  
12 PhD<sup>1,3</sup>; Ingrid Barrera, PsyD<sup>1,3,6</sup>; Tracy Crane, PhD<sup>7</sup>

13

14 **Author Affiliations**

15 <sup>1</sup> Department of Medicine, University of Miami–Leonard Miller School of Medicine, Miami, Florida,  
16 USA.

17 <sup>2</sup> John P. Hussman Institute for Human Genomics, University of Miami, Miami, Florida, USA.

18 <sup>3</sup> Department of Psychiatry and Behavioral Sciences, University of Miami–Leonard Miller School  
19 of Medicine, Miami, Florida, USA.

20 <sup>4</sup> Division of Gastroenterology and Nutrition, University of South Florida, Tampa, Florida, USA.

21 <sup>5</sup> Division of Gastroenterology and Hepatology, Mayo Clinic, Jacksonville, Florida, USA.

22 <sup>6</sup> Department of Microbiology and Immunology, University of Miami–Leonard Miller School of  
23 Medicine, Miami, Florida, USA.

24 <sup>7</sup> Division of Oncology, Department of Medicine, University of Miami–Leonard Miller School of  
25 Medicine, Miami, Florida, USA.

## *The Mi-IBD diet for Crohn's disease patients*

26 \*Corresponding author

27

### 28 **Grant Support**

29 This research was supported by a grant from The Leona M. and Harry B. Helmsley Charitable  
30 Trust to MTA.

31

### 32 **Abbreviations**

33 ARFID (avoidant/restrictive food intake disorder), ASA24 (Automated Self-Administered 24-hour  
34 Dietary Assessment Tool), BMI (body mass index), CD (Crohn's disease), CRP (C-reactive  
35 protein), HBI (Harvey-Bradshaw index), HEI (healthy eating index), HHC (healthy household  
36 control), HIPAA (Health Insurance Portability and Accountability Act), IBD (inflammatory bowel  
37 disease), JAK (Janus kinase), MAFLD (metabolic dysfunction-associated fatty liver disease),  
38 PRO2 (Patient-Reported Outcomes-2), PROMIS-29 (Patient-Reported Outcomes Measurement  
39 Information System-29), QoL (quality of life), SAA (serum amyloid A), sCDAI (Short Crohn's  
40 Disease Activity Index), SFA (saturated fatty acid), SCFA (short-chain fatty acid), TLR4 (Toll-like  
41 receptor 4), TNF $\alpha$  (tumor necrosis factor alpha), UC (ulcerative colitis), VTE (venous  
42 thromboembolism)

43

### 44 **Correspondence:**

45 Maria T. Abreu, M.D.

46 Address: 1011 NW 15th Street (D-149), Gautier Bldg., Suite 510, University of Miami Miller School  
47 of Medicine, Miami, Florida 33101, USA

48 Email: [mabreu1@med.miami.edu](mailto:mabreu1@med.miami.edu).

49

### 50 **Disclosures**

### *The Mi-IBD diet for Crohn's disease patients*

51 MTA has received research funding from The Leona M. and Harry B. Helmsley Charitable Trust  
52 and the Crohn's and Colitis Foundation. She has served as a consultant for or is on the advisory  
53 board of the following companies: AbbVie Inc., Amgen, Bristol Myers Squibb, Celsius  
54 Therapeutics, Eli Lilly and Company, Gilead Sciences, Janssen Pharmaceuticals, Matera Prima,  
55 and Pfizer Pharmaceutical. MTA has served as a teacher, lecturer, or speaker for the following  
56 companies: Janssen Pharmaceuticals and Takeda Pharmaceuticals. All other authors declare  
57 that they have no conflicts of interest.

58

### **CRedit Authorship Contributions**

59 Maria T. Abreu (Conceptualization: Lead; Funding acquisition: Lead; Methodology: Lead;  
60 Resources: Lead; Supervision: Lead; Validation: Lead; Writing – review & editing: Lead)

61 Maria A. Quintero (Conceptualization: Equal; Data curation: Supporting; Project administration:  
62 Lead; Acquired patient data and samples: Lead)

63 Luis Garces (Data curation: Supporting; Acquired patient data and samples: Lead)

64 Hajar Hazime (Investigation: Equal)

65 Rose Killian (Formal analysis: Lead)

66 Katerina M. Faust (Visualization: Lead; Writing – original draft: Lead; Writing – review & editing:  
67 Contributing)

68 Payton Mendygral (Formal analysis: Supporting)

69 Judith Pignac-Kobinger (Conceptualization: Supporting)

70 Cristiana Mangarelli (Acquired patient data and sample: Supporting)

71 Ana M. Santander (Investigation: Equal)

72 Irina Fernández (Investigation: Equal)

73 Norma Solis (Resources: Supporting; Acquired patient data and samples: Supporting)

74 Mailenys Ortega (Resources: Supporting; Acquired patient data and samples: Supporting)

75 Oriana M. Damas (Resources: Supporting; Acquired patient data and samples: Supporting)

*The Mi-IBD diet for Crohn's disease patients*

- 77 Siobhan Proksell (Resources: Supporting; Acquired patient data and samples: Supporting)
- 78 David H. Kerman (Resources: Supporting; Acquired patient data and samples: Supporting)
- 79 Amar R. Deshpande (Resources: Supporting; Acquired patient data and samples: Supporting)
- 80 Jennifer Seminerio (Resources: Supporting; Acquired patient data and samples: Supporting)
- 81 Jana A.L. Hashash (Methodology: Supporting)
- 82 Philip Harvey (Methodology: Supporting)
- 83 Ingrid Barrera (Methodology: Supporting)
- 84 Tracy Crane (Methodology: Supporting)
- 85
- 86 **Data Transparency Statement**
- 87 Individual participant data will not be shared to preserve patient privacy.

## *The Mi-IBD diet for Crohn's disease patients*

### 88 **ABSTRACT**

89 **Background:** Crohn's disease (CD) is characterized by intestinal inflammation. Diet is a risk  
90 factor for inflammatory bowel diseases such as CD and represents a promising adjunctive  
91 treatment, yet there are few well-controlled dietary intervention studies in CD patients. Fiber may  
92 have beneficial effects; however, most CD patients are told to avoid high-fiber foods. We  
93 conducted a longitudinal patient-preference study to examine the effect of a catered low-fat, high-  
94 fiber diet (the *Mi-IBD* diet) on CD symptoms, inflammation, and the microbiome.

95 **Methods:** CD patients (n=73) received one-time diet counseling (Group 1, n=23), the *Mi-IBD* diet  
96 (Group 2, n=26), or the *Mi-IBD* diet along with a healthy household control (Group 3, n=24 patient-  
97 HHC dyads). The *Mi-IBD* diet was catered for 8 weeks, and CD symptoms were recorded. Serum  
98 samples were collected to measure inflammatory marker levels and evaluate systemic changes  
99 via proteomic analyses (SomaScan Discovery v4.1 assays). Stool samples were collected to  
100 perform metabolomic analyses.

101 **Results:** At baseline, CD patients had a low-fiber, high-fat diet. One-time diet counseling did not  
102 result in dietary changes. In contrast, catering led to marked dietary changes in CD patients  
103 (increased fiber intake, decreased fat intake; all ps < 0.001) and high adherence rates (96%).  
104 Group 3 exhibited improvements in CD symptoms (PRO2 and sCDAI scores). Proteomic analysis  
105 revealed higher baseline serum levels of proinflammatory proteins (SAA and CRP) in CD patients  
106 than in HHCs; these levels decreased with the catered diet. The diet also improved fecal  
107 metabolites related to protein and energy metabolism as well as markers of oxidative stress and  
108 inflammation in CD patients.

109 **Conclusion:** A nonpharmacological approach involving a high-fiber, low-fat diet to manage CD  
110 was well tolerated, even by patients with fibrostenotic CD. These findings fill a gap in development  
111 of dietary recommendations for CD patients.

112

113 **Clinical trial registration:** This trial was registered at ClinicalTrials.gov (ID: NCT04213729).

*The Mi-IBD diet for Crohn's disease patients*

114

115 **Keywords:** Crohn's disease, dietary intervention, proteomics, metabolomics

## *The Mi-IBD diet for Crohn's disease patients*

### 116 **INTRODUCTION**

117 Crohn's disease (CD) is an inflammatory bowel disease (IBD) that affects the small  
118 intestine and colon. Advances in pharmacological therapy have occurred, but medical treatment  
119 does not restore normal intestinal function or result in endoscopic, histologic, or transmural  
120 healing in many patients<sup>1</sup>. Currently, non-pharmacological, evidence-based approaches for  
121 disease management (such as dietary interventions) are lacking. Although many epidemiological  
122 studies have linked diet to the development of CD, the certainty of evidence regarding the  
123 beneficial influence of specific diets in IBD is low<sup>2</sup>.

124 Several diets have been developed as non-pharmacological treatments for IBD, including  
125 Exclusive Enteral Nutrition (EEN), the Crohn's Disease Exclusion Diet (CDED), the Mediterranean  
126 Diet (MD), the Specific Carbohydrate Diet (SCD), and the low-FODMAP diet<sup>3,4</sup>. Notably, among  
127 these diets, only CDED involves minimizing the consumption of animal fat; in the other diets, fat  
128 content is not regulated (e.g., SCD)<sup>5</sup> or highly variable (e.g., EEN formulas can vary in fat content  
129 from 0% to 52.5%)<sup>6</sup>. These diets have been demonstrated to alleviate IBD symptoms and reduce  
130 inflammatory markers<sup>3,4</sup>. However, as mentioned above, the certainty of evidence is poor; thus,  
131 further well-controlled intervention studies are needed. Additionally, the adherence of CD patients  
132 to these diets is only moderate overall. Dietary adherence rates range from as low as 30% (EEN<sup>7</sup>)  
133 as high as 88% (low-FODMAP; at 4 weeks<sup>8</sup>). Thus, developing techniques to improve dietary  
134 adherence in CD patients is key for achieving better outcomes. One such approach is catering  
135 and delivering meals directly to participants; this technique was found to increase rates of  
136 adherence to the SCD or the MD by approximately 20%<sup>9</sup>. Additionally, family- or friend-based  
137 dietary interventions have reported greater weight loss among overweight individuals with greater  
138 dyadic support<sup>10</sup>. Thus, providing catered food for the entire household may improve CD patient  
139 adherence rates.

140 In a previous diet study of ulcerative colitis (UC) patients with quiescent disease, we  
141 discovered that patients typically consumed a diet that was high in fat and very low in fruits and

### *The Mi-IBD diet for Crohn's disease patients*

142 vegetables<sup>11</sup>. Little is known about the effects of diet interventions focusing on fat and fiber intake  
143 on the management of CD. High fat intake may increase risk of disease activity in CD patients<sup>12</sup>,  
144 and saturated fatty acids (SFAs) act as non-microbial Toll-like receptor 4 (TLR4) agonists,  
145 triggering inflammation<sup>13</sup>. In general, increased fiber intake is associated with salutary effects, in  
146 part through its effects on the microbiome; fiber leads to the generation of short-chain fatty acids  
147 (SCFAs), which may have anti-inflammatory effects<sup>14</sup>. However, most patients with CD are told  
148 to eat a low-fiber diet due to concern that fiber may cause intestinal obstruction or worsen  
149 symptoms of diarrhea, especially in patients with a history of fibrostenotic disease<sup>15</sup>.

150 Diet also influences the functional microbiome, altering the bacterial metabolites produced  
151 in the gut. IBD patients consistently exhibit altered fecal metabolomic profiles from those of  
152 healthy controls, with depleted fatty acid levels<sup>16</sup>. In healthy individuals, changes in diet  
153 (consumption of an isocaloric MD) were demonstrated to alter the metabolome, enhancing  
154 microbial carbohydrate metabolism and reducing bile acid production<sup>17</sup>. Thus, it is reasonable to  
155 expect that a diet intervention may improve microbiome function in IBD patients, potentially  
156 rescuing some of the alterations observed in IBD.

157 In the present study, our primary hypothesis was that CD patients adhering to a high-fiber,  
158 low-fat diet (the *Mi-IBD* diet) would exhibit decreased symptoms and inflammation compared to  
159 those receiving diet counseling only. Our secondary hypothesis was that catering the dietary  
160 intervention would improve both dietary adherence (i.e., decreased fat intake and increased fiber  
161 intake) and our ability to rigorously examine the microbiome and metabolome, increasing  
162 experimental control. We further predicted that the *Mi-IBD* diet would improve microbiome  
163 function, shifting the CD patient metabolomic profile toward that of healthy individuals. The study  
164 design was novel in that we used a patient-preference approach and included only CD patients  
165 living with an adult with whom they shared meals. Patients chose to receive one-time diet  
166 counseling or catered meals (20% of total calories from fat and 14 g of fiber/1,000 calories per  
167 day) for eight weeks. Our results demonstrated that a low-fat, high-fiber diet is well tolerated in



## *The Mi-IBD diet for Crohn's disease patients*

168 CD patients, leading to improvements in CD symptoms. The inclusion of a household control  
169 group gave us further power to understand how a reasonably simple diet affected microbiome  
170 function as measured by metabolomics as well as systemic proteomic markers. Our results  
171 demonstrate improvements in the CD patients in systemic inflammatory markers and improved  
172 fecal metabolites related to protein and energy metabolism, oxidative stress, and inflammation.

173

## 174 **MATERIALS & METHODS**

### 175 **Study design**

176 This patient-preference study had a prospective, longitudinal design (**Supplementary**  
177 **Figure 1**). Participants were recruited by physicians during routine visits or by telemedicine  
178 through the University of Miami. Participants from other states were also recruited through  
179 [clinicaltrials.gov](https://clinicaltrials.gov) (ID: NCT04213729). Recruitment and study completion occurred between  
180 January 7, 2020, and July 10, 2023 (see the Supplementary Materials for further details). The  
181 study was approved by the University of Miami Institutional Review Board (protocol 20190548).  
182 All study participants provided written informed consent either online or on a paper form before  
183 participating in the study. All authors had access to the study data and reviewed and approved  
184 the final manuscript.

185

### 186 **Patient enrollment and group allocation**

187 Patients diagnosed with mild to moderate CD were eligible for inclusion if they lived with  
188 another adult with whom they generally shared meals (see the Supplementary Materials for all  
189 inclusion and exclusion criteria). Patients chose one of three groups: Group 1 (n=23) received a  
190 one-time diet counseling session, Group 2 (n=26) received catered food (the *Mi-IBD* diet) for an  
191 eight-week period, and Group 3 received catered food along with healthy household controls  
192 (HHCs) who were free of gastrointestinal disease (n=23 dyads). These HHCs were included as

### *The Mi-IBD diet for Crohn's disease patients*

193 an important control for the effect of the same diet (the Mi-IBD diet) on a healthy individual  
194 compared to a CD patient while maintaining a similar environment (the shared household).

#### 195 **Demographic and clinical characteristics**

196 Information on age, gender, race, ethnicity, birth country, marital status, and  
197 anthropometric measurements was collected from participants at baseline. Additional clinical  
198 characteristics were assessed in CD patients: disease location, Montreal classification, current  
199 medication use, previous medication use, and history of gastrointestinal surgery.

200

#### 201 **Characteristics of the *Mi-IBD* diet**

202 The *Mi-IBD* diet consisted of 20% of total calories from fat, an omega-6/omega-3 fatty acid  
203 ratio of approximately 1:1, and 14 g of fiber per 1,000 calories consumed. The catered meals  
204 included breakfast, lunch, dinner, and snacks and were catered by national catering companies  
205 that used organic, minimally processed, high-quality ingredients (see the Supplementary  
206 Materials).

207

#### 208 **Assessments of diet intake and CD symptoms**

209 Participants completed the Automated Self-Administered 24-hour Dietary Assessment  
210 Tool (ASA24)<sup>18</sup> at baseline and week 8 (Supplementary Figure 1). This self-report tool is used to  
211 assess micronutrients and macronutrients consumed based on participant recall of foods  
212 consumed over the past 24 hours. From the ASA24 data, the healthy eating index (HEI) scores  
213 were calculated. The HEI is used to measure diet quality relative to the United States Department  
214 of Agriculture (USDA) recommendations in the *Dietary Guidelines for Americans*<sup>19</sup> and evaluates  
215 13 dietary components, including total fruits, total vegetables, whole grains, refined grains, and  
216 fatty acids. Higher scores reflect higher dietary quality.

### *The Mi-IBD diet for Crohn's disease patients*

217 Three validated instruments were administered each month to assess CD disease activity:  
218 the Patient-Reported Outcomes-2 (PRO2), Short Crohn's Disease Activity Index (sCDAI), and  
219 Harvey-Bradshaw Index (HBI).

220

#### **221 Measurement of inflammatory markers**

222 Serum samples and morning stool samples at baseline and week 8 were collected to  
223 measure C-reactive protein (CRP), serum amyloid A (SAA), and calprotectin. CRP levels were  
224 measured using a Human CRP/Reactive Protein ELISA PicoKine Kit (Catalog #EK1316; Boster  
225 Biological, Pleasanton, CA). SAA determination was performed using a Human Serum Amyloid  
226 A DuoSet ELISA Kit (Catalog #DY3019-05; R&D Systems, Minneapolis, MN). Fecal calprotectin  
227 was measured with a BUHLMANN fCAL ELISA Kit (Catalog #EK-CAL2; BUHLMANN  
228 Laboratories, Amherst, NH). Calprotectin was extracted with a CALEX Cap Device (Catalog #B-  
229 CALEX-C200; BUHLMANN Laboratories).

230

#### **231 Serum proteomics analysis to assess systemic markers**

232 Proteomic analysis of serum samples was performed by SomaLogic (Boulder, CO) using  
233 the SomaScan Discovery v4.1 assay, which can detect 5,000 human protein analytes.  
234 Specifically, serum samples from 10 dyads (CD patient from Group 3 + HHC) and 10 CD patients  
235 from Group 1 were analyzed at baseline and week 8. These participants were randomly selected  
236 from among the participants with blood samples available for both baseline and week 8.

237

#### **238 Untargeted metabolomic analysis of stool samples**

239 Stool samples were sent to the Targeted Metabolomics and Proteomics Laboratory at the  
240 University of Alabama at Birmingham for untargeted metabolomics via liquid chromatography–  
241 mass spectrometry (LC-MS)/MS global analysis. Data were normalized (total ion current) and  
242 subjected to Pareto scaling prior to univariate and multivariate statistical analysis, hierarchal

## *The Mi-IBD diet for Crohn's disease patients*

243 heatmap clustering, and pathway analysis using MetaboAnalyst version 5  
244 (<http://www.metaboanalyst.ca>).

245

### 246 **Outcome measures**

247 The outcome measures were improvements in clinical symptoms in patients consuming  
248 an Mi-Diet. The secondary outcome measure was a change in stool metabolomic profile of CD  
249 patients towards that of healthy subjects.

250

### 251 **Statistical analysis**

252 Group differences were detected using ANOVAs. Bartlett's test of homogeneity of  
253 variance was performed to detect differences in variance among groups; if the standard ANOVA  
254 assumption of equal variance was violated, Welch's ANOVA was utilized. Post hoc t-tests with  
255 Bonferroni correction were conducted if a significant difference was identified. Additionally, paired  
256 t-tests were used to detect changes from baseline within groups. Analyses were performed and  
257 figures were generated with GraphPad Prism version 10.1.2 (GraphPad Software, Boston, MA).  
258 The threshold for statistical significance was set at  $p \leq 0.05$ . HEI components and dietary  
259 macronutrients other than fat and fiber intake are reported without adjustment for multiple  
260 comparisons in the **Supplementary Materials**.

261

## 262 **RESULTS**

### 263 **Demographic and clinical characteristics of participants**

264 Overall, 115 participants were enrolled in the study, and 73 CD patients and 24 HHCs  
265 completed all study requirements (see **Figure 1**). The CD patients consisted of equal numbers of  
266 men (47.9%) and women (52.1%). The average age of CD patients was  $36.8 \pm 12.4$  years, and  
267 the average disease duration was  $11.1 \pm 9.9$  years. Approximately half of the patients (55.2%)  
268 self-identified as Hispanic/Latino. Most CD patients were in clinical remission according to their

### *The Mi-IBD diet for Crohn's disease patients*

269 mean HBI score (HBI score:  $3 \pm 2.9$ )<sup>20</sup>. There were no significant differences in HBI, PRO2, or  
270 sCDAI scores among the groups at baseline. The levels of inflammatory markers (fecal  
271 calprotectin, CRP, and SAA) were low, consistent with quiescent CD. One third of patients  
272 (32.4%) had fibrostenotic disease; patients with obstructive symptoms were not enrolled (see  
273 **Supplementary Figure 2**). Further details regarding the included participants are shown in **Table**  
274 **1**.

275

### **The baseline diet of CD patients is low in fiber and high in fat**

277 The United States Department of Agriculture (USDA) recommends consuming a diet with  
278 14 g of fiber per 1,000 calories per day<sup>21</sup> and less than 10% of calories from saturated fat<sup>22</sup>.  
279 Baseline dietary consumption was assessed with the ASA24, and these data were used to derive  
280 HEI scores. At baseline, the ASA24 results indicated that CD patients consumed approximately  
281 10 g of fiber per 1,000 calories, 36.8% of calories from fat, and >10% of calories from saturated  
282 fat. All three CD patient groups had similar baseline levels of macronutrient intake (protein, total  
283 fat, saturated fat, dietary cholesterol, fiber, sugar, and the ratio of omega 6 to omega 3 fatty acids)  
284 and similar HEI scores (**Supplementary Table 1**). The average HEI total score of the general US  
285 population is 55.3<sup>23</sup>; our CD patients had average values ranging from 49.8 to 53.3. By definition,  
286 the ideal HEI total score is 100, reflecting complete alignment with dietary recommendations.  
287 These data demonstrate that CD patients with quiescent disease consume a diet that is not  
288 consistent with the current USDA nutritional guidelines<sup>24</sup>.

289

### **Catering meals achieves the nutritional goals of the Mi-Diet in CD patients and household controls whereas one-time diet counseling does not**

292 We assessed dietary adherence during the study period (eight weeks) by examining data  
293 logged in a daily food diary (Nutrihand). All groups provided with catered meals (Group 2, Group  
294 3, and the HHC group) consumed approximately 80% of the provided food. Almost all patients

### *The Mi-IBD diet for Crohn's disease patients*

295 (96%) also reported that they *always* or *usually* ate the catered food (see **Supplementary**  
296 **Materials** for further details). Further details regarding the intake of specific nutrients in each  
297 group at baseline and week 8 are shown in **Supplementary Figure 3**.

298 We further examined macronutrient intake according to the ASA24 to determine whether  
299 participants receiving the catered *Mi-IBD* diet achieved the dietary intake targets (**Figure 2**). One-  
300 time diet counseling did not result in dietary changes. In contrast, catering led to significant  
301 decreases in total fat intake and the percentage of calories derived from saturated fat as well as  
302 significant increases in fiber intake and protein intake (all  $ps < 0.001$ ). Thus, our intervention  
303 achieved our primary aim of improving dietary adherence, leading to reduced fat intake and  
304 increased fiber intake.

305 Participants who received the catered food met the target threshold of consuming 14 g of  
306 fiber per 1,000 calories at week 8, while those who did not receive the catered food did not meet  
307 this threshold. Although the percentage of calories derived from fat at week 8 in the groups that  
308 received the catered food remained above the target (<20% of calories from fat), these values  
309 were substantially improved from the baseline values and from those of Group 1. The percentages  
310 of calories from saturated fat significantly decreased in the groups that received the catered  
311 meals, matching the USDA nutritional guidelines threshold (of 10% or less<sup>22</sup>); no such decrease  
312 was observed in Group 1.

313 Finally, we examined dietary quality among the groups in terms of changes in HEI scores  
314 from baseline to week 8 (**Supplementary Figure 5**). Group 1 did not exhibit any improvements  
315 in HEI scores over time. In contrast, overall dietary quality (HEI total scores) improved from  
316 baseline to week 8 in Group 2, Group 3, and the HHC group. Specifically, the catered meals led  
317 to significantly increased consumption of total vegetables, greens and beans, total fruit, whole  
318 fruit, and whole grains and significantly decreased consumption of refined grains and saturated  
319 fat.

320

## *The Mi-IBD diet for Crohn's disease patients*

### 321 **The *Mi*-IBD diet improved CD symptoms**

322 We next investigated whether consumption of the *Mi*-IBD diet led to improvements in the  
323 symptoms of CD patients. Specifically, we compared HBI, PRO2, and sCDAI scores between  
324 baseline and week 8 (**Figure 3; Supplementary Table 2**). Groups 1 and 2 did not exhibit any  
325 significant changes in HBI, PRO2, or sCDAI scores. In contrast, Group 3 exhibited improvements  
326 in both PRO2 and sCDAI scores from baseline to week 8. In other words, receiving the catered  
327 food along with a family member led to improvements in CD symptoms.

328 Importantly, consumption of the *Mi*-IBD diet did not lead to an increase in abdominal pain  
329 (PRO2 scores) or CD symptom severity (HBI scores). We also examined the subset of CD  
330 patients with fibrostenotic disease; these patients are typically advised to avoid fiber intake.  
331 Patients with a fibrostenotic phenotype present in all groups exhibited no changes in HBI, PRO2,  
332 or sCDAI scores from baseline to week 8 (all  $p$ s > 0.11). Thus, the *Mi*-IBD diet, which is high in  
333 fiber, did not lead to increased CD symptoms among patients with fibrostenotic disease.

334

### 335 **The *Mi*-IBD diet differentially impacted serum protein levels and pathway activity in CD** 336 **patients and HHCs**

337 CD patients enrolled in this study generally had mild symptoms or were in symptomatic  
338 remission with low levels of inflammatory markers at baseline. Inflammatory marker levels in stool  
339 and serum samples were assessed at baseline and week 8 (**Supplementary Table 3**). CRP  
340 levels did not exhibit significant changes from baseline to week 8 in any group (all  $p$ s > 0.24).  
341 Similarly, fecal calprotectin levels did not exhibit significant changes from baseline to week 8 in  
342 any group (all  $p$ s > 0.15); however, there was a nonsignificant trend toward a difference in Group  
343 2 ( $t(24) = -1.87$ ,  $p = 0.07$ ). SAA levels did not significantly change from baseline to week 8 in any  
344 group (all  $p$ s > 0.1). Overall, these data suggest that the *Mi*-IBD diet did not worsen inflammation.

345 After assessing established inflammatory markers, we wanted to have an agnostic view  
346 of the differences in systemic effects of the diet in patients with CD versus household controls.

### *The Mi-IBD diet for Crohn's disease patients*

347 We thus focused on the Group 3 CD patient-HHC dyads, allowing us to compare changes in CD  
348 patients with those in matched HHCs. For these analyses, we performed SomaLogic proteomics  
349 in ten randomly selected dyads.

350 At baseline, CD patients had higher levels of pro-inflammatory proteins (SAA1 and CRP),  
351 immunomodulatory proteins (CLEC12A) and IgA) than HHCs (**Figure 4A**). Consumption of the  
352 Mi-IBD diet reduced levels of leptin (a protein derived from adipocytes<sup>25</sup>) and C1QBP (a protein  
353 that impairs goblet cell formation in IBD patients<sup>26</sup> and plays a proinflammatory role<sup>27</sup>) in CD  
354 patients (**Figure 4B**). In contrast, the *Mi*-IBD diet increased levels of proteins important for  
355 maintenance of the intestinal epithelium (RAB21 and RAB74)<sup>28</sup>.

356 We compared protein levels in HHCs and CD patients before and after the diet.  
357 Consumption of the *Mi*-IBD diet by CD patients reduced levels of inflammatory and  
358 immunomodulatory markers, approaching those of HHCs (**Figure 4C**). However, these diet-  
359 induced changes were unable to completely eliminate the differences between CD patients and  
360 HHCs; inflammatory and immunomodulatory markers remained higher in CD patients.

361 Finally, we conducted pathway analysis within CD patients. Consumption of the *Mi*-IBD  
362 diet significantly upregulated protein expression in pathways associated with amino acid  
363 metabolism, fatty acid metabolism, endothelial cell development, and cellular responses to DNA  
364 damage (**Figure 4D**). Together, these changes in serum protein levels may reflect systemic diet-  
365 induced improvements in inflammation and metabolism in CD patients.

366

### **Consuming the Mi-IBD diet changed the fecal metabolome of CD patients**

368 To gain insight into the impact of diet modification on microbiome function, we analyzed  
369 the fecal metabolome of our patients before (week 0) and after (week 8) consuming the catered  
370 diet. Metabolomic analysis at week 8 revealed a marked separation in the metabolome of groups  
371 that received the catered diet (Group 2, Group 3, and the HHC group) compared to the group that  
372 did not receive catered food (Group 1) (**Figure 5A**). Examination of specific fecal metabolites



### *The Mi-IBD diet for Crohn's disease patients*

373 revealed that CD patients who received the catered diet (Groups 2 and 3) show significant  
374 metabolomic improvements compared to patients who did not receive the diet (Group 1),  
375 underscoring the Mi-IBD diet's role in enhancing metabolomic health (**Figure 5B**). The Mi-IBD  
376 diet improved fecal metabolites related to protein and energy metabolism as well as markers of  
377 oxidative stress and inflammation in Groups 2 and 3; these markers remained unchanged in  
378 Group 1. Notably, although both Group 2 and Group 3 received the catered diet and showed  
379 improvements, Group 3 displayed more pronounced changes, possibly due to the shared  
380 household environment with HHCs consuming the same diet.

381         Next, we leveraged our data to examine whether the impact of the Mi-IBD diet varied  
382 between CD patients and HHCs living in the same household. We found that HHCs showed more  
383 stable metabolomic profiles than CD patients (Group 3), who exhibited more variable responses.  
384 This highlights the diet's differential impacts in healthy vs. disease states. Both groups showed  
385 improvements in metabolites related to energy metabolism, but Group 3 exhibited more significant  
386 reductions in oxidative stress markers than the HHCs, suggesting that patients had a stronger  
387 reduction in inflammation in response to the dietary intervention.

388

389

## 390 **DISCUSSION**

391         Patients with IBD often want to receive dietary counseling, with 80-89% of CD patients  
392 asking their physicians for dietary advice<sup>29</sup>. However, it remains unclear which diets are beneficial  
393 for IBD, leading to confusion and reduced food-related QoL in patients. As a result, many patients  
394 with IBD develop avoidant/restrictive food intake disorder (ARFID)-like conditions and have an  
395 overly restrictive diet<sup>30</sup>. At the same time, patients who receive dietary counseling are rarely  
396 completely adherent to this advice, with low levels of dietary adherence reported by previous  
397 studies. In this study, we attempted to answer two important questions: 1) Does catering a low-

### *The Mi-IBD diet for Crohn's disease patients*

398 fat, high-fiber diet improve dietary adherence? 2) Does this diet improve CD symptoms,  
399 inflammation, and microbiome function?

400 To our knowledge, this is the first patient-preference study of diet to be completed in  
401 patients with CD. We believe that patient self-selection into groups is a necessary aspect of this  
402 study because the design involved the participation of household members (Group 3 CD patient-  
403 HHC dyads); thus, we could not simply randomly assign CD patients to groups without  
404 considering the willingness of household members to participate in this study. Importantly, the  
405 groups were well matched for baseline characteristics relevant to the study, such as baseline diet,  
406 disease activity, and QoL scores. Moreover, we view the patient-preference approach as a  
407 strength of our design, as it enabled us to achieve high adherence rates (and thereby excellent  
408 experimental control of diet). Another strength of our study was enrollment of a diverse patient  
409 population: almost half of our CD patients were Latino. Therefore, our results can be extrapolated  
410 to other cultures.

411 Our findings shed light on the importance of catering to achieve high adherence rates in  
412 dietary interventions. We included a group that received one-time diet counseling, a group that  
413 received catered food for themselves only, and a group that received catered food along with a  
414 household member. Notably, while patients who received the catered food had very high  
415 adherence rates (96%), catering food for a patient and their household member did not lead to  
416 further improvements in adherence (i.e., no differences in adherence between Groups 2 and 3),  
417 possibly because of a ceiling effect. This aligns with previous findings in healthy people that both  
418 individual and household-based interventions successfully reduced fat intake and that there were  
419 no significant differences in the reduction in fat intake between the two intervention types<sup>31</sup>.  
420 Overall, CD patients want to receive dietary advice, but we very clearly showed that they do not  
421 adhere to this information once provided. Unfortunately, one-time counseling sessions are the  
422 most common type of guidance provided by dietitians to CD patients. Dietitians who want to

### *The Mi-IBD diet for Crohn's disease patients*

423 achieve sustained change should consider directing patients to catering companies that can  
424 provide food in line with physician recommendations.

425 In terms of the specific diet that we evaluated, we demonstrated that the *Mi-IBD* diet was  
426 well tolerated in patients with CD, including those with a fibrostenotic phenotype. Many patients  
427 with the fibrostenotic phenotype are counseled not to eat fiber<sup>32</sup>. Additionally, most CD patients  
428 at any given time are in remission<sup>33</sup> but still avoid consuming fruits and vegetables<sup>34</sup> due to their  
429 fiber content. However, when receiving a catered diet including high fiber intake, patients in Group  
430 3 reported improvements in abdominal pain, bowel movements, and overall sCDAI scores. The  
431 sources of fiber in the *Mi-IBD* diet were whole grains, fruits, vegetables, legumes, and nuts and  
432 seeds. Patients reported enjoying the meals, particularly the ability to eat fruits and vegetables  
433 again; indeed, on the *Mi-IBD* diet, their fruit consumption nearly doubled.

434 We did not see overall biochemical improvements (e.g., in CRP or fecal calprotectin  
435 levels). This lack of change was likely due to the inclusion of patients who were on stable  
436 medications and doing well at the time of recruitment. Using the aptamer-based SomaLogic  
437 SomaScan Discovery v4.1 assay, we observed that CD patients, despite being in clinical  
438 remission, had elevated systemic markers of inflammation. These systemic inflammatory markers  
439 improved with the *Mi-IBD* diet intervention. We believe that our diet strategy (which we previously  
440 tested in UC patients<sup>11</sup>) can be added to the list of diets recommended for IBD patients, including  
441 EEN, CDED, MD, and SCD.

442 In addition to the direct impact of diet on CD symptoms, improved dietary quality is  
443 associated with broad health benefits, extending beyond IBD. First, there is growing recognition  
444 of shared features of metabolic syndrome and IBD<sup>35</sup>, with metabolic dysfunction-associated fatty  
445 liver disease (MAFLD) observed in 42% of IBD patients<sup>36</sup>. Second, higher visceral adiposity is  
446 associated with a decreased response to monoclonal antibody biologic therapies in IBD<sup>37</sup>. Thus,  
447 reduced fat intake (such as consuming the *Mi-IBD* diet) may reduce visceral adiposity and risk of  
448 MAFLD; reduced visceral adiposity may facilitate treatment response in IBD patients. Third, these

### *The Mi-IBD diet for Crohn's disease patients*

449 patients also have higher risks of venous thromboembolism (VTE) and coronary artery disease<sup>38</sup>.  
450 IBD patients may be treated with Janus kinase (JAK) inhibitors (e.g., tofacitinib)<sup>39</sup>, but JAK  
451 inhibitors elevate the risk of cardiovascular complications such as VTE<sup>40</sup>. Thus, it is important to  
452 prescribe a healthy diet that minimizes cardiovascular risks in IBD patients. Our Mi-IBD diet  
453 improved fecal metabolites related to protein and energy metabolism as well as markers of  
454 oxidative stress and inflammation and can thus be recommended to CD patients.

455

#### 456 **Limitations**

457 This study has some limitations. First, we did not perform colonoscopies before and after  
458 the intervention to assess mucosal healing. Second, the use of self-selection (patient preference)  
459 for group allocation is a novel approach for this type of study. Although we examined potential  
460 group differences at baseline, we may not have captured additional factors, such as willingness  
461 of the dyadic partner to support the patient.

462

#### 463 **Conclusion**

464 A diet high in fiber and low in saturated fat is well tolerated and can be recommended to  
465 patients with CD. Catering this diet resulted in very high adherence rates, especially compared  
466 with the lack of dietary changes observed in response to one-time diet counseling. Our *Mi-IBD*  
467 diet, especially when combined with the participation of a household member, improved patient  
468 symptoms. We observed significant changes in the proteomic and metabolomic profile of CD  
469 patients, suggesting improvements in systemic inflammation, metabolism, and repair that, if  
470 sustained, could facilitate maintenance of remission and decrease the risk of metabolic syndrome.  
471 Our findings can be used to refine strategies to change eating behavior in IBD patients.

472

473

*The Mi-IBD diet for Crohn's disease patients*

474 **ACKNOWLEDGEMENTS**

475 Icons for figures were created with Noun Project (creators: Amethyst Studio, Adrien Coquet,  
476 Muhammad Ikhsan, Khaerul Ilyas, Maria Kislitsina, Lihum Studio, popcomarts, Dio Sugiharto, and  
477 Stephen JB Thomas) under license CC BY 3.0.

478

479 **INFORMED CONSENT**

480 This study was approved by the University of Miami Institutional Review Board (protocol number  
481 20190548). All participants provided written informed consent before participating in this study.

## The Mi-IBD diet for Crohn's disease patients

### 482 REFERENCES

- 483 1. Sandborn WJ, Feagan BG, Loftus EV, et al. Efficacy and safety of upadacitinib in a  
484 randomized trial of patients with Crohn's disease. *Gastroenterology* 2020; **158**(8): 2123-38.e8.
- 485 2. Limketkai NB, Godoy-Brewer G, Parian MA, et al. Dietary Interventions for the Treatment  
486 of Inflammatory Bowel Diseases: An Updated Systematic Review and Meta-analysis. *Clinical*  
487 *Gastroenterology and Hepatology* 2023; **21**(10): 2508-25.e10.
- 488 3. Godala M, Gaszyńska E, Zatorski H, Małecka-Wojcieszko E. Dietary Interventions in  
489 Inflammatory Bowel Disease. *Nutrients* 2022; **14**(20): 4261.
- 490 4. Damas MO, Garces L, Abreu TM. Diet as Adjunctive Treatment for Inflammatory Bowel  
491 Disease: Review and Update of the Latest Literature. *Current Treatment Options in*  
492 *Gastroenterology* 2019; **17**(2): 313-25.
- 493 5. Mentella CM, Scaldaferrri F, Pizzoferrato M, Gasbarrini A, Miggiano DAG. Nutrition, IBD  
494 and Gut Microbiota: A Review. *Nutrients* 2020; **12**(4): 944.
- 495 6. Logan M, Gkikas K, Svolos V, et al. Analysis of 61 exclusive enteral nutrition formulas  
496 used in the management of active Crohn's disease—new insights into dietary disease triggers.  
497 *Alimentary Pharmacology & Therapeutics* 2020; **51**(10): 935-47.
- 498 7. Hirai F, Ishida T, Takeshima F, et al. Effect of a concomitant elemental diet with  
499 maintenance anti-tumor necrosis factor- $\alpha$  antibody therapy in patients with Crohn's disease: A  
500 multicenter, prospective cohort study. *Journal of Gastroenterology and Hepatology* 2019; **34**(1):  
501 132-9.
- 502 8. Cox RS, Lindsay OJ, Fromentin S, et al. Effects of Low FODMAP Diet on Symptoms,  
503 Fecal Microbiome, and Markers of Inflammation in Patients With Quiescent Inflammatory Bowel  
504 Disease in a Randomized Trial. *Gastroenterology* 2020; **158**(1): 176-88.e7.
- 505 9. Lewis DJ, Sandler SR, Brotherton C, et al. A Randomized Trial Comparing the Specific  
506 Carbohydrate Diet to a Mediterranean Diet in Adults With Crohn's Disease. *Gastroenterology*  
507 2021; **161**(3): 837-52.e9.
- 508 10. Samuel-Hodge DC, Holder-Cooper CJ, Gizlice Z, et al. Family PARTners in Lifestyle  
509 Support (PALS): Family-based weight loss for African American adults with type 2 diabetes.  
510 *Obesity* 2017; **25**(1): 45-55.
- 511 11. Fritsch J, Garces L, Quintero MA, et al. Low-fat, high-fiber diet reduces markers of  
512 inflammation and dysbiosis and improves quality of life in patients with ulcerative colitis. *Clin*  
513 *Gastroenterol Hepatol* 2021; **19**(6): 1189-99.e30.
- 514 12. Ferreira P, Cravo M, Guerreiro CS, Tavares L, Santos PM, Brito M. Fat intake interacts  
515 with polymorphisms of Caspase9, FasLigand and PPARgamma apoptotic genes in modulating  
516 Crohn's disease activity. *Clin Nutr* 2010; **29**(6): 819-23.
- 517 13. Rocha DM, Caldas AP, Oliveira LL, Bressan J, Hermsdorff HH. Saturated fatty acids  
518 trigger TLR4-mediated inflammatory response. *Atherosclerosis* 2016; **244**: 211-5.
- 519 14. Furusawa Y, Obata Y, Fukuda S, et al. Commensal microbe-derived butyrate induces the  
520 differentiation of colonic regulatory T cells. *Nature* 2013; **504**(7480): 446-50.
- 521 15. Crooks B, McLaughlin J, Limdi J. Dietary beliefs and recommendations in inflammatory  
522 bowel disease: a national survey of healthcare professionals in the UK. *Frontline Gastroenterol*  
523 2022; **13**(1): 25-31.
- 524 16. Gallagher K, Catesson A, Griffin LJ, Holmes E, Williams TRH. Metabolomic Analysis in  
525 Inflammatory Bowel Disease: A Systematic Review. *Journal of Crohn's and Colitis* 2021; **15**(5):  
526 813-26.
- 527 17. Meslier V, Laiola M, Roager MH, et al. Mediterranean diet intervention in overweight and  
528 obese subjects lowers plasma cholesterol and causes changes in the gut microbiome and  
529 metabolome independently of energy intake. *Gut* 2020; **69**(7): 1258-68.
- 530 18. Zimmerman TP, Hull SG, McNutt S, et al. Challenges in converting an interviewer-  
531 administered food probe database to self-administration in the National Cancer Institute



## The Mi-IBD diet for Crohn's disease patients

- 532 Automated Self-administered 24-Hour Recall (ASA24). *J Food Compost Anal* 2009;  
533 **22**(Supplement 1): S48-S51.
- 534 19. USNCI. The Healthy Eating Index. 2021. <https://epi.grants.cancer.gov/hei>.
- 535 20. Harvey RF, Bradshaw JM. A simple index of Crohn's-disease activity. *Lancet* 1980;  
536 **1**(8167): 514.
- 537 21. Slavin JL. Position of the American Dietetic Association: Health implications of dietary  
538 fiber. *J Am Diet Assoc* 2008; **108**(10): 1716-31.
- 539 22. Harcombe Z. US dietary guidelines: Is saturated fat a nutrient of concern? *Br J Sports*  
540 *Med* 2019; **53**(22): 1393-6.
- 541 23. Shams-White MM, Pannucci TE, Lerman JL, et al. Healthy Eating Index-2020: Review  
542 and update process to reflect the dietary guidelines for Americans, 2020-2025. *J Acad Nutr Diet*  
543 2023; **123**(9): 1280-8.
- 544 24. USDA, USHHS. Dietary Guidelines for Americans, 2020-2025. 9th ed; 2020.
- 545 25. Hwang C-S, Loftus MT, Mandrup S, Lane DM. Adipocyte differentiation and expression.  
546 *Annual Review of Cell and Developmental Biology* 1997; **13**(1): 231-59.
- 547 26. Sünderhauf A, Hicken M, Schlichting H, et al. Loss of mucosal p32/gC1qR/HABP1 triggers  
548 energy deficiency and impairs goblet cell differentiation in ulcerative colitis. *Cellular and Molecular*  
549 *Gastroenterology and Hepatology* 2021; **12**(1): 229-50.
- 550 27. Anders E, Nebel D, Westman J, Herwald H, Nilsson B-O, Svensson D. Globular C1q  
551 receptor (p33) binds and stabilizes pro-inflammatory MCP-1: a novel mechanism for regulation of  
552 MCP-1 production and function. *Biochemical Journal* 2018; **475**(4): 775-86.
- 553 28. Nassari S, Lacarrière-Keïta C, Lévesque D, Boisvert F-M, Jean S. Rab21 in enterocytes  
554 participates in intestinal epithelium maintenance. *Molecular Biology of the Cell* 2022; **33**(4).
- 555 29. Holt QD, Strauss JB, Moore TG. Patients with inflammatory bowel disease and their  
556 treating clinicians have different views regarding diet. *Journal of Human Nutrition and Dietetics*  
557 2017; **30**(1): 66-72.
- 558 30. Yelencich E, Truong E, Widaman MA, et al. Avoidant restrictive food intake disorder  
559 prevalent among patients with inflammatory bowel disease. *Clinical Gastroenterology and*  
560 *Hepatology* 2022; **20**(6): 1282-9.e1.
- 561 31. Bourdeaudhuij DI. Differences in impact between a family- versus an individual-based  
562 tailored intervention to reduce fat intake. *Health Education Research* 2002; **17**(4): 435-49.
- 563 32. Brown AC, Rampertab SD, Mullin GE. Existing dietary guidelines for Crohn's disease and  
564 ulcerative colitis. *Expert Rev Gastroenterol Hepatol* 2011; **5**(3): 411-25.
- 565 33. Wewer MD, Langholz E, Munkholm P, Bendtsen F, Benedict Seidelin J, Burisch J.  
566 Disease activity patterns of inflammatory bowel disease-A Danish nationwide cohort study 1995-  
567 2018. *J Crohns Colitis* 2023; **17**(3): 329-37.
- 568 34. Vagianos K, Clara I, Carr R, et al. What Are Adults With Inflammatory Bowel Disease (IBD)  
569 Eating? A Closer Look at the Dietary Habits of a Population-Based Canadian IBD Cohort. *Journal*  
570 *of Parenteral and Enteral Nutrition* 2016; **40**(3): 405-11.
- 571 35. Zou ZY, Shen B, Fan JG. Systematic review with meta-analysis: Epidemiology of  
572 nonalcoholic fatty liver disease in patients with inflammatory bowel disease. *Inflamm Bowel Dis*  
573 2019; **25**(11): 1764-72.
- 574 36. Rodriguez-Duque CJ, Calleja LJ, Iruzubieta P, et al. Increased risk of MAFLD and Liver  
575 Fibrosis in Inflammatory Bowel Disease Independent of Classic Metabolic Risk Factors. *Clinical*  
576 *Gastroenterology and Hepatology* 2023; **21**(2): 406-14.e7.
- 577 37. Yarur AJ, Bruss A, Moosreiner A, et al. Higher intra-abdominal visceral adipose tissue  
578 mass is associated with lower rates of clinical and endoscopic remission in patients with  
579 inflammatory bowel diseases initiating biologic therapy: Results of the constellation study.  
580 *Gastroenterology* 2023; **165**(4): 963-75.e5.
- 581 38. Lykowska-Szuber L, Rychter AM, Dudek M, et al. What links an increased cardiovascular  
582 risk and inflammatory bowel disease? A narrative review. *Nutrients* 2021; **13**(8).

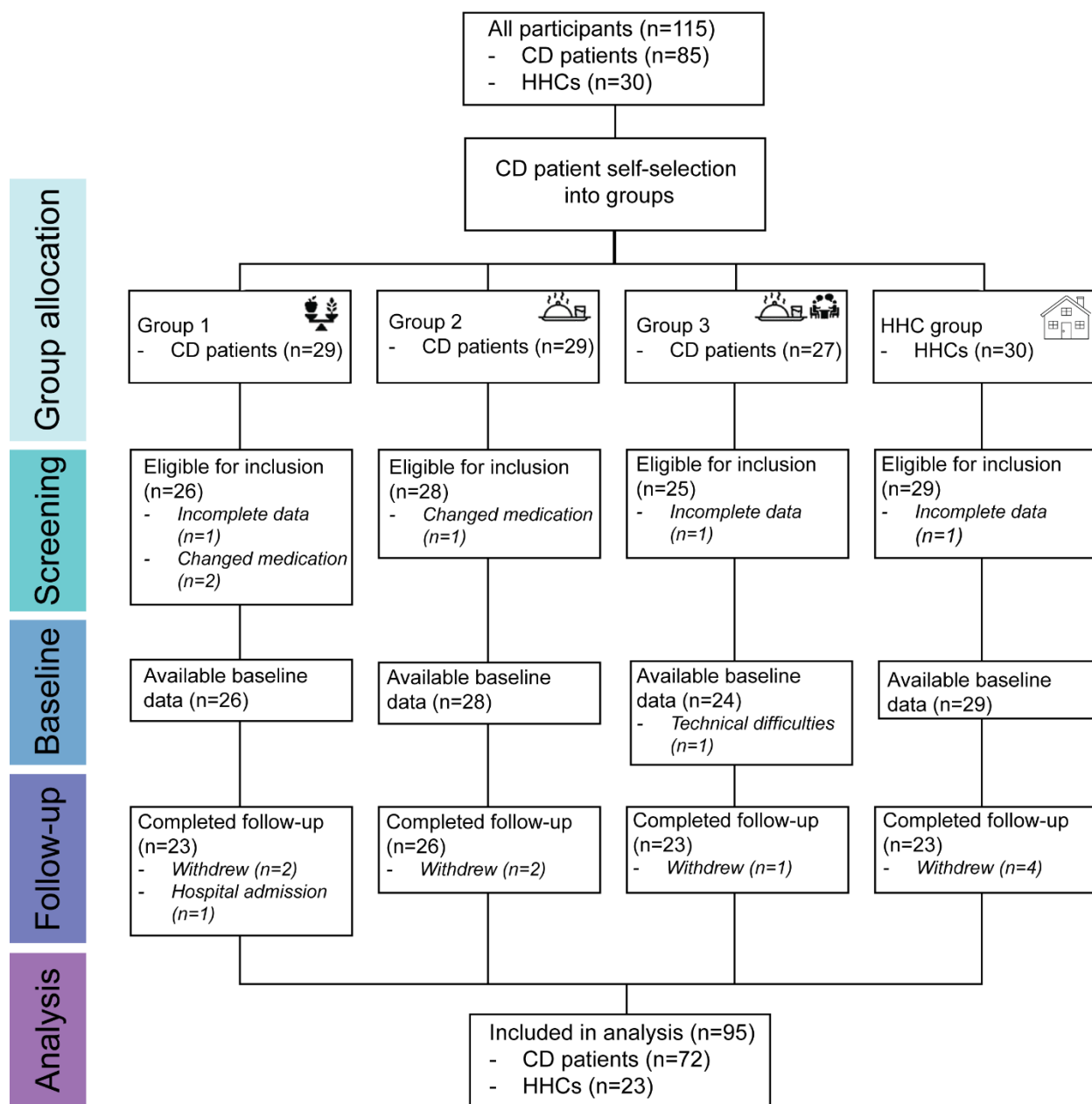
*The Mi-IBD diet for Crohn's disease patients*

- 583 39. Hodge JA, Kawabata TT, Krishnaswami S, et al. The mechanism of action of tofacitinib -  
584 an oral Janus kinase inhibitor for the treatment of rheumatoid arthritis. *Clin Exp Rheumatol* 2016;  
585 **34**(2): 318-28.  
586 40. USFDA. FDA requires warnings about increased risk of serious heart-related events,  
587 cancer, blood clots, and death for JAK inhibitors that treat certain chronic inflammatory conditions.  
588 2021.  
589
- 590



The Mi-IBD diet for Crohn's disease patients

591 FIGURES



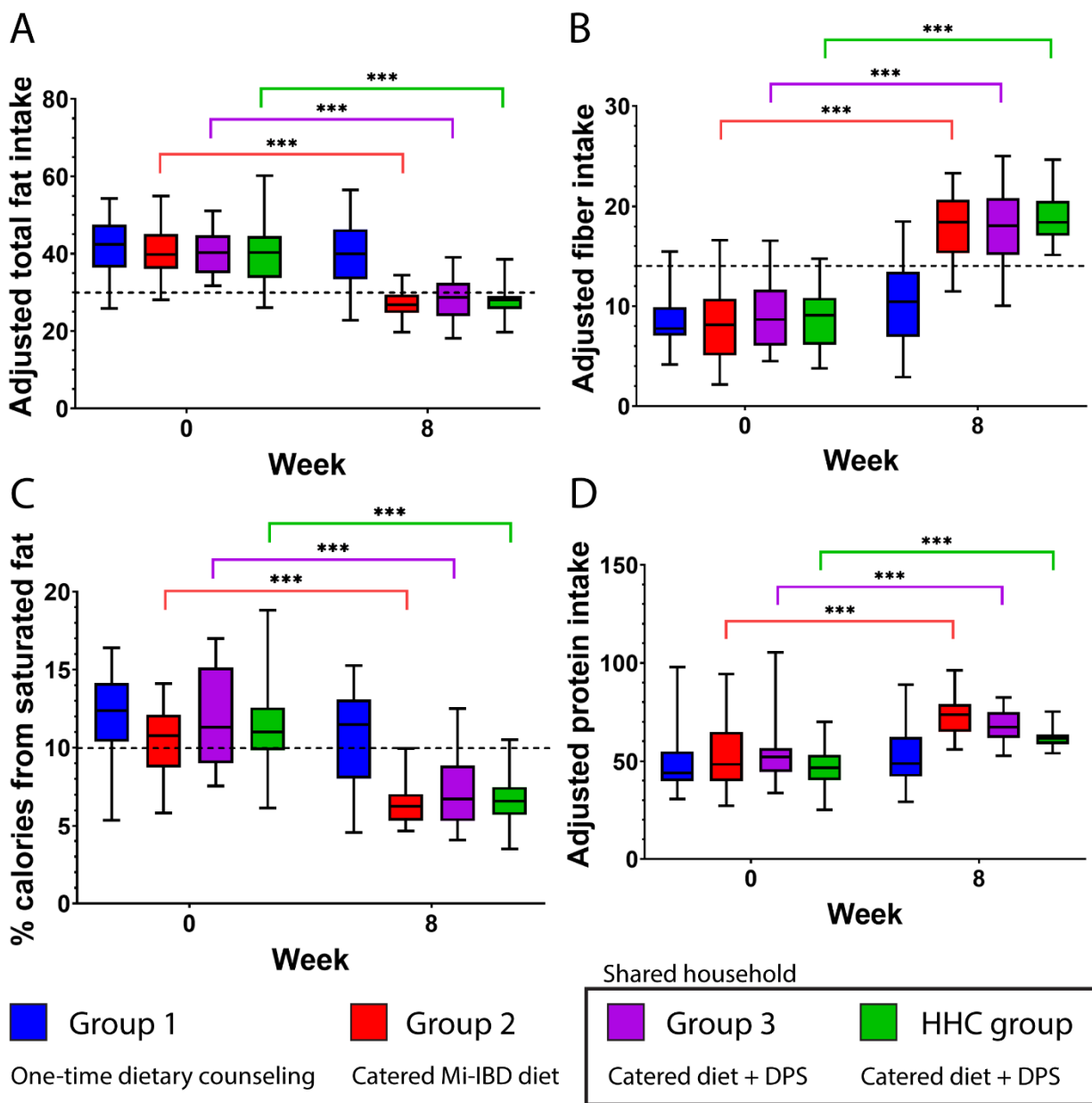
592

593 **Figure 1. Participant enrollment and group allocation flowchart.** Abbreviations: CD = Crohn's

594 disease, HHC = healthy household control.

595

The Mi-IBD diet for Crohn's disease patients



596

597 **Figure 2. The Mi-IBD diet decreased fat intake and increased fiber and protein intake.** A)

598 Fat intake, B) fiber intake, C) percentage of calories from saturated fat, and D) protein intake in

599 all groups. Dashed lines indicate recommended dietary intake amounts. All intakes are adjusted

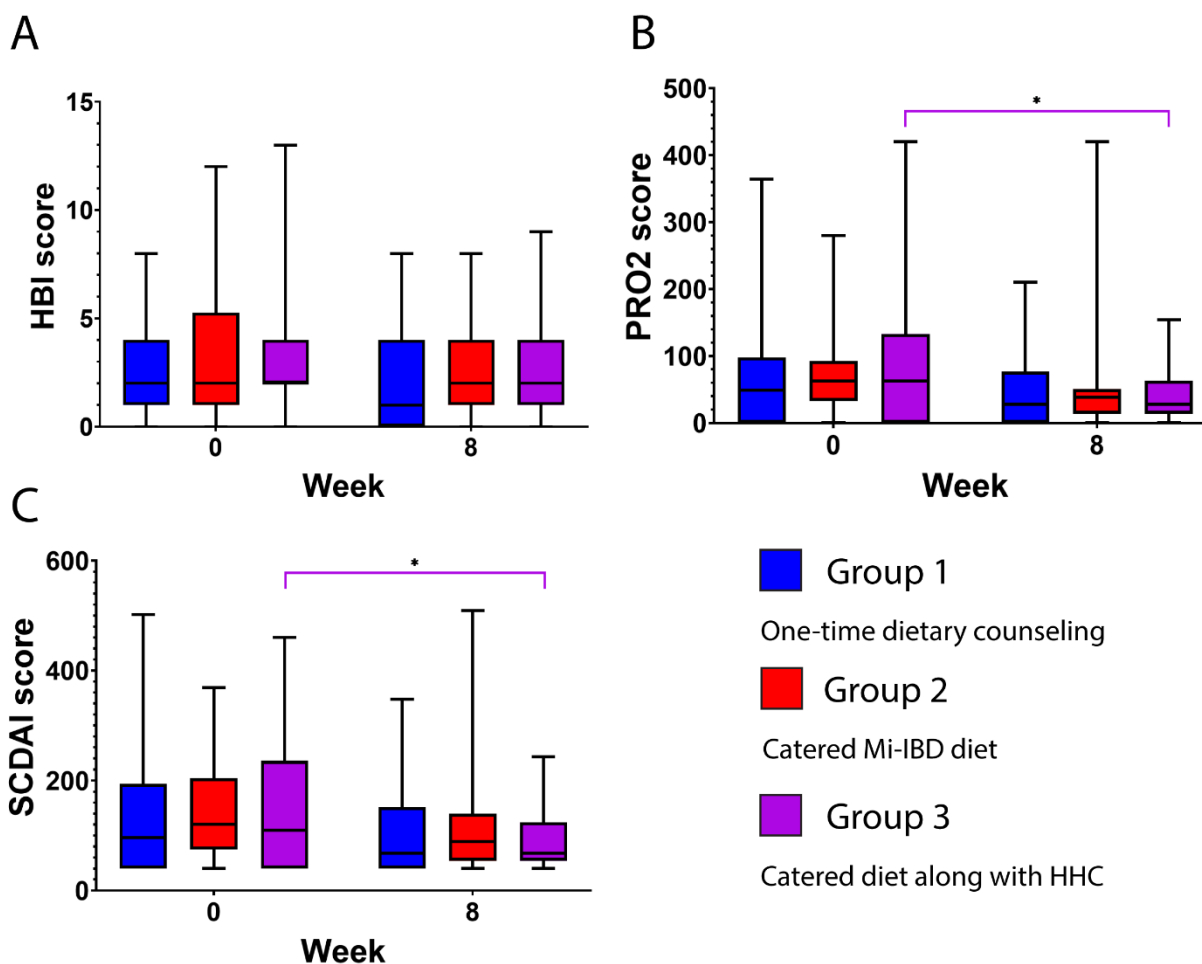
600 for total daily intake (grams per 1,000 calories consumed), except for C. Data shown are from the

601 ASA24. Abbreviations: HHC, healthy household control. ASA24 data were analyzed with paired

602 t-tests with Bonferroni correction. \*  $p < 0.05$ , \*\*  $p < 0.01$ , \*\*\*  $p < 0.001$  (asterisks reflect adjusted

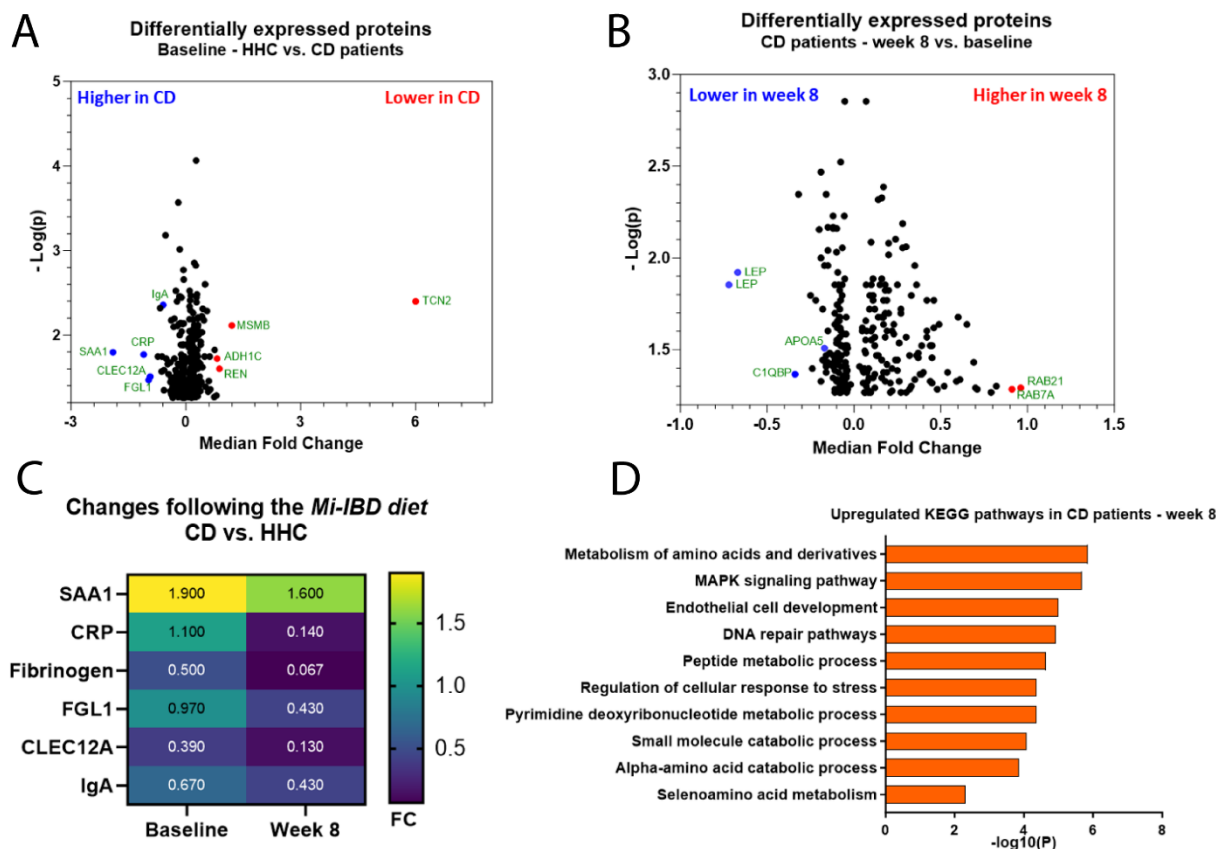
603 p values).

### The Mi-IBD diet for Crohn's disease patients



604  
605 **Figure 3. Receiving the *Mi*-IBD diet along with a family member led to improvements in CD**  
606 **symptom severity.** A) HBI values, B) PRO2 scores, and C) sCDAI scores in the CD patient  
607 groups. Abbreviations: CD = Crohn's disease, HBI = Harvey-Bradshaw index, HHC, healthy  
608 household control, PRO2 = Patient-Reported Outcomes-2, sCDAI = Short Crohn's Disease  
609 Activity Index. Data were analyzed with paired t-tests with Bonferroni correction. \*  $p < 0.05$   
610 (asterisks reflect adjusted p values).  
611

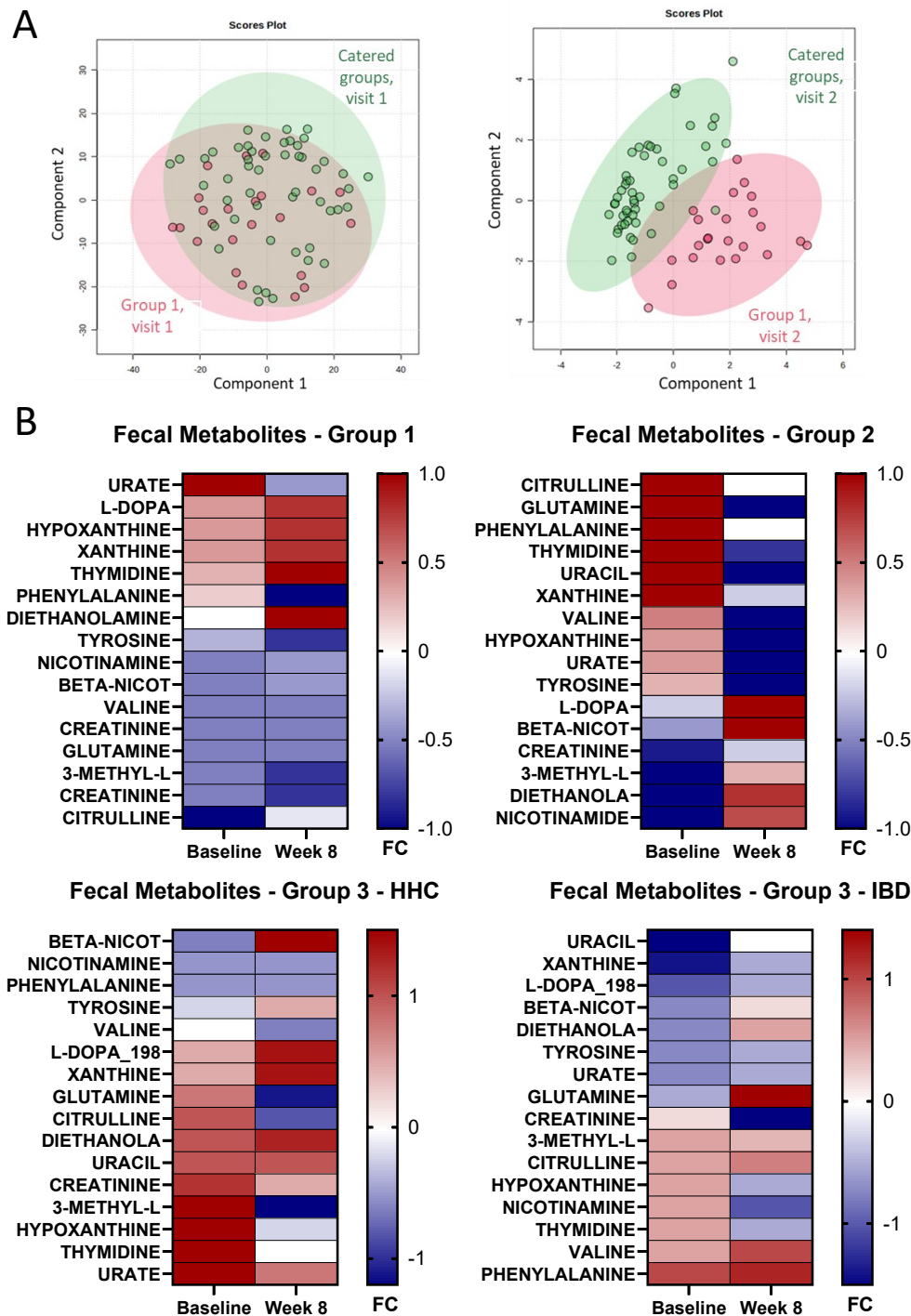
## The Mi-IBD diet for Crohn's disease patients



612  
 613 **Figure 4. Proteomic analysis of serum samples from CD patient-HHC dyads (n=10).** A)  
 614 Volcano plot showing differentially expressed proteins at baseline in the sera of HHCs and CD  
 615 patients. B) Volcano plot showing differentially expressed proteins in the sera of CD patients at  
 616 week 8 compared to baseline. C) Heat map showing the change in select differentially expressed  
 617 proteins between CD patients and HHCs at baseline and week 8. D) KEGG pathway analysis of  
 618 differentially expressed proteins in CD patients at week 8 compared with baseline. CD patient  
 619 composition: 60% ileal only, 40% colonic involvement. Abbreviations: CD = Crohn's disease, HHC  
 620 = healthy household control.

621

## The Mi-IBD diet for Crohn's disease patients



622  
 623 **Figure 5. Metabolomic analysis of stool samples from CD patient-HHC dyads.** A) Principal  
 624 component analysis (PCA) of untargeted fecal metabolites from CD patients (Group 1: n=23 vs.  
 625 Groups 2 & 3: n=49). B) Heat map showing differentially clustered metabolites from the stool of  
 626 HHCs and CD patients before and after the LFD intervention (Group 1: n=23, Group 2, n=26,

*The Mi-IBD diet for Crohn's disease patients*

627 Group 3: n=23, HHCs: n=23). Abbreviations: CD = Crohn's disease, HHC = healthy household

628 control, FC = fold change.

629

*The Mi-IBD diet for Crohn's disease patients*

630 **TABLES**

631 **Table 1.** Demographic and clinical characteristics of the included participants (n=95).

	<b>Group 1 (n=23)</b>	<b>Group 2 (n=26)</b>	<b>Group 3 (n=23)</b>	<b>HHCs (n=23)</b>
Age, median (range)	37 (20-59)	37 (21-66)	37 (23-63)	36 (21-63)
Female, n (%)	14 (60%)	12 (46%)	11 (45.8%)	14 (58.3%)
<b>Race, n (%)</b>				
White	20 (86.9%)	24 (92%)	22 (91%)	19 (79.2%)
Black	1 (4.3%)	0	0	0
Asian	0	0	0	1 (4.2%)
Other	0	0	0	3 (12.5%)
Unknown	2 (8.6%)	2 (7.6%)	2 (8%)	1 (4.2%)
<b>Ethnicity, n (%)</b>				
Hispanic	9 (39%)	12 (46%)	14 (58%)	18 (75%)
Non-Hispanic	14 (60%)	14 (53.8%)	9 (37%)	6 (25%)
Unknown	0	0	1 (4%)	0
<b>Birth country, n (%)</b>				
USA	15 (65%)	11 (42%)	15 (62%)	10 (41.7%)
Other	8 (23%)	15 (57%)	9 (37%)	14 (58.3%)
<b>Marital status, n (%)</b>				
Never married	6 (26%)	8 (30%)	6 (25%)	3 (12.5%)
In a relationship	4 (17%)	2 (7.6%)	2 (8.3%)	3 (12.5%)
Married	11 (47.8%)	14 (53.8%)	16 (66%)	18 (75%)
Divorced/separated	1 (4.4%)	2 (7.6%)	0	0
Baseline BMI (kg/m <sup>2</sup> ), mean (SD)	26.8 ± 6	26.5 ± 5.9	27.08 ± 6.18	28.6 ± 5.6
Age at diagnosis, median (range)	25 (9-45)	24.9 (10-58)	24.51 (12-58)	--
History of GI surgery, n (%)	8 (34%)	9 (34.6%)	11 (45.8%)	--
HBI score, mean ± SD	2.75 ± 2.2	3.1 ± 3.2	3.25 ± 3.1	--
<b>Disease location</b>				
L1 – terminal ileum	7 (30%)	6 (23%)	11 (45%)	--
L2 – colon	2 (8.6%)	2 (7.6%)	2 (8.3%)	--
L3 – ileocolon	14 (60%)	17 (66%)	10 (41%)	--
L4 – upper GI	0	1 (3.8%)	1 (4.1%)	--
<b>Montreal classification</b>				
B1 – inflammatory	15 (65%)	10 (38%)	13 (54%)	--
B2 – fibrostenotic	7 (30%)	12 (46%)	6 (25%)	--
B3 – perforating	1 (4.3%)	4 (15%)	5 (20%)	--
<b>Current medication use*, n</b>				
Aminosalicylates	1	1	0	--
Steroids	0	0	0	--
Immunomodulators	1	3	4	--
Biologics	18	23	18	--

### The Mi-IBD diet for Crohn's disease patients

Previous medication use*, n				
Aminosalicylates	11	10	2	--
Steroids	11	4	13	--
Immunomodulators	5	8	7	--
Biologics				--
1 biologic	3	6	5	--
2 biologics	1	2	1	--
3 biologics	0	2	1	--
>3 biologics	0	1	0	--

632 \*Percentage values are not provided because the categories are not mutually exclusive.

633 *Note.* Abbreviations: BMI = body mass index, CD = Crohn's disease, HBI = Harvey-Bradshaw  
634 Index, GI = gastrointestinal, SD = standard deviation.

635