

1 **Title: Clinical and economic inpatient burden of respiratory syncytial**  
2 **virus (RSV) infections in children < 2 years of age in Germany, 2014-**  
3 **2019: a retrospective health claims analysis**

4 **Authors in order:**

5 Caroline Lade<sup>1</sup> – Lead and corresponding author

6 Lea Bayer<sup>1</sup>

7 Bennet Huebbe<sup>2</sup>

8 Jennifer Riedel<sup>3</sup>

9 Sima Melnik<sup>3</sup>

10 Gordon Brestrich<sup>1</sup>

11 Christof von Eiff<sup>1</sup>

12 Tobias Tenenbaum<sup>4</sup>

13

14 **Affiliations:**

15 <sup>1</sup> *Pfizer Pharma GmbH, Berlin, Germany*

16 <sup>2</sup> *IGES Institut, Berlin, Germany*

17 <sup>3</sup> *Gesundheitsforen Leipzig GmbH, Leipzig, Germany*

18 <sup>4</sup> *Sana Klinikum Lichtenberg, Clinic for Child and Adolescent Medicine, Academic Teaching Hospital*

19 *Charité-Universitätsmedizin Berlin, Germany*

20

21 **Conflict of Interest Statements:**

22 *CL, LB, GB and CvE are all employees of Pfizer Pharma GmbH in Germany, the sponsor of this study. SM*

23 *and JR are employees of Gesundheitsforen Leipzig GmbH, paid by Pfizer to conduct the study. BH is a*

24 *former employee of Pfizer Pharma GmbH Germany. TT is an expert in the field of RSV and received an*

25 *honorarium from Pfizer for input on the study design and review of the results.*

26 **Funding:**

27 *This study was sponsored by Pfizer.*

28

29

## 30 **ABSTRACT**

31 **Background:** Respiratory syncytial virus (RSV) is a common cause for severe lower respiratory tract  
32 infections (LRTI) in children <2 years of age in Germany – though little is known about the clinical and  
33 economic burden of RSV in children with and without risk factors per month of life.

34 **Methods:** In a retrospective health claims analysis, we identified RSV inpatient cases between 2014 and  
35 2019. We assessed incidence rates, mortality rate, health resource utilization, associated direct costs per  
36 case and excess costs for 30, 90 and 365 days after hospital admission matched to a control group. The  
37 outcomes are reported separately for the first and second year of life (i.e., for infants and toddlers) and  
38 were stratified by month of life, preterm and risk status (i.e., presence of underlying disease: chronic  
39 respiratory or cardiac disease, immunosuppression, neurological diseases, diabetes, conditions  
40 originating in the perinatal period).

41 **Results** RSV-attributable hospital incidence rate was higher in infants (30.25/1,000) than toddlers  
42 (14.52/1,000), highest in the first three months of life (44.21/1,000), in infants born preterm (64.76/1,000)  
43 or with any underlying disease (54.85/1,000). Mortality rate was also higher for infants (0.08/1,000) than  
44 toddlers (0.04/1,000). Mean 30-day excess costs ranged from 2,953 € for infants born full-term at no risk,  
45 hospitalized for 5 days, to 6,694 € for infants born extremely premature, hospitalized for 7 days.

46 **Conclusion:** In Germany, the clinical and economic burden of RSV is substantial, especially in the most  
47 vulnerable population, that is, very young infants, those born premature and/or those with an underlying  
48 disease.

49 **Introduction**

50 Respiratory syncytial virus (RSV) is a common cause of acute lower respiratory tract infections (LRTI) at all  
51 ages worldwide. RSV infections are most severe, often leading to hospitalizations, in children under the  
52 age of 5 [1]. In children, RSV manifests with symptoms ranging from rhinitis, bronchiolitis to pneumonia  
53 [2]. By the age of two years, most children have had an RSV infection at least once [3]. Severe cases occur  
54 especially in high-risk groups which include children born prematurely and children with underlying  
55 diseases like chronic respiratory or cardiac disease, immunosuppression, neurological diseases, diabetes,  
56 or conditions originating in the perinatal period [4]. Morbidity and mortality due to RSV are higher in  
57 children at risk than no risk [5]. However, little is known about either clinical or economic burden of RSV  
58 in the most vulnerable children < 2 years of age in Germany.

59 The global burden of RSV was estimated in 2019 at 33 million episodes a year among children under five  
60 years of age or younger, with 3.6 million hospitalizations, 26,300 RSV in-hospital deaths, and 101,400 RSV-  
61 attributable overall deaths [6]. The majority of cases were accounted for by children under one year of  
62 age. For industrialized countries, hospital incidence rates were reported for RSV-associated acute LRTI at  
63 38.5/1,000 in children under one year of age and 24.3/1,000 in children younger than 5 years of age [6].  
64 Hospital incidence rates are highest within the first month of age, decreasing steadily month by month  
65 thereafter [7, 8].

66 In Germany, the clinical burden of RSV in children < 2 years of age has only very recently been described  
67 [9-11] but data on the burden of RSV in more vulnerable children are still missing, that is for very young  
68 infants, children born prematurely or with an underlying disease. Hospital incidence rates of 14.9-28.6 per  
69 1,000 infants (i.e., first year of life) were reported between 2019-2022 [11]. For toddlers (i.e., second year  
70 of life), the hospital incidence rate ranged between 2.5-5.6 per 1,000 persons. Thereby, most RSV hospital  
71 cases were identified in infants under six months of life based on medical records of children under five  
72 years of age between 2015 and 2018 [10] – but no incidence rates were reported. Despite high awareness

73 and good testing practice, incidence rates in children may be underestimated [12]. Likely large proportions  
74 of cases of respiratory diseases that are not readily identified as RSV may be documented as RSV-  
75 attributable unspecified diagnoses of, for instance, unspecified bronchiolitis, in young children under the  
76 age of 2 years [13], contribute to an underreporting of RSV. Such underestimation in combination with an  
77 ever-increasing RSV hospital incidence rate that almost doubled since 2010 [9] highlights the importance  
78 to better understand the clinical burden of RSV in more detail, especially in the most vulnerable  
79 population of children in Germany.

80 In addition to the clinical burden, RSV infections also pose a substantial economic burden to the  
81 healthcare system. A recent review summarizing data from Europe, North America, and Australia between  
82 1987 and 2017 reported average costs of 3,452 € per inpatient episode among children under five years  
83 of age [14]. Specifically for Germany, costs of 3,001 € - 3,961 € were reported for RSV cases in children ≤2  
84 years of age between 2019-2022 [11]. For children under one year of age, costs of 3,329 € were reported  
85 between 2015-2018 [9]. Costs increased to 7,825 € - 11,045 € for severe cases that required ICU admission  
86 [11]. Since previous reports of costs in 2002, costs have increased by approximately 15% [15]. With the  
87 highest clinical burden in infants with risk factors, more detailed data are needed on healthcare resource  
88 utilization (HRU) and associated costs of RSV in the most vulnerable population to better understand the  
89 economic burden in Germany.

90 To fill in these gaps in the clinical and economic burden of RSV in children in Germany, we conducted  
91 retrospective analyses using health claims data to assess the incidence rate, mortality, HRU, and costs  
92 associated with RSV in hospitalized children <2 years of age in Germany from 2014 to 2019, stratified by  
93 month of life and the presence of risk factors (prematurity and/or underlying disease).

## 94 **Methods**

### 95 Study design and data source

96 In this study, we conducted an observational, retrospective database analysis. Anonymized health claims  
97 data were obtained from the German Analysis Database for Evaluation and Health Services Research  
98 [*Deutsche Analysedatenbank für Evaluation und Versorgungsforschung*] (DADB) administered by  
99 Gesundheitsforen Leipzig GmbH [16] containing Statutory Health Insurance (SHI) data on approximately  
100 four million insured persons (~5 % of the SHI population), representative of the German population in  
101 terms of age, sex and morbidity.

#### 102 Study population and case identification

103 Health claims data were selected from insured children  $\leq$  24 months of life, born between January 1<sup>st</sup>,  
104 2013, and December 31<sup>st</sup>, 2019, who were fully observable for either their first or second year of life or  
105 until death. Cases were identified within an observation period  
106 between January 1<sup>st</sup>, 2014 and December 31<sup>st</sup>, 2019, to avoid confounds due to irregular RSV seasons  
107 during and after the COVID-19 pandemic [17]. Case identification was based on either a narrow definition  
108 including RSV-specific ICD-10-GM codes, J12.1 (acute pneumonia due to RSV), J20.5 (acute bronchitis due  
109 to RSV), J21.0 (acute bronchiolitis due to RSV), and B97.4 (RSV classified elsewhere) or a wide definition  
110 including both RSV-specific diagnosis codes and RSV-attributable ICD-10-GM codes of unspecified  
111 bronchiolitis (J21.8, J21.9), bronchitis (J20.8, J20.9), pneumonia (J12.8, J12.9, J18.8, J18.9) or acute lower  
112 respiratory tract infections (J22, UBP). In this wide definition, UBP cases were included if the diagnosis  
113 occurred during the RSV season as defined by RKI for each year, typically between December and February  
114 according to Cai et al. [18] (see Supplemental Table 1). Previous studies have repeatedly employed such  
115 wide case definition [e.g., 19, 20] to increase the sensitivity of capturing RSV cases without a substantial  
116 loss of specificity [21]. For case identification, main and secondary diagnoses were taken into account. All  
117 analyses were carried out separately for incident infants (first year of life) and toddlers (second year of  
118 life; for case characteristics, see Table 1). The age of patients in months of life was estimated at the time

119 of the index diagnosis. For the analysis of costs, first, patients with multiple cases (n = 824 cases, 10.7 %),  
120 second, patients who were not fully observable for the maximum follow-up period of one year after the  
121 index date (n = 208 cases, 3% ), third, patients for who there was no exact match amongst control patients  
122 (n = 25, 0.38 %) were excluded in order to reliably and consistently assess long-term costs (Figure S1).  
123 Patients were further characterized by preterm status (full-term, extreme preterm and early/late  
124 preterm) and risk status (no risk, any risk, Table 1). Preterm status was defined by the presence of the  
125 ICD-10 codes P07.2, which characterizes newborns with extreme prematurity, born before the 29<sup>th</sup>  
126 gestational week (henceforth extreme preterm), and P07.3 which characterizes other preterm infants,  
127 infants born between the 29<sup>th</sup> and the 37<sup>th</sup> gestational week (henceforth early/late preterm). Risk status  
128 was defined by the presence of at least one risk factor based on ICD-10 codes for conditions originating in  
129 the perinatal period, chronic or congenital cardiac or respiratory disease, immunosuppression,  
130 neurological disease, diabetes mellitus or a patient history of prophylactic immunotherapy (Table S2). As  
131 conditions originating in the perinatal period also include prematurity, the clinical burden of RSV was  
132 additionally described for children at risk excluding prematurity, that is for children with underlying  
133 disease born full-term.

#### 134 Definition of episodes.

135 Hospital episodes were defined as overnight stays. The start of an episode was defined by the admission  
136 date of either main or secondary RSV or UBP diagnosis (i.e., index date). An episode lasted until the  
137 discharge date or until no further RSV or UBP diagnosis occurred within 30 days of the previous diagnosis  
138 to capture possible readmissions [10] and to avoid an overestimation of case counts. Two types of  
139 episodes were classified: first, RSV episodes which were based on either RSV-specific diagnosis codes only  
140 or RSV-specific diagnosis codes plus an additional UBP diagnosis code during the duration of the episode;  
141 second, UBP episodes that are based on UBP diagnosis codes only. For the wide case definition, both RSV

142 and UBP episodes were considered for the assessment of outcomes measures; for the narrow definition  
143 only RSV episodes were considered.

#### 144 Assessment

145 Study outcome measures included incidence rates, 90-day all-cause mortality rate, all-cause healthcare  
146 costs and HRU. Incidence rates were calculated as number of cases divided by the annual number of  
147 newborns in the DADB (Table S6) and are expressed per 1,000 persons per year. For the estimation of  
148 incidence rates per month of life, the annual base population was divided by 12 months. For age group  
149 stratifications, the annual base population was divided by 12 and then multiplied by the number of  
150 months the respective age group encompasses, assuming approximately equal numbers of children per  
151 month of life.

152 The 90-day all-cause mortality rate was calculated as the number of deceased patients within the episode  
153 plus 90 days thereafter divided by the total population size across the observation period. Due to relatively  
154 low numbers of fatal cases, mortality rates could only be computed across the entire study period from  
155 2014-2019. The mortality rate was stratified by preterm and risk status.

156 HRU assessment included hospital length of stay (LOS), ICU admission status and ventilation use. LOS was  
157 assessed per episode and stratified by <5, 5-8 and >8 days. In addition, LOS was assessed for all-cause  
158 hospitalizations during 30, 90 and 365 days after the index date. ICU stay was assessed per episode based  
159 on admission to or discharge from ICU. Ventilation use was assessed per episode based on OPS codes for  
160 oxygen therapy (OPS 8-720), non-invasive ventilatory support (High Flow Nasal Cannula, HFNC: OPS 8-  
161 711.4, OPS 8-712.1; Continuous Positive Airway Pressure, CPAP: OPS 8-711.0, OPS 8-712.0), invasive  
162 mechanical ventilation (OPS 8-711.1, OPS 8-711.2).

163 Mean direct healthcare costs were calculated per episode, mean excess costs were estimated for short-  
164 and longer-term follow-up time windows (30, 90, 365 days after hospital admission). Excess costs were



165 compared 1:1 to matched control patients across healthcare sectors based on month of life, sex, preterm  
166 status using Mann-Whitney-Wilcoxon test for continuous variables. P-values were adjusted for multiple  
167 comparisons, if necessary, using the Benjamini-Hochberg procedure to limit the probability of false  
168 detections. The control cohort was also observable for at least one year after the index date of the  
169 matched incident patient and did not have an RSV diagnosis within that time or a UBP diagnosis during  
170 the RSV season. 25 cases (0.4%) for which there was no exact match were excluded from all cost analyses.  
171 All cost values were adjusted to 2019 per consumer price index [22] per case per time window before  
172 being averaged for each time window across the study period 2014-2019.

173 All outcomes were stratified, whenever case numbers allowed, by episode type (RSV-UBP, RSV, UBP),  
174 month of life (1-12 months and 13-24 months), calendar month (January to December), preterm (full-  
175 term, extreme preterm and early/late preterm) and risk status (no risk, any risk). All analyses were  
176 descriptive and exploratory. As there were no a priori hypotheses, no planned comparisons were  
177 performed.

178 Finally, we extrapolated mean costs to the population-level in order to estimate the average annual  
179 economic burden for Germany. To this end, we first determined an extrapolation factor per calendar year  
180 based on the number of live births per year (mean across 2014 - 2019 = 765,680 live births; [23]) and the  
181 number of newborns in the DADB (both in Table S6) and then multiplied that with the annual case  
182 numbers. The extrapolated mean annual number of hospitalizations were multiplied with the mean excess  
183 costs for 30 days after hospital admission.

184 *Ethical considerations.* This study used aggregated and anonymized health claims data, therefore not  
185 requiring approval from Institutional Review Boards or Ethical Committees or informed consents from  
186 patients. The study was conducted in accordance with legal and regulatory requirements and research  
187 practices described in the “Good Epidemiological Practice guidelines issued by the International  
188 Epidemiological Association” [24].

## 189 **Results**

190 Between 2014-2019, there were 183,952 infants within their first year of life and 146,752 toddlers in their  
191 second year of life in the database (for more information on the annual base population, see Table S6).

### 192 Clinical burden – incidence and mortality

193 We identified 5,565 cases in infants (based on 5,248 main diagnoses, 317 secondary diagnoses) and 2,131  
194 cases in toddlers (based on 1,927 main diagnoses and 204 secondary diagnoses) across the study period  
195 (for further characteristics see Table 1; also see patient flow in Figure S1). Most cases were identified  
196 within the RSV season between December and March (88% of the cases in infants, 93% in toddlers).  
197 Among infants, 66.6% of cases were identified based on an RSV diagnosis code; in toddlers it was 34.8%.  
198 In infants, 45.65% cases were diagnosed with acute bronchiolitis due to RSV, 29.86% with acute bronchitis  
199 due to RSV, 21.70% with acute pneumonia due to RSV and 2.79% with RSV classified elsewhere. In  
200 contrast, in toddlers, 43.10 % cases were diagnosed with acute pneumonia due to RSV, 32.90% with acute  
201 bronchitis due to RSV, 18.97% with acute bronchiolitis due to RSV and 5.03% with RSV classified  
202 elsewhere. Moreover, 86.70% of infants were born full-term, 13.30% preterm, similar in toddlers. 30.8%  
203 of infants and 35.1% of toddlers were considered at risk (see Table 1 for more specific case characteristics).

204 The hospitalization incidence rate in infants was estimated at 28.95-33.07 per 1000 between 2014  
205 and 2019, with a mean of 30.25 per 1,000 (Table 2). In toddlers, the incidence rate was estimated at 10.95-  
206 18.13 per 1,000 between 2015 and 2019, with a mean of 14.52 per 1,000 (for toddlers we only included  
207 data from 2015 onwards to fully observe all children in the database within their second year of life who  
208 were born between 2013-2019. More specifically, for infant cases based on an RSV-specific diagnosis, the  
209 annual hospitalization incidence rate was 17.25-22.89 per 1,000 between 2014-2019 with a mean of 20.15  
210 per 1,000; for toddlers, it was 3.70-6.58 per 1,000 with a mean of 5.05 per 1,000. Extrapolated to the

211 population-level, that is 23,152 cases of infants (15,469 RSV-specific cases) and 11,228 cases of toddlers  
212 (3,907 RSV-specific cases) per year.

213 Across the first two years of life, 50% of cases occur already within the first 6 months of life, with  
214 specifically high incidence rates in the second and third month of life (57.28 and 44.88 per 1000 person-  
215 years, respectively), continuously decreasing thereafter, across the second year of life (Figure 1, Table S4).  
216 This is driven by infants with an RSV-specific diagnosis for which the incidence rate in the second and third  
217 month was at 45.21 and 34.84, respectively. For infants with an RSV-specific diagnosis, the incidence rate  
218 is 2.4 times higher in the first three months than for the remaining first year of life, and 2.9 times higher  
219 in the first 6 months than in the second half a year of life.

220 Incidence rates were highest for infants born prematurely (preterm: 64.76, full-term: 27.97) and for  
221 infants at risk including prematurity (any risk: 58.73, no risk: 28.92; for more details see Table 3), especially  
222 shortly after birth (Figure 1, Table S4). Compared to infants at no risk, incidence rates were 2.2 times  
223 higher in infants with any underlying disease, 2.5 times higher in early/late preterms, and 3.3 times higher  
224 in infants born extremely premature. For toddlers, prematurity and underlying risk factors remain to play  
225 a great role with highest incidence rates in toddlers that were born prematurely (preterm: 34.49, full-  
226 term: 13.19) and those at risk (at risk: 28.92, no risk: 11.44). Compared to toddlers at no risk, incidence  
227 rates were 2.3 times higher in toddlers with any underlying disease, 2.8 times higher in toddlers with  
228 early/late prematurity, and 6.1 times higher in toddlers with extreme prematurity.

229 Between 2014-2019, 20 children died within the episode or 90 days thereafter – 14 infants and 6 toddlers.  
230 9 of the fatal cases were born prematurely, 11 full-term. All 20 fatal cases had at least one risk factor  
231 (including prematurity). 11 children died after an RSV-specific diagnosis, 9 after a UBP diagnosis (that  
232 occurred within the RSV season). Extrapolated to the population-level, there were a total of 538 fatal  
233 cases per year, 350 infants and 188 toddlers. The annual all-cause mortality rate after an RSV infection in

234 children under two years is estimated at 0.06 per 1,000 children, 0.08 per 1,000 infants and 0.04 per 1,000  
235 toddlers.

### 236 Economic burden and healthcare resource utilization related to RSV infections.

237 Mean direct and mean excess costs as well as HRU were estimated based on 4,909 cases in infants and  
238 1,730 cases in toddlers across the study period for which there was a 1:1 exact matched control patient  
239 and which were observable for at least one year after the index date (for further characteristics see Table  
240 1; also see patient flow in Figure S1). Among infants, 68.7% of cases were identified based on an RSV-  
241 specific diagnosis code, in toddlers it was 35.7%.

242 Infants were hospitalized for a median LOS of 5 days, toddlers for 4 days, within 30 days after hospital  
243 admission. The LOS for both infants and toddlers with an RSV-specific diagnosis was 5 days. Infants and  
244 toddlers with acute pneumonia due to RSV (J12.1) had the longest median LOS of 7 and 6 days,  
245 respectively. Children with acute bronchiolitis due to RSV (J21.0) had shorter median LOS of 5 days;  
246 children with acute bronchitis due to RSV (J20.5) or RSV classified elsewhere (B97.4) had the shortest  
247 median LOS of 4 days. For infants born early/late preterm, the median LOS was 6 days. For those born  
248 extreme premature, it was 7 days or even 8 days for infant cases with an RSV-specific diagnosis. In  
249 toddlers, this was 5 days for those born early/late preterm and 6 days for those with extreme prematurity.

250 0.9% of cases in infants were admitted to ICU, whereby 83.7% infants were born full-term and  
251 60.5% were between the age of 1-3 months of life. For toddlers, 0.7% of cases were admitted to ICU,  
252 whereby 91.7% were born full-term and 66.7% were between 13-18 months of life. Risk factors (including  
253 prematurity) did not increase the likelihood of ICU admission (55.8% infants, 44.7% toddlers were  
254 admitted to ICU). Further, 5.9% of infants required some form of ventilation use: 1.8% oxygen therapy,  
255 3.6% other non-invasive ventilatory support (1.9% HFNC, 1.7% CPAP) and 0.5% invasive mechanical  
256 ventilation. Only 1% of toddlers required ventilatory support (0.9% HFNC, 0.1% CPAP).

257 Mean direct costs attributed to those healthcare resource utilizations were higher in infants (3,775 €) than  
258 in toddlers (3,062 €, for more details per age group see Table 4), higher for those born premature or at  
259 risk compared to children at no risk (Table 5). For infants, mean costs were 4.7 times higher for cases that  
260 required ICU admission (17,273 €) than for cases which did not require ICU admission (3,655 €). For  
261 toddlers, mean costs were even 9.5 times higher for cases that required ICU admission (27,605 €) than for  
262 cases which did not require ICU admission (2,891 €). Infant cases that required invasive mechanical  
263 ventilation support were especially high, with mean costs up to 75,188 €. For both infants and toddlers,  
264 mean costs were higher for cases with an RSV episode (4,021 € and 3,641 €, respectively) than for cases  
265 with a UBP episode (3,234 € and 2,741 €, respectively). Thereby, mean costs varied between different  
266 RSV-specific diagnosis codes. That is, in infants, in the order from high to low case numbers, on average,  
267 acute bronchiolitis due to RSV (J21.0) cost 4,061€; acute bronchitis due to RSV (J20.5) cost 2,883 €; acute  
268 pneumonia due to RSV (J12.1) cost 5,773 €; cases with RSV classified elsewhere (B97.4) cost 4,996 €. In  
269 toddlers, acute pneumonia due to RSV (J12.1) cost 4,458 €; acute bronchitis due to RSV (J20.5) cost 3,118  
270 €; acute bronchiolitis due to RSV (J21.0) cost 3,310 €; cases with RSV classified elsewhere (B97.4) cost  
271 3,706 €.

272 Mean excess costs increased for both infants and toddlers over the follow-up periods of 30, 90 and 365  
273 days (Table 4), whereby costs were consistently higher for patients than matched controls (Table S5).  
274 Moreover, mean excess costs were higher for children born premature or at risk (Table 5). Mean excess  
275 costs within 30 days after hospital admission were also higher for both infants and toddlers that required  
276 ICU admission during the RVS/UBP episode (11,809 € and 23,556 €), respectively) than for infants and  
277 toddlers that did not require ICU admission (3,318 € and 2,924 €, respectively). Additionally, mean excess  
278 costs within 30 days after hospital admission were higher for cases that required ventilatory support  
279 during the RVS/UBP episode, ranging from 5,808 € for oxygen therapy to 31,404 € for invasive mechanical

280 ventilation in infants. For both infants and toddlers, cases based on an RSV episode were more costly  
281 (3,669 € and 3,521 €, respectively) than cases based on a UBP episode (2,786 € and 2,815 €, respectively).

282 An estimation of the annual economic burden of RSV-related hospitalizations, based on annual  
283 case numbers extrapolated to the population-level of 23,152 infants and 11,228 toddlers at mean excess  
284 costs of 3,392 € for infants and 3,067 € for toddlers, results in costs of 112,967,860 € per year for children  
285 under the age of 2 years; that is, ~64.5 mil € for cases with an RSV-specific diagnosis (based on 15,469  
286 cases in infants and 3,907 cases in toddlers) and ~48.5 mil € for cases with a UBP diagnosis (based on 7,683  
287 cases in infants and 7,321 cases in toddlers).

## 288 Discussion

289 In this retrospective cohort study based on a representative sample of SHI data, we assessed a nation-  
290 wide, and population-based clinical and economic burden of RSV infections in young children < 2 years in  
291 Germany between 2014-2019, quantifying hospital incidence rate, mortality rate, HRU and associated  
292 costs of RSV. The results show that hospital incidence rate, HRU and associated costs were higher in infants  
293 than in toddlers and were highest for very young infants, infants born prematurely and infants at risk.

294 The results show that hospital incidence rates from 2014-2019 that were based on a wide case  
295 definition, taking RSV-UBP cases into account, (28.95-33.07 per 1,000 in infants; 10.95-18.13 per 1,000 in  
296 toddlers) are higher than previous reports for Germany from 2019-2022 that were based on a narrow case  
297 definition, considering RSV-specific cases only (14.9-28.6 per 1,000 in infants, 2.5-5.6 per 1,000 in  
298 toddlers; [11]). Though, our hospital incidence rates based on the narrow case definition are lower (18.50-  
299 23.74 per 1,000 in infants; 3.98-6.95 per 1,000 in toddlers) – likely due to the earlier observation period;  
300 the disease burden is known to increase year by year [9]. Applying an underreporting factor of 1.35 (1.3  
301 in infants < 6 months and 1.4 in infants 6-11 months of age) as reported by Haeberer et al. [12] to our  
302 RSV-specific incidence rate results in 24.98-32.05 per 1,000 in infants which approximates estimates for

303 the overall RSV-UBP study population. While these estimates are lower than the mean hospital incidence  
304 rate of 38.5/1,000 in infants in other industrialized countries across the world [6], they are comparable to  
305 estimates from neighboring European countries, for instance Denmark with a hospital incidence rate of  
306 29/1,000 in infants [8]. This substantiates an estimation based on a wide case definition including RSV-  
307 UBP cases to describe the RSV-attributable clinical burden for infants and toddlers.

308 We also show that hospital incidence rates were highest in very young infants during the first months of  
309 life, in line with previous reports [7, 8, 25, 26]. For Germany, between 2006-2018, Johannesen et al. [26]  
310 reported substantially higher RSV-attributable hospital incidence rates of 72.5 per 1,000 in infants  
311 between 1-3 months of life than 38.6 and 17.5 per 1,000 in infants between 4-6 and 7-12 months of life,  
312 respectively. In comparison, we reported slightly lower incidence rates of 44.21, 35.36 and 20.72 per 1,000  
313 persons in infants between 1-3, 4-6 and 7-12 months of life, respectively. However, this is likely due to  
314 the difference in methodology; while we are using counts of ICD-10 diagnosis codes, Johannesen et al.  
315 [26] modelled incidence rates using time-series estimation. The modelled estimates are comparable to  
316 average incidence rates reported across the European Union (EU): 71.5, 38.9 and 17.6 per 1,000 persons  
317 in infants between 1-3, 4-6 and 7-12 months of life, respectively [27]. As time-series modeling is less  
318 sensitive to the effects of underreporting and as the results are comparable across the EU, the burden of  
319 RSV in children may be even higher in Germany than the results of our study suggest – despite the  
320 inclusion of UBP cases during the RSV season to take underreporting into account. Future studies  
321 employing novel approaches to the estimation of incidence rates like time-series modeling are needed.

322 Further extending previous findings, we show in this study that the risk of contracting severe  
323 forms of RSV in newborns is approximately twice as high right after birth in infants at risk, that is infants  
324 born prematurely or with any underlying disease, compared to infants without any risk factors. Several  
325 risk factors like prematurity, bronchopulmonary dysplasia (BPD) or congenital heart disease (CHD) have  
326 been widely acknowledged as risk factors for severe outcomes of RSV, globally [28-31] and in Germany

327 [4], but no detailed evidence is yet available on the burden of RSV in this most vulnerable population  
328 during the first few months of life in Germany. For infants with underlying disease (including BPD and  
329 CHD), we show that the risk of infection is already imminent right after birth, in the first month of life. For  
330 preterm infants, the risk is highest during the second and third month of life. As newborns have an  
331 immature immune system, and their small airways are especially affected by swelling and mucous  
332 production due to the infection and inflammation [32]), in the first few months of life infants are most  
333 vulnerable, especially when at risk (due to prematurity or any underlying disease). The results of this study  
334 show that the impact of premature birth and underlying disease on the risk for hospitalization seems to  
335 persist well beyond the first few months of life, well into toddler age and possibly beyond.

336 Moreover, while the hospital burden of RSV in Germany is already substantial, it represents only part of  
337 the overall burden of RSV, including largely severe cases that require hospitalization. The overall burden  
338 of RSV, however, includes also less severe RSV infections that present to the outpatient sector. The  
339 estimation of the outpatient burden is, however, challenging not least because of similar symptomology  
340 to other respiratory diseases and less established testing practice, leading to an even larger  
341 underreporting. Data on the outpatient burden are currently missing and should be assessed in the future  
342 once more advances are made to identify RSV in the outpatient sector.

343 HRU and associated costs underline the risk for severe outcomes of RSV in children with risk factors as  
344 seen in longer LOS and admissions to ICU. We show that for children born early/late or extreme preterm,  
345 the LOS is one and two days higher, respectively, than the previously reported 5 days [9-11]. 2.1%-8.0%  
346 infants were reported to be admitted to ICU [9-11] – largely exceeding our estimates of ~1%, likely due to  
347 methodological differences to identify ICU admissions. The highest ICU admission rate, though, was  
348 previously found in children under 6 months of age (9.3%) [10].

349 Associated costs were highest in the first few months of life, especially for those at risk. This extends  
350 previous findings for Germany [9, 11] and is in line with other recent cost estimates from other European



351 countries like France [25, 33]. For example, Kramer et al. [33] estimated mean costs per inpatient episode  
352 for full-term infants at 3,437 €, with higher costs for infants <3 months of age (3,958 €) than infants >3  
353 months of age (3,234 €). Kramer et al. [33] also reported higher estimates in infants born prematurely at  
354 6,324 €. For Germany, we additionally show that costs are specifically high for infants born extremely  
355 prematurely. However, even though the costs are highest for children at risk, the economic burden is  
356 driven by the large clinical burden in otherwise healthy children under the age of two years.

357 Both clinical and associated economic burden may be reduced in effect of a new RSV intervention  
358 program. At this point in time, three preventive measures have been granted market authorization for  
359 the prevention of RSV-LRTI in infants. One monoclonal antibody (mAB), Palivizumab [34, 35], has been  
360 used to prevent severe RSV infections in children at risk since the 1990s and is now being complemented  
361 by a recently approved mAB with a longer half-life (Nirsevimab, [36-38]). The latter has just been  
362 recommended for all infants regardless of their risk status in Germany [39]. While mAbs can protect from  
363 the time of administration, the recently approved maternal vaccine (RSVpreF, [40, 41]) provides  
364 protection immediately from birth, as children are born with protective antibodies that were transferred  
365 by the vaccinated mother during pregnancy.

### 366 Limitations and Implications

367 Using health claims data to analyze clinical and economic burden has numerous strengths, but also several  
368 limitations. First, it is not possible to determine whether an RSV-specific laboratory detection assay was  
369 positive prior to ICD-10 coding, as virological confirmation is not a requirement, and the results of tests  
370 are not available in health claims data. However, RSV-codes (J12.1, J20.5, and J21.0) are usually allocated  
371 after laboratory-confirmed RSV infection in the hospital setting [9]. Second, while the database used in  
372 this study is representative of the population, available SHI databases typically include only ~5% of the  
373 population, capturing many but likely not all cases in contrast to public databases. However, SHI databases

374 have the advantage of more detailed information on patient characteristics like preterm or risk status  
375 which was crucial in this study to assess the burden in the most vulnerable population. Though the number  
376 of patients with such specific characteristics are low. This affects specifically results on mean costs which  
377 are most robust if the sample was large. However, to date this is the best estimation available. That is also  
378 the case for the estimation of excess costs; the best possible procedure for matching patients of such  
379 young age by at least month of life, sex and preterm status to controls was only feasible across healthcare  
380 sectors. As a result only 12% of controls included in the analysis had a hospitalization within 365 days after  
381 the index date of the matched incident patient. This was, however, the best matching procedure possible.  
382 Moreover, we employed an approach – the inclusion of UBP cases during the RSV season – that previous  
383 studies have already used in order to take underreporting due to misdiagnosis into account [e.g., 19, 20].  
384 While overestimation may be a concern to this approach, the number of cases that are added correspond  
385 approximately to the underreporting factor that has previously been suggested for that age group [12].  
386 Also, novel approaches like time-series modeling report even higher incidence rates compared to the  
387 standard estimation employed here [26]. However, for comparability to previous studies [9, 11], we also  
388 report estimates on a narrow case definition based on RSV-specific diagnosis codes only.

### 389 Conclusion

390 This large-scale observational study is the first to provide detailed nation-wide, population-based  
391 epidemiological and economic estimates of the RSV-attributable hospital burden by months of life,  
392 preterm and risk status in Germany. The results show a substantial burden among the youngest children  
393 with RSV infections, right after birth. Although the highest risk of severe RSV was found in children born  
394 prematurely or with an underlying disease, most children who needed to be hospitalized were not at risk  
395 – emphasizing the need for broad protection already at birth.

396 *Acknowledgements:* Medical writing support was provided by Qi Yan, PhD, MS (Pfizer, Inc). We thank  
397 Julia Schiffner-Rohe for valuable discussions throughout the study process.

398

399 References:

- 400 1. Coultas JA, Smyth R, Openshaw PJ. Respiratory syncytial virus (RSV): a scourge from infancy to old age.  
401 Thorax. 2019;74(10):986-93. <https://doi.org/10.1136/thoraxjnl-2018-212212>.
- 402 2. Jha A, Jarvis H, Fraser C, Openshaw PJM. Respiratory Syncytial Virus. In: Hui DS, Rossi GA, Johnston SL,  
403 editors. SARS, MERS and other Viral Lung Infections. Sheffield (UK): European Respiratory Society; 2016.
- 404 3. Barr R, Green CA, Sande CJ, Drysdale SB. Respiratory syncytial virus: diagnosis, prevention and  
405 management. Ther Adv Infect Dis. 2019;6:2049936119865798.  
406 <https://doi.org/10.1177/2049936119865798>.
- 407 4. Cai W, Buda S, Schuler E, Hirve S, Zhang W, Haas W. Risk factors for hospitalized respiratory syncytial  
408 virus disease and its severe outcomes. Influenza Other Respir Viruses. 2020;14(6):658-70.  
409 <https://doi.org/10.1111/irv.12729>.
- 410 5. Sommer C, Resch B, Simões EA. Risk factors for severe respiratory syncytial virus lower respiratory tract  
411 infection. Open J Med Microbiol. 2011;5:144-54. <https://doi.org/10.2174/1874285801105010144>.
- 412 6. Li Y, Wang X, Blau DM, Caballero MT, Feikin DR, Gill CJ, et al. Global, regional, and national disease  
413 burden estimates of acute lower respiratory infections due to respiratory syncytial virus in children  
414 younger than 5 years in 2019: a systematic analysis. Lancet. 2022;399(10340):2047-64.  
415 [https://doi.org/10.1016/s0140-6736\(22\)00478-0](https://doi.org/10.1016/s0140-6736(22)00478-0).
- 416 7. Hall CB, Weinberg GA, Blumkin AK, Edwards KM, Staat MA, Schultz AF, et al. Respiratory syncytial virus-  
417 associated hospitalizations among children less than 24 months of age. Am Acad Pediatr.  
418 2013;132(2):341-8. <https://doi.org/10.1542/peds.2013-0303>.
- 419 8. Jepsen MT, Trebbien R, Emborg HD, Krause TG, Schønning K, Voldstedlund M, et al. Incidence and  
420 seasonality of respiratory syncytial virus hospitalisations in young children in Denmark, 2010 to 2015.  
421 Euro Surveill. 2018;23(3):17-163. <https://doi.org/10.2807/1560-7917.Es.2018.23.3.17-00163>.

- 422 9. Niekler P, Goettler D, Liese JG, Streng A. Hospitalizations due to respiratory syncytial virus (RSV)  
423 infections in Germany: a nationwide clinical and direct cost data analysis (2010-2019). *Infection*. 2023.  
424 <https://doi.org/10.1007/s15010-023-02122-8>.
- 425 10. Hartmann K, Liese JG, Kemmling D, Prifert C, Weißbrich B, Thilakarathne P, et al. Clinical Burden of  
426 Respiratory Syncytial Virus in Hospitalized Children Aged  $\leq 5$  Years (INSPIRE Study). *J Infect Dis*.  
427 2022;226(3):386-95. <https://doi.org/10.1093/infdis/jiac137>.
- 428 11. Wick M, Poshtiban A, Kramer R, Bangert M, Lange M, Wetzke M, et al. Inpatient burden of respiratory  
429 syncytial virus in children  $\leq 2$  years of age in Germany: A retrospective analysis of nationwide  
430 hospitalization data, 2019-2022. *Influenza Other Respir Viruses*. 2023;17(11):e13211.  
431 <https://doi.org/https://10.1111/irv.13211>.
- 432 12. Haeberer M, Bruyndonckx R, Polkowska-Kramek A, Torres A, Liang C, Nuttens C, et al. Estimated  
433 Respiratory Syncytial Virus-Related Hospitalizations and Deaths Among Children and Adults in Spain,  
434 2016-2019. *Infect Dis Ther*. 2024;13(3):463-80. <https://doi.org/10.1007/s40121-024-00920-7>.
- 435 13. Hasegawa K, Goto T, Hirayama A, Laham FR, Mansbach JM, Piedra PA, et al. Respiratory Virus  
436 Epidemiology Among US Infants With Severe Bronchiolitis: Analysis of 2 Multicenter, Multiyear Cohort  
437 Studies. *Pediatr Infect Dis J*. 2019;38(8):e180-e3. <https://doi.org/10.1097/inf.0000000000002279>.
- 438 14. Zhang S, Akmar LZ, Bailey F, Rath BA, Alchikh M, Schweiger B, et al. Cost of Respiratory Syncytial Virus-  
439 Associated Acute Lower Respiratory Infection Management in Young Children at the Regional and Global  
440 Level: A Systematic Review and Meta-Analysis. *J Infect Dis*. 2020;222(Suppl 7):680-7.  
441 <https://doi.org/10.1093/infdis/jiz683>.
- 442 15. Ehlken B, Ihorst G, Lippert B, Rohwedder A, Petersen G, Schumacher M, et al. Economic impact of  
443 community-acquired and nosocomial lower respiratory tract infections in young children in Germany.  
444 *European journal of pediatrics*. 2005;164(10):607-15. <https://doi.org/10.1007/s00431-005-1705-0>.

- 445 16. Gesundheitsforen Leipzig GmbH. German Analysis Database for Evaluation and Health Service Research  
446 [Deutsche Analysedatenbank für Evaluation und Versorgungsforschung]. (2024).  
447 [https://www.gesundheitsforen.net/GFL/Services/Analytik/Gesundheitsforen%20Leipzig\\_DADB\\_Q1%202024.pdf](https://www.gesundheitsforen.net/GFL/Services/Analytik/Gesundheitsforen%20Leipzig_DADB_Q1%202024.pdf). Accessed 2024.
- 449 17. Kiefer A, Pemmerl S, Kabesch M, Ambrosch A. Comparative analysis of RSV-related hospitalisations in  
450 children and adults over a 7 year-period before, during and after the COVID-19 pandemic. *J Clin Virol*.  
451 2023;166:1386-6532. <https://doi.org/https://doi.org/10.1016/j.jcv.2023.105530>.
- 452 18. Cai W, Dürrwald R, Biere B, Schweiger B, Haas W, Wolff T, et al. Determination of respiratory syncytial  
453 virus epidemic seasons by using 95% confidence interval of positivity rates, 2011-2021, Germany.  
454 *Influenza Other Respir Viruses*. 2022;16(5):854-7. <https://doi.org/10.1111/irv.12996>.
- 455 19. Bandeira T, Carmo M, Lopes H, Gomes C, Martins M, Guzman C, et al. Burden and severity of children's  
456 hospitalizations by respiratory syncytial virus in Portugal, 2015-2018. *Influenza Other Respir Viruses*.  
457 2023;17(1):e13066. <https://doi.org/https://10.1111/irv.13066>.
- 458 20. Martínón-Torres F, Carmo M, Platero L, Drago G, López-Belmonte JL, Bangert M, et al. Clinical and  
459 economic burden of respiratory syncytial virus in Spanish children: the BARI study. *BMC Infect Dis*.  
460 2022;22(1):759. <https://doi.org/https://10.1186/s12879-022-07745-0>.
- 461 21. Hamilton MA, Calzavara A, Emerson SD, Djebli M, Sundaram ME, Chan AK, et al. Validating International  
462 Classification of Disease 10th Revision algorithms for identifying influenza and respiratory syncytial virus  
463 hospitalizations. *PLoS One*. 2021;16(1):1-12. <https://doi.org/10.1371/journal.pone.0244746>.
- 464 22. Destatis - Statistisches Bundesamt. 61111-0001 - Verbraucherpreisindex: Deutschland in Jahre. (2023).  
465 <https://www-genesis.destatis.de/genesis//online?operation=table&code=61111-0001&bypass=true&levelindex=0&levelid=1724158016992#abreadcrumb>. Accessed 2024.

- 467 23. Destatis - Statistisches Bundesamt. Geburten - Veränderung der Zahl der Lebendgeborenen zum  
468 jeweiligen Vorjahr. (2024). [https://www.destatis.de/DE/Themen/Gesellschaft-](https://www.destatis.de/DE/Themen/Gesellschaft-Umwelt/Bevoelkerung/Geburten/Tabellen/lebendgeborene-differenz.html)  
469 [Umwelt/Bevoelkerung/Geburten/Tabellen/lebendgeborene-differenz.html](https://www.destatis.de/DE/Themen/Gesellschaft-Umwelt/Bevoelkerung/Geburten/Tabellen/lebendgeborene-differenz.html). Accessed 2024.
- 470 24. The International Epidemiological Association. Good Epidemiological Practice. Guidelines for Proper  
471 Conduct of Epidemiological Research. (2007). <https://ieaweb.org/>. Accessed 2024.
- 472 25. Demont C, Petrica N, Bardoulat I, Duret S, Watier L, Chosidow A, et al. Economic and disease burden of  
473 RSV-associated hospitalizations in young children in France, from 2010 through 2018. BMC Infect Dis.  
474 2021;21(1):730. <https://doi.org/10.1186/s12879-021-06399-8>.
- 475 26. Johannesen CK, van Wijhe M, Tong S, Fernández LV, Heikkinen T, van Boven M, et al. Age-Specific  
476 Estimates of Respiratory Syncytial Virus-Associated Hospitalizations in 6 European Countries: A Time  
477 Series Analysis. J Infect Dis. 2022;226(Suppl 1):29-37. <https://doi.org/10.1093/infdis/jiac150>.
- 478 27. Del Riccio M, Spreuwenberg P, Osei-Yeboah R, Johannesen CK, Fernandez LV, Teirlinck AC, et al.  
479 Burden of Respiratory Syncytial Virus in the European Union: estimation of RSV-associated  
480 hospitalizations in children under 5 years. J Infect Dis. 2023;228(11):1528-38.  
481 <https://doi.org/10.1093/infdis/jiad188>.
- 482 28. Hall CB, Weinberg GA, Iwane MK, Blumkin AK, Edwards KM, Staat MA, et al. The burden of respiratory  
483 syncytial virus infection in young children. N Engl J Med. 2009;360(6):588-98.  
484 <https://doi.org/10.1056/NEJMoa0804877>.
- 485 29. Welliver RC. Review of epidemiology and clinical risk factors for severe respiratory syncytial virus (RSV)  
486 infection. J Pediatr. 2003;143(5 Suppl):112-7. [https://doi.org/10.1067/s0022-3476\(03\)00508-0](https://doi.org/10.1067/s0022-3476(03)00508-0).
- 487 30. Shi T, Vennard S, Mahdy S, Nair H, investigators R. Risk Factors for Poor Outcome or Death in Young  
488 Children With Respiratory Syncytial Virus–Associated Acute Lower Respiratory Tract Infection: A  
489 Systematic Review and Meta-Analysis. J Infect Dis. 2021;226(Supplement\_1):S10-S6.  
490 <https://doi.org/10.1093/infdis/jiaa751>.

- 491 31. Deng S, Cong B, Edgoose M, De Wit F, Nair H, Li Y. Risk factors for respiratory syncytial virus-associated  
492 acute lower respiratory infection in children under 5 years: An updated systematic review and meta-  
493 analysis. *Int J Infect Dis.* 2024;146:1-8. <https://doi.org/10.1016/j.ijid.2024.107125>.
- 494 32. Pickles RJ, DeVincenzo JP. Respiratory syncytial virus (RSV) and its propensity for causing bronchiolitis.  
495 *The Journal of Pathology.* 2015;235(2):266-76. <https://doi.org/10.1002/path.4462>.
- 496 33. Kramer R, Duclos A, Lina B, Casalegno JS. Cost and burden of RSV related hospitalisation from 2012 to  
497 2017 in the first year of life in Lyon, France. *Vaccine.* 2018;36(45):6591-3.  
498 <https://doi.org/10.1016/j.vaccine.2018.09.029>.
- 499 34. European Medicines Agency (EMA) - Science Medicines Health. Synagis - Palivizumab. (2023).  
500 <https://www.ema.europa.eu/en/medicines/human/EPAR/synagis>. Accessed 2024.
- 501 35. The IMpact-RSV Study Group. Palivizumab, a humanized respiratory syncytial virus monoclonal  
502 antibody, reduces hospitalization from respiratory syncytial virus infection in high-risk infants. *The*  
503 *IMpact-RSV Study Group. Pediatrics.* 1998;102(3 Pt 1):531-7.
- 504 36. Hammitt LL, Dagan R, Yuan Y, Baca Cots M, Bosheva M, Madhi SA, et al. Nirsevimab for Prevention of  
505 RSV in Healthy Late-Preterm and Term Infants. *N Engl J Med.* 2022;386(9):837-46.  
506 <https://doi.org/10.1056/NEJMoa2110275>.
- 507 37. Drysdale SB, Cathie K, Flamein F, Knuf M, Collins AM, Hill HC, et al. Nirsevimab for Prevention of  
508 Hospitalizations Due to RSV in Infants. *N Engl J Med.* 2023;389(26):2425-35.  
509 <https://doi.org/10.1056/NEJMoa2309189>.
- 510 38. European Medicines Agency (EMA) - Science Medicines Health. Beyfortus - Nirsevimab. (2024).  
511 <https://www.ema.europa.eu/en/medicines/human/EPAR/beyfortus>. Accessed 2024.
- 512 39. Koch J, Berner R, Flasche S, Günther F, Kwetkat A, Lange B, et al. Beschluss und wissenschaftliche  
513 Begründung zur Empfehlung der STIKO zur spezifischen Prophylaxe von RSV-Erkrankungen mit



514 Nirsevimab bei Neugeborenen und Säuglingen in ihrer 1. RSV-Saison. Epid Bull. 2024(26):3-29.

515 <https://doi.org/10.25646/12198>.

516 40. Kampmann B, Madhi SA, Munjal I, Simões EAF, Pahud BA, Llapur C, et al. Bivalent Prefusion F Vaccine in

517 Pregnancy to Prevent RSV Illness in Infants. N Engl J Med. 2023;388(16):1451-64.

518 <https://doi.org/10.1056/NEJMoa2216480>.

519 41. European Medicines Agency (EMA) - Science Medicines Health. Abrysvo - Respiratory syncytial virus

520 vaccine. (2024). <https://www.ema.europa.eu/en/medicines/human/EPAR/abrysvo>. Accessed 2024.

521

522 **Table 1** Number (n) and characteristics of inpatient cases between 2014-2019 in infants and between  
 523 2015-2019 in toddlers

Characteristic	Infants		Toddlers	
	1-12 months		13-24 months	
	Incidence cohort, n = 5,565	HRU/costs cohort, n = 4,909	Incidence cohort, n = 2,131	HRU/costs cohort, n = 1,730
	n (%)	n (%)	n (%)	n (%)
<b>Age in months</b> (Mean, ±SD)	5.4 (±3.2)	5.2 (±3.2)	17.9 (±3.3)	17.8 (±3.3)
<b>Sex (female)</b>	2,265 (40.7)	2,033 (41.4)	888 (41.7)	723 (41.8)
<b>Episode type</b>				
RSV	3,522 (63.3)	3,223 (65.7)	679 (31.9)	573 (33.1)
UBP	1,859 (33.4)	1,538 (31.3)	1,390 (65.2)	1,112 (64.3)
RSV+UBP	184 (3.3)	148 (3.0)	62 (2.9)	45 (2.6)
<b>Full term status</b>				
full term	4,825 (86.7)	4,313 (87.9)	1,815 (85.2)	1,505 (87.0)
preterm	670 (12.0)	559 (11.4)	272 (12.8)	208 (12.0)
extreme preterm	70 (1.3)	37 (0.8)	44 (2.1)	17 (1.0)
<b>Risk factors</b>				
any risk factor	1,714 (30.8)	1,430 (29.1)	748 (35.1)	547 (31.6)
no risk factor	3,851 (69.2)	3,479 (70.9)	1,383 (64.9)	1,183 (68.4)
<b>ICU stay</b>				
ICU stay	N/A	43 (0.9)	N/A	12 (0.7)
no ICU stay	N/A	4,866 (99.1)	N/A	1,718 (99.3)
<b>Ventilatory support</b>				
ventilatory support	N/A	288 (5.9)	N/A	18 (1.0)
no ventilatory support	N/A	4,621 (94.1)	N/A	1,712 (99.0)

524

525 **Table 2** Case Numbers (N) and Hospital Incidence Rates (IR) per 1,000 Person-Years per Calendar Year in Children ≤ 2 years of age between  
 526 2014-2019

Month of life	2014		2015		2016		2017		2018		2019		2014 – 2019	
	N	IR	N	IR	N	IR	N	IR	N	IR	N	IR	N	IR
<i>RSV-UBP</i>														
1-3	319	41.69	315	41.71	334	43.30	375	47.45	324	41.55	366	49.66	2,033	44.21
4-6	290	37.90	262	34.69	288	37.34	275	34.80	240	30.78	271	36.77	1,626	35.36
7-12	403	26.34	299	19.79	330	21.39	273	17.27	339	21.74	262	17.77	1,906	20.72
1-6	609	39.80	577	38.20	622	40.32	650	41.13	564	36.16	637	43.21	3,659	39.78
1-12	1,012	33.07	876	29.00	952	30.86	923	29.20	903	28.95	899	30.49	5,565	30.25
13-24	NA	NA	399	13.80	521	18.13	323	10.95	463	15.29	425	14.49	2,131	14.52
1-24	NA	NA	1,275	21.57	1,473	24.72	1,246	20.39	1,366	22.22	1,324	22.51	7,696	23.27
<i>RSV-specific</i>														
1-3	237	30.98	243	32.17	260	33.71	313	39.61	264	33.86	318	43.14	1,635	35.55
4-6	174	22.74	169	22.38	204	26.45	214	27.08	158	20.26	213	28.90	1,132	24.62
7-12	156	10.19	147	9.73	146	9.46	147	9.30	174	11.16	169	11.46	939	10.21
1-6	411	26.86	412	27.27	464	30.08	527	33.34	422	27.06	531	36.02	2,767	30.08
1-12	567	18.53	559	18.50	610	19.77	674	21.32	596	19.11	700	23.74	3,706	20.15
13-24	NA	NA	115	3.98	147	5.12	133	4.51	137	4.53	204	6.95	741	5.05
1-24	NA	NA	674	11.40	757	12.70	807	13.20	733	11.93	904	15.37	4,447	13.45

527

528 **Table 3** Case Numbers (N) and Hospital Incidence Rates (IR) per 1000 per person-years between 2014-2019 stratified by Preterm and Risk Status

	Infants			Toddlers		
	DADB*	N	IR	DADB*	N	IR
<i>RSV-UBP</i>						
No risk	154,769	3,851	24.88	120,892	1,383	11.44
Any risk**	29,183	1,714	58.73	25,860	748	28.92
Underlying disease***	17,756	974	54.85	16,698	432	25.87
Full-term	172,525	4,825	27.97	137,590	1,815	13.19
Any preterm	11,427	740	64.76	9,162	316	34.49
Early/late preterm	10,583	670	63.31	8,530	272	31.89
Extreme preterm	844	70	82.94	632	44	69.62
<i>RSV-specific</i>						
No risk	154,769	2,577	16.65	120,892	459	3.80
Any risk**	29,183	1,129	38.69	25,860	282	10.90
Underlying disease	17,756	646	36.38	16,698	166	9.94
Full-term	172,525	3,223	18.68	137,590	625	4.54
Any preterm	11,427	483	42.27	9,162	116	12.66
Early/late preterm	10,583	451	42.62	8,530	96	11.25
Extreme preterm	844	32	37.91	632	20	31.65

*Note: \* DADB base population, \*\* presence of any risk factor including any underlying disease and prematurity; \*\*\* excluding premature cases*

529

530

531 **Table 4** Case Numbers (N), Mean (M) and Standard Deviation (SD) of Direct Costs and Mean Excess Costs  
 532 (in €) in Infants and Toddlers between 2014 – 2019

	Month of life	N	Direct Costs		Excess costs		
			Episode		30 days	90 days	365 days
			M (SD)		M	M	M
<i>RSV-UBP</i>							
	1-3	1,891	4,738 (11,276)		4,028	4,612	5,065
	4-6	1,430	3,248 (6,183)		3,015	3,349	3,763
	7-12	1,588	3,102 (6,048)		2,975	3,571	4,779
	1-12	4,909	3,775 (8,515)		3,392	3,907	4,593
	13-24	1,730	3,062 (5,859)		3,067	3,484	4,285
<i>RSV-specific</i>							
	1-3	1,536	4,792 (10,809)		4,224	4,692	5,000
	4-6	1,029	3,397 (5,215)		3,180	3,477	3,750
	7-12	806	3,349 (3,850)		3,233	3,838	5,483
	1-12	3,371	4,021 (8,096)		3,669	4,117	4,734
	13-24	618	3,641 (5,804)		3,521	3,921	4,722
<i>UBP</i>							
	1-3	355	4,503 (13,112)		3,176	4,268	5,347
	4-6	401	2,866 (8,153)		2,592	3,019	3,796
	7-12	782	2,847 (7,677)		2,709	3,297	4,053
	1-12	1,538	3,234 (9,348)		2,786	3,449	4,285
	13-24	1,112	2,741 (5,868)		2,815	3,241	4,042

533

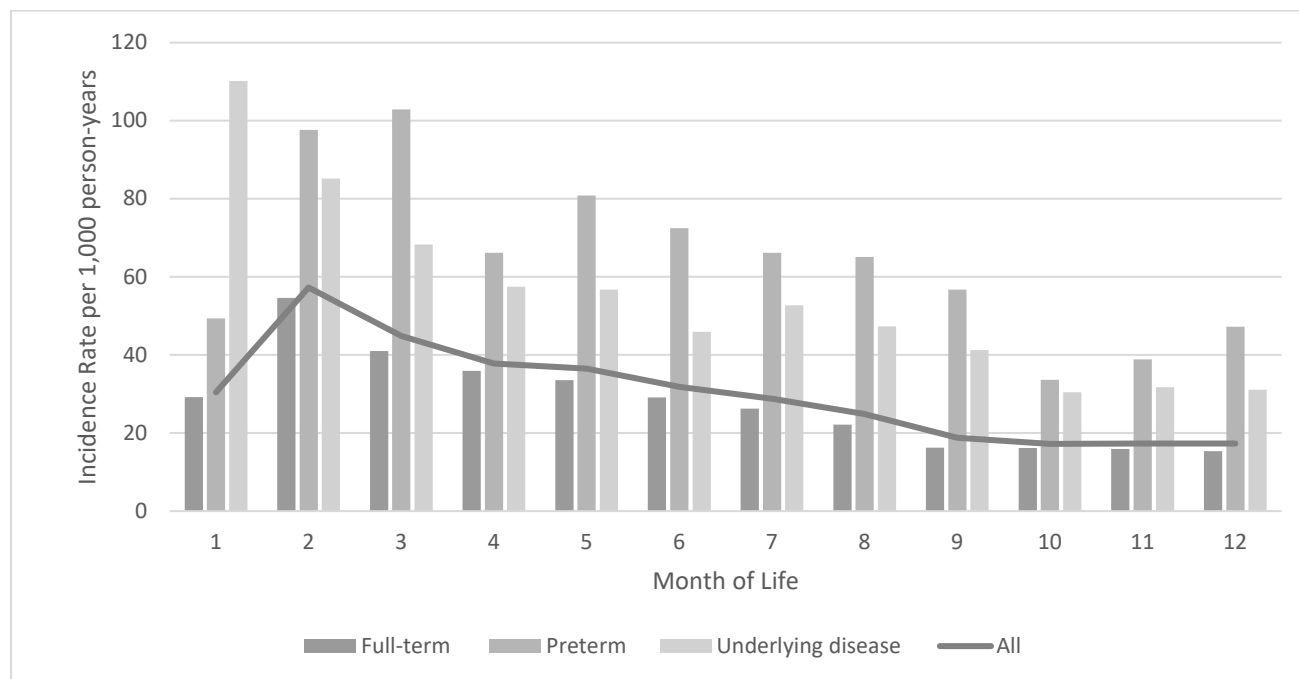
534 **Table 5** Case Numbers (N), Mean (M) and Standard Deviation (SD) of Direct Costs and Mean Excess Costs (in €) by Risk and Preterm Status in  
 535 Infants and Toddlers (2014 – 2019)

	Infants					Toddlers				
	N	Direct Costs	Excess costs			N	Direct Costs	Excess costs		
		Episode	30 days	90 days	395 days		Episode	30 days	90 days	395 days
		M (SD)	M	M	M		M	M	M	M
<i>RSV-UBP</i>										
No risk	3,479	3,019 (4,136)	2,953	3,129	3,623	1,183	2,822 (4,471)	2,871	3,061	3,373
Any risk*	1,430	5,613 (14,235)	4,461	5,801	6,953	547	3,583 (8,066)	3,491	4,398	6,256
Full-term	4,313	3,403 (6,359)	3,287	3,673	4,379	1,505	3,036 (6,105)	3,050	3,435	4,135
Any preterm	596	6,461 (17,228)	4,151	5,604	6,147	225	3,239 (3,839)	3,180	3,813	5,284
Early/late preterm	559	5,630 (14,740)	3,982	5,299	6,107	208	3,174 (3,892)	3,111	3,794	5,333
Extreme preterm	37	19,010 (36,949)	6,694	10,207	6,758	17	4,034 (3,117)	4,034	4,043	4,691
<i>RSV-specific</i>										
No risk	2,385	3,283 (4,884)	3,183	3,387	3,960	399	3,202 (1,714)	3,198	3,313	3,752
Any risk*	986	5,806 (12,729)	4,843	5,881	6,606	219	4,441 (9,433)	4,109	5,027	6,490
Full-term	2,959	3,735 (7,271)	3,581	3,979	4,643	532	3,519 (5,792)	3,415	3,669	4,193
Any preterm	412	6,073 (12,335)	4,300	5,104	5,385	86	4,398 (5,856)	4,178	5,478	7,996
Early/late preterm	394	5,357 (9,924)	4,115	4,555	4,976	79	4,279 (5,980)	4,040	5,447	8,038
Extreme preterm	18	21,750 (33,606)	8,337	17,135	14,320	7	5,743 (4,332)	5,743	5,838	7,525
<i>UBP</i>										
No risk	1,094	2,442 (1,385)	2,451	2,567	2,889	784	2,628 (5,345)	2,705	2,933	3,180
Any risk*	444	5,186 (17,120)	3,613	5,622	7,724	328	3,010 (6,963)	3,079	3,978	6,100
Full-term	1,354	2,678 (3,539)	2,646	3,004	3,800	973	2,772 (6,257)	2,851	3,307	4,104
Any preterm	184	7,328 (24,944)	3,817	6,723	7,854	139	2,522 (1,203)	2,563	2,782	3,606
Early/late preterm	165	6,282 (22,419)	3,665	7,078	8,805	129	2,497 (1,220)	2,542	2,781	3,676
Extreme preterm	19	16,415 (40,611)	5,138	3,644	-406	10	2,838 (948)	2,838	2,787	2,707

Note: \* presence of any risk factor including any underlying disease and prematurity

536

537 **Figure 1** Hospital Incidence Rate per cross stratified by months of life and preterm status, risk status  
538 2014-2019



539

540