

## Supplementary Files to

# Short- and Long-term Outcomes of children hospitalized with COVID-19 or Influenza: results of the AUTCOV study

Christine Wagenlechner<sup>1,2\*</sup>, Ralph Wendt<sup>3\*</sup>, Berthold Reichardt<sup>4</sup>, Michael Mildner<sup>5</sup>, Julia Mascherbauer<sup>6</sup>, Clemens Aigner<sup>2</sup>, Johann Auer<sup>7</sup>, Hendrik Jan Ankersmit<sup>2,8#</sup>, Alexandra Christine Graf<sup>1\*</sup>

<sup>1</sup> Center for Medical Data Science, Medical University of Vienna, Spitalgasse 23, 1090 Vienna, Austria

<sup>2</sup> Clinic of Thoracic Surgery, Medical University of Vienna, Spitalgasse 23, 1090 Vienna, Austria

<sup>3</sup> Department of Nephrology, Hospital St. Georg Leipzig, Delitzscher Street. 141, 04129 Leipzig, Germany

<sup>4</sup> Austrian Social Health Insurance Fund, Siegfried Marcus-Straße 5, 7000 Eisenstadt, Austria.

<sup>5</sup> Clinic of Dermatology, Medical University of Vienna, Spitalgasse 23, 1090 Vienna, Austria

<sup>6</sup> Department of Internal Medicine 3, University Hospital St. Poelten, Dunant-Platz 1, 3100 St. Poelten, Austria

<sup>7</sup> Department of Internal Medicine 1 with Cardiology and Intensive Care, St. Josef Hospital Braunau, Ringstraße 60, 5280 Braunau am Inn, Austria

<sup>8</sup> Laboratory for Cardiac and Thoracic Diagnosis, Regeneration and Applied Immunology, Spitalgasse 23, 1090 Vienna, Austria

# Correspondence to [hendrik.ankersmit@meduniwien.ac.at](mailto:hendrik.ankersmit@meduniwien.ac.at) ; Phone +43 1 40400 67770

\* contributed equally

Note that data regarding adults (patients and controls >18 years of age) of the AUTCOV study are published on medRxiv, see Graf AC., Reichardt B., Wagenlechner C., Krotka P., Traxler-Weidenauer D., Mildner M., Mascherbauer J., Aigner C., Auer J., Wendt R., Ankersmit HJ. “Baseline drug treatments and long-term outcomes in COVID-19 hospitalized patients: results of the 2020 AUTCOV study” (2024), doi: <https://doi.org/10.1101/2024.08.22.24312424>

Definitions of Medications Groups and Outcomes presented in the corresponding supplement also available on medRxiv are therefore similar to them presented below. Presented definitions on medication groups are used for the entire AUTCOV study and its publications.

## Definitions of primary and secondary outcome

This study includes all patients aged 0 to 18 years who were hospitalized in Austria due to the main diagnosis COVID-19 (ICD-10 Codes U071, U072, U049) from 1 January 2020 to 31 December 2021 and Influenza (ICD-10 Codes J09, J100, J101, J108, J110, J111, J118, J10) from 30 December 2015 to 31 December 2021. The patient data were available from the Austrian Health Insurance Funds. The data set includes 1063 COVID-19 patients and 2781 Influenza patients.

For both groups (COVID and INFLUENZA), age-, sex-, and region-matched control groups (approximately 10 controls for each patient) consisted of individuals not hospitalized due to COVID-19 (in the years 2020 and 21) as well as Influenza (in the years 2015 – 2021) were randomly chosen from the population registered in the Austrian Health Insurance Fund, representing the Austrian population. Data on the control group were available from 1 year before the first matched patient was hospitalized until study cut-off. Death dates were available at study cut-off.

**Table S1. Definitions of primary and secondary outcomes**

Outcome	Definition
<b>Hospital Discharge (primary outcome)</b>	Hospital discharge after first COVID-19 or Influenza hospital admission. Time from COVID-19/Influenza hospital admission to hospital discharge.
<b>In-hospital death (secondary outcome)</b>	for patients: death during COVID-19/Influenza index hospital stay: YES/NO for controls: death within the time of COVID-19/Influenza hospital stay of the age-, sex and region-matched COVID-19 patient: YES/NO
<b>All-cause mortality (secondary outcome)</b>	for patients: time from COVID-19/Influenza hospital admission to death or last follow-up for controls: time from COVID-19/Influenza hospital admission of the age-, sex and region-matched COVID-19 patient to death or last follow-up
<b>Readmission due to any reason (secondary outcome)</b>	time from (alive) COVID-19/Influenza hospital discharge to the first hospital admission (due to any reason) after index hospital stay

## Definitions of confounder

For the statistical models separately for COVID-19 and for Influenza patients, the confounder wave was defined as follows:

For COVID-19 patients, the confounder 'wave' indicates the period during which patients were hospitalised for COVID between January to December 2020, January to June 2021 or July to December 2021.

For influenza patients, the confounder 'wave' was specified for rehospitalisation in the categories January 2016 to June 2017, July 2017 to December 2019 and January 2019 to December 2021, and for discharge in the categories January to June 2016, July 2016 to June 2017, July 2017 to June 2018, July 2018 to June 2019, June 2019 to July 2020, July 2020 to June 2021 and July to December 2021.

ATC codes describing prescribed medication were available from the Austrian Health Insurance Funds 1 year before the hospitalisation due to COVID-19 or Influenza. ATC codes for medications before hospitalisation were summarized into medication groups (**Table S2**) using binary variables, which were set to 1 if the patient received at least one medicament from the corresponding medication group at least once in the year before COVID-19 or Influenza hospitalisation. Not all medication groups were considered in the statistical models due to underrepresentation.

**Table S2: Definitions of medication groups**

Medication group	ATC codes
<b>Anticoagulants (MG1)</b>	B01AA01, B01AA02, B01AA03, B01AA04, B01AA07, B01AA08, B01AA09, B01AA10, B01AA11, B01AA12, B01AB01, B01AB02, B01AB04, B01AB05, B01AB06, B01AB07, B01AB08, B01AB09, B01AB10, B01AB11, B01AB12, B01AB51, B01AC01, B01AC02, B01AC03, B01AC04, B01AC05, B01AC06, B01AC07, B01AC08, B01AC09, B01AC10, B01AC11, B01AC13, B01AC14, B01AC15, B01AC16, B01AC17, B01AC18, B01AC19, B01AC21, B01AC22, B01AC23, B01AC24, B01AC25, B01AC27, B01AC30, B01AC56, B01AD01, B01AD02, B01AD03, B01AD04, B01AD05, B01AD06, B01AD07, B01AD08, B01AD09, B01AD10, B01AD11, B01AD12, B01AE01, B01AE02, B01AE03, B01AE04, B01AE05, B01AE06, B01AE07, B01AF01, B01AF02, B01AF03, B01AF04, B01AX01, B01AX04, B01AX05, B01AX06
<b>Antibiotics, antivirals, antiprotozoals, or anthelmintics (MG2)</b>	A07AA01, A07AA02, A07AA03, A07AA04, A07AA05, A07AA06, A07AA07, A07AA08, A07AA09, A07AA10, A07AA11, A07AA12, A07AA13, A07AA51, A07AA54, A07AB02, A07AB03, A07AB04, A07AC01, J01AA01, J01AA02, J01AA03, J01AA04, J01AA05, J01AA06, J01AA07, J01AA08, J01AA09, J01AA10, J01AA11, J01AA12, J01AA13, J01AA14, J01AA15, J01AA20, J01AA56, J01BA01, J01BA02, J01BA52, J01CA01, J01CA02, J01CA03, J01CA04, J01CA05, J01CA06, J01CA07, J01CA08, J01CA09, J01CA10, J01CA11, J01CA12, J01CA13, J01CA14, J01CA15, J01CA16, J01CA17, J01CA18, J01CA19, J01CA20, J01CA51, J01CE01, J01CE02, J01CE03, J01CE04, J01CE05, J01CE06, J01CE07, J01CE08, J01CE09, J01CE10, J01CE30, J01CF01, J01CF02, J01CF03, J01CF04, J01CF05, J01CG01, J01CG02, J01CR01, J01CR02, J01CR03, J01CR04, J01CR05, J01CR50, J01DA01, J01DA02, J01DA03, J01DA04, J01DA05, J01DA06, J01DA07, J01DA08, J01DA09, J01DA10, J01DA11, J01DA12, J01DA13, J01DA14, J01DA15, J01DA16, J01DA17, J01DA18, J01DA19, J01DA21, J01DA22, J01DA23, J01DA24, J01DA25, J01DA26, J01DA27, J01DA30, J01DA31, J01DA32, J01DA33, J01DA34, J01DA35, J01DA36, J01DA37, J01DA38, J01DA39, J01DA40, J01DA41, J01DA42, J01DA63, J01DB01, J01DB02, J01DB03, J01DB04, J01DB05, J01DB06, J01DB07, J01DB08, J01DB09, J01DB10, J01DB11, J01DB12, J01DC01, J01DC02, J01DC03, J01DC04, J01DC05, J01DC06, J01DC07, J01DC08, J01DC09, J01DC10, J01DC11, J01DC12, J01DC13, J01DC14, J01DD01, J01DD02, J01DD03, J01DD04, J01DD05, J01DD06, J01DD07, J01DD08, J01DD09, J01DD10, J01DD11, J01DD12, J01DD13, J01DD14, J01DD15, J01DD16, J01DD18, J01DD52, J01DD54, J01DD62, J01DD63, J01DD64, J01DE01, J01DE02, J01DF01, J01DF02, J01DH02, J01DH03, J01DH04, J01DH06, J01DH51, J01DH52, J01DH55, J01DH56, J01DI01, J01DI02, J01DI04, J01DI54, J01EA01, J01EA02, J01EB01, J01EB02, J01EB03, J01EB04, J01EB05, J01EB06, J01EB07, J01EB08, J01EB20, J01EC01, J01EC02, J01EC03, J01EC20, J01ED01, J01ED02, J01ED03, J01ED04, J01ED05, J01ED06, J01ED07, J01ED08, J01ED09, J01ED20, J01EE01, J01EE02, J01EE03, J01EE04, J01EE05, J01EE06, J01EE07, J01FA01, J01FA02, J01FA03, J01FA05, J01FA06, J01FA07, J01FA08, J01FA09, J01FA10, J01FA11, J01FA12, J01FA13, J01FA14, J01FA15, J01FF01, J01FF02, J01FG01, J01FG02, J01GA01, J01GA02, J01GB01, J01GB03, J01GB04, J01GB05, J01GB06, J01GB07, J01GB08, J01GB09, J01GB10, J01GB11, J01GB12, J01GB13, J01GB14, J01MA01, J01MA02, J01MA03, J01MA04, J01MA05, J01MA06, J01MA07, J01MA08, J01MA09, J01MA10, J01MA11, J01MA12, J01MA13, J01MA14, J01MA15, J01MA16, J01MA17, J01MA18, J01MA19, J01MA21, J01MA22, J01MA23, J01MA24, J01MB01, J01MB02, J01MB03, J01MB04, J01MB05, J01MB06, J01MB07, J01RA01, J01RA02, J01RA03, J01RA04, J01XA01, J01XA02, J01XA03, J01XA04, J01XA05, J01XB01, J01XB02, J01XC01, J01XD01,

	<p>J01XD02, J01XD03, J01XE01, J01XE02, J01XX01, J01XX02, J01XX03, J01XX04, J01XX05, J01XX06, J01XX07, J01XX08, J01XX09, J01XX11, J01XX12, J02AA01, J02AA02, J02AB01, J02AB02, J02AC01, J02AC02, J02AC03, J02AC04, J02AC05, J02AX01, J02AX04, J02AX05, J02AX06, J04AA01, J04AA02, J04AA03, J04AB01, J04AB02, J04AB03, J04AB04, J04AB05, J04AB06, J04AB30, J04AC01, J04AC51, J04AD01, J04AD02, J04AD03, J04AK01, J04AK02, J04AK03, J04AK04, J04AK05, J04AK06, J04AK07, J04AM01, J04AM02, J04AM03, J04AM04, J04AM05, J04AM06, J04AM07, J04AM08, J04BA01, J04BA02, J04BA03, P01AA01, P01AA02, P01AA04, P01AA05, P01AA52, P01AB01, P01AB02, P01AB03, P01AB04, P01AB05, P01AB06, P01AB07, P01AC01, P01AC02, P01AC03, P01AC04, P01AR01, P01AR02, P01AR03, P01AR53, P01AX01, P01AX02, P01AX04, P01AX05, P01AX06, P01AX07, P01AX08, P01AX09, P01AX10, P01AX11, P01AX52, P01BA01, P01BA02, P01BA03, P01BA06, P01BA07, P01BB01, P01BB02, P01BB51, P01BC01, P01BC02, P01BD01, P01BD51, P01BE01, P01BE02, P01BE03, P01BE04, P01BE05, P01BE52, P01BF01, P01BF02, P01BF03, P01BF04, P01BF05, P01BF06, P01BX01, P01CA02, P01CA03, P01CB01, P01CB02, P01CC01, P01CC02, P01CD01, P01CD02, P01CX01, P01CX02, P01CX03, P01CX04, P02BA01, P02BA02, P02BB01, P02BX01, P02BX02, P02BX03, P02BX04, P02CA01, P02CA02, P02CA03, P02CA04, P02CA05, P02CA06, P02CA51, P02CB01, P02CB02, P02CC01, P02CC02, P02CE01, P02CF01, P02CX01, P02CX02, P02CX03, P02DA01, P02DX01, P02DX02, P03AA01, P03AA02, P03AA03, P03AA04, P03AA05, P03AA54, P03AB01, P03AB02, P03AB51, P03AC01, P03AC02, P03AC04, P03AC04, P03AC51, P03AC52, P03AC53, P03AC54, P03AX01, P03AX02, P03AX03, P03AX04, P03AX05, P03BA01, P03BA02, P03BA03, P03BA04, P03BX01, P03BX02, P03BX03, P03BX04, P03BX05, P03BX06</p>
<b>Insulin and other antidiabetics (MG3)</b>	<p>A10AB01, A10AB02, A10AB03, A10AB04, A10AB05, A10AB06, A10AB30, A10AC01, A10AC02, A10AC03, A10AC04, A10AC30, A10AD01, A10AD02, A10AD03, A10AD04, A10AD05, A10AD06, A10AD30, A10AE01, A10AE02, A10AE03, A10AE04, A10AE05, A10AE06, A10AE30, A10AE54, A10AE56, A10AF01, A10BA01, A10BA02, A10BA03, A10BB01, A10BB02, A10BB03, A10BB04, A10BB05, A10BB06, A10BB07, A10BB08, A10BB09, A10BB10, A10BB11, A10BB12, A10BB31, A10BC01, A10BD01, A10BD02, A10BD03, A10BD04, A10BD05, A10BD06, A10BD07, A10BD08, A10BD09, A10BD10, A10BD11, A10BD12, A10BD13, A10BD14, A10BD15, A10BD16, A10BD17, A10BD18, A10BD19, A10BD20, A10BD21, A10BD22, A10BD24, A10BD25, A10BD26, A10BF01, A10BF02, A10BF03, A10BG01, A10BG02, A10BG03, A10BG04, A10BH01, A10BH02, A10BH03, A10BH04, A10BH05, A10BH06, A10BH07, A10BH08, A10BH52, A10BJ01, A10BJ02, A10BJ03, A10BJ04, A10BJ05, A10BJ06, A10BK01, A10BK02, A10BK03, A10BK04, A10BK05, A10BK06, A10BK07, A10BX01, A10BX02, A10BX03, A10BX04, A10BX05, A10BX06, A10BX07, A10BX08, A10BX09, A10BX10, A10BX11, A10BX12, A10BX13, A10BX14, A10XA01</p>
<b>Heart drugs (MG4)</b>	<p>C01AA01, C01AA02, C01AA03, C01AA04, C01AA05, C01AA06, C01AA07, C01AA08, C01AA09, C01AA52, C01AB01, C01AB51, C01AC01, C01AC03, C01AX02, C01BA01, C01BA02, C01BA03, C01BA04, C01BA05, C01BA08, C01BA12, C01BA51, C01BA71, C01BB01, C01BB02, C01BB03, C01BB04, C01BC03, C01BC04, C01BC07, C01BC08, C01BD01, C01BD02, C01BD03, C01BD04, C01BD05, C01BD06, C01BD07, C01BG01, C01BG07, C01BG11, C01CA01, C01CA02, C01CA03, C01CA04, C01CA05, C01CA06, C01CA07, C01CA08, C01CA09, C01CA10, C01CA11, C01CA12, C01CA13, C01CA14, C01CA15, C01CA16, C01CA17, C01CA18, C01CA19, C01CA21, C01CA22, C01CA23, C01CA24, C01CA25, C01CA26, C01CA30, C01CA51, C01CE01, C01CE02, C01CE03, C01CE04, C01CX06, C01CX07, C01CX08, C01CX09, C01DA02, C01DA04, C01DA05, C01DA07, C01DA08, C01DA09, C01DA13, C01DA14, C01DA20, C01DA38, C01DA52, C01DA54, C01DA55, C01DA57, C01DA58, C01DA59, C01DA63, C01DA70, C01DB01, C01DX01, C01DX02, C01DX03, C01DX04, C01DX05, C01DX06, C01DX07, C01DX08, C01DX09, C01DX10, C01DX11, C01DX12, C01DX13, C01DX14, C01DX15, C01DX16, C01DX18, C01DX19, C01DX51, C01DX52, C01DX53, C01DX54, C01EA01, C01EB02, C01EB03, C01EB04, C01EB05, C01EB06, C01EB07, C01EB09, C01EB10, C01EB11, C01EB12, C01EB13, C01EB15, C01EB16, C01EB17, C01EB18, C01EB19, C01EB21</p>
<b>Antihypertensives, including diuretics and renin-angiotensin-aldosterone system inhibitors (MG5)</b>	<p>C02AA01, C02AA02, C02AA03, C02AA04, C02AA05, C02AA06, C02AA07, C02AA52, C02AA53, C02AA57, C02AB01, C02AB02, C02AC01, C02AC02, C02AC04, C02AC05, C02AC06, C02BA01, C02BB01, C02CA01, C02CA02, C02CA03, C02CA04, C02CA06, C02CA08, C02CC01, C02CC02, C02CC03, C02CC04, C02CC05, C02CC06, C02CC07, C02DA01, C02DB01, C02DB02, C02DB03, C02DB04, C02DC01, C02DD01, C02DG01, C02KA01, C02KB01, C02KC01, C02KD01, C02KX01, C02KX02, C02KX03, C02KX04, C02KX05, C02KX52, C02LA01, C02LA02, C02LA03, C02LA04, C02LA07, C02LA08, C02LA09, C02LA50, C02LA51, C02LA52, C02LA71, C02LB01, C02LC01, C02LC05, C02LC51, C02LE01, C02LF01, C02LG01, C02LG02, C02LG03, C02LG51, C02LG73, C02LK01, C02LL01, C02LX01, C03AA01, C03AA02, C03AA03, C03AA04, C03AA05, C03AA06, C03AA07, C03AA08, C03AA09, C03AA13, C03AB01, C03AB02, C03AB03, C03AB04, C03AB05, C03AB06, C03AB07, C03AB08, C03AB09, C03AH01, C03AH02, C03AX01, C03BA02, C03BA03, C03BA04, C03BA05, C03BA07, C03BA08, C03BA09, C03BA10, C03BA11, C03BA12, C03BA13, C03BA82, C03BB02, C03BB03, C03BB04,</p>

	C03BB05, C03BB07, C03BC01, C03BD01, C03BX03, C03CA01, C03CA02, C03CA03, C03CA04, C03CB01, C03CB02, C03CC01, C03CC02, C03CD01, C03CX01, C03DA01, C03DA02, C03DA03, C03DA04, C03DB01, C03DB02, C03EA01, C03EA02, C03EA03, C03EA04, C03EA05, C03EA06, C03EA07, C03EA12, C03EA13, C03EA14, C03EB01, C03EB02, C08CA01, C08CA02, C08CA03, C08CA04, C08CA05, C08CA06, C08CA07, C08CA08, C08CA09, C08CA10, C08CA11, C08CA12, C08CA13, C08CA14, C08CA15, C08CA16, C08CA51, C08CA55, C08CX01, C08DA01, C08DA02, C08DA51, C08DB01, C08EA01, C08EA02, C08EX01, C08EX02, C08GA01, C08GA02, C09AA01, C09AA02, C09AA03, C09AA04, C09AA05, C09AA06, C09AA07, C09AA08, C09AA09, C09AA10, C09AA11, C09AA12, C09AA13, C09AA14, C09AA15, C09AA16, C09BA01, C09BA02, C09BA03, C09BA04, C09BA05, C09BA06, C09BA07, C09BA08, C09BA09, C09BA12, C09BA13, C09BA15, C09BB02, C09BB03, C09BB04, C09BB05, C09BB06, C09BB07, C09BB10, C09BB12, C09BX01, C09BX03, C09BX04, C09BX05, C09CA01, C09CA02, C09CA03, C09CA04, C09CA05, C09CA06, C09CA07, C09CA08, C09CA09, C09DA01, C09DA02, C09DA03, C09DA04, C09DA06, C09DA07, C09DA08, C09DA10, C09DB01, C09DB02, C09DB04, C09DB05, C09DB06, C09DB07, C09DB09, C09DX01, C09DX02, C09DX03, C09DX04, C09DX05, C09DX06, C09DX07, C09XA01, C09XA02, C09XA52, C09XA53, C09XA54
<b>Beta-blockers (MG6)</b>	C07AA01, C07AA02, C07AA03, C07AA05, C07AA06, C07AA07, C07AA12, C07AA14, C07AA15, C07AA16, C07AA17, C07AA19, C07AA23, C07AA27, C07AA57, C07AB01, C07AB02, C07AB03, C07AB04, C07AB05, C07AB06, C07AB07, C07AB08, C07AB09, C07AB10, C07AB11, C07AB12, C07AB13, C07AB14, C07AB52, C07AG01, C07AG02, C07BA02, C07BA05, C07BA06, C07BA07, C07BA12, C07BA68, C07BB02, C07BB03, C07BB04, C07BB06, C07BB07, C07BB12, C07BB52, C07BG01, C07CA02, C07CA03, C07CA17, C07CA23, C07CB02, C07CB03, C07CB53, C07CG01, C07DA06, C07DB01, C07FA05, C07FB02, C07FB03, C07FB07, C07FB13, C07FX01, C07FX02, C07FX03, C07FX04, C07FX05, C07FX06
<b>Statins, fibrates, including proprotein convertase subtilisin/kexin type 9 inhibitors and inclisiran (MG7)</b>	C10AA01, C10AA02, C10AA03, C10AA04, C10AA05, C10AA06, C10AA07, C10AA08, C10AA51, C10AA52, C10AA53, C10AA55, C10AB01, C10AB02, C10AB03, C10AB04, C10AB05, C10AB06, C10AB07, C10AB08, C10AB09, C10AB10, C10AB11, C10AX06, C10AX07, C10AX08, C10AX09, C10AX10, C10AX11, C10AX12, C10AX13, C10AX14, C10AX15, C10AX16, C10BA01, C10BA02, C10BA03, C10BA04, C10BA05, C10BA06, C10BA07, C10BA08, C10BA09, C10BA10, C10BX01, C10BX02, C10BX03, C10BX04, C10BX05, C10BX06, C10BX07, C10BX08, C10BX09, C10BX10, C10BX11, C10BX12, C10BX13, C10BX14, C10BX15, C10BX16, C10BX17, C10BX18
<b>Immunosuppressants and immunomodulators (MG8)</b>	D11AH05, L04AA01, L04AA02, L04AA03, L04AA04, L04AA05, L04AA06, L04AA08, L04AA09, L04AA10, L04AA11, L04AA12, L04AA13, L04AA14, L04AA15, L04AA16, L04AA17, L04AA18, L04AA19, L04AA21, L04AA22, L04AA23, L04AA24, L04AA25, L04AA26, L04AA27, L04AA28, L04AA29, L04AA31, L04AA32, L04AA33, L04AA34, L04AA36, L04AA37, L04AA38, L04AA39, L04AA40, L04AA41, L04AA42, L04AA43, L04AA44, L04AA45, L04AA46, L04AB01, L04AB02, L04AB03, L04AB04, L04AB05, L04AB06, L04AB07, L04AC01, L04AC02, L04AC03, L04AC04, L04AC05, L04AC06, L04AC07, L04AC08, L04AC09, L04AC10, L04AC11, L04AC12, L04AC13, L04AC14, L04AC15, L04AC16, L04AC17, L04AC18, L04AC19, L04AD01, L04AD02, L04AD03, L04AX01, L04AX02, L04AX03, L04AX04, L04AX05, L04AX06, L04AX07, L04AX08
<b>Systemic steroids (MG9)</b>	H02AA01, H02AA02, H02AA03, H02AB01, H02AB02, H02AB03, H02AB04, H02AB05, H02AB06, H02AB07, H02AB08, H02AB09, H02AB10, H02AB11, H02AB12, H02AB13, H02AB14, H02AB15, H02AB17, H02BX01, H02CA01, H02CA02, H02CA03
<b>Chemotherapy (MG10)</b>	L01AA01, L01AA02, L01AA03, L01AA05, L01AA06, L01AA07, L01AA08, L01AA09, L01AB01, L01AB02, L01AB03, L01AC01, L01AC02, L01AC03, L01AD01, L01AD02, L01AD03, L01AD04, L01AD05, L01AD06, L01AD07, L01AD08, L01AG01, L01AX01, L01AX02, L01AX03, L01AX04, L01BA01, L01BA03, L01BA04, L01BB02, L01BB03, L01BB04, L01BB05, L01BB06, L01BB07, L01BC01, L01BC02, L01BC03, L01BC04, L01BC05, L01BC06, L01BC07, L01BC08, L01BC09, L01BC52, L01BC53, L01BC59, L01CA01, L01CA02, L01CA03, L01CA04, L01CA05, L01CB01, L01CB02, L01CC01, L01CD01, L01CD02, L01CD03, L01CD04, L01CE01, L01CE02, L01CE03, L01CE04, L01CX01, L01DA01, L01DB01, L01DB02, L01DB03, L01DB04, L01DB05, L01DB06, L01DB07, L01DB08, L01DB09, L01DB10, L01DB11, L01DC01, L01DC02, L01DC03, L01DC04, L01EA01, L01EA02, L01EA03, L01EA04, L01EA05, L01EB01, L01EB02, L01EB03, L01EB04, L01EB05, L01EB07, L01EB08, L01EC01, L01EC02, L01EC03, L01ED01, L01ED02, L01ED03, L01ED04, L01ED05, L01EE01, L01EE02, L01EE03, L01EF01, L01EF02, L01EF03, L01EG01, L01EG02, L01EH01, L01EH02, L01EJ01, L01EJ02, L01EK01, L01EK03, L01EL01, L01EL02, L01EM01, L01EM02, L01EM03, L01EX01, L01EX02, L01EX03, L01EX04, L01EX05, L01EX07, L01EX08, L01EX09, L01EX10, L01EX11, L01EX12, L01EX13, L01EX14, L01XA01, L01XA02, L01XA03, L01XA04, L01XA05, L01XB01, L01XC01, L01XC02, L01XC03, L01XC04, L01XC05, L01XC06, L01XC07, L01XC08, L01XC09, L01XC10, L01XC11, L01XC12, L01XC13, L01XC14, L01XC15, L01XC16, L01XC17, L01XC18, L01XC19, L01XC21, L01XC22, L01XC23, L01XC24, L01XC25, L01XC26, L01XC27, L01XC28, L01XC29, L01XC31, L01XC32, L01XC33, L01XC34, L01XC35, L01XC36, L01XC37, L01XC38, L01XC39, L01XC40, L01XC41, L01XD01, L01XD02, L01XD03, L01XD04, L01XD05, L01XD06

	L01XD07, L01XE01, L01XE02, L01XE03, L01XE04, L01XE05, L01XE06, L01XE07, L01XE08, L01XE09, L01XE10, L01XE11, L01XE12, L01XE13, L01XE14, L01XE15, L01XE16, L01XE17, L01XE18, L01XE21, L01XE23, L01XE24, L01XE25, L01XE26, L01XE27, L01XE28, L01XE29, L01XE31, L01XE33, L01XE34, L01XE35, L01XE36, L01XE37, L01XE38, L01XE39, L01XE41, L01XE42, L01XE43, L01XE44, L01XE45, L01XE46, L01XE47, L01XE48, L01XE50, L01XE51, L01XE52, L01XE53, L01XE54, L01XE56, L01XE57, L01XF01, L01XF02, L01XF03, L01XG01, L01XG02, L01XG03, L01XH01, L01XH02, L01XH03, L01XH05, L01XJ01, L01XJ02, L01XJ03, L01XK01, L01XK02, L01XK03, L01XK04, L01XX01, L01XX02, L01XX03, L01XX05, L01XX07, L01XX08, L01XX09, L01XX10, L01XX11, L01XX14, L01XX16, L01XX17, L01XX18, L01XX19, L01XX22, L01XX23, L01XX24, L01XX25, L01XX27, L01XX28, L01XX29, L01XX31, L01XX32, L01XX33, L01XX34, L01XX35, L01XX36, L01XX37, L01XX38, L01XX39, L01XX40, L01XX41, L01XX42, L01XX43, L01XX44, L01XX45, L01XX46, L01XX47, L01XX48, L01XX50, L01XX51, L01XX52, L01XX53, L01XX54, L01XX55, L01XX56, L01XX57, L01XX58, L01XX59, L01XX60, L01XX61, L01XX62, L01XX63, L01XX64, L01XX65, L01XX66, L01XX67, L01XX68, L01XX70, L01XX71, L01XY01, L01XY02, L02AA01, L02AA02, L02AA03, L02AA04, L02AB01, L02AB02, L02AB03, L02AE01, L02AE02, L02AE03, L02AE04, L02AE05, L02AE51, L02BA01, L02BA02, L02BA03, L02BB01, L02BB02, L02BB03, L02BB04, L02BB05, L02BB06, L02BG01, L02BG02, L02BG03, L02BG04, L02BG05, L02BG06, L02BX01, L02BX02, L02BX03
<b>Iron supplements, erythropoietic stimulating agents, vitamin B12, folic acid (MG11)</b>	B03AA01, B03AA02, B03AA03, B03AA04, B03AA05, B03AA06, B03AA07, B03AA08, B03AA09, B03AA10, B03AA11, B03AA12, B03AB01, B03AB02, B03AB03, B03AB04, B03AB05, B03AB06, B03AB07, B03AB08, B03AB09, B03AB10, B03AC01, B03AC02, B03AC03, B03AC05, B03AC06, B03AC07, B03AD01, B03AD02, B03AD03, B03AD04, B03AD05, B03AE01, B03AE02, B03AE03, B03AE04, B03AE10, B03BA01, B03BA02, B03BA03, B03BA04, B03BA05, B03BA51, B03BA53, B03BB01, B03BB51, B03XA01, B03XA02, B03XA03, B03XA05, B03XA06
<b>Antacids, including antihistamines (MG12)</b>	A02BB01, A02BB02, A02BC01, A02BC02, A02BC03, A02BC04, A02BC05, A02BC06, A02BC08
<b>Vitamin D and other vitamin supplements (MG13)</b>	A11CA01, A11CA02, A11CC01, A11CC02, A11CC03, A11CC04, A11CC05, A11CC06, A11CC07, A11CC20, A11CC55, A11DA01, A11DA02, A11DA03, A11GA01, A11GB01, A11HA01, A11HA02, A11HA03, A11HA04, A11HA05, A11HA06, A11HA07, A11HA08, A11HA30, A11HA31, A11HA32
<b>Caplacizumab (MG14)</b>	B01AX07
<b>Systemic hemostatics (MG15)</b>	B02BX01, B02BX02, B02BX03, B02BX04, B02BX05, B02BX06, B02BX07, B02BX08, B02BX09
<b>Hereditary angioedema therapeutics (MG16)</b>	B06AC01, B06AC02, B06AC03, B06AC04, B06AC05
<b>Peripheral vasodilators (MG17)</b>	C04AA01, C04AA02, C04AA31, C04AB01, C04AB02, C04AC01, C04AC02, C04AC03, C04AC07, C04AD01, C04AD02, C04AD03, C04AD04, C04AE01, C04AE02, C04AE04, C04AE51, C04AE54, C04AF01, C04AX01, C04AX02, C04AX07, C04AX10, C04AX11, C04AX13, C04AX17, C04AX19, C04AX20, C04AX21, C04AX23, C04AX24, C04AX26, C04AX27, C04AX28, C04AX30, C04AX32
<b>Hormonal contraceptives and similar hormone preparations (MG18)</b>	G03AA01, G03AA02, G03AA03, G03AA04, G03AA05, G03AA06, G03AA07, G03AA08, G03AA09, G03AA10, G03AA11, G03AA12, G03AA13, G03AA14, G03AA15, G03AA16, G03AA17, G03AB01, G03AB02, G03AB03, G03AB04, G03AB05, G03AB06, G03AB07, G03AB08, G03AB09, G03AC01, G03AC02, G03AC03, G03AC04, G03AC05, G03AC06, G03AC07, G03AC08, G03AC09, G03AC10, G03AD01, G03AD02, G03BA01, G03BA02, G03BA03, G03BB01, G03BB02, G03CA01, G03CA03, G03CA04, G03CA06, G03CA07, G03CA09, G03CA53, G03CA57, G03CB01, G03CB02, G03CB03, G03CB04, G03CC02, G03CC03, G03CC04, G03CC05, G03CC06, G03CC07, G03CX01, G03DA01, G03DA02, G03DA03, G03DA04, G03DB01, G03DB02, G03DB03, G03DB04, G03DB05, G03DB06, G03DB07, G03DB08, G03DC01, G03DC02, G03DC03, G03DC04, G03DC05, G03DC06, G03DC31, G03EA01, G03EA02, G03EA03, G03EK01, G03FA01, G03FA02, G03FA03, G03FA04, G03FA05, G03FA06, G03FA07, G03FA08, G03FA09, G03FA10, G03FA11, G03FA12, G03FA13, G03FA14, G03FA15, G03FA16, G03FA17, G03FB01, G03FB02, G03FB03, G03FB04, G03FB05, G03FB06, G03FB07, G03FB08, G03FB09, G03FB10, G03FB11, G03GA01, G03GA02, G03GA03, G03GA04, G03GA05, G03GA06, G03GA07, G03GA08, G03GA09, G03GA10, G03GA30, G03GB01, G03GB02, G03GB03, G03HA01, G03HB01, G03XA01, G03XA02, G03XB01, G03XB02, G03XC01, G03XC02, G03XC03, G03XX01
<b>Immunoglobulins (MG19)</b>	J06BA01, J06BA02
<b>Interferons and CSF (MG20)</b>	L03AA02, L03AA03, L03AA09, L03AA10, L03AA12, L03AA13, L03AA14, L03AA16, L03AA17, L03AB01, L03AB02, L03AB03, L03AB04, L03AB05, L03AB06, L03AB07, L03AB08, L03AB09, L03AB10, L03AB11, L03AB12, L03AB13, L03AB15, L03AB60, L03AB61, L03AC01, L03AC02, L03AX01, L03AX02, L03AX03, L03AX04, L03AX05, L03AX07, L03AX08, L03AX09, L03AX10, L03AX11, L03AX12, L03AX13, L03AX14, L03AX15, L03AX16, L03AX17, L03AX21

<b>NSAID and other anti-inflammatory drugs (MG21)</b>	M01AA01, M01AA02, M01AA03, M01AA05, M01AA06, M01AB01, M01AB02, M01AB03, M01AB04, M01AB05, M01AB06, M01AB07, M01AB08, M01AB09, M01AB10, M01AB11, M01AB12, M01AB13, M01AB14, M01AB15, M01AB16, M01AB17, M01AB51, M01AB55, M01AC01, M01AC02, M01AC04, M01AC05, M01AC06, M01AC56, M01AE01, M01AE02, M01AE03, M01AE04, M01AE05, M01AE06, M01AE07, M01AE08, M01AE09, M01AE10, M01AE11, M01AE12, M01AE13, M01AE14, M01AE15, M01AE16, M01AE17, M01AE18, M01AE51, M01AE52, M01AE53, M01AE56, M01AG01, M01AG02, M01AG03, M01AG04, M01AH01, M01AH02, M01AH03, M01AH04, M01AH05, M01AH06, M01AH07, M01AX01, M01AX02, M01AX04, M01AX05, M01AX07, M01AX12, M01AX13, M01AX14, M01AX17, M01AX18, M01AX21, M01AX22, M01AX23, M01AX24, M01AX25, M01AX26, M01AX68, M01BA01, M01BA02, M01BA03, M01CA03, M01CB01, M01CB02, M01CB03, M01CB04, M01CB05, M01CC01, M01CC02
<b>Gout medications (MG22)</b>	M04AA01, M04AA02, M04AA03, M04AA51, M04AB01, M04AB02, M04AB03, M04AB04, M04AB05, M04AC01, M04AC02, M04AX01
<b>Antiepileptics (MG23)</b>	N03AA01, N03AA02, N03AA03, N03AA04, N03AA30, N03AB01, N03AB02, N03AB03, N03AB04, N03AB05, N03AB52, N03AB54, N03AC01, N03AC02, N03AC03, N03AD01, N03AD02, N03AD03, N03AD51, N03AE01, N03AF01, N03AF02, N03AF03, N03AF04, N03AG01, N03AG02, N03AG03, N03AG04, N03AG05, N03AG06, N03AX03, N03AX07, N03AX09, N03AX10, N03AX11, N03AX12, N03AX13, N03AX14, N03AX15, N03AX16, N03AX17, N03AX18, N03AX21, N03AX22, N03AX23, N03AX24, N03AX30
<b>Antipsychotics (MG24)</b>	N05AA01, N05AA02, N05AA03, N05AA04, N05AA05, N05AA06, N05AB01, N05AB02, N05AB03, N05AB04, N05AB05, N05AB06, N05AB07, N05AB08, N05AB09, N05AB10, N05AC01, N05AC02, N05AC03, N05AC04, N05AD01, N05AD02, N05AD03, N05AD04, N05AD05, N05AD06, N05AD07, N05AD08, N05AD09, N05AE01, N05AE02, N05AE03, N05AE04, N05AF01, N05AF02, N05AF03, N05AF04, N05AF05, N05AG01, N05AG02, N05AG03, N05AH01, N05AH02, N05AH03, N05AH04, N05AH05, N05AH06, N05AK01, N05AL01, N05AL02, N05AL03, N05AL04, N05AL05, N05AL06, N05AL07, N05AN01, N05AX07, N05AX08, N05AX09, N05AX10, N05AX11, N05AX12, N05AX13, N05AX14, N05AX15, N05BA01, N05BA02, N05BA03, N05BA04, N05BA05, N05BA06, N05BA07, N05BA08, N05BA09, N05BA10, N05BA11, N05BA12, N05BA13, N05BA14, N05BA15, N05BA16, N05BA17, N05BA18, N05BA19, N05BA21, N05BA22, N05BA23, N05BA56, N05BB01, N05BB02, N05BB51, N05BC01, N05BC03, N05BC51, N05BC52, N05BD01, N05BE01, N05BX01, N05BX02, N05BX03, N05BX05, N05CA01, N05CA02, N05CA03, N05CA04, N05CA05, N05CA06, N05CA07, N05CA08, N05CA09, N05CA10, N05CA11, N05CA12, N05CA15, N05CA16, N05CA19, N05CA20, N05CA21, N05CA22, N05CB01, N05CB02, N05CC01, N05CC02, N05CC03, N05CC04, N05CC05, N05CD01, N05CD02, N05CD03, N05CD04, N05CD05, N05CD06, N05CD07, N05CD08, N05CD09, N05CD10, N05CD11, N05CD12, N05CD13, N05CD14, N05CE01, N05CE02, N05CE03, N05CF01, N05CF02, N05CF03, N05CF04, N05CH01, N05CH02, N05CM01, N05CM02, N05CM03, N05CM04, N05CM05, N05CM06, N05CM07, N05CM08, N05CM09, N05CM10, N05CM11, N05CM12, N05CM13, N05CM15, N05CM16, N05CM17, N05CM18, N05CM19, N05CX01, N05CX02, N05CX03, N05CX04, N05CX05, N05CX06, N06AA01, N06AA02, N06AA03, N06AA04, N06AA05, N06AA06, N06AA07, N06AA08, N06AA09, N06AA10, N06AA11, N06AA12, N06AA13, N06AA14, N06AA15, N06AA16, N06AA17, N06AA18, N06AA19, N06AA21, N06AA23, N06AB02, N06AB03, N06AB04, N06AB05, N06AB06, N06AB07, N06AB08, N06AB09, N06AB10, N06AF01, N06AF02, N06AF03, N06AF04, N06AF05, N06AF06, N06AG02, N06AG03, N06AX01, N06AX02, N06AX03, N06AX04, N06AX05, N06AX06, N06AX07, N06AX08, N06AX09, N06AX10, N06AX11, N06AX12, N06AX13, N06AX14, N06AX15, N06AX16, N06AX17, N06AX18, N06AX19, N06AX21, N06AX22, N06AX23, N06AX24, N06AX25, N06AX26, N06AX27, N06BA01, N06BA02, N06BA03, N06BA04, N06BA05, N06BA06, N06BA07, N06BA08, N06BA09, N06BA10, N06BA11, N06BA12, N06BA14, N06BC01, N06BC02, N06BX01, N06BX02, N06BX03, N06BX04, N06BX05, N06BX06, N06BX07, N06BX08, N06BX09, N06BX10, N06BX11, N06BX12, N06BX13, N06BX14, N06BX15, N06BX16, N06BX17, N06BX18, N06BX21, N06CA01, N06CA02, N06DA01, N06DA02, N06DA03, N06DA04, N06DA52, N06DX01, N06DX02
<b>Rhinological and throat antiseptics (MG25)</b>	R01AA02, R01AA03, R01AA04, R01AA05, R01AA06, R01AA07, R01AA08, R01AA09, R01AA10, R01AA11, R01AA12, R01AA13, R01AA14, R01AB01, R01AB02, R01AB03, R01AB05, R01AB06, R01AB07, R01AB08, R01AC01, R01AC02, R01AC03, R01AC04, R01AC05, R01AC06, R01AC07, R01AC08, R01AC51, R01AD01, R01AD02, R01AD03, R01AD04, R01AD05, R01AD06, R01AD07, R01AD08, R01AD09, R01AD11, R01AD12, R01AD13, R01AD52, R01AD53, R01AD57, R01AD58, R01AD60, R01AX01, R01AX02, R01AX03, R01AX05, R01AX06, R01AX07, R01AX08, R01AX09, R01AX10, R01AX30, R01BA01, R01BA02, R01BA03, R01BA51, R01BA52, R01BA53, R02AA01, R02AA02, R02AA03, R02AA05, R02AA06, R02AA09, R02AA10, R02AA11, R02AA12, R02AA13, R02AA14, R02AA15, R02AA16, R02AA17, R02AA18, R02AA19, R02AA20, R02AB01, R02AB02, R02AB03, R02AB04, R02AB30, R02AD01, R02AD02, R02AD03, R02AD04, R02AX01, R02AX03
<b>Inhaled anti-obstructive drugs (MG26)</b>	R03AA01, R03AB02, R03AB03, R03AC02, R03AC03, R03AC04, R03AC05, R03AC06, R03AC07, R03AC08, R03AC09, R03AC10, R03AC11, R03AC12, R03AC13, R03AC14,

	R03AC15, R03AC16, R03AC17, R03AC18, R03AC19, R03AK01, R03AK02, R03AK03, R03AK04, R03AK05, R03AK06, R03AK07, R03AK08, R03AK09, R03AK10, R03AK11, R03AK13, R03AK14, R03AL01, R03AL02, R03AL03, R03AL04, R03AL05, R03AL06, R03AL07, R03AL08, R03AL09, R03AL10, R03AL11, R03AL12, R03BB01, R03BB02, R03BB03, R03BB04, R03BB05, R03BB06, R03BB07, R03BB08, R03BC01, R03BC03, R03BX01, R03CA02, R03CB01, R03CB02, R03CB03, R03CB51, R03CB53, R03CC02, R03CC03, R03CC04, R03CC05, R03CC06, R03CC07, R03CC08, R03CC09, R03CC10, R03CC11, R03CC12, R03CC13, R03CC14, R03CC53, R03CC63, R03DA01, R03DA02, R03DA03, R03DA04, R03DA05, R03DA06, R03DA07, R03DA08, R03DA09, R03DA10, R03DA11, R03DA12, R03DA20, R03DA51, R03DA54, R03DA55, R03DA57, R03DA74, R03DB01, R03DB02, R03DB03, R03DB04, R03DB05, R03DB06
<b>Inhaled steroids (MG27)</b>	R03BA01, R03BA02, R03BA03, R03BA04, R03BA05, R03BA06, R03BA07, R03BA08, R03BA09
<b>Other COPD drugs (MG28)</b>	R03DC01, R03DC02, R03DC03, R03DC04, R03DX01, R03DX02, R03DX03, R03DX05, R03DX06, R03DX07, R03DX08, R03DX09, R03DX10
<b>Cold and cough preparations (MG29)</b>	R05CA01, R05CA02, R05CA03, R05CA04, R05CA05, R05CA06, R05CA07, R05CA08, R05CA09, R05CA10, R05CA11, R05CA12, R05CA13, R05CB01, R05CB02, R05CB03, R05CB04, R05CB05, R05CB06, R05CB07, R05CB08, R05CB09, R05CB10, R05CB11, R05CB12, R05CB13, R05CB14, R05CB15, R05CB16, R05DA01, R05DA03, R05DA04, R05DA05, R05DA06, R05DA07, R05DA08, R05DA09, R05DA10, R05DA11, R05DA12, R05DA20, R05DB01, R05DB02, R05DB03, R05DB04, R05DB05, R05DB07, R05DB09, R05DB10, R05DB11, R05DB12, R05DB13, R05DB14, R05DB15, R05DB16, R05DB17, R05DB18, R05DB19, R05DB20, R05DB21, R05DB22, R05DB23, R05DB24, R05DB25, R05DB26, R05DB27, R05DB28, R05FA01, R05FA02, R05FB01, R05FB02
<b>Systemic antihistamines (MG30)</b>	R06AA01, R06AA02, R06AA04, R06AA06, R06AA07, R06AA08, R06AA09, R06AA52, R06AA54, R06AA56, R06AA57, R06AA59, R06AB01, R06AB02, R06AB03, R06AB04, R06AB05, R06AB06, R06AB07, R06AB51, R06AB52, R06AB54, R06AB56, R06AC01, R06AC02, R06AC03, R06AC04, R06AC05, R06AC06, R06AC52, R06AC53, R06AD01, R06AD02, R06AD03, R06AD04, R06AD05, R06AD06, R06AD07, R06AD08, R06AD09, R06AD52, R06AD55, R06AE01, R06AE03, R06AE04, R06AE05, R06AE06, R06AE07, R06AE09, R06AE51, R06AE53, R06AE55, R06AX01, R06AX02, R06AX03, R06AX04, R06AX05, R06AX07, R06AX08, R06AX09, R06AX11, R06AX12, R06AX13, R06AX15, R06AX16, R06AX17, R06AX18, R06AX19, R06AX21, R06AX22, R06AX23, R06AX24, R06AX25, R06AX26, R06AX27, R06AX28, R06AX29, R06AX53, R06AX58



## Comparison of medication groups to control population

Tables S3 and S4 show the numbers and percentages of patients receiving at least one medication of the corresponding medication group in the year before index hospitalization, separately for COVID-hospitalized patients (S3), Influenza-hospitalized patients (S4) with their respectively age-, sex- and region- matched controls.

**Table S3: Medication Groups for COVID-19 hospitalized children as compared to controls**

Medication Groups	COVID (n = 1063)		Control (n = 10626)		p-value
	No: n (%)	Yes: n(%)	No: n (%)	Yes: n (%)	
MG 1: Anticoagulants	1044 (98.21)	19 (1.79)	10559 (99.37)	67 (0.63)	<0.001
MG 2: Antibiotics, Antivirals, Antiprotozoals or Anthelmintics	832 (78.27)	231 (21.73)	8941 (84.14)	1685 (15.86)	<0.001
MG 3: Insulins and other Antidiabetics	1060 (99.72)	3 (0.28)	10619 (99.93)	7 (0.07)	0.0554
MG 4: "heart" drugs	1059 (99.62)	4 (0.38)	10585 (99.61)	41 (0.39)	1
MG 5: Antihypertensives incl. Diuretics and Renin-angiotensin-aldosterone system inhibitors	1058 (99.53)	5 (0.47)	10619 (99.93)	7 (0.07)	0.0028
MG 6: Beta Blockers	1060 (99.72)	3 (0.28)	10619 (99.93)	7 (0.07)	0.0554
MG 7: Statins, Fibrates incl. Proprotein convertase subtilisin/kexin type 9 inhibitors and Inclisiran	1062 (99.91)	1 (0.09)	10626 (100)	0 (0.0)	0.0909
MG 8: Immunosuppressants and Immunomodulators	1053 (99.06)	10 (0.94)	10615 (99.9)	11 (0.1)	<0.001
MG 9: Systemic Steroids	1041 (97.93)	22 (2.07)	10573 (99.5)	53 (0.5)	<0.001
MG 10: Chemotherapy	1053 (99.06)	10 (0.94)	10622 (99.96)	4 (0.04)	<0.001
MG 11: Iron supplements, Erythropoietic stimulating agents, Vitamin B12, folic acid	1050 (98.78)	13 (1.22)	10591 (99.67)	35 (0.33)	<0.001
MG 12: Antacids incl. Antihistamines	1036 (97.46)	27 (2.54)	10587 (99.63)	39 (0.37)	<0.001
MG 13: Vitamin D and other Vitamin supplements	1019 (95.86)	44 (4.14)	10488 (98.7)	138 (1.3)	<0.001
MG 14: Caplacizumab	1063 (100)	0 (0.0)	10626 (100)	0 (0.0)	1
MG 15: Systemic Hemostatics	1063 (100)	0 (0.0)	10626 (100)	0 (0.0)	1
MG 16: Hereditary angioedema Therapeutics	1063 (100)	0 (0.0)	10626 (100)	0 (0.0)	1
MG 17: Peripheral Vasodilators	1063 (100)	0 (0.0)	10626 (100)	0 (0.0)	1
MG 18: Hormonal contraceptives and similar hormone preparations	1054 (99.15)	9 (0.85)	10557 (99.35)	69 (0.65)	0.4278
MG 19: Immunoglobulins	1058 (99.53)	5 (0.47)	10626 (100)	0 (0.0)	<0.001
MG 20: Interferons and CSF	1056 (99.34)	7 (0.66)	10588 (99.64)	38 (0.36)	0.185
MG 21: NSAR and other anti-inflammatory drugs	992 (93.32)	71 (6.6)	10358 (97.48)	268 (2.52)	<0.001
MG 22: Gout medications	1063 (100)	0 (0.0)	10624 (99.98)	2 (0.02)	1
MG 23: Antiepileptics	1037 (97.55)	26 (2.45)	10591 (99.67)	35 (0.33)	<0.001
MG 24: Antipsychotics	1017 (95.67)	46 (4.33)	10505 (98.86)	121 (1.14)	<0.001
MG 25: Rhinological and throat antiseptics	999 (93.98)	64 (6.02)	10249 (96.45)	377 (3.55)	<0.001
MG 26: inhaled anti-obstructive drugs	1017 (95.67)	46 (4.33)	10462 (98.46)	164 (1.54)	<0.001
MG 27: inhaled steroids	1030 (96.9)	33 (3.1)	10456 (98.4)	170 (1.6)	0.0012
MG 28: other COPD drugs	1053 (99.06)	10 (0.94)	10588 (99.64)	38 (0.36)	0.0099
MG 29: Cold and Cough preparations	1031 (96.99)	32 (3.01)	10480 (98.63)	146 (1.37)	<0.001
MG 30: Systemic Antihistamines	1033 (97.18)	30 (2.82)	10393 (97.81)	233 (2.19)	0.1922

**Table S4: Medication Groups for Influenza-hospitalized children as compared to controls**

Medication Groups	Influenza (n = 2781)		Control (n = 27634)		p-value
	No: n (%)	Yes: n(%)	No: n (%)	Yes: n (%)	
<b>MG 1: Anticoagulants</b>	2765 (99.42)	16 (0.58)	27578 (99.8)	56 (0.2)	<0.001
<b>MG 2: Antibiotics, Antivirals, Antiprotozoals or Anthelmintics</b>	1632 (58.68)	1149 (41.32)	19902 (72.02)	7732 (27.98)	<0.001
<b>MG 3: Insulins and other Antidiabetics</b>	2772 (99.68)	9 (0.32)	27618 (99.94)	16 (0.06)	<0.001
<b>MG 4: "heart" drugs</b>	2773 (99.71)	8 (0.29)	27584 (99.82)	50 (0.18)	0.2474
<b>MG 5: Antihypertensives incl. Diuretics and Renin-angiotensin-aldosterone system inhibitors</b>	2770 (99.6)	11 (0.4)	27626 (99.97)	8 (0.03)	<0.001
<b>MG 6: Beta Blockers</b>	2779 (99.93)	2 (0.07)	27627 (99.97)	7 (0.03)	0.196
<b>MG 7: Statins, Fibrates incl. Proprotein convertase subtilisin/kexin type 9 inhibitors and Inclisiran</b>	2780 (99.96)	1 (0.04)	27630 (99.99)	4 (0.01)	0.3809
<b>MG 8: Immunosuppressants and Immunomodulators</b>	2769 (99.57)	12 (0.43)	27620 (99.95)	14 (0.05)	<0.001
<b>MG 9: Systemic Steroids</b>	2734 (98.31)	47 (1.69)	27495 (99.5)	139 (0.5)	<0.001
<b>MG 10: Chemotherapy</b>	2774 (99.75)	7 (0.25)	27630 (99.99)	4 (0.01)	<0.001
<b>MG 11: Iron supplements, Erythropoietic stimulating agents, Vitamin B12, folic acid</b>	2758 (99.17)	23 (0.83)	27533 (99.63)	101 (0.37)	<0.001
<b>MG 12: Antacids incl. Antihistamines</b>	2744 (98.67)	37 (1.33)	27563 (99.74)	71 (0.26)	<0.001
<b>MG 13: Vitamin D and other Vitamin supplements</b>	2700 (97.09)	81 (2.91)	27188 (98.39)	446 (1.61)	<0.001
<b>MG 14: Caplacizumab</b>	2781 (100)	0 (0.0)	27634 (100)	0 (0.0)	1
<b>MG 15: Systemic Hemostatics</b>	2781 (100)	0 (0.0)	27634 (100)	0 (0.0)	1
<b>MG 16: Hereditary angioedema Therapeutics</b>	2781 (100)	0 (0.0)	27634 (100)	0 (0.0)	1
<b>MG 17: Peripheral Vasodilators</b>	2780 (99.96)	1 (0.04)	27633 (100)	1 (0)	0.1745
<b>MG 18: Hormonal contraceptives and similar hormone preparations</b>	2754 (99.03)	27 (0.97)	27388 (99.11)	246 (0.89)	0.6725
<b>MG 19: Immunoglobulins</b>	2778 (99.89)	3 (0.11)	27634 (100)	0 (0.0)	<0.001
<b>MG 20: Interferons and CSF</b>	2748 (98.81)	33 (1.19)	27388 (99.11)	246 (0.89)	0.1177
<b>MG 21: NSAR and other anti-inflammatory drugs</b>	2599 (93.46)	182 (6.54)	26452 (95.72)	1182 (4.28)	<0.001
<b>MG 22: Gout medications</b>	2779 (99.93)	2 (0.07)	27633 (100)	1 (0.0)	0.0235
<b>MG 23: Antiepileptics</b>	2711 (97.48)	70 (2.52)	27583 (99.82)	51 (0.18)	<0.001
<b>MG 24: Antipsychotics</b>	2677 (96.26)	104 (3.74)	27387 (99.11)	247 (0.89)	<0.001
<b>MG 25: Rhinological and throat antiseptics</b>	2568 (92.34)	213 (7.66)	26269 (95.06)	1365 (4.94)	<0.001
<b>MG 26: inhaled anti-obstructive drugs</b>	2589 (93.1)	192 (6.9)	26892 (97.31)	742 (2.69)	<0.001
<b>MG 27: inhaled steroids</b>	2588 (93.06)	193 (6.94)	26544 (96.06)	1090 (3.94)	<0.001
<b>MG 28: other COPD drugs</b>	2719 (97.77)	62 (2.23)	27195 (98.41)	439 (1.59)	0.0151
<b>MG 29: Cold and Cough preparations</b>	2657 (95.54)	124 (4.46)	26883 (97.28)	751 (2.72)	<0.001
<b>MG 30: Systemic Antihistamines</b>	2652 (95.36)	129 (4.64)	26703 (96.63)	931 (3.37)	<0.001

## Outcome: Time to hospital discharge

Tables S5 and S6 show the results of the simple and multivariable Cox-Regression models to evaluate associations between medication groups and hospital discharge, separately for COVID-hospitalized children (S5) and Influenza-hospitalized children (S6). Note that all confounder with a  $p < 0.1$  in the simple models were further investigated in the multivariable model.

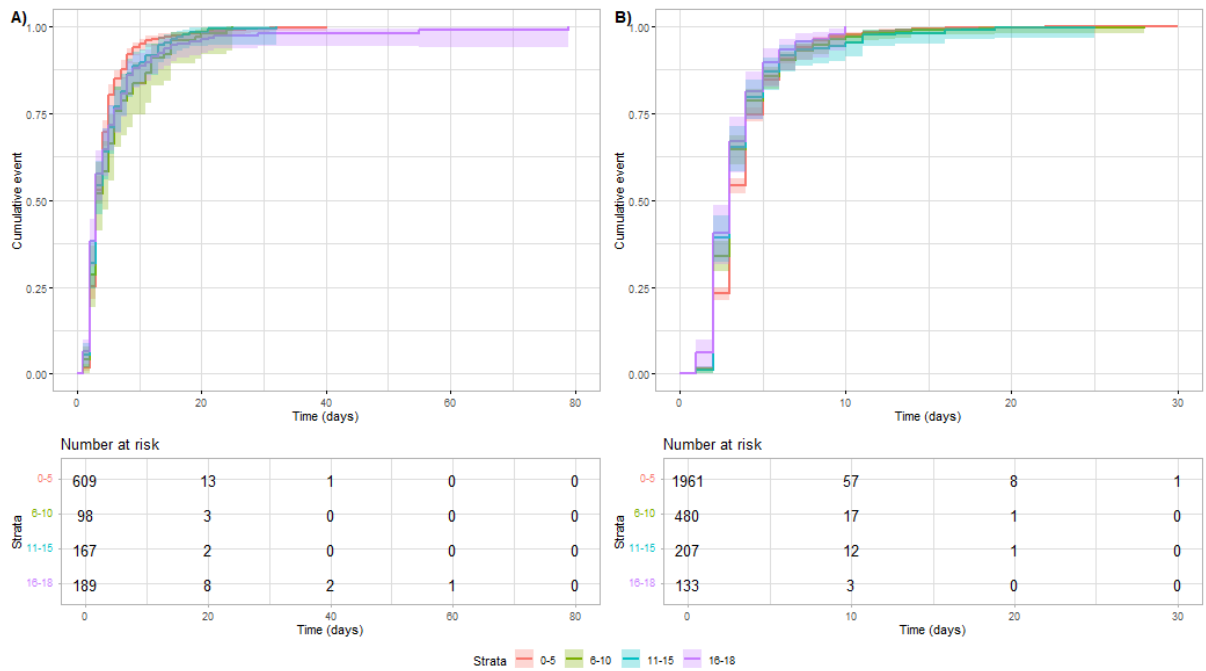
**Table S5: Results of simple and multivariable Cox models for hospital discharge after COVID-19 hospitalisation**

Confounder	Simple		Multivariable	
	HR (CI)	p-value	HR (CI)	p-value
Age Group: 6-10 (ref: 0-5)	0.85 (0.80-0.91)	<0.001	0.84 (0.78-0.91)	<0.001
Age Group: 11-15 (ref: 0-5)	0.96 (0.89-1.04)	0.3016	0.96 (0.91-1.01)	0.0963
Age Group: 16-18 (ref: 0-5)	0.91 (0.76-1.09)	0.3028	0.90 (0.75-1.09)	0.2782
Sex: W (ref: M)	1.12 (0.99-1.26)	0.0759	1.12 (0.97-1.29)	0.1323
Number Medication groups: 1 (ref: 0)	1.00 (0.94-1.07)	0.9775	1.01 (0.87-1.17)	0.9035
Number Medication groups: >=2 (ref: 0)	0.76 (0.63-0.91)	0.0026	0.95 (0.74-1.23)	0.7160
Wave	1.10 (1.02-1.19)	0.0111	1.12 (1.05-1.21)	0.0011
Wave	1.08 (0.95-1.23)	0.2255	1.11 (0.97-1.28)	0.1230
Anticoagulants: Yes (ref: No)	0.67 (0.35-1.28)	0.2257		
Antibiotics, Antivirals, Antiprotozoals or Anthelmintics: Yes (ref: No)	1.18 (0.97-1.42)	0.0910	1.04 (0.84-1.30)	0.6975
Insulins and other Antidiabetics: Yes (ref: No)	0.41 (0.11-1.61)	0.2027		
"heart" drugs: Yes (ref: No)	0.37 (0.13-1.00)	0.0511	0.79 (0.25-2.46)	0.6819
Antihypertensives incl. Diuretics and Renin-angiotensin-aldosterone system inhibitors: Yes (ref: No)	0.29 (0.10-0.84)	0.0225	0.58 (0.18-1.91)	0.3711
Immunosuppressants and Immunomodulators: Yes (ref: No)	0.86 (0.55-1.34)	0.4973		
Systemic Steroids: Yes (ref: No)	0.88 (0.69-1.12)	0.2850		
Chemotherapy: Yes (ref: No)	0.69 (0.44-1.06)	0.0880	0.85 (0.46-1.58)	0.6044
Iron supplements, Erythropoietic stimulating agents, Vitamin B12, folic acid: Yes (ref: No)	0.40 (0.23-0.69)	<0.001	0.43 (0.25-0.73)	0.0019
Antacids incl. Antihistamines: Yes (ref: No)	0.61 (0.46-0.80)	<0.001	0.89 (0.70-1.13)	0.3273
Vitamin D and other Vitamin supplements: Yes (ref: No)	0.67 (0.59-0.75)	<0.001	0.82 (0.74-0.92)	<0.001
Hormonal contraceptives and similar hormone preparations: Yes (ref: No)	1.07 (0.65-1.77)	0.7796		
Interferons and CSF: Yes (ref: No)	0.62 (0.45-0.85)	0.0030	0.69 (0.56-0.85)	<0.001
NSAR and other anti-inflammatory drugs: Yes (ref: No)	1.00 (0.74-1.35)	0.9924		
Antiepileptics: Yes (ref: No)	0.47 (0.37-0.60)	<0.001	0.58 (0.41-0.80)	<0.001
Antipsychotics: Yes (ref: No)	0.71 (0.49-1.04)	0.0782	0.85 (0.60-1.21)	0.3644
Rhinological and throat antiseptics: Yes (ref: No)	1.18 (1.08-1.30)	<0.001	1.15 (1.01-1.31)	0.0289
inhaled anti-obstructive drugs: Yes (ref: No)	0.92 (0.73-1.16)	0.4709		
inhaled steroids: Yes (ref: No)	1.34 (0.99-1.80)	0.0551	1.31 (1.00-1.72)	0.0489
other COPD drugs: Yes (ref: No)	0.75 (0.40-1.40)	0.3688		
Cold and Cough preparations: Yes (ref: No)	1.02 (0.74-1.42)	0.8942		
Systemic Antihistamines: Yes (ref: No)	1.16 (0.82-1.65)	0.3905		

**Table S6: Results of simple and multivariable Cox models for hospital discharge after Influenza hospitalisation**

Confounder	Simple		Multivariable	
	HR (CI)	p-value	HR (CI)	p-value
Age Group: 6-10 (ref: 0-5)	1.16 (1.09-1.24)	<0.001	1.23 (1.14-1.32)	<0.001
Age Group: 11-15 (ref: 0-5)	1.21 (1.01-1.46)	0.0409	1.31 (1.06-1.61)	0.0120
Age Group: 16-18 (ref: 0-5)	1.46 (1.22-1.75)	<0.001	1.54 (1.28-1.86)	<0.001
Sex: W (ref: M)	0.97 (0.89-1.05)	0.4395	0.97 (0.89-1.06)	0.4474
Number Medication groups: 1 (ref: 0)	0.89 (0.80-0.99)	0.0272	0.91 (0.81-1.01)	0.0817
Number Medication groups: >=2 (ref: 0)	0.63 (0.54-0.73)	<0.001	0.80 (0.69-0.93)	0.0029
Wave	1.27 (1.05-1.54)	0.0158	1.26 (1.01-1.58)	0.0428
Wave	1.28 (1.11-1.48)	<0.001	1.29 (1.10-1.51)	0.0016
Wave	1.34 (1.11-1.61)	0.0027	1.32 (1.08-1.62)	0.0069
Wave	1.46 (1.23-1.73)	<0.001	1.45 (1.21-1.74)	<0.001
Wave	NA	NA	NA (NA-NA)	NA
Wave	0.83 (0.57-1.21)	0.3305	0.83 (0.54-1.28)	0.4058
Anticoagulants: Yes (ref: No)	0.93 (0.51-1.70)	0.8205		
Antibiotics, Antivirals, Antiprotozoals or Anthelmintics: Yes (ref: No)	1.02 (0.88-1.18)	0.8297		
Insulins and other Antidiabetics: Yes (ref: No)	1.26 (0.76-2.10)	0.3700		
"heart" drugs: Yes (ref: No)	2.07 (1.06-4.04)	0.0334	1.77 (0.90-3.49)	0.1005
Antihypertensives incl. Diuretics and Renin-angiotensin-aldosterone system inhibitors: Yes (ref: No)	0.45 (0.21-0.94)	0.0331	0.62 (0.36-1.07)	0.0880
Immunosuppressants and Immunomodulators: Yes (ref: No)	0.55 (0.26-1.16)	0.1156		
Systemic Steroids: Yes (ref: No)	0.88 (0.63-1.23)	0.4662		
Chemotherapy: Yes (ref: No)	0.67 (0.60-0.75)	<0.001	0.61 (0.42-0.88)	0.0075
Iron supplements, Erythropoietic stimulating agents, Vitamin B12, folic acid: Yes (ref: No)	0.72 (0.34-1.53)	0.3986		
Antacids incl. Antihistamines: Yes (ref: No)	0.45 (0.31-0.66)	<0.001	0.51 (0.38-0.68)	<0.001
Vitamin D and other Vitamin supplements: Yes (ref: No)	0.75 (0.67-0.84)	<0.001	0.76 (0.66-0.87)	<0.001
Hormonal contraceptives and similar hormone preparations: Yes (ref: No)	0.97 (0.80-1.18)	0.7767		
Interferons and CSF: Yes (ref: No)	1.16 (0.92-1.48)	0.2097		
NSAR and other anti-inflammatory drugs: Yes (ref: No)	0.99 (0.89-1.10)	0.9071		
Antiepileptics: Yes (ref: No)	0.51 (0.40-0.64)	<0.001	0.55 (0.45-0.68)	<0.001
Antipsychotics: Yes (ref: No)	0.73 (0.58-0.92)	0.0076	0.91 (0.77-1.06)	0.2273
Rhinological and throat antiseptics: Yes (ref: No)	0.89 (0.81-0.97)	0.0084	0.91 (0.79-1.04)	0.1703
inhaled anti-obstructive drugs: Yes (ref: No)	0.84 (0.71-1.00)	0.0476	0.89 (0.77-1.02)	0.0957
inhaled steroids: Yes (ref: No)	0.99 (0.82-1.19)	0.8866		
other COPD drugs: Yes (ref: No)	1.12 (0.96-1.32)	0.1559		
Cold and Cough preparations: Yes (ref: No)	1.13 (0.92-1.38)	0.2609		
Systemic Antihistamines: Yes (ref: No)	1.03 (0.79-1.33)	0.8412		

**Figure S1: Kaplan-Meier curves and corresponding 95% confidence intervals for probability of hospital-discharge by age group within COVID-hospitalised (A) and Influenza-hospitalized (B) children.**



**Figure S2: Kaplan-Meier curves and corresponding 95% confidence intervals for probability of hospital-discharge for the number of medication groups within COVID- hospitalised (A) and Influenza-hospitalized (B) children.**

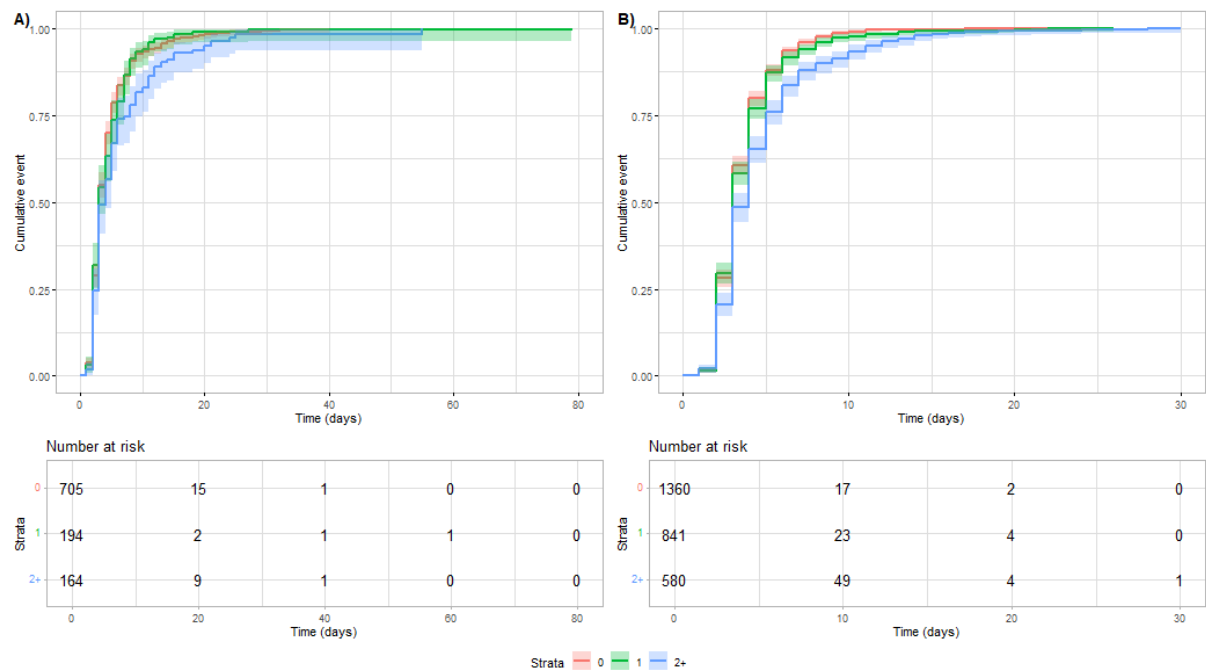


Table S7 shows the results of the simple and multivariable Cox-Regression models to evaluate associations between propensity score matched COVID-hospitalized children and Influenza-hospitalized children. Note that all confounder with a  $p < 0.1$  in the simple models were further investigated in the multivariable model.

**Table S7: Results of the simple and multivariable Cox regression models to compare COVID-19 and Influenza patients for hospital discharge.**

	Simple		Multivariable	
	HR (CI)	p-value	HR (CI)	p-value
<b>Group: Flu (ref: Covid)</b>	1.23 (0.95-1.57)	0.111	1.22 (0.97-1.55)	0.0928
<b>Age Group: 6-10 (ref: 0-5)</b>	1.05 (0.92-1.21)	0.4523	1.05 (0.91-1.22)	0.4993
<b>Age Group: 11-15 (ref: 0-5)</b>	1.09 (0.95-1.24)	0.2256	1.09 (0.94-1.27)	0.2335
<b>Age Group: 16-18 (ref: 0-5)</b>	1.22 (1.04-1.45)	0.0172	1.22 (1.00-1.49)	0.0551
<b>Sex: W (ref: M)</b>	1.00 (0.92-1.08)	0.9293	1.00 (0.92-1.10)	0.9235
<b>Number Medication groups: 1 (ref: 0)</b>	0.86 (0.76-0.97)	0.0129	0.89 (0.78-1.01)	0.0712
<b>Number Medication groups: &gt;=2 (ref: 0)</b>	0.73 (0.60-0.90)	0.0032	0.83 (0.62-1.12)	0.2267
<b>Anticoagulants: Yes (ref: No)</b>	1.61 (0.82-3.14)	0.1668		
<b>Antibiotics, Antivirals, Antiprotozoals or Anthelmintics: Yes (ref: No)</b>	1.06 (0.95-1.17)	0.3104		
<b>Insulins and other Antidiabetics: Yes (ref: No)</b>	2.13 (0.78-5.77)	0.1384		
<b>"heart" drugs: Yes (ref: No)</b>	0.90 (0.55-1.46)	0.6624		
<b>Antihypertensives incl. Diuretics and Renin-angiotensin-aldosterone system inhibitors: Yes (ref: No)</b>	0.48 (0.28-0.84)	0.0102	0.84 (0.42-1.68)	0.6174
<b>Immunosuppressants and Immunomodulators: Yes (ref: No)</b>	0.81 (0.43-1.54)	0.5221		
<b>Systemic Steroids: Yes (ref: No)</b>	0.87 (0.69-1.10)	0.255		
<b>Chemotherapy: Yes (ref: No)</b>	NA	NA		
<b>Iron supplements, Erythropoietic stimulating agents, Vitamin B12, folic acid: Yes (ref: No)</b>	1.06 (0.66-1.70)	0.8139		
<b>Antacids incl. Antihistamines: Yes (ref: No)</b>	0.53 (0.42-0.67)	0	0.76 (0.58-1.01)	0.0544
<b>Vitamin D and other Vitamin supplements: Yes (ref: No)</b>	0.69 (0.57-0.83)	0.0001	0.70 (0.58-0.86)	0.0005
<b>Hormonal contraceptives and similar hormone preparations: Yes (ref: No)</b>	1.14 (0.73-1.79)	0.5604		
<b>Interferons and CSF: Yes (ref: No)</b>	0.82 (0.53-1.25)	0.3509		
<b>NSAR and other anti-inflammatory drugs: Yes (ref: No)</b>	0.95 (0.71-1.28)	0.7531		
<b>Antiepileptics: Yes (ref: No)</b>	0.48 (0.32-0.73)	0.0006	0.51 (0.27-0.97)	0.0413
<b>Antipsychotics: Yes (ref: No)</b>	0.91 (0.71-1.18)	0.4781		
<b>Rhinological and throat antiseptics: Yes (ref: No)</b>	1.03 (0.97-1.09)	0.3588		
<b>inhaled anti-obstructive drugs: Yes (ref: No)</b>	1.00 (0.63-1.59)	0.9995		
<b>inhaled steroids: Yes (ref: No)</b>	1.33 (0.95-1.84)	0.092	1.25 (0.92-1.70)	0.1567
<b>other COPD drugs: Yes (ref: No)</b>	0.65 (0.48-0.89)	0.0076	0.63 (0.47-0.84)	0.0017
<b>Cold and Cough preparations: Yes (ref: No)</b>	0.90 (0.77-1.05)	0.1699		
<b>Systemic Antihistamines: Yes (ref: No)</b>	1.37 (1.07-1.75)	0.014	1.23 (0.96-1.58)	0.107

## Outcome: Readmission due to any reason after hospital discharge

Tables S8 shows the numbers and percentages of patients with and without readmission, separately for COVID-hospitalized patients, Influenza-hospitalized patients with their respectively age-, sex- and region- matched controls.

Tables S9 shows the numbers and percentages of patients with and without readmission, for COVID-hospitalized patients and Influenza-hospitalized patients before and after propensity score matching.

**Table S8: Readmission for COVID-19 and Influenza hospitalized children as compared to controls before propensity score matching**

			COVID				Influenza			
			COVID (all)		Controls (all)		Influenza (all)		Controls (all)	
			No	Yes	No	Yes	No	Yes	No	Yes
Sex	Age	Time	n (%)	n (%)	n (%)	n (%)	n (%)	n (%)	n (%)	n (%)
Male	0-5	30-day	325 (96.15)	13 (3.85)	3322 (98.49)	51 (1.51)	1021 (96.14)	41 (3.86)	10458 (99.17)	87 (0.83)
		180-day	311 (92.01)	27 (7.99)	3225 (95.61)	148 (4.39)	916 (86.25)	146 (13.75)	10175 (96.49)	370 (3.51)
		1-year	298 (88.17)	40 (11.83)	3179 (94.25)	194 (5.75)	839 (79)	223 (21)	9894 (93.83)	651 (6.17)
		1.5-year	298 (88.17)	40 (11.83)	3168 (93.92)	205 (6.08)	839 (79)	223 (21)	9656 (91.57)	889 (8.43)
	6-10	30-day	40 (95.24)	2 (4.76)	429 (99.77)	1 (0.23)	257 (95.19)	13 (4.81)	2690 (99.59)	11 (0.41)
		180-day	33 (78.57)	9 (21.43)	424 (98.6)	6 (1.4)	233 (86.3)	37 (13.7)	2666 (98.7)	35 (1.3)
		1-year	31 (73.81)	11 (26.19)	420 (97.67)	10 (2.33)	213 (78.89)	57 (21.11)	2632 (97.45)	69 (2.55)
		1.5-year	31 (73.81)	11 (26.19)	418 (97.21)	12 (2.79)	213 (78.89)	57 (21.11)	2591 (95.93)	110 (4.07)
	11-15	30-day	75 (94.94)	4 (5.06)	804 (99.5)	4 (0.5)	112 (96.55)	4 (3.45)	1159 (99.91)	1 (0.09)
		180-day	66 (83.54)	13 (16.46)	796 (98.51)	12 (1.49)	100 (86.21)	16 (13.79)	1145 (98.71)	15 (1.29)
		1-year	66 (83.54)	13 (16.46)	793 (98.14)	15 (1.86)	91 (78.45)	25 (21.55)	1128 (97.24)	32 (2.76)
		1.5-year	66 (83.54)	13 (16.46)	793 (98.14)	15 (1.86)	91 (78.45)	25 (21.55)	1112 (95.86)	48 (4.14)
	16-18	30-day	61 (91.04)	6 (8.96)	691 (99.14)	6 (0.86)	58 (92.06)	5 (7.94)	627 (99.84)	1 (0.16)
		180-day	58 (86.57)	9 (13.43)	680 (97.56)	17 (2.44)	51 (80.95)	12 (19.05)	618 (98.41)	10 (1.59)
		1-year	55 (82.09)	12 (17.91)	676 (96.99)	21 (3.01)	48 (76.19)	15 (23.81)	605 (96.34)	23 (3.66)
		1.5-year	55 (82.09)	12 (17.91)	675 (96.84)	22 (3.16)	48 (76.19)	15 (23.81)	597 (95.06)	31 (4.94)
Female	0-5	30-day	256 (96.24)	10 (3.76)	2695 (99.26)	20 (0.74)	862 (96.1)	35 (3.9)	8826 (99.17)	74 (0.83)
		180-day	243 (91.35)	23 (8.65)	2637 (97.13)	78 (2.87)	797 (88.85)	100 (11.15)	8652 (97.21)	248 (2.79)
		1-year	236 (88.72)	30 (11.28)	2609 (96.1)	106 (3.9)	743 (82.83)	154 (17.17)	8468 (95.15)	432 (4.85)
		1.5-year	236 (88.72)	30 (11.28)	2606 (95.99)	109 (4.01)	742 (82.72)	155 (17.28)	8356 (93.89)	544 (6.11)
	6-10	30-day	53 (94.64)	3 (5.36)	558 (99.64)	2 (0.36)	199 (96.6)	7 (3.4)	2087 (99.81)	4 (0.19)
		180-day	49 (87.5)	7 (12.5)	556 (99.29)	4 (0.71)	184 (89.32)	22 (10.68)	2067 (98.85)	24 (1.15)
		1-year	49 (87.5)	7 (12.5)	556 (99.29)	4 (0.71)	173 (83.98)	33 (16.02)	2046 (97.85)	45 (2.15)
		1.5-year	49 (87.5)	7 (12.5)	556 (99.29)	4 (0.71)	173 (83.98)	33 (16.02)	2026 (96.89)	65 (3.11)
	11-15	30-day	80 (93.02)	6 (6.98)	854 (99.53)	4 (0.47)	84 (92.31)	7 (7.69)	907 (99.78)	2 (0.22)
		180-day	71 (82.56)	15 (17.44)	843 (98.25)	15 (1.75)	74 (81.32)	17 (18.68)	897 (98.68)	12 (1.32)
		1-year	69 (80.23)	17 (19.77)	833 (97.09)	25 (2.91)	63 (69.23)	28 (30.77)	886 (97.47)	23 (2.53)
		1.5-year	69 (80.23)	17 (19.77)	832 (96.97)	26 (3.03)	63 (69.23)	28 (30.77)	869 (95.6)	40 (4.4)
	16-18	30-day	111 (93.28)	8 (6.72)	1179 (99.49)	6 (0.51)	68 (97.14)	2 (2.86)	697 (99.71)	2 (0.29)
		180-day	103 (86.55)	16 (13.45)	1166 (98.4)	19 (1.6)	60 (85.71)	10 (14.29)	692 (99)	7 (1)
		1-year	100 (84.03)	19 (15.97)	1157 (97.64)	28 (2.36)	51 (72.86)	19 (27.14)	681 (97.42)	18 (2.58)
		1.5-year	100 (84.03)	19 (15.97)	1153 (97.3)	32 (2.7)	51 (72.86)	19 (27.14)	671 (95.99)	28 (4.01)

**Table S9: Readmission for COVID-19 and Influenza hospitalized children as compared to controls after propensity score matching**

			All patients				Patients after PSM			
			COVID (all)		Influenza (all)		COVID (PSM)		Influenza (PSM)	
			No	Yes	No	Yes	No	Yes	No	Yes
Sex	Age	Time	n (%)	n (%)	n (%)	n (%)	n (%)	n (%)	n (%)	n (%)
Male	0-5	30-day	325 (96.15)	13 (3.85)	1021 (96.14)	41 (3.86)	318 (96.36)	12 (3.64)	315 (94.88)	17 (5.12)
		180-day	311 (92.01)	27 (7.99)	916 (86.25)	146 (13.75)	305 (92.42)	25 (7.58)	291 (87.65)	41 (12.35)
		1-year	298 (88.17)	40 (11.83)	839 (79)	223 (21)	292 (88.48)	38 (11.52)	273 (82.23)	59 (17.77)
		1.5-year	298 (88.17)	40 (11.83)	839 (79)	223 (21)	292 (88.48)	38 (11.52)	273 (82.23)	59 (17.77)
	6-10	30-day	40 (95.24)	2 (4.76)	257 (95.19)	13 (4.81)	36 (94.74)	2 (5.26)	39 (90.7)	4 (9.3)
		180-day	33 (78.57)	9 (21.43)	233 (86.3)	37 (13.7)	30 (78.95)	8 (21.05)	37 (86.05)	6 (13.95)
		1-year	31 (73.81)	11 (26.19)	213 (78.89)	57 (21.11)	28 (73.68)	10 (26.32)	33 (76.74)	10 (23.26)
		1.5-year	31 (73.81)	11 (26.19)	213 (78.89)	57 (21.11)	28 (73.68)	10 (26.32)	33 (76.74)	10 (23.26)
	11-15	30-day	75 (94.94)	4 (5.06)	112 (96.55)	4 (3.45)	56 (96.55)	2 (3.45)	52 (98.11)	1 (1.89)
		180-day	66 (83.54)	13 (16.46)	100 (86.21)	16 (13.79)	52 (89.66)	6 (10.34)	48 (90.57)	5 (9.43)
		1-year	66 (83.54)	13 (16.46)	91 (78.45)	25 (21.55)	52 (89.66)	6 (10.34)	46 (86.79)	7 (13.21)
		1.5-year	66 (83.54)	13 (16.46)	91 (78.45)	25 (21.55)	52 (89.66)	6 (10.34)	46 (86.79)	7 (13.21)
	16-18	30-day	61 (91.04)	6 (8.96)	58 (92.06)	5 (7.94)	38 (90.48)	4 (9.52)	34 (91.89)	3 (8.11)
		180-day	58 (86.57)	9 (13.43)	51 (80.95)	12 (19.05)	37 (88.1)	5 (11.9)	30 (81.08)	7 (18.92)
		1-year	55 (82.09)	12 (17.91)	48 (76.19)	15 (23.81)	35 (83.33)	7 (16.67)	29 (78.38)	8 (21.62)
		1.5-year	55 (82.09)	12 (17.91)	48 (76.19)	15 (23.81)	35 (83.33)	7 (16.67)	29 (78.38)	8 (21.62)
Female	0-5	30-day	256 (96.24)	10 (3.76)	862 (96.1)	35 (3.9)	248 (96.5)	9 (3.5)	259 (97.74)	6 (2.26)
		180-day	243 (91.35)	23 (8.65)	797 (88.85)	100 (11.15)	236 (91.83)	21 (8.17)	242 (91.32)	23 (8.68)
		1-year	236 (88.72)	30 (11.28)	743 (82.83)	154 (17.17)	229 (89.11)	28 (10.89)	233 (87.92)	32 (12.08)
		1.5-year	236 (88.72)	30 (11.28)	742 (82.72)	155 (17.28)	229 (89.11)	28 (10.89)	233 (87.92)	32 (12.08)
	6-10	30-day	53 (94.64)	3 (5.36)	199 (96.6)	7 (3.4)	49 (94.23)	3 (5.77)	54 (100)	0 (0.0)
		180-day	49 (87.5)	7 (12.5)	184 (89.32)	22 (10.68)	47 (90.38)	5 (9.62)	52 (96.3)	2 (3.7)
		1-year	49 (87.5)	7 (12.5)	173 (83.98)	33 (16.02)	47 (90.38)	5 (9.62)	49 (90.74)	5 (9.26)
		1.5-year	49 (87.5)	7 (12.5)	173 (83.98)	33 (16.02)	47 (90.38)	5 (9.62)	49 (90.74)	5 (9.26)
	11-15	30-day	80 (93.02)	6 (6.98)	84 (92.31)	7 (7.69)	56 (91.8)	5 (8.2)	53 (94.64)	3 (5.36)
		180-day	71 (82.56)	15 (17.44)	74 (81.32)	17 (18.68)	49 (80.33)	12 (19.67)	46 (82.14)	10 (17.86)
		1-year	69 (80.23)	17 (19.77)	63 (69.23)	28 (30.77)	47 (77.05)	14 (22.95)	40 (71.43)	16 (28.57)
		1.5-year	69 (80.23)	17 (19.77)	63 (69.23)	28 (30.77)	47 (77.05)	14 (22.95)	40 (71.43)	16 (28.57)
	16-18	30-day	111 (93.28)	8 (6.72)	68 (97.14)	2 (2.86)	49 (89.09)	6 (10.91)	51 (98.08)	1 (1.92)
		180-day	103 (86.55)	16 (13.45)	60 (85.71)	10 (14.29)	46 (83.64)	9 (16.36)	44 (84.62)	8 (15.38)
		1-year	100 (84.03)	19 (15.97)	51 (72.86)	19 (27.14)	44 (80)	11 (20)	37 (71.15)	15 (28.85)
		1.5-year	100 (84.03)	19 (15.97)	51 (72.86)	19 (27.14)	44 (80)	11 (20)	37 (71.15)	15 (28.85)



Tables **S10** and **S11** show the results of the simple and multivariable Cox-Regression models to evaluate associations between medication groups and readmission due to any reason, separately for COVID-hospitalized children (**S12**) and Influenza-hospitalized children (**S13**). Note that all confounder with a  $p < 0.1$  in the simple models were further investigated in the multivariable model.

**Table S10: Results of simple and multivariable Cox models for readmission after COVID-19 hospitalisation**

Confounder	Simple		Multivariable	
	HR (CI)	p-value	HR (CI)	p-value
Age Group: 6-10 (ref: 0-5)	1.13 (0.61-2.07)	0.7057	1.02 (0.61-1.71)	0.9420
Age Group: 11-15 (ref: 0-5)	1.11 (0.70-1.74)	0.6630	1.16 (0.76-1.77)	0.4999
Age Group: 16-18 (ref: 0-5)	0.94 (0.61-1.45)	0.7817	1.05 (0.67-1.63)	0.8466
Sex: W (ref: M)	0.94 (0.67-1.30)	0.6920	0.94 (0.68-1.30)	0.6980
Number Medication groups: 1 (ref: 0)	1.27 (1.01-1.60)	0.0435	1.16 (0.89-1.50)	0.2703
Number Medication groups: $\geq 2$ (ref: 0)	2.93 (2.04-4.21)	<0.001	1.96 (1.39-2.78)	<0.001
Wave	1.02 (0.75-1.40)	0.8828	1.04 (0.74-1.44)	0.8353
Wave	0.44 (0.26-0.74)	0.0023	0.43 (0.24-0.77)	0.0043
Length of hospital stay	1.03 (1.02-1.04)	<0.001	1.03 (1.02-1.03)	<0.001
Anticoagulants: Yes (ref: No)	0.64 (0.29-1.40)	0.2609		
Antibiotics, Antivirals, Antiprotozoals or Anthelmintics: Yes (ref: No)	1.28 (0.78-2.11)	0.3342		
Insulins and other Antidiabetics: Yes (ref: No)	1.44 (0.10-21.09)	0.7922		
"heart" drugs: Yes (ref: No)	NA (NA-NA)	NA		
Antihypertensives incl. Diuretics and Renin-angiotensin-aldosterone system inhibitors: Yes (ref: No)	NA (NA-NA)	NA		
Immunosuppressants and Immunomodulators: Yes (ref: No)	0.38 (0.06-2.32)	0.2916		
Systemic Steroids: Yes (ref: No)	1.57 (1.04-2.38)	0.0308	1.42 (0.84-2.41)	0.1936
Chemotherapy: Yes (ref: No)	2.45 (1.03-5.82)	0.0423	2.56 (0.95-6.95)	0.0642
Iron supplements, Erythropoietic stimulating agents, Vitamin B12, folic acid: Yes (ref: No)	1.50 (0.55-4.07)	0.4249		
Antacids incl. Antihistamines: Yes (ref: No)	2.01 (0.86-4.68)	0.1070		
Vitamin D and other Vitamin supplements: Yes (ref: No)	1.01 (0.64-1.60)	0.9536		
Hormonal contraceptives and similar hormone preparations: Yes (ref: No)	2.31 (1.35-3.94)	0.0021	2.53 (1.48-4.33)	<0.001
Interferons and CSF: Yes (ref: No)	2.82 (1.41-5.63)	0.0034	1.74 (0.51-5.94)	0.3761
NSAR and other anti-inflammatory drugs: Yes (ref: No)	0.79 (0.56-1.11)	0.1671		
Antiepileptics: Yes (ref: No)	2.81 (1.52-5.20)	<0.001	2.24 (0.88-5.68)	0.0900
Antipsychotics: Yes (ref: No)	1.82 (0.97-3.41)	0.0642	1.47 (0.45-4.78)	0.5223
Rhinological and throat antiseptics: Yes (ref: No)	0.93 (0.48-1.79)	0.8206		
inhaled anti-obstructive drugs: Yes (ref: No)	0.98 (0.54-1.77)	0.9360		
inhaled steroids: Yes (ref: No)	0.63 (0.35-1.12)	0.1163		
other COPD drugs: Yes (ref: No)	2.25 (1.17-4.35)	0.0157	2.70 (1.46-5.01)	0.0016
Cold and Cough preparations: Yes (ref: No)	0.74 (0.34-1.61)	0.4428		
Systemic Antihistamines: Yes (ref: No)	0.60 (0.27-1.33)	0.2056		

**Table S11: Results of simple and multivariable Cox models for readmission after Influenza hospitalisation**

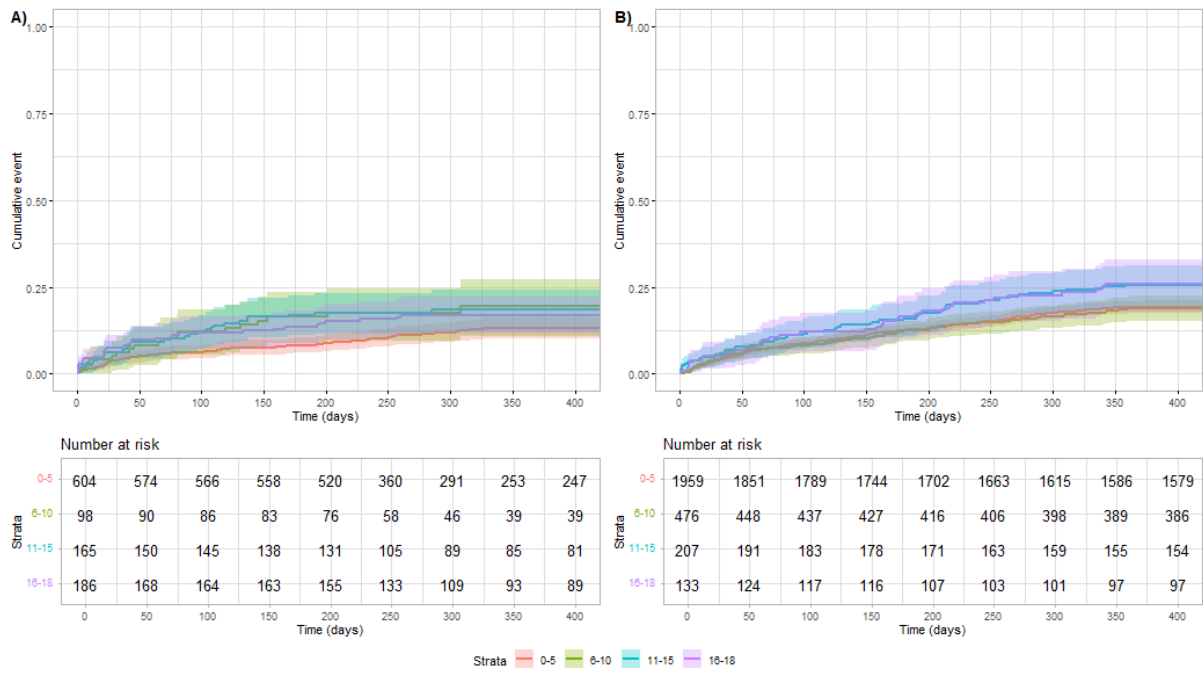
Confounder	Simple		Multivariable	
	HR (CI)	p-value	HR (CI)	p-value
Age Group: 6-10 (ref: 0-5)	1.01 (0.80-1.27)	0.9549	0.93 (0.75-1.15)	0.4869
Age Group: 11-15 (ref: 0-5)	1.40 (1.10-1.79)	0.0071	1.18 (0.86-1.62)	0.3052
Age Group: 16-18 (ref: 0-5)	1.31 (1.10-1.57)	0.0026	1.23 (1.02-1.47)	0.0271
Sex: W (ref: M)	0.87 (0.73-1.03)	0.1155	0.88 (0.74-1.04)	0.1197
Number Medication groups: 1 (ref: 0)	1.37 (1.09-1.72)	0.0066	1.33 (1.06-1.67)	0.0132
Number Medication groups: ≥ 2 (ref: 0)	2.15 (1.89-2.45)	<0.001	1.57 (1.23-2.02)	<0.001
Wave	0.99 (0.79-1.24)	0.9316	0.98 (0.77-1.25)	0.8931
Wave	0.65 (0.50-0.86)	0.0023	0.65 (0.50-0.85)	0.0016
Length of hospital stay	1.11 (1.09-1.13)	<0.001	1.10 (1.08-1.12)	<0.001
Anticoagulants: Yes (ref: No)	2.92 (1.40-6.07)	0.0041	2.75 (1.04-7.27)	0.0412
Antibiotics, Antivirals, Antiprotozoals or Anthelmintics: Yes (ref: No)	0.96 (0.71-1.29)	0.7663		
Insulins and other Antidiabetics: Yes (ref: No)	0.72 (0.22-2.35)	0.5884		
"heart" drugs: Yes (ref: No)	0.79 (0.25-2.51)	0.6877		
Antihypertensives incl. Diuretics and Renin-angiotensin-aldosterone system inhibitors: Yes (ref: No)	0.71 (0.33-1.55)	0.3927		
Immunosuppressants and Immunomodulators: Yes (ref: No)	1.02 (0.32-3.31)	0.9681		
Systemic Steroids: Yes (ref: No)	1.17 (0.86-1.60)	0.3085		
Chemotherapy: Yes (ref: No)	6.97 (4.72-10.31)	<0.001	6.33 (4.39-9.13)	<0.001
Iron supplements, Erythropoietic stimulating agents, Vitamin B12, folic acid: Yes (ref: No)	0.70 (0.35-1.37)	0.2942		
Antacids incl. Antihistamines: Yes (ref: No)	1.72 (1.09-2.71)	0.0191	1.77 (1.28-2.44)	<0.001
Vitamin D and other Vitamin supplements: Yes (ref: No)	1.06 (0.74-1.53)	0.7481		
Hormonal contraceptives and similar hormone preparations: Yes (ref: No)	1.22 (0.51-2.95)	0.6524		
Interferons and CSF: Yes (ref: No)	1.31 (0.76-2.27)	0.3311		
NSAR and other anti-inflammatory drugs: Yes (ref: No)	0.96 (0.81-1.14)	0.6398		
Antiepileptics: Yes (ref: No)	2.64 (2.06-3.39)	<0.001	2.09 (1.73-2.53)	<0.001
Antipsychotics: Yes (ref: No)	1.91 (1.74-2.09)	<0.001	1.44 (1.29-1.61)	<0.001
Rhinological and throat antiseptics: Yes (ref: No)	1.06 (0.85-1.32)	0.6161		
inhaled anti-obstructive drugs: Yes (ref: No)	1.40 (1.20-1.63)	<0.001	1.51 (1.20-1.90)	<0.001
inhaled steroids: Yes (ref: No)	0.87 (0.64-1.19)	0.3860		
other COPD drugs: Yes (ref: No)	0.68 (0.36-1.30)	0.2481		
Cold and Cough preparations: Yes (ref: No)	0.80 (0.58-1.11)	0.1791		
Systemic Antihistamines: Yes (ref: No)	0.72 (0.51-1.01)	0.0556	0.77 (0.51-1.16)	0.2037

Table S12 shows the results of the simple and multivariable Cox-Regression models to evaluate associations between propensity score matched COVID-hospitalized children and Influenza-hospitalized children. Note that all confounder with a  $p < 0.1$  in the simple models were further investigated in the multivariable model.

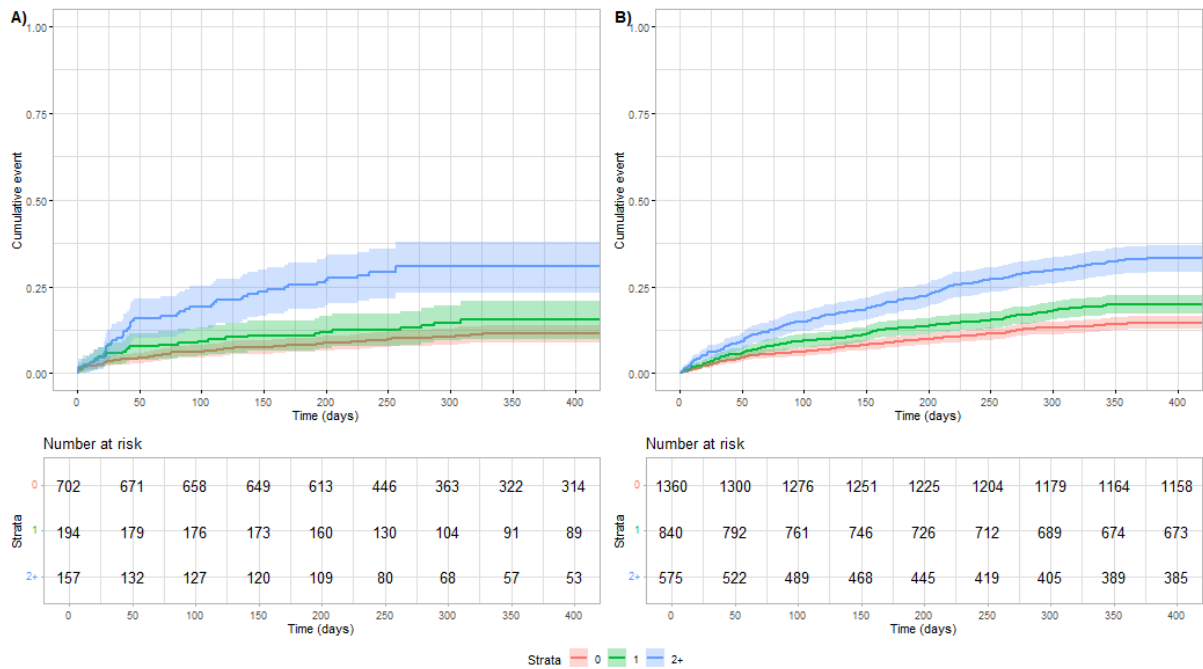
**Table S12: Results of the simple and multivariable Cox regression models to compare re-admission due to any reason after between groups.**

Confounder	Simple		Multivariable	
	HR (CI)	p- value	HR (CI)	p- value
<b>Group: Flu (ref: Covid)</b>	1.24 (1.04-1.47)	0.0156	1.23 (1.03-1.47)	0.0214
<b>Age Group: 6-10 (ref: 0-5)</b>	0.99 (0.67-1.48)	0.9695	0.97 (0.65-1.46)	0.892
<b>Age Group: 11-15 (ref: 0-5)</b>	1.35 (0.88-2.07)	0.1631	1.34 (0.87-2.09)	0.1861
<b>Age Group: 16-18 (ref: 0-5)</b>	1.30 (0.97-1.75)	0.0787	1.26 (0.91-1.77)	0.1678
<b>Sex: W (ref: M)</b>	0.88 (0.64-1.23)	0.4656	0.88 (0.64-1.21)	0.4319
<b>Number Medication groups: 1 (ref: 0)</b>	1.53 (1.14-2.04)	0.0042	1.48 (1.09-2.01)	0.0131
<b>Number Medication groups: &gt;=2 (ref: 0)</b>	2.51 (1.89-3.33)	0	2.06 (1.55-2.73)	0
<b>Length of hospital stay (days)</b>	1.03 (1.01-1.06)	0.0078	1.03 (1.01-1.06)	0.0106
<b>Anticoagulants: Yes (ref: No)</b>	1.76 (0.90-3.42)	0.0986	1.03 (0.38-2.77)	0.9596
<b>Antibiotics, Antivirals, Antiprotozoals or Anthelmintics: Yes (ref: No)</b>	0.87 (0.63-1.21)	0.421		
<b>Insulins and other Antidiabetics: Yes (ref: No)</b>	0.86 (0.08-8.95)	0.9026		
<b>"heart" drugs: Yes (ref: No)</b>	NA	NA	NA	NA
<b>Antihypertensives incl. Diuretics and Renin-angiotensin-aldosterone system inhibitors: Yes (ref: No)</b>	0.85 (0.38-1.89)	0.6938		
<b>Immunosuppressants and Immunomodulators: Yes (ref: No)</b>	2.16 (0.86-5.42)	0.101		
<b>Systemic Steroids: Yes (ref: No)</b>	1.25 (0.66-2.36)	0.489		
<b>Chemotherapy: Yes (ref: No)</b>	NA	NA		
<b>Iron supplements, Erythropoietic stimulating agents, Vitamin B12, folic acid: Yes (ref: No)</b>	1.24 (0.42-3.73)	0.6962		
<b>Antacids incl. Antihistamines: Yes (ref: No)</b>	3.13 (1.25-7.83)	0.0146	2.10 (0.65-6.80)	0.2177
<b>Vitamin D and other Vitamin supplements: Yes (ref: No)</b>	1.28 (0.89-1.85)	0.1866		
<b>Hormonal contraceptives and similar hormone preparations: Yes (ref: No)</b>	1.36 (0.44-4.18)	0.5942		
<b>Interferons and CSF: Yes (ref: No)</b>	2.15 (1.20-3.87)	0.0106	2.21 (1.13-4.34)	0.0207
<b>NSAR and other anti-inflammatory drugs: Yes (ref: No)</b>	0.75 (0.47-1.22)	0.2466		
<b>Antiepileptics: Yes (ref: No)</b>	2.83 (1.81-4.44)	0	2.13 (1.17-3.86)	0.0128
<b>Antipsychotics: Yes (ref: No)</b>	2.02 (1.52-2.69)	0	1.47 (0.79-2.73)	0.2277
<b>Rhinological and throat antiseptics: Yes (ref: No)</b>	0.90 (0.68-1.20)	0.4764		
<b>inhaled anti-obstructive drugs: Yes (ref: No)</b>	1.34 (0.79-2.26)	0.2797		
<b>inhaled steroids: Yes (ref: No)</b>	0.80 (0.38-1.69)	0.5547		
<b>other COPD drugs: Yes (ref: No)</b>	0.82 (0.52-1.31)	0.4131		
<b>Cold and Cough preparations: Yes (ref: No)</b>	0.61 (0.32-1.17)	0.1365		
<b>Systemic Antihistamines: Yes (ref: No)</b>	0.90 (0.49-1.66)	0.7438		

**Figure S3: Kaplan-Meier curves and corresponding 95% confidence intervals for probability of readmission by age group within COVID-hospitalised (A) and Influenza-hospitalized (B) children.**



**Figure S4: Kaplan-Meier curves and corresponding 95% confidence intervals for probability of readmission for the number of medication groups within COVID- hospitalised (A) and Influenza-hospitalized (B) children.**



## Outcomes: short and long-term mortality

**Table S13** shows the hospital mortality and 30-day, 180-day, 1-year, and 1.5-year mortality rates for COVID- and Influenza-hospitalized patients and age-, sex- and region-matched controls separately for the four age groups and according to sex. Numbers are given for the overall patient and control cohorts.

**Table S14** shows hospital mortality and 30-day, 180-day, 1-year, and 1.5-year mortality rates for COVID- and Influenza-hospitalized patients and age-, sex- and region-matched controls separately for the four age groups and according to sex. Numbers are given for the overall patient and control cohorts, as well as for the propensity score-matched COVID and Influenza patients.

**Table S15** shows the hospital mortality and 30-day, 180-day, 1-year, and 1.5-year mortality rates for COVID-hospitalized patients and age-, sex- and region-matched controls separately for the four age groups, according to sex and the number of medication groups received (at least one medication from the corresponding medication group at least once in the year before COVID-19 hospitalisation). Numbers are given for the overall patient and control cohorts.

**Table S16** shows the hospital mortality and 30-day, 180-day, 1-year, and 1.5-year mortality rates for Influenza-hospitalized patients and age-, sex- and region-matched controls separately for the four age groups, according to sex and the number of medication groups received (at least one medication from the corresponding medication group at least once in the year before Influenza hospitalisation). Numbers are given for the overall patient and control cohorts.

**Table S13: Mortality for all COVID- and Influenza-patients and corresponding controls**

			COVID				Influenza			
			COVID (all)		Controls (all)		Influenza (all)		Controls (all)	
			Alive	Dead	Alive	Dead	Alive	Dead	Alive	Dead
Sex	Age	Time	n (%)	n (%)	n (%)	n (%)	n (%)	n (%)	n (%)	n (%)
Male	0-5	Hospital	338 (99.71)	1 (0.29)	3373 (100)	0 (0.0)	1062 (99.91)	1 (0.09)	10545 (99.99)	1 (0.01)
		30-day	338 (99.71)	1 (0.29)	3369 (99.88)	4 (0.12)	1062 (99.91)	1 (0.09)	10544 (99.98)	2 (0.02)
		180-day	338 (99.71)	1 (0.29)	3369 (99.88)	4 (0.12)	1061 (99.81)	2 (0.19)	10542 (99.96)	4 (0.04)
		1-year	172 (50.74)	1 (0.29)	1707 (50.61)	4 (0.12)	1058 (99.53)	4 (0.38)	10529 (99.84)	7 (0.07)
		1.5-year	77 (22.71)	1 (0.29)	767 (22.74)	4 (0.12)	1058 (99.53)	4 (0.38)	10528 (99.83)	8 (0.08)
	6-10	Hospital	42 (100)	0 (0.0)	430 (100)	0 (0.0)	270 (100)	0 (0.0)	2701 (100)	0 (0.0)
		30-day	42 (100)	0 (0.0)	430 (100)	0 (0.0)	270 (100)	0 (0.0)	2701 (100)	0 (0.0)
		180-day	42 (100)	0 (0.0)	430 (100)	0 (0.0)	270 (100)	0 (0.0)	2701 (100)	0 (0.0)
		1-year	25 (59.52)	1 (2.38)	270 (62.79)	0 (0.0)	270 (100)	0 (0.0)	2701 (100)	0 (0.0)
		1.5-year	13 (30.95)	1 (2.38)	150 (34.88)	0 (0.0)	268 (99.26)	2 (0.74)	2701 (100)	0 (0.0)
	11-15	Hospital	79 (97.53)	2 (2.47)	808 (100)	0 (0.0)	116 (100)	0 (0.0)	1160 (100)	0 (0.0)
		30-day	79 (97.53)	2 (2.47)	808 (100)	0 (0.0)	116 (100)	0 (0.0)	1160 (100)	0 (0.0)
		180-day	79 (97.53)	2 (2.47)	808 (100)	0 (0.0)	116 (100)	0 (0.0)	1160 (100)	0 (0.0)
		1-year	57 (70.37)	2 (2.47)	588 (72.77)	0 (0.0)	116 (100)	0 (0.0)	1160 (100)	0 (0.0)
		1.5-year	27 (33.33)	2 (2.47)	270 (33.42)	0 (0.0)	115 (99.14)	1 (0.86)	1160 (100)	0 (0.0)
	16-18	Hospital	67 (95.71)	3 (4.29)	697 (100)	0 (0.0)	63 (100)	0 (0.0)	628 (100)	0 (0.0)
		30-day	68 (97.14)	2 (2.86)	697 (100)	0 (0.0)	63 (100)	0 (0.0)	628 (100)	0 (0.0)
		180-day	66 (94.29)	4 (5.71)	696 (99.86)	1 (0.14)	63 (100)	0 (0.0)	628 (100)	0 (0.0)
		1-year	42 (60)	4 (5.71)	427 (61.26)	1 (0.14)	62 (98.41)	0 (0.0)	618 (98.41)	0 (0.0)
		1.5-year	22 (31.43)	4 (5.71)	217 (31.13)	1 (0.14)	62 (98.41)	0 (0.0)	618 (98.41)	0 (0.0)
Female	0-5	Hospital	266 (98.52)	4 (1.48)	2715 (100)	0 (0.0)	897 (99.89)	1 (0.11)	8900 (100)	0 (0.0)
		30-day	267 (98.89)	3 (1.11)	2714 (99.96)	1 (0.04)	897 (99.89)	1 (0.11)	8899 (99.99)	1 (0.01)
		180-day	266 (98.52)	4 (1.48)	2712 (99.89)	3 (0.11)	897 (99.89)	1 (0.11)	8898 (99.98)	2 (0.02)
		1-year	130 (48.15)	4 (1.48)	1331 (49.02)	3 (0.11)	896 (99.78)	1 (0.11)	8884 (99.82)	6 (0.07)
		1.5-year	52 (19.26)	4 (1.48)	538 (19.82)	3 (0.11)	895 (99.67)	2 (0.22)	8883 (99.81)	7 (0.08)
	6-10	Hospital	56 (100)	0 (0.0)	560 (100)	0 (0.0)	206 (98.1)	4 (1.9)	2091 (100)	0 (0.0)
		30-day	56 (100)	0 (0.0)	560 (100)	0 (0.0)	206 (98.1)	4 (1.9)	2091 (100)	0 (0.0)
		180-day	56 (100)	0 (0.0)	560 (100)	0 (0.0)	206 (98.1)	4 (1.9)	2091 (100)	0 (0.0)
		1-year	28 (50)	0 (0.0)	280 (50)	0 (0.0)	206 (98.1)	4 (1.9)	2091 (100)	0 (0.0)
		1.5-year	14 (25)	0 (0.0)	140 (25)	0 (0.0)	206 (98.1)	4 (1.9)	2091 (100)	0 (0.0)
	11-15	Hospital	86 (100)	0 (0.0)	858 (100)	0 (0.0)	91 (100)	0 (0.0)	909 (100)	0 (0.0)
		30-day	86 (100)	0 (0.0)	858 (100)	0 (0.0)	91 (100)	0 (0.0)	909 (100)	0 (0.0)
		180-day	86 (100)	0 (0.0)	858 (100)	0 (0.0)	91 (100)	0 (0.0)	909 (100)	0 (0.0)
		1-year	49 (56.98)	0 (0.0)	489 (56.99)	0 (0.0)	91 (100)	0 (0.0)	909 (100)	0 (0.0)
		1.5-year	23 (26.74)	0 (0.0)	229 (26.69)	0 (0.0)	91 (100)	0 (0.0)	909 (100)	0 (0.0)
	16-18	Hospital	119 (100)	0 (0.0)	1185 (100)	0 (0.0)	70 (100)	0 (0.0)	699 (100)	0 (0.0)
		30-day	119 (100)	0 (0.0)	1185 (100)	0 (0.0)	70 (100)	0 (0.0)	699 (100)	0 (0.0)
		180-day	119 (100)	0 (0.0)	1185 (100)	0 (0.0)	70 (100)	0 (0.0)	699 (100)	0 (0.0)
		1-year	75 (63.03)	0 (0.0)	748 (63.12)	0 (0.0)	69 (98.57)	0 (0.0)	689 (98.57)	0 (0.0)
		1.5-year	42 (35.29)	0 (0.0)	420 (35.44)	0 (0.0)	69 (98.57)	0 (0.0)	689 (98.57)	0 (0.0)

**Table S14: Mortality for all COVID- and Influenza-patients before and after propensity score matching (PSM)**

			All patients				Patients after PSM			
			COVID (all)		Influenza (all)		COVID (PSM)		Influenza (PSM)	
			Alive	Dead	Alive	Dead	Alive	Dead	Alive	Dead
Sex	Age	Time	n (%)	n (%)	n (%)	n (%)	n (%)	n (%)	n (%)	
Male	0-5	Hospital	338 (99.71)	1 (0.29)	1062 (99.91)	1 (0.09)	330 (99.7)	1 (0.3)	332 (99.7)	1 (0.3)
		30-day	338 (99.71)	1 (0.29)	1062 (99.91)	1 (0.09)	330 (99.7)	1 (0.3)	332 (99.7)	1 (0.3)
		180-day	338 (99.71)	1 (0.29)	1061 (99.81)	2 (0.19)	330 (99.7)	1 (0.3)	332 (99.7)	1 (0.3)
		1-year	172 (50.74)	1 (0.29)	1058 (99.53)	4 (0.38)	168 (50.76)	1 (0.3)	331 (99.4)	1 (0.3)
		1.5-year	77 (22.71)	1 (0.29)	1058 (99.53)	4 (0.38)	76 (22.96)	1 (0.3)	331 (99.4)	1 (0.3)
	6-10	Hospital	42 (100)	0 (0.0)	270 (100)	0 (0.0)	38 (100)	0 (0.0)	43 (100)	0 (0.0)
		30-day	42 (100)	0 (0.0)	270 (100)	0 (0.0)	38 (100)	0 (0.0)	43 (100)	0 (0.0)
		180-day	42 (100)	0 (0.0)	270 (100)	0 (0.0)	38 (100)	0 (0.0)	43 (100)	0 (0.0)
		1-year	25 (59.52)	1 (2.38)	270 (100)	0 (0.0)	25 (65.79)	0 (0.0)	43 (100)	0 (0.0)
		1.5-year	13 (30.95)	1 (2.38)	268 (99.26)	2 (0.74)	13 (34.21)	0 (0.0)	43 (100)	0 (0.0)
	11-15	Hospital	79 (97.53)	2 (2.47)	116 (100)	0 (0.0)	58 (100)	0 (0.0)	53 (100)	0 (0.0)
		30-day	79 (97.53)	2 (2.47)	116 (100)	0 (0.0)	58 (100)	0 (0.0)	53 (100)	0 (0.0)
		180-day	79 (97.53)	2 (2.47)	116 (100)	0 (0.0)	58 (100)	0 (0.0)	53 (100)	0 (0.0)
		1-year	57 (70.37)	2 (2.47)	116 (100)	0 (0.0)	42 (72.41)	0 (0.0)	53 (100)	0 (0.0)
		1.5-year	27 (33.33)	2 (2.47)	115 (99.14)	1 (0.86)	20 (34.48)	0 (0.0)	53 (100)	0 (0.0)
	16-18	Hospital	67 (95.71)	3 (4.29)	63 (100)	0 (0.0)	42 (97.67)	1 (2.33)	37 (100)	0 (0.0)
		30-day	68 (97.14)	2 (2.86)	63 (100)	0 (0.0)	42 (97.67)	1 (2.33)	37 (100)	0 (0.0)
		180-day	66 (94.29)	4 (5.71)	63 (100)	0 (0.0)	42 (97.67)	1 (2.33)	37 (100)	0 (0.0)
		1-year	42 (60)	4 (5.71)	62 (98.41)	0 (0.0)	22 (51.16)	1 (2.33)	36 (97.3)	0 (0.0)
		1.5-year	22 (31.43)	4 (5.71)	62 (98.41)	0 (0.0)	13 (30.23)	1 (2.33)	36 (97.3)	0 (0.0)
Female	0-5	Hospital	266 (98.52)	4 (1.48)	897 (99.89)	1 (0.11)	257 (99.61)	1 (0.39)	265 (100)	0 (0.0)
		30-day	267 (98.89)	3 (1.11)	897 (99.89)	1 (0.11)	257 (99.61)	1 (0.39)	265 (100)	0 (0.0)
		180-day	266 (98.52)	4 (1.48)	897 (99.89)	1 (0.11)	257 (99.61)	1 (0.39)	265 (100)	0 (0.0)
		1-year	130 (48.15)	4 (1.48)	896 (99.78)	1 (0.11)	127 (49.22)	1 (0.39)	264 (99.62)	0 (0.0)
		1.5-year	52 (19.26)	4 (1.48)	895 (99.67)	2 (0.22)	51 (19.77)	1 (0.39)	264 (99.62)	0 (0.0)
	6-10	Hospital	56 (100)	0 (0.0)	206 (98.1)	4 (1.9)	52 (100)	0 (0.0)	54 (94.74)	3 (5.26)
		30-day	56 (100)	0 (0.0)	206 (98.1)	4 (1.9)	52 (100)	0 (0.0)	54 (94.74)	3 (5.26)
		180-day	56 (100)	0 (0.0)	206 (98.1)	4 (1.9)	52 (100)	0 (0.0)	54 (94.74)	3 (5.26)
		1-year	28 (50)	0 (0.0)	206 (98.1)	4 (1.9)	26 (50)	0 (0.0)	54 (94.74)	3 (5.26)
		1.5-year	14 (25)	0 (0.0)	206 (98.1)	4 (1.9)	13 (25)	0 (0.0)	54 (94.74)	3 (5.26)
	11-15	Hospital	86 (100)	0 (0.0)	91 (100)	0 (0.0)	61 (100)	0 (0.0)	56 (100)	0 (0.0)
		30-day	86 (100)	0 (0.0)	91 (100)	0 (0.0)	61 (100)	0 (0.0)	56 (100)	0 (0.0)
		180-day	86 (100)	0 (0.0)	91 (100)	0 (0.0)	61 (100)	0 (0.0)	56 (100)	0 (0.0)
		1-year	49 (56.98)	0 (0.0)	91 (100)	0 (0.0)	34 (55.74)	0 (0.0)	56 (100)	0 (0.0)
		1.5-year	23 (26.74)	0 (0.0)	91 (100)	0 (0.0)	17 (27.87)	0 (0.0)	56 (100)	0 (0.0)
	16-18	Hospital	119 (100)	0 (0.0)	70 (100)	0 (0.0)	55 (100)	0 (0.0)	52 (100)	0 (0.0)
		30-day	119 (100)	0 (0.0)	70 (100)	0 (0.0)	55 (100)	0 (0.0)	52 (100)	0 (0.0)
		180-day	119 (100)	0 (0.0)	70 (100)	0 (0.0)	55 (100)	0 (0.0)	52 (100)	0 (0.0)
		1-year	75 (63.03)	0 (0.0)	69 (98.57)	0 (0.0)	33 (60)	0 (0.0)	51 (98.08)	0 (0.0)
		1.5-year	42 (35.29)	0 (0.0)	69 (98.57)	0 (0.0)	17 (30.91)	0 (0.0)	51 (98.08)	0 (0.0)

**Table S15: Mortality for all COVID-patients and controls by number of medication groups received.**

			COVID Patients				Controls (all)				
			0	1	2-5	> 5	0	1	2-5	> 5	
Sex	Age		n (%)	n (%)	n (%)	n (%)	n (%)	n (%)	n (%)	n (%)	
Male	0-5	Hospital	1 (0.36)	0 (0)	0 (0)	0 (0)	0 (0)	0 (0)	0 (0)	0 (0)	0 (0)
		30-day	1 (0.36)	0 (0)	0 (0)	0 (0)	4 (0.14)	0 (0)	0 (0)	0 (0)	0 (0)
		180-day	1 (0.36)	0 (0)	0 (0)	0 (0)	4 (0.14)	0 (0)	0 (0)	0 (0)	0 (0)
		1-year	1 (0.36)	0 (0)	0 (0)	0 (0)	4 (0.14)	0 (0)	0 (0)	0 (0)	0 (0)
		1.5-year	1 (0.36)	0 (0)	0 (0)	0 (0)	4 (0.14)	0 (0)	0 (0)	0 (0)	0 (0)
	6-10	Hospital	0 (0)	0 (0)	0 (0)	0 (0)	0 (0)	0 (0)	0 (0)	0 (0)	0 (0.0)
		30-day	0 (0)	0 (0)	0 (0)	0 (0)	0 (0)	0 (0)	0 (0)	0 (0)	0 (0.0)
		180-day	0 (0)	0 (0)	0 (0)	0 (0)	0 (0)	0 (0)	0 (0)	0 (0)	0 (0.0)
		1-year	0 (0)	0 (0)	0 (0)	1 (100)	0 (0)	0 (0)	0 (0)	0 (0)	0 (0.0)
		1.5-year	0 (0)	0 (0)	0 (0)	1 (100)	0 (0)	0 (0)	0 (0)	0 (0)	0 (0.0)
	11-15	Hospital	0 (0)	0 (0)	1 (5)	1 (50)	0 (0)	0 (0)	0 (0)	0 (0)	0 (0)
		30-day	0 (0)	0 (0)	1 (5)	1 (50)	0 (0)	0 (0)	0 (0)	0 (0)	0 (0)
		180-day	0 (0)	0 (0)	1 (5)	1 (50)	0 (0)	0 (0)	0 (0)	0 (0)	0 (0)
		1-year	0 (0)	0 (0)	1 (5)	1 (50)	0 (0)	0 (0)	0 (0)	0 (0)	0 (0)
		1.5-year	0 (0)	0 (0)	1 (5)	1 (50)	0 (0)	0 (0)	0 (0)	0 (0)	0 (0)
	16-18	Hospital	2 (5.13)	0 (0)	1 (5.88)	0 (0)	0 (0)	0 (0)	0 (0)	0 (0)	0 (0)
		30-day	1 (2.56)	0 (0)	1 (5.88)	0 (0)	0 (0)	0 (0)	0 (0)	0 (0)	0 (0)
		180-day	2 (5.13)	0 (0)	1 (5.88)	1 (100)	0 (0)	1 (0.81)	0 (0)	0 (0)	0 (0)
		1-year	2 (5.13)	0 (0)	1 (5.88)	1 (100)	0 (0)	1 (0.81)	0 (0)	0 (0)	0 (0)
		1.5-year	2 (5.13)	0 (0)	1 (5.88)	1 (100)	0 (0)	1 (0.81)	0 (0)	0 (0)	0 (0)
Female	0-5	Hospital	0 (0)	0 (0)	2 (8)	2 (100)	0 (0)	0 (0)	0 (0)	0 (0)	0 (0)
		30-day	0 (0)	0 (0)	1 (4)	2 (100)	1 (0.04)	0 (0)	0 (0)	0 (0)	0 (0)
		180-day	0 (0)	0 (0)	2 (8)	2 (100)	3 (0.13)	0 (0)	0 (0)	0 (0)	0 (0)
		1-year	0 (0)	0 (0)	2 (8)	2 (100)	3 (0.13)	0 (0)	0 (0)	0 (0)	0 (0)
		1.5-year	0 (0)	0 (0)	2 (8)	2 (100)	3 (0.13)	0 (0)	0 (0)	0 (0)	0 (0)
	6-10	Hospital	0 (0)	0 (0)	0 (0)	0 (0.0)	0 (0)	0 (0)	0 (0)	0 (0)	0 (0)
		30-day	0 (0)	0 (0)	0 (0)	0 (0.0)	0 (0)	0 (0)	0 (0)	0 (0)	0 (0)
		180-day	0 (0)	0 (0)	0 (0)	0 (0.0)	0 (0)	0 (0)	0 (0)	0 (0)	0 (0)
		1-year	0 (0)	0 (0)	0 (0)	0 (0.0)	0 (0)	0 (0)	0 (0)	0 (0)	0 (0)
		1.5-year	0 (0)	0 (0)	0 (0)	0 (0.0)	0 (0)	0 (0)	0 (0)	0 (0)	0 (0)
	11-15	Hospital	0 (0)	0 (0)	0 (0)	0 (0)	0 (0)	0 (0)	0 (0)	0 (0)	0 (0)
		30-day	0 (0)	0 (0)	0 (0)	0 (0)	0 (0)	0 (0)	0 (0)	0 (0)	0 (0)
		180-day	0 (0)	0 (0)	0 (0)	0 (0)	0 (0)	0 (0)	0 (0)	0 (0)	0 (0)
		1-year	0 (0)	0 (0)	0 (0)	0 (0)	0 (0)	0 (0)	0 (0)	0 (0)	0 (0)
		1.5-year	0 (0)	0 (0)	0 (0)	0 (0)	0 (0)	0 (0)	0 (0)	0 (0)	0 (0)
	16-18	Hospital	0 (0)	0 (0)	0 (0)	0 (0)	0 (0)	0 (0)	0 (0)	0 (0)	0 (0)
		30-day	0 (0)	0 (0)	0 (0)	0 (0)	0 (0)	0 (0)	0 (0)	0 (0)	0 (0)
		180-day	0 (0)	0 (0)	0 (0)	0 (0)	0 (0)	0 (0)	0 (0)	0 (0)	0 (0)
		1-year	0 (0)	0 (0)	0 (0)	0 (0)	0 (0)	0 (0)	0 (0)	0 (0)	0 (0)
		1.5-year	0 (0)	0 (0)	0 (0)	0 (0)	0 (0)	0 (0)	0 (0)	0 (0)	0 (0)



**Table S16: Mortality for all Influenza-patients and controls by number of medication groups received.**

			Influenza				Control			
Sex	Age		0 n (%)	1 n (%)	2-5 n (%)	> 5 n (%)	0 n (%)	1 n (%)	2-5 n (%)	> 5 n (%)
Male	0-5	Hospital	0 (0)	0 (0)	1 (0.48)	0 (0)	1 (0.01)	0 (0)	0 (0)	0 (0)
		30-day	0 (0)	0 (0)	1 (0.48)	0 (0)	2 (0.03)	0 (0)	0 (0)	0 (0)
		180-day	0 (0)	1 (0.34)	1 (0.48)	0 (0)	4 (0.05)	0 (0)	0 (0)	0 (0)
		1-year	1 (0.18)	2 (0.68)	1 (0.48)	0 (0)	7 (0.1)	0 (0)	0 (0)	0 (0)
		1.5-year	1 (0.18)	2 (0.68)	1 (0.48)	0 (0)	7 (0.1)	1 (0.05)	0 (0)	0 (0)
	6-10	Hospital	0 (0)	0 (0)	0 (0)	0 (0)	0 (0)	0 (0)	0 (0)	0 (0)
		30-day	0 (0)	0 (0)	0 (0)	0 (0)	0 (0)	0 (0)	0 (0)	0 (0)
		180-day	0 (0)	0 (0)	0 (0)	0 (0)	0 (0)	0 (0)	0 (0)	0 (0)
		1-year	0 (0)	0 (0)	0 (0)	0 (0)	0 (0)	0 (0)	0 (0)	0 (0)
		1.5-year	0 (0)	0 (0)	1 (1.82)	1 (16.67)	0 (0)	0 (0)	0 (0)	0 (0)
	11-15	Hospital	0 (0)	0 (0)	0 (0)	0 (0.0)	0 (0)	0 (0)	0 (0)	0 (0)
		30-day	0 (0)	0 (0)	0 (0)	0 (0.0)	0 (0)	0 (0)	0 (0)	0 (0)
		180-day	0 (0)	0 (0)	0 (0)	0 (0.0)	0 (0)	0 (0)	0 (0)	0 (0)
		1-year	0 (0)	0 (0)	0 (0)	0 (0.0)	0 (0)	0 (0)	0 (0)	0 (0)
		1.5-year	0 (0)	0 (0)	1 (3.03)	0 (0.0)	0 (0)	0 (0)	0 (0)	0 (0)
	16-18	Hospital	0 (0)	0 (0)	0 (0)	0 (0.0)	0 (0)	0 (0)	0 (0)	0 (0)
		30-day	0 (0)	0 (0)	0 (0)	0 (0.0)	0 (0)	0 (0)	0 (0)	0 (0)
		180-day	0 (0)	0 (0)	0 (0)	0 (0.0)	0 (0)	0 (0)	0 (0)	0 (0)
		1-year	0 (0)	0 (0)	0 (0)	0 (0.0)	0 (0)	0 (0)	0 (0)	0 (0)
		1.5-year	0 (0)	0 (0)	0 (0)	0 (0.0)	0 (0)	0 (0)	0 (0)	0 (0)
Female	0-5	Hospital	0 (0)	0 (0)	0 (0)	1 (33.33)	0 (0)	0 (0)	0 (0)	0 (0)
		30-day	0 (0)	0 (0)	0 (0)	1 (33.33)	1 (0.02)	0 (0)	0 (0)	0 (0)
		180-day	0 (0)	0 (0)	0 (0)	1 (33.33)	2 (0.03)	0 (0)	0 (0)	0 (0)
		1-year	0 (0)	0 (0)	0 (0)	1 (33.33)	6 (0.1)	0 (0)	0 (0)	0 (0)
		1.5-year	0 (0)	1 (0.36)	0 (0)	1 (33.33)	7 (0.11)	0 (0)	0 (0)	0 (0)
	6-10	Hospital	0 (0)	1 (1.32)	2 (4.55)	1 (33.33)	0 (0)	0 (0)	0 (0)	0 (0)
		30-day	0 (0)	1 (1.32)	2 (4.55)	1 (33.33)	0 (0)	0 (0)	0 (0)	0 (0)
		180-day	0 (0)	1 (1.32)	2 (4.55)	1 (33.33)	0 (0)	0 (0)	0 (0)	0 (0)
		1-year	0 (0)	1 (1.32)	2 (4.55)	1 (33.33)	0 (0)	0 (0)	0 (0)	0 (0)
		1.5-year	0 (0)	1 (1.32)	2 (4.55)	1 (33.33)	0 (0)	0 (0)	0 (0)	0 (0)
	11-15	Hospital	0 (0)	0 (0)	0 (0)	0 (0)	0 (0)	0 (0)	0 (0)	0 (0)
		30-day	0 (0)	0 (0)	0 (0)	0 (0)	0 (0)	0 (0)	0 (0)	0 (0)
		180-day	0 (0)	0 (0)	0 (0)	0 (0)	0 (0)	0 (0)	0 (0)	0 (0)
		1-year	0 (0)	0 (0)	0 (0)	0 (0)	0 (0)	0 (0)	0 (0)	0 (0)
		1.5-year	0 (0)	0 (0)	0 (0)	0 (0)	0 (0)	0 (0)	0 (0)	0 (0)
	16-18	Hospital	0 (0)	0 (0)	0 (0)	0 (0)	0 (0)	0 (0)	0 (0)	0 (0)
		30-day	0 (0)	0 (0)	0 (0)	0 (0)	0 (0)	0 (0)	0 (0)	0 (0)
		180-day	0 (0)	0 (0)	0 (0)	0 (0)	0 (0)	0 (0)	0 (0)	0 (0)
		1-year	0 (0)	0 (0)	0 (0)	0 (0)	0 (0)	0 (0)	0 (0)	0 (0)
		1.5-year	0 (0)	0 (0)	0 (0)	0 (0)	0 (0)	0 (0)	0 (0)	0 (0)