

S1. Supplementary methods

S1.1 ADNI

The ADNI was launched in 2003 as a public-private partnership, led by Principal Investigator Michael W. Weiner, MD. The primary goal of ADNI has been to test whether serial magnetic resonance imaging (MRI), positron emission tomography (PET), other biological markers, and clinical and neuropsychological assessment can be combined to measure the progression of mild cognitive impairment (MCI) and early Alzheimer's disease (AD).

S1.2 Selecting thresholds for CSF A β

In ADC, A β_{1-42} concentrations in CSF were statistically corrected for time-dependant drifts in values. Gaussian mixture modeling (GMM) was used to fit a bimodal Gaussian distribution in the resulting data, to identify cut-off points for identifying A β positivity.¹ This resulted in a cut-off point of 813 for Innostest assay. Apart from this, a cut-off point of 1089 was used for CSF A β_{1-42} concentrations derived from Elecsys assay.²

In ADNI, A β_{1-42} concentrations obtained from INNO BIA AlzBIO3 xMAP multiplex immunoassay³ were used to fit a GMM with a bimodal Gaussian distribution. A cut-off point of 1029 was identified based on this analysis. The cohorts of ARWiBo, EDSO, and PharmaCog used ELISA assay, where the A β_{1-42} concentrations were rescaled to match the distribution of ADNI subjects.⁴ The aforementioned cut-off point of ADNI was then used in these cohorts as well.

In the NACC cohort, the CSF assay methods were not standardized across the AD research centers, potentially resulting in different cutoffs for each center. The thresholded CSF status was provided in the uniform data set made available for this study.

S1.3 A β positivity in PET scans

In ADC⁵ and GMC⁶ cohorts, A β status in PET images were decided based on radiological readouts. In ADNI and AIBL cohorts, centiloid values were computed for PET images with multiple tracers using capAIBL pipeline⁷. PET images in ADNI used either florbetapir (AV45), Pittsburgh Compound-B (PiB), or florbetaben (FBB) tracer, while those in AIBL used either AV45, PiB, or flutemetamol (FLUTE) tracer. Centiloid-based positivity threshold was chosen as 30 as reported in *Salvado et al.*⁸

In the NACC cohort, the PET tracers and evaluation methods were not standardized across the AD research centers. The thresholded PET A β status was provided in the uniform data set made available for this study.

S1.4 Cognitive domain score computation

Memory: In ADC, the domain memory included the immediate and delayed recall of the Dutch version of the Rey Auditory Verbal Learning Task (RAVLT),⁹ part B of the Visual Association Test (VAT),¹⁰ and delayed recall of the Rey Complex Figure Test (RCFT).¹¹ For AIBL and ADNI, pre-computed domain scores were used and have been described in detail elsewhere.^{12,13} In the NACC cohort, memory domain scores were computed independently for pre-2015 participants and post-2015 participants, since the uniform data set (UDS) and the corresponding cognitive test battery were updated from version 2 (v2) to version 3 (v3), in 2015.¹⁴ The memory domain in v2 included immediate and delayed story recall, whereas in v3 it included immediate and delayed craft story (CS) recall.¹⁵ In the GMC cohort, the domain included immediate and delayed story recollection test, three-objects three-places test,¹⁶ and doors test.¹⁷

Attention and Executive function: In ADC, this domain included the Trail Making Test (TMT) part A and B,¹⁸ the forward and backward condition of digit span,¹⁹ and the Stroop test,²⁰ the letter fluency test²¹, and letter digit substitution test (LDST).²² For ADNI, pre-computed domain scores were used and have been described in detail elsewhere.²³ In the AIBL cohort, this domain included digit symbol substitution test,¹⁹ the forward and backward condition of digit span,¹⁹ controlled oral word association test,²⁴ and Category switching test.²⁵ In the NACC cohort, the domain score for v2 included the forward and backward condition of digit span, WAIS-R digit symbol test,¹⁹ and TMT part A and B. The domain score in v3 included the forward and backward condition of digit span, letter fluency test, and TMT part A and B. In the GMC cohort, the domain score included WAIS-R digit symbol test, TMT part A and B, letter fluency test, the forward and backward condition of digit span, and Victoria stroop test was used.²⁶

Visuospatial function: In ADC, this domain included Rey–Osterrieth Complex Figure test²⁷ and two subtests of the visual object and space perception battery: number location, and fragmented letters.²⁸ For AIBL and ADNI, pre-computed domain scores were used and have been described in detail elsewhere.^{29,30} In the NACC cohort, the domain score was not computed for v2 due to the absence of relevant tests in the UDS, whereas for v3 it was computed based on total score for copy of Benson figure test.³¹ In the GMC cohort, the domain score was based on clock drawing test.³²

Language: In ADC, the domain language included the category fluency test (animal naming)³³ and the naming condition of the VAT. For AIBL and ADNI, pre-computed domain scores were used and have been described in detail elsewhere.^{29,30} In the NACC cohort, the domain score for both v2 and v3 consisted of category fluency test (naming animals and vegetables). Additionally, v2 used total score in Boston naming test,³⁴ while v3 used total score in Multilingual naming test.³⁵ The domain score was not computed in the GMC cohort due to the absence of relevant tests.

S1.5 Training the discriminative event-based model (DEBM)

First, we performed Gaussian mixture modelling (GMM) with the $A\beta^-$ CU group as reference, to derive cut-off points for volumes in each region to be termed “abnormal” in a data-driven way. This was done in a semi-coupled manner for the different subtypes as described in Venkatraghavan *et al.* as co-initialized GMM.³⁶ Secondly, using the results of GMM, we estimated posterior probabilities for each region to be abnormal for each $A\beta^+$ participant within each subtype. This in turn was used to approximate the atrophy progression pattern for each $A\beta^+$ participant (t_{ij} , where i refers to one of the k_{opt} subtypes, j refers to each individual within the subtype). Lastly, these individual estimates were combined to robustly estimate the atrophy progression pattern in each subtype (T_i). To estimate the uncertainty of this inferred progression pattern, we performed 100 iterations of bootstrap resampling while keeping the subtype embeddings fixed. This ensured that the definitions of the data-driven subtypes remained consistent across the 100 random bootstrap resampling iterations.

S1.6 SuStaIn

We used w-score volumetric data of $A\beta^+$ participants across all clinical stages to train the SuStaIn model. The sequence of atrophy-events were described using piecewise linear w-score model, with $w = -1$ and $w = -2$ chosen as event thresholds, computed by considering $A\beta^-$ CU participants as reference. The optimum number of subtypes, potentially up to a maximum of 5 subtypes, were estimated using a cross-validation information criteria (CVIC)³⁷ using 3-fold cross-validation strategy. To get a probabilistic estimate of the likely sequence of atrophy-events in each of the estimated subtypes, Markov chain Monte Carlo (MCMC) sampling technique was used to sample and evaluate 1×10^6 potential candidates of sequences. These sequences were used to estimate the atrophy severity of individuals, as measured by the maximum likelihood position along the sequence of events for each subtype, independently for each individual. This approach was used to predict the subtypes and severity of all the participants in the internal as well as in the external cohorts.

S2. Supplementary Figures and Tables

Supplementary Table 1: Cohort characteristics.

Cohort	Data collection period included in this study	Setting	Inclusion criteria	Participant amyloid status derived from
ADC	1998 - 2020	Tertiary memory clinic	Referred to the memory clinic and diagnosed with AD-D, MCI, or SCD in clinic.	CSF, PET visual scores
ADNI	2004 - 2021	Research	Participants in the substudies of ADNI 1, ADNI Go, ADNI 2, and ADNI 3 were included. The inclusion criteria for these studies and the differences between these substudies are detailed by R. Peterson et al., ³⁸ M.W. Weiner et al., ^{39,40}	CSF, PET centiloid scores
AIBL	2007 - 2014	Research	Participant data that was made publicly available on LONI website ida.loni.usc.edu were included. The inclusion criteria for AIBL have been detailed by C. Fowler et al. ¹²	PET centiloid scores*
ARWiBo	2001 – 2013	Memory clinic	Referred to the memory clinic, diagnosed with AD-D, MCI, SCD or CN, without other psychiatric or neurological condition.	CSF
EDSD	2010 – 2016	Research	Participants were enrolled in 11 centers across Europe. The inclusion criteria for EDSD were detailed by Brueggen et al. ⁴¹	CSF
I-ADNI	2009 - 2011	Research	Participants were enrolled in nine Italian memory clinics. The inclusion criteria for I-ADNI has been detailed by Cavado et al. ⁴²	NA
NACC	2005 – 2022	Multiple memory clinics	Each center enrolls its participants according to its own protocol — e.g., clinician referral, self-referral by participants or family members, active recruitment in community organizations.	CSF, PET [†] , Neuropathology
OASIS	NA	Research	Participants in the substudies OASIS-1 and OASIS-2 were included. The Inclusion Criteria for the substudies were detailed in Marcus et al. ⁴³	NA
PharmaCog	2011 - 2015	Research	Participants with MCI were longitudinally followed up across 13 European research centers.	CSF
GMC	2007 - 2021	Memory clinic	Referred to the memory clinic, diagnosed with AD-D, MCI, SCD or CN, without other psychiatric or neurological condition.	PET visual scores

* CSF biomarkers are available in the AIBL study, but were not used in our work.

† PET quantification varied across the different AD research centers that are part of NACC.

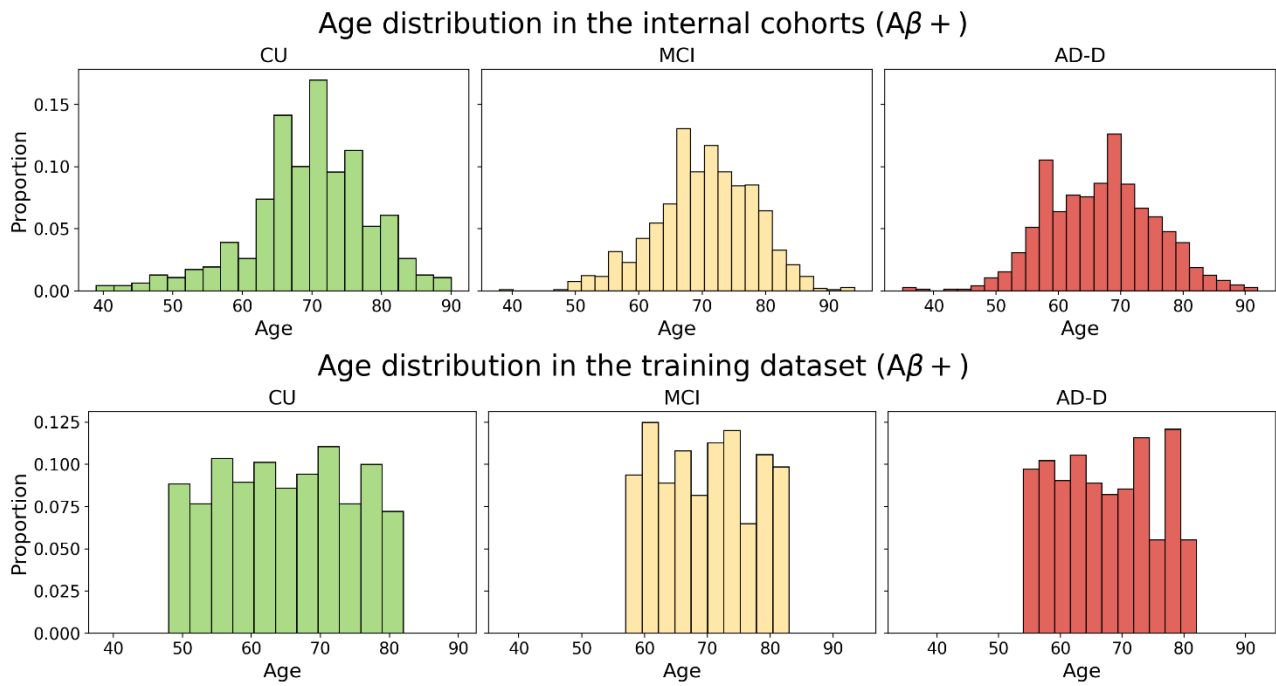
Abbreviations: SCD: Subjective cognitive decline; MCI: Mild cognitive impairment; AD-D: Alzheimer's disease dementia; NA: Not available; CSF: cerebrospinal fluid; PET: positron emission tomography.

Supplementary Table 2: Scanners considered in this study and the sex distribution of the participants scanned in them.

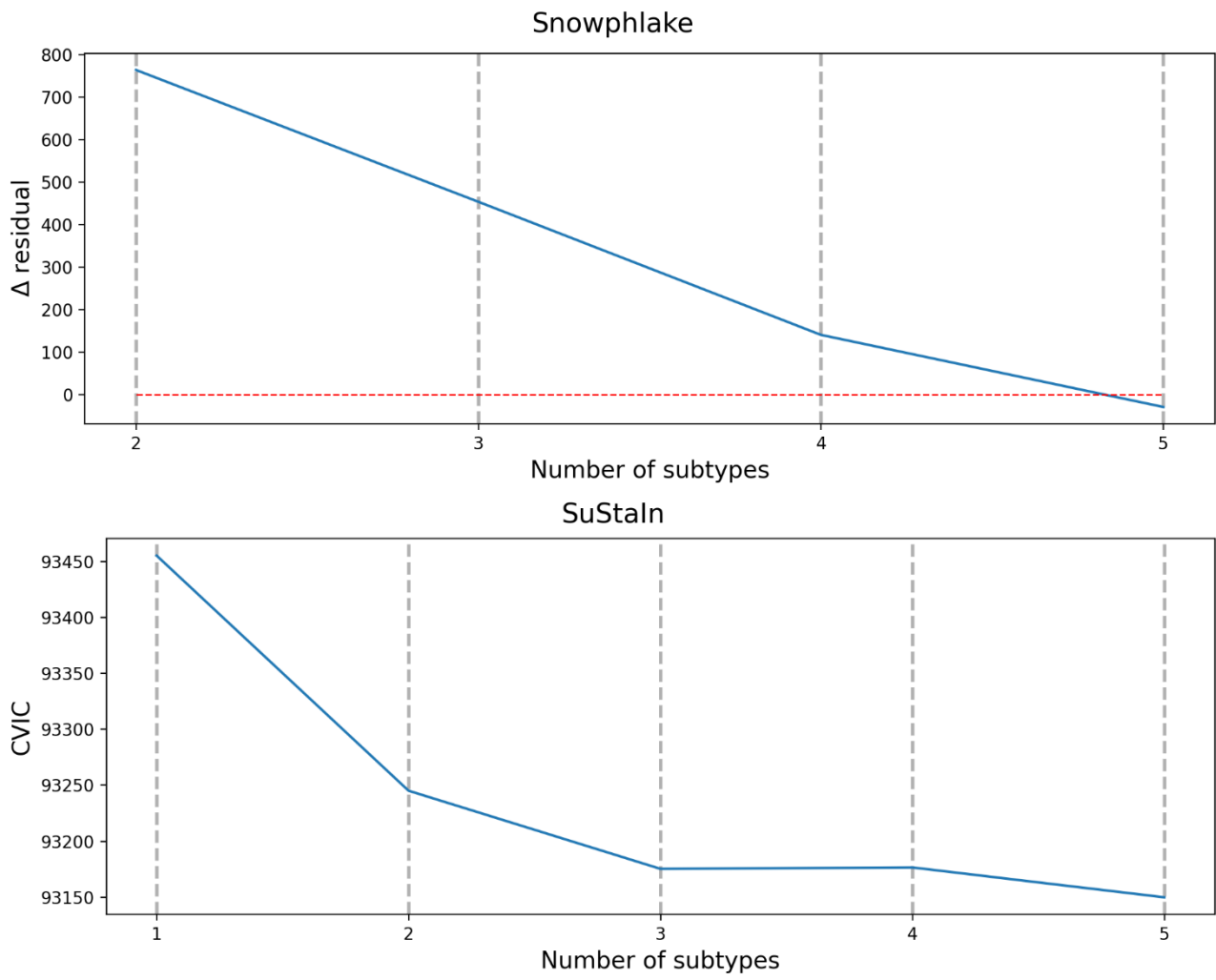
Manufacturer	Scanner Model	Magnetic Field (T)	Number of scans (Female %)
Canon	Titan	3.0	571 (43.6%)
GE	Discovery MR750	3.0	673 (49.9%)
	Discovery MR750w	3.0	23 (34.8%)
	Genesis Signa	1.5	514 (61.9%)
	Signa Excite	1.5	362 (47.2%)
	Signa PET/MR	3.0	33 (48.4%)
	Signa HDx	1.5	30 (40.0%)
	Signa HDx	3.0	96 (42.7%)
	Signa HDxt	1.5	473 (45.5%)
	Signa HDxt	3.0	981 (46.5%)
	Signa Premier	3.0	10 (50.0%)
Philips	Achieva	1.5	11 (36.3%)
	Achieva	3.0	242 (61.6%)
	Achieva dStream	3.0	25 (60.0%)
	Eclipse	1.5	43 (69.8%)
	Gemini	3.0	9 (66.7%)
	Gyrosan NT	1.0	173 (63.6%)
	Ingenia	1.5	18 (55.6%)
	Ingenia	3.0	64 (39.0%)
	Ingenuity	3.0	647 (46.8%)
	Intera	1.0	409 (61.6%)
	Intera	1.5	59 (28.8%)
	Intera	3.0	50 (54.0%)
	Intera Achieva	1.5	5 (20.0%)
	Intera Gyrosan	1.5	27 (40.7%)
Siemens	Aera	1.5	15 (53.3%)
	Allegra	3.0	84 (59.5%)
	Avanto	1.5	294 (50.0%)
	Biograph	3.0	5 (0.0%)
	Espreo	1.5	7 (42.9%)
	Magnetom Expert	1.0	765 (48.8%)
	Magnetom Impact	1.0	9 (77.8%)
	Magnetom Vida	3.0	19 (31.6%)
	Magnetom Vision	1.5	26 (76.9%)
	Prisma	3.0	143 (52.4%)
	Prima fit	3.0	169 (56.8%)
	Skyra	3.0	847 (59.4%)
	Sonata	1.5	403 (46.4%)
	Sonata Vision	1.5	5 (60.0%)
	Symphony	1.5	148 (59.5%)
	Trio	3.0	67 (65.7%)
	Trio Tim	3.0	837 (53.5%)
	Verio	3.0	318 (57.5%)
Vision	1.5	302 (65.2%)	

Supplementary Table 3: Mapping to derive the composite cortical ROIs from Freesurfer cortical parcellation

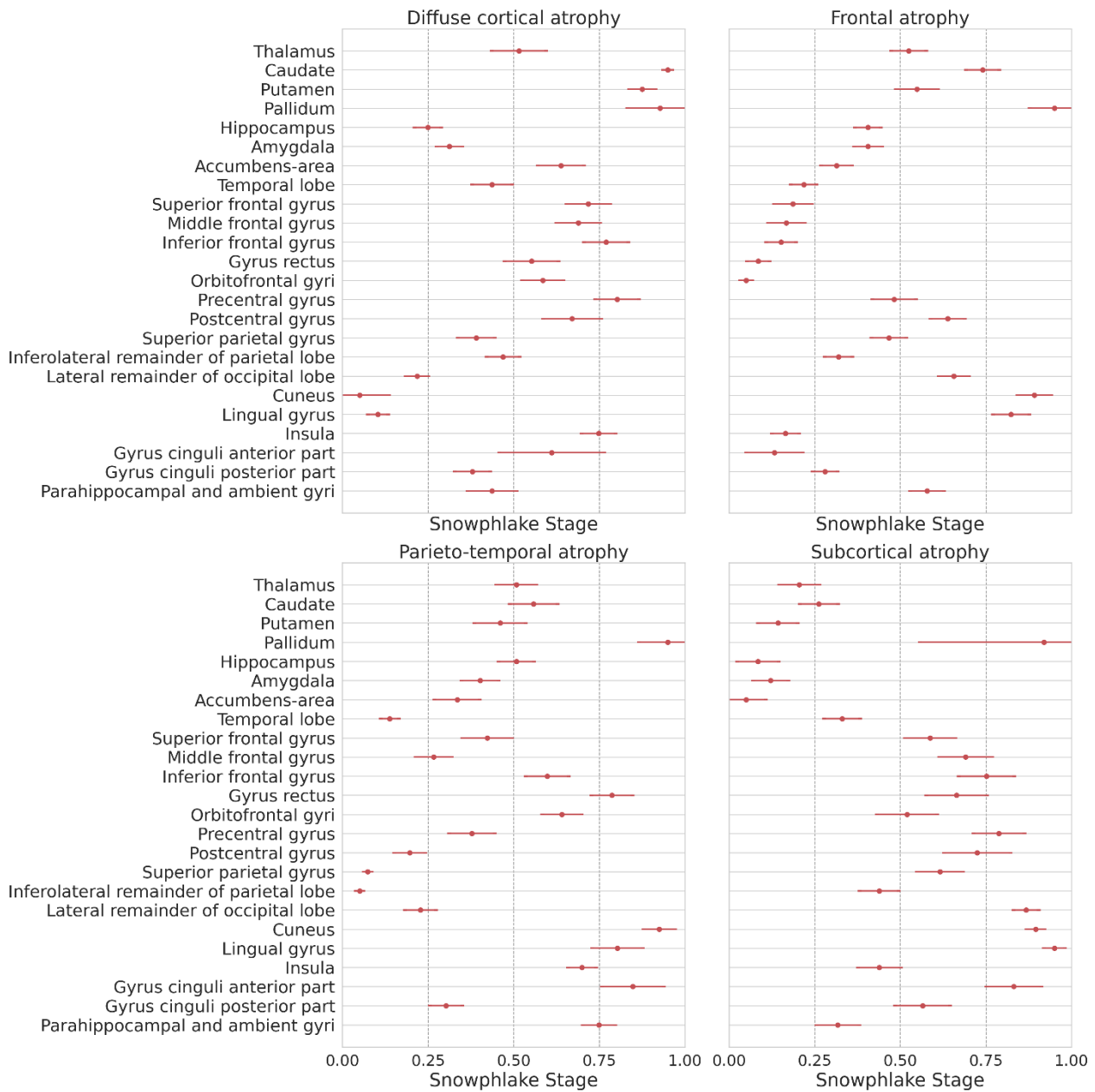
Composite ROI	Freesurfer cortical parcellation
Temporal lobe	bankssts, transversetemporal, superiortemporal, temporalpole, entorhinal, middletemporal, inferiortemporal, fusiform
Superior frontal gyrus	superiorfrontal, frontalpole
Middle frontal gyrus	caudalmiddlefrontal, rostralmiddlefrontal
Inferior frontal gyrus	parsopercularis, parsorbitalis, parstriangularis
Gyrus rectus	medialorbitofrontal
Orbitofrontal gyri	lateralorbitofrontal
Precentral gyrus	precentral, paracentral
Postcentral gyrus	postcentral
Superior parietal gyrus	superiorparietal, precuneus
Inferolateral remainder of parietal lobe	inferiorparietal, supramarginal
Lateral remainder of occipital lobe	lateraloccipital
Cuneus	cuneus, pericalcarine
Lingual gyrus	lingual
Insula	insula
Gyrus cinguli anterior part	caudalanteriorcingulate, rostralanteriorcingulate
Gyrus cinguli posterior part	posteriorcingulate, isthmuscingulate
Parahippocampal and ambient gyri	parahippocampal



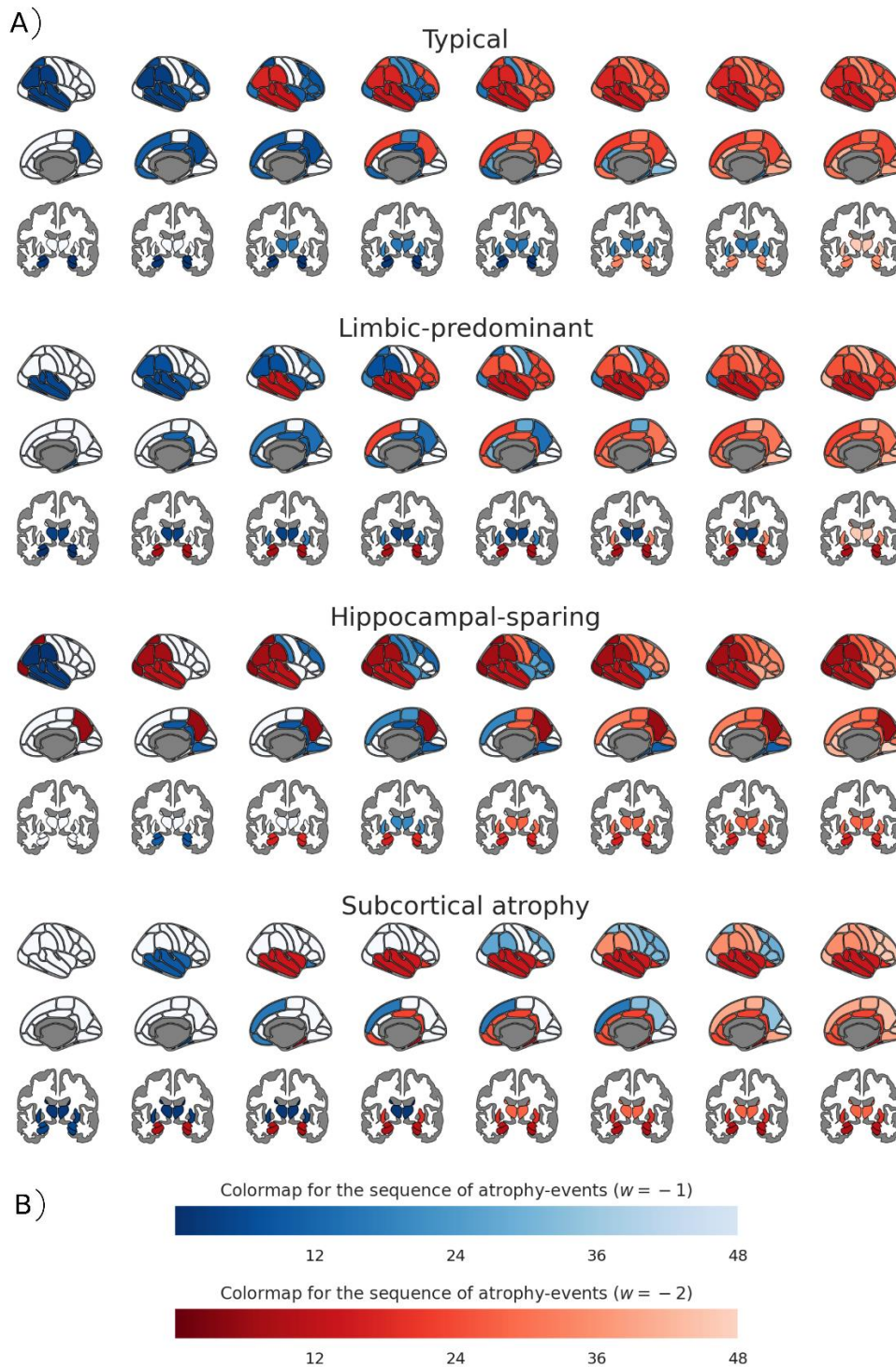
Supplementary Figure 1: Normalized histograms depicting the age distribution of $A\beta+$ participants. The top row shows the age distribution of the $A\beta+$ participants in all the cohorts except the GMC cohort (external). The bottom row shows the age distribution of the participants in the training dataset, selected based on weighted random sampling without replacement. Abbreviations: CU = Cognitively unimpaired; MCI = Mild cognitively impaired; AD-D = Alzheimer’s disease dementia.



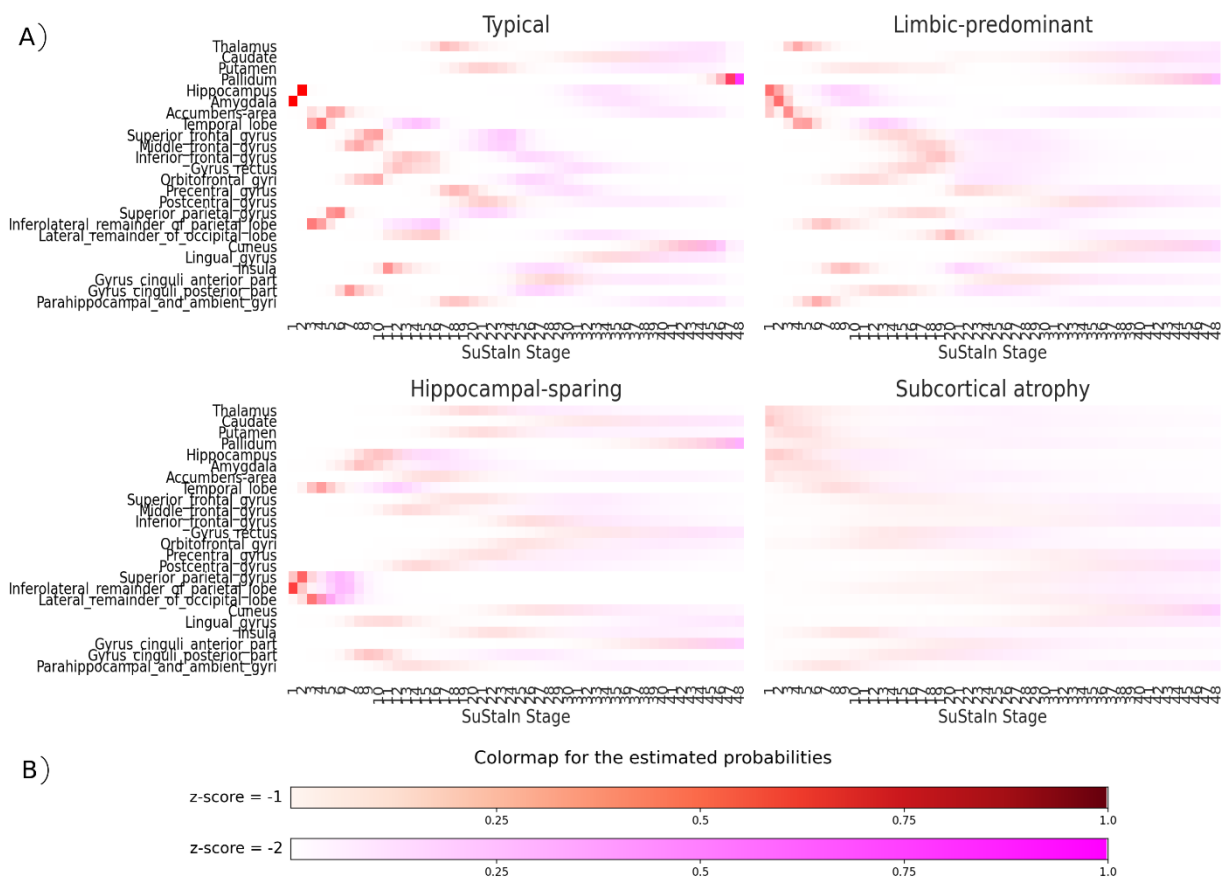
Supplementary Figure 2: Criteria for selecting the optimum number of subtypes for Snowplake (top) and SuStaln (bottom). For Snowplake, the optimum number of subtypes chosen should ideally be higher than the red-dotted line.



Supplementary Figure 3: Snowflake event-centre variance diagram, depicting uncertainty in the atrophy-events estimated in A β ⁺ participants in the training dataset. The event-centres of the impacted brain regions are indicated as points on a normalized staging-scale between 0 and 1, along with their standard errors represented by horizontal bars. Standard errors were estimated from a set of 100 independent bootstrap re-sampling of the training dataset.



Supplementary Figure 4: SuStaIn modelling in the $A\beta^+$ participants in the multi-cohort training dataset. These plots depicts the subtypes and sequence of atrophy-events for each subtype estimated. Within each subtype, the x-axis corresponds to the stage of the disease. Each column shows the brain in its lateral, medial, and subcortical views, with the regions that is expected to be mildly affected ($w = -1$) at this stage for the subtype in shades of blue, severely affected ($w = -2$) in shades of red, and unaffected regions in white. The scale for the color map goes from 1 to 48, the staging scale for SuStaIn, where 1 represents a region getting affected at the earliest stages of the disease and 48 represents late stage.



Supplementary Figure 5: SuStaln Positional Variance Diagrams (PVDs) estimated using MCMC simulations. Each row corresponds to a region and each coloured entry in a PVD marks the probability that the biomarker has surpassed a w -score threshold. The colour scales used for $w = -1$ and $w = -2$ are shown in (B). While a higher w -score reflects a more severe abnormality of the biomarker, a low positional variance, which is marked in a clearer colour, is associated with a higher degree of certainty.

Supplementary Table 4: Characteristics of atrophy-based subtypes assigned by the trained Snowflake model, in the internal and external validation cohorts. * indicates the corresponding measure is significantly different ($p < 0.05$) between the different subtypes (excluding the outliers group) in A β + validation cohort, using ANOVA test for Age and MMSE characteristics, and χ^2 contingency test for APOE4 characteristics. # indicates the significant difference ($p < 0.05$) using similar tests in the clinical validation cohort. Abbreviations: CU: Cognitively unimpaired (Cognitively normal or subjective cognitive decline); MCI: Mild cognitive impairment; AD-D: Alzheimer's disease dementia; NA: Not applicable.

		Diffuse cortical atrophy		Parieto-temporal atrophy		Frontal atrophy		Subcortical atrophy		Outliers	
		A β +	All	A β +	All	A β +	All	A β +	All	A β +	All
Characteristic per diagnostic group		Validation Cohort: ADC $n = 937$ (Aβ+); $n = 2,312$									
Age	CU#	63.3 \pm 9.6	59.9 \pm 10.7	73.0 \pm 1.4	65.0 \pm 11.1	63.2 \pm 9.6	63.6 \pm 9.9	67.6 \pm 7.2	62.6 \pm 10.7	61.5 \pm 10.8	59.3 \pm 10.5
	MCI*#	68.2 \pm 6.1	67.8 \pm 7.3	60.9 \pm 8.1	63.0 \pm 7.5	67.5 \pm 8.0	67.4 \pm 8.5	66.3 \pm 8.1	66.0 \pm 8.4	66.1 \pm 10.2	65.3 \pm 7.9
	AD-D*#	64.4 \pm 7.2	66.3 \pm 7.9	60.2 \pm 7.4	60.9 \pm 7.6	66.1 \pm 7.8	68.6 \pm 8.3	65.7 \pm 7.1	67.3 \pm 7.6	62.6 \pm 8.9	66.6 \pm 9.8
N (%)	CU	27 (27.0%)	176 (31.7%)	2 (2.0%)	15 (2.7%)	21 (21.0%)	109 (19.6%)	32 (32.0%)	141 (25.4%)	18 (18.0%)	115 (20.7%)
	MCI	73 (35.8%)	180 (27.3%)	8 (3.9%)	22 (3.3%)	41 (20.1%)	158 (24.0%)	68 (33.3%)	213 (32.3%)	14 (6.9%)	86 (13.1%)
	AD-D	122 (19.3%)	215 (19.6%)	141 (22.3%)	195 (17.8%)	170 (26.9%)	342 (31.2%)	151 (23.9%)	246 (22.4%)	49 (7.7%)	99 (9.0%)
Sex (n_{male}/n_{female})	CU	11/16	102/74	0/2	9/6	13/8	66/43	21/11	86/55	3/15	27/88
	MCI#	32/41	105/75	6/2	18/4	27/14	115/43	36/32	137/76	6/8	40/46
	AD-D*#	37/85	83/132	67/74	92/103	78/92	166/176	77/74	126/120	11/38	35/64
MMSE	CU	27.8 \pm 1.5	28.2 \pm 1.7	27.5 \pm 0.7	27.9 \pm 1.0	28.6 \pm 1.3	28.1 \pm 1.8	28.0 \pm 1.5	28.4 \pm 1.4	28.2 \pm 1.4	28.2 \pm 2.0
	MCI	26.7 \pm 2.5	26.6 \pm 2.5	24.6 \pm 1.8	25.8 \pm 2.3	26.5 \pm 2.0	26.3 \pm 2.5	26.2 \pm 2.2	26.3 \pm 2.4	27.0 \pm 2.0	26.9 \pm 1.9
	AD-D*#	21.4 \pm 4.8	21.0 \pm 5.1	18.7 \pm 5.3	18.5 \pm 5.5	20.8 \pm 4.9	20.4 \pm 5.3	21.8 \pm 4.4	21.6 \pm 4.6	19.8 \pm 6.0	20.1 \pm 5.6
APOE4 carriers (n_{APOE}/n_{total})	CU	20/27	54/176	1/2	4/15	10/21	30/109	20/32	32/141	10/18	27/115
	MCI	48/73	74/180	5/8	11/22	30/41	68/158	47/68	94/213	10/14	21/86
	AD-D*#	93/122	129/215	78/141	88/195	110/170	165/342	108/151	151/246	30/49	44/99
Characteristic per diagnostic group		Validation Cohort: ADNI $n = 465$ (Aβ+); $n = 1,098$									
		Diffuse cortical atrophy		Parieto-temporal atrophy		Frontal atrophy		Subcortical atrophy		Outliers	
Age	CU	74.8 \pm 6.0	74.8 \pm 5.8	74.0 \pm 5.3	74.4 \pm 4.1	74.8 \pm 6.5	75.3 \pm 5.7	71.8 \pm 4.1	73.5 \pm 4.9	71.2 \pm 5.8	72.1 \pm 5.3
	MCI	71.2 \pm 7.1	71.9 \pm 7.4	71.8 \pm 6.9	70.5 \pm 7.4	73.0 \pm 5.4	71.8 \pm 7.1	73.3 \pm 5.8	73.3 \pm 6.8	70.9 \pm 7.2	69.6 \pm 7.8
	AD-D*#	76.3 \pm 8.5	76.0 \pm 7.7	67.6 \pm 9.6	68.6 \pm 8.1	71.2 \pm 8.8	73.2 \pm 7.3	72.2 \pm 6.8	74.0 \pm 7.3	75.2 \pm 8.7	73.6 \pm 8.4
N (%)	CU	40 (34.8%)	74 (32.5%)	3 (2.6%)	7 (3.1%)	18 (15.7%)	45 (19.7%)	26 (22.6%)	52 (22.8%)	28 (24.3%)	50 (21.9%)
	MCI	73 (30.4%)	207 (30.8%)	13 (5.4%)	40 (6.0%)	50 (20.8%)	144 (21.5%)	69 (28.8%)	178 (26.5%)	35 (14.6%)	102 (15.2%)
	AD-D	35 (31.8%)	69 (34.7%)	14 (12.7%)	21 (10.6%)	12 (10.9%)	31 (15.6%)	36 (32.7%)	53 (26.6%)	13 (11.8%)	25 (12.6%)
Sex (n_{male}/n_{female})	CU	22/18	41/33	2/1	3/4	11/7	30/15	12/14	24/28	5/23	14/36
	MCI#	41/32	102/105	7/6	24/16	33/17	98/46	46/23	117/61	17/18	49/53
	AD-D	17/18	32/37	6/8	10/11	7/5	19/12	17/19	28/25	6/7	10/15
MMSE	CU	29.2 \pm 1.0	29.0 \pm 1.1	29.0 \pm 1.0	29.1 \pm 0.7	29.0 \pm 1.2	29.2 \pm 1.0	29.2 \pm 1.0	29.2 \pm 0.9	29.3 \pm 1.1	29.3 \pm 1.0
	MCI	27.5 \pm 2.2	27.7 \pm 1.9	26.9 \pm 1.8	27.4 \pm 1.8	27.4 \pm 2.0	27.5 \pm 1.8	27.4 \pm 1.7	27.7 \pm 1.8	27.9 \pm 2.0	28.0 \pm 1.8
	AD-D	23.2 \pm 2.1	23.0 \pm 2.1	23.0 \pm 2.4	23.3 \pm 2.4	24.0 \pm 2.0	23.3 \pm 2.1	23.5 \pm 2.5	23.5 \pm 2.3	22.2 \pm 2.7	22.7 \pm 2.5
APOE4 carriers (n_{APOE}/n_{total})	CU	17/40	27/73	2/3	4/7	9/18	16/44	13/26	16/51	17/28	23/48
	MCI	45/69	99/201	11/13	21/40	31/48	66/138	42/68	79/174	23/33	40/94
	AD-D	27/35	48/68	11/14	17/21	10/12	19/31	32/36	41/52	11/13	17/25
		Validation Cohort: AIBL $n = 111$ (Aβ+); $n = 182$									

Characteristic per diagnostic group		Diffuse cortical atrophy		Parieto-temporal atrophy		Frontal atrophy		Subcortical atrophy		Outliers	
Age	CU	77.1±6.3	76.2±5.9	NA	NA	77.6±7.3	77.0±7.3	72.1±6.4	73.4±6.3	73.7±6.9	72.7±6.7
	MCI	76.8±8.1	74.1±7.9	75.0±6.2	73.5±5.9	74.5±4.9	69.7±6.8	75.6±6.2	76.0±5.8	74.2±4.4	76.5±8.5
	AD-D* [#]	80.7±7.5	79.8±5.4	60.3±3.2	60.3±3.2	67.0±7.7	71.8±9.8	75.0±6.8	75.8±6.1	73.0	73.0±7.3
N (%)	CU	21 (34.4%)	29 (32.6%)	0 (0.0%)	0 (0.0%)	10 (16.4%)	14 (15.7%)	7 (11.5%)	11 (12.4%)	23 (37.7%)	35 (39.3%)
	MCI	9 (27.3%)	18 (26.9%)	3 (9.1%)	4 (6.0%)	2 (6.1%)	9 (13.4%)	14 (42.4%)	25 (37.3%)	5 (15.2%)	11 (16.4%)
	AD-D	3 (17.6%)	5 (19.2%)	3 (17.6%)	3 (11.5%)	4 (23.5%)	6 (23.1%)	6 (35.3%)	8 (30.8%)	1 (5.9%)	4 (15.4%)
Sex (n_{male}/n_{female})	CU	12/9	14/15	NA	NA	6/4	8/6	5/2	9/2	6/17	6/29
	MCI	4/5	9/9	1/2	2/2	1/1	5/4	7/7	14/11	1/4	4/7
	AD-D	0/3	1/4	1/2	1/2	2/2	2/4	4/2	5/3	0/1	2/2
MMSE	CU	28.2±1.7	28.3±1.5	NA	NA	28.6±2.0	28.6±1.7	27.7±1.6	27.8±1.4	28.6±1.0	28.6±1.1
	MCI	26.3±1.9	27.4±2.0	26.7±1.5	27.0±1.4	25.0±1.4	27.3±1.6	25.5±2.6	26.4±2.3	27.6±1.9	27.6±1.9
	AD-D*	18.7±1.5	19.0±2.1	18.7±3.1	18.7±3.1	22.8±1.7	19.7±6.9	23.2±3.0	22.4±3.1	22.0	23.8±3.1
APOE4 carriers (n_{APOE}/n_{total})	CU	9/21	9/29	NA	NA	7/10	9/14	4/7	5/11	9/23	10/35
	MCI	7/9	8/17	2/3	2/4	1/2	3/9	11/13	15/24	2/5	2/11
	AD-D	2/2	4/4	1/3	1/3	3/4	4/6	3/5	5/7	1/1	2/4
Characteristic per diagnostic group	Validation Cohort: ARWiBo $n = 17$ ($A\beta+$); $n = 767$										
	Characteristic per diagnostic group		Diffuse cortical atrophy		Parieto-temporal atrophy		Frontal atrophy		Subcortical atrophy		Outliers
Age	CU [#]	NA	43.3±10.9	NA	54.5±15.8	NA	56.0±12.9	NA	49.3±16.2	NA	53.5±15.0
	MCI [#]	72.0	65.8±8.6	70.0	68.0±4.4	69.8±10.9	73.5±8.9	72.0±1.4	73.4±7.0	77.0±0.0	68.2±8.7
	AD-D [#]	61.5±8.3	65.9±10.8	NA	59.1±7.8	62.5±0.7	72.9±6.7	NA	71.8±8.0	67.0	72.3±6.9
N (%)	CU	0 (NA)	135 (22.8%)	0 (NA)	18 (3.0%)	0 (NA)	42 (7.1%)	0 (NA)	115 (19.4%)	0 (NA)	283 (47.7%)
	MCI	1 (10.0%)	16 (16.2%)	1 (10.0%)	3 (3.0%)	4 (40.0%)	19 (19.2%)	2 (20.0%)	17 (17.2%)	2 (20.0%)	44 (44.4%)
	AD-D	4 (57.1%)	10 (13.3%)	0 (0.0%)	7 (9.3%)	2 (28.6%)	30 (40.0%)	0 (0.0%)	14 (18.7%)	1 (14.3%)	14 (18.7%)
Sex (n_{male}/n_{female})	CU	NA	53/82	NA	9/9	NA	21/21	NA	36/79	NA	111/172
	MCI	0/1	4/12	1/0	1/2	1/3	6/13	1/1	10/7	1/1	15/29
	AD-D	0/4	2/8	NA	5/2	2/0	9/21	NA	7/7	0/1	2/12
MMSE	CU	NA	28.9±1.4	NA	28.9±1.2	NA	28.8±1.5	NA	28.6±1.9	NA	28.6±1.7
	MCI	29.0	26.3±2.3	26.0	26.0±2.0	26.0±2.9	26.4±3.0	23.0±9.9	24.1±3.4	22.5±9.2	25.6±3.9
	AD-D	23.5±8.0	23.8±5.5	NA	20.3±4.4	26.5±0.7	22.7±6.0	NA	24.3±4.1	27.0	23.4±5.1
APOE4 carriers (n_{APOE}/n_{total})	CU	NA	12/63	NA	0/9	NA	3/20	NA	13/52	NA	27/114
	MCI	1/1	6/12	1/1	1/2	0/2	2/10	0/1	4/8	0/1	9/23
	AD-D [#]	2/3	4/5	NA	0/6	1/2	8/18	NA	1/4	1/1	4/6
Characteristic per diagnostic group	Validation Cohort: EDSD $n = 28$ ($A\beta+$); $n = 347$										
	Characteristic per diagnostic group		Diffuse cortical atrophy		Parieto-temporal atrophy		Frontal atrophy		Subcortical atrophy		Outliers
Age	CU	NA	68.4±5.2	NA	67.5±10.6	NA	69.3±5.5	NA	69.3±6.8	NA	67.7±6.1
	MCI	69.6±7.2	68.5±7.3	66.0	74.3±6.7	68.3±2.6	71.7±6.7	66.7±9.2	71.4±7.2	77.3±6.0	70.9±8.4
	AD-D	NA	73.1±6.3	NA	67.2±9.9	NA	73.5±8.8	73.0	72.4±7.6	NA	75.9±8.5
N (%)	CU	0 (NA)	39 (28.7%)	0 (NA)	2 (1.5%)	0 (NA)	24 (17.6%)	0 (NA)	27 (19.9%)	0 (NA)	44 (32.4%)
	MCI	10 (37.0%)	25 (26.6%)	1 (3.7%)	6 (6.4%)	6 (22.2%)	18 (19.1%)	7 (25.9%)	22 (23.4%)	3 (11.1%)	23 (24.5%)
	AD-D	0 (0.0%)	21 (17.9%)	0 (0.0%)	12 (10.3%)	0 (0.0%)	31 (26.5%)	1 (100.0%)	41 (35.0%)	0 (0.0%)	12 (10.3%)
	CU	NA	15/24	NA	1/1	NA	12/12	NA	18/9	NA	19/25

Sex (n_{male}/n_{female})	MCI	7/3	15/10	1/0	5/1	4/2	8/10	5/2	12/10	1/2	12/11
	AD-D	NA	13/8	NA	3/9	NA	11/20	1/0	18/23	NA	4/8
MMSE	CU	NA	28.6±1.3	NA	29.5±0.7	NA	28.8±1.0	NA	28.9±1.1	NA	28.7±1.1
	MCI	26.6±2.1	27.0±1.6	25.0	27.2±1.3	25.0±2.5	26.5±2.1	26.3±3.0	25.8±2.3	25.3±0.6	26.1±2.1
	AD-D [#]	NA	21.8±4.2	NA	13.0±6.1	NA	19.5±5.0	29.0	22.6±2.9	NA	20.6±5.6
APOE4 carriers (n_{APOE}/n_{total})	CU	0/0	5/16	0/0	1/1	0/0	4/10	0/0	3/11	0/0	5/18
	MCI	4/7	6/10	0/1	1/3	3/4	3/8	6/7	7/11	3/3	9/16
	AD-D	0/0	3/7	0/0	3/3	0/0	7/12	0/0	8/13	0/0	1/5
Characteristic per diagnostic group	Validation Cohort: I-ADNI $n = 0$ ($A\beta+$); $n = 169$										
		Diffuse cortical atrophy		Parieto-temporal atrophy		Frontal atrophy		Subcortical atrophy		Outliers	
Age	CU	NA	NA	NA	NA	NA	59.5±6.4	NA	70.7±8.0	NA	79.5±9.2
	MCI	NA	68.0±7.6	NA	70.5±6.4	NA	75.4±6.2	NA	75.0±1.9	NA	69.4±4.3
	AD-D [#]	NA	74.3±7.3	NA	66.3±7.9	NA	72.5±8.0	NA	78.4±5.3	NA	71.1±7.5
N (%)	CU	0 (NA)	0 (0.0%)	0 (NA)	0 (0.0%)	0 (NA)	2 (28.6%)	0 (NA)	3 (42.9%)	0 (NA)	2 (28.6%)
	MCI	0 (NA)	16 (45.7%)	0 (NA)	2 (5.7%)	0 (NA)	7 (20.0%)	0 (NA)	5 (14.3%)	0 (NA)	5 (14.3%)
	AD-D	0 (NA)	40 (31.5%)	0 (NA)	24 (18.9%)	0 (NA)	29 (22.8%)	0 (NA)	18 (14.2%)	0 (NA)	16 (12.6%)
Sex (n_{male}/n_{female})	CU	NA	NA	NA	NA	NA	1/1	NA	3/0	NA	0/2
	MCI	NA	10/6	NA	1/1	NA	5/2	NA	1/4	NA	1/4
	AD-D	NA	17/23	NA	6/18	NA	10/19	NA	6/12	NA	3/13
MMSE	CU	NA	NA	NA	NA	NA	28.5±2.1	NA	29.3±0.6	NA	28.5±2.1
	MCI	NA	27.1±1.7	NA	28.5±2.1	NA	26.3±1.9	NA	24.0±4.1	NA	27.0±2.9
	AD-D	NA	20.4±3.7	NA	18.8±4.9	NA	21.0±4.4	NA	20.2±4.1	NA	20.9±3.8
APOE4 carriers (n_{APOE}/n_{total})	CU	NA	0/0	NA	0/0	NA	0/0	NA	0/0	NA	0/0
	MCI	NA	0/0	NA	0/0	NA	0/0	NA	0/0	NA	0/0
	AD-D	NA	0/0	NA	0/0	NA	0/0	NA	0/0	NA	0/0
Characteristic per diagnostic group	Validation Cohort: NACC $n = 190$ ($A\beta+$); $n = 1,085$										
		Diffuse cortical atrophy		Parieto-temporal atrophy		Frontal atrophy		Subcortical atrophy		Outliers	
Age	CU	NA	NA	NA	NA	NA	NA	NA	NA	NA	NA
	MCI [#]	76.1±11.9	73.4±10.0	64.0±15.6	67.3±13.5	76.4±5.4	74.9±9.0	76.4±6.0	74.2±8.4	73.0±14.7	71.4±11.1
	AD-D ^{*#}	70.2±10.9	73.0±9.6	62.1±9.0	64.5±10.6	74.4±11.0	73.2±10.3	74.8±9.8	74.6±9.0	69.2±10.3	69.2±12.7
N (%)	CU	0 (NA)	0 (NA)	0 (NA)	0 (NA)	0 (NA)	0 (NA)	0 (NA)	0 (NA)	0 (NA)	0 (NA)
	MCI	25 (39.1%)	159 (28.1%)	2 (3.1%)	20 (3.5%)	8 (12.5%)	118 (20.8%)	18 (28.1%)	166 (29.3%)	11 (17.2%)	103 (18.2%)
	AD-D	25 (19.8%)	109 (21.0%)	19 (15.1%)	58 (11.2%)	34 (27.0%)	148 (28.5%)	31 (24.6%)	128 (24.7%)	17 (13.5%)	76 (14.6%)
Sex (n_{male}/n_{female})	CU	NA	NA	NA	NA	NA	NA	NA	NA	NA	NA
	MCI	11/14	65/94	1/1	12/8	4/4	55/63	12/6	87/79	4/7	25/78
	AD-D	12/13	48/61	12/7	26/32	20/14	68/80	19/12	66/62	9/8	32/44
MMSE	CU	NA	NA	NA	NA	NA	NA	NA	NA	NA	NA
	MCI [#]	25.0±2.0	26.0±3.2	23.0	25.6±3.8	25.7±2.3	26.1±3.6	26.4±2.5	27.1±2.6	28.3±1.4	27.3±2.5
	AD-D ^{*#}	23.9±3.9	22.2±5.4	18.7±7.3	18.6±6.5	20.1±6.1	21.4±5.4	22.3±4.4	21.2±5.2	19.2±7.0	20.6±6.4
APOE4 carriers (n_{APOE}/n_{total})	CU	NA	NA	NA	NA	NA	NA	NA	NA	NA	NA
	MCI	13/24	61/140	2/2	6/16	5/8	43/103	14/18	69/141	6/11	32/87
	AD-D	15/24	54/90	13/17	31/49	14/31	56/124	19/30	66/112	12/17	26/58
	Validation Cohort: OASIS $n = 0$ ($A\beta+$); $n = 302$										

Characteristic per diagnostic group		Diffuse cortical atrophy		Parieto-temporal atrophy		Frontal atrophy		Subcortical atrophy		Outliers	
Age	CU	NA	66.7±13.7	NA	63.5±23.3	NA	68.3±12.7	NA	70.0±12.0	NA	70.7±10.5
	MCI	NA	78.2±8.3	NA	68.5±2.1	NA	73.4±7.6	NA	76.3±5.0	NA	75.1±8.3
	AD-D [#]	NA	79.7±7.5	NA	NA	NA	66.0±5.6	NA	75.1±4.5	NA	76.2±4.3
N (%)	CU	0 (NA)	34 (18.4%)	0 (NA)	2 (1.1%)	0 (NA)	29 (15.7%)	0 (NA)	34 (18.4%)	0 (NA)	86 (46.5%)
	MCI	0 (NA)	22 (24.4%)	0 (NA)	2 (2.2%)	0 (NA)	14 (15.6%)	0 (NA)	29 (32.2%)	0 (NA)	23 (25.6%)
	AD-D	0 (NA)	11 (40.7%)	0 (NA)	0 (0.0%)	0 (NA)	3 (11.1%)	0 (NA)	8 (29.6%)	0 (NA)	5 (18.5%)
Sex (n_{male}/n_{female})	CU	NA	13/21	NA	0/2	NA	10/19	NA	17/17	NA	13/73
	MCI	NA	10/12	NA	2/0	NA	10/4	NA	14/15	NA	9/14
	AD-D [#]	NA	0/11	NA	NA	NA	1/2	NA	4/4	NA	2/3
MMSE	CU	NA	29.1±1.2	NA	29.5±0.7	NA	29.6±0.6	NA	28.9±1.2	NA	29.2±0.9
	MCI	NA	25.4±3.7	NA	25.0±2.8	NA	26.1±2.7	NA	26.2±2.6	NA	27.0±3.2
	AD-D	NA	22.2±3.8	NA	NA	NA	22.3±7.1	NA	21.6±4.3	NA	22.4±1.9
APOE4 carriers (n_{APOE}/n_{total})	CU	NA	0/0	NA	0/0	NA	0/0	NA	0/0	NA	0/0
	MCI	NA	0/0	NA	0/0	NA	0/0	NA	0/0	NA	0/0
	AD-D	NA	0/0	NA	0/0	NA	0/0	NA	0/0	NA	0/0
Characteristic per diagnostic group	Validation Cohort: PharmaCog $n = 48$ (Aβ+); $n = 100$										
	Characteristic per diagnostic group		Diffuse cortical atrophy		Parieto-temporal atrophy		Frontal atrophy		Subcortical atrophy		Outliers
Age	CU	NA	NA	NA	NA	NA	NA	NA	NA	NA	NA
	MCI	71.3±7.7	70.0±8.1	75.0±1.4	77.0±3.6	70.7±6.6	67.9±6.5	68.3±6.1	67.5±7.5	70.2±5.2	68.0±7.1
	AD-D	NA	NA	NA	NA	NA	NA	NA	NA	NA	NA
N (%)	CU	0 (NA)	0 (NA)	0 (NA)	0 (NA)	0 (NA)	0 (NA)	0 (NA)	0 (NA)	0 (NA)	0 (NA)
	MCI	11 (22.9%)	26 (26.0%)	2 (4.2%)	3 (3.0%)	10 (20.8%)	19 (19.0%)	17 (35.4%)	27 (27.0%)	8 (16.7%)	25 (25.0%)
	AD-D	0 (NA)	0 (NA)	0 (NA)	0 (NA)	0 (NA)	0 (NA)	0 (NA)	0 (NA)	0 (NA)	0 (NA)
Sex (n_{male}/n_{female})	CU	NA	NA	NA	NA	NA	NA	NA	NA	NA	NA
	MCI	5/6	11/15	1/1	2/1	4/6	8/11	8/9	12/15	3/5	7/18
	AD-D	NA	NA	NA	NA	NA	NA	NA	NA	NA	NA
MMSE	CU	NA	NA	NA	NA	NA	NA	NA	NA	NA	NA
	MCI	26.4±1.9	27.2±1.7	24.5±2.1	26.3±3.5	25.6±1.8	25.9±1.5	26.1±1.4	26.2±1.5	26.9±2.0	27.1±2.1
	AD-D	NA	NA	NA	NA	NA	NA	NA	NA	NA	NA
APOE4 carriers (n_{APOE}/n_{total})	CU	NA	NA	NA	NA	NA	NA	NA	NA	NA	NA
	MCI* [#]	5/11	6/26	1/2	1/3	9/10	10/19	14/16	17/26	5/7	7/24
	AD-D	NA	NA	NA	NA	NA	NA	NA	NA	NA	NA
Characteristic per diagnostic group	Validation Cohort: GMC (external)										
	Characteristic per diagnostic group		Diffuse cortical atrophy		Parieto-temporal atrophy		Frontal atrophy		Subcortical atrophy		Outliers
Age	CU	73.5±3.5	67.8±11.1	NA	66.4±3.7	67.5±6.8	64.8±9.3	71.3±1.7	66.3±11.8	74.0±2.0	64.3±10.3
	MCI	72.6±7.1	73.8±9.9	69.5±8.1	73.4±9.1	73.7±2.8	70.0±9.5	73.9±5.1	72.8±9.9	73.2±8.1	71.0±11.4
	AD-D	69.9±7.5	76.5±8.6	71.2±9.2	72.3±9.2	66.8±6.5	75.4±6.9	68.4±14.4	77.5±10.0	77.0±2.0	80.1±4.1
N (%)	CU	2 (12.5%)	46 (27.5%)	NA	5 (3.0%)	4 (25.0%)	28 (16.8%)	8 (50.0%)	38 (22.8%)	2 (12.5%)	50 (29.9%)
	MCI	26 (24.1%)	112 (26.7%)	4 (3.7%)	15 (3.6%)	9 (8.3%)	69 (16.5%)	51 (47.2%)	134 (32.0%)	18 (16.7%)	89 (21.2%)
	AD-D	13 (37.1%)	40 (29.2%)	5 (14.3%)	8 (5.8%)	6 (17.1%)	35 (25.6%)	9 (25.7%)	40 (29.2%)	2 (5.7%)	14 (10.2%)
	CU	1/1	21/25	NA	3/2	2/2	11/17	3/5	14/24	0/2	8/42

Sex ($n_{male}/$ n_{female})	MCI	11/15	53/59	3/1	8/7	7/2	36/33	19/32	61/73	6/12	25/64
	AD-D	10/3	21/19	2/3	2/6	4/2	12/23	3/6	16/24	2/0	6/8
MMSE	CU	28.5±0.5	28.4±1.5	NA	28.2±1.5	27.8±1.1	28.5±1.1	28.5±0.9	28.6±1.4	29.0±0.0	28.3±1.6
	MCI	25.3±2.9	25.4±3.3	20.3±9.0	24.6±5.9	26.3± 2.6	26.1±2.6	25.1±2.9	25.5±3.3	26.1±2.6	25.6±3.5
	AD-D	19.3±5.0	19.4±4.6	20.2±4.2	18.3±5.3	20.7±4.1	19.5±5.3	19.1±4.6	20.8±4.6	20.5±4.5	21.8± 3.6
APOE4 carriers ($n_{APOE}/$ n_{total})	CU	1/2	5/6	NA	0/2	1/2	3/9	4/7	5/14	0/1	4/7
	MCI	9/13	13/25	1/1	2/2	4/7	8/15	9/15	13/25	2/5	4/12
	AD-D	0/1	2/3	1/1	1/1	0/1	1/2	0/0	0/1	0/0	1/1

Supplementary Table 5: Characteristics of atrophy-based subtypes assigned by the trained SuStaIn model in the internal and external validation cohorts. * indicates the corresponding measure is significantly different ($p < 0.05$) between the different subtypes (excluding the outliers group) in A β ⁺ validation cohort, using ANOVA test for Age and MMSE characteristics, and χ^2 contingency test for APOE4 and Sex characteristics. # indicates the significant difference ($p < 0.05$) using similar tests in the clinical validation cohort. Abbreviations: CU: Cognitively unimpaired (Cognitively normal or subjective cognitive decline); MCI: Mild cognitive impairment; AD-D: Alzheimer’s disease dementia; NA: Not applicable.

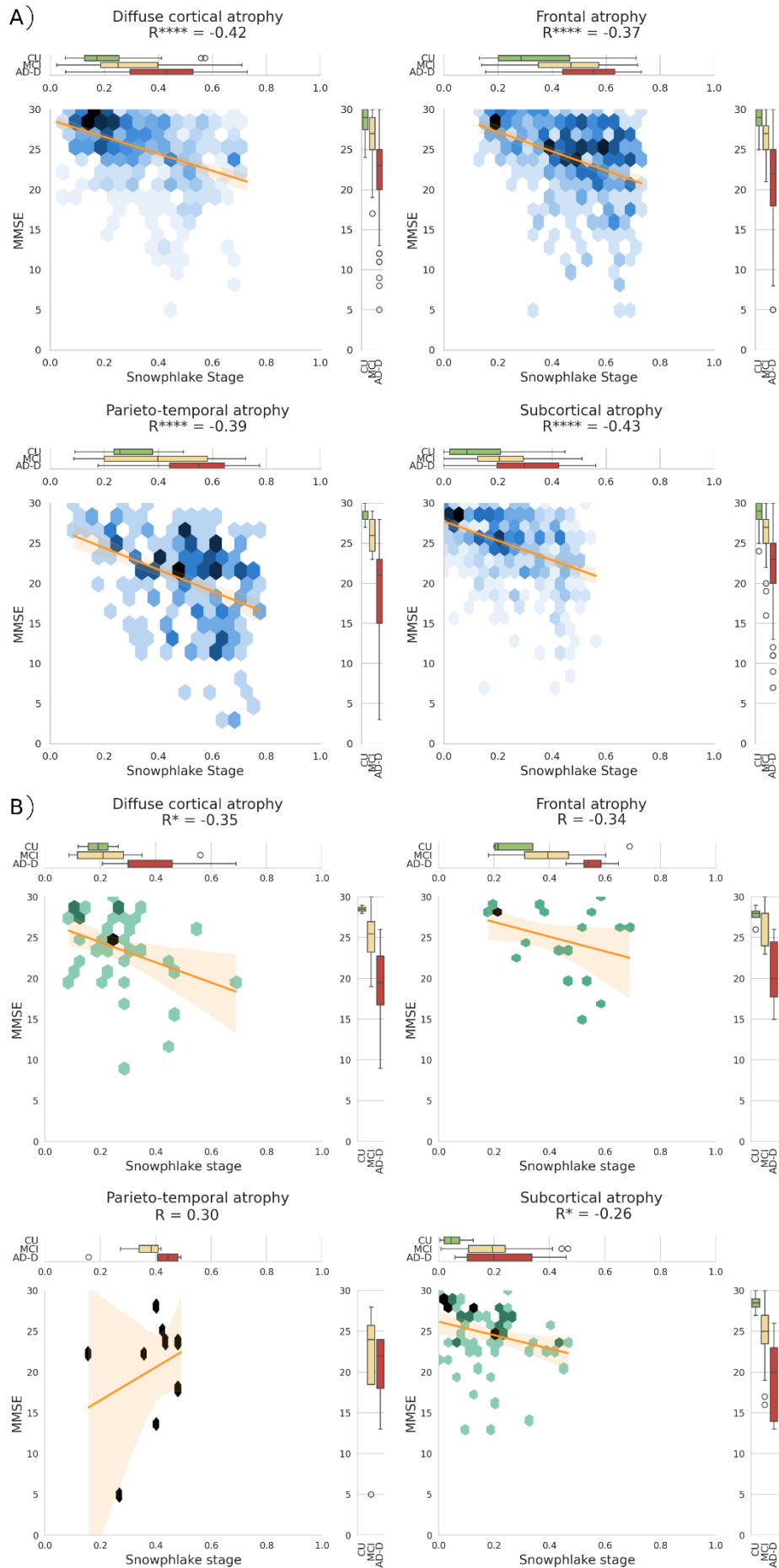
		Typical		Limbic-predominant		Hippocampal-sparing		Subcortical atrophy		Outliers	
		A β ⁺	All	A β ⁺	All	A β ⁺	All	A β ⁺	All	A β ⁺	All
Characteristic per diagnostic group		Validation Cohort: ADC $n = 937$ (Aβ⁺); $n = 2,312$									
Age	CU [#]	66.9±8.6	64.8±9.7	63.8±10.6	60.1±13.6	61.0±15.6	59.0±12.4	NA	68.5±2.1	63.0±9.3	59.5±9.9
	MCI [#]	67.9±7.3	67.9±7.7	65.7±8.5	65.6±9.4	64.5±8.5	65.1±8.0	72.5±6.4	71.1±5.6	66.3±7.7	65.1±7.6
	AD-D ^{*#}	63.8±7.8	65.9±8.5	67.0±7.1	69.7±7.8	60.0±6.7	60.9±7.0	70.3±4.0	71.1±4.7	64.7±9.0	66.8±8.8
N (%)	CU	38 (38.0%)	186 (33.5%)	9 (9.0%)	62 (11.2%)	2 (2.0%)	14 (2.5%)	0 (0.0%)	2 (0.4%)	51 (51.0%)	292 (52.5%)
	MCI	106 (52.0%)	314 (47.6%)	37 (18.1%)	126 (19.1%)	12 (5.9%)	25 (3.8%)	2 (1.0%)	12 (1.8%)	47 (23.0%)	182 (27.6%)
	AD-D	368 (58.1%)	625 (57.0%)	139 (22.0%)	264 (24.1%)	85 (13.4%)	125 (11.4%)	3 (0.5%)	8 (0.7%)	38 (6.0%)	75 (6.8%)
Sex (n_{male}/n_{female})	CU	19/19	112/74	7/2	46/16	0/2	7/7	0/0	2/0	22/29	123/169
	MCI	58/48	215/99	23/14	82/44	8/4	16/9	1/1	8/4	17/30	94/88
	AD-D	162/206	286/339	70/69	143/121	32/53	53/72	1/2	4/4	5/33	16/59
MMSE	CU	27.7±1.6	28.1±1.6	29.0±1.3	28.4±1.6	27.5±0.7	28.1±1.3	NA	29.0±0.0	28.2±1.2	28.3±1.8
	MCI*	26.7±2.1	26.6±2.4	25.7±2.2	26.0±2.3	24.9±3.4	26.0±2.9	24.5±0.7	27.3±2.2	26.8±2.2	26.6±2.3
	AD-D ^{*#}	20.6±5.2	20.3±5.3	21.0±4.3	20.8±5.0	18.7±5.7	18.3±5.5	20.0±4.6	22.9±3.8	23.4±3.2	23.5±3.3
APOE4 carriers (n_{APOE}/n_{total})	CU	23/38	59/186	7/9	13/62	1/2	3/14	0/0	0/2	30/51	72/292
	MCI	72/106	132/314	27/37	54/126	9/12	14/25	1/2	3/12	31/47	65/182
	AD-D ^{*#}	225/368	298/625	107/139	156/264	57/85	75/125	3/3	6/8	27/38	42/75
Characteristic per diagnostic group		Validation Cohort: ADNI $n = 465$ (Aβ⁺); $n = 1,098$									
		Typical		Limbic-predominant		Hippocampal-sparing		Subcortical atrophy		Outliers	
Age	CU	75.9±6.4	76.0±5.4	70.2±4.0	71.9±4.3	85.0	78.3±4.5	76.0	77.0±1.4	72.5±5.4	73.1±5.5
	MCI	72.6±6.0	73.1±7.1	72.8±4.8	73.0±5.6	69.3±12.5	68.7±9.7	77.0±2.6	73.3±4.9	71.1±7.2	70.3±7.7
	AD-D ^{*#}	73.2±9.2	74.3±8.1	74.2±6.7	74.9±7.1	66.5±7.1	68.0±6.8	NA	NA	76.9±8.2	75.6±7.8
N (%)	CU	25 (21.7%)	62 (27.2%)	6 (5.2%)	10 (4.4%)	1 (0.9%)	6 (2.6%)	1 (0.9%)	2 (0.9%)	82 (71.3%)	148 (64.9%)
	MCI	114 (47.5%)	274 (40.8%)	42 (17.5%)	106 (15.8%)	6 (2.5%)	18 (2.7%)	3 (1.2%)	6 (0.9%)	75 (31.2%)	267 (39.8%)
	AD-D	52 (47.3%)	100 (50.3%)	31 (28.2%)	55 (27.6%)	13 (11.8%)	21 (10.6%)	0 (0.0%)	0 (0.0%)	14 (12.7%)	23 (11.6%)
Sex (n_{male}/n_{female})	CU	19/6	40/22	5/1	8/2	1/0	4/2	1/0	2/0	26/56	58/90
	MCI	70/44	175/99	26/16	68/38	5/1	12/6	3/0	5/1	40/35	130/137
	AD-D	27/25	55/45	15/16	27/28	6/7	10/11	0/0	0/0	5/9	7/16
MMSE	CU	28.8±1.4	29.1±1.1	28.7±1.0	28.8±1.0	28.0	28.8±0.4	29.0	29.5±0.7	29.3±0.9	29.2±1.0
	MCI	27.3±2.1	27.3±1.9	27.4±1.7	27.6±1.8	26.2±1.5	27.6±1.5	27.7±0.6	28.7±1.2	27.9±2.0	28.1±1.7
	AD-D	23.4±2.1	23.3±2.1	23.3±2.4	23.2±2.2	22.4±2.2	22.4±2.2	NA	NA	23.2±3.0	23.2±2.8
APOE4 carriers (n_{APOE}/n_{total})	CU	10/25	19/62	3/6	3/10	0/1	3/6	0/1	0/2	45/82	61/143
	MCI	79/110	146/266	24/40	50/103	2/6	6/18	2/3	3/5	45/72	100/255
	AD-D	40/52	69/99	27/31	38/54	13/13	19/21	0/0	0/0	11/14	16/23

n_{total}											
Characteristic per diagnostic group		Validation Cohort: AIBL $n = 111$ (Aβ+); $n = 182$									
		Typical		Limbic-predominant		Hippocampal-sparing		Subcortical atrophy		Outliers	
Age	CU	78.0 \pm 6.3	77.1 \pm 5.6	75.5 \pm 6.4	72.7 \pm 6.7	82.7 \pm 3.5	82.7 \pm 3.5	NA	NA	74.3 \pm 6.8	73.7 \pm 6.7
	MCI [#]	74.5 \pm 6.2	73.9 \pm 6.4	79.7 \pm 7.2	78.9 \pm 5.4	NA	NA	NA	NA	74.8 \pm 5.4	73.7 \pm 7.8
	AD-D [#]	67.4 \pm 11.2	71.5 \pm 10.2	75.5 \pm 6.2	76.6 \pm 6.1	61.0 \pm 4.2	61.0 \pm 4.2	NA	NA	NA	73.0 \pm 9.0
N (%)	CU	10 (16.4%)	16 (18.0%)	2 (3.3%)	3 (3.4%)	3 (4.9%)	3 (3.4%)	0 (0.0%)	0 (0.0%)	46 (75.4%)	67 (75.3%)
	MCI	15 (45.5%)	22 (32.8%)	6 (18.2%)	11 (16.4%)	0 (0.0%)	0 (0.0%)	0 (0.0%)	0 (0.0%)	12 (36.4%)	34 (50.7%)
	AD-D	5 (29.4%)	8 (30.8%)	10 (58.8%)	13 (50.0%)	2 (11.8%)	2 (7.7%)	0 (0.0%)	0 (0.0%)	0 (0.0%)	3 (11.5%)
Sex (n_{male}/n_{female})	CU	7/3	9/7	1/1	2/1	3/0	3/0	NA	NA	18/28	23/44
	MCI	9/6	13/9	3/3	6/5	NA	NA	NA	NA	2/10	15/19
	AD-D	1/4	2/6	5/5	6/7	1/1	1/1	NA	NA	0/0	2/1
MMSE	CU	28.3 \pm 1.7	28.4 \pm 1.5	26.0 \pm 0.0	26.3 \pm 0.6	27.3 \pm 2.1	27.3 \pm 2.1	NA	NA	28.5 \pm 1.4	28.6 \pm 1.3
	MCI	25.0 \pm 2.0	25.9 \pm 2.2	26.0 \pm 2.3	26.8 \pm 2.0	NA	NA	NA	NA	27.6 \pm 1.7	27.9 \pm 1.5
	AD-D	20.4 \pm 2.1	18.4 \pm 5.4	22.4 \pm 3.1	21.9 \pm 3.0	19.0 \pm 4.2	19.0 \pm 4.2	NA	NA	NA	24.3 \pm 3.5
APOE4 carriers (n_{APOE}/n_{total})	CU	5/10	5/16	1/2	2/3	2/3	2/4	NA	NA	21/46	24/67
	MCI	10/14	13/21	6/6	7/11	NA	NA	NA	NA	7/12	10/33
	AD-D [#]	4/5	7/8	6/8	8/11	0/2	0/2	NA	NA	NA	1/3
Characteristic per diagnostic group		Validation Cohort: ARWiBo $n = 17$ (Aβ+); $n = 767$									
		Typical		Limbic-predominant		Hippocampal-sparing		Subcortical atrophy		Outliers	
Age	CU	NA	49.7 \pm 15.6	NA	43.6 \pm 18.8	NA	48.8 \pm 14.4	NA	50.0	NA	51.1 \pm 14.6
	MCI [#]	68.8 \pm 8.2	71.7 \pm 9.5	NA	76.1 \pm 7.2	NA	68.0 \pm 2.6	NA	NA	75.0 \pm 4.2	68.2 \pm 8.4
	AD-D [#]	64.5 \pm 3.5	71.3 \pm 9.4	63.0	70.8 \pm 8.0	50.0	59.6 \pm 7.5	NA	NA	67.0	71.2 \pm 5.4
N (%)	CU	NA	71 (12.0%)	NA	25 (4.2%)	NA	13 (2.2%)	NA	1 (0.2%)	NA	483 (81.5%)
	MCI	5 (50.0%)	23 (23.2%)	0 (0.0%)	9 (9.1%)	0 (0.0%)	3 (3.0%)	0 (0.0%)	0 (0.0%)	5 (50.0%)	64 (64.6%)
	AD-D	4 (57.1%)	39 (52.0%)	1 (14.3%)	14 (18.7%)	1 (14.3%)	5 (6.7%)	0 (0.0%)	0 (0.0%)	1 (14.3%)	17 (22.7%)
Sex (n_{male}/n_{female})	CU	NA	22/49	NA	13/12	NA	7/6	NA	0/1	NA	188/295
	MCI	3/2	9/14	NA	4/5	NA	1/2	NA	NA	1/4	22/42
	AD-D	1/3	10/29	1/0	7/7	0/1	2/3	NA	NA	0/1	6/11
MMSE	CU	NA	28.6 \pm 2.2	NA	28.6 \pm 1.4	NA	28.9 \pm 1.0	NA	28.0	NA	28.7 \pm 1.6
	MCI	27.4 \pm 2.9	25.8 \pm 3.0	NA	25.2 \pm 2.7	NA	27.7 \pm 3.2	NA	NA	22.6 \pm 6.3	25.5 \pm 3.7
	AD-D	22.8 \pm 7.5	22.7 \pm 5.0	27.0	25.0 \pm 4.4	29.0	20.0 \pm 5.9	NA	NA	27.0	23.1 \pm 6.4
APOE4 carriers (n_{APOE}/n_{total})	CU	NA	9/33	NA	3/11	NA	1/7	NA	0/1	NA	42/206
	MCI	1/3	5/14	NA	2/4	NA	0/2	NA	NA	1/3	15/35
	AD-D	2/4	10/24	1/1	4/8	0/0	1/3	NA	NA	1/1	2/4
Characteristic per diagnostic group		Validation Cohort: EDSD $n = 28$ (Aβ+); $n = 347$									
		Typical		Limbic-predominant		Hippocampal-sparing		Subcortical atrophy		Outliers	
Age	CU	NA	70.3 \pm 6.9	NA	68.7 \pm 6.5	NA	66.0	NA	NA	NA	68.1 \pm 5.6
	MCI	67.2 \pm 7.2	70.0 \pm 7.9	75.2 \pm 3.6	74.6 \pm 2.6	NA	59.0	NA	73.0	72.0 \pm 6.5	71.0 \pm 7.5
	AD-D	NA	72.0 \pm 8.4	73.0	71.4 \pm 8.1	NA	71.2 \pm 7.5	NA	70.0	NA	78.2 \pm 6.0
N (%)	CU	NA	25 (18.4%)	NA	9 (6.6%)	NA	1 (0.7%)	NA	0 (0.0%)	NA	101 (74.3%)
	MCI	18 (66.7%)	43 (45.7%)	4 (14.8%)	9 (9.6%)	0 (0.0%)	1 (1.1%)	0 (0.0%)	1 (1.1%)	5 (18.5%)	40 (42.6%)
	AD-D	0 (0.0%)	66 (56.4%)	1 (100.0%)	29 (24.8%)	0 (0.0%)	5 (4.3%)	0 (0.0%)	1 (0.9%)	0 (0.0%)	16 (13.7%)

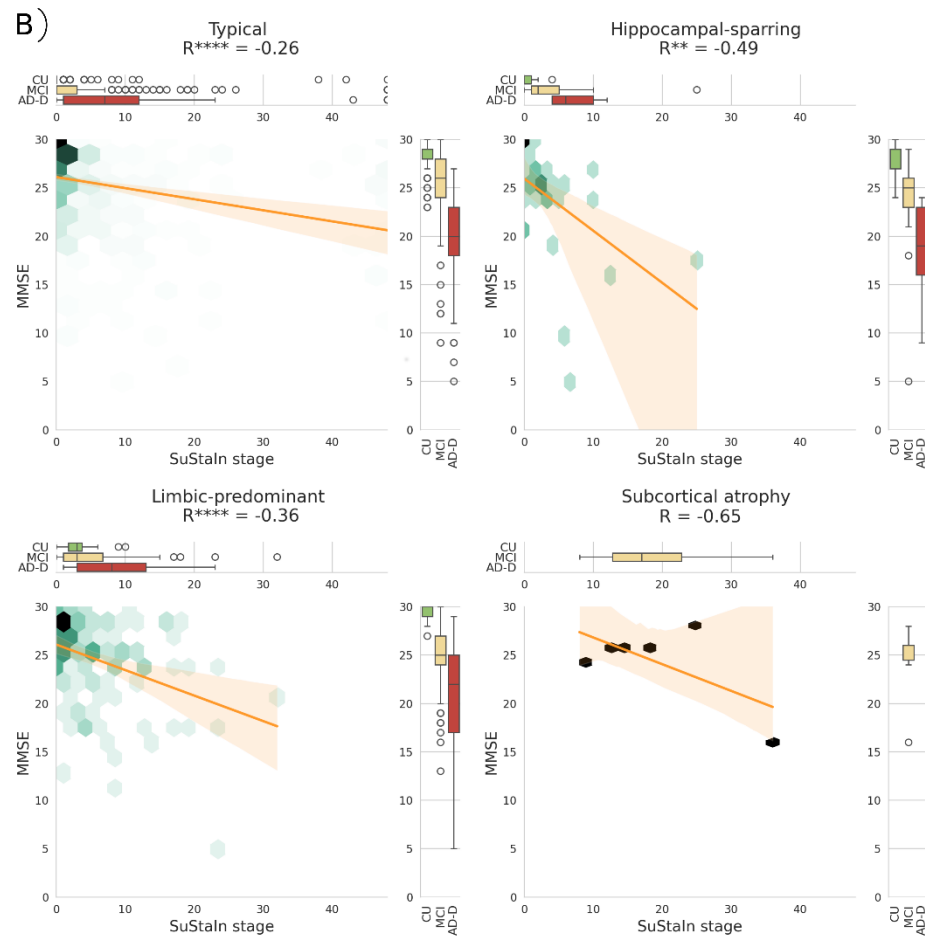
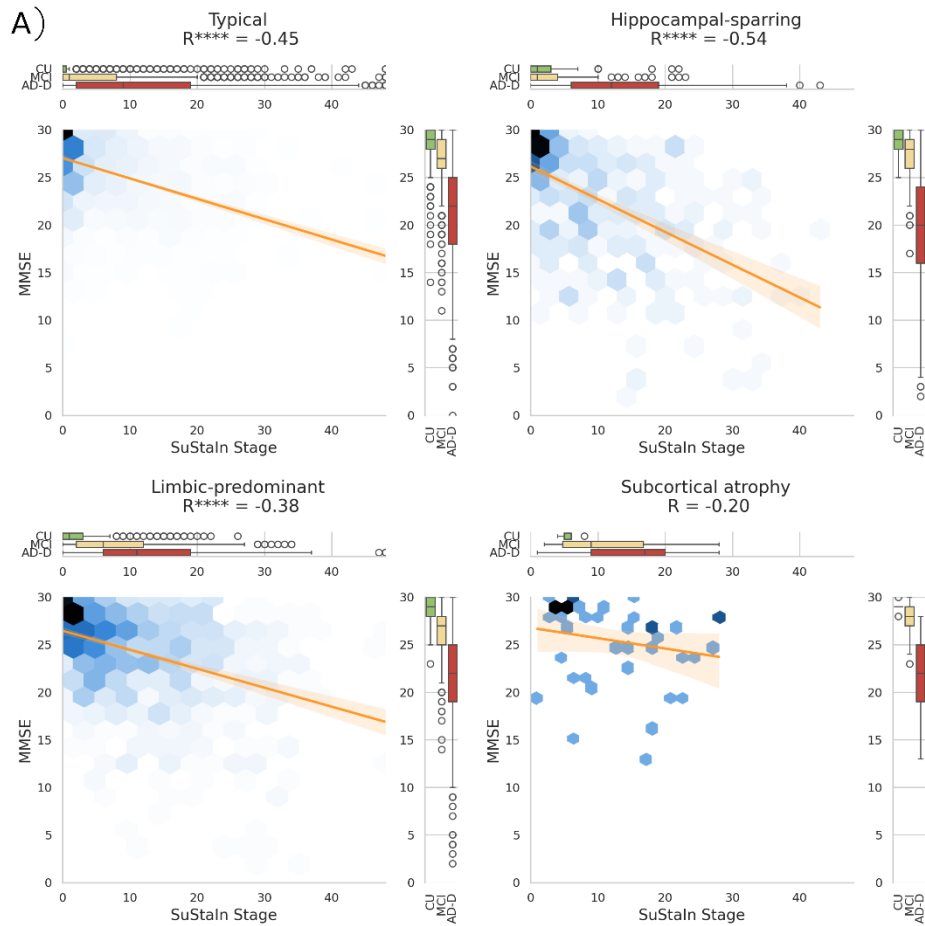
Sex (n_{male}/n_{female})	CU	NA	17/8	NA	7/2	NA	1/0	NA	NA	NA	40/61
	MCI	12/6	23/20	3/1	7/2	NA	0/1	NA	0/1	3/2	22/18
	AD-D	NA	27/39	1/0	12/17	NA	4/1	NA	1/0	NA	5/11
MMSE	CU	NA	28.6±1.3	NA	28.2±0.8	NA	30.0	NA	NA	NA	28.8±1.1
	MCI*	25.7±2.5	26.3±2.2	27.5±1.7	26.2±2.1	NA	27.0	NA	28.0	25.8±1.9	26.5±1.9
	AD-D	NA	19.5±5.5	29.0	21.5±4.2	NA	18.4±9.0	NA	20.0	NA	23.1±2.8
APOE4 carriers (n_{APOE}/n_{total})	CU	NA	2/6	NA	2/7	NA	0/0	NA	0/0	0/0	14/43
	MCI	8/14	10/22	4/4	4/6	NA	0/0	NA	0/0	4/4	12/20
	AD-D	NA	11/16	0/0	6/12	NA	3/4	NA	0/1	0/0	2/7
Characteristic per diagnostic group		Validation Cohort: I-ADNI $n = 0$ ($A\beta^+$); $n = 169$									
		Typical		Limbic-predominant		Hippocampal-sparing		Subcortical atrophy		Outliers	
Age	CU	NA	65.7±12.2	NA	70.0	NA	NA	NA	NA	NA	74.3±11.1
	MCI	NA	70.9±7.6	NA	74.0±2.9	NA	67.0±8.7	NA	NA	NA	70.4±6.7
	AD-D [#]	NA	73.1±8.0	NA	75.7±7.9	NA	62.2±7.1	NA	75.0	NA	73.7±4.2
N (%)	CU	NA	3 (42.9%)	NA	1 (14.3%)	NA	0 (0.0%)	NA	0 (0.0%)	NA	3 (42.9%)
	MCI	NA	16 (45.7%)	NA	5 (14.3%)	NA	3 (8.6%)	NA	0 (0.0%)	NA	11 (31.4%)
	AD-D	NA	77 (60.6%)	NA	18 (14.2%)	NA	12 (9.4%)	NA	1 (0.8%)	NA	19 (15.0%)
Sex (n_{male}/n_{female})	CU	NA	3/0	NA	1/0	NA	NA	NA	NA	NA	0/3
	MCI	NA	12/4	NA	2/3	NA	3/0	NA	NA	NA	1/10
	AD-D	NA	25/52	NA	9/9	NA	4/8	NA	0/1	NA	4/15
MMSE	CU	NA	29.7±0.6	NA	29.0	NA	NA	NA	NA	NA	28.0±1.7
	MCI	NA	26.5±2.4	NA	25.0±3.4	NA	28.0±0.0	NA	NA	NA	27.0±2.5
	AD-D	NA	19.6±4.3	NA	20.9±4.0	NA	19.4±3.8	NA	15.0	NA	23.0±3.1
APOE4 carriers (n_{APOE}/n_{total})	CU	NA	NA	NA	NA	NA	NA	NA	NA	NA	NA
	MCI	NA	NA	NA	NA	NA	NA	NA	NA	NA	NA
	AD-D	NA	NA	NA	NA	NA	NA	NA	NA	NA	NA
Characteristic per diagnostic group		Validation Cohort: NACC $n = 190$ ($A\beta^+$); $n = 1,085$									
		Typical		Limbic-predominant		Hippocampal-sparing		Subcortical atrophy		Outliers	
Age	CU	NA	NA	NA	NA	NA	NA	NA	NA	NA	NA
	MCI [#]	77.7±9.3	75.3±8.8	73.3±12.9	72.6±8.9	73.8±10.4	68.5±13.0	NA	82.0	70.8±9.4	71.8±10.7
	AD-D [#]	71.1±11.6	72.3±10.8	75.8±9.2	73.7±8.8	61.9±6.3	63.8±9.2	70.5±17.7	72.2±14.8	66.2±5.8	72.9±11.3
N (%)	CU	NA	NA	NA	NA	NA	NA	NA	NA	NA	NA
	MCI	34 (53.1%)	248 (43.8%)	17 (26.6%)	101 (17.8%)	4 (6.2%)	19 (3.4%)	0 (0.0%)	1 (0.2%)	9 (14.1%)	197 (34.8%)
	AD-D	72 (57.1%)	273 (52.6%)	33 (26.2%)	111 (21.4%)	14 (11.1%)	46 (8.9%)	2 (1.6%)	8 (1.5%)	5 (4.0%)	81 (15.6%)
Sex (n_{male}/n_{female})	CU	NA	NA	NA	NA	NA	NA	NA	NA	NA	NA
	MCI	17/17	123/125	10/7	53/48	1/3	9/10	0/0	0/1	4/5	59/138
	AD-D	39/33	128/145	21/12	58/53	8/6	20/26	2/0	6/2	2/3	28/53
MMSE	CU	NA	NA	NA	NA	NA	NA	NA	NA	NA	NA
	MCI	25.7±2.6	26.3±3.2	25.7±1.6	25.9±3.3	24.0	26.2±3.1	NA	27.0	28.8±1.5	27.2±2.6
	AD-D	20.6±6.5	20.8±5.8	20.9±4.5	21.4±5.3	20.9±6.1	20.2±6.0	28.0	21.4±4.9	25.2±2.5	22.0±5.6
APOE4 carriers (n_{APOE}/n_{total})	CU	NA	NA	NA	NA	NA	NA	NA	NA	NA	NA
	MCI	22/33	97/223	11/17	47/91	2/4	7/18	0/0	1/1	5/9	59/154
	AD-D	41/68	123/232	18/31	52/96	10/13	27/40	0/2	2/5	4/5	29/60
		Validation Cohort: OASIS $n = 0$ ($A\beta^+$); $n = 302$									

Characteristic per diagnostic group		Typical		Limbic-predominant		Hippocampal-sparing		Subcortical atrophy		Outliers	
Age	CU	NA	73.7±12.5	NA	67.9±20.2	NA	70.2±14.4	NA	NA	NA	68.8±11.2
	MCI	NA	76.0±7.9	NA	76.5±6.8	NA	76.0±7.1	NA	NA	NA	75.5±7.3
	AD-D	NA	74.5±7.6	NA	74.2±2.8	NA	79.0±9.9	NA	NA	NA	80.0±7.1
N (%)	CU	NA	20 (10.8%)	NA	7 (3.8%)	NA	5 (2.7%)	NA	0 (0.0%)	NA	153 (82.7%)
	MCI	NA	30 (33.3%)	NA	14 (15.6%)	NA	2 (2.2%)	NA	0 (0.0%)	NA	44 (48.9%)
	AD-D	NA	13 (48.1%)	NA	5 (18.5%)	NA	2 (7.4%)	NA	0 (0.0%)	NA	7 (25.9%)
Sex (n_{male}/n_{female})	CU	NA	9/11	NA	5/2	NA	2/3	NA	NA	NA	37/116
	MCI	NA	12/18	NA	10/4	NA	2/0	NA	NA	NA	21/23
	AD-D	NA	3/10	NA	1/4	NA	0/2	NA	NA	NA	3/4
MMSE	CU	NA	29.4±0.8	NA	29.0±1.5	NA	28.8±1.8	NA	NA	NA	29.2±1.0
	MCI	NA	25.9±3.0	NA	25.1±3.7	NA	24.5±6.4	NA	NA	NA	26.8±2.7
	AD-D	NA	22.8±4.0	NA	19.0±3.7	NA	21.0±8.5	NA	NA	NA	23.1±1.3
APOE4 carriers (n_{APOE}/n_{total})	CU	NA	NA	NA	NA	NA	NA	NA	NA	NA	NA
	MCI	NA	NA	NA	NA	NA	NA	NA	NA	NA	NA
	AD-D	NA	NA	NA	NA	NA	NA	NA	NA	NA	NA
Characteristic per diagnostic group		Validation Cohort: PharmaCog $n = 48$ (Aβ+); $n = 100$									
		Typical		Limbic-predominant		Hippocampal-sparing		Subcortical atrophy		Outliers	
Age	CU	NA	NA	NA	NA	NA	NA	NA	NA	NA	NA
	MCI	71.3±7.1	71.3±7.7	66.3±7.2	67.1±7.8	67.0	72.0±4.4	NA	NA	70.1±5.2	67.5±7.0
	AD-D	NA	NA	NA	NA	NA	NA	NA	NA	NA	NA
N (%)	CU	NA	NA	NA	NA	NA	NA	NA	NA	NA	NA
	MCI	20 (41.7%)	28 (28.0%)	6 (12.5%)	14 (14.0%)	1 (2.1%)	3 (3.0%)	0 (0.0%)	0 (0.0%)	21 (43.8%)	55 (55.0%)
	AD-D	NA	NA	NA	NA	NA	NA	NA	NA	NA	NA
Sex (n_{male}/n_{female})	CU	NA	NA	NA	NA	NA	NA	NA	NA	NA	NA
	MCI	8/12	14/14	4/2	8/6	1/0	1/2	NA	NA	8/13	17/38
	AD-D	NA	NA	NA	NA	NA	NA	NA	NA	NA	NA
MMSE	CU	NA	NA	NA	NA	NA	NA	NA	NA	NA	NA
	MCI	25.9±1.7	26.5±1.8	26.3±1.8	26.1±1.7	26.0	27.7±2.1	NA	NA	26.2±1.9	26.8±1.9
	AD-D	NA	NA	NA	NA	NA	NA	NA	NA	NA	NA
APOE4 carriers (n_{APOE}/n_{total})	CU	NA	NA	NA	NA	NA	NA	NA	NA	NA	NA
	MCI	15/20	15/28	5/6	7/14	0/1	0/3	NA	NA	14/19	19/53
	AD-D	NA	NA	NA	NA	NA	NA	NA	NA	NA	NA
Characteristic per diagnostic group		Validation Cohort: GMC (external)									
		Typical		Limbic-predominant		Hippocampal-sparing		Subcortical atrophy		Outliers	
Age	CU	71.1± 4.8	65.9±10.6	70.0	57.9±10.7	NA	65.5±7.5	NA	NA	70.0	67.8±11.1
	MCI	73.9±5.8	71.8±10.3	74.0±5.9	74.4±9.3	68.8± 7.1	70.4±9.5	NA	76.5±14.4	68.9±6.6	70.5±10.4
	AD-D [#]	68.4±10.9	75.9±9.0	74.7±2.3	79.9±5.3	67.0±9.9	75.2±11.5	NA	NA	72.0±5.0	80.0±6.4
N (%)	CU	14 (87.5%)	121 (72.5%)	1 (6.3%)	7 (4.2%)	NA	10 (6.0%)	NA	NA	1 (6.3%)	29 (17.4%)
	MCI	56 (51.9%)	257 (61.3%)	38 (35.2%)	89 (21.2%)	4 (3.7%)	17 (4.1%)	NA	6 (1.4%)	10 (9.3%)	50 (11.9%)
	AD-D	24 (68.5%)	91 (66.4%)	6 (17.1%)	33 (24.1%)	3 (8.6%)	6 (4.4%)	NA	NA	2 (5.7%)	7 (5.1%)
Sex (n_{male}/n_{female})	CU	5/9	40/81	0/1	2/5	NA	3/7	NA	NA	1/0	12/27
	MCI [#]	30/26	110/147	11/27	34/55	2/2	11/6	NA	5/1	3/7	23/27

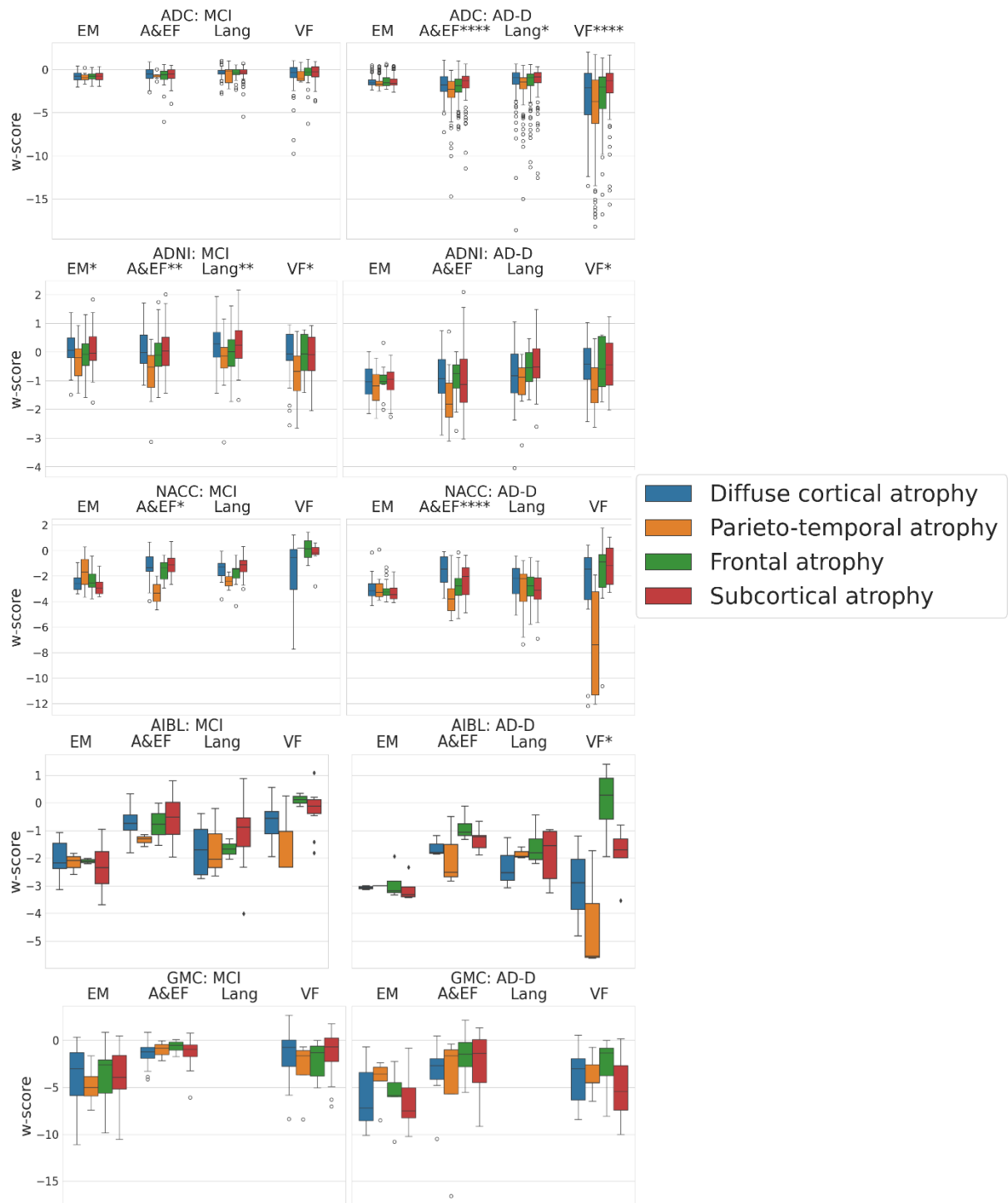
<i>n_{female}</i>)	AD-D	12/12	31/60	5/1	18/15	2/1	4/2	NA	NA	2/0	4/3
MMSE	CU	28.4±1.0	28.4±1.4	28	28.9±1.0	NA	28.0±1.8	NA	NA	28	28.3±1.8
	MCI*#	25.9± 2.6	25.8±3.1	24.9±3.0	25.1±3.3	19.5±8.4	23.1±5.2	NA	24.3±3.9	25.5±3.4	26.2±3.1
	AD-D	19.5±4.6	19.5±4.6	21.8±2.9	21.0±5.5	14.7±4.2	18.2±5.4	NA	NA	23.5±2.5	22.7±3.4
APOE4 carriers (<i>n_{APOE}</i> / <i>n_{total}</i>)	CU	4/10	12/28	1/1	1/2	NA	0/4	NA	NA	1/1	4/4
	MCI	15/24	26/49	7/13	8/16	1/2	1/2	NA	NA	2/4	5/12
	AD-D	1/3	5/7	NA	0/1	NA	NA	NA	NA	NA	NA



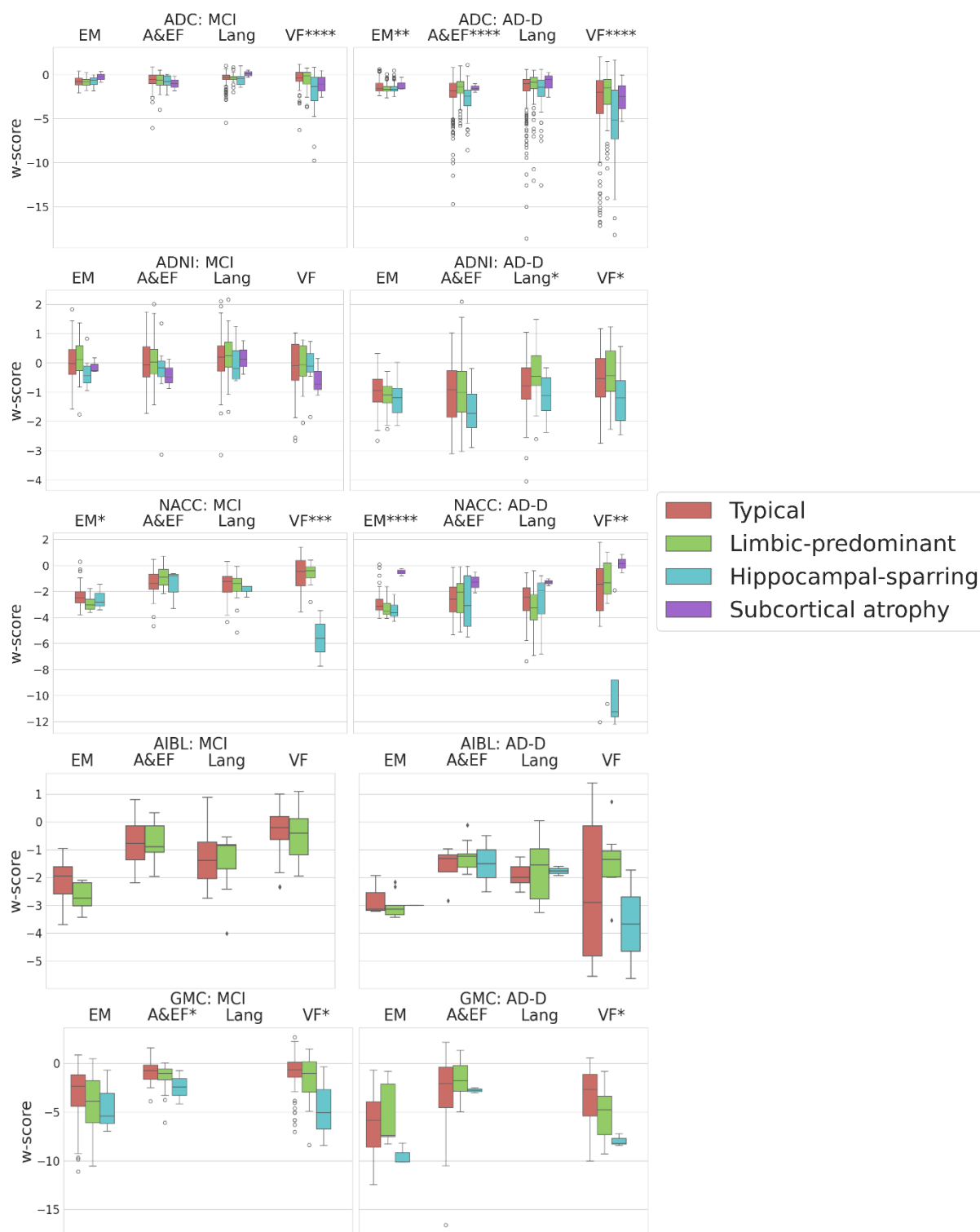
Supplementary Figure 6: Experiment 1: Correlation of the estimated stage (measuring atrophy severity) using Snowflake with MMSE in A) A β + validation-dataset B) A β + subset of the external-validation cohort. Figures A) and B) both consists of 4 hex-plots, one for each subtype assigned using the trained Snowflake model. The colour of a bin in the hex-plot denotes the relative proportion of the participants. The boxplot on top of each hex-plot shows the distribution of estimated Snowflake stage for the participants in the different clinical groups. The boxplot at the right of each hex-plot shows the distribution of MMSE in the different clinical groups. The line overlaying on each hex-plot shows the regression line between MMSE and Snowflake's stage. The text on top of each hex-plot shows the correlation coefficient (R) between estimated stage and MMSE. The asterisk (*) next to R denotes the significance level. * corresponds to $p < 0.05$; ** corresponds to $p < 0.01$; *** corresponds to $p < 0.001$; **** corresponds to $p < 0.0001$. Abbreviations: CU: Cognitively unimpaired (Cognitively normal or subjective cognitive decline); MCI: Mild cognitive impairment; AD-D: Alzheimer's disease dementia;



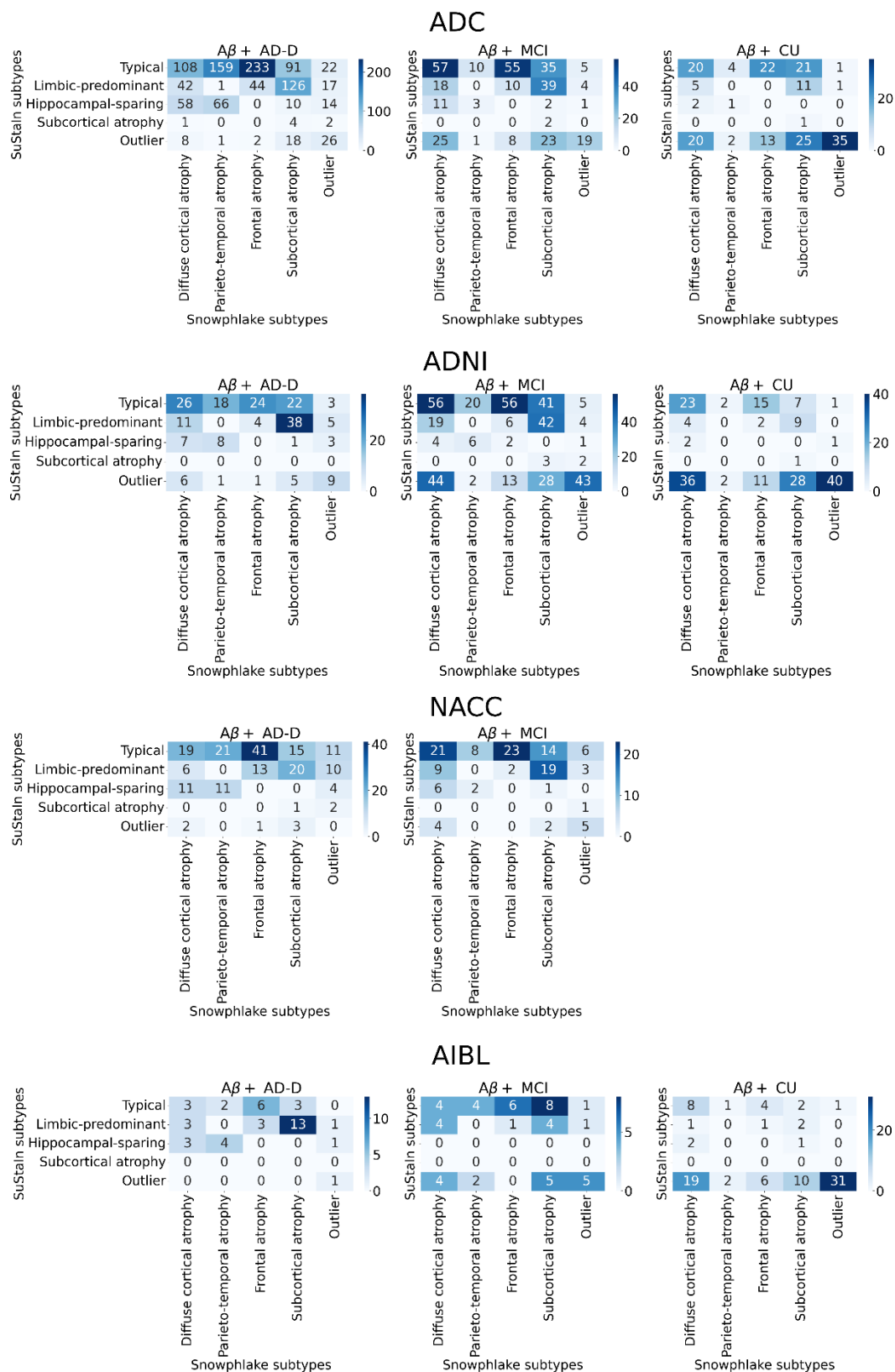
Supplementary Figure 7: Experiment 1: Correlation of the estimated stage (measuring atrophy severity) using SuStaIn with MMSE in A) clinical-validation dataset B) external-validation cohort. Figures A) and B) both consists of 4 hex-plots, one for each subtype assigned using the trained SuStaIn model. The colour of a bin in the hex-plot denotes the relative proportion of the participants. The boxplot on top of each hex-plot shows the distribution of estimated SuStaIn stage for the participants in the different clinical groups. The boxplot at the right of each hex-plot shows the distribution of MMSE in the different clinical groups. The line overlaying on each hex-plot shows the regression line between MMSE and SuStaIn's stage. The text on top of each hex-plot shows the correlation coefficient (R) between estimated stage and MMSE. The asterisk (*) next to R denotes the significance level. * corresponds to $p < 0.05$; ** corresponds to $p < 0.01$; *** corresponds to $p < 0.001$; **** corresponds to $p < 0.0001$. Abbreviations: CU: Cognitively unimpaired (Cognitively normal or subjective cognitive decline); MCI: Mild cognitive impairment; AD-D: Alzheimer's disease dementia.



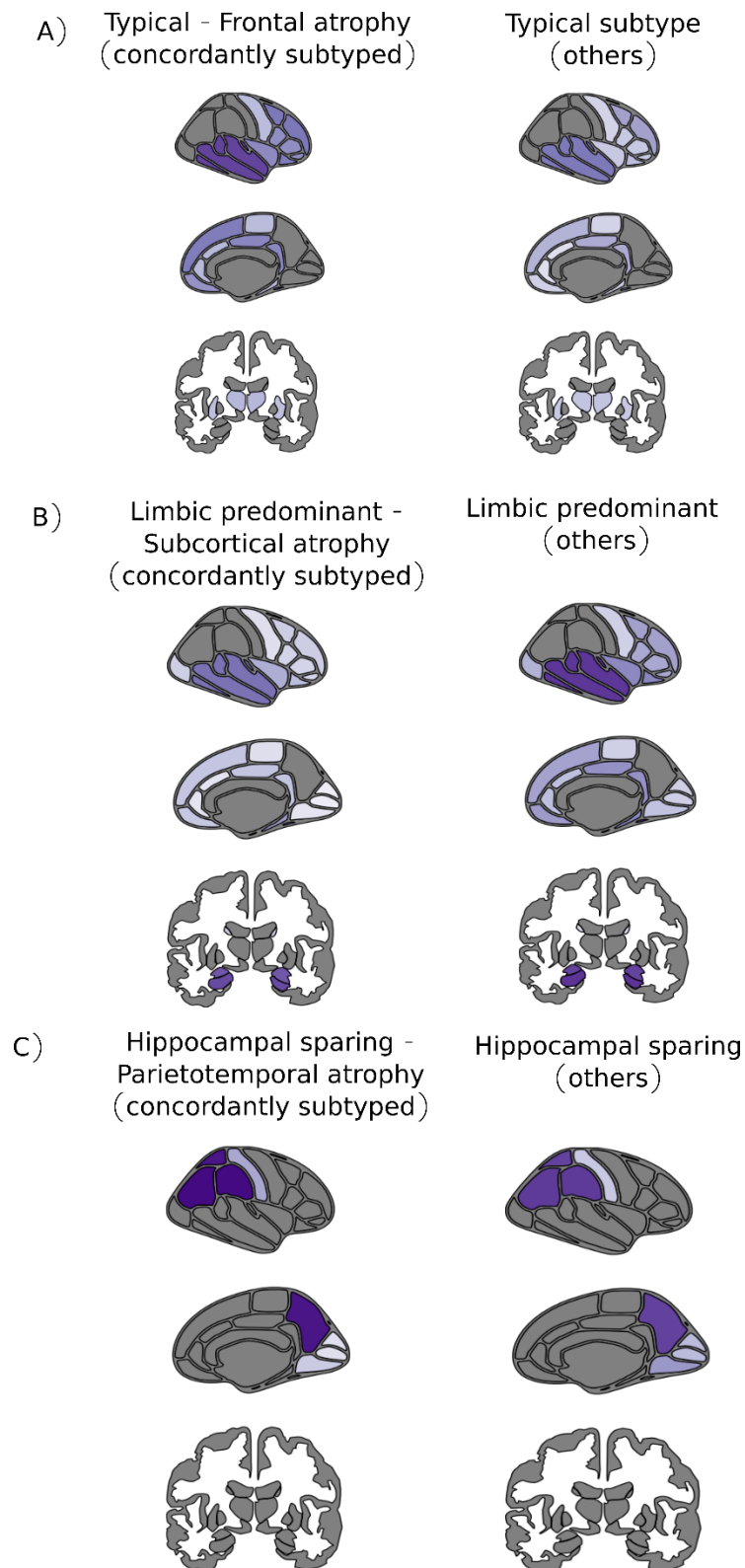
Supplementary Figure 8: Experiment 2: Cognitive domain scores of $A\beta^+$ participants with MCI (left) or AD-D (right) in the validation cohorts, for the different subtypes assigned using the trained Snowflake model. The plotted w-scores depict the raw cognitive domain scores, corrected for participant's age, sex, and education level. The asterisk (*) next to domain name denotes the significance level of the differences between the 4 subtypes, after correcting for the aforementioned confounders, in the corresponding cohort. * corresponds to $p < 0.05$; ** corresponds to $p < 0.01$; *** corresponds to $p < 0.001$; **** corresponds to $p < 0.0001$. Abberivations: EM: Episodic memory; A&EF: Attention and executive function; Lang: Language; VF: Visuospatial function.



Supplementary Figure 9: Experiment 2: Cognitive domain scores of Aβ+ participants with MCI (left) or AD-D (right) in the validation cohorts, for the different subtypes assigned using the trained SuStIn model. The plotted w-scores depict the raw cognitive domain scores corrected for participant's age, sex, and education level. The asterisk (*) next to domain name denotes the significance level of the differences between the 4 subtypes, after correcting for the aforementioned confounders, in the corresponding cohort. * corresponds to $p < 0.05$; ** corresponds to $p < 0.01$; *** corresponds to $p < 0.001$; **** corresponds to $p < 0.0001$. Abbreviations: EM: Episodic memory; A&EF: Attention and executive function; Lang: Language; VF: Visuospatial function.



Supplementary Figure 10: Experiment 3: Cohort-wise concordance of Snowflake and SuStAln subtypes. The Figure shows the contingency matrix of estimated atrophy-based subtypes using Snowflake and SuStAln among Aβ+ participants in ADC, ADNI, NACC, and AIBL cohorts, in different clinical stages of the disease. Abbreviations: CU: Cognitively unimpaired (Cognitively normal or subjective cognitive decline); MCI: Mild cognitive impairment; AD-D: Alzheimer’s disease dementia;



Supplementary Figure 11: Experiment 3: Regional differences (average w-score maps) between concordantly subtyped $A\beta^+$ AD-D individuals and others assigned the same SuStAln subtype. Only the regions with significant differences (FDR corrected $p < 0.05$) in average w-score values between the two groups are shown here. The average w-score were created using all the $A\beta^+$ AD-D participants in the group and is thus not dependent on the disease severity. The colormap used shows the average w-score in that region, with light shades of violet indicating values closer to 0. Darker shades of violet indicates a more negative w-score value indicating more atrophy.

Supplementary References

1. Tijms BM, Willemse EAJ, Zwan MD, et al. Unbiased Approach to Counteract Upward Drift in Cerebrospinal Fluid Amyloid-beta 1-42 Analysis Results. *Clin Chem*. Mar 2018;64(3):576-585. doi:10.1373/clinchem.2017.281055
2. Willemse EAJ, Tijms BM, van Berckel BNM, Le Bastard N, van der Flier WM, Scheltens P, Teunissen CE. Comparing CSF amyloid-beta biomarker ratios for two automated immunoassays, Elecsys and Lumipulse, with amyloid PET status. *Alzheimers Dement (Amst)*. 2021;13(1):e12182. doi:10.1002/dad2.12182
3. Kang JH, Vanderstichele H, Trojanowski JQ, Shaw LM. Simultaneous analysis of cerebrospinal fluid biomarkers using microsphere-based xMAP multiplex technology for early detection of Alzheimer's disease. *Methods*. Apr 2012;56(4):484-93. doi:10.1016/j.ymeth.2012.03.023
4. Archetti D, Ingala S, Venkatraghavan V, et al. Multi-study validation of data-driven disease progression models to characterize evolution of biomarkers in Alzheimer's disease. *Neuroimage Clin*. 2019;24:101954. doi:10.1016/j.nicl.2019.101954
5. de Wilde A, van Maurik IS, Kunneman M, et al. Alzheimer's biomarkers in daily practice (ABIDE) project: Rationale and design. *Alzheimers Dement (Amst)*. 2017;6:143-151. doi:10.1016/j.dadm.2017.01.003
6. Boccalini C, Ribaldi F, Hristovska I, et al. The impact of tau deposition and hypometabolism on cognitive impairment and longitudinal cognitive decline. *Alzheimers Dement*. Aug 9 2023;doi:10.1002/alz.13355
7. Bourgeat P, Dore V, Frupp J, et al. Implementing the centiloid transformation for (11)C-PiB and beta-amyloid (18)F-PET tracers using CapAIBL. *Neuroimage*. Dec 2018;183:387-393. doi:10.1016/j.neuroimage.2018.08.044
8. Salvado G, Molinuevo JL, Brugulat-Serrat A, et al. Centiloid cut-off values for optimal agreement between PET and CSF core AD biomarkers. *Alzheimers Res Ther*. Mar 21 2019;11(1):27. doi:10.1186/s13195-019-0478-z
9. Saan R, Deelman B. De 15-woordentest A en B (een voorlopige handleiding). *Groningen: Afdeling Neuropsychologie, AZG*. 1986;
10. Lindeboom J, Schmand B, Tulner L, Walstra G, Jonker C. Visual association test to detect early dementia of the Alzheimer type. *J Neurol Neurosurg Psychiatry*. Aug 2002;73(2):126-33. doi:10.1136/jnnp.73.2.126
11. Meyers JE, Meyers KR. Rey Complex Figure Test under four different administration procedures. *Clinical Neuropsychologist*. 1995;9(1):63-67. doi:10.1080/13854049508402059
12. Fowler C, Rainey-Smith SR, Bird S, et al. Fifteen Years of the Australian Imaging, Biomarkers and Lifestyle (AIBL) Study: Progress and Observations from 2,359 Older Adults Spanning the Spectrum from Cognitive Normality to Alzheimer's Disease. *J Alzheimers Dis Rep*. 2021;5(1):443-468. doi:10.3233/ADR-210005
13. Crane PK, Carle A, Gibbons LE, et al. Development and assessment of a composite score for memory in the Alzheimer's Disease Neuroimaging Initiative (ADNI). *Brain Imaging Behav*. Dec 2012;6(4):502-16. doi:10.1007/s11682-012-9186-z
14. Dodge HH, Goldstein FC, Wakim NI, et al. Differentiating among stages of cognitive impairment in aging: Version 3 of the Uniform Data Set (UDS) neuropsychological test battery and MoCA index scores. *Alzh Dement-Trci*. 2020;6(1)doi:ARTN e12103 10.1002/trc2.12103
15. Loizos M, Zhu CW, Akrivos J, et al. Evaluating memory testing to distinguish dementia severity among White, Black, and Spanish-speaking individuals in the Uniform Data Set (UDS). *Alzheimers Dement*. Aug 2023;19(8):3625-3634. doi:10.1002/alz.13002

16. Prestia A, Rossi R, Geroldi C, Galluzzi S, Etori M, Alaimo G, Frisoni GB. Validation study of the three-objects-three-places test: a screening test for Alzheimer's disease. *Exp Aging Res.* Oct-Dec 2006;32(4):395-410. doi:10.1080/03610730600875767
17. Baddeley AD, Emslie H, Nimmo-Smith I. *Doors and people: A test of visual and verbal recall and recognition.* Harcourt Assessment; 2006.
18. Reitan RM. The relation of the trail making test to organic brain damage. *J Consult Psychol.* Oct 1955;19(5):393-4. doi:10.1037/h0044509
19. Wechsler D. Wechsler adult intelligence scale. *Frontiers in Psychology.* 1981;
20. Stroop JR. Studies of interference in serial verbal reactions. *Journal of Experimental Psychology.* 1935;18(6):643-662. doi:10.1037/h0054651
21. Newcombe F. *Missile wounds of the brain: A study of psychological deficits.* Missile wounds of the brain: A study of psychological deficits. Oxford U. Press; 1969:vi, 145-vi, 145.
22. van der Elst W, van Boxtel MP, van Breukelen GJ, Jolles J. The Letter Digit Substitution Test: normative data for 1,858 healthy participants aged 24-81 from the Maastricht Aging Study (MAAS): influence of age, education, and sex. *J Clin Exp Neuropsychol.* Aug 2006;28(6):998-1009. doi:10.1080/13803390591004428
23. Gibbons LE, Carle AC, Mackin RS, et al. A composite score for executive functioning, validated in Alzheimer's Disease Neuroimaging Initiative (ADNI) participants with baseline mild cognitive impairment. *Brain Imaging Behav.* Dec 2012;6(4):517-27. doi:10.1007/s11682-012-9176-1
24. Ruff RM, Light RH, Parker SB, Levin HS. Benton Controlled Oral Word Association Test: reliability and updated norms. *Arch Clin Neuropsychol.* 1996;11(4):329-38.
25. Delis DC, Kramer JH, Kaplan E, Holdnack J. Reliability and validity of the Delis-Kaplan Executive Function System: an update. *J Int Neuropsychol Soc.* Mar 2004;10(2):301-3. doi:10.1017/S1355617704102191
26. Regard M. COGNITIVE RIGIDITY AND FLEXIBILITY: A NEUROPSYCHOLOGICAL STUDY. 1983;
27. Osterrieth PA. Le test de copie d'une figure complexe; contribution à l'étude de la perception et de la mémoire. [Test of copying a complex figure; contribution to the study of perception and memory.]. *Archives de Psychologie.* 1944;30:206-356.
28. Warrington E, James M. The Visual Object and Space Perception Battery, Thames Valley Test Company, Bury St. *Edmunds, UK.* 1991;
29. Choi SE, Mukherjee S, Gibbons LE, et al. Development and validation of language and visuospatial composite scores in ADNI. *Alzheimers Dement (N Y).* 2020;6(1):e12072. doi:10.1002/trc2.12072
30. Harrington KD, Lim YY, Ellis KA, et al. The association of Abeta amyloid and composite cognitive measures in healthy older adults and MCI. *Int Psychogeriatr.* Oct 2013;25(10):1667-77. doi:10.1017/S1041610213001087
31. Possin KL, Laluz VR, Alcantar OZ, Miller BL, Kramer JH. Distinct neuroanatomical substrates and cognitive mechanisms of figure copy performance in Alzheimer's disease and behavioral variant frontotemporal dementia. *Neuropsychologia.* Jan 2011;49(1):43-8. doi:10.1016/j.neuropsychologia.2010.10.026
32. Aprahamian I, Martinelli JE, Neri AL, Yassuda MS. The Clock Drawing Test: A review of its accuracy in screening for dementia. *Dement Neuropsychol.* Apr-Jun 2009;3(2):74-81. doi:10.1590/S1980-57642009DN30200002
33. Monsch AU, Bondi MW, Butters N, Salmon DP, Katzman R, Thal LJ. Comparisons of verbal fluency tasks in the detection of dementia of the Alzheimer type. *Arch Neurol.* Dec 1992;49(12):1253-8. doi:10.1001/archneur.1992.00530360051017
34. Kaplan E, Goodglass H, Weintraub S. Boston naming test. 1976;

35. Gollan TH, Weissberger GH, Runnqvist E, Montoya RI, Cera CM. Self-ratings of Spoken Language Dominance: A Multi-Lingual Naming Test (MINT) and Preliminary Norms for Young and Aging Spanish-English Bilinguals. *Biling (Camb Engl)*. Jul 2012;15(3):594-615. doi:10.1017/S1366728911000332
36. Venkatraghavan V, Klein S, Fani L, et al. Analyzing the effect of APOE on Alzheimer's disease progression using an event-based model for stratified populations. *Neuroimage*. Feb 15 2021;227:117646. doi:10.1016/j.neuroimage.2020.117646
37. Young AL, Marinescu RV, Oxtoby NP, et al. Uncovering the heterogeneity and temporal complexity of neurodegenerative diseases with Subtype and Stage Inference. *Nat Commun*. Oct 15 2018;9(1):4273. doi:10.1038/s41467-018-05892-0
38. Petersen RC, Aisen PS, Beckett LA, et al. Alzheimer's Disease Neuroimaging Initiative (ADNI): clinical characterization. *Neurology*. Jan 19 2010;74(3):201-9. doi:10.1212/WNL.0b013e3181cb3e25
39. Weiner MW, Veitch DP, Aisen PS, et al. Impact of the Alzheimer's Disease Neuroimaging Initiative, 2004 to 2014. *Alzheimers Dement*. Jul 2015;11(7):865-84. doi:10.1016/j.jalz.2015.04.005
40. Weiner MW, Veitch DP, Aisen PS, et al. The Alzheimer's Disease Neuroimaging Initiative 3: Continued innovation for clinical trial improvement. *Alzheimers Dement*. May 2017;13(5):561-571. doi:10.1016/j.jalz.2016.10.006
41. Brueggen K, Grothe MJ, Dyrba M, et al. The European DTI Study on Dementia - A multicenter DTI and MRI study on Alzheimer's disease and Mild Cognitive Impairment. *Neuroimage*. Jan 2017;144(Pt B):305-308. doi:10.1016/j.neuroimage.2016.03.067
42. Cavado E, Redolfi A, Angeloni F, et al. The Italian Alzheimer's Disease Neuroimaging Initiative (I-ADNI): validation of structural MR imaging. *J Alzheimers Dis*. 2014;40(4):941-52. doi:10.3233/JAD-132666
43. Marcus DS, Wang TH, Parker J, Csernansky JG, Morris JC, Buckner RL. Open Access Series of Imaging Studies (OASIS): cross-sectional MRI data in young, middle aged, nondemented, and demented older adults. *J Cogn Neurosci*. Sep 2007;19(9):1498-507. doi:10.1162/jocn.2007.19.9.1498