

1 **Shifts in Indonesia's malaria landscape: an** 2 **analysis of 2010-2019 routine surveillance data**

3 Bimandra A Djaafara^{1,2}, Ellie Sherrard-Smith¹, Thomas S Churcher¹, Sri Budi Fajariyani³,
4 Helen Dewi Prameswari³, Herdiana Herdiana⁴, Riskha Tiara Puspadewi³, Karina D Lestari²,
5 Iqbal RF Elyazar², Patrick GT Walker¹

6 ¹MRC Centre for Global Infectious Disease Analysis, Imperial College London, United
7 Kingdom

8 ²Oxford University Clinical Research Unit, Faculty of Medicine, Universitas Indonesia,
9 Jakarta, Indonesia

10 ³Sub-directorate for Malaria Control, Ministry of Health, Jakarta, Indonesia

11 ⁴Paritrana Asia Foundation, Jakarta, Indonesia

12 **Abstract (250 words)**

13 **Background:**

14 Indonesia faces challenges in achieving its goal of eliminating malaria by 2030, with cases
15 stagnating between 2015 and 2019 despite a decline in 2013. This study aims to analyse
16 epidemiological trends and demographic changes in malaria cases regionally from 2010 to
17 2019, considering differences in surveillance across the country.

18

19 **Methods:**

20 We used national and sub-national malaria routine surveillance data, applying statistical
21 models to derive insights for future interventions. The analysis focused on metrics such as
22 malaria incidence, test positivity, case demographics, and parasite species.

23

24 **Findings:**

25 We estimate a progressive decline in malaria incidence in six of seven Indonesian regions
26 over the study period, adjusting for increased testing from 2015 onwards. In these regions,
27 cases have shifted to older, predominantly male demographics, suggesting a move from
28 household-based to occupational transmission. However, in Papua, cases remain high and
29 concentrated in children. Although Papua comprises just 2% of Indonesia's population, its
30 share of national malaria cases increased significantly from 40% to 90% between 2010 to
31 2019.

32

33 **Interpretation:**

34 Since 2010, malaria trajectories in Indonesia have diverged, influencing sub-national control
35 priorities. In most regions, progress towards elimination requires targeted interventions for
36 high-risk populations and inter-district cooperation. In contrast, Papua struggles with high
37 transmission rates despite mass insecticide-treated net campaigns. Achieving similar
38 progress in Papua as in other regions is challenging yet crucial. Therefore, Papua could be a

39 prime candidate for enhanced malaria management, maximising efforts towards larval
40 source reduction, education, chemopreventive intervention, and vaccine.

41

42 **Funding:**

43 Medical Research Council and Wellcome Africa Asia Programme Vietnam.

44 **Research in context**

45 **Evidence before this study**

46 As the country with the fourth biggest malaria burden outside of Africa, malaria control and
47 elimination have been significant public health priorities in Indonesia, especially since the
48 National Ministerial Decree on Malaria Elimination was passed in 2009. To understand the
49 existing literature on malaria in Indonesia, we conducted a literature search on PubMed
50 using the keywords 'MALARIA' and 'INDONESIA' for titles and abstracts from 1 January
51 2008 to 3 January 2024, yielding 386 results. Among these, only a few studies extensively
52 discussed the broad landscape of malaria in Indonesia. Notably, Elyazar et al., in their series
53 of studies published in the early 2010s, provided an in-depth look at the epidemiology of
54 malaria in Indonesia, the history of malaria control efforts leading up to the 2009 decree,
55 potential challenges in malaria control, and estimates of malaria prevalence across the
56 country at the beginning of the 2010 decade. These studies laid a foundational
57 understanding of the malaria situation in Indonesia at the start of the decade, capturing the
58 diverse and complex nature of the elimination challenge. Sitohang et al. wrote a commentary
59 article on the accelerated progress towards malaria elimination in Indonesia from 2007 to
60 2017. However, they also highlighted the persisting challenges that Indonesia faces in
61 meeting the 2030 elimination target. Therefore, there remains a need to quantitatively
62 assess the impact of acceleration strategies ten years after the 2009 ministerial decree and
63 understand the shifting epidemiological patterns of malaria, especially in the context of
64 Indonesia's diverse and changing demographic and environmental landscapes.

65

66 **Added value of this study**

67 Our study offers a significant contribution to understanding contemporary malaria
68 epidemiology in Indonesia, especially after a period of acceleration in malaria elimination
69 efforts. We did a comprehensive analysis of a decade's worth of malaria surveillance data in
70 Indonesia, revealing diverging trends in malaria incidence between regions and the changing

71 profiles of malaria cases. We highlight the significant decline in malaria cases since 2010 in
72 six out of seven regions in Indonesia, with cases shifted to older and predominantly male
73 demographics, indicative of a move from household-based to occupational transmission.
74 However, in Papua, cases remain high and concentrated in children despite efforts such as
75 mass insecticide-treated nets distribution campaigns. In 2019, Papua contributed to 90% of
76 malaria cases across the country, an increase from around 40% in the early 2010s despite
77 comprising only 2% of Indonesia's population.

78

79 **Implications of all the available evidence**

80 This study identifies challenges and discusses the way forward for Indonesia's fight against
81 malaria. Although there has been great progress, the findings suggest that regionally tailored
82 strategies are needed for effective elimination efforts going forward. In areas where malaria
83 incidence has declined and the demographics of typical malaria cases have shifted, malaria
84 interventions should be focused on the high-risk population in respective regions, which
85 includes mobile and migrant populations such as forest workers and indigenous people,
86 amongst others. Furthermore, inter-district cooperation is needed to prevent malaria
87 importations and reintroductions to districts already eliminating or achieving progress
88 towards malaria elimination. In Papua, where malaria transmission remains high, novel and
89 innovative interventions may be required to accelerate progress towards malaria elimination.
90 While some malaria vaccines have proven effective in high-burden countries within Africa,
91 severe disease numbers are lower in Papua, and sustained coverage levels with routine
92 immunisations have been a challenge to maintain. Hence, Indonesia is hesitant to adopt
93 such a strategy. Additionally, Indonesia also has challenges in controlling *P. vivax*, which
94 presents a significant burden on the population and is a problem not seen in African
95 countries. Therefore, in Indonesia, chemopreventive interventions (such as intermittent
96 preventive treatment of malaria during pregnancy or IPTp), and additional vector control
97 interventions (such as larval source reductions) may be potential tools to deliver progress for
98 Papua and other remaining high-burden locales. Furthermore, vaccine development efforts

99 to target adults and *P. vivax* may also be useful additions for controlling malaria in Indonesia
100 in the future.

101 **Introductions (500 words)**

102 Designing optimal malaria control strategies in Indonesia is a substantial challenge due to a
103 multitude of complex epidemiological factors.¹ The country's diverse landscape of
104 endemicity, population densities that range from dense urban areas to sparsely populated
105 rural regions, a variety of malaria vectors with differing behaviours and bionomics, and the
106 co-endemic presence of two dominant malaria species, *Plasmodium falciparum* and
107 *Plasmodium vivax*, all contribute to this complexity.^{1,2} Additionally, concerns around zoonotic
108 malaria parasite (*Plasmodium knowlesi*) infections³ and the challenges of controlling malaria
109 in mobile and migrant populations, particularly in areas nearing elimination,⁴ further
110 complicate the situation.

111

112 Despite these challenges, from 2010-2019, Indonesia's malaria elimination efforts made
113 substantial progress. In 2017, more than half of the country's districts—accounting for
114 roughly 72% of the population—reported no local malaria transmission for three consecutive
115 years, marking them malaria-free.⁵ This achievement is largely attributed to the
116 intensification of control efforts from the early 2000s and a National Ministerial Decree on
117 Malaria Elimination in 2009,⁶ which granted local authorities the autonomy and political
118 backing to implement effective, locally tailored malaria control. The decree also precipitated
119 improvements in aspects such as financing, the scaling up of artemisinin combination
120 therapy (ACT), mass distributions of long-lasting pyrethroid-insecticide treated nets (LLINs),
121 mandated laboratory confirmations, quality assurance for diagnoses, screening and
122 treatment for pregnant women, and enhanced surveillance and reporting.^{5,7}

123

124 After roughly ten years following the decree, it is crucial to objectively and quantitatively
125 measure the impact of these endeavours to ensure the effective and efficient deployment of
126 future control and elimination efforts. Routine surveillance data for malaria have increasingly
127 been utilised to set national and regional targets, estimate disease burden, and measure the

128 impact of control strategies.⁸ In Indonesia, malaria case surveillance and reporting coverage
129 improved significantly from covering only 26-50% of districts in 2010 to over 75% in 2015.⁵
130 However, these achievements in surveillance strengthening provide a challenge to
131 interpreting true temporal patterns of underlying case trends within the reported data.

132

133 In this study, we leveraged a decade of routine malaria surveillance data from the Indonesia
134 National Malaria Control Program (NMCP) to better understand the progress in malaria
135 control and elimination efforts across the diverse Indonesian landscape, developing an
136 inferential framework to adjust reported trends for the changes in surveillance capacity that
137 occurred during the period. We characterise the overall trends in metrics such as case
138 counts and test positivity ratios (TPR) and examine the shifts in malaria case profiles,
139 including proportions by parasite species, and the age and sex of cases. We then compared
140 their patterns to those that have been observed in other settings as they move toward
141 malaria elimination, such as *P. vivax* becoming the dominant malaria species,⁹⁻¹¹ an
142 increase in the average age of clinical disease,^{12,13} and an increase in the proportion of
143 cases in men, as exposure becomes more occupational-driven.^{9,14} Through this multi-
144 faceted lens, we aimed to uncover a more nuanced understanding of the trends of the 'true'
145 burden of malaria in Indonesia after a decade of increased malaria control efforts.

146

147 **Methods (566 words)**

148 **Indonesia routine malaria surveillance data**

149 We utilised monthly aggregated district-level malaria routine surveillance data from the
150 SISMAL (*Sistem Informasi Surveilans Malaria* or Malaria Surveillance and Information
151 System) platform of Indonesia NMCP from 2010 to 2019.¹⁵ For this study, monthly
152 aggregated malaria cases and tests data were used. The total number of malaria diagnostic

153 tests data are a combination of tests performed using either microscopy or rapid diagnostic
154 test (RDT). The aggregated case data were grouped by age, sex, and parasite species. The
155 age groups comprise 0-4 years old, 5-9 years old, 10-14 years old, and ≥ 15 years old. The
156 parasite species recorded were *P. falciparum*, *P. vivax*, *P. knowlesi*, *Plasmodium malariae*,
157 *Plasmodium ovale*, and mixed infections of *P. falciparum* and *P. vivax*. However, the
158 aggregated data did not cross-tabulate malaria cases across age groups or sex with parasite
159 species.

160

161 **Estimating trends of malaria metrics from routine**

162 **surveillance data**

163 We used Generalised Additive Models (GAMs) to produce estimates of overall regional
164 trends adjusted for reporting at the district level throughout 2010-2019, while capturing
165 complex non-linear trends between covariates and response variables using smooth
166 functions or splines.^{16,17} Each region of Indonesia (Sumatra, Java & Bali, Kalimantan, Nusa
167 Tenggara, Sulawesi, Maluku, and Papua) had a model fitted independently for each malaria
168 metric, incorporating district and month-year as random effects covariate and a penalised
169 smoothing spline covariate, respectively.

170

171 We employed GAM with a negative binomial family, to account for likely overdispersion in
172 the distributions of cases and tests, and population counts as the model offset variable to
173 model malaria cases and tests per 1,000 population. Metrics and case profiles measured as
174 proportions were modelled using GAMs with a binomial family and logistic link function. The
175 mgcv package in R¹⁸ was used for the implementation of GAM.

176

177 The malaria surveillance metrics and case profiles modelled are shown in **Table 1**, alongside
178 their respective distribution families. To estimate the regional-level trend lines for all metrics,
179 we calculated the weighted average values of all district-level trend lines within a region. The
180 weighting factors used were: 1) district-level population counts for modelled cases and tests;
181 2) modelled district-level tests for TPR; and 3) a combination of modelled district-level TPR
182 multiplied by modelled tests for proportions of *P. vivax* cases, cases in males, and cases in \geq
183 15 years old.

184

185 **Modelling the relationship between age of malaria cases** 186 **and malaria endemicity**

187 The previous section measured the relationship between the age of malaria cases (i.e., the
188 proportion of cases in adults) and malaria endemicity indirectly by comparing trends of both
189 metrics over time. Here, we developed a framework using a generalised linear model (GLM)
190 to directly analyse the relationship between malaria endemicity and age to see whether
191 consistent patterns were observed across all regions of Indonesia. We assumed a model
192 whereby the Annual Parasite Incidence (API) per 1,000 (at the log-scale) alters the mean
193 age of reported malaria cases (μ) on the geometric scale. The GLM was fitted to the
194 proportion of malaria cases by age groups (0-4, 5-9, 10-14, and \geq 15 years old). Each year's
195 district-level malaria case data were used for the model fitting process, filtering only
196 observations with at least 30 malaria cases reported to reduce the noise from the low-level
197 malaria case counts.

198

199 **Role of the funding source**

200 The funder of the study had no role in study design, data collection, data analysis, data
201 interpretation, or writing of the report.

202

203 **Results (953 words)**

204 **Figure 1** shows the national-level trends of several malaria metrics derived from the routine
205 malaria surveillance data between 2010 and 2019. The number of reported malaria cases
206 was reduced by half during this period, while malaria tests, which reflect surveillance efforts,
207 almost doubled within the same period (**Figure 1A**). Nationwide, *P. falciparum* and *P. vivax*
208 are the dominant malaria parasite species, with *P. falciparum* reported more frequently
209 throughout the decade (**Figure 1B**). Malaria cases per capita were found more frequently in
210 males (**Figure 1C**) and the youngest age groups (**Figure 1D**). However, those youngest age
211 groups also experienced the largest declines in the per capita malaria rate over the decade.

212

213 The geographical heterogeneity of malaria transmission in Indonesia is shown in **Figure 2**.
214 In most regions, both median and maximum district-level malaria endemicity and maximum
215 district-level incidence fell steadily throughout the study period (**Figure 2A**). However, some
216 districts, particularly in the Papua region (the easternmost region), showed considerable
217 differences in trends. Here, despite overall showing a progressive reduction in median
218 district-level malaria endemicity, some districts reported similar or higher API per 1,000 in
219 2019 relative to 2010 (**Figure 2B**).

220

221 **Figure 3** shows the region-level trends of several malaria metrics estimated by GAM
222 between 2010 and 2019, adjusting for reporting rates by district across the study period.
223 Over the decade, adjusted malaria incidence rates declined in all regions of the country
224 (**Figure 3A**). The declining trends differ from one region to another in terms of their

225 baselines and slopes. Hence, there are differences in the magnitudes of the decline, with the
226 highest reduction magnitude estimated in the Sumatra region (81.5-fold reduction) and the
227 lowest in the Papua region (3.6-fold). Cases per 1,000 population trends for each age group
228 are shown in **Figure S1**. These declines in malaria cases per 1,000 population were
229 estimated despite case-finding efforts showing no declining trend across all regions (**Figure**
230 **3B**). The estimated trends of testing efforts are shown on a per 1,000 population basis,
231 meaning that, in absolute terms, as the population grew over the years, the testing efforts
232 increased. The substantial reduction in malaria burden across all Indonesian regions is also
233 supported by the estimated test positivity ratio (TPR) trends, which show declines across all
234 regions (**Figure 3C**). However, in the Papua region, we observed an increase in adjusted
235 TPR in 2017 before declining again in the following years.

236

237 Cases were generally found in older populations, with increasing proportions of malaria
238 cases in adults over the years (**Figure 3D**). However, on a per capita basis, malaria burden
239 in children is still the highest (**Figure 1D**). Furthermore, malaria cases have become
240 increasingly male-dominant (**Figure 3E**), which could indicate a shift towards a higher
241 proportion of occupational exposures. In terms of malaria parasite species, there is no sign
242 that *P. vivax* became the largely dominant parasite species in any region (**Figure 3F**),
243 despite some regions experiencing slight shifts in species distribution. Notably, Nusa
244 Tenggara is the only region where there has been a consistent decline in the proportion of *P.*
245 *vivax* infections in the last years of the decade. Papua, on the other hand, is the only region
246 with consistent *P. falciparum*-dominant infections in the country.

247

248 The relationship between the different adjusted metric trends was estimated using
249 Spearman's rank correlation, combining model estimates from all regions and for each
250 region (**Figure 4**). There is a strong positive correlation between malaria cases and TPR at
251 both national and regional level, though somewhat less so in Papua region. Meanwhile,
252 decreases in both cases and TPR showed correlation with increases in the proportion of

253 cases that were adult, which itself was largely synchronised with increases in the proportion
254 of cases that were male. This trend of cases becoming typically older and male as
255 transmission declines was particularly strong in regions of historically lower endemicity (Java
256 & Bali, Sumatra, Sulawesi, Kalimantan). National-level increases in the proportion of cases
257 that were *P. falciparum* (**Figure 1B**) mask high regional-level correlations between declines
258 in transmission and the increasing role of *P. vivax* in all but the two regions with the highest
259 burden (Nusa Tenggara and Papua).

260

261 Finally, we investigated how malaria endemicity (as measured by API per 1,000) shapes the
262 age-profile of reported cases using GLM. **Figure 5** illustrates the relationship between API
263 per 1,000 and the proportion of cases in the population aged 0-4, 5-9, 10-14, and ≥ 15 years
264 old. In low-endemic settings (for example, Java & Bali), cases are dominated by adults, but
265 the proportion of cases in children increases as endemicity increases. Model parameters
266 convergence and validation, as well as proportion of cases by age group (in selected
267 districts representing the upper, middle, and lower quantiles of API) are shown in **Figure S2**,
268 **S3**, and **S4**. **Figure S5** shows the combined modelled relationship between API per 1,000
269 and the proportions of those age groups.

270

271 **Figure 6** shows the geographic distribution of outliers to the GLM results, whereby model
272 estimates of the proportion of adults, generated using district-level case counts (**Figure 6A**)
273 are compared to those observed in the data (**Figure 6B**). As **Figure 6C** shows, 84% of 400
274 districts reporting their malaria data in 2019 fall within the -20% to 20% difference bracket
275 between data and model estimates, which interval arbitrarily chosen to visualise 'no
276 difference' between them. Those that lie beyond this threshold include clusters of districts
277 within Sumatra in 2019 that coincides with some of the steepest declines in API in the study

278 period, where a higher proportion of children than expected appear in case-data than
279 expected by the model. A similar pattern is also seen in low-endemic districts in western
280 Kalimantan. This contrasts, however, eastern Kalimantan where districts often report higher
281 than expected cases in adults throughout the study period.

282

283 **Discussion (1,523 words)**

284 Our analysis highlights the heterogeneity in progress towards malaria elimination across
285 Indonesia despite a major decline in malaria cases that occurred nationally between 2010
286 and 2019. While national-level malaria data would suggest stagnation in progress since
287 2015, sub-national trends tell a different story. In regions covering more than 95% of the
288 country's population, malaria cases have steadily decreased. Furthermore, while regions
289 had differences in malaria transmission at baseline, progress towards malaria elimination in
290 those regions also happened at different paces. Trends in raw national-level data have
291 become increasingly dominated by high-endemic regions such as Nusa Tenggara, Maluku,
292 and Papua, where only 7% of the population resides (19 million people) but which
293 represented 95% of reported malaria cases in 2019, rising from 73% in 2010 (Papua region,
294 2% population, ~40% contribution to ~90%).

295

296 When data are considered at the region level, further divergence in trends between regions
297 with lower and higher baseline endemicity emerges, with the four lowest endemicity regions
298 (Java & Bali, Sumatra, Sulawesi, Kalimantan) showing clear patterns of a steadily rising
299 proportion of cases in males and adults as transmission has declined. These findings are
300 typically a sign of occupational-driven exposure, where transmission occurs in high malaria-
301 risk settings such as forests and mines, far from human settlements.^{4,19,20} This suggests that
302 control strategies in these regions may need to be reoriented to address these particular
303 demographic groups more effectively.

304

305 Meanwhile, a concomitant shift in malaria species to *P. vivax* supports the need for effective
306 approaches to achieving radical cure and elimination of the hypnozoite reservoir. A recent
307 randomised control trials study showed that co-administration of single dose tafenoquine
308 with dihydroartemisinin-piperaquine did not show a clinically meaningful benefit and thus
309 does not support the combination as a radical cure for *P. vivax* in countries using ACT for *P.*
310 *vivax* treatment,²¹ such as Indonesia. Short-course (7-day) regimen of primaquine might
311 improve adherence and effectiveness of *P. vivax* radical cure, but it requires G6PD testing
312 available at health facilities to ensure safety.²² Alternatively, community health centre-based
313 strategies, such as supervised 14-day primaquine courses, may improve treatment
314 adherence and lower *P. vivax* recurrence.^{23,24} However, addressing structural barriers
315 hindering patient adherence is important to ensure their success.²⁵

316

317 Our results also highlight the value of examining the relationship between surveillance
318 metrics to identify districts where control measures may not be working as expected. When
319 considering the relationship between case incidence and age of people with reported cases
320 we found distinct patterns of younger than expected age-patterns emerging in clusters of
321 districts in the northern province of Aceh, Sumatra and western provinces of Kalimantan.
322 Many of these districts were those which had experienced some of the highest decline in
323 malaria incidence over the past decade (i.e., from API per 1,000 > 100 to API per 1,000 <
324 10). This may implicate a role of residual immunity in adults¹² and so this outlier status may
325 prove transient. However, for some districts in the central region of Sumatra, deforestation
326 due to increased mining and plantation activities has also increased malaria risks in the
327 nomadic indigenous population, with malaria prevalence as high as 24%.²⁶ Such pockets of
328 community-based transmission, in a wider landscape of largely occupational exposure,
329 would also contribute to the younger than typical demographics of observed cases in the
330 region. This highlights the importance of protecting indigenous population from malaria to
331 progress malaria elimination in this region. Meanwhile, we found that nationwide, in terms of
332 having an older than expected age distribution for their given endemicity, the largest outliers

333 were clustered within the remaining districts with API > 10 on Kalimantan, towards the east
334 of the island. This region is well-known as an area of primarily occupational-driven exposure
335 through agriculture and forest-related activities,^{20,27–29} highlighting the key ecological and
336 economic issues that will need to be addressed in order for malaria elimination to be
337 achievable in the region.

338

339 Maintaining progress toward elimination and optimising control in lower endemic regions
340 remains an important consideration, yet the overwhelming and increasing percentage
341 contribution of the Papua region to national case trends highlights this region as providing
342 the largest obstacle to Indonesia's elimination targets. In this region, case demographics
343 indicate that a decade after the scale-up of vector control, transmission remains firmly
344 embedded within the community and the household. Understanding ongoing barriers to
345 progress in this region is key to ensuring progress at the national level. Still, such barriers
346 are likely to vary at the local level, with districts in western Papua region showing sustained
347 reductions whilst districts in the east of the region experienced resurgences in API in the
348 latter part of the decade. An increase in cases reported was also partly due to the increase
349 in the number of tests reported in the late 2010s. However, this resurgence also mirrored the
350 trends observed in the neighbouring country Papua New Guinea.^{30,31} Further research is
351 needed to explore whether the drivers of the resurgences in these regions were similar and
352 how cross-border transmission contributes to risk.

353

354 Furthermore, the need for innovative and novel interventions in the Papua region is evident.
355 Mass drug administration campaigns were conducted in several districts in Papua in 2023.
356 The impact of these campaigns will be investigated. However, the expert committee in
357 Indonesia has not recommended the current malaria vaccine (RTS and R21) to children in
358 Papua because the level of severe disease is relatively low, and routine immunisation
359 coverage in Papua is also low. The additional resources required for the malaria vaccine to
360 be included within the routine immunisation programs would add an unreasonable burden to

361 Essential Program on Immunisation (EPI) programs when it is known that the vaccine
362 coverage will not be as high as expected and likely too low to achieve the same success as
363 observed in African countries that are deploying the tool. It may be possible to include
364 vaccine development efforts (including ones effective in adults and targeting *P. vivax*), other
365 chemopreventive interventions (e.g. intermittent preventive treatment of malaria in
366 pregnancy, IPTp³²), and other vector control tools, such as larval source management, to
367 strengthen existing control efforts aimed at rapidly reducing the malaria burden in Papua.

368

369 Trends in endemicity levels, case demographics and *Plasmodium* species composition
370 provide less of a clear relationship in Nusa Tenggara and Maluku when aggregated at the
371 regional level. This is likely to be in part due to the high levels of between-province and
372 between-district heterogeneity within these regions. For example, in Nusa Tenggara the
373 counter-intuitive increase in proportion of cases attributable to *P. vivax* in the context of a
374 wider decrease in transmission is more readily explainable by region-level cases becoming
375 increasingly concentrated in the southern archipelagic islands of Sumba and Timor
376 (representing 86% of cases in Nusa Tenggara in 2019), where transmission has declined to
377 a lesser extent than in other districts, and *Plasmodium* species composition remain largely
378 unchanged. Meanwhile, for the remainder of the region (representing 75% of the total
379 population), sustained declines in cases have coincided with a steady increase in the
380 contribution of *P. vivax*, mirroring trends in other regions of Indonesia where cases have
381 fallen to low levels.

382

383 Though better quantification of the heterogeneous landscape of malaria in Indonesia is
384 crucial for improved malaria control, understanding the drivers of this heterogeneity is
385 complex, particularly as the scaling up of malaria has coincided with many other ongoing
386 climactic, environmental and societal trends occurring within the country. This includes
387 changes in land-use due to agricultural expansion, deforestation, and other land-use
388 modifications³³⁻³⁵ and variations in climate factors such as temperature, rainfall, and humidity

389 across different regions of the country and climate variability may have contributed to the
390 observed trends and regional differences.³⁶ Finally, the capital relocation project from
391 Jakarta to East Kalimantan might pose an additional risk of increased local transmission in
392 the region due to the influx of malaria-naïve populations, the availability of malaria vectors,
393 and its proximity to malaria-endemic districts.³⁷ Further investigation into the interplay of
394 these factors could provide a more nuanced understanding of the changes in malaria
395 incidence observed throughout the decade.

396

397 Despite not examining the emergence of zoonotic malaria infections in the country, we also
398 note the need for enhanced diagnostics and surveillance capacity. Past studies have shown
399 how misdiagnosis was prevalent in areas with high risk of *P. knowlesi* infections.^{38,39}
400 Furthermore, as *P. knowlesi* becomes the dominant malaria infection in neighbouring
401 Malaysia Borneo,⁴⁰ a recent survey in one of Indonesia's bordering districts found that it is
402 not the case yet in the Indonesia part of the island.²⁹ More extensive surveillance is needed
403 to confirm that *P. knowlesi* is currently not a threat to malaria elimination efforts in the
404 country.

405

406 In conclusion, while significant progress has been made in the past decade towards malaria
407 elimination in Indonesia, much work remains. Issues around malaria in mobile and migrant
408 populations, changing environment and climate, zoonotic malaria, reducing *P. vivax*
409 hypnozoite reservoirs, and, most importantly, malaria control in high transmission areas will
410 be the main challenges as Indonesia works towards their malaria elimination goals. This
411 study underscores the need for locally tailored interventions and greater inter-district
412 cooperation to tackle malaria importation. These are crucial steps for Indonesia as it
413 continues its ambitious goal of eliminating malaria.

414

415 **Contributors**

416 BAD, ESS, TSC, IRFE, and PGTW conceived and designed the study. SBF, HDP, and RTP
417 collected, verified, and provided data interpretation. BAD, ESS, TSC, and PGTW were
418 involved in the data analysis and interpretation. BAD and PGTW drafted the paper. BAD,
419 ESS, TSC, SBF, HDP, HH, RTP, KDL, IRFE, and PGTW critically revised the manuscript for
420 important intellectual content, and all authors gave final approval for the version to be
421 published.

422

423 **Conflict of interest**

424 The authors declare no conflict of interest.

425

426 **Disclaimer**

427 The views in this article are those of the authors and do not necessarily represent the views,
428 decisions, or policies of the institutions with which the authors are affiliated.

429

430 **Acknowledgements**

431 BAD, ESS, TSC and PW acknowledge funding from the MRC Centre for Global Infectious
432 Disease Analysis (reference MR/X020258/1), jointly funded by the UK Medical Research
433 Council (MRC) and the UK Foreign, Commonwealth & Development Office (FCDO), under
434 the MRC/FCDO Concordat agreement and is also part of the EDCTP2 programme
435 supported by the European Union. ESS is funded by a UKRI Future Leaders Fellowship from
436 the Medical Research Council ([MR/T041986/1](#)).

437

438 References

- 439 1 Elyazar IRF, Hay SI, Baird JK. Chapter Two - Malaria Distribution, Prevalence, Drug
440 Resistance and Control in Indonesia. In: Rollinson D, Hay SI, eds. *Advances in*
441 *Parasitology*. Academic Press, 2011: 41–175.
- 442 2 Elyazar IRF, Sinka ME, Gething PW, *et al.* Chapter Three - The Distribution and
443 Bionomics of Anopheles Malaria Vector Mosquitoes in Indonesia. In: Rollinson D, ed.
444 *Advances in Parasitology*. Academic Press, 2013: 173–266.
- 445 3 Lempang MEP, Dewayanti FK, Syahrani L, *et al.* Primate malaria: An emerging challenge
446 of zoonotic malaria in Indonesia. *One Health* 2022; **14**: 100389.
- 447 4 Ekawati LL, Johnson KC, Jacobson JO, *et al.* Defining malaria risks among forest workers
448 in Aceh, Indonesia: a formative assessment. *Malar J* 2020; **19**: 441.
- 449 5 Sitohang V, Sariwati E, Fajariyani SB, *et al.* Malaria elimination in Indonesia: halfway
450 there. *Lancet Glob Health* 2018; **6**: e604–6.
- 451 6 Departemen Kesehatan. Keputusan Menteri Kesehatan Republik Indonesia Nomor
452 293/MENKES/SK/IV/2009 28 April 2009 tentang Eliminasi Malaria di Indonesia. Jakarta:
453 Direktorat Pemberantasan Penyakit Bersumber Binatang, Departemen Kesehatan ...,
454 2009.
- 455 7 The Global Fund. The Global Fund - Indonesia - Grant Implementation. 2024.
456 <https://data.theglobalfund.org/location/IDN/grants> (accessed Jan 12, 2024).
- 457 8 Alegana VA, Okiro EA, Snow RW. Routine data for malaria morbidity estimation in Africa:
458 challenges and prospects. *BMC Med* 2020; **18**: 121.
- 459 9 Cotter C, Sturrock HJ, Hsiang MS, *et al.* The changing epidemiology of malaria
460 elimination: new strategies for new challenges. *The Lancet* 2013; **382**: 900–11.
- 461 10 Ferreira MU, Castro MC. Malaria Situation in Latin America and the Caribbean: Residual
462 and Resurgent Transmission and Challenges for Control and Elimination. In: Arie F, Gay
463 F, Ménard R, eds. *Malaria Control and Elimination*. New York, NY: Springer, 2019: 57–70.
- 464 11 Howes RE, Battle KE, Mendis KN, *et al.* Global Epidemiology of Plasmodium vivax. *Am J*
465 *Trop Med Hyg* 2016; **95**: 15–34.
- 466 12 Griffin JT, Ferguson NM, Ghani AC. Estimates of the changing age-burden of
467 Plasmodium falciparum malaria disease in sub-Saharan Africa. *Nat Commun* 2014; **5**:
468 3136.
- 469 13 Snow RW, Omumbo JA, Lowe B, *et al.* Relation between severe malaria morbidity in
470 children and level of Plasmodium falciparum transmission in Africa. *Lancet* 1997; **349**:
471 1650–4.
- 472 14 Sandfort M, Vantaux A, Kim S, *et al.* Forest malaria in Cambodia: the occupational and
473 spatial clustering of Plasmodium vivax and Plasmodium falciparum infection risk in a
474 cross-sectional survey in Mondulkiri province, Cambodia. *Malar J* 2020; **19**: 413.
- 475 15 Subdirektorat Malaria Kementerian Kesehatan Republik Indonesia. Petunjuk Teknis
476 Pencatatan dan Pelaporan Program Malaria Menggunakan Aplikasi SISMAL. Jakarta,
477 2018.
- 478 16 Pedersen EJ, Miller DL, Simpson GL, Ross N. Hierarchical generalized additive models in
479 ecology: an introduction with mgcv. *PeerJ* 2019; **7**: e6876.
- 480 17 Simpson GL. Modelling Palaeoecological Time Series Using Generalised Additive
481 Models. *Front Ecol Evol* 2018; **6**.
482 <https://www.frontiersin.org/article/10.3389/fevo.2018.00149> (accessed Jan 14, 2022).
- 483 18 Wood SN. mgcv: Mixed GAM Computation Vehicle with Automatic Smoothness
484 Estimation. 2021; published online Oct 6. [https://cran.r-](https://cran.r-project.org/web/packages/mgcv/index.html)
485 [project.org/web/packages/mgcv/index.html](https://cran.r-project.org/web/packages/mgcv/index.html).
- 486 19 Herdiana H, Cotter C, Coutrier FN, *et al.* Malaria risk factor assessment using active and
487 passive surveillance data from Aceh Besar, Indonesia, a low endemic, malaria elimination
488 setting with Plasmodium knowlesi, Plasmodium vivax, and Plasmodium falciparum. *Malar*
489 *J* 2016; **15**: 468.

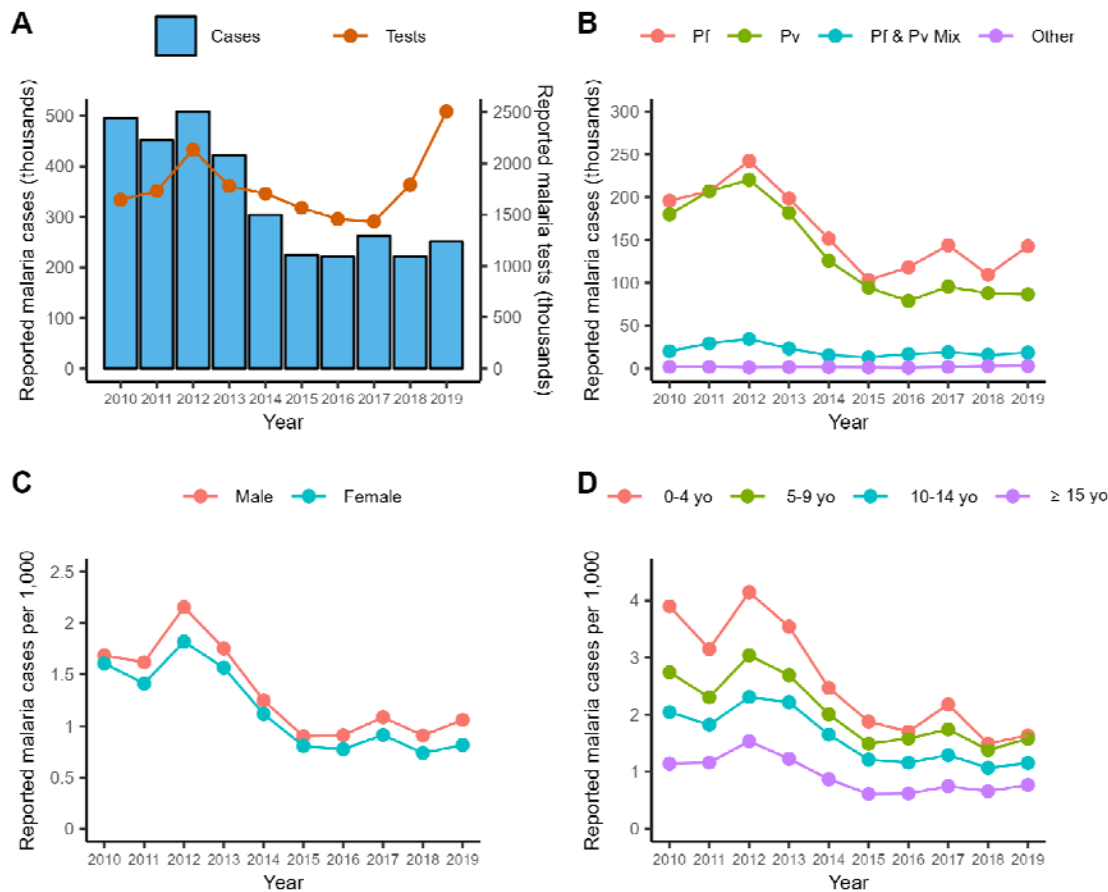
- 490 20 Rahayu N, Suryatinah Y, Kusumaningtyas H. Discovery of Malaria Cases on Forest
491 Workers In Public Health Center, Teluk Kepayang, Tanah Bumbu, South Kalimantan. *BIO*
492 *Web Conf* 2020; **20**: 01008.
- 493 21 Sutanto I, Soebandrio A, Ekawati LL, *et al.* Tafenoquine co-administered with
494 dihydroartemisinin–piperaquine for the radical cure of Plasmodium vivax malaria
495 (INSPECTOR): a randomised, placebo-controlled, efficacy and safety study. *Lancet Infect*
496 *Dis* 2023; **23**: 1153–63.
- 497 22 Taylor WRJ, Thriemer K, Seidlein L von, *et al.* Short-course primaquine for the radical
498 cure of Plasmodium vivax malaria: a multicentre, randomised, placebo-controlled non-
499 inferiority trial. *The Lancet* 2019; **394**: 929–38.
- 500 23 Douglas NM, Poespoprodjo JR, Patriani D, *et al.* Unsupervised primaquine for the
501 treatment of Plasmodium vivax malaria relapses in southern Papua: A hospital-based
502 cohort study. *PLOS Med* 2017; **14**: e1002379.
- 503 24 Poespoprodjo JR, Burdam FH, Candrawati F, *et al.* Supervised versus unsupervised
504 primaquine radical cure for the treatment of falciparum and vivax malaria in Papua,
505 Indonesia: a cluster-randomised, controlled, open-label superiority trial. *Lancet Infect Dis*
506 *2022*; **22**: 367–76.
- 507 25 Rahmalia A, Poespoprodjo JR, Landuwulang CUR, *et al.* Adherence to 14-day radical
508 cure for Plasmodium vivax malaria in Papua, Indonesia: a mixed-methods study. *Malar J*
509 *2023*; **22**: 162.
- 510 26 Plasmanto G. Zoonotic malaria threatens indigenous Orang Rimba in Jambi. Ekuatorial.
511 2022; published online Feb 15. [https://www.ekuatorial.com/en/2022/02/zoonotic-malaria-](https://www.ekuatorial.com/en/2022/02/zoonotic-malaria-threatens-indigenous-orang-rimba-in-jambi/)
512 [threatens-indigenous-orang-rimba-in-jambi/](https://www.ekuatorial.com/en/2022/02/zoonotic-malaria-threatens-indigenous-orang-rimba-in-jambi/) (accessed Dec 12, 2022).
- 513 27 Ompusunggu S. Malaria hutan di Provinsi Kalimantan Tengah dan Kalimantan Selatan,
514 Indonesia tahun 2013. *Indones J Health Ecol* 2015; **14**: 145–56.
- 515 28 Rohmah K. Perkuat Regulasi untuk Percepatan Eliminasi Malaria di Kaltim. East
516 Kalimantan Prov. Off. Website. 2023; published online July 18.
517 [https://diskominfo.kaltimprov.go.id/kesehatan/perkuat-regulasi-untuk-percepatan-](https://diskominfo.kaltimprov.go.id/kesehatan/perkuat-regulasi-untuk-percepatan-eliminasi-malaria-di-kaltim)
518 [eliminasi-malaria-di-kaltim](https://diskominfo.kaltimprov.go.id/kesehatan/perkuat-regulasi-untuk-percepatan-eliminasi-malaria-di-kaltim) (accessed Sept 26, 2023).
- 519 29 Sugiarto SR, Baird JK, Singh B, Elyazar I, Davis TME. The history and current
520 epidemiology of malaria in Kalimantan, Indonesia. *Malar J* 2022; **21**: 327.
- 521 30 Hetzel MW, Pulford J, Gouda H, Hodge A, Siba P, Mueller I. The Papua New Guinea
522 national malaria control program: primary outcome and impact indicators, 2009-2014.
523 2014.
- 524 31 Hetzel MW, Saweri OP, Kuadima JJ, *et al.* Papua New Guinea malaria indicator survey
525 2016-2017: malaria prevention, infection and treatment. 2018.
- 526 32 Ahmed R, Poespoprodjo JR, Syafruddin D, *et al.* Efficacy and safety of intermittent
527 preventive treatment and intermittent screening and treatment versus single screening
528 and treatment with dihydroartemisinin–piperaquine for the control of malaria in pregnancy
529 in Indonesia: a cluster-randomised, open-la. *Lancet Infect Dis* 2019; **0**.
530 DOI:10.1016/S1473-3099(19)30156-2.
- 531 33 CSIRO. Zoonotic Malaria and land use in Indonesia. 2023; published online July 16.
532 [https://www.csiro.au/en/work-with-us/industries/agriculture/sustainable-food-and-](https://www.csiro.au/en/work-with-us/industries/agriculture/sustainable-food-and-agriculture-systems/understanding-and-navigating-global-change-in-our-food-systems/linking-malaria-and-land-use)
533 [agriculture-systems/understanding-and-navigating-global-change-in-our-food-](https://www.csiro.au/en/work-with-us/industries/agriculture/sustainable-food-and-agriculture-systems/understanding-and-navigating-global-change-in-our-food-systems/linking-malaria-and-land-use)
534 [systems/linking-malaria-and-land-use](https://www.csiro.au/en/work-with-us/industries/agriculture/sustainable-food-and-agriculture-systems/understanding-and-navigating-global-change-in-our-food-systems/linking-malaria-and-land-use) (accessed July 17, 2023).
- 535 34 Moyes CL, Shearer FM, Huang Z, *et al.* Predicting the geographical distributions of the
536 macaque hosts and mosquito vectors of Plasmodium knowlesi malaria in forested and
537 non-forested areas. *Parasit Vectors* 2016; **9**: 242.
- 538 35 van de Straat B, Sebayang B, Grigg MJ, *et al.* Zoonotic malaria transmission and land use
539 change in Southeast Asia: what is known about the vectors. *Malar J* 2022; **21**: 109.
- 540 36 Meteorology, Climatology, and Geophysical Agency of Indonesia. Climate Variability of
541 Indonesia. 2022. [https://iklim.bmkg.go.id/publikasi-](https://iklim.bmkg.go.id/publikasi-klimat/ftp/brosur/LEAFLETINGGRISB.pdf)
542 [klimat/ftp/brosur/LEAFLETINGGRISB.pdf](https://iklim.bmkg.go.id/publikasi-klimat/ftp/brosur/LEAFLETINGGRISB.pdf) (accessed July 16, 2023).
- 543 37 Bin Said I, Kouakou YI, Omorou R, *et al.* Systematic review of Plasmodium knowlesi in
544 Indonesia: a risk of emergence in the context of capital relocation to Borneo? *Parasit*

- 545 *Vectors* 2022; **15**: 258.
- 546 38 Barber BE, William T, Grigg MJ, Yeo TW, Anstey NM. Limitations of microscopy to
547 differentiate *Plasmodium* species in a region co-endemic for *Plasmodium falciparum*,
548 *Plasmodium vivax* and *Plasmodium knowlesi*. *Malar J* 2013; **12**: 8.
- 549 39 Coutrier FN, Tirta YK, Cotter C, *et al.* Laboratory challenges of *Plasmodium* species
550 identification in Aceh Province, Indonesia, a malaria elimination setting with newly
551 discovered *P. knowlesi*. *PLoS Negl Trop Dis* 2018; **12**: e0006924.
- 552 40 Chin AZ, Avoi R, Atil A, *et al.* Risk factor of plasmodium knowlesi infection in Sabah
553 Borneo Malaysia, 2020: A population-based case-control study. *PLOS ONE* 2021; **16**:
554 e0257104.
- 555

556 **Table 1.** The malaria surveillance metrics and cases profiles modelled and their respective
557 distribution families.

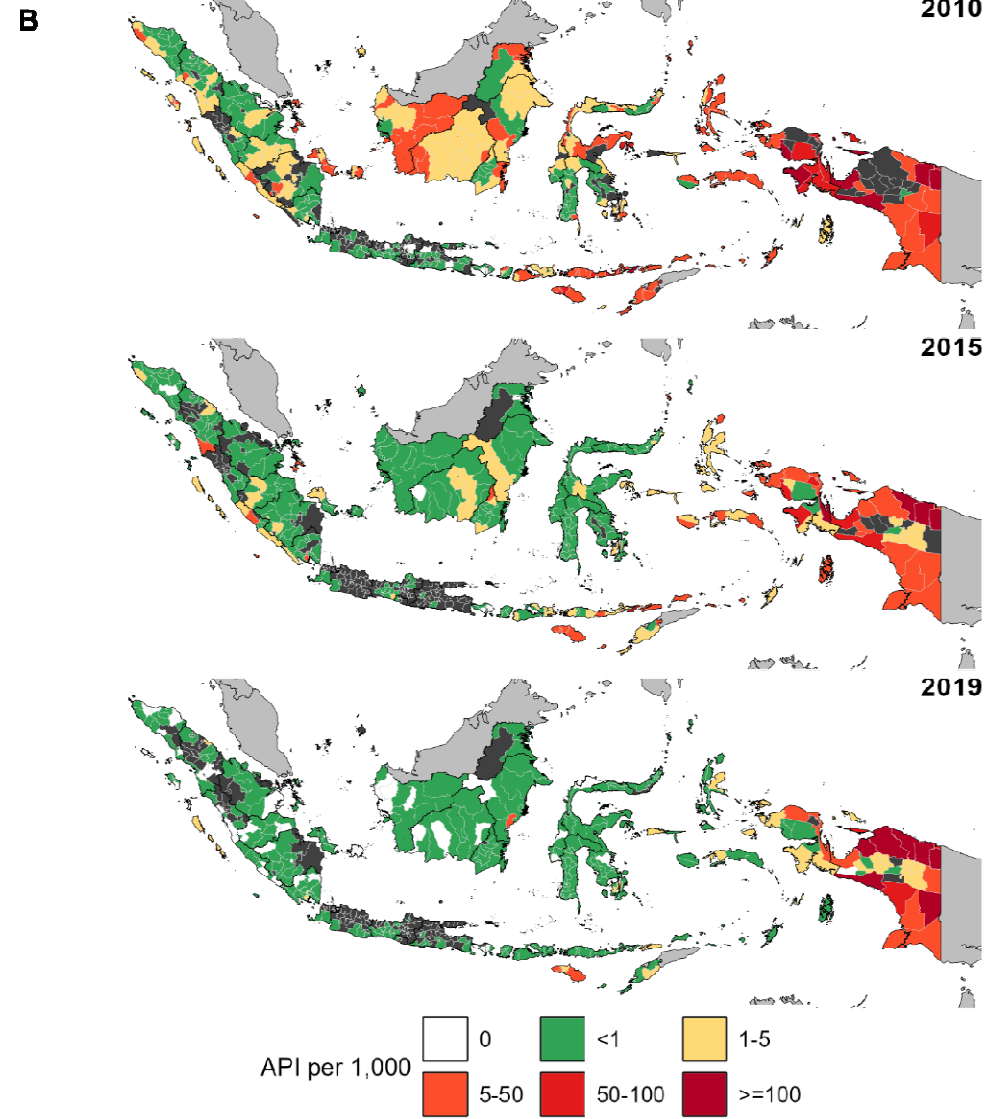
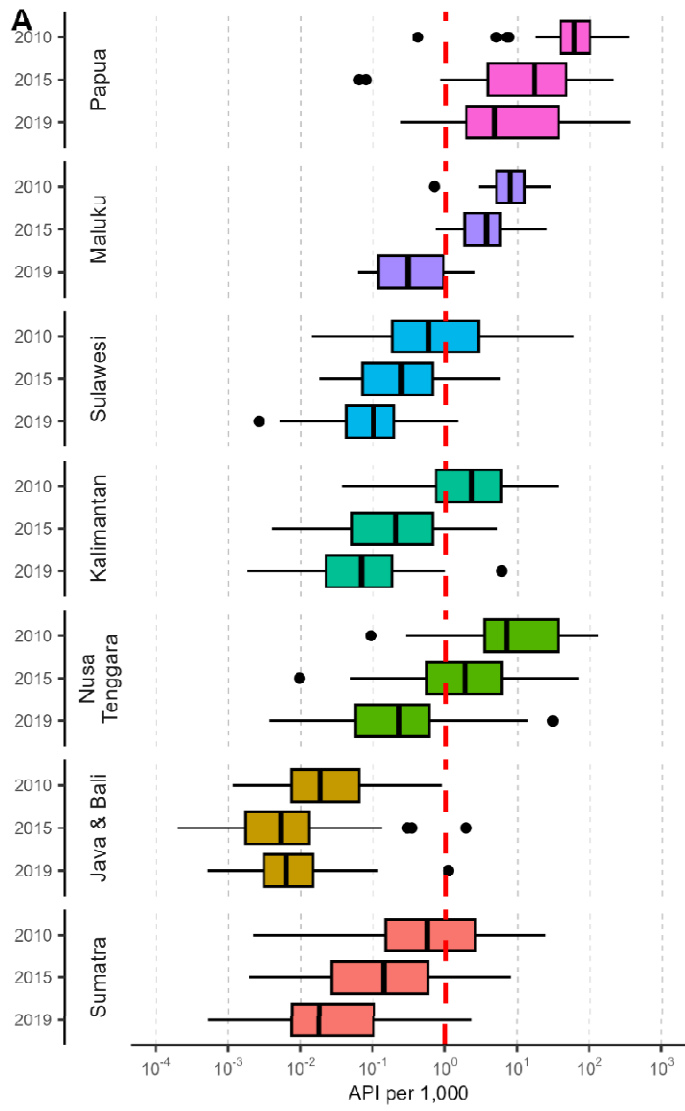
Malaria surveillance metrics and case profiles	Distribution family
Cases per 1,000 population (overall and by age groups)	Negative binomial
Tests per 1,000 population	Negative binomial
Test positivity ratio (TPR, %)	Binomial (logit)
Proportion of ≥ 15 years old cases (%)	Binomial (logit)
Proportion of cases in males (%)	Binomial (logit)
Proportion of <i>P. vivax</i> cases (%)	Binomial (logit)

558

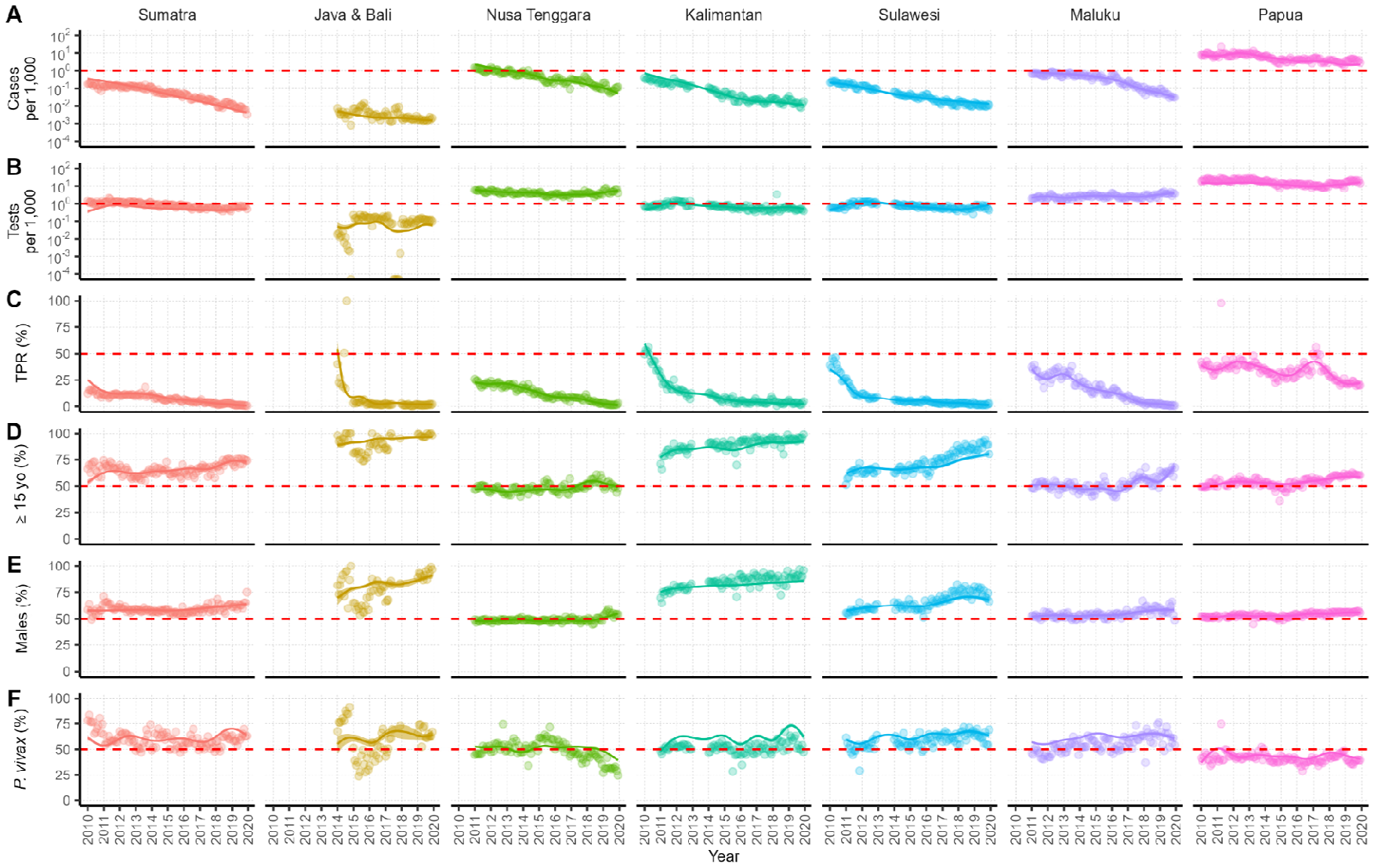


559

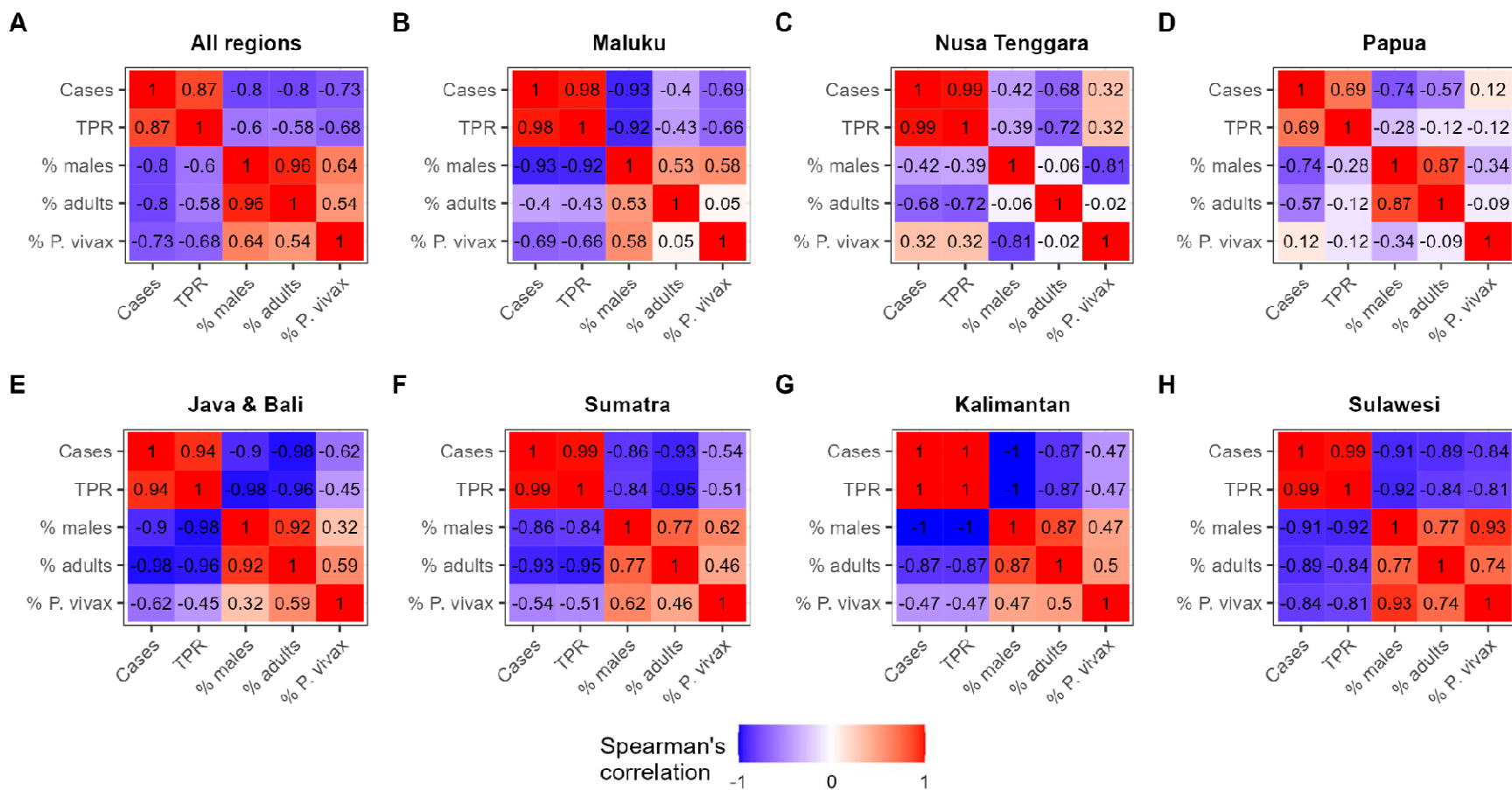
560 **Figure 1.** National-level trends of several malaria metrics, calculated yearly, derived from routine malaria
561 surveillance data. **A)** reported malaria cases and tests performed; **B)** reported malaria cases by parasite
562 species; **C)** reported malaria cases by sex; and **D)** reported malaria cases by age groups.



564 **Figure 2.** Distributions of malaria incidence in Indonesia. **A)** Within-region boxplots of API per 1,000 in 2010, 2015, and 2019 (from the top to the bottom row,
565 respectively); and **B)** Geographical distributions of API per 1,000 at the district-level in 2010, 2015, and 2019. Dark greys denote no data was available.



567 **Figure 3.** Regional-level monthly trends of several malaria metrics derived from routine malaria surveillance data. Solid lines and the shaded areas denote the median
568 and 95% credible intervals of the modelled trends using GAM. The semi-transparent points denote region-level monthly averages from data. The metrics shown are: **A)**
569 cases per 1,000; **B)** tests per 1,000; **C)** TPR (%); **D)** proportion of cases in ≥ 15 years old age group (%); **E)** proportion of cases in males (%); and **F)** proportion of *P.*
570 *vivax* cases (%). Red dashed line is included as a fixed value to aid comparison between areas.

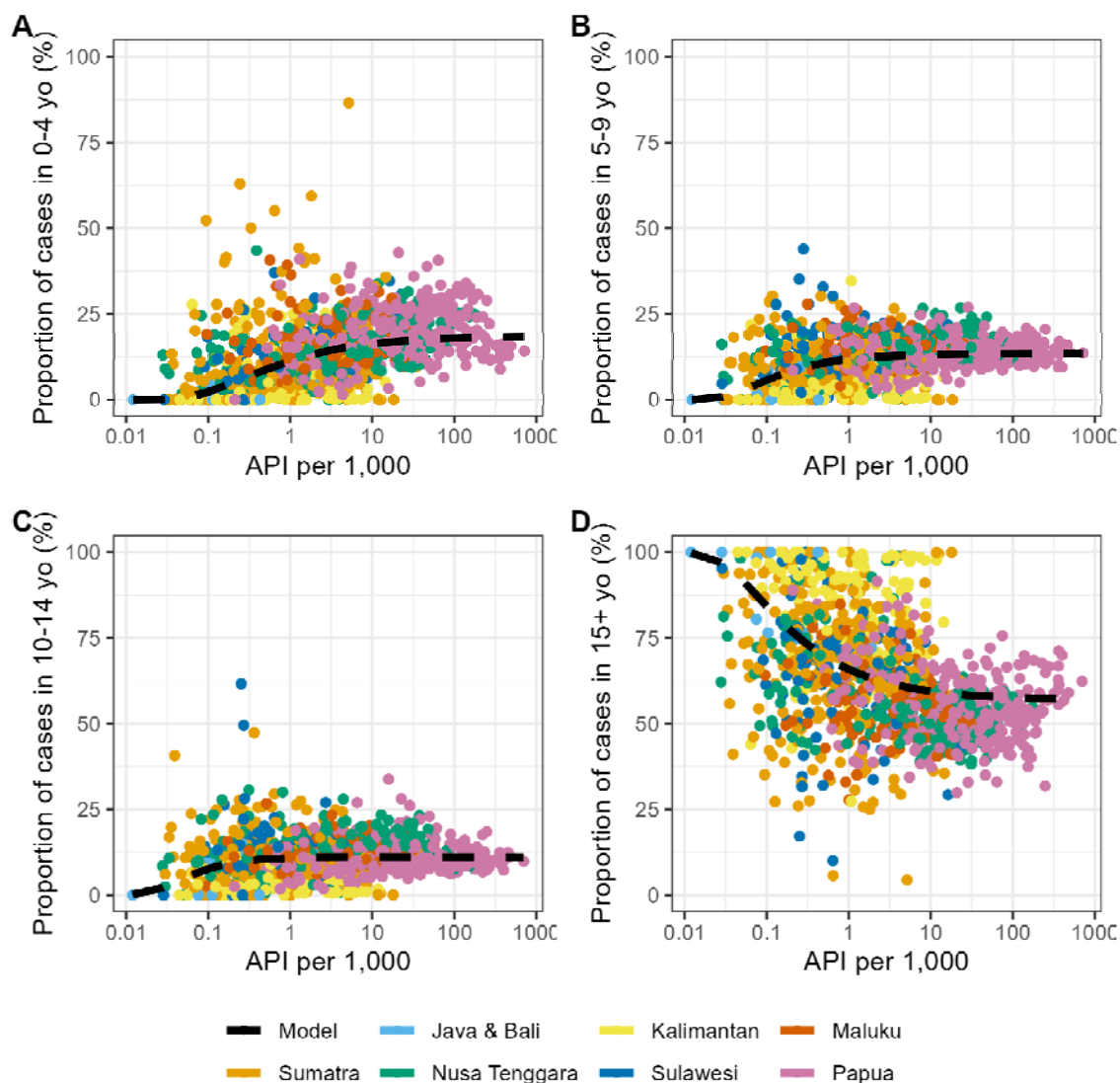


571

572 **Figure 4.** Spearman's rank correlations between the modelled monthly estimates of malaria metrics using GAM. Red denotes positive correlations, while blue denotes

573 negative correlations between metrics. **A)** All regions; **B), C) & D)** Regions with the highest malaria endemicity: Maluku, Nusa Tenggara, and Papua, respectively; **E),**

574 **F), G) & H)** Regions with the lowest malaria endemicity: Java & Bali, Sumatra, Kalimantan, and Sulawesi.



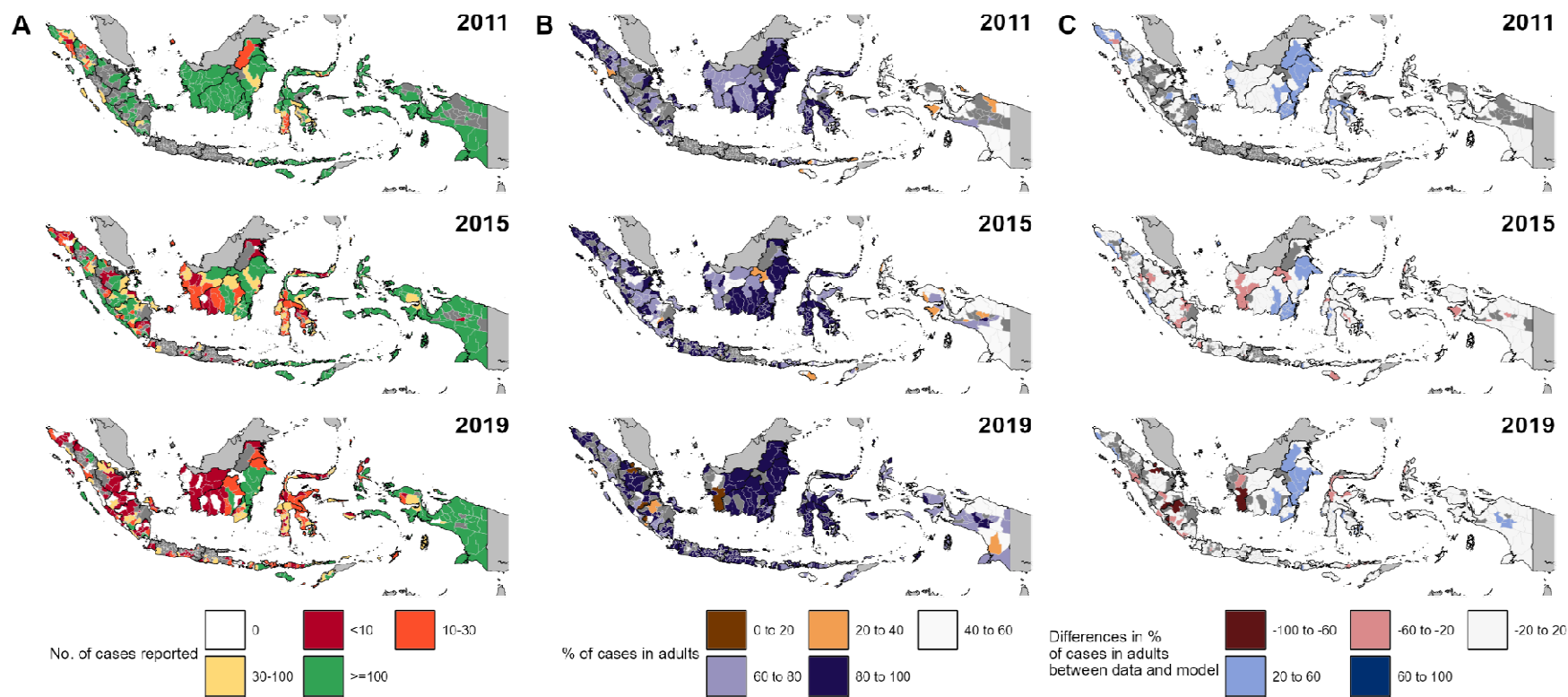
575

576 **Figure 5.** Modelled relationships between API per 1,000 and the proportion of cases in **A)** 0-4 years old; **B)**

577 5-9 years old; **C)** 10-14 years old; and **D)** ≥ 15 years old, with overlaid data from routine surveillance.

578 Dashed lines denote the median of generalised linear model (GLM) estimates of the relationship. The

579 colours of the data points represent regions.



580

581 **Figure 6.** Maps highlighting the proportion of malaria cases in adults in Indonesia. The top, middle, and bottom rows represent 2011, 2015, and 2019, respectively.

582 **A)** District-level maps of the number of malaria cases reported within a year, serving as ‘sample size’ of the calculated proportions from data. Districts reporting low

583 case counts are coloured in red, representing low sample sizes to infer proportions presented in **B)**, while districts reporting high case counts are coloured in green,

584 representing high sample sizes; **B)** District-level maps of the reported proportion of malaria cases in adults. Brown colours denote districts where children dominated

585 the reported malaria cases, while districts coloured in purple denote adult-dominant malaria cases; and **C)** District-level maps of the difference between the proportion

586 of malaria cases in adults based on reported data and the model average, as shown in **Figure 5**. Red colours denote districts with lower proportions of cases in adults
587 than the model average, while blue colours denote districts with proportions of cases in adults higher than the model average.