

## Supplementary Material

### Rainfall and Temperature Modify Effects of On-Site Sanitation Intervention on *E. coli* Contamination in Bangladeshi Households

Caitlin G. Niven<sup>1\*</sup>, Mahfuza Islam<sup>2</sup>, Anna Nguyen<sup>3</sup>, Andrew Mertens<sup>4</sup>, Amy J. Pickering<sup>5,6</sup>, Laura H. Kwong<sup>2</sup>, Mahfuja Alam<sup>7</sup>, Debashis Sen<sup>7</sup>, Sharmin Islam<sup>7</sup>, Mahbubur Rahman<sup>7</sup>, Leanne Unicom<sup>7</sup>, Alan E. Hubbard<sup>4</sup>, Stephen P. Luby<sup>8</sup>, Jessica A. Grembi<sup>8</sup>, John M. Colford, Jr.<sup>4</sup>, Benjamin F. Arnold<sup>9</sup>, Jade Benjamin-Chung<sup>3,6</sup>, Ayse Ercumen<sup>1</sup>

1. Department of Forestry and Environmental Resources, North Carolina State University, Raleigh, NC 27695
2. Division of Environmental Health Sciences, School of Public Health, University of California, Berkeley, CA 94720
3. Department of Epidemiology & Population Health, Stanford University School of Medicine, Stanford, CA 94305
4. Division of Epidemiology and Biostatistics, School of Public Health, University of California, Berkeley, CA 94720
5. Department of Civil and Environmental Engineering, University of California, Berkeley, CA 94720
6. Chan Zuckerberg Biohub, San Francisco, CA 94158
7. Environmental Health and WASH, Health System and Population Studies Division, icddr, Dhaka -1212, Bangladesh
8. Division of Infectious Diseases and Geographic Medicine, Stanford University School of Medicine, Stanford, CA 94305
9. Francis I. Proctor Foundation, University of California, San Francisco, CA 94143

\*Corresponding Author: Caitlin G. Niven, Jordan Hall Addition 2225, Raleigh, NC, 27606,  
+1 (415) 425 2910, [cgniven@ncsu.edu](mailto:cgniven@ncsu.edu)

Funding Sources: Bill & Melinda Gates Foundation, National Institutes of Health (NIH)

## Table of Contents

<b>Table S1:</b> Number of samples collected by sample type and study round _____	<b>Page 2</b>
<b>Table S2:</b> Percentages of samples within each weather category across different antecedent timeframes _____	<b>Page 2</b>
<b>Table S3:</b> Intervention effects from improved on-site sanitation on log <sub>10</sub> -transformed <i>E. coli</i> counts by sample type in strata of extreme rainfall and temperature during antecedent periods timeframes _____	<b>Page 3</b>
<b>Table S4:</b> Intervention effects from improved on-site sanitation on log <sub>10</sub> -transformed <i>E. coli</i> counts by sample type in strata of above or below median rainfall and temperature during 2- and 7-day antecedent periods _____	<b>Page 4</b>
<b>Table S5:</b> Intervention effects from improved on-site sanitation on log <sub>10</sub> -transformed <i>E. coli</i> counts by sample type in strata of heavy rainfall and elevated temperature during 2- and 7-day antecedent periods _____	<b>Page 5</b>
<b>Figure S1:</b> Daily precipitation and monthly mean most probable number (MPN) of <i>E. coli</i> by sample type across the study period _____	<b>Page 6</b>
<b>Figure S2:</b> Daily temperature and monthly mean most probable number (MPN) of <i>E. coli</i> by sample type across the study period _____	<b>Page 7</b>
<b>Figure S3:</b> Forest plot of intervention effects from improved on-site sanitation on log <sub>10</sub> -transformed <i>E. coli</i> counts by sample type in strata of heavy rainfall and elevated temperature _____	<b>Page 8</b>

**Table S1.** Number of samples collected by sample type and study round

Round	Round 1	Round 2	Round 3	Round 4	Round 5	Round 6	Round 7	Round 8	Round 9	Total
Stored water	1013	641	592	571	599	581	582	574	587	5740
Food	1094	0	0	329	206	0	0	0	0	1629
Mother hands	0	720	705	684	682	668	662	643	633	5397
Child hands	1170	720	705	682	673	653	650	626	615	6494
Source water	1098	0	0	0	0	0	0	0	0	1098
Soil	1185	0	0	402	341	0	0	0	0	1928
Ponds	557	0	0	0	0	0	0	0	0	557
Flies	395	0	0	0	0	0	0	0	0	395
<b>Total</b>	6512	2081	2002	2668	2501	1902	1894	1843	1835	23238

**Table S2.** Percentages of samples (total n=23,238) within each weather category <sup>a</sup> across 2- and 7-day antecedent periods.

	2 Days	7 Days
No extreme rain	88.0% (20459)	77.0% (17896)
Extreme rain	12.0% (2779)	23.0% (5342)
No extreme temp	85.9% (19956)	79.5% (18473)
Extreme temp	14.1% (3282)	20.5% (4765)
No heavy rain	78.6% (18274)	64.8% (15062)
Heavy rain	21.4% (4964)	35.2% (8176)
No elevated temp	69.3% (16110)	63% (14641)
Elevated temp	30.7% (7128)	37% (8597)
Below median rain	49.3% (11446)	49.0% (11379)
Above median rain	50.7% (11792)	51.0% (11859)
Below median temp	52.5% (12193)	51.1% (11867)
Above median temp	47.5% (11045)	48.9% (11371)

<sup>a</sup> Extreme rain defined as  $\geq 28.20$  mm, extreme temperature defined as  $\geq 30.21$  °C, heavy defined as rain  $\geq 16.44$  mm, elevated temperature defined as  $\geq 29.29$  °C, median 2-day rolling average rain defined as  $\geq 0.27$  mm, median 2-day rolling average temperature defined as  $\geq 27.46$  °C, median 7-day rolling average rain defined as  $\geq 1.10$  mm, and median 7-day rolling average temperature defined as  $\geq 27.52$  °C.

**Table S3.** Improved on-site sanitation intervention effects <sup>a</sup> on log<sub>10</sub>-transformed *E. coli* counts by sample type in strata of extreme rainfall and temperature <sup>b</sup> during 2- and 7-day antecedent periods

	Rainfall							Temperature						
	No Extreme Rainfall			Extreme Rainfall				No Extreme Temperature			Extreme Temperature			
	Control n	Sanitation n	Δlog <sub>10</sub> (95% CI)	Control n	Sanitation n	Δlog <sub>10</sub> (95% CI)	Interaction P-value	Control n	Sanitation n	Δlog <sub>10</sub> (95% CI)	Control n	Sanitation n	Δlog <sub>10</sub> (95% CI)	Interaction P-value
<b>2 Day</b>														
Stored Water	2496	2581	<b>-0.08 (-0.15, -0.01)</b>	318	345	-0.05 (-0.19, 0.09)	0.68	2403	2468	-0.07 (-0.14, 0.00)	411	458	-0.12 (-0.29, 0.05)	0.53
Food	706	690	0.04 (-0.12, 0.19)	116	117	0.18 (-0.21, 0.56)	0.48	722	714	-0.12 (-0.04, 0.27)	100	93	-0.27 (-0.61, 0.08)	<b>0.05</b>
Mother Hands	2321	2386	-0.02 (-0.10, 0.05)	335	355	-0.05 (-0.21, 0.12)	0.75	2185	2224	-0.01 (-0.08, 0.07)	471	517	-0.10 (-0.23, 0.03)	<b>0.18</b>
Child Hands	2829	2899	<b>-0.06 (-0.13, 0.00)</b>	376	390	-0.06 (-0.20, 0.07)	0.99	2737	2770	-0.04 (-0.10, 0.03)	468	519	<b>-0.22 (-0.36, -0.09)</b>	<b>0.01</b>
Soil	834	810	-0.06 (-0.18, 0.06)	138	146	-0.04 (-0.31, 0.24)	0.86	853	847	-0.01 (-0.13, 0.10)	119	109	<b>-0.40 (-0.70, -0.15)</b>	<b>0.01</b>
Source Water	523	492	-0.04 (-0.12, 0.04)	40	43	-0.18 (-0.49, 0.13)	0.40	561	529	-0.05 (-0.13, 0.03)	2	6	-	-
Ponds	267	261	-0.07 (-0.21, 0.07)	10	19	-0.40 (-0.94, 0.13)	0.25	276	279	-	1	1	-	-
Flies	173	191	-0.13 (-0.44, 0.18)	20	11	-0.90 (-2.30, 0.50)	0.29	192	196	-0.20 (-0.53, 0.13)	1	6	-	-
<b>7 Day</b>														
Stored Water	2177	2307	<b>-0.08 (-0.16, -0.01)</b>	637	619	-0.03 (-0.15, 0.09)	0.41	2215	2274	<b>-0.08 (-0.16, -0.01)</b>	599	652	-0.05 (-0.18, 0.07)	0.68
Food	566	576	0.08 (-0.10, 0.25)	256	231	0.09 (-0.23, 0.41)	0.93	673	661	0.12 (-0.04, 0.27)	149	146	-0.16 (-0.49, 0.16)	<b>0.12</b>
Mother Hands	2057	2142	-0.02 (-0.09, 0.06)	599	599	-0.05 (-0.17, 0.07)	0.55	1969	2002	-0.01 (-0.09, 0.08)	687	739	-0.05 (-0.17, 0.06)	0.50
Child Hands	2463	2590	<b>-0.07 (-0.14, -0.01)</b>	742	699	-0.02 (-0.12, 0.08)	0.27	2523	2550	-0.03 (-0.10, 0.04)	682	739	<b>-0.19 (-0.31, -0.07)</b>	<b>0.01</b>
Soil	683	692	-0.05 (-0.19, 0.09)	289	264	-0.08 (-0.25, 0.10)	0.82	787	786	0.00 (-0.12, 0.11)	185	170	<b>-0.33 (-0.54, -0.12)</b>	<b>0.01</b>
Source Water	428	430	-0.04 (-0.13, 0.05)	135	105	-0.07 (-0.25, 0.11)	0.76	561	529	-0.05 (-0.13, 0.03)	2	6	-	-
Ponds	248	239	0.06 (-0.21, 0.10)	29	41	-0.26 (-0.70, 0.18)	0.39	276	279	-	1	1	-	-
Flies	136	162	0.01 (-0.32, 0.33)	57	40	<b>-0.91 (-1.65, -0.17)</b>	<b>0.03</b>	192	196	-0.20 (-0.53, 0.13)	1	6	-	-

<sup>a</sup> Bolded values indicate p-value ≤ 0.05 for effect estimates and interaction p-value ≤ 0.2.

<sup>b</sup> Extreme rainfall defined as ≥ 28.20 mm, extreme temperature defined as ≥ 30.21 °C. We could not estimate intervention effects on source water (tubewells), ponds and flies following periods of extreme temperature due to data sparsity.

**Table S4.** Improved on-site sanitation intervention effects <sup>a</sup> on log10-transformed *E. coli* by sample type in strata of above or below median rolling average rainfall and temperature <sup>b</sup> during 2- and 7-day antecedent periods

	Rainfall							Temperature						
	Below Median Rainfall			Median and Above Rainfall				Below Median Temperature			Median and Above Temperature			
	Control n	Sanitation n	Δlog10 (95% CI)	Control n	Sanitation n	Δlog10 (95% CI)	Interaction P-value	Control n	Sanitation n	Δlog10 (95% CI)	Control n	Sanitation n	Δlog10 (95% CI)	Interaction P-value
<b>2 Day</b>														
Stored Water	1408	1422	-0.06 (-0.14, 0.03)	1406	1504	<b>-0.09 (-0.17, -0.01)</b>	0.52	1507	1490	-0.08 (-0.16, 0.01)	1307	1436	<b>-0.09 (-0.17, 0.00)</b>	0.85
Food	398	392	0.18 (-0.02, 0.38)	424	415	0.04 (-0.17, 0.24)	0.27	444	428	0.06 (-0.11, 0.22)	378	379	0.03 (-0.22, 0.27)	0.83
Mother Hands	1325	1368	0.02 (-0.07, 0.11)	1331	1373	-0.06 (-0.15, 0.02)	<b>0.12</b>	1410	1424	0.02 (-0.08, 0.12)	1246	1317	-0.06 (-0.14, 0.02)	<b>0.17</b>
Child Hands	1601	1616	-0.02 (-0.09, 0.05)	1604	1673	<b>-0.11 (-0.19, -0.02)</b>	<b>0.08</b>	1710	1693	-0.02 (-0.10, 0.05)	1495	1596	<b>-0.11 (-0.20, -0.03)</b>	<b>0.05</b>
Soil	482	458	-0.07 (-0.26, 0.12)	490	498	-0.04 (-0.18, 0.10)	0.83	523	494	0.00 (-0.15, 0.14)	449	462	-0.13 (-0.30, 0.03)	0.26
Source Water	277	241	-0.02 (-0.13, 0.09)	286	294	-0.10 (-0.22, 0.02)	0.35	311	265	-0.04 (-0.13, 0.04)	252	270	-0.10 (-0.35, 0.15)	0.71
Ponds	130	125	-0.02 (-0.18, 0.14)	147	155	-0.20 (-0.44, 0.03)	0.24	145	139	-0.09 (-0.22, 0.05)	132	141	0.03 (-0.53, 0.58)	0.70
Flies	108	95	0.01 (-0.40, 0.42)	85	107	-0.41 (-0.89, 0.06)	<b>0.19</b>	108	102	-0.22 (-0.61, 0.17)	85	100	-0.13 (-0.68, 0.43)	0.80
<b>7 Day</b>														
Stored Water	1402	1414	-0.07 (-0.15, 0.02)	1412	1512	<b>-0.09 (-0.17, -0.01)</b>	0.67	1461	1463	-0.07 (-0.15, 0.02)	1353	1463	<b>-0.08 (-0.17, 0.00)</b>	0.78
Food	392	387	0.11 (-0.10, 0.32)	430	420	0.00 (-0.20, 0.20)	0.42	416	428	0.12 (-0.06, 0.30)	406	379	0.02 (-0.20, 0.24)	0.49
Mother Hands	1313	1370	0.02 (-0.07, 0.11)	1343	1371	-0.06 (-0.15, 0.02)	<b>0.11</b>	1363	1399	0.00 (-0.09, 0.10)	1293	1342	-0.05 (-0.13, 0.04)	0.37
Child Hands	1589	1613	-0.03 (-0.10, 0.04)	1616	1676	<b>-0.10 (-0.17, -0.02)</b>	<b>0.11</b>	1648	1665	-0.04 (-0.12, 0.03)	1557	1624	<b>-0.09 (-0.17, 0.00)</b>	0.37
Soil	473	455	-0.05 (-0.25, 0.15)	499	501	-0.08 (-0.21, 0.06)	0.82	499	493	0.03 (-0.12, 0.18)	473	463	<b>-0.17 (-0.31, -0.03)</b>	<b>0.05</b>
Source Water	278	244	-0.02 (-0.13, 0.09)	285	291	-0.10 (-0.21, 0.02)	0.36	294	262	-0.05 (-0.13, 0.04)	269	273	-0.08 (-0.32, 0.16)	0.80
Ponds	131	118	0.00 (-0.18, 0.17)	146	162	<b>-0.25 (-0.48, -0.03)</b>	<b>0.10</b>	136	138	-0.06 (-0.20, 0.07)	141	142	-0.32 (-0.78, 0.14)	0.30
Flies	96	104	0.03 (-0.39, 0.45)	97	98	-0.45 (-0.94, 0.04)	<b>0.15</b>	102	100	-0.27 (-0.67, 0.13)	91	102	0.05 (-0.53, 0.63)	0.40

<sup>a</sup> Bolded values indicate p-value ≤ 0.05 for effect estimates and interaction p-value ≤ 0.2.

<sup>b</sup> Median 2-day rolling average rain defined as ≥ 0.27 mm, median 2-day rolling temperature defined as ≥ 27.46°C, median 7-day rolling average rain defined as ≥ 1.10 mm and median 7-day rolling average temperature defined as ≥ 27.52°C.

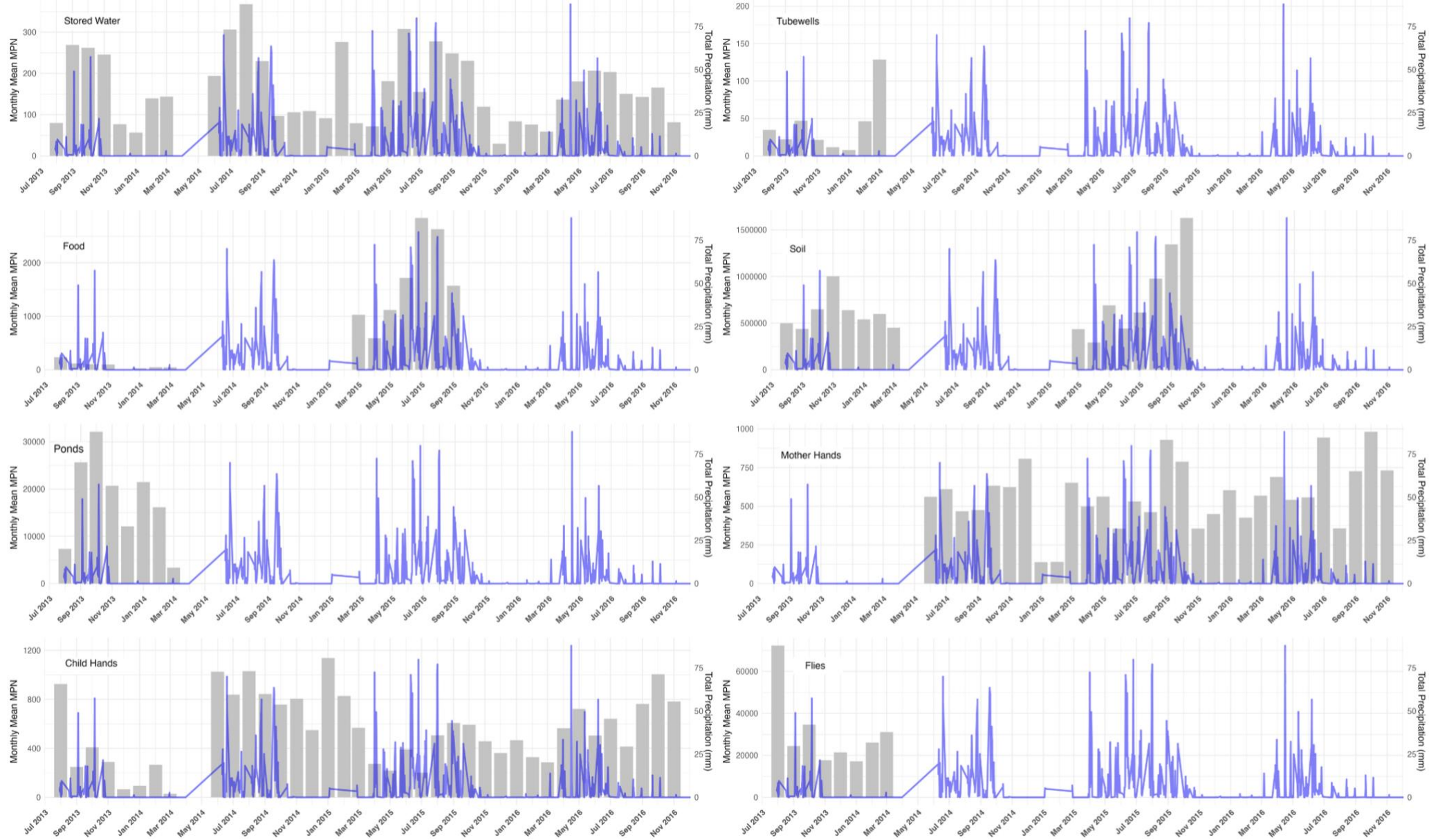
**Table S5.** Improved on-site sanitation intervention effects <sup>a</sup> on log10-transformed *E. coli* counts by sample type in strata of heavy rainfall and elevated temperature <sup>b</sup> during 2- and 7-day antecedent periods.

	Rainfall							Temperature						
	No Heavy Rainfall			Heavy Rainfall				No Elevated Temperature			Elevated Temperature			
	Control n	Sanitation n	Δlog10 (95% CI)	Control n	Sanitation n	Δlog10 (95% CI)	Interaction P-value	Control n	Sanitation n	Δlog10 (95% CI)	Control n	Sanitation n	Δlog10 (95% CI)	Interaction P-value
<b>2 Day</b>														
Stored Water	2214	2345	<b>-0.08 (-0.15, -0.01)</b>	600	581	-0.04 (-0.15, 0.07)	0.53	2027	2114	-0.05 (-0.13, 0.02)	787	812	<b>-0.13 (-0.26, -0.01)</b>	0.27
Food	598	604	0.03 (-0.14, 0.20)	224	203	0.21 (-0.08, 0.50)	0.28	625	616	0.16 (-0.01, 0.32)	197	191	-0.22 (-0.50, 0.06)	<b>0.02</b>
Mother Hands	2062	2143	-0.02 (-0.10, 0.05)	594	598	-0.02 (-0.14, 0.10)	0.95	1777	1838	-0.01 (-0.10, 0.07)	879	903	-0.05 (-0.14, 0.04)	0.50
Child Hands	2518	2623	-0.06 (-0.13, 0.00)	687	666	-0.07 (-0.18, 0.04)	0.94	2317	2375	-0.04 (-0.11, 0.03)	888	914	<b>-0.13 (-0.24, -0.02)</b>	<b>0.14</b>
Soil	704	717	-0.07 (-0.20, 0.06)	268	239	-0.04 (-0.25, 0.16)	0.83	729	733	0.00 (-0.12, 0.12)	243	223	<b>-0.26 (-0.45, -0.06)</b>	<b>0.03</b>
Source Water	467	463	-0.04 (-0.12, 0.04)	96	72	-0.10 (-0.35, 0.15)	0.64	0	41	-0.05 (-0.13, 0.04)	545	512	-0.23 (-0.69, 0.23)	0.44
Ponds	233	246	-0.04 (-0.19, 0.11)	44	34	-0.13 (-0.32, 0.05)	0.45	270	275	-0.08 (-0.22, 0.05)	7	5	<b>-0.38 (-0.59, -0.17)</b>	<b>0.01</b>
Flies	154	183	-0.11 (-0.44, 0.22)	39	19	-0.71 (-1.56, 0.13)	<b>0.20</b>	187	186	-0.22 (-0.56, 0.12)	6	16	0.20 (-0.63, 1.03)	0.37
<b>7 Day</b>														
Stored Water	1830	1967	<b>-0.08 (-0.16, 0.00)</b>	984	959	-0.05 (-0.14, 0.04)	0.58	1714	1777	-0.07 (-0.15, 0.01)	1100	1149	-0.09 (-0.18, 0.01)	0.79
Food	450	463	0.09 (-0.10, 0.28)	372	344	0.08 (-0.15, 0.32)	0.99	547	546	0.16 (-0.01, 0.32)	275	261	-0.09 (-0.36, 0.18)	<b>0.11</b>
Mother Hands	1735	1809	-0.01 (-0.09, 0.07)	921	932	-0.05 (-0.14, 0.04)	0.44	1442	1478	-0.01 (-0.10, 0.08)	1214	1263	-0.04 (-0.12, 0.05)	0.60
Child Hands	2084	2199	-0.06 (-0.12, 0.01)	1121	1090	-0.08 (-0.17, 0.01)	0.62	1958	1997	-0.05 (-0.12, 0.02)	1247	1292	<b>-0.08 (-0.17, 0.01)</b>	0.56
Soil	544	560	-0.04 (-0.20, 0.11)	428	396	-0.08 (-0.23, 0.08)	0.76	632	640	0.00 (-0.13, 0.14)	340	316	<b>-0.18 (-0.33, -0.03)</b>	<b>0.06</b>
Source Water	369	377	-0.02 (-0.12, 0.07)	194	158	-0.10 (-0.26, 0.06)	0.42	521	493	-0.05 (-0.14, 0.03)	42	42	-0.06 (-0.42, 0.31)	0.98
Ponds	214	203	-0.03 (-0.20, 0.13)	63	77	-0.22 (-0.47, 0.03)	0.24	261	273	-0.08 (-0.22, 0.05)	16	7	<b>-0.31 (-0.50, -0.13)</b>	<b>0.04</b>
Flies	115	143	0.01 (-0.35, 0.37)	78	59	<b>-0.62 (-1.19, -0.05)</b>	<b>0.07</b>	179	183	-0.22 (-0.57, 0.13)	14	19	-0.04 (-0.75, 0.66)	0.67

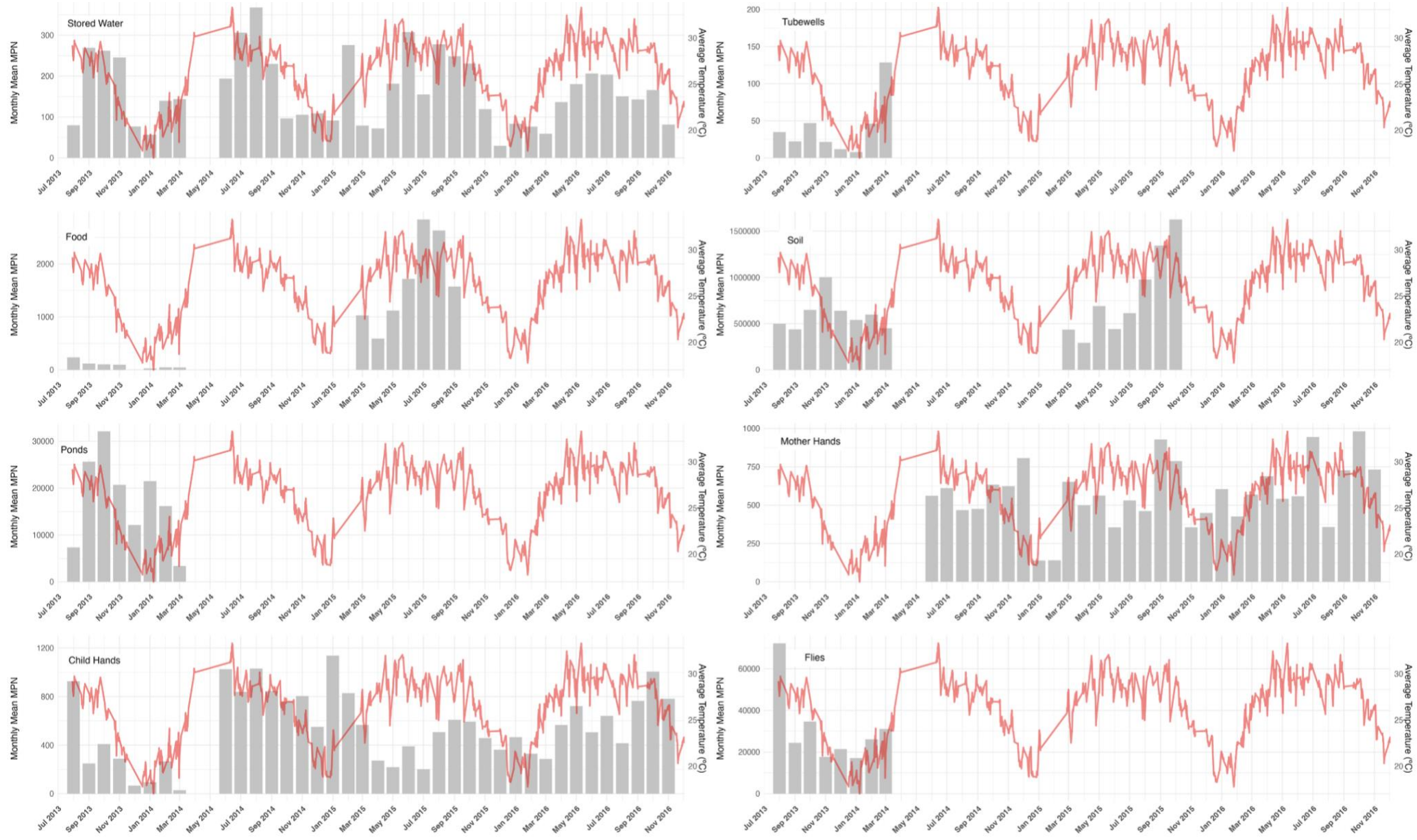
<sup>a</sup> Bolded values indicate p-value ≤ 0.05 for effect estimates and interaction p-value ≤ 0.2.

<sup>b</sup> Heavy rainfall defined as ≥ 28.20 mm and elevated temperature defined as ≥ 29.29°C

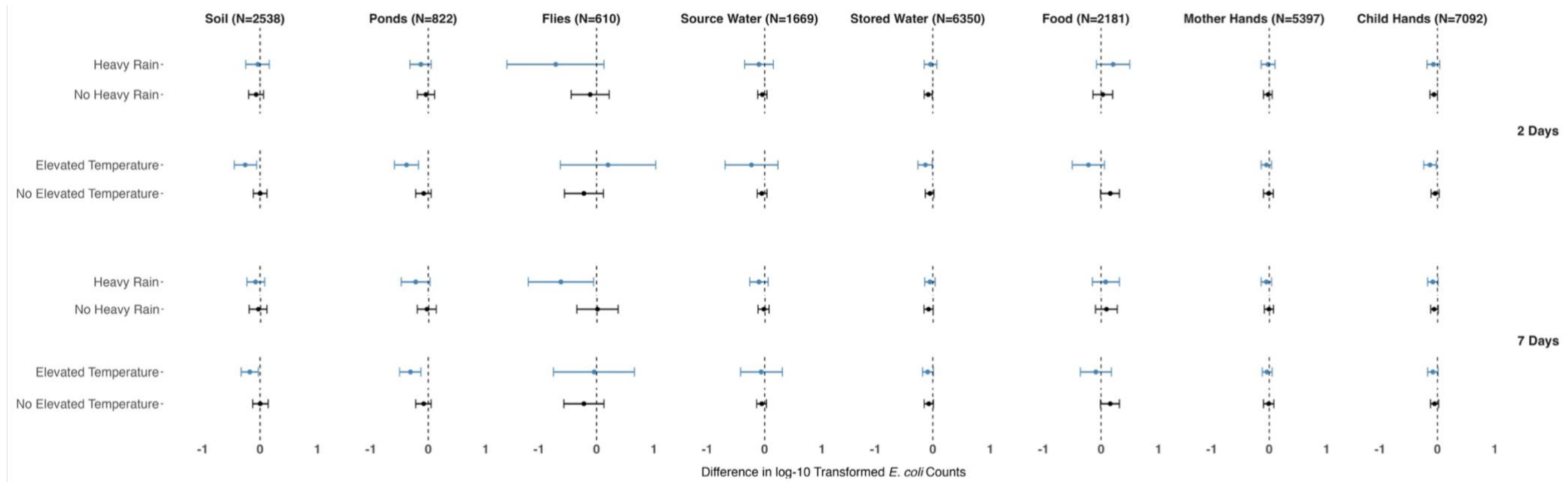
**Figure S1:** Daily precipitation and monthly mean most probable number (MPN) of *E. coli* by sample type across the study period



**Figure S2:** Daily temperature and monthly mean most probable number (MPN) of *E. coli* by sample type across the study period



**Figure S3.** Forest plot of intervention effects from improved on-site sanitation on log<sub>10</sub>-transformed *E. coli* counts by sample type in strata of heavy rainfall and elevated temperature<sup>a</sup>



<sup>a</sup> Heavy rainfall defined as  $\geq 16.44$  mm and elevated temperature defined as  $\geq 29.29^\circ\text{C}$ .