

SUPPLEMENTARY METHODS

General semantic and background neuropsychology tasks

Modified camel and cactus test

The camel and cactus test (CCT) is a 64-item task and assesses the ability to detect semantic associations (for example, matching ‘owl’ with ‘bat’ because they are both nocturnal animals), and forms part of the Cambridge Semantic Memory Test Battery.^{1,2} This study used the recently developed modified-CCT, which comprises 32 items and uses photographs as items as opposed to a combination of photographs and line drawings.³ For each item, participants are shown a photo at the top of a screen, and four photos underneath, and are instructed to point to the photo goes best with the photo at the top.

Cambridge Naming task

The Cambridge Naming task is part of the Cambridge Semantic Memory Test Battery.¹ Participants are shown a line drawing,⁴ and asked to name them. Half of the items are living (animals and fruit), and half are non-living (household items, tools and vehicles). The original version has 64-items, but a shortened 32-item version was used in the current study to minimise testing burden.⁵

Synonym judgement task

Participants are shown a word at the top of the screen, and required to point to one of three words below which goes best with the word at the top meaning (e.g., matching ‘river with ‘stream’ and not with ‘doctor’).⁶ The task includes both concrete and abstract words. The original version has 96-items,⁶ however this study used the reduced 48-item version.⁵

Boston Naming Test

The Boston Naming Test is more difficult than the Cambridge Naming task, and thus was included as an additional naming task designed to be more sensitive to milder anomia.⁷

Participants are shown line-drawings, rank ordered by difficulty and asked to name them. A reduced 30-item version was used to reduce testing burden.⁸

Brixton Spatial Anticipation Test

The Brixton Spatial Anticipation Test is a neuropsychological test of executive function.⁹ The test assesses the ability to detect and follow a visuospatial rule. Participants are shown a page displaying ten circles where one is coloured blue. The location of the blue circle changes on each page, and participants must pick up on the pattern and indicate the predicted location of the blue circle on the next page. The pattern changes without warning, and participants are required to detect and learn the new pattern. The total number of errors (maximum = 55) is summed, and a scaled score derived ranging from 1-10 (1 = impaired, 2 = abnormal, 3 = poor, 4 = low average, 5 = moderate average, 6 = average, 7 = high average, 8 = good, 9 = superior, 10 = very superior).

Raven's Progressive Matrices

The Raven's progressive matrices is a common measure of executive function and assesses non-verbal reasoning.¹⁰ The Coloured Progressive Matrices Set B was used in the current study, developed for mentally impaired individuals. Participants are shown a 2x2 matrix pattern of shapes, with one shape missing, and must identify the shape that completes the pattern out of six possible response options.

UK-English version of the Social Norms Questionnaire

Instructions: Following is a list of behaviours that a person might engage in. Please decide whether or not it would be socially acceptable and appropriate to do these things in the mainstream culture of the UK and answer yes or no to each. Think about these questions as if they were occurring in front of or with a stranger or acquaintance, NOT a close friend or family member.

Would it be socially acceptable to:

1. Tell a stranger you don't like their hairstyle?
2. Spit on the floor?
3. Blow your nose in public?
4. Ask a coworker their age?
5. Cry during a film at the cinema?
6. Push in a queue if you are in a hurry?
7. Laugh when you yourself trip up and fall?
8. Eat pasta with your fingers?
9. Tell a coworker your age?
10. Tell someone your opinion of a film they haven't seen?
11. Laugh when someone else trips and falls?
12. Wear the same shirt everyday?
13. Keep money you found on the pavement?
14. Pick your nose in public?
15. Tell a coworker you think they are overweight?

16. Eat ribs with your fingers?
17. Tell a stranger you like their hairstyle?
18. Wear the same shirt twice in two weeks?
19. Tell someone the ending of a film they haven't seen?
20. Hug a stranger without asking first?
21. Talk out loud during a film at the cinema?
22. Tell a coworker you think they have lost weight?

SUPPLEMENTARY TABLES

Supplementary Table I Voxel-based morphometry results

Hemisphere	Number of voxels	Peak MNI co-ordinate			Peak MNI co-ordinate	t-value
		x	y	z		
<i>FTD < Controls</i>						
Bilateral	263,655	-27	9	-21	Temporal pole	13.79
Right	3,352	29	-71	-50	Cerebellum	5.06
Left	1,570	-47	-74	-50	Cerebellum	4.02
<i>bvFTD < Controls</i>						
Bilateral	147,625	2	36	-15	Gyrus rectus	8.94
<i>SD < Controls</i>						
Bilateral	227,548	-30	-5	-42	Inferior temporal gyrus	21.82
Right	3,582	29	-69	-48	Cerebellum	4.80
<i>Left TLE < Controls</i>						
Left	48,006	-29	-20	-17	Hippocampus	24.63
<i>Right TLE < Controls</i>						
Right	51,989	26	-14	-20	Hippocampus	29.26
<i>SD < bvFTD</i>						
Left	10,071	-18	6	-39	Temporal pole	6.35
Right	2,607	15	-6	-38	Undefined	5.53

bvFTD = behavioural-variant frontotemporal dementia, FTD = frontotemporal dementia, MNI = Montreal Neurological Institute, TLE = temporal lobe epilepsy, SD = semantic dementia

Supplementary Table 2 Percentage of FTD participants given chance-level score on each task

Test	bvFTD	SD
ACE-R Total	0	0
MMSE	0	0
ACE-R Attention	0	0
ACE-R Memory	0	0
ACE-R Fluency	0	0
ACE-R Language	0	0
ACE-R Visuospatial	0	0
Cambridge Naming	0	0
Boston Naming	0	0
Camel and cactus test	11.5	13.6
Synonym judgement	15.4	18.2
Brixton	15.4	9.1
Raven's	7.7	9.1
Face-name matching	11.5	13.6
Face-profession matching	15.4	18.2
Landmark-name matching	11.5	13.6
Famous Face matching	15.4	13.6
Unfamiliar face matching	15.4	13.6
Abstract social synonym judgement	15.4	13.6
Abstract non-social synonym judgement	15.4	13.6
Social word-picture matching	7.7	4.5
Non-social word-picture matching	7.7	4.5
Basic emotion matching	15.4	9.1
Complex emotion matching	15.4	9.1
Social Norms Questionnaire	7.7	18.2
TASIT-Sarcasm	15.4	18.2

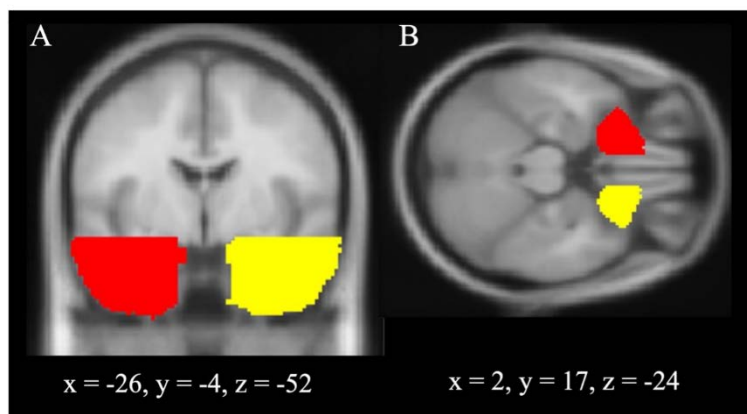
ACE-R = Addenbrookes Cognitive Examination-Revised, bvFTD = behavioural-variant frontotemporal dementia, MMSE = Mini Mental State Examination, SD = semantic dementia, TASIT = The Awareness of Social Inference Test

Supplementary Table 3 Regions of grey matter intensity associated with factor scores

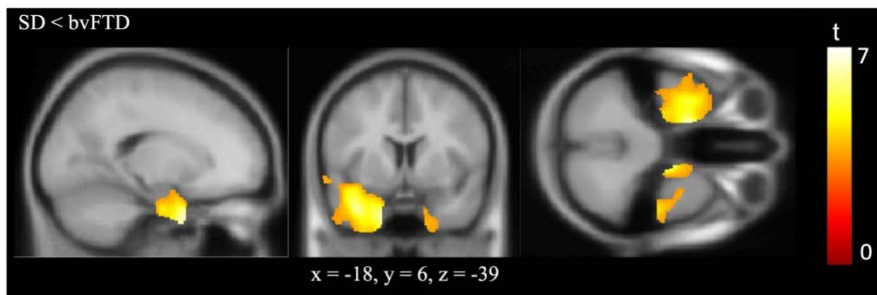
	Hemisphere	Number of voxels	Peak MNI co-ordinate			Peak MNI co-ordinate region	t-value
			x	y	z		
<i>FTD Severity</i>							
	Left	33,707	-42	6	36	Precentral gyrus	6.37
	Right	3,488	30	26	54	Superior frontal gyrus	6.54
<i>Semantic memory</i>							
	Left	26,501	-44	5	-15	Temporal pole	6.77
	Right	19,843	45	26	-30	Temporal pole	6.68

FTD = frontotemporal dementia, MNI = Montreal Neurological Institute

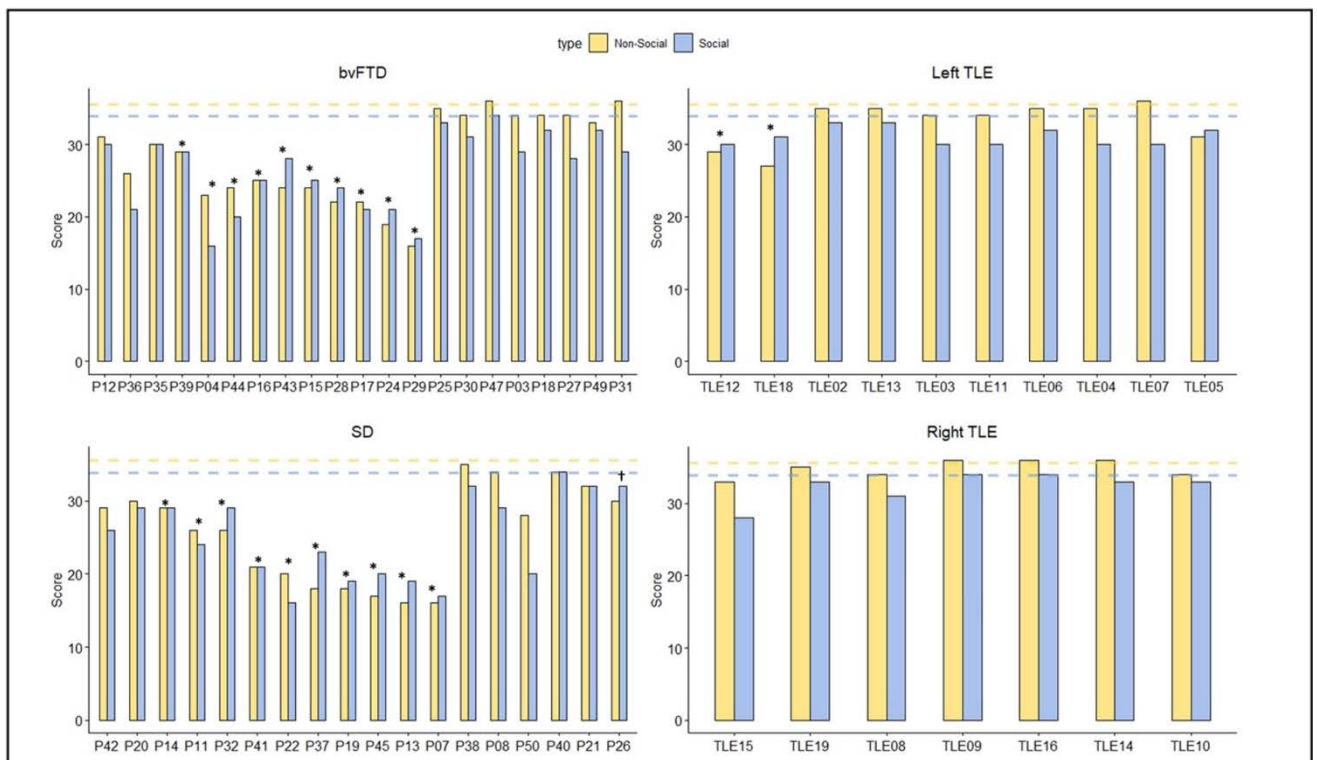
SUPPLEMENTARY FIGURES



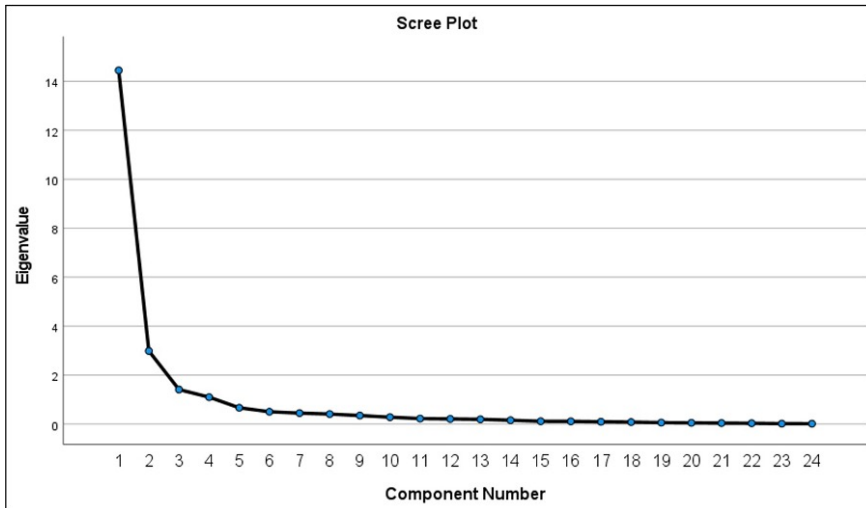
Supplementary Figure 1. Frontotemporal indices. Locations of the regions of interest used to calculate magnitude and asymmetry indices. **(A)** The left anterior temporal lobe ROI (shaded in red) and the right anterior temporal lobe ROI (shaded in yellow). **(B)** The left orbitofrontal cortex ROI (shaded in red) and the right orbitofrontal cortex ROI (shaded in yellow). Coordinates are reported in Montreal Neurological Institute space.



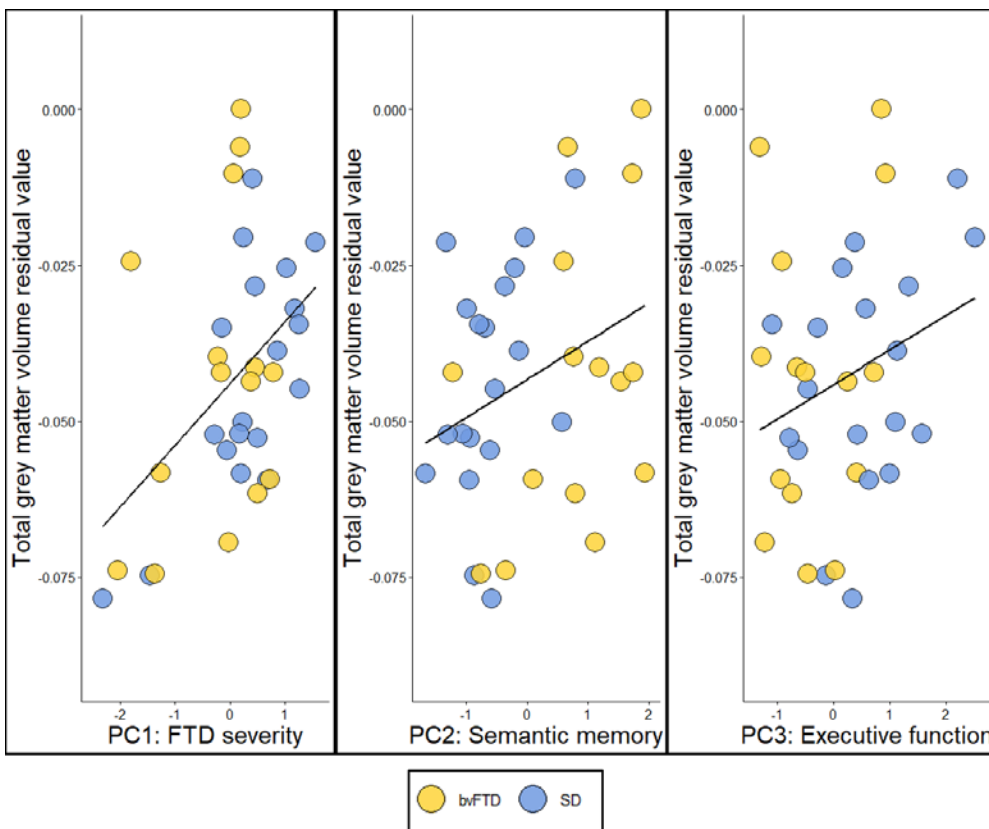
Supplementary Figure 2. Grey matter differences between FTD subtypes. Regions of reduced grey matter volume in SD compared to bvFTD. Groups were compared using independent t-tests, with age, intracranial volume and scanner site included as covariates. Images are thresholded using a cluster-level threshold of $Q < 0.05$ after an initial voxel-level threshold of $P < 0.001$. Significant clusters are overlaid on the MNI avg152 T1 template. Coordinates are reported in Montreal Neurological Institute space.



Supplementary Figure 3. Performance on the abstract social and abstract non-social synonym judgement tasks. Dashed horizontal lines indicate the control average on each task. *Strong dissociation †Classical dissociation



Supplementary Figure 4. Scree plot displaying eigenvalues for each principal component.



Supplementary Figure 5. Association between total grey matter volume and factor scores in FTD. Each data point represents the total grey matter volume index (residual values based on linear models fitted using the control data) plotted against (A) *FTD severity* factor scores, (B) *Semantic memory* factor scores and (C) *Executive function* factor scores.

References

1. Bozeat S, Lambon Ralph MA, Patterson K, Garrard P, Hodges JR. Non-verbal semantic impairment in semantic dementia. *Neuropsychologia*. 2000;38(9):1207-15.
2. Adlam AL, Patterson K, Bozeat S, Hodges JR. The Cambridge Semantic Memory Test Battery: detection of semantic deficits in semantic dementia and Alzheimer's disease. *Neurocase*. 2010;16(3):193-207.
3. Moore K, Convery R, Bocchetta M, et al. A modified Camel and Cactus Test detects presymptomatic semantic impairment in genetic frontotemporal dementia within the GENFI cohort. *Appl Neuropsychol Adult*. 2022;29(1):112-119.
4. Snodgrass JG, Vanderwart M. A standardized set of 260 pictures: norms for name agreement, image agreement, familiarity, and visual complexity. *J Exp Psychol Hum Learn*. 1980;6(2):174-215.
5. Halai AD, De Dios Perez B, Stefaniak JD, Lambon Ralph MA. Efficient and effective assessment of deficits and their neural bases in stroke aphasia. *Cortex*. 2022;155:333-346.
6. Jefferies E, Patterson K, Jones RW, Lambon Ralph MA. Comprehension of concrete and abstract words in semantic dementia. *Neuropsychology*. 2009;23(4):492-9.
7. Goodglass H, Kaplan E, Weintraub S. *Boston naming test*. Philadelphia: Lea & Febiger; 1983.
8. Mack WJ, Freed DM, Williams BW, Henderson VW. Boston Naming Test: shortened versions for use in Alzheimer's disease. *J Gerontol*. 1992;47(3):P154-8.
9. Burgess PW, Shallice T. *The hayling and brixton tests*. Thames Valley Test Company; 1997.
10. Raven JC. *Coloured Progressive Matrices, Sets A, A_B, B*. HK Lewis; 1962.