

1  
2  
3  
4  
5  
6  
7  
8  
9  
10  
11  
12  
13  
14  
15  
16  
17

**Main Title: Stakeholders Perspective of Integrating Female Genital Schistosomiasis into HIV Care: A Qualitative Study in Ghana**

**Short Title: Integration of Female Genital Schistosomiasis into HIV Care in Ghana**

Emmanuel Asampong<sup>1</sup>, Franklin N. Glozah<sup>1</sup>, Adanna Nwameme<sup>1</sup> Ruby Hornuvo<sup>1</sup>, Philip Teg-Nefaah Tabong<sup>1\*</sup>, Edward Mberu Kamau<sup>2</sup>

<sup>1</sup>Department of Social and Behavioural Sciences, School of Public Health, College of Health Sciences, University of Ghana, Legon

<sup>2</sup>UNICEF/UNDP/World Bank/WHO Special Programme for Research and Training in Tropical Diseases (TDR) at World Health Organisation, Geneva, Switzerland

\*Corresponding author: [ptabong@ug.edu.gh](mailto:ptabong@ug.edu.gh)

18 **Abstract**

19 **Background**

20 In Sub-Saharan Africa (SSA), HIV infection is the main factor contributing to adult premature death.  
21 The prevalence of HIV in the region could also be associated with recent increases in Female Genital  
22 Schistosomiasis (FGS) globally. The fast-rising prevalence of FGS in SSA nations including Ghana,  
23 which has led to the emergence of dual HIV-FGS conditions, provides evidence of the trend. As such  
24 the WHO is advocating for integrated services of HIV and FGS care. This study explored  
25 stakeholders' perspectives of the integration of prevention and control measures for Female Genital  
26 Schistosomiasis and HIV care in FGS endemic settings in Ghana.

27 **Methods**

28 The study was conducted in the Ga South Municipality in the Greater Accra region of Ghana. Using  
29 qualitative research methods, Focus Group Discussion was conducted with Community Health  
30 Officers (n=9) and Key Informant Interviews with stakeholders including health care professionals  
31 and providers at the Regional, District and community levels (n=13) to explore the feasibility,  
32 challenges, and opportunities of integrating FGS prevention and control package with HIV continuum  
33 of care in communities. In-depth interviews were also conducted among Persons with FGS and HIV  
34 (n=13), Female Households (n=10), Community Health Management Committee members and  
35 Community leader (n=7) to explore their views on the facilitators and barriers of the integration of  
36 FGS into HIV care into the Primary Health Care (PHC) in Ghana. All study participants were  
37 purposively sampled to achieve the study objective. All audio-recorded data were transcribed  
38 verbatim, a codebook developed, and the data was thematically analysed with the aid of NVivo  
39 software version 13.

40

41

42 **Results**

43 The study identified a knowledge gap regarding Female Genital Schistosomiasis (FGS) compared to  
44 HIV. The majority of Community Health Officers (CHOs) exhibited limited knowledge about FGS.  
45 Additionally, health workers misconstrued FGS as sexually transmitted infections. Community  
46 members who expressed knowledge of FGS were about gynecological symptoms of FGS. Three main  
47 health outlets; health facilities, herbal centers, and spiritual centers are utilized either concurrently or  
48 in sequence. This health seeking behaviour negatively affected the early detection and management of

49 FGS among HIV clients. Integration of HIV and FGS may be affected by the limited awareness and  
50 knowledge, resource constraints, stigma and discrimination, healthcare providers' attitudes and  
51 practices, and cultural beliefs.

## 52 **Conclusions**

53 The study finds that knowledge of FGS was usually low among both community members and  
54 Community Health Officers. This was having a detrimental effect on regular screening of females for  
55 genital schistosomiasis. Integration of FGS and HIV has the potential to help Ghana achieve HIV  
56 eradication; however, before such a program is launched, implementation barriers such as stigma,  
57 knowledge gap, unavailability of needed logistics at health facilities, shortage of FGS and HIV drugs  
58 and issues of accessibility of drugs must be addressed. The results also imply that forming alliances  
59 and working together with various community health care professionals may help with early HIV and  
60 FGS diagnosis and treatment. Finally, there is the pressing need to develop a clinical protocol for  
61 FGS and HIV integration and training of community health workers on how to apply the protocol.

62

63 Keywords: Stakeholders, Female Genital Schistosomiasis, Qualitative Research, Ghana, HIV,  
64 Integration

65

## 66 **Introduction**

67 Schistosomiasis, which is also known as “snail fever” or bilharzia [1], is a water-based debilitating  
68 Neglected Tropical Disease (NTD) of poverty, that affects an estimated 250 million people globally  
69 with 97% of all infections and 85% of the global at-risk population concentrated in sub-Saharan  
70 Africa [2]. In this region, almost 56 million girls and women are estimated to be affected by Female  
71 Genital Schistosomiasis (FGS) [3]. The disease, caused by trematode parasites of the genus  
72 *Schistosoma*, and three main species – *Schistosoma japonicum*, *S. mansoni* and *S. haematobium*  
73 commonly infect humans [4]. Human schistosomiasis is transmitted in areas where fresh water is  
74 contaminated with schistosome larvae. Two major forms of schistosomiasis are intestinal and  
75 urogenital. *Schistosoma haematobium* is the species most associated with urogenital schistosomiasis,  
76 whereas intestinal schistosomiasis may also be caused by five other species: *S. guineensis*, *S.*  
77 *intercalatum*, *S. japonicum*, *S. mansoni* and *S. mekongi*. Approximately two thirds of all cases of  
78 schistosomiasis are attributed to infection with *S. haematobium*. These eggs in the urinary and  
79 reproductive organs cause inflammation and lesions[1].

80

81 The World Health Organization (WHO) in 2020 published a roadmap to help progress the control and  
82 elimination of NTD by 2030 [5]. The WHO in their recommendation mentioned the elimination of  
83 schistosomiasis as a public health problem and ending the transmission of schistosomes in human  
84 hosts in selected countries by 2030 by considering the WASH strategy (providing safe water,  
85 sanitation, and hygiene), the control of snail populations, and the preventive chemotherapy.  
86 Preventive chemotherapy with praziquantel remains an effective approach for combatting the  
87 transmission of schistosomes in humans and must be administered annually in endemic settings [6].

88

89 Ghana carries one of the highest burdens of schistosomiasis in sub-Saharan Africa [7]. An estimated  
90 3.1 million people are at risk of schistosome infection in endemic areas in Ghana [8]. In Ghana,  
91 reports indicate an estimated country-wide prevalence of 23.3%, with localized prevalence levels of  
92 more than 50% with over 400 communities in 18 districts from eight regions living in the Volta Basin  
93 affected by schistosomiasis while over 3.1 million are at risk of infection in the endemic areas alone  
94 in the Volta [8]. The *Schistosoma haematobium*, which causes urinary (FGS) schistosomiasis, is the  
95 predominant human schistosome species in Ghana, and is widely distributed in the country. In  
96 communities where schistosomiasis is endemic, it is estimated that between 33-75% of women have

97 FGS yet few of these cases are diagnosed correctly [9]. Studies show that women with FGS may have  
98 a 3-4 times greater risk of contracting HIV [10,11]. In addition, epidemiological studies show that  
99 FGS is responsible for up to a three- to four-fold increase in horizontal transmission of HIV and  
100 AIDS [11–13], whereas a regression analysis of prevalence of *S. haematobium* infection and HIV in  
101 sub-Saharan African countries found that each *S. haematobium* infection per 100 individuals resulted  
102 in a 3% relative increase in HIV prevalence [14]. Given the high prevalence and incidence of FGS  
103 and its strong geographic overlap with HIV/AIDS in countries such as Ghana, and elsewhere, it  
104 stands to reason that FGS would be identified as a leading HIV/AIDS cofactor in Africa, and that  
105 mass drug administration (MDA) with the antiparasitic drug, praziquantel, would represent an  
106 important strategy for HIV/AIDS prevention.

107

108 Currently, services for HIV and FGS are provided separately thereby leading to service duplication.  
109 However, given the substantial resources deployed and health systems developed during the roll out  
110 of the global antiretroviral treatment (ART) [15], benefits from integrating HIV and FGS care would  
111 be two-fold. First, it would better address HIV and FGS prevention, management, and control;  
112 second, it would strengthen the health system and multisectoral approach, which is in line with  
113 Ghana's Neglected Tropical Disease (NTD) programme mandate to progressively reduce morbidity,  
114 disability and mortality using integrated and cost-effective approaches with the view to eliminate  
115 NTDs in Ghana. Overall, a community-based integration approach would improve access to basic  
116 diagnostics and essential medicine and referral systems, to ensure equitable care for FGS, and the risk  
117 of HIV. Therefore, to influence schistosomiasis control policy, through evidence-based studies, to  
118 direct efforts at women in reproductive age in Ghana, this study will seek to explore stakeholders'  
119 perspectives on the integration of prevention and control measures for FGS into HIV care, thereby  
120 contributing to the realization of the Sustainable Development Goals (SDGs), particularly good health  
121 and well-being (SDG3), gender equality (SDG5) and reducing inequality (SDG10).

122

## 123 **Material and Methods**

### 124 **Ethical Approval and Consideration**

125 The protocol for the study was reviewed and approved by the Ghana Health Service Ethics Review  
126 Committee (GHS -ERC: 001/01/24). All four research assistants who assisted in the data collection  
127 were trained in accordance with the study protocol prior to commencement of data collection.

128 Written informed consent was provided by all study participants prior to data collection. All study  
129 participants were assured of confidentiality and that the information provided will be reported with  
130 complete anonymity.

131

## 132 **Study Setting**

133 The study was conducted in the ten communities in the four sub-districts (Amanfro Sub Municipal,  
134 Bortianor Sub Municipal, Kokrobite Sub Municipal and Obum Sub Municipal) of the Ga South  
135 Municipality. The study communities include Manheam Nsuonanu, Kingstown, Amanfro, Tomefa,  
136 Brigade, Azumah Farms, Adakope, Machighani, Omankope and Gallilea Market.

137 The Ga South Municipality is one of the municipalities, located in the Southwestern part of the  
138 Greater Accra Region with its capital being Ngleshie Amanfro. The Municipality shares boundaries  
139 with Weija-Gbawe Municipality to the East, Upper West Akim to the North, Gomoa East to the  
140 South-West, Awutu-Senya East to the West, Awutu-Senya West to the North West and the Gulf of  
141 Guinea to the South [16]. According to the 2021 Population and Housing Census, the Ga South  
142 Municipality has a total population of 350,121, with 172,492 males and 177,629 Females [17].  
143 There are two main rivers within the Municipality, the *Densu* and *Ponpon* rivers. The larger of the  
144 two is the Densu which drains down from the Eastern region through the western portion of the  
145 Municipality where it enters the sea. These water bodies are the major source of water for people in  
146 this community. Most community members especially women use the rivers for bathing, washing of  
147 clothes and cooking. The Densu River serves as a major economic source for women who usually sell  
148 fresh fish from the Densu River [16].

149

150 The Ga South Municipality was chosen for this study due to the high prevalence rate of FGS among  
151 the population. FGS is endemic within the Ga South Municipality especially within communities  
152 along the river [18][19][20] and it is well known among community households who usually refer to  
153 it as “the water-borne disease”. (Figure 1).

154

155

156 Figure 1: Map Showing Study Area with Water Bodies

157 Source: Created with ArcGIS (basemap shapefile: Ghana Statistical Service:

158 <https://data.humdata.org/dataset/cod-ab-gha>)

159

## 160 **Study Design**

161 The study adopted phenomenology and narrative approach of qualitative research to explore  
162 stakeholders' perspective on integrating Female Genital Schistosomiasis care into HIV/AIDS care in  
163 Ghana. The study adapted the Anderson's Behavioral Health Model of Health Service Utilization  
164 (Healthcare Utilization Model). This framework has been proven to be a useful model for studying  
165 and understanding factors that influence the use of various types of health services [21]. The model  
166 consists of three main components: the predisposing factors, enabling factors, and need factors.  
167 Predisposing factors which are factors such knowledge about FGS and HIV and AIDS or attitudes  
168 towards health care providers and migration from one place to another can affect the use health  
169 services or influence an individual/community's willingness to utilize the health services. In this case,  
170 individual or community predisposing factors can affect the health system factors under the enabling  
171 factors in a way that, if individual attitudes towards tuberculosis contact tracing is negative, it will  
172 negatively affect the health system in a way that, the attitudes of the health care workers may be  
173 influence negatively, which might discourage them from conducting contact tracing. Predisposing  
174 factors can also directly influence integration.

175 Enabling factors such as resources availability, number of health care workers available, healthcare  
176 workers attitudes, practices/awareness can facilitate or enable one to access health care services. In  
177 this case, the enabling factors directly affect the predisposing and the health need factors. For  
178 example, if there are no resources for integration and other related essential services, someone may  
179 choose to migrate to areas where there are adequate resources. Or if there are inadequate resources for  
180 integration, then the health status or condition may also be affected

181 Need factors such as perception, health status and quality of life can determine an individual's  
182 perceived need for health care services. These factors directly influence integration. For example, if  
183 there is a presence of FGS signs, or there is a change in the quality of life of an individual due to  
184 condition, they may choose to utilize the health service. These constructs informed the design of the  
185 data collection tools.

186

187

## 188 **Study Population**

189 The study population consisted of household heads, community members, community leaders,  
190 community health workers, and patients within the four sub-districts of the Study district in the  
191 Greater Accra Region of Ghana.

## 192 ***Inclusion and Exclusion Criteria***

193 Any person 18 years and above, who has lived in the community for more than one year is eligible to  
194 take part in the study. Those who do not consent to participating were excluded from the study. In  
195 addition, participants who were very ill at the time of data collection were excluded from the study.

196

## 197 **Sample Size and Sampling Technique**

198 The sample size for this study conducted among key stakeholders was n=52. This included a Focus  
199 Group Discussion (FGD) with Community Health Officers (n=9), Key Informant Interviews (KIIs)  
200 with key stakeholders within the health sector of Ghana (n=13) and In-depth Interviews with key  
201 stakeholders (n=30) within the study communities which included Persons with FGS and HIV,  
202 Female Households, Community leaders and Community Health Management Committee members.  
203 The study participants were purposively sampled (stratified purposive) to achieve the objectives of  
204 this study considering their key role as stakeholders in provision and/use of care for FGS and  
205 HIV/AIDs at the individual, community and regional/national levels and within the health sector as  
206 well as their roles in the reduction of disease burden of FGS and HIV/AIDS in Ghana.

207

## 208 **Data Collection Tools and Strategy**

209 **Focus Group Discussions (FGDs):** To contextualize the integration of FGS and HIV care into HIV  
210 continuum of care in community and health facility settings, an FGD was conducted among  
211 Community Health Officers (n=9) from all the 10 communities in the Municipalities using an FGD  
212 guide to explore care provision for FGS and HIV, community involvement, and the barriers and  
213 enablers of integrating FGS and HIV into PHC.

214 **Key Informant Interviews (KIIs):** Using a KII guide, we conducted KIIs (n=13) with various  
215 stakeholders to explore the feasibility, challenges, and opportunities of integrating FGS prevention  
216 and control package with HIV continuum of care in communities. Also, challenges and barriers to the  
217 delivery of FGS prevention and control package with HIV. These include Health care professionals at  
218 national, regional, district and community levels, including CHPS.



219 **In-depth Interviews (IDI):** In-depth interviews were conducted using and an in-depth interview  
220 guide to collect data among females living with FGS (n=10), females living with HIV (n=3), female  
221 household heads (n=10), community health management committee (CHMC) members (n=6) and  
222 community leaders/opinion leaders. An IDI guide was used to explore their knowledge of HIV and  
223 FGS and care provision, as well as their views on integration and the facilitators and barriers of the  
224 integration of FGS into HIV care.

225  
226 All data collection guides were designed in English and then translated into Ga, Twi, and Ewe. The  
227 translations were done by language experts using a back-to-back strategy. With this strategy, a  
228 language expert proficient in English and any of the local languages first translated the interview  
229 guide from the English language to the local language. Another language expert then retranslated the  
230 guide from the local language back to English and the two versions compared and harmonized.  
231 Where there were disagreements, these were discussed by the two language experts with a third  
232 language expert as a mediator. This was to ensure uniformity in the data collection tools.  
233 Four graduate research assistants who are proficient in the local languages and skilled in collecting  
234 qualitative data were recruited and trained to assist in the data collection. The training was a  
235 combination of classroom work and mock interview exercises in both English and the local languages  
236 after which they were deployed to their linguistically competent areas to collect the data. The RAs  
237 were supervised by the investigators during fieldwork. The interview sessions for KIIs and IDIs lasted  
238 between 40 minutes to 1 hour, whereas FGD lasted for about two hours. Interviews were conducted in  
239 English, Ewe, Akan and Ga depending on the participants language proficiency. The study was  
240 conducted between January and April 2024.

241

242

### 243 **Data Processing and Analysis**

244 All audio-recorded data were transcribed verbatim. Data collected in local language was first  
245 translated into English by two independent people. The translations were then compared for  
246 consistency. Any inconsistency was discussed by the translators with a third person serving as a  
247 mediator. Qualitative narrative data in English was then entered into a word processor (Microsoft  
248 Word) and imported in a format that allows coding of the interview transcripts in QSR NVivo 13  
249 software for analysis, a computer programme for textual analysis of large qualitative data sets. A

250 codebook was developed, discussed, and accepted by the research team and used for coding the data.  
251 The data was analyzed by the research team. Thematic content analysis was adopted in this study.  
252 The study team first read the transcripts to understand the key themes from the data which was used  
253 to develop the codebook to guide the data coding. This codebook was discussed and accepted by the  
254 research team. Guided by this codebook, the data was then coded first as free nodes and later  
255 transformed into tree nodes. We classified the data based on the source of the data and linked these  
256 sources to their attributes such as region, sex of respondent, and place of interview and codes in  
257 NVivo.

258

## 259 **Results**

260 The results are presented under the following themes: knowledge about HIV and FGS, Care provision  
261 for HIV and FGS care, integrating care provision for FGS and HIV/AIDS and Perceived  
262 implementation facilitators/enablers.

263

### 264 **Socio-demographic Characteristics of Study Participants**

265 As shown in Table 1 below, a total of 52 respondents participated in this study. Majority of the study  
266 participants were females (80.8%) as compared to males (19.2%). Many of the study participants  
267 were within the ages of 30-39 years (34.6%) and 50-70 years (32.7%) and more than half (63.5%)  
268 were married. All key informants and Community Health Officers attained tertiary level education.

269

270

271

272

273

274

275

276

277

278

279

280

281 **Table 1: Socio-demographics of Study Participants**

282

283 **Knowledge About HIV and AIDS**

284 Majority of FGS patients and Community members have good knowledge of HIV/AIDs. Most of  
285 these participants expressed that, HIV is transmitted through blood with an infected person, and when  
286 a person encounters sharp objects used by infected persons. They also mentioned there is medication  
287 available that can manage the condition and prevent mother-to-child transmission among infected  
288 pregnant women. There was also a good knowledge about HIV/AIDs among all participants who  
289 were HIV patients.

290 *“The disease is a blood disease, if someone uses a sharp blade and he or she has the disease*  
291 *and you go take the same blade and mistakenly, you get cut by this sharp object you can*  
292 *contract the disease. This disease is also contracted through sex. When an individual has this*  
293 *disease HIV and is not known and he or she has sex with another without protection the other*  
294 *opponent can easily contract the disease” (IDI, R5, Female Household)*

295 *“HIV is transmitted through blood, and it will affect your weight, however there is medication*  
296 *for HIV and when you take it, you will live longer and it can also prevent mother-to-child*  
297 *transmission” (IDI, R1, FGS Patient, Female)*

298

299 Regarding participants’ source of knowledge about HIV and AIDS, majority of community members  
300 mentioned that they first heard about HIV and AIDS through the radio and television. Few added that  
301 they got to know about it at the hospitals, and at the community level through education by health  
302 workers and announcement on the Community Information Centre. However, among FGS and HIV  
303 patients, majority of them got to know about HIV at the hospital either through antenatal care or visit  
304 for healthcare. This was followed by radio and television as other sources of HIV and AIDsa  
305 information, and a few mentioned the church, community and school as places they got to know  
306 about HIV/AIDs.

307

308 *“I hear it from the television, from the radio stations, they talk about it on the radio stations.*  
309 *The community centers also announce and talk about diseases to us” (IDI, R2, Female*  
310 *Household)*

311 *“At the hospital. They educate us on HIV and AIDS at the hospital anytime we go to antenatal*  
312 *clinics. They tell us not to be scared and encourage us to check our HIV status. They*  
313 *encourage us that there are medications for managing the HIV condition and early detection*  
314 *is important to avoid mother to child infection transmission” (IDI, R1, FGS Patient, Female)*

315

316 In addition, participants expressed that, the information regarding HIV should be made available to  
317 the public through various medium. Majority indicated door-to-door/home visits, use of community  
318 information centers, durbars, making information available in different languages and broadcasted  
319 through radio and television so that everyone can understand as well as through churches. These are  
320 evident in some participants’ quotes below:

321

322 *“We can relay information about these diseases through information centres in various*  
323 *communities, holding durbars to talk about the disease to the people, through television and*  
324 *with different dialect because we can communicate to people but if we don’t not communicate*  
325 *with them with the language they understand, we will not get the right people to get it and*  
326 *follow the information and go by it please. We can also relay information through the church*  
327 *to also create awareness” (IDI, R6, CHMC, Male)*

328

329 *“If the information can be relayed through radios, televisions, at the marketplace, bus stations*  
330 *churches and beer bars to target the young who go there and schools such as the junior high*  
331 *schools and the university that could really help” (IDI, R3, HIV Patient, Female)*

332

333 Knowledge about HIV and AIDs among community members and FGS patients have helped them to  
334 protect themselves against the virus by avoiding unprotected sex, not having multiple sexual partners  
335 as well as not sharing sharp objects with other people. They also mentioned that their knowledge  
336 about HIV and AIDs has encouraged them to periodically check their HIV status.

337

338 *“It has helped to protect myself from getting HIV, for example when I'm in a relationship with*  
339 *you or you have a boyfriend or girlfriend, you don't have to have sex with the person without*  
340 *knowing their HIV status, you two have to go to the hospital and know each other's status*  
341 *before you start having sex. (IDI, R2, Female Household)*

342

343 Also, HIV patients expressed that, the knowledge they have received about HIV especially on the  
344 availability of medication and that, adhering to this medication will help them live healthier has given  
345 them some form of comfort. Also, the counsel they receive has helped them to take better care of  
346 themselves by eating well and avoiding unprotected sex, and educate others about the virus

347

348 *“It’s been very useful to me and I advise people I meet here, in Ghana, when you are living*  
349 *with HIV people stigmatize against you so I see these people here as a family... from the*  
350 *beginning, I was in a confused state but as time went on I encouraged myself that...when I*  
351 *went to see the doctor for consultation, he put me on medication so I asked him about the side*  
352 *effects of the medicine, things I'm supposed to eat and what not to eat, so he told me that I*  
353 *should stay off alcohol if I want to stay healthy and live long, I should also try as much as*  
354 *possible to avoid stress and I should exercise, and make sure I eat a balanced diet, and also I*  
355 *shouldn't take things that contain caffeine and acidic fruits and when I adhered to all these*  
356 *things, I realized it has been of help to me... The disease makes you weak but when I put on*  
357 *medication and adhering to all directives, I've realized that my strength is back to normal and*  
358 *I can do everything (IDI, R1, HIV Patient, Female)*

359

360 Participants also mentioned some preventive measures for HIV/AIDs. These include avoiding having  
361 multiple sexual partners, abstinence, if possible, use of condom, and avoid sharing sharp objects with  
362 other individuals regardless of your relationship with them.

363

364 *“We should take very good care of ourselves when it comes to our sex life. We must be very*  
365 *careful because you may not know if the person has the disease or not. I would advise that*  
366 *protection is used. In addition, we must avoid using sharp objects like blades even toothbrush*  
367 *with people and even with our family members because we may not know who really has the*  
368 *disease” (IDI, R5, CHMC, Female)*

369

370 *“We have to protect ourselves from having multiple sex partners and also protect ourselves*  
371 *with condoms and if we can abstain too, it will help a lot. We should avoid using sharing some*

372 *objects like blades, razor blades even with our relatives because we do not know who has the*  
373 *disease (IDI, R8, FGS Patient, Female)*

374

375

### 376 **Knowledge About Female Genital Schistosomiasis (FGS)**

377 The study further explored participants' knowledge about FGS. Findings revealed that, many FGS  
378 patients and community members knowledge about FGS were mainly about experienced symptoms  
379 such blood in urine, itchiness and pain around the vagina and, that the disease is contracted from the  
380 river which is used by community members. For instance, some participants mentioned that:

381 *“It is about the river. There are many sicknesses in the river. When we spent much time in the*  
382 *river... These are small germs in the river. Even when you drop a piece of wood in the river,*  
383 *after some time, you will realize small snail like creatures on the stick. We get it from the*  
384 *river. Anytime we spent time in the river, which is when we are infected...I have taken*  
385 *medications to treat this condition several times. The doctor told me that the germs passed*  
386 *through my genitals into my womb. Anytime I urinate, I see blood samples. It was confirmed*  
387 *after a lab test. They prescribed some medications for me...As a result, I stopped fetching*  
388 *water from the river” (IDI, R2, FGS Patient, Female)*

389

390 *“I know is a disease contracted through the water. In this community, we do not have pipe*  
391 *water or a borehole so all we use is the river water so we easily can contract it. I also know*  
392 *that when you are infested with disease, you can find blood in your urine, you will have itches*  
393 *with your body and have sores around your vagina as a woman. (IDI, R6, Female*  
394 *Household)*

395

396 It was however realized that all HIV patients who participated in the study do not have much  
397 knowledge about FGS. The following illustrate this point:

398

399 *“I've heard about it before, but I don't know anything about it” (IDI, R1, HIV Patient,*  
400 *Female)*

401 *“No, I don't know about it” (IDI, R2, HIV Patient, Female)*

402

403 *“I don’t really know about this disease, all I know is that you can contract it through water*  
404 *bodies please” (IDI, R3, HIV Patient, Female)*

405

406 Furthermore, the study revealed that, key informants have an in-depth knowledge about female  
407 genital schistosomiasis:

408

409 *“So, Schistosomiasis is a disease of the blood fluid. Usually, the organisms. Schistosomiasis*  
410 *affects the blood, the tracts, the GTI and the eggs. When the parasite attacks the human*  
411 *through the skin, it passes through the skin, and it enters the blood. And when it goes, it lays*  
412 *eggs. And the eggs are excreted through the urine and the feces of the human. So, once the*  
413 *eggs are laid and it comes to a bladder and urinates in the fresh water, it contaminates the*  
414 *water. Or passes through the water, but it contaminates the water. And we have water snails,*  
415 *small, small water snails, which also ingest the parasites. And the developmental process also*  
416 *goes in the waters, and they also release it into the water. Once you are walking or playing,*  
417 *swimming, or doing anything in the water, the parasite pierces your skin and enters your*  
418 *system” (KII, R2, Male).*

419

420 Community Health Officers (CHOs) however expressed that, they do not receive any specific training  
421 regarding FGS and that they are able to identify FGS based on the symptoms presented by the  
422 patients which they sometimes associate with bilharzia hence, they often refer such patients for  
423 laboratory test and further diagnosis.

424 *(Interviewer: Please, per our training, do we know how to identify a person with*  
425 *Schistosomiasis?): “All Respondents: NO” (FGD, CHOs)*

426

427 *“You see, with the FGS, we received some training from Unilever Company, I did join, and*  
428 *we also did some at our facility. As for us the CHOS the only problem is that when we suspect*  
429 *somebody for FGS per our investigation and findings, we normally refer them to the facility so*  
430 *that lab investigation can be carried on upon them...Sometimes with the FGS we associate it*  
431 *with bilharzia so normally for me; I do refer people to come to Amanfrom for lab*  
432 *investigation to rule out the specific disease whether it be FGS or an STI” (FGD, R2, CHOs)*

433



434 *“Is the same as my sister said we refer them, especially with female with blood in urine.*  
435 *Seeing clots in their blood gives me a preview and also a severe abdominal pain. So due to*  
436 *this, I ask them to go to the health facility” (FGD, R3, CHOs)*

437

438

439 The study further explored the sources of knowledge of FGS and the usefulness of this knowledge  
440 among study participants.

441 Many of the female community households mentioned that there learnt about FGS through education  
442 provided by some researchers from the University of Ghana while few of them mentioned they heard  
443 of FGS from community awareness creation by doctors and nurses from facilities within the  
444 communities while others also learnt of the disease due to experience of contracting FGS. These are  
445 expressed in some participants’ quotes below:

446

447 *“Certain doctors came from Legon Noguchi, to come and talk to come and educate, teach and*  
448 *took some blood samples from us, left then after came in a months’ time and brought us*  
449 *medications to treat the disease. That is the FGS. Sometimes too, they move from house to*  
450 *house” (IDI, R7, Female Household)*

451 *“I heard it from nurses and some health programs were organized in the community and we*  
452 *had some health professionals coming in to talk about this disease (FGS) with us” (IDI, R9,*  
453 *Female Household)*

454

455 About half the number of FGS study participants indicated they got to know about FGS after they  
456 experienced the symptoms and sought medical care while the remaining half said, they received  
457 education from health workers who came to educate the community about FGS. Below are some  
458 quotes shared by FGS participants:

459

460 *“It is a personal experience. As I told you earlier, these conditions commonly experienced by*  
461 *the community members because we depend on the river for everything” (IDI, R1, FGS*  
462 *Patient, Female)*

463 *“The nurses came here to tell us about it, they told us we can get sickness from the river, so*  
464 *we should avoid bathing and swimming in it” (IDI, R6, FGS Patient, Female)*



465 *“Some health professionals came around to talk about this disease to us and even supplied*  
466 *medications to those who have the disease or do not have it” (IDI, R8, FGS Patient, Female)*

467

468 Regarding the usefulness of the knowledge received, almost all community and FGS patients  
469 expressed that, the awareness they received on FGS has influenced them and their family to stop  
470 bathing and swimming in the river. Others also stopped drinking from the river and in situations  
471 where they will use the water from the river to cook or bath at home, they will either allow it to settle,  
472 add alum to the water to purify it or boil it to kill the living organisms:

473 *“I have stopped my children from swimming or bathing in the river, they can go the shore, but*  
474 *they should desist from swimming inside the river. sometimes when you fetch the water and*  
475 *bring it home, you see some living organisms inside, so you have to put in alum for it to settle*  
476 *or boil the water before we use it” (IDI, R3, Female Household)*

477 *“I had to prevent my young girls from playing in the water since they used to do that a lot.*  
478 *Further, I decided to boil water before usage. Now, in my household, we drink sachet of*  
479 *water that is the one they sell” (IDI, R8, Female Household)*

480 *“I don't allow my kids to take their bath at the river side anymore, they fetch it home and bath.*  
481 *When I fetch the water and bring it home, I boil or put in alum for it to settle and then I use it”*  
482 *(IDI, R5, FGS Patient, Female)*

483

484 The study further explored other sources from which participants will want to receive information  
485 related to FGS. Many of the participants expressed that information about FGS can be communicated  
486 through the radio, television, community information centers and churches. Others also mentioned  
487 information can be shared at hospitals through Child Welfare Clinics, marketplaces, lorry stations and  
488 during community durbars. Some community members and patients expressed that:

489

490 *“You see with this disease; I had no knowledge about it until these personnel’s came around*  
491 *to give us this information. So, I think if we also relay it through the FM stations, when we go*  
492 *to the clinics nearby, they talk more about it and make some advertisements. When durbars*  
493 *are held, health professionals can come around and enlighten us more about the disease and*  
494 *continue to caution us” (IDI, R5, Female Household)*

495 *“I think we have our child welfare clinic in the community, I think when the mothers go there,*  
496 *health workers can take advantage of that to communicate with the mothers about the FGS*  
497 *disease so that the mothers can take care of themselves and their children” (IDI, R5, CHMC,*  
498 *Female)*

499 *“I was able to talk to my friends about the disease. I think, when it goes on the radio, we go*  
500 *from house to house, also through screenings that are held during community durbars and*  
501 *also through our churches. Most people go to church, so I know when information is relayed*  
502 *through the church it will get to most of the community members to take care of their family*  
503 *and themselves as well” (IDI, R9, FGS Patient, Female)*

504 *“Information about this disease has to go viral. Can you believe this? I think if they pass on*  
505 *information through radios, television, holding screenings, talking about it during grand*  
506 *durbars, nurses coming to our communities to hold health programs to talk about this, in my*  
507 *opinion, it will be great. Doing all this, you can reach a lot of people and as I said, I don’t*  
508 *really know about this disease so as to my other community members wouldn’t know or other*  
509 *people wouldn’t really know about this for them to be cautious” (IDI, R3, HIV Patient,*  
510 *Female)*

511  
512 When it comes to preventive measures for FGS, many of the FGS patients mentioned treating the  
513 water by boiling or by adding alum, avoid bathing or staying longer in the river and said there is  
514 medication available to treat FGS. However, among community members, in addition to treating the  
515 water fetched from the river by boiling or adding alum as well as not bathing in the river and creating  
516 awareness, they indicated that, the best preventive measure for FGS is providing the community with  
517 pipe-borne water. These are expressed in some of the illustrative quotes:

518  
519 *“There is a medication to treat FGS. The moment it is administered...the medication kills all*  
520 *the causative agents in your system. There is medication for FGS. They distribute to us*  
521 *periodically” (IDI, R1, FGS Patient, Female)*

522 *“The only means for us is the provision of pipe borne water. This is because, no matter the*  
523 *frequent distribution of medications for FGS, the sickness will still be with us because we do*

524 *not have any other alternative than to depend on the same water causing the sickness. It all*  
525 *depends on the alternative water source” (IDI, Community Leader, Male)*

526 *“I know of boiling water before usage, not swimming in the water, you can use alum too. In*  
527 *all, I would say that the community should be provided with pipe water so that all of this will*  
528 *come to an end with the FGS. This is because, the disease is contracted through the water and*  
529 *the more we enter to fetch we will still contract the disease so building us a pipe for the*  
530 *community, will even stop us from entering the water and that prevention will be a permanent*  
531 *one for us” (IDI, R5, Female Household)*

532 *“Hmm! I know of heating up our water before, not bathing in the water, also taking in the*  
533 *medication that is brought up by the health workers to protect you from the disease. In all*  
534 *these, we do a lot of things with the water, and I think, water is a necessity and for us to really*  
535 *prevent this we will opt for pipe borne water in our community. This is because, we go in to*  
536 *fetch this water before we even come to boil it is used for washing and in all these activities*  
537 *you will always contract the disease so I will suggest the pipe borne water that will prevent us*  
538 *from entering the water, we won’t take medications anymore and everybody will live happily”*  
539 *(IDI, R7, Female Household)*

540

#### 541 **Care provision for HIV and AIDs**

542 Participants from the various categories mentioned that care provision for HIV is mainly sought from  
543 the hospital or health centers. Most community members expressed that, due to enlightenment and  
544 awareness creation about HIV and AIDs, most people seek care at health facilities though few others  
545 still visit traditional herbal places and churches. This is evident in some community members’ quotes:

546 *“To be honest with you, education on HIV and AIDS has enlightened many on the need to visit*  
547 *the hospital or health centre for HIV and AIDS care. To be honest, some also visit the herbal*  
548 *centres” (IDI, R1, CHMC, Male)*

549 *“Let me use my mother’s health issue as a case, when my mother was diagnosed with HIV,*  
550 *she thought that was the end of her life. Many people advised her to seek care from*  
551 *spiritualists and herbalists. Many people roam seeking care. However, I think hospitals are*  
552 *the best place to seek care. We advise our mother to seek care from the hospital. She refused”*

553 **(IDI, R2, CHMC, Male)**

554 *“Others also seek care from herbal practitioners. But majority seek care from the hospital for*  
555 *them to determine the viral load and how the condition can be managed. There are*  
556 *medications to manage HIV and AIDS” (IDI, R1, FGS Patient, Female)*

557 In addition, other participants elaborated that, patients travel to other regions or communities to seek  
558 HIV care due to issues of stigma:

559 *“For me, I come to (facility name) polyclinic for care I was literally transferred from*  
560 *(Another facility name). So, from then, I have been seeking care...People do seek for care at*  
561 *other polyclinics like Kasoa polyclinic, people go all the way to Winneba because they do not*  
562 *want others to know of their status. And sometimes the herbal clinics but I prefer here” (IDI,*  
563 *R3, HIV Patient, Female)*

564 *“...Usually, it's also for the individual to determine where he or she is comfortable accessing*  
565 *services. There are some people who reside in Adabraka but they prefer going to Dodowa*  
566 *District Hospital to access services because of stigma. Some people attribute HIV to be a*  
567 *spiritual problem. So, once their intention is spiritual, they will never come to a health*  
568 *facility” (KII, R2, Male)*

569

570 The findings also revealed challenges that are associated with health care facilities where HIV care is  
571 provided. The most common challenges realized were shortage of medication, inadequate logistics  
572 and health care providers.

573 *“When it comes to the (facility name) polyclinic their approach of health care is really good,*  
574 *there are no delays, and they also do really take care of emergencies. But unfortunately, the*  
575 *beds there for patients are not enough, they do run out of medications quickly and lack some*  
576 *logistics to carry on some test and operations...there need to be provision of more facilities,*  
577 *and more trained nurses and doctors” (IDI, R6, CHMC, Male)*

578 *“If I would say (Facility name) should have drugs always to prevent shortage more also*  
579 *Kasoa will be provided with more working staff like nurses and a laboratory with testing kits.*

580 *With Winneba, I cannot say much about it because I have been there and is quiet far from my*  
581 *place” (IDI, R3, HIV Patient, Female)*

582

### 583 **Care provision for Female Genital Schistosomiasis**

584 Regarding where community members seek care for Female Genital Schistosomiasis, many of the  
585 participants expressed that, care is usually sought from health facilities within the community.

586 *‘We visit the hospital for care... We only seek care from the hospital” (IDI, R1, FGS Patient,*  
587 *Female).*

588 *“Some health professionals came around the community to take care of us having the disease.*  
589 *That is, bringing us medications every month. Some members go to our nearby clinic and*  
590 *Amanfrom polyclinic” (IDI, R9, FGS Patient, Female).*

591 Some community members however indicated that, initially, many people perceive it as a spiritual  
592 sickness as it was associated with the river hence, they seek traditional and spiritual treatments.

593 *“Individuals do seek care at different places. At first, we didn’t really know of the disease so*  
594 *some symptoms like blood in the urine and having itching body, after the use of the water,*  
595 *some thought it was a spiritual sickness because of the water people use, so most people were*  
596 *resorting to herbal clinics and the spiritualist” (IDI, R5, Female Household)*

597 *“Some go to the herbal clinics and churches. Churches because is a water disease they*  
598 *assume or take it to be a spiritual sickness, so they prefer going to the church to be prayed*  
599 *for” (IDI, R6, CHMC, Male)*

600

601 The study further revealed that there are challenges with identifying FGS cases, diagnosis and  
602 recording especially among healthcare providers. Most of these challenges were associated with  
603 unavailability to test and diagnose FGS at the community level hence, persons who present symptoms  
604 like FGS are either referred to higher facility for laboratory test, and some of these people end up  
605 going for herbal treatment. Also, due to FGS having similar symptoms as STIs, they are mostly  
606 recorded under STIs within health records hence it is difficult to get data on the number of FGS cases  
607 from health facility records within the community though high number of people are presenting cases

608 of FGS. Below are some quotes from key informants highlighting challenges with FGS diagnosis and  
609 recording:

610

611 *“For our place, Tomefa, usually when we share or talk about the disease to them, they know*  
612 *where they fall but normally, they come with severe urinary tract infection When they come,*  
613 *we do a first line test with them by going to the laboratory to be tested. We refer them to*  
614 *Amanfrom Polyclinic but normally if you refer them, they wouldn't come. Instead, they tend to*  
615 *visit these herbal shops to buy some drugs over there rather. So, at our place we do not have*  
616 *any specific thing used in identifying the female schistosomiasis. We have a known procedure*  
617 *for treating the disease. So, we normally treat it as a urinary tract infection” (FGD, R4,*  
618 **CHOs)**

619

620 *“...That it isn't captured. It's probably handled as an STI and the person is given some*  
621 *medicines, and it is tallied as genital ulcer or urethral discharge or something, which is an*  
622 *STI. So probably that is what happens until they go to meet a clinician who is taking a proper*  
623 *history to know your background, to even suspect that because you've had exposure to certain*  
624 *environments that have certain water bodies, you are likely to, this could be a differential and*  
625 *then they chart that path. So, it is unfortunate. It tells us that we have to really open our eyes”*  
626 **(KII, R1, Female)**

627

628 *“Anything that is genital infections are STIs. So, we always classify it as an STI. So, I think*  
629 *recently a proposal to train of clinicians. Especially, in last year, when we were about to have*  
630 *the campaign, the exercise. Through the discussion, we were informed (name of Health*  
631 *worker) that there can organized training for the clinicians. Okay. So, they can also be aware*  
632 *that we have female genital schistosomiasis, and it will help us a lot.... Yes. If the clinician*  
633 *suspects it as bilharzia or schistosomiasis, then records will also document it as such. But if*  
634 *the clinician doesn't suspect it's an STI, it will be difficult for you to give me documentation to*  
635 *also change the STI to a schistosomiasis” (KII, R2, Male)*

636

637 Some possible solution suggested to address challenges with FGS diagnosis and record keeping at the  
638 healthcare facility levels include training of health care providers and awareness creation:

639 *“We have to organize training at all levels so that we will have knowledge about the condition*  
640 *and where to refer and how to treat it, because we have health centers, we have CHPS*  
641 *compound, so at the CHPS compound, they have to get more knowledge about it so that when*  
642 *the cases come, they will know what to do” (KII, R3, Female)*

643 *“In my opinion, I think staff at the various clinics and hospital must be well trained to*  
644 *elaborate more on the disease FGS, to be able to provide quality health care for the patients”*  
645 *(KII, R6, Male)*

646

### 647 **Integrating Care Provision for Female Genital Schistosomiasis and HIV and AIDS Care in the** 648 **Community**

649 The study participants had divergent views regarding the integration of care provision for Female  
650 Genital Schistosomiasis (FGS) and HIV and AIDS. Some community participants were not in  
651 support of integrated care for FGS and HIV and AIDS. They cited cultural and societal factors such  
652 as norms, beliefs, and practices related to both diseases, along with concerns about discrimination and  
653 stigma associated with HIV and AIDS. Participants also raised issues regarding treatment methods  
654 and diagnoses.

655

656 *“I don’t think integration of this disease care will be possible. This is because a lot of people*  
657 *do talk about it and these two people going to the same place will be assumed in the minds of*  
658 *people that all have contracted the HIV disease. So, me for example, if I have been diagnosed*  
659 *for FGS and am told to go to the same place where HIV patients go, I wouldn’t” (IDI, R7,*  
660 *Female Household)*

661

662 *“It is not good... it is not good at all. Clients may be misdiagnosed. In addition, it will*  
663 *promote stigmatization as well as infringing on health privacy. People may spread health*  
664 *information of client” (IDI, Community Leader, Male)*

665



666 *“With the integration of both the FGS and HIV and AIDS, I don’t think Integrating their care*  
667 *together will be a good one, this is because of stigmatization. For instance, if I am battling*  
668 *with FGS, I don’t think, I will go to such a place for care because I wouldn’t feel comfortable.*  
669 *Many thoughts will run through my head and people may stigmatize me...I will not like the*  
670 *integrated care because, humans can make mistakes and health workers could mistakenly give*  
671 *HIV medication to FGS patients and vice versa when persons having these separate*  
672 *conditions are receiving care from the same unit. So, I will prefer separate care for FGS*  
673 *patients and HIV patients” (IDI, R5, Female Household)*

674

675

676 Furthermore, most FGS patient fear they will be associated with HIV and AIDs within the community  
677 hence will not want to receive treatment where HIV care is given:

678

679 *“I do not agree on this at all. What will people say? And for instance, I being an FGS patient,*  
680 *and you tell me to patronize my health care at the same place where HIV patients go, I*  
681 *wouldn’t go at all. This is because people talk too much; I am going to be seen in a different*  
682 *light which I wouldn’t like. They will even classify me as part of the HIV patient” (IDI, R8,*  
683 *FGS Patient, Female)*

684

685

686 *“For that I do not think I will agree to this. What would people say if for instance they see me*  
687 *coming from a pace like that? It is not a bad place, but people will begin to think someway of*  
688 *you...for me it won’t be accepted at all because of how people talk and even how people will*  
689 *begin to act towards you” (IDI, R10, FGS Patient, Female)*

690

691

692 Though some HIV patients were okay with the integration, others also were not in support due to  
693 issues of stigma:

694

695 *“I think it's not good, you see I told you that even when I came here, I was very skeptical about whom*  
696 *to even ask for directions to the HIV unit, I can't just ask any random person and they will stigmatize*



697 *against me, so I don't think they should be mixed, we are all human beings but I don't think we should*  
698 *be mixed... you know we the HIV patients and that of the FGS patients are not equal, so, in case we*  
699 *all meet at the same place they might go and tell on you or stigmatize against you, because when you*  
700 *have malaria, you have a place you will go to, if you have a mental situation too same, so it should be*  
701 *the same for HIV patients too, we shouldn't be mixed together, everybody should be in their lane”*  
702 ***(IDI, R2, HIV Patient, Female)***

703

704 Conversely, many key informants viewed integration of FGS and HIV positively, especially for HIV  
705 clients who may have FGS. They highlighted integration as a cost-effective approach that will reduce  
706 stigma, promotes holistic patient care, and optimizes resource utilization. However, there must be a  
707 lot of capacity building for health care providers and availability of logistics to enable an effective  
708 integration.

709 *“Okay, so integration is the way forward. I mean, once you integrate, you build capacity so*  
710 *that this service provider, wherever they find themselves, will be able to provide care. And*  
711 *integration is economical. It makes a lot of sense to integrate so that you don't go to the*  
712 *hospital one day for your HIV care and then go another day for your other condition, for this*  
713 *other care, for this NTD [Neglected Tropical Disease] that you have. Now, we need to*  
714 *integrate as much as possible. Get people sensitized. So, if there's the service provider who is*  
715 *already providing ART [antiretroviral treatment] care, why don't we just provide some*  
716 *capacity building, build their capacity in how to manage FGS” (KII, R1, Female)*

717

718 *“Yeah, the reason as I said, it will be cost effective. Already people who have HIV and AIDS*  
719 *don't want to be seen to be going around and all. They want to maintain confidentiality and*  
720 *things. So, if the people managing them, the HIV, also know that they have the FGS, then they*  
721 *will be able to manage that in addition to other things that they are managing. So, I*  
722 *recommend the integration of those two services. They are key” (KII, R8, Male)*

723

724

## 725 **Perceived Implementation Facilitators and Enablers**

726 Perceived implementation facilitators/enablers were also explored among study participants at the  
727 individual, community and facility levels.

728

729

730 At the individual level, the most common enabling factor for a successful buy-in to integration of  
731 FGS and HIV care was education and awareness creation. These are evident in the narratives below:

732

733 *“If education is done properly, I can even educate my friends and family as well” (IDI, R10,*  
734 *FGS Patient, Female).*

735

736 *“If I gain the understanding of why the integration is taken place and how carefully it will be*  
737 *done, if the health professionals are going to put things in place like offering their people*  
738 *good training on this integration and how they will treat and take care of things like*  
739 *medication, then I will also inform and explain to my friends about it and my family and*  
740 *neighbours about the initiative. (IDI, R9, Female Household)*

741

742 *“Education, at the individual level. It can be individual, at school, the churches, and*  
743 *communities. Education is the key to all this. Because if you don't understand the thing, how*  
744 *will you accept the person, or how will you deal with the person? So, education is the key*  
745 *factor” (KII, R13, Female)*

746

747

748 In addition to the above, some other participants indicated that, reduction in stigmatization,  
749 confidentiality of clients (patients) health records and an effective insurance will also facilitate buy-in  
750 of FGS and HIV care integration at the individual level. These are expressed in some participants’  
751 comments below:

752 *“At the individual level I see reduction in stigma as a facilitator or enabler that will enable*  
753 *people to accept the integration. Another facilitator at the individual level will be efficient*  
754 *health insurance. If the health insurance works properly that will be an enabler towards the*  
755 *integration of care” (KII, R1, Female)*

756

757 *“Trust must be built between the health workers and the clients. In addition, confidentiality*  
758 *must be assured. If the clients later hear of its health information in the public, it will affect*  
759 *the integration drive” (KII, R4, Female)*

760

761 At the community level, enabling factors identified for an effective care integration for FGS and HIV  
762 care include engagement of key stakeholders such as opinion leaders, chiefs, Assembly members  
763 throughout the planning and implementation processes as well as education of community members  
764 through mediums such as community durbars and health screening activities. Below are some  
765 statements from study participants:

766

767 *“They must organize a community durbar. The chiefs, the assembly members, unit committee*  
768 *members and the entire community must be educated on the integration. In addition, there will*  
769 *be the need to use the community health volunteers to educate the community. In addition, the*  
770 *public address system in the community must be utilized to send information on the*  
771 *integration across” (IDI, R1, CHMC, Male)*

772

773 *“I think the community must be well communicated about this integration through durbars,*  
774 *coming to churches stating the advantages and disadvantages about this integration” (IDI,*  
775 *R5, Female Household)*

776

777 *“We create awareness through durbars and opportunity that will get us into the community.*  
778 *We can use information centres, go to churches, screenings held at marketplaces and bus*  
779 *stations. This is because; screening brings in a lot of people. If their sugar level is being*  
780 *checked, being educated on their diet, we can also add information about the FGS too. For*  
781 *instance, I would say last month, we carried on some screening in the community, and we*  
782 *added on service for registering individuals for their National health Insurance Scheme*  
783 *(NHIS). And we had a lot of people trooping in. So, with this we can add on service with the*  
784 *FGS, and it will be effective” (KII, R6, Male)*

785

786 *“And the community, I think you people should involve the opinion leaders in the community*  
787 *too. Wherever you go, I think if you go to a community and you involve the opinion leaders,*

788 *and you let the opinion leaders, you educate them, you let them talk to the people in their own*  
789 *language, and they understand it better than maybe a stranger going to talk to them” (KII,*  
790 *R13, Female)*

791

792

793 In addition to the above, some participants stressed on the importance of continuous awareness  
794 creation on HIV among community members to decrease stigmatization of Persons Living with HIV  
795 to enable an effective integration of FGS and HIV care at the community level:

796 *“The community needs to be educated more about HIV and FGS, there is this lady who told*  
797 *people about her status in the community, and the kind of treatment they give her, I am always*  
798 *sad when I see her, but you can't say much because it's their family affair so the community*  
799 *needs to know that though you are HIV positive you are human just like any other person so*  
800 *the community really needs to be educated... I think it's all about the communication and*  
801 *education, if you don't educate them, the integration will not be successful so when the*  
802 *community accepts everybody irrespective of your status it will be okay” (IDI, R1, HIV*  
803 *Patient, Female)*

804

805 For the facility level, the study revealed many perceived enabling factors for an effective integration  
806 of FGS and HIV care. Some of the major enabling factors identified include the availability of  
807 logistics, medication and the accessibility of these mediations by patients as well as the quality of  
808 health care provided:

809

810 *“It is about the availability of medications and the diagnostic tools” (IDI, R2, FGS Patient,*  
811 *Female)*

812

813 *“If at a national level we don't have the medicines for treating the condition, yes, I've been*  
814 *tested, it's been seen, but the medicines to manage the condition is not there. So, I'll still be*  
815 *going round, round and round. If the medicine is there, it is expensive. I cannot pay for it also.*  
816 *It is there, but I cannot afford it. So, I am also denied access to it. So, these are the things.*  
817 *Then the quality of the service itself. You get it and they don't even tell you how to use it*  
818 *properly so” (KII, R8, Male)*

819

820 *“The government should also play its part. It should give you people whatever you need for*  
821 *the work to go on. Supply you the drugs, the personnel should be there, everything should be*  
822 *there. Because of all these things, if you don't have the resources, I'm sorry, how do you do*  
823 *the work? So, the government should also play his part” (KII, R13, Female)*

824

825 Participants also stressed on training and capacity building for health care providers to enable them  
826 effectively to provide integrated care for FGS and HIV:

827 *“There should be periodic training. WHO always comes up with new ideas and people*  
828 *clinicians and staff need to be trained on these issues. I think health workers will need*  
829 *training and retraining. Health space as well. It's all part of the conditions of the health*  
830 *worker” (KII, R1, Female)*

831

832 *“At the facility level, more trained health workers must be provided, more logistics and*  
833 *medications must be provided to help facilitate the integration properly” (IDI, R6, Female*  
834 *Household)*

835

836

837 Some other study participants also mentioned the need to utilise existing HIV structures and the need  
838 to provide some motivation to healthcare providers to enable an effective FGS and HIV care  
839 integration at the facility level. These are expressed in the participants comments below:

840

841 *“Okay, so for HIV, the system has already been established and that is a potential enabler for*  
842 *integration. We are just adding on the service. HIV already exists, we are testing, educating,*  
843 *managing, counselling and treating. Since the structure has already been established, it will*  
844 *be easier for us to pluck the FGS service” (KII, R6, Male)*

845

846 *“We should motivate our health workers. The nurses and the doctors should be well*  
847 *motivated so that they will give them (patients) the best care when they come there. In terms of*  
848 *counseling, in terms of handling, in terms of all the services that they provide. If they are well*

849 *motivated, they will do the work as expected. And it will encourage people to be coming to the*  
850 *facility all the time” (KII, R12, Male)*

851

## 852 **Discussions**

853 The study found that knowledge on HIV was high among all study participants as compared to FGS.  
854 Community members were able to describe the mode of transmission for HIV, the availability of HIV  
855 treatment/medication and prevention methods for HIV and how this knowledge has helped many  
856 community members protect themselves from HIV/AIDS infection. This high level of HIV/AIDS  
857 knowledge could be attributed to the increase awareness creation of HIV over the years which has  
858 also been realized in other studies as a widely known public health problem among diverse population  
859 [22].

860

861 Knowledge of FGS was however realized to be generally low especially among community health  
862 workers and HIV patients. Most female community members who expressed knowledge about FGS  
863 described gynecological symptoms experienced by them which include blood in urine, itchiness and  
864 abdominal pain and pain around the vagina [10] and they mostly refer to the disease as water-borne  
865 disease. All participants indicated the use of the river within the community was the mode of  
866 transmission of FGS.

867

868 The knowledge gap of FGS identified in this study is evident in other studies conducted in Ghana and  
869 other African countries that also realized low level of FGS knowledge among community members  
870 and health workers [23]-27]. The low level of knowledge of FGS among study participants especially  
871 Community Health Officers could be attributed to the disease not being mentioned in medical  
872 textbooks or thought during health trainings, or limited awareness creation and education on FGS at  
873 community level [23,28-30]. There is therefore the need for an increased awareness creation of FGS  
874 among community members through mediums such as the radio, television, community information  
875 centers, churches, Child Welfare Clinics (CWC), marketplaces, lorry stations and community durbars  
876 as indicated by study participants. Also, there need to be an intensive training of health workers  
877 especially Community Health Officers working in Schistosomiasis endemic communities, on Female  
878 Genital Schistosomiasis to address the knowledge gap of FGS.

879

880 Regarding care provision for FGS and HIV, many of the study participants indicated that care is  
881 mainly sought from hospitals, health centres and clinics. It was also realized that, some HIV patients  
882 have to travel far to seek HIV care at farther places often in another district or region due to issues of  
883 stigma [31-33]. Though there has been progress made regarding HIV care in Ghana over the years,  
884 there is still the need to address challenges such as stigma, availability of resources needed for HIV  
885 treatment and increased coverage of Antiretroviral Therapy ART [29].

886  
887 Generally, FGS was diagnosed and treated as STIs and this misdiagnosis has been reported as a  
888 common issue in FGS endemic communities in other African settings [23, 35]. In Ghana the adoption  
889 of the syndromic management for STIs and lack of specialized health workers in the community  
890 negatively affected the early detection and management of FGS among people who have HIV. The  
891 inability of health care providers to adequately diagnose and treat FGS has been realized as a major  
892 gap in addressing FGS and co-morbidities [25]. This calls for the need to build the capacity of health  
893 workers on FGS, especially those who operate at the community level (Community Health Officers).  
894 When this is done, it will lead to better understanding and community surveillance for both HIV and  
895 FGS given the fact that Ghana is endemic country with distribution of the condition clustering around  
896 communities with water bodies. Communities in which the FGS infection is most endemic have  
897 limited access to clean water and healthcare services [31]. In such endemic communities it is  
898 estimated that between 33-75% of women have FGS yet few of these cases are diagnosed correctly  
899 [9]. Though some community members seek FGS care from health facilities, others still attribute FGS  
900 as a spiritual sickness as it is associated with the river and therefore seek traditional, herbal and  
901 spiritual treatment for FGS [23, 37, 38].

902  
903 Ghana schistosomiasis control efforts are mostly relying on the Mass Drug Administration of  
904 Praziquantel to school aged children whilst neglecting other risk groups such as reproductive aged  
905 women. However, these efforts may not yield the desired impact if cases are not diagnosed early and  
906 treated. Undiagnosed cases in the community become the reservoir for infection [34]. Therefore, to  
907 break the cycle of infection would require treating infected individuals. This is important in the  
908 country drive towards the elimination of HIV through the achieving the 95-95-95 global agenda.

909



910 In terms of implementation of integrated model for HIV and FGS, participants living with FGS or  
911 HIV/AIDS, including community health committee members, female household participants, and  
912 some school health teachers, shared concerns about stigmatization and the mode of transmission,  
913 leading them to oppose integrating FGS and HIV care. Both HIV and FGS are associated with severe  
914 social stigma in Africa. There is the need for intensified education about both diseases at the  
915 community level. Stigma can be reduced through community-based screening of women during  
916 outreach. Both HIV and FGS screening can easily be done at the community level using Oroquick  
917 and urine dipstick for microhaematuria respectively [26]. To be able to effectively integrate these  
918 two conditions would require development of clinical protocols for female genital schistosomiasis. In  
919 this study, health workers revealed that the absence of clinical protocol as one of barriers for routine  
920 screening of women for FGS.

921

922 Despite the low knowledge of FGS, the study identifies some facilitators for effective implementation  
923 of integrated care for FGS and HIV/AIDS. Use of community engagement strategies such  
924 partnerships and collaborations between various outlets for service delivery was recommended.  
925 Participants acknowledge the existence of different categories of health care providers including  
926 biomedical, spiritual and herbal healers and care was sought from these outlets either sequentially or  
927 concurrently (Figure 2). In a plural medical systems, people may identify with one or more of the  
928 three health systems; professional sector (biomedical), folk and the popular system [35] and in recent  
929 times, spiritual sector. Both orthodox and alternative health systems exist in Ghana. Many  
930 individuals, especially those from non-Western cultures, have been reported to have a holistic concept  
931 of health and disease that entails a spiritual aspect of disease causation [36]. In Ghana, biomedical  
932 model of health and disease concepts are widespread. Nonetheless, earlier qualitative studies  
933 demonstrate that many people still hold holistic concepts of health that incorporate spiritual factors in  
934 addition to physical and psychosocial factors [37,38]. Government should establish effective  
935 partnership with community influencers such as chiefs, Imams, and religious leaders to quickly assess  
936 the community readiness and to facilitate any future interventions in the community in case of public  
937 health emergencies and tragedies. The low knowledge could continue to push people toward non-  
938 orthodox health outlets who may not have the capacity to detect and manage FGS.

939

940 Figure 2: Health seeking behaviour of people with FGS



941 In addition, increasing awareness creation regarding FGS to address existing knowledge gap and care  
942 as well as destigmatisation of HIV among community members are crucial for effective integration of  
943 FGS and HIV/AIDS. Consequently, health worker capacity needs to be built especially regarding  
944 FGS diagnosis and care as well as in the provision of an effective integrated care for FGS and  
945 HIV/AIDS. Provision and availability of needed logistics, human resources and medications for both  
946 FGS and HIV are also crucial for successful integration. Addressing these gaps will contribute to an  
947 effective and sustainable integrated care for FGS and HIV and AIDS [38, 44].

948 While awareness creation and education among community members, capacity building of health care  
949 providers and administration of MDA will help control the incidence of FGS, effective solutions such  
950 as provision of portable drinking water within endemic communities are key in preventing FGS  
951 transmission in Ghana. Also, providing an integrated care for FGS and HIV and AIDs will contribute  
952 to a reduction in long-term reproductive health problems to women and girls who are often  
953 marginalized groups within communities. Local, regional, global health professionals and policy  
954 makers need to therefore play their respective roles in addressing existing gaps for FGS knowledge  
955 and care provision for FGS and HIV/AIDS to enable successful and sustainable integrated care for  
956 FGS and HIV/AIDS.

#### 957 **Study limitations.**

958 Our study did not adequately elicit community members' knowledge on the association between  
959 freshwater snails, the intermediate host, their specific habitats and schistosomiasis. One of the core  
960 strategic interventions proposed in the WHO road map for neglected tropical diseases 2021-2030 for  
961 ending the neglect to attain the Sustainable Development Goals is snail control with molluscicides,  
962 physical removal and environmental modification [5]. It is imperative that community members are  
963 aware of these interventions and understand which role(s) they can undertake to contribute towards  
964 control/elimination efforts in their settings [45].

#### 965 **Conclusions and recommendations**

966 Th study concludes both community members and community health officers/workers had a generally  
967 poor level of knowledge about FGS. This was negatively affecting routine screening of females for  
968 genital schistosomiasis. Integration of FGS and HIV has the potential to contribute towards Ghana  
969 achieving elimination of HIV, however barriers in implementation need to be addressed before the

970 roll out of such a program. The findings also suggest that developing partnership and collaboration  
971 with different health care providers in the community may contribute to early detection and  
972 management for HIV and FGS. Finally, there is the urgent need to develop a national clinical protocol  
973 for integration and capacity building of community health workers. Further, there is need to educate  
974 community members on the linkage between schistosomiasis and freshwater snails and the role they  
975 could play in the control and elimination of the disease intermediate hosts.

976

## 977 **List of Abbreviations**

<b>Abbreviation</b>	<b>Meaning</b>
AIDS	Acquired Immunodeficiency Syndrome
CHMC	Community Health Management Committee
CHOs	Community Health Officers
CHPS	Community-based Health Planning and Services
FGDs	Focus Group Discussions
FGS	Female Genital Schistosomiasis
GHS	Ghana Health Service
HH	Household Heads
HIV	Human Immunodeficiency Virus
IDIs	In-depth interviews
KIIs	Key Informant Interviews
MoH	Ministry of Health
NTD	Neglected Tropical Disease
SDGs	Sustainable Development Goals
WASH	Water, Sanitation and Hygiene
WHO	World Health Organization

978

979

## 980 **Acknowledgements**

981 We would like to thank all stakeholders: members and staff from the Ghana Health Service (GHS),  
982 NTD and FGS health care professionals and providers at the National, Regional, District and  
983 community levels, the team of Ga South Municipal Health Directorate led by the District Health

984 Director, Staff of Amanfro Polyclinic and all CHPS facilities within the study district, as well as FGS  
985 and HIV patients and community members who committed time to share experiences and provide  
986 data for this study. Also, we are very grateful to the field staff who participated in the data collection  
987 process for their meticulous work.

988

989

#### 990 **Availability of data and materials**

991 Data and materials are available upon reasonable request

992

#### 993 **Funding**

994 This research was supported by the Access and Delivery Partnership (ADP). ADP is funded by the  
995 Government of Japan and led by the United Nations Development Programme, in collaboration with  
996 the World Health Organization, the Special Programme for Research and Training in Tropical  
997 Diseases (TDR) and PATH through the University of Ghana School of Public Health, Legon [Grant  
998 ID: 2023/1408508-0].

999

#### 1000 **Conflict of interest**

1001 The authors declare that no conflict of interest exists.

1002

1003

1004

1005

1006

1007

1008

1009

1010

1011

1012

## 1013 **References**

- 1014 1. WHO. Schistosomiasis: key facts. In: World Health Organization [Internet]. 2019 [cited 2 Nov  
1015 2023]. Available: <http://www.who.int/mediacentre/factsheets/fs115/en/>, accessed May 2019
- 1016 2. Walz Y, Wegmann M, Dech S, Vounatsou P, Poda JN, N’Goran EK, et al. Modeling and  
1017 Validation of Environmental Suitability for Schistosomiasis Transmission Using Remote  
1018 Sensing. *PLoS Negl Trop Dis*. 2015;9: 1–22. doi:10.1371/journal.pntd.0004217
- 1019 3. Ursini T, Scarso S, Mugassa S, Othman JB, Yussuph AJ, Ndaboine E, et al. Assessing the  
1020 prevalence of Female Genital Schistosomiasis and comparing the acceptability and  
1021 performance of health worker-collected and self-collected cervical-vaginal swabs using PCR  
1022 testing among women in North-Western Tanzania: The ShWAB study. *PLoS Negl Trop Dis*.  
1023 2023;17: 1–15. doi:10.1371/journal.pntd.0011465
- 1024 4. Anyan WK, Pulkkila BR, Dyra CE, Price M, Naples JM, Quartey JK, et al. Assessment of dual  
1025 schistosome infection prevalence from urine in an endemic community of Ghana by molecular  
1026 diagnostic approach. *Parasite Epidemiol Control*. 2020;9: e00130.  
1027 doi:10.1016/j.parepi.2019.e00130
- 1028 5. WHO. Ending the neglect to attain the sustainable development goals: a road map for  
1029 neglected tropical diseases 2021–2030. Geneva; 2020.
- 1030 6. Kiesolo FN, Sampa M, Moonga G, Michelo C, Jacobs C. Coverage and predictors of the  
1031 uptake of the mass drug administration of praziquantel chemotherapy for schistosomiasis in a  
1032 selected urban setting in Zambia. *Front Epidemiol*. 2023;3: 1–8.  
1033 doi:10.3389/fepid.2023.1168282
- 1034 7. Akosah-Brempong G, Attah SK, Hinne IA, Abdulai A, Addo-Osafo K, Appiah EL, et al.  
1035 Infection of *Plasmodium falciparum* and helminths among school children in communities in  
1036 Southern and Northern Ghana. *BMC Infect Dis*. 2021;21: 1–9. doi:10.1186/s12879-021-06972-  
1037 1
- 1038 8. Kulinkina A V., Walz Y, Koch M, Biritwum NK, Utzinger J, Naumova EN. Improving spatial  
1039 prediction of *Schistosoma haematobium* prevalence in southern Ghana through new remote  
1040 sensors and local water access profiles. *PLoS Negl Trop Dis*. 2018;12.  
1041 doi:10.1371/journal.pntd.0006517
- 1042 9. Hotez P. Female Genital Schistosomiasis (FGS): Sub-Saharan Africa’s Secret Scourge of Girls  
1043 and Women. *PLoS Med*. 2013.

- 1044 10. Kjetland EF, Kurewa EN, Ndhlovu PD, Midzi N, Gwanzura L, Mason PR, et al. Female  
1045 genital schistosomiasis - A differential diagnosis to sexually transmitted disease: Genital itch  
1046 and vaginal discharge as indicators of genital *Schistosoma haematobium* morbidity in a cross-  
1047 sectional study in endemic rural Zimbabwe. *Trop Med Int Heal*. 2008;13: 1509–1517.  
1048 doi:10.1111/j.1365-3156.2008.02161.x
- 1049 11. Brodish PH, Singh K. Association between *Schistosoma haematobium* exposure and human  
1050 immunodeficiency virus infection among females in Mozambique. *Am J Trop Med Hyg*.  
1051 2016;94: 1040–1044. doi:10.4269/ajtmh.15-0652
- 1052 12. Downs JA, Mguta C, Kaatano GM, Mitchell KB, Bang H, Simplicie H, et al. Urogenital  
1053 schistosomiasis in women of reproductive age in Tanzania’s Lake Victoria region. *Am J Trop*  
1054 *Med Hyg*. 2011;84: 364–369. doi:10.4269/ajtmh.2011.10-0585
- 1055 13. Kjetland EF, Ndhlovu PD, Gomo E, Mduluzi T, Midzi N, Gwanzura L, et al. Association  
1056 between genital schistosomiasis and HIV in rural Zimbabwean women. *Aids*. 2006;20: 593–  
1057 600. doi:10.1097/01.aids.0000210614.45212.0a
- 1058 14. Ndeffo Mbah ML, Poolman EM, Drain PK, Coffee MP, van der Werf MJ, Galvani AP. HIV  
1059 and *Schistosoma haematobium* prevalences correlate in sub-Saharan Africa. *Trop Med Int*  
1060 *Heal*. 2013;18: 1174–1179. doi:10.1111/tmi.12165
- 1061 15. Yaro PB, Asampong E, Tabong PT, Anaba SA, Azuure SS, Dokurugu AY, et al. Stakeholders  
1062 ’ perspectives about the impact of training and sensitization of traditional and spiritual healers  
1063 on mental health and illness : A qualitative evaluation in Ghana. *Int J Soc Psychiatry*. 2020; 1–  
1064 9. doi:10.1177/0020764020918284
- 1065 16. GA South Municipal Assembly. Welcome | GA South Municipal Assembly.
- 1066 17. Ghana Statistical Service. Ghana 2021 Population and Housing Census: General Report  
1067 Volume 3A. *J Penelit Pendidik Guru Sekol Dasar*. 2021;6: 128.
- 1068 18. Aryeetey ME, Wagatsuma Y, Yeboah G, Asante M, Mensah G, Nkrumah FK, et al. Urinary  
1069 schistosomiasis in southern Ghana: 1. Prevalence and morbidity assessment in three (defined)  
1070 rural areas drained by the Densu river. *Parasitol Int*. 2000;49: 155–163.
- 1071 19. Anyan WK, Abonie SD, Aboagye-Antwi F, Tettey MD, Nartey LK, Hanington PC, et al.  
1072 Concurrent *Schistosoma mansoni* and *Schistosoma haematobium* infections in a peri-urban  
1073 community along the Weija dam in Ghana: A wake up call for effective National Control  
1074 Programme. *Acta Trop*. 2019;199: 105116.

- 1075 20. Cunningham LJ, Campbell SJ, Armoo S, Koukounari A, Watson V, Selormey P, et al.  
1076 Assessing expanded community wide treatment for schistosomiasis: Baseline infection status  
1077 and self-reported risk factors in three communities from the Greater Accra region, Ghana.  
1078 PLoS Negl Trop Dis. 2020;14: e0007973.
- 1079 21. Andersen R. Revisiting the behavioral model and access to medical care: does it matter? J Heal  
1080 Soc Behav. 1995;36: 1-10.
- 1081 22. Yirenya-Tawiah DR, Ackumey MM, Bosompem KM. Knowledge and awareness of genital  
1082 involvement and reproductive health consequences of urogenital schistosomiasis in endemic  
1083 communities in Ghana: a cross-sectional study. Reprod Health. 2016;13: 1–8.
- 1084 23. Kukula VA, MacPherson EE, Tsey IH, Stothard JR, Theobald S, Gyapong M. A major hurdle  
1085 in the elimination of urogenital schistosomiasis revealed: Identifying key gaps in knowledge  
1086 and understanding of female genital schistosomiasis within communities and local health  
1087 workers. PLoS Negl Trop Dis. 2019;13: e0007207.
- 1088 24. Azanu WK, Osarfo J, Appiah G, Godonu YS, Ampofo GD, Orish V, et al. Knowledge of  
1089 female genital schistosomiasis and urinary schistosomiasis among final-year midwifery  
1090 students in the Volta Region of Ghana. PLoS One. 2024;19: e0302554.
- 1091 25. Christinet V, Lazdins-Helds JK, Stothard JR, Reinhard-Rupp J. Female genital schistosomiasis  
1092 (FGS): From case reports to a call for concerted action against this neglected gynaecological  
1093 disease. Int J Parasitol. 2016;46: 395–404. doi:10.1016/j.ijpara.2016.02.006
- 1094 26. Engels D, Hotez PJ, Ducker C, Gyapong M, Bustinduy AL, Secor WE, et al. Integration of  
1095 prevention and control measures for female genital schistosomiasis, hiv and cervical cancer.  
1096 Bull World Health Organ. 2020;98: 615–624. doi:10.2471/BLT.20.252270
- 1097 27. Dako-Gyeke M, Dako-Gyeke P, Asampong E. Experiences of stigmatization and  
1098 discrimination in accessing health services: voices of persons living with HIV in Ghana. Soc  
1099 Work Health Care. 2015;54: 269–285.
- 1100 28. Adjetey V, Obiri-Yeboah D, Dornoo B. Differentiated service delivery: a qualitative study of  
1101 people living with HIV and accessing care in a tertiary facility in Ghana. BMC Health Serv  
1102 Res. 2019;19: 1–7.
- 1103 29. Boah M, Yeboah D, Kpordoxah MR, Issah A-N, Adokiya MN. Temporal trend analysis of the  
1104 HIV/AIDS burden before and after the implementation of antiretroviral therapy at the  
1105 population level from 1990 to 2020 in Ghana. BMC Public Health. 2023;23: 1399.

- 1106 30. Mwangi JR, Magnussen P, Aagaard-Hansen J. Schistosomiasis-related perceptions, attitudes  
1107 and treatment-seeking practices in Magu district, Tanzania: public health implications. *J*  
1108 *Biosoc Sci.* 2004;36: 63–81.
- 1109 31. Hotez P, Whitham M. Helminth infections: A new global women’s health agenda. *Obs*  
1110 *Gynecol.* 2014;123: 155–160.
- 1111 32. Angelo T, Kinung’hi SM, Buza J, Mwangi JR, Kariuki HC, Wilson S. Community knowledge,  
1112 perceptions and water contact practices associated with transmission of urinary schistosomiasis  
1113 in an endemic region: a qualitative cross-sectional study. *BMC Public Health.* 2019;19: 1–10.
- 1114 33. Mazigo HD, Samson A, Lambert VJ, Kosia AL, Ngoma DD, Murphy R, et al. “Female genital  
1115 schistosomiasis is a sexually transmitted disease”: Gaps in healthcare workers’ knowledge  
1116 about female genital schistosomiasis in Tanzania. *PLOS Glob Public Heal.* 2022;2: e0000059.  
1117 doi:10.1371/journal.pgph.0000059
- 1118 34. Nelwan ML. Schistosomiasis: Life Cycle, Diagnosis, and Control. *Curr Ther Res - Clin Exp.*  
1119 2019;91: 5–9. doi:10.1016/j.curtheres.2019.06.001
- 1120 35. Kleinman A. Concepts and a model for the comparison of medical systems as cultural systems.  
1121 *Soc Sci Med.* 1978;12: 85–93.
- 1122 36. Kendler KS. Explanatory models for psychiatric illness. *American Journal of Psychiatry.* 2008.  
1123 doi:10.1176/appi.ajp.2008.07071061
- 1124 37. Tabong PT-N, Adongo PB. Understanding the social meaning of infertility and childbearing: a  
1125 qualitative study of the perception of childbearing and childlessness in Northern Ghana. *PLoS*  
1126 *One.* 2013;8: e54429.
- 1127 38. Ngom P, Debpuur C, Akweongo P, Adongo P, Binka FN. Gate-keeping and women’s health  
1128 seeking behaviour in Navrongo, northern Ghana. *Afr J Reprod Health.* 2003;7: 17–26.
- 1129 39. Mazigo HD, Samson A, Lambert VJ, Kosia AL, Ngoma DD, Murphy R, et al. “We know  
1130 about schistosomiasis but we know nothing about FGS”: a qualitative assessment of  
1131 knowledge gaps about female genital schistosomiasis among communities living in  
1132 *Schistosoma haematobium* endemic districts of Zanzibar and Northwestern Tanzania. *PLoS*  
1133 *Negl Trop Dis.* 2021;15: e0009789.

1134  
1135  
1136

1137

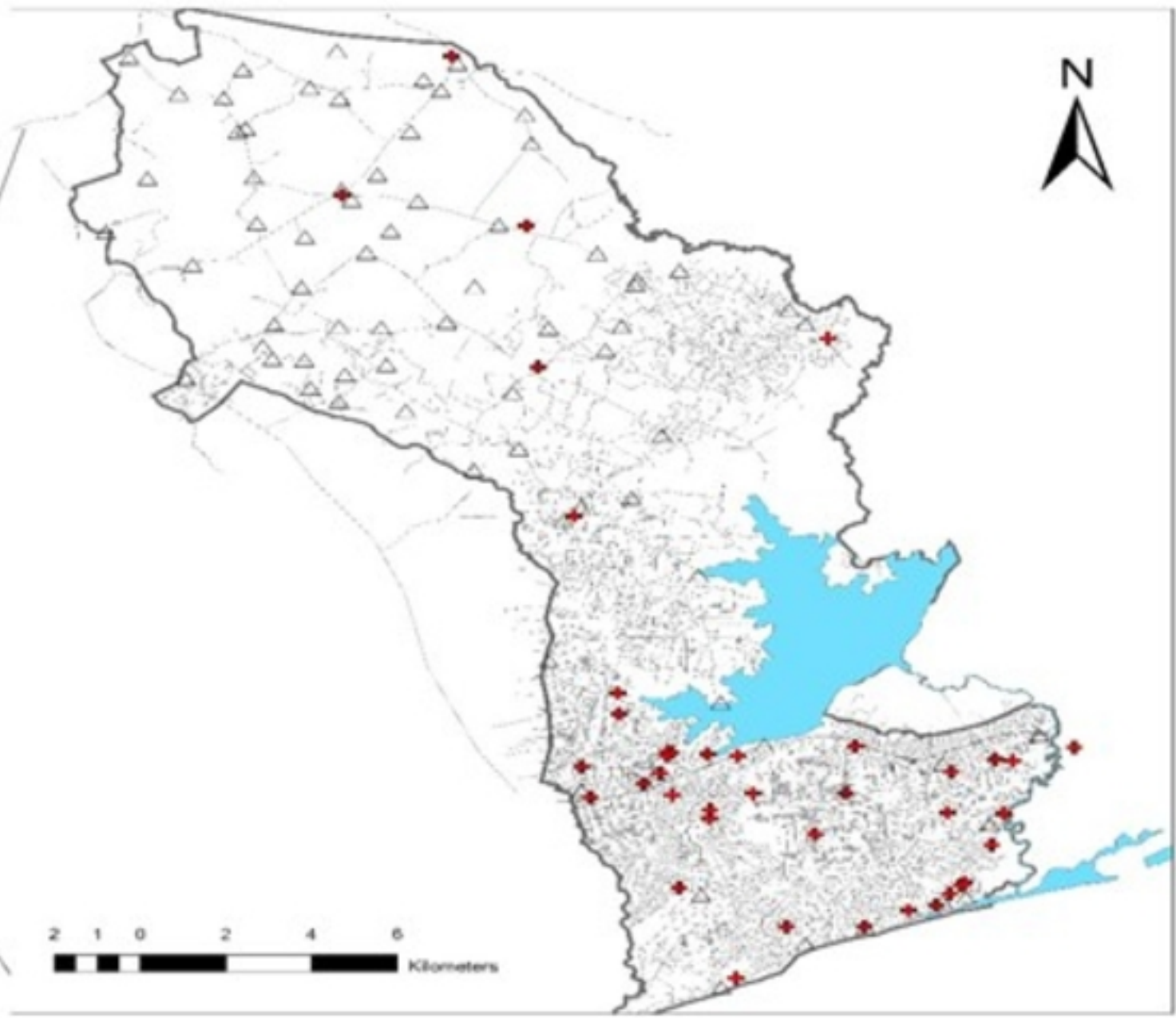
1138

1139

1140



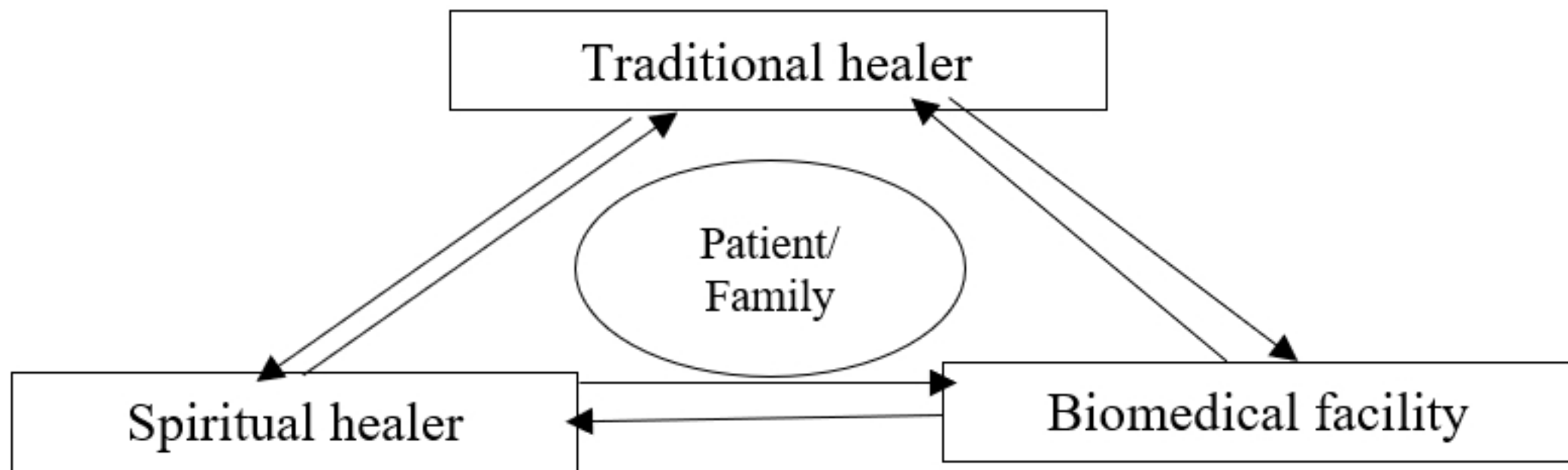
# COMMUNITIES AND HEALTH FACILITIES IN GA SOUTH DISTRICT



- Legend
- Health facilities
  - Communities
  - Roads
  - Water body



Figure



Figure