

1 **Type: research article**

2 **Title:** Climate Risks to Water, Sanitation and Hygiene Services and Evidence of Inclusive and Effective
3 Interventions in Low and Middle-Income Countries: A Scoping Review

4

5 **Short title:** Climate Risks to WASH and Inclusive Interventions in LMICs: A Scoping Review

6

7 **Authors:** Jane Wilbur, PhD*¹, Doug Ruuska², Shahpara Nawaz³, Julian Natukunda, PhD⁴

8

9 Corresponding author: Jane Wilbur, E: jane.wilbur@lshtm.ac.uk

10

11 **Affiliations:**

12 ¹International Centre for Evidence in Disability (ICED), London School of Hygiene & Tropical Medicine,
13 Keppel Street, London WCE 7HT, UK

14 ²World Vision, GPO Box 9944, Melbourne, VIC 3001. In person: 1 Vision Drive, Burwood East, VIC 3151.

15 ³Environmental Health and WASH Research group, ICDDR,B, 68 Shaheed Tajuddin Ahmed Sharani

16 Mohakhali, Dhaka 1212 (GPO Box 128, Dhaka 1000) Bangladesh

17 ⁴Nuffield Department of Medicine, Centre for Tropical Medicine and Global Health, University of Oxford

18

19 **Abstract**

20 People with disabilities face significant disparities in access to water, sanitation, and hygiene

21 (WASH) services, negatively affecting their health. Climate change exacerbates this by

22 damaging WASH infrastructure and disrupting behaviours. Despite their heightened

23 vulnerability, the needs of people with disabilities are often overlooked in climate change

24 response strategies, putting them at greater risk.

25

26 This study explored how climate change impacts WASH services and behaviours and
27 whether climate-resilient WASH interventions are disability-inclusive and gender-equitable
28 in low—and middle-income countries.

29

30 Nine online databases were searched in July 2023 and May 2024 to identify peer-reviewed
31 papers (CINAHL Complete, Embase, Global Health; Web of Science; ECONLIT; DESASTRES,
32 GreenFILE, MEDLINE via PubMed, ERIC - Education Resources Information Centre). Grey
33 literature was identified through OPENGrey, WHO, AHRQ, BASE and Google Scholar. Eligible
34 papers included data on the impact of weather or climate on WASH services and
35 behaviours, particularly for people with disabilities and women. Studies focused on
36 community-based WASH interventions in LMICs and were published between 2000 and
37 2023 in English.

38

39 Twenty-two studies were included. Thirteen included results about women and girls; two
40 considered disability. Only two evaluated climate-resilient WASH interventions (rainwater
41 harvesting), and neither focused on disability. Most studies examined rainfall uncertainty
42 and drought, covering diverse locations, including South Asia and East Africa. Most studies
43 were published after 2020. Results show that climate change is exacerbating WASH
44 inequalities, particularly affecting women and people with disabilities, while also adversely
45 impacting public health by disrupting water availability, quality, and sanitation services.
46 Variability in rainfall, droughts, floods, and saltwater intrusion significantly affect water
47 reliability, quantity, and quality, leading to increased waterborne diseases, mental health
48 issues, and other health problems. Social capital and kinship networks are critical during
49 water scarcity. People with disabilities are especially vulnerable, often relying on people

50 feeling morally obligated to support water collection. To cope, people diversify their water
51 sources and prioritise water use for agriculture and livelihood security over hygiene, which
52 elevates health risks. Extreme weather events further complicate the situation by damaging
53 sanitation facilities, leading to increased open defecation and the spread of diseases.
54 Rebuilding sanitation facilities is often deprioritised due to repeated damage, mental fatigue
55 of constant reconstruction, and immediate survival needs. Water is frequently prioritised for
56 agriculture over proper sanitation and hygiene practices, resulting in higher rates of open
57 defecation and declining hygiene, as water use for handwashing, cleaning utensils, laundry,
58 and menstrual hygiene is restricted. Consuming saline water is associated with high blood
59 pressure, hypertension, pre-eclampsia, and respiratory infections. Women and girls who
60 wash menstrual materials and bathe in saline water risk skin burns, rashes, blisters, and
61 urinary tract infections. The role of governments and service providers in facilitating
62 adaptation was inconsistent, with a lack of focus on community engagement and equitable
63 service delivery.

64

65 Climate change disproportionately impacts vulnerable populations' access to WASH
66 services. This review highlights the urgent need for research on climate-resilient WASH
67 interventions, especially those addressing the needs of people with disabilities. Targeted
68 support, sustainable management, and robust evidence are essential to building resilience
69 and equality.

70

71

72 Introduction

73

74 Access to water, sanitation, and hygiene (WASH) and related positive behaviours are
75 essential for maintaining health and overall well-being [1-3]. Handwashing with soap and
76 water can reduce acute respiratory infections—the world’s leading cause of morbidity and
77 mortality—by 17% [4]. Improving access to WASH reduces childhood mortality from any
78 cause by 17% and diarrhoea deaths by 45% [5]. Sanitation interventions can enhance quality
79 of life and prevent diseases. A study in unsewered, low-income areas of Maputo,
80 Mozambique, found that people who used ‘high-quality’ shared latrines reported higher
81 safety, privacy and mental health levels than users of ‘low-quality’ pit latrines [6]. High-
82 quality latrines had pour-flush systems, concrete structures, and lockable doors, while low-
83 quality ones had unlined pits and minimal privacy. Despite these physical and mental health
84 benefits, nearly one in five people globally lack safe sanitation, and almost one in ten do not
85 have access to safely managed water [7].

86

87 Inequalities within WASH access are marked. Individuals with disabilities often face limited
88 or lower-quality access to WASH services, leading to disproportionate adverse health
89 outcomes [8-11]. Despite often facing poorer access, many people with disabilities have a
90 greater need for WASH services than those without disabilities. This includes individuals
91 with health conditions like incontinence, epilepsy, albinism, and skin diseases, as well as
92 those who use orthotics, prostheses, or other assistive devices that require cleaning [12-17].

93

94 Globally, 1.3 billion people with disabilities worldwide are particularly vulnerable to climate
95 change effects [18, 19]. They are more likely to live in disaster-prone areas and are up to
96 four times more likely to die in a natural disaster compared to those without disabilities [18,

97 19]. This is partly caused by barriers to participating fully in public life, which impacts their
98 capacity to communicate their requirements and obtain crucial safety information during
99 extreme weather and disasters [20, 21]. Despite these risks, the needs of people with
100 disabilities are rarely considered in climate responses. A systematic review of climate
101 adaptation responses found that only 1% of the 1,680 articles reviewed considered people
102 with disabilities; the least attention given to all marginalised groups assessed [22].
103 Furthermore, 81% of State parties to the Paris Agreement did not mention disability in their
104 national plans, thus risking perpetuating existing inequalities [23].

105

106 The threats of climate change to WASH services and behaviours are increasingly
107 evident. Rising sea levels, extreme heat, altered precipitation patterns, flooding, and
108 cyclones disrupt water availability, quality, and demand. Surface water sources become less
109 predictable while groundwater demand surges. Flooded sanitation facilities contaminate
110 water and the environment, damaging WASH infrastructure like water points, latrines, and
111 sewerage systems [6, 24-26]. These disruptions directly impact WASH behaviours: people
112 may resort to coping mechanisms that include open defecation, unsafe water consumption,
113 and long, often difficult journeys to collect water, especially in extreme heat. Menstrual
114 health, handwashing, and personal hygiene practices decline, increasing health risks [27,
115 28]. People with disabilities, already facing significant barriers to WASH services, become
116 even more vulnerable to the adverse health effects of climate change-induced WASH
117 disruptions, potentially leading to severe health and social consequences.

118

119 This scoping review aimed to explore how climate change impacts WASH services and
120 behaviours and if climate-resilient WASH interventions are disability-inclusive and gender-
121 equitable in low and middle-income countries (LMICs). The research questions were: 1)
122 What is the evidence that climate risks (including weather events) affect women and men
123 with disabilities' physical and mental health and well-being through disruption of WASH?
124 and 2) What is the evidence for the effectiveness of climate-resilient WASH interventions in
125 LMICS?

126

127 WASH interventions are defined as individual, household or community activities that
128 promote health through effective hygiene behaviours. As set out in the UN Human Rights to
129 Water and Sanitation, interventions should improve the availability of water and sanitation
130 facilities, quality, acceptability, accessibility and affordability [29]. Positive sanitation
131 behaviours include building a latrine and stopping open defecation. Effective hygiene
132 behaviours involve hand hygiene, menstrual health, food hygiene, personal care and safe
133 water collection and storage practices that help maintain health and prevent disease
134 spread. Persons with disabilities are 'those who have long-term physical, mental, intellectual
135 or sensory impairments which in interaction with various barriers may hinder their full and
136 effective participation in society on an equal basis with others' [30]

137

138 Climate-resilient WASH is less clearly defined. We include any WASH programming that
139 helps ensure that WASH infrastructure, services and behaviours are sustainable and resilient
140 to human-induced climate change, including more intense and frequent weather events
141 [31].

142

143 Achieving climate-resilient WASH necessitates a comprehensive, collaborative approach
144 involving all stakeholders. This includes marginalised groups such as persons with
145 disabilities, women, and girls, as well as households, communities, government entities at
146 all levels, service providers, and regulators. By working together, these stakeholders can
147 effectively identify, assess, and mitigate the risks posed by climate-related events to WASH
148 services and the broader systems that support them. By fostering collaboration, climate-
149 resilient WASH not only safeguards essential services but also plays a pivotal role in
150 strengthening overall community resilience to the impacts of climate change [32].

151 **Materials and Methods**

152 Scoping reviews are conducted when evidence has not yet been reviewed or is
153 heterogeneous. They aim to identify and map the existing evidence on a topic of interest,
154 identify and analyse knowledge gaps, and proceed with a systematic review [33-35]. This
155 scoping review follows Peters, M. et al.'s guidance for conducting systematic scoping
156 reviews [35]. A review protocol was registered online with OSF Registries
157 (<https://doi.org/10.17605/OSF.IO/SZCGB>) and is reported in line with the PRISMA Extension
158 for scoping reviews (S1, PRISMA checklist).

159 **Eligibility criteria**

160 The search strategy was designed to identify peer-reviewed and grey literature of primary
161 research that explored climate risks to WASH for people with disabilities in low- and middle-
162 income countries. Eligible participants were women, girls, men and boys with and without
163 disabilities. Studies were included if they met the following criteria:

- 164 1) Peer-reviewed and grey literature, including observational studies, case studies and
165 reports that include primary data and reviews.

- 166 2) Studies that reported weather or climate impacts on WASH services and behaviours,
167 including those disaggregated by disability and/or gender.
- 168 3) Papers that assessed the effectiveness of climate-resilient WASH interventions in
169 community settings, defined as WASH services shared by households (e.g. shared
170 handpumps/latrines) and within individual households.
- 171 4) No restrictions were placed on study design and included rapid reviews, process and
172 outcome evaluations, feasibility studies and case studies or reports.
- 173 5) Studies undertaken in LMICs as defined by the World Bank country classification
174 [36].
- 175 6) Papers published between 2000 and 2023 and written in English.

176 Studies were excluded if they:

- 177 • Did not address WASH services shared by households (such as urban systems or
178 watershed studies).
- 179 • Focused on WASH services for people in temporary accommodation following a
180 disaster, including displacement camps
- 181 • Reported flood events unrelated to the weather, such as dam bursts or tsunamis

182

183 [Information sources](#)

184 Nine online databases were searched: *CINAHL Complete*, *Embase*, Global Health; Web of
185 Science; *ECONLIT*; *DESASTRES*, GreenFILE, MEDLINE via PubMed, and ERIC (Education
186 Resources Information Centre). Grey literature was searched using OPENGrey, WHO, AHRQ,
187 BASE and Google Scholar. Comprehensive search terms were created to capture four main
188 concepts: weather or climate events, WASH, effectiveness, and disability (S2 Search strategy

189 and key terms). Final search strings were peer-reviewed by academics experienced in the
190 topics and the London School of Hygiene & Tropical Medicine (LSHTM) librarians.

191

192 [Study selection](#)

193 The search was conducted in July 2023 and rerun in May 2024. Different search strategy
194 formulas were finalised to answer the two research questions. The first research question
195 formula was: (Weather events terms) AND (WASH terms) AND (Evaluation terms) AND (time
196 restriction 2000 to 2023) AND (restriction by English language). The second was: (Weather
197 events terms) AND (WASH terms) AND (Disability) AND (time restriction 2000 to 2023) AND
198 (restriction by English language). When an included article summarised findings from
199 multiple primary studies, we manually searched for individual publications. Results were
200 exported to EndNote X9 for de-duplication and then imported to Rayyan [37] for screening.
201 One reviewer screened the titles, while the abstract and full-text screening process was
202 blinded and conducted independently by all three reviewers. Any disagreements were
203 discussed and agreed upon by all reviewers.

204

205 [Data extraction and analysis](#)

206 The following data were extracted into Microsoft Excel for analysis: country, aims/purpose,
207 study population and sample size, methods, intervention type, concept, duration of the
208 intervention, how outcomes were measured, and key findings related to the review
209 questions. Due to the heterogeneous nature of the evidence gathered, applying a
210 standardised reference scale to assess quality was impossible. This approach corresponds
211 with guidance for conducting systematic scoping reviews, which states that, unlike
212 systematic reviews, scoping reviews rarely formally evaluate the methodological quality of
213 included papers [34, 35].

214 **Results**

215

216 **Study selection**

217 Twenty-two studies met our inclusion criteria (Figure 1 PRISMA flowchart). 1265 records

218 were identified through electronic searches. After removing duplicates (n=333), 824 records

219 were excluded during the title and abstract screen, leaving 108 studies for the full-text

220 screen. Following a full-text review, 86 studies were excluded, and 22 were selected for

221 inclusion.

222

223 *Fig 1. A PRISMA flow chart diagram*

224

225

226 **Study characteristics**

227 We did not find any studies that evaluated disability-inclusive climate-resilient WASH

228 interventions, and there were minimal evaluations of climate-resilient WASH at the

229 community or household level (n=2). There was more evidence regarding the health impacts

230 and lived experiences of persons dealing with climate-driven water insecurity or damage to

231 WASH infrastructure from weather and climate extremes (n=20). The types of climate

232 hazards considered were predominantly rainfall uncertainty and drought (n=19). Papers

233 were from a wide range of countries, with South Asia and East Africa most represented

234 regions. There was an even distribution between rural and urban settings. Most papers

235 (n=18) were published between 2020 and 2023.

236

237 **Weather events and impacts on health, WASH services and** 238 **behaviours**

239

240 Most papers documented low rainfall and drought, followed by heavy rain and flooding.

241 Most studies addressed the impact of weather events on water services alone (n=6), and

242 then equal attention was given to water and sanitation (n=5), water and hygiene (n=5), and
243 water, sanitation, and hygiene (n=5). The fewest papers considered sanitation and hygiene
244 together (n=1). Of the 22 papers, 13 included results about women and girls, and only two
245 considered persons with disabilities.

246

247 Table 1 summarises studies that report how climate hazards impact population health and
248 the coping strategies applied by the general population, women, girls, and people with
249 disabilities. Coping strategies do not necessarily result in positive health outcomes. For
250 instance, a coping strategy applied during water scarcity could be reducing handwashing,
251 which could lead to increased infectious diseases.

252 *Table 1. Summary of studies on impacts of climate hazards on WASH*

253

254 Rainfall uncertainty and drought

255 Papers reported that rainfall uncertainty and drought affect water availability's reliability,
256 quantity, and quality [38-47]. People responded by diversifying their water sources,
257 including collecting water from rivers, rainwater, shallow wells, and vendors [46-48]. Some
258 people requested water loans and borrowed or begged for water from neighbours [46, 48].
259

260 Bukachi et al. [49] highlighted the importance of social capital and kinship in facilitating
261 water-sharing, subsidisation, or reciprocity between families, with gender dictating roles.
262 Men identified a water source for the family, utilising their networks, friendships,
263 neighbours and family relations, and women collected it and, or worked in exchange for
264 water. People with disabilities who could not independently collect enough water relied on
265 the moral obligation within social networks of friends, neighbours and the church for their
266 water. People with disabilities were not expected to provide a service in return.

267

268 Drinking untreated rain and surface water was reported [46, 48]. Still, papers predominantly
269 highlighted that households prioritised water for food and livelihood security above
270 personal and food hygiene, such as handwashing, doing laundry, cleaning plates and baby
271 feeding instruments [40, 44, 48, 50]. Studies reported a shift from using water for anal
272 cleansing to paper, wood, mud and pebbles [40, 51].

273

274 Studies focusing on rainfall uncertainty and drought reported health impacts, including
275 diarrhoea, abdominal pain, headache, dehydration, intestinal worms, and psychological
276 stress [41, 45-48, 52]. Waterborne diseases, dehydration, and headaches were reported and
277 linked to consuming contaminated water [45, 48, 52]. Declining mental health due to rainfall
278 uncertainty and drought was reported in several papers. For instance, in Bolivia, household
279 heads experienced worry, anger and fear because of water insecurity, which led to
280 arguments [48]. Regarding gender roles, women's burden increased during water shortages
281 as they had to manage available water for cooking, cleaning, laundry, and the kitchen
282 garden [51]. Women were particularly affected by the constant fear of water shortages [45].
283 One paper reported that men and women travelled further to collect water [38]. Still, most

284 reported this role was carried out by women and girls who spent longer collecting water,
285 covering greater distances, spending time in longer queues and making multiple trips [40,
286 52-54]. Women and girls faced harassment when collecting water, perpetrated by men,
287 boys and other women queuing for water [40, 53, 54]. In South Punjab, Pakistan, water
288 insecurity increased women's and girls' vulnerability to harassment and gender and caste-
289 based violence, including sextortion [40]. Women were more stressed and lethargic,
290 especially when sick or menstruating; dehydration was common, and lactating mothers
291 were less able to produce milk in sufficient quantities, shortening breastfeeding [40].

292

293 **Increased rainfall, flooding and cyclones**

294 Heavy rainfall events and flooding led to wells collapsing [42-44, 55] and carrying built-up
295 bacteria and other harmful organisms (pathogens) directly into surface water used for
296 drinking and bathing [43, 56, 57]. This was particularly concentrated when dry periods,
297 during which pathogens had built up in the environment, were followed by heavy rainfall,
298 resulting in a significantly increased risk of E. coli in water and diarrhoea transmission [43,
299 57].

300

301 Some people treat drinking water by filtering and boiling it, using solar water disinfection,
302 and adding chlorine [43, 44, 54, 57]. Other coping strategies include paying for drinking
303 water and storing and recycling water. The most common approach was constructing
304 rainwater harvesting systems at homes, used for drinking (if treated), bathing, laundry and
305 cooking [44, 58].

306

307 Six papers reported that heavy rains, flooding, and cyclones damaged latrine infrastructure,
308 waterlogging and overflowing latrines and drainage systems [38, 39, 44, 51, 54, 58]. For
309 instance, Marcus highlighted how heavy rains lead to pit latrine damage and collapse in
310 Kenya's Lake Victoria Basin [44]. In Rio de Janeiro, Libertun de Duren et al. found that
311 sewerage systems overflowed during heavy rains, but this was also caused by population
312 growth overtaking the capacity of the sanitation system [59]. In Cox's Bazar, Bangladesh,
313 Mitu et al. reported that heavy rains, flash floods, and landslides caused waterlogging as
314 drainage systems were not regularly cleared [58]. The authors also noted that adolescents
315 with disabilities living in long-term Rohingya refugee settlements faced additional challenges

316 reaching latrines because heavy rains damaged roads and paths [58]. Nuzhat et al. noted
317 that women did not want to use damaged latrines that were dark and lacked privacy [39].

318

319 Many latrines were often damaged from previous weather events, so they could not
320 withstand the latest incident [39, 51]. Sanitation was deprioritised for several reasons: 1)
321 the recurring need to rebuild damaged latrines, causing mental fatigue and related costs
322 after a weather event; 2) the inability to reach the local market to buy materials to rebuild
323 the latrine because the roads are damaged by floods, 3) a focus on rebuilding the
324 homestead or food and livelihood security [39, 51]. Studies reported continued use of
325 unhygienic latrines [38, 39], increased rates of open defecation [39], using neighbours'
326 latrines, or a combination of the latter two options [51]. Due to impacts on sanitation
327 services and behaviours, increased waterborne diseases, including diarrhoea and skin
328 conditions, were reported [39, 54].

329

330 Some adaptation activities were documented [39, 44, 51]. People in Kenya built ditches and
331 dams around houses for flood control, saved for latrine reconstruction ahead of the rainy
332 season, constructed latrines in higher ground to increase resistance to flooding, and planted
333 trees in household yards to improve soil water retention [44]. In Burkina Faso, some people
334 built storm and flood defences around their homesteads for protection [51]. Following
335 damage, those who could afford to build stronger, more flood-proof latrines used more
336 durable materials such as cement, strong pit liners, and concrete slabs; some relocated
337 latrines to higher ground or raised the height of the latrine plinths above flood levels [39,
338 44, 51].

339

340 Nuzhat et al. [39] included information about how heavy rainfall, flooding and cyclones
341 impacted the ability of women and girls to manage menstruation. Damage to latrines
342 affected people's ability to change their menstrual materials in private, and heavy rains and
343 flooding made it difficult to clean and dry reusable materials. Many people evacuated their
344 homes without menstrual materials. They could not buy replacements as shops were closed
345 during the weather event, and cyclone shelters lacked adequate water, sanitation and
346 hygiene services to facilitate menstrual health.

347

348 Climate change-induced sea level rise and saltwater intrusion

349 Climate change-induced sea level rise and saltwater intrusion in freshwater

350 was documented in three papers [38, 39, 42]. One study reported how high salinity affected

351 sanitation service durability [39]. Households that could afford it constructed latrines'

352 infrastructure with concrete and installed ceramic or porcelain tiles on top [39].

353

354 All papers documented saline intrusion in groundwater, shallow wells and surface water in

355 subtropical and tropical floodplain rivers, coastal rivers, and oceanic islands [38, 39, 42]. In

356 Bangladesh, this reduced water for drinking, cooking and agriculture all year round [38, 39].

357 Regarding water, coping mechanisms applied included using multiple water sources,

358 including deep tubewells, handpumps, shallow wells, rainwater harvesting, and surface

359 water (rivers and ponds). Most households used rainwater to drink for two to three months

360 a year and then shifted to salinated pond water [38]. The pond water was primarily used for

361 cooking; some used community-level pond sand filtration. Those who could afford it bought

362 water from Reverse Osmosis plants or installed piped water in their homes [38, 39, 60].

363 However, many people had to consume highly saline water [38, 39].

364

365 Health impacts of consuming highly saline water reported were high blood pressure,

366 increased rates of hypertension, pre-eclampsia and respiratory infections [38]. Women and

367 girls who bathed in and washed reusable menstrual materials in water with high saline

368 content reported burns, rashes, blisters, and urinary tract infections [39]. Finally, high

369 salinity in Bangladesh has changed livelihood practices. Previously, crop cultivation was

370 common, but this is no longer a viable option because saltwater intrusion reduced soil

371 fertility. Now, many people farm shrimp, but this further increases groundwater salinity

372 [39]. Furthermore, many farmers cannot afford modern irrigation technologies, so they

373 consume significant volumes of ground and surface water.

374

375 **Effectiveness of climate-resilient WASH at the household and** 376 **community levels**

377 There is minimal evidence regarding the effectiveness of climate-resilient WASH services at
378 the household and community levels. Only two papers explored this and focused on
379 rainwater harvesting technology (Table 2). No papers explored efforts to maintain positive
380 WASH behaviours (e.g. safe water management, handwashing with soap and water at
381 critical times, faecal management and disposal, food hygiene and menstrual hygiene)
382 before, during or after a climatic event.

383 *Table 2. Studies on the effectiveness of climate-resilient WASH*

384
385 Elgert et al. [53] explored whether household rainwater harvesting improved water security
386 (quantity, quality and access) in 12 households in a Guatemalan peri-urban village and the
387 potential to expand this approach regionally and beyond. Glasgow et al. [46] assessed
388 respondents' knowledge, attitudes and practices using household rainwater harvesting
389 systems in 20 homes in Carricoao in Grenada.

390
391 Both studies reported increased water quantity. Respondents in Elgert's study noted using
392 rainwater for almost six months of the year, meaning family members (primarily women)
393 reduced the number of trips made to the public water points compared to those without
394 the rainwater harvesting system. Half of the participants in Glasgow et al.'s study reported
395 water availability throughout the year. In Guatemala, rainwater was primarily used for
396 drinking and cooking, whilst laundry was done at public water points to conserve rainwater
397 [53]. In Carricoao, respondents used rainwater for drinking, cooking, bathing, laundry and

398 cleaning [46]. Individual household water treatment practices were not gathered in Elgert et
399 al.'s study, but the authors recommended boiling water before consumption. Respondents
400 in Glasgow et al.'s sample reported that just over half treated water before drinking by
401 adding bleach chlorine tablets and using small fish to consume insects. No data on water-
402 related or borne diseases was gathered in either study.

403

404 Both studies concluded that rainwater harvesting systems could increase water security but
405 that regular operation and maintenance of the system is critical; additionally, Glasgow et al.
406 highlighted the importance of educational campaigns to improve water treatment practices
407 before consumption.

408

409 **Role of the government and service providers**

410 Nine papers mentioned government and service providers (non-government organisations
411 and urban utilities) [38-40, 43, 47, 51, 53, 56, 60]. No papers included data about water user
412 groups or committees. Nayebare et al. [43] set out the government's roles and
413 responsibilities but provide no other information. Five of these papers detail the technology
414 the government and service providers install or subsidise to increase water quantity and
415 quality and, therefore, resilience to weather events [38, 39, 53, 56, 60]. These include
416 household rainwater harvesting in Guatemala [53], chlorinated piped water in Dar es
417 Salaam [56], pond sand filtration, reverse osmosis, household rainwater harvesting, deep
418 tubewells with overhead water storage, and the provision drinking water in 10-40 litre
419 containers in Bangladesh [38, 39, 60]. Ahmed et al. [40] report perceptions of government
420 mismanagement of the water supply. Ashrafuzzaman and Furini [38] indicated that

421 governments and NGOs rarely delivered pond sand filtration in collaboration with
422 community members in remote rural areas. Iyer and Toe [51] highlight that funding from
423 the local government for sanitation is insufficient, leading to the construction of makeshift
424 latrines that are easily damaged in weather events. Nor do they provide funding for
425 retrofitting damaged latrines.

426

427 **Discussion**

428

429 We aimed to explore how climate change impacts WASH services and behaviours and if
430 climate-resilient WASH interventions are disability-inclusive and gender-equitable in LMICs.
431 The findings underscore how vulnerable WASH services and behaviours are to climate
432 change. Studies included evidence about how the changing climate impacts WASH services
433 and behaviours. However, we identified a significant gap in epidemiological research linking
434 these impacts to specific health outcomes. Furthermore, we found a dearth of evidence
435 related to the experiences of people with disabilities. More data was found regarding
436 women and girls, and some considered how climate impacts gender relations. Notably, the
437 review identified a scarcity of evidence regarding the effectiveness of climate-resilient
438 WASH interventions at the household and community levels. Only two studies explored
439 rainwater harvesting systems, highlighting the need for further research on effective
440 adaptation strategies.

441

442 No previous reviews have been conducted on this topic, yet we found only 22 papers that
443 met our inclusion criteria, demonstrating that this is an emerging work area. Rainfall
444 uncertainty, drought, increased rainfall and flooding were the most commonly documented
445 weather events in the studies. Though most papers examined the effects on various aspects

446 of water access, the split across water, sanitation and hygiene was marginal. This
447 demonstrates the recognition that, holistically, water, sanitation, and hygiene services and
448 behaviours contribute to maintaining public health during weather events.

449

450 Although the impacts on women and girls were present in over half the studies, evidence
451 related to people with disabilities remains scarce. This pattern is observed in studies that
452 assessed disability inclusion in WASH-related policies in Nepal, Bangladesh, and Cambodia
453 compared to gender [61, 62]. Across all countries, attention to disability was considerably
454 less than to gender. Both populations are vulnerable to the risks of climate change, so
455 studies relating to these populations must be equally increased. As identities intersect to
456 deepen poverty and marginalisation, attention must also be given to women and girls with
457 disabilities in future studies.

458

459 Furthermore, where disability is mentioned, the population was referred to as a
460 homogenous group without reference to the impairment experienced or gender [49], or the
461 emphasis was on physically accessing the WASH service for persons with sensory or physical
462 disabilities [58]. A steadily growing body of evidence has marked the importance of
463 understanding how intersecting identities shape WASH experiences [11, 63, 64]. These
464 report the nuanced barriers faced by women and men with disabilities of different ages
465 across the different impairment groups when accessing WASH services, which makes
466 designing appropriate solutions more feasible [8]. This must now include climate change
467 WASH service adaptation and resilience efforts.

468

469 Our review paints a concerning picture of the impact of extreme weather events on water
470 usage, sanitation and hygiene behaviours, and health outcomes. Across all weather events,
471 many people resorted to consuming untreated water, diversifying water sources and using
472 them for different purposes (e.g. rain or pond water for cooking and personal hygiene).
473 These are common coping strategies in many LMIC settings [6, 65, 66]. It is recognised that
474 having access to diverse water sources increases climate resilience. However, the focus
475 must be on having access to diverse water sources of good quality and close proximity [67].

476

477 Our review also highlights the importance of social capital and kinship networks during
478 water scarcity. However, people with disabilities are particularly vulnerable during droughts,
479 as they often rely on social networks' moral obligation to collect water. Arguably, this could
480 decline as the situation worsens for everyone. Such vulnerability to more significant
481 inequalities underscores the need for targeted support mechanisms to ensure access to
482 water for persons with disabilities during droughts.

483

484 Kinship and social capital have always been important in distributing finite resources, but
485 the latter has been identified as a potential strategy to build resilience to climate change
486 [68, 69]. While social capital is crucial for immediate survival, further research is needed to
487 understand its broader effects on climate change adaptation. More effective strategies to
488 support communities during droughts can be designed by understanding these coping
489 mechanisms and their limitations. These include promoting sustainable water management
490 practices, bolstering social support networks, and ensuring targeted assistance for
491 populations that are vulnerable to exclusion.

492

493 A key finding from this review is that households prioritised water for agriculture and
494 livelihood security over good sanitation and hygiene practices. This prioritisation leads to
495 increased rates of open defecation in most settings and a decline in hygiene as households
496 limit water use for activities like handwashing, utensil cleaning, laundry, and menstrual
497 health and hygiene. Critically, we found no data on the menstrual health experiences of
498 women and girls with disabilities. While growing evidence underscores the importance of
499 menstrual health for all women and girls, including in humanitarian crises, the intersection
500 of menstrual health, disability and climate change is unexplored [70-75]. To effectively
501 address menstrual health challenges exacerbated by climate change, it is imperative to
502 consider the unique requirements of women and girls with disabilities and caregivers who
503 support them. Failure to do so will only deepen existing menstrual health inequalities.

504

505 Increased rates of illness reported across different settings include diarrhoea, abdominal
506 pain, headache, dehydration, intestinal worms (rainfall uncertainty and drought, increased
507 rainfall, flooding, and cyclones), high blood pressure, hypertension, respiratory infection,
508 pre-eclampsia, rashes, and urinary tract infections (climate change-induced sea level rise
509 and saltwater intrusion). Diarrhoea disease is the second leading cause of death and the
510 leading cause of malnutrition in children under five years old [76]. There are significant
511 disparities in severe diarrhoea rates, with children under five with disabilities experiencing
512 twice the rate as those without disabilities in the same age group [9, 77]. However, none of
513 the reviewed papers reporting increased diarrhoea rates considered disability—a major
514 oversight given the health inequalities faced by people with disabilities. Diarrhoea is
515 treatable and preventable. A recent systematic review found that community-wide
516 sanitation prevents the spread of diarrhoea [5], and handwashing with soap reduces

517 diarrhoeal disease by 30% [2, 4]. With human-induced climate change causing more intense
518 and extreme weather events [31], it is now more vital than ever to invest climate finance
519 into increasing access to WASH services that are resilient to weather events and developing
520 and maintaining positive WASH behaviours.

521

522 Declining mental health and wellbeing also came out in our results. This chimes with the
523 expanding evidence on climate change and mental health: a scoping review by Charlson et
524 al. [78] reported that climate-related exposures, including increased rainfall, drought and
525 floods, were linked to poor mental health outcomes, including increased
526 distress, hospitalisations, and suicide rates, especially for those with pre-existing mental
527 health conditions. Wahid et al. [79] explored the association between climate-related
528 shocks and depression in Bangladesh. The authors found that exposure to floods in the last
529 year was associated with depression and anxiety, and the odds were significantly higher for
530 people with physical disabilities than those without disabilities. Our review did not uncover
531 any further data related to disability and mental health, so more research is required to
532 understand the intersection between disability, climate change, and mental health.

533

534 Much evidence exists about the connections between safely managed WASH and gender
535 equality. Women and girls are more likely to collect water, which impacts time spent in
536 school or at work [7]. Collecting water is associated with stress, fatigue, pain, perinatal
537 health problems and vulnerability to violence, including sextortion [80-84]. Our review
538 shows how changing weather events will likely exacerbate these issues. Furthermore,
539 papers in our review indicate that water scarcity negatively impacted lactating

540 mothers, leading to dehydration and decreased milk production. Though evidence exists,
541 Miller et al. [85] note that a more rigorous exploration of the issues is required.

542

543 In our review, climate change adaptation activities aimed at reducing vulnerability to the
544 present and future impacts of climate change include pond sand filtration, Reverse Osmosis,
545 buying water and installing piped water, protecting homesteads with flood defences,
546 constructing latrines on higher ground and constructing latrines with more durable
547 materials. Yet, affordability was a major barrier for many people, highlighting the need for
548 financial and social safety nets to ensure equitable access to these critical WASH
549 interventions. Such efforts must specifically target persons with disabilities because this
550 population often experiences greater poverty than those without disabilities. A recent study
551 using the global Multidimensional Poverty Index found that in 45% of the countries studied,
552 households with persons with disabilities face higher levels of poverty than those without
553 [86].

554

555 Only two papers included assessments of climate-resilient WASH services, and both focused
556 on rainwater harvesting, a technique that has been applied for generations. Though both
557 studies demonstrate its potential to increase water quantity, water treatment was limited,
558 and neither study examines waterborne disease prevalence or developing and maintaining
559 WASH behaviours, which presents an evidence gap. Evaluations of climate-resilient WASH
560 services should comprehensively assess the technology employed, user behaviours, the
561 effectiveness of system maintenance practices, and historical rainfall data incorporating
562 long-term trends [87].

563

564 A recent study investigating the impact of seasonal rain patterns and extreme weather
565 events on household water security in rural Gambia highlighted potentially climate-resilient
566 WASH infrastructure, including solar-powered boreholes [66]. Though users reported less
567 vulnerability to water sources, households faced shortages during the rainy season with
568 greater cloud coverage. The complex interplay between mechanical failures, weather events
569 and agricultural practices contributed to water insecurity.

570

571 However, evaluating WASH technologies will not suffice; we must understand the
572 effectiveness of increasing and sustaining positive WASH behaviours and develop
573 transformative approaches that tackle deeper social and economic issues to achieve climate
574 justice and inclusion. A key aspect of climate-resilient WASH is a population's ability to
575 absorb and recover from weather events, making the efforts of governments, service
576 providers, and communities to increase resilience vital. Unfortunately, minimal data exists
577 related to these efforts. We hypothesize that activities are occurring but have not yet been
578 evaluated and published. Therefore, scientific evaluations of interventions aimed at
579 increasing climate-resilient WASH are urgently required to determine what components
580 successfully enhance the resilience of persons with disabilities to weather events that
581 impact their WASH experiences. This proposal aligns with a recommendation from a
582 recently published review on disability and WASH, which outlines a roadmap for
583 progressively realising the rights of persons with disabilities to WASH by 2030 [8](page 8).

584

585 **Strengths and limitations of review**

586

587 Our search for studies on WASH and disability was thorough, but limitations may

588 exist. Qualitative studies, especially those without explicitly mentioning disability in the title

589 or abstract, could have been missed. Additionally, the relatively new field of climate-
590 resilient WASH might have resulted in overlooking relevant evaluations due to a lack of
591 standardised terminology. This highlights the need for a clearer definition of climate-
592 resilient WASH to facilitate future research and ensure all pertinent studies are captured.

593

594 **Conclusion**

595

596

597 This review underscores the critical intersection between climate change and WASH
598 services, highlighting the disproportionate impact on vulnerable populations, especially
599 people with disabilities, women, and girls. Our findings reveal a significant gap in
600 understanding the health consequences of climate-related WASH disruptions, particularly
601 for people with disabilities. The review identifies a pressing need for more comprehensive
602 studies on effective climate-resilient WASH interventions at the household and community
603 levels. The prioritisation of water for agriculture over sanitation and hygiene, coupled with
604 the coping mechanisms employed during extreme weather events, underscores the complex
605 challenges communities face. The review underscores the need for targeted support
606 mechanisms, sustainable water management practices, and financial and social safety nets
607 to ensure equitable access to WASH services. Substantial efforts are needed to expand the
608 evidence base. This includes rigorous evaluations of climate-resilient WASH technologies
609 and transformative approaches that address underlying social and economic issues. By
610 prioritising inclusive and effective WASH interventions, we can enhance climate resilience
611 and promote health equity for all, particularly the most vulnerable populations.

612

613

614

615 **Funding**

616 This study was supported by funding from the Australian Government, Department of
617 Foreign Affairs and Trade's Water for Women Fund (grant number: CR01), under the project
618 'Inclusive pathways to climate-resilient WASH in Bangladesh.'

619

620

621 **Acknowledgements**

622 Thank you to Sabiha Ahmed and Mahbub Ul Alam for contributing to the broader research
623 exploring how human-induced climate change impacts people with disabilities' WASH
624 experiences in Bangladesh.

625

626 **Authors contribution**

627

628 Conceptualization: Jane Wilbur, Julian Natukunda

629 Data curation: Jane Wilbur, Julian Natukunda

630 Funding acquisition: Jane Wilbur

631 Investigation: Julian Natukunda, Jane Wilbur

632 Methodology: Julian Natukunda, Jane Wilbur

633 Project administration: Jane Wilbur

634 Supervision: Jane Wilbur

635 Writing – original draft preparation: Jane Wilbur

636 Writing – review & editing: Jane Wilbur, Julian Natukunda, Doug Ruuska, Shahpara Nawaz

637 **References**

638

- 639 1. Bartram J, Cairncross S. Hygiene, Sanitation, and Water: Forgotten Foundations of Health.
640 PLoS medicine. 2010;7(11):e1000367. doi: 10.1371/journal.pmed.1000367.
- 641 2. Wolf J, Hubbard S, Brauer M, Ambelu A, Arnold BF, Bain R, et al. Effectiveness of
642 interventions to improve drinking water, sanitation, and handwashing with soap on risk of diarrhoeal
643 disease in children in low-income and middle-income settings: a systematic review and meta-
644 analysis. *The Lancet*. 2022;400(10345):48-59. doi: 10.1016/S0140-6736(22)00937-0.
- 645 3. Wolf J, Johnston RB, Ambelu A, Arnold BF, Bain R, Brauer M, et al. Burden of disease
646 attributable to unsafe drinking water, sanitation, and hygiene in domestic settings: a global analysis
647 for selected adverse health outcomes. *The Lancet*. 2023;401(10393):2060-71. doi:
648 [https://doi.org/10.1016/S0140-6736\(23\)00458-0](https://doi.org/10.1016/S0140-6736(23)00458-0).
- 649 4. Ross I, Bick S, Ayieko P, Dreibelbis R, Wolf J, Freeman MC, et al. Effectiveness of
650 handwashing with soap for preventing acute respiratory infections in low-income and middle-
651 income countries: a systematic review and meta-analysis. *The Lancet*. 2023;401(10389):1681-90.
652 doi: 10.1016/S0140-6736(23)00021-1.
- 653 5. Sharma Waddington H, Masset E, Bick S, Cairncross S. Impact on childhood mortality of
654 interventions to improve drinking water, sanitation, and hygiene (WASH) to households: Systematic
655 review and meta-analysis. *PLoS medicine*. 2023;20(4):e1004215. doi:
656 10.1371/journal.pmed.1004215.
- 657 6. Howard G, Calow R, Macdonald A, Bartram J. Climate Change and Water and Sanitation:
658 Likely Impacts and Emerging Trends for Action. *Annual Review of Environment and Resources*.
659 2016;41(1):253-76. doi: 10.1146/annurev-enviro-110615-085856.
- 660 7. United Nations Children's Fund (UNICEF), World Health Organization (WHO). Progress on
661 household drinking water, sanitation and hygiene 2000-2022: special focus on gender. New York,
662 USA: 2023.
- 663 8. Wilbur J, Dreibelbis R, Mactaggart I. Addressing water, sanitation and hygiene inequalities: A
664 review of evidence, gaps, and recommendations for disability-inclusive WASH by 2030. *PLOS Water*.
665 2024;3(6):e0000257. doi: 10.1371/journal.pwat.0000257.
- 666 9. Mactaggart I, Schmidt W-P, Bostoen K, Chunga J, Danquah L, Halder AK, et al. Access to
667 water and sanitation among people with disabilities: results from cross-sectional surveys in
668 Bangladesh, Cameroon, India and Malawi. *BMJ Open*. 2018;8(6):e020077. doi: 10.1136/bmjopen-
669 2017-020077.
- 670 10. Banks LM, White S, Biran A, Wilbur J, Neupane S, Neupane S, et al. Are current approaches
671 for measuring access to clean water and sanitation inclusive of people with disabilities? Comparison
672 of individual- and household-level access between people with and without disabilities in the
673 Tanahun district of Nepal. *PLOS ONE*. 2019;14(10):e0223557. doi: 10.1371/journal.pone.0223557.
- 674 11. Mactaggart I, Baker S, Bamberg L, Iakavai J, Kim MJ, Morrison C, et al. Water, women and
675 disability: Using mixed-methods to support inclusive wash programme design in Vanuatu. *The Lancet*
676 *Regional Health - Western Pacific*. 2021;8:100109. doi:
677 <https://doi.org/10.1016/j.lanwpc.2021.100109>.
- 678 12. Kanda N, Hoashi T, Saeki H. Nutrition and Psoriasis. *International Journal of Molecular*
679 *Sciences [Internet]*. 2020; 21(15).
- 680 13. Holik D, Bezdán A, Marković M, Orkić Ž, Milostić-Srb A, Mikšić Š, et al. The Association
681 between Drinking Water Quality and Inflammatory Bowel Disease-A Study in Eastern Croatia.
682 *International journal of environmental research and public health*. 2020;17(22). Epub 20201116. doi:
683 10.3390/ijerph17228495. PubMed PMID: 33207850; PubMed Central PMCID: PMC7697303.
- 684 14. Adjorlolo S, Ani-Amponsah M, Hammond E, Nyame MEP. Obstetric fistula-induced
685 incontinence and WASH programming in humanitarian settings: agenda for research, innovation,
686 and practice. *Journal of International Humanitarian Action*. 2023;8(1):1. doi: 10.1186/s41018-022-
687 00133-y.
- 688 15. Karimkhani C, Dellavalle RP, Coffeng LE, Flohr C, Hay RJ, Langan SM, et al. Global Skin Disease
689 Morbidity and Mortality: An Update From the Global Burden of Disease Study 2013. *JAMA Dermatol*.

- 690 2017;153(5):406-12. doi: 10.1001/jamadermatol.2016.5538. PubMed PMID: 28249066; PubMed
691 Central PMCID: PMC5817488.
- 692 16. Nardone R, Brigo F, Trinkka E. Acute Symptomatic Seizures Caused by Electrolyte
693 Disturbances. *J Clin Neurol*. 2016;12(1):21-33. doi: 10.3988/jcn.2016.12.1.21. PubMed PMID:
694 26754778; PubMed Central PMCID: PMC4712283.
- 695 17. Quintero-Quiroz C, Perez VZ. Materials for lower limb prosthetic and orthotic interfaces and
696 sockets: Evolution and associated skin problems. *Revista de la Facultad de Medicina*. 2019. doi:
697 <https://doi.org/10.15446/revfacmed.v67n1.64470>.
- 698 18. United Nations Economic and Social Commission for Asia and the Pacific. Disability-inclusive
699 disaster risk reduction. Available at [https://www.unescap.org/sites/default/files/pre-](https://www.unescap.org/sites/default/files/pre-ods/E_CDR(4)_INF4.pdf)
700 [ods/E_CDR\(4\)_INF4.pdf](https://www.unescap.org/sites/default/files/pre-ods/E_CDR(4)_INF4.pdf) (accessed 13 May 2023); 2015.
- 701 19. Stough LM, Kelman I. People with Disabilities and Disasters. In: Rodríguez H, Donner W,
702 Trainor JE, editors. *Handbook of Disaster Research*. Cham: Springer International Publishing; 2018. p.
703 225-42.
- 704 20. Newman R, Noy I. The global costs of extreme weather that are attributable to climate
705 change. *Nature communications*. 2023;14(1):6103. doi: 10.1038/s41467-023-41888-1.
- 706 21. Keogh M, Gonzalez M. Climate Change: This Century's Defining Issue. CBM, nd.
- 707 22. Araos M, Jagannathan K, Shukla R, Ajibade I, Coughlan de Perez E, Davis K, et al. Equity in
708 human adaptation-related responses: A systematic global review. *One Earth*. 2021;4(10):1454-67.
709 doi: 10.1016/j.oneear.2021.09.001.
- 710 23. Jodoin S, Lofts K, Bowie-Edwards A, Leblanc L, Rourke C. Disability Rights in National Climate
711 Policies: Status Report. Available at [https://www.disabilityinclusiveclimate.org/researcheng/project-](https://www.disabilityinclusiveclimate.org/researcheng/project-one-ephnc-76974-dsc4y)
712 [one-ephnc-76974-dsc4y](https://www.disabilityinclusiveclimate.org/researcheng/project-one-ephnc-76974-dsc4y) (accessed 24 June 2024): Centre for Human Rights & Legal Pluralism &
713 International Disability Alliance, 2022.
- 714 24. Rakib MA, Sasaki J, Matsuda H, Quraishi SB, Mahmud MJ, Bodrud-Doza M, et al.
715 Groundwater salinization and associated co-contamination risk increase severe drinking water
716 vulnerabilities in the southwestern coast of Bangladesh. *Chemosphere*. 2020;246:125646. Epub
717 2019/12/31. doi: 10.1016/j.chemosphere.2019.125646. PubMed PMID: 31884226.
- 718 25. UNICEF, Global Green Growth Institute, African Development Bank, WaterAid, ADB, World
719 Health Organization, et al. Ensuring access to climate-resilient sanitation services for 3.6 billion
720 people by 2030: A call to action for acceleration. Available at
721 <https://www.unicef.org/media/129896/file/Call%20to%20Action%20on%20CRS.pdf> (accessed 7
722 March 2024): No date.
- 723 26. Kohlitz J, Iyer R. *Rural sanitation and climate change: Putting ideas into practice*. Brighton,
724 UK: IDS, 2021.
- 725 27. Kohlitz J, Chong J, Willetts J. Rural Drinking Water Safety under Climate Change: The
726 Importance of Addressing Physical, Social, and Environmental Dimensions. *Resources [Internet]*.
727 2020; 9(6).
- 728 28. Kohlitz JP, Chong J, Willetts J. Climate change vulnerability and resilience of water,
729 sanitation, and hygiene services: a theoretical perspective. *Journal of Water, Sanitation and Hygiene*
730 *for Development*. 2017;7(2):181-95. doi: 10.2166/washdev.2017.134.
- 731 29. de Albuquerque C. *Realising the Human Rights to Water and Sanitation: a handbook by the*
732 *UN Special Rapporteur Catarina de Albuquerque*. 2014.
- 733 30. Office of the United Nations High Commissioner for Human Rights. *Convention on the Rights of*
734 *Persons with Disabilities* Available at [https://www.ohchr.org/en/instruments-](https://www.ohchr.org/en/instruments-mechanisms/instruments/convention-rights-persons-disabilities#2)
735 [mechanisms/instruments/convention-rights-persons-disabilities#2](https://www.ohchr.org/en/instruments-mechanisms/instruments/convention-rights-persons-disabilities#2) (accessed 5 September 2022):
736 2008.
- 737 31. IPCC. Summary for Policymakers. In: *Climate Change 2022: Impacts, Adaptation and*
738 *Vulnerability. Contribution of Working Group II to the Sixth Assessment Report of the*
739 *Intergovernmental Panel on Climate Change* [H.-O.Pörtner, D.C.Roberts, M.Tignor, E.S.Polocanska,
740 K.Mintenbeck, A.Alegría, M.Craig, S. Langsdorf, S. Löschke, V. Möller, A. Okem, B. Rama (eds.)]. .

- 741 Available at <https://www.ipcc.ch/report/ar6/wg2/> (accessed 5 July 2024): Cambridge University
742 Press, Cambridge, UK and New York, NY, USA, 2022.
- 743 32. UNICEF, Global Water Partnership. WASH Climate Resilient Development Strategic
744 Framework. Available here [https://www.gwp.org/globalassets/global/about-
745 gwp/publications/unicef-gwp/gwp_unicef_strategic_framework-2022-edition.pdf](https://www.gwp.org/globalassets/global/about-gwp/publications/unicef-gwp/gwp_unicef_strategic_framework-2022-edition.pdf) (accessed 2
746 February 2023): 2022.
- 747 33. Arksey H, O'Malley L. Scoping studies: towards a methodological framework. *International
748 Journal of Social Research Methodology*. 2005;8(1):19-32. doi: 10.1080/1364557032000119616.
- 749 34. Munn Z, Peters MDJ, Stern C, Tufanaru C, McArthur A, Aromataris E. Systematic review or
750 scoping review? Guidance for authors when choosing between a systematic or scoping review
751 approach. *BMC Medical Research Methodology*. 2018;18(1):143. doi: 10.1186/s12874-018-0611-x.
- 752 35. Peters MDJ, Godfrey CM, Khalil H, McInerney P, Parker D, Soares CB. Guidance for
753 conducting systematic scoping reviews. *JB International*. 2015;13(3).
- 754 36. World Bank. World Bank Country and Lending Groups Available at
755 <https://datahelpdesk.worldbank.org/knowledgebase/articles/906519> (accessed 25 August
756 2023)2023.
- 757 37. Ouzzani M, Hammady H, Fedorowicz Z, Elmagarmid A. Rayyan—a web and mobile app for
758 systematic reviews. *Systematic reviews*. 2016;5(1):210. doi: 10.1186/s13643-016-0384-4.
- 759 38. Ashrafuzzaman M, Gomes C, Guerra J. The Changing Climate Is Changing Safe Drinking
760 Water, Impacting Health: A Case in the Southwestern Coastal Region of Bangladesh (SWCRB).
761 *Climate [Internet]*. 2023; 11(7).
- 762 39. Nuzhat S, Iyer R, Qader AIA, Al-Islam SM. 'A Participatory Assessment for Climate-Induced
763 WASH Vulnerabilities in Bangladesh', SLH Learning Brief, Issue 16. The Sanitation Learning Hub,
764 Brighton: IDS, 2023.
- 765 40. Ahmed F, Shahid M, Cao Y, Qureshi MG, Zia S, Fatima S, et al. A Qualitative Exploration in
766 Causes of Water Insecurity Experiences, and Gender and Nutritional Consequences in South-Punjab,
767 Pakistan. *International journal of environmental research and public health*. 2021;18(23). doi:
768 doi:10.3390/ijerph182312534. PubMed PMID: rayyan-1031026681.
- 769 41. Cassivi A. Access to drinking water in low-and middle-income countries: monitoring and
770 assessment. 2020. doi: doi:doi:. PubMed PMID: rayyan-621371328.
- 771 42. Broyles LMT, Pakhtigian EL, Rosinger AY, Mejia A. Climate and hydrological seasonal effects
772 on household water insecurity: a systematic review. *Wiley Interdisciplinary Reviews: Water*.
773 2022;9(3). doi: doi:<http://dx.doi.org/10.1002/wat2.1593>. PubMed PMID: rayyan-1031026413.
- 774 43. Nayebare J, Owor M, Kulabako R, Campos L, Fottrell E, Taylor R. WASH conditions in a small
775 town in Uganda: how safe are on-site facilities? *Journal of Water, Sanitation and Hygiene for
776 Development*. 2020;10(1):96-110. doi: doi:doi:. PubMed PMID: rayyan-621371363.
- 777 44. Marcus H, Muga R, Hodgins S. Climate adaptation and WASH behavior change in the Lake
778 Victoria Basin. *Journal of Water, Sanitation and Hygiene for Development*. 2023;13(3):174-86. doi:
779 doi:doi:. PubMed PMID: rayyan-621371356.
- 780 45. Foggitt A. Understanding multiple health risks for low-income communities in Cape Town:
781 water stress, COVID-19, and climate change. 2021. doi: doi:doi:. PubMed PMID: rayyan-621371341.
- 782 46. Glasgow L, Mendes J. Knowledge, attitudes and practices regarding rainwater harvesting in
783 Carriacou, Grenada. *International Public Health Journal*. 2020;12(4):385-92. doi: doi:. PubMed PMID:
784 rayyan-1031026471.
- 785 47. French MA, Barker SF, Taruc RR, Ansariadi A, Duffy GA, Saifuddaolah M, et al. A planetary
786 health model for reducing exposure to faecal contamination in urban informal settlements: baseline
787 findings from Makassar, Indonesia. *Environment International*. 2021;155. doi:
788 doi:<http://dx.doi.org/10.1016/j.envint.2021.106679>. PubMed PMID: rayyan-1031026735.
- 789 48. Wutich A, Ragsdale K. Water insecurity and emotional distress: coping with supply, access,
790 and seasonal variability of water in a Bolivian squatter settlement. *Social Science & Medicine*.

- 791 2008;67(12):2116-25. doi: doi:10.1016/j.socscimed.2008.09.042. PubMed PMID: rayyan-
792 1031026889.
- 793 49. Bukachi SA, Omia DO, Musyoka MM, Wambua FM, Peter MN, Korzenevica M. Exploring
794 water access in rural Kenya: Narratives of social capital, gender inequalities and household water
795 security in Kitui county. *Water International*. 2021;46(5):677-96. doi: doi:doi:. PubMed PMID:
796 rayyan-621371327.
- 797 50. Kohlitz J, Kumar A, Iyer R. 'Rural Sanitation in a Changing Climate: Reflections and Case
798 Studies', SLH Learning Brief 17. . Available at [https://sanitationlearninghub.org/resource/rural-](https://sanitationlearninghub.org/resource/rural-sanitation-in-a-changing-climate-case-studies-and-reflections/)
799 [sanitation-in-a-changing-climate-case-studies-and-reflections/](https://sanitationlearninghub.org/resource/rural-sanitation-in-a-changing-climate-case-studies-and-reflections/) (accessed 28 May 2024): The
800 Sanitation Learning Hub, Brighton: IDS 2023.
- 801 51. Iyer R, Pare Toe L. 'Impact of climate hazards on rural sanitation and hygiene practices in
802 Burkina Faso', SLH Learning Brief 12. The Sanitation Learning Hub, Brighton: IDS, 2022.
- 803 52. Amondo EI, Kirui OK, Mirzabaev A. Health gender gap in Uganda: do weather effects and
804 water play a role? *International journal for equity in health*. 2022;21(1):1-16. doi:
805 doi:10.1186/s12939-022-01769-3. PubMed PMID: rayyan-1031026685.
- 806 53. Elgert L, Austin P, Picchione K. Improving water security through rainwater harvesting: a case
807 from Guatemala and the potential for expanding coverage. *INTERNATIONAL JOURNAL OF WATER*
808 *RESOURCES DEVELOPMENT*. 2016;32(5):765-80. doi: doi:10.1080/07900627.2015.1104499. PubMed
809 PMID: rayyan-1031026449.
- 810 54. Kundu AK. A Study on How Climate Change Affects the Water, Sanitation, and Hygiene
811 (Wash) Sectors in Barguna Sadar Upazila, Bangladesh. *International Journal of Environment and*
812 *Climate Change*. 2023;13(11):Page 2684-96, 023. doi: Available at SSRN:
813 <https://ssrn.com/abstract=4629527>.
- 814 55. Guo JX, Hu L, Yand PZ, Tanabe K, Miyatalre M, Chen Y. Chronic arsenic poisoning in drinking
815 water in Inner Mongolia and its associated health effects. *J Environ Sci Health A Tox Hazard Subst*
816 *Environ Eng*. 2007;42(12):1853-8. doi: doi:10.1080/10934520701566918. PubMed PMID: rayyan-
817 1031026746.
- 818 56. Guo DL, Thomas J, Lazaro A, Mahundo C, Lwetoijera D, Mrimi E, et al. Understanding the
819 Impacts of Short-Term Climate Variability on Drinking Water Source Quality: Observations From
820 Three Distinct Climatic Regions in Tanzania. *GEOHEALTH*. 2019;3(4):84-103. doi:
821 doi:10.1029/2018GH000180. PubMed PMID: rayyan-1031026476.
- 822 57. Carlton EJ, Eisenberg JN, Goldstick J, Cevallos W, Trostle J, Levy K. Heavy rainfall events and
823 diarrhea incidence: the role of social and environmental factors. *Am J Epidemiol*. 2014;179(3):344-
824 52. Epub 2013/11/22. doi: 10.1093/aje/kwt279. PubMed PMID: 24256618; PubMed Central PMCID:
825 PMC3895100.
- 826 58. Mitu K, Jones N, Vintges J, Devonald M. Climate Risks and Truncated Opportunities: How Do
827 Environmental Challenges Intersect with Economic and Social Disadvantages for Rohingya
828 Adolescents in Bangladesh? *Sustainability*. 2022;14(8):4466. doi: doi:doi:. PubMed PMID: rayyan-
829 621371360.
- 830 59. de Duren NRL, Rivas RO, Perlman J. Environmental and Social Sustainability of Urban
831 Upgrading Programs: Lessons from Rio. *CITIES*. 2021;119. doi: doi:10.1016/j.cities.2021.103416.
832 PubMed PMID: rayyan-1031026435.
- 833 60. Islam MM, Afrin S, Tarek MH, Rahman MM. Reliability and financial feasibility assessment of
834 a community rainwater harvesting system considering precipitation variability due to climate
835 change. *J Environ Manage*. 2021;289:112507. Epub 2021/04/12. doi:
836 10.1016/j.jenvman.2021.112507. PubMed PMID: 33839610.
- 837 61. Scherer N, Mactaggart I, Huggett C, Pheng P, Rahman M-u, Biran A, et al. The Inclusion of
838 Rights of People with Disabilities and Women and Girls in Water, Sanitation, and Hygiene Policy
839 Documents and Programs of Bangladesh and Cambodia: Content Analysis Using EquiFrame.
840 *International journal of environmental research and public health*. 2021;18(10). doi:
841 10.3390/ijerph18105087.

- 842 62. Wilbur J, Scherer N, Mactaggart I, Shrestha G, Mahon T, Torondel B, et al. Are Nepal's water,
843 sanitation and hygiene and menstrual hygiene policies and supporting documents inclusive of
844 disability? A policy analysis *International journal for equity in health*. 2021;20. doi:
845 <https://doi.org/10.1186/s12939-021-01463-w>.
- 846 63. Wilbur J, Morrison C, Iakavai J, Shem J, Poilapa R, Bambery L, et al. "The weather is not
847 good": exploring the menstrual health experiences of menstruators with and without disabilities in
848 Vanuatu. *The Lancet Regional Health – Western Pacific*. 2021. doi:
849 <https://doi.org/10.1016/j.lanwpc.2021.100325>.
- 850 64. Wilbur J, Morrison C, Bambery L, Tanguay J, Baker S, Sheppard P, et al. "I'm scared to talk
851 about it": exploring experiences of incontinence for people with and without disabilities in Vanuatu,
852 using mixed methods. *The Lancet Regional Health - Western Pacific*. 2021;14:100237. doi:
853 <https://doi.org/10.1016/j.lanwpc.2021.100237>.
- 854 65. Daly SW, Lowe J, Hornsby GM, Harris AR. Multiple water source use in low- and middle-
855 income countries: a systematic review. *Journal of water and health*. 2021;19(3):370-92. doi:
856 10.2166/wh.2021.205.
- 857 66. Bose I, Dreibelbis R, Green R, Murray KA, Ceesay O, Kovats S. Climate change, seasonality
858 and household water security in rural Gambia: A qualitative exploration of the complex relationship
859 between weather and water. *PLOS Water*. 2024;3(6):e0000239. doi: 10.1371/journal.pwat.0000239.
- 860 67. UNESCO, UN-Water. *United Nations World Water Development Report 2020: Water and
861 Climate Change*. Paris, France UNESCO, 2020.
- 862 68. Roque A, Quimby B, Brewis A, Wutich A. Building Social Capital in Low-Income Communities
863 for Resilience. In: Brears RC, editor. *The Palgrave Handbook of Climate Resilient Societies*. Cham:
864 Springer International Publishing; 2021. p. 1489-510.
- 865 69. Carmen E, Fazey I, Ross H, Bedinger M, Smith FM, Prager K, et al. Building community
866 resilience in a context of climate change: The role of social capital. *Ambio*. 2022;51(6):1371-87. Epub
867 20220111. doi: 10.1007/s13280-021-01678-9. PubMed PMID: 35015248; PubMed Central PMCID:
868 PMC9005590.
- 869 70. Wilbur J, Clemens F, Sweet E, Banks LM, Morrison C. The inclusion of disability within efforts
870 to address menstrual health during humanitarian emergencies: A systematized review. *Frontiers in
871 Water*. 2022;4. doi: <https://doi.org/10.3389/frwa.2022.983789>.
- 872 71. Wilbur J, Torondel B, Hameed S, Mahon T, Kuper H. Systematic review of menstrual hygiene
873 management requirements, its barriers and strategies for disabled people. *PLOS ONE*.
874 2019;14(2):e0210974. doi: 10.1371/journal.pone.0210974.
- 875 72. Schreiber T, Solebo AL. The Experience of Menarche for Young People With Sensory and
876 Motor Impairments: A Systematic Review. *Journal of Adolescent Health*. 2024. doi:
877 10.1016/j.jadohealth.2023.08.014.
- 878 73. Randall KN, Hopkins CS, Drew H. Menstrual education programs for girls and young women
879 with intellectual and developmental disabilities: A systematic review. *Journal of Applied Research in
880 Intellectual Disabilities*. 2024;37(4):e13264. doi: <https://doi.org/10.1111/jar.13264>.
- 881 74. Pérez-Curiel P, Vicente E, Morán ML, Gómez LE. The Right to Sexuality, Reproductive Health,
882 and Found a Family for People with Intellectual Disability: A Systematic Review. *International journal
883 of environmental research and public health* [Internet]. 2023; 20(2).
- 884 75. Paulauskaite L, Rivas C, Paris A, Totsika V. A systematic review of relationships and sex
885 education outcomes for students with intellectual disability reported in the international literature.
886 *Journal of intellectual disability research : JIDR*. 2022;66(7):577-616. Epub 2022/06/15. doi:
887 10.1111/jir.12952. PubMed PMID: 35698311; PubMed Central PMCID: PMC9328360.
- 888 76. World Health Organization. Diarrhoeal disease Available at [https://www.who.int/news-
889 room/fact-sheets/detail/diarrhoeal-disease](https://www.who.int/news-room/fact-sheets/detail/diarrhoeal-disease) (accessed 21 June 2024)2024.
- 890 77. Kuper H, Heydt P. *The Missing Billion: access to health services for 1 billion people with
891 disabilities*. LSHTM: 2019.

- 892 78. Charlson F, Ali S, Benmarhnia T, Pearl M, Massazza A, Augustinavicius J, et al. Climate
893 Change and Mental Health: A Scoping Review. *International journal of environmental research and*
894 *public health*. 2021;18(9):4486. doi: 10.3390/ijerph18094486. PubMed PMID: 33922573.
- 895 79. Wahid SS, Raza WA, Mahmud I, Kohrt BA. Climate-related shocks and other stressors
896 associated with depression and anxiety in Bangladesh: a nationally representative panel study. *The*
897 *Lancet Planetary Health*. 2023;7(2):e137-e46. doi: 10.1016/S2542-5196(22)00315-1.
- 898 80. Venkataramanan V, Geere J-AL, Thomae B, Stoler J, Hunter PR, Young SL. In pursuit of ‘safe’
899 water: the burden of personal injury from water fetching in 21 low-income and middle-income
900 countries. *BMJ Global Health*. 2020;5(10):e003328. doi: 10.1136/bmjgh-2020-003328.
- 901 81. Robson E, Porter G, Hampshire K, Munthali A. Heavy loads: children's burdens of water
902 carrying in Malawi. *Waterlines*. 32:23–35. doi: 10.3362/1756-3488.2013.003.
- 903 82. Meierhofer R, Tomberge VMJ, Inauen J, Shrestha A. Water carrying in hills of Nepal—
904 associations with women’s musculoskeletal disorders, uterine prolapse, and spontaneous abortions.
905 *PLOS ONE*. 2022;17(6):e0269926. doi: 10.1371/journal.pone.0269926.
- 906 83. Winter S, Dreibelbis R, Barchi F. Women’s sanitation practices in informal settlements: A
907 multi-level analysis of factors influencing utilisation in Nairobi, Kenya. *Global public health*.
908 2019;14(5):663-74. doi: 10.1080/17441692.2018.1534256.
- 909 84. Merkle O, Allakulov U, Gonzalez D, Sánchez AH, Rabbi SE, Hasan Z. When vulnerabilities are
910 exploited—The role of sextortion in the WASH sector in Bangladesh. *Frontiers in Water*. 2023;5. doi:
911 10.3389/frwa.2023.1048594.
- 912 85. Miller JD, Workman CL, Panchang SV, Sneegas G, Adams EA, Young SL, et al. Water Security
913 and Nutrition: Current Knowledge and Research Opportunities. *Adv Nutr*. 2021;12(6):2525-39. doi:
914 10.1093/advances/nmab075. PubMed PMID: 34265039; PubMed Central PMCID: PMC8634318.
- 915 86. Pinilla-Roncancio M, Alkire S. How Poor Are People With Disabilities? Evidence Based on the
916 Global Multidimensional Poverty Index. *Journal of Disability Policy Studies*. 2020;31(4):206-16. doi:
917 10.1177/1044207320919942.
- 918 87. Gwoździej-Mazur J, Jadwiszczak P, Kaźmierczak B, Kózka K, Struk-Sokołowska J, Wartalska K,
919 et al. The impact of climate change on rainwater harvesting in households in Poland. *Applied Water*
920 *Science*. 2022;12(2):15. doi: 10.1007/s13201-021-01491-5.
- 921

922 **Supporting information captions**

923 S1. PRISMA Scoping Review Checklist

924 S2. Search strategy and key terms

Fig 1: Search strategy with PRISMA flow diagram

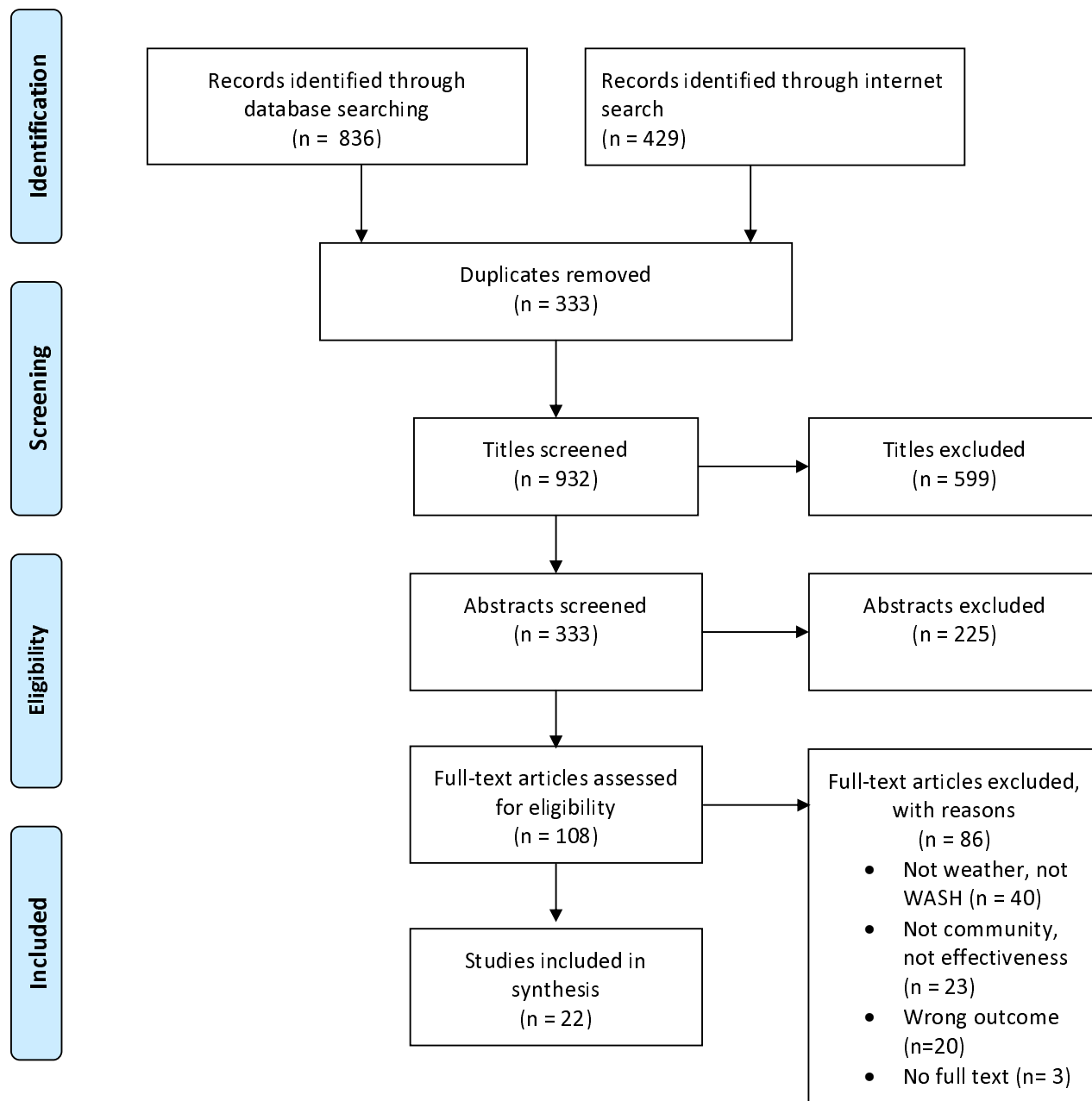


Table 1. Summary of studies on impacts of climate hazards on WASH

Reference	Country and setting	Weather events	Water, Sanitation, or Hygiene	Methods	Key results	Key results: women and girls	Key results: disability
Ahmed, F. et al. (2021)	Pakistan, South Punjab, Semi-arid region.	Rainfall uncertainty and drought.	W, H	Qualitative. Focus Group Discussions. In-depth interviews with women, men, female health workers, n=35.	Health impacts: diarrhoea, lethargy, stress, dehydration. Coping strategies: increased open defecation, used mud and stones for anal cleansing, reduced handwashing and laundry.	Health impacts: lethargy, stress, dehydration, reduction in breastmilk and breastfeeding. Coping strategies: Walked further for water, collected water and did laundry in groups, older adults collected water with girls, mothers left children at home alone.	N/A
Amondo, E.I. et al. (2022)	Uganda, all regions, tropical and semi-arid.	Rainfall uncertainty and drought.	W	Quantitative, secondary data analysis, women and men, n=22,469	Health impacts: headache, fever, weakness, coughing, abdominal pain and diarrhoea. Coping strategies: some used domestic rainwater harvesting.	Health impacts: higher rates of illness than men. Coping strategies: Walked further to water source, spent longer collecting, some used domestic rainwater harvesting.	N/A
Ashrafuzzaman, M. et al (2023)	Bangladesh, The Ganges Delta, tropical.	Rainfall uncertainty and drought. Increased rainfall, flooding and cyclones. Climate change induced sea level rise and saltwater intrusion.	W, S	Mixed methods, household survey, interviews, focus group discussions, case study.	Health: diarrhoea, dysentery, high blood pressure. Coping strategies: walked further for water, multiple use of water (deep tubewells, shallow wells, rainwater harvesting, unprotected surface water), pond sand filters, installing piped water, buying water, use unhygienic latrines, use pond water for cooking.	Health (maternal): hypertension, pre-eclampsia and respiratory infections. Coping strategies: not given.	N/A

Broyles, L.M.T. et al. (2022)	Global	Rainfall uncertainty and drought. Increased rainfall and flooding.	W	Systematic review (PRISMA guidelines), n=67 papers.	Health impacts: Hypertension. Coping strategies: walk longer distances, use alternative sources, collect water at night to avoid queues, buy water (cost increases in dry season), and use poorer quality water if it's closer to home, collect water from neighbours and kin.	N/A	N/A
Bukachi, S.A. et al. (2021)	Kenya, Kikui county, Semi-arid	Rainfall uncertainty and drought.	W	Qualitative, Focus Group Discussions (n=10), In-depth Interviews (n=85), Women, men.	Health impacts: none given. Coping strategies: Men identify people with water from within networks.	Health impacts: None given. Coping strategies: Collect and share water across networks based on reciprocity.	Health impacts: none given. Coping strategies: relied on friends, neighbours, church to collect water, based on moral obligation.
Carlton, E.J et al. (2014)	Ecuador, river basin, tropical.	Increased rainfall and flooding.	W, S, H	Quantitative, household survey, n=19	Health impacts: Diarrhoea. Coping strategies: Treated drinking water.	N/A	N/A
Cassivi, A. (2022)	Malawi, southern region, semi-arid.	Rainfall uncertainty and drought.	W	Quantitative, household survey, n=375. Systematic review (PRISMA guidelines), n=20 papers	Health impacts: Diarrhoea. Coping strategies: Multiple use of water services, including informal rainwater harvesting to supplement a primary source.	N/A	N/A
Elgert, L. et al. (2016)	Guatemala, north-central, tropical.	Rainfall uncertainty and drought.	W, H	Qualitative, in-depth interview, observation, n=12 households.	Health: not given. Coping strategies: Year-round rainwater harvesting at the household; supplemented with multiple trips to do laundry at public water points when rainwater levels dropped.	Health impacts: None given. Coping strategies: multiple trips to water points.	N/A

Foggit, A. (2021)	South Africa, Cape Town, Mediterranean	Rainfall uncertainty and drought.	W, S	Mixed-methods, primary and secondary data analysis (n=311 video stories), online interviews and questionnaire (n=39).	Health impacts: Psychological stress, water-related diseases (e.g. diarrhoea). Coping strategies: water rationing, drinking unsafe water, walking further for water.	Health impacts: psychological stress caused by constant fear of water shortages. Coping strategies: none given.	N/A
French, M.A. Et al. (2021)	Indonesia, Eastern region, tropical	Rainfall uncertainty and drought.	W, H	Quantitative, household surveys, soil and water sampling n=2,764 people, 593 households.	Health impacts: diarrhoea, psychological stress. Coping strategies: use water bottle refill depot for drinking, multiple use of water service for personal and food hygiene.	N/A	N/A
Glasgow, L. & Mendes, J. (2020)	Grenada, Southern Grenadines, tropical.	Rainfall uncertainty and drought.	W, H	Quantitative, household survey, n=20 households	Health: Diarrhoea. Coping strategies: using untreated rainwater for drinking, cooking, bathing, flushing toilets; collected water from neighbours.	N/A	N/A
Guo, D. et al (2019)	Tanzania, Buguruni (tropical savanna), Kilombero (tropical monsoon), and Kondoia (semi-arid) regions.	Rainfall uncertainty and drought. Increased rainfall and flooding.	W	Longitudinal cohort observational study, household surveys, water quality testing, observation, n=636 households,	Health: not given. Coping strategies: not given	N/A	N/A

				238 water sources.			
Islam, M.M et al (2021)	Bangladesh, Khulna District, tropical.	Increased rainfall and flooding. Climate change induced sea level rise and saltwater intrusion.	W, H	Mixed-methods, household surveys and observation, n=109 households.	Health impact: none given. Coping strategies: Used Pond water for personal hygiene and laundry, bought water for drinking and cooking, employed women to collect water from distant sources.	N/A	N/A
Iyer, R. & Pare Toe, L (2022)	Burkina Faso, Fada Gourma province. semi-arid.	Rainfall uncertainty and drought. Increased rainfall and flooding.	W, S, H	Qualitative, participatory, interviews, focus group discussions.	Health: Mental fatigue. Coping strategies: prioritised water for food and livelihoods, Use toilet paper or wood instead of water for anal cleansing, bathe in toilets and use water to clean the toilet, open defecation and/or use neighbour's toilet, dig new pits instead of emptying/reusing, prioritised building latrines because of inadequate shrub coverage for open defecation, build more robust toilets or on higher ground, barricade homesteads to protect home and latrine from flooding.	Health: not given. Coping strategy: Travel further for water, prioritised water for food and livelihoods.	N/A
Kohlitz, J. et al. (2023)	Burkina Faso, Fada Gourma province. semi-arid. Bangladesh,	Rainfall uncertainty and drought. Increased rainfall and	S, H	Qualitative, observation, interviews, participatory methods.	Health impacts: not given. Coping strategies: open defecation, reduction in bathing.	Health impacts: Rashes, burns, urinary tract infections, blisters. Coping strategies: use saline water for menstrual health, walk further for water.	N/A

	Satkhira district, tropical.	flooding. Climate change induced sea level rise and saltwater intrusion.					
Kundu, A.K.(2023)	Bangladesh, Barguna Sadar Upazila, tropical.	Rainfall uncertainty and drought. Increased rainfall, flooding and cyclones.	W, S	Mixed methods, online survey, interviews.	Health: water related diseases. Coping strategies: multiple use of water (deep tubewells, rainwater harvesting, unprotected surface water), boil water before drinking.	Health: not given. Coping strategy: walked further for water.	N/A
de Duren. N.R. et al (2021)	Brazil, Rio de Janeiro, tropical.	Increased rainfall and flooding.	W, S	Qualitative, focus group discussions, observation, n=80 participants in 88 upgraded favelas.	Health impacts: none given. Coping strategies: none given.	N/A	N/A
Marcus, H. et al. (2023)	Kenya, Lake Victoria Basin, tropical	Rainfall uncertainty and drought. Increased rainfall and flooding.	W, S	Qualitative, in-depth interviews, focus group discussions, observation. N=96	Health impacts: Diarrhoea. Coping strategies: Multiple use of water services (bottled, rainwater harvesting), recycling water, solar/chlorine water treatment, open defecation, foregoing handwashing during drought, consuming herbs for gastrointestinal health, building ditches for flooding.	Health impacts: none given. Coping strategies: pooling savings before rains in anticipation of potential latrine reconstruction.	N/A

Mitu, K. et al. (2022)	Bangladesh, Cox's Bazar, Tropical	Rainfall uncertainty and drought. Increased rainfall and flooding.	W, S, H	Qualitative, in-depth interviews, focus group discussions, key informant interviews (N=57 adolescents, n=6 key informants)	Health impacts: Anxiety and stress. Coping strategies: Water: Travelling long distances for water, rainwater harvesting, paying for drinking water, boys collect water and bathe in canals or public water points. Sanitation: open defecation	Health impacts: none given. Coping strategies: Adolescent girls were not allowed to collect water, reduction in bathing.	Health impacts: none given. Coping strategies: Traverse more difficult terrain to toilets.
Nayebare, J.G. et al. (2020)	Uganda, Kalungu District, tropical	Rainfall uncertainty and drought. Increased rainfall and flooding.	W, S, H	Mixed methods, household surveys, observations, interviews, focus group discussions.	Health impacts: e-coli, diarrhoea. Coping strategies: boiling drinking water.	N/A	N/A
Nuzhat, S. et al. (2023)	Bangladesh, Satkhira district, tropical	Rainfall uncertainty and drought. Increased rainfall, flooding and cyclones. Climate change induced sea level rise and saltwater intrusion. Extreme heat	W, S, H	Mixed-methods, survey, participatory workshops, focus group discussions	Health: water related diseases. Coping strategies: Drink and use saline water, build toilets with concrete and brick using ceramic/porcelain tiles around concrete infrastructure, raise the height of toilet plinths or platforms of water sources, relocate sanitation and water facilities to higher ground.	Health: rashes, burns, urinary track infections, blisters from using salinized water for menstrual health. Coping mechanisms: use saline water for menstrual health. Walk further for water.	N/A

Wutich, A. et al. (2008)	Bolivia, central Bolivia, tropical	Rainfall uncertainty and drought.	W	Mixed-methods, surveys, in-depth interviews, observation, key informant interviews n=72 household heads.	Health impacts: diarrhoea, dehydration, intestinal worms, stress. Coping strategies: drinking contaminated water, reducing bathing.	Health impacts: Stress. Coping strategies: paying for water.	N/A
--------------------------	------------------------------------	-----------------------------------	---	--	---	--	-----

Table 2. Studies on the effectiveness of climate-resilient WASH

Study	Study aim	Study site and methodology	Technology	Key findings
Elgert, L. et al. (2016)	Evaluate if rainwater harvesting has improved water security in a peri-urban village in Guatemala and draws implications from this project for expansion to the region and beyond.	Peri-urban village in Guatemala. Qualitative: interviews and observation of rainwater harvesting technology, 12 households.	Household rainwater harvesting	Increased household water security and a reduction in time and energy expended by women collecting water from public water points. However, some negative impacts regarding cost, water quality.
Glasgow, L. & Mendes, J. (2020)	Assess the knowledge, attitudes and practices about household rainwater harvesting.	Carricoao, Grenada. Quantitative: survey of 20 households in 15 communities.	Household rainwater harvesting	Increased water security but some concerns about water quality associated with poor maintenance.