

1 **BMI-related Genetic Factors and COPD Imaging Phenotypes**

2 Authors: Jingzhou Zhang^{1,2}, Matthew Moll^{2,3,4}, Catherine L. Debban⁵, Brian D. Hobbs^{2,3}, Heena
3 Rijhwani², George R. Washko³, Bartolome R. Celli³, Edwin K. Silverman^{2,3}, Per Bakke⁶,
4 Elizabeth C. Oelsner⁷, R. Graham Barr⁷, Alvar Agustí^{8,9}, Rosa Faner¹⁰, Guy G. Bruselle¹¹,
5 Stephen M. Humphries¹², David A. Lynch¹², Josée Dupuis^{13,14}, Ani W. Manichaikul⁵, George T.
6 O'Connor^{1,15,#}, Michael H. Cho^{2,3,#}

7 Affiliations: ¹The Pulmonary Center, Department of Medicine, Boston University School of
8 Medicine, Boston, MA; ²Channing Division of Network Medicine, and ³Division of Pulmonary
9 and Critical Care Medicine, Department of Medicine, Brigham and Women's Hospital and
10 Harvard Medical School, Boston, MA; ⁴Division of Pulmonary, Critical Care, Sleep, and
11 Allergy, VA Boston Healthcare System, West Roxbury, MA; ⁵Center for Public Health
12 Genomics, University of Virginia, Charlottesville, VA; ⁶Department of Clinical Science,
13 University of Bergen, Bergen, Norway; ⁷Department of Medicine, Columbia University Medical
14 Center, New York, NY; ⁸Respiratory Institute, Hospital Clinic, University of Barcelona,
15 Barcelona, and ⁹FRC-IDIBAPS, CIBERES, Spain; ¹⁰Department of Biomedical Sciences,
16 University of Barcelona, Barcelona, Spain; ¹¹Department of Respiratory Medicine, Ghent
17 University Hospital, Ghent, Belgium; ¹²Department of Radiology, National Jewish Health,
18 Denver, CO; ¹³Department of Biostatistics, Boston University School of Public Health, Boston,
19 MA; ¹⁴Department of Epidemiology, Biostatistics and Occupational Health, McGill University,
20 Montreal, Canada; ¹⁵The NHLBI Framingham Heart Study, Framingham, MA; #Contributed
21 equally as senior authors.

22
23 Corresponding author:
24 Michael H. Cho, MD, MPH
25 181 Longwood Ave, Boston, MA 02115
26 remhc@channing.harvard.edu

27 **Abstract**

28 **Background:** While low body mass index (BMI) is associated with emphysema and obesity is
29 associated with airway disease in chronic obstructive pulmonary disease (COPD), the underlying
30 mechanisms are unclear.

31 **Methods:** We aggregated genetic variants from population-based genome-wide association
32 studies to generate a polygenic score of BMI (PGS_{BMI}). We calculated this score for participants
33 from COPD-enriched and community-based cohorts and examined associations with automated
34 quantification and visual interpretation of computed tomographic emphysema and airway wall
35 thickness (AWT). We summarized the results using meta-analysis.

36 **Results:** In the random-effects meta-analyses combining results of all cohorts ($n=16,349$), a
37 standard deviation increase of the PGS_{BMI} was associated with less emphysema as quantified by
38 log-transformed percent of low attenuation areas ≤ 950 Hounsfield units ($\beta = -0.062, p < 0.0001$)
39 and 15th percentile value of lung density histogram ($\beta = 2.27, p < 0.0001$), and increased AWT as
40 quantified by the square root of wall area of a 10-mm lumen perimeter airway ($\beta = 0.016,$
41 $p = 0.0006$) and mean segmental bronchial wall area percent ($\beta = 0.26, p = 0.0013$). For imaging
42 characteristics assessed by visual interpretation, a higher PGS_{BMI} was associated with reduced
43 emphysema in both COPD-enriched cohorts (OR for a higher severity grade = 0.89, $p = 0.0080$)
44 and in the community-based Framingham Heart Study (OR for the presence of
45 emphysema = 0.82, $p = 0.0034$), and a higher risk of airway wall thickening in the COPDGene
46 study (OR = 1.17, $p = 0.0023$).

47 **Conclusions:** In individuals with and without COPD, a higher body mass index polygenic risk is
48 associated with both quantitative and visual decreased emphysema and increased AWT,
49 suggesting genetic determinants of BMI affect both emphysema and airway wall thickening.

50 **Introduction**

51 Chronic obstructive pulmonary disease (COPD) is a heterogeneous condition, with emphysema
52 and airway disease recognized as associated clinical phenotypes. In data-driven clustering studies
53 of COPD phenotypes, emphysema- and airway-predominant disease axes and subtypes have
54 been identified.^{1,2} On chest computed tomography (CT), emphysema is characterized by low
55 attenuation areas and airway disease is associated with airway wall thickening. CT-based
56 emphysema and airway wall thickness (AWT) measures are associated with airflow obstruction
57 and mortality in people with and without COPD.³⁻⁵

58 Body mass index (BMI) varies greatly in people with COPD. Individuals with
59 predominant emphysema often have lower BMI compared to those with predominant airway
60 disease. This phenomenon was observed decades ago when the terms “pink puffer” and “blue
61 bloater” were used to describe people with stereotypical emphysema and chronic bronchitis
62 phenotypes, respectively.⁶ Using quantitative CT measures, lower BMI is associated with
63 emphysema and higher fat mass is associated with higher AWT in individuals with COPD.^{7,8}
64 However, the mechanisms underlying these observed associations are unclear.

65 Genetic variants are assigned at birth and thus less susceptible to later life confounding
66 factors, offer an opportunity to identify causal disease mechanisms. Genetic factors strongly
67 influence BMI, with an estimated heritability of 30-40% with common genetic variants
68 explaining more than half of the heritability.⁹ Genome-wide association studies (GWAS) have
69 identified hundreds of common genetic variants associated with BMI.¹⁰ The common variants
70 most strongly associated with BMI, fat mass, and obesity are at the *FTO* (fat mass and obesity-
71 associated) gene locus, both in general population samples and in patients with COPD.¹¹
72 However, for complex traits such as BMI, the effect of an individual genetic variant tends to be

73 small. A polygenic score (PGS) aggregating the effects of numerous variants across the entire
74 genome can increase the power to detect genetic effects and clarify causal relationships.¹²

75 We hypothesized that genetic variants associated with higher BMI are associated with
76 decreased emphysema and increased AWT. As emphysema and airway disease can precede the
77 development of airflow obstruction and are associated with clinical outcomes in individuals with
78 and without COPD,³⁻⁵ we tested our hypotheses among participants from COPD-enriched and
79 community-based cohorts.

80

81 **Methods**

82 Study cohorts

83 We included participants who had available genotyping and chest CT data from the Genetic
84 Epidemiology of COPD (COPDGene),¹³ the Evaluation of COPD Longitudinally to Identify
85 Predictive Surrogate Endpoints (ECLIPSE),¹⁴ the National Emphysema Treatment Trial
86 (NETT),¹⁵ the Genetics of Chronic Obstructive Lung Disease (GenKOLS),¹⁶ the Framingham
87 Heart (FHS),^{17,18} and the Multi-Ethnic Study of Atherosclerosis (MESA) Lung studies,¹⁹ which
88 have been previously described. The COPDGene, ECLIPSE, NETT, and GenKOLS enrolled
89 participants with a smoking history and were enriched with COPD. In contrast, the FHS and
90 MESA recruited community-dwelling participants without regard to a history of smoking or
91 COPD. The COPDGene (non-Hispanic white, NHW, and African American, AA participants)
92 and MESA (NHW, AA, Chinese, and Hispanic participants) were multi-ancestry studies, and the
93 rest of the cohorts included predominantly NHW participants. Each study was approved by the
94 Institutional Review Boards at participating institutions, and all participants provided written
95 informed consent. Further details of study cohorts can be found in the Supplementary Methods.

96 *Polygenic score of BMI*

97 To obtain a summative measure of genetic variants associated with BMI, we developed a
98 polygenic score of BMI (PGS_{BMI}) based on the GIANT Consortium and UK biobank BMI
99 GWAS meta-analysis summary statistics (~700,000 predominantly general population
100 participants of European ancestry) using elastic net-based regression (lassosum v0.4.5).¹⁰ The
101 details of the development of the PGS_{BMI} have been previously described.²⁰ We calculated a
102 PGS_{BMI} for each study participant as a weighted sum of variant effects using the lassosum-
103 generated weights and the dosage of the BMI-increasing allele at each variant. We estimated the
104 phenotypic variance explained by the PGS_{BMI} within each cohort using the R-squared method,
105 and a randomly selected sample of unrelated participants was used for this estimation in FHS.

106 *Emphysema and airway wall thickness measures*

107 We included quantitative and visual (qualitative) measures of emphysema and airway wall
108 thickness (AWT) assessed on inspiratory CT. Based on CT radiodensity (in Hounsfield unit
109 [HU]), emphysema was quantitatively evaluated using percent of low attenuation area ≤ -950 HU
110 (%LAA-950), HU value at the 15th percentile of lung attenuation histogram (perc15), and lung
111 volume-adjusted lung density (ALD).²¹ Based on visual assessment, the severity of overall,
112 centrilobular, and paraseptal emphysema were qualitatively graded into ordinal categories.²² We
113 estimated the longitudinal change in ALD using the average annual difference in ALD between
114 the 5-year follow-up and baseline visits in COPDGene. AWT was quantitatively measured using
115 the square root of wall area of a theoretical airway with a 10-mm lumen perimeter (Pi10, in mm)
116 and the mean wall area percent of the segmental (WAP-seg) and subsegmental (WAP-subseg)
117 bronchi,²³ and qualitatively evaluated as the presence of airway wall thickening based on visual
118 assessment.²⁴ In addition to individual emphysema and AWT measures, we also included

119 previously identified emphysema and airway disease axes and COPD imaging subtypes in
120 COPDGene.^{2,25} Additional details about the imaging outcomes can be found in the
121 Supplementary Methods.

122 *PGS_{BMI} association analyses*

123 We standardized the PGS_{BMI} to a mean of 0 and a standard deviation (SD) of 1 within each
124 cohort. As a result, the effect estimates for the PGS_{BMI} were at the scale of per one SD increase
125 of the PGS_{BMI} in the association analyses. The %LAA-950 was natural log transformed to
126 account for skewness. We determined five primary outcomes including log-transformed %LAA-
127 950 (log-%LAA-950), perc15, visual emphysema severity, Pi10, and WAP-seg which were
128 available among most cohorts. We tested associations between the PGS_{BMI} and emphysema and
129 AWT outcomes using multivariable linear, binary logistic, ordinal logistic (for visual
130 emphysema severity), and multinomial logistic (for COPD imaging subtypes) regressions as
131 appropriate for outcomes. All models were adjusted for age, sex, current smoking status, pack-
132 years of smoking, CT scanner, and principal components of genetic ancestry. AWT outcomes
133 were additionally adjusted for height to account for body size.²⁶ To assess whether BMI-related
134 variation in inspiration at the CT scanning substantially influenced the association between
135 PGS_{BMI} and AWT outcomes, we conducted sensitivity analysis further adjusting for CT total
136 lung capacity (available in COPDGene, GenKOLS, and FHS). Longitudinal change in ALD was
137 further adjusted for baseline ALD and current smoking status at the follow-up visit. Family
138 relatedness in FHS was accounted for using a kinship matrix. We performed inverse variance-
139 weighted (IVW) random-effects meta-analyses to combine effect estimates among cohorts. For
140 the association analyses between the PGS_{BMI} and the primary outcomes, we used a Bonferroni-

141 corrected p-value ($p < 0.05/5$) to determine statistical significance. The rest of the analyses were
142 considered exploratory and a p-value < 0.05 was used.

143 Mendelian randomization analyses

144 We performed two-sample Mendelian randomization (MR) analyses with the “TwoSampleMR”
145 R package to determine the effect of BMI (per SD increase) on quantitative imaging outcomes
146 based on previous GWASs.^{10,26} We used variants strongly associated with BMI ($p < 5 \times 10^{-8}$) and
147 applied stringent LD clumping ($r^2 < 0.0001$, 10000kb window). We used the IVW method as the
148 primary analysis and performed sensitivity analyses using the weighted median and MR-Egger
149 methods for significant IVW estimates. We assessed heterogeneity using Cochran’s Q statistic
150 and assessed directional horizontal pleiotropy using the Egger intercept.

151

152 **Results**

153 Baseline characteristics

154 We included a total of 16,349 participants from COPD-enriched and community-based cohorts
155 (Table 1). The community-based cohorts had an approximately even proportion of male and
156 female participants, whereas the COPD-enriched cohorts had more males than females. There
157 were substantial differences in smoking history and lung function among cohorts. The
158 distribution of visual emphysema severity among cohorts (Table S1-S6), and visual airway wall
159 thickening in COPDGene (Table S7) are shown in the Supplementary Results.

160 Performance of the PGS_{BMI}

161 The polygenic score of BMI (PGS_{BMI}) was significantly associated with measured BMI in all
162 cohorts (Table 2). However, the variance in BMI explained by the PGS_{BMI} differed substantially
163 among cohorts, and in general, did not perform as well in the AA cohorts as in the NHW cohorts.

164 Within MESA, the PGS_{BMI} had similar performance explaining BMI variation in the NHW,
165 Chinese, and Hispanic participants.

166 Associations between PGS_{BMI} and primary outcomes

167 In the random-effects meta-analysis of results across all cohorts (Figure 1), a standard deviation
168 increase of the PGS_{BMI} was associated with decreased emphysema as indicated by a lower
169 log-%LAA-950 ($\beta = -0.062$, $p = 7.6 \times 10^{-16}$) and a higher perc15 ($\beta = 2.27$, $p = 5.6 \times 10^{-8}$), and
170 increased AWT as indicated by a higher Pi10 ($\beta = 0.016$, $p = 6.3 \times 10^{-4}$) and WAP-seg ($\beta = 0.26$,
171 $p = 0.0013$). In the meta-analysis of the COPD-enriched cohorts, a higher PGS_{BMI} was associated
172 with a decreased risk of having a worse visual emphysema severity category (OR=0.89,
173 $p = 0.0080$). Consistent with this finding, in FHS participants, a higher PGS_{BMI} was associated
174 with a lower risk for the presence (versus none) of visual emphysema (OR=0.82, $p = 0.0034$). The
175 results of the association between the PGS_{BMI} and AWT measures were similar after adjusting
176 for CT lung volume in cohorts with this variable acquired (data not shown). We observed
177 significant heterogeneity in the effect estimates among cohorts for the emphysema and AWT
178 outcomes.

179 Associations between PGS_{BMI} and secondary outcomes

180 In the meta-analysis of results of COPDGene NHW and AA participants (Figure S1), a higher
181 PGS_{BMI} was associated with a decreased risk of having a worse severity category of visual
182 centrilobular (OR=0.91, $p = 1.2 \times 10^{-4}$) and paraseptal (OR=0.91, $p = 3.4 \times 10^{-4}$) emphysema, and an
183 increased risk for the presence of visual airway wall thickening (OR=1.17, $p = 0.0023$). In FHS
184 participants, a higher PGS_{BMI} was associated with a lower risk for the presence of visual
185 centrilobular (OR=0.81, $p = 0.048$) and paraseptal (OR=0.83, $p = 0.032$) emphysema. In the meta-

186 analysis across the COPDGene and FHS (Figure S2), a higher PGS_{BMI} was associated with
187 increased WAP of subsegmental bronchi ($\beta=0.17, p=3.6\times 10^{-4}$).

188 In COPDGene, the PGS_{BMI} was associated with previously identified emphysema- and airway-
189 predominant disease axes, and imaging subtypes (Table S8 and S9). A higher PGS_{BMI} was
190 associated with a higher baseline lung volume-adjusted lung density; however, there was no
191 significant association between the PGS_{BMI} and the longitudinal change in lung density (see
192 details in Supplementary Results).

193 Mendelian randomization analyses

194 The IVW MR analyses suggested a significant effect of genetically predicted BMI on perc15 (β
195 per SD increase of BMI=4.66, $p=8.5\times 10^{-4}$), Pi10 ($\beta=0.026, p=6.8\times 10^{-4}$), and WAP-seg ($\beta=0.80,$
196 $p=3.1\times 10^{-6}$) (Table 3, MR scatterplots in Figures S3-S6). The effect of BMI on perc15 and
197 WAP-seg remained significant using the weighted median and MR-Egger methods. We did not
198 detect significant heterogeneity or directional horizontal pleiotropy of the instrumental variants'
199 effect.

200

201 **Discussion**

202 In this multi-cohort analysis of adults from COPD-enriched and population-based cohorts, using
203 computed tomographic (CT) measures, we found that a polygenic score of BMI (PGS_{BMI}) was
204 associated with quantitative and visual emphysema and airway measures. Consistent with the
205 findings of measured BMI, the PGS_{BMI} was associated with decreased quantitative emphysema
206 measures, less severe visually assessed emphysema, and decreased risk for emphysema-
207 predominant disease axis and subtypes. Conversely, it was associated with increased quantitative

208 airway wall thickness (AWT) measures and visual airway wall thickening, as well as a higher
209 risk for airway-predominant disease axis and subtypes.

210 Automated quantification and visual interpretation of imaging characteristics capture
211 distinct aspects and pathogenesis of emphysema and airway disease and provide complementary
212 information on these phenotypes.^{24,25} Quantitative measures catch subtle radiodensity differences
213 beyond visual detection and thus provide high measurement sensitivity. However, it is important
214 to note that chest wall soft tissues, associated with BMI, could lead to variation in CT beam
215 attenuation and thus affect the radiodensity of lung structures. In contrast, visual measures
216 additionally capture morphological features, such as the size, type, and distribution of low
217 attenuation areas, and can differentiate emphysematous lesions from other imaging
218 abnormalities. Thus, visually assessed emphysema may be less susceptible to the BMI-related
219 artifact compared to quantitative emphysema measures. Restrictive effects of BMI on the lungs
220 may lead to variation in inspiration at CT scanning and affect airway lumen diameters. However,
221 the association between the PGS_{BMI} and AWT measures remained when CT lung volume was
222 additionally adjusted. Despite the potential biases introduced by BMI-related artifacts, these
223 approaches helped to enhance the validity of our findings. Further studies using histological
224 measures of emphysema and AWT may be warranted to confirm our findings; however, such
225 studies are likely limited to a small sample size.

226 An association between low BMI and emphysema has been well described. However,
227 cachexia is a well-known phenomenon in advanced COPD. Thus, whether low BMI itself is a
228 risk factor for emphysema is not known. A previous study among participants with COPD have
229 demonstrated associations of the *FTO* (fat mass and obesity-associated) gene-associated variants
230 with BMI and emphysema;¹¹ however whether these findings hold true for a set of BMI-related

231 variants, for additional imaging phenotypes and in larger cohorts, is not known. Our finding of
232 an inverse association between the PGS_{BMI} and emphysema suggests that a genetic
233 predisposition to lower BMI is a risk factor for emphysema. BMI polygenic scores derived from
234 GWASs of adult BMI explain BMI variation in early childhood,²⁷ indicating that adult BMI-
235 related genetic variants could exert effects on affected traits in a person's early life. In humans,
236 the number of alveoli increases substantially during the first two years of life and continues to
237 increase at a slower rate until adolescence.²⁸ Individuals with larger lungs have been shown to
238 have lower lung density compared to those with smaller lungs, with implications of
239 anthropometric traits affecting alveolar growth and structure.²⁹ Recent studies showed that genes
240 regulating organ size (e.g., skeletomuscular development) were enriched in lung development,³⁰
241 and were shared between BMI and lung function.³¹ In extreme conditions, relatively young
242 individuals who died of starvation or were severely malnourished demonstrated evidence of
243 emphysema.^{32,33} Similarly, in mouse studies, calorie restriction resulted in alveolar loss and gas-
244 exchange unit enlargement, consistent with histological emphysema, whereas subsequent
245 refeeding led to alveolar regeneration.³⁴ It was thus hypothesized that adaptive tissue
246 degeneration of alveoli could occur in response to calorie restriction and decreased oxygen
247 consumption. Biologic pathways that are activated in the setting of reduced calorie intake may be
248 related to genetic variants leading to low BMI. An analysis of ECLIPSE showed that in people
249 with COPD, emphysema was associated with low BMI and multi-organ extrapulmonary tissue
250 loss, indicating a phenotype characterized by a defect in tissue repair and maintenance.³⁵ The
251 role of BMI-related genetics and related biological pathways in alveolar tissue growth,
252 maintenance, and repair remains to be elucidated.

253 In contrast to emphysema, our finding of an association of a higher PGS_{BMI} with
254 increased AWT implies a possible causal effect of obesity on bronchial wall thickening. Obesity
255 is associated with systemic inflammation which affects multiple organs. In adults with asthma,
256 obesity was associated with airway inflammation characterized by elevated bronchial
257 submucosal eosinophils and sputum interleukin-5.³⁶ In addition to the effect of circulating
258 inflammatory cytokines released by remote adipocytes, adipose tissue within the airway wall
259 may play a role in airway inflammation. Of note, a recent study of post-mortem lungs showed
260 that adipose tissue was present in large airways, and was positively associated with BMI, number
261 of inflammatory cells in the airway, and histological AWT.³⁷ In animal studies, adipose cells
262 were found in the airways of porcine lungs and functioned as a local source of inflammatory
263 adipokines in the airway.³⁸ Another study showed that obese adipocytes promoted inflammation
264 of airway epithelial cells which was attenuated by weight loss in mice.³⁹ Our findings raise the
265 possibility that modification of BMI may affect airway disease among obese individuals, which
266 needs to be further examined in clinical trials.

267 We used a PGS as the primary exposure given a higher phenotypic variance explained
268 compared to an individual genetic variant. A PGS, comprising genetic variants fixed at
269 conception, along with Mendelian randomization (MR) analyses, can provide support for
270 causality.¹² We studied variants identified from very large studies of BMI in population-based
271 cohorts (not enriched for COPD or emphysema) and used MR methods that are robust to some
272 forms of pleiotropy. However, we acknowledge that statements of causality in genetics can be
273 complicated by effects that may occur outside the studied exposure and pleiotropy. It is worth
274 noting that the effect size estimates from the PGS and the MR analyses are not directly

275 comparable because the exposure variables are on different scales. Nonetheless, the primary goal
276 of this study was not to quantify but to identify causal effects.

277 Additional limitations of the study include that different CT imaging protocols, data
278 processing software, and visual emphysema scoring methods were utilized among study cohorts,
279 which inevitably introduced heterogeneity and noise in the imaging measures. However, we still
280 found significant results when combining estimates across cohorts using random-effects meta-
281 analysis. BMI is a crude measure of adiposity and does not distinguish between the relative
282 content or distribution of bone, muscle, or adipose tissue (i.e., body composition). Our PGS_{BMI}
283 was derived from BMI GWASs using predominantly general population cohorts with European
284 ancestry. This precluded our ability to examine the effect of variants of non-European ancestry,
285 of rare allele frequency, or in a specific disease state. FHS contributed approximately 1% to the
286 sample populations of the BMI GWAS where our PGS_{BMI} was derived, which may result in
287 overfitting of the PGS_{BMI} in FHS participants. MESA had a considerable variant drop-out which
288 may explain the relatively lower performance of the PGS_{BMI} among MESA cohorts. Our PGS_{BMI}
289 did not perform as well in the African Americans as in the non-Hispanic white participants,
290 which is consistent with the known issue of low portability of PGSs across ancestry.⁴⁰ The PGS
291 portability issue is thought primarily stemming from different linkage disequilibrium patterns
292 and allele frequencies between populations, and highlights the importance of conducting multi-
293 ancestry GWASs and constructing multi-ancestry PGSs in the future. Further, Chinese and
294 Hispanic participants were only present in MESA with a relatively small sample size. The
295 generalizability of our results to individuals of non-European ancestry needs to be confirmed.

296 To conclude, a higher BMI polygenic score is associated with decreased emphysema and
297 increased airway wall thickness among persons with and without COPD. Our data suggest that

298 genetic factors related to BMI also influence emphysema and airway disease, indicating potential
299 shared genetic underpinnings of anthropometric and adiposity traits with COPD phenotypes.
300 Future studies integrating genetics of body composition traits beyond BMI, as well as multi-
301 omics data from blood and lung sources, are likely needed to further unravel the biological
302 pathways underlying these associations. This exploration may lead to the discovery of novel
303 clinical markers and potential druggable targets.

304 References

- 305 1. Castaldi PJ, Dy J, Ross J, et al. Cluster analysis in the COPDGene study identifies subtypes
306 of smokers with distinct patterns of airway disease and emphysema. *Thorax* 2014; **69**(5): 415-
307 22.
- 308 2. Kinney GL, Santorico SA, Young KA, et al. Identification of Chronic Obstructive
309 Pulmonary Disease Axes That Predict All-Cause Mortality: The COPDGene Study. *Am J Epidemiol*
310 2018; **187**(10): 2109-16.
- 311 3. Johannessen A, Skorge TD, Bottai M, et al. Mortality by level of emphysema and airway
312 wall thickness. *Am J Respir Crit Care Med* 2013; **187**(6): 602-8.
- 313 4. Oelsner EC, Carr JJ, Enright PL, et al. Per cent emphysema is associated with respiratory
314 and lung cancer mortality in the general population: a cohort study. *Thorax* 2016; **71**(7): 624-32.
- 315 5. Oelsner EC, Smith BM, Hoffman EA, et al. Prognostic Significance of Large Airway
316 Dimensions on Computed Tomography in the General Population. The Multi-Ethnic Study of
317 Atherosclerosis (MESA) Lung Study. *Ann Am Thorac Soc* 2018; **15**(6): 718-27.
- 318 6. Blue bloater: pink puffer. *Br Med J* 1968; **2**(5606): 677.
- 319 7. Rutten EP, Grydeland TB, Pillai SG, et al. Quantitative CT: Associations between
320 Emphysema, Airway Wall Thickness and Body Composition in COPD. *Pulm Med* 2011; **2011**:
321 419328.
- 322 8. Ogawa E, Nakano Y, Ohara T, et al. Body mass index in male patients with COPD:
323 correlation with low attenuation areas on CT. *Thorax* 2009; **64**(1): 20-5.
- 324 9. Locke AE, Kahali B, Berndt SI, et al. Genetic studies of body mass index yield new insights
325 for obesity biology. *Nature* 2015; **518**(7538): 197-206.
- 326 10. Yengo L, Sidorenko J, Kemper KE, et al. Meta-analysis of genome-wide association
327 studies for height and body mass index in approximately 700000 individuals of European
328 ancestry. *Hum Mol Genet* 2018; **27**(20): 3641-9.
- 329 11. Wan ES, Cho MH, Boutaoui N, et al. Genome-wide association analysis of body mass in
330 chronic obstructive pulmonary disease. *Am J Respir Cell Mol Biol* 2011; **45**(2): 304-10.
- 331 12. Richardson TG, Harrison S, Hemani G, Davey Smith G. An atlas of polygenic risk score
332 associations to highlight putative causal relationships across the human phenome. *Elife* 2019; **8**.
- 333 13. Regan EA, Hokanson JE, Murphy JR, et al. Genetic epidemiology of COPD (COPDGene)
334 study design. *COPD* 2010; **7**(1): 32-43.
- 335 14. Vestbo J, Anderson W, Coxson HO, et al. Evaluation of COPD Longitudinally to Identify
336 Predictive Surrogate End-points (ECLIPSE). *Eur Respir J* 2008; **31**(4): 869-73.
- 337 15. Weinmann GG, Chiang YP, Sheingold S. The National Emphysema Treatment Trial
338 (NETT): a study in agency collaboration. *Proc Am Thorac Soc* 2008; **5**(4): 381-4.
- 339 16. Zhu G, Warren L, Aponte J, et al. The SERPINE2 gene is associated with chronic
340 obstructive pulmonary disease in two large populations. *Am J Respir Crit Care Med* 2007;
341 **176**(2): 167-73.
- 342 17. Kannel WB, Feinleib M, McNamara PM, Garrison RJ, Castelli WP. An investigation of
343 coronary heart disease in families. The Framingham offspring study. *Am J Epidemiol* 1979;
344 **110**(3): 281-90.

- 345 18. Splansky GL, Corey D, Yang Q, et al. The Third Generation Cohort of the National Heart,
346 Lung, and Blood Institute's Framingham Heart Study: design, recruitment, and initial
347 examination. *Am J Epidemiol* 2007; **165**(11): 1328-35.
- 348 19. Bild DE, Bluemke DA, Burke GL, et al. Multi-Ethnic Study of Atherosclerosis: objectives
349 and design. *Am J Epidemiol* 2002; **156**(9): 871-81.
- 350 20. Zhang J, Moll M, Hobbs BD, et al. Genetically Predicted Body Mass Index and Mortality
351 in COPD. *Am J Respir Crit Care Med* 2024.
- 352 21. Bhatt SP, Washko GR, Hoffman EA, et al. Imaging Advances in Chronic Obstructive
353 Pulmonary Disease. Insights from the Genetic Epidemiology of Chronic Obstructive Pulmonary
354 Disease (COPDGene) Study. *Am J Respir Crit Care Med* 2019; **199**(3): 286-301.
- 355 22. Lynch DA, Austin JH, Hogg JC, et al. CT-Definable Subtypes of Chronic Obstructive
356 Pulmonary Disease: A Statement of the Fleischner Society. *Radiology* 2015; **277**(1): 192-205.
- 357 23. Grydeland TB, Dirksen A, Coxson HO, et al. Quantitative computed tomography
358 measures of emphysema and airway wall thickness are related to respiratory symptoms. *Am J*
359 *Respir Crit Care Med* 2010; **181**(4): 353-9.
- 360 24. Halper-Stromberg E, Cho MH, Wilson C, et al. Visual Assessment of Chest Computed
361 Tomographic Images Is Independently Useful for Genetic Association Analysis in Studies of
362 Chronic Obstructive Pulmonary Disease. *Ann Am Thorac Soc* 2017; **14**(1): 33-40.
- 363 25. Park J, Hobbs BD, Crapo JD, et al. Subtyping COPD by Using Visual and Quantitative CT
364 Imaging Features. *Chest* 2020; **157**(1): 47-60.
- 365 26. Cho MH, Castaldi PJ, Hersh CP, et al. A Genome-Wide Association Study of Emphysema
366 and Airway Quantitative Imaging Phenotypes. *Am J Respir Crit Care Med* 2015; **192**(5): 559-69.
- 367 27. Khera AV, Chaffin M, Wade KH, et al. Polygenic Prediction of Weight and Obesity
368 Trajectories from Birth to Adulthood. *Cell* 2019; **177**(3): 587-96 e9.
- 369 28. Herring MJ, Putney LF, Wyatt G, Finkbeiner WE, Hyde DM. Growth of alveoli during
370 postnatal development in humans based on stereological estimation. *Am J Physiol Lung Cell Mol*
371 *Physiol* 2014; **307**(4): L338-44.
- 372 29. Robert HB, Robert AW, Kirk G, Drummond MB, Mitzner W. Lung density changes with
373 growth and inflation. *Chest* 2015; **148**(4): 995-1002.
- 374 30. Portas L, Pereira M, Shaheen SO, et al. Lung Development Genes and Adult Lung
375 Function. *Am J Respir Crit Care Med* 2020; **202**(6): 853-65.
- 376 31. Zhu Z, Li J, Si J, et al. A large-scale genome-wide association analysis of lung function in
377 the Chinese population identifies novel loci and highlights shared genetic aetiology with
378 obesity. *Eur Respir J* 2021; **58**(4).
- 379 32. Coxson HO, Chan IH, Mayo JR, Hlynsky J, Nakano Y, Birmingham CL. Early emphysema in
380 patients with anorexia nervosa. *Am J Respir Crit Care Med* 2004; **170**(7): 748-52.
- 381 33. Stein J, Fenigstein H. Pathological anatomy of hunger disease. In: Winick M, ed. Hunger
382 disease: studies by the Jewish physicians in the Warsaw Ghetto: current concepts in nutrition.
383 New York: John Wiley & Sons; 1979: 207-29.
- 384 34. Massaro D, Massaro GD, Baras A, Hoffman EP, Clerch LB. Calorie-related rapid onset of
385 alveolar loss, regeneration, and changes in mouse lung gene expression. *Am J Physiol Lung Cell*
386 *Mol Physiol* 2004; **286**(5): L896-906.
- 387 35. Celli BR, Locantore N, Tal-Singer R, et al. Emphysema and extrapulmonary tissue loss in
388 COPD: a multi-organ loss of tissue phenotype. *Eur Respir J* 2018; **51**(2).

- 389 36. Scott HA, Ng SH, McLoughlin RF, et al. Effect of obesity on airway and systemic
390 inflammation in adults with asthma: a systematic review and meta-analysis. *Thorax* 2023.
- 391 37. Elliot JG, Donovan GM, Wang KCW, Green FHY, James AL, Noble PB. Fatty airways:
392 implications for obstructive disease. *Eur Respir J* 2019; **54**(6).
- 393 38. Wang CJ, Noble PB, Elliot JG, Choi YS, James AL, Wang KCW. Distribution, composition,
394 and activity of airway-associated adipose tissue in the porcine lung. *Am J Physiol Lung Cell Mol*
395 *Physiol* 2023; **324**(2): L179-L89.
- 396 39. Ather JL, Van Der Vliet KE, Mank MM, Reed LF, Dixon AE, Poynter ME. Obese adipose
397 tissue modulates proinflammatory responses of mouse airway epithelial cells. *Am J Physiol*
398 *Regul Integr Comp Physiol* 2021; **321**(1): R79-R90.
- 399 40. Duncan L, Shen H, Gelaye B, et al. Analysis of polygenic risk score usage and
400 performance in diverse human populations. *Nat Commun* 2019; **10**(1): 3328.
- 401

Table 1. Baseline characteristics of participants in each cohort (n=16,349).

Variable	COPDGene NHW (n=5604)	COPDGene AA (n=1793)	ECLIPSE (n=1596)	NETT (n=374)	GenKOLS (n=774)	FHS (n=3167)	MESA NHW (n=1190)	MESA AA (n=802)	MESA Chinese (n=406)	MESA Hispanic (n=643)
Age (year)	62.3 (13.5)	53.2 (9.5)	64.0 (10.0)	68.0 (7.0)	59.3 (15.8)	49.0 (14.0)	70.0 (15.0)	69.0 (14.0)	68.0 (15.0)	67.0 (14.0)
Sex (male)	2934 (52.4%)	1032 (57.6%)	1046 (65.5%)	239 (63.9%)	461 (59.6%)	1652 (52.2%)	589 (49.5%)	366 (45.6%)	207 (51.0%)	307 (47.7%)
Current smoker	2167 (38.7%)	1420 (79.2%)	550 (34.5%)	0 (0%)	356 (46.0%)	254 (8.0%)	83 (7.0%)	91 (11.3%)	14 (3.4%)	40 (6.2%)
Ever smoker	100%	100%	100%	100%	100%	1520 (48.0%)	721 (60.6%)	478 (59.6%)	117 (28.8%)	330 (51.3%)
Pack-years of smoking *	42.0 (28.8)	35.3 (24.3)	45.0 (27.0)	60.8 (40.0)	22.3 (20.9)	12.0 (20.3)	16.5 (29.5)	13.0 (26.6)	8.5 (21.0)	6.3 (16.7)
BMI (kg/m ²)	27.9 (7.5)	27.8 (8.4)	26.2 (6.8)	25.0 (5.0)	25.5 (5.3)	27.0 (6.4)	27.1 (6.5)	29.5 (7.4)	23.9 (4.2)	28.8 (6.4)
FEV ₁ % predicted	77.9 (38.1)	88.9 (32.6)	46.3 (24.1)	28.0 (10.0)	76.1 (40.1)	97.9 (17.4)	93.5 (22.1)	93.7 (24.8)	94.3 (21.1)	101.9 (23.5)
FEV ₁ /FVC	0.69 (0.24)	0.76 (0.19)	0.44 (0.17)	0.32 (0.09)	0.68 (0.26)	0.76 (0.09)	0.73 (0.10)	0.76 (0.11)	0.75 (0.09)	0.77 (0.09)
%LAA-950	3.1 (8.6)	1.2 (3.5)	16.5 (18.1)	14.8 (16.4)	1.8 (8.4)	2.1 (2.4)	2.0 (3.4)	1.3 (2.1)	1.5 (2.6)	0.8 (1.5)
perc15	-924.0 (33.7)	-907.0 (36.9)	-953.0 (34.0)	-949.0 (24.0)	-912.0 (48.3)	-910.0 (27.8)	-918.5 (26.0)	-907.9 (31.6)	-916.6 (26.4)	-903.5 (33.8)
Pi10	3.66 (0.15)	3.69 (0.16)	4.39 (0.25)	4.55 (0.58)	4.82 (0.45)	3.64 (0.25)	4.27 (0.29)	4.19 (0.27)	4.18 (0.24)	4.26 (0.27)
WAP-seg	61.1 (4.0)	61.4 (4.2)	65.8 (5.5)	73.2 (4.5)	75.4 (3.9)	52.9 (6.1)	61.6 (4.4)	61.1 (4.5)	62.3 (4.2)	61.9 (4.0)

Continuous variables are presented with the median (interquartile range). Categorical variables are presented with count (percentage).

* Among ever-smokers.

COPDGene = Genetic Epidemiology of COPD; ECLIPSE = Evaluation of COPD Longitudinally to Identify Predictive Surrogate Endpoints; NETT = National Emphysema Treatment Trial; GenKOLS = Genetics of Chronic Obstructive Lung Disease; FHS = Framingham Heart Study; MESA = Multi-Ethnic Study of Atherosclerosis; NHW = non-Hispanic white; AA = African American.

BMI = body mass index; FEV₁ = forced expiratory volume in 1s; FVC = forced vital capacity; %LAA-950 = percent of low attenuation area ≤ -950 Hounsfield units; perc15 = the 15th percentile of the lung attenuation histogram; Pi10 = the square root of wall area of a 10-mm lumen perimeter airway; WAP-seg = the mean wall area percent of segmental bronchi.

Table 2. Associations of the polygenic score of BMI (PGS_{BMI}) with measured BMI (kg/m^2) in each study cohort.

Cohort	Number of participants	PGS_{BMI}		
		Beta (per standard deviation)	P value	Variance of BMI explained
COPDGene NHW	5604	1.98	1.4×10^{-141}	10.6%
COPDGene AA	1793	1.19	1.4×10^{-6}	1.2%
ECLIPSE	1596	1.58	2.3×10^{-30}	7.5%
NETT	374	0.90	9.8×10^{-7}	6.3%
GenKOLS	774	1.38	5.2×10^{-20}	9.7%
FHS	3167	2.43	6.4×10^{-168}	21.0%
MESA NHW	1190	1.29	5.3×10^{-15}	4.8%
MESA AA	802	1.01	5.5×10^{-4}	2.1%
MESA Chinese	406	0.72	3.5×10^{-5}	3.9%
MESA Hispanic	643	2.46	3.0×10^{-8}	4.4%

COPDGene = Genetic Epidemiology of COPD; ECLIPSE = Evaluation of COPD Longitudinally to Identify Predictive Surrogate Endpoints; NETT = National Emphysema Treatment Trial; GenKOLS = Genetics of Chronic Obstructive Lung Disease; FHS = Framingham Heart Study; MESA = Multi-Ethnic Study of Atherosclerosis; NHW = non-Hispanic white; AA = African American; BMI = body mass index.

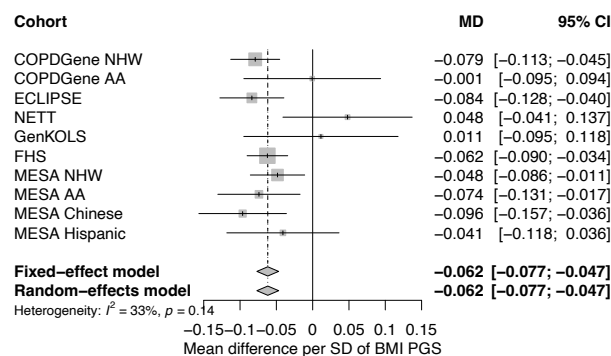
Table 3. Causal effect estimates of BMI on emphysema and airway wall thickness measures.

Outcome	MR methods	Variant number	Effect estimate*	p-value
Log-%LAA-950	IVW	321	-0.079	0.26
perc15	IVW	321	4.66	8.5×10^{-4}
	Weighted median	321	5.71	0.0090
	MR-Egger	321	10.63	0.0025
Pi10	IVW	321	0.026	6.8×10^{-4}
	Weighted median	321	0.026	0.034
	MR-Egger	321	0.019	0.31
WAP-seg	IVW	321	0.80	3.1×10^{-6}
	Weighted median	321	0.89	0.0014
	MR-Egger	321	1.20	0.0061

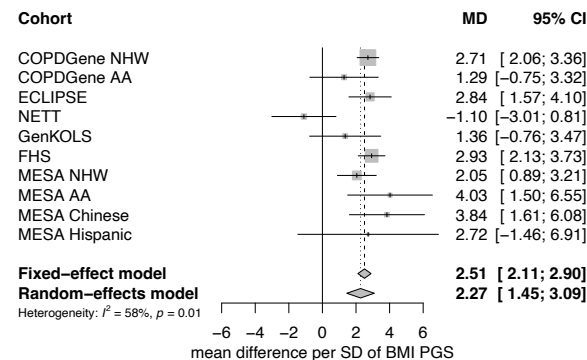
* Effect estimate was based on per one standard deviation increase of BMI.

BMI = body mass index; MR = Mendelian randomization; IVW = inverse variance weighted; log-%LAA-950 = log transformed percent of low attenuation area \leq -950 Hounsfield units; perc15 = the 15th percentile of the lung attenuation histogram; Pi10 = the square root of wall area of a 10-mm lumen perimeter airway; WAP-seg = the mean wall area percent of segmental bronchi.

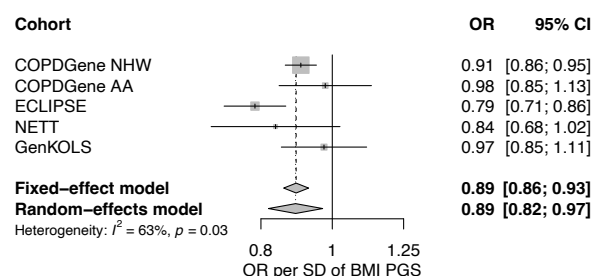
Log-%LAA-950



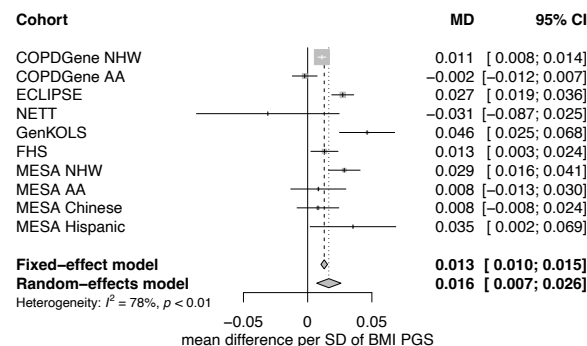
Perc15



Visual emphysema



Pi10



WAP-seg

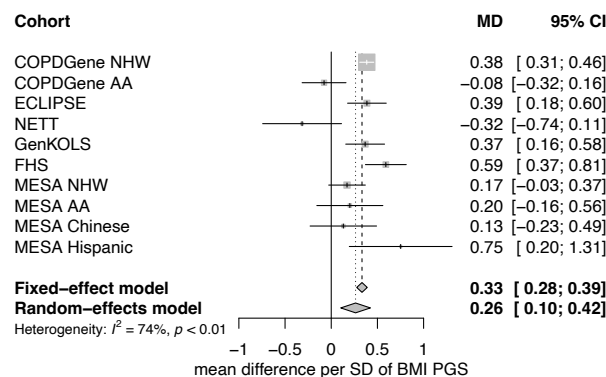


Figure 1. Associations of the body mass index (BMI) polygenic score (PGS) with computed tomographic emphysema and airway wall thickness measures among study cohorts. %LAA-950 = percent of low attenuation area \leq -950 Hounsfield units; Perc15 = the 15th percentile of the lung attenuation histogram; Pi10 = the square root of wall area of a 10-mm lumen perimeter airway; WAP-seg = the mean wall area percent of segmental bronchi; MD = mean difference; OR = odds ratio; SD = standard deviation.