

# Clade I Mpox virus genomic diversity in the Democratic Republic of the Congo, 2018 - 2024: Predominance of Zoonotic Transmission

## **Authors:**

Eddy Kinganda-Lusamaki <sup>1,2,3,\*</sup>, Adrienne Amuri-Aziza <sup>1,\*</sup>, Nicolas Fernandez <sup>3</sup>, Jean-Claude Makangara-Cigolo <sup>1,2,8</sup>, Catherine Pratt <sup>4</sup>, Emmanuel Hasivirwe Vakaniaki <sup>1</sup>, Nicole A. Hoff <sup>5</sup>, Gradi Luakanda <sup>1</sup>, Prince Akil-Bandali <sup>1</sup>, Sabin Sabiti Nundu <sup>1</sup>, Noella Mulopo-Mukanya <sup>6</sup>, Michel Ngimba <sup>6</sup>, Brigitte Modadra-Madakpa <sup>6</sup>, Ruth Diavita <sup>1</sup>, Princesse Paku <sup>1</sup>, Elisabeth Pukuta-Simbu <sup>1</sup>, Sydney Merritt <sup>5</sup>, Áine O'Toole <sup>7</sup>, Nicola Low <sup>8</sup>, Antoine Nkuba <sup>1,2,3</sup>, Hugo Kavunga <sup>6</sup>, Robert Shongo <sup>9</sup>, Laurens Liesenborghs <sup>10</sup>, Tony Wawina-Bokalanga <sup>1,2,10</sup>, Koen Vercauteren <sup>10</sup>, Daniel Mukadi-Bamuleka <sup>1,2,6</sup>, Lorenzo Subissi <sup>11</sup>, Jean-Jacques Muyembe <sup>1,2</sup>, Jason Kindrachuk <sup>12</sup>, Ahidjo Ayouba <sup>3</sup>, Andrew Rambaut <sup>7</sup>, Eric Delaporte <sup>3</sup>, Sofonias Tessema <sup>13,14</sup>, Anne W. Rimoin <sup>5</sup>, Lisa E. Hensley <sup>15</sup>, Placide Mbala-Kingebeni <sup>1,2,\*\*</sup>, Martine Peeters <sup>3,\*\*</sup>, Steve Ahuka-Mundeke <sup>1,2,\*\*</sup>

## **Affiliations:**

1. Institut National de Recherche Biomédicale (INRB), Kinshasa, Democratic Republic of the Congo
2. Service de Microbiologie, Département de Biologie Médicale, Cliniques Universitaires de Kinshasa, Université de Kinshasa, Kinshasa, Democratic Republic of the Congo
3. TransVIHMI, Université de Montpellier, INSERM, IRD, Montpellier, France
4. Biosurv International, Salisbury, England, United Kingdom
5. Department of Epidemiology, Jonathan and Karin Fielding School of Public Health, University of California, Los Angeles, CA, USA
6. Rodolphe Merieux INRB-Goma Laboratory, Goma, Democratic Republic of the Congo
7. Institute of Ecology and Evolution, University of Edinburgh, Edinburgh, UK.
8. Graduate School of Cellular and Biomedical Sciences, University of Bern, Bern, Switzerland

**NOTE: This preprint reports new research that has not been certified by peer review and should not be used to guide clinical practice.**

9. PNLFHMPX, Hemorrhagic Fever and Mpox Program, Ministry of Health, Kinshasa, Democratic Republic of the Congo
10. Department of Clinical Sciences, Institute of Tropical Medicine, Antwerp, Belgium
11. World Health Organization, Geneva, Switzerland
12. Department of Medical Microbiology & Infectious Diseases, University of Manitoba, Winnipeg, Manitoba, Canada:
13. Africa Centers for Disease Control and Prevention (Africa CDC), Addis Ababa, Ethiopia
14. ANRS Emerging Infectious Diseases (ANRS MIE), Inserm, Paris, France.
15. US Department of Agriculture, Manhattan, KS, USA

*\* Contributed equally*

*\*\* Jointly supervised*

*Corresponding authors:*

***Eddy Kinganda-Lusamaki (eddylusamaki@gmail.com), Martine Peeters (martine.peeters@ird.fr)***

Conflict of Interest: The authors declare to have no conflict of interest.

## **ABSTRACT**

### **Background:**

Recent reports raise concerns on the changing epidemiology of mpox in the Democratic Republic of the Congo (DRC), with increasing case counts, sexual contact-mediated clusters, and sustained human-to-human transmission driven by a novel monkeypox virus (MPXV) subclade, Clade Ib. Thus far, only a limited number of Clade I MPXV genomes have been characterized, and they are not representative across different regions and time periods.

### **Methods:**

We conducted whole genome sequencing of 603 mpox-positive samples that were collected from 581 patients between 2018-2024 in 17/26 provinces of the DRC.

### **Results:**

Genome coverage was at least 70% for 423/603 (70.1%) samples and near full-length MPXV genomes (>90% coverage) were obtained for 348/603 (57.7%) samples. All newly generated MPXV sequences belonged to Clade I, among which 17 were Clade Ib strains, all from patients infected in 2024 in the South-Kivu province. The large majority (95%) of the new strains fall within previously described Clade Ia groups and potential new groups have also been observed. Genetically diverse MPXV lineages co-circulate in small geographic areas during the same outbreak suggesting multiple zoonotic introductions over a short period from one or multiple reservoir species. The low number of APOBEC3 mutations found among Clade Ia suggests that most human mpox cases are probably linked to zoonotic transmissions. Recent identification of mpox cases in Kinshasa shows multiple virus lineages being present within a large urban center.

**Conclusion:** The mpox epidemic in the DRC exhibits two distinct patterns. In traditional endemic regions, the epidemic in DRC is predominated by zoonotic spillover events involving Clade Ia. Conversely, in the eastern part of the country, the Clade Ib outbreak is driven by human-to-human transmission highlighting the need for a coordinated response effort at the national, regional and international levels.

**Key words :** Mpox, virus, genetic diversity, Democratic Republic of the Congo, Genomic, zoonotic spillover

## INTRODUCTION

Mpox, a viral zoonosis caused by Mpox virus (MPXV), is endemic within regions of West and Central Africa (Gessain et al 2022). The first case of human mpox was identified in 1970 in the Democratic Republic of the Congo (DRC) (Ladnyj et al., 1972). Since its discovery, cases have been reported in rural and rainforest regions of the Congo Basin in DRC, its neighbouring countries, and in West Africa. To date, thousands of human cases have been reported in Africa, with the highest burden in DRC (>95% of reported cases), where a national surveillance system has been in place since 2001 (Sklenovská and Van Ranst, 2018; Beer and Rao, 2019; Bunge et al., 2022; Gong et al., 2022; Rimoin et al., 2010; Sklenovská, 2020). Additionally, sporadic travel- or wildlife-associated cases have been documented in non-endemic regions with an epidemiological link to African foci (Reed et al 2004, Erez et al., 2019; Ng et al., 2019; Vaughan et al., 2018). However, since May 2022, a large mpox outbreak affected 116 non-endemic countries with >90,000 cases worldwide, as well as the declaration of a public health emergency of international concern by the World Health Organization (WHO) (CDC, 2022; WHO, Geneva, 2022). Despite a significant decrease in the number of cases worldwide (WHO, 2023a), this outbreak is still ongoing with cases reported in South-East Asia and Western Pacific (as of January 2023), South Africa (as of June 2024) (WHO, 2024a) and North America (Wertheim et al., 2024). Historically, most mpox outbreaks in Africa have resulted from zoonotic spillover events followed by limited human-to-human transmission through close contact, but during the global outbreak in 2022, mpox cases were associated with sexual contact and dense sexual networks (Sharif et al., 2023).

MPXV is divided into two major clades: Clade I and II in central and West Africa, respectively (Happi et al. Plos Biol, 2022). Cameroon is the only country where clade I and II are known to co-circulate with clades I and II segregated to regions east and west of the

country, respectively (Djuici et al 2024). Clade II is subdivided into Clade IIa that contains the viruses from West Africa, and Clade IIb regroups all the sequences from the 2022 global mpox outbreak as well as sequences obtained from Nigeria (Cabanillas et al., 2023; Happi et al., 2022; WHO, 2022a, 2022b). As of now, only sporadic clade IIa mpox cases have been reported outside Africa, and were associated with travel and wild rodent importation (Mauldin et al, 2022; Reed et al, 2004). Travel-events following the largest mpox outbreak in Nigeria (2017-19) allowed the virus to move to urban cities and spread beyond the country, followed by global spread in 2022 of Clade IIb (O'Toole et al ; Bunge et al., 2022; Hadfield et al., 2018; Sagulenko et al., 2018).

In DRC, where most mpox cases are reported, the number of suspected mpox cases has doubled in recent years rising from 3,000 cases in 2021 to 5,600 in 2022, and >14,000 in 2023 (WHO, 2024b). Since 2023, mpox cases have been steadily expanding across DRC provinces, including new foci in large urban areas and transportation hubs, such as Kinshasa (the capital city), Bukavu, and Goma in eastern DRC (SGI-Mpox, 2024). This has also included the identification of Clade I-associated mpox cases among East African countries where the virus has not previously been reported including Burundi, Rwanda, Uganda, and Kenya as well as the declaration of a PHEIC by the Africa CDC for the first time. Moreover, sexual contact-associated transmission has been reported in multiple regions of the country including Kwango province (Kibungu et al., 2024) and a large outbreak in South-Kivu province, a non-endemic region for mpox (Vakaniaki et al., 2024). The eastern DRC outbreak was first reported in September 2023 in Kamituga, a mining region, where 297 mpox-confirmed cases and 4 deaths were reported as of the first week of June 2024 (27<sup>th</sup> Epidemiological week), before spreading to other cities in South-Kivu (Bukavu and Uvira), North-Kivu (Goma) provinces and countries in the eastern region such as Rwanda, Uganda, Kenya and Burundi (INRB, 2024;

Oude Munnink et al., 2024; SGI-Mpox, 2024; WHO, 2024). Genomic analysis of MPXV strains in eastern DRC demonstrated a distinct subclade within Clade I, designated as Clade Ib. Signatures of APOBEC3-mediated mutation were observed which suggests human-to-human transmission and clinic-epidemiological data supports that the virus was likely being spread through sexual-contact (Vakaniaki et al., 2024). However, this genomic sequencing analysis included a limited number of genomes that only belong to five out of 22 affected provinces in the DRC.

In this study, we sequenced and characterized MPXV from samples collected between february 2018 and march 2024 as part of the national surveillance network, to further investigate the ongoing national mpox outbreak across the country in order to better document; (i) the genetic diversity of clade I MPXV in DRC and (ii) whether the increase in the number of mpox cases in DRC is due to zoonotic transmission or viral evolution that has been linked to human adaptation and sustained human-to-human transmission.

## **MATERIALS AND METHODS**

### ***Ethics statement***

Samples were collected as part of national diagnostic and surveillance activities. Authorization for secondary use of the samples for research in this study was obtained from the Ethics Committee of Kinshasa School of Public Health (ESP-UNIKIN, Number ESP/CE/05/2023). The study samples and data were de-identified before genomic and epidemiological analyses.

### ***Samples***

Samples were collected as part of the national Integrated Disease Surveillance and Response (IDSR) program. Cases of mpox were identified by each health zone's surveillance team. Skin

lesions (vesicle or scab), blood or oropharyngeal swab, were collected from mpox-suspected individuals, according to the ISDR (DRC) and WHO standard definition (<https://www.who.int/emergencies/outbreak-toolkit/disease-outbreak-toolboxes/mpox-outbreak-toolbox>). We collected information on age, sex, collection time, time of onset of clinical signs, health zone and province, using the national investigation form. The biological samples were shipped via routine surveillance circuits from health facilities to the provincial level hub and finally from the Provincial Health division (DPS) to the national reference laboratory (Institut National de Recherche Biomédicale, INRB) in Kinshasa, for PCR confirmation of mpox. Samples from the Eastern part of the country were shipped to the Rodolphe Mérieux INRB Goma laboratory for PCR confirmation.

#### ***DNA extraction and molecular testing for mpox diagnosis***

Skin lesion swabs were suspended in 1 mL of molecular biology grade PBS 1X prior to inactivation and nucleic acid extraction. DNA was extracted using the QIAamp® DNA Mini kit (Qiagen, Hilden, Germany) or RADI kit (KH Medical, Seoul, South Korea) following the manufacturer's instructions. Samples were tested for mpox by real-time PCR using either a panel of primers able to detect Orthopoxviruses (Kulesh et al., 2004; Li et al., 2010) or with specific MPXV PCR detection assays (RADIPREP kits (<http://www.khmedical.co.kr/monkeypox04.php>) or Bioperfectus (<https://www.bioperfectus.com/ProductDetail/MonkeypoxVirusRealTimePCRKit>)).

#### ***Whole genome sequencing of MPXV***

Samples with sufficient volume that tested positive for mpox and by preference with Cycle threshold (Ct) values  $\leq 30$  were selected for Whole Genome Sequencing (WGS). The Illumina DNA Prep protocol with probe enrichment was used to generate enriched libraries for dual-index paired-end sequencing, using either the comprehensive pan-viral or a custom panel



designed for high- consequence viruses, including MPXV (Twist Bioscience, 2021). The enriched libraries were loaded onto an Illumina iSeq100®, Miseq® or Nextseq2000® for 2 x 151 cycles as described previously (Kinganda-Lusamaki et al., 2021). The resulting FASTQ files were analyzed using CZid (<https://czid.org>) and GeVarLi (<https://forge.ird.fr/transvihmi/GeVarLi>) for quality control and data cleaning of sequencing reads. Variant calling and genome coverage statistics were then performed, and a consensus genome sequence was generated using the Clade I reference genome (Accession number: NC\_003310.1). Clade assignment was done using Nextclade – Mpox (all clades, <https://clades.nextstrain.org/>).

### ***Phylogenetic analysis of near-complete MPXV genomes.***

The new MPXV near-complete genomes from this study were aligned with high-quality and complete MPXV genomes (publicly available and retrieved from NCBI GenBank). These sequences were selected to cover the known Clade I diversity (n=98) from DRC and other Central African countries and isolated from humans and animals. Clade II sequences (n=43) were used as outgroup (**Supplementary Table S1**). Multiple sequence alignment was performed using SQUIRREL (<https://github.com/aineniamh/squirrel>), which uses Minimap2 to map the genomes against the Clade I reference (Accession number NC\_003310), aligns them and masks problematic regions (Li H. 2018). The best scalable model, based on aligned data, was obtained using Modelfinder (Kalyaanamoorthy et al., 2017) implemented in IQ-TREE. The phylogeny was inferred by Maximum Likelihood (ML) using IQ-TREE multicore version 2.2.6 (Minh et al., 2020). Branch support was estimated by ultrafast bootstrap with 1000 replicates (Hoang et al., 2018). Trees were formatted and annotated with FigTree, Microreact and iTOL v.5 (Letunic and Bork, 2021).

### ***APOBEC3 analysis of the new MPXV sequences***

The new MPXV sequences (with >70% genome coverage) were aligned to the Clade I reference genome NC\_003310 using Minimap2 v2.17, after exclusion of the 3' terminal repeat region of the MPXV genome by trimming sequences starting from position 190788 to the end. Additionally, several identified repetitive or low-complexity regions specific to Clade I were masked from the alignment. The complete alignment, extraction and masking pipeline can be accessed at <http://github.com/aineniamh/squirrel>. Subsequently, Clade II MPXV genomes dated 1978, 1970 and 1971, were used as outgroups (Accession numbers KJ642615, KJ642616 and KJ642617, respectively) in IQ-TREE 2 with the HKY substitution model (Kalyaanamoorthy et al., 2017) to allow estimation of a maximum likelihood tree. Ancestral reconstruction was performed for each internal node of the phylogeny using IQ-TREE 2, allowing mapping of single nucleotide polymorphisms (SNPs) along branches. SNPs were categorized based on their consistency with APOBEC3-editing, assuming that this process induces specific mutations (TC->TT and GA->AA) (O'Toole et al., 2023).

## **RESULTS**

### ***Characteristics of patients and samples***

A total of 603 samples, collected from 581 patients, were sequenced. The samples were collected between 2018 and march 2024 as follows; 2018 (n=13), 2020 (n=3), 2021 (n=6), 2022 (n=138; 125 patients), 2023 (n=390; 382 patients) and 2024 (n=53; 52 patients). For a subset of 22 patients, more than one sample type was analysed. Samples originated from 17 of the 26 provinces and 102 of the 519 health zones in DRC (**Figure 1**). The genome coverage was at least 70% for 423/603 (70.1%) samples. High quality genomes (>90% coverage with a

minimum depth of 10x) were recovered for 348 (57.7%) samples, representing 337 patients from 14 provinces and 67 health zones. Demographic information including health zone and province locations are provided in **Table 1**. Among the 581 patients, 319 (54.9%) were male and 236 (40.6%) were female patients, no information was provided for the remaining 26 (3.7%). The overall median age was 14 years (IQR: 7-27).

Sample types used for sequencing included vesicle (n=267, 44.3%), crust (n=255, 42.3%), blood (n=64, 10.6%) and oropharyngeal swabs (n=17, 2.8%) with the highest genome coverage and sequencing depth obtained from vesicles and crusts. The sequence coverage and quality were highly correlated to viral load with best results (coverage >90%) for Ct-values <20 (69%; (243/352), 43% (96/221) for Ct-values between 20 and 30, and 11.7% (2/17) with Ct-values >30, independent of the nature of samples (**Supplementary Figure S1**).

### ***Phylogenetic analysis of MPXV strains: phylogeographic subclusters and spread in urban settings***

Analysis of the new MPXV sequences using Nextclade indicated that all sequences belong to Clade I. We estimated a maximum likelihood (ML) phylogeny with 348 newly obtained and high quality MPXV genomes (genome coverage >90%) in this study and reference sequences of the different clades and subclades. The 17 sequences obtained from MPXV-infected individuals in the South-Kivu province in 2024 corresponded to the newly described Clade Ib. In contrast, all genomes analysed from elsewhere in the country corresponded to Clade Ia (**Figure 2**). According to the previously described Clade Ia groups (Berthet et al., 2021; Nakazawa et al., 2015), none of the new sequences belonged to group I which includes only previously reported strains originating from Cameroon and Gabon as shown in **Figure 2a and 2b**. Group II is the most diverse and widespread across DRC and

contains 328 genomes (including 278 new genomes and 50 previously published) out of overall 447 genomes. Group II also includes previously reported sequences from neighbouring countries; i.e. Central African Republic (CAR) (n=10), Sudan (n=2) and Republic of Congo (n=1). The majority of the group II sequences in this study came from health zones located around the Congo River or its affluents such as Ubangi river (North East); Itimbiri, Aruwimi or Uele rivers (North Central); and Kasai rivers network (South West) (**Figure 2b**). As shown in **Figure 2a**, three main clusters were observed within group II, suggestive of different subgroups. Group III and IV only had MPXV genomes from the DRC (**Figure 2a**). Group III strains circulate in central DRC, mainly Sankuru and Tshopo provinces; group IV mainly circulates across Kwilu, Sankuru, and Maniema provinces, corresponding mainly to the southern savannah area of the country (**Figure 2b**). Group V includes only one previously described isolate from Sankuru District, DRC in 2006 (JX878417). We also identified a new group that circulates in Tshopo province (**Figure 2a and 2b**). The few previously reported Clade Ia genomes from wildlife fall in group I, for the strain obtained from a chimpanzee in Cameroon, and in groups II and III for squirrels (*Funisciurus sp*) and shrews (*Crocidura sp*) from DRC (**Figure 2a**). Interestingly, the six strains from Kinshasa fall into three different lineages from group II and cluster with strains from endemic provinces like Mai-Ndombe and Equateur (**supplementary Figure S2.**).

### ***Co-circulation of different MPXV sub-lineages***

In several areas there was co-circulation of different Clade Ia groups; in Sankuru province, groups II, IV, and V circulated and given the large geographic spread of group II, co-circulation of group II alongside groups III or IV is seen in other provinces. Importantly, co-circulation of diverse MPXV variants from the same and different groups has also been observed at a smaller scale as shown on the examples in **Figure 3**. In Bikoro Health Zone

(Equateur province), three different viral variants circulated between 22 April and 3 May 2023 (**Figure 3a**). Similar patterns were observed in Yakusu Health Zone (Tshopo province) where two viral strains circulated between 10 December 2022 and 2 January 2023 (**Figure 3b**) and Bolomba Health Zone (Equateur province) where two different viral strains circulated between 9 September and 1 October 2022 (**Figure 3c**). In the Inongo Health Zone (Maidombe province), three different outbreaks occurred in 2023, each with multiple co-circulating lineages (**Figure 3d**). In contrast, in the provinces of North and South Kivu, no such diversity was observed and all genomes analysed in this and other studies belonged to a single lineage of Clade Ib.

#### ***Limited APOBEC3 mutations observed among circulating strains***

To study the extent of human-to-human transmission, we analysed the different genomes from this study for APOBEC3-related mutations. Here, we included all 429 MPXV sequences with >70% genome coverage and the previously published Clade I sequences (**supplementary Table S1**). Overall, our dataset showed very little enrichment of APOBEC3-type mutations in Clade Ia sequences with an overall frequency of 10.7% (195/1827) and a ratio (APOBEC3/non-APOBEC3 mutations) of 11.9% (195/1632) versus an overall frequency of 35.9% (23/64) and a ratio of 56.1% (23/41) respectively for Clade Ib (**supplementary Figure S3 and Table 2**). The ratio of APOBEC3 to non-APOBEC3 mutations varied across the different Clade Ia groups and ranged between 3.0% to 13.2% (**Table 2**). In-depth analysis of the sequences showed slightly higher rates in some Clade Ia sequences; for example, in urban health zones of Kisangani (Tshopo province) and Kindu (Maniema province) and rural areas in Tshopo (Yakusu) and South-Ubangi (Bangabola) provinces (**supplementary Figure S3**).

## DISCUSSION

Overall, in this report we have characterized the diversity of MPXV in DRC and provide insight into the drivers underlying the increasing mpox cases. Indeed, this study generated a total of 348 near-complete (> 90% genome coverage) MPXV genomes from 337 individuals and 14 out of 26 provinces. The large majority (95%) of the new strains belong to clade Ia in which a high genetic diversity is observed. Most new Clade Ia strains fell in the previously described group II, followed by group III and IV, while we also identified new clusters representing potential new groups and sub-groups (Berthet et al., 2021; Nakazawa et al., 2015). In contrast, the new clade Ib strains, all from South Kivu province in 2024, cluster in the single lineage recently described in the South Kivu and North Kivu provinces (Masirika et al., 2024; Vakaniaki et al., 2024, INRB, 2024). Our study highlights the dual-drivers contributing to the source of human cases: the traditional paradigm of zoonotic spillover with interspecies transmission events and the more recently observed sustained human-to-human transmission driven by sexual contact with an enrichment of APOBEC3-type mutations. The low number of APOBEC3 mutations observed in Clade Ia suggests that most mpox cases have resulted from independent zoonotic introductions into the human population. We also showed that genetically diverse MPXV lineages can co-circulate in small geographic areas during the same outbreak, suggesting multiple zoonotic introductions over a short time span from one or multiple reservoir species. Nevertheless, observation of some clusters from endemic areas showed slightly increased numbers of APOBEC3 mutations in MPXV, suggesting a certain level of sustained human transmission, from potential transmission chains that were missed.

The increasing numbers of mpox cases reported from endemic provinces and the distribution of numerous cases around the Congo River and its affluents highlight the potential

link between viral spread and traffic proximal to these rivers and reflects possible widespread presence of the animal reservoir for these variants. This traffic could have potentiated MPXV introductions to new health zones and urban areas as illustrated by the introduction of multiple lineages in Kinshasa linked to MPXV strains from endemic areas in 2023. These events have to be closely monitored as they represent a major threat for additional regional and international dissemination in densely populated areas. This is of particular concern given the increased disease severity associated with clade I MPXV as compared to clade II (Americo et al., 2010; Hutson et al., 2010).

Overall, samples from which we obtained sequences represent a majority of the provinces within DRC that are endemic for mpox with the highest number of mpox cases continuously reported. However, the global picture of MPXV diversity remains incomplete as the 348 MPXV genomes only represent a minority of the suspected mpox cases and only symptomatic patients seeking health care. Nevertheless, our study provides important new information on the genetic diversity of MPXV circulating across different provinces in DRC. More large-scale studies, including serosurveys, are needed to estimate the extent of the mpox epidemic in humans and its subsequent genetic diversity in MPXV strains involved into the outbreaks. As previously reported, the samples collected and shipped for confirmatory tests were not always from the primary cases (Kinganda-Lusamaki et al 2022). Thus, more studies are needed for investigating primary cases and a better understanding of viral introduction into the human population.

The highest genome coverage and depth of consensus genomes were obtained from vesicle and crust swab samples. Opposed to skin lesion swabs, sequencing from blood samples is challenging due to lower viral load, as the viremia rapidly decreases after rash onset (Pittman et al., 2022). However, most remote health facilities are not sufficiently equipped to

safely collect skin lesion swab samples, and instead blood samples are collected and shipped to the reference laboratory for most cases. The national surveillance and training program should focus on providing appropriate materials to health facilities to allow safe and adequate sampling of skin lesions for improving the molecular diagnosis and characterization of MPXV strains. It is urgent to improve the access to mpox diagnostic tools, decentralize the testing, and to scale up MPXV genomic surveillance for all concerned clades. Nevertheless, the challenge is as big as the DRC is, with logistical requirements to access remote areas and deal with security issues in conflict zones.

Our study suggests that the current mpox cases in DRC are predominated by zoonotic transmission events. It is thus urgent to better document the nature and extent of animal reservoirs to understand whether the increasing number of cases results from increased direct contacts with putative natural reservoirs, an increase in prevalence of the infection in the animal reservoir, an increase in animal reservoir populations, or a combination of those. More information is also needed on the clinical presentation of mpox in endemic areas, because with the recent outbreak with Clade IIb in the world, it was documented that many cases can be pauci- or asymptomatic (Rosenthal, 2024). The clinical presentation of mpox can also differ according to transmission modes, as shown in South Kivu and North Kivu versus endemic regions in DRC (Vakaniaki, 2024). The role of mpox infection on long-term clinical sequelae, viral dynamics in reservoirs, and the persistence of humoral and/or cellular immunity over time still needs to be documented. The global 2022 mpox outbreak highlighted that MPXV is a pathogen of public health concern that includes both endemic and non-endemic regions worldwide. The ongoing outbreak in South Kivu which started in a mining city and further disseminated to larger urban areas in DRC such as Bukavu and Goma as well as to four countries in east Africa (Burundi, Kenya, Rwanda and Uganda) previously unaffected by mpox



<https://www.afro.who.int/news/african-region-faces-unprecedented-surge-mpox-cases>)

underscores on the critical need to improve preparedness and coordinate response efforts at the regional and international level. Recent identification of mpox cases in Kinshasa and presence of multiple lineages in a large urban center suggest potential regional and international spread with multiple clade I lineages. It is time to join efforts in the fight against recurrent mpox epidemics in DRC.

## **ACKNOWLEDGEMENTS**

All Provincial Health Division and Health zones, Francois Kasongo, Junior Bulabula, Paul Tshiminyi, Elisabeth Muyamuna, Frida Nkawa, Emmanuel Lokilo, Sifa Kavira, Ola Rilia, Chloé Muswamba, Francisca Muyembe, Emile Muhindo-Milonde, Adèle Kavira-Kamaliro, Zéphanie Paluku-Kalimuli, Jeriel Mubalama-Mufungizi, Tavia Bodisa-Matamu, Raphael Lumembe, Gabriel Kabamba, Michel Kenye, André Citenga, Fiston Cikaya, Meris Matondo, Emile Malembi, Cris Kacita, Thierry Kalonji, Mike R. Wiley, Elise De Vos, Eugene Bangwen, Isabel Brosius, Edyth Parker, CZID Biohub

## **FUNDING**

This study was supported by Africa CDC Pathogen Genomics Initiative (Africa PGI) (Grants: INV-018278; INV-033857; Saving Lives and Livelihoods program; NU2HGH000077); Agence Française de Développement through the AFROSCREEN project (grant agreement CZZ3209, coordinated by ANRS-MIE Maladies infectieuses émergentes in partnership with Institut de Recherche pour le Développement (IRD) and Pasteur Institute); PANAFPOX project funded by ANRS-MIE ; Belgian Directorate-general Development Cooperation and Humanitarian Aid and the Research Foundation – Flanders (FWO, grant number G096222 N to L.L.); Department of Defense, Defense Threat Reduction Agency, Monkeypox Threat Reduction Network; USDA

Non-Assistance Cooperative Agreement #20230048; International mpox Research Consortium (IMReC) through funding from the Canadian Institutes of Health Research and International Development Research Centre (grant no. MRR-184813); Wellcome Trust (Collaborators Award 206298/Z/17/Z, ARTIC network); E.L. received a PhD grant from the French Foreign Office.

## REFERENCES

- Americo, J.L., Moss, B., Earl, P.L., 2010. Identification of Wild-Derived Inbred Mouse Strains Highly Susceptible to Monkeypox Virus Infection for Use as Small Animal Models. *J. Virol.* 84, 8172–8180. <https://doi.org/10.1128/JVI.00621-10>
- Beer, E.M., Rao, V.B., 2019. A systematic review of the epidemiology of human monkeypox outbreaks and implications for outbreak strategy. *PLoS Negl. Trop. Dis.* 13, e0007791. <https://doi.org/10.1371/journal.pntd.0007791>
- Berthet, N., Descorps-Declère, S., Besombes, C., Curaudeau, M., Nkili Meyong, A.A., Selekon, B., Labouba, I., Gonofio, E.C., Ouilibona, R.S., Simo Tchegnna, H.D., Feher, M., Fontanet, A., Kazanji, M., Manuguerra, J.-C., Hassanin, A., Gessain, A., Nakoune, E., 2021. Genomic history of human monkey pox infections in the Central African Republic between 2001 and 2018. *Sci. Rep.* 11, 13085. <https://doi.org/10.1038/s41598-021-92315-8>
- Bunge, E.M., Hoet, B., Chen, L., Lienert, F., Weidenthaler, H., Baer, L.R., Steffen, R., 2022. The changing epidemiology of human monkeypox—A potential threat? A systematic review. *PLoS Negl. Trop. Dis.* 16, e0010141. <https://doi.org/10.1371/journal.pntd.0010141>
- Cabanillas, B., Murdaca, G., Guemari, A., Torres, M.J., Azkur, A.K., Aksoy, E., Vitte, J., de las Vecillas, L., Giovannini, M., Fernández-Santamaria, R., Castagnoli, R., Orsi, A., Amato, R., Giberti, I., Català, A., Ambrozej, D., Schaub, B., Tramper-Stranders, G.A., Novak, N., Nadeau, K.C., Agache, I., Akdis, M., Akdis, C.A., 2023. A compilation answering 50 questions on Monkeypox virus and the current Monkeypox outbreak. *Allergy* all.15633. <https://doi.org/10.1111/all.15633>
- CDC, N. (DHCPP), 2022. 2022 Monkeypox and Orthopoxvirus Outbreak Global Map [WWW Document]. URL <https://www.cdc.gov/poxvirus/monkeypox/response/2022/world-map.html> (accessed 6.12.22).

- Djuicy DD, Sadeuh-Mba SA, Bilounga CN, Yonga MG, Tchatchueng-Mbougua JB, Essima GD, Ezzo L, Nguidjol IME, Metomb SF, Chebo C, Agwe SM, Ankone PA, Ngonla FNN, Mossi HM, Etoundi AGM, Eyangoh SI, Kazanji M, Njouom R. Concurrent Clade I and Clade II Monkeypox Virus Circulation, Cameroon, 1979-2022. *Emerg Infect Dis.* 2024 Mar;30(3):432-443. doi: 10.3201/eid3003.230861. Epub 2024 Feb 7.
- Erez, N., Achdout, H., Milrot, E., Schwartz, Y., Wiener-Well, Y., Paran, N., Politi, B., Tamir, H., Israely, T., Weiss, S., Beth-Din, A., Shifman, O., Israeli, O., Yitzhaki, S., Shapira, S.C., Melamed, S., Schwartz, E., 2019. Diagnosis of Imported Monkeypox, Israel, 2018. *Emerg. Infect. Dis.* 25, 980–983. <https://doi.org/10.3201/eid2505.190076>
- Gessain A, Nakoune E, Yazdanpanah Y. Monkeypox. *N Engl J Med.* 2022 Nov 10;387(19):1783-1793. doi: 10.1056/NEJMra2208860. Epub 2022 Oct 26.
- Gong, Q., Wang, C., Chuai, X., Chiu, S., 2022. Monkeypox virus: a re-emergent threat to humans. *Viol. Sin.* 37, 477–482. <https://doi.org/10.1016/j.virs.2022.07.006>
- Hadfield, J., Megill, C., Bell, S.M., Huddleston, J., Potter, B., Callender, C., Sagulenko, P., Bedford, T., Neher, R.A., 2018. Nextstrain: real-time tracking of pathogen evolution. *Bioinformatics* 34, 4121–4123. <https://doi.org/10.1093/bioinformatics/bty407>
- Happi, C., Adetifa, I., Mbala, P., Njouom, R., Nakoune, E., Happi, A., Ndodo, N., Ayansola, O., Mboowa, G., Bedford, T., Neher, R.A., Roemer, C., Hodcroft, E., Tegally, H., O’Toole, Á., Rambaut, A., Pybus, O., Kraemer, M.U.G., Wilkinson, E., Isidro, J., Borges, V., Pinto, M., Gomes, J.P., Freitas, L., Resende, P.C., Lee, R.T.C., Maurer-Stroh, S., Baxter, C., Lessells, R., Ogbwell, A.E., Kebede, Y., Tessema, S.K., de Oliveira, T., 2022. Urgent need for a non-discriminatory and non-stigmatizing nomenclature for monkeypox virus. *PLOS Biol.* 20, e3001769. <https://doi.org/10.1371/journal.pbio.3001769>
- Hoang, D.T., Chernomor, O., Von Haeseler, A., Minh, B.Q., Vinh, L.S., 2018. UFBoot2: Improving the Ultrafast Bootstrap Approximation. *Mol. Biol. Evol.* 35, 518–522. <https://doi.org/10.1093/molbev/msx281>
- Hutson, C.L., Carroll, D.S., Self, J., Weiss, S., Hughes, C.M., Braden, Z., Olson, V.A., Smith, S.K., Karem, K.L., Regnery, R.L., Damon, I.K., 2010. Dosage comparison of Congo Basin and West African strains of monkeypox virus using a prairie dog animal model of systemic orthopoxvirus disease. *Virology* 402, 72–82. <https://doi.org/10.1016/j.virol.2010.03.012>

- INRB, 2024. First mpox virus Clade Ib cases in Goma, North Kivu, DRC: Potential risk for a larger outbreak [WWW Document]. Virological.org. URL <https://virological.org/t/mpox-clade-ib-cases-in-goma/962>
- Kalyaanamoorthy, S., Minh, B.Q., Wong, T.K.F., Von Haeseler, A., Jermiin, L.S., 2017. ModelFinder: fast model selection for accurate phylogenetic estimates. *Nat. Methods* 14, 587–589. <https://doi.org/10.1038/nmeth.4285>
- Kibungu, E., Vakaniaki, E., Kinganda-Lusamaki, E., Kalonji-Mukendi, T., Pukuta, E., Hoff, N., Bogoch, I., Cevik, M., Gonsalves, G., Hensley, L., Low, N., Shaw, S., Schillberg, E., Hunter, M., Lunyanga, L., Linsuke, S., Madinga, J., Peeters, M., Cigolo, J.-C.M., Ahuka-Mundeke, S., Muyembe, J.-J., Rimoin, A., Kindrachuk, J., Mbala-Kingebeni, P., Lushima, R., 2024. Clade I–Associated mpox Cases Associated with Sexual Contact, the Democratic Republic of the Congo. *Emerg. Infect. Dis. J.* 30. <https://doi.org/10.3201/eid3001.231164>
- Kinganda-Lusamaki E, Baketana LK, Ndomba-Mukanya E, Bouillin J, Thaurignac G, Aziza AA, Luakanda-Ndelemo G, Nuñez NF, Kalonji-Mukendi T, Pukuta ES, Nkuba-Ndaye A, Lofiko EL, Kibungu EM, Lushima RS, Ayouba A, Mbala-Kingebeni P, Muyembe-Tamfum JJ, Delaporte E, Peeters M, Ahuka-Mundeke S. Use of Mpox Multiplex Serology in the Identification of Cases and Outbreak Investigations in the Democratic Republic of the Congo (DRC). *Pathogens*. 2023 Jul 7;12(7):916. doi: 10.3390/pathogens12070916
- Kulesh, D.A., Baker, R.O., Loveless, B.M., Norwood, D., Zwiers, S.H., Mucker, E., Hartmann, C., Herrera, R., Miller, D., Christensen, D., Wasieloski, L.P., Huggins, J., Jahrling, P.B., 2004. Smallpox and *pan*-Orthopox Virus Detection by Real-Time 3'-Minor Groove Binder TaqMan Assays on the Roche LightCycler and the Cepheid Smart Cycler Platforms. *J. Clin. Microbiol.* 42, 601–609. <https://doi.org/10.1128/JCM.42.2.601-609.2004>
- Ladnyj, I.D., Ziegler, P., Kima, E., 1972. A human infection caused by monkeypox virus in Basankusu Territory, Democratic Republic of the Congo. *Bull. World Health Organ.* 46, 593–597.
- Letunic, I., Bork, P., 2021. Interactive Tree Of Life (iTOL) v5: an online tool for phylogenetic tree display and annotation. *Nucleic Acids Res.* 49, W293–W296. <https://doi.org/10.1093/nar/gkab301>
- Li H. 2018. Minimap2: pairwise alignment for nucleotide sequences. *Bioinformatics* 34:3094–3100

- Li, Y., Zhao, H., Wilkins, K., Hughes, C., Damon, I.K., 2010. Real-time PCR assays for the specific detection of monkeypox virus West African and Congo Basin strain DNA. *J. Virol. Methods* 169, 223–227. <https://doi.org/10.1016/j.jviromet.2010.07.012>
- Mauldin MR, McCollum AM, Nakazawa YJ, Mandra A, Whitehouse ER, Davidson W, Zhao H, Gao J, Li Y, Doty J, Yinka-Ogunleye A, Akinpelu A, Aruna O, Naidoo D, Lewandowski K, Afrough B, Graham V, Aarons E, Hewson R, Vipond R, Dunning J, Chand M, Brown C, Cohen-Gihon I, Erez N, Shifman O, Israeli O, Sharon M, Schwartz E, Beth-Din A, Zvi A, Mak TM, Ng YK, Cui L, Lin RTP, Olson VA, Brooks T, Paran N, Ihekweazu C, Reynolds MG. Exportation of Monkeypox Virus From the African Continent. *J Infect Dis.* 2022 Apr 19;225(8):1367-1376. doi: 10.1093/infdis/jiaa559.
- Masirika, L.M., Udahemuka, J.C., Schuele, L., Ndishimye, P., Otani, S., Mbiribindi, J.B., Marekani, J.M., Mambo, L.M., Bubala, N.M., Boter, M., Nieuwenhuijse, D.F., Lang, T., Kalalizi, E.B., Musabyimana, J.P., Aarestrup, F.M., Koopmans, M., Oude Munnink, B.B., Siangoli, F.B., 2024. Ongoing mpox outbreak in Kamituga, South Kivu province, associated with monkeypox virus of a novel Clade I sub-lineage, Democratic Republic of the Congo, 2024. *Eurosurveillance* 29. <https://doi.org/10.2807/1560-7917.ES.2024.29.11.2400106>
- McCollum, A.M., Shelus, V., Hill, A., Traore, T., Onoja, B., Nakazawa, Y., Doty, J.B., Yinka-Ogunleye, A., Petersen, B.W., Hutson, C.L., Lewis, R., 2023. Epidemiology of Human mpox — Worldwide, 2018–2021. *MMWR Morb. Mortal. Wkly. Rep.* 72, 68–72. <https://doi.org/10.15585/mmwr.mm7203a4>
- Minh, B.Q., Hahn, M.W., Lanfear, R., 2020. New Methods to Calculate Concordance Factors for Phylogenomic Datasets. *Mol. Biol. Evol.* 37, 2727–2733. <https://doi.org/10.1093/molbev/msaa106>
- Nakazawa, Y., Mauldin, M., Emerson, G., Reynolds, M., Lash, R., Gao, J., Zhao, H., Li, Y., Muyembe, J.-J., Kingebeni, P., Wemakoy, O., Malekani, J., Karem, K., Damon, I., Carroll, D., 2015. A Phylogeographic Investigation of African Monkeypox. *Viruses* 7, 2168–2184. <https://doi.org/10.3390/v7042168>
- Ng, O.T., Lee, V., Marimuthu, K., Vasoo, S., Chan, G., Lin, R.T.P., Leo, Y.S., 2019. A case of imported Monkeypox in Singapore. *Lancet Infect. Dis.* 19, 1166. [https://doi.org/10.1016/S1473-3099\(19\)30537-7](https://doi.org/10.1016/S1473-3099(19)30537-7)
- O’Toole, Á., Neher, R.A., Ndodo, N., Borges, V., Gannon, B., Gomes, J.P., Groves, N., King, D.J., Maloney, D., Lemey, P., Lewandowski, K., Loman, N., Myers, R., Omah, I.F., Suchard,

- M.A., Worobey, M., Chand, M., Ihekweazu, C., Ulaeto, D., Adetifa, I., Rambaut, A., 2023. APOBEC3 deaminase editing in mpox virus as evidence for sustained human transmission since at least 2016. *Science* 382, 595–600. <https://doi.org/10.1126/science.adg8116>
- Oude Munnink, B.B., Masirika, L.M., Bengenya Mbiribindi, J., Belesi Siangoli, F., Ndishimye, P., Udahemuka, J.C., Musabyimana, J.P., M. Aarestrup, F., Nieuwenhuijse, D.F., Schuele, L., Boter, M., Koopmans, M., 2024. Preliminary analysis of full genome sequences of 58 MPXV clade Ib cases from Kamituga and Kamanyola, South-Kivu , DRC [WWW Document]. *Virological.org*. URL <https://virological.org/t/preliminary-analysis-of-full-genome-sequences-of-58-mpxv-clade-ib-cases-from-kamituga-and-kamanyola-south-kivu-drc/975> (accessed 8.10.24).
- Pittman, P.R., Martin, J.W., Kingebeni, P.M., Tamfum, J.-J.M., Wan, Q., Reynolds, M.G., Quinn, X., Norris, S., Townsend, M.B., Satheshkumar, P.S., Soltis, B., Honko, A., Güereña, F.B., Korman, L., Huggins, J.W., 2022. Clinical characterization of human monkeypox infections in the Democratic Republic of the Congo (preprint). *Infectious Diseases (except HIV/AIDS)*. <https://doi.org/10.1101/2022.05.26.22273379>
- Reed KD, Melski JW, Graham MB, Regnery RL, Sotir MJ, Wegner MV, Kazmierczak JJ, Stratman EJ, Li Y, Fairley JA, Swain GR, Olson VA, Sargent EK, Kehl SC, Frace MA, Kline R, Foldy SL, Davis JP, Damon IK. The detection of monkeypox in humans in the Western Hemisphere. *N Engl J Med*. 2004 Jan 22;350(4):342-50. doi: 10.1056/NEJMoa032299.
- Rimoin, A.W., Mulembakani, P.M., Johnston, S.C., Lloyd Smith, J.O., Kusalu, N.K., Kinkela, T.L., Blumberg, S., Thomassen, H.A., Pike, B.L., Fair, J.N., Wolfe, N.D., Shongo, R.L., Graham, B.S., Formenty, P., Okitolonda, E., Hensley, L.E., Meyer, H., Wright, L.L., Muyembe, J.-J., 2010. Major increase in human monkeypox incidence 30 years after smallpox vaccination campaigns cease in the Democratic Republic of Congo. *Proc. Natl. Acad. Sci.* 107, 16262–16267. <https://doi.org/10.1073/pnas.1005769107>
- Rosenthal, M., 2024. Possible asymptomatic mpox points to need for increased testing and vaccination [WWW Document]. *Infect. Dis. Spec. Ed.* URL <https://www.idse.net/HIV-AIDS-STIs/Article/05-24/Asymptomatic-Mpox-Points-to-Need-for-Increased-Testing-and-Vaccination/73750> (accessed 8.12.24)
- Sagulenko, P., Puller, V., Neher, R.A., 2018. TreeTime: Maximum-likelihood phylodynamic analysis. *Virus Evol.* 4. <https://doi.org/10.1093/ve/vex042>

- SGL-mpox, 2024. Epidémie de mpox en République Démocratique du Congo (Rapport hebdomadaire de la semaine épidémiologique 27, 2024 No. 24). Ministère de la Santé, Système de Gestion de l'Incident, RDC.
- Sharif, Nadim, Sharif, Nazmul, Alzahrani, K.J., Halawani, I.F., Alzahrani, F.M., Díez, I.D.L.T., Lipari, V., Flores, M.A.L., Parvez, A.K., Dey, S.K., 2023. Molecular epidemiology, transmission and clinical features of 2022-mpox outbreak: A systematic review. *Health Sci. Rep.* 6, e1603. <https://doi.org/10.1002/hsr2.1603>
- Sklenovská, N., 2020. Monkeypox Virus, in: Malik, Y.S., Singh, R.K., Dhama, K. (Eds.), *Animal-Origin Viral Zoonoses, Livestock Diseases and Management*. Springer Singapore, Singapore, pp. 39–68. [https://doi.org/10.1007/978-981-15-2651-0\\_2](https://doi.org/10.1007/978-981-15-2651-0_2)
- Sklenovská, N., Van Ranst, M., 2018. Emergence of Monkeypox as the Most Important Orthopoxvirus Infection in Humans. *Front. Public Health* 6, 241. <https://doi.org/10.3389/fpubh.2018.00241>
- Vakaniaki, E.H., Kacita, C., Kinganda-Lusamaki, E., O'Toole, Á., Wawina-Bokalanga, T., Mukadi-Bamuleka, D., Amuri-Aziza, A., Malyamungu-Bubala, N., Mweshi-Kumbana, F., Mutimbwa-Mambo, L., Belesi-Siangoli, F., Mujula, Y., Parker, E., Muswamba-Kayembe, P.-C., Nundu, S.S., Lushima, R.S., Makangara-Cigolo, J.-C., Mulopo-Mukanya, N., Pukuta-Simbu, E., Akil-Bandali, P., Kavunga, H., Abdramane, O., Brosius, I., Bangwen, E., Vercauteren, K., Sam-Agudu, N.A., Mills, E.J., Tshiani-Mbaya, O., Hoff, N.A., Rimoin, A.W., Hensley, L.E., Kindrachuk, J., Baxter, C., De Oliveira, T., Ayouba, A., Peeters, M., Delaporte, E., Ahuka-Mundeke, S., Mohr, E.L., Sullivan, N.J., Muyembe-Tamfum, J.-J., Nachega, J.B., Rambaut, A., Liesenborghs, L., Mbala-Kingebeni, P., 2024. Sustained Human Outbreak of a New MPXV Clade I Lineage in the Eastern Democratic Republic of the Congo. *Nat. Med.* <https://doi.org/10.1038/s41591-024-03130-3>
- Vaughan, A., Aarons, E., Astbury, J., Balasegaram, S., Beadsworth, M., Beck, C.R., Chand, M., O'Connor, C., Dunning, J., Ghebrehewet, S., Harper, N., Howlett-Shiple, R., Ihekweazu, C., Jacobs, M., Kaindama, L., Katwa, P., Khoo, S., Lamb, L., Mawdsley, S., Morgan, D., Palmer, R., Phin, N., Russell, K., Said, B., Simpson, A., Vivancos, R., Wade, M., Walsh, A., Wilburn, J., 2018. Two cases of monkeypox imported to the United Kingdom, September 2018. *Eurosurveillance* 23. <https://doi.org/10.2807/1560-7917.ES.2018.23.38.1800509>

- Wertheim, J., Vasylyeva, T., Pekar, J., Havens, J., 2024. mpox virus resurgence in New York City, 2024 [WWW Document]. Virological.org. URL <https://virological.org/t/mpox-virus-resurgence-in-new-york-city-2024/973>
- WHO, 2024a. Multi-country outbreak of mpox, External Situation Report 34 [WWW Document]. URL [https://cdn.who.int/media/docs/default-source/health-emergency-information-risk-assessment/20240628\\_mpox\\_external-sitrep\\_34.pdf?sfvrsn=7a4abfce\\_1&download=true](https://cdn.who.int/media/docs/default-source/health-emergency-information-risk-assessment/20240628_mpox_external-sitrep_34.pdf?sfvrsn=7a4abfce_1&download=true) (accessed 7.5.24).
- WHO, 2024b. mpox - Democratic Republic of the Congo [WWW Document]. Dis. Outbreak News. URL <https://www.who.int/emergencies/disease-outbreak-news/item/2024-DON522> (accessed 7.29.24).
- WHO, 2024c. WHO Director-General's opening remarks at the media briefing [WWW Document]. URL <https://www.who.int/director-general/speeches/detail/who-director-general-s-opening-remarks-at-the-media-briefing---7-august-2024> (accessed 8.11.24)
- WHO, 2023a. 2022-23 mpox (Monkeypox) Outbreak: Global Trends [WWW Document]. URL [https://worldhealthorg.shinyapps.io/mpx\\_global/#5\\_Genomic\\_epidemiology](https://worldhealthorg.shinyapps.io/mpx_global/#5_Genomic_epidemiology)
- WHO, 2023b. Diagnostic testing for the monkeypox virus (MPXV): interim guidance [WWW Document]. URL <https://iris.who.int/bitstream/handle/10665/373966/WHO-MPX-Laboratory-2023.1.eng.pdf?sequence=1>
- WHO, 2023c. mpox (monkeypox)- Democratic Republic of the Congo [WWW Document]. URL <https://www.who.int/emergencies/disease-outbreak-news/item/2023-DON493>
- WHO, 2022a. Laboratory testing for the monkeypox virus: interim guidance, 23 May 2022 (Technical documents). World Health Organization.
- WHO, 2022b. Monkeypox: experts give virus variants new names [WWW Document]. URL <https://www.who.int/news/item/12-08-2022-monkeypox--experts-give-virus-variants-new-names>
- WHO, Geneva, 2022. 2022 mpox Outbreak: Global Trends. [WWW Document]. URL [https://worldhealthorg.shinyapps.io/mpx\\_global/](https://worldhealthorg.shinyapps.io/mpx_global/)



**Table 1 : Demographic characteristics of mpox patients with viruses sequenced**

Province	Number studied HZ <sup>1</sup> / total per province	Number Sampled patients	sex ratio (H/F);missing	median age years (IQR <sup>3</sup> )	Number and names of HZ <sup>1</sup> with genome coverage >90%	Collection period (months)	Number of samples genome coverage >90%	Number of published genomes
Bas-Uele	3/11	8	1.7 (5/3)	29 (12.5-34.5)	2 (Buta, Titule)	2.5	5	-
Equateur	11/18	91	1.1 (43/39) ; 9	11 (5-23)	11*	24.8	60	3
Haut-Uele	2/13	10	1.5 (6/4)	25 (10-41)	2 (Isiro, Pawa)	21.8	6	-
Kasai	4/18	7	0.8 (3/4)	18 (9-31)	2 (Kamuesha, Ndjoko-punda)	0.6	3	-
Kasai-Central	1/26	1	na <sup>2</sup> (1/0)	17	-	-	-	-
Kinshasa	8/34	12	2 (8/4)	20 (11-23)	5 (Gombe, Lemba, Limete, Matete, N'sele)	2.3	6	1
Kwango	4/14	13	1.6 (8/5)	30 (24-40)	2 (Kasongo-Lunda, Kenge)	14	6	-
Kwilu	7/24	8	3 (6/2)	9 (8-20)	4 (Bagata, Kikongo, Masima-nimba, Vanga)	16.5	5	1
Lomami	1/16	1	na (0/1)	36	-	-	-	-
Mai-Ndombe	7/14	58	1 (28/29); 1	14 (7-30)	5 (Banjow-Moke, Bosobe, Inongo, Kiri, Mushie)	9.2	30	-
Maniema	4/18	15	0.9 (7/8)	9 (7-21)	3 (Kindu, Obokote, Tunda)	8.3	13	-
Mongala	5/12	16	3.7 (11/3); 2	10 (4-13)	3 (Bongandaganda, Bosomanzi, Bosondjo)	11	10	2
Nord-Ubangi	2/11	3	0.5 (1/2)	18 (5-35)	-	-	-	-
Sankuru	5/16	26	1.4 (15/11)	15 (4-24)	5 (Bena-Dibele, Lodja, Lomela, Ototo, Vanga-kete)	67.3	19	25
Sud-Kivu	3/34	31	2 (18/9); 4	27 (21-32)	2 (Kadutu, Kamituga <sup>4</sup> )	3	17	22
Sud-Ubangi	15/16	57	1.8 (34/19); 4	11 (4.5-27)	8**	14	33	12
Tshopo	19/23	224	1.3 (125/93); 6	13 (7-25)	13***	73	136	13
Tshuapa	0/12							1
<b>Total</b>	<b>101/330<sup>#</sup></b>	<b>581</b>	<b>1.4 (319/236); 26</b>	<b>14 (7-27)</b>		<b>72.5</b>	<b>348</b>	<b>80</b>

<sup>1</sup> HZ: Health zone

<sup>2</sup> na: non applicable

<sup>3</sup> IQR : interquartile range

# Total number of health zones in DRC

\* Equateur HZ : Basankusu, Bikoro, Bolomba, Djombo, Ingende, Lilanga-Bobangi, Lotumbe, Lukolela, Mbandaka, Ntondo and Wangata ;

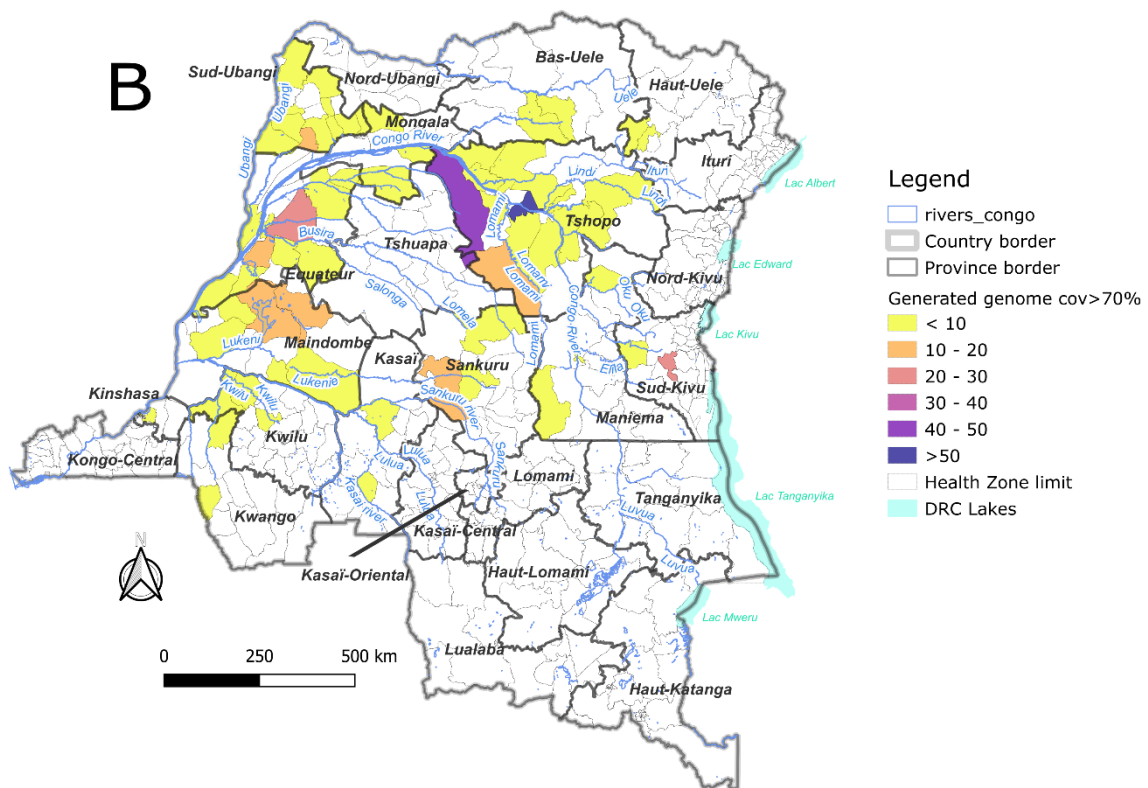
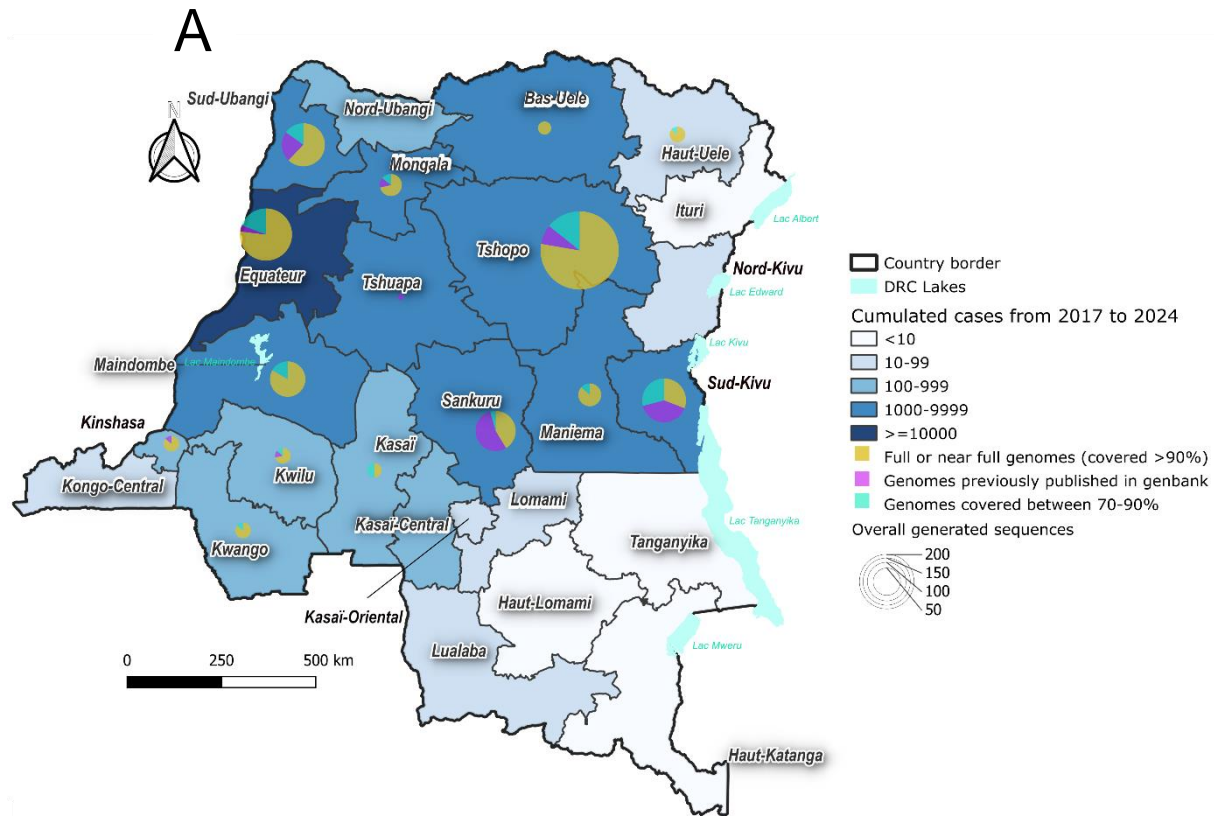
\*\* Sud-Ubangi HZ : Bangabola, Bogose-Nubea, Bokonzi, Boto, Budjala, Bulu, Libenge and Mbaya;

\*\*\* Tshopo HZ : Bafwasende, Basali, Basoko, Bengamisa, Kabondo, Kisangani, Opala, Wanie-Rukula, Yabaondo, Yahuma, Yakusu, Yaleko and Yalimbongo ;

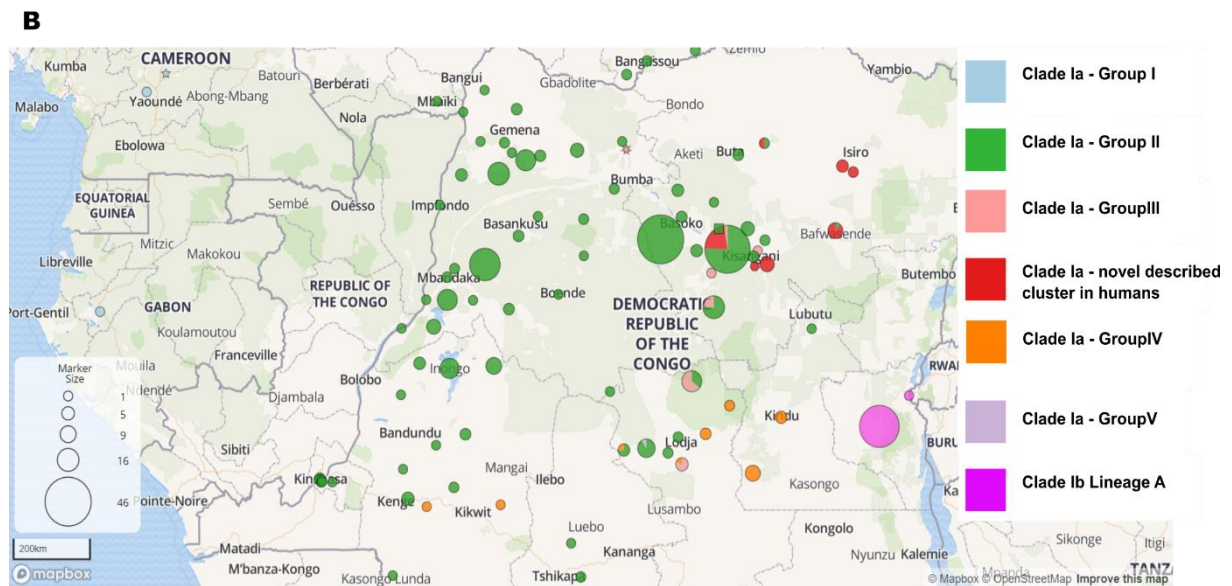
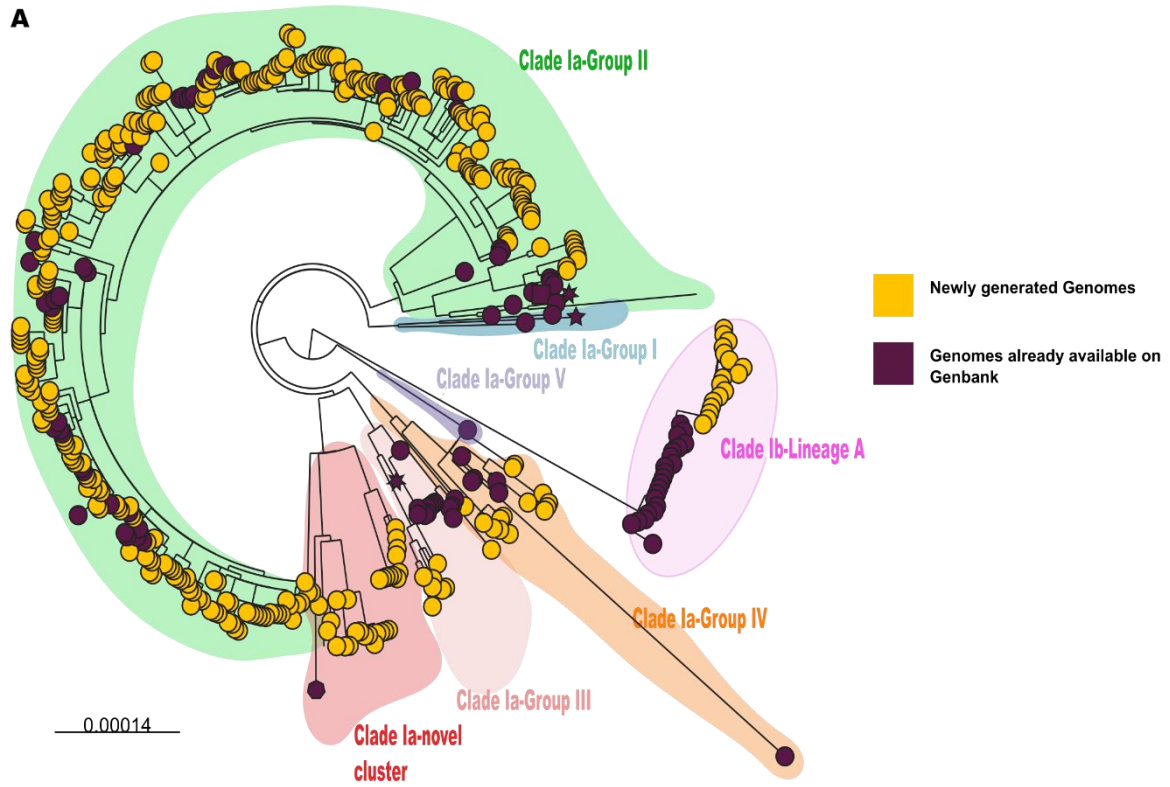
**Table 2** : Number of APOBEC3 and other mutations in monkeypox virus (MPXV) subclades Ia and Ib and in the different groups of subclade Ia.

Clade - group	APOBEC3	Other	Total	Ratio APOBEC3/other	Frequency of APOBEC3
<b>Clade Ia</b>	<b>195</b>	<b>1632</b>	<b>1827</b>	<b>0.119</b>	<b>10.7%</b>
Clade Ia- Group I	5	95	100	0.053	5.0%
Clade Ia- Group II	147	1112	1259	0.132	11.7%
Clade Ia- Group III	11	145	156	0.076	7.1%
Clade Ia- novel	28	221	249	0.127	11.2%
Clade Ia- Group IV	1	12	13	0.083	7.7%
Clade Ia- Group V	1	33	34	0.030	2.9%
<b>Overall Clade Ib</b>	<b>29</b>	<b>111</b>	<b>140</b>	<b>0.261</b>	<b>20.7%</b>
Clade Ib internal branches	23	41	64	0.561	35.9%

**Figure 1 :** **(1A)** Map with number of monkeypox virus (MPXV) samples sequenced per province between 2018 and march 2024 represented by size of circles and different colors according to genome coverage (>90%, purple; between 70-90%, brown), strains available in genbank from the same provinces are shown in turquoise and number of genomes generated with per province represented by blue circle including genomes previously published, and those from our study. The background map illustrates the number of cumulative suspected mpox cases reported between 2018 and march 2024 in gradients of blue; **(1B)** Map representing the number of monkeypox virus (MPXV) genomes with more than 70% of genome coverage in the different health zones (HZ) per province in a color gradient of range of samples sequenced.



**Figure 2 :** (A) Phylogenetic tree analysis of the newly obtained monkeypox virus (MPXV) strains (yellow shapes) and reference strains available in genbank (very dark pink shapes) as described in Methods. Circles represent human while other shapes represent non-human samples. The different clades and groups within clade Ia are highlighted in different colors; clade Ib, pink; clade Ia group I, blue; clade Ia group II, green; clade Ia group III, light orange; clade Ia group IV, dark orange; clade Ia group V, light purple and a potential new group in red; (B) circles on the map illustrate the geographical location of the different subclades and clade Ia groups in the same colors as in the phylogenetic tree and the numbers are reflected by the size of the circles.



**Figure 3** : Phylogenetic trees showing examples of health zones where multiple monkeypox virus (MPXV) cocirculate in a same time period, suggesting multiple introductions of viral strains; **(3A)** three variants cocirculate in Bikoro health zone in the Equateur Province between April and May 2023; **(3B)** two variants cocirculate in December 2022 in Yakusu health zone in Tshopo province; **(3C)** two variants cocirculate between September and October 2022 in Bolomba health zone in the Equateur province; **(3D)** three events with cocirculation of multiple variants have been observed in Inongo Health in the Mai-Ndombe Province as illustrated by different colors according to the time period.



