

Virtual dynamic contrast enhanced breast MRI using 2D U-Net Architectures.

Hannes Schreiter¹ [0000-0002-4373-6996] and Jessica Eberle¹, Lorenz A. Kapsner^{1,2},
Dominique Hadler¹, Sabine Ohlmeyer¹, Ramona Erber³, Julius Emons⁴, Frederik B. Laun¹, Michael
Uder¹, Evelyn Wenkel^{1,5}, Sebastian Bickelhaupt¹, Andrzej Liebert¹ [0000-0002-8450-3021]

¹ Institute of Radiology, University Hospital Erlangen, Friedrich-Alexander University Erlangen-Nürnberg,
Erlangen, Germany.

² Medical Center for Information and Communication Technology, University Hospital Erlangen, Friedrich-
Alexander University Erlangen-Nürnberg, Erlangen, Germany.

³ Institute of Pathology, University Hospital Erlangen, Friedrich-Alexander University Erlangen-Nürnberg,
Erlangen, Germany.

⁴ Department of Gynecology and Obstetrics, University Hospital Erlangen, Erlangen, Germany.

⁵ Radiologie München GbR, München, Germany.

hannes.schreiter@uk-erlangen.de

Abstract. Breast Magnetic Resonance Imaging (MRI) examinations routinely include contrast-agent based dynamic contrast-enhanced (DCE) acquisitions. Expanding the accessibility and personalization of breast MRI might be supported amongst others by advancing non-contrast-enhanced MRI, such as virtual dynamic contrast-enhanced techniques (vDCE) utilizing neural networks. This IRB-approved retrospective study includes n=540 breast MRI examinations acquired on a single 3T MRI scanner. Two 2D U-Net architectures were trained using non-contrast-enhanced MRI acquisitions including T1w, T2w and multi-b-value diffusion weighted imaging acquisitions as inputs and either a single (SCO-Net) or multiple (MCO-Net) time points of a DCE series as ground truth. The neural networks predicted a vDCE series corresponding to five consecutive DCE time points. Across all time points, no significant differences in structural similarity index (SSIM) could be found between the SCO-Net and MCO-Net, both achieving a mean SSIM of 0.86. For peak-signal-to-noise-ratio and normalized root-mean-square error, significantly better results could be observed for the MCO-Net reaching scores of 24.42dB and 0.087 respectively. Comparison of manual segmentations of findings on DCE and vDCE images reached a DICE score of 0.61 and an intersection over union (IoU) of 0.47 without significant differences between SCO-Net and MCO-Net. These findings suggest a technical feasibility of generating vDCE image series from unenhanced input acquisitions using neural networks. However, the analysis does not allow drawing any conclusion on the clinical assessment of lesion specific curve kinetics, which need to be assessed prior determining on the feasibility of deriving diagnostically meaningful enhancement characteristics in individual lesions.

Keywords: Contrast-enhanced MRI, Breast MRI, Deep Learning.

1 Introduction

Dynamic contrast-enhanced (DCE) Magnetic Resonance Imaging (MRI), a core element of multiparametric breast MRI examinations, acquires several T1-weighted (T1w) images before and after gadolinium-based contrast agent (GBCA) administration. This acquisition commonly employs intervals of 60-90 seconds in between the acquisitions, enabling assessment of enhancement characteristics in tissue and suspicious lesions [1]. Despite its diagnostic accuracy, DCE MRI has certain drawbacks when considered for specific diagnostic applications, especially in the context of breast cancer screening in healthy persons: GBCA administration is associated to direct and indirect costs [2], multi-time point DCE breast examinations commonly occupy significant scanner time [3,4] and despite a contextual comparatively high safety profile, GBCA administration have been reported to be associated with certain side effects like allergic reactions and the "symptoms associated to gadolinium exposure" (SAGE) complex [5]. Additionally, the use of GBCAs contributes to environmental gadolinium pollution with GBCA contamination affecting surface waters [6-8].

Due to these factors, there's a growing interest in breast MRI approaches reducing GBCA administration in the screening context, yet providing visual characteristics of contrast-enhanced acquisitions by generating artificial contrast-enhanced images from non-enhanced acquisitions. Such methods were previously shown in breast studies [9-12], albeit deriving only one of the multiple time points considered in DCE breast MRI.

However, technically such methods might allow as well for generating images reflecting different time points of dynamic acquisitions by training distinct networks for each time points acquired over several minutes. This assumption is supported by several studies using different post-contrast acquisition intervals as training data. For example, in Chung et al. 90-second intervals [9], in Müller-Franzes et al. 60-second intervals [11], and in Kim et al. both 60 and 90 seconds [10] were used. These variations thus fuel and support the hypothesis of a principal possibility to predict post-contrast images across a series of time points in an individual patient. Furthermore, Zhang et al. [13] showed that besides synthesizing multiple different MRI sequences a feasibility to synthesize DCE in breast MRI is given. However, resulting in unsatisfying outputs as stated by the authors [13].

Our study therefore investigates neural networks' ability to predict contrast enhancement for creating virtual dynamic contrast-enhanced (vDCE) breast MRI at various time points. It assesses two methods: using five separate networks for each time point (single-channel output - SCO-Net) and another using a single network with five time points as output channels (multi-channel output - MCO-Net), with the latter potentially benefiting by learning the dependencies of cross-time point latency information within a single training step. Both approaches were quantitatively assessed across the

1 entire breast and in segmentations of findings, including delineation comparisons between second
2 time point DCE and vDCE images, akin to Chung et al.'s work [9].

3 **2 Materials and Methods**

4 **2.1 Dataset**

5 This IRB approved retrospective study includes n=540 clinically indicated breast MRI examinations of
6 female patients (mean age: 52±12 years) acquired between 2017 and June 2020 at University Hospital
7 Erlangen, Germany. Acquisitions were conducted on a single 3 Tesla MRI scanner (MAGNETOM Skyra
8 Fit, Siemens Healthineers, Erlangen, Germany) with a dedicated 18-Channel breast coil (Siemens
9 Healthineers, Erlangen, Germany). The dataset was randomly split on patient level into training,
10 validation and an independent test set with n=377, n=81, and n=82 examinations, respectively.

11 Each examination included pre-contrast T1w, T2-weighted (T2w), multi-b-value (b-values: 0, 750
12 and 1500 s/mm²) diffusion weighted imaging (DWI) and T1w subtraction series after administration of
13 GBCA (T1w-sub) at five consecutive time points. The acquisition of T1w-sub began 20 seconds after
14 GBCA injection with each scan lasting 60 seconds. Detailed acquisition parameters are provided in
15 Table 1.

16 **Table 1.** MRI Sequence Parameter. Repetition time (TR), echo time (TE), inversion recovery time (IR), field of view
17 (FoV).

Parameter	T1w	T2w	DWI
TR [ms]	5.97	3570-5020	6290-9660
TE [ms]	2.46	60-70	66-70
IR [ms]	-	230	220-250
FoV [mm x mm]	360x360-430x430	340x340-430x430	350x220-430x270
Slice thickness [mm]	1.5-1.8	4	4
No. Averages	1	2	3 – b-value 50 8 – b-value 750 20 – b-value 1500

18

19 **2.2 Data Preprocessing and Binary Masking**

20 The DICOM files were transformed to NIfTI format using dcm2niix tool [14], followed by
21 preprocessing using in-house Python (version 3.9.10) scripts utilizing SimpleITK framework (version
22 2.2.1) including resampling, intensity normalization, intensity clamping and rescaling.

23 All images' field of view (FoV) was resampled to match the FoV of DWI acquisitions as well as
24 common spatial dimensions with an in-plane matrix of 448x280 and n=96 slices. Z-score normalization

1 was applied individually on T1w, T2w and different DWI acquisitions. To maintain the intensity uptake
2 over time in T1w-sub normalization was applied to the entire series. Intensities were clamped at
3 boundaries of -1 and 15, to minimize outlier impact. Finally, T1w, T2w and the DWI acquisitions were
4 scaled to a [0, 1] domain, while T1w-sub volumes were scaled to a [-1,1] domain.

5 Binary breast volume masks were calculated from T1w data using an in-house developed algorithm
6 based on mean thresholding of multiple maximum intensity projections (MIP) in slice (z-) direction.
7 Each *slice* of T1w data was processed into individual MIPs of adjacent slices (n_{slices}) to account for
8 varying anatomical shapes, as defined in Equation (1). MIPs were then binarized using mean
9 thresholding followed by binary dilation with a 5-pixel diameter disk-shaped kernel and a binary closing
10 operation to ensure homogeneous masks. The resulting masks were stored in NifTI format with the
11 same spacing, direction and origin of the T1w data. This algorithm was also previously described in
12 Liebert et al. [15].

13

$$n_{slices}(slice) = \begin{cases} [0, 6] & \text{if } slice \leq 3 \\ [slice - 3, slice + 3] & \text{if } 3 < slice < 9 \\ [slice - 3, slice + 3] & \text{if } 87 < slice < 93 \\ [90, 96] & \text{if } slice \geq 93 \\ [slice - 8, slice + 8] & \text{otherwise} \end{cases} \quad (1)$$

14 **2.3 Neural Network Architecture and Training**

15 Two 2D U-net architectures, were implemented, both consisting of three encoder and three decoder
16 stages with a bottleneck layer in-between. Detailed information of the composition of each layer is
17 presented in Figure 1.

18 In SCO-Net, five individual networks were trained each predicting a single time point of the DCE
19 series. MCO-Net utilized a five-channel output representing the whole DCE time series. The networks
20 were trained using native T1w, T2w and the multi-b-value DWI series as inputs and T1w-sub series as
21 targets. Inspired by Chen et al.[16] the loss function was a combination of structural similarity index
22 metric (SSIM)[17] and L1-norm as shown in the Equation (2) below.

23

$$L(y_i, y_i') = (1 - SSIM(y_i, y_i')) + L1(y_i, y_i') \quad (2)$$

24 Training utilized all slices of the datasets with ADAM optimizer and a batch size of 30 random slices.
25 A dedicated workstation (Linux Ubuntu 20.04, AMD Ryzen Threadripper PRO 3945WX 3.4Ghz, 64GB
26 RAM) with one Nvidia Quadro RTX 6000 GPU-card with 24GB RAM was used. The networks were
27 trained for 35 epochs without early stopping. Experiments were implemented using PyTorch (version
28 1.13.1), PyTorch-Lightning (version 1.8.6) and MONAI (version 0.8.0) frameworks.

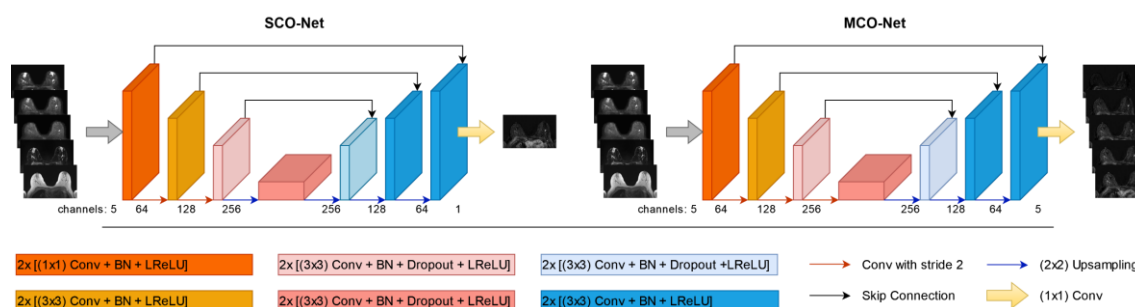


Fig. 1. Schematic overview of 2D-Unet Architectures. Left: Architecture for SCO-Net. Right: Architecture for MCO-Net. Both networks use 5 images as input channels. In SCO-Net, five individual networks were trained, each using a different time point of the DCE series as ground-truth. The MCO-Net uses each time point of the DCE series as a channel of the ground truth. Encoder stages consisted of two blocks of either a 1x1 or 3x3 convolution (Conv) layers followed by a batch normalization (BN) layer and a leaky rectified linear unit (LReLU) layer. Each decoder stage incorporates a concatenation with features of the encoder to represent the skip connections. The decoder stages on the 2nd and 1st level consisted of two 3x3 Conv layers followed by a BN layer and a LReLU layer. The deepest encoder and decoder stage and the bottleneck contain an additional dropout layer with a probability of 0.5. For encoder down-sampling, 2x2 Conv with a stride of 2 were used. Decoder up-sampling was performed using 2x2 transposed Conv with a stride of 2. After the final decoder stage, a 1x1 Conv was performed followed by a *tanh* operation in order to map the predictions to the expected output channels and [-1, 1] domain.

2.4 Performance Evaluation

The vDCE series were quantitatively evaluated on the holdout test set using the following metrics also used in previous literature: SSIM, peak signal-to-noise-ratio (PSNR), normalized root mean square error (NRMSE) and median symmetric accuracy (MEDSYMACE) which addresses robust analysis of symmetric prediction errors [10,12,18,19]. These metrics were calculated for both the whole image volume and separately for bounding boxes placed around segmented target findings as detailed below. Additionally, high frequency error norm (HFEN) was calculated only for whole images volume, as target finding sizes were too small in some cases for the calculation. Differences in mean values per time point and subject between the two network architecture approaches were evaluated using a two-way Repeated Measurements Anova, with the pingouin Python framework (version 0.5.3).

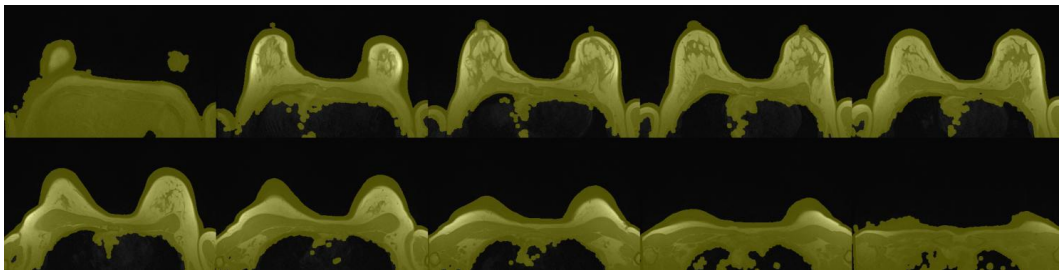
To assess the proposed techniques' effectiveness in depicting contrast uptake, segmentations were conducted on n=48 subjects of the test set with findings that stood out against background tissue in the DCE acquisitions including 8 BI-RADS \leq 2 cases (ranging from 5.0-31.4mm) and 40 BI-RADS $>$ 2 cases (ranging from 4.7-85.1mm). Per patient, the largest appearing finding was volumetrically segmented in DCE and both vDCE methods at the second time point using 3D Slicer Software (version:4.11) [20] carried out by a medical student (>2 years' experience) under a single radiologist's (>10 years' experience) guidance. Segmentations were compared using following metrics: DICE score, Intersection

1 over union (IoU), Hausdorff Distance (HD), and segmentation volume (segV). Additionally, the contrast-
2 to-noise ratio (CNR) was evaluated using a bounding box with a one-pixel offset around segmentations.
3 Statistical analysis was performed using a one-way Repeated Measures ANOVA with scipy (version
4 1.9.1) considering a p-value<0.05 as significant.

5 **3 Results**

6 **3.1 Binary Masking**

7 Figure 2 displays the results of breast volume masking on corresponding T1w slices for a representative
8 case. The masks successfully include the whole breast tissue while the air around the patient is
9 excluded as well as parts of the thorax, and most of the lung and heart tissue.



10
11 **Fig. 2.** Exemplary case of the breast volume masking for ten different slice positions is displayed. T1w slices and
12 the corresponding binary mask overlay (yellow) are shown. The mask correctly excludes air around the body and
13 large parts of the lungs. Whereas the breast tissue is fully included with an additional offset around the outer
14 breast contours to ensure no important information is counted as background

15 **3.2 Neural Network Performance**

16 Generated vDCE images were evaluated on similarity and error metrics for both SCO-Net and MCO-
17 Net on the holdout test set. Mean values across all five time points are presented in Table 2. SCO-Net
18 reached marginally higher values for SSIM and marginally lower values for PSNR and HMI in the image
19 volume and mean NRMSE and HFEN values were lower for MCO-Net and MEDSYMACH higher. In the
20 segmentations, MCO-Net showed higher similarity and lower error metrics compared to SCO-Net
21 except MEDSYMACH.

22

23

24

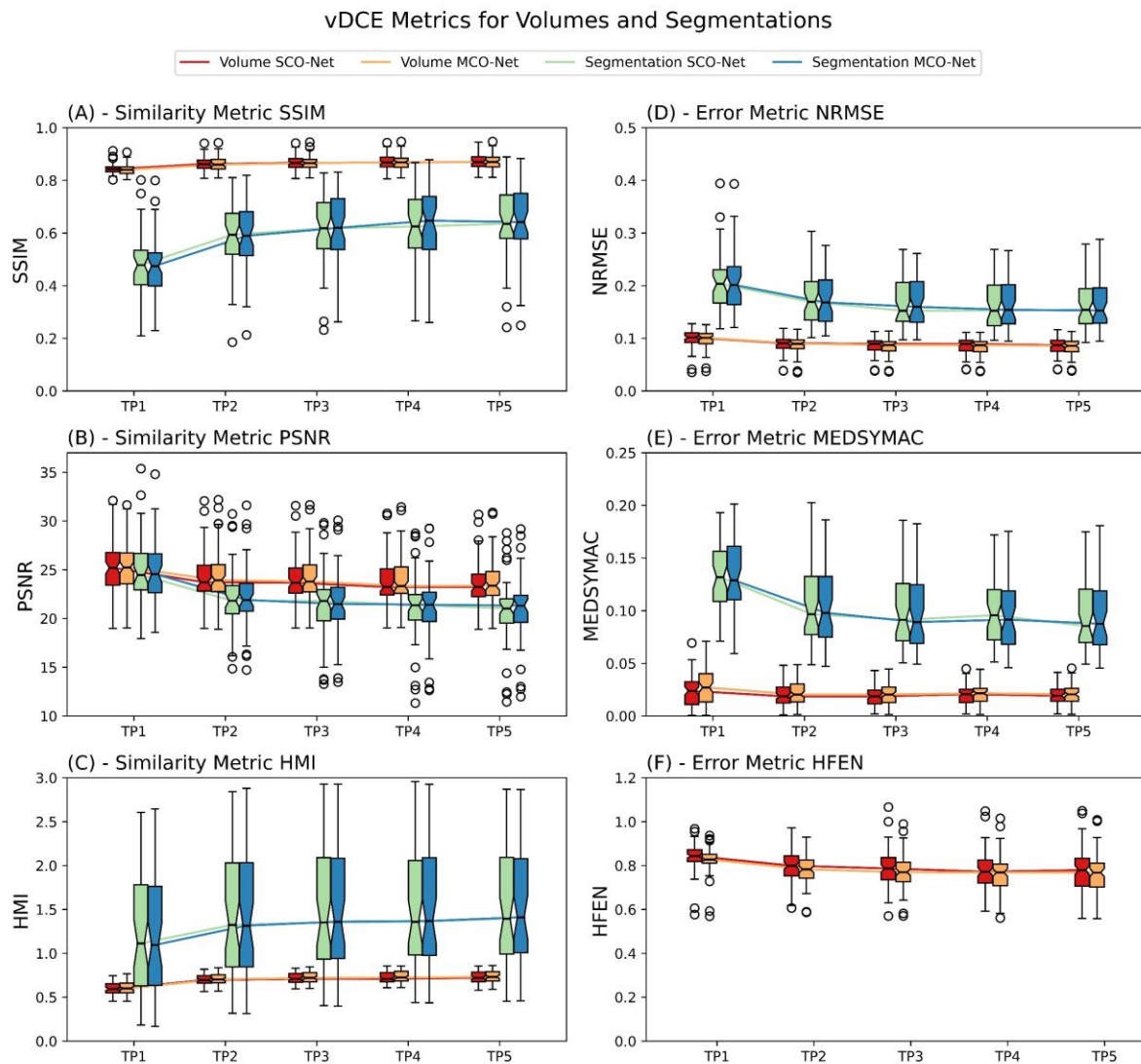
1 **Table 2.** Mean (\pm Std) similarity and error metrics of vDCE in image volume and segmentations of SCO-Net and
2 MCO-Net.

	Image Volume		Segmentation	
	SCO-Net	MCO-Net	SCO-Net	MCO-Net
SSIM (\uparrow)	0.864 \pm 0.025	0.863 \pm 0.026	0.591 \pm 0.133	0.596 \pm 0.131
PSNR [dB] (\uparrow)	24.288 \pm 2.379	24.424 \pm 2.416	22.065 \pm 3.448	22.204 \pm 3.395
HMI (\uparrow)	0.694 \pm 0.066	0.701 \pm 0.066	1.476 \pm 0.741	1.481 \pm 0.737
NRMSE (\downarrow)	0.089 \pm 0.015	0.087 \pm 0.016	0.174 \pm 0.049	0.173 \pm 0.049
MEDSYMACE (\downarrow)	0.020 \pm 0.011	0.022 \pm 0.012	0.106 \pm 0.032	0.105 \pm 0.032
HFEN (\downarrow)	0.796 \pm 0.079	0.780 \pm 0.073	-	-

SSIM – structural similarity index measure, PSNR – peak signal to noise ratio, HMI – histogram mutual information, NRMSE – normalized root mean square error, MEDSYMACE – median symmetric accuracy, HFEN – high frequency error norm.

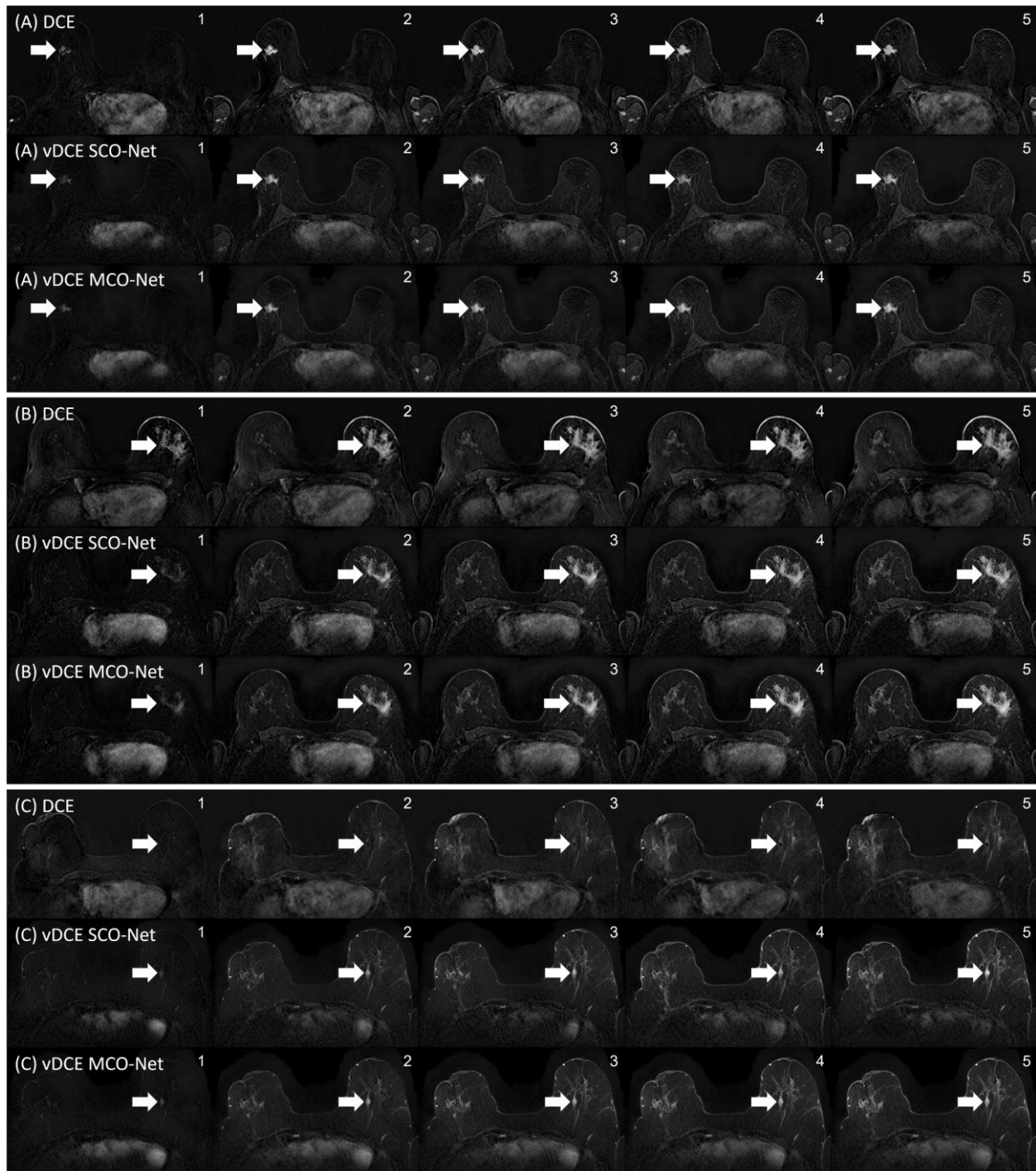
3
4 Furthermore, similarity and error metric values separated per time point for each of the above-
5 described setups are presented in Figure 3. It can be noted that the later time points result in
6 significantly higher SSIM and HMI values and lower PSNR. These trends are visible both in the image
7 volume and segmentations. Error metrics show significantly lower values for later timepoints.

8 The metrics in Table 2 and Figure 3 indicate a generally worse performance inside segmentations
9 compared to image volume. SSIM indicated no statistically significant ($p>0.05$) differences between
10 SCO-Net and MCO-Net in image volume. However, all other metrics showed significant effects ($p<0.05$)
11 between the two approaches. Significant differences ($p<0.05$) were found for SSIM, PSNR, HMI and
12 MEDSYMACE across different time points and approaches in image volume. NRMSE and HFEN showed
13 non-significant differences ($p>0.05$) across different time points.



1
2 **Fig. 3.** Similarity metrics for vDCE SCO-Net and MCO-Net in image volume as well as segmented findings are
3 presented. SSIM values show an increase and PSNR values a decrease for later time points both for the volume
4 and segmentations.

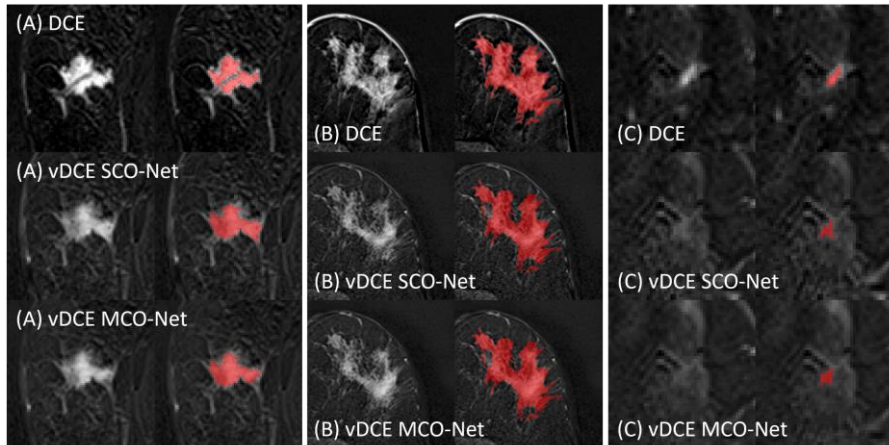
5 In Figure 4 five consecutive time points of three representative cases of both vDCE approaches and
6 of the original DCE series are shown. In both vDCE approaches the localization of the lesion is well
7 correlating with the DCE images as well as the signal intensity uptake over time.



1
2 **Fig. 4.** (A) - Exemplary case of a 60- to 70-year-old patient with a histopathologically confirmed malignant lesion
3 in the right breast. (B) - Exemplary case of a 60- to 70-year-old patient with a histopathologically confirmed non-
4 non-mass enhancement in the left breast. (C) Exemplary case of a 50- to 60-year-old patient having a cyst in the left
5 breast. Respectively for each case: Top: DCE series, Middle: vDCE SCO-Net, Bottom: vDCE MCO-Net. In each series
6 the depiction of the lesions is visible with an increasing signal intensity over time. In (A) stronger lesion
7 enhancement can be observed in the DCE image when compared to the vDCE approach. A weaker enhancement
8 appears for the 4th time point of the vDCE SCO-Net when compared to both the vDCE MCO-Net and DCE series.
9 (C) shows a false-positive enhancement in both vDCE approaches as cyst do not enhance in DCE series.

1 3.3 Evaluation of Ability to Depict Target Findings

2 Figure 5 displays three lesions with its corresponding segmentations performed on DCE as well as vDCE
3 SCO-Net and MCO-Net. The lesion shapes and location appear similarly. However, this also shows how
4 lesion depiction appears differently for the different approaches.



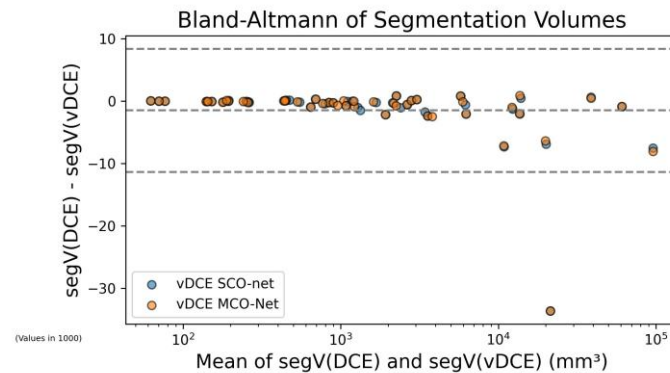
5
6 **Fig. 5.** Segmentation differences of lesions. Top: DCE image, Middle: vDCE SCO-Net, Bottom: vDCE MCO-Net. (A)
7 represents a malignant lesion, (B) a non-mass enhancement and (C) a malignant lesion.

8 Table 3 shows the quantitative evaluation of segmentation correctness using SCO-Net and MCO-Net
9 for vDCE generation. MCO-Net shows marginally higher mean DICE scores and IOU values and a lower
10 HD. For the original DCE series a $CNR=2.483\pm 1.350$ could be reached. This wasn't significantly different
11 from the CNR values reached by both of the vDCE approaches. No significant changes ($p>0.05$) were
12 observed between SCO-Net and MCO-Net for any of the investigated segmentation metrics. Figure 6
13 shows the Bland-Altman plot for the segmented volume segV.

14 **Table 3.** Quantitative Mean (\pm Std) Segmentation Metrics

Metric	SCO-Net	MCO-Net
DICE Score (\uparrow)	0.605 \pm 0.210	0.610 \pm 0.213
IoU (\uparrow)	0.465 \pm 0.211	0.471 \pm 0.216
HD (\downarrow)	9.454 \pm 10.709	9.179 \pm 10.650
CNR (\uparrow)	2.103 \pm 1.438	2.161 \pm 1.525

IoU – intersection over union, HD – Hausdorff Distance, CNR – contrast-to-noise ration



1
2 **Fig. 6.** Bland-Altman plot compares findings' segV in the 2nd time point of the DCE and vDCE series. An increase
3 in variation in larger segmentations for both vDCE approaches, not meeting the DCE segV observed similarly for
4 SCO-Net and MCO-Net. Overall, there is a systematic bias of -1.49 for vDCE approaches indicating
5 underestimation of finding sizes, although this bias diminishes for smaller segmentations. Outlier segmentation
6 case is shown in Figure 5 (C).

7 **4 Discussion**

8 This study evaluates the technical feasibility of generating a vDCE series for breast MRI comprising
9 individual images for each time point post GBCA injection using two neural network approaches. One
10 approach was trained on tissue characteristics at a specific time point, blinded to information of other
11 time points (SCO-Net), while the other was trained to consider the entire dynamic cycle (MCO-Net),
12 potentially benefiting from exploring cross-timepoint latency information. Both approaches depicted
13 image characteristics similar to DCE images. MCO-Net showed a higher performance with significant
14 differences across metrics except the SSIM compared to SCO-Net, in both image volume and
15 segmented benign and malignant findings.

16 For SCO-Net, lowest SSIM scores and highest error metrics were observed for the 1st time point of
17 the DCE series, gradually increasing towards the later time points. The SCO-Net trained for the 2nd DCE
18 series time point, which correlates to an acquisition approx. 80 seconds after GBCA administration,
19 reached a mean SSIM of 0.864 ± 0.025 aligning with prior studies by Chung et al. [9] and Kim et al. [10],
20 both trained networks on contrast-enhanced breast MRI data acquired approx. during this timeframe.
21 Mean SSIM scores across all time points (0.84-0.87) align with previously noted literature values of
22 0.76-0.91 [9,10,12,13,18], while PSNR scores 23.64-25.37dB fall to lower end of previously noted
23 literature ranges of 23.18-54.8dB [10,12,13,18]).

24 Despite minimal metric differences, a more homogenous tissue appearance over time points was
25 observed when using MCO-Net (see Figure 4). The MCO-Net approach aimed to incorporate contextual
26 information of time dependency of contrast-enhancement during training. It utilizes the
27 interdependent information of various post-contrast images and their time dependency of different

1 tissue compartments in the breast. The MCO-Net achieved higher PSNR and lower error metrics
2 compared to SCO-Net and non-significant differences in SSIM. The improvement in SSIM and error
3 metrics over time might correlate with higher signal in later time points. Despite this higher signal, the
4 increased noise level in tissue, decreased PSNR due to its sensitivity to noise.

5 Compared to Chung et al.'s study [9], our segmentations yielded a lower DICE coefficient between
6 DCE and vDCE approaches. This might be attributed to including more challenging cases with all
7 findings independent of malignancy or mass/non-mass enhancement type. Incorporating
8 segmentations into the loss function, as demonstrated by Chen et al. [16], may enhance performance
9 on finding-delineation and signal intensity representation. However, in this study, neither network
10 approach significantly outperformed the other in regards of comparing manual segmentations.

11 Utilizing 2D Networks increased dataset size and reduced resources needed for training networks
12 with high resolution images. Still, the images showed high inter-slice homogeneity in z-direction.
13 Exploring 3D architectures for vDCE prediction might further improve capabilities of such technique by
14 incorporating information of adjacent slices.

15 Our study has limitations, including the absence of a qualitative reader study to assess clinical
16 applicability, evaluations on enhancement kinetics over time and a potential segmentation bias.
17 Further clinical evaluations should be pursued in future research with larger cohorts. Additionally, the
18 study's reliance on data from a single MRI scanner model limits the generalizability of our findings,
19 emphasizing the need for research incorporating diverse equipment. Future work should also
20 investigate which MRI sequences are required for vDCE generation, in analogue to investigation of
21 Liebert et al. [21] to further explore dependency on acquisition techniques and generalizability.

22 **5 Conclusion**

23 In conclusion, providing a neural network information on tissue enhancement kinetics during training
24 in form of additional input channels, like in MCO-Net approach, significantly improved metrics for
25 generating a time-dependent series of vDCE breast MRI images from unenhanced acquisitions. Further
26 research in this area might be justified based on these findings and should incorporate individual
27 assessment of lesion specific enhancement characteristics as clinically relevant targets.

28 **Acknowledgments.** This project is funded by the Bavarian State Ministry of Science and Arts in the framework
29 of the bidt Graduate Center for Postdocs. The work was performed in (partial) fulfillment of the requirements
30 for obtaining the degree „Dr. rer. biol. hum.“ at the Friedrich-Alexander-Universität Erlangen-Nürnberg (FAU).

1 **Disclosure of Interests.** Authors H.S., A.L., S.B. have pending patent EPO No. 21197259.1 on topic of this
2 manuscript.

3 **References**

- 4 1. Mann, R. M., Cho, N., & Moy, L. (2019). Breast MRI: State of the Art. *Radiology*, 292(3), 520-536,
5 doi:10.1148/radiol.2019182947.
- 6 2. Tollens, F., Baltzer, P. A., Dietzel, M., Rübenthaler, J., Froelich, M. F., & Kaiser, C. G. (2021). Cost-effectiveness
7 of digital breast tomosynthesis vs. abbreviated breast MRI for screening women with intermediate risk
8 of breast cancer—how low-cost must MRI be? *Cancers*, 13(6), 1241.
- 9 3. Kočo, L., Balkenende, L., Appelman, L., Moman, M. R., Sponsel, A., Schimanski, M., et al. (2023). Optimized,
10 Person-Centered Workflow Design for a High-Throughput Breast MRI Screening Facility—A Simulation
11 Study. *Invest Radiol*, 10.1097.
- 12 4. Borthakur, A., Weinstein, S. P., Schnall, M. D., & Conant, E. F. (2019). Comparison of Study Activity Times for
13 "Full" versus "Fast MRI" for Breast Cancer Screening. *J Am Coll Radiol*, 16(8), 1046-1051,
14 doi:10.1016/j.jacr.2019.01.004.
- 15 5. McDonald, R. J., Weinreb, J. C., & Davenport, M. S. (2022). Symptoms Associated with Gadolinium Exposure
16 (SAGE): A Suggested Term. *Radiology*, 302(2), 270-273, doi:10.1148/radiol.2021211349.
- 17 6. Brünjes, R., & Hofmann, T. (2020). Anthropogenic gadolinium in freshwater and drinking water systems. *Water*
18 *Res*, 182, 115966, doi:10.1016/j.watres.2020.115966.
- 19 7. Le Goff, S., Barrat, J.-A., Chauvaud, L., Paulet, Y.-M., Gueguen, B., & Ben Salem, D. (2019). Compound-specific
20 recording of gadolinium pollution in coastal waters by great scallops. *Sci Rep*, 9(1), 8015.
- 21 8. Rogowska, J., Olkowska, E., Ratajczyk, W., & Wolska, L. (2018). Gadolinium as a new emerging contaminant of
22 aquatic environments. *Environ Toxicol Chem*, 37(6), 1523-1534, doi:10.1002/etc.4116.
- 23 9. Chung, M., Calabrese, E., Mongan, J., Ray, K. M., Hayward, J. H., Kelil, T., et al. (2022). Deep Learning to Simulate
24 Contrast-enhanced Breast MRI of Invasive Breast Cancer. *Radiology*, 213199,
25 doi:10.1148/radiol.213199.
- 26 10. Kim, E., Cho, H.-H., Kwon, J., Oh, Y.-T., Ko, E. S., & Park, H. (2022). Tumor-Attentive Segmentation-Guided
27 GAN for Synthesizing Breast Contrast-Enhanced MRI Without Contrast Agents. *IEEE Journal of*
28 *Translational Engineering in Health and Medicine*, 11, 32-43.
- 29 11. Müller-Franzes, G., Huck, L., Tayebi Arasteh, S., Khader, F., Han, T., Schulz, V., et al. (2023). Using Machine
30 Learning to Reduce the Need for Contrast Agents in Breast MRI through Synthetic Images. *Radiology*,
31 222211, doi:10.1148/radiol.222211.
- 32 12. Zhang, T., Han, L., D'Angelo, A., Wang, X., Gao, Y., Lu, C., et al. Synthesis of Contrast-Enhanced Breast MRI
33 Using T1- and Multi-b-Value DWI-Based Hierarchical Fusion Network with Attention Mechanism. In H.
34 Greenspan, A. Madabhushi, P. Mousavi, S. Salcudean, J. Duncan, T. Syeda-Mahmood, et al. (Eds.),
35 *Medical Image Computing and Computer Assisted Intervention – MICCAI 2023, Cham, 2023// 2023* (pp.
36 79-88): Springer Nature Switzerland
- 37 13. Zhang, T. Y., Tan, T., Han, L. Y., Wang, X., Gao, Y., van Dijk, J., et al. (2024). IMPORTANT-Net: Integrated MRI
38 multi-parametric increment fusion generator with attention network for synthesizing absent data.
39 *Information Fusion*, 108, doi:ARTN 102381
40 10.1016/j.inffus.2024.102381.
- 41 14. Li, X., Morgan, P. S., Ashburner, J., Smith, J., & Rorden, C. (2016). The first step for neuroimaging data analysis:
42 DICOM to NiftI conversion. *J Neurosci Methods*, 264, 47-56, doi:10.1016/j.jneumeth.2016.03.001.
- 43 15. Liebert, A., Hadler, D., Ehring, C., Schreiter, H., Brock, L., Kapsner, L., et al. (2024). *Feasibility to virtually*
44 *generate T2 fat-saturated breast MRI by convolutional neural networks*.
- 45 16. Chen, C., Raymond, C., Speier, W., Jin, X., Cloughesy, T. F., Enzmann, D., et al. (2022). Synthesizing MR image
46 contrast enhancement using 3D high-resolution ConvNets. *IEEE Transactions on Biomedical Engineering*.
- 47 17. Wang, Z., Bovik, A. C., Sheikh, H. R., & Simoncelli, E. P. (2004). Image quality assessment: from error visibility
48 to structural similarity. *IEEE transactions on image processing*, 13(4), 600-612.
- 49 18. Wang, P., Nie, P., Dang, Y., Wang, L., Zhu, K., Wang, H., et al. (2021). Synthesizing the First Phase of Dynamic
50 Sequences of Breast MRI for Enhanced Lesion Identification. *Front Oncol*, 11, 792516,
51 doi:10.3389/fonc.2021.792516.

- 1 19. Morley, S. K., Brito, T. V., & Welling, D. T. (2018). Measures of Model Performance Based On the Log Accuracy
2 Ratio. *Space Weather-the International Journal of Research and Applications*, 16(1), 69-88,
3 doi:10.1002/2017sw001669.
- 4 20. Fedorov, A., Beichel, R., Kalpathy-Cramer, J., Finet, J., Fillion-Robin, J. C., Pujol, S., et al. (2012). 3D Slicer as
5 an image computing platform for the Quantitative Imaging Network. *Magn Reson Imaging*, 30(9), 1323-
6 1341, doi:10.1016/j.mri.2012.05.001.
- 7 21. Liebert, A., Schreiter, H., Kapsner, L. A., Eberle, J., Ehring, C., Hadler, D., et al. (2024). Impact of Non-Contrast
8 Enhanced Imaging Input Sequences on the Generation of Virtual Contrast-Enhanced Breast MRI Scans
9 using Neural Networks. *medRxiv*, 2024.2005.2003.24306067, doi:10.1101/2024.05.03.24306067.
- 10
- 11