

Blood p-tau association with cognitive status and future memory decline in early Alzheimer's disease

Authors: Fernando Gonzalez-Ortiz, MD, MSc^{1,2*}; Bjørn-Eivind Kirsebom, PhD^{3,4,5*}; Yara Yakoub, MSc⁶; Julia K. Gundersen, MD, PhD^{5,7}; Lene Pålhaugen, MD^{5,7}; Knut Waterloo, PhD^{3,4}; Per Selnes, MD, PhD^{5,7}; Jonas Alexander Jarholm, MD^{5,7}; Berglind Gísladóttir, MSc^{5,8}; Arvid Rongve, MD, PhD^{9,10}; Ragnhild Eide Skogseth, MD, PhD^{11,12}; Geir Bråthen, MD, PhD^{13,14}; Dag Aarsland, MD, PhD^{15,16}; Michael Turton, PhD¹⁷; Peter Harrison, MA¹⁷; Henrik Zetterberg, MD, PhD^{1,2,18,19,20,21}; Sylvia Villeneuve, PhD⁶; PREVENT AD research group⁶; Tormod Fladby, MD, PhD^{4,5†}; Kaj Blennow, MD, PhD^{1,2,22,23†}

- 1.- Inst. of Neuroscience and Physiology, University of Gothenburg, Mölndal, Sweden
- 2.- Clinical Neurochemistry Lab, Sahlgrenska University Hospital, Mölndal, Sweden
- 3.- Department of Neurology, University Hospital of North Norway, Tromsø, Norway
- 4.- Department of Psychology, Faculty of Health Sciences, The Arctic University of Norway, Tromsø, Norway
- 5.- Department of Neurology, Akershus University Hospital, Lørenskog, Norway
- 6.-Douglas Mental Health University Institute, Centre for Studies on the Prevention of Alzheimer's Disease (StoP-AD), Montreal, Quebec, Canada
- 7.- Division of Physiology, Institute of Basic Medical Sciences, University of Oslo, Oslo, Norway
- 8.- University of Oslo, Institute for Clinical Medicine, Campus Ahus
9. Department of Neuropsychology, Haugesund Hospital, Haugesund, Norway
10. Department of Clinical Medicine (K1), University of Bergen, Bergen, Norway
11. Department of Geriatric Medicine, Haraldsplass Deaconess Hospital, Bergen, Norway.
12. Department of Clinical Sciences, Faculty of Medicine, University of Bergen, Norway.
13. Department of Neurology and Clinical Neurophysiology, University Hospital of Trondheim, Trondheim, Norway
14. Department of Neuromedicine and Movement Science, Faculty of Medicine and Health Sciences, Norwegian University of Science and Technology, Trondheim, Norway
- 15.- Department of Neurology and Clinical Neurophysiology, University Hospital of Trondheim, Trondheim, Norway
- 16.- Department of Old Age Psychiatry. Institute of psychiatry, Psychology and Neuroscience King's College London, London, UK.
- 17.- Bioventix Plc, 7 Romans Business Park, East Street, Farnham, Surrey GU9 7SX, UK

Supplementary appendix

18.- Department of Neurodegenerative Disease, UCL Institute of Neurology, Queen Square, London, UK

19.- UK Dementia Research Institute at UCL, London, UK

20.- Hong Kong Center for Neurodegenerative Diseases, Clear Water Bay, Hong Kong, China

21.- Wisconsin Alzheimer's Disease Research Center, University of Wisconsin School of Medicine and Public Health, University of Wisconsin-Madison, Madison, WI, USA

22.- Paris Brain Institute, ICM, Pitié-Salpêtrière Hospital, Sorbonne University, Paris, France

23.- Neurodegenerative Disorder Research Center, Division of Life Sciences and Medicine, and Department of Neurology, Institute on Aging and Brain Disorders, University of Science and Technology of China and First Affiliated Hospital of USTC, Hefei, P.R. China

*Joint first authors

†Joint senior authors

Correspondence:

Fernando Gonzalez-Ortiz, Clinical Neurochemistry Lab House V3, floor 2 Mölndal Hospital

Street Address: Biskopsbogatan 27 SE-43180 Mölndal, Sweden. Email: fernando.gonzalez.ortiz@gu.se

Bjørn-Eivind Kirsebom, Neurology department, University Hospital of North Norway Hansine Hansens veg 67, 9019 Tromsø, Norway. Email: bjorneivind.kirsebom@gmail.com

Key words: Predementia, CSF, Plasma, PET, Amyloid, Tau

Supplementary methods*Applied algorithm for assessing cognitive normalcy and impairment.*

The present study included cases and controls from the Dementia Disease Initiation (DDI) cohort. The DDI cohort includes predementia cases with either SCD or MCI staged according to published criteria^{1,2} and participants recruited as controls primarily from spouses of recruited patients, and secondarily from advertisements in local news media and also orthopaedic patients who had lumbar punctures due to surgery and reported no experience of subjective cognitive decline. However, for this and also for previous study³, we here employed an actuarial definition of cognitive normalcy and mild cognitive impairment based on neuropsychological test battery performance. This entails regarding all cases with at least one or more impaired cognitive scores as MCI, and cases with all scores normal as cognitively normal (CN), regardless of subjectively reported symptoms. This is supported by evidence showing that subjectively reported symptoms, in conjunction with objectively assessed impairment may not be a reliable criterion for MCI⁴. Here, we determined MCI when results were 1.5 SD below the normative mean within one or more cognitive domains. Our neuropsychological battery included the following domains/tests: 1) Delayed memory recall (Consortium to Establish a Registry for Alzheimer's Disease (CERAD) word list delayed recall)⁵, 2) executive function (Trail Making Test part B (TMT-B))⁵, 3) language/verbal fluency (Controlled Oral Word Association Test (COWAT))⁶ and 4) visuoperceptual ability (Visual Object and Space Perception Battery (VOSP) silhouettes)⁷. This procedure identified that n=9 (9.3%) of those recruited as controls had one or more impaired neuropsychological test scores and treated as MCI. Of these, none had normal A/T markers (n=2, A+/T-; n=3 A+/T+; n= 4, A-/T+). See the table below for a detailed overview of the cases within each A/T split by CN & MCI.

Overview of cases recruited as controls, SCD and MCI in CN/MCI A/T groups.

	CN A-/T-	CN A+/T-	MCI A+/T-	CN A+/T+	MCI A+/T+	CN A-/T+	MCI A-/T+
Recruited as controls n (%)	58 (34.3)	8 (30.8)	2 (8.3)	8 (20)	3 (2.9)	14 (41.2)	4 (12.1)
SCD n (%)	111 (65.7)	18 (69.2)	0 (0)	32 (80)	0 (0)	20 (58.8)	0 (0)
MCI n (%)	0 (0)	0 (0)	22 (91.7)	0 (0)	102 (97.1)	0 (0)	29 (87.9)

Abbreviations: CN, Cognitively Normal; MCI, Mild Cognitive Impairment; SCD, Subjective Cognitive Decline; A+/-, pathological/normal CSF A β 42/40 ratio; T+/-, pathological/normal CSF ptau181; n = number of cases.

Supplementary appendix

Supplementary statistics

Analyses were performed in Rstudio (R version 4.3.2). For AUC, NPV, PPV and Delong's tests, the "pROC" package was used⁸. All plots were generated using the "ggplot2"⁹ and "ggpubr"¹⁰ packages. Using the "lme4" and "lmerTest" packages^{11,12}, Linear Mixed Models (LMMs) were fitted to assess associations between baseline p-tau epitopes in CSF/Plasma and future memory decline (CERAD word list recall subtest) for A- (A-/T- & A+/T-) and A+ (A+/T- & A+/T+) separately. Covariates included age at baseline, years of education and sex and were chosen due to their influence on CERAD delayed recall in a previous normative study⁵. A detailed account of covariate influence on the CERAD delayed recall scores for each model can be found in table S3. All models were fitted with random intercept for subject and random slope for time (Years since baseline). To allow for comparisons of relative strength between biomarkers and memory decline over time between models, all continuous variables, apart from years since baseline, were standardized (z-standardization). We used the "ggeffects"¹³ package to generate a data frame based on the LMM predictions (unstandardized continuous variables), and plotted the results using the "ggplot2" package⁹. Due to slight differences in CSF/plasma p-tau epitopes measured at baseline (see table 1 in the manuscript), number of individual cases in each model, as well as observations over time varied slightly. Between 224 and 227 subjects (between 556 to 572 observations over time) in the A β - group, and between 188 and 191 subjects (between 404 to 412 observations over time). Similarly, mean follow-up time varied slightly (A β -, 3.37 – 3.39 Years; A β +, 3.22 – 3.23 Years since baseline). Please see table S1 (excel document) for a detailed overview. Finally, Linear regression models with log-transformed plasma biomarker as dependent variable and CSF/serum albumin ratio as the dependent variable were fitted. For ease of interpretation between models, standardized betas (β) are reported. Interaction terms with the A/T group was included in separate models. Overall slope and slope per group were computed using the "emmeans" R package¹⁴, and p-values were adjusted using FDR. Figure S3 shows the results and was generated using the "ggeffects"¹³ in combination with "ggplot2" packages⁹.

Supplementary appendix

Supplementary table 2 (S2). Demographics and biomarker differences between-group for the PreventAD cohort.

	Full sample (N = 188)	CN A β - (N = 118)	CN A β + (N = 49)	MCI A β + (N = 21)	Post hoc comparison
Age, years	67.76 (4.96)	67.33 (4.92)	67.69 (5.02)	70.30 (4.49)	< 0.05 ^b
Education, years	15.64 (3.04)	15.89 (3.06)	15.18 (2.96)	15.29 (3.03)	n.s
Sex,F:M (%F)	137 (73)	80 (68)	39 (79)	18 (86)	n.s
APOE carriers, n (%)	70 (37)	32 (27)	27 (55)	11 (52)	<.001 ^a <.05 ^b
Global amyloid, SUVR	1.30 (0.27)	1.15 (0.06)	1.49 (0.26)	1.68 (0.40)	<.001 ^{a,b,c}
Plasma p-tau217(pg/ml)	2.65 (1.52)	2.14 (0.71)	3.09 (1.22)	4.64 (3.08)	<.001 ^{a,b,c}
MoCA	28.31 (1.50)	28.15 (1.47)	28.78 (1.25)	28.10 (1.95)	n.s
RBANS	103.91 (9.00)	104.45 (9.10)	103.62 (9.12)	101.40 (7.99)	n.s.

Data represent the Characteristics of the samples included in the PREVENT-AD cohort. Overall, n = 188 participants were included in the study, n = 118 of whom were classified as cognitively unimpaired (CN) A β -PET negative, n = 49 CN A β -PET positive and n = 21 cognitively impaired A β -PET positive participants. One-way analysis of variance (ANOVA) with Tukey post hoc was used for continuous variables, and chi-square tests for categorical variables. *Notes:*

^a difference between CN A β - and CN A β +; ^b differences between CN A β - and MCI A β +; ^c differences between CN A β + and MCI A β + individuals. Notes: two participants did not have p-tau217 values, one participant had missing MoCA score. F = female

APOE = apolipoprotein-E genotype; SUVR = Standardized Uptake Value Ratio; MoCA = Montreal Cognitive Assessment; RBANS = Repeatable Battery for the Assessment of Neuropsychological status; n.s. = not significant

Supplementary table 3A (S3A). ROC analyses of plasma P-tau markers in Dementia Disease Initiation (Cohort 1)

	Marker	Standard of truth	AUC (95 % CI)	Cases/ controls	Spec.	Sens.	Cut-off	Delong's test (p)
A/T	P-tau 217	A-/T- vs	.778 (.699-.856)	49/161	.720	.776	≥1.90	^c
	P-tau 181	A+/T-	.731 (.646-.815)	50/168	.827	.580	≥11.89	^c
	P-tau 231	A+/T-	.595 (.505-.686)	49/166	.753	.469	≥6.14	^c
	P-tau 217	A-/T- vs	.876 (.837-.915)	144/161	.869	.771	≥2.36	-2.17 (<.05) ^a
	P-tau 181	A+/T+	.820 (.773-.868)	143/168	.774	.762	≥10.76	-1.82 (n.s.) ^a
	P-tau 231	A+/T+	.683 (.624-.743)	145/166	.789	.531	≥6.57	-1.59 (n.s.) ^a
CN / MCI A+	P-tau 217	CN A- vs	.786 (.717-.854)	66/161	.717	.854	≥2.35	^c
	P-tau 181	CN A+	.784 (.720-.847)	66/168	.762	.682	≥10.58	^c
	P-tau 231	CN A+	.616 (.533-.698)	66/166	.753	.485	≥6.14	^c
	P-tau 217	CN A- vs	.886 (.846-.925)	127/161	.901	.748	≥2.44	-2.47 (<.05) ^b
	P-tau 181	MCI A+	.804 (.752-.857)	127/168	.774	.748	≥10.76	-0.49 (n.s.) ^b
	P-tau 231	MCI A+	.684 (.602-.727)	128/166	.717	.617	≥5.76	-1.31 (n.s.) ^b
All A+	P-tau 217	CN A-/T- vs	.851 (.812-.891)	193/161	.870	.715	≥2.36	^c
	P-tau 181	All A+	.797 (.750-.844)	193/168	.774	.720	≥10.76	^c
	P-tau 231	All A+	.661 (.605-.717)	194/166	.765	.526	≥6.30	^c

Abbreviations: CSF= Cerebrospinal fluid; AUC = Area Under curve; CI= confidence interval. ^a=Delong's test CN vs MCI A+; ^b=Delong's test A+/T- vs A+/T+; ^c=No Delong's test performed. Please note that A+ and T+ were determined by CSF Mesoscale Discovery A β 42/40 ratio and CSF innotest P-tau 181. In all models, the CN A-/T- cases are controls. Cut-off determined with the Youden index.

Supplementary appendix

Supplementary table 3B (S3B). ROC analyses of CSF P-tau markers in Dementia Disease Initiation (Cohort 1)

	Marker	Standard of truth	AUC (95 % CI)	Cases/controls	Spec.	Sens.	Cut-off	Delong's test (p)
A/T	P-tau 217	A-/T- vs	.912 (.860-.961)	50/169	.893	.820	≥66.38	c
	P-tau 181	A+/T-	.794 (.729-.860)	50/167	.647	.860	≥92.24	c
	P-tau 231		.885 (.834-.935)	50/167	.850	.800	≥371.09	c
	P-tau 217	A-/T- vs	.994 (.989-.999)	144/169	.964	.986	≥86.81	-3.23 (<.01) ^a
	P-tau 181	A+/T+	.946 (.924-.968)	141/167	.844	.879	≥170.63	-4.32 (<.001) ^a
	P-tau 231		.988 (.977-.998)	141/167	.964	.950	≥488.86	-3.89 (<.001) ^a
CN / MCI A+	P-tau 217	CN A- vs	.957 (.932-.981)	66/169	.932	.981	≥77.11	c
	P-tau 181	CN A+	.872 (.823-.872)	66/167	.683	.909	≥104.58	c
	P-tau 231		.934 (.900-.969)	66/167	.850	.909	≥371.09	c
	P-tau 217	CN A- vs	.981 (.964-.999)	128/169	.965	.953	≥85.34	-1.58 (n.s.) ^b
	P-tau 181	MCI A+	.924 (.896-.952)	125/167	.814	.864	≥160.76	-1.83 (n.s.) ^b
	P-tau 231		.975 (.958-.991)	125/167	.976	.896	≥505.13	-2.08 (<.05) ^b
All A+	P-tau 217	CN A-/T- vs	.973 (.957-.989)	194/169	.964	.907	≥83.54	c
	P-tau 181	All A+	.906 (.877-.934)	191/167	.844	.785	≥170.63	c
	P-tau 231		.961 (.942-.979)	191/167	.976	.827	≥505.13	c

Abbreviations: CSF= Cerebrospinal fluid; AUC = Area Under curve; CI= confidence interval. ^a=Delong's test CN vs MCI A+; ^b=Delong's test A+/T- vs A+/T+; ^c=No Delong's test performed. Please note that A+ and T+ were determined by CSF Mesoscale Discovery Aβ42/40 ratio and CSF innotest P-tau 181. In all models, the CN A-/T- cases are controls. Cut-off determined with the Youden index.

Supplementary appendix

Supplementary table 4A (S4A). Positive and negative predictive values for Plasma p-tau markers in Dementia Disease Initiation (Cohort 1)

Versus	Plasma marker	CSF negative	CSF positive	NPV PPV
CN A- vs CN A+	P-tau217 Negative (%)	140 (84.3) TN	26 (15.7) FN	.843
	P-tau217 Positive (%)	21 (34.4) FP	40 (65.6) TP	.656
CN A- vs MCI A+	P-tau217 Negative (%)	145 (81.9) TN	32 (18.1) FN	.819
	P-tau217 Positive (%)	16 (14.4) FP	95 (85.6) TP	.856
All A- vs All A+	P-tau217 Negative (%)	140 (71.8) TN	55 (28.2) FN	.718
	P-tau217 Positive (%)	21 (13.2) FP	138 (86.8) TP	.868
A-/T- vs A+/T-	P-tau217 Negative (%)	116 (91.3) TN	11 (8.7) FN	.913
	P-tau217 Positive (%)	45 (54.2) FP	38 (45.8) TP	.458
A-/T- vs A+/T+	P-tau217 Negative (%)	140 (80.9)	33 (19.1)	.809
	P-tau217 Positive (%)	21 (15.9)	111 (84.1)	.841
CN A- vs CN A+	P-tau181 Negative (%)	128 (85.9) TN	21 (14.1) FN	.859
	P-tau181 Positive (%)	40 (47.1) FP	45 (52.9) TP	.529
CN A- vs MCI A+	P-tau181 Negative (%)	130 (80.2) TN	32 (19.8) FN	.802
	P-tau181 Positive (%)	38 (28.6) FP	95 (71.4) TP	.714
CN A- vs CN A+	P-tau181 Negative (%)	130 (70.7) TN	54 (29.3) FN	.707
	P-tau181 Positive (%)	38 (21.5) FP	139 (78.5) TP	.785
A-/T- vs A+/T-	P-tau181 Negative (%)	139 (86.9) TN	21 (13.1) FN	.869
	P-tau181 Positive (%)	29 (50.0) FP	29 (50.0) TP	.500
A-/T- vs A+/T+	P-tau181 Negative (%)	130 (79.3)	34 (20.7)	.793
	P-tau181 Positive (%)	38 (25.9)	109 (74.1)	.741
CN A- vs CN A+	P-tau231 Negative (%)	125 (78.6) TN	34 (21.4) FN	.786
	P-tau231 Positive (%)	41 (56.2) FP	32 (43.8) TP	.438
CN A- vs MCI A+	P-tau231 Negative (%)	119 (70.8) TN	49 (29.2) FN	.708
	P-tau231 Positive (%)	47 (37.3) FP	79 (62.7) TP	.627
All A- vs All A+	P-tau231 Negative (%)	127 (58.0) TN	92 (42.0) FN	.580
	P-tau231 Positive (%)	39 (27.7) FP	102 (72.3) TP	.723
A-/T- vs A+/T-	P-tau231 Negative (%)	125 (82.8) TN	26 (17.2) FN	.828
	P-tau231 Positive (%)	41 (64.1) FP	23 (35.9) TP	.359
A-/T- vs A+/T+	P-tau231 Negative (%)	131 (65.8)	68 (34.2)	.658
	P-tau231 Positive (%)	35 (31.2)	77 (68.8)	.688

Abbreviations: CSF= Cerebrospinal fluid; NPV = Negative Predictive Value; PPV = Positive Predictive Value; TP = True Positive; TN = True Negative; FN = False Negative. Please note that A+ and T+ were determined by CSF Mesoscale Discovery Aβ42/40 ratio and CSF innotest P-tau 181. In all models, the CN A-/T- cases are controls. Cut-off applied according to the Youden index for each model (see table 1A).

Supplementary appendix

Supplementary table 4B (S4B). Positive and negative predictive values for CSF p-tau markers in Dementia Disease Initiation (Cohort 1)

Versus	CSF marker	CSF negative	CSF positive	NPV PPV
CN A- vs CN A+	P-tau217 Negative (%)	160 (94.1) TN	10 (5.9) FN	.941
	P-tau217 Positive (%)	9 (13.8) FP	56 (86.2) TP	.862
CN A- vs MCI A+	P-tau217 Negative (%)	163 (96.4) TN	6 (3.6) FN	.964
	P-tau217 Positive (%)	6 (4.7) FP	122 (95.3) TP	.953
All A- vs All A+	P-tau217 Negative (%)	163 (90.1) TN	18 (9.9) FN	.901
	P-tau217 Positive (%)	6 (3.3) FP	176 (96.7) TP	.967
A-/T- vs A+/T-	P-tau217 Negative (%)	151 (94.4) TN	9 (5.62) FN	.944
	P-tau217 Positive (%)	18 (30.3) FP	41 (69.5) TP	.695
A-/T- vs A+/T+	P-tau217 Negative (%)	163 (98.8)	2 (1.2)	.988
	P-tau217 Positive (%)	6 (4.1)	142 (95.9)	.959
CN A- vs CN A+	P-tau181 Negative (%)	114 (95.0) TN	6 (5.0) FN	.950
	P-tau181 Positive (%)	53 (46.9) FP	60 (53.1) TP	.531
CN A- vs MCI A+	P-tau181 Negative (%)	136 (88.9) TN	17 (11.1) FN	.889
	P-tau181 Positive (%)	31 (22.3) FP	108 (77.0) TP	.777
All A- vs All A+	P-tau181 Negative (%)	141 (77.5) TN	41 (22.5) FN	.775
	P-tau181 Positive (%)	26 (14.8) FP	150 (85.2) TP	.852
A-/T- vs A+/T-	P-tau181 Negative (%)	108 (93.9) TN	7 (6.1) FN	.939
	P-tau181 Positive (%)	59 (57.8) FP	43 (42.2) TP	.422
A-/T- vs A+/T+	P-tau181 Negative (%)	141 (89.2) TN	17 (10.8) FN	.892
	P-tau181 Positive (%)	26 (17.3) FP	124 (82.7) TP	.827
CN A- vs CN A+	P-tau231 Negative (%)	142 (95.9) TN	6 (4.1) FN	.959
	P-tau231 Positive (%)	25 (29.4) FP	60 (70.6) TP	.706
CN A- vs MCI A+	P-tau231 Negative (%)	163 (92.6) TN	13 (7.4) FN	.926
	P-tau231 Positive (%)	4 (3.4) FP	112 (96.6) TP	.966
All A- vs All A+	P-tau231 Negative (%)	163 (83.2) TN	33 (16.8) FN	.832
	P-tau231 Positive (%)	4 (2.5) FP	158 (97.5) TP	.975
A-/T- vs A+/T-	P-tau231 Negative (%)	142 (93.4) TN	10 (6.6) FN	.934
	P-tau231 Positive (%)	25 (38.5) FP	40 (61.5) TP	.615
A-/T- vs A+/T+	P-tau231 Negative (%)	161 (95.8)	7 (4.2)	.958
	P-tau231 Positive (%)	6 (4.3)	134 (95.7)	.957

Abbreviations: CSF= Cerebrospinal fluid; NPV = Negative Predictive Value; PPV = Positive Predictive Value; TP = True Positive; TN = True Negative; FN = False Negative. Please note that A+ and T+ were determined by CSF Mesoscale Discovery A β 42/40 ratio and CSF innotest P-tau 181. In all models, the CN A-/T- cases are controls. Cut-off applied according to the Youden index for each model (see table 1B).

Supplementary appendix

Supplementary Table 5 (S5). Between-group differences between CN and MCI within the pathological A/T groups split for p-tau epitopes and BD-tau in CSF and plasma.

	A/T groups by cognitive status (n)					
	CN A+/T- 26	MCI A+/T- 24	CN A+/T+ 40	MCI A+/T+ 105	CN A-/T+ 34	MCI A-/T+ 33
Plasma p-tau181^a	13.24	12.73	14.50	16.19	11.96	11.28
Mean (SD) [n]	(6.63)	(6.30)	(5.72)	(7.20) [103]	(6.16) [33]	(7.33)
Plasma p-tau217^a	2.42	2.97	2.87	3.79**	1.99	2.00
Mean (SD) [n]	(0.95)	(1.25) [23]	(1.09)	(1.60) [104]	(0.92)	(1.17) [32]
Plasma p-tau231^a	5.54	7.15	7.92	7.91	6.58	6.05
Mean (SD) [n]	(3.57)	(5.39) [23]	(5.33)	(5.00)	(4.01) [32]	(4.26)
CSF p-tau181^a	218.23	193.30	413.75	542.31	181.81	154.30
Mean (SD) [n]	(130.37)	(115.33)	(270.91)	(500.87) [101]	(103.56) [33]	(105.71) [31]
CSF p-tau217^a	100.70	112.26	196.07	237.89***	76.24	70.56
Mean (SD) [n]	(46.90)	(39.91)	(70.95)	(69.57) [104]	(40.76) [33]	(22.05) [31]
CSF p-tau231^a	512.38	500.40	891.94	1,219.43***	422.66	400.51
Mean (SD) [n]	(195.36)	(136.45)	(477.55)	(569.15) [101]	(157.67) [33]	(91.02) [31]

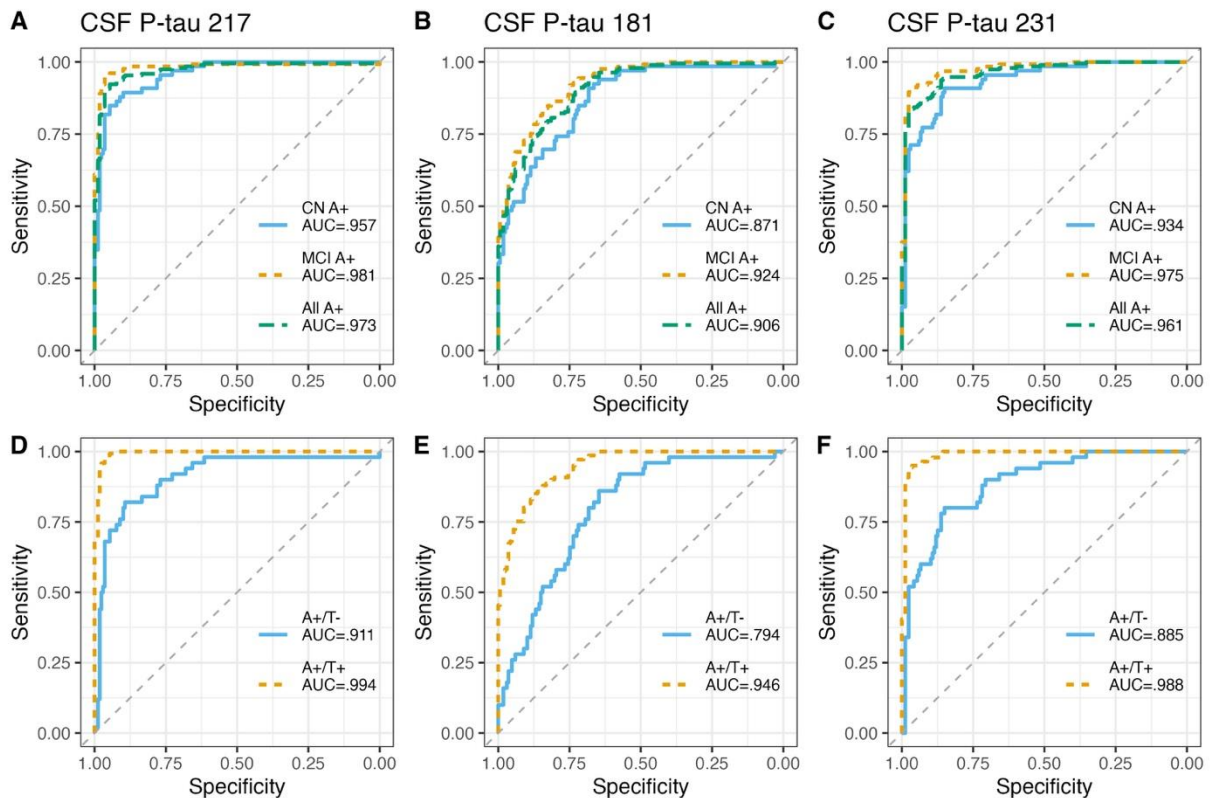
Abbreviations: A+/-, positive or negative CSF marker for A β plaques; T+/-, positive or negative marker for CSF p-tau181; CN, Cognitively normal; MCI, Mild Cognitive Impairment; SD, standard deviation; n, number of cases; ^a, measured in pg/mL; *, <.05, **, <.01, ***<.001 (between CN and MCI within each A/T group)

Supplementary appendix



Supplementary figure 1 (S1). Area Under Curve (AUC), Positive and negative predictive values (PPV, NPV) for the different Receiver Operating Curve models on cohort 1. Shows a comparison of AUCs, PPVs and NPVs between the different ROC models performed in Dementia Disease Initiation (cohort 1).

Supplementary appendix



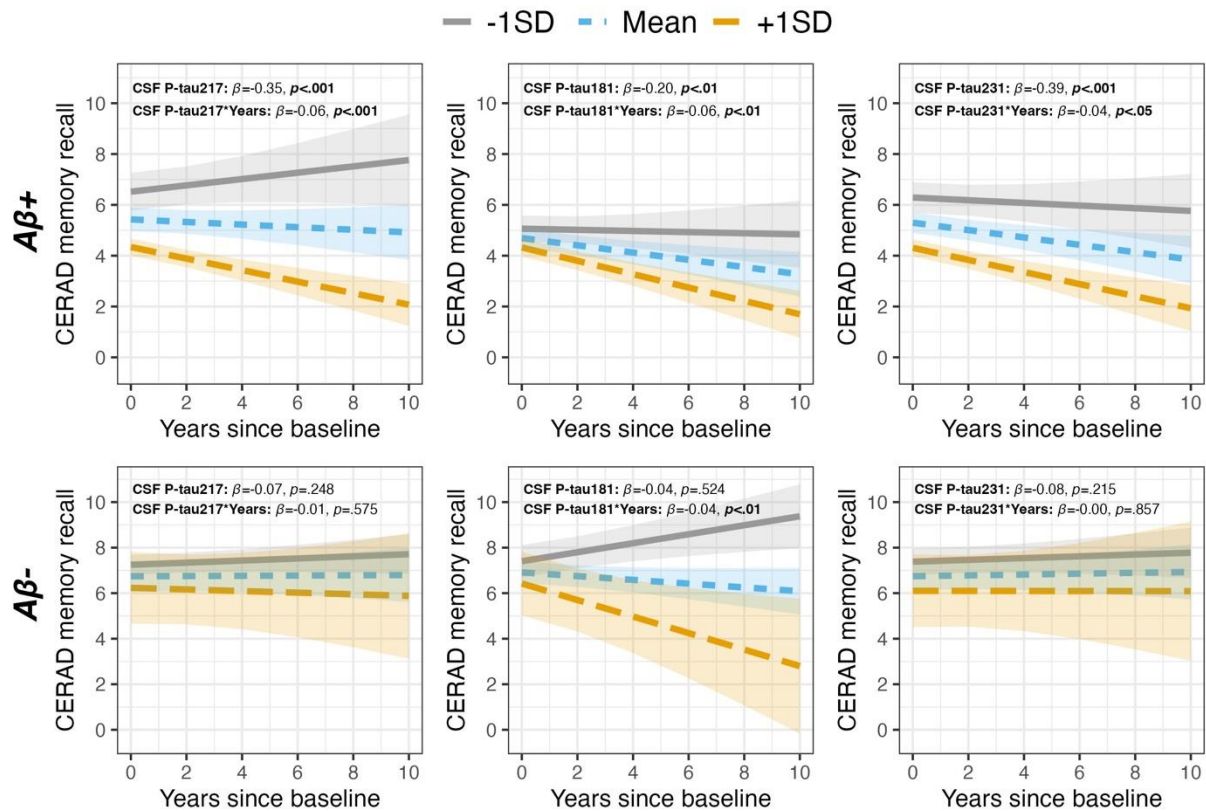
Supplementary figure 2 (S2). Diagnostic accuracy of CSF p-tau markers in cohort-1. Receiver Operating Characteristic (ROC) curves and corresponding areas under the curve (AUC) showing the discriminative ability of the different CSF p-tau biomarkers. **Figure S2A-C)** ROC curves and AUCs of CSF p-tau217, p-tau181 and p-tau231 identifying A β ⁺ individuals based on their cognitive status. **Figure S2D-F)** ROC curves and AUCs of CSF p-tau217, p-tau181 and p-tau231 identifying A β ⁺ individuals according to their A/T profile in CSF.

Supplementary appendix



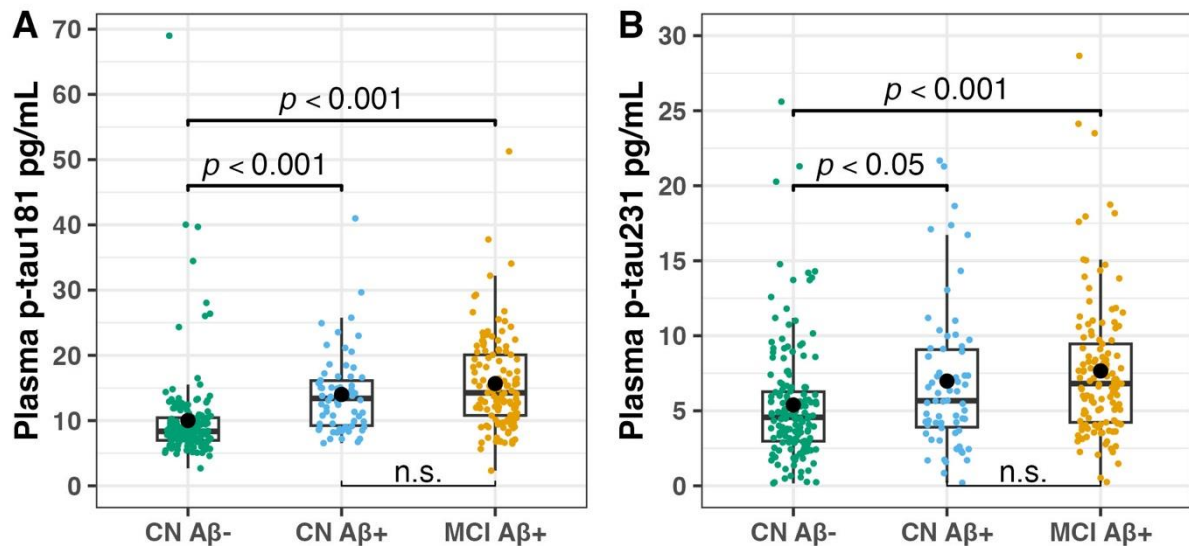
Supplementary figure 3 (S3). Mean fold change increase in preclinical and prodromal cases in cohort 1. This figure shows the mean fold change increase relative to cognitively normal (CN) A-/T- controls for the different p-tau epitopes measured in both plasma and CSF in cohort 1. The top figures shows cases with preclinical (CN A+), and prodromal (Mild Cognitive Impairment (MCI) A+), both split by T status.

Supplementary appendix

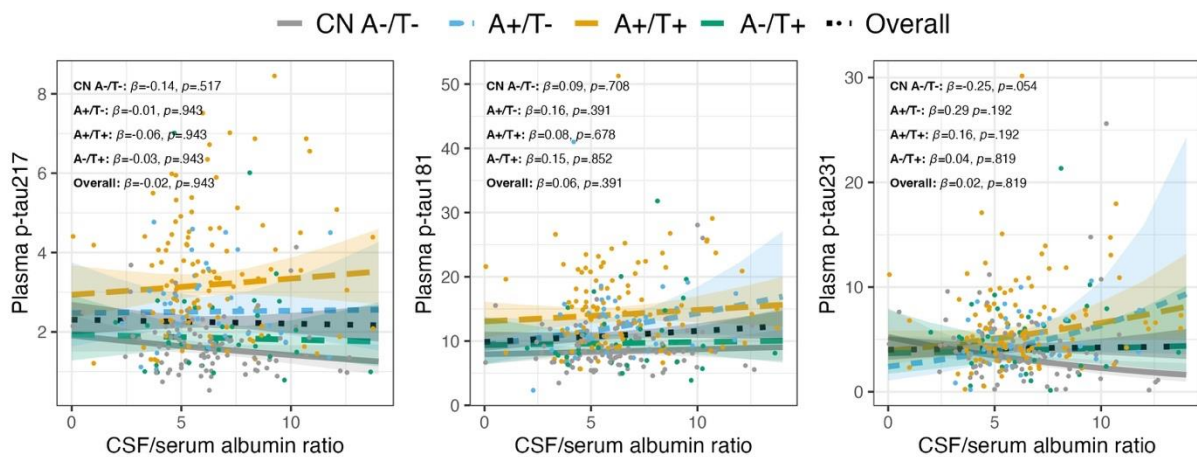


Supplementary figure 4 (S4). Baseline and longitudinal associations of CSF p-tau markers with the Consortium to Establish a Registry for Alzheimer’s Disease (CERAD) memory recall test in cohort-1. Figure S4A-C) show the baseline and longitudinal associations of CSF p-tau217, p-tau181 and p-tau231 with the CERAD memory recall test in Aβ+ individuals. Figure S4D-F) show the baseline and longitudinal associations of CSF p-tau217, p-tau181 and p-tau231 with the CERAD memory recall test in Aβ- individuals. The lines display associations between the biomarker at -1SD (grey), Mean (blue) and +1SD (orange) and the dependent variable at baseline and over time.

Supplementary appendix



Supplementary figure 5 (S5). Plasma P-tau181 and P-tau231 concentrations by cognitive status in cohort 1. Boxplots showing concentrations of plasma p-tau181 and p-tau231 (pg/ml) in Cognitively normal (CN) A β -, CN A β + and Mild Cognitive Impairment (MCI) A β + individuals in Dementia Disease Initiation (cohort1). The brackets show statistically significant differences between the groups (FDR adjusted p-values).



Supplementary figure 6 (S6). Associations between CSF/serum albumin ratio and plasma p-tau epitopes in cohort 1. Shows the non-significant associations between CSF/serum albumin ratios for CN A-/T- controls, all pathological A/T groups as well as the overall slope (all groups).

References

1. Albert, M. S. *et al.* The diagnosis of mild cognitive impairment due to Alzheimer's disease: recommendations from the National Institute on Aging-Alzheimer's Association workgroups on diagnostic guidelines for Alzheimer's disease. *Alzheimers Dement* **7**, 270–279 (2011).
2. Jessen, F. *et al.* A conceptual framework for research on subjective cognitive decline in preclinical Alzheimer's disease. *Alzheimers Dement* **10**, 844–852 (2014).
3. Nordengen, K. *et al.* Longitudinal cerebrospinal fluid measurements show glial hypo- and hyperactivation in predementia Alzheimer's disease. *J Neuroinflammation* **20**, 298 (2023).
4. Bondi, M. W., Delano-Wood, L., Edmonds, E. C., Galasko, D. R. & Salmon, D. P. Subjective Cognitive Complaints Contribute to Misdiagnosis of Mild Cognitive Impairment. *Journal of the International Neuropsychological Society* **20**, 836–847 (2014).
5. Kirsebom, B.-E. *et al.* Demographically adjusted CERAD wordlist test norms in a Norwegian sample from 40 to 80 years. *Clin Neuropsychol* **33**, 27–39 (2019).
6. Lorentzen, I. M. *et al.* Regression-based norms for the FAS phonemic fluency test for ages 40-84 based on a Norwegian sample. *Appl Neuropsychol Adult* **30**, 159–168 (2023).
7. Eliassen, I. V. *et al.* Predictive and diagnostic utility of brief neuropsychological assessment in detecting Alzheimer's pathology and progression to dementia. *Neuropsychology* **34**, 851–861 (2020).
8. Robin, X. *et al.* pROC: an open-source package for R and S+ to analyze and compare ROC curves. *BMC Bioinformatics* **12**, 77 (2011).
9. Wickham, H. *Ggplot2: Elegant Graphics for Data Analysis*. (Springer-Verlag New York, 2016).
10. Kassambara, A. *Ggpubr: 'ggplot2' Based Publication Ready Plots*. (2023).
11. Bates, D., Mächler, M., Bolker, B. & Walker, S. Fitting Linear Mixed-Effects Models Using lme4. *Journal of Statistical Software* **67**, 1–48 (2015).
12. Kuznetsova, A., Brockhoff, P. B. & Christensen, R. H. B. lmerTest Package: Tests in Linear Mixed Effects Models. *Journal of Statistical Software* **82**, 1–26 (2017).
13. Lüdtke, D. ggeffects: Tidy Data Frames of Marginal Effects from Regression Models. *Journal of Open Source Software* **3**, 772 (2018).
14. Lenth, R. V. *Emmeans: Estimated Marginal Means, Aka Least-Squares Means*. (2023).