

## **Blood p-tau association with cognitive status and future memory decline in early Alzheimer's disease**

**Authors:** Fernando Gonzalez-Ortiz, MD, MSc<sup>1,2\*</sup>; Bjørn-Eivind Kirsebom, PhD<sup>3,4,5\*</sup>; Yara Yakoub, MSc<sup>6</sup>; Julia K. Gundersen, MD, PhD<sup>5,7</sup>; Lene Pålhaugen, MD<sup>5,8</sup>; Knut Waterloo, PhD<sup>3,4</sup>; Per Selnes, MD, PhD<sup>5,8</sup>; Jonas Alexander Jarholm, MD<sup>5,8</sup>; Berglind Gísladóttir, MSc<sup>5</sup>; Arvid Rongve, MD, PhD<sup>9,10</sup>; Ragnhild Eide Skogseth, MD, PhD<sup>11,12</sup>; Geir Bråthen, MD, PhD<sup>13,14</sup>; Dag Aarsland, MD, PhD<sup>15,16</sup>; Michael Turton, PhD<sup>17</sup>; Peter Harrison, MA<sup>17</sup>; Henrik Zetterberg, MD, PhD<sup>1,2,18,19,20,21</sup>; Sylvia Villeneuve, PhD<sup>6</sup>; PREVENT AD research group<sup>6</sup>; Tormod Fladby, MD, PhD<sup>5,8†</sup>; Kaj Blennow, MD, PhD<sup>1,2,22,23†</sup>

- 1.- Inst. of Neuroscience and Physiology, University of Gothenburg, Mölndal, Sweden
- 2.- Clinical Neurochemistry Lab, Sahlgrenska University Hospital, Mölndal, Sweden
- 3.- Department of Neurology, University Hospital of North Norway, Tromsø, Norway
- 4.- Department of Psychology, Faculty of Health Sciences, The Arctic University of Norway, Tromsø, Norway
- 5.- Department of Neurology, Akershus University Hospital, Lørenskog, Norway
- 6.-Douglas Mental Health University Institute, Centre for Studies on the Prevention of Alzheimer's Disease (StoP-AD), Montreal, Quebec, Canada
- 7.- Division of Physiology, Institute of Basic Medical Sciences, University of Oslo, Oslo, Norway
- 8.- University of Oslo, Institute for Clinical Medicine, Campus Ahus
9. Department of Neuropsychology, Haugesund Hospital, Haugesund, Norway
10. Department of Clinical Medicine (K1), University of Bergen, Bergen, Norway
11. Department of Geriatric Medicine, Haralds plass Deaconess Hospital, Bergen, Norway.
12. Department of Clinical Sciences, Faculty of Medicine, University of Bergen, Norway.
13. Department of Neurology and Clinical Neurophysiology, University Hospital of Trondheim, Trondheim, Norway
14. Department of Neuromedicine and Movement Science, Faculty of Medicine and Health Sciences, Norwegian University of Science and Technology, Trondheim, Norway
- 15.- Centre for Age-Related Diseases. Stavanger University Hospital Stavanger, Norway
- 16.- Department of Old Age Psychiatry. Institute of psychiatry, Psychology and Neuroscience King's College London, London, UK.
- 17.- Bioventix Plc, 7 Romans Business Park, East Street, Farnham, Surrey GU9 7SX, UK

**NOTE:** This preprint reports new research that has not been certified by peer review and should not be used to guide clinical practice.

18.- Department of Neurodegenerative Disease, UCL Institute of Neurology, Queen Square, London, UK

19.- UK Dementia Research Institute at UCL, London, UK

20.- Hong Kong Center for Neurodegenerative Diseases, Clear Water Bay, Hong Kong, China

21.- Wisconsin Alzheimer's Disease Research Center, University of Wisconsin School of Medicine and Public Health, University of Wisconsin-Madison, Madison, WI, USA

22.- Paris Brain Institute, ICM, Pitié-Salpêtrière Hospital, Sorbonne University, Paris, France

23.- Neurodegenerative Disorder Research Center, Division of Life Sciences and Medicine, and Department of Neurology, Institute on Aging and Brain Disorders, University of Science and Technology of China and First Affiliated Hospital of USTC, Hefei, P.R. China

\*Joint first authors

†Joint senior authors

### **Correspondence:**

Fernando Gonzalez-Ortiz, Clinical Neurochemistry Lab House V3, floor 2 Mölndal Hospital  
Street Address: Biskopsbogatan 27 SE-43180 Mölndal, Sweden. Email: [fernando.gonzalez.ortiz@gu.se](mailto:fernando.gonzalez.ortiz@gu.se)

Bjørn-Eivind Kirsebom, Neurology department, University Hospital of North Norway Hansine Hansens veg 67, 9019 Tromsø, Norway. Email: [bjorneivind.kirsebom@gmail.com](mailto:bjorneivind.kirsebom@gmail.com)

**Key words:** Predementia, CSF, Plasma, PET, Amyloid, Tau

### **Total word count:**

Key Points: 100/100

Abstract: 349/350

Manuscript: 2987/3000

## Key points

**Question:** Do levels of plasma p-tau markers reflect cognitive performance in preclinical and prodromal Alzheimer's disease (AD)?

**Findings:** In two independent cohorts (n=619) we observed that among AD participants, higher plasma p-tau217, but not p-tau181 or p-tau231, was significantly associated with worse cognitive performance. Furthermore, plasma p-tau217 was the only blood p-tau marker associated with future cognitive decline in prodementia AD.

**Meaning:** Plasma p-tau217 detects early AD pathology, determined either by CSF A $\beta$ 42/40 ratio or A $\beta$  positron emission tomography, and beyond its diagnostic capabilities, p-tau217 levels are linked to clinical severity and future cognitive deterioration in preclinical and prodromal AD.

## Abstract

**Importance:** Detecting early Alzheimer's disease (AD) biological and clinical changes is crucial for early diagnostic and therapeutic interventions.

**Objective:** To explore the associations between plasma p-tau biomarkers, cognitive- and biological profiles in predementia AD.

**Design, Setting, and Participants:** In this study (n=619), we examined two independent cohorts consisting of preclinical and prodromal AD. Cohort-1 included 431 participants classified as either cognitively normal (CN) or mild cognitive impaired (MCI) with normal or abnormal cerebrospinal fluid (CSF) A $\beta$ 42/40 ratio (A) and p-tau181 (T) [CN A-/T-, n=169; A+/T-, CN=26; MCI=24; A+/T+, CN=40; MCI=105; CN=34; MCI=33]. A total of n=418 of the participants had longitudinal assessments of verbal memory up to 9.67 years from baseline. Cohort-2 included 190 participants in whom amyloid status was determined using A $\beta$  positron emission tomography (PET) [A $\beta$ - CN= 118; A $\beta$ + CN= 49; A $\beta$ + MCI= 21].

**Exposure:** CSF and plasma p-tau181, p-tau217 and p-tau231.

**Main Outcomes and Results:** In cohort-1, plasma p-tau217 showed a moderate correlation with its corresponding CSF biomarker ( $\rho=0.65$ ,  $p<.001$ ) and high accuracy identifying A $\beta$ + participants (AUC: 0.85). Diagnostic accuracy of plasma p-tau217 was significantly greater for MCI A $\beta$ + (AUC: 0.89) versus CN A $\beta$ + (AUC: 0.79,  $p<.05$ ) and for A+/T+ (AUC: 0.88) versus A+/T- (AUC: 0.78,  $p<.05$ ). P-tau181 and p-tau231 showed significantly weaker CSF-plasma correlations ( $\rho=0.47$ , and  $\rho=0.32$ ,  $p<.001$ , respectively) and levels were not as tightly associated with cognitive status in the A $\beta$ + group. Moreover, p-tau217 was the only plasma marker that associated with future memory decline ( $\beta=0.05$ ,  $p<.05$ ). Additionally, plasma p-tau217 had the weakest correlation with glomerular filtration rate ( $\rho=-.14$ ,  $p<.05$ ), followed by p-tau181 ( $\rho=-.17$ ,  $p<.01$ ) and p-tau231 ( $\rho=-.22$ ,  $p<.001$ ). In cohort 1 and 2, plasma p-tau217 showed significantly higher concentrations in MCI A $\beta$ + as compared to CN A $\beta$ +. Furthermore, plasma p-tau217 demonstrates similar biomarker elevations when compared to CN A $\beta$ - controls in both cohorts.

**Conclusions:** Our findings show that, unlike p-tau181 and p-tau231, plasma p-tau217 aligns consistently with cognitive status in A $\beta$ + individuals, potentially reducing disagreements between clinical and biochemical findings. Plasma p-tau217 associations with baseline and future cognitive decline make it a valuable complement to clinical evaluation in preclinical and prodromal AD.

## Introduction

Alzheimer's disease (AD) represents the most common cause of dementia in the elderly<sup>1</sup>. However, despite its high prevalence, a clinical diagnosis of AD remains challenging due to its insidious symptomatology, particularly in early stages of the disease<sup>2-4</sup>. While definite diagnosis is based on the neuropathological evidence of the main AD hallmarks,  $\beta$ -amyloid plaques and tau tangles in the brain<sup>1,5</sup>, the use of neuroimaging (positron emission tomography [PET]) and cerebrospinal fluid (CSF) biomarkers that corroborate the presence of these hallmarks has proven to be valuable to support clinical diagnosis<sup>1,6,7</sup>. These pathological changes are often detected in the brain well before any noticeable cognitive change, reflecting the preclinical or prodromal stages<sup>2,8</sup>, which may explain why biologically defined AD is more prevalent than clinically defined AD<sup>9</sup>

Classification or staging of AD pathology can be assessed through biological and cognitive measurements. Biological classification relies on objective markers identified through imaging or CSF analysis (e.g., amyloid PET and CSF amyloid42/40 ratio). These biomarkers provide valuable insights into the disease at the molecular level and categorize patients according to the presence of amyloid and tau pathology<sup>10</sup>. On the other hand, clinical classification of AD involves the assessment of cognitive and functional decline<sup>11</sup>.

In recent years, sensitive techniques for assessing biomarkers in plasma have emerged as accessible methods for detecting and potentially predicting early AD changes<sup>6,12</sup>. Plasma p-tau markers such as p-tau181, p-tau217 and p-tau231 have shown promising performance to identify patients with early amyloid pathology<sup>7,8,12</sup>. Among these markers, p-tau217 has shown a superior accuracy in early stages of the disease continuum, serving as a possible first-in-line diagnostic test<sup>13,14</sup>.

While plasma biomarkers hold great promise for early AD diagnosis and prognosis<sup>15</sup>, they do not consistently align with the stage of cognitive decline<sup>16</sup>. Some individuals with substantial biomarker evidence of AD pathology may exhibit mild clinical symptoms, whereas others with fewer biomarker abnormalities may experience more severe cognitive deficits<sup>3,16</sup>. Moreover, the temporal evolution of AD biomarkers is not linearly correlated with cognitive decline<sup>17,18</sup>. The rate of change in biomarker levels may vary greatly between individuals, and clinical symptoms may worsen rapidly or slowly, making it challenging to predict disease progression accurately<sup>17</sup>. The reasons for this are not completely understood but may relate to the temporal

disconnect between biomarker evidence of pathology build-up and neuronal network breakdown/loss of brain resilience<sup>19</sup>.

In this study, we investigate the value of plasma p-tau181, p-tau217 and p-tau231 beyond their diagnostic capabilities by assessing their associations with cognitive status as well as with future cognitive deterioration in early AD. In addition, we explore the positive predictive value (PPV) and negative predictive value (NPV) of plasma p-tau markers to determine their practical utility and limitations in real-world settings.

## **Methods**

### *Cohort-1: Dementia Disease Initiation (DDI)*

The DDI study is a Norwegian multicentre cohort recruiting participants across all university hospitals in Norway. See Fladby et al. (2017)<sup>20</sup> for details. The DDI cohort includes predementia cases with either Subjective Cognitive Decline (SCD) or MCI staged according to published criteria<sup>21,22</sup> and participants recruited as controls primarily from spouses of recruited patients, and secondarily from advertisements in local news media and also orthopaedic patients who had lumbar punctures due to surgery and reported no experience of subjective cognitive decline. However, as previously applied in the DDI cohort<sup>23</sup>, here we employ an actuarial definition of cognitive normalcy and mild cognitive impairment based on neuropsychological test battery performance (see supplementary methods for details). Inclusion criteria are ages between 40 and 80 years and native language of Norwegian, Swedish, or Danish. The exclusion criteria are intellectual disability or other developmental disorders, brain trauma, stroke, dementia, severe psychiatric conditions, or severe somatic disease that might influence cognitive functions. The DDI protocol comprises extensive medical history, neurological and neuropsychological examinations, lumbar puncture, blood-draw and brain Magnetic resonance imaging (MRI).

### *Cohort-2: Pre-symptomatic Evaluation of Experimental or Novel Treatments for Alzheimer's Disease (PREVENT AD)*

PREVENT AD is a longitudinal observational study consisting of 385 initially cognitively unimpaired older adults with a parental or multiple-sibling history of AD dementia<sup>24</sup>. Participants in the PREVENT-AD study are aged 60 years or older upon entry, or 55 years or older if within 15 years of their relative's symptoms onset. All participants underwent Clinical Dementia Rating (CDR) and Montreal Cognitive assessment (MoCA) assessment upon

enrolment<sup>24</sup>. Annually, these individuals underwent serial neuropsychological evaluation using Repeatable Battery for the Assessment of Neuropsychological Status (RBANS), MRI and blood draw for routine labs. A subsample of participants underwent Positron Emission Tomography (PET) scans of A $\beta$  pathology.

#### *CSF and blood proteomics*

In cohort-1 CSF A $\beta$ 1-42 and CSF A $\beta$ 1-40 concentrations were measured by the QuickPlex SQ 120 system from Meso Scale Discovery (MSD, MD, USA). The A $\beta$ 42/40 ratio was used to determine A $\beta$  plaque pathology (cut-off  $\leq 0.077$ )<sup>25</sup>. CSF samples included prior to October 2020 used commercial enzyme-linked immunosorbent assays (ELISAs) from Innostest, Fujirebio, Ghent, Belgium based on monoclonal antibodies to determine CSF phosphorylated tau (p-tau181) concentration. Due to a change in laboratory equipment, CSF samples included after October 2020 used Elecsys p-tau181 kits (n=421 were determined with Innostest ( $>65$  pg/mL); n=10 determined with Elecsys ( $>19$  pg/mL))<sup>23</sup>.

All the p-tau markers in cohort 1 and 2 were measured on the Simoa HD-X platform with one in thirty dilution factor in CSF and two fold factor in plasma. Plasma p-tau181 was measured according to the Karikari et al. method<sup>7</sup>, plasma p-tau231 by the published method by Ashton et al.<sup>26</sup>. Plasma UGOT p-tau217 Gonzalez-Ortiz et al. method<sup>27</sup>. Signal variations within and between analytical runs were assessed using three internal quality control samples at the beginning and the end of each run.

#### *A $\beta$ -PET*

In cohort-2 A $\beta$ -[18F NAV4694] PET scans were performed at the McConnell Brain Imaging Centre at the Montreal Neurological Institute (MNI). A $\beta$ -PET scans were obtained 40–70 minutes after injection (220 MBq). The images were reconstructed using a three-dimensional (3D) ordinary Poisson ordered subset expectation maximum ([OP-OSEM] algorithm with 10 iterations and 16 subsets<sup>28</sup>. The data was pre-processed by our in-house protocol that is available on (<https://github.com/villeneuve/vlpp>). Standardized uptake value ratios (SUVRs) were calculated for each region of the Desikan-Killaney atlas by dividing the tracer uptake in the cerebellar grey matter for A $\beta$ -PET scans. A global amyloid index SUVR threshold of 1.27, equivalent to CL = 18, was selected for A $\beta$ -PET positivity.

### *Study design*

Cohort-1 included cases and controls (n=431) according to the following criteria: 1) Cognitively normal (controls or SCD) with normal CSF A $\beta$ 42/40 ratio and normal p-tau181 biomarkers (CN A-/T-, n=169). 2) CN or MCI participants with pathological A $\beta$ 42/40 ratio, but normal p-tau181 (All A+/T-, n=50; CN=26; MCI=24). 3) pathological A $\beta$ 42/40 ratio and p-tau181 (All A+/T+, n=145; CN=40; MCI=105) and normal A $\beta$ 42/40 ratio but pathological and p-tau181 (All A-/T+, n=67; CN=34; MCI=33). Details of available markers for each group are detailed in table 1 & 2. Subsamples had available glomerular filtration rate (GFR) as a kidney function test (n=335), and CSF/serum albumin ratio as a blood-brain barrier (BBB) marker (n=277). Of the 431 included cases, n=418 (A $\beta$ -, n=227; A $\beta$ +, n=191) had available longitudinal CERAD word list verbal memory recall<sup>29</sup> assessments up to 9.67 years from baseline (Mean=3.55, SD=1.87, range =0.52 – 9.67). See table S1 for details. Cohort-2 cases and controls (n=190) in whom amyloid status was determined using A $\beta$  PET and were classified as A $\beta$ - CN= 119; A $\beta$ + CN= 49; A $\beta$ + MCI= 21. See table S2 for details.

### *Statistics*

All analyses were performed in Rstudio (R version 4.3.2). Between-group differences in A/T groups in both cohorts (and CN/MCI A $\beta$ -/A $\beta$ + for between cohort comparisons) for continuous variables (age, GFR and log-transformed CSF/Plasma p-tau biomarker concentrations) were assessed with one-way ANOVA and post-hoc comparisons performed with false discovery rate (FDR) adjustments. Categorical variables (sex, diagnoses, and *APOE* genotype) were assessed with chi-square tests. A sub analysis of the biomarker differences between CN and MCI cases within the pathological A/T groups were assessed with independent sample t-tests. Spearman's rho correlations were performed between CSF and plasma p-tau epitopes in both the complete sample, and within A/T groups. Fisher z-transformation was used to compare the correlation coefficients. Mean fold changes in both CSF and plasma biomarkers were computed for CN and MCI pathological A/T groups with the mean biomarker concentrations for the CN A-/T- group (CN A $\beta$ - for between cohort comparisons) as the reference. Receiver Operating Curve (ROC) analyses were performed for cognitive (CN A- vs CN A+ and MCI A+) and biological status (CN A-/T- vs A+/T- and A+/T+) and compared with Delong's test. Cut-offs for each model were generated using the Youden index, and NPVs and PPVs were computed accordingly. Linear Mixed Models were fitted to assess associations between baseline p-tau epitopes in CSF/Plasma and future memory decline (CERAD word list recall substest<sup>29</sup>) for A- (A-/T- & A+/T-) and A+ (A+/T- & A+/T+)



separately. Spearman's rho correlations between the plasma biomarkers and GFR were performed in the complete sample. Linear regression models with log-transformed plasma biomarker as dependent variable and CSF/serum albumin ratio as the dependent variable were fitted. Interaction terms with the A/T group was included in separate models. Overall slope and slope per group were computed, and p-values were adjusted using FDR. See supplementary methods for additional details.

## Results

### Agreements between CSF and plasma p-tau biomarkers.

In cohort-1, we observed a moderate correlation between CSF and plasma p-tau217 ( $\rho=.65$ ,  $p<.001$ , figure 1A), and significantly weaker correlations for p-tau181 ( $z= 3.83$ ,  $p<.001$ ,  $\rho=.47$ ,  $p<.001$ , figure 1B) and p-tau231 ( $z= 6.38$ ,  $p<.001$ ,  $\rho=.31$ ,  $p<.001$ , figure 1C). Split by A/T groups, p-tau217 correlations (figure 1D) were similar in both A+/T- ( $\rho=.49$ ,  $p<.001$ ) and A+/T+ ( $\rho=.48$ ,  $p<.001$ ) groups. Weaker correlations were seen in the CN A-/T- and A/T groups (both  $\rho=.24$ ,  $p<.01$ ;  $p=.056$ ). For both p-tau181 (figure 1E) and p-tau231 (figure 1F), correlations were weaker in all groups as compared to p-tau217 ( $\rho$ 's between 0.14 and .28). Here, both p-tau181 and p-tau231 showed more robust correlations in the A+/T+ group (both  $\rho=0.27$ ,  $p<.001$ ).

### Diagnostic performance based on cognitive status versus biological status.

Regardless of cognitive status, in cohort-1 plasma p-tau217 demonstrated the highest AUC to detect A $\beta$  pathology (.850), followed by p-tau181 (.797) and p-tau231 (.661). However, only p-tau217 showed a significant increase in accuracy for MCI A+ (.886) compared to CN A+ (.786,  $p<.05$ ) as well as A+/T- (.778) compared to A+/T+ (.876) ( $p<.05$ ). See figure 2 and table S3A for details. Moreover, plasma p-tau217 demonstrated PPVs and NPVs above .800 for both MCI A+ and A+/T+ versus A-/T- controls, but poor PPVs for CN A+ and A+/T- (.656 & .458 respectively) See table S4A and figure S1 for details on all markers. In CSF, p-tau217 also showed the highest accuracy for A $\beta$  pathology (.973) followed by p-tau231 (.961) and p-tau181 (.906). Here, all epitopes had higher accuracies for A+/T+ as compared to A+/T- (between  $p<.01$  and  $p<.001$ ). But only CSF p-tau231 differentiated between CN (.942) and MCI A+ (.970) ( $p<.05$ ). See figure S2, tables S3B and S4A for details.

### **Between-group differences in CSF and plasma p-tau and prediction of memory decline**

In CSF, p-tau217 and p-tau231 were higher in all pathological A/T groups (all  $p < .001$ ), whereas p-tau181 was higher only in the A+/T+ and A-/T+ groups (both  $p < .001$ ) See table 1 for details. When splitting by cognitive status, only plasma p-tau217 was higher in MCI A+/T+ compared to CN A+/T+ ( $p < .05$ ), whereas only CSF p-tau217 and p-tau231 had higher concentrations in MCI A+/T+ compared to CN A+/T+ ( $p < .001$ ) (see table S5). Mean fold change (with CN A-/T- as the reference) in biomarker concentrations corresponded to the between-group differences outlined above, notably demonstrating generally a larger mean fold change for both plasma and CSF p-tau217 in the A+ groups as compared to the other p-tau epitopes, and also a higher mean fold change plasma p-tau 217 in MCI as compared to CN A+/T+ (see figure S3). Moreover, plasma p-tau217, but not p-tau181 or p-tau231, showed significant associations with both baseline ( $\beta = -0.32$ ,  $p < .001$ ) and future verbal memory decline ( $\beta = -0.05$ ,  $p < .05$ ) in A $\beta$ + but not in A $\beta$ - cases (figure 3 and table S1). In CSF all p-tau epitopes associated with memory impairment and decline in A $\beta$ +, however p-tau217 showed the strongest associations over time ( $\beta = -0.06$ ,  $p < .05$ ). P-tau181 was the only CSF p-tau marker to associate with future memory decline in the A $\beta$ - cases ( $\beta = -0.04$ ,  $p < .01$ ) (see figure S4 and table S1 for details).

### **Changes in plasma biomarkers according to cognitive status**

In cohort 1 and 2, we compared plasma p-tau217 concentrations between the CN A $\beta$ + (cohort 1:  $n = 66$ ; cohort 2:  $n = 49$ ) and MCI A $\beta$ + (cohort 1:  $n = 127$ ; cohort 2:  $n = 21$ ) groups to CN A $\beta$ - (cohort 1:  $n = 161$ ; Cohort 2:  $n = 118$ ). In both cohorts, we found significantly higher p-tau217 concentrations in the MCI A $\beta$ + cases as compared to CN A $\beta$ + (both cohorts  $p < .001$ , see figure 4A&B). In cohort 1, we also compared plasma p-tau181 and p-tau231 between groups but found no difference in concentrations between CN A $\beta$ + and MCI A $\beta$ + cases (both n.s., see figure S5). Moreover, mean fold changes in p-tau217 for the A $\beta$ + groups (compared to CN A $\beta$ -) were remarkably similar in both cohorts (figure 4C). Thus, replicating between independent cohorts that plasma p-tau217 is sensitive to cognitive severity in predementia AD regardless of the method used to determine A $\beta$  positivity. Results of plasma p-tau181 and p-tau231 in cohort-2 have previously been reported<sup>28</sup>.

### **Biomarker correlations with glomerular function and blood-brain barrier permeability**

In cohort-1 plasma p-tau217 showed the weakest correlation with GFR ( $\rho=-14$ ,  $p<.05$ ), followed by p-tau181 ( $\rho=-17$ ,  $p<.01$ ) and p-tau231 ( $\rho=-22$ ,  $p<.001$ ). As expected, no associations between GFR and CSF p-tau epitopes were found. No differences in GFR between the A/T groups were observed (Table 1). We used the CSF/serum albumin ratio as a proxy to evaluate BBB permeability. No significant associations between any plasma biomarker and CSF/serum albumin ratio were observed (see figure S6).

### **Discussion**

The superior performance of plasma p-tau217 over p-tau181 and p-tau231 at detecting early AD biochemical signatures and its sensitivity to capture cognitive changes might be attributed to its unique properties observed in-vitro models, such as promoting synaptic decline and the formation of tau-tau interactions at the expense of tau binding to microtubules<sup>30</sup>.

In cohort-1, when we divided A $\beta$ <sup>+</sup> participants according to their cognitive status (CN A $\beta$ <sup>+</sup> and MCI A $\beta$ <sup>+</sup>) plasma p-tau217 showed significant increases in the MCI A $\beta$ <sup>+</sup> group compared with CN A $\beta$ <sup>+</sup> group while plasma p-tau181 and p-tau231 did not show any difference between these groups. We replicated these results in cohort-2, in which AD pathology was determined by A $\beta$ -PET, where again levels of plasma p-tau217, but not p-tau181 or p-tau231, were associated to worse cognitive performance in A $\beta$ <sup>+</sup> participants. Moreover, mean fold change in biomarker concentrations compared to the control group were remarkably similar in the CN A $\beta$ <sup>+</sup> and MCI A $\beta$ <sup>+</sup> groups for both cohorts (Figure 4).

When dividing A $\beta$ <sup>+</sup> participants in cohort-1 according to their CSF profiles (A+/T- and A+/T+), we observed that in the A+/T- group none of the CSF or plasma biomarkers could differentiate between CN and MCI individuals. On the other hand, all the CSF p-tau markers and plasma p-tau217, but not p-tau181 or p-tau231, were capable of distinguishing between CN and MCI in the A+/T+ group. These findings suggest that while cognitive deterioration might impact the levels of plasma p-tau217 in A $\beta$ <sup>+</sup> individuals, it is likely that the joint pathology (A+/T+) is the main driver of significant increases in plasma p-tau217.

When comparing the performance of CSF versus plasma p-tau217 in cohort-1, we observe that even with less pronounced elevation in biomarker concentrations compared to controls, plasma p-tau217 was able to accurately identify A $\beta$ <sup>+</sup> participants. Furthermore, when we assessed the

PPV and NPV of plasma p-tau markers, plasma p-tau217 showed a superior performance identifying true positive (TP) and true negative (TN) participants when compared with p-tau181 and p-tau231 (figure S1 and table S4A). However, all the plasma p-tau markers showed a poor performance identifying TP participants in the CN A+ and in the A+/T- groups. Our results suggest that the optimal diagnostic performance of plasma p-tau217, based on PPV and NPV, is achieved in the A $\beta$ + MCI participants and in those with an A+/T+ profile in CSF regardless of the cognitive status. These findings are particularly relevant for real-world settings, where relying solely on a single measurement of plasma p-tau217 might lead to misdiagnosis, if this is not taken in consideration.

Importantly, the association with future verbal memory decline were similar for plasma and CSF p-tau217 (Figure 3 and figure S4), underscoring the prognostic value of this marker. Furthermore, in cohort-1 we observed that plasma p-tau217 levels were less affected by kidney function when compared to p-tau181 and p-tau231, suggesting a higher robustness. Additionally, none of the plasma markers showed significant associations with the CSF/serum albumin ratio suggesting that BBB integrity does not significantly influence the performance of these markers in blood. These findings, in addition to the CSF-plasma correlations observed in cohort-1, might suggest that while in CSF the three p-tau markers are equally reliable for detecting AD-related pathology, in blood, potential peripheral contribution of p-tau181 and p-tau231 could affect the diagnostic and prognostic performance of these markers while plasma p-tau217 seems to be less affected by peripheral factors and a more accurate reflection of AD pathology.

## **Conclusion**

Levels of plasma p-tau217 align consistently with biological and clinical changes observed in AD and can provide valuable information about the course of the disease even in early stages, namely preclinical and prodromal AD. While p-tau181 and p-tau231 have been valuable in the context of AD research, studies like ours underscore the unique diagnostic and prognostic potential of plasma p-tau217. Moreover, our results address the potential limitations on the use of plasma p-tau217 based on its PPV and NPV while also acknowledging that, due to its minimally invasive nature and accessibility, plasma p-tau217 makes an excellent alternative for screening and routine clinical assessments when CSF analysis or PET are not available. Integrating plasma p-tau217 into clinical practice holds promise not only for improving AD diagnosis but also to facilitate early interventions in patients at risk of cognitive decline.

## **Strengths and Limitations**

The main strengths of our study include the inclusion of two independent cohorts with extensive neuroimaging and biomarker characterization of patients in preclinical and prodromal AD. The main limitation of this study was the lack of longitudinal blood sampling and the low racial and ethnical diversity of our population.

## **Author Contributions:**

Kirsebom had full access to all the data from cohort 1 in the study and takes responsibility for the integrity of the data and the accuracy of the data analysis. Yakoub had full access to the data from cohort 2 and takes responsibility for the integrity of the data and the accuracy of the data analysis.

Concept and design: Gonzalez-Ortiz, Kirsebom, Fladby and Blennow

Acquisition, analysis, or interpretation of data: Gonzalez-Ortiz, Kirsebom, Yakoub, Gundersen and Gísladóttir.

Drafting of the manuscript: Gonzalez-Ortiz and Kirsebom.

Critical revision of the manuscript for important intellectual content: Gonzalez-Ortiz, Kirsebom, Pålhaugen, Waterloo, Selnes, Jarnholm, Rongve, Skogseth, Bråthen, Aarsland, Turton, Harrison, Zetterberg and Villeneuve.

Statistical analysis: Kirsebom and Yakoub.

Supervision: Fladby and Blennow.

## **Data sharing**

Anonymized aggregated level data will be shared by request from a qualified academic investigator for the sole purpose of replicating procedures and results presented in the article, and as long as data transfer is in agreement with EU legislation on the general data protection regulation and decisions by the Ethical Review Boards in charge of each of the cohorts used for this study.

## **Conflict of interest:**

KB has served as a consultant and at advisory boards for Acumen, ALZPath, AriBio, BioArctic, Biogen, Eisai, Lilly, Moleac Pte. Ltd, Novartis, Ono Pharma, Prothena, Roche Diagnostics, and Siemens Healthineers; has served at data monitoring committees for Julius Clinical and Novartis; has given lectures, produced educational materials and participated in educational programs for AC Immune, Biogen, Celdara Medical, Eisai and Roche Diagnostics; and is a co-

founder of Brain Biomarker Solutions in Gothenburg AB (BBS), which is a part of the GU Ventures Incubator Program, outside the work presented in this paper. HZ has served at scientific advisory boards and/or as a consultant for Abbvie, Acumen, Alector, Alzinova, ALZPath, Amylyx, Annexon, Apellis, Artery Therapeutics, AZTherapies, Cognito Therapeutics, CogRx, Denali, Eisai, Merry Life, Nervgen, Novo Nordisk, Optoceutics, Passage Bio, Pinteon Therapeutics, Prothena, Red Abbey Labs, reMYND, Roche, Samumed, Siemens Healthineers, Triplet Therapeutics, and Wave, has given lectures in symposia sponsored by Alzecure, Biogen, Celectricon, Fujirebio, Lilly, Novo Nordisk, and Roche, and is a co-founder of Brain Biomarker Solutions in Gothenburg AB (BBS), which is a part of the GU Ventures Incubator Program (outside submitted work). BEK has served as a consultant for Biogen and advisory board for Eisai. TF has served as a consultant and at the advisory boards for Biogen, Eisai, Novo Nordisk, Eli Lilly and Roche. RES has served on an advisory board for Eisai.

### **Funding:**

The project was funded by the Norwegian Research Council, JPND/PMI-AD (NRC 311993). KB is supported by the Swedish Research Council (#2017-00915 and #2022-00732), the Swedish Alzheimer Foundation (#AF-930351, #AF-939721 and #AF-968270), Hjärnfonden, Sweden (#FO2017-0243 and #ALZ2022-0006), the Swedish state under the agreement between the Swedish government and the County Councils, the ALF-agreement (#ALFGBG-715986 and #ALFGBG-965240), the European Union Joint Program for Neurodegenerative Disorders (JPND2019-466-236), the Alzheimer's Association 2021 Zenith Award (ZEN-21-848495), the Alzheimer's Association 2022-2025 Grant (SG-23-1038904 QC), and the Kirsten and Freddy Johansen Foundation. HZ is a Wallenberg Scholar and a Distinguished Professor at the Swedish Research Council supported by grants from the Swedish Research Council (#2023-00356; #2022-01018 and #2019-02397), the European Union's Horizon Europe research and innovation programme under grant agreement No 101053962, Swedish State Support for Clinical Research (#ALFGBG-71320), the Alzheimer Drug Discovery Foundation (ADDF), USA (#201809-2016862), the AD Strategic Fund and the Alzheimer's Association (#ADSF-21-831376-C, #ADSF-21-831381-C, #ADSF-21-831377-C, and #ADSF-24-1284328-C), the Bluefield Project, Cure Alzheimer's Fund, the Olav Thon Foundation, the Erling-Persson Family Foundation, Stiftelsen för Gamla Tjänarinnor, Hjärnfonden, Sweden (#FO2022-0270), the European Union's Horizon 2020 research and innovation programme under the Marie Skłodowska-Curie grant agreement No 860197 (MIRIADE), the European

Union Joint Programme – Neurodegenerative Disease Research (JPND2021-00694), the National Institute for Health and Care Research University College London Hospitals Biomedical Research Centre, and the UK Dementia Research Institute at UCL (UKDRI-1003). BEK was supported by a grant from Helse-Nord (HNF1540-20).

PREVENT-AD was launched in 2011 as a \$13.5 million, 7-year public-private partnership using funds provided by McGill University, the Fonds de Recherche du Québec – Santé (FRQ-S), an unrestricted research grant from Pfizer Canada, the J.L. Levesque Foundation, the Lemaire Foundation, the Douglas Hospital Research Centre and Foundation, the Government of Canada, and the Canada Fund for Innovation. The PREVENT-AD was additionally supported by the Canadian Institute of Health Research (CIHR) (#438655), the Fonds de recherche du Québec en Santé (FRQS) and Brain Canada grants.

## References

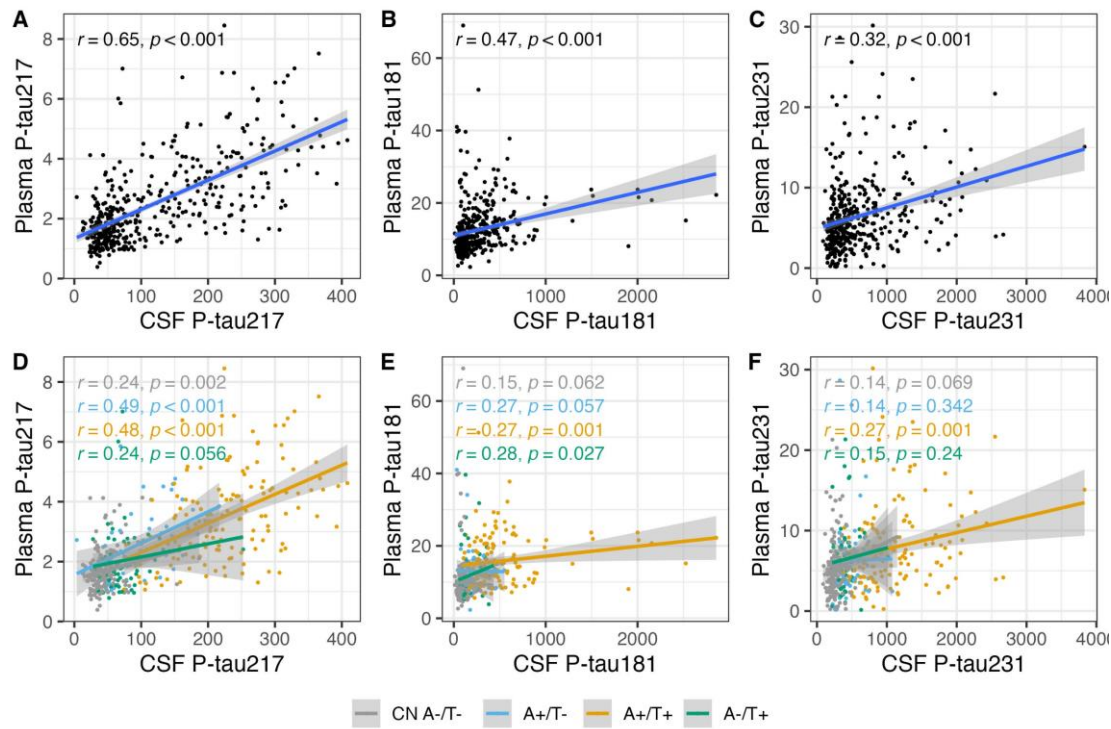
1. Gonzalez-Ortiz F, Kac PR, Brum WS, Zetterberg H, Blennow K, Karikari TK. Plasma phospho-tau in Alzheimer's disease: towards diagnostic and therapeutic trial applications. *Molecular Neurodegeneration*. 2023;18(1):18. doi:10.1186/s13024-023-00605-8
2. Dubois B. Preclinical Alzheimer's disease: Definition, natural history, and diagnostic criteria. *Alzheimers Dement*. Published online 2016.
3. Keshavan A, Pannee J, Karikari TK, et al. Population-based blood screening for preclinical Alzheimer's disease in a British birth cohort at age 70. *Brain*. 2021;144(2):434-449. doi:10.1093/brain/awaa403
4. Mormino EC, Papp KV, Rentz DM, et al. Early and late change on the preclinical Alzheimer's cognitive composite in clinically normal older individuals with elevated amyloid  $\beta$ . *Alzheimers Dement*. 2017;13(9):1004-1012. doi:10.1016/j.jalz.2017.01.018
5. Hubbard B. A quantitative histological study of early clinical and preclinical Alzheimer's disease. *Neuropathol Appl Neurobiol*. Published online 1990.
6. Benedet AL, Brum WS, Hansson O, et al. The accuracy and robustness of plasma biomarker models for amyloid PET positivity. *Alzheimer's Research & Therapy*. 2022;14(1):26. doi:10.1186/s13195-021-00942-0
7. Karikari TK, Pascoal TA, Ashton NJ, et al. Blood phosphorylated tau 181 as a biomarker for Alzheimer's disease: a diagnostic performance and prediction modelling study using data from four prospective cohorts. *The Lancet Neurology*. 2020;19(5):422-433. doi:10.1016/S1474-4422(20)30071-5
8. Milà-Alomà M, Ashton NJ, Shekari M, et al. Plasma p-tau231 and p-tau217 as state markers of amyloid- $\beta$  pathology in preclinical Alzheimer's disease. *Nat Med*. 2022;28(9):1797-1801. doi:10.1038/s41591-022-01925-w
9. Jack CR Jr, Therneau TM, Weigand SD, et al. Prevalence of Biologically vs Clinically Defined Alzheimer Spectrum Entities Using the National Institute on Aging–Alzheimer's Association Research Framework. *JAMA Neurology*. 2019;76(10):1174-1183. doi:10.1001/jamaneurol.2019.1971
10. Jack CR, Bennett DA, Blennow K, et al. A/T/N: An unbiased descriptive classification scheme for Alzheimer disease biomarkers. *Neurology*. 2016;87(5):539-547. doi:10.1212/WNL.0000000000002923
11. Curriel Cid RE, Matias-Guiu JA, Loewenstein DA. A review of novel Cognitive Challenge Tests for the assessment of preclinical Alzheimer's disease. *Neuropsychology*. 2023;37(6):661-672. doi:10.1037/neu0000883
12. Ashton NJ, Puig-Pi Joan A, Milà-Alomà M, et al. Plasma and CSF biomarkers in a memory clinic: Head-to-head comparison of phosphorylated tau immunoassays. *Alzheimer's & Dementia*. 2023;19(5):1913-1924. doi:10.1002/alz.12841
13. Jonaitis EM, Janelidze S, Cody KA, et al. Plasma phosphorylated tau 217 in preclinical Alzheimer's disease. *Brain Commun*. 2023;5(2):fcad057. doi:10.1093/braincomms/fcad057



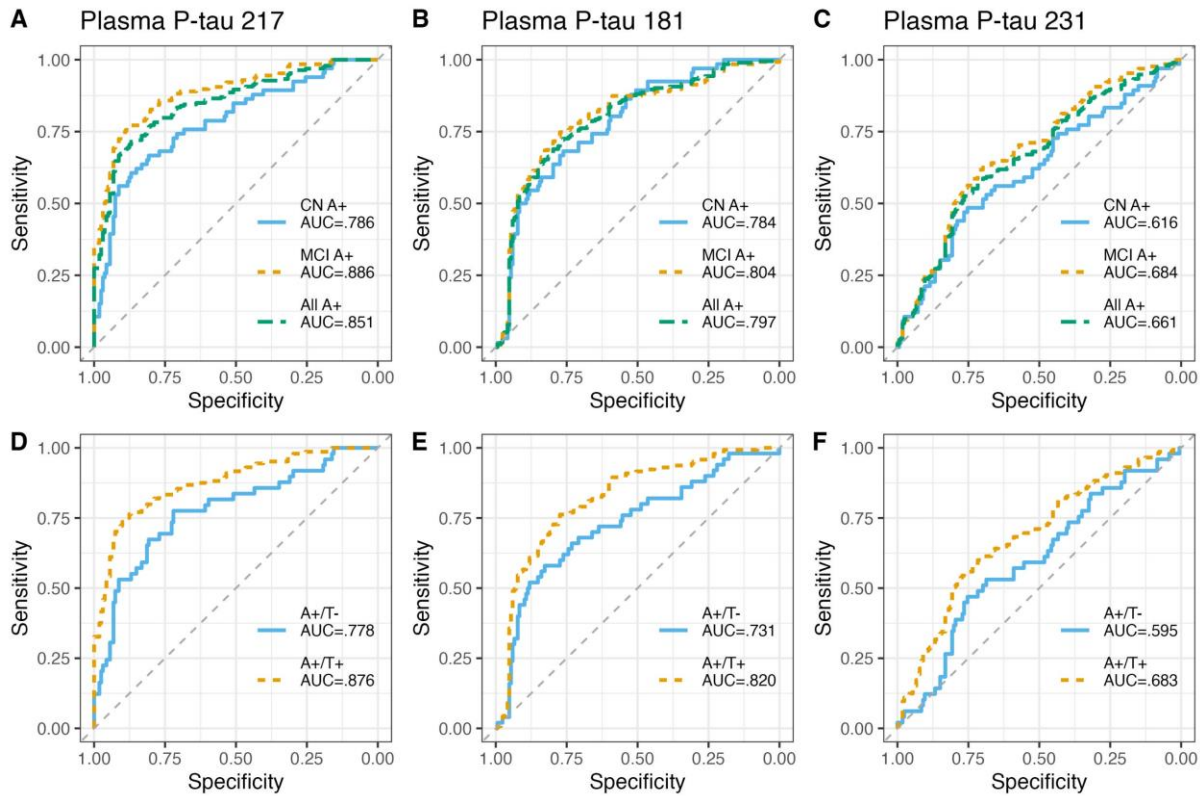
14. Palmqvist S. Discriminative Accuracy of Plasma Phospho-tau217 for Alzheimer Disease vs Other Neurodegenerative Disorders. *JAMA*. Published online 2020.
15. Groot C, Cicognola C, Bali D, et al. Diagnostic and prognostic performance to detect Alzheimer's disease and clinical progression of a novel assay for plasma p-tau217. *Alzheimers Res Ther*. 2022;14(1):67. doi:10.1186/s13195-022-01005-8
16. Dolci GAM, Damanti S, Scortichini V, et al. Alzheimer's Disease Diagnosis: Discrepancy between Clinical, Neuroimaging, and Cerebrospinal Fluid Biomarkers Criteria in an Italian Cohort of Geriatric Outpatients: A Retrospective Cross-sectional Study. *Front Med (Lausanne)*. 2017;4:203. doi:10.3389/fmed.2017.00203
17. Gonzalez-Ortiz F, Karikari TK, Bentivenga GM, et al. Levels of plasma brain-derived tau and p-tau181 in Alzheimer's disease and rapidly progressive dementias. *Alzheimer's & Dementia*. n/a(n/a). doi:10.1002/alz.13516
18. Cullen N. Individualized prognosis of cognitive decline and dementia in mild cognitive impairment based on plasma biomarker combinations. *Nat Aging*. 2021;1.
19. Augustinack JC, Schneider A, Mandelkow EM, Hyman BT. Specific tau phosphorylation sites correlate with severity of neuronal cytopathology in Alzheimer's disease. *Acta Neuropathol*. 2002;103(1):26-35. doi:10.1007/s004010100423
20. Fladby T, Pålhaugen L, Selnes P, et al. Detecting At-Risk Alzheimer's Disease Cases. *J Alzheimers Dis*. 2017;60(1):97-105. doi:10.3233/JAD-170231
21. Albert MS, DeKosky ST, Dickson D, et al. The diagnosis of mild cognitive impairment due to Alzheimer's disease: recommendations from the National Institute on Aging-Alzheimer's Association workgroups on diagnostic guidelines for Alzheimer's disease. *Alzheimers Dement*. 2011;7(3):270-279. doi:10.1016/j.jalz.2011.03.008
22. Jessen F, Amariglio RE, van Boxtel M, et al. A conceptual framework for research on subjective cognitive decline in preclinical Alzheimer's disease. *Alzheimers Dement*. 2014;10(6):844-852. doi:10.1016/j.jalz.2014.01.001
23. Nordengen K, Kirsebom BE, Richter G, et al. Longitudinal cerebrospinal fluid measurements show glial hypo- and hyperactivation in prodementia Alzheimer's disease. *J Neuroinflammation*. 2023;20(1):298. doi:10.1186/s12974-023-02973-w
24. Tremblay-Mercier J, Madjar C, Das S, et al. Open science datasets from PREVENT-AD, a longitudinal cohort of pre-symptomatic Alzheimer's disease. *Neuroimage Clin*. 2021;31:102733. doi:10.1016/j.nicl.2021.102733
25. Siafarikas N, Kirsebom BE, Srivastava DP, et al. Cerebrospinal fluid markers for synaptic function and Alzheimer type changes in late life depression. *Sci Rep*. 2021;11(1):20375. doi:10.1038/s41598-021-99794-9
26. Ashton NJ, Pascoal TA, Karikari TK, et al. Plasma p-tau231: a new biomarker for incipient Alzheimer's disease pathology. *Acta Neuropathol*. 2021;141(5):709-724. doi:10.1007/s00401-021-02275-6
27. Gonzalez-Ortiz F, Ferreira PCL, González-Escalante A, et al. A novel ultrasensitive assay for plasma p-tau217: Performance in individuals with subjective cognitive decline and early Alzheimer's disease. *Alzheimer's & Dementia*. n/a(n/a). doi:10.1002/alz.13525
28. Yakoub Y, Ashton NJ, Strikwerda-Brown C, et al. Longitudinal blood biomarker trajectories in preclinical Alzheimer's disease. *Alzheimer's & Dementia*. 2023;19(12):5620-5631. doi:10.1002/alz.13318

29. Fillenbaum GG, van Belle G, Morris JC, et al. Consortium to Establish a Registry for Alzheimer's Disease (CERAD): the first twenty years. *Alzheimers Dement.* 2008;4(2):96-109. doi:10.1016/j.jalz.2007.08.005
30. Rajbanshi B, Guruacharya A, Mandell JW, Bloom GS. Localization, induction, and cellular effects of tau phosphorylated at threonine 2171. *Alzheimer's & Dementia.* 2023;19(7):2874-2887. doi:10.1002/alz.12892

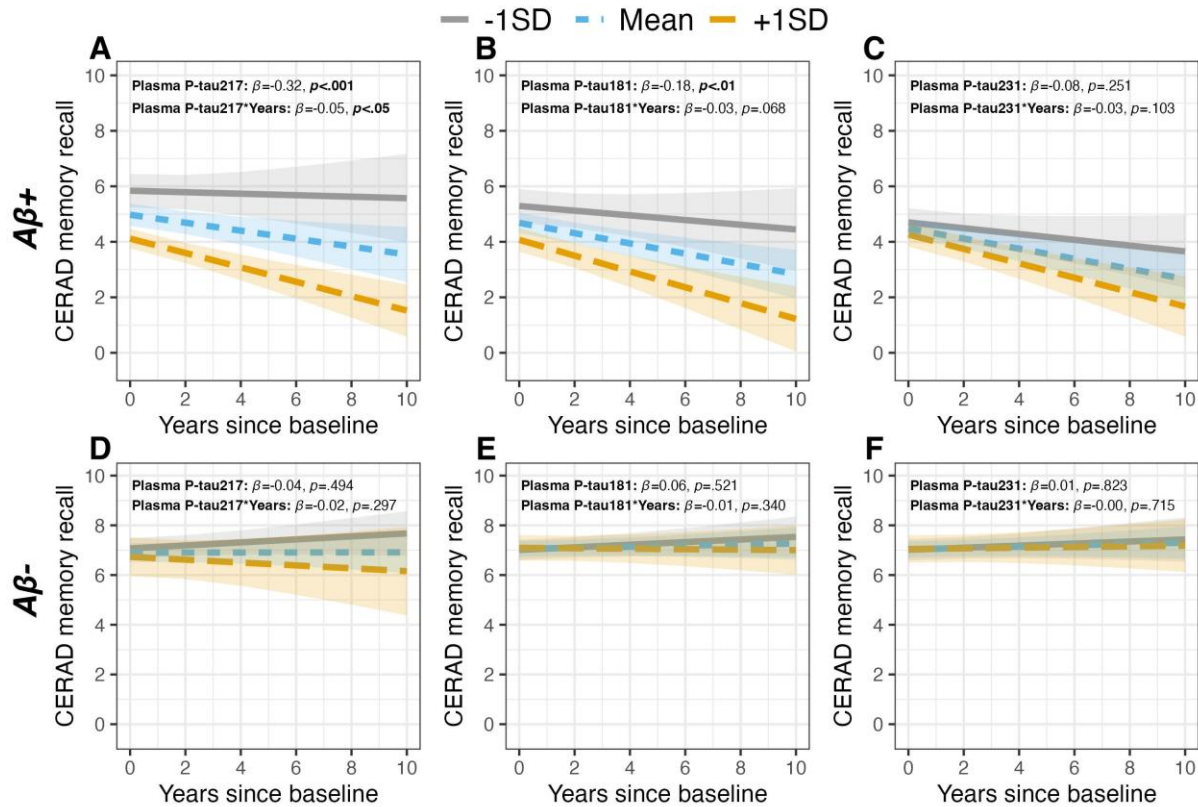
## Figure legends and Table



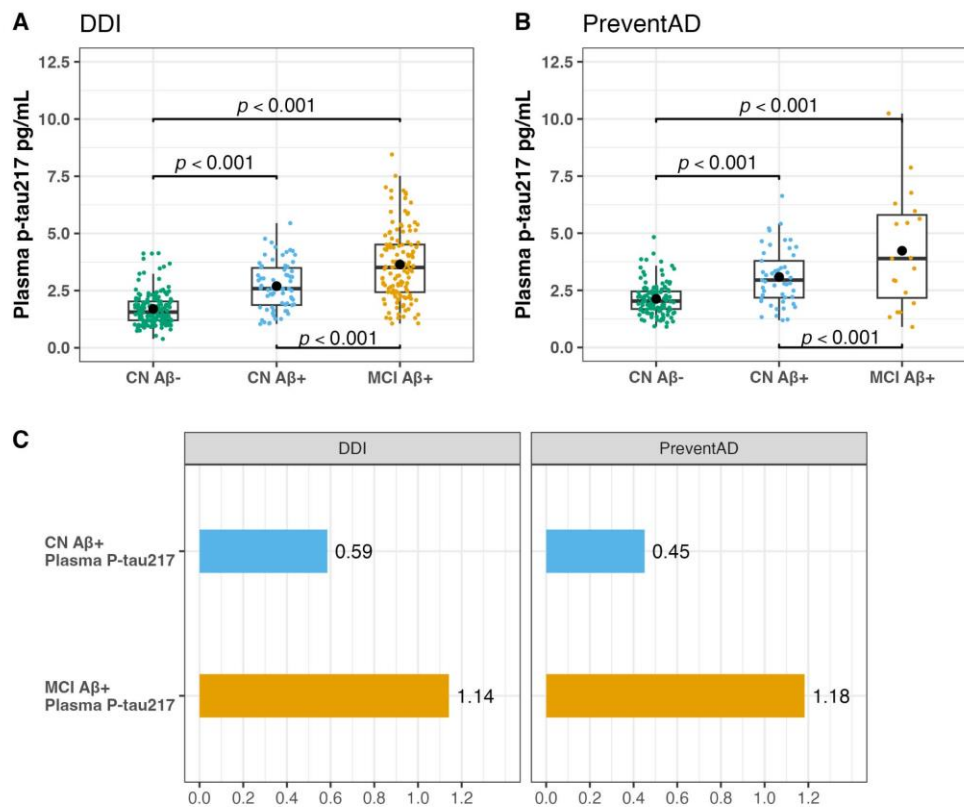
**Figure 1. Agreements between CSF and plasma p-tau biomarkers in cohort-1.** Scatterplots illustrating the spearman's rho correlations between plasma and CSF p-tau markers **Figure 1A-C)** show the correlations of plasma p-tau217, p-tau181 and p-tau231 with their corresponding CSF markers. **Figure 1D-F)** show the CSF-plasma correlations of p-tau217, p-tau181 and p-tau231 in the different A/T groups.



**Figure 2. Diagnostic accuracy of plasma p-tau markers in cohort-1.** Receiver Operating Characteristic (ROC) curves and corresponding areas under the curve (AUC) showing the discriminative ability of the different plasma p-tau biomarkers. **Figure 2A-C)** ROC curves and AUCs of plasma p-tau217, p-tau181 and p-tau231 identifying Aβ<sup>+</sup> individuals based on their cognitive status. **Figure 2D-F)** ROC curves and AUCs of plasma p-tau217, p-tau181 and p-tau231 identifying Aβ<sup>+</sup> individuals according to their A/T profile in CSF.



**Figure 3. Baseline and longitudinal associations of plasma p-tau markers with the Consortium to Establish a Registry for Alzheimer’s Disease (CERAD) memory recall test in cohort-1.** Figure 3A-C) show the baseline and longitudinal associations of plasma p-tau217, p-tau181 and p-tau231 with the CERAD memory recall test in  $A\beta+$  individuals. Figure 3D-F) show the baseline and longitudinal associations of plasma p-tau217, p-tau181 and p-tau231 with the CERAD memory recall test in  $A\beta-$  individuals. The lines display associations between the biomarker at  $-1SD$  (grey), Mean (blue) and  $+1SD$  (orange) and the dependent variable at baseline and over time.

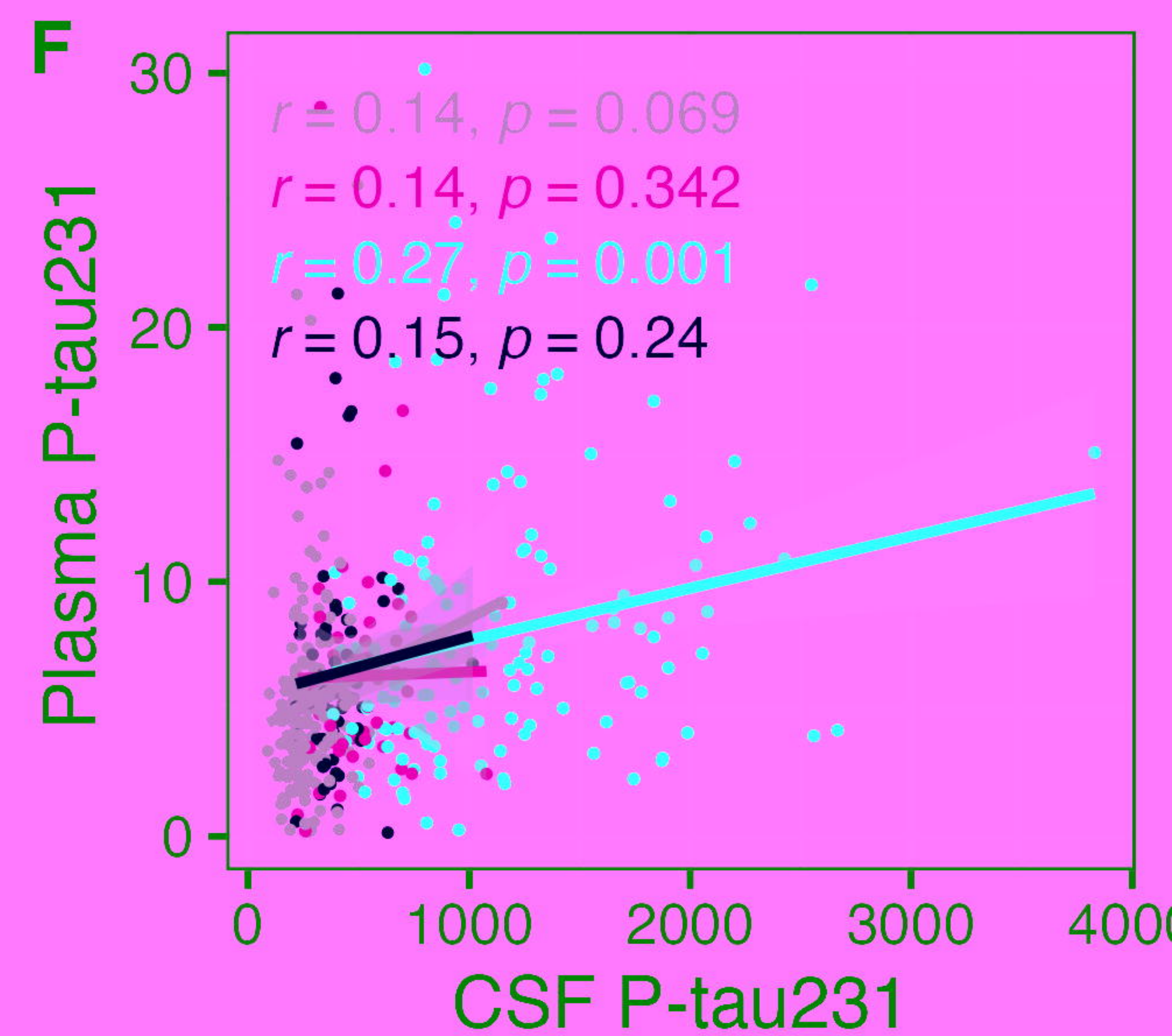
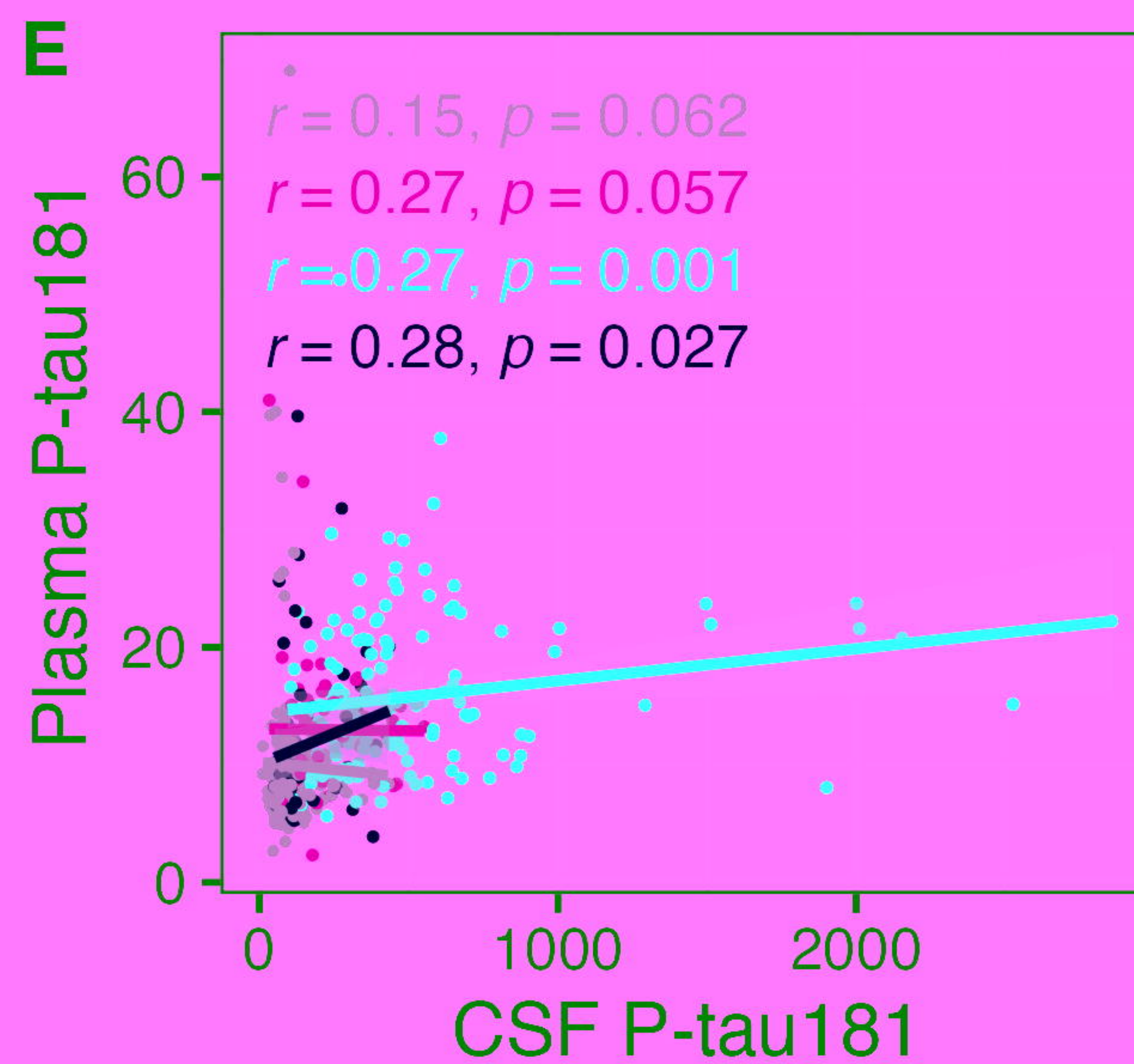
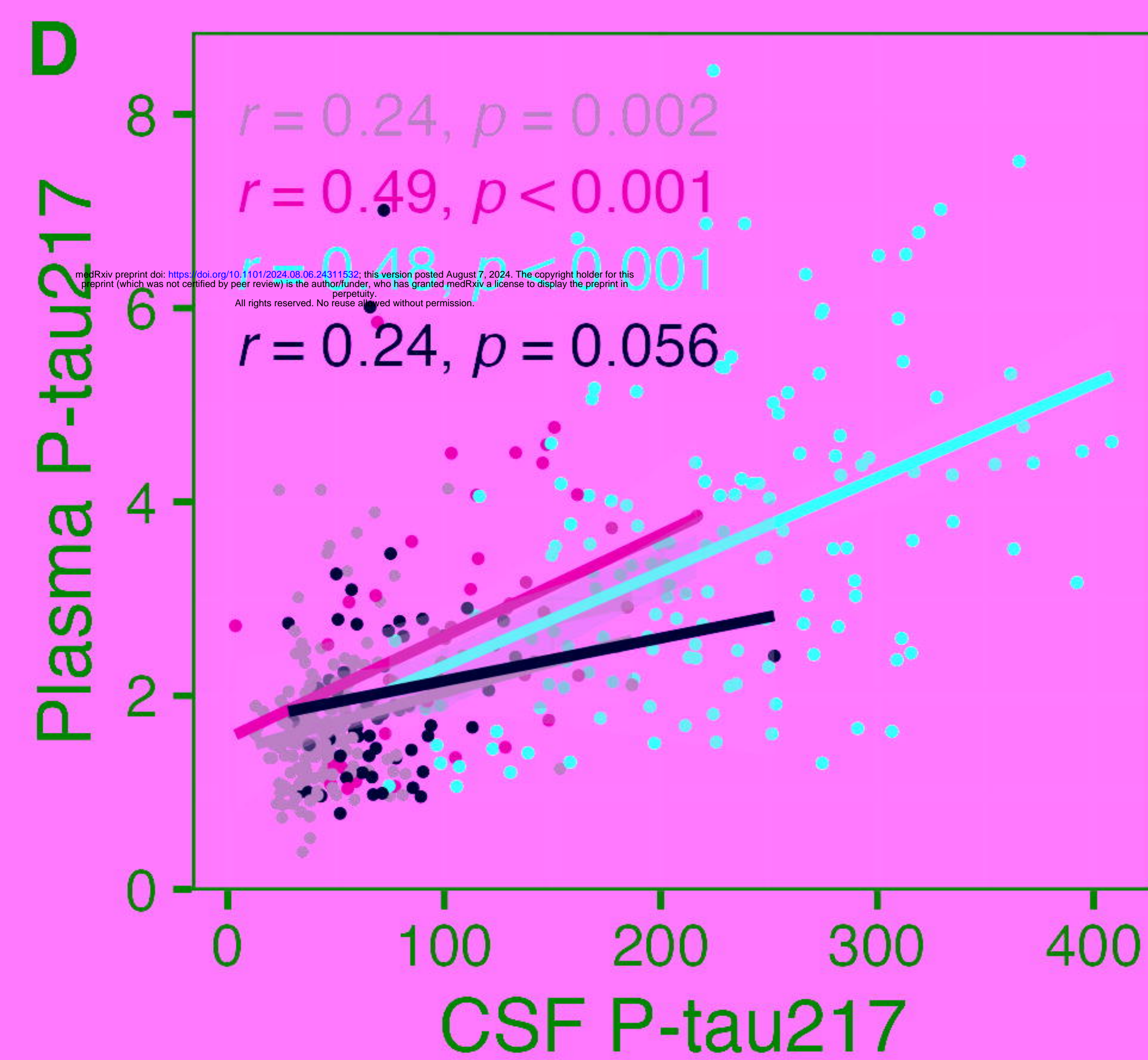
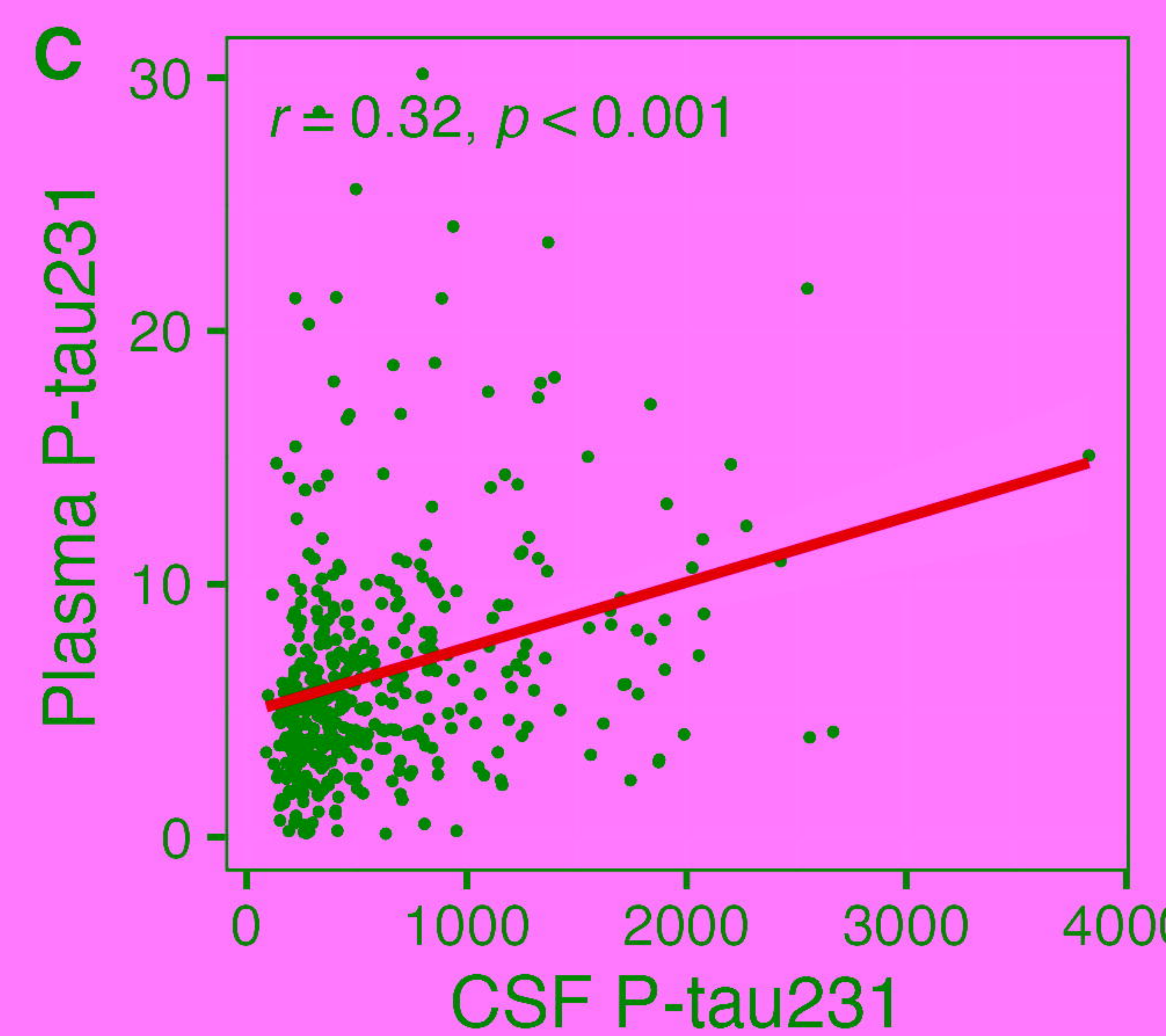
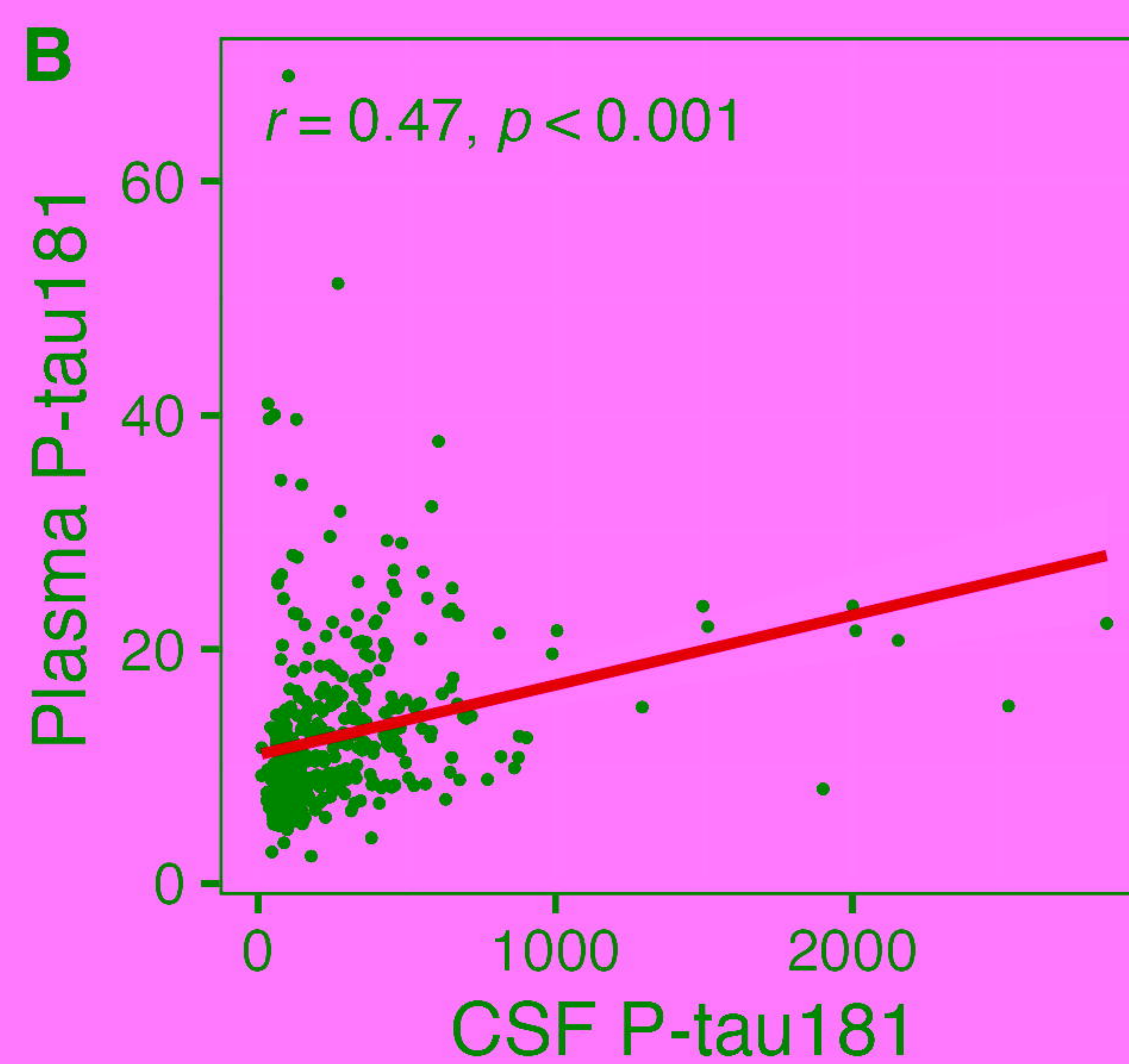
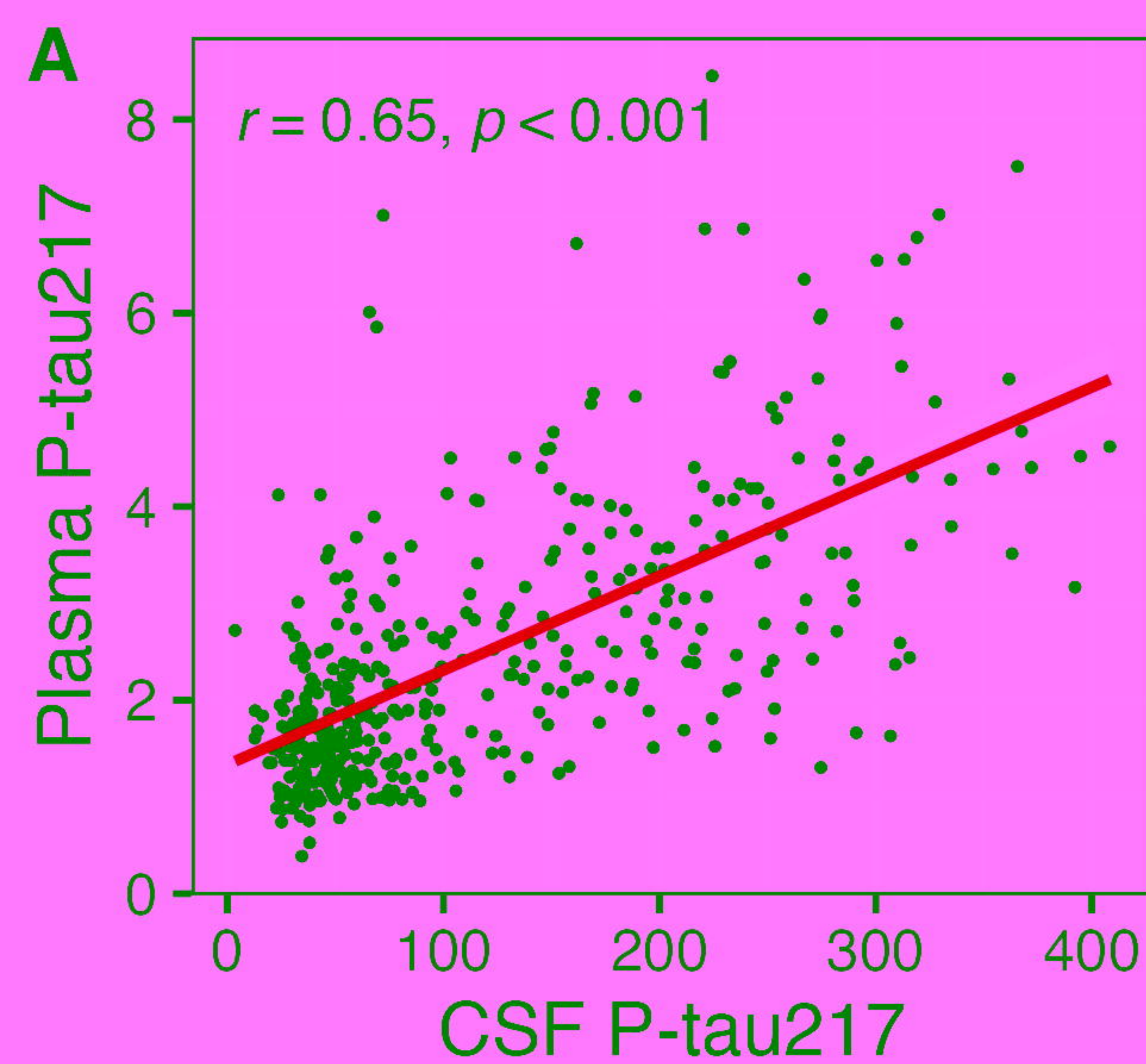


**Figure 4. Plasma p-tau217 concentrations and mean fold increases according to cognition in cohort 1 and 2. Figure 4A and B)** Boxplots showing concentrations of plasma p-tau217 (pg/ml) in CN Aβ-, CN Aβ+ and MCI Aβ+ individuals in cohort 1 and 2. The brackets show statistically significant differences between the groups (FDR adjusted p-values). **Figure 4C)** The Bar graphs illustrate the mean fold increases of plasma p-tau217 in Aβ+ CN and Aβ+ MCI participants compared with CN Aβ- in cohort 1 and cohort 2.

**Table 1.** Between-group comparisons of demographics, *APOE-ε4* carrier status, diagnoses, plasma and CSF p-tau markers in cohort-1.

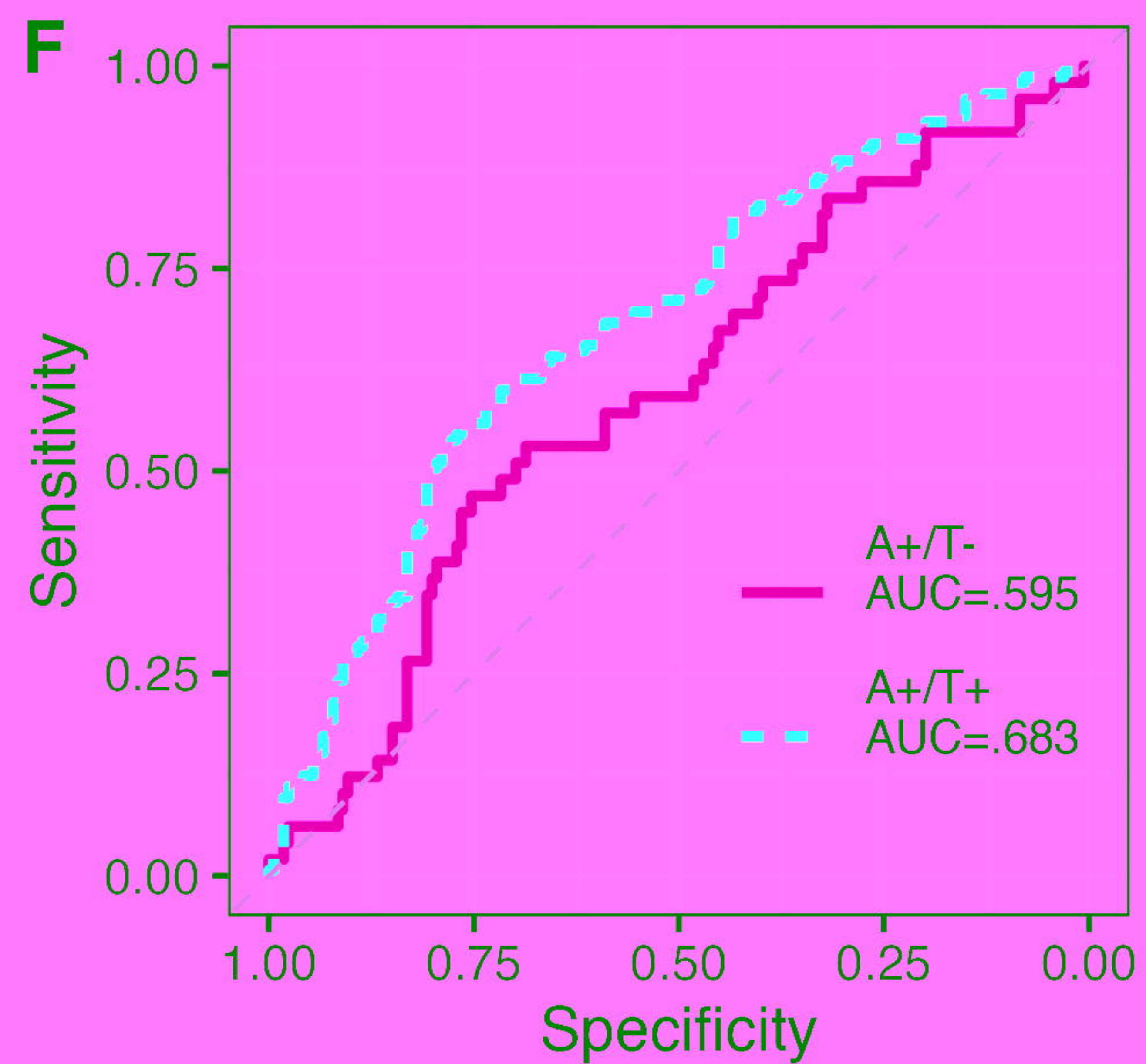
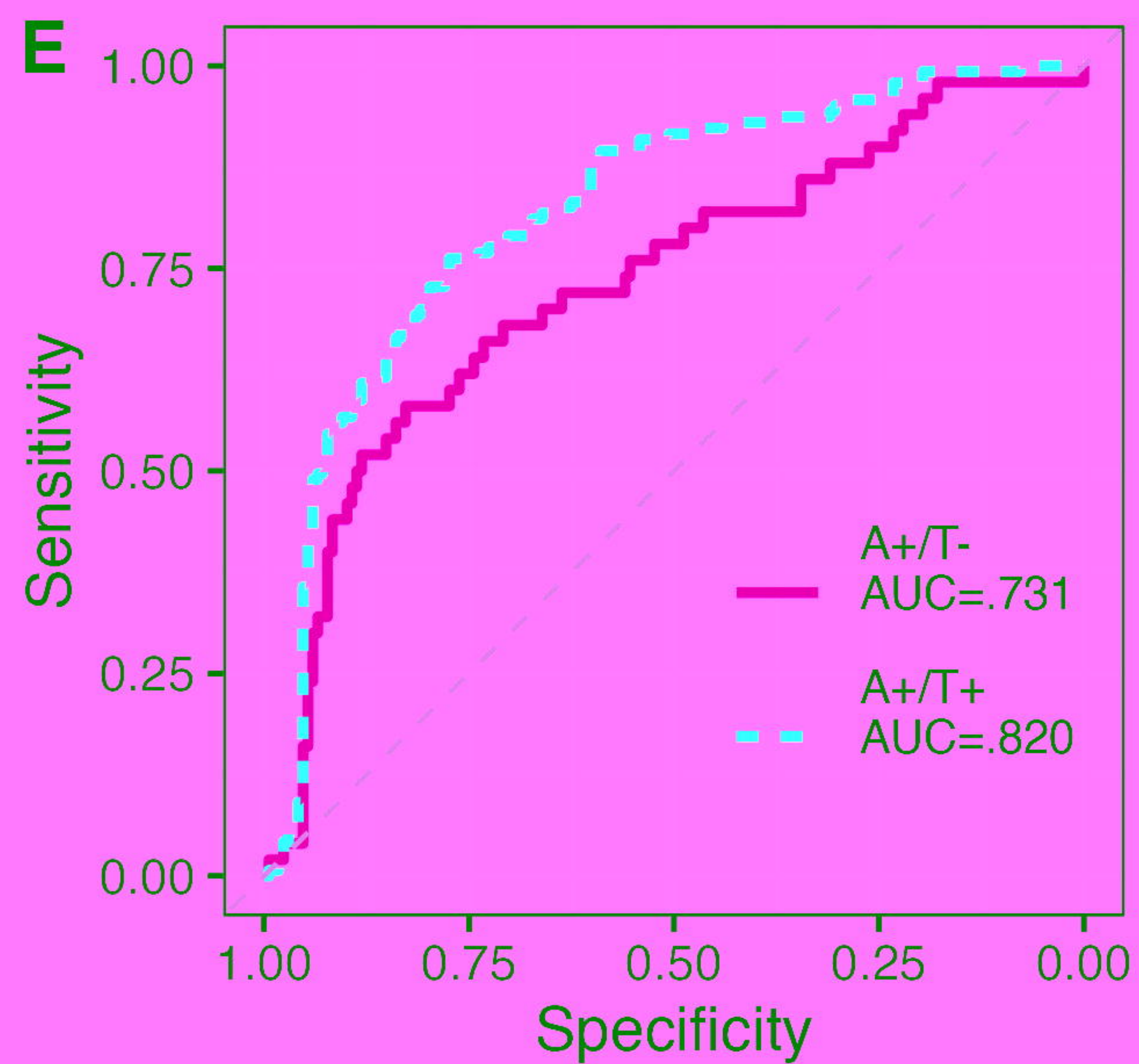
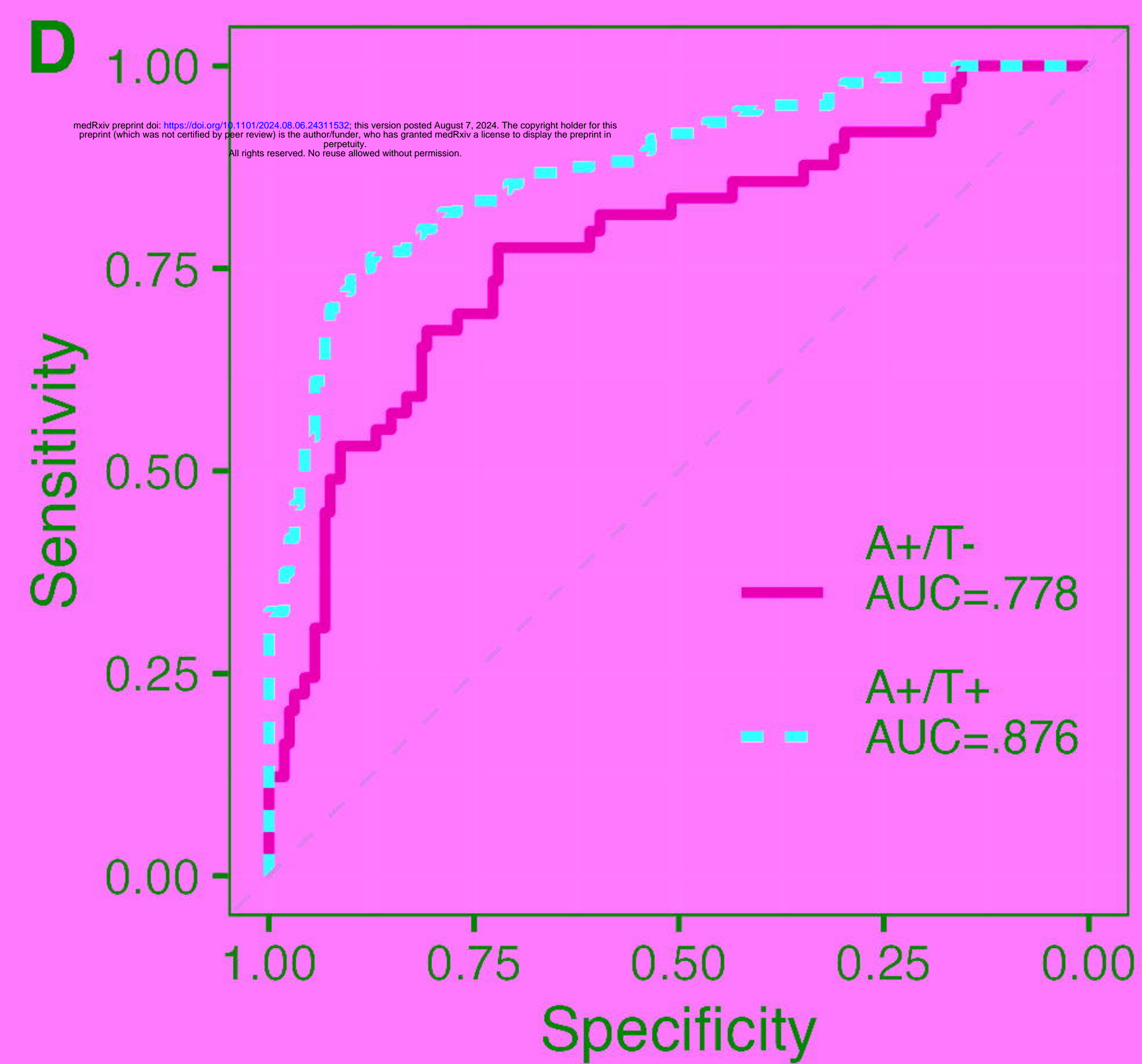
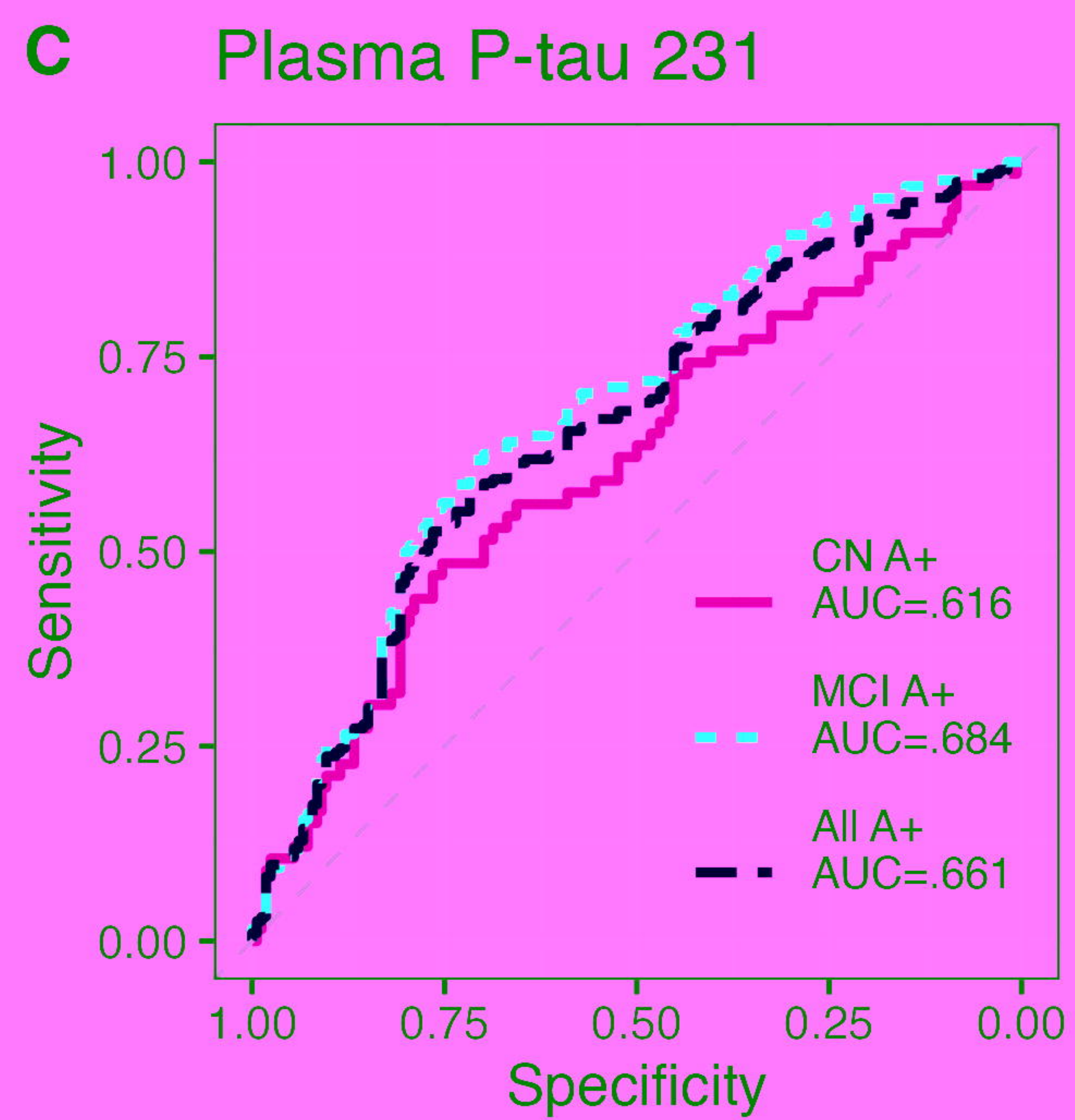
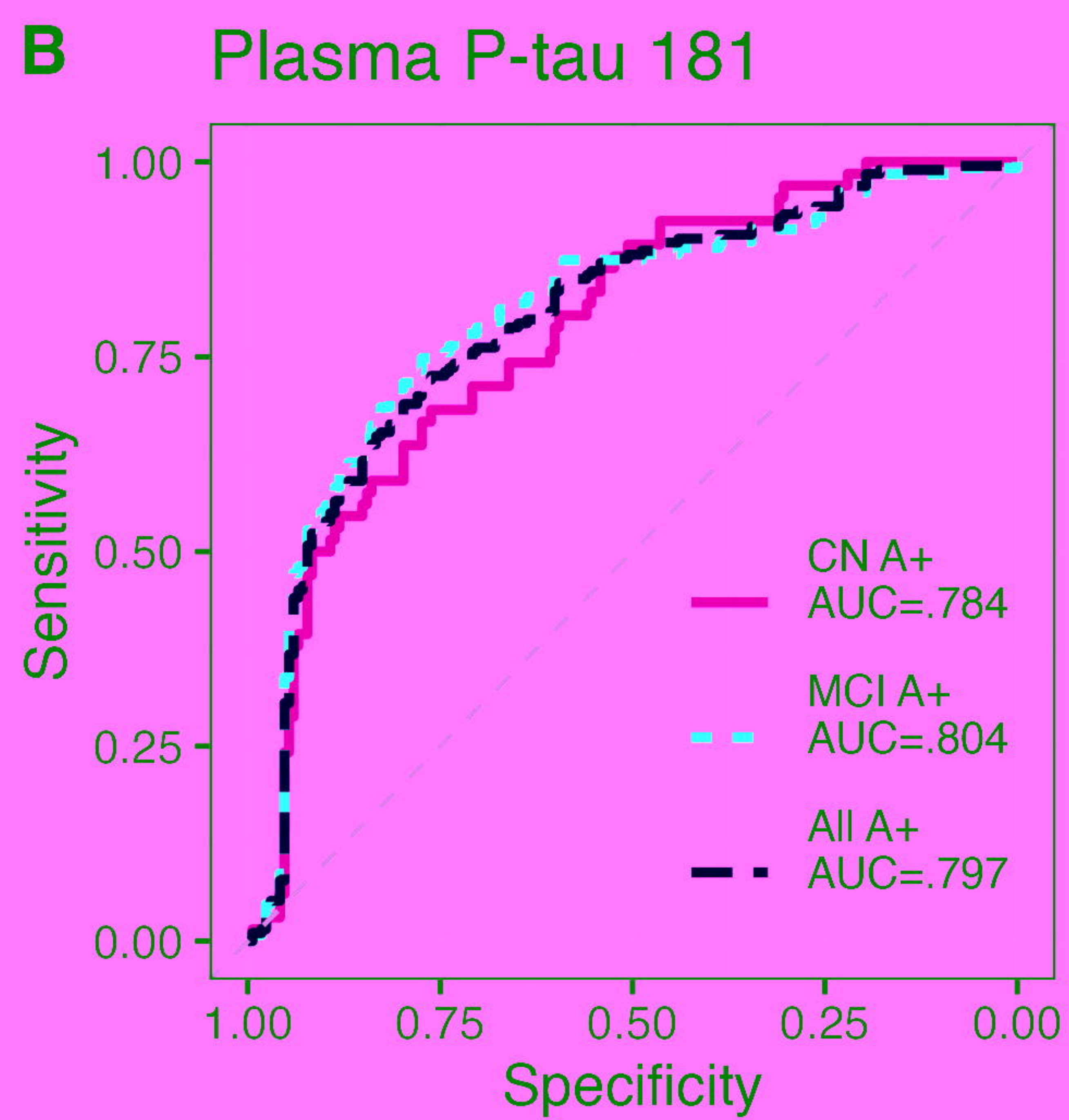
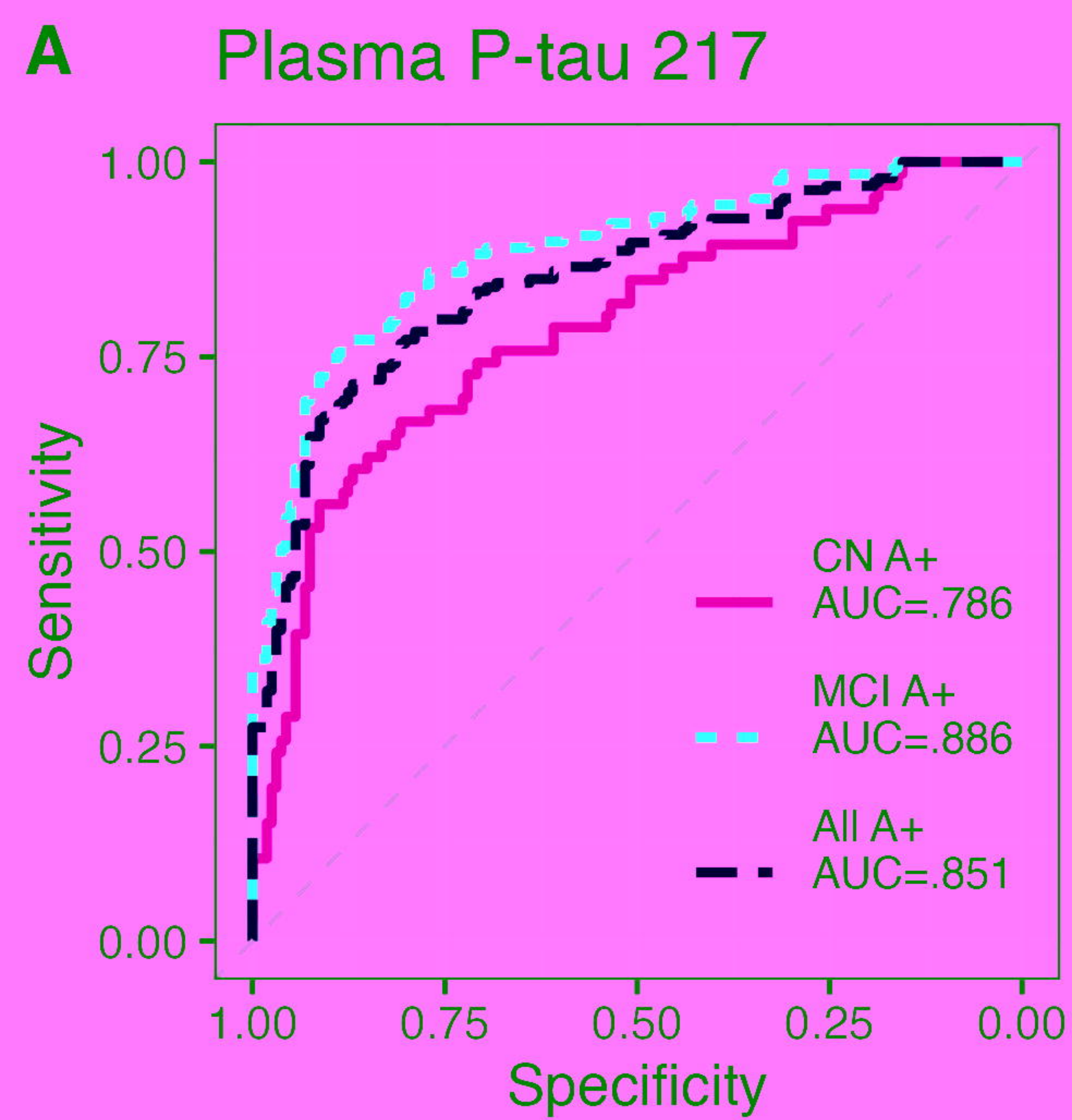
	ATN groups (n)				<i>F</i> / $\chi^2$ / $\eta^2$ ( <i>p</i> )	Post-hoc comparisons ( <i>p</i> )		
	CN A-/T- 169	A+/T- 50	A+/T+ 145	A-/T+ 67		A+/T- vs A+/T+	A+/T- vs A-/T+	A+/T+ vs A-/T+
<b>Age</b> Mean (SD)	60.04 (9.13)	66.66*** (7.52)	67.86*** (7.85)	64.51*** (9.66)	<i>F</i> =23.13, $\eta^2$ =.14 ( <b>&lt;.001</b> )	n.s. <sup>b</sup>	n.s. <sup>b</sup>	<b>&lt;.05<sup>b</sup></b>
<b>Female</b> n (%)	94 (56%)	36 (72%)	73 (50%)	38 (57%)	$\chi^2$ =7.10, (.068)	b	b	b
<b>APOE-ε4 carrier status</b> n (%) [n]	53 (32%) [164]	35 (74%) [47]	106 (77%) [138]	27 (44%) [62]	$\chi^2$ =70.54, ( <b>&lt;.001</b> )	b	b	b
<b>Diagnoses</b>					$\chi^2$ =182.94, ( <b>&lt;.001</b> )			
<b>CN</b> (n %)	169 (100%)	26 (52%)	40 (28%)	34 (51%)		c	c	c
<b>MCI</b> (n %)	0 (0%)	24 (48%)	105 (72%)	33 (49%)				
<b>Plasma p-tau181<sup>a</sup></b> Mean (SD) [n]	9.92 (7.03) [168]	13.00*** (6.41)	15.71*** (6.84) [143]	11.62* (6.73) [66]	<i>F</i> =34.07, $\eta^2$ =.19 ( <b>&lt;.001</b> )	<b>&lt;.01<sup>b</sup></b>	n.s. <sup>b</sup>	<b>&lt;.001<sup>b</sup></b>
<b>Plasma p-tau217<sup>a</sup></b> Mean (SD) [n]	1.70 (0.70) [161]	2.68*** (1.12) [49]	3.54*** (1.53) [144]	1.99* (1.04) [66]	<i>F</i> =76.01, $\eta^2$ =.35 ( <b>&lt;.001</b> )	<b>&lt;.001<sup>b</sup></b>	<b>&lt;.001<sup>b</sup></b>	<b>&lt;.001<sup>b</sup></b>
<b>Plasma p-tau231<sup>a</sup></b> Mean (SD) [n]	5.28 (3.86) [49]	6.30 (4.54)	7.91*** (5.07)	6.31 (4.11) [65]	<i>F</i> =9.41, $\eta^2$ =.06 ( <b>&lt;.001</b> )	n.s. <sup>b</sup>	n.s. <sup>b</sup>	n.s. <sup>b</sup>
<b>CSF p-tau181<sup>a</sup></b> Mean (SD) [n]	107.89 (78.16) [167]	206.26 (122.78)	505.84*** (450.57) [141]	168.48*** (104.70) [64]	<i>F</i> =142.5, $\eta^2$ =.51 ( <b>&lt;.001</b> )	<b>&lt;.001<sup>b</sup></b>	n.s. <sup>b</sup>	<b>&lt;.001<sup>b</sup></b>
<b>CSF p-tau217<sup>a</sup></b> Mean (SD) [n]	46.23 (24.11)	106.25*** (43.63)	226.27*** (72.20) [144]	73.49*** (32.92) [64]	<i>F</i> =395.2, $\eta^2$ =.74 ( <b>&lt;.001</b> )	<b>&lt;.001<sup>a</sup></b>	<b>&lt;.001<sup>a</sup></b>	<b>&lt;.001<sup>b</sup></b>
<b>CSF p-tau231<sup>a</sup></b> Mean (SD) [n]	284.46 (134.35) [167]	506.63*** (168.08)	1126.52*** (562.90) [141]	411.93*** (129.22) [64]	<i>F</i> =300.8, $\eta^2$ =.68 ( <b>&lt;.001</b> )	<b>&lt;.001<sup>b</sup></b>	<b>&lt;.01<sup>b</sup></b>	<b>&lt;.001<sup>b</sup></b>
<b>GFR</b> Mean (SD) [n]	79.49 (14.76) [110]	79.96 (12.33) [45]	81.04 (14.00) [128]	75.46 (15.03) [52]	<i>F</i> =1.94, (.123)	c	c	c
<b>CSF/plasma albumin ratios</b> Mean (SD) [n]	6.59 (3.93) [103]	6.21 (2.23) [37]	6.34 (2.54) [102]	6.70 (2.50) [35]	<i>F</i> =0.27, (.846)	c	c	c

Abbreviations: A+/-, positive or negative Cerebrospinal fluid (CSF) marker for Aβ plaques; T+/-, positive or negative marker for CSF p-tau181; SD, standard deviation; n, number of cases; %, percentage; *F*, *F* statistic;  $\chi^2$ , chi square statistic;  $\eta^2$ , eta-squared; vs, versus; APOE, apolipoprotein E; CN, Cognitively normal; MCI, Mild Cognitive Impairment; GFR, Glomerular Filtration Rate; a, measured in pg/mL; b, ANOVA post-hoc (False Discovery Rate adjustment); c, no post-hoc comparisons performed; \*, <.05, \*\*, <.01, \*\*\*<.001 (compared to the CN A-/T- group).

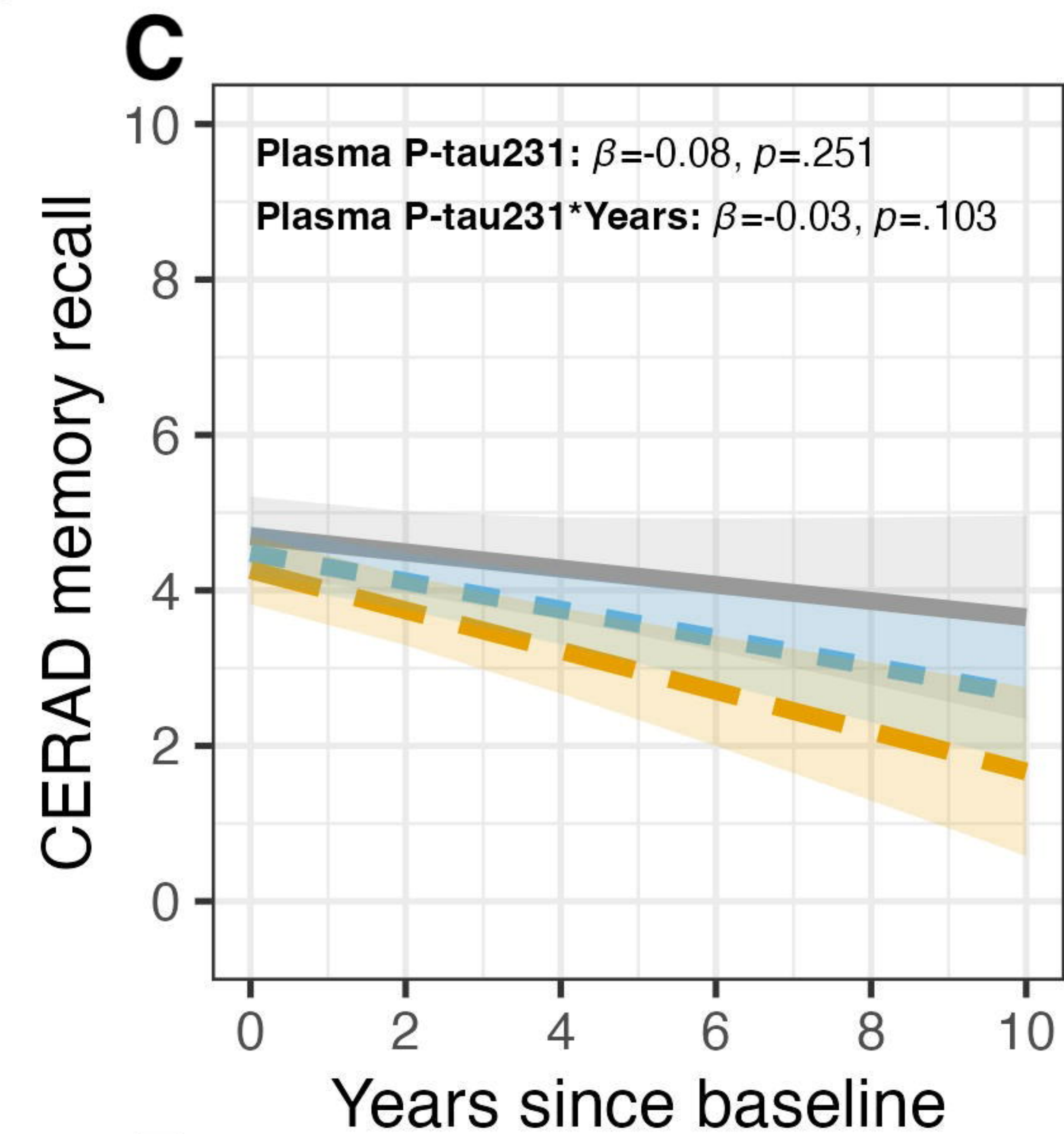
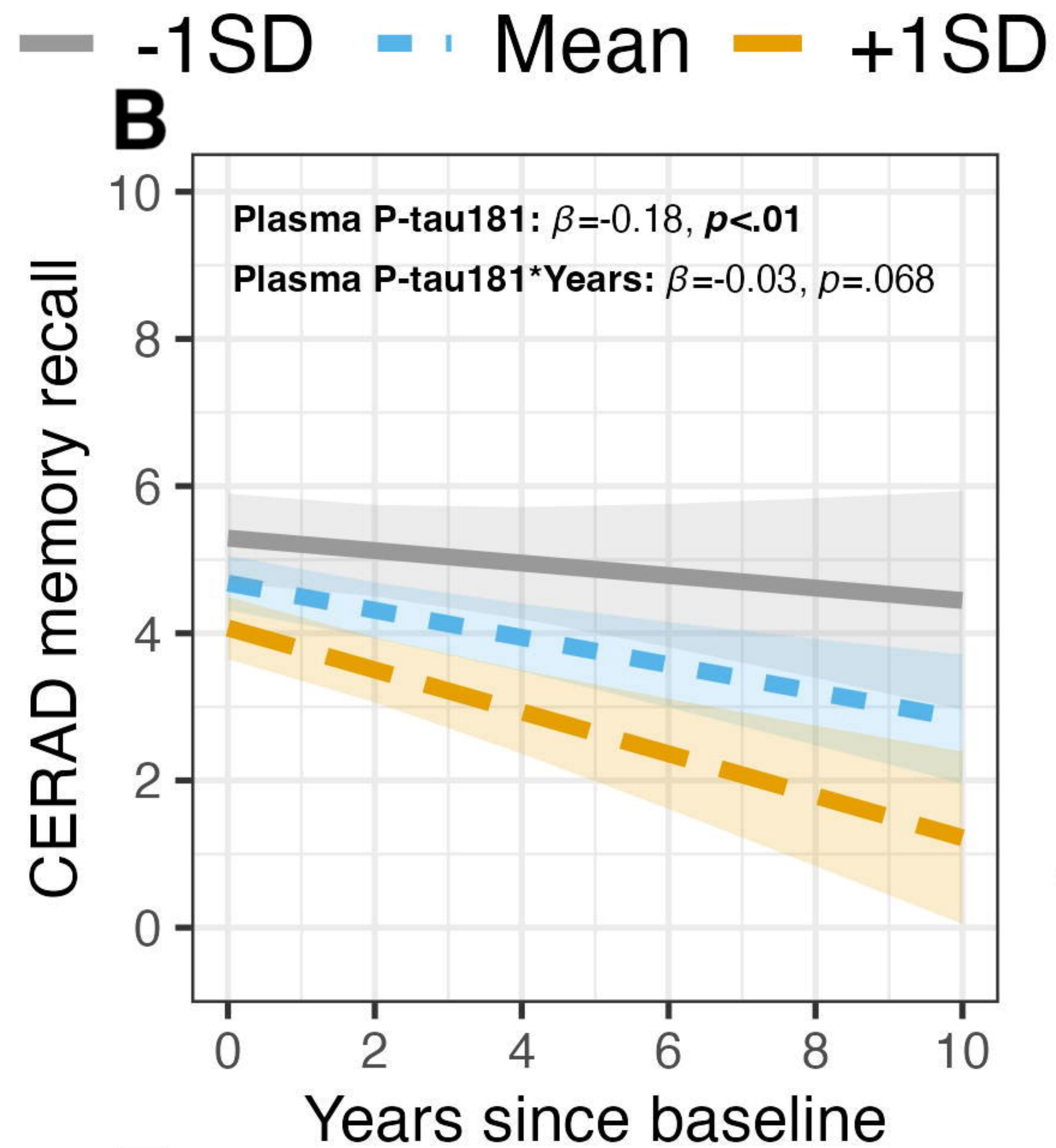
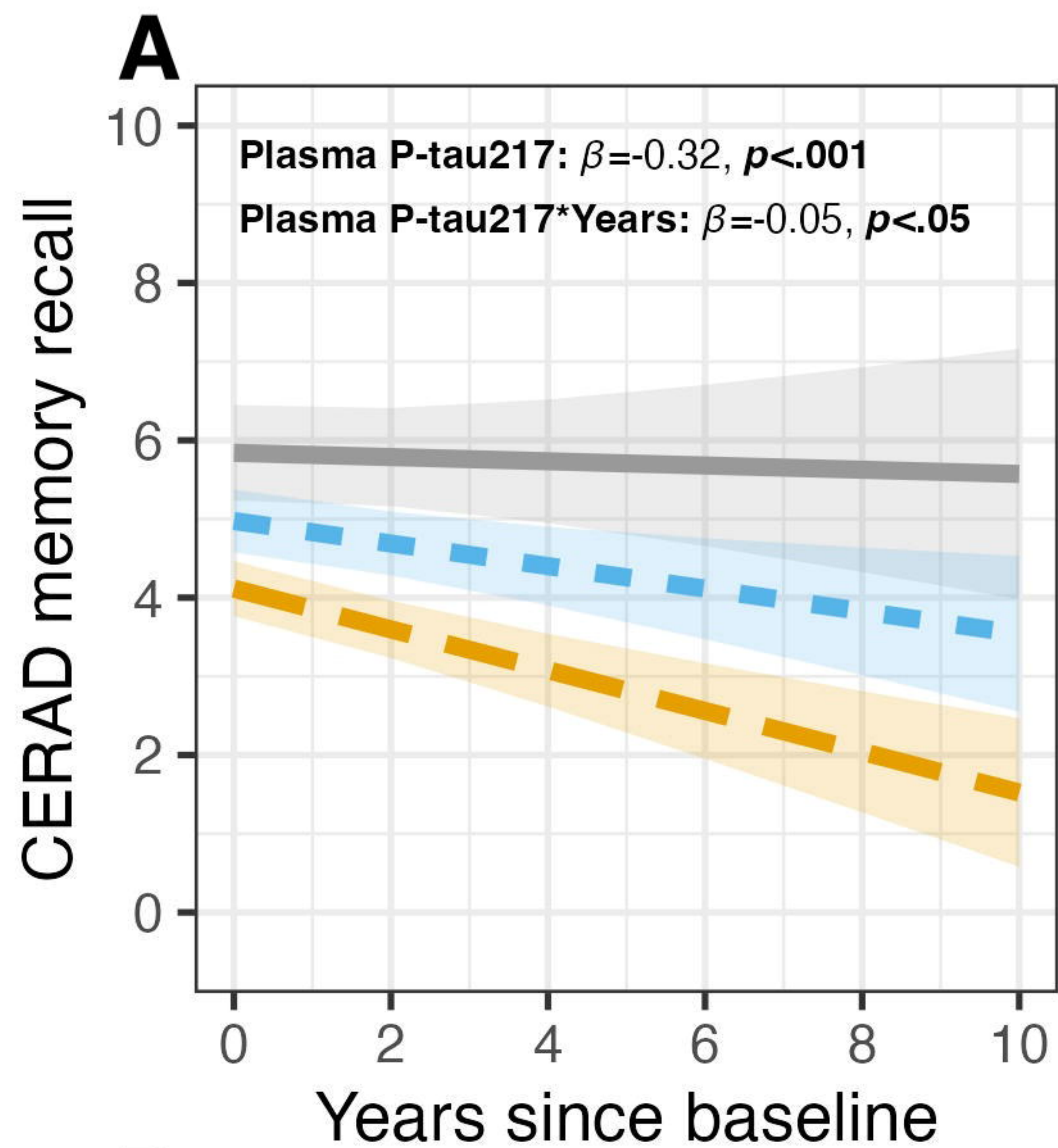


— CN A-/T- — A+/T- — A+/T+ — A-/T+





**Aβ+**



medRxiv preprint doi: <https://doi.org/10.1101/2024.08.06.24311532>; this version posted August 7, 2024. The copyright holder for this preprint (which was not certified by peer review) is the author/funder, who has granted medRxiv a license to display the preprint in perpetuity. All rights reserved. No reuse allowed without permission.

**Aβ-**

