

Supplementary figures

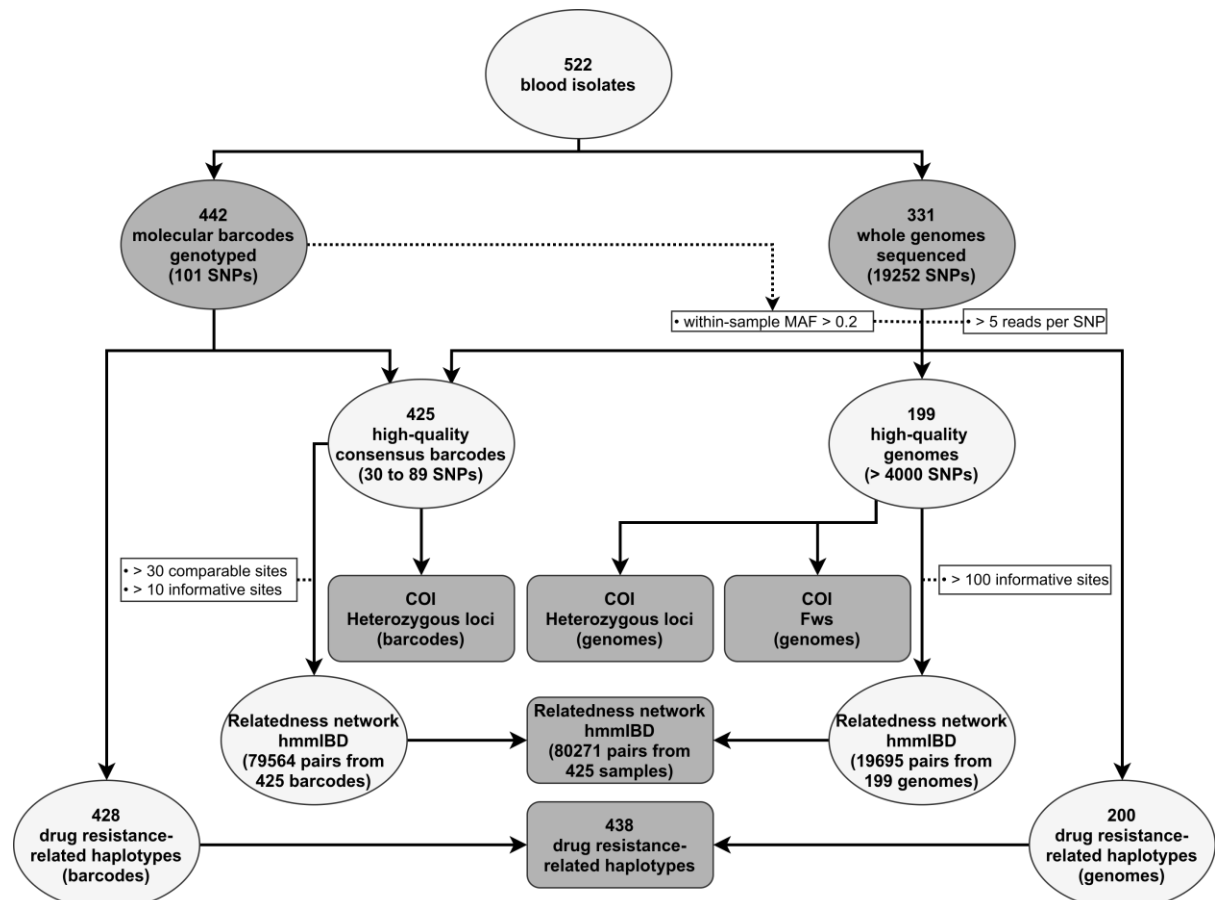


Figure S1: Steps of the combined barcode- and genome-analysis pipeline using 522 *P. falciparum*-positive blood isolates.

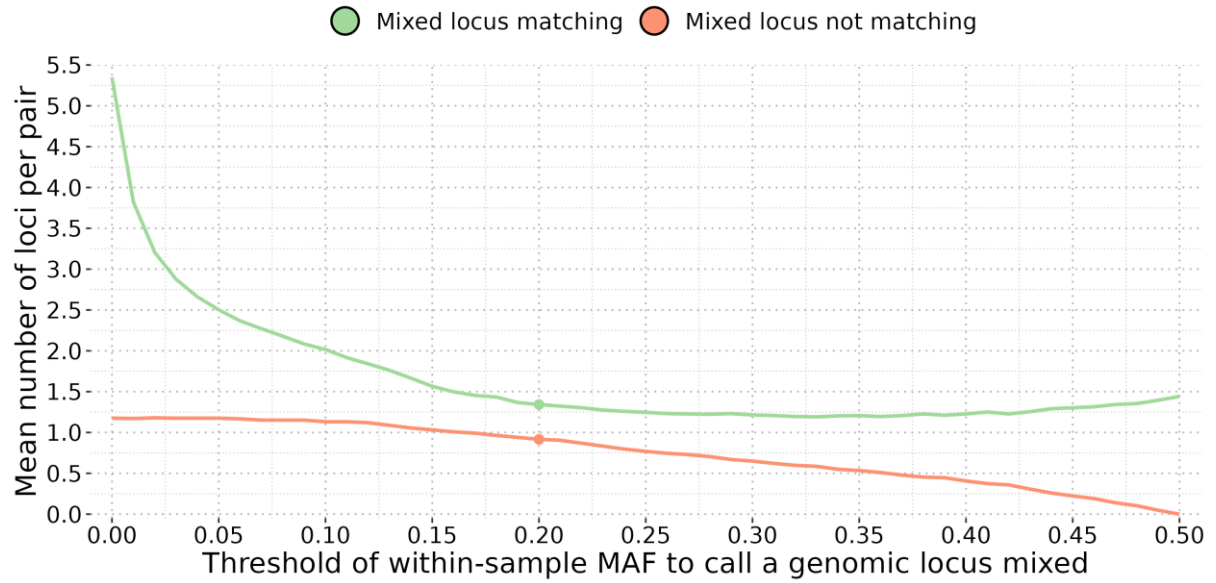


Figure S2: Comparison of mixed loci between each pair of molecular barcode obtained by genotyping and their corresponding genomic barcode built from allelic frequencies.

Genome loci were considered mixed if their within-sample Minor Allele Frequencies (MAF) were between 0 and 0.5. The threshold of within-sample MAF of 0.2 was finally retained because it yields a high number of matches and a low number of mismatches of mixed loci, making the genomic barcode as close as possible to the molecular one.

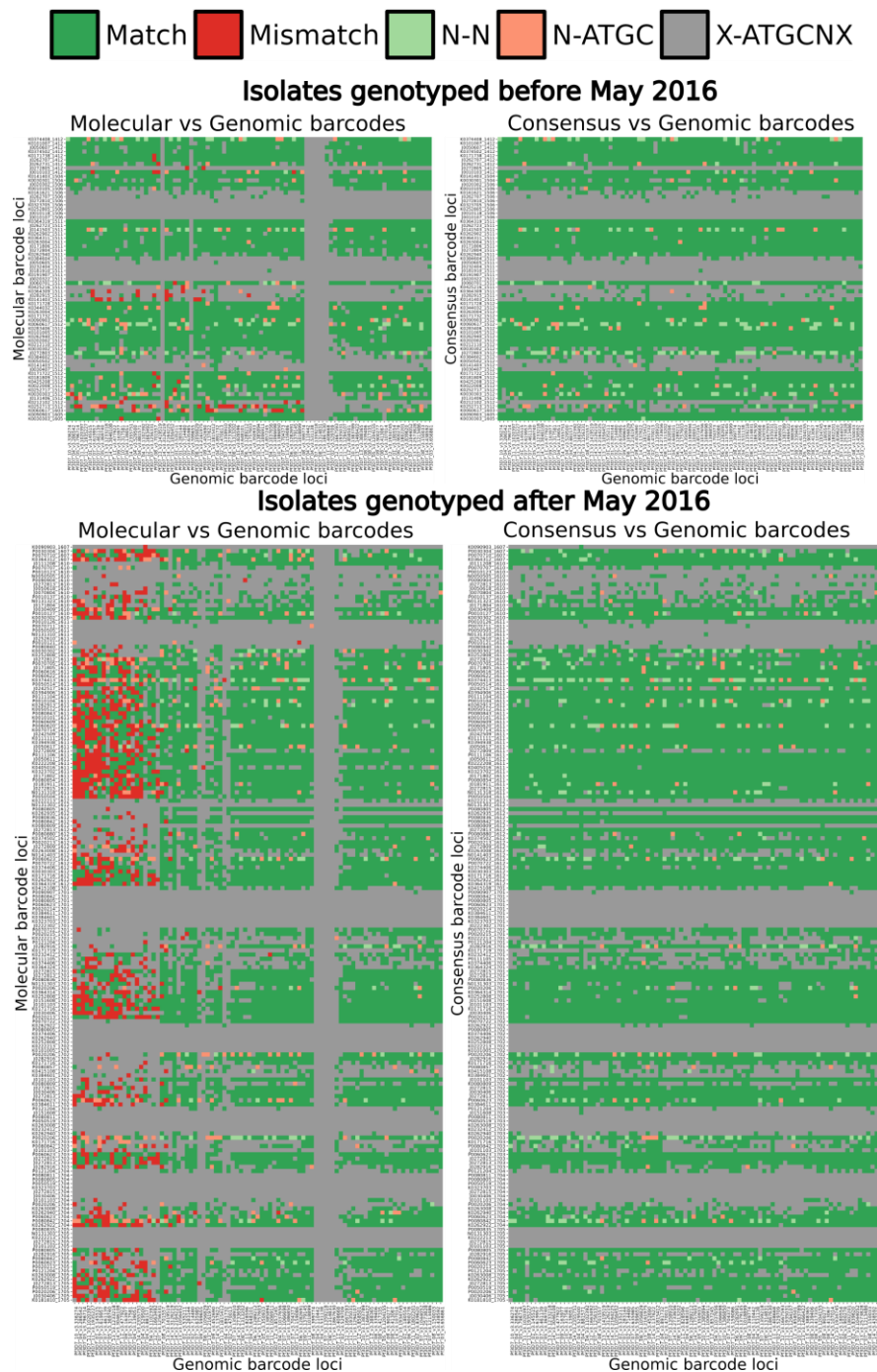


Figure S3: Pairwise comparison of molecular barcodes locus (built from genotyped SNPs) and consensus barcodes locus (combining molecular and genomic barcodes) with genomic barcodes locus (built from WGS locus). Each SNP from each barcode comparison is colour-coded as ‘matching’ (green), ‘mismatching’ (red), ‘matching a mixed call’ (blue), ‘not matching a mixed call’ (yellow) or ‘incomparable when at least one call is unknown’ (grey). WGS locus were considered mixed if the within sample MAF was above 0.2 (Figure S2). Overall, locus match between the two methods when the genotyping was done before May 2016 while 21 genotyped loci show a consistent mismatch with WGS locus for all samples genotyped after May 2016. As such, these genotyped loci are incorrect calls resulting from an unknown issue during the genotyping procedure. To increase the number of available locus from barcodes, all unknown and incorrectly genotyped locus were replaced by WGS locus, resulting in a ‘consensus barcodes’.

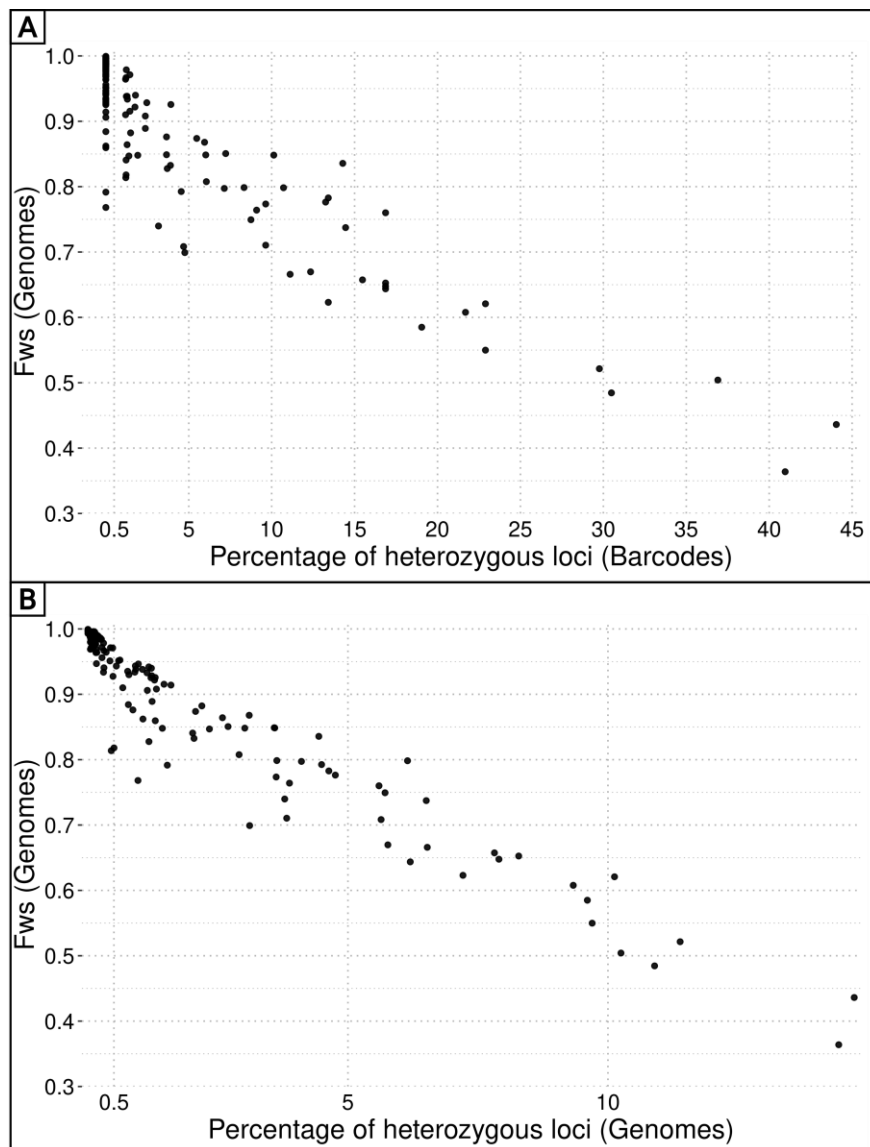


Figure S4: Correlation between F_{ws} values and percentage of heterozygous loci. (A) The percentage of heterozygous loci in barcodes range from 0 to more than 40 %, highlighting their high variability among *P. falciparum* strains. The percentage of heterozygous loci shows a strong negative correlation with their corresponding F_{ws} value ($R^2 = 0.83$, p-value $< 10^{-15}$). Considering isolates with F_{ws} values available, only 14 % (19/132) of monoclonal isolates (heterozygous site proportion below 0.005) have a F_{ws} value below 0.95 and 6 % (4/64) of polyclonal isolates (heterozygous site proportion above 0.005) have a F_{ws} value above 0.95. (B) The percentage of heterozygous loci in genomes range from 0 to less than 15 %, which is expected as the 19252 SNPs had various population-level MAF. The percentage of heterozygous loci shows a strong negative correlation with their corresponding F_{ws} value ($R^2 = 0.92$, p-value $< 10^{-15}$). Computing the proportion of heterozygous loci in both genome and barcode data (84 SNPs) enables to accurately estimate the level of clonality of an isolate.

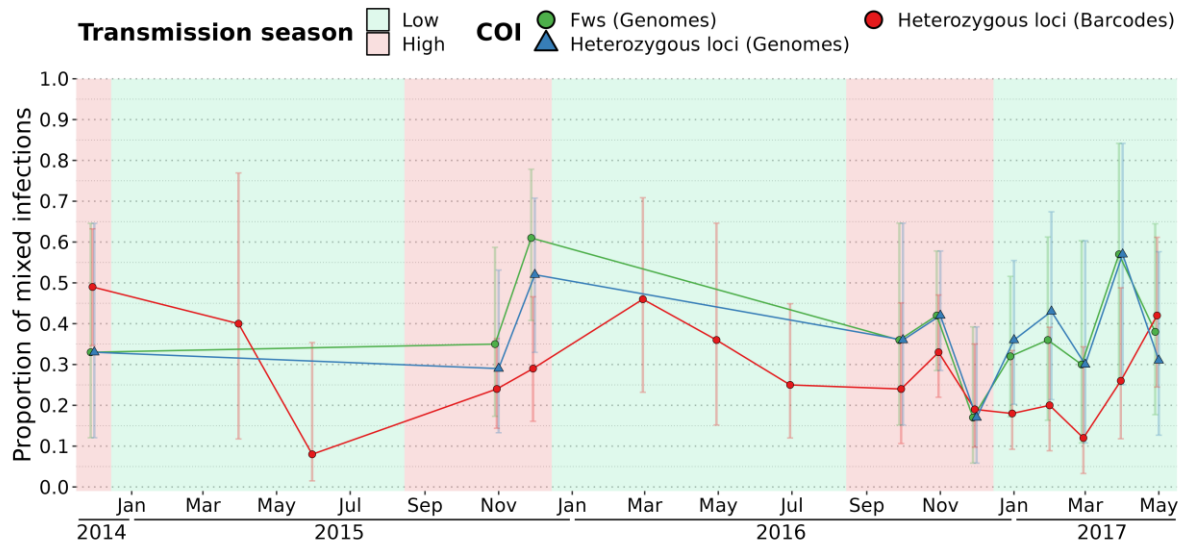


Figure S5: Proportion of polyclonal isolates over time estimated by F_{ws} ($F_{ws} < 0.95$) and the proportion of heterozygous loci (more than 0.5 % of available sites) on barcodes and genomes. The percentage of polyclonal isolates is stable over time for all methods (around 40 % for F_{ws} , 38 % using heterozygous loci of genomes, 28 % using heterozygous loci of barcodes). Error bars represent the 95 % Wilson's confidence intervals.

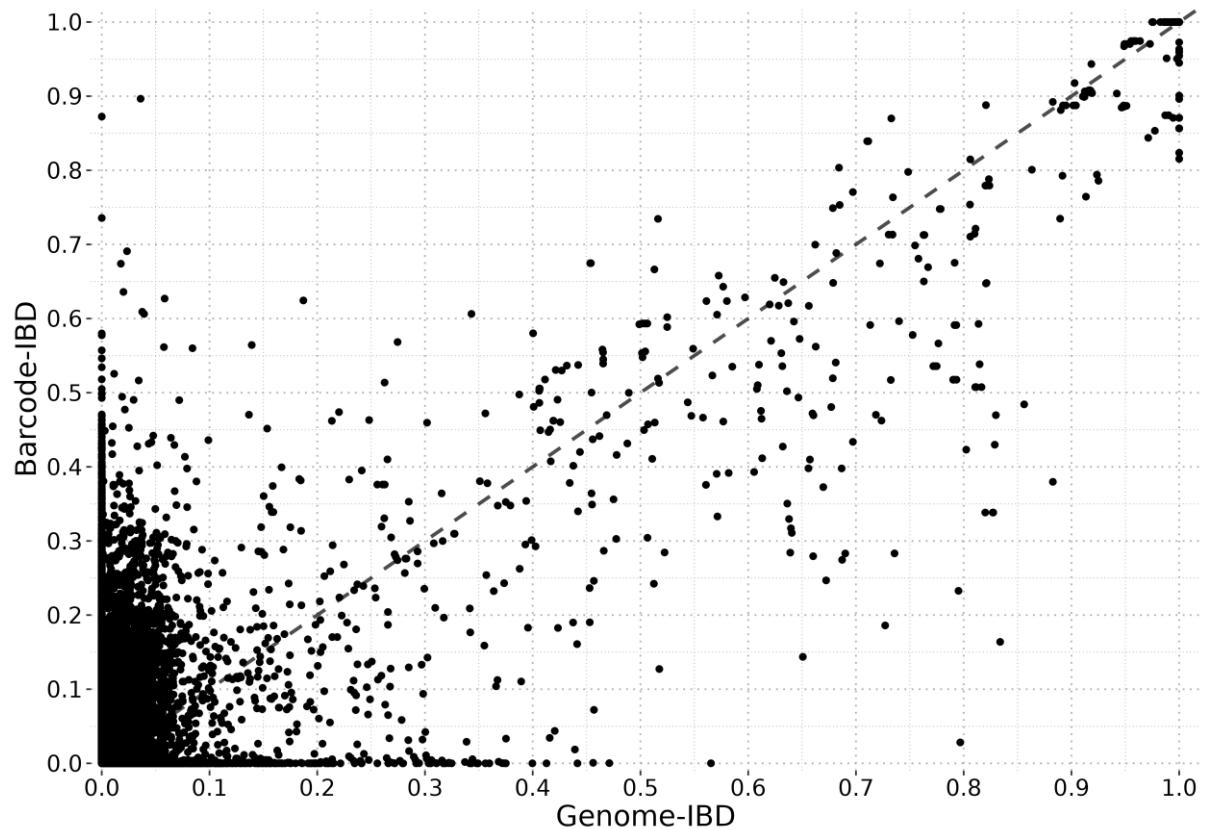


Figure S6: IBD calculated from consensus barcodes highly correlates with IBD from genomes. Identity By Descent was calculated pairwise between the 425 high-quality consensus barcodes ('barcode-IBD') with at least 30 comparable sites and 10 informative positions (79564/90100 pairs remaining) and between the 199 high-quality genomes ('genome-IBD') with at least 100 informative positions (19695/19701 pairs remaining). The accuracy of the classification of related ($IBD \geq 0.5$) and unrelated ($IBD < 0.5$) isolates from barcode-IBD was assessed using genome-IBD as the gold standard. Among the 364 pairs of samples with a barcode-IBD above 0.5, 314 were indeed related (genome-IBD above 0.5) while 50 were actually not related (genome-IBD below 0.5), although 24 showed genome-IBD value between 0.4 to 0.5. To minimise the proportion of pairs of samples falsely related or unrelated, the 50 pairs of isolates (14 % of 364 related pairs) with a barcode-IBD above 0.5 and a genome-IBD below 0.5 were considered unrelated, and conversely, the 57 pairs of isolates (0.3 % of 18627 unrelated pairs) with a barcode-IBD below 0.5 and a genome-IBD above 0.5 were considered related. Additionally, the genome-IBD was used to classify barcodes as related or unrelated when the barcode-IBD was not available (707 pairs).

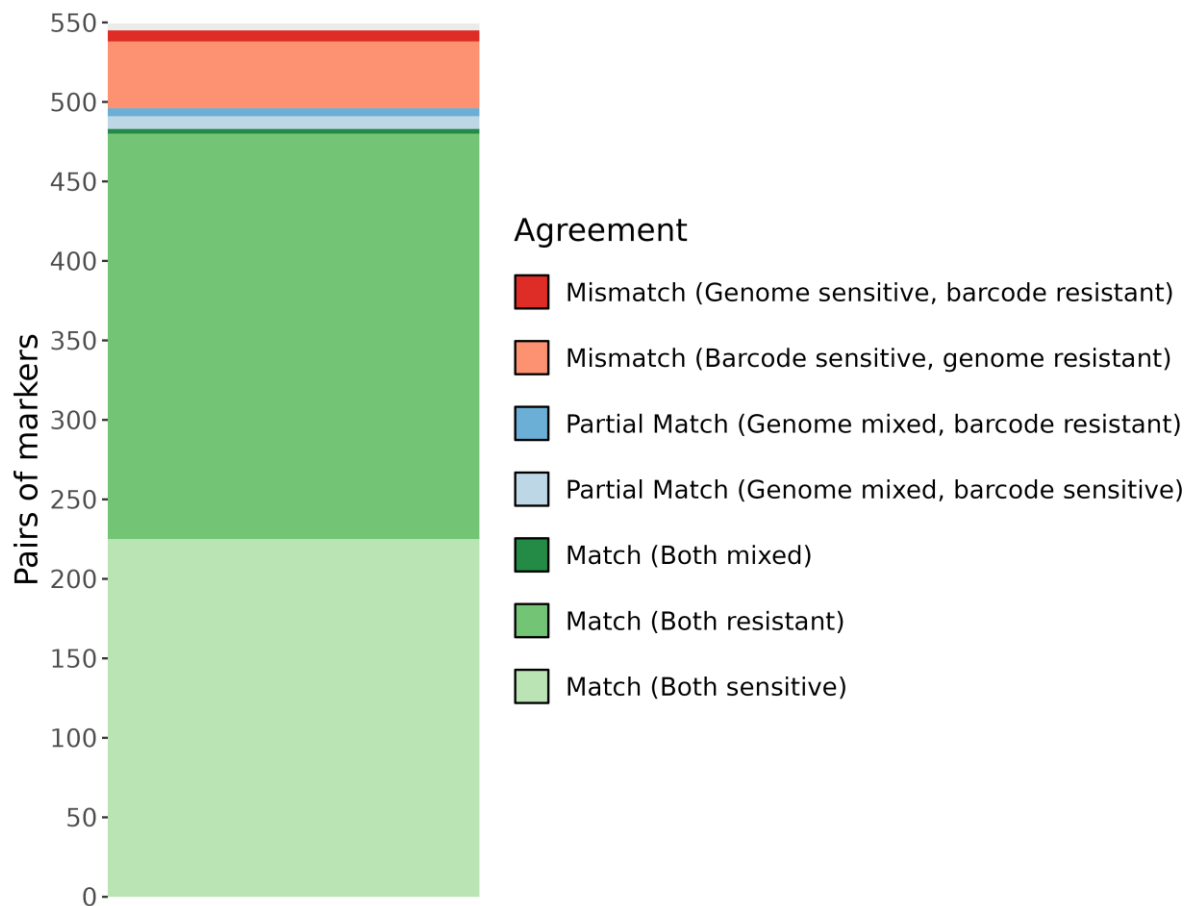


Figure S7: Agreement between pairs of haplotypes obtained both by molecular genotyping ('barcodes') and from Whole Genome Sequence calling ('genomes'). Six drug resistance markers were screened, *aat1* (PF3D7_0629500) S528L, *crt* (PF3D7_0709000) K76T, *dhfr* (PF3D7_0417200) S108N, *dhps* (PF3D7_0810800) A437G, *kelch13* (PF3D7_1343700) C580Y and *mdr1* (PF3D7_0523000) N86Y. Drug resistance haplotypes were obtained in 428 barcodes (1261 haplotypes) and 200 genomes (1006 haplotypes) for a merged total of 438 isolates (1722 haplotypes). The vast majority (89 %) of the 545 pairs of haplotypes obtained with the two methods are identical, which is an evidence that both methods are accurate. While there are multiple partial matches (one haplotype is mixed according to a method and either sensitive or resistant by the other) with mixed haplotypes called from genomes, no partial match with mixed haplotypes called from barcodes were found, showing that whole genome sequencing is more sensitive than molecular genotyping.

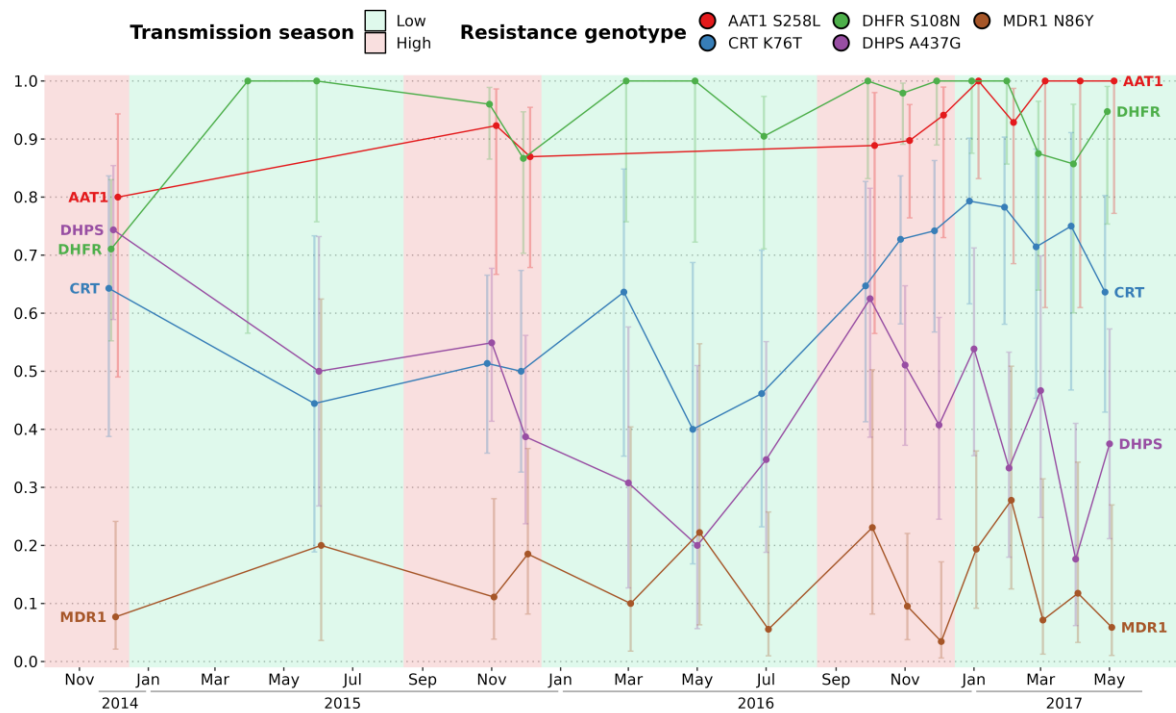


Figure S8: Prevalence of 5 drug resistance-related haplotypes for each time point with at least 10 observations over the study time period. The 5 variants induce non-synonymous changes in *aat1* (S528L), *crt* (K76T), *dhfr* (S108N), *dhps* (A437G) and *mdr1* (N86Y) which are known to reduce the susceptibility to multiple antimalarials. The prevalence of the kelch13 C580Y mutation was null and not shown here. There was no consistent change in allele frequency associated with transmission season. Furthermore, the proportions of all variants remained stable between the start and end of the study period. Error bars represent the 95 % Wilson's confidence intervals.

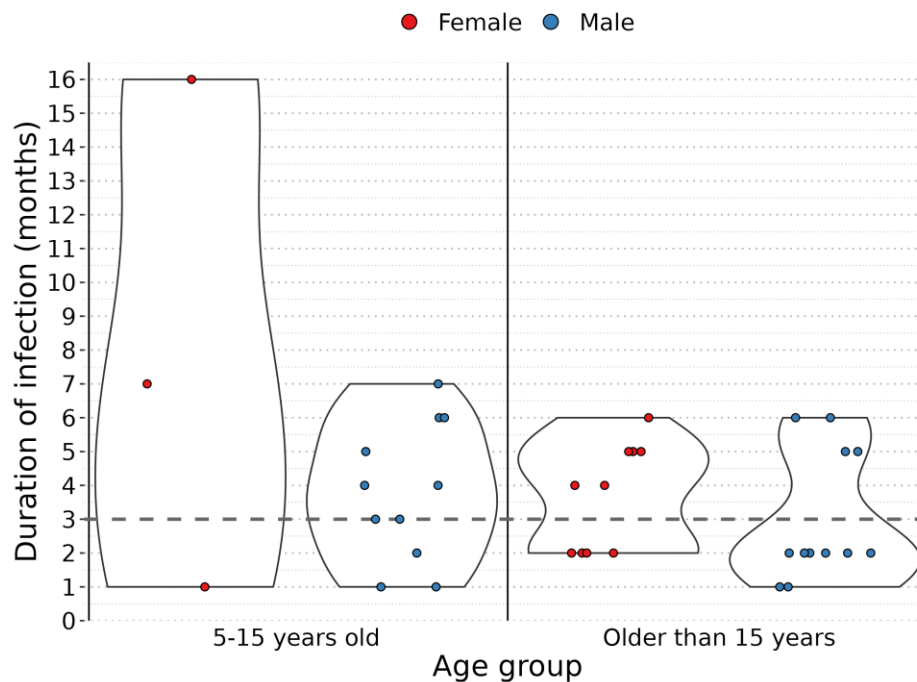


Figure S9: Durations of infection by the same parasite strain, grouped by host age and coloured by gender. The number of short (less than 3 months) and long infections (more than 3 months) were compared between genders (female versus male) and age groups ('5-15 years old' versus 'older than 15 years'). No significant difference of the duration of infection was found between genders, which had very similar percentages of short infections with 38 % and 48 % of infections for female and male respectively ($\chi^2 = 0.30$, p-value > 0.5). Although long infections were more common in the '5-15 years old' age group (71 % of all infections) compared to the 'older than 15 years age' group (45 % of all infections), this was not statistically significant ($\chi^2 = 2.34$, p-value < 0.13), potentially due to relatively small sample size.