

1 **Supplementary material for *Quantifying infectious disease epidemic risks: A practical***
2 ***approach for seasonal pathogens by Kaye et al.***

3
4 **Supplementary Text**

5 **Text S1.1 – Parameters of the Chikungunya transmission model**

6 The parameters of the model of Chikungunya virus transmission are listed in Table S1.1,
7 along with the assumed parameter values. For the temperature-dependent parameter
8 values, a functional form is provided (based on the temperature, T).

9
10 **Table S1.1. Parameters of the *Ae. albopictus* ecological model and the Chikungunya transmission model**
11 **(systems of equations (3) and (6) in the main text).** Graphical representations of parameters that are
12 temperature-dependent are shown in Poletti *et al.* [1]. Relevant references from which the assumed values and
13 functional forms were obtained are shown in the final column.

Parameter	Interpretation	Value	Units	Reference
n_E	Average number of eggs per adult female oviposition	60	-	[1–3]
$d_E(T)$	Development rate from egg to larva	$\frac{1}{6.9 - 4e^{-\left(\frac{T-20}{4.1}\right)^2}}$	days ⁻¹	[1–3]
$d_L(T)$	Development rate from larva to pupa	$\frac{1}{0.12T^2 - 6.6T + 98}$	days ⁻¹	[1–3]
$d_P(T)$	Development rate from pupa to adult	$\frac{1}{0.027T^2 - 1.7T + 27.7}$	days ⁻¹	[1–3]
$d_V(T)$	Rate of egg deposition for female adults	$\frac{1}{0.046T^2 - 2.77T + 45.3}$	days ⁻¹	[1–3]
$m_E(T)$	Egg mortality rate	$506 - 506e^{-\left(\frac{T-25}{27.3}\right)^6}$	days ⁻¹	[1–3]
$m_L(T)$	Larval mortality rate	$0.029 + 858e^{T-43.4}$	days ⁻¹	[1–3]
$m_P(T)$	Pupal mortality rate	$0.021 + 37e^{T-36.8}$	days ⁻¹	[1–3]
$m_V(T)$	Adult vector mortality rate	$0.031 + 95820e^{T-50.4}$	days ⁻¹	[1–3]
k	Adult vector biting rate	0.09	days ⁻¹	[1,2]
β_V	Probability of vector infection from a single blood meal from an infectious host	0.77	-	[2]

β_H	Probability of host infection from a single blood meal from an infectious vector	0.70	-	[2]
ω_V	Extrinsic incubation period	2.5	days	[2]
τ	Time until host recovery	4.5	days	[2]
a_s	Overcrowding term	44.5 (2014), 32.6 (2015)	-	[2]

14

15 **Text S1.2 - Supplementary details about the algorithms used for outbreak simulations**

16 **Algorithm 1 – Seasonal stochastic SIR model**

17 Two possible events can occur in the stochastic SIR model. These events, and the rates at
 18 which they occur, are shown in Table S1.2.

19 **Table S1.2. Possible events in the stochastic SIR model.**

<u>Event</u>	<u>Rate</u>
A randomly chosen susceptible individual becomes infected	$\frac{\beta(t)S(t)I(t)}{N}$
A randomly chosen infected individual is removed	$\gamma(t)I(t)$

20

21 A single realisation of the stochastic SIR model can be simulated using the following
 22 algorithm:

- 23 1. Set the initial time t and the values of $S(t)$, $I(t)$ and $R(t)$.
- 24 2. Steps 2-3 should be repeated while the outbreak is still ongoing (i.e. $I(t) > 0$) or
 25 until the user chooses to stop the simulation. Calculate the time of the next event,
 26 $t + \tau$, using the expression

27
$$\int_t^{t+\tau} \frac{\beta(s)S(s)I(s)}{N} + \gamma(s)I(s)ds = -\ln(r_1),$$

28 where r_1 is a random number sampled from a uniform distribution on $(0,1)$.

29 3. Determine whether the next event is an infection event or a removal event. To do
 30 this, sample a second random number (r_2) from a uniform distribution on (0,1). If

$$31 \quad r_2 < \frac{\beta(t + \tau)S(t)I(t)/N}{\beta(t + \tau)S(t)I(t)/N + \gamma(t + \tau)I(t)},$$

32 then the next event is an infection event; set $S(t + \tau) = S(t) - 1$, $I(t + \tau) = I(t) +$
 33 1 , and $R(t + \tau) = R(t)$. If instead the inequality above is not satisfied, then the next
 34 event is a removal event; set $S(t + \tau) = S(t)$, $I(t + \tau) = I(t) - 1$, and $R(t + \tau) =$
 35 $R(t) + 1$. Update the current time, t .

36 Algorithm 2 – Seasonal stochastic Chikungunya transmission model

37 As described in the main text, to simulate the Chikungunya transmission model, we begin by
 38 solving the deterministic ecological model (system of equations (3) in the main text)
 39 numerically. Following the approach of Guzzetta *et al.* [2,4], the ecological model is
 40 initialised on 1st April of the respective years with 10,000 eggs and no individuals in any
 41 other compartment. We then fit equation (5) in the main text to the output from system of
 42 equations (3) to obtain a time series describing the number of adult female vectors each day,
 43 $N_V(t)$.

44 We then proceed by simulating the epidemiological component of the system (the
 45 analogous stochastic model to system of equations (6) in the main text). Within each day,
 46 transmission parameter values are assumed to remain constant. Seven different types of
 47 event can occur in the simulations within each day (Table S1.3).

48 **Table S1.3. Possible events within each day in the stochastic Chikungunya transmission model.**

<u>Event</u>	<u>Rate</u>
A randomly chosen susceptible vector dies	$m_V(T(t))S_V$
A randomly chosen susceptible vector becomes exposed	$k\beta_V \frac{S_V I_H}{N}$

A randomly chosen exposed vector dies	$m_V(T(t))E_V$
A randomly chosen exposed vector becomes infectious	$\frac{1}{\omega_V}E_V$
A randomly chosen infectious vector dies	$m_V(T(t))I_V$
A randomly chosen susceptible host becomes infectious	$k\beta_H \frac{S_H I_V}{N}$
A randomly chosen infectious host is removed	$\frac{1}{\tau}I_H$

49

50 The stochastic host-vector model is then simulated using the following steps:

51 1. Set the initial time t , and the values of $S_V(t)$, $E_V(t)$, $I_V(t)$, $S_H(t)$, $I_H(t)$ and $R_H(t)$.

52 $S_V(t)$ is set to be $N_V(t)$ (from the deterministic ecological model), $S_H(t)$ is set to be
53 the number of people living within the simulation area, and $I_H(t)$ is set to be one
54 (this is the initial infection). All other compartments are initialised with zero
55 individuals.

56 2. Steps 2-3 should be repeated while the outbreak is still ongoing (i.e. $E_V + I_V + I_H >$
57 0) or until the user chooses to stop the simulation. Propose the next event time, $t +$
58 τ , using the expression

59
$$\tau = -\frac{\ln r_1}{\theta(t)},$$

60 where $\theta(t) = m_V(T(t))S_V(t) + k\beta_V \frac{S_V(t)I_H(t)}{N} + m_V(T(t))E_V(t) + \frac{1}{\omega_V}E_V(t) +$
61 $m_V(T(t))I_V(t) + k\beta_H \frac{S_H(t)I_V(t)}{N} + \frac{1}{\tau}I_H(t)$ and r_1 is a random number sampled from a
62 uniform distribution on $(0,1)$.

63 3. Then, do one of the following, depending on the proposed next event time $(t + \tau)$:

64 • If this proposed time $t + \tau$ is not in the same day as time t (i.e. if $[t + \tau] - [t] >$
65 0), then do not perform any event and instead update the time to be the end of the
66 original day (i.e. update t to $[t]$). Update the vector population size according to the
67 deterministic ecological model (i.e. $N_V(t)$). Let $\sigma(t) = N_V(t) - S_V(t) - E_V(t) -$

78 $I_V(t)$. If $\sigma(t) > 0$, then add $\sigma(t)$ individuals to $S_V(t)$. If $\sigma(t) < 0$, then remove
79 $-\sigma(t)$ individuals from $S_V(t)$, $E_V(t)$ or $I_V(t)$ (with each vector to remove chosen
80 uniformly at random from those compartments).

81 • If instead the proposed time $t + \tau$ is in the same day as t (i.e. if $\lfloor t + \tau \rfloor - \lfloor t \rfloor = 0$),
82 do not update the vector population size. Determine the type of the event occurring
83 at time $t + \tau$ (since transmission parameters are assumed to be constant within each
84 day, this is equivalent to deploying the Gillespie direct method within each day). To
85 do this, define $\theta_i(t)$ to be the sum of the first i terms of $\theta(t)$, so that $\theta_1(t) =$
86 $m_V(T(t))S_V(t)$, $\theta_2(t) = m_V(T(t))S_V(t) + k\beta_V \frac{S_V(t)I_H(t)}{N}$, and so on. Then, sample a
87 second number (r_2) from a uniform distribution on $(0,1)$, and perform one of the
88 following events.

89 - If $r_2 < \frac{\theta_1(t)}{\theta(t)}$, then the next event is the death of a susceptible vector; set

90 $S_V(t + \tau) = S_V(t) - 1$, $E_V(t + \tau) = E_V(t)$, $I_V(t + \tau) = I_V(t)$, $S_H(t + \tau) =$
91 $S_H(t)$, $I_H(t + \tau) = I_H(t)$, and $R_H(t + \tau) = R_H(t)$.

92 - If instead, $\frac{\theta_1(t)}{\theta(t)} < r_2 < \frac{\theta_2(t)}{\theta(t)}$, then the next event is a susceptible vector

93 becoming exposed; $S_V(t + \tau) = S_V(t) - 1$, $E_V(t + \tau) = E_V(t) + 1$, $I_V(t + \tau) =$
94 $I_V(t)$, $S_H(t + \tau) = S_H(t)$, $I_H(t + \tau) = I_H(t)$, and $R_H(t + \tau) = R_H(t)$.

95 - If instead, $\frac{\theta_2(t)}{\theta(t)} < r_2 < \frac{\theta_3(t)}{\theta(t)}$, then the next event is the death of an exposed

96 vector; $S_V(t + \tau) = S_V(t)$, $E_V(t + \tau) = E_V(t) - 1$, $I_V(t + \tau) = I_V(t)$,

97 $S_H(t + \tau) = S_H(t)$, $I_H(t + \tau) = I_H(t)$, and $R_H(t + \tau) = R_H(t)$.

98 - If instead, $\frac{\theta_3(t)}{\theta(t)} < r_2 < \frac{\theta_4(t)}{\theta(t)}$, then the next event is the transition of an exposed

99 vector into an infectious vector; set $S_V(t + \tau) = S_V(t)$, $E_V(t + \tau) = E_V(t) - 1$,

90 $I_V(t + \tau) = I_V(t) + 1, S_H(t + \tau) = S_H(t), I_H(t + \tau) = I_H(t),$ and $R_H(t + \tau) =$
91 $R_H(t).$

92 - If instead, $\frac{\theta_4(t)}{\theta(t)} < r_2 < \frac{\theta_5(t)}{\theta(t)},$ then the next event is the death of an infectious
93 vector; set $S_V(t + \tau) = S_V(t), E_V(t + \tau) = E_V(t), I_V(t + \tau) = I_V(t) - 1,$
94 $S_H(t + \tau) = S_H(t), I_H(t + \tau) = I_H(t),$ and $R_H(t + \tau) = R_H(t).$

95 - If instead, $\frac{\theta_5(t)}{\theta(t)} < r_2 < \frac{\theta_6(t)}{\theta(t)},$ then the next event is the infection of a susceptible
96 host; set $S_V(t + \tau) = S_V(t), E_V(t + \tau) = E_V(t), I_V(t + \tau) = I_V(t), S_H(t + \tau) =$
97 $S_H(t) - 1, I_H(t + \tau) = I_H(t) + 1,$ and $R_H(t + \tau) = R_H(t).$

98 - If instead, $\frac{\theta_6(t)}{\theta(t)} < r_2 < 1,$ then the next event is the removal of an infectious
99 host; set $S_V(t + \tau) = S_V(t), E_V(t + \tau) = E_V(t), I_V(t + \tau) = I_V(t), S_H(t + \tau) =$
100 $S_H(t), I_H(t + \tau) = I_H(t) - 1,$ and $R_H(t + \tau) = R_H(t) + 1.$

101 Then update the current time, t (i.e. set t to be $t + \tau$).

102

103 **Text S1.3 – Derivation of the CER for the host-vector model**

104 We derive the CER for the host-vector model, considering a scenario in which a single
105 infectious host enters the population at time $t = t_0$. To do this, we denote the probability of
106 a major outbreak failing to occur starting from i infectious hosts, j exposed vectors and k
107 infectious vectors in the population at time $t = t_0$ by $q_{ijk}(t_0).$

108 We begin by assuming that there is one infectious host and no exposed or infectious vectors
109 in the population in order to write down an equation for the temporal evolution of q_{100} . We
110 then consider the possible events in the next Δt months (i.e. the time interval $[t_0, t_0 + \Delta t]$),
111 where Δt represents a very short time period so that at most a single event is possible. In

112 that time period, the probability that a vector is infected (i.e. transitions from the
 113 susceptible compartment to the exposed compartment) is approximately $k\beta_V \frac{S_V I_H}{N} \Delta t$; the
 114 probability that the infectious host recovers is approximately $\frac{1}{\tau} \Delta t$; and the probability that
 115 no event occurs is approximately $1 - k\beta_V \frac{S_V I_H}{N} \Delta t - \frac{1}{\tau} \Delta t$. Applying the law of total
 116 probability gives

$$\begin{aligned}
 117 \quad q_{100}(t_0) &= \text{Prob}(\text{vector infection event occurs in } [t_0, t_0 + \Delta t]) \\
 118 &\quad \times \text{Prob}(\text{no major outbreak} \mid \text{vector infection event occurs in } [t_0, t_0 + \Delta t]) \\
 119 &\quad + \text{Prob}(\text{host recovery event occurs in } [t_0, t_0 + \Delta t]) \\
 120 &\quad \times \text{Prob}(\text{no major outbreak} \mid \text{host recovery event occurs in } [t_0, t_0 + \Delta t]) \\
 121 &\quad + \text{Prob}(\text{no event occurs in } [t_0, t_0 + \Delta t]) \\
 122 &\quad \times \text{Prob}(\text{no major outbreak} \mid \text{no event occurs in } [t_0, t_0 + \Delta t]) \\
 123 &= k\beta_V \frac{S_V I_H}{N} \Delta t q_{110}(t_0 + \Delta t) + \frac{1}{\tau} \Delta t q_{000}(t_0 + \Delta t) \\
 124 &\quad + \left(1 - k\beta_V \frac{S_V I_H}{N} \Delta t - \frac{1}{\tau} \Delta t\right) q_{100}(t_0 + \Delta t).
 \end{aligned}$$

125 Making the assumption that infection lineages are independent (so that $q_{110}(t_0 + \Delta t) =$
 126 $q_{100}(t_0 + \Delta t)q_{010}(t_0 + \Delta t)$), and noting that $q_{000}(t_0 + \Delta t) = 1$, $S_V = N_V$ and $I_H = 1$ at the
 127 beginning of the outbreak, then rearranging this expression and taking the limit $\Delta t \rightarrow 0$
 128 gives

$$129 \quad \frac{dq_{100}(t_0)}{dt_0} = -k\beta_V \frac{N_V}{N} q_{100}(t_0)q_{010}(t_0) - \frac{1}{\tau} + \left(k\beta_V \frac{N_V}{N} + \frac{1}{\tau}\right) q_{100}(t_0).$$

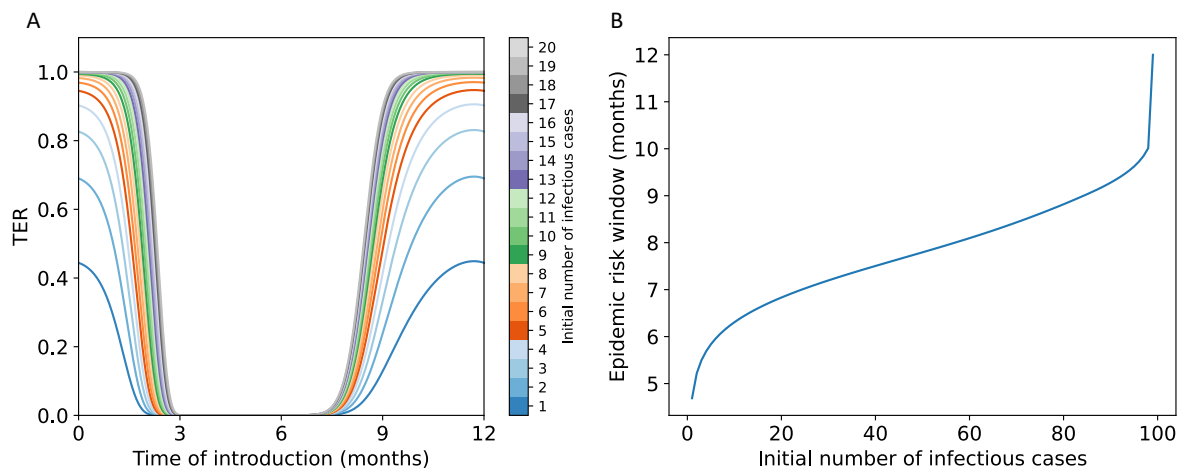
130 Denoting the probability of a major outbreak starting from i infectious hosts, j exposed
 131 vectors and k infectious vectors in the population at time $t = t_0$ by $p_{ijk}(t_0) = 1 - q_{ijk}(t_0)$
 132 and substituting this into the above equation gives the first equation in system of equations

133 (9) in the main text. An analogous approach (this time for q_{010} and q_{001} ; i.e. starting from
134 either a single exposed vector or from a single infectious vector) is used to derive the
135 remaining two equations in system of equations (9) in the main text.

136

137

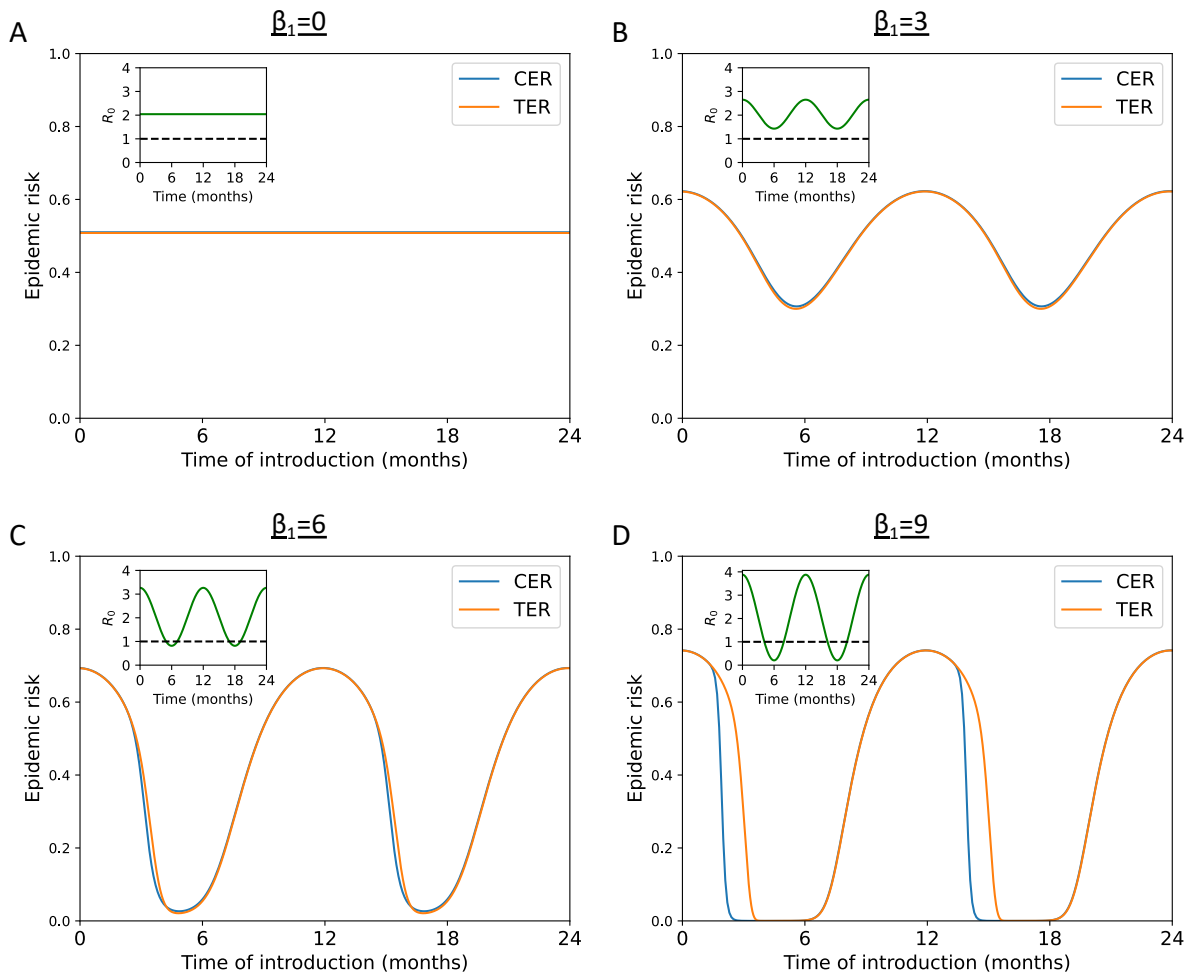
Supplementary Figures



138

139 **Figure S1.1. Dependence of the TER on the initial number of infected individuals, for the stochastic SIR model**
140 **with seasonal transmission.** A. The TER for different initial numbers of infectious individuals (obtained by
141 solving systems of equations (11) in the main text numerically). B. The duration of the year for which the TER
142 exceeds $z = 0.1$, for different initial numbers of infectious individuals. In both panels, a threshold of $M = 100$
143 was used when computing the TER and the overall population size was assumed to be $N = 1,000$ individuals.
144 Parameter values used: $\beta_0 = 4$, $\beta_1 = 5$ and $\gamma = 4.9 \text{ month}^{-1}$.

145



146

147

Figure S1.2. Comparison between calculated values of the CER and TER for the stochastic SIR model with

148

seasonal transmission, for a range of values of β_1 . A. The CER (equation (8) in the main text – blue line) and

149

the TER (obtained by solving systems of equations (11) in the main text numerically – orange line) when $\beta_0 =$

150

10 , $\beta_1 = 0$ and $\gamma = 4.9 \text{ month}^{-1}$. B. Analogous results to panel A, but with $\beta_1 = 3$. C. Analogous results to

151

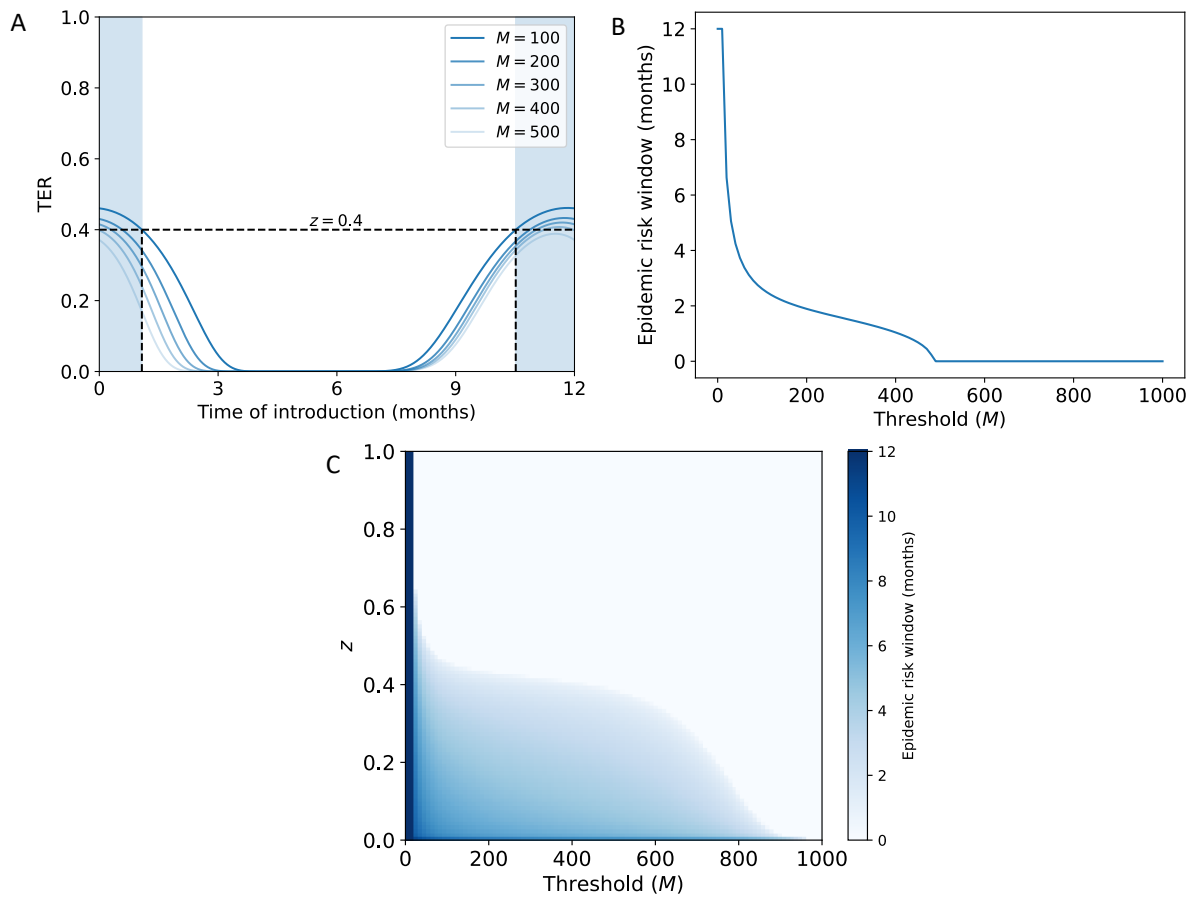
panel A, but with $\beta_1 = 6$. D. Analogous results to panel A, but with $\beta_1 = 9$. In all panels, a threshold of $M =$

152

100 was used when computing the TER and the overall population size was assumed to be $N = 1,000$

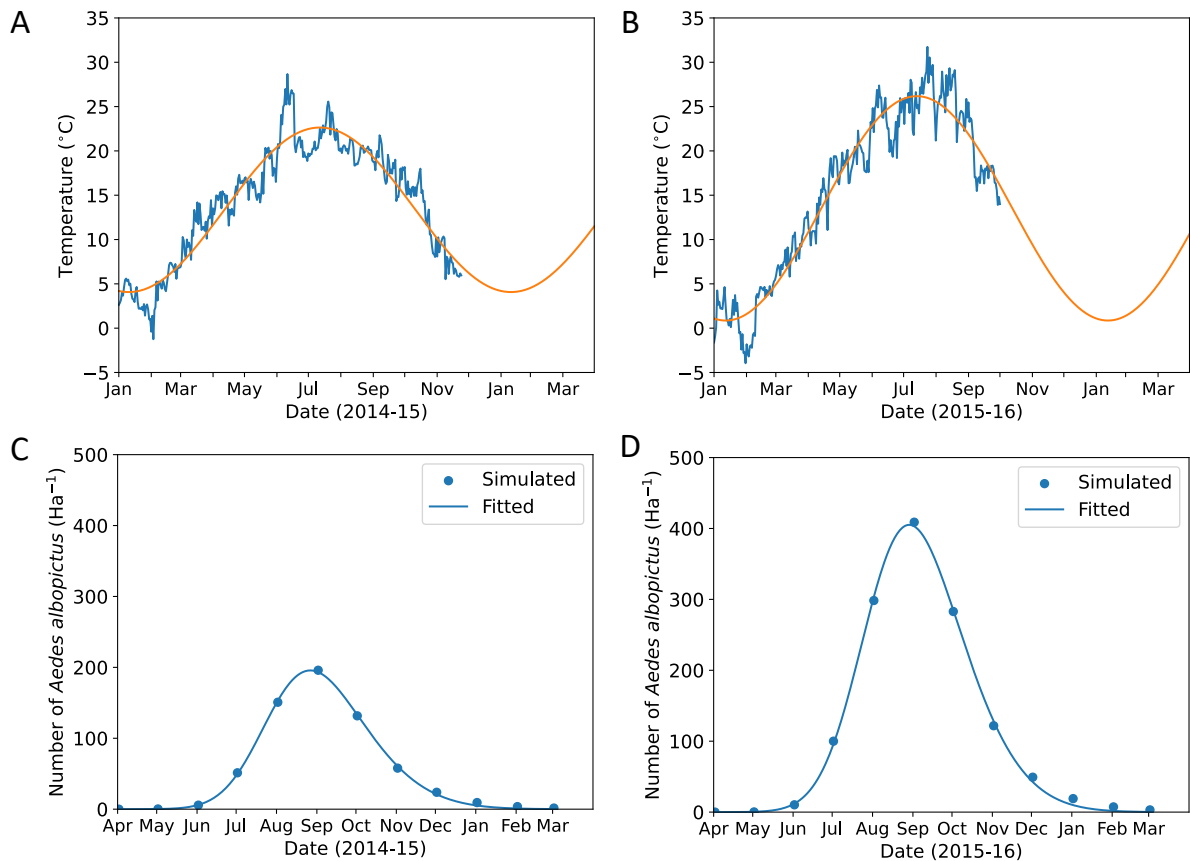
153

individuals. In all panels, the inset shows $R_0(t) = \beta(t)/\gamma(t)$ as a function of t .



154

155 **Figure S1.3. Proportion of the year for which the TER exceeds z in the stochastic SIR model with seasonal**
 156 **transmission, for a range of values of M and z .** A. The TER (obtained by solving systems of equations (11) in
 157 the main text numerically) for a range of different values of the threshold number of infections, M . The blue
 158 shaded region shows the period of the year for which the TER exceeds $z = 0.4$ when $M = 100$. B. The duration
 159 of the year for which the TER exceeds $z = 0.4$, shown as a function of M . C. Heatmap indicating the duration of
 160 the year for which the TER exceeds z , shown for a range of values of M and z . In all panels, values of $\beta_0 = 4$,
 161 $\beta_1 = 5$ and $\gamma = 4.9 \text{ month}^{-1}$ are used. The overall population size was assumed to be $N = 1,000$ individuals.



162

163 **Figure S1.4. Temperature and inferred vector density in Feltre, northern Italy, in 2014 and 2015.** A. Daily
 164 mean temperature in Feltre in 2014 (from MODIS satellite Land Surface Temperature measurements as
 165 described in [4]; blue line) and fitted temperature values obtained by fitting equation (4) in the main text to
 166 those data (orange line). B. Analogous to panel A, but using temperature data from 2015. C. Monthly number
 167 of adult female vectors per hectare in 2014 (and early 2015) obtained by solving system of equations (3) in the
 168 main text numerically based on the fitted temperature values in panel A (blue dots), and inferred number of
 169 adult female vectors per hectare obtained by fitting equation (5) in the main text to the monthly values (blue
 170 line). The ecological model is initialised at the beginning of April 2014, following the approach of Guzzetta *et al.*
 171 [4]. D. Analogous to panel C, but for 2015 (and early 2016), based on the fitted temperature values in panel B.

172 **References**

- 173 1. Poletti P, Messeri G, Ajelli M, Vallorani R, Rizzo C, Merler S. Transmission potential of
174 chikungunya virus and control measures: The case of Italy. PLoS One. 2011;6.
175 doi:10.1371/journal.pone.0018860
- 176 2. Guzzetta G, Trentini F, Poletti P, Baldacchino FA, Montarsi F, Capelli G, et al.
177 Effectiveness and economic assessment of routine larviciding for prevention of
178 chikungunya and dengue in temperate urban settings in Europe. PLoS Negl Trop Dis.
179 2017;11. doi:10.1371/journal.pntd.0005918
- 180 3. Delatte H, Gimonneau G, Triboire A, Fontenille D. Influence of temperature on
181 immature development, survival, longevity, fecundity, and gonotrophic cycles of
182 *Aedes albopictus*, vector of chikungunya and dengue in the Indian Ocean. J Med
183 Entomol. 2009;46: 33–41. doi:10.1603/033.046.0105
- 184 4. Guzzetta G, Montarsi F, Baldacchino FA, Metz M, Capelli G, Rizzoli A, et al. Potential
185 risk of dengue and chikungunya outbreaks in Northern Italy based on a population
186 model of *Aedes albopictus* (Diptera: Culicidae). PLoS Negl Trop Dis. 2016;10.
187 doi:10.1371/journal.pntd.0004762

188