

Supplementary Material

Prospective Registration of Trials in Rheumatology: Where we are, why, and how we could get better.

Denis MONGIN¹ PhD, Diana BUITRAGO-GARCIA¹ PhD, Sami CAPDEROU¹ PhD, Thomas AGORITSAS^{2,3,4}MD, PhD, Cem GABAY¹ MD, PhD, Delphine Sophie COURVOISIER¹PhD, Michele IUDICI¹ MD, PhD, MPH.

Supplementary Table 1. List of rheumatology journals Included in the study	2
Supplementary Table 2. List of included journals in general medicine	4
Supplementary Table 3. Characteristics of RCTs stratified by registration status	10
Supplementary Table 4. Proportion of RCTs published per year Prospective, Retrospective, or Unregistered, Stratified by ICMJE-compliant Journals.....	12
Supplementary Table 5. Multivariable analysis considering the sub-group of interventions among non-pharmacological trials ^a	15
Supplementary Table 6. Multivariable analysis considering the conditions assessed in the included trials ^a	17
Supplementary Table 7. Characteristics of respondents and non-respondents that retrospectively registered RCTs and were invited to answer the study survey	19
Supplementary Table 8. Characteristics respondents and non-respondents that did not register RCTs and were invited to answer the study survey	21
Supplementary Appendix 1. Search strategy for rheumatology journals	4
Supplementary Appendix 2. Search strategy for general medicine journals	4
Supplementary Appendix 3. Regex codes to retrieve TRN during the data extraction phase	5
Supplementary Appendix 4. Data extraction	7
Supplementary Appendix 5. Definitions of sub-group of trials grouped under non-pharmacological interventions	8
Supplementary Appendix 6. Survey sent to corresponding authors and/or trial contact authors of unregistered trials	9
Supplementary Figure 1. Logit of the proportion of RCT with prospective registration as a function of impact factor (A) and of sample size (B). Errors bars correspond to the logit of the 95% confidence interval calculated with the Wilsons core interval.....	14

Supplementary Table 1. List of rheumatology journals Included in the study

Acta Reumatológica Portuguesa
Advances In Rheumatology
Aktuelle Rheumatologie
Annals of the Rheumatic Diseases
Archives Of Rheumatology
BMC Musculoskeletal Disorders
Clinical And Experimental Rheumatology
Clinical Rheumatology
Current Opinion in Rheumatology
Current Rheumatology Reports
Current Rheumatology Reviews
Egyptian Rheumatologist
European Journal of Rheumatology
Indian Journal of Rheumatology
International Journal of Rheumatic Diseases
International Journal of Rheumatology
Journal Of Clinical Rheumatology
Joint Bone Spine
Journal Of Rheumatic Diseases
Journal Of Rheumatology
Journal Of Scleroderma and Related Disorders
Lancet Rheumatology
Lupus
Lupus Science & Medicine
Modern Rheumatology
Musculoskeletal Care
Nature Reviews Rheumatology
Open Access Rheumatology-Research and Reviews
Osteoarthritis And Cartilage
Pediatric Rheumatology
Arthritis Care & Research
Best Practice and Research In Clinical Rheumatology
Reumatismo
Reumatologia Clinica
Revista Cubana De Reumatología
Rheumatic Disease Clinics of North America
Arthritis And Rheumatology
Rheumatology
Rheumatology Advances in Practice
Rheumatology And Therapy
Rheumatology International
RMD Open

Scandinavian Journal of Rheumatology
Seminars In Arthritis and Rheumatism
Therapeutic Advances in Musculoskeletal Disease
Arthritis Research and Therapy
Turk Osteoporoz Dergisi
Zeitschrift Fur Rheumatologie
Arthritis & Rheumatism

Supplementary Table 2. List of included journals in general medicine

The Lancet
New England Journal of Medicine
JAMA
BMJ
Annals of Internal Medicine

Supplementary Appendix 1. Search strategy for rheumatology journals

"(0303-464X[IS] OR 2523-3106[IS] OR 0341-051X[IS] OR 0003-4967[IS] OR 2148-5046[IS] OR 1471-2474[IS] OR 0392-856X[IS] OR 0770-3198[IS] OR 1040-8711[IS] OR 1523-3774[IS] OR 1573-3971[IS] OR 1110-1164[IS] OR 2147-9720[IS] OR 0973-3698[IS] OR 1756-1841[IS] OR 1687-9260[IS] OR 1076-1608[IS] OR 1297-319X[IS] OR 2093-940X[IS] OR 0315-162X[IS] OR 2397-1983[IS] OR 2665-9913[IS] OR 0961-2033[IS] OR 2053-8790[IS] OR 1439-7595[IS] OR 1478-2189[IS] OR 1759-4790[IS] OR 1179-156X[IS] OR 1063-4584[IS] OR 1546-0096[IS] OR 2151-464X[IS] OR 1532-1770[IS] OR 0048-7449[IS] OR 1699-258X[IS] OR 1606-5581[IS] OR 0889-857X[IS] OR 2326-5191[IS] OR 1462-0324[IS] OR 2514-1775[IS] OR 2198-6576[IS] OR 0172-8172[IS] OR 2056-5933[IS] OR 0300-9742[IS] OR 0049-0172[IS] OR 1759-720X[IS] OR 1478-6354[IS] OR 2147-2653[IS] OR 0340-1855[IS] OR 0004-3591[IS]) AND 2009:2022 [DP] AND (trial[TI] OR rct[TI]) AND (randomized[TI] OR randomised[TI]) NOT (non-randomized[TI] OR non-randomised[TI] OR nonrandomized[TI] OR nonrandomised[TI]) NOT protocol[TI] NOT secondary analysis[TI] NOT (systematic-review[TI] OR meta-analysis[TI]) NOT (design[TI] AND methodology[TI])"

Supplementary Appendix 2. Search strategy for general medicine journals

"(1474-547X[IS] OR 1533-4406[IS] OR 1538-3598[IS] OR 1756-1833[IS] OR 1539-3704[IS]) AND 2009:2022 [DP] AND (trial[TI] OR rct[TI]) AND (randomized[TI] OR randomised[TI]) NOT (non-randomized[TI] OR non-randomised[TI] OR nonrandomized[TI] OR nonrandomised[TI]) NOT protocol[TI] NOT secondary analysis[TI] NOT (systematic-review[TI] OR meta-analysis[TI]) NOT (design[TI] AND methodology[TI]) AND (Vasculitis[Mesh] OR Polychondritis, Relapsing[Mesh] OR Dermatomyositis[Mesh] OR Lupus Erythematosus, Systemic[Mesh] OR Mixed Connective Tissue Disease[Mesh] OR Rheumatic Diseases[Mesh] OR Polymyositis[Mesh] OR Arthritis, Rheumatoid[Mesh] OR Spondylarthritis[Mesh] OR Osteoarthritis[Mesh] OR Crystal Arthropathies[Mesh] OR gout[tiab] OR chondrocalc*[tiab] OR Wegener[tiab] OR churg-strauss[tiab] OR granulomatosis[tiab] OR polyangiitis[tiab] OR *angiitis[tiab] OR polyarteritis[tiab] OR Takayasu[tiab] OR Horton[tiab] OR aortitis[tiab] OR giant cell[tiab] OR polymyalgia[tiab] OR scleroderma[tiab] OR systemic sclerosis[tiab] OR lupus[tiab] OR sjogren[tiab] OR dermatomyositis[tiab] OR polymyositis[tiab] OR undifferentiated connective tissue[tiab] OR UCTD[tiab] OR mixed connective tissue[tiab] OR MCTD[tiab] OR behcet[tiab] OR cogan[tiab] OR Schoenlein-Henoch[tiab] OR rheumatoid[tiab] OR Still disease[tiab] OR osteoarthr*[tiab] OR spondyl*[tiab] OR reactive arthritis[tiab] OR psoriatic arthritis[tiab] OR arthrose[tiab] OR arthritis[tiab])"

Supplementary Appendix 3. Regex codes to retrieve TRN during the data extraction phase

The list of regex codes (Full regex code in the table below) was build using an extensive list of TRNs retrieved from the metadata of the complete PubMed citation record of 2022.

Shorter regex codes were also created to allow identifying ambiguous text patterns (e.g. misspelled TRN). If a potential ambiguous TRN was detected and not complete TRN was identified, the result was manually checked by two authors (SC, DM) for validation.

The TRN regex detection algorithm was tested against a list of 24,380 known pattern extracts from the metadata of the complete PubMed citation record of 2022 and yielded a sensitivity of 99,1%. The TRN not detected during this preliminary test had all syntax errors and were identified by the short regex code.

Registry Name	Databank	Full regex code	Short regex code
Australian New Zealand Clinical Trials Registry	ANZCTR	\bA[NZ]{0,}CTRN{0,}[-:]{0,}\s{0,}[0-9]{12,}	ACTR
Brazilian Clinical Trials Registry	ReBec	RBR.{0,1}[[A-z][0-9]]{5,6}	RBR
Clinical Research Information Service - South Korea	CRIS	KCT\-[0,][0-9]{7}	KCT
Clinicaltrials.gov	ClinicalTrials.gov	NCT[0-9]{8}	(?<![A-z])NCT
Clinical Trials Registry - India	CTRI	CTRI[/[0-9]]{13,}	IRCT
Clinical Trials Registry - India	CTRI	[0-9]{4}/[0-9]{2}/[0-9]{6}	IRCT
Cuban Public Registry of Clinical Trials	RPCEC	RPCEC[0-9]{8}	RPCE
EU Clinical Trials Register	EudraCT	EudraCT(- [0-9]){3,}	Eudra
EU Clinical Trials Register	EudraCT	EUDRACT(- [0-9]){3,}	EUDRA
EU Clinical Trials Register	EudraCT	EUCTR(- [0-9]){3,}	EUCT
EU Clinical Trials Register	EudraCT	(?<![A-Z])\b[0-9]{4}-A{0,1}[0-9]{5,6}.\{0,1\}[0-9]{2}	EudraCT
German Clinical Trials Register	DRKS	DRKS[0-9]{8}	DRKS
Iranian Registry of Clinical Trials	IRCT	IRCT[[A-z]][0-9]{12,15}	IRCT
International Standard Randomised Controlled Trial Number	ISRCTN	ISRCTN\s{0,1}:[0,1][0-9]{7,8}	ISRC
Japan Primary Registries Network	JPRN	JPRN(- [0-9]][A-z]){8,}	JPRN
Lebanese Clinical Trials Registry	LBCTR	LBCTR	LBCT
Thai Clinical Trials Registry	TCTR	TCTR\s{0,1}[0-9]{11}	TCTR
The Netherlands National Trial Register	NTR	NTR[\s-]{0,1}[0-9]{2,4}	(?<![A-z])NTR
The Netherlands National Trial Register	NTR	NL[0-9]{3,4}	(?<![A-z])NTR
Pan African Clinical Trial Registry	PACTR	PACTR\s{0,1}[0-9]{10,}	PACTR
Peruvian Clinical Trial Registry	REPEC	PER(- [0-9]){7}	PER
Sri Lanka Clinical Trials Registry	SLCTR	SLCTR/[0-9]{4}/[0-9]{3}	SLCTR
University hospital Medical Information Network	JPRN	UMIN[0-9]{9}	UMIN
Japanese Medical Association	JMA	JMA(- [A-z]][0-9]{8}	JMA

Japan Pharmaceutical Information Center)	JapicCTI	JapicCTI-[0-9]{6}	Japic
Chinese Clinical Trial Registry	ChiCTR	ChiCTR.{0,1}[A-z]{0,3}.{0,1}[0-9]{7,8}	ChiCTR
Chinese Clinical Trial Registry	ChiCTR	CHICTR.{0,1}[A-z]{0,3}.{0,1}[0-9]{7,8}	ChiCTR
Figshare	figshare	[0-9]{2}.[0-9]{4}/.{0,3}figshare.[0-9]{7,}	figshare
Dryad	Dryad	[0-9]{2}.[0-9]{4}/dryad.[][0-9][A-z]]{5,}	Dryad
Figshare	figshare	[0-9]{2}.[0-9]{4}/.{0,3}FIGSHARE.[0-9]{7,}	FIGSHARE
Hong Kong Clinical Trial Registry	HKUCTR	HKU{0,1}CTR-[0-9]{4}	HKCTR

Supplementary Appendix 4. Data extraction

From PubMed-Medline xml files we extracted the article title, PubMed ID, journal, abstract, Trial Registration Number when available, author list and affiliation, date of submission, date of publication. The corresponding full text was retrieved from the database or through the library at the University of Geneva.

The following data was retrieved from the WHO-ICTRP database for study with a TRN, and from full text for the others: planned sample size, disease or condition of the participants, participating countries, funding, date of registration, date of first enrolment, contact details, funding, and type of intervention (pharmacological or non-pharmacological). The type of intervention was determined independently by two authors (SC, DBG) following a list of predetermined categories (see eAppendix5), and disagreements were resolved by a third author (DM).

A study was considered industry-funded if any private company was involved in funding, appeared as sponsor, or was named explicitly in the published article acknowledgments. Impact factors of each journal and year were recovered from the Scimago Journal and Country Rank website(1). The information about the journal publicly following ICMJE recommendations at the date of publication was obtained from the list of journals reported on the ICMJE website (2). If the journal did not appear in the list, we conducted an online search to identify the journal's statement about following the ICJME recommendations and if a date of adoption was reported.

Information about countries of enrollment was dichotomized in a two-level factor variable: non-international if recruitment was done only in one country or international if more than one country of recruitment was described.

References

1. Scimago Journal & Country Rank [Internet]. [cited 2024 Mar 13]. Available from: <https://www.scimagojr.com/index.php>
2. ICMJE | Home [Internet]. [cited 2024 Mar 13]. Available from: <https://www.icmje.org/>

Supplementary Appendix 5. Definitions of sub-group of trials grouped under non-pharmacological interventions

Sub-Group	Definition
Behavioural	Interventions designed to affect the actions that individuals take regarding their health. It involves using behaviour analytic techniques to change, reduce or modify conducts in people.
Biological treatments	Interventions assessing the effect of blood components or cell therapies.
Delivery of health care services	Delivery of services within any a health system where patients receive the treatment and supplies.
Device	Interventions involving any instrument, apparatus, implement, machine, appliance, implant, reagent for in vitro use, software, material or other similar or related article, intended by the manufacturer to be used, alone or in combination for a medical purpose.
Education	Interventions that involved providing teaching, instruction or pedagogy activities to patients or other populations.
Exercise therapy	Interventions that assess the effect of sports or any physical training.
Food/plants/supplements	Any food, herbal or dietary supplements that are not classified as a drug.
Procedure	Interventions that involve any practice of a health practitioner that assesses a combination of special skills or abilities and may require drugs, devices, or both.
Surgical	Invasive interventions that require an incision, cutting into the skin, to access body tissue, organs, or other internal parts.
Wellness and spa	Interventions that assess the effectiveness of thermal baths, spas or massage therapies.
Other	Other interventions that do not fit into the former categories

Supplementary Appendix 6. Survey sent to corresponding authors and/or trial contact authors of unregistered trials

Trial registration practices

Study author	Article title
To the best our knowledge, the clinical trials reported in your article has not been registered in a WHO associated registry.	<input type="radio"/> The clinical trial has not been registered <input type="radio"/> The clinical trial has been registered in a WHO associated registry <input type="radio"/> The clinical trial has been registered in another registry <input type="radio"/> The clinical trial registry started before 2005 <input type="radio"/> The article does not report the findings of a clinical trial
Please specify the registration number of your trial	-----
Why was your study not registered	<input type="checkbox"/> We were not aware of the registration requirement. <input type="checkbox"/> We did not think registration was important. <input type="checkbox"/> We did not have enough time. <input type="checkbox"/> We knew it was a requirement but forgot to do it. <input type="checkbox"/> We thought the registration requirement only applied to industry funded trials. <input type="checkbox"/> We thought the registration requirement only applied to drug-related trials. <input type="checkbox"/> We did not realize that our study meets the definition of a clinical trial. <input type="checkbox"/> Other reasons
Please specify why you're your study was not registered	-----
Please tick any factors that would have helped you to register your study	<input type="checkbox"/> Registration number is required on the ethics form <input type="checkbox"/> Having ethics submission automatically uploaded a clinical trial registry <input type="checkbox"/> Having registration on a checklist provided by ethics committee or other regulatory body/other <input type="checkbox"/> Having it included in my organization's procedures manual <input type="checkbox"/> Registration required by journals <input type="checkbox"/> Other
Please specify a factor that would have helped you to register your study	

Supplementary Table 3. Characteristics of RCTs stratified by registration status

Variable	Category	Not Registered No. (%)	Retrospective No. (%)	Prospective No. (%)	P value	% missing
Number of studies		130	323	640		
Continent	Europe	39 (31.2)	142 (45.2)	215 (34.5)	<0.001	2.7
	Asia	64 (51.2)	85 (27.1)	114 (18.3)		
	North America	10 (8.0)	38 (12.1)	95 (15.2)		
	Transcontinental	1 (0.8)	11 (3.5)	114 (18.3)		
	Oceania	3 (2.4)	10 (3.2)	68 (10.9)		
	South America	5 (4.0)	22 (7.0)	16 (2.6)		
	Africa	3 (2.4)	6 (1.9)	2 (0.3)		
International	No	119 (95.2)	287 (91.4)	466 (74.7)	<0.001	2.7
	Yes	6 (4.8)	27 (8.6)	158 (25.3)		
Funding	Non-industry	58 (63.7)	231 (71.7)	343 (53.6)	<0.001	3.7
	Industry	33 (36.3)	91 (28.3)	297 (46.4)		
Number of authors		7.35 (4.83)	8.54 (5.43)	11.25 (6.94)	<0.001	0.0
Sample Size		64.00 [45.00, 115.00]	90.00 [59.50, 191.00]	148.00 [76.00, 325.25]	<0.001	0.0
ICMJE^a	0	97 (74.6)	201 (62.2)	233 (36.4)	<0.001	0.0
	1	33 (25.4)	122 (37.8)	407 (63.6)		
Impact Factor		2.25 [1.71, 3.34]	2.54 [2.20, 4.67]	4.52 [2.52, 7.60]	<0.001	0.1
Delay (median month [IQR])	between registration and recruitment start		-9.23 [-26.87, -3.23]	1.30 [0.08, 3.63]	<0.001	0
Type of Intervention	Pharmacological	36 (27.7)	100 (31.0)	330 (51.6)	<0.001	0.0
	Exercise therapy	22 (16.9)	58 (18.0)	72 (11.2)		
	Procedure	28 (21.5)	50 (15.5)	71 (11.1)		
	Delivery of health care services	13 (10.0)	30 (9.3)	52 (8.1)		
	Device	5 (3.8)	19 (5.9)	27 (4.2)		
	Food/plants/supplements	5 (3.8)	15 (4.6)	28 (4.4)		
	Education	5 (3.8)	16 (5.0)	12 (1.9)		
	Surgical	1 (0.8)	13 (4.0)	12 (1.9)		
	Wellness	7 (5.4)	11 (3.4)	5 (0.8)		
	Behavioural	3 (2.3)	7 (2.2)	11 (1.7)		
	Biological treatment	2 (1.5)	4 (1.2)	10 (1.6)		
	Lifestyle	3 (2.3)	0 (0.0)	10 (1.6)		
Condition	Osteoarthritis	20 (15.4)	71 (22.0)	136 (21.2)	0.003	0.0
	Rheumatoid arthritis	36 (27.7)	62 (19.2)	124 (19.4)		
	Spondylarthritis	11 (8.5)	12 (3.7)	58 (9.1)		
	Connective tissue disease	8 (6.2)	24 (7.4)	64 (10.0)		
	Fibromyalgia	12 (9.2)	19 (5.9)	24 (3.8)		
	Arthroplasty	1 (0.8)	17 (5.3)	29 (4.5)		
	Low back pain	6 (4.6)	16 (5.0)	24 (3.8)		
	Gout	0 (0.0)	6 (1.9)	18 (2.8)		
	Fractures	0 (0.0)	9 (2.8)	10 (1.6)		
	Multiple diseases	2 (1.5)	4 (1.2)	13 (2.0)		
	Juvenile idiopathic arthritis	4 (3.1)	4 (1.2)	10 (1.6)		
	Knee pain	1 (0.8)	1 (0.3)	12 (1.9)		
	Anterior cruciate ligament	2 (1.5)	4 (1.2)	6 (0.9)		
	Neck pain	3 (2.3)	1 (0.3)	8 (1.2)		
	Subacromial impingement syndrome	2 (1.5)	5 (1.5)	4 (0.6)		
	Other	22 (16.9)	68 (21.1)	100 (15.6)		
Journal	BMC musculoskeletal	7 (5.4)	103 (31.9)	103 (16.1)	<0.001	0.0

Variable	Category	Not Registered No. (%)	Retrospective No. (%)	Prospective No. (%)	P value	% missing
	Disorders					
	Annals of the Rheumatic Diseases	7 (5.4)	37 (11.5)	109 (17.0)	<0.001	0.0
	Arthritis & Rheumatology	1 (0.8)	8 (2.5)	58 (9.1)		
	Osteoarthritis and Cartilage	2 (1.5)	17 (5.3)	42 (6.6)		
	Arthritis Care & Research	6 (4.6)	19 (5.9)	33 (5.2)		
	Clinical Rheumatology	22 (16.9)	20 (6.2)	14 (2.2)		
	The Lancet	1 (0.8)	6 (1.9)	47 (7.3)		
	Arthritis Research & Therapy	1 (0.8)	12 (3.7)	36 (5.6)		
	Rheumatology	6 (4.6)	13 (4.0)	21 (3.3)		
	Rheumatology International	19 (14.6)	11 (3.4)	6 (0.9)		
	JAMA	0 (0.0)	2 (0.6)	28 (4.4)		
	The Journal of Rheumatology	8 (6.2)	10 (3.1)	12 (1.9)		
	Annals of Internal Medicine	0 (0.0)	4 (1.2)	20 (3.1)		
	Arthritis and Rheumatism	2 (1.5)	9 (2.8)	12 (1.9)		
	International Journal of Rheumatic Diseases	7 (5.4)	5 (1.5)	8 (1.2)		
	Other	41 (31.5)	47 (14.6)	91 (14.2)		

Abbreviations

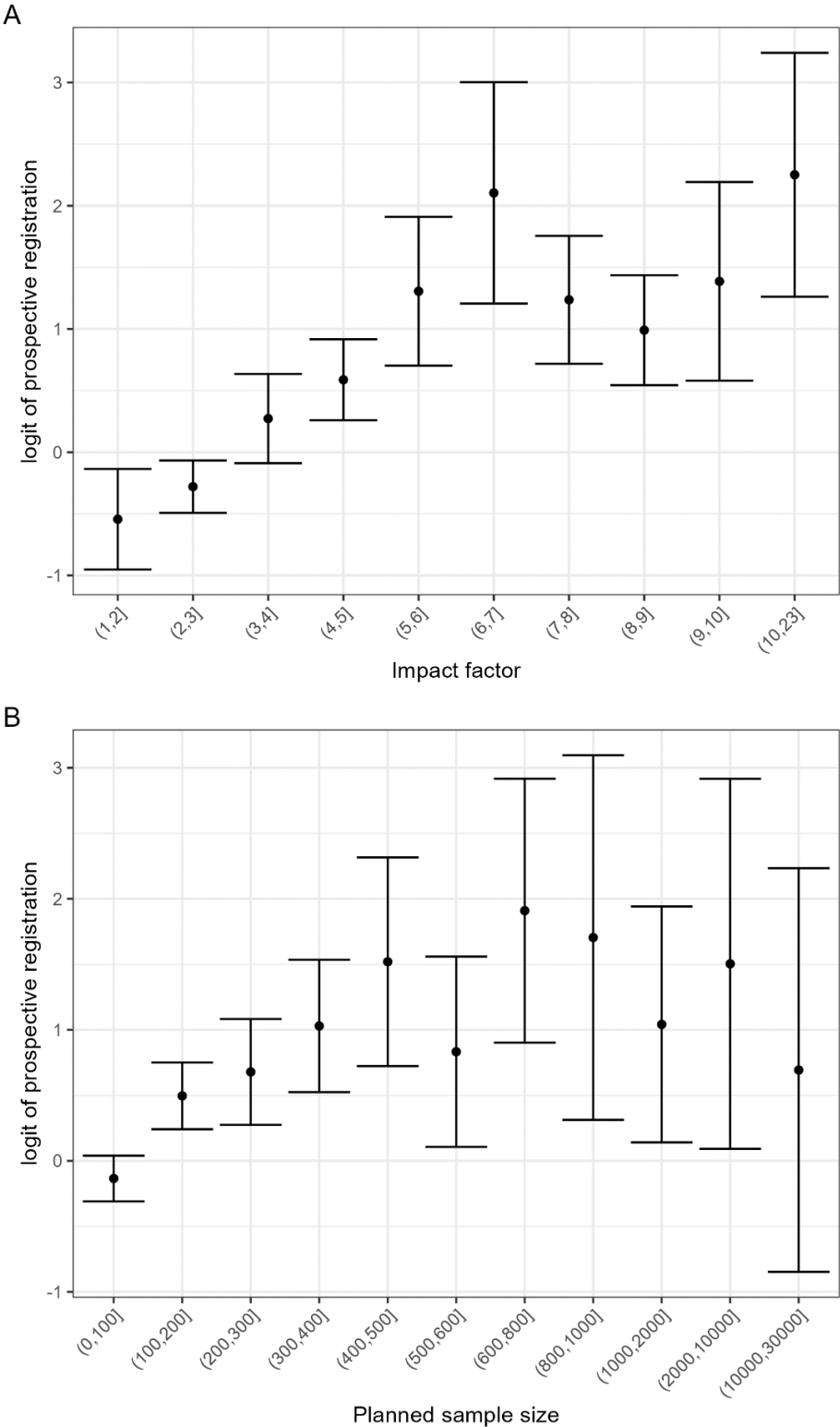
a. ICMJE. International Committee of Medical Journals Editors

Supplementary Table 4. Proportion of RCTs published per year Prospective, Retrospective, or Unregistered, Stratified by ICMJE-compliant Journals

Year/type of registration	Overall No. (%)	Not ICMJE No. (%)	ICMJE No. (%)
2009 - 2022	1093	531	562
Not registered	130 (11.9)	97 (18.3)	33 (5.9)
Retrospective	323 (29.6)	201 (37.9)	122 (21.7)
Prospective	640 (58.6)	233 (43.9)	407 (72.4)
2009	15	9	6
Not registered	8 (53.3)	6 (66.7)	2 (33.3)
Retrospective	5 (33.3)	2 (22.2)	3 (50.0)
Prospective	2 (13.3)	1 (11.1)	1 (16.7)
2010	32	17	15
Not registered	10 (31.2)	7 (41.2)	3 (20.0)
Retrospective	11 (34.4)	7 (41.2)	4 (26.7)
Prospective	11 (34.4)	3 (17.6)	8 (53.3)
2011	45	24	21
Not registered	10 (22.2)	9 (37.5)	1 (4.8)
Retrospective	19 (42.2)	10 (41.7)	9 (42.9)
Prospective	16 (35.6)	5 (20.8)	11 (52.4)
2012	49	30	19
Not registered	10 (20.4)	9 (30.0)	1 (5.3)
Retrospective	17 (34.7)	10 (33.3)	7 (36.8)
Prospective	22 (44.9)	11 (36.7)	11 (57.9)
2013	57	25	32
Not registered	12 (21.1)	10 (40.0)	2 (6.2)
Retrospective	15 (26.3)	8 (32.0)	7 (21.9)
Prospective	30 (52.6)	7 (28.0)	23 (71.9)
2014	66	23	43
Not registered	10 (15.2)	7 (30.4)	3 (7.0)
Retrospective	25 (37.9)	8 (34.8)	17 (39.5)
Prospective	31 (47.0)	8 (34.8)	23 (53.5)
2015	67	33	34
Not registered	5 (7.5)	4 (12.1)	1 (2.9)
Retrospective	18 (26.9)	12 (36.4)	6 (17.6)
Prospective	44 (65.7)	17 (51.5)	27 (79.4)

Year/type of registration	Overall No. (%)	Not ICMJE No. (%)	ICMJE No. (%)
2016	81	50	31
Not registered	8 (9.9)	8 (16.0)	0 (0.0)
Retrospective	33 (40.7)	20 (40.0)	13 (41.9)
Prospective	40 (49.4)	22 (44.0)	18 (58.1)
2017	98	39	59
Not registered	10 (10.2)	8 (20.5)	2 (3.4)
Retrospective	33 (33.7)	16 (41.0)	17 (28.8)
Prospective	55 (56.1)	15 (38.5)	40 (67.8)
2018	71	49	22
Not registered	12 (16.9)	11 (22.4)	1 (4.5)
Retrospective	23 (32.4)	20 (40.8)	3 (13.6)
Prospective	36 (50.7)	18 (36.7)	18 (81.8)
2019	103	39	64
Not registered	8 (7.8)	4 (10.3)	4 (6.2)
Retrospective	27 (26.2)	16 (41.0)	11 (17.2)
Prospective	68 (66.0)	19 (48.7)	49 (76.6)
2020	97	32	65
Not registered	6 (6.2)	3 (9.4)	3 (4.6)
Retrospective	20 (20.6)	10 (31.2)	10 (15.4)
Prospective	71 (73.2)	19 (59.4)	52 (80.0)
2021	159	83	76
Not registered	9 (5.7)	7 (8.4)	2 (2.6)
Retrospective	48 (30.2)	37 (44.6)	11 (14.5)
Prospective	102 (64.2)	39 (47.0)	63 (82.9)
2022	153	78	75
Not registered	12 (7.8)	4 (5.1)	8 (10.7)
Retrospective	29 (19.0)	25 (32.1)	4 (5.3)
Prospective	112 (73.2)	49 (62.8)	63 (84.0)

Supplementary Figure 1. Logit of the proportion of RCT with prospective registration as a function of impact factor (A) and of sample size (B). Errors bars correspond to the logit of the 95% confidence interval calculated with the Wilsons core interval



Supplementary Table 5. Multivariable analysis considering the sub-group of interventions among non-pharmacological trials^a

Variable	OR [95% CI]	P value
International Trial		
No	Reference	
Yes	1.94 [1.18, 3.18]	0.009
Funding		
Non-Industry	Reference	
Industry	1.01 [0.71, 1.44]	0.96
Year		
	1.16 [1.11, 1.20]	<0.001
Number of authors		
	1.01 [0.98, 1.03]	0.61
Journal endorsed ICMJE^b recommendations		
No	Reference	
Yes	1.22 [0.80, 1.85]	0.36
Impact factor if < 5.5		
	1.35 [1.15, 1.58]	<0.001
Impact factor if > 5.5		
	1.04 [0.71, 1.51]	
Sample size if < 500, per 100 participants		
	1.24 [1.11, 1.38]	<0.001
Sample size if > 500, per 100 participants		
	0.99 [0.79, 1.24]	
Intervention		
Pharmacological	Reference	
Behavioural	0.78 [0.29, 2.10]	0.62
Biological	0.94 [0.30, 2.93]	0.92
Delivery of health care services	0.57 [0.34, 0.97]	0.04
Device	0.96 [0.50, 1.85]	0.90
Education	0.34 [0.14, 0.79]	0.01
Exercise therapy	0.75 [0.47, 1.19]	0.22
Food/plants/supplements	1.10 [0.56, 2.16]	0.78
lifestyle	1.88 [0.45, 7.84]	0.38
procedure	0.73 [0.47, 1.15]	0.18

Variable	OR [95% CI]	P value
surgical	0.51 [0.20, 1.27]	0.15
wellness	0.24 [0.08, 0.70]	0.00
<p>a. Odds ratios (OR) and 95% confidence interval for each predictor of prospective registration obtained in the logistic regression analysis.</p> <p>b. <i>ICMJE. International Committee of Medical Journals Editors</i></p>		

Supplementary Table 6. Multivariable analysis considering the conditions assessed in the included trials^a

Variable	OR [95% CI]	P value
International Trial		
No	Reference	
Yes	1.94 [1.18, 3.18]	0.009
Funding		
Non-Industry	Reference	
Industry	1.01 [0.71, 1.44]	0.96
Year		
	1.16 [1.11, 1.20]	<0.001
Number of authors		
	1.01 [0.98, 1.03]	0.61
Journal endorsed ICMJE^b recommendations		
No	Reference	
Yes	1.22 [0.80, 1.85]	0.36
Intervention		
Non-pharmacological	Reference	
Pharmacological	1.67 [1.16, 2.39]	0.06
Impact factor if < 5.5		
	1.35 [1.15, 1.58]	<0.001
Impact factor if > 5.5		
	1.04 [0.71, 1.51]	
Sample size if < 500, per 100 participants		
	1.24 [1.11, 1.38]	<0.001
Sample size if > 500, per 100 participants		
	0.99 [0.79, 1.24]	
Condition of interest/ population		
Rheumatoid Arthritis	Reference	
Anterior cruciate ligament	2.60 [0.71, 9.48]	0.15
Arthroplasty	3.11 [1.51, 6.39]	0.002
Connective tissue disease	1.86 [1.03, 3.36]	0.14
Fibromyalgia	1.63 [0.83, 3.21]	0.15
Fractures	3.51 [1.27, 9.70]	0.02
Gout	2.67 [0.94, 7.61]	0.07

Variable	OR [95% CI]	P value
Juvenile idiopathic arthritis	1.03 [0.33, 3.24]	0.95
Knee pain	14.14 [2.74, 73.06]	0.002
Low back pain	3.56 [1.69, 7.50]	<0.001
Multiple diseases	1.72 [0.55, 5.34]	0.35
Neck pain	8.01 [2.06, 31.05]	0.003
Osteoarthritis	1.99 [1.26, 3.15]	0.003
Spondylarthritis	1.31 [0.68, 2.54]	0.42
Subacromial impingement syndrome	0.79 [0.18, 3.42]	0.75
Other	1.82 [1.13, 2.93]	0.01
<p>a. Odds ratios (OR) and 95% confidence interval for each predictor of prospective registration obtained in the logistic regression analysis.</p> <p>b. <i>ICMJE. International Committee of Medical Journals Editors</i></p>		

Supplementary Table 7. Characteristics of respondents and non-respondents that retrospectively registered RCTs and were invited to answer the study survey

Variable	Category	Overall No. (%)	Non-respondents No. (%)	Respondents No. (%)	p	
		365	323	42		
Continent	Europe	162 (44.4)	136 (42.1)	26 (61.9)	0.143	
	Asia	104 (28.5)	97 (30.0)	7 (16.7)		
	South America	30 (8.2)	26 (8.0)	4 (9.5)		
	North America	28 (7.7)	26 (8.0)	2 (4.8)		
	Transcontinental	22 (6.0)	22 (6.8)	0 (0.0)		
	Oceania	11 (3.0)	9 (2.8)	2 (4.8)		
	Africa	8 (2.2)	7 (2.2)	1 (2.4)		
International	No	328 (89.9)	286 (88.5)	42 (100.0)	0.041	
	Yes	37 (10.1)	37 (11.5)	0 (0.0)		
Sponsor	Non-industry	265 (72.6)	230 (71.2)	35 (83.3)	0.141	
	Industry	100 (27.4)	93 (28.8)	7 (16.7)		
Number of authors mean (SD)		8.85 (5.87)	8.77 (5.50)	9.48 (8.24)	0.463	
Target Sample Size median [IQR]		90.00 [60.00, 190.00]	90.00 [60.00, 190.00]	101.50 [52.50, 196.75]	0.875	
ICMJE^a	No	245 (67.1)	223 (69.0)	22 (52.4)	0.047	
	Yes	120 (32.9)	100 (31.0)	20 (47.6)		
Impact Factor median [IQR]		2.48 [2.18, 4.46]	2.48 [2.17, 4.41]	3.49 [2.23, 5.04]	0.270	
Type of Intervention	Pharmacological	105 (28.8)	93 (28.8)	12 (28.6)	0.577	
	Procedure	72 (19.7)	67 (20.7)	5 (11.9)		
	Exercise therapy	62 (17.0)	54 (16.7)	8 (19.0)		
	Delivery of health care services	41 (11.2)	35 (10.8)	6 (14.3)		
	Device	23 (6.3)	18 (5.6)	5 (11.9)		
	Education	19 (5.2)	16 (5.0)	3 (7.1)		
	Surgical	16 (4.4)	15 (4.6)	1 (2.4)		
	Food/plants/supplements	12 (3.3)	12 (3.7)	0 (0.0)		
	Biological treatment	6 (1.6)	6 (1.9)	0 (0.0)		
	Behavioural	5 (1.4)	4 (1.2)	1 (2.4)		
	Wellness	4 (1.1)	3 (0.9)	1 (2.4)		
	Osteoarthritis	79 (21.6)	74 (22.9)	5 (11.9)	0.006	
	Condition	Rheumatoid arthritis	61 (16.7)	53 (16.4)	8 (19.0)	
		Arthroplasty	24 (6.6)	23 (7.1)	1 (2.4)	
Connective tissue disease		32 (8.8)	29 (9.0)	3 (7.1)		
Low back pain		22 (6.0)	21 (6.5)	1 (2.4)		
Fibromyalgia		17 (4.7)	16 (5.0)	1 (2.4)		
Fractures		13 (3.6)	13 (4.0)	0 (0.0)		
Spondylarthritis		12 (3.3)	9 (2.8)	3 (7.1)		
Multiple diseases		6 (1.6)	5 (1.5)	1 (2.4)		
Subacromial impingement syndrome		6 (1.6)	4 (1.2)	2 (4.8)		
Gout		5 (1.4)	5 (1.5)	0 (0.0)		
Anterior cruciate ligament		4 (1.1)	3 (0.9)	1 (2.4)		
Juvenile idiopathic arthritis		3 (0.8)	2 (0.6)	1 (2.4)		
Knee pain		1 (0.3)	0 (0.0)	1 (2.4)		
Neck pain		1 (0.3)	0 (0.0)	1 (2.4)		
Other		79 (21.6)	66 (20.4)	13 (31.0)		
Journal		BMC musculoskeletal Disorders	128 (35.1)	116 (35.9)	12 (28.6)	0.341
		Annals of the Rheumatic Diseases	38 (10.4)	33 (10.2)	5 (11.9)	

Variable	Category	Overall No. (%)	Non-respondents No. (%)	Respondents No. (%)	p
	Osteoarthritis and Cartilage	21 (5.8)	20 (6.2)	1 (2.4)	
	Clinical Rheumatology	19 (5.2)	16 (5.0)	3 (7.1)	
	Arthritis Research & Therapy	15 (4.1)	15 (4.6)	0 (0.0)	
	Rheumatology	14 (3.8)	12 (3.7)	2 (4.8)	
	Arthritis Care & Research	12 (3.3)	7 (2.2)	5 (11.9)	
	Rheumatology International	12 (3.3)	11 (3.4)	1 (2.4)	
	The Journal of Rheumatology	12 (3.3)	12 (3.7)	0 (0.0)	
	The Lancet	10 (2.7)	8 (2.5)	2 (4.8)	
	Advances in Rheumatology	8 (2.2)	7 (2.2)	1 (2.4)	
	Arthritis & Rheumatology	7 (1.9)	7 (2.2)	0 (0.0)	
	Clinical and Experimental Rheumatology	7 (1.9)	7 (2.2)	0 (0.0)	
	Joint Bone Spine	7 (1.9)	6 (1.9)	1 (2.4)	
	JAMA	6 (1.6)	4 (1.2)	2 (4.8)	
	Other	107 (29.3)	95 (29.4)	12 (28.6)	
Abbreviations					
a- ICMJE. International Committee of Medical Journals Editors					

Supplementary Table 8. Characteristics respondents and non-respondents that did not register RCTs and were invited to answer the study survey

Variable	Category	Overall No. (%)	Non-respondents No. (%)	Respondents No. (%)	p
		126	112	14	
Continent	Asia	64 (50.8)	58 (51.8)	6 (42.9)	0.452
	Europe	41 (32.5)	33 (29.5)	8 (57.1)	
	North America	9 (7.1)	9 (8.0)	0 (0.0)	
	South America	5 (4.0)	5 (4.5)	0 (0.0)	
	Africa	3 (2.4)	3 (2.7)	0 (0.0)	
	Oceania	3 (2.4)	3 (2.7)	0 (0.0)	
	Transcontinental	1 (0.8)	1 (0.9)	0 (0.0)	
International	No	120 (95.2)	107 (95.5)	13 (92.9)	1.000
	Yes	6 (4.8)	5 (4.5)	1 (7.1)	
Funding	Non-industry	57 (64.0)	50 (65.8)	7 (53.8)	0.605
	Industry	32 (36.0)	26 (34.2)	6 (46.2)	
Number of authors mean (SD)		7.32 (4.74)	7.46 (4.92)	6.21 (2.78)	0.358
Target Sample Size median [IQR]		64.50 [45.00, 111.50]	64.00 [45.00, 110.50]	76.50 [58.50, 140.00]	0.330
ICMJE^a	No	92 (73.0)	85 (75.9)	7 (50.0)	0.082
	Yes	34 (27.0)	27 (24.1)	7 (50.0)	
Impact Factor median [IQR]		2.25 [1.77, 3.34]	2.18 [1.77, 2.98]	3.65 [1.55, 6.80]	0.266
Type of Intervention	Pharmacological	36 (28.6)	31 (27.7)	5 (35.7)	0.228
	Procedure	26 (20.6)	24 (21.4)	2 (14.3)	
	Exercise therapy	20 (15.9)	19 (17.0)	1 (7.1)	
	Delivery of health care services	13 (10.3)	8 (7.1)	5 (35.7)	
	Wellness	8 (6.3)	7 (6.2)	1 (7.1)	
	Device	5 (4.0)	5 (4.5)	0 (0.0)	
	Education	5 (4.0)	5 (4.5)	0 (0.0)	
	Food/plants/supplements	4 (3.2)	4 (3.6)	0 (0.0)	
	Behavioural	3 (2.4)	3 (2.7)	0 (0.0)	
	Lifestyle	3 (2.4)	3 (2.7)	0 (0.0)	
	Biological treatment	2 (1.6)	2 (1.8)	0 (0.0)	
	Surgical	1 (0.8)	1 (0.9)	0 (0.0)	
Condition	Rheumatoid arthritis	33 (26.2)	28 (25.0)	5 (35.7)	0.874
	Osteoarthritis	20 (15.9)	19 (17.0)	1 (7.1)	
	Spondylarthritis	12 (9.5)	11 (9.8)	1 (7.1)	
	Fibromyalgia	11 (8.7)	10 (8.9)	1 (7.1)	
	Low back pain	6 (4.8)	5 (4.5)	1 (7.1)	
	Connective tissue disease	8 (6.3)	7 (6.2)	1 (7.1)	
	Juvenile idiopathic arthritis	4 (3.2)	4 (3.6)	0 (0.0)	
	Multiple diseases	3 (2.4)	2 (1.8)	1 (7.1)	
	Anterior cruciate ligament	2 (1.6)	2 (1.8)	0 (0.0)	
	Neck pain	2 (1.6)	2 (1.8)	0 (0.0)	
	Subacromial impingement syndrome	2 (1.6)	1 (0.9)	1 (7.1)	
	Arthroplasty	1 (0.8)	1 (0.9)	0 (0.0)	
	Knee pain	1 (0.8)	1 (0.9)	0 (0.0)	
	Other	21 (16.7)	19 (17.0)	2 (14.3)	
Journal	Clinical Rheumatology	22 (17.5)	20 (17.9)	2 (14.3)	
	Rheumatology	19 (15.1)	18 (16.1)	1 (7.1)	0.083

Variable	Category	Overall No. (%)	Non-respondents No. (%)	Respondents No. (%)	p
	International				
	Annals of the Rheumatic Diseases	9 (7.1)	5 (4.5)	4 (28.6)	
	Archives of Rheumatology	7 (5.6)	6 (5.4)	1 (7.1)	
	BMC Musculoskeletal Disorders	7 (5.6)	7 (6.2)	0 (0.0)	
	International Journal of Rheumatic Diseases	7 (5.6)	6 (5.4)	1 (7.1)	
	The Journal of Rheumatology	7 (5.6)	7 (6.2)	0 (0.0)	
	Arthritis Care & Research	6 (4.8)	6 (5.4)	0 (0.0)	
	Rheumatology	5 (4.0)	5 (4.5)	0 (0.0)	
	Clinical and Experimental Rheumatology	4 (3.2)	4 (3.6)	0 (0.0)	
	Musculoskeletal care	4 (3.2)	2 (1.8)	2 (14.3)	
	Scandinavian Journal of Rheumatology	4 (3.2)	4 (3.6)	0 (0.0)	
	Modern Rheumatology	3 (2.4)	3 (2.7)	0 (0.0)	
	RMD Open	3 (2.4)	1 (0.9)	2 (14.3)	
	International Journal of Rheumatology	2 (1.6)	2 (1.8)	0 (0.0)	
	Other	55 (43.7)	49 (43.8)	6 (42.9)	

Abbreviation

a. ICMJE. International Committee of Medical Journals Editors