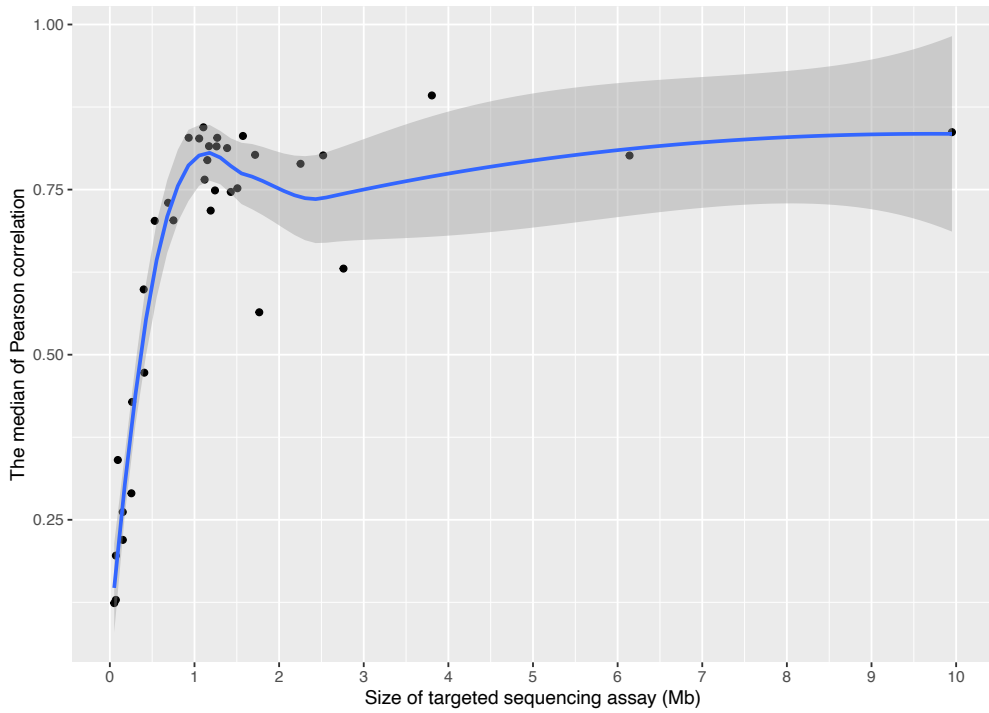
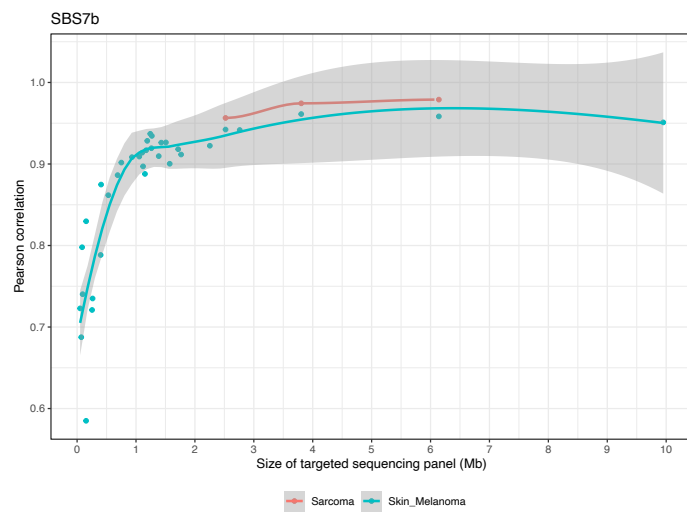
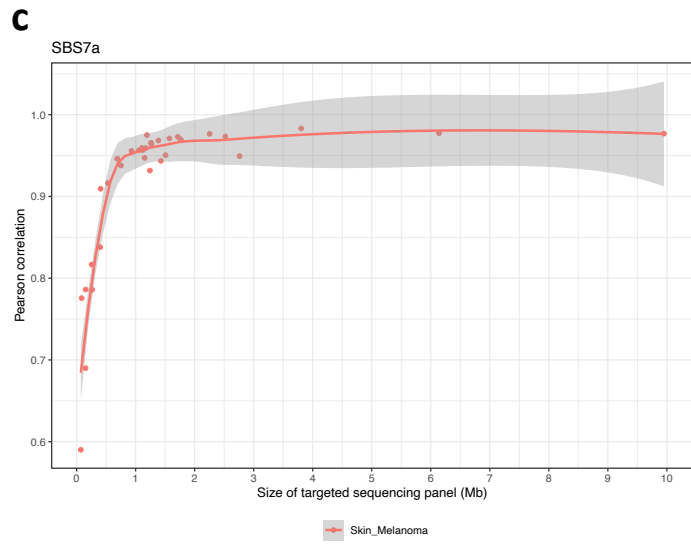
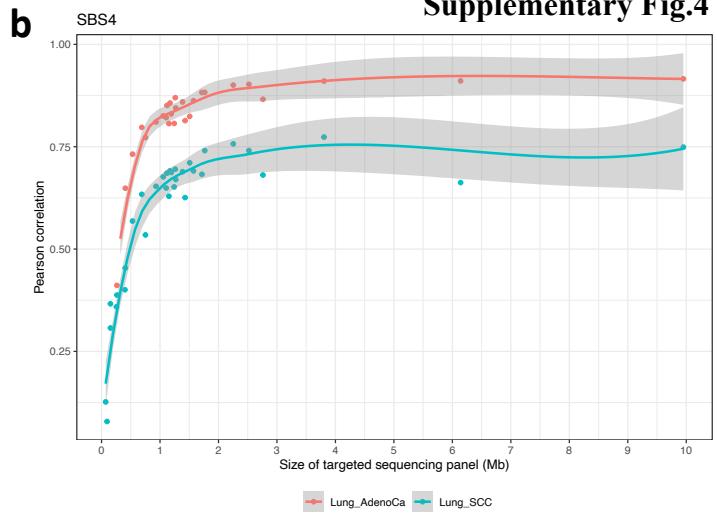
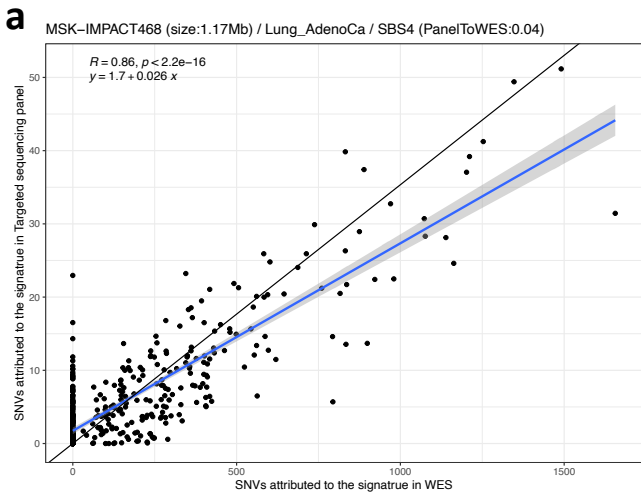
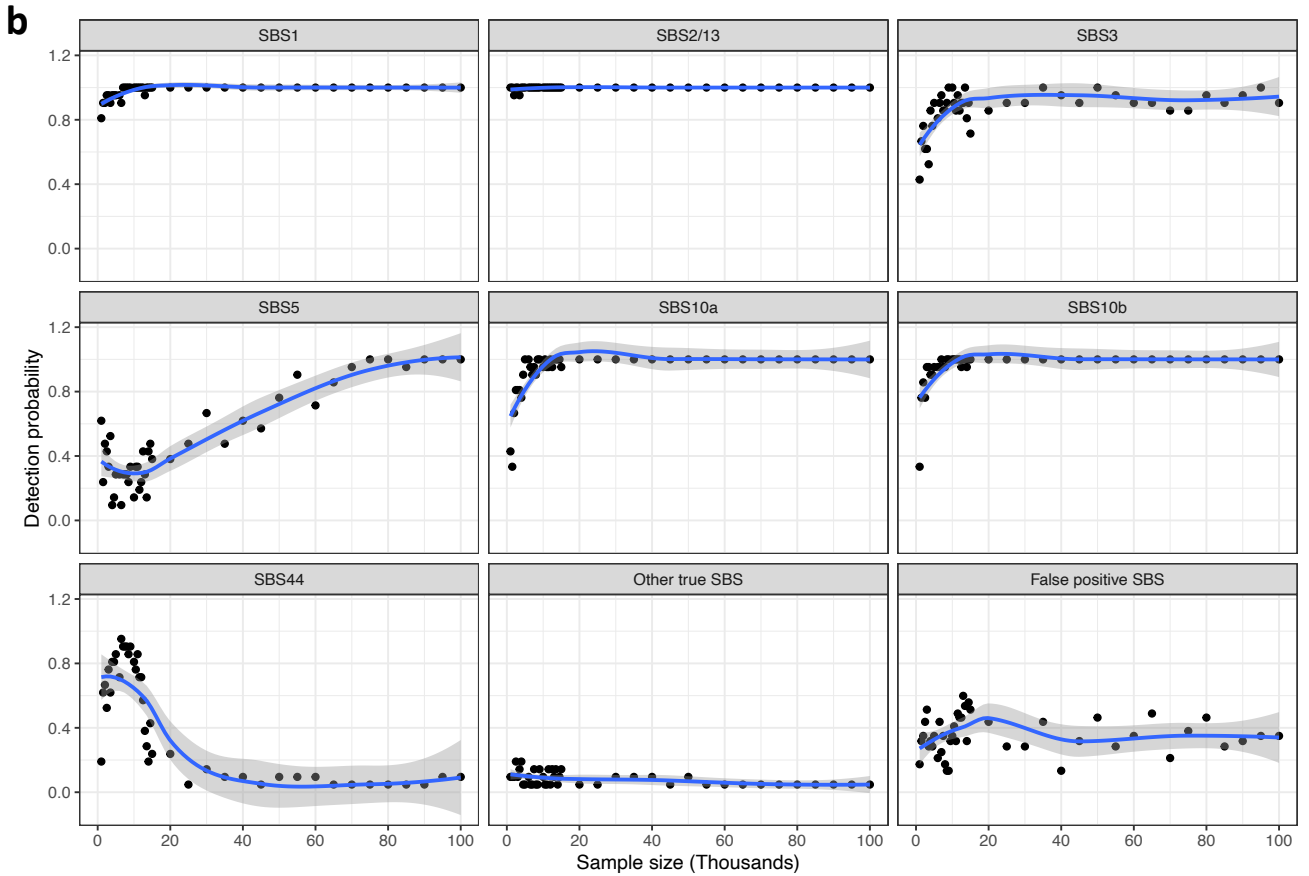
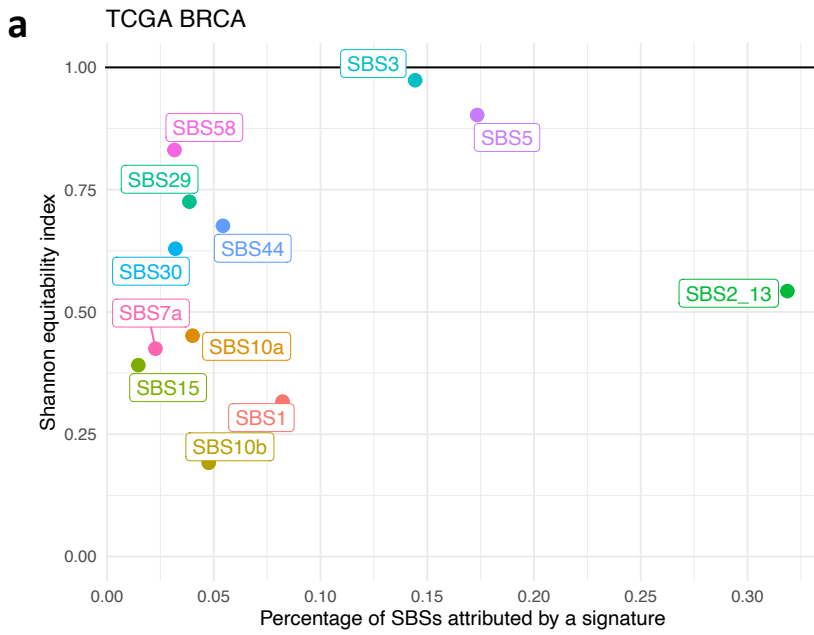
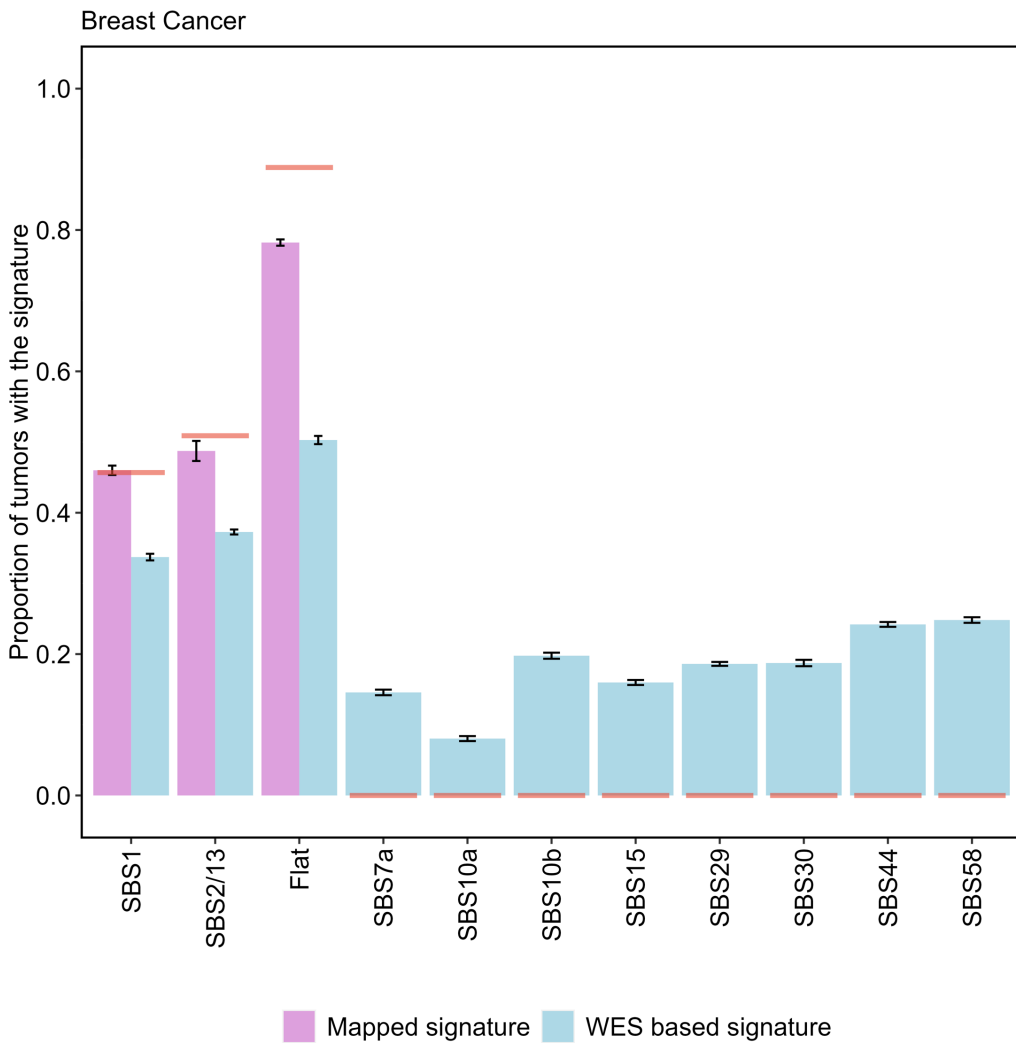


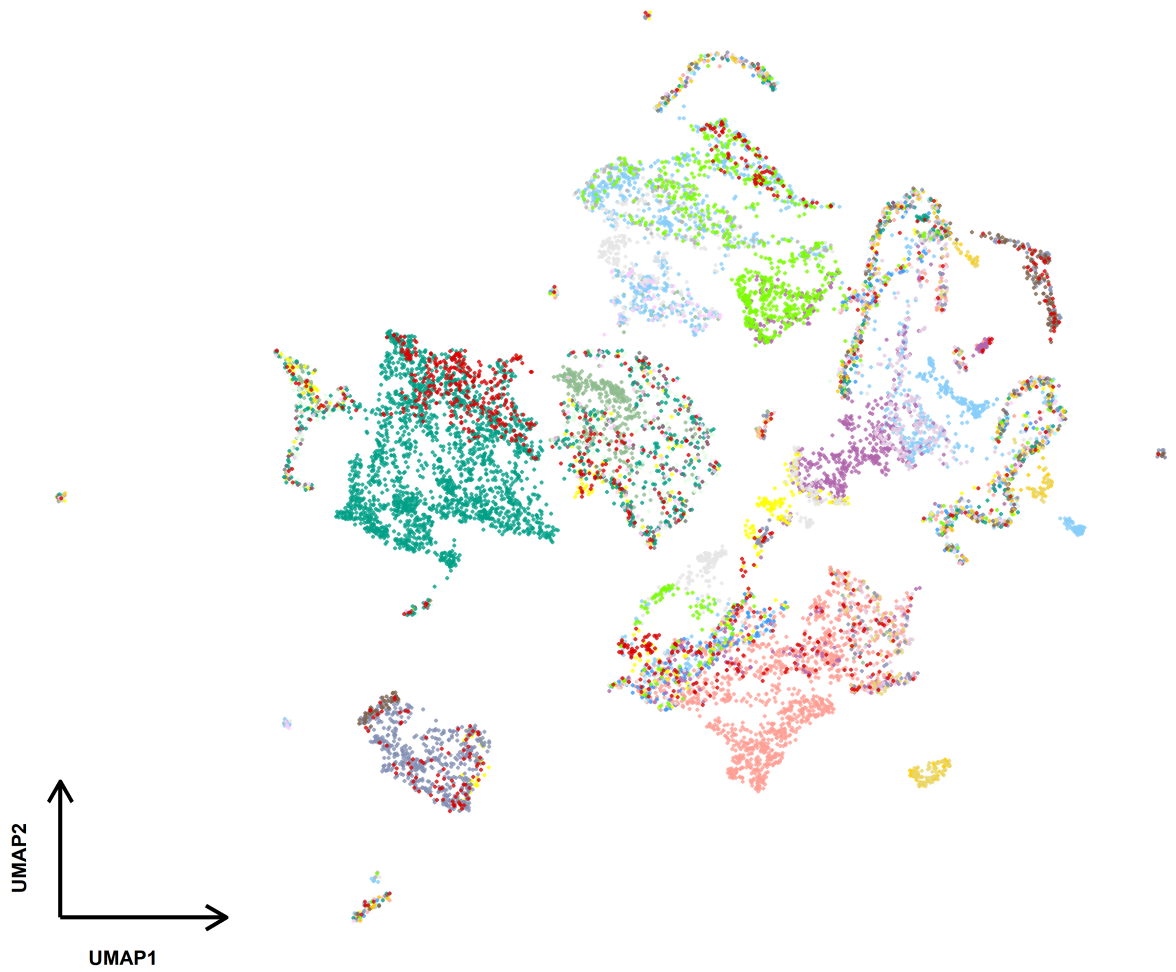
**c**



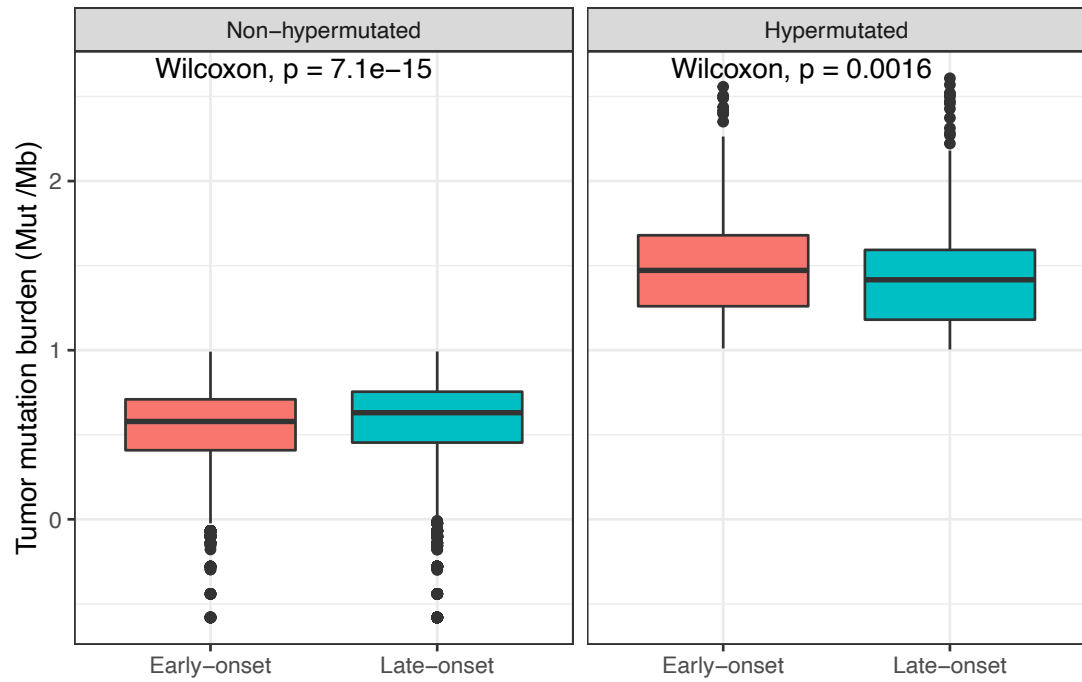






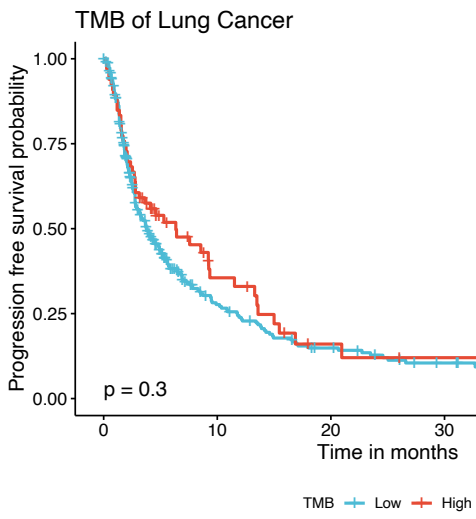


- |                                     |                                    |  |
|-------------------------------------|------------------------------------|--|
| ● Bladder Cancer (587)              | ● Bowel Cancer-Colorectal (1576)   | ● Bowel Cancer-Other (55)              |
| ● Breast Cancer (491)               | ● Cancer of Unknown Primary (923)  | ● CNS or Brain Cancer-Glioma (1436)    |
| ● CNS or Brain Cancer-Other (53)    | ● Esophagogastric Cancer (256)     | ● Gynecologic Cancer-Endometrial (758) |
| ● Gynecologic Cancer-Other (126)    | ● Gynecologic Cancer-Ovarian (373) | ● Head and Neck Cancer (400)           |
| ● Hematologic Cancer-Lymphoid (714) | ● Hematologic Cancer-Myeloid (162) | ● Hepatobiliary Cancer (156)           |
| ● Kidney Cancer (51)                | ● Lung Cancer (2539)               | ● Pancreatic Cancer (894)              |
| ● Prostate Cancer (154)             | ● Rare Cancer (242)                | ● Skin Cancer or Melanoma (784)        |
| ● Soft Tissue Cancer (212)          | ● Thyroid Cancer (171)             |  |





**a**



**b**

