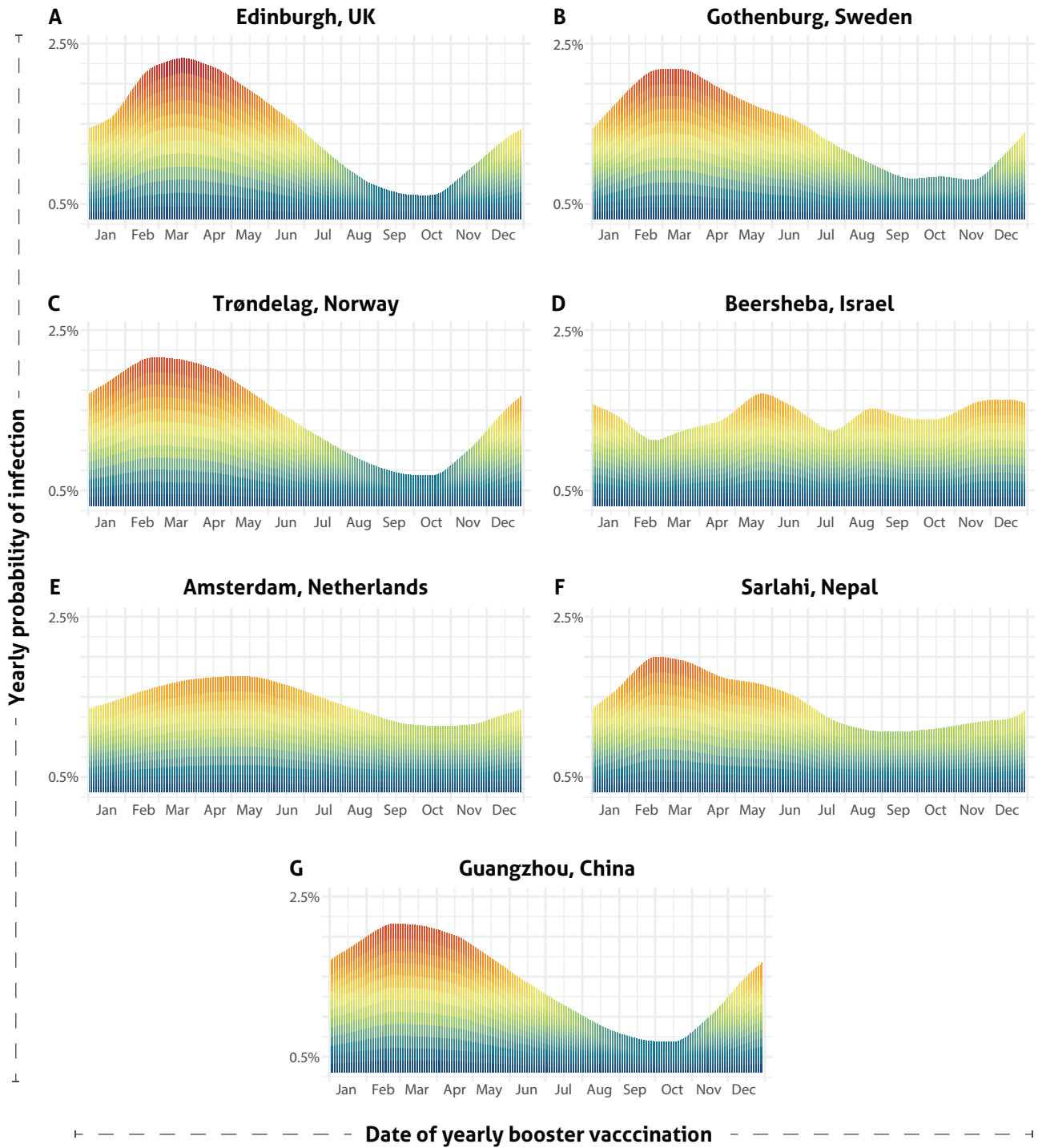
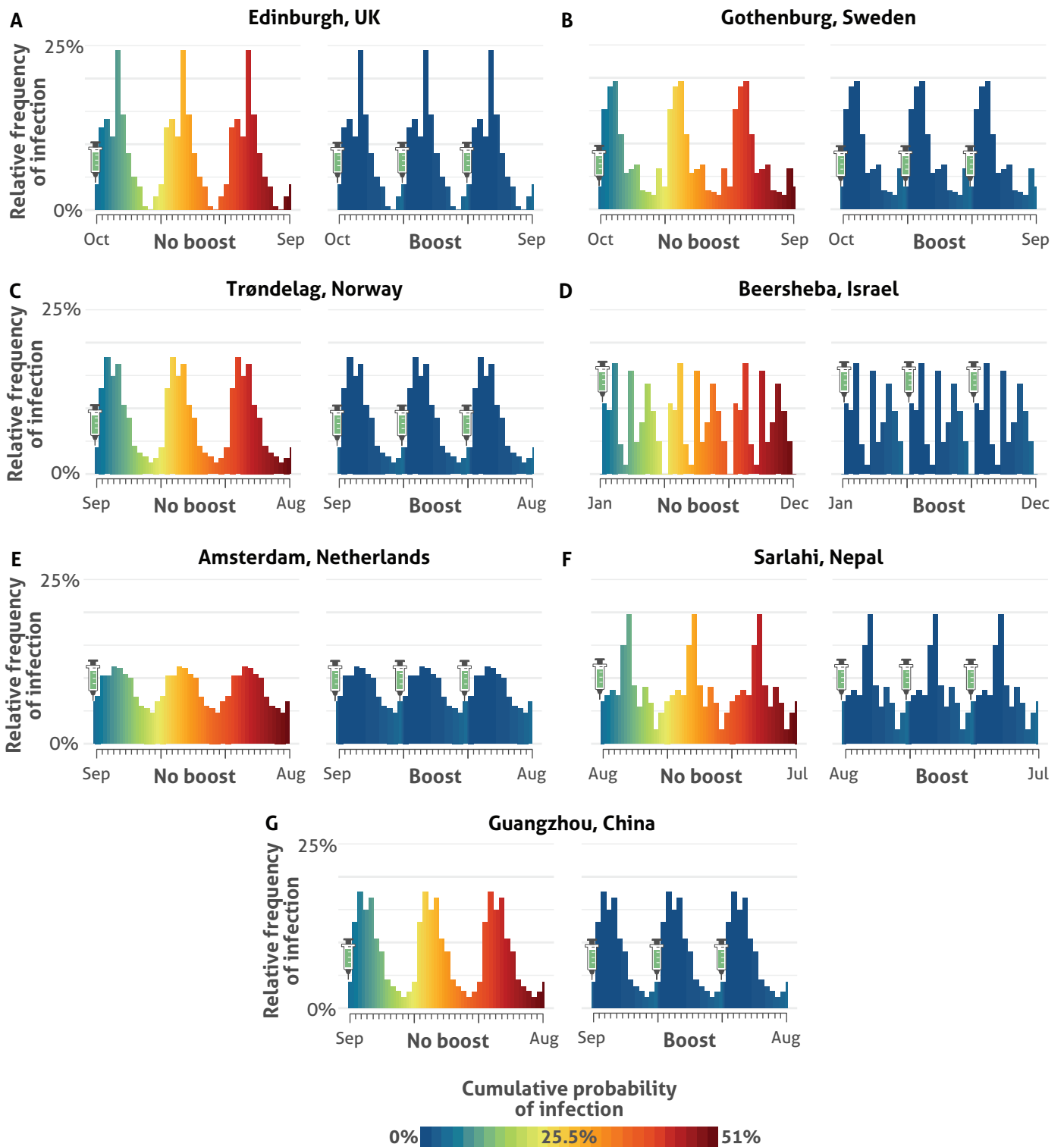


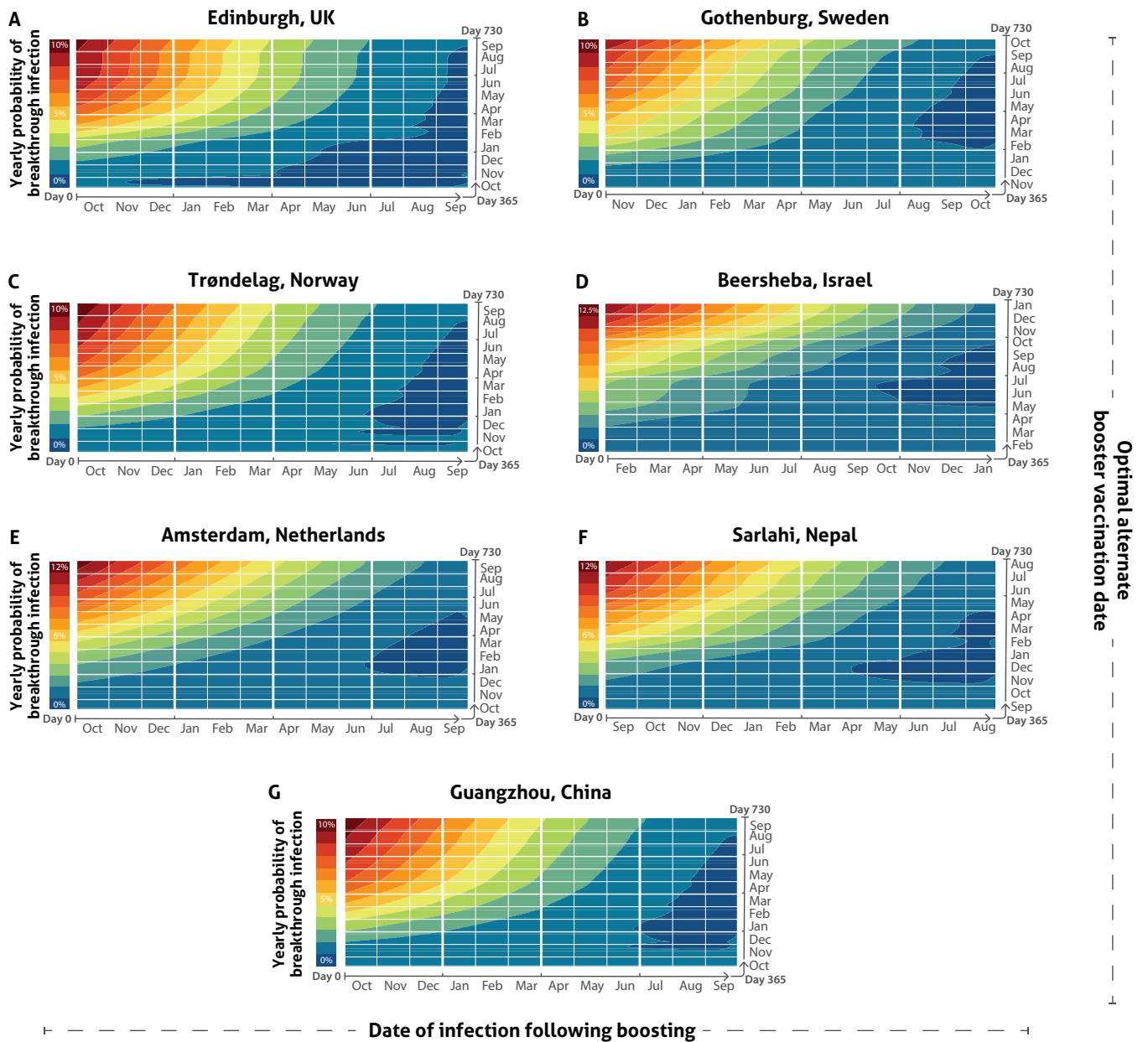
Supplementary Figure 1. Month of optimal booster date versus the month exhibiting the highest yearly seasonal incidence in 11 locations across the Northern Hemisphere



Supplementary Figure 2. Yearly probability of infection (red: high to blue: low) based on yearly date of booster vaccination in 7 additional locations across the Northern Hemisphere.



Supplementary Figure 3. Cumulative probabilities of infection—indicated by the blue / green / yellow / orange / red color gradient—in the year after booster vaccination on the optimal date and in the two following years without the yearly booster vaccination, in 7 additional locations across the Northern Hemisphere. The heights of the bars reflect projections of seasonal population-level incidence patterns under endemic conditions without incorporating a population-wide effect of booster vaccination, i.e. assuming that low yearly global uptake (Jacobs et al. 2023) remains unchanged.



Supplementary Figure 4. Probability of infection upon delaying booster vaccination to each date of the year, in response to a breakthrough infection occurring in the interval between optimal booster vaccination dates in 7 additional locations across the Northern Hemisphere. Day 365 is the approximate optimal yearly booster vaccination date. Infection will delay the optimal booster vaccination date beyond day 365 to a greater and greater degree as the interval between the yearly optimal booster date and the date of infection increases.