

## Supplementary Material

1  
2  
3  
4  
5  
6  
7  
8  
9  
10  
11  
12  
13  
14  
15  
16  
17  
18  
19  
20  
21  
22  
23  
24  
25

### Supplementary Methods

#### Proteomics data quality control pipeline

##### *Internal quality control*

Four internal controls are added to each sample to monitor the quality of assay performance, as well as the quality of individual samples. The quality control (QC) is performed in two steps: 1. Each sample plate is evaluated on the standard deviation of the internal controls. This should be below 0.2 Normalized Protein eXpression (NPX) value. Only data from sample plate that pass this quality control will be reported; 2. The quality of each sample is assessed by evaluating the deviation from the median value of the controls for each individual sample. Samples that deviate less than 0.3 NPX from the median pass the quality control.

##### *External quality control*

Interquartile-range (IQR)-median and principal component analysis (PCA) analyses are used to detect and visualise outliers using ‘OlinkAnalyze’ R package. The `olink_qc_plot` function generates a facet plot per Panel using `ggplot` and `ggplot2::geom_point` and `stats::IQR` plotting IQR vs. median for all samples. This checks if any samples tend to be classified as outliers. Five standard deviations from the mean IQR and from the mean sample median are considered as outliers and excluded.

The values are by default scaled and centred in the PCA and proteins with missing NPX values are by default removed from the corresponding assay. Imputation by the median is done for assays with missingness <10% for multi-plate projects.

Based on these analyses, we then removed: 1) samples with a principal component (PC)1 or PC2 value more than five standard deviations from the mean, and 2) samples with median concentrations (NPX values) across proteins that were more than five standard deviations from the mean median, or those with IQR (NPX) across proteins that were great than five standard deviations from the mean IQR. The removal of outliers is panel specific.

## Supplementary Tables

Supplementary table 1. Two-sample Mendelian randomization between social isolation and protein concentration.

Gene name	Exposure trait	MR method	Forward MR		
			Social isolation → protein concentration		
			No of SNP	Slope (SE)	P
TNFRSF10A	Number in household	IVW	4	-0.511 (0.402)	0.204
TNFRSF10A	Number in household	MR Egger	4	-0.922 (1.182)	0.517
TNFRSF10A	Number in household	Weighted median	4	-0.318 (0.466)	0.495
TNFRSF10A	Number in household	Maximum likelihood	4	-0.516 (0.407)	0.205
TNFRSF10A	Number in household	Weighted mode	4	-0.214 (0.610)	0.749
TNFRSF10A	Frequency of friend/family visits	IVW	21	0.245 (0.117)	0.037
TNFRSF10A	Frequency of friend/family visits	MR Egger	21	1.242 (0.603)	0.053
TNFRSF10A	Frequency of friend/family visits	Weighted median	21	0.324 (0.143)	0.023
TNFRSF10A	Frequency of friend/family visits	Maximum likelihood	21	0.249 (0.103)	0.016
TNFRSF10A	Frequency of friend/family visits	Weighted mode	21	0.357 (0.240)	0.152
TNFRSF10A	MTAG	IVW	15	0.093 (0.134)	0.488
TNFRSF10A	MTAG	MR Egger	15	1.086 (0.668)	0.128
TNFRSF10A	MTAG	Weighted median	15	0.071 (0.179)	0.690
TNFRSF10A	MTAG	Maximum likelihood	15	0.096 (0.135)	0.476
TNFRSF10A	MTAG	Weighted mode	15	-0.004 (0.293)	0.990
MMP12	Number in household	IVW	4	0.113 (0.418)	0.788
MMP12	Number in household	MR Egger	4	0.646 (1.490)	0.707
MMP12	Number in household	Weighted median	4	0.223 (0.482)	0.643
MMP12	Number in household	Maximum likelihood	4	0.116 (0.390)	0.766
MMP12	Number in household	Weighted mode	4	0.324 (0.687)	0.669
MMP12	Frequency of friend/family visits	IVW	21	-0.053 (0.098)	0.586
MMP12	Frequency of friend/family visits	MR Egger	21	-0.087 (0.529)	0.871
MMP12	Frequency of friend/family visits	Weighted median	21	-0.045 (0.142)	0.751
MMP12	Frequency of friend/family visits	Maximum likelihood	21	-0.052 (0.099)	0.601
MMP12	Frequency of friend/family visits	Weighted mode	21	0.226 (0.280)	0.428
MMP12	MTAG	IVW	15	-0.074 (0.132)	0.576
MMP12	MTAG	MR Egger	15	-0.548 (0.655)	0.418
MMP12	MTAG	Weighted median	15	-0.197 (0.170)	0.248
MMP12	MTAG	Maximum likelihood	15	-0.073 (0.133)	0.587
MMP12	MTAG	Weighted mode	15	-0.201 (0.240)	0.417

TRAIL-R2 (TNFRSF10B)	Number in household	IVW	4	-0.295 (0.626)	0.638
TRAIL-R2 (TNFRSF10B)	Number in household	MR Egger	4	-2.615 (1.477)	0.219
TRAIL-R2 (TNFRSF10B)	Number in household	Weighted median	4	-0.532 (0.519)	0.306
TRAIL-R2 (TNFRSF10B)	Number in household	Maximum likelihood	4	-0.313 (0.417)	0.454
TRAIL-R2 (TNFRSF10B)	Number in household	Weighted mode	4	-1.033 (1.034)	0.392
TRAIL-R2 (TNFRSF10B)	Frequency of friend/family visits	IVW	21	0.264 (0.102)	0.010
TRAIL-R2 (TNFRSF10B)	Frequency of friend/family visits	MR Egger	21	0.359 (0.552)	0.523
TRAIL-R2 (TNFRSF10B)	Frequency of friend/family visits	Weighted median	21	0.218 (0.141)	0.123
TRAIL-R2 (TNFRSF10B)	Frequency of friend/family visits	Maximum likelihood	21	0.274 (0.104)	0.008
TRAIL-R2 (TNFRSF10B)	Frequency of friend/family visits	Weighted mode	21	0.208 (0.258)	0.430
TRAIL-R2 (TNFRSF10B)	MTAG	IVW	15	0.046 (0.137)	0.735
TRAIL-R2 (TNFRSF10B)	MTAG	MR Egger	15	1.139 (0.681)	0.118
TRAIL-R2 (TNFRSF10B)	MTAG	Weighted median	15	0.004 (0.184)	0.982
TRAIL-R2 (TNFRSF10B)	MTAG	Maximum likelihood	15	0.047 (0.138)	0.731
TRAIL-R2 (TNFRSF10B)	MTAG	Weighted mode	15	-0.090 (0.380)	0.816
SKR3 (ACVRL1)	Number in household	IVW	4	-0.190 (0.689)	0.782
SKR3 (ACVRL1)	Number in household	MR Egger	4	-3.140 (1.257)	0.130
SKR3 (ACVRL1)	Number in household	Weighted median	4	-0.097 (0.582)	0.868
SKR3 (ACVRL1)	Number in household	Maximum likelihood	4	-0.203 (0.435)	0.641
SKR3 (ACVRL1)	Number in household	Weighted mode	4	0.029 (0.941)	0.978
SKR3 (ACVRL1)	Frequency of friend/family visits	IVW	21	0.067 (0.106)	0.525
SKR3 (ACVRL1)	Frequency of friend/family visits	MR Egger	21	-0.031 (0.575)	0.958
SKR3 (ACVRL1)	Frequency of friend/family visits	Weighted median	21	0.031 (0.136)	0.819
SKR3 (ACVRL1)	Frequency of friend/family visits	Maximum likelihood	21	0.069 (0.107)	0.517
SKR3 (ACVRL1)	Frequency of friend/family visits	Weighted mode	21	0.021 (0.215)	0.924
SKR3 (ACVRL1)	MTAG	IVW	15	-0.087 (0.143)	0.541
SKR3 (ACVRL1)	MTAG	MR Egger	15	-0.018 (0.715)	0.980
SKR3 (ACVRL1)	MTAG	Weighted median	15	0.020 (0.183)	0.913
SKR3 (ACVRL1)	MTAG	Maximum likelihood	15	-0.085 (0.144)	0.556
SKR3 (ACVRL1)	MTAG	Weighted mode	15	0.199 (0.305)	0.524
TNFRSF11A	Number in household	IVW	4	-0.610 (0.607)	0.314
TNFRSF11A	Number in household	MR Egger	4	-0.420 (2.228)	0.868
TNFRSF11A	Number in household	Weighted median	4	-0.068 (0.501)	0.892
TNFRSF11A	Number in household	Maximum likelihood	4	-0.645 (0.411)	0.116
TNFRSF11A	Number in household	Weighted mode	4	0.036 (0.577)	0.955
TNFRSF11A	Frequency of friend/family visits	IVW	21	0.203 (0.129)	0.116

TNFRSF11A	Frequency of friend/family visits	MR Egger	21	0.839 (0.698)	0.244
TNFRSF11A	Frequency of friend/family visits	Weighted median	21	0.130 (0.151)	0.389
TNFRSF11A	Frequency of friend/family visits	Maximum likelihood	21	0.210 (0.103)	0.042
TNFRSF11A	Frequency of friend/family visits	Weighted mode	21	-0.036 (0.300)	0.906
TNFRSF11A	MTAG	IVW	15	0.026 (0.157)	0.868
TNFRSF11A	MTAG	MR Egger	15	1.288 (0.760)	0.114
TNFRSF11A	MTAG	Weighted median	15	0.101 (0.179)	0.572
TNFRSF11A	MTAG	Maximum likelihood	15	0.027 (0.139)	0.845
TNFRSF11A	MTAG	Weighted mode	15	0.115 (0.264)	0.671
VSIG2	Number in household	IVW	4	0.436 (0.428)	0.308
VSIG2	Number in household	MR Egger	4	0.397 (1.285)	0.787
VSIG2	Number in household	Weighted median	4	0.397 (0.488)	0.415
VSIG2	Number in household	Maximum likelihood	4	0.442 (0.433)	0.307
VSIG2	Number in household	Weighted mode	4	0.297 (0.776)	0.728
VSIG2	Frequency of friend/family visits	IVW	21	0.035 (0.109)	0.749
VSIG2	Frequency of friend/family visits	MR Egger	21	0.773 (0.591)	0.207
VSIG2	Frequency of friend/family visits	Weighted median	21	-0.071 (0.157)	0.649
VSIG2	Frequency of friend/family visits	Maximum likelihood	21	0.036 (0.110)	0.743
VSIG2	Frequency of friend/family visits	Weighted mode	21	-0.199 (0.295)	0.508
VSIG2	MTAG	IVW	15	-0.261 (0.146)	0.075
VSIG2	MTAG	MR Egger	15	0.486 (0.729)	0.517
VSIG2	MTAG	Weighted median	15	-0.134 (0.194)	0.491
VSIG2	MTAG	Maximum likelihood	15	-0.257 (0.148)	0.083
VSIG2	MTAG	Weighted mode	15	-0.033 (0.352)	0.927
PRSS8	Number in household	IVW	4	-0.353 (0.430)	0.412
PRSS8	Number in household	MR Egger	4	-1.070 (1.489)	0.547
PRSS8	Number in household	Weighted median	4	-0.737 (0.522)	0.158
PRSS8	Number in household	Maximum likelihood	4	-0.361 (0.422)	0.392
PRSS8	Number in household	Weighted mode	4	-0.807 (0.711)	0.339
PRSS8	Frequency of friend/family visits	IVW	21	0.088 (0.131)	0.500
PRSS8	Frequency of friend/family visits	MR Egger	21	0.245 (0.727)	0.739
PRSS8	Frequency of friend/family visits	Weighted median	21	0.255 (0.159)	0.110
PRSS8	Frequency of friend/family visits	Maximum likelihood	21	0.092 (0.108)	0.393
PRSS8	Frequency of friend/family visits	Weighted mode	21	0.447 (0.348)	0.214
PRSS8	MTAG	IVW	15	0.137 (0.142)	0.337
PRSS8	MTAG	MR Egger	15	0.543 (0.727)	0.468

PRSS8	MTAG	Weighted median	15	0.306 (0.194)	0.114
PRSS8	MTAG	Maximum likelihood	15	0.142 (0.144)	0.324
PRSS8	MTAG	Weighted mode	15	0.430 (0.337)	0.223
FGFR2	Number in household	IVW	4	0.107 (0.832)	0.897
FGFR2	Number in household	MR Egger	4	-3.064 (1.940)	0.255
FGFR2	Number in household	Weighted median	4	-0.203 (0.578)	0.726
FGFR2	Number in household	Maximum likelihood	4	0.118 (0.442)	0.789
FGFR2	Number in household	Weighted mode	4	-0.451 (0.795)	0.610
FGFR2	Frequency of friend/family visits	IVW	21	0.102 (0.113)	0.365
FGFR2	Frequency of friend/family visits	MR Egger	21	0.189 (0.628)	0.767
FGFR2	Frequency of friend/family visits	Weighted median	21	0.048 (0.156)	0.758
FGFR2	Frequency of friend/family visits	Maximum likelihood	21	0.105 (0.109)	0.332
FGFR2	Frequency of friend/family visits	Weighted mode	21	-0.004 (0.277)	0.989
FGFR2	MTAG	IVW	15	0.216 (0.152)	0.155
FGFR2	MTAG	MR Egger	15	1.390 (0.716)	0.074
FGFR2	MTAG	Weighted median	15	0.334 (0.203)	0.099
FGFR2	MTAG	Maximum likelihood	15	0.221 (0.146)	0.130
FGFR2	MTAG	Weighted mode	15	0.382 (0.424)	0.383
KIM1 (HAVCR1)	Number in household	IVW	4	-0.346 (0.372)	0.352
KIM1 (HAVCR1)	Number in household	MR Egger	4	-1.124 (1.269)	0.469
KIM1 (HAVCR1)	Number in household	Weighted median	4	-0.470 (0.450)	0.296
KIM1 (HAVCR1)	Number in household	Maximum likelihood	4	-0.353 (0.377)	0.349
KIM1 (HAVCR1)	Number in household	Weighted mode	4	-0.590 (0.688)	0.454
KIM1 (HAVCR1)	Frequency of friend/family visits	IVW	21	0.186 (0.096)	0.052
KIM1 (HAVCR1)	Frequency of friend/family visits	MR Egger	21	0.621 (0.524)	0.250
KIM1 (HAVCR1)	Frequency of friend/family visits	Weighted median	21	0.197 (0.133)	0.138
KIM1 (HAVCR1)	Frequency of friend/family visits	Maximum likelihood	21	0.195 (0.095)	0.040
KIM1 (HAVCR1)	Frequency of friend/family visits	Weighted mode	21	0.244 (0.265)	0.368
KIM1 (HAVCR1)	MTAG	IVW	15	-0.064 (0.158)	0.687
KIM1 (HAVCR1)	MTAG	MR Egger	15	-0.430 (0.801)	0.601
KIM1 (HAVCR1)	MTAG	Weighted median	15	-0.080 (0.172)	0.642
KIM1 (HAVCR1)	MTAG	Maximum likelihood	15	-0.062 (0.128)	0.626
KIM1 (HAVCR1)	MTAG	Weighted mode	15	-0.058 (0.254)	0.822
REN	Number in household	IVW	4	0.127 (0.426)	0.766
REN	Number in household	MR Egger	4	0.285 (1.325)	0.849
REN	Number in household	Weighted median	4	0.155 (0.511)	0.762

REN	Number in household	Maximum likelihood	4	0.129 (0.430)	0.764
REN	Number in household	Weighted mode	4	0.219 (0.778)	0.797
REN	Frequency of friend/family visits	IVW	21	0.022 (0.110)	0.840
REN	Frequency of friend/family visits	MR Egger	21	0.300 (0.606)	0.626
REN	Frequency of friend/family visits	Weighted median	21	-0.134 (0.154)	0.385
REN	Frequency of friend/family visits	Maximum likelihood	21	0.023 (0.110)	0.833
REN	Frequency of friend/family visits	Weighted mode	21	-0.204 (0.262)	0.445
REN	MTAG	IVW	15	0.183 (0.145)	0.207
REN	MTAG	MR Egger	15	0.373 (0.725)	0.615
REN	MTAG	Weighted median	15	0.228 (0.199)	0.252
REN	MTAG	Maximum likelihood	15	0.190 (0.147)	0.197
REN	MTAG	Weighted mode	15	0.465 (0.341)	0.194
NEFL	Number in household	IVW	4	-0.001 (0.393)	0.998
NEFL	Number in household	MR Egger	4	-0.886 (1.180)	0.531
NEFL	Number in household	Weighted median	4	-0.051 (0.442)	0.908
NEFL	Number in household	Maximum likelihood	4	-0.001 (0.394)	0.998
NEFL	Number in household	Weighted mode	4	-0.141 (0.616)	0.833
NEFL	Frequency of friend/family visits	IVW	21	-0.257 (0.105)	0.014
NEFL	Frequency of friend/family visits	MR Egger	21	-0.068 (0.580)	0.907
NEFL	Frequency of friend/family visits	Weighted median	21	-0.196 (0.147)	0.183
NEFL	Frequency of friend/family visits	Maximum likelihood	21	-0.248 (0.101)	0.014
NEFL	Frequency of friend/family visits	Weighted mode	21	-0.144 (0.284)	0.619
NEFL	MTAG	IVW	15	-0.028 (0.161)	0.861
NEFL	MTAG	MR Egger	15	-0.579 (0.821)	0.493
NEFL	MTAG	Weighted median	15	-0.159 (0.192)	0.406
NEFL	MTAG	Maximum likelihood	15	-0.028 (0.136)	0.837
NEFL	MTAG	Weighted mode	15	-0.247 (0.270)	0.376
HAOX1	Number in household	IVW	4	-0.429 (0.472)	0.364
HAOX1	Number in household	MR Egger	4	-2.625 (1.301)	0.181
HAOX1	Number in household	Weighted median	4	-0.170 (0.526)	0.746
HAOX1	Number in household	Maximum likelihood	4	-0.441 (0.440)	0.316
HAOX1	Number in household	Weighted mode	4	-0.102 (0.741)	0.899
HAOX1	Frequency of friend/family visits	IVW	21	-0.086 (0.118)	0.468
HAOX1	Frequency of friend/family visits	MR Egger	21	-0.047 (0.656)	0.944
HAOX1	Frequency of friend/family visits	Weighted median	21	0.047 (0.154)	0.759
HAOX1	Frequency of friend/family visits	Maximum likelihood	21	-0.083 (0.111)	0.458

HAOX1	Frequency of friend/family visits	Weighted mode	21	0.091 (0.270)	0.740
HAOX1	MTAG	IVW	15	0.124 (0.147)	0.399
HAOX1	MTAG	MR Egger	15	0.705 (0.735)	0.355
HAOX1	MTAG	Weighted median	15	0.139 (0.206)	0.500
HAOX1	MTAG	Maximum likelihood	15	0.128 (0.149)	0.389
HAOX1	MTAG	Weighted mode	15	0.422 (0.366)	0.268

*MTAG, multi-trait analysis of GWAS; MR, Mendelian randomization; SNP, single nucleotide polymorphism; SE, standard error.*

**Supplementary Table 2. Enrichment analysis for the identified proteins.**

<b>Term</b>	<b>P value</b>	<b>FDR-adjusted P</b>	<b>Genes</b>	<b>dataset</b>
Death Receptor Activity (GO:0005035)	0.0001	0.0023	TNFRSF10B;TNFRSF10A;TNFRSF11A	GO_MF
CASP8 Activity Is Inhibited R-HSA-5218900	0.0017	0.0209	TNFRSF10B;TNFRSF10A	REACTOME
Caspase Activation Via Death Receptors In Presence Of Ligand R-HSA-140534	0.0017	0.0209	TNFRSF10B;TNFRSF10A	REACTOME
Caspase Activation Via Extrinsic Apoptotic Signaling Pathway R-HSA-5357769	0.0017	0.0209	TNFRSF10B;TNFRSF10A	REACTOME
Dimerization Of Procaspace-8 R-HSA-69416	0.0017	0.0209	TNFRSF10B;TNFRSF10A	REACTOME
RIPK1-mediated Regulated Necrosis R-HSA-5213460	0.0017	0.0209	TNFRSF10B;TNFRSF10A	REACTOME
Regulation Of Necroptotic Cell Death R-HSA-5675482	0.0017	0.0209	TNFRSF10B;TNFRSF10A	REACTOME
TP53 Regulates Transcription Of Death Receptors And Ligands R-HSA-6803211	0.0017	0.0209	TNFRSF10B;TNFRSF10A	REACTOME
TRAIL Signaling R-HSA-75158	0.0017	0.0209	TNFRSF10B;TNFRSF10A	REACTOME
Death Receptor Signaling R-HSA-73887	0.0051	0.0489	TNFRSF10B;TNFRSF10A	REACTOME
Regulated Necrosis R-HSA-5218859	0.0051	0.0489	TNFRSF10B;TNFRSF10A	REACTOME
p53 signaling pathway	0.0017	0.0539	TNFRSF10B;TNFRSF10A	KEGG
TP53 Regulates Transcription Of Cell Death Genes R-HSA-5633008	0.0099	0.0867	TNFRSF10B;TNFRSF10A	REACTOME
Kidney - Cortex Female 60-69 Up	0.0017	0.0993	REN;HAVCR1	GTE <sub>x</sub>
Kidney - Cortex Male 30-39 Up	0.0051	0.0993	REN;HAVCR1	GTE <sub>x</sub>
Kidney - Cortex Male 70-79 Up	0.0051	0.0993	REN;HAVCR1	GTE <sub>x</sub>
Minor Salivary Gland Female 20-29 Up	0.0099	0.0993	TNFRSF11A;PRSS8	GTE <sub>x</sub>
Minor Salivary Gland Male 20-29 Up	0.0099	0.0993	MMP12;TNFRSF11A	GTE <sub>x</sub>
Minor Salivary Gland Male 30-39 Up	0.0099	0.0993	TNFRSF11A;PRSS8	GTE <sub>x</sub>
Influenza A	0.0099	0.1001	TNFRSF10B;TNFRSF10A	KEGG
Natural killer cell mediated cytotoxicity	0.0162	0.1001	TNFRSF10B;TNFRSF10A	KEGG
Necroptosis	0.0162	0.1001	TNFRSF10B;TNFRSF10A	KEGG
Salmonella infection	0.0162	0.1001	TNFRSF10B;TNFRSF10A	KEGG



Apoptosis	0.0236	0.1047	TNFRSF10B;TNFRSF10A	KEGG
Pathogenic Escherichia coli infection	0.0236	0.1047	TNFRSF10B;TNFRSF10A	KEGG
Brain - Cortex Female 50-59 Up	0.0435	0.1278	NEFL	GTE <sub>x</sub>
Brain - Cortex Male 30-39 Up	0.0435	0.1278	NEFL	GTE <sub>x</sub>
Brain - Cortex Male 70-79 Up	0.0435	0.1278	NEFL	GTE <sub>x</sub>
Brain - Frontal Cortex (BA9) Male 20-29 Up	0.0435	0.1278	NEFL	GTE <sub>x</sub>
Brain - Frontal Cortex (BA9) Male 40-49 Up	0.0435	0.1278	NEFL	GTE <sub>x</sub>
Brain - Frontal Cortex (BA9) Male 50-59 Up	0.0435	0.1278	NEFL	GTE <sub>x</sub>
Brain - Frontal Cortex (BA9) Male 60-69 Up	0.0435	0.1278	NEFL	GTE <sub>x</sub>
Brain - Frontal Cortex (BA9) Male 70-79 Up	0.0435	0.1278	NEFL	GTE <sub>x</sub>
Brain - Spinal Cord (Cervical C-1) Female 40-49 Up	0.0435	0.1278	FGFR2	GTE <sub>x</sub>
Kidney - Cortex Male 40-49 Up	0.0435	0.1278	REN	GTE <sub>x</sub>
Kidney - Cortex Male 50-59 Up	0.0435	0.1278	REN	GTE <sub>x</sub>
Activation Of NF-kappaB-inducing Kinase Activity (GO:0007250)	0.0017	0.1361	TNFRSF10B;TNFRSF10A	GO_BP
NIK/NF-kappaB Signaling (GO:0038061)	0.0017	0.1361	TNFRSF10B;TNFRSF10A	GO_BP
TRAIL-activated Apoptotic Signaling Pathway (GO:0036462)	0.0017	0.1361	TNFRSF10B;TNFRSF10A	GO_BP
Cellular Response To Mechanical Stimulus (GO:0071260)	0.0051	0.1361	TNFRSF10B;TNFRSF10A	GO_BP
Extrinsic Apoptotic Signaling Pathway (GO:0097191)	0.0099	0.1361	TNFRSF10B;TNFRSF10A	GO_BP
Extrinsic Apoptotic Signaling Pathway Via Death Domain Receptors (GO:0008625)	0.0099	0.1361	TNFRSF10B;TNFRSF10A	GO_BP
Negative Regulation Of Cell-Matrix Adhesion (GO:0001953)	0.0099	0.1361	MMP12;ACVRL1	GO_BP
Supramolecular Fiber Organization (GO:0097435)	0.0162	0.1361	NEFL;PRSS8	GO_BP
Positive Regulation Of Transcription By RNA Polymerase II (GO:0045944)	0.0256	0.1361	MMP12;ACVRL1;FGFR2	GO_BP
Activation Of Protein Kinase Activity (GO:0032147)	0.0323	0.1361	TNFRSF10B;TNFRSF10A	GO_BP
Apoptotic Process (GO:0006915)	0.0323	0.1361	TNFRSF10B;TNFRSF10A	GO_BP
Actin Filament Organization (GO:0007015)	0.0435	0.1361	PRSS8	GO_BP
Activation Of Adenylate Cyclase Activity (GO:0007190)	0.0435	0.1361	PRSS8	GO_BP

Anterograde Axonal Transport (GO:0008089)	0.0435	0.1361	NEFL	GO_BP
Bone Morphogenesis (GO:0060349)	0.0435	0.1361	FGFR2	GO_BP
Cardiac Muscle Tissue Morphogenesis (GO:0055008)	0.0435	0.1361	FGFR2	GO_BP
Cyclic-Nucleotide-Mediated Signaling (GO:0019935)	0.0435	0.1361	PRSS8	GO_BP
Defense Response To Tumor Cell (GO:0002357)	0.0435	0.1361	TNFRSF10B	GO_BP
Digestive System Development (GO:0055123)	0.0435	0.1361	FGFR2	GO_BP
Digestive Tract Development (GO:0048565)	0.0435	0.1361	FGFR2	GO_BP
Digestive Tract Morphogenesis (GO:0048546)	0.0435	0.1361	FGFR2	GO_BP
Ear Morphogenesis (GO:0042471)	0.0435	0.1361	FGFR2	GO_BP
Embryonic Cranial Skeleton Morphogenesis (GO:0048701)	0.0435	0.1361	FGFR2	GO_BP
Embryonic Digestive Tract Development (GO:0048566)	0.0435	0.1361	FGFR2	GO_BP
Embryonic Organ Morphogenesis (GO:0048562)	0.0435	0.1361	FGFR2	GO_BP
Embryonic Skeletal System Morphogenesis (GO:0048704)	0.0435	0.1361	FGFR2	GO_BP
Endothelial Cell Differentiation (GO:0045446)	0.0435	0.1361	ACVRL1	GO_BP
Epithelial Tube Branching Involved In Lung Morphogenesis (GO:0060441)	0.0435	0.1361	FGFR2	GO_BP
Epithelial Tube Formation (GO:0072175)	0.0435	0.1361	FGFR2	GO_BP
Epithelium Development (GO:0060429)	0.0435	0.1361	FGFR2	GO_BP
Exocrine System Development (GO:0035272)	0.0435	0.1361	FGFR2	GO_BP
Forebrain Neuron Development (GO:0021884)	0.0435	0.1361	FGFR2	GO_BP
Gland Morphogenesis (GO:0022612)	0.0435	0.1361	FGFR2	GO_BP
Glycoprotein Catabolic Process (GO:0006516)	0.0435	0.1361	MMP12	GO_BP
Inner Ear Morphogenesis (GO:0042472)	0.0435	0.1361	FGFR2	GO_BP
Intermediate Filament Bundle Assembly (GO:0045110)	0.0435	0.1361	NEFL	GO_BP
Intermediate Filament Organization (GO:0045109)	0.0435	0.1361	NEFL	GO_BP
Intrinsic Apoptotic Signaling Pathway In Response To Endoplasmic Reticulum Stress (GO:0070059)	0.0435	0.1361	TNFRSF10B	GO_BP
Lymphatic Endothelial Cell Differentiation (GO:0060836)	0.0435	0.1361	ACVRL1	GO_BP

Mesenchymal Cell Differentiation (GO:0048762)	0.0435	0.1361	FGFR2	GO_BP
Mesenchyme Morphogenesis (GO:0072132)	0.0435	0.1361	ACVRL1	GO_BP
Morphogenesis Of An Epithelium (GO:0002009)	0.0435	0.1361	FGFR2	GO_BP
Multinuclear Osteoclast Differentiation (GO:0072674)	0.0435	0.1361	TNFRSF11A	GO_BP
Negative Regulation Of Keratinocyte Proliferation (GO:0010839)	0.0435	0.1361	FGFR2	GO_BP
Positive Regulation Of Adenylate Cyclase Activity (GO:0045762)	0.0435	0.1361	PRSS8	GO_BP
Positive Regulation Of Bone Resorption (GO:0045780)	0.0435	0.1361	TNFRSF11A	GO_BP
Positive Regulation Of Cardiac Muscle Cell Proliferation (GO:0060045)	0.0435	0.1361	FGFR2	GO_BP
Positive Regulation Of Cardiac Muscle Tissue Growth (GO:0055023)	0.0435	0.1361	FGFR2	GO_BP
Positive Regulation Of Cell Division (GO:0051781)	0.0435	0.1361	FGFR2	GO_BP
Positive Regulation Of Epithelial Cell Proliferation Involved In Wound Healing (GO:0060054)	0.0435	0.1361	MMP12	GO_BP
Positive Regulation Of Fever Generation (GO:0031622)	0.0435	0.1361	TNFRSF11A	GO_BP
Positive Regulation Of Leukocyte Activation (GO:0002696)	0.0435	0.1361	HAVCR1	GO_BP
Positive Regulation Of Lipase Activity (GO:0060193)	0.0435	0.1361	FGFR2	GO_BP
Positive Regulation Of Mast Cell Activation (GO:0033005)	0.0435	0.1361	HAVCR1	GO_BP
Positive Regulation Of Mesenchymal Cell Proliferation (GO:0002053)	0.0435	0.1361	FGFR2	GO_BP
Positive Regulation Of Osteoclast Differentiation (GO:0045672)	0.0435	0.1361	TNFRSF11A	GO_BP
Positive Regulation Of Phospholipase Activity (GO:0010518)	0.0435	0.1361	FGFR2	GO_BP
Positive Regulation Of Sodium Ion Transport (GO:0010765)	0.0435	0.1361	PRSS8	GO_BP
Regulation Of Cardiac Muscle Cell Proliferation (GO:0060043)	0.0435	0.1361	FGFR2	GO_BP
Regulation Of DNA Metabolic Process (GO:0051052)	0.0435	0.1361	ACVRL1	GO_BP
Regulation Of Endothelial Cell-Matrix Adhesion Via Fibronectin (GO:1904904)	0.0435	0.1361	MMP12	GO_BP
Regulation Of Mesenchymal Cell Proliferation (GO:0010464)	0.0435	0.1361	FGFR2	GO_BP
Regulation Of Muscle Cell Differentiation (GO:0051147)	0.0435	0.1361	FGFR2	GO_BP
Regulation Of Phospholipase Activity (GO:0010517)	0.0435	0.1361	FGFR2	GO_BP

Regulation Of Smooth Muscle Cell Differentiation (GO:0051150)	0.0435	0.1361	FGFR2	GO_BP
Regulation Of Sodium Ion Transport (GO:0002028)	0.0435	0.1361	PRSS8	GO_BP
Response To Lipid (GO:0033993)	0.0435	0.1361	TNFRSF11A	GO_BP
Response To Peptide (GO:1901652)	0.0435	0.1361	MMP12	GO_BP
Retrograde Axonal Transport (GO:0008090)	0.0435	0.1361	NEFL	GO_BP
Skeletal System Morphogenesis (GO:0048705)	0.0435	0.1361	FGFR2	GO_BP
Tumor Necrosis Factor-Mediated Signaling Pathway (GO:0033209)	0.0435	0.1361	TNFRSF11A	GO_BP
Vasculature Development (GO:0001944)	0.0435	0.1361	ACVRL1	GO_BP
Venous Blood Vessel Development (GO:0060841)	0.0435	0.1361	ACVRL1	GO_BP
Ventricular Cardiac Muscle Tissue Development (GO:0003229)	0.0435	0.1361	FGFR2	GO_BP
Ventricular Cardiac Muscle Tissue Morphogenesis (GO:0055010)	0.0435	0.1361	FGFR2	GO_BP
Wound Healing, Spreading Of Epidermal Cells (GO:0035313)	0.0435	0.1361	MMP12	GO_BP
cAMP-mediated Signaling (GO:0019933)	0.0435	0.1361	PRSS8	GO_BP
Apoptosis R-HSA-109581	0.0236	0.1439	TNFRSF10B;TNFRSF10A	REACTOME
Transcriptional Regulation By TP53 R-HSA-3700989	0.0236	0.1439	TNFRSF10B;TNFRSF10A	REACTOME
Cell Surface Interactions At Vascular Wall R-HSA-202733	0.0323	0.1439	TNFRSF10B;TNFRSF10A	REACTOME
Programmed Cell Death R-HSA-5357801	0.0323	0.1439	TNFRSF10B;TNFRSF10A	REACTOME
Assembly And Cell Surface Presentation Of NMDA Receptors R-HSA-9609736	0.0435	0.1439	NEFL	REACTOME
CREB1 Phosphorylation Thru NMDA Receptor-Mediated Activation Of RAS Signaling R-HSA-442742	0.0435	0.1439	NEFL	REACTOME
Cardiac Conduction R-HSA-5576891	0.0435	0.1439	MMP12	REACTOME
Degradation Of Cysteine And Homocysteine R-HSA-1614558	0.0435	0.1439	VSIG2	REACTOME
FGFR2b Ligand Binding And Activation R-HSA-190377	0.0435	0.1439	FGFR2	REACTOME
Metabolism Of Ingested SeMet, Sec, MeSec Into H2Se R-HSA-2408508	0.0435	0.1439	VSIG2	REACTOME
Muscle Contraction R-HSA-397014	0.0435	0.1439	MMP12	REACTOME
Negative Regulation Of NMDA Receptor-Mediated Neuronal Transmission R-HSA-9617324	0.0435	0.1439	NEFL	REACTOME

Physiological Factors R-HSA-5578768	0.0435	0.1439	MMP12	REACTOME
Ras Activation Upon Ca <sup>2+</sup> Influx Thru NMDA Receptor R-HSA-442982	0.0435	0.1439	NEFL	REACTOME
Selenoamino Acid Metabolism R-HSA-2408522	0.0435	0.1439	VSIG2	REACTOME
Signaling By FGFR2 IIIa TM R-HSA-8851708	0.0435	0.1439	FGFR2	REACTOME
Sulfur Amino Acid Metabolism R-HSA-1614635	0.0435	0.1439	VSIG2	REACTOME
Unblocking Of NMDA Receptors, Glutamate Binding And Activation R-HSA-438066	0.0435	0.1439	NEFL	REACTOME
Cytokine-cytokine receptor interaction	0.0379	0.1468	ACVRL1;TNFRSF10B;TNFRSF10A;TNFRSF11A	KEGG
Cilium (GO:0005929)	0.0435	0.1565	HAVCR1	GO_CC
Excitatory Synapse (GO:0060076)	0.0435	0.1565	FGFR2	GO_CC
Intermediate Filament (GO:0005882)	0.0435	0.1565	NEFL	GO_CC
Intermediate Filament Cytoskeleton (GO:0045111)	0.0435	0.1565	NEFL	GO_CC
Motile Cilium (GO:0031514)	0.0435	0.1565	HAVCR1	GO_CC
Serine-Type Peptidase Activity (GO:0008236)	0.0236	0.1609	MMP12;PRSS8	GO_MF
Activin Receptor Activity (GO:0017002)	0.0435	0.1609	ACVRL1	GO_MF
Adenylate Cyclase Binding (GO:0008179)	0.0435	0.1609	PRSS8	GO_MF
Aspartic-Type Endopeptidase Activity (GO:0004190)	0.0435	0.1609	REN	GO_MF
Aspartic-Type Peptidase Activity (GO:0070001)	0.0435	0.1609	REN	GO_MF
BMP Receptor Activity (GO:0098821)	0.0435	0.1609	ACVRL1	GO_MF
Transforming Growth Factor Beta Receptor Activity (GO:0005024)	0.0435	0.1609	ACVRL1	GO_MF
Transmembrane Receptor Protein Serine/Threonine Kinase Activity (GO:0004675)	0.0435	0.1609	ACVRL1	GO_MF
Tumor Necrosis Factor Receptor Activity (GO:0005031)	0.0435	0.1609	TNFRSF11A	GO_MF

*GO\_MF, Gene Ontology – Molecular Function; GTE<sub>x</sub>, Genotype-Tissue Expression; KEGG, Kyoto Encyclopedia of Genes and Genomes; REACTOME, Reactome Pathway Database. The list was filtered by  $P < 0.05$ , and terms enriched after False Discovery Rate (FDR)-correction  $P < 0.05$  were highlighted in green.*

**Supplementary Table 3. Summary information on social isolation UK Biobank GWAS datasets.**

Trait	Number in household	Frequency of friend/family visits	MTAG of three GWAS on perceived loneliness, living alone and ability to confide
Year	2018	2018	2018
Open GWAS ID	ukb-b-5445	ukb-b-5379	-
Consortium	MRC-IEU	MRC-IEU	Day et al 2018
Case, n	-	-	Loneliness: 80,134; Living alone: 2426; Ability to confide: 64,505
Control, n	-	-	Loneliness: 364,890; Living alone: 286,524; Ability to confide: 238,062
Sample size, n	459,988	459,830	487,647
SNP, n	9,851,867	9,851,867	7,723,212

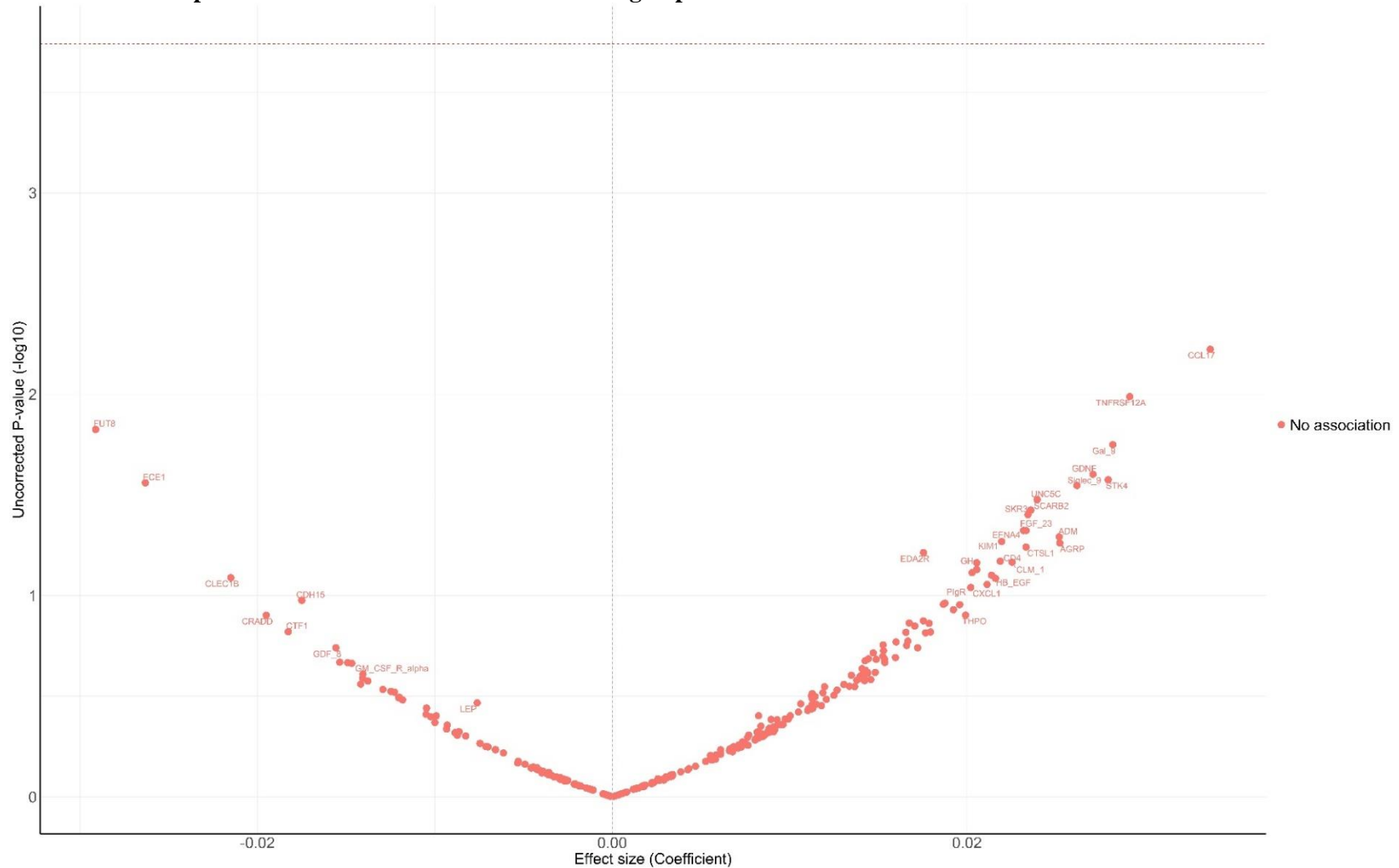
MTAG software to combine the three GWAS datasets on **perceived loneliness, living alone and ability to confide**.

<b>Case ascertainment</b>	Continuous	Categorical Ordered: 1 = Almost daily 2 = 2 – 4 times a week 3 = About once a week 4 = About once a month 5 = Once every few months 6 = Never or almost never; or no friends/family outside household	<b>Perceived loneliness:</b> 'Do you often feel lonely?', as if individuals answered 'yes' (recorded as cases) or 'no' (controls).
			<b>Living alone:</b> a composite variable based on the questions 'Including yourself, how many people are living together in your household?' and 'How often do you visit friends or family or have them visit you?' (cases were defined as those who lived alone and who indicated that they either never visited or had no friends or family outside their household; controls were defined as those who either did not live alone or had friends who visited at least once a week).
			<b>Ability to confide:</b> a variable representing the quality of social interactions 'How often are you able to confide in someone close to you?' (cases were defined as those who answered, 'Never or almost never', controls were defined as those who answered 'Almost daily').

*GWAS, genome wide association study; MTAG, Multi-trait analysis of GWAS; SNP, single-nucleotide polymorphism.*

## Supplementary Figures

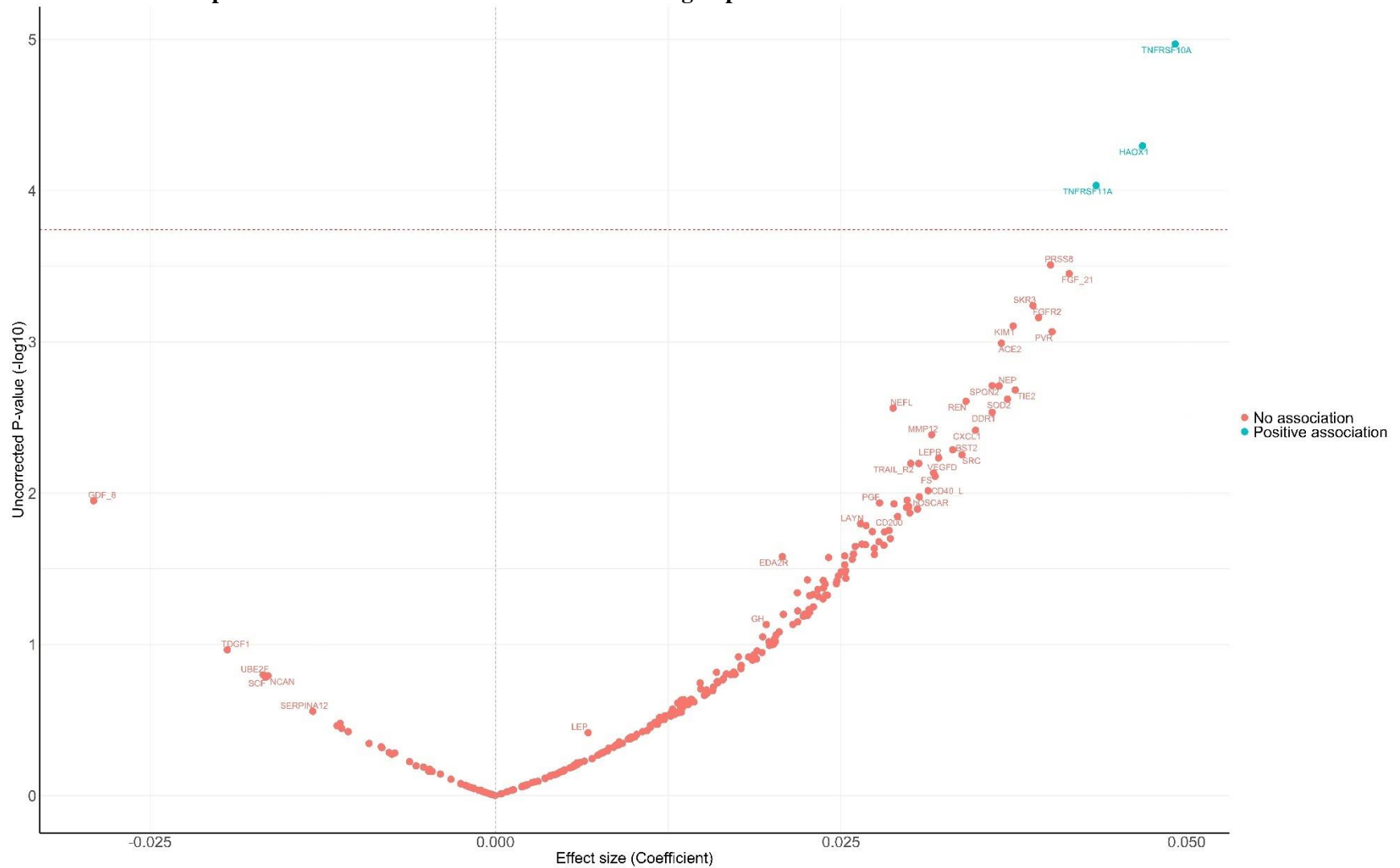
Supplementary Figure 1. Volcano plot showing fully adjusted coefficient (x axis) and two-sided uncorrected P values (y axis) for the association between protein concentration with loneliness using imputed data.



Coefficient from linear regression models adjusted for age, sex, education, ethnicity, education, wealth quintile, alcohol consumption, smoking, body mass index, and physical activity.

Proteins above the horizontal dotted red line were significantly associated with loneliness FDR-corrected p-value <0.05.

**Supplementary Figure 2. Volcano plot showing fully adjusted coefficient (x axis) and two-sided uncorrected P values (y axis) for the association between protein concentration with social isolation using imputed data.**

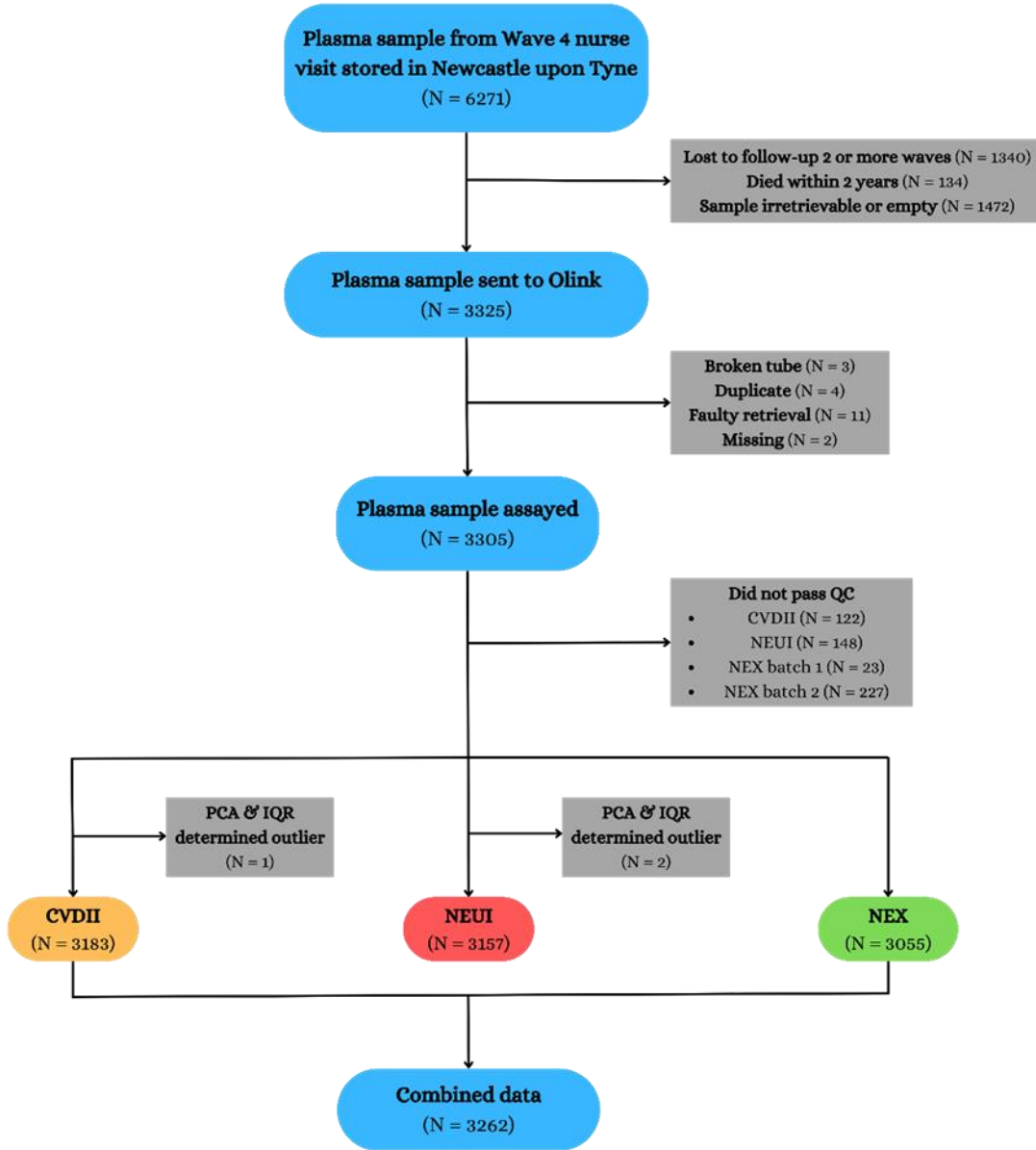


*Coefficient from linear regression models adjusted for age, sex, education, ethnicity, education, wealth quintile, alcohol consumption, smoking, body mass index, and physical activity.*

*Proteins above the horizontal dotted red line were significantly associated with social isolation FDR-corrected  $p$ -value  $< 0.05$ .*



**Supplementary Figure 3. Participant selection for proteomics profiling in ELSA.**



*QC, quality control; PCA, principal component analysis; IQR, interquartile range; CVDII, cardiovascular disease 2 Olink panel; NEUI, neurology Olink panel; NEX, neurology exploratory Olink panel.*