

1 **A randomised controlled trial of interventions to promote adoption of physical activity in adults**
2 **with severe mental illness**

3 Justin J. Chapman^{1,2,3}

4 Aaron Miatke^{4,5}

5 Dorothea Dumuid^{4,5}

6 Jairo Migueles⁶

7 Shuichi Suetani^{7,8,9}

8 Nicole Korman^{2,10}

9 Mike Trott^{2,7}

10 Jacqueline Byrne^{2,3}

11 Dan Siskind^{2,7,10}

12 Donni Johnston²

13 Jeanette Sewell²

14 Michael Breakspear^{3,11,12}

15 Sue Patterson^{13,14}

16 1. Griffith University, Centre for Mental Health, Brisbane, Queensland, Australia

17 2. Metro South Health, Addiction and Mental Health Service, Brisbane, Queensland,
18 Australia

19 3. QIMR Berghofer Medical Research Institute, Brisbane, Queensland, Australia.

20 4. Alliance for Research in Exercise, Nutrition and Activity, Allied Health and Human
21 Performance, University of South Australia, Adelaide, Australia

22 5. Centre for Adolescent Health, Murdoch Children's Research Institute, Melbourne,
23 Australia

24 6. University of Granada, Faculty of physical activity and Sport Sciences, Granada, Spain.

25 7. Queensland Centre for Mental Health Research, Brisbane, Queensland, Australia

26 8. Institute for Urban Indigenous Health, Windsor, Australia

27 9. School of Medicine and Dentistry, Griffith University, Queensland, Australia.

28 10. School of Medicine, The University of Queensland, Queensland, Australia

29 11. School of Psychological Sciences, College of Engineering, Science and the Environment,
30 University of Newcastle, Callaghan, New South Wales, Australia

31 12. School of Medicine and Public Health, College of Health, Medicine and Wellbeing,
32 University of Newcastle, Callaghan, New South Wales, Australia

33 13. Critical Care Research Group, The Prince Charles Hospital, Queensland, Australia

34 14. School of Dentistry, University of Queensland, Brisbane City, Queensland, Australia

35

36 **Correspondence to:**

37 Justin Chapman

38 Griffith University

39 Australia, Queensland, Brisbane, 4006

40 Email: justinjchapman@gmail.com

41 **ABSTRACT**

42 *Background and aims:* Adults with severe mental illness (SMI) have lower physical activity (PA) than
43 the general population. Supervised exercise interventions provide high support but may not effectively
44 promote motivation, which is important for behaviour change. Motivational strategies such as PA
45 counselling may target motivation more directly; however, the effectiveness in people with SMI is
46 unclear.

47 *Methods:* This was a randomised controlled trial of interventions designed to promote PA in adults
48 with SMI. Participants were randomised to either: (1) supervised exercise (GYM), or (2) motivational
49 counselling and self-monitoring using fitness trackers (MOT). Group sessions were once/week over 8-
50 weeks. The primary outcome was time spent in moderate-to-vigorous PA (MVPA) assessed using
51 GENEActiv accelerometers worn continuously. Change in MVPA was assessed using the cumulative
52 change from baseline, and as a composition of light activity, sedentary behaviour, and sleep.

53 *Results:* Sixty-four participants were allocated (63% male, 82% overweight/obese, 59% psychotic
54 disorder). Accelerometer-derived MVPA increased for the MOT group between baseline and post-
55 intervention, and the cumulative sum of change in MVPA from baseline in the MOT group was
56 higher than the GYM group. Compositional analyses showed stable weekly activity profiles, with no
57 significant changes attributable to group allocation.

58 *Conclusions:* The cumulative change in MVPA was higher for MOT than GYM; however,
59 compositional analyses that considers MVPA as a composition of other daily behaviours showed no
60 change in composition over the intervention period. Exercise interventions should incorporate
61 motivational strategies and supervised exercise; future research should investigate behaviour change
62 interventions with longer durations and more frequent sessions.

63 *Registration details:* The trial is registered under the Australian and New Zealand Clinical Trial
64 Registry (ACTRN12617001017314).

65

66 INTRODUCTION

67 Severe mental illness (SMI) is characterised by significant functional impairment (Ruggeri et al.,
68 2000), and typical diagnoses including psychotic disorders, bipolar disorder, and major depressive
69 disorder. People with SMI experience a 10-20 year shorter life expectancy than the general population
70 which is largely caused by preventable cardiometabolic conditions (Walker et al., 2015): people with
71 SMI are at 2-3 times higher risk of developing diabetes and cardiovascular disease compared with the
72 general population (Firth et al., 2019). Physical activity (PA) and exercise (structured PA to enhance
73 fitness) can help prevent and manage cardiometabolic conditions (Lavie et al., 2019). Supervised
74 exercise interventions, in which a health professional provides instruction for exercise, can support
75 people to exercise (Alexandratos et al., 2012) and are feasible for people with SMI, with reported
76 dropout rates of exercise trials being comparable to psychological therapies (Cella et al., 2023) and
77 medication trials (Leucht et al., 2012). However, exercise professionals are not routinely employed in
78 public mental health services, and accessing professional exercise support in the community may be
79 difficult for people with SMI (Firth et al., 2016). Further, it is unclear how supervised exercise
80 influences behaviour change outside supervised sessions and once supervised support ceases. PA
81 counselling may be a more accessible form of exercise support that addresses motivation for PA,
82 which may support longer term behaviour change (Vancampfort et al., 2015).

83 Lifestyle counselling or coaching programs utilise motivational approaches to enhance self-awareness
84 and capabilities to make positive changes, and are commonly founded on goal-setting theory and
85 other behaviour change frameworks (Frates et al., 2011). There are numerous behaviour change
86 techniques (BCTs) that can be utilised (Michie, Ashford, et al., 2011), and evidence suggests that
87 interventions involving self-monitoring combined with other self-regulatory techniques (e.g., goal
88 setting) may be more effective than interventions without these techniques (Greaves et al., 2011;
89 Michie et al., 2009). PA counselling programs may be more easily implemented in routine mental
90 health care because of lower need for dedicated space or equipment, and can be delivered by a wider
91 variety of health professionals (Lee et al., 2014; Temmingh et al., 2013). Reviews of PA counselling
92 have demonstrated improved health outcomes in people with chronic health conditions (O'Halloran et

93 al., 2014), and preliminary evidence indicates potential for increasing PA in people SMI (Ashdown-
94 Franks et al., 2018). While PA counselling may be less resource intensive than supervised exercise, it
95 is unclear whether counselling approaches are as effective as supervised exercise for facilitating
96 behaviour change in people with SMI. Comparing supervised exercise and counselling approaches
97 could inform the design of PA interventions for this group.

98 The primary aim of this study was to compare the efficacy of two interventions to promote PA in
99 people with SMI: a supervised exercise intervention, and a motivational PA counselling intervention.
100 The primary outcome was accelerometer-derived moderate-to-vigorous physical activity (MVPA). A
101 secondary aim was to compare the impact of the interventions on motivation for PA.

102 **METHODS AND ANALYSIS**

103 **Study design**

104 This was a pre-registered two-arm, parallel group, randomised controlled trial (RCT) of interventions
105 designed to promote adoption and maintenance of PA among adults with SMI. Ethical approval was
106 granted by the Royal Brisbane Women's Hospital Human Research Ethics Committee
107 (HREC/17/QRBW/302); the trial was registered under the Australian and New Zealand Clinical Trial
108 Registry (ACTRN12617001017314).

109 **Setting and participants**

110 Participants were recruited from public mental health service teams (Metro North Mental Health, and
111 Metro South Addictions and Mental Health in Brisbane, Australia) which provide outpatient care for
112 people with SMI. The study was promoted at clinical team meetings, and staff were asked to refer
113 potentially eligible individuals from October 2017 to January 2020. Inclusion criteria were aged 18-65
114 years and sufficiently fluent in English to provide informed consent. Exclusion criteria were: i)
115 receiving treatment for an eating disorder (because exercise can be contraindicated for some eating
116 disorders); and ii) exceeding physical activity guidelines of more than 300 minutes of self-reported
117 MVPA in the previous week. Screening involved assessment of PA over the phone using an adapted
118 version of the Active Australia questionnaire (Australian Institute of Health and Welfare, 2004),
119 which asked about time spent in walking, moderate and vigorous activities in the previous week.

120 Eligible individuals were invited to the study venue (community facilities PCYC Queensland, a not-
121 for-profit sports and recreation organisation) to complete written informed consent and baseline
122 assessments. To ensure allocation concealment, randomisation (block size of two generated using
123 randomizer.org) was overseen by a researcher not involved with data collection (SP) and performed
124 after completion of baseline assessments.

125 **Intervention procedure**

126 The study groups were motivational PA counselling (MOT) or supervised gym-based exercise (GYM)
127 interventions. The GYM and MOT interventions were facilitated by an accredited exercise
128 physiologist (AEP) and researchers with tertiary qualifications in a health-related field (e.g.,
129 physiology, public health). Interventions were 8-weeks in duration, involving one 60-minute
130 session/week in groups of up to 10 participants. Both interventions were designed to enhance
131 capability, opportunity, and motivation for PA using intervention functions identified in the
132 Behaviour Change Wheel framework (Michie, van Stralen, et al., 2011). Specific behaviour change
133 techniques identified in the CALO-RE taxonomy (Michie, Ashford, et al., 2011) are provided in
134 Supplementary information (Table S.1). An overview of the intervention structure is provided in Fig.
135 1; a brief description is provided below.

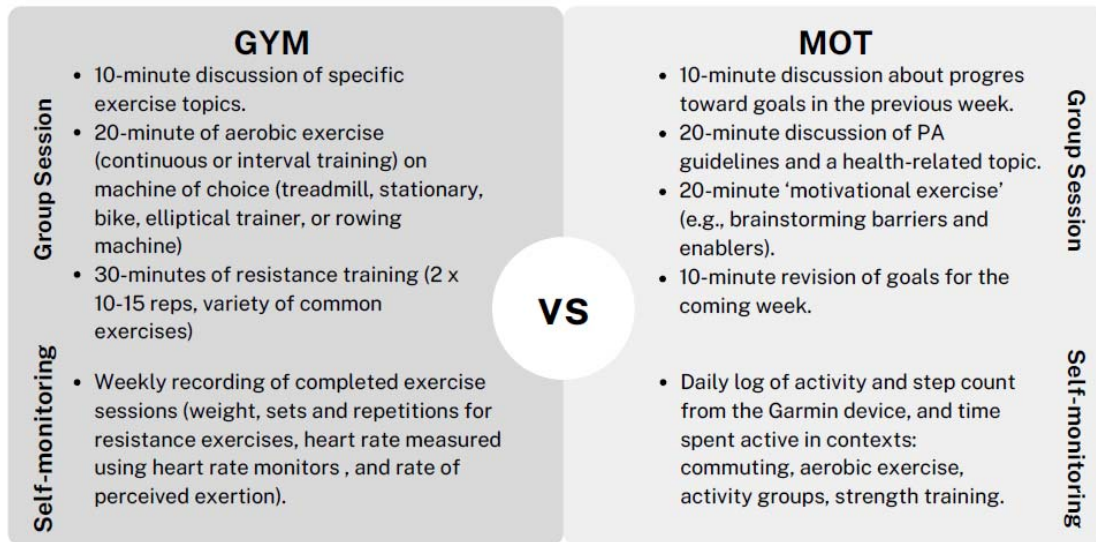
136 *Motivational intervention (MOT)*

137 Participants were provided Garmin Vivofit 3 devices which provide real-time feedback about daily
138 steps, distance walked, energy expenditure, and time spent in MVPA per week. Participants were
139 asked to keep a logbook of activity completed. Motivational sessions involved goal setting and
140 reviewing goals each week, discussion about PA guidelines and a health-related topic, and a
141 'motivational exercise' (e.g., brainstorming barriers and enablers, positive and negative self-talk).
142 Data from the Garmin devices or weekly logbooks were not used for analysis.

143 *Gym exercise intervention (GYM)*

144 Participants were provided gym memberships at no cost, and weekly group sessions were delivered by
145 an accredited exercise physiologist (AEP). The intervention was based on PCYC's 'Healthy Bodies,
146 Healthy Minds' program, which progressively introduces participants to gym-based exercises (aerobic

147 and resistance training) to promote exercise confidence in developing their exercise program based on
148 personal abilities and preferences in consultation with the AEP. Participants were asked to record
149 exercises completed each week in a logbook; however, data from the logbooks were not used for
150 analysis.



151

152 **Fig. 1:** MOT and GYM intervention structure.

153

154 **Data collection**

155 Participants were offered gift cards to the value of \$20, \$30, and \$40 Australian dollars for
156 completing assessments at baseline, post-intervention, and follow-up, respectively. Post-intervention
157 assessments were administered by a researcher blind to participant allocation. All participants were
158 invited to complete the post-intervention assessments regardless of discontinuation with the
159 intervention. Information about the assessments is provided below.

160 *Participant characteristics:* Mental health clinicians (psychiatrist or case manager) provided
161 psychiatric diagnosis at referral (ICD-10-CM codes). Education, employment, income management,
162 and sex were assessed using a health and demographic questionnaire. Intervention preference was also
163 assessed by asking 'Given what you know about the study conditions, which one would you prefer?'.
164

164 *Accelerometry:* Bodily acceleration was measured using GENEActiv Original accelerometers
165 (GENEActiv, Activinsights Ltd, Kimbolton, UK), which are waterproof devices requiring no user

166 input, and similar in appearance to a wristwatch. They do not provide feedback thereby limiting the
167 potential for reactivity (Clemes et al., 2008; Clemes et al., 2009). The sampling frequency was set at
168 10Hz to extend the battery life to up to 60 days. Data were analysed with R-package GGIR
169 (<https://cran.r-project.org/web/packages/GGIR/>) v2.1-0 (Migueles et al., 2019). Non-wear time was
170 defined using GGIR defaults as 60-minute periods of inactivity based on the in which the standard
171 deviation of at least two axes is below the noise level of the accelerometer (13 mg) and the value
172 range is lower than 50 mg; invalid data were imputed by the average at similar times of different days
173 of the monitoring period (Van Hees et al., 2013). Light, moderate and vigorous activity were defined
174 using thresholds of 40 mg (Hildebrand et al., 2017), 100 mg, and 400 mg (Hildebrand et al., 2014),
175 respectively. Time spent in MVPA was calculated by summing time classified as moderate and
176 vigorous activity. Participants were asked to wear monitors on their non-dominant wrist 24 hours/day
177 for seven consecutive days at baseline, and continually during the 8-week intervention period. Weekly
178 estimates for time spent in sleep, sedentary behaviour, light PA, and MVPA were calculated as the
179 daily average for weeks with at least three valid days of accelerometer wear time, defined as at least 8
180 hours/day of valid waking accelerometer data and less than 25% of non-wear time (Troost et al.,
181 2005). For consideration in analyses, participants self-reported their 'relative activity' at baseline
182 compared with usual, with possible responses *less than, same as, or more than usual*.

183 *Behavioural Regulation in Exercise Questionnaire (BREQ-3)*: The BREQ-3 comprises 24 items to
184 assess amotivation, and external, introjected, identified, integrated and intrinsic behavioural
185 regulations (Wilson et al., 2006); relative Autonomy Index (RAI) was calculated as the weighted sum
186 of these regulations (Koestner et al., 2008).

187 *Kessler-6 scale (K6)*: The K6 is a self-administered questionnaire with six items to assess general
188 psychological distress experienced in the past month using a 5-point Likert scale, with scores over 15
189 indicating high distress (Kessler et al., 2002).

190 *Simple Physical Activity Questionnaire (SIMPAQ)*: SIMPAQ is a researcher-administered self-report
191 questionnaire assessing time spent in bed, SB, walking, structured exercise, and average daily lifestyle

192 PA (e.g. gardening, chores, work) in the previous week. Self-reported walking and exercise were
193 summed to calculate MVPA (Rosenbaum et al., 2020).

194 **Data Analysis**

195 Consistent with CONSORT guidelines, significance testing of baseline differences between group
196 was not conducted (Moher et al., 2012). Instead, proportions and variance of participant
197 characteristics and outcome measures at baseline were examined to assess potential group differences
198 occurring by chance. Exploratory analyses involved comparing self-reported MVPA and SB with
199 accelerometer-derived estimates using Pearson correlations. Within-group differences between
200 baseline and post-intervention outcome measures were assessed using paired t-tests, and between-
201 group differences in attendance and accelerometer data quality were assessed using independent t-
202 tests. Statistical significance for all analyses was indicated at p-value <0.05 (two-sided).

203 To address the primary aim, the pre-registered outcome of cumulative change in MVPA from baseline
204 in absolute minutes/week was analysed over the 9-week observation period. To assess the cumulative
205 change in MVPA, the baseline value for each participant was subtracted from each weekly value, and
206 summed over the intervention weeks. A linear mixed effects analysis with random slope was used to
207 compare the difference between MOT and GYM groups, with intervention week, group, week*group
208 interaction, and self-reported 'relative activity' level at baseline included as fixed effects. Primary
209 analysis was conducted using an intention-to-treat sample, with missing data imputed using the group
210 mean at baseline or Last Observation Carried Forward for subsequent weeks.

211 Because of contemporary developments in the field, we conducted additional compositional analyses
212 addressing the primary aim to investigate whether composition of time spent in sleep, sedentary
213 behaviour, light PA and MVPA changed over time, and whether any changes differed by intervention
214 group allocation (Chastin et al., 2015). Because daily time spent in sleep, sedentary behaviour, light
215 PA and MVPA will always collectively sum to 24-h/day, any increase in one behaviour must be offset
216 by a decrease in other behaviours, meaning time-use is inherently co-dependent and compositional in
217 nature. In order to overcome this, compositional data analysis techniques need to be used (Dumuid et
218 al., 2018). For the compositional analysis, the 4-part movement-behaviour composition was first

219 checked for the presence of zeroes, and then expressed as a set of three isometric log ratios (ilr) with
220 the first ilr coordinate representing the pivot coordinate for MVPA reflecting the ratio of time spent in
221 MVPA to the geometric mean of all other behaviours. Collectively, the ilr coordinates retain all
222 relative information about time spent in the four behaviours yet can be used in standard multivariate
223 statistical models. For inferential analysis, a multivariate response linear mixed model with random
224 intercepts was used to investigate changes in composition (expressed as ilr coordinates) across the
225 nine timepoints. This was achieved by stacking the three ilr responses into a single outcome variable
226 along with a corresponding indicator variable (Snijders et al., 2011). Intervention week, group, and
227 week*group interaction were added as fixed effects, and random intercepts for each participant were
228 included to account for the repeated measurements on participants. The random intercepts and error
229 for the three ilrs were allowed to flexibly covary by using an unstructured covariance matrix to
230 account for the multivariate nature of the data. A type 3 multivariate analysis of variance (MANOVA)
231 F-test was then conducted on the fixed effects of the model to determine if composition changed over
232 time, by group, or if a significant group by time interaction was present. In order to aid interpretation,
233 model-based estimated for the ilrs for each group and timepoints were back-transformed into the
234 compositional space via the inverse ilr transformation and plotted.

235 To address the secondary aim, a linear mixed effects analysis with random intercept was used to
236 assess the change in motivation (as an overall Relative Autonomy Index score: RAI), with
237 intervention week, group, week*group interaction, and self-reported 'relative activity' level at
238 baseline included as fixed effects. Analyses were conducted using R (v4.3.1, R Core team 2020,
239 Vienna, Austria), and compositional analyses were conducted using the compositions package (van
240 den Boogaart, et al, *Compositions: Compositional data analysis*; 2021) and the nlme package
241 (Pinheiro et al., 2006).

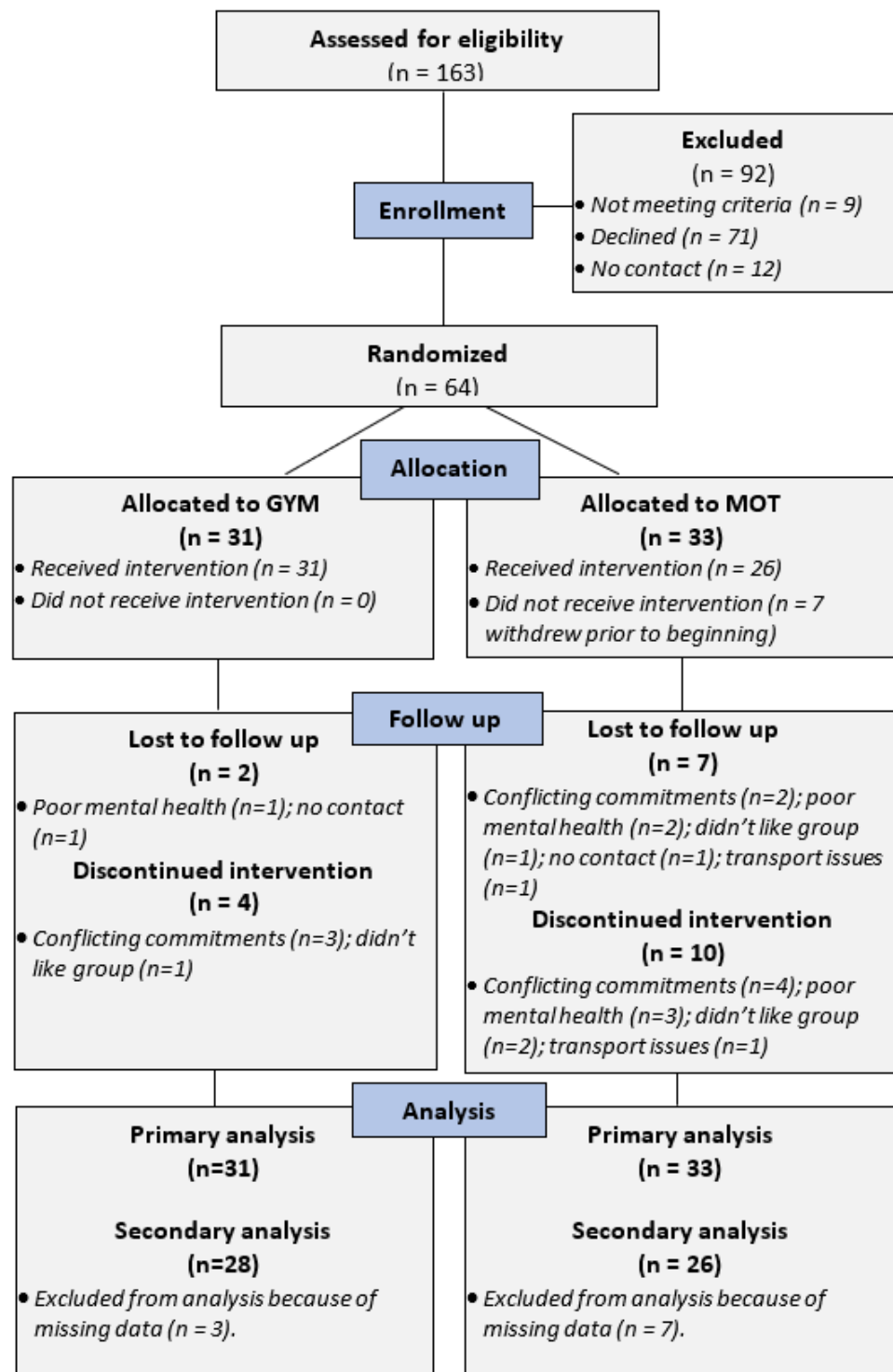
242 **RESULTS**

243 **Participant recruitment and allocation**

244 A participant flow diagram is in Fig. 2. A total of 163 people were referred to the study between July
245 2018 and January 2020. Of these, 12 were unable to be contacted, 71 declined the invitation to

246 participate, and nine were excluded for being too physically active (more than 300 min/week self-
247 reported activity). Baseline assessments were completed by 64 participants prior to randomisation: 31
248 were allocated to GYM, and 33 were allocated to MOT. A higher proportion of participants in the
249 MOT group were allocated their non-preferred condition than the GYM group (GYM=6, 19%;
250 MOT=18, 55%), and a higher proportion discontinued the MOT intervention (GYM=4, 13%;
251 MOT=10, 30%).

Under peer review



252

253 **Fig 2.** CONSORT flow diagram

254 **Participant characteristics**

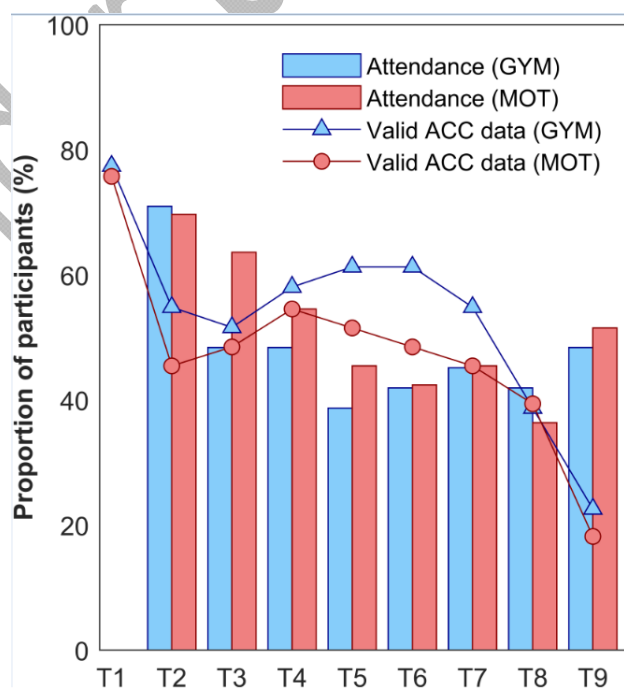
255 Participant baseline characteristics are shown in Table 1. Participants had a mean age of 36 years old

256 (range: 18 to 58 years), were predominantly male (63%), with high body mass index (BMI) (25%

257 overweight: BMI>25kg/m²; 57% obese: BMI>30kg/m²), and roughly half (45%) had high
258 psychological distress. Most participants had a primary diagnosis of a psychotic disorder (n=38;
259 59%), followed by affective disorder (n=16; 25%). Baseline characteristics were similar for GYM and
260 MOT participants.

261 Attendance and accelerometer data

262 Rates of attendance and valid accelerometer data for each week are shown in Fig. 3. Median
263 attendance to group sessions was 4/8 (IQR=2 to 7) for GYM, and 5/8 (IQR= 2 to 7) for MOT, which
264 was similar between the two groups $t(62)=0.236$, $p=0.814$. More than half of the group sessions (five
265 or more out of a possible eight sessions) was attended by 13 (42%) GYM, and 19 (58%) MOT
266 participants. The proportion of valid days of accelerometer monitoring was similar between groups
267 $t(62)=0.61$, $p=0.505$; valid accelerometer-derived statistics were available for a median of 6 weeks
268 (IQR=1 to 7) for GYM, and 5 weeks (IQR=1 to 8) for MOT participants. The mean average
269 proportion of non-wear time for these valid weeks ranged from 0.9% to 2.5%. Participants' self-
270 reported 'relative activity' level at baseline was similar between groups: *less than usual* (GYM=5,
271 16%; MOT=7, 21%), *same as usual* (GYM=21, 68%; MOT=18, 55%), *more than usual* (GYM=5,
272 16%; MOT=8, 24%), $\chi^2(1) = 0.135$, $p=0.280$.



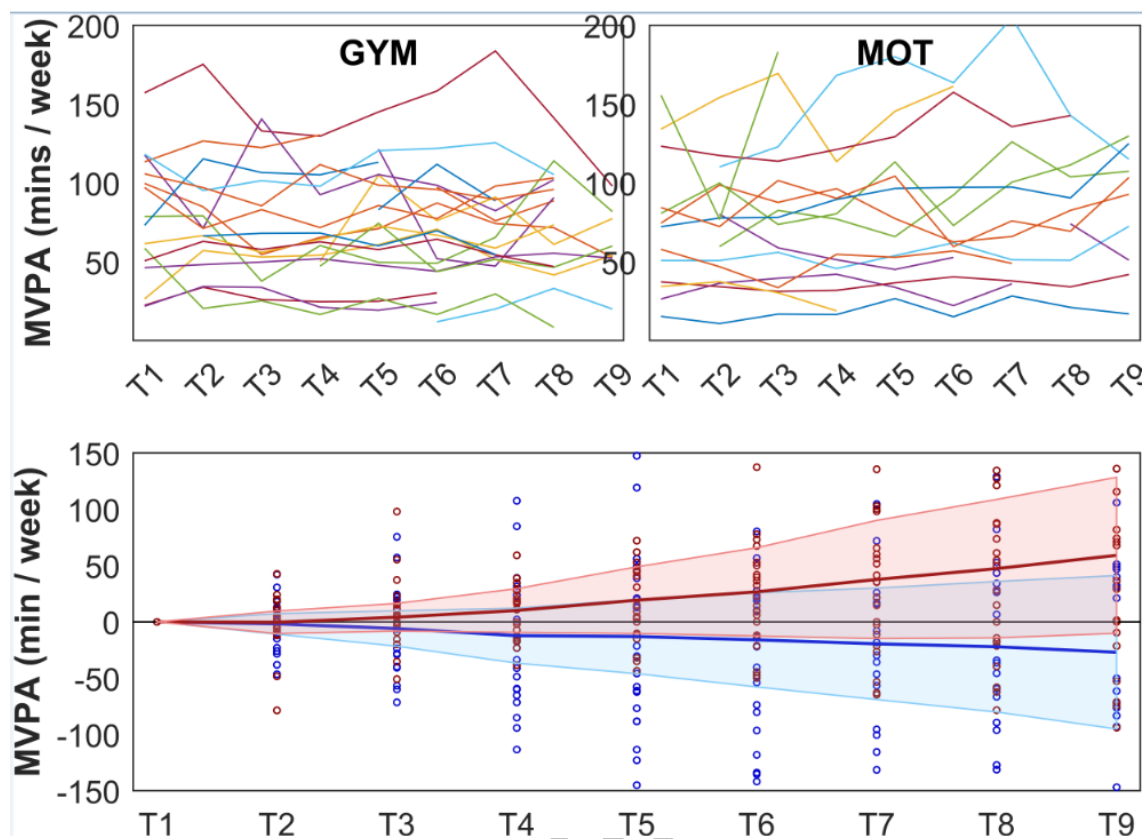
274 **Fig 3.** Attendance to group sessions shown as a proportion of participants allocated to GYM (n=31;
275 blue bars) and MOT (n=33; red bars) over the 8-week intervention period (T2 to T9). The proportion
276 of participants with valid accelerometer data (ACC) is shown for GYM (triangles) and MOT (circles)
277 over the 9-week observation period (T1=baseline).

278 **Outcomes**

279 Data for outcome measures are shown in Table 2. Considering within-group comparisons,
280 accelerometer-derived MVPA increased for the MOT ($t(32)=2.648$, $p=0.012$) but not GYM group.
281 Self-reported exercise increased for the GYM group ($t(28)=2.047$, $p=0.05$) and MOT group
282 ($t(25)=2.361$, $p=0.026$), and self-reported SB also reduced for the MOT group ($t(23)=2.135$, $p=0.044$).
283 Unadjusted mean differences (Table 2) indicated no significant difference between groups, and there
284 were no between-group differences for any other outcome measures at post-intervention. Comparing
285 self-report and accelerometer-derived estimates at baseline, accelerometer-derived MVPA was
286 moderately correlated with self-reported walking ($r=0.392$, $p=0.035$) but not incidental activity
287 ($r=0.116$, $p=0.546$) or exercise ($r=-0.188$, $p=0.328$). Accelerometer-derived SB also had moderate-to-
288 high correlation with self-reported SB ($r=0.574$, $p=0.001$).

289 **Primary analyses**

290 Plotting the raw accelerometer-derived MVPA did not reveal any discernible trends; however, plots of
291 the cumulative change illustrated a consistent increase in MVPA for the MOT group, with mean
292 cumulative changes of -19.1 (SD=126.7) minutes and 49.9 (SD=131.7) minutes for the GYM and
293 MOT groups in the ninth week, respectively (Fig. 4). The linear mixed effects model indicated a
294 significant effect of intervention week ($\beta=-10.86$; 95%CI=-18.11 to -3.62; $p=0.003$), 'relative activity'
295 at baseline ($\beta =31.10$; 95%CI=21.72 to 40.49; $p<0.001$), and week*group interaction ($\beta =8.69$;
296 95%CI=4.15 to 13.23; $p<0.001$).



297

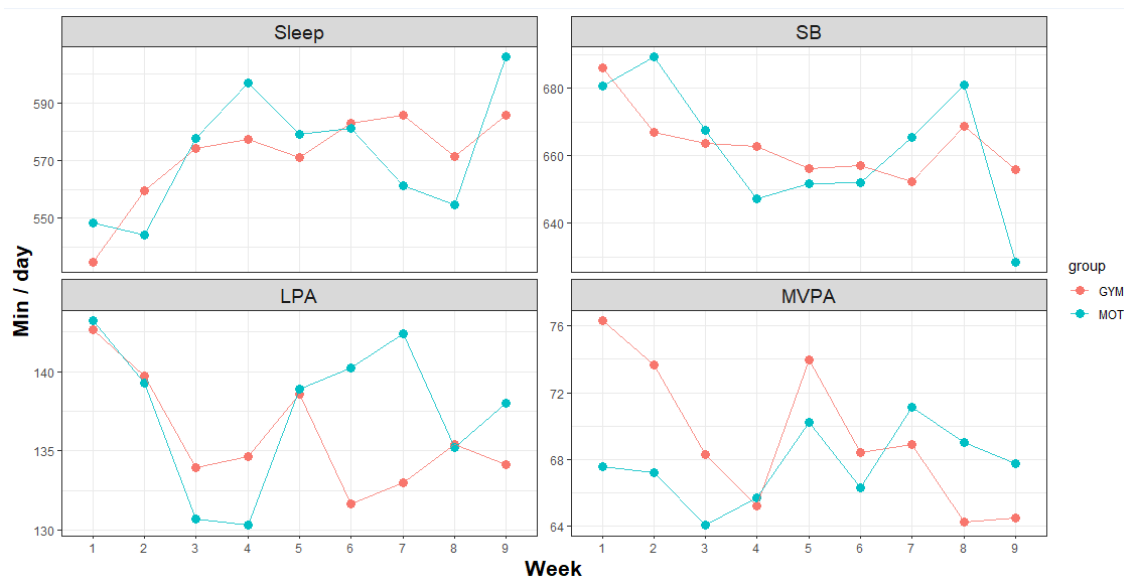
298

299 **Fig 4.** Accelerometer-derived moderate-to-vigorous physical activity (MVPA) in minutes/week
300 plotted over the 9-week observation period (T1 to T9). Raw individual trajectories for GYM (n=31)
301 and MOT (n=33) groups are shown in the top panels; the cumulative change for GYM (blue) and
302 MOT (red) groups are shown in the lower panel. Cumulative change was calculated as the weekly
303 estimates for each participant minus their baseline value (T1), hence all participants begin at zero; the
304 central line represents the group mean and the shaded region is standard deviation.

305

306 Results for the compositional linear mixed model are shown in Table S.2. Using the Satterthwaite
307 approximation of denominator degrees of freedom, there was no significant group by time interaction
308 for the first ilr coordinate over the 8-week intervention, suggesting the contribution of MVPA relative
309 to other behaviours did not differ over time by group status. Results for the MANOVA on the fixed
310 effects of the model are shown in Table S.3. The F statistic for the group by time interaction with the
311 vector of ilr coordinates ($F(24,783)=0.6, p=0.94$) suggests there was no significant difference in
312 compositions over time by group status. Model-based estimates for time use by group are shown in
313 Figure 5. There appear to be small increases in sleep and decreases in sedentary behaviour for both

314 groups across the 9-week observation period; however, given results are not significant these need to
315 be interpreted with caution.



316

317 **Fig. 5:** Model-based estimates for changes in activity across a the 9-week observation period for
318 GYM and MOT groups. SB = sedentary behaviour; LPA = light physical activity; MVPA = moderate-
319 to-vigorous physical activity.

320 Secondary analyses

321 The mean change from baseline to post-intervention in RAI was 0.6 (SD=6.5) in the MOT group
322 (n=26) and 1.9 (SD=6.2) in the GYM group (n=28). There were no significant effects for relative
323 activity at baseline ($\beta = -0.48$; 95%CI=-1.73 to 2.69; $p=0.667$), week ($\beta = -2.49$; 95%CI=-2.78 to 7.77;
324 $p=0.351$), group ($\beta = -0.07$; 95%CI=-5.66 to 5.51; $p=0.979$), or week*group interaction ($\beta = -0.76$;
325 95%CI=-4.12 to 2.60; $p=0.656$).

326 DISCUSSION

327 MVPA is a modifiable factor related to health outcomes for people with SMI. We used innovative
328 analytical approaches by investigating the cumulative sum of MVPA from baseline to evaluate
329 differences in the change in total volume of MVPA during two different interventions. The
330 cumulative change in MVPA over the intervention period was higher in the MOT group compared
331 with the GYM group. Analyses indicated that the difference between groups was about 8.7

332 minutes/week, which may suggest that the motivational intervention was more effective; however,
333 this is a marginal change overall. When inspecting within-group changes, the mean MVPA for GYM
334 participants appeared decrease from baseline, although this was non-significant. It should also be
335 noted that baseline MVPA as measured by accelerometry suggested that both groups were relatively
336 active at enrolment and exceeded the 300 min/week of self-reported activity in the study protocol.
337 Therefore, it is possible that greater improvements in MVPA would be possible with a more inactive
338 population. To isolate potential behavioural mechanisms in this study, exercise physiologists were
339 available to teach participants how to use the gym equipment and help them find suitable exercises;
340 however, structured motivational strategies such as goal setting were restricted. This suggests that
341 motivational strategies are an essential element in exercise support, and additional sources of should
342 be incorporated in the design of exercise interventions for people with SMI (Arnautovska et al.,
343 2022). It's important to note that health professionals routinely employ motivational strategies within
344 their practice; for example, a consensus statement of exercise physiology in mental health settings
345 highlights that coaching, motivational interviewing, and goal setting are core skills of exercise
346 physiologists (Lederman et al., 2016). Exercise physiologists can provide practical exercise support
347 and motivational strategies to improve MVPA of people with SMI in mental health settings.

348 The MOT sessions were informed by the Behaviour Change Wheel and COM-B framework (Michie,
349 van Stralen, et al., 2011), and behaviour change techniques included self-monitoring using activity
350 trackers and self-regulatory techniques (e.g., goal setting) which have been shown to be generally
351 effective (Brickwood et al., 2019). Goal setting was based on SMART goals in which participants
352 were asked to set 'performance goals' (e.g., walk three times/week); however, the utility of this
353 approach has been questioned for PA behaviour interventions (Swann et al., 2021). PA and exercise
354 are complex behaviours (Swann et al., 2018) and 'learning goals' have been recommended when
355 individuals are new to a complex task (Swann et al., 2021). Even though we used performance goals,
356 we used a dynamic process by allowing participants to review goals each week and amend them on
357 reflection (e.g., to do a different activity, or to increase or decrease the goal). This was to
358 accommodate participants' learning about their capabilities and preferences, and was considered

359 essential for people with SMI who experience a variety of barriers associated with psychological
360 distress (Chapman et al., 2016). It is possible that performance goals or the lack of established
361 motivational strategies (e.g., motivational interviewing) in our intervention reduced effectiveness;
362 however, there is limited evidence on motivational approaches to be used in interventions to promote
363 MVPA in people with SMI. Of the small number that have successfully demonstrated significant
364 behaviour change via accelerometry or pedometer measurement, all provided supervision (i.e.
365 walking, cycling, sports such as volleyball) and not been based on PA counselling alone (Gomes et
366 al., 2014; Ryu et al., 2020; Verhaeghe et al., 2013; Williams et al., 2019). Three of these studies
367 offered supervision alongside weekly counselling (Verhaeghe et al., 2013; Williams et al., 2019) or
368 incorporated behaviour change techniques into supervised sessions (Ryu et al., 2020). More studies
369 comparing different behaviour change approaches in people with SMI will help elucidate effective
370 intervention strategies for this group.

371 Compositional analyses were also presented, which provides a more complete understanding of the
372 relative changes of MVPA in relation to light activity, SB, and sleep (Chastin & Palarea-Albaladejo,
373 2015). When considering the complete composition of movement behaviours (sleep, SB, light activity
374 and MVPA), no significant differences were found between groups over time. Compositional analysis
375 considers data that represents portions of a finite whole, i.e., time spent in MVPA is a portion of the
376 total available time in a given measurement period, with the remaining time composed of proportions
377 of the other behaviours (sleep, light activity, sedentary behaviour) (Chastin & Palarea-Albaladejo,
378 2015). This is fundamentally different from 'conventional' analytical methods that assume time spent
379 in one behaviour is an absolute quantity and is essentially unbounded and independent of other
380 behaviours. In general, the behavioural compositions of both groups were reasonably stable over time.
381 There was no statistical evidence that any changes in behavioural compositions over the intervention
382 period were due to group allocation, so the significant cumulative change in MVPA for the MOT
383 group should be interpreted with caution. Our intervention parameters of 8-week duration and
384 once/week frequency were based on our community implementation work demonstrating
385 improvements in quality of life and self-determined motivation (Seymour et al., 2021; Whybird et al.,

386 2020); however, this ‘dose’ of support is likely insufficient to facilitate significant behavioural
387 changes. Previous interventions demonstrating MVPA increases have provided a greater number of
388 sessions/week and for longer durations (Gomes et al., 2014; Williams et al., 2019) which may indicate
389 minimally effective amounts of supervision are needed for behaviour change.

390 Contrary to our expectations, there was also no significant difference in motivation within- or
391 between-groups. Our previous research comparing PA counselling and supervised exercise
392 interventions demonstrated significant improvements in self-determined motivation, particularly for
393 the gym group (Seymour et al., 2021). These interventions were based on the interventions trialled in
394 the current study; however, the inclusion criteria and study design may explain differences in
395 observed outcomes. Seymour et al. (2021) recruited participants across primary care settings and
396 mental health services, resulting in a sample with a range of mild to severe mental health challenges.
397 Participants of the current RCT were mostly diagnosed with psychotic disorders, and motivation may
398 be particularly challenging for this group because of negative symptoms and associated cognitive
399 impairments (Arnautovska et al., 2022). Further, Seymour et al. (2021) employed a quasi-
400 experimental design in which participants were offered a choice of interventions. Self-determination
401 theory posits that motivation can become more self-determined when psychological needs of
402 autonomy, relatedness and competence are fulfilled, and contexts that undermine these needs thwart
403 the internalisation of motivation (Ryan et al., 2008). The context of a clinical trial may undermine
404 autonomy, particularly given that one-third of participants (24/64) indicated they were allocated to
405 their non-preferred condition. There is, however, limited evidence to guide interventions designed to
406 improve motivation for PA in people with SMI. A systematic review of 13 intervention studies
407 reported only two studies that demonstrated improvements in motivational outcomes for people with
408 SMI, concluding there was a lack of evidence to guide motivational interventions for people with SMI
409 (Farholm et al., 2016).

410 A major strength of our study is the use of accelerometers for continual monitoring of physical
411 movement at baseline and over the intervention period. Even though the validity of accelerometry for
412 measuring different types of PA can vary, they can be particularly useful for assessing change in the

413 volume of similar activity patterns over time. People with mental illness report that accelerometry is a
414 highly acceptable form of measurement (Chapman et al., 2015) and preferred over self-report (Suetani
415 et al., 2020). The devices were wrist-worn accelerometers which may reduce discomfort compared
416 with devices attached to other areas such as the waist, and they had a battery life that could last up to
417 60 days so did not require recharging during the intervention. About three-quarters of participants
418 provided valid data at baseline (GYM=77.4%; MOT=75.8%) which is similar to previous
419 accelerometry research with people with mental illnesses (Chapman et al., 2015); however, only about
420 one-fifth of participants provided valid data in the final week (GYM=22.6%; MOT=18.2%).
421 Accelerometer data quality was a limitation: over 70% of the MVPA estimates were missing in the
422 final week of the intervention, which reduces confidence in the findings. Accelerometers also measure
423 physical movement at one location on the body, which may reduce the validity of comparing across
424 different exercise types.

425 Compositional analysis has predominantly been used to characterise cross-sectional associations
426 between behaviours and risk factors or health outcomes (Janssen et al., 2020; Miatke et al., 2023;
427 Zahran et al., 2023). Fewer studies have used compositional data analysis to investigate movement-
428 behaviour composition as a dependent variable, particularly within a repeated measures study design.
429 Despite results of the current study suggesting no significant change in compositions over time, future
430 studies should consider analysing movement-behaviour composition as the dependent variable,
431 particularly in experimental and longitudinal study designs. Knowledge of how people empirically
432 reallocate their time under different conditions will allow for more targeted intervention and public
433 health efforts that aim to encourage favourable changes to overall composition (e.g., reallocating
434 sedentary time towards MVPA). Finally, our dropout rate of 22% (14/64) was consistent with other
435 exercise studies for people with schizophrenia (Vancampfort et al., 2016). Meta-analyses indicate that
436 exercise can improve mental and physical health in people with SMI (Firth et al., 2020), and future
437 studies should focus on the effectiveness of implementing such programs in routine care to reach a
438 broader cohort.

439 **Conclusion**

440 PA is beneficial for mental and physical health; however, it is a complex behaviour that can be
441 challenging to adopt and maintain. While statistically significant changes in the cumulative change of
442 MVPA were found for participants of the motivational PA counselling group, this was not confirmed
443 with more robust compositional analyses that considers MVPA as a composition of other daily
444 behaviours. Analysing the cumulative change of accelerometer-derived MVPA may be sensitive to
445 small changes in behaviour; however, no change in motivation was measured in this study, suggesting
446 the interventions delivered in a randomised trial context were not effective for longer-term
447 behavioural changes. Motivational strategies such as goal setting and self-monitoring using activity
448 trackers are likely more effective when combined with practical exercise support and instruction;
449 however, more research is needed to infer optimal program characteristics (e.g. duration and
450 frequency) and behaviour change strategies that may be effective for people with SMI. Future
451 research should focus on combining different motivational strategies with exercise intervention and
452 evaluating the implementation of individualised exercise programs routine mental healthcare to reach
453 a broader cohort.

454 REFERENCES

- 455 Alexandratos, K., Barnett, F., & Thomas, Y. (2012). The impact of exercise on the mental
456 health and quality of life of people with severe mental illness: a critical review.
457 *British Journal of Occupational Therapy*, 75(2), 48-60.
458 <https://doi.org/https://doi.org/10.4276/030802212X13286281650956>
- 459 Arnautovska, U., Kesby, J. P., Korman, N., Rebar, A. L., Chapman, J., Warren, N., Rossell,
460 S. L., Dark, F. L., & Siskind, D. (2022). Biopsychology of physical activity in people
461 with schizophrenia: An integrative perspective on barriers and intervention strategies.
462 *Neuropsychiatric Disease and Treatment*, 15(18), 2917-2926.
463 <https://doi.org/https://doi.org/10.2147/NDT.S393775>
- 464 Ashdown-Franks, G., Williams, J., Vancampfort, D., Firth, J., Schuch, F., Hubbard, K.,
465 Craig, T., Gaughran, F., & Stubbs, B. (2018). Is it possible for people with severe
466 mental illness to sit less and move more? A systematic review of interventions to
467 increase physical activity or reduce sedentary behaviour. *Schizophrenia Research*,
468 202(3), 3-16. <https://doi.org/https://doi.org/10.1016/j.schres.2018.06.058>

- 469 Australian Institute of Health and Welfare. (2004). *The Active Australia Survey: A guide and*
470 *manual for implementation, analysis and reporting*. Canberra, ACT: AIHW Retrieved
471 from [https://www.aihw.gov.au/reports/physical-activity/active-australia-](https://www.aihw.gov.au/reports/physical-activity/active-australia-survey/summary)
472 [survey/summary](https://www.aihw.gov.au/reports/physical-activity/active-australia-survey/summary)
- 473 Brickwood, K.-J., Watson, G., O'Brien, J., & Williams, A. D. (2019). Consumer-based
474 wearable activity trackers increase physical activity participation: systematic review
475 and meta-analysis. *JMIR mHealth and uHealth*, 7(4), e11819.
- 476 Cella, M., Roberts, S., Pillny, M., Riehle, M., O'Donoghue, B., Lyne, J., Tomlin, P.,
477 Valmaggia, L., & Preti, A. (2023). Psychosocial and behavioural interventions for the
478 negative symptoms of schizophrenia: a systematic review of efficacy meta-analyses.
479 *Br J Psychiatry*, 1.
- 480 Chapman, J. J., Fraser, S. J., Brown, W. J., & Burton, N. W. (2015). The feasibility and
481 acceptability of questionnaires and accelerometry for measuring physical activity and
482 sedentary behaviour in adults with mental illness. *Journal of Mental Health*, 24(5),
483 299-304. <https://doi.org/http://doi.org/10.3109/09638237.2015.1057321>
- 484 Chapman, J. J., Fraser, S. J., Brown, W. J., & Burton, N. W. (2016). Physical activity
485 preferences, motivators, barriers and attitudes of adults with mental illness. *Journal of*
486 *Mental Health*, 25(5), 1-7.
487 <https://doi.org/https://doi.org/10.3109/09638237.2016.1167847>
- 488 Chastin, S., & Palarea-Albaladejo, J. (2015). Supplementary material S2: Concise guide to
489 compositional data analysis for physical activity, sedentary behaviour and sleep
490 research. [https://longevity.stanford.edu/wp-content/uploads/sites/2/2016/03/Concise-](https://longevity.stanford.edu/wp-content/uploads/sites/2/2016/03/Concise-Guide-to-Compositional-Data-Analysis-for-Physical-Activity-Sedentary-Behavior-and-Sleep.pdf)
491 [Guide-to-Compositional-Data-Analysis-for-Physical-Activity-Sedentary-Behavior-](https://longevity.stanford.edu/wp-content/uploads/sites/2/2016/03/Concise-Guide-to-Compositional-Data-Analysis-for-Physical-Activity-Sedentary-Behavior-and-Sleep.pdf)
492 [and-Sleep.pdf](https://longevity.stanford.edu/wp-content/uploads/sites/2/2016/03/Concise-Guide-to-Compositional-Data-Analysis-for-Physical-Activity-Sedentary-Behavior-and-Sleep.pdf)
- 493 Clemes, S., Matchett, N., & Wane, S. (2008). Reactivity: An issue for short-term pedometer
494 studies? *Br J Sports Med*, 42(1), 68-70.
495 <https://doi.org/https://doi.org/10.1136/bjism.2007.038521>

- 496 Clemes, S., & Parker, R. (2009). Increasing our understanding of reactivity to pedometers in
497 adults. *Medicine and Science in Sports and Exercise*, 41(3), 674.
498 <https://doi.org/https://doi.org/10.1249/MSS.0b013e31818cae32>
- 499 Dumuid, D., Stanford, T. E., Martin-Fernández, J.-A., Pedišić, Ž., Maher, C. A., Lewis, L. K.,
500 Hron, K., Katzmarzyk, P. T., Chaput, J.-P., & Fogelholm, M. (2018). Compositional
501 data analysis for physical activity, sedentary time and sleep research. *Statistical*
502 *methods in medical research*, 27(12), 3726-3738.
503 <https://doi.org/10.1177/0962280217710835>
- 504 Farholm, A., & Sørensen, M. (2016). Motivation for physical activity and exercise in severe
505 mental illness: A systematic review of cross-sectional studies. *International journal*
506 *of mental health nursing*, 25(2), 116-126. <https://doi.org/10.1111/inm.12217>
- 507 Firth, J., Rosenbaum, S., Stubbs, B., Gorczynski, P., Yung, A. R., & Vancampfort, D. (2016).
508 Motivating factors and barriers towards exercise in severe mental illness: A
509 systematic review and meta-analysis. *Psychological medicine*, 46(14), 2869-2881.
510 <https://doi.org/https://doi.org/10.1017/S0033291716001732>
- 511 Firth, J., Siddiqi, N., Koyanagi, A., Siskind, D., Rosenbaum, S., Galletly, C., Allan, S.,
512 Caneo, C., Carney, R., & Carvalho, A. F. (2019). The Lancet Psychiatry Commission:
513 A blueprint for protecting physical health in people with mental illness. *The Lancet*
514 *Psychiatry*, 6(8), 675-712. [https://doi.org/https://doi.org/10.1016/S2215-](https://doi.org/https://doi.org/10.1016/S2215-0366(19)30132-4)
515 [0366\(19\)30132-4](https://doi.org/https://doi.org/10.1016/S2215-0366(19)30132-4)
- 516 Firth, J., Solmi, M., Wootton, R. E., Vancampfort, D., Schuch, F. B., Hoare, E., Gilbody, S.,
517 Torous, J., Teasdale, S. B., & Jackson, S. E. (2020). A meta-review of “lifestyle
518 psychiatry”: the role of exercise, smoking, diet and sleep in the prevention and
519 treatment of mental disorders. *World Psychiatry*, 19(3), 360-380.
520 <https://doi.org/10.1002/wps.20773>
- 521 Frates, E. P., Moore, M. A., Lopez, C. N., & McMahon, G. T. (2011). Coaching for behavior
522 change in psychiatry. *American Journal of Physical Medicine & Rehabilitation*,
523 90(12), 1074-1082. <https://doi.org/https://doi.org/10.1097/PHM.0b013e31822dea9a>

- 524 Gomes, E., Baston, T., Probst, M., Ribeiro, J. C., Silva, G., & Corredeira, R. (2014). Effects
525 of a group physical activity program on physical fitness and quality of life in
526 individuals with schizophrenia. *Mental Health and Physical Activity*, 7(3), 155-162.
527 <https://doi.org/https://doi.org/10.1016/j.mhpa.2014.07.002>
- 528 Greaves, C. J., Sheppard, K. E., Abraham, C., Hardeman, W., Roden, M., Evans, P. H., &
529 Schwarz, P. (2011). Systematic review of reviews of intervention components
530 associated with increased effectiveness in dietary and physical activity interventions.
531 *BMC public health*, 11(1), 1-12. [https://doi.org/https://doi.org/10.1186/1471-2458-11-](https://doi.org/https://doi.org/10.1186/1471-2458-11-119)
532 [119](https://doi.org/https://doi.org/10.1186/1471-2458-11-119)
- 533 Hildebrand, M., Hansen, B. H., van Hees, V. T., & Ekelund, U. (2017). Evaluation of raw
534 acceleration sedentary thresholds in children and adults. *Scandinavian journal of*
535 *medicine & science in sports*, 27(12), 1814-1823.
- 536 Hildebrand, M., VT, V. H., Hansen, B. H., & Ekelund, U. (2014). Age group comparability
537 of raw accelerometer output from wrist-and hip-worn monitors. *Medicine and Science*
538 *in Sports and Exercise*, 46(9), 1816-1824.
- 539 Janssen, I., Clarke, A. E., Carson, V., Chaput, J.-P., Giangregorio, L. M., Kho, M. E., Poitras,
540 V. J., Ross, R., Saunders, T. J., Ross-White, A., & Chastin, S. F. M. (2020). A
541 systematic review of compositional data analysis studies examining associations
542 between sleep, sedentary behaviour, and physical activity with health outcomes in
543 adults. *Applied Physiology, Nutrition, and Metabolism*, 45(10).
544 <https://doi.org/https://doi.org/10.1139/apnm-2020-0160>
- 545 Kessler, R. C., Andrews, G., Colpe, L. J., Hiripi, E., Mroczek, D. K., Normand, S. L. T.,
546 Walters, E. E., & Zaslavsky, A. M. (2002). Short screening scales to monitor
547 population prevalences and trends in non-specific psychological distress.
548 *Psychological medicine*, 32(6), 959-976.
549 <https://doi.org/https://doi.org/10.1017/S0033291702006074>
- 550 Koestner, R., Otis, N., Powers, T. A., Pelletier, L., & Gagnon, H. (2008). Autonomous
551 motivation, controlled motivation, and goal progress. *Journal of Personality*, 76(5),
552 1201-1230. <https://doi.org/https://doi.org/10.1111/j.1467-6494.2008.00519.x>

- 553 Lavie, C. J., Ozemek, C., Carbone, S., Katzmarzyk, P. T., & Blair, S. N. (2019). Sedentary
554 behavior, exercise, and cardiovascular health. *Circulation research*, *124*(5), 799-815.
555 <https://doi.org/https://doi.org/10.1161/CIRCRESAHA.118.312669>
- 556 Lederman, O., Grainger, K., Stanton, R., Douglas, A., Gould, K., Perram, A., Baldeo, R.,
557 Fokas, T., Nauman, F., & Semaan, A. (2016). Consensus statement on the role of
558 Accredited Exercise Physiologists within the treatment of mental disorders: a guide
559 for mental health professionals. *Australasian Psychiatry*, *24*(4), 347-351.
560 <https://doi.org/10.1177/1039856216632400>
- 561 Lee, H., Kane, I., Brar, J., & Sereika, S. (2014). Telephone-delivered physical activity
562 intervention for individuals with serious mental illness: A feasibility study. *Journal of*
563 *the American Psychiatric Nurses Association*, *20*(6), 389-397.
564 <https://doi.org/https://doi.org/10.1177/1078390314561497>
- 565 Leucht, S. P., Tardy, M. M. S. C., Komossa, K. M. D., Heres, S. M. D., Kissling, W. M. D.,
566 Salanti, G. P., & Davis, J. M. P. (2012). Antipsychotic drugs versus placebo for
567 relapse prevention in schizophrenia: a systematic review and meta-analysis. *Lancet*,
568 *379*(9831), 2063-2071. [https://doi.org/10.1016/S0140-6736\(12\)60239-6](https://doi.org/10.1016/S0140-6736(12)60239-6)
- 569 Miatke, A., Olds, T., Maher, C., Fraysse, F., Mellow, M. L., Smith, A. E., Pedisic, Z., Grgic,
570 J., & Dumuid, D. (2023). The association between reallocations of time and health
571 using compositional data analysis: a systematic scoping review with an interactive
572 data exploration interface. *International Journal of Behavioral Nutrition and Physical*
573 *Activity*, *20*(1), 127. <https://doi.org/10.1186/s12966-023-01526-x>
- 574 Michie, S., Abraham, C., Whittington, C., McAteer, J., & Gupta, S. (2009). Effective
575 techniques in healthy eating and physical activity interventions: A meta-regression.
576 *Health Psychology*, *28*(6), 690. <https://doi.org/https://doi.org/10.1037/a0016136>
- 577 Michie, S., Ashford, S., Sniehotta, F. F., Dombrowski, S. U., Bishop, A., & French, D. P.
578 (2011). A refined taxonomy of behaviour change techniques to help people change
579 their physical activity and healthy eating behaviours: The CALO-RE taxonomy.
580 *Psychology & health*, *26*(11), 1479-1498.
581 <https://doi.org/https://doi.org/10.1080/08870446.2010.540664>

- 582 Michie, S., van Stralen, M. M., & West, R. (2011). The behaviour change wheel: A new
583 method for characterising and designing behaviour change interventions.
584 *Implementation science*, 6(1), 42. [https://doi.org/https://doi.org/10.1186/1748-5908-6-](https://doi.org/https://doi.org/10.1186/1748-5908-6-42)
585 [42](https://doi.org/https://doi.org/10.1186/1748-5908-6-42)
- 586 Migueles, J. H., Rowlands, A. V., Huber, F., Sabia, S., & van Hees, V. T. (2019). GGIR: a
587 research community-driven open source R package for generating physical activity
588 and sleep outcomes from multi-day raw accelerometer data. *Journal for the*
589 *Measurement of Physical Behaviour*, 2(3), 188-196.
- 590 Moher, D., Hopewell, S., Schulz, K. F., Montori, V., Gøtzsche, P. C., Devereaux, P. J.,
591 Elbourne, D., Egger, M., & Altman, D. G. (2012). CONSORT 2010 explanation and
592 elaboration: updated guidelines for reporting parallel group randomised trials.
593 *International journal of surgery*, 10(1), 28-55.
- 594 O'Halloran, P. D., Blackstock, F., Shields, N., Holland, A., Iles, R., Kingsley, M., Bernhardt,
595 J., Lannin, N., Morris, M. E., & Taylor, N. F. (2014). Motivational interviewing to
596 increase physical activity in people with chronic health conditions: A systematic
597 review and meta-analysis. *Clinical rehabilitation*, 28(12), 1159-1171.
598 <https://doi.org/https://doi.org/10.1177/0269215514536210>
- 599 Pinheiro, J., & Bates, D. (2006). *Mixed-effects models in S and S-PLUS*. Springer science &
600 business media.
- 601 Rosenbaum, S., Morell, R., Abdel-Baki, A., Ahmadpanah, M., Anilkumar, T. V., Baie, L.,
602 Bauman, A., Bender, S., Boyan Han, J., & Brand, S. (2020). Assessing physical
603 activity in people with mental illness: 23-country reliability and validity of the simple
604 physical activity questionnaire (SIMPAQ). *BMC psychiatry*, 20(1), 1-12.
- 605 Ruggeri, M., Leese, M., Thornicroft, G., Bisoffi, G., & Tansella, M. (2000). Definition and
606 prevalence of severe and persistent mental illness. *The British Journal of Psychiatry*,
607 177(2), 149-155.
- 608 Ryan, R. M., Patrick, H., Deci, E. L., & Williams, G. C. (2008). Facilitating health behaviour
609 change and its maintenance: Interventions based on self-determination theory. *The*
610 *European health psychologist*, 10(1), 2-5.

- 611 Ryu, J., Jung, J. H., Kim, J., Kim, C.-H., Lee, H.-B., Kim, D.-H., Lee, S.-K., Shin, J.-H., &
612 Roh, D. (2020). Outdoor cycling improves clinical symptoms, cognition and
613 objectively measured physical activity in patients with schizophrenia: A randomized
614 controlled trial. *Journal of Psychiatric Research*, *120*, 144-153.
615 <https://doi.org/https://doi.org/10.1016/j.jpsychires.2019.10.015>
- 616 Seymour, J., Pratt, G., Patterson, S., Korman, N., Rebar, A., Tillston, S., & Chapman, J.
617 (2021). Changes in self-determined motivation for exercise in people with mental
618 illness participating in a community-based exercise service in Australia. *Health and*
619 *Social Care in the Community*. <https://doi.org/10.1101/2019.12.11.12345678>
- 620 Snijders, T. A., & Bosker, R. (2011). *Multilevel analysis: An introduction to basic and*
621 *advanced multilevel modeling, 2nd edition*. Sage Publishers.
- 622 Suetani, S., Chapman, J., Korman, N., Chapman, C., Dodd, C., Dark, F., Parker, S., &
623 Siskind, D. (2020). A comparison study of three physical activity measurement tools
624 examining acceptability in people with psychosis. *Australasian Psychiatry*, *28*(2),
625 175-179. <https://doi.org/https://doi.org/10.1177/1039856219881957>
- 626 Swann, C., & Rosenbaum, S. (2018). Do we need to reconsider best practice in goal setting
627 for physical activity promotion? *British Journal of Sports Medicine*, *52*(8), 485-486.
628 <https://doi.org/https://doi.org/10.1136/bjsports-2017-098186>
- 629 Swann, C., Rosenbaum, S., Lawrence, A., Vella, S. A., McEwan, D., & Ekkekakis, P. (2021).
630 Updating goal-setting theory in physical activity promotion: a critical conceptual
631 review. *Health Psychology Review*, *15*(1), 34-50.
632 <https://doi.org/https://doi.org/10.1080/17437199.2019.1706616>
- 633 Temmingh, H., Claassen, A., van Zyl, S., Carrara, H., Dayakalashé, N. M., Myer, L., & Stein,
634 D. J. (2013). The evaluation of a telephonic wellness coaching intervention for weight
635 reduction and wellness improvement in a community-based cohort of persons with
636 serious mental illness. *The Journal of nervous and mental disease*, *201*(11), 977-986.
637 <https://doi.org/https://doi.org/10.1097/NMD.0000000000000036>

- 638 Trost, S. G., McIver, K. L., & Pate, R. R. (2005). Conducting accelerometer-based activity
639 assessments in field-based research. *Medicine and Science in Sports and Exercise*,
640 37(11 Suppl), S531. <https://doi.org/10.1249/01.mss.0000185657.86065.98>
- 641 Van Hees, V. T., Gorzelniak, L., Dean León, E. C., Eder, M., Pias, M., Taherian, S., Ekelund,
642 U., Renström, F., Franks, P. W., & Horsch, A. (2013). Separating movement and
643 gravity components in an acceleration signal and implications for the assessment of
644 human daily physical activity. *PloS one*, 8(4), e61691.
- 645 Vancampfort, D., Rosenbaum, S., Schuch, F. B., Ward, P. B., Probst, M., & Stubbs, B.
646 (2016). Prevalence and predictors of treatment dropout from physical activity
647 interventions in schizophrenia: A meta-analysis. *General Hospital Psychiatry*, 39, 15-
648 23. <https://doi.org/https://doi.org/10.1016/j.genhosppsych.2015.11.008>
- 649 Vancampfort, D., Stubbs, B., Venigalla, S. K., & Probst, M. (2015). Adopting and
650 maintaining physical activity behaviours in people with severe mental illness: The
651 importance of autonomous motivation. *Preventive medicine*, 81, 216-220.
652 <https://doi.org/https://doi.org/10.1016/j.ypmed.2015.09.006>
- 653 Verhaeghe, N., Clays, E., Vereecken, C., De Maeseneer, J., Maes, L., Van Heeringen, C., De
654 Bacquer, D., & Annemans, L. (2013). Health promotion in individuals with mental
655 disorders: a cluster preference randomized controlled trial. *BMC public health*, 13, 1-
656 14. <https://doi.org/https://doi.org/10.1186/1471-2458-13-657>
- 657 Walker, E. R., McGee, R. E., & Druss, B. G. (2015). Mortality in Mental Disorders and
658 Global Disease Burden Implications: A Systematic Review and Meta-analysis. *JAMA*
659 *Psychiatry*, 72. <https://doi.org/10.1001/jamapsychiatry.2014.2502>
- 660 Whybird, G., Z. N., Savage, E., Korman, N., Suetani, S., Hielscher, E., Vilic, G., Tillston, S.,
661 Patterson, S., & Chapman, J. (2020). Promoting quality of life and recovery in adults
662 with mental health issues using exercise and nutrition interventions *International*
663 *Journal of Mental Health*, 51(4).
664 <https://doi.org/https://doi.org/10.1080/00207411.2020.1854023>
- 665 Williams, J., Stubbs, B., Richardson, S., Flower, C., Barr-Hamilton, L., Grey, B., Hubbard,
666 K., Spaducci, G., Gaughran, F., & Craig, T. (2019). 'Walk this way': results from a

667 pilot randomised controlled trial of a health coaching intervention to reduce sedentary
668 behaviour and increase physical activity in people with serious mental illness. *BMC*
669 *psychiatry*, 19(1), 1-10. <https://doi.org/https://doi.org/10.1186/s12888-019-2274-5>

670 Wilson, P. M., Rodgers, W. M., Loitz, C. C., & Scime, G. (2006). ‘It’s who I am...
671 really!’ The importance of integrated regulation in exercise contexts. *Journal of*
672 *Applied Biobehavioral Research*, 11(2), 79-104.
673 <https://doi.org/https://doi.org/10.1111/j.1751-9861.2006.tb00021.x>

674 Zahran, S., Visser, C., Ross-White, A., & Janssen, I. (2023). A systematic review of
675 compositional analysis studies examining the associations between sleep, sedentary
676 behaviour, and physical activity with health indicators in early childhood. *Journal of*
677 *Activity, Sedentary and Sleep Behaviors*, 2(1), 1-11.

678•
679

Under peer review

680

681

Under peer review

Table 1: Participant characteristics at baseline

	All (n=64)		GYM (n= 31)		MOT (n= 33)	
	<i>mean</i>	<i>(SD)</i>	<i>mean</i>	<i>(SD)</i>	<i>mean</i>	<i>(SD)</i>
Age (years)	35.9	(10.6)	34.4	(10.6)	37.3	(10.6)
	range=18-58		range= 18-55		range= 18-58	
	<i>n (%)</i>		<i>n (%)</i>		<i>n (%)</i>	
Female	24	(38%)	11	(35%)	13	(39%)
High psychological distress	29	(45%)	16	(52%)	13	(39%)
Number of mental health diagnoses						
1	51	(80%)	25	(81%)	26	(79%)
2	9	(14%)	4	(13%)	5	(15%)
3	4	(6%)	1	(3%)	3	(9%)
Primary mental health diagnosis						
Psychotic disorder	38	(59%)	17	(55%)	21	(64%)
<i>with psychiatric comorbidity</i>	6	(16%)	2	(12%)	4	(19%)
Bipolar disorder	11	(17%)	4	(13%)	7	(21%)
<i>with psychiatric comorbidity</i>	3	(27%)	0	(0%)	3	(43%)
Personality disorders	7	(11%)	4	(13%)	3	(9%)
<i>with psychiatric comorbidity</i>	2	(29%)	1	(25%)	1	(33%)
Depressive disorder	5	(8%)	4	(13%)	1	(3%)
<i>with psychiatric comorbidity</i>	1	(20%)	1	(25%)	0	(0%)
Other (e.g., post-traumatic stress disorder; adjustment disorder)	3	(5%)	0	(0%)	3	(9%)
Living situation						
Single person living alone	24	(38%)	13	(42%)	11	(33%)
Group home of unrelated adults	11	(17%)	5	(16%)	6	(18%)
Family household with only family members present	29	(45%)	13	(42%)	16	(48%)
Education						
Did not complete high school	18	(28%)	9	(29%)	9	(27%)
High school	19	(30%)	8	(26%)	11	(33%)
Trade certificate/apprenticeship	13	(20%)	7	(23%)	6	(18%)
Diploma	6	(9%)	3	(10%)	3	(9%)
Tertiary degree (University)	8	(13%)	4	(13%)	4	(12%)
Employment						
Unable to work	19	(30%)	7	(23%)	12	(36%)
Unemployed / looking for work	20	(31%)	10	(32%)	10	(30%)
Student	6	(9%)	2	(6%)	4	(12%)
Part-time/casual	9	(14%)	6	(19%)	3	(9%)
Volunteer	5	(8%)	3	(10%)	2	(6%)
Full-time	1	(2%)	1	(3%)	0	(0%)
Homemaker/retired	4	(6%)	2	(6%)	2	(6%)
Income management						
Very difficult / Impossible	14	(22%)	9	(29%)	5	(15%)
Sometimes difficult	20	(31%)	6	(19%)	14	(42%)
Easy / 'Not too bad'	30	(47%)	16	(52%)	14	(42%)
Smoker status						
Daily/occasionally	29	(45%)	12	(39%)	17	(52%)
Never/ex-smoker	35	(55%)	19	(61%)	16	(48%)

BMI (kg/m²)^d

<18.5	1	(2%)	1	(3%)	0	(0%)
18.5 – 24.9	10	(16%)	5	(16%)	5	(15%)
25 – 29.9	15	(23%)	4	(13%)	11	(33%)
30-34.9	17	(27%)	11	(35%)	6	(18%)
>35	18	(28%)	8	(26%)	10	(30%)
missing	3	(5%)	2	(6%)	1	(3%)

682 (Kessler et al., 2002)

683

Under peer review

Table 2: Outcome measures for GYM and MOT participants

	GYM (n=31)				MOT (n=33)				GYM - MOT		
	Baseline		Post - intervention		Baseline		Post - intervention		Post - intervention		
	Mean	SD	Mean	SD	Mean	SD	Mean	SD	Mean difference	95%CI	
Accelerometry ^a	(n=31)				(n=33)						
Sleep duration (min/day)	533.6	119.6	570.3	154.1	536.9	110.4	554.6	116.7	15.6	-113.4	206.5
Sedentary behaviour (min/day)	619.0	98.6	635.9	133.3	631.9	88.2	637.6	97.9	-1.7	-147.1	162.6
Light activity (min/day)	131.8	37.8	133.8	45.4	134.3	37.5	137.5	41.2	-3.7	-88.4	23.5
MVPA (min/day)	79.3	37.6	74.6	34.5	67.1	29.7	74.1	34.5	.5	-59.6	15.8
Self-report measures	(n=29)				(n=26)						
<i>Kessler - 6 distress</i>											
Total score	14.2	6.9	14.5	7.4	14.2	4.7	13.2	5.2	1.4	-2.3	5.0
<i>BREQ - 3</i>											
Amotivation	0.5	0.6	0.3	0.5	0.5	0.6	0.5	0.7	-.2	-0.5	0.2
Controlled motivation	1.7	0.9	1.6	0.8	1.3	0.9	1.5	1.0	.2	-0.3	0.7
Autonomous motivation	2.3	0.8	2.4	0.9	2.0	1.0	2.3	1.1	.1	-0.4	0.6
Relative Autonomy Index	7.5	6.2	9.0	5.7	7.1	6.4	7.7	6.6	1.3	-2.0	4.6
<i>SIMPAQ</i>											
Sedentary (min/day)	480.0	227.9	411.4	220.7	440.8	215.8	325.0	203.2	86.4	-32.5	205.4
Walking (minutes/day)	49.1	75.2	50.4	66.4	43.3	51.2	40.8	37.2	9.5	-20.0	39.1
Exercise (minutes/day)	5.1	10.0	8.1	11.9	2.0	5.4	8.4	15.3	-.3	-7.7	7.1
Incidental activity (min/day)	75.8	87.6	73.2	128.2	51.5	55.1	34.2	44.1	39.1	-14.0	92.2
Physical measures											
Waist (cm) [□]	108.2	20.8	108.2	21.0	107.7	17.0	107.0	15.2	-6.4	-9.6	11.9
Weight (kg)	94.8	27.0	97.2	29.0	92.1	20.1	90.5	20.0	-.5	-8.1	21.4
Body mass index (kg/m ²)	32.6	8.8	33.5	9.4	30.9	6.3	30.6	6.2	6.6	-1.8	7.7
Systolic BP (mmHg)	119.2	13.9	116.6	11.7	121.0	15.4	123.0	18.0	2.9	-15.2	2.3
Diastolic BP (mmHg)	83.7	9.5	82.8	9.2	85.2	10.4	83.3	13.2	1.2	-7.0	6.1

4 GYM=Gym intervention; MOT=Motivational intervention; BREQ3: Behavioural Regulation for Exercise Questionnaire; SIMPAQ: Simple Physical Activity Questionnaire;
5 BP: Blood pressure; SD=Standard deviation; 95%CI: 95% confidence intervals of the unadjusted mean difference in post-intervention values for MOT and GYM groups;
6 MVPA: Moderate-vigorous physical activity. ^a Accelerometer data at post-intervention were calculated with imputed values.

Under peer review

7 ^a Accelerometer-derived estimates calculated with missing data imputed with the group mean (if missing from baseline) or last observation carried forward (for intervention
8 weeks).