

Autistic voice: Sharing autistic children's experiences and insights.

Sinéad L. Mullally^{1*}, Alice E. Wood¹, Cherice C. Edwards¹, Sophie E. Connolly¹, Hannah Constable¹, Stuart Watson², Jacqui Rodgers³, Kieran Rose⁴, Nic King⁵

¹ Translational and Clinical Research Institute, Henry Wellcome Building, Faculty of Medical Sciences, Framlington Place, Newcastle University, UK; ² Academic Psychiatry and Regional Affective Disorders Service, Wolfson Research Centre, Campus for Ageing and Vitality, Newcastle University, UK; ³ Population Health Sciences Institute, Faculty of Medical Sciences, Newcastle University, UK; ⁴ The Autistic Advocate, <https://theautisticadvocate.com/>; ⁵ PANDAS Online, <https://pandasonline.org/>

Abstract: Autism research rarely amplifies the voices of autistic children. Here, we aim to counter this by collating and sharing the first-hand experiences and insights of autistic children. A total of 136 children (8-14 years of age) self-reported their experiences of being autistic via a semi-structured online questionnaire/video call. Both qualitative and quantitative data was gathered, and inductive thematic analysis used to analyse qualitative responses. Four core themes were identified: 'Safety and Security', 'Conformity, Fitting in and Masking', 'Identity', and 'Sensory Sensitivity'. The initial theme of safety and security permeated the children's narratives and overwhelmingly, the children spoke of the need for them to be alert to who in their lives is a safe person and who is not. They were also highly attuned to whether specific places are safe for them, as past experiences appear to have taught them that their safety in everyday places cannot be assumed. Teachers, health and social care professionals, and neurotypical peers were frequently singled out as unsafe people and school as an unsafe place, whilst parents, home, and autistic peers were often referred to as safe. This distinction was also evident in the statistical analysis of the quantitative data, whereby autistic children were significantly more likely to report that it is okay for them to be autistic at home, relative to when they are at school or with their friends/peers. Judging a person as safe was closely linked to that persons' understanding of the child and of their autistic experiences, and understanding was important in establishing trust. When trust was established, it appeared possible for trusted people to facilitate a sense of safety for the children even within otherwise unsafe places. A sense of belonging within autistic/neurodivergent communities was positively linked to the core theme of safety and security and to having a positive autistic identity, whilst masking and sensory distress were linked to feeling unsafe and insecure. These first-hand accounts provide valuable insights into autistic children's lives and demand that we urgently explore how places outside of the family home (including places of

NOTE: This preprint reports new research that has not been certified by peer review and should not be used to guide clinical practice.

Introduction

Historically, autistic people have been viewed through various medicalised models, such as the view depicted below:

“You see, you start pretty much from scratch when you work with an autistic child. You have a person in the physical sense – they have hair, a nose and a mouth – but they are not people in the psychological sense. One way to look at the job of helping autistic kids is to see it as a matter of constructing a person. You have the raw materials, but you have to build the person.” (Ivar Lovass, in conversations with Chance, 1974).

This quote effectively illustrates how autistic individuals have been dehumanised and misunderstood by the medical and research communities. Such misunderstandings likely arise because of limited interactional expertise from non-autistic researchers, an exclusion of autistic researchers from medicine and science, and the exclusion of the autistic voice in the literature. More specifically, rather than engage with, and gain insight from, first-person experiences within knowledge production, researchers have silenced and “quarantined” autistic voices (Milton & Bracher, 2013), leading to research dominated by the voices of researchers who have alliances to medicalised and clinical practice. In addition, when autistic scholars attempt to enter the field of medicine or science, they are often actively discouraged (Shaw et al., 2023).

When analysing a series of blogs written by autistic people, Holt et al., (2022), identified a subtheme of ‘You Exclude Me from the Research’, with the underpinnings of this subtheme rooted in the harmful and stigmatising perceptions of autism held by the research community e.g., that autistic people lack theory of mind and the capacity for empathy (see also Gough, 2024). Some deficit models go further by claiming that autistic people lack epistemic authority (Frith & Happé, 1999; Hens et al., 2019; Holt et al., 2022) and that the

opinions and insights offered by autistic individuals will contain bias or inaccuracies simply because they have been produced by autistic individuals (Botha, 2021). Hence, ‘expert’ opinions are typically favoured over insider, first-hand accounts (Saunders, 2018). Indeed, autistic people are so commonly excluded from discourses on autism that even within research focused on understanding what the priority areas for autism research should be, only 9% of the voices included belonged to autistic individuals, with 61% and 24% of the other voices belonging to those of family members and professionals respectively (Roche et al., 2021).

This absence of insider perspectives has enabled the academic literature to be filtered through a medical model perspective (Milton, 2014) in which autism is frequently conceptualised as an intrinsic barrier to a good life (Botha et al., 2022a). This silencing of autistic voices within the field has raised ethical and epistemological concerns (Milton, 2012) and has resulted in a lack of connection and trust between autism researchers and the autism community (Chown et al., 2017; Milton & Bracher, 2013; Milton, 2014; Pellicano et al., 2014). Moreover, the legacy of non-autistic people dehumanising autistic people (Botha & Cage, 2022; Jiang et al., 2023; Rose, 2020) within psychological research and practice has compounded this loss of trust (Cage et al., 2019). This fractured connection is further evident when autistic voices have been used and misunderstood by non-autistic scholars (Milton & Bracher, 2013). Hence, we have an autism literature that lacks the depth of understanding and comprehensiveness that it could have should the voices of autistic people, who are the experts when it comes to understanding their own experiences (Gillespie-Lynch et al., 2017), have been placed front and centre stage.

While the voices of autistic adults are rare in research, the voices of autistic children are scarcely heard. In a meta-synthesis (DePape & Lindsay, 2016), only 4 studies met the inclusion criteria of a peer-reviewed publication using qualitative methods that focused on the

first-hand experiences of autistic children across multiple areas of life, whilst 10 papers met this criterion for autistic adolescents, and 15 for autistic adults. Whilst the tide is starting to turn, and autism researchers are increasingly working with autistic children to understand their experiences (e.g., Fielding et al., 2024; Goodall, 2018; Kirby et al., 2015; Phung et al., 2021), these studies tend to have small sample sizes, focus on older children, and/or focus on a very specific topic (e.g. experiences in mainstream school). Most developmental autism research still omits the child's voice, relying instead upon the perspective of parents, teachers, healthcare professionals, or academics to describe and conceptualise autistic children's experiences.

Through this research we aimed to address this significant and harmful oversight by collating the autobiographical narratives of 136 autistic children. Here, we share what these children told us about being an autistic child in the UK today.

Methods

Participants

Participants were recruited as part of a wider study evaluating the usefulness of an autistic-led autism psychoeducation course (NeuroBears) that aims to provide post-diagnostic support for autistic children and their families. This study had three phases: a baseline phase (where knowledge of autism and feelings about being autistic were assessed prior to engaging with NeuroBears), the course phase (where participants had 6-weeks access to the NeuroBears course), and a post-NeuroBears phase (where baseline questions were repeated, in addition to questions pertaining specifically to NeuroBears). This paper presents data from the children's responses to the baseline questions only (for further details, see Figure 1).

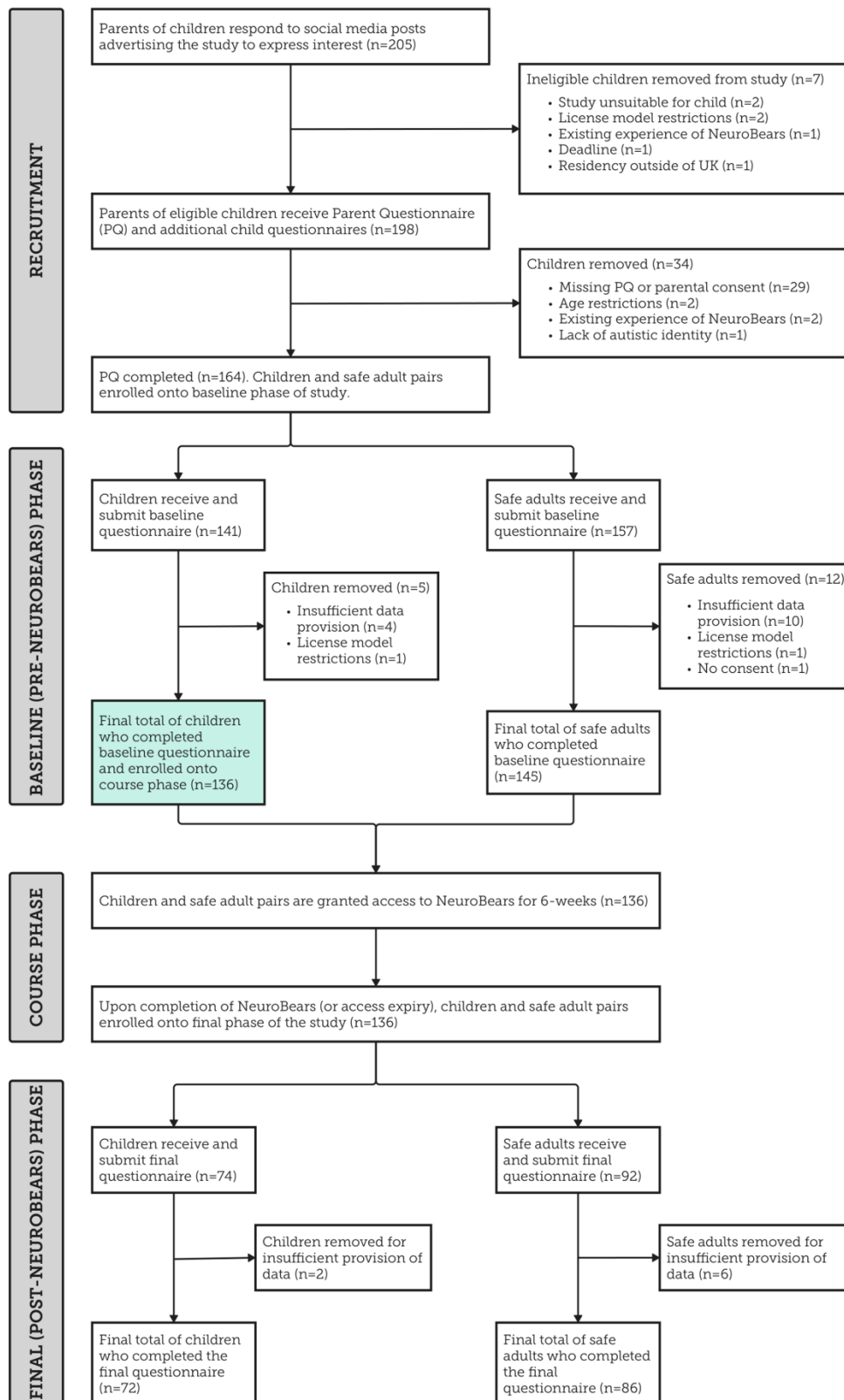


Figure 1: Flow-chart detailing the phases of the wider study. The blue box highlights where the data analysed in this paper was acquired.

In total, 141 autistic children and their safe adults volunteered to participate in the study. Five were removed due to insufficient provision of data ($n=4$) or falling outside of the remit of the study ($n=1$), leaving a final total of 136 participants (see Figure 1). Children were aged between 8-14 years (Mean=10.35, StDev=1.727) (Figure 2A). For 71 (52.2%) of the children, their sex assigned at birth was female, and for 65 (47.8%) of the children, their sex assigned at birth was male. With respect to gender, 69 (50.7%) children identified as female, 63 (46.3%) identified as male, 2 (1.5%) identified as non-binary, 1 (0.7%) self-described, and 1 (0.7%) opted not to respond. 128 (94.1%) parents identified their child's ethnicity as White, whilst 8 (5.9%) identified their child's ethnicity as belonging to a mixed or multi-ethnic group. All participants were current residents of the United Kingdom (Figure 2B). The socioeconomic status (SES) of the children was interpreted using the Index of Multiple Deprivation (IMD) (Noble et al., 2019) i.e., area-based deprivation indices that are based on a combination of seven different types of deprivation, which ranks the population from most deprived to least deprived. The mean IMD decile was 6.69 (SD = 2.69) (i.e., less deprived than the UK average). An overview of the IMD distribution is shown in Figure 2C.

As per inclusion criteria, all children were autistic, established via formal diagnosis (86%) or self-identification. Diagnoses were received between 2014 and 2023 (i.e., between 0 and 9 years ago), with the mean time elapsed since diagnosis being 2.06 years (StDev=2.29). Parents also reported co-occurring conditions using a list of 22 other neurodivergences and mental or physical health conditions (see Table 1).

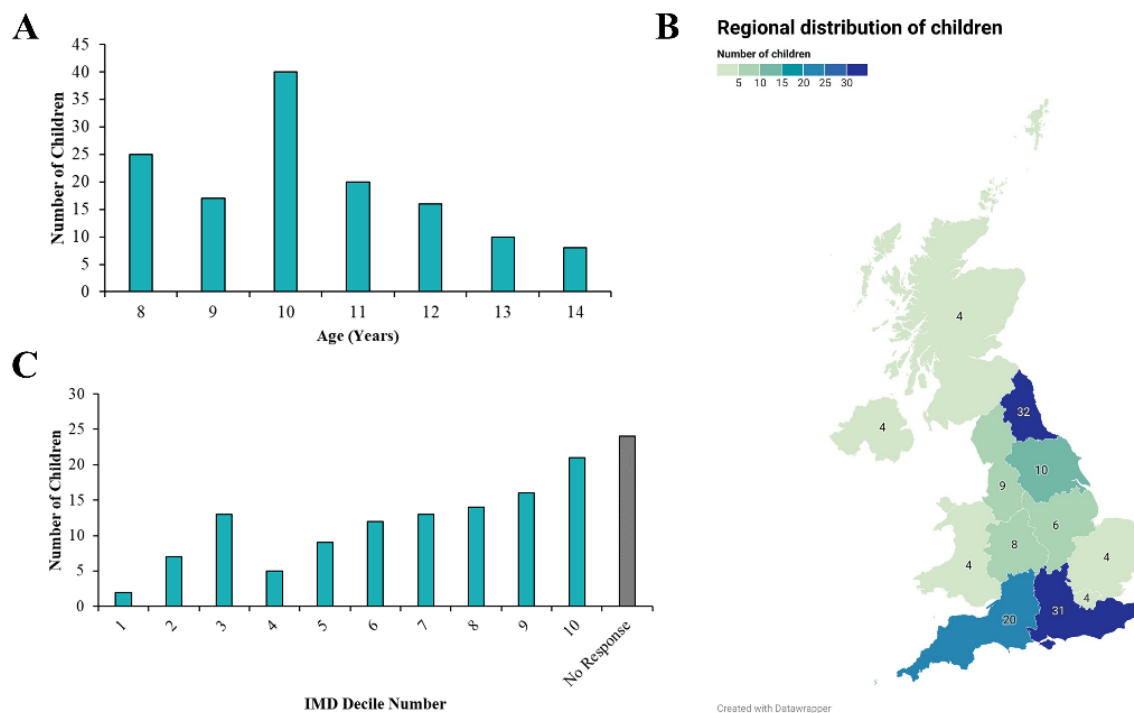


Figure 2. (A) Age Distribution of Children (n = 136). (B) Regional Distribution of Children (n = 136). (C) Index of Multiple Deprivation (IMD) Deciles and Socioeconomic Status (SES) Overview for participants residing in England. Deciles reflect the most deprived neighbourhoods (1) and the least deprived neighbourhoods (10) in England.

Research Ethics and Language

This study was approved by the Faculty of Medical Sciences Research Ethics Committee, part of Newcastle University's Research Ethics Committee. Written informed consent was obtained from both the children and their parent/legal guardian prior to participating in the research. Consistent with endorsements from autistic adults in the United Kingdom (Kenny et al., 2016), we use identity-first language within this paper (e.g., 'autistic child' rather than 'child with autism').

Table 1. Neurodivergent, mental health and physical health conditions. ADHD = attention deficit hyperactivity disorder. For full list of other conditions noted by parents, see Table S1.

N=136	Diagnosed	Pathway	Referral Refused	Other/Self-Identified	Total
Autism	86.00%	6.60%	-	7.40%	100%
ADHD	28.70%	14.00%	1.50%	16.90%	61.10%
Sensory Processing Difficulties	22.80%	4.40%	1.50%	28.70%	57.40%
Anxiety	19.90%	4.40%	2.20%	25.70%	52.20%
Emotion Regulation Difficulties	8.10%	0.70%	1.50%	33.80%	44.10%
Pathological Demand Avoidance (PDA)	12.50%	5.10%	-	19.90%	37.50%
Hypermobility	14.00%	2.20%	0.70%	14.00%	30.90%
Dyspraxia/Motor Skills Disorder	8.80%	1.50%	-	11.00%	21.30%
Dyslexia	6.60%	2.90%	1.50%	9.60%	20.60%
Selective Mutism	6.60%	1.50%	0.70%	10.30%	19.10%
Auditory Processing Disorder (APD)	2.20%	0.70%	1.50%	11.00%	15.40%
Gifted	0.70%	-	-	13.20%	13.90%
Depression	1.50%	2.20%	0.70%	3.70%	8.10%
Dyscalculia	2.20%	-	-	5.90%	8.10%
Speech Difficulties	4.40%	0.70%	-	2.90%	8.00%
Visual Processing Difficulties	2.90%	-	0.70%	4.40%	8.00%
Dysgraphia	2.20%	-	0.70%	4.40%	7.30%
Obsessive Compulsive Disorder (OCD)	3.70%	-	0.70%	2.90%	7.30%
Tic Disorder	0.70%	1.50%	0.70%	2.20%	5.10%
Other Physical Health Condition(s)	2.90%	-	-	1.50%	4.40%
Language Disorder	2.90%	0.70%	-	0.70%	4.30%
Other Mental Health Condition(s)	2.90%	0.70%	-	0.70%	4.30%
Other Neurodivergence(s) or Health Condition(s)	1.50%	-	-	0.70%	2.20%
Colour Vision Deficiency	0.70%	-	-	0.70%	1.40%
Intellectual Disability	-	-	0.70%	0.70%	1.40%
Unspecified Learning Disorder	-	-	0.70%	0.70%	1.40%
Other(s)	-	-	-	0.70%	0.70%

Design

The study used a concurrent embedded mixed-methods, within-participants design, in which both qualitative and quantitative data were collected pre- and post-NeuroBears. Only the child data collected pre-NeuroBears will be reported in this paper, with a particular focus on the qualitative data. However, some quantitative data is included where it was felt that this provided an additional level of insight into the children's experiences. Parent/guardians completed a baseline questionnaire to gather demographic and health information.

A participatory approach was taken throughout this research. This involved frequent meetings with NK (creator and co-author of NeuroBears) throughout the design and write-up phases for advice with respect to wording of questions (e.g., with respect to their accessibility for the target age group and whether the questions developed fully aligned with, and encompassed, the learning objectives of NeuroBears), language use, accessibility, etc. NK and KR (co-author of NeuroBears) also contributed to writing this manuscript.

Materials

Questions and response options were developed by the researchers at Newcastle University (SM, SC, and HC, with advice from JR). Questionnaires were distributed via Qualtrics. The child baseline (i.e., pre-NeuroBears) questionnaire focused on the children's understanding and feelings about being autistic, how they communicate with others with respect to their autistic experiences, how they feel when doing so, and how brave they feel to self-advocate (Supplemental Materials pages 2-4). Free text comments informed the qualitative analysis. Two quantitative questions are also reported here. Both questions were repeated across three contexts i.e., 'Do you feel it is okay to be autistic around...' - (context 1) 'people at home', (context 2) 'your friends/peers', (context 3) 'your teachers', and 'Do you feel you can act in a way that feels comfortable and happy for you when you're...' - (context 1) 'at home',

(context 2) ‘out and about’, and (context 3) ‘at school’. For details on NeuroBears (www.pandasonline.org) see Figure S1.

Procedure

Participants volunteered by responding to recruitment posts on the PANDAS online social media pages and the Newcastle University Cognitive Development Lab’s Facebook page. Parents were then emailed the initial questionnaires (parent, child, safe adult). Participating children were encouraged to attend a scheduled Microsoft Teams meeting to complete their child pre-NeuroBears questionnaire alongside a researcher, who inputted the children’s responses on their behalf. Alternatively, the children were free to complete their questionnaire alone in their own time. In total, 13 children completed the baseline questionnaire alongside a researcher and 123 completed it in their own time. Additional phases are described in Figure 1 and data from the post-NeuroBears phase will be described elsewhere.

Data analysis

Following Braun and Clarke's recommendations (2006), a reflexive thematic analysis was used to analyse free-text responses in the questionnaire alongside anything the children said during their scheduled appointments. During analysis, an inductive approach was taken, and a critical realist perspective allowed the researchers to truly understand the authentic experiences of the autistic children. The researchers (X and X) first familiarised themselves with the data by repeatedly reading the children’s pre-NeuroBears responses, and they then coded the data based on the semantic content of these responses to ensure that the analysis accurately reflected the information shared. Similar codes were then grouped to form themes.

Which were finally reviewed and defined by researchers (X, X, and X), and a thematic map was finalised. The quantitative was analysed using related-samples Friedman’s analysis of variance by ranks with Dunn-Bonferroni post hoc tests.

Results

Thematic analysis found four dominant themes, namely: Safety and Security; Conformity, Fitting in and Masking; Identity; and Sensory Sensitivity. An overview is presented in Figure 3.

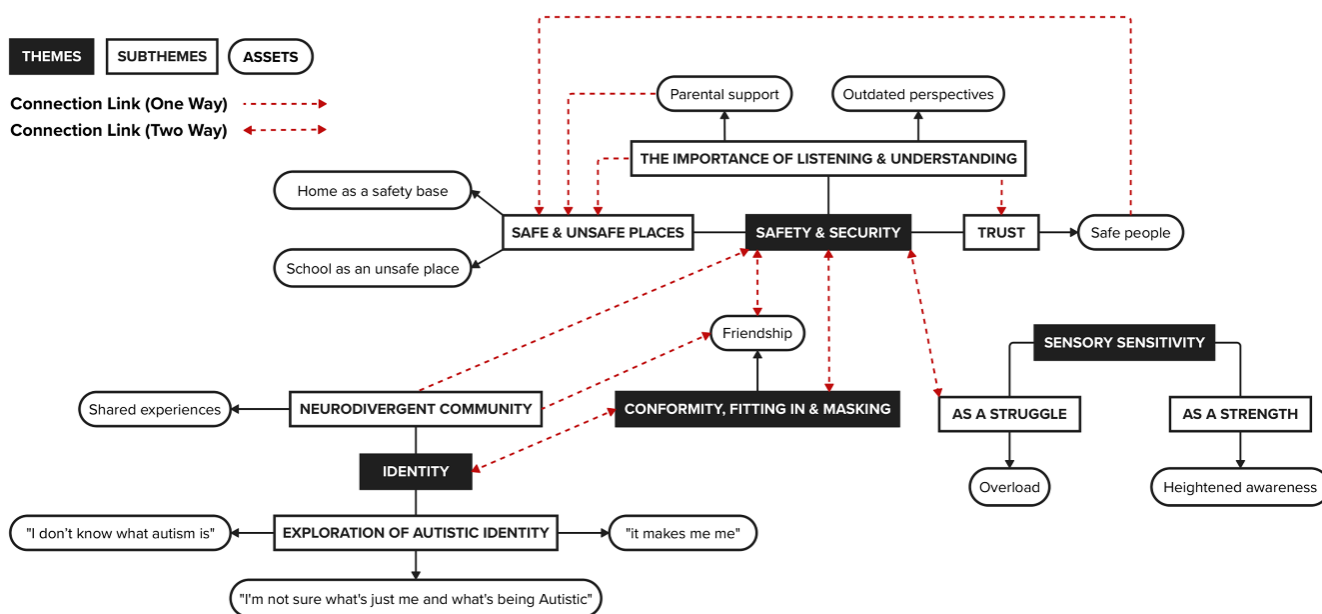


Figure 3. Thematic map: themes (black rectangles with white font), subthemes (white rectangles with black outline and black font) and assets (white ovals with black outline and black font). The flow within themes [i.e., theme > subtheme(s) > asset(s)] is represented by black arrows, whilst wider connections between theme(s), subtheme(s), asset (s) are represented using red dotted arrows. A simplified version of this thematic map is included in Supplementary Materials (Figure S2).

Theme 1: Safety and Security

The theme of safety and security refers to the child's perception of feeling safe and secure. The children recognised that feeling safe and secure was imperative to their lived experience of autism. The theme encompasses the subthemes 'safe and unsafe places', 'the importance of listening and understanding', and 'trust'. Throughout all subthemes, participants showed a requirement for a safe space to navigate their struggles, access support and be their authentic self. For some, this was a specific individual or group that they could confidently discuss their experiences with. For others, the manifestation of security was a physical area of sanctuary.

The Importance of Listening and Understanding. Autistic children highlighted the importance of being heard and understood by others and/or the harm caused to them from feeling unheard and misunderstood. Importantly, children often appeared to judge an individual as safe if they felt understood and listened to by them. Relatedly, children reported a preference for people who took time to understand them and their autism, and this understanding supported open, safe communication “[I would] *rather talk to someone about it who understands it quite well. Or who knows and understands me.*”

Furthermore, an unwillingness from others to understand was found to contribute to experiences of isolation. A child reflected that if someone chooses not to understand their autism, “*it makes me feel alone and sad and isolated*”. When feeling unheard and misunderstood, a sense of insecurity and loss of safety can be seen:

“I feel brave when it is the right people but not the wrong people. Talking to the right person feels like talking to a fluffy cat or is nice/friendly, make an effort to what I am saying, then I feel that they are the right person. The wrong person feels like a cat that tries to bite you.”

Concerns that wider society holds outdated perspectives of autism, especially amongst professionals, were expressed. It was emphasised that professionals have outdated views about autism that can be problematic in relation to a child feeling heard and understood. One child stated that “*other people like professionals*” do not listen to them. Professionals reported to hold outdated views included social workers, childcare providers (nanny’s or babysitters), and Children and Young People’s Services (CYPS) or Children and Adolescence Mental Health Services (CAMHS). One child stated that their “*sOcial worker doesnt listen even when i was brave enough*”. Others suggested that they felt unheard because their nanny “*didn't understand as much*” or their babysitters do “*not really*” listen to them.

A generational misunderstanding of autism also added to the loss of security and safety. Experiences of ignorance were conveyed through a reporting that those with a “*a more traditional outlook (eg some of my grandparents) don't [listen] and act like they know best*”, resulting in the children not feeling safe enough to discuss autistic experiences with wider family.

Negative experiences involving teachers were linked with a lack of understanding, leading to a loss of security: “*Adults at school when I was there would not listen and I felt very unsafe all the time. This was all adults apart from one.*” The children explained that their teachers “*don't understand my need for choices*”. In extension, a child stated that “*the teachers tell me off for fiddling with stuff*”. Another shared that “*I don't feel brave to tell people at school what I need. I don't think they listen or get why I'm struggling. I only feel brave enough to tell my parents what I need.*” One participant gave a striking example of feeling misunderstood whilst at school, causing them to hide their true feelings, which can be seen in later discussions surrounding conformity, fitting in and masking, as well as feeling unsafe at school:

“Scholl!!!! School is so hard and changes and when i cant talk and nobody understands how hard it is for me as i cant explain it well enough and i just say im fine at school but im not”.

Positive experiences with teachers related to those teachers who understood autism, for example, one child said that the teacher at an *“alternative provision unit”* listens to their choices. Similarly, another said that they *“feel alright talking to [the] SENCO teacher at school, not around regular teachers”*.

Furthermore, positive experiences were reflected when participants spoke of talking to other neurodivergent people, with children reporting that they often had a deeper understanding of each other. One participant said that they *“feel more comfortable when talking to people who are neurodiverse because they understand a bit more”*, and another stated that *“with my friends who have autism or are neurodiverse, it is easier to understand them, or the way they are feeling in certain situations”*.

Trust: Participants frequently mentioned a network of people that they considered safe and therefore, felt secure enough to discuss their experiences without fear of prejudice or judgement. Some children declared that their ability to authentically communicate their autistic experiences and needs was navigated by the level of trust they had in the individual. Comments included *“i only talk about it [being autistic] with trustworthy people”* or *“I feel comfortable speaking about it if they are safe people”*. When a trusting relationship had not yet been established, a lack of confidence in *“being able to speak to people I don't know very well”* was found.

Although the children often viewed some specific environments as unsafe, this could sometimes be mitigated by the presence of a trustworthy and sincere person: *“i feel safe at home and with close trusted people in unfamiliar or challenging environments”*. However,

negative experiences could erode trust in people more generally e.g., one participant recalled a negative experience when talking about being autistic with someone they had considered a “best friend”. They articulated that it “took a long time to make friends and trust people” after the incident, whilst another child stated, “some people don’t care or think im joking”.

Feelings of trust were often linked to parental support, particularly maternal support, and this support appeared important to the children’s overall sense of safety and security e.g., “only really talk to my mum about it Cus she understands about autism”, “[the] only person I openly talk to about my autistic experiences etc is my mum and she is the only one I feel safe doing this with”, and “different with mum, been there since I was little - most likely autistic too, so understand what it's like when crowds get too busy and it's too loud”. Some children delineated the different ways in which their parents support them:

“I talk about it [being autistic] with my dad. He’s always listen to me. Sometimes he can’t help but he helps keep me calm and stay with me when im upset. My mum also helps. She might not be very good at keeping me calm but she helps speak to people when I can’t and sort out problems for me when I was bullied on the bus to school or lose things.”

Children also commonly spoke of feeling more confident around their parents. For example, a child said that they “feel not as anxious when with mam”, and another said they “feel happier when I am with Mum, Dad”. The comfort that parental support offers is closely linked to feelings of being safe at home, which is described in the subtheme of ‘Safe and Unsafe Places’.

Safe and Unsafe Places: The children typically described home as a place of safety, whilst school was typically seen as an unsafe place. A connection between using home as a safety base and trust, with a shared underlying principle of safety and security, was evident.

The physical environment of a child's home was commonly referred to as a "safe" place.

Using the home as a secure place to discuss autism was evident in responses, with statements of "*we talk about it [being autistic] at home, but I don't talk about it specifically anywhere else*" and "*I prefer talking about being autistic at home*".

Furthermore, links between using home as a safety base and the importance of being listened to and understood were identified e.g., "[I] *don't feel listened to outside of home*". Feelings of safety at home have also been linked to the parental support available to the child, e.g., when referring to emotions that had built up throughout the day, one child stated "[I] *let it out at home with mum or sometimes dad*".

Links between trust and confidence in being oneself at home were also found, solidifying links to conformity, fitting in and masking (or lack thereof). One participant stated "[I] *don't mask at home*", whilst others stated, "*I can be me at home the most*" and "*I am very free at home*".

In contrast to home, when describing the overall school environment, many responses were negative. Autistic children frequently declared that they found school difficult, and, in some cases, this intensified their struggles: "*school its a bit harder... if things get too much at school i can't go somewhere quiet like at home*" and "*if I'm having a hard time at school, other things that might not normally be hard could be.*"

Many children spoke of negative experiences with their teachers, which often linked back to the importance of being listened to and understood. One child suggested that "*teachers should be reading everything... I think people (specifically teachers) should be more approachable and not scary.*" Instances where the child had positive experiences with their teachers often involved teachers with a deeper understanding of autism, as described earlier. An already established, trustworthy relationship with a teacher can be influential on a

child's ability to feel safe and secure: *"I feel brave enough when it is my favourite teacher or the nicest ones."*

Another problematic area when considering school was the restrictions imposed on children, for example *"I need to follow lots of rules in school"*. School uniform was also mentioned as something difficult, for example some children mentioned that the lack of choice regarding school uniform was a struggle, whilst one commented on the specific sensory experience of uniforms, which links to later discussions regarding sensory sensitivity: *"school uniform (annoying/itchy/getting the right things like socks/leggings/shoes)."*

Theme 2: Conformity, Fitting in and Masking

By conforming to expectations of a society informed by the neurotypical experience, some autistic children attempted to maintain a sense of similarity to fit in with their non-autistic counterparts. Closely linked with safety and security, conformity, fitting in and masking, appear to be connected to feeling understood, and in turn, secure. The polarisation of *"being different"* was often seen in responses, reinforcing a link between identity and conformity, fitting in and masking.

Attempts at conformity and fitting in have been described through masking, with a child explaining that *"when I am alone I feel myself unmasking but feel myself masking when I am not alone"*. Another commented that they amend their behaviour to fit in and avoid judgement: *"I wanted to try and smile and be funnier because someone said I was boring."*

Closely linked to identity, some children were concerned that in identifying as neurodivergent and therefore, not conforming to the neurotypical majority, they would be treated differently e.g., *"I don't really like to talk about being autistic because it makes me*

feel uncomfortable telling others and I worry that they may treat me differently because I am autistic.”

Feelings of being unheard and misunderstood can act as a catalyst for children hiding their autism: *“when people make jokes about it, or they don't know what it's actually like, I feel like I have to hide it away, and who i actually am.”*. Examples of this were reported in a variety of scenarios, including with professionals, at school, and at home e.g., Children and Young People’s Services (CYPS) (an alternative name for Children and Adolescent Mental Health Services): *“I do hide it if you go to school or with CYPS”*.

Others described the potential risks of being their authentic selves, particularly at school, linking back to feeling unsafe and insecure e.g., *“[I] mask more at school so people don't pick on me”* and *“I don't tell people [I'm autistic] at school because they will bully me”*.

Friendship: The initial formation and ongoing maintenance of friendships were areas that autistic children found difficult, further exacerbating their isolation. When asked what was harder for them because they are autistic, they frequently identified that *“making friends”* and *“fitting in”* was a struggle. Marked isolation was evident when a child quickly identified *“I don't have any friends”*. This lack of friendship appeared to perpetuate the pressure to identify with the neurotypical majority, which in turn, appeared to increase feelings of isolation and masking behaviours.

When friendships were discussed positively, these were largely spoken about in relation to autistic and neurodivergent friends. A lack of neurodivergent communities was particularly evident within school settings, with children commenting that their *“Autistic and neurodivergent friends are outside of school”* and that they *“[do] not really [have] any friends at school (one autistic friend not at school).”*

Theme 3: Identity

The identification of “*being different*” or “*unique*” was dominant throughout responses. When asked about the things that are good about being autistic, some embraced their autistic identity, affirming that they “*like being different*”. Insightful understandings were provided in responses like “*you see the world differently so you are unique*”. Another child commented that “*I am not like other kids*”, highlighting the differentiation between themselves and others. The theme of identity addresses these insights into two subthemes: exploration of autistic identity, and the neurodivergent community.

Exploration of Autistic Identity: Upon exploring their autistic identity, it appeared that the children’s understanding could be broadly characterised into three levels. Firstly, some children said that they lacked foundational knowledge of autism e.g., “*I don’t know what autism is*” and “[I] *don’t know what it means to be autistic*”. Other children appeared to attempt to differentiate their autism from themselves or other co-occurring conditions, although they acknowledged that this was difficult e.g., “*I’m not sure what’s just me and what’s being Autistic*”, and “*I sometimes can’t tell what is ADHD and what is autism*”. Finally, a third group of children explained that their autistic identities and their personal identities were one in the same e.g., “*it makes me me*” and “*i think my experience is all autistic experience as that is who i am. i view and experience the world as an autistic person*”. This perspective appeared to lessen the tendency to mask in some children e.g., “*you can’t turn off autism - why bother hiding it?*”.

Neurodivergent Community: A sense of togetherness, belonging, understanding and shared experience were emphasised in discussions of identifying with, trusting in, and finding safe people and support from the neurodivergent community, thereby gaining safety and security. Some children reported that they talk to autistic family members about autism,

deepening their collective understanding e.g., *“I talk to my cousin sometimes. She is also autistic. We looked together at the book, 'All cats are on the autism spectrum' and compared which bits we matched [on].”*, whilst another child found this connection at an extracurricular activity outside of school: *“I go to an art class where everyone is autistic, we talk to each other about being autistic. I don't talk like that in school because I'm the only autistic person in my class”*. Important connections were also forged in safe spaces that encompass multiple aspects of the children's identities e.g., *“I also talk about it [being autistic] on TrevorSpace because a lot of autistic people are LGBTQIA+”*.

Theme 4: Sensory Sensitivity

Sensory sensitivity was an experience that many reported. A contrast was conveyed between interpretations of sensory sensitivity as either a struggle or a strength.

As a strength. Some approached sensory sensitivity from an optimistic viewpoint. These children considered their heightened awareness as valuable, acknowledging it positively. When asked about the good things about being autistic, children stated that *“it is fun having good hearing”* and *“not having any sound filters can be helpful”*. Other sensory sensitivities of *“good hearing, sense of sight and smell... better taste”* were also identified.

As a struggle. On the other hand, some considered the sensitivity as an additional struggle or hinderance. A sense of overwhelm and *“sensory overload”* were often used to reinforce the difficult nature of these experiences. One child stated that *“loud noises scare me”* and another said that *“smells are strong, noise can be difficult if they 'break my ears'.”* When discussing things that are harder for the children because of being autistic, some listed that *“loud environments”* and *“loud noises”* were particularly distressing.

Quantitative Analysis

A related-samples Friedman's two-way analysis of variance by ranks was conducted to compare the children's responses to the question regarding whether they feel "it is okay to be autistic" around people at home, around their friends/peers, or around their teachers. An overall significant difference was found across the three contexts ($\chi^2(2) = 81.79, p < .001$), with Dunn-Bonferroni post hoc tests indicating that the children reported believing that it is significantly less okay for them to be autistic when they are around their friends/peers ($p < .001$) and when they are around their teachers ($p < .001$), relative to when they are around people at home (Bonferroni adjustments applied) (Figure 4A).

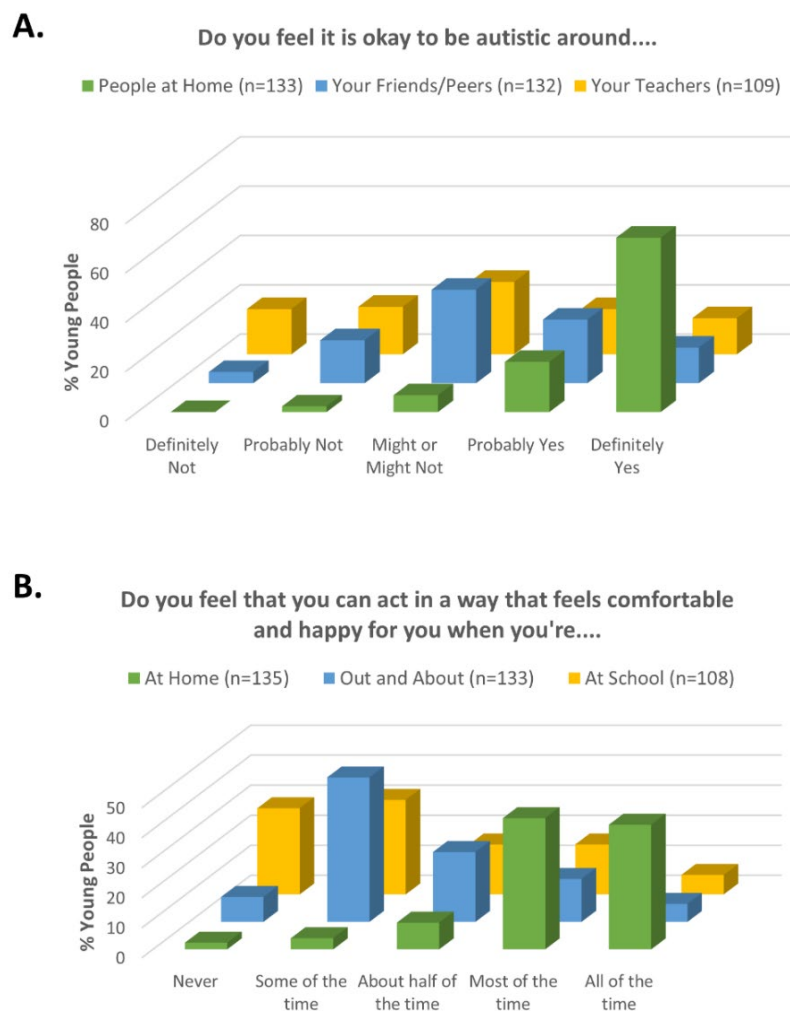


Figure 4. Impact of context on children's perceptions of (A) whether it is okay for them to be autistic, and (B) whether they feel they can act in a way that feels comfortable and happy for them.

When this analysis was repeated for the question of whether the children feel that they can act in a way that feels comfortable and happy for them when they're at home, out and about, or at school, the same patterns was found, i.e., an overall significant difference across the three contexts ($\chi^2(2) = 85.95, p < .001$), with Dunn-Bonferroni post hoc tests revealing that the children reported feeling significantly less able to act in a way that feels comfortable and happy for them when they're out and about ($p < .001$) and at school ($p < .001$), relative to when they are at home (Bonferroni adjustments applied) (Figure 4B).

Discussion

This study aimed to investigate the day-to-day experiences of autistic children, and to explore their insights, understanding of, and feelings towards being autistic. A thematic analysis revealed four themes that emerged from the data: safety and security (containing the subthemes of the importance of listening and understanding, trust, and safe and unsafe places), conformity, fitting in and masking (subtheme of friendship), identity (subthemes of exploration of autistic identity, and neurodivergent community), and sensory sensitivity (divided into subthemes of as a strength and as a struggle). Links were discovered between the themes, subthemes, and assets, including links from conformity, fitting in and masking to identity and safety and security. Feelings of safety at home and with parents were strongly emphasised by participants throughout their responses. This was supported by quantitative data that showed that the children reported feeling that is okay to be autistic with people at home, but significantly less okay when they are with their teachers and their friends/peers.

There is limited research into autistic children's perspectives towards home being a place of comfort and safety, and to our knowledge, the present study is the first to explore if autistic children feel safe at home. In a study investigating autistic adolescents' experiences in

mainstream school, home as a place of safety was referred to by the adolescents, but not expanded on (Fielding et al., 2024). To understand this finding, we wondered whether home may offer respite from public and anticipated stigma (Han et al., 2022). In addition, the predictability and familiarity of the home environment, fewer social interactions, and more control and freedom (Heyworth et al., 2021) may all also contribute. In a study by Schaaf et al. (2011), caregivers to autistic children reported that routines were easier in familiar spaces like their homes, where sensory stimuli are more predictable. Caregivers also reported that in unfamiliar places, they did not have the resources they needed to help their child with any difficulties that may come with sensory sensitivity. The lack of variation in sensory input, and the predictability of the environment, may be what is underlying this sense of safety in the home; i.e., there may be safety found in predictability, regardless of whether this is perceived as positive or negative (Rose, n.d.)

Furthermore, the double empathy problem recognises communication between autistic individuals is highly effective and does not suffer the same communication breakdowns seen when autistic and non-autistic people communicate (Crompton et al., 2020; Milton, 2012). Therefore, the high heritability rates of autism within families may further explain why home is felt to be more comfortable and safer than other environments for autistic young people.

In contrast to safety and comfort at home, external environments (and people) were commonly linked to a lack of safety and security. Numerous children mentioned that healthcare professionals do not listen to them. This is important considering autistic people are more likely to face health disparities and increased health problems (Shaw et al., 2023), yet somewhat unsurprising given previous research that has shown that healthcare professionals receive minimal to no autism-specific training, and self-report only moderate knowledge of autism and moderate confidence in working with autistic people (Corden et al.,

2022). A ‘triple empathy problem’ has been proposed (Shaw et al., 2023), suggesting that the cultural divide between medical professionals and non-medical professionals, and the double empathy problem (Milton, 2012), interact.

Concerns that the children shared with respect to a lack of teachers’ understanding of autism is supported by evidence revealing that student teachers on a four-year Initial Teacher Education course at a UK university, and their tutors, had little or no knowledge or understanding of basic autism teaching strategies (Ravet, 2018). Indeed, this research publication was entitled "But how do I teach them?". This is not necessarily surprising given the current dearth of theory and research into the best-pedagogical practices for pupils with SEND in mainstream settings (Rix et al., 2009), and the concerning lack of research into understanding of how to best support autistic pupils learning in the mainstream classroom (Bullen et al., 2022). Notably, although some participants said that teachers did not listen to or understand them, some shared that they do feel comfortable to talk to their teachers. These were commonly teachers who had further understanding of autism, for example SENCO or teachers in alternative provision units. Research by Leonard and Smyth (2022) found that primary school teachers in Ireland who believed they had suitable resources for the inclusion of autistic children had significantly more positive attitudes than those who did not believe that they had suitable resources. There is a current lack of literature regarding student perspectives of teachers’ inclusion, especially regarding teachers training. Therefore, an important area for future research will be to explore the impacts of training and resources on autistic children’s feelings of inclusion and comfort.

Further, the sensory struggles at school described by the children likely contribute to their perceptions of school being unsafe. Research by Jones et al. (2020) explored parent and teacher perspectives of how sensory differences affect experiences at school for autistic pupils and concluded that sensory experiences were both commonly experienced by autistic

pupils and significantly impacted their learning and school life. Teachers who reported positive sensory experiences noted that the child engaged in learning once their sensory needs had been met.

The children also reported experiencing stigma around their autism and were concerned about the consequences of disclosing their autism, particularly at school. Some participants chose not to tell people at school about their autism, potentially assessing the situation and the person before trusting them as someone safe to share their autism with. This mirrors the findings of Cohen et al. (2022), who reported that autistic young people choose who to disclose their autism with, in order to protect themselves, and aligns with findings from the adult autism literature (Botha et al., 2022b).

Our participants also shared concerns about loneliness and being bullied and judged for being different. This replicates previous reports that autistic children are more lonely than non-autistic children and have poorer quality of friendships (Bauminger & Kasari, 2000). A recent study found that primary school children (aged 6-9 years old) were significantly less likely to want to be friends with and to play with autistic children compared to a neurotypical children, based solely on the autistic children's looks, speech and speech content (Stagg et al., 2023), extending previous findings showing that both neurotypical adults (Grossman, 2015) and neurotypical adolescents (Stagg et al., 2014) rate autistic individuals more negatively when forming first impressions and are less likely to pursue social interactions with them (Sasson et al., 2017).

The importance of listening and understanding was paramount to the children's level of comfort to talk about their autistic experiences with others. Parents and other autistic/neurodivergent people were seen as those who understand, whereas the children did not feel able to talk to those who don't understand, like teachers or professionals.

Alongside our participants who held negative opinions about being autistic or expressed that they understood little about autism, others held positive views towards their autism, identifying being unique and different as good things about being autistic, similarly to findings of Cooper et al. (2021) in which participants felt pride in being different. Higher pride in being autistic has been seen to predict higher self-esteem (Corden et al., 2021), emphasising the importance of empowering autistic pride for improved wellbeing.

It is striking from the results how experiences shift across contexts. Children in the present study commonly spoke of home being a safe place; somewhere where they don't mask, and where they prefer to talk about being autistic. Similarly, they were significantly more likely to report feeling that it is okay to be autistic with people at home relative to either when they are with their teachers or friends/peer and told us that they are significantly more able to act in ways that are comfortable for them when they are at home relative to when they are out and about or at school. Masking tends to be an anxiety driven response to others' behaviour and attitudes (Chapman et al., 2022; Pearson & Rose, 2021), and previous research shows that children are keenly aware of their teachers and school peers perception of autism as inherently negative (Humphrey & Lewis, 2008; Williams et al., 2019). On the other hand, camouflaging appears to decrease when individuals strongly identify with autism and have openly disclosed their autism to others (Cage & Troxell-Whitman, 2020), which for these children, was often the case at home but not so in school or with their neurotypical peers. Challenging the stigma surrounding autism, and the associated marginalisation of autistic people (Pearson & Rose, 2021), is likely essential in helping autistic children to feel safe in spaces where their safety should be assured (e.g., at school). Moreover, as increased masking is associated with poorer mental health outcomes (Hull et al., 2021), it is vital to make external environments safer, to allow for disclosure of autistic identity. As some children shared that they feel safer when they are in an unsafe place when with a safe trusted adult,

this could offer important interim support for autistic children as they navigate their way through spaces in which they do not feel safe.

This importance of understanding and trust are further demonstrated by participants' accounts of shared experiences with other autistic and/or neurodivergent people. Botha et al. (2022a) interviewed 20 autistic adults to explore autistic community connectedness, and identified belongingness, social connectedness, and political connectedness as key elements, with the benefits being reported by participants as increased self-esteem, sense of direction, and a sense of community not experienced elsewhere. A lack of connectedness was linked to feeling internalised stigma, and a weaker connection to their autistic identity, which is seen in some of our participants who explained that they don't know what is good about autism. The connection through shared experiences supports the findings of Crompton et al. (2020) where participants reported being able to be authentically themselves when with autistic family and friends. This is reflected in our participants sharing that they feel better understood by autistic peers than by non-autistic peers, highlighting the potential importance of providing opportunities for autistic pupils to be together (Macmillan et al., 2018). With many of our participants sharing that their autistic and neurodivergent friends were outside of school, that they feel isolated at school, and being the only autistic person in their class, schools need to recognise the impact of this marginalisation and play a role in creating a community for their autistic students. Recently, a group of autistic young adults (n=13) expressed enthusiasm for the idea of autistic peer support groups within schools to address the disconnect they felt at school (provided this was flexible, inclusive, positive, and embraced neurodiversity), although such peer support projects have yet to be piloted (Crompton et al., 2023). Finally, the work of Goodall (2020) with autistic young people reminds us that inclusion is a feeling of belonging, not a physical place.

Limitations

A potential limitation of this research is the format of long questionnaires, that may have led to boredom and shortened answers, as well as a selection bias for participants able to participate in research of this nature. Adjustments to reduce demand/cognitive burden included encouraging participants to complete the questionnaire via video call with a researcher. Recognising that this may create additional barriers to participation for some, participants could also opt to complete the questionnaire online in their own time.

The lack of ethnic diversity within this study is critical to address. It is imperative to acknowledge the nuanced intersectionality of race, ethnicity, sexuality, gender, SES and age as factors that create distinct barriers to self-discovery, community-building, and advocacy within the context of autism. The dominant narrative surrounding autism has historically been white and Western-centric (Silberman, 2017), thereby alienating non-white individuals from safe spaces for communal discussion and connection surrounding their multiply marginalized identities.

The underlying issue of privilege is paramount in understanding this narrative. Individuals with more privileged identities may have the luxury of exploring and even acting upon concepts such as neurodivergent authenticity or 'unmasking', without fear of repercussions. However, members of minority groups may not have the same level of safety and protection when advocating for their needs or expressing boundaries due to systemic biases and discrimination. It is likely relevant here that our cohort had an over-representation of families living in the least deprived areas of the country. Our child participants also all had parents who were actively seeking a better understanding of autism for them via the act of them engaging in this research in the first instance.

In discussions regarding the agency, autonomy, and advocacy of young people within the autistic and wider neurodivergent communities, it is crucial to account for issues of safety and privilege. Understanding the intersectional experiences of autistic people is essential in creating inclusive and supportive environments for all.

Conclusion

To the best of our knowledge, this is the largest study exploring autistic children's voices in the literature. Four core themes were identified: 'Safety and Security', 'Conformity, Fitting in and Masking', 'Identity', and 'Sensory Sensitivity'. Participants discussed home, school, family, and friends, and what makes a place or person safe. Safety and security permeated the children's discussions when reflecting on being autistic and they appeared to be actively aware of who in their lives they can trust and who they cannot. This pattern was evident both in the qualitative and quantitative analyses of their responses. Moreover, when they were with unsafe people or in unsafe places (frequently reported as school), the children were acutely aware of the need to hide their autism for their own safety. The children had varying relationships with the autistic identity and often this was positive, with value placed on spending time with other neurodivergent people. These first-hand accounts of autistic children's experiences provide valuable insights into being an autistic child in today's world.

References

- Bauminger, N., & Kasari, C. (2000). Loneliness and Friendship in High-Functioning Children with Autism. *Child development*, 71(2), 447-456. <https://doi.org/10.1111/1467-8624.00156>
- Bonnello, C. (2022). *Results and Analysis of the Autistic Not Weird 2022 Autism Survey*. Autistic Not Weird. <https://autisticnotweird.com/autismsurvey/>
- Botha, M. (2021). Academic, Activist, or Advocate? Angry, Entangled, and Emerging: A Critical Reflection on Autism Knowledge Production. *Frontiers in Psychology*, 12, 727542-727542. <https://doi.org/10.3389/fpsyg.2021.727542>
- Botha, M., & Cage, E. (2022). "Autism research is in crisis": A mixed method study of researcher's constructions of autistic people and autism research [Original Research]. *Frontiers in Psychology*, 13. <https://doi.org/10.3389/fpsyg.2022.1050897>
- Botha, M., Dibb, B., & Frost, D. M. (2022a). 'It's being a part of a grand tradition, a grand counter-culture which involves communities': A qualitative investigation of autistic community connectedness. *Autism : the international journal of research and practice*, 26(8), 2151-2164. <https://doi.org/10.1177/13623613221080248>
- Botha, M., Dibb, B., & Frost, D. M. (2022b). "Autism is me": an investigation of how autistic individuals make sense of autism and stigma. *Disability & Society*, 37(3), 427-453. <https://doi.org/10.1080/09687599.2020.1822782>
- Braun, V., & Clarke, V. (2006). Using thematic analysis in psychology. *Qualitative Research in Psychology*, 3(2), 77-101. <https://doi.org/10.1191/1478088706qp063oa>
- Bullen, J. C., Zajic, M. C., McIntyre, N., Solari, E., & Mundy, P. (2022). Patterns of math and reading achievement in children and adolescents with autism spectrum disorder. *Research in Autism Spectrum Disorders*, 92, 101933. <https://doi.org/10.1016/j.rasd.2022.101933>

- Cage, E., Di Monaco, J., & Newell, V. (2019). Understanding, attitudes and dehumanisation towards autistic people. *Autism : the international journal of research and practice*, 23(6), 1373-1383. <https://doi.org/10.1177/1362361318811290>
- Cage, E., & Troxell-Whitman, Z. (2020). Understanding the Relationships Between Autistic Identity, Disclosure, and Camouflaging. *Autism in Adulthood*, 2(4), 334-338. <https://doi.org/10.1089/aut.2020.0016>
- Chance, P. (1974). A conversation with Ivar Lovaas about self-mutilating children and how their parents make it worse. *Psychology Today*, 76-84.
- Chapman, L., Rose, K., Hull, L., & Mandy, W. (2022). "I want to fit in... but I don't want to change myself fundamentally": A qualitative exploration of the relationship between masking and mental health for autistic teenagers. *Research in Autism Spectrum Disorders*, 99, 102069. <https://doi.org/10.1016/j.rasd.2022.102069>
- Chown, N., Robinson, J., Beardon, L., Downing, J., Hughes, L., Leatherland, J., Fox, K., Hickman, L., & MacGregor, D. (2017). Improving research about us, with us: a draft framework for inclusive autism research. *Disability & Society*, 32(5), 720-734. <https://doi.org/10.1080/09687599.2017.1320273>
- Cohen, S. R., Joseph, K., Levinson, S., Blacher, J., & Eisenhower, A. (2022). "My Autism Is My Own": Autistic Identity and Intersectionality in the School Context. *Autism in Adulthood*, 4(4), 315-327. <https://doi.org/10.1089/aut.2021.0087>
- Connolly, S. E., Constable, H. L., & Mullally, S. L. (2023). School distress and the school attendance crisis: a story dominated by neurodivergence and unmet need [Original Research]. *Frontiers in Psychiatry*, 14. <https://doi.org/10.3389/fpsy.2023.1237052>
- Cooper, K., Russell, A. J., Lei, J., & Smith, L. G. E. (2023). The impact of a positive autism identity and autistic community solidarity on social anxiety and mental health in

autistic young people. *Autism : the international journal of research and practice*, 27(3), 848-857. <https://doi.org/10.1177/13623613221118351>

Cooper, R., Cooper, K., Russell, A. J., & Smith, L. G. E. (2021). “I’m Proud to be a Little Bit Different”: The Effects of Autistic Individuals’ Perceptions of Autism and Autism Social Identity on Their Collective Self-esteem. *Journal of Autism and Developmental Disorders*, 51(2), 704-714. <https://doi.org/10.1007/s10803-020-04575-4>

Corden, K., Brewer, R., & Cage, E. (2021). Personal Identity After an Autism Diagnosis: Relationships With Self-Esteem, Mental Wellbeing, and Diagnostic Timing. *Front Psychol*, 12, 699335. <https://doi.org/10.3389/fpsyg.2021.699335>

Corden, K., Brewer, R., & Cage, E. (2022). A Systematic Review of Healthcare Professionals’ Knowledge, Self-Efficacy and Attitudes Towards Working with Autistic People. *Review Journal of Autism and Developmental Disorders*, 9(3), 386-399. <https://doi.org/10.1007/s40489-021-00263-w>

Crompton, C. J., Hallett, S., Axbey, H., McAuliffe, C., & Cebula, K. (2023). ‘Someone like-minded in a big place’: Autistic young adults’ attitudes towards autistic peer support in mainstream education. *Autism*, 27(1), 76-91. <https://doi.org/10.1177/13623613221081189>

Crompton, C. J., Hallett, S., Ropar, D., Flynn, E., & Fletcher-Watson, S. (2020). ‘I never realised everybody felt as happy as I do when I am around autistic people’: A thematic analysis of autistic adults’ relationships with autistic and neurotypical friends and family. *Autism*, 24(6), 1438-1448. <https://doi.org/10.1177/1362361320908976>

DePape, A.-M., & Lindsay, S. (2016). Lived Experiences From the Perspective of Individuals With Autism Spectrum Disorder: A Qualitative Meta-Synthesis. *Focus on Autism and Other Developmental Disabilities*, 31(1), 60-71. <https://doi.org/10.1177/1088357615587504>

- Fielding, C., Streeter, A., Riby, D. M., & Hanley, M. (2024). Neurodivergent Pupils' Experiences of School Distress and Attendance Difficulties.
- Frith, U., & Happé, F. (1999). Theory of mind and self-consciousness: What is it like to be autistic? *Mind & Language*, *14*(1), 1-22. <https://doi.org/10.1111/1468-0017.00100>
- Gillespie-Lynch, K., Kapp, S. K., Brooks, P. J., Pickens, J., & Schwartzman, B. (2017). Whose expertise is it? Evidence for autistic adults as critical autism experts. *Frontiers in Psychology*, *8*, 438-438. <https://doi.org/10.3389/fpsyg.2017.00438>
- Goodall, C. (2018). 'I felt closed in and like I couldn't breathe': A qualitative study exploring the mainstream educational experiences of autistic young people. *Autism & Developmental Language Impairments*, *3*, 239694151880440. <https://doi.org/10.1177/2396941518804407>
- Goodall, C. (2020). Inclusion is a feeling, not a place: a qualitative study exploring autistic young people's conceptualisations of inclusion. *International journal of inclusive education*, *24*(12), 1285-1310. <https://doi.org/10.1080/13603116.2018.1523475>
- Gough, J. (2024). Theory of Mind and Its Role in Theories of Autism. In G. Bennett & E. Goodall (Eds.), *The Palgrave Encyclopedia of Disability* (pp. 1-7). Springer Nature Switzerland. https://doi.org/10.1007/978-3-031-40858-8_15-1
- GOV. (2019). *English indices of deprivation*. Ministry of Housing, Communities & Local Government. <https://www.gov.uk/government/statistics/english-indices-of-deprivation-2019>
- Grossman, R. B. (2015). Judgments of social awkwardness from brief exposure to children with and without high-functioning autism. *Autism : the international journal of research and practice*, *19*(5), 580-587. <https://doi.org/10.1177/1362361314536937>

- Han, E., Scior, K., Avramides, K., & Crane, L. (2022). A systematic review on autistic people's experiences of stigma and coping strategies. *Autism Research, 15*(1), 12-26. <https://doi.org/10.1002/aur.2652>
- Hens, K., Robeyns, I., & Schaubroeck, K. (2019). The ethics of autism. *Philosophy Compass, 14*(1), n/a. <https://doi.org/10.1111/phc3.12559>
- Heyworth, M., Brett, S., Houting, J. d., Magiati, I., Steward, R., Urbanowicz, A., Stears, M., & Pellicano, E. (2021). "It just fits my needs better": Autistic students and parents' experiences of learning from home during the early phase of the COVID-19 pandemic. *Autism & Developmental Language Impairments, 6*, 239694152110576-23969415211057681. <https://doi.org/10.1177/23969415211057681>
- Hillier, A., Gallop, N., Mendes, E., Tellez, D., Buckingham, A., Nizami, A., & Otoole, D. (2020). LGBTQ + and autism spectrum disorder: Experiences and challenges. *International journal of transgender health, 21*(1), 98-110. <https://doi.org/10.1080/15532739.2019.1594484>
- Holt, A., Bounekhla, K., Welch, C., & Polatajko, H. (2022). "Unheard minds, again and again": autistic insider perspectives and theory of mind. *Disability and Rehabilitation, 44*(20), 5887-5897. <https://doi.org/10.1080/09638288.2021.1949052>
- Hull, L., Levy, L., Lai, M. C., Petrides, K. V., Baron-Cohen, S., Allison, C., Smith, P., & Mandy, W. (2021). Is social camouflaging associated with anxiety and depression in autistic adults? *Molecular Autism, 12*(1), 13-13. <https://doi.org/10.1186/s13229-021-00421-1>
- Humphrey, N., Lewis, S. (2008). 'Make me normal': the views and experiences of pupils on the autistic spectrum in mainstream secondary schools. *Autism, 12*(1), 23-46. <https://doi.org/10.1177/136236130708526>

- Jiang, M., Lu, T., Yang, K., Li, X., Zhao, L., Zhang, D., Li, J., & Wang, L. (2023). Autism spectrum disorder research: knowledge mapping of progress and focus between 2011 and 2022 [Original Research]. *Frontiers in Psychiatry, 14*.
<https://doi.org/10.3389/fpsy.2023.1096769>
- Jones, E. K., Hanley, M., & Riby, D. M. (2020). Distraction, distress and diversity: Exploring the impact of sensory processing differences on learning and school life for pupils with autism spectrum disorders. *Research in Autism Spectrum Disorders, 72*, 101515.
<https://doi.org/10.1016/j.rasd.2020.101515>
- Kenny, L., Hattersley, C., Molins, B., Buckley, C., Povey, C., & Pellicano, E. (2016). Which terms should be used to describe autism? Perspectives from the UK autism community. *Autism : the international journal of research and practice, 20*(4), 442-462. <https://doi.org/10.1177/1362361315588200>
- Kirby, A. V., Dickie, V. A., & Baranek, G. T. (2015). Sensory experiences of children with autism spectrum disorder: In their own words. *Autism : the international journal of research and practice, 19*(3), 316-326. <https://doi.org/10.1177/1362361314520756>
- Leonard, N. M., & Smyth, S. (2022). Does training matter? Exploring teachers' attitudes towards the inclusion of children with autism spectrum disorder in mainstream education in Ireland. *International journal of inclusive education, 26*(7), 737-751.
<https://doi.org/10.1080/13603116.2020.1718221>
- Macmillan, K., Goodall, K., & Fletcher-Watson, S. (2018). *Do autistic individuals experience understanding in school?* <https://doi.org/10.31219/osf.io/awzuk>
- Milton, D., & Bracher, M. (2013). Autistics speak but are they heard? (BSA Medical Sociology Online). 7, 61-69.
- Milton, D. E. M. (2012). On the ontological status of autism: the 'double empathy problem'. *Disability & Society, 27*(6), 883-887. <https://doi.org/10.1080/09687599.2012.710008>

- Milton, D. E. M. (2014). Autistic expertise: A critical reflection on the production of knowledge in autism studies: *Autism and Society. Autism : the international journal of research and practice*, 18(7), 794-802.
- Noble, S., McLennan, D., Noble, M., Plunkett, E., Gutacker, N., Silk, M., & Wright, G. (2019). The English indices of deprivation 2019. *Ministry of Housing, Communities and Local Government*.
- Pearson, A., & Rose, K. (2021). A Conceptual Analysis of Autistic Masking: Understanding the Narrative of Stigma and the Illusion of Choice. *Autism Adulthood*, 3(1), 52-60.
<https://doi.org/10.1089/aut.2020.0043>
- Pellicano, E., Dinsmore, A., & Charman, T. (2014). Views on researcher-community engagement in autism research in the United Kingdom: A mixed-methods study. *PLOS ONE*, 9(10), e109946-e109946. <https://doi.org/10.1371/journal.pone.0109946>
- Phung, J., Penner, M., Pirlot, C., & Welch, C. (2021). What I Wish You Knew: Insights on Burnout, Inertia, Meltdown, and Shutdown From Autistic Youth. *Frontiers in Psychology*, 12, 741421-741421. <https://doi.org/10.3389/fpsyg.2021.741421>
- Ravet, J. (2018). 'But how do I teach them?': Autism & Initial Teacher Education (ITE). *International journal of inclusive education*, 22(7), 714-733.
<https://doi.org/10.1080/13603116.2017.1412505>
- Rix, J., Hall, K., Nind, M., Sheehy, K., & Wearmouth, J. (2009). What pedagogical approaches can effectively include children with special educational needs in mainstream classrooms? A systematic literature review. *Support for learning*, 24(2), 86-94. <https://doi.org/10.1111/j.1467-9604.2009.01404.x>
- Roche, L., Adams, D., & Clark, M. (2021). Research priorities of the autism community: A systematic review of key stakeholder perspectives. *Autism*, 25(2), 336-348.
<https://doi.org/10.1177/1362361320967790>

Rose, K. (2020). *Regarding the use of dehumanising rhetoric*. The Autistic Advocate.

<https://theautisticadvocate.com/regarding-the-use-of-dehumanising-rhetoric/>

Rose, K. (n.d.). *Autistic Masking and Autistic Burnout*. The Autistic Advocate.

<https://theautisticadvocate.com/autistic-masking/>

Sasson, N. J., Faso, D. J., Nugent, J., Lovell, S., Kennedy, D. P., & Grossman, R. B. (2017).

Neurotypical Peers are Less Willing to Interact with Those with Autism based on Thin Slice Judgments. *Scientific reports*, 7(1), 40700-40700.

<https://doi.org/10.1038/srep40700>

Saunders, P. (2018). Neurodivergent Rhetorics: Examining Competing Discourses of Autism

Advocacy in the Public Sphere. *Journal of Literary & Cultural Disability Studies*, 12(1), 1-17. <https://doi.org/10.3828/jlcds.2018.1>

Schaaf, R. C., Toth-Cohen, S., Johnson, S. L., Outten, G., & Benevides, T. W. (2011). The

everyday routines of families of children with autism: Examining the impact of sensory processing difficulties on the family. *Autism : the international journal of research and practice*, 15(3), 373-389. <https://doi.org/10.1177/1362361310386505>

Selfhout, M., Denissen, J., Branje, S., & Meeus, W. (2009). In the Eye of the Beholder:

Perceived, Actual, and Peer-Rated Similarity in Personality, Communication, and Friendship Intensity During the Acquaintanceship Process. *Journal of Personality and Social Psychology*, 96(6), 1152-1165. <https://doi.org/10.1037/a0014468>

Shaw, S., Carravallah, L., Johnson, M., O'Sullivan, J., Chown, N., Neilson, S., & Doherty, M.

(2023). Barriers to healthcare and a 'triple empathy problem' may lead to adverse outcomes for autistic adults: A qualitative study. *Autism : the international journal of research and practice*, 13623613231205629-13623613231205629.

<https://doi.org/10.1177/13623613231205629>

Silberman, S. (2017). Neurotribes: the legacy of autism and the future of neurodiversity.

Psychiatry, 30(2), 120-123.

Stagg, S. D., Slavny, R., Hand, C., Cardoso, A., & Smith, P. (2014). Does facial expressivity

count? How typically developing children respond initially to children with autism.

Autism, 18(6), 704-711. <https://doi.org/10.1177/1362361313492392>

Stagg, S. D., Thompson-Robertson, L., & Morgan, C. (2023). Primary school children rate

children with autism negatively on looks, speech and speech content. *British Journal*

of Developmental Psychology, 41(1), 37-49. <https://doi.org/10.1111/bjdp.12430>

TrevorSpace. (n.d.). *The Trevor Project*. <https://www.thetrevorproject.org/trevorspace/>

Williams, E. I., Gleeson, K., & Jones, B. E. (2019). How pupils on the autism spectrum make

sense of themselves in the context of their experiences in a mainstream school setting:

A qualitative metasynthesis. *Autism*, 23(1), 8-28.

<https://doi.org/10.1177/1362361317723836>