

Supplementary Table 1: Unique patient characteristics in the BQC19, stratified by ancestry.

	European	African	East Asian	Middle Eastern	Admixed American	South Asian	Admix/ Other
Overall <i>n</i> (%)	584 (64%)	147 (16%)	53 (6%)	46 (5%)	33 (4%)	19 (2%)	27 (3%)
Median Age (IQR)	73 (62 – 82)	55 (43 – 66)	58 (51 – 73)	74 (54 – 82)	56 (53 – 68)	54 (38 – 66)	54 (37 – 83)
# of Females (%)	273 (47 %)	75 (51 %)	33 (61 %)	22 (48%)	13 (39%)	7 (37%)	15 (56%)
Severe COVID (%)	175 (30%)	61 (41%)	19 (35%)	17 (37%)	13 (39%)	5 (26%)	1 (3.7%)
Median Days since Symptom Onset (IQR)	10 (4 – 16)	10 (7 – 16)	9 (6 – 13)	4 (1 – 14)	16 (9 – 18)	11 (5 – 17)	9 (6 – 14)

Numbers are presented as count (percentage) or (IQR). IQR is the interquartile range, which is the spread of the middle half of the distribution of the population.

Supplemental Formula and Code

Formula

$$Z = \frac{\hat{b}_1 - \hat{b}_2}{\sqrt{SE_{\hat{b}_1}^2 + SE_{\hat{b}_2}^2}}$$

Z-test used to determine how different one ancestral model was from another. \hat{b}_1 and \hat{b}_2 are the estimated effect sizes of severe COVID-19 illness on protein level in models 1 and 2 respectively and $SE_{\hat{b}_1}$ and $SE_{\hat{b}_2}$ are for the standard errors of these respective estimates. Z^2 follows a chi-squared distribution with one degree of freedom.

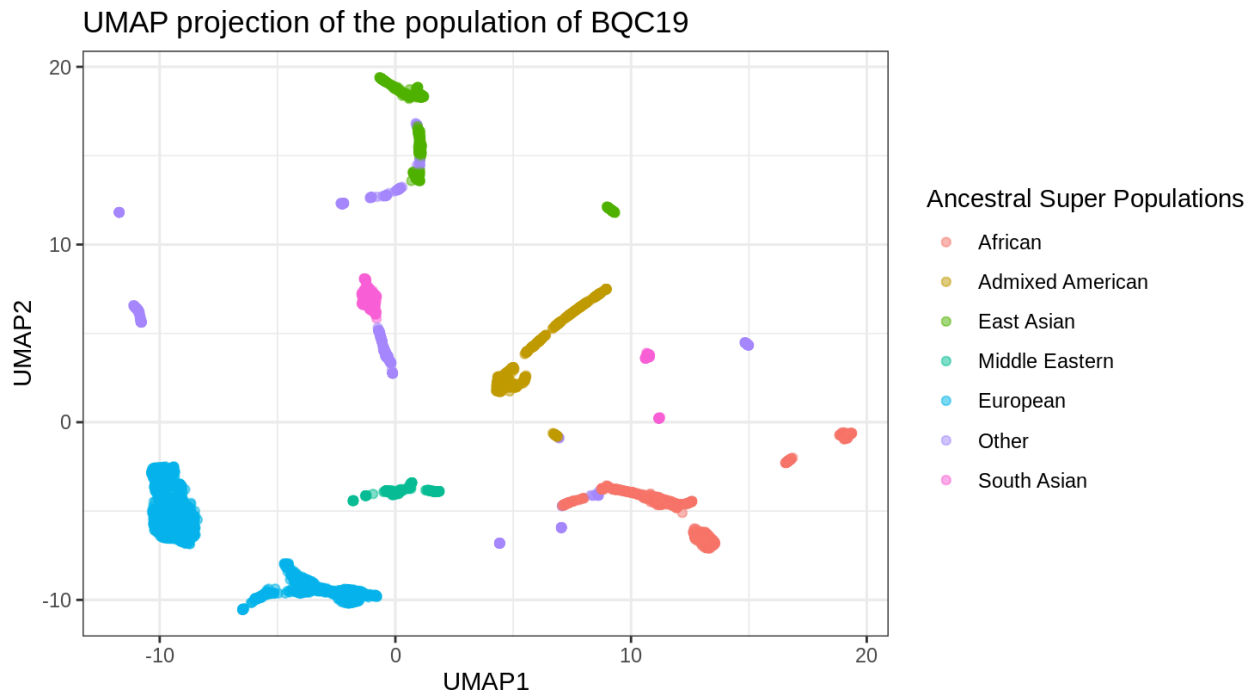
LMM Formula:

Protein Level = $\beta_0 + \beta_1 \text{COVID} + \beta_2 \text{Age} + \beta_3 \text{Sex} + \beta_4 \text{DSO} + (1 | \text{BQCID})$

DSO: Days since symptom onset

BQCID: Unique Patient ID which lets us track which samples come from each patient

Supplementary Figure 1: UMAP projection of the population of the BQC19



UMAP of all BQC19 tested patients sorted into the six super population as defined by HGI and an unclassified ("other") population.